



Sonic Cement  
Bond Log

Ph. (785) 625-3858

15-163-24050-00-00

Company Anderson Energy Inc.  
Well Eaton Trust No. 1  
Field Wildcat  
County Rooks State Kansas

Location SW SE NE SE  
1430' FSL & 510' FEL  
Sec: 18 Twp: 10 S Rge: 20 W

Other Services  
Portable Mast

Permanent Datum Ground Level Elevation 2142  
Log Measured From Kelly Bushing 9 Ft. Above Perm. Datum  
Drilling Measured From Kelly Bushing

Elevation  
K.B. 2151  
D.F.  
G.L. 2142

Run Number	One	
Date Survey	07/09/2012	
Date Cementing	06/29/2012	
Type Cementing Operation	Primary	
Depth Driller	3900	
Depth Logger	3849	
Logged Interval	3848 to 2400	to
Casing Driller	5.5 @ TD	@
Float Collar -- D.V. Tool	1614	////
Squeeze Depth	////	
Amount & Type Cement	////	
Amount & Type Admix	////	
Type Fluid In Hole	Water	
Fluid Level	Full	
Salinity PPM CL	////	
Weight lb/gal -- Vis.	////	////
Approx. Logged Cement Top	2500	
Calculated Cement Top	////	
Max. Hole Temperature	115	
Tool No.	PRDG71	
Spacing Recorded	3-5	
Equipment -- Location	71 Hays	
Recorded By	Scott Clermont	
Witnessed By	Terry Piesker	

<<< Fold Here >>>

All interpretations are opinions based on inferences from electrical or other measurements and we cannot and do not guarantee the accuracy or correctness of any interpretation, and we shall not, except in the case of gross or willful negligence on our part, be liable or responsible for any loss, costs, damages, or expenses incurred or sustained by anyone resulting from any interpretation made by any of our officers, agents or employees. These interpretations are also subject to our general terms and conditions set out in our current Price Schedule.

Comments

Thank you for using LOG-TECH  
(785) 621-2794

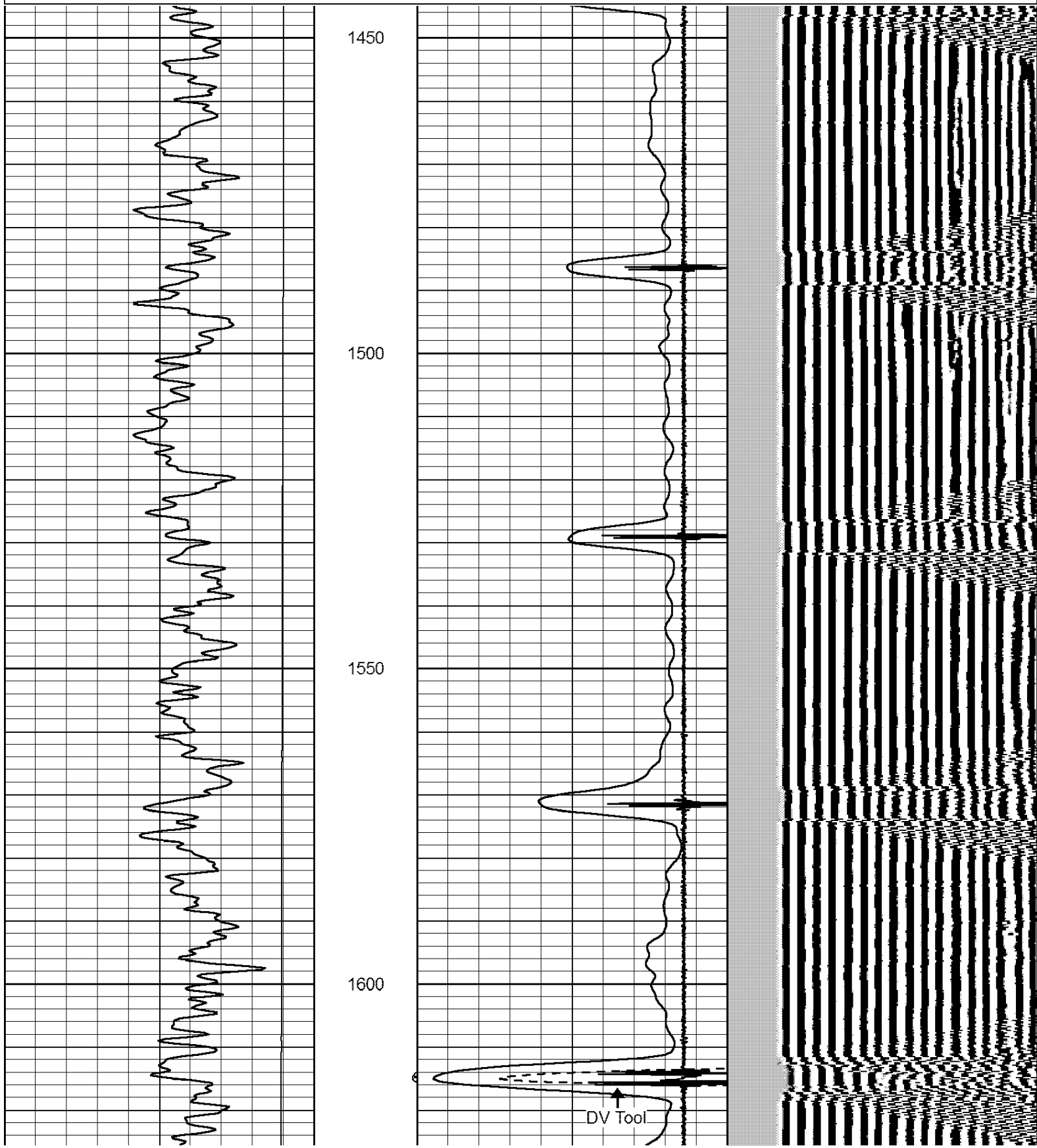
Ellis Ks, North to County Line, 1 West to 2nd Rd.,  
3 1/4 North, West Into

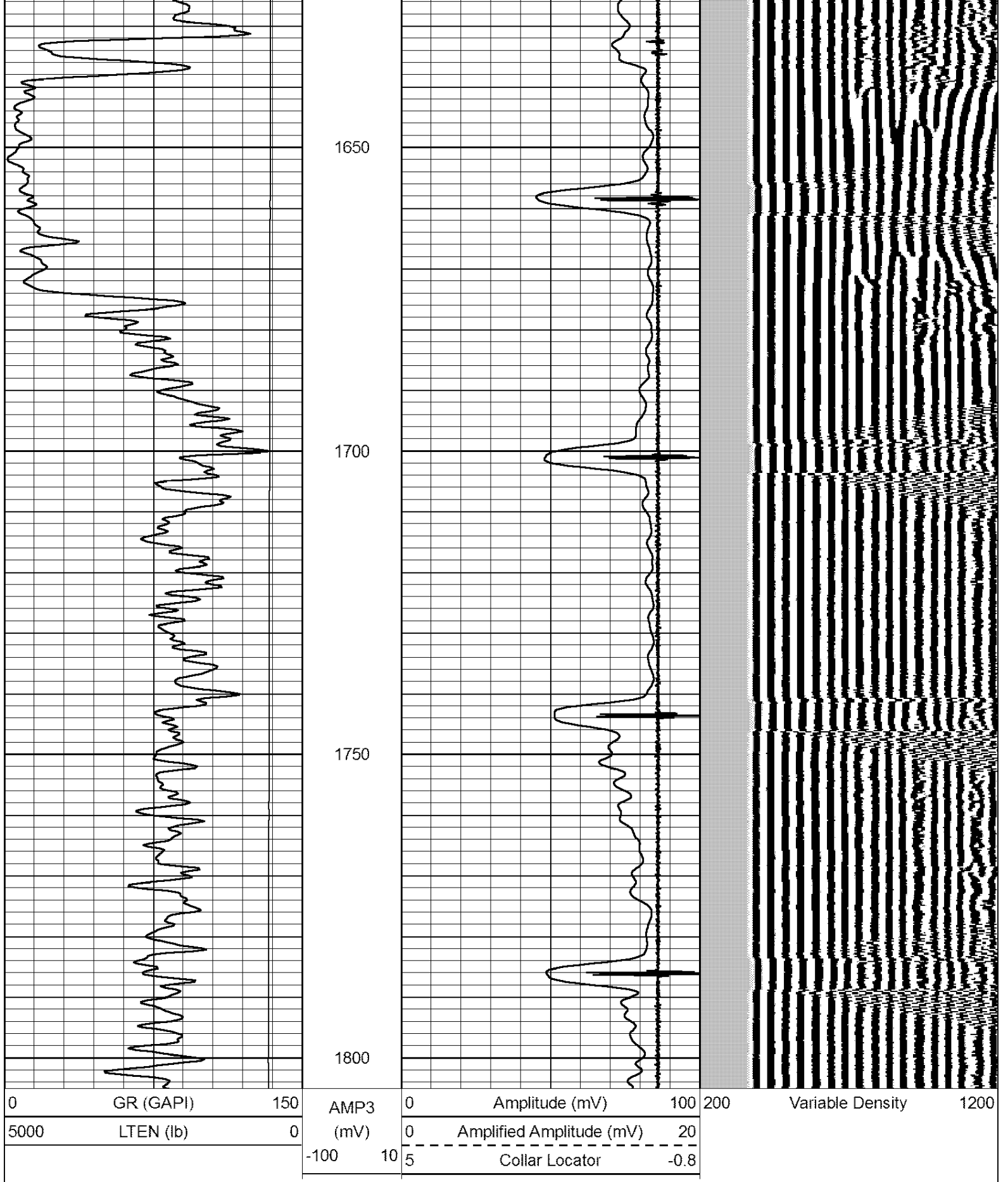


DV TOOL @ 1614

Database File: andersonenergy\_eatontru\_no.db  
 Dataset Pathname: grcbl/pass5  
 Presentation Format: cbl dig  
 Dataset Creation: Mon Jul 09 13:43:42 2012 by Log SCH 111116  
 Charted by: Depth in Feet scaled 1:240

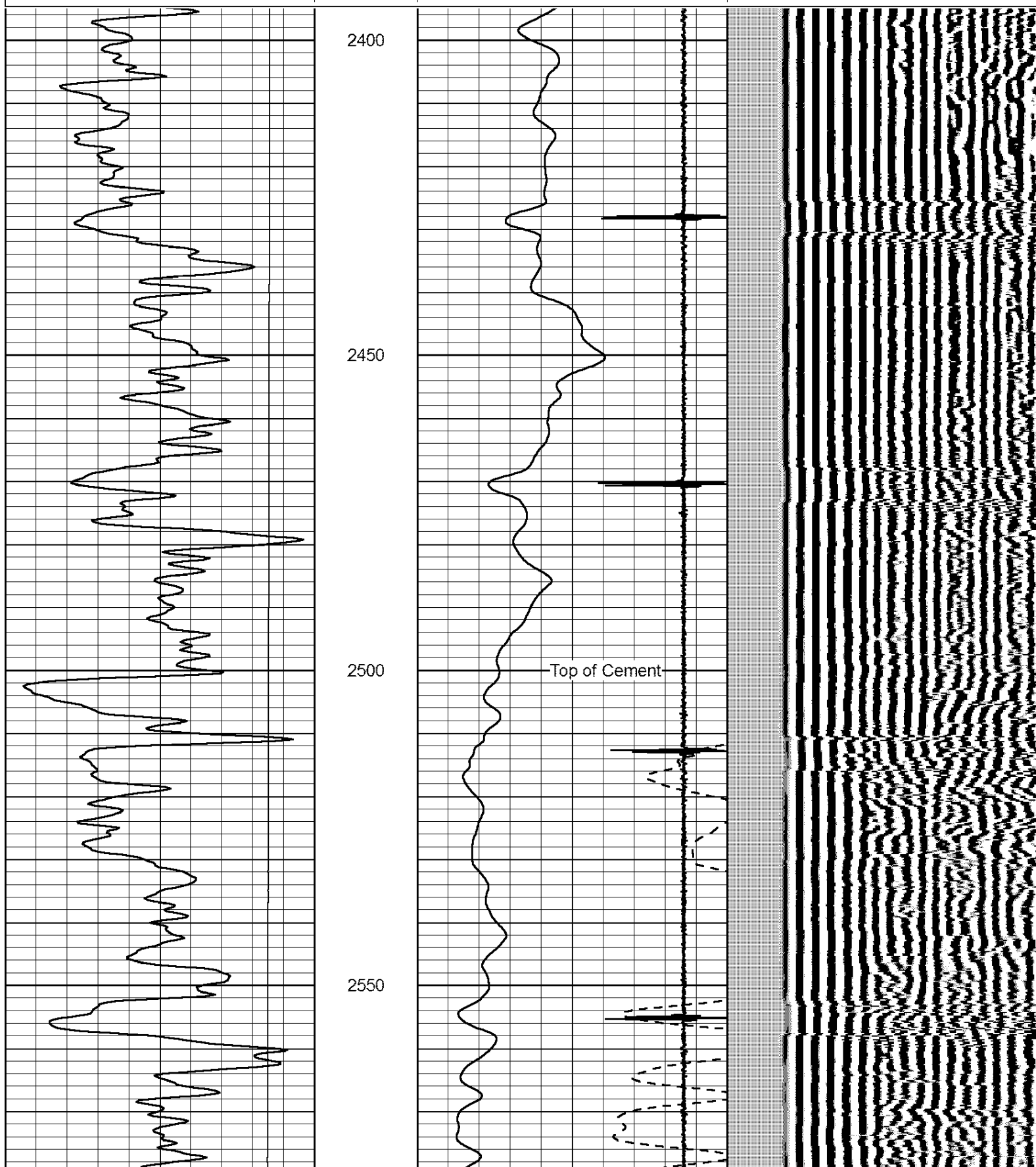
0	GR (GAPI)	150	AMP3	0	Amplitude (mV)	100	200	Variable Density	1200
5000	LTEN (lb)	0	(mV)	0	Amplified Amplitude (mV)	20			
			-100 10	5	Collar Locator	-0.8			

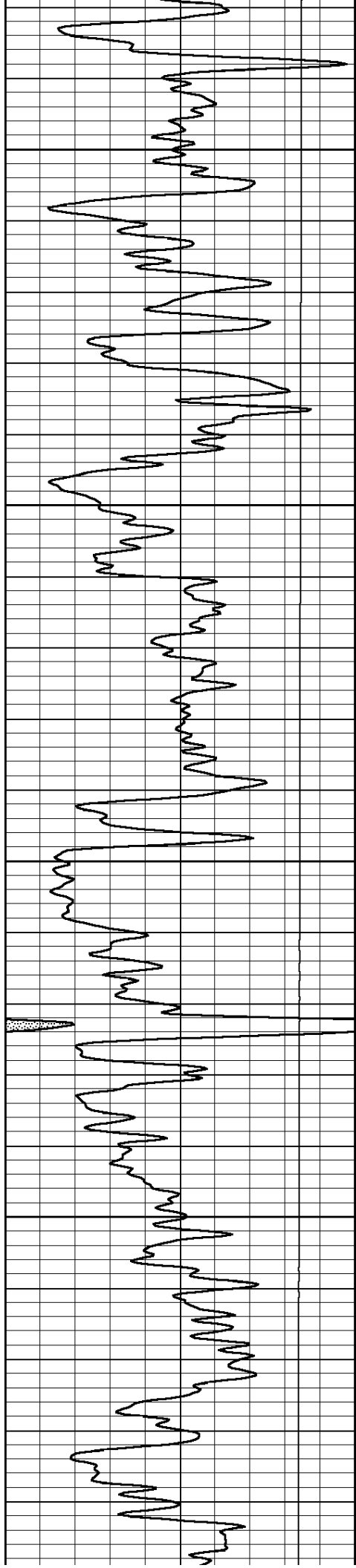




Database File: andersonenergy\_eatontru\_no.db  
 Dataset Pathname: grcbl/pass4.1  
 Presentation Format: cbl dig  
 Dataset Creation: Mon Jul 09 14:03:54 2012 by Calc SCH 111116  
 Charted by: Depth in Feet scaled 1:240

0	GR (GAPI)	150	AMP3	0	Amplitude (mV)	100	200	Variable Density	1200
5000	LTEN (lb)	0	(mV)	0	Amplified Amplitude (mV)	20			
			-100	10	5	Collar Locator	-0.8		



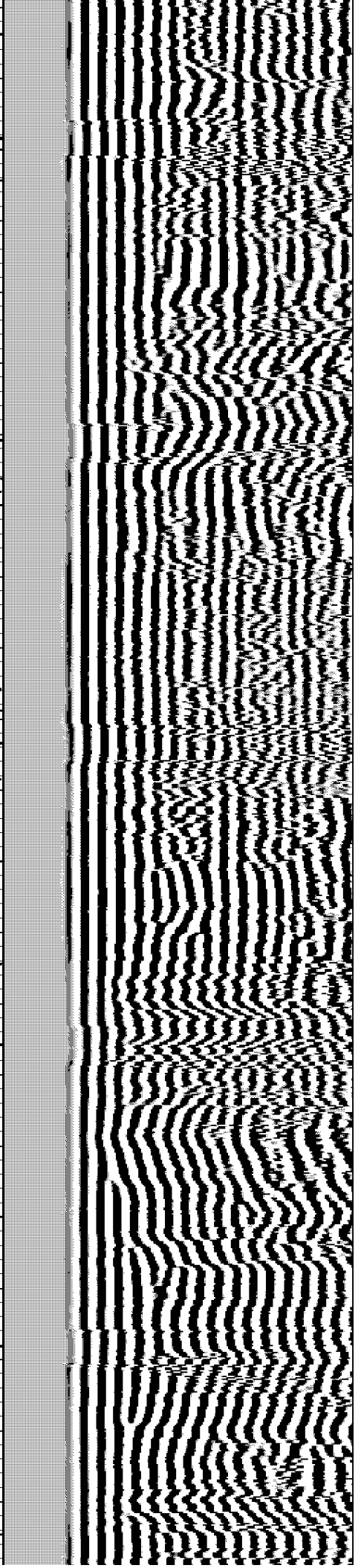
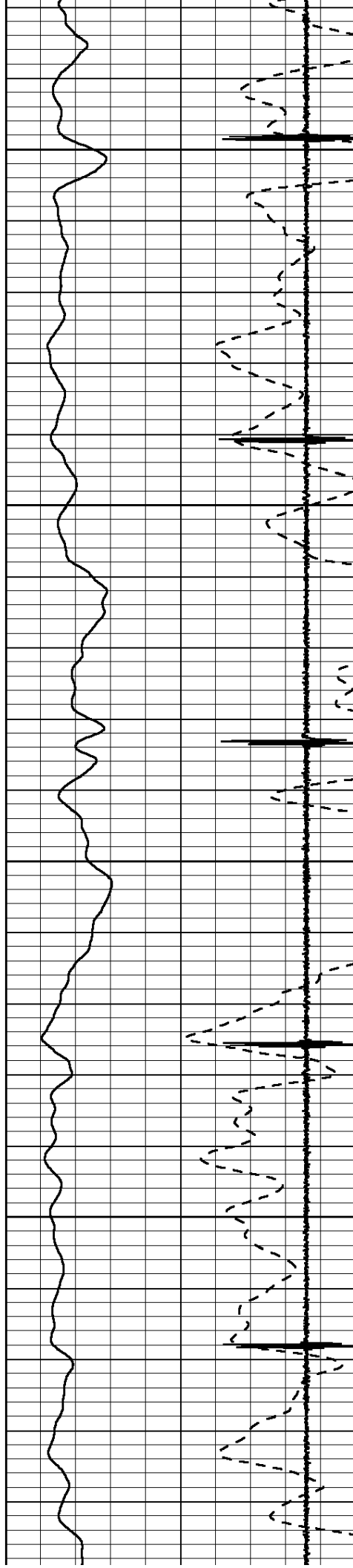


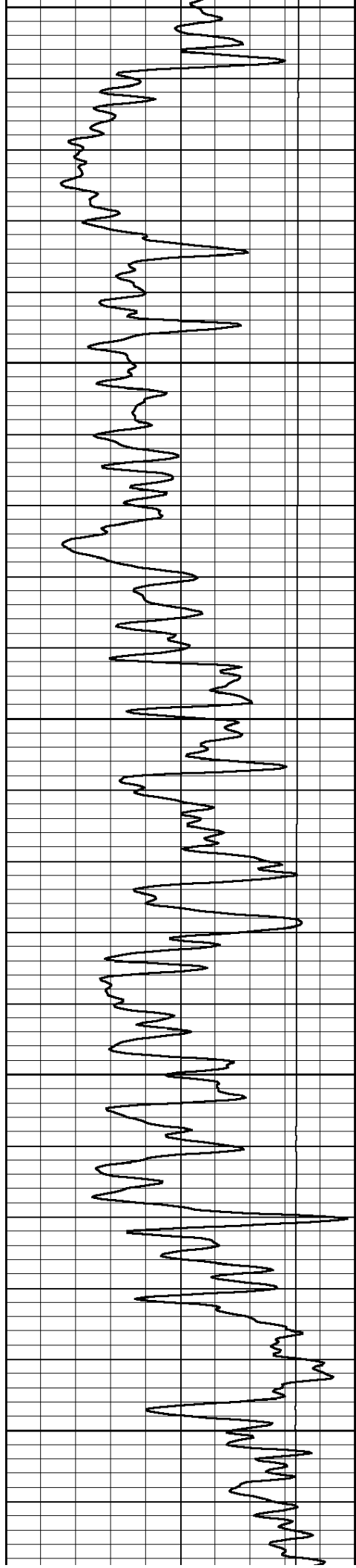
2600

2650

2700

2750





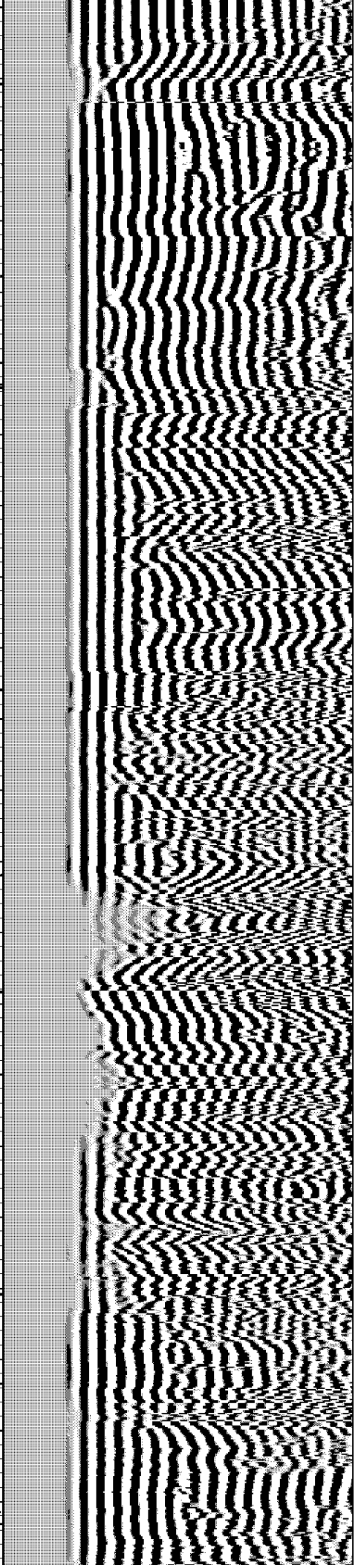
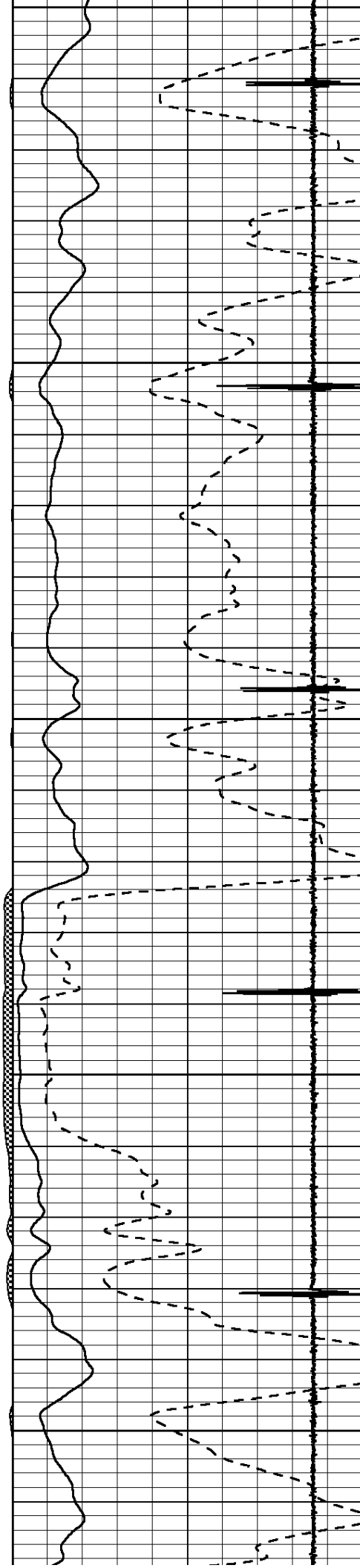
2800

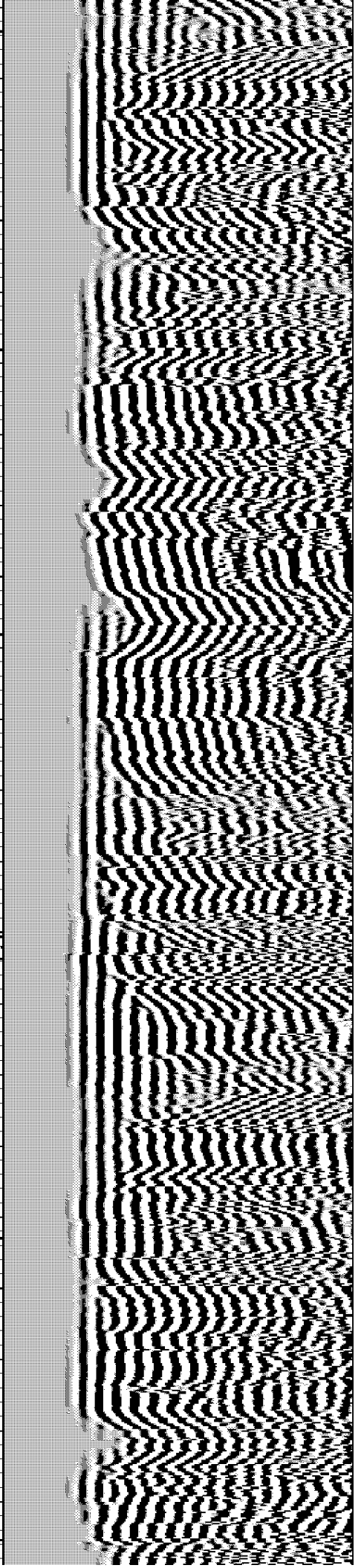
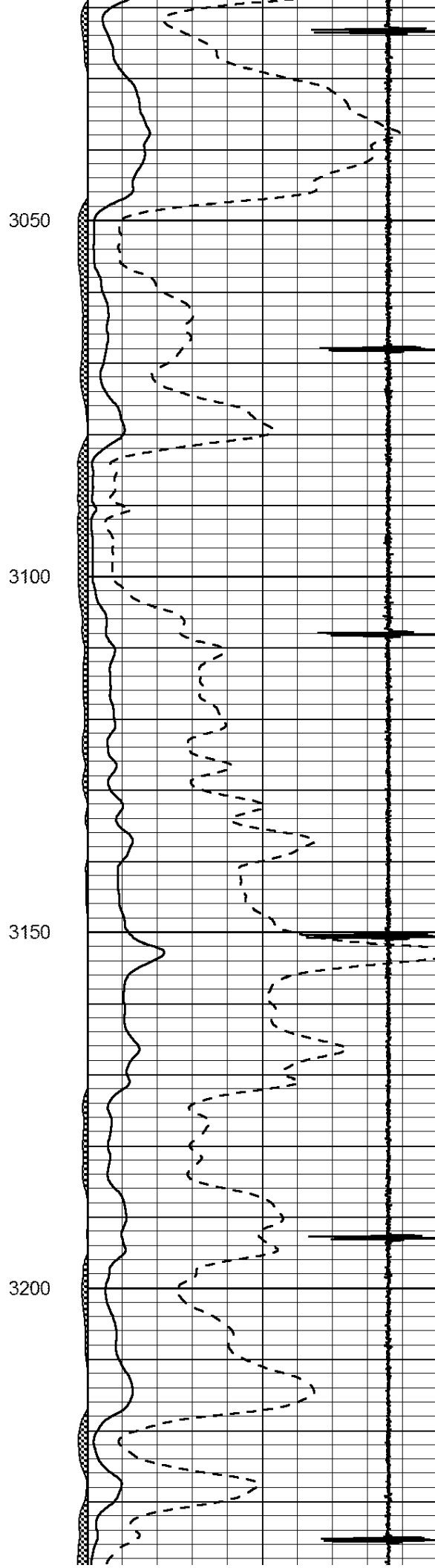
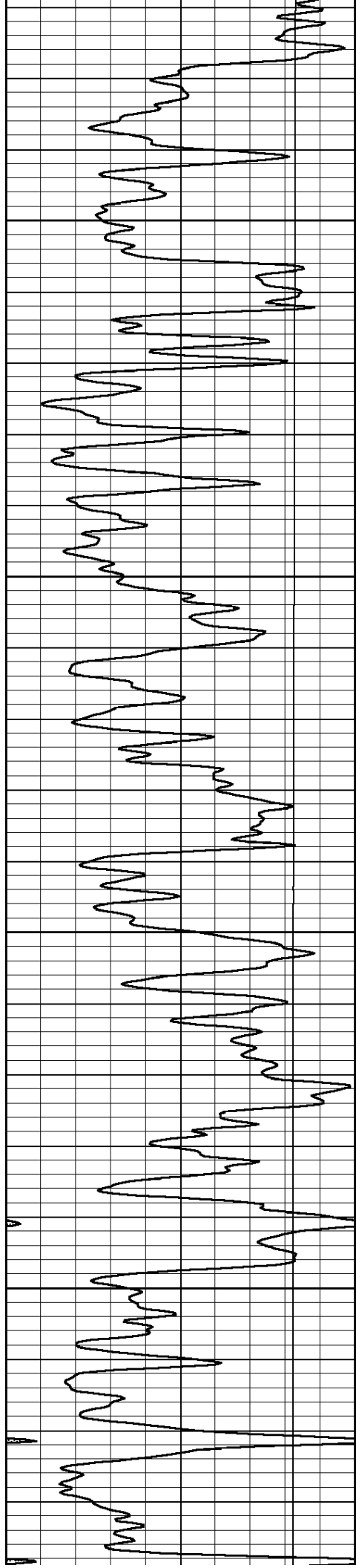
2850

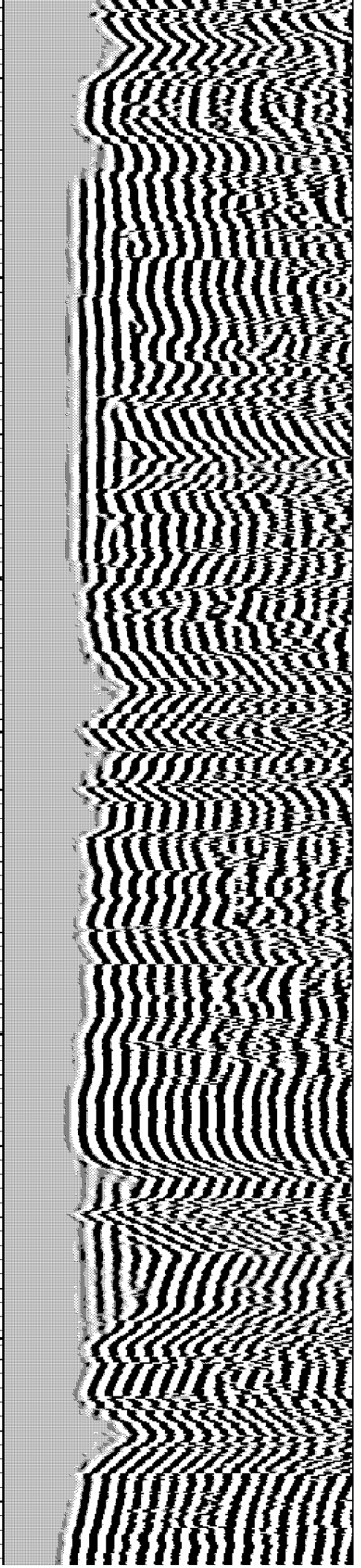
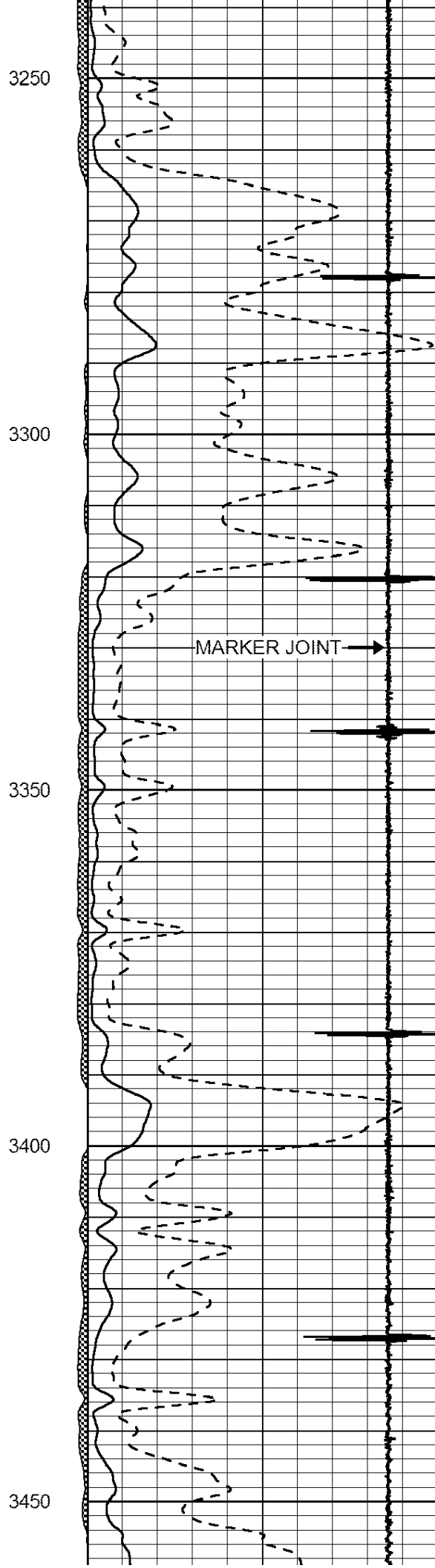
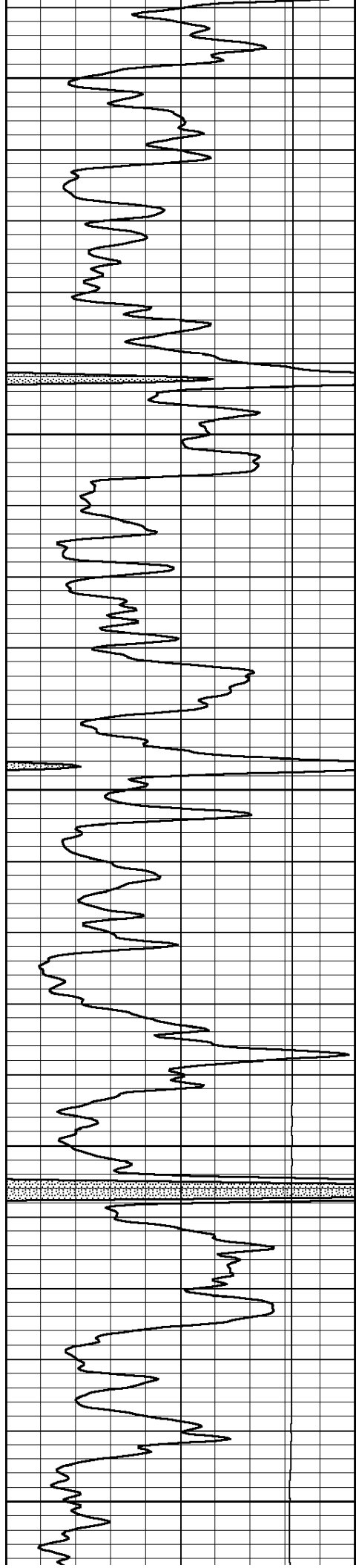
2900

2950

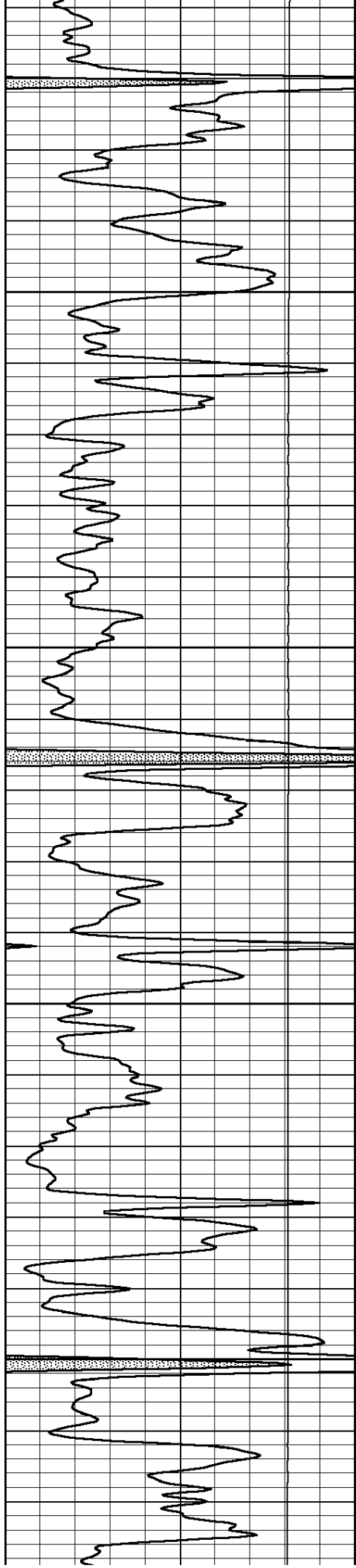
3000









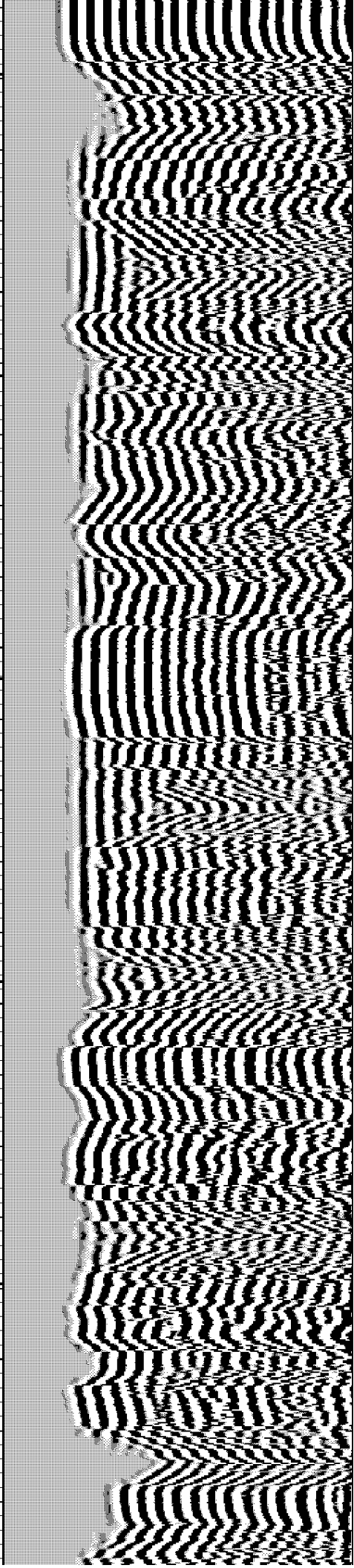
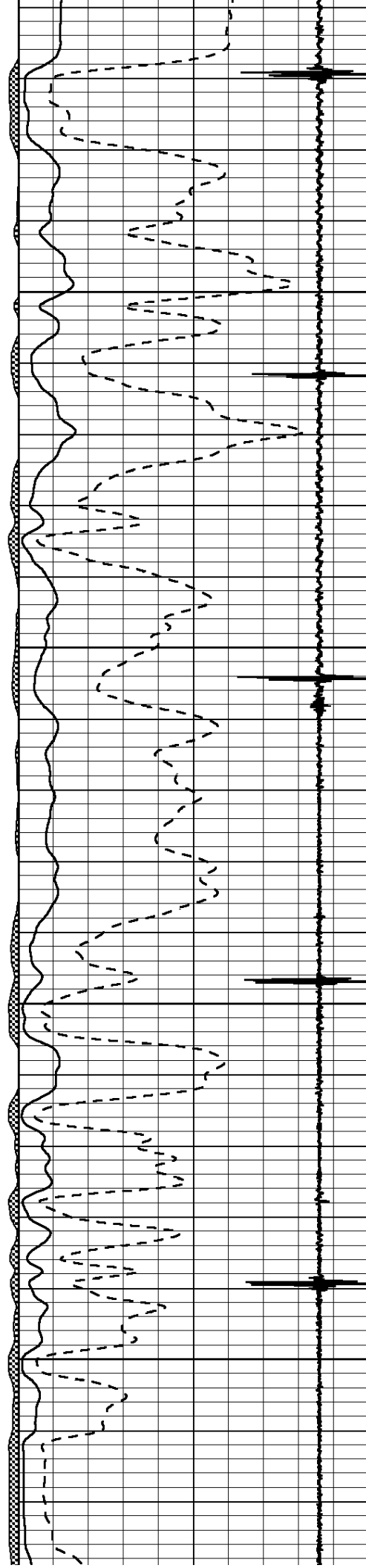


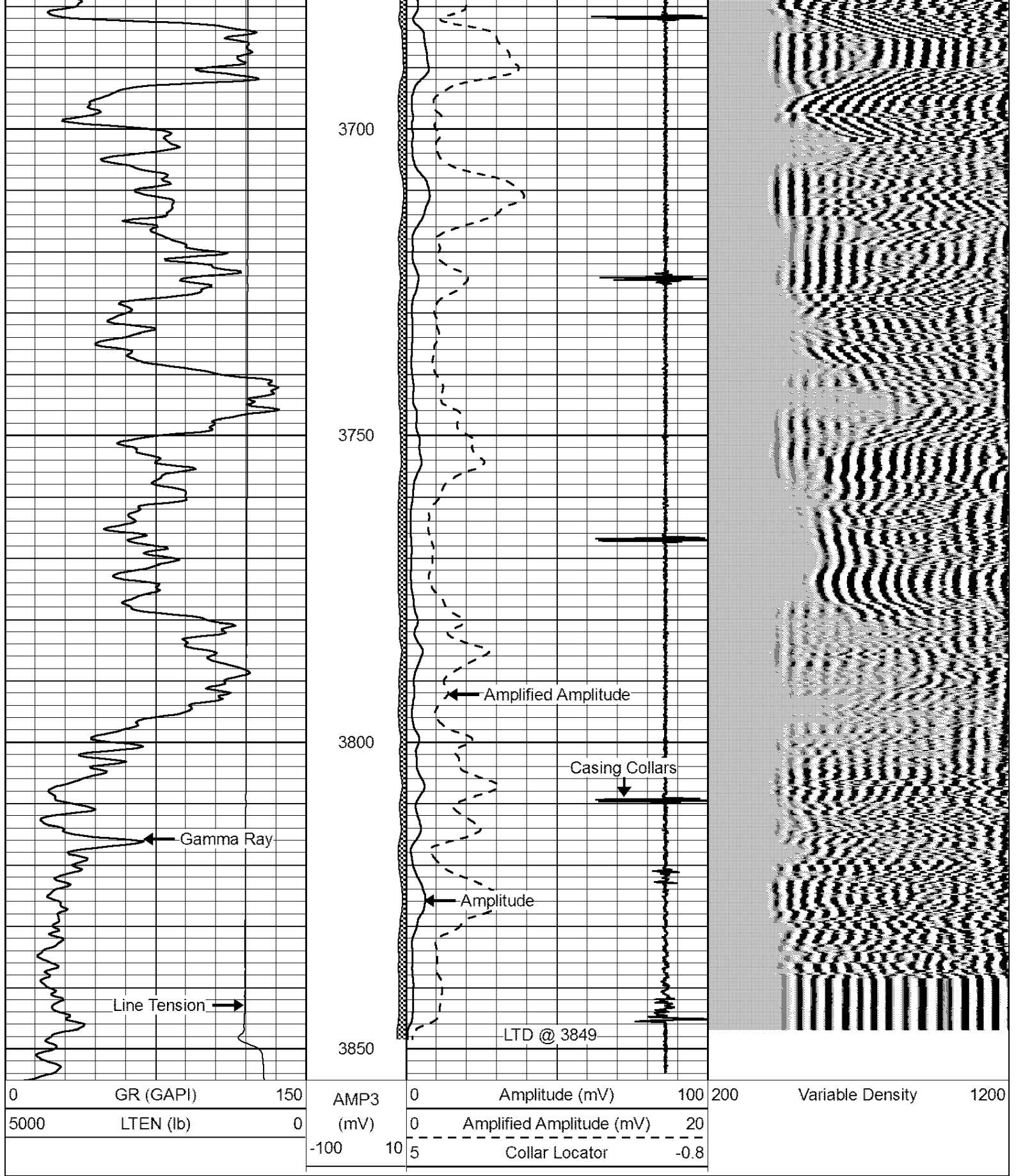
3500

3550

3600

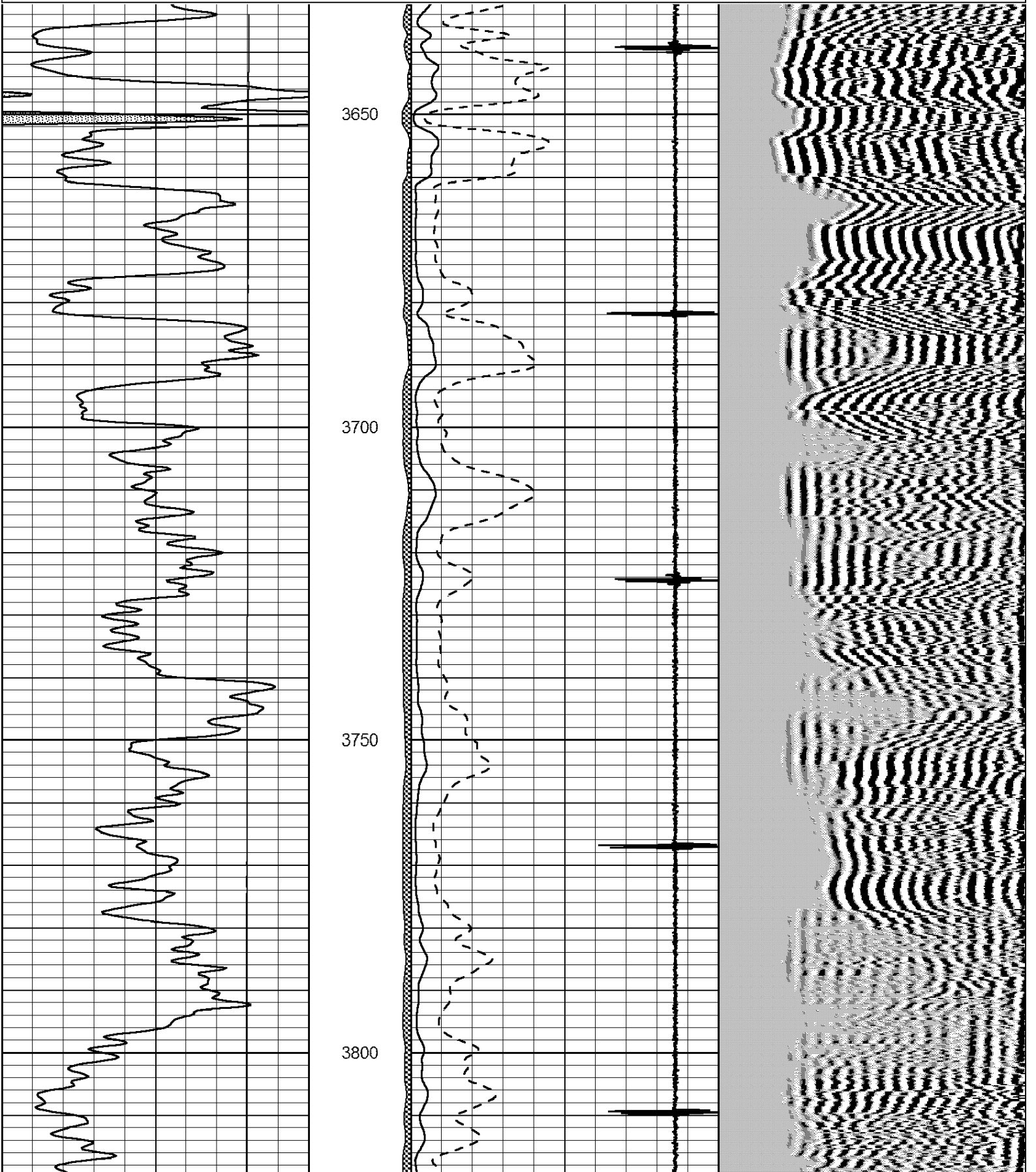
3650

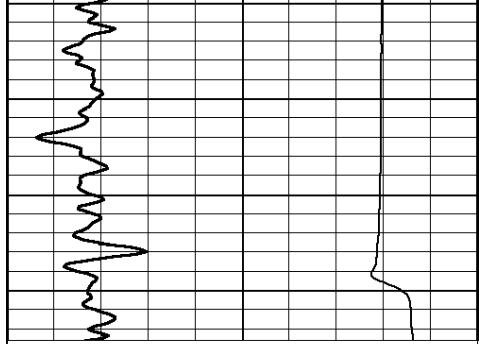




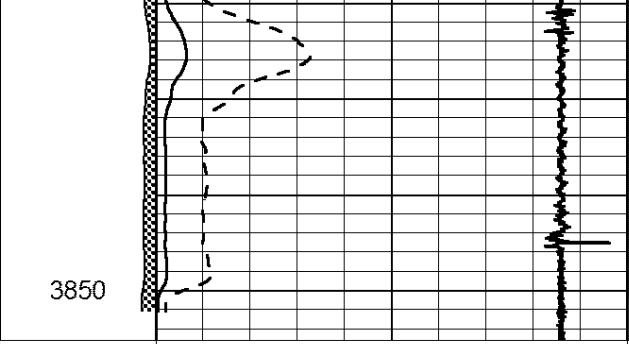
Database File: andersonenergy\_eatontru\_no.db  
 Dataset Pathname: grcbl/pass3  
 Presentation Format: cbl dig  
 Dataset Creation: Mon Jul 09 12:59:05 2012 by Log SCH 111116  
 Charted by: Depth in Feet scaled 1:240

0	GR (GAPI)	150	AMP3	0	Amplitude (mV)	100	200	Variable Density	1200
5000	LTEN (lb)	0	(mV)	0	Amplified Amplitude (mV)	20			
			-100	10	5	Collar Locator	-0.8		

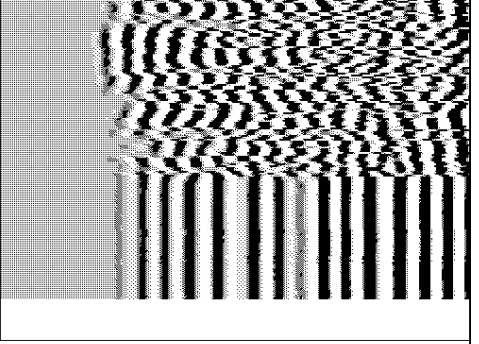




0	GR (GAPI)	150
5000	LTEN (lb)	0



3850	AMP3	0	Amplitude (mV)	100
	(mV)	0	Amplified Amplitude (mV)	20



200	Variable Density	1200
-----	------------------	------

-100	10
------	----

5	Collar Locator	-0.8
---	----------------	------