



Pioneer Energy Services

Sector Bond / Gamma Ray  
CCL Log

API No.

15-009-25729-00-00

Company **F.G. Holl Company, LLC.**  
Well **Penner Trust Unit No. 1-15**  
Field

County **Barton** State **Kansas**

Location

80' N. 3<sup>1</sup>/<sub>2</sub> W of C E/2 E/2 E/2  
2560' FNL & 333' FEL

Other Services

Sec: 15 Twp: 20 S Rge: 15 W

Elevation

Permanent Datum Ground Level Elevation 1976  
Log Measured From Kelly Bushing 8 Ft. Above Perm. Datum  
Drilling Measured From Kelly Bushing

K.B. 1984  
D.F.  
G.L. 1976

Run Number	One	
Date Survey	08/17/2012	
Date Cementing	07/27/2012	
Type Cementing Operation	Primary	
Depth Driller	3850	
Depth Logger	3828	
Logged Interval	3827 to 2900	
Casing Driller	5.5 @ TD	@
Float Collar -- D.V. Tool	////	////
Squeeze Depth	////	
Amount & Type Cement	////	
Amount & Type Admix	////	
Type Fluid In Hole	Water	
Fluid Level	Full	
Salinity PPM CL	////	
Weight lb/gal -- Vis.	////	////
Approx. Logged Cement Top	3088	
Calculated Cement Top	////	
Max. Hole Temperature	113	
Tool No.	RBT 3-6	
Spacing Recorded	3'-5"	
Equipment -- Location	18	D. Hagan
Recorded By		Rob Long
Witnessed By		

<<< Fold Here >>>

All interpretations are opinions based on inferences from electrical or other measurements and we cannot and do not guarantee the accuracy or correctness of any interpretation, and we shall not, except in the case of gross or willful negligence on our part, be liable or responsible for any loss, costs, damages, or expenses incurred or sustained by anyone resulting from any interpretation made by any of our officers, agents or employees. These interpretations are also subject to our general terms and conditions set out in our current Price Schedule.

Comments

Thank you for using Pioneer Energy Services  
785.625.3858

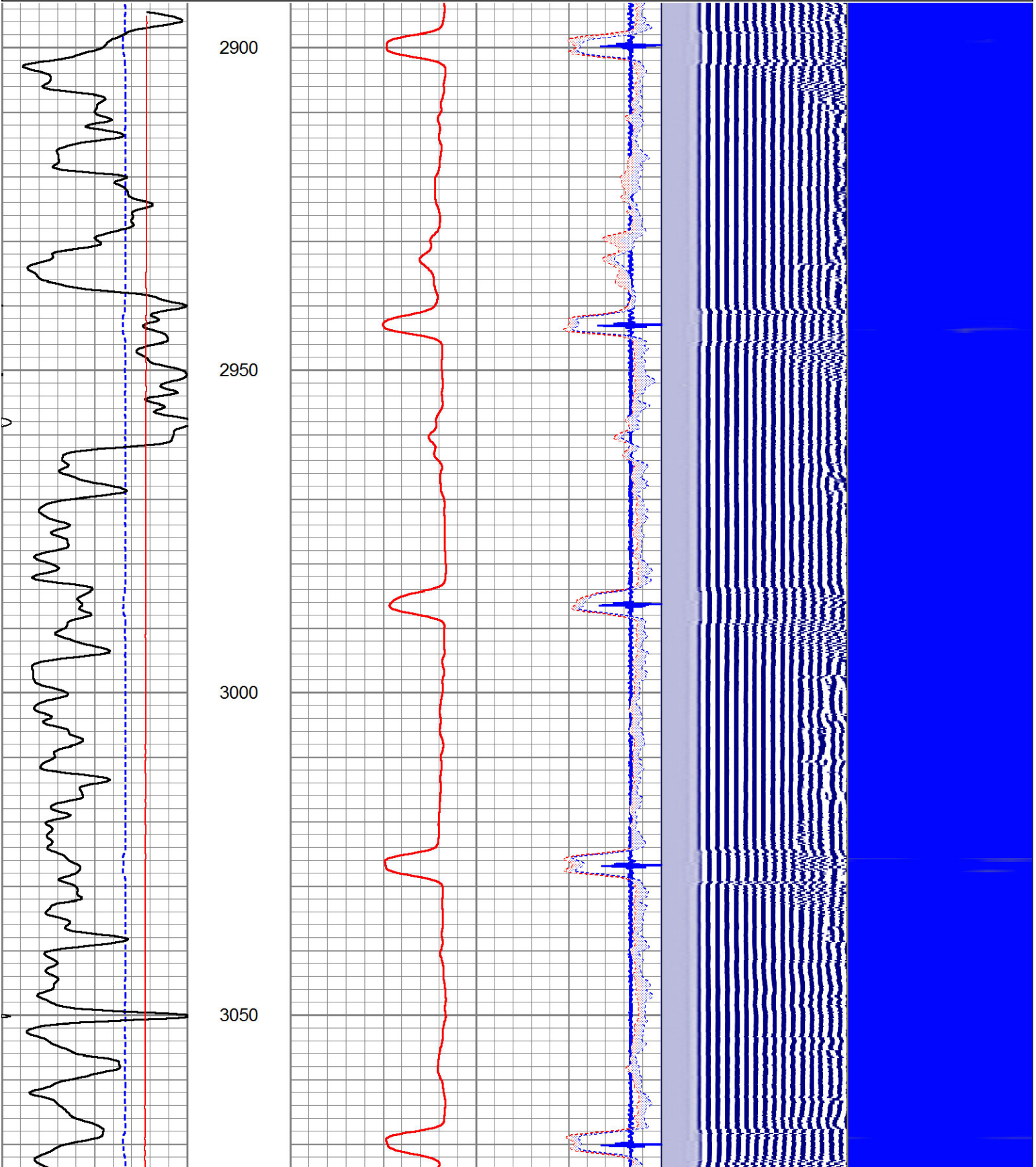
Great Bend, Ks. 4 Southwest on 156 Highway to Turner Blacktop (SW 30 Road)  
5 West to SW 100 Ave. 1/2 South, West into

Database File: fgholl\_1-15.db  
 Dataset Pathname: sgrcbl/pass4  
 Presentation Format: scblclr2  
 Dataset Creation: Fri Aug 17 08:46:03 2012 by Log SCH 120126  
 Charted by: Depth in Feet scaled 1:240

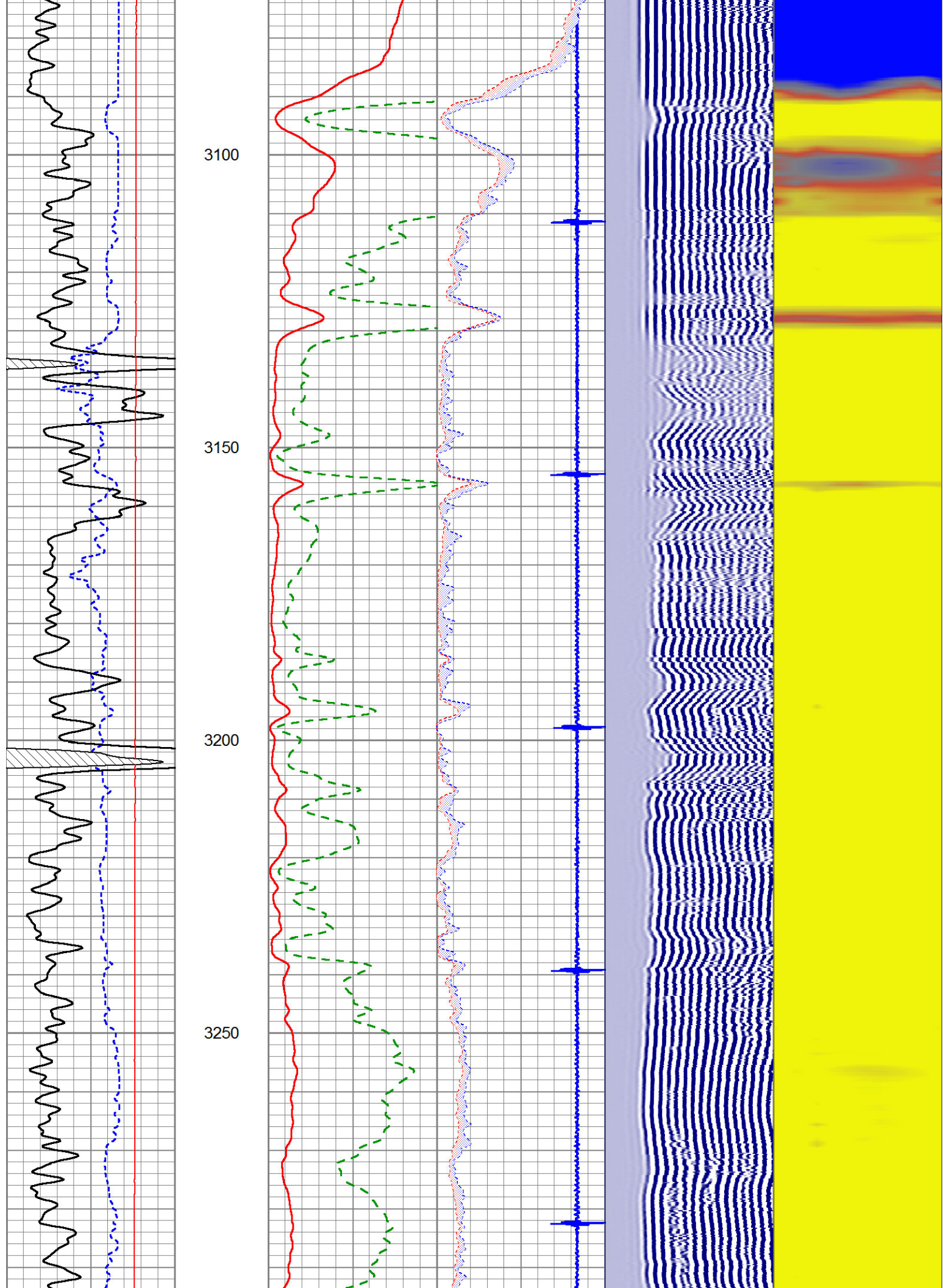
750	TT (usec)	70
0	GR	150
4000	LTEN (lb)	0

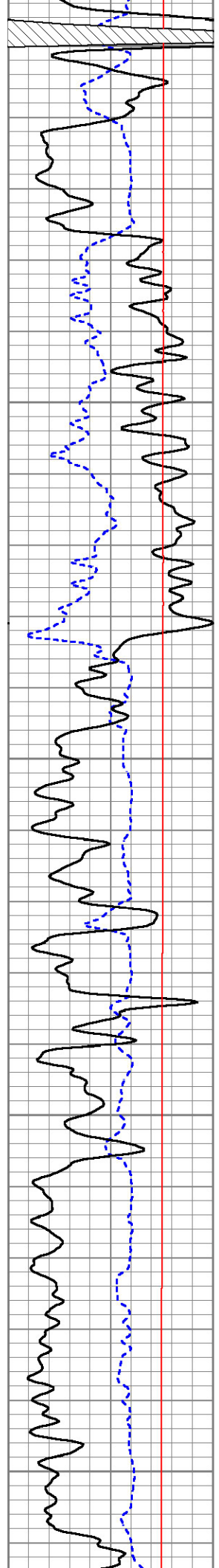
0	AMP (mV)	100	0	AMPAVG	150
0	AMPx5 (mV)	20	0	AMPMAX	150
0			0	AMPMIN	150
5	CCL	-1			

200	VDL	1200	1	Cement Map	8
			25		75









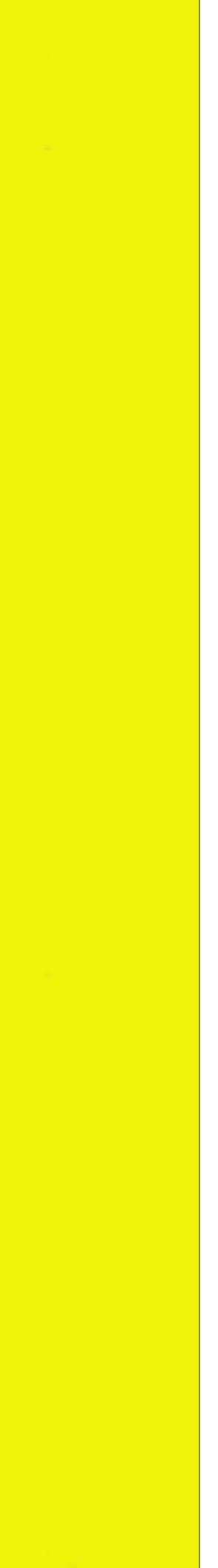
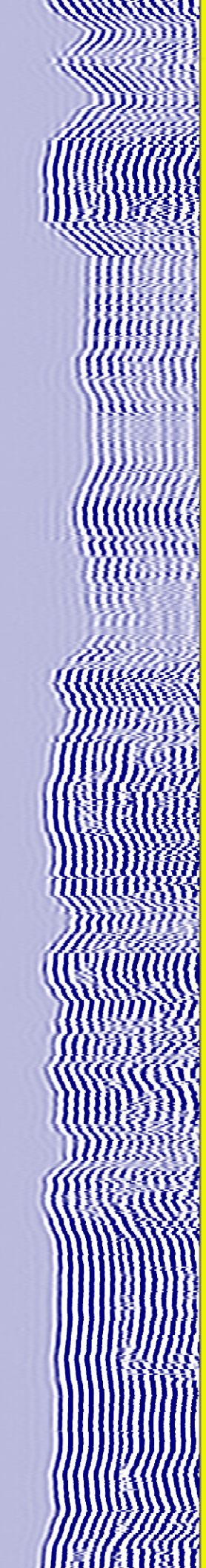
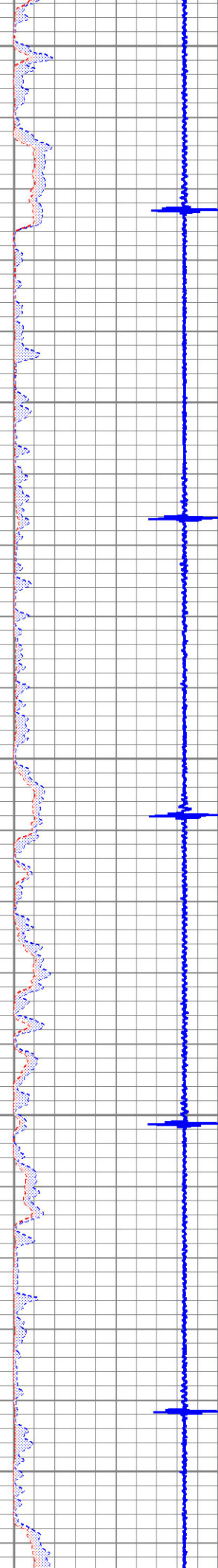
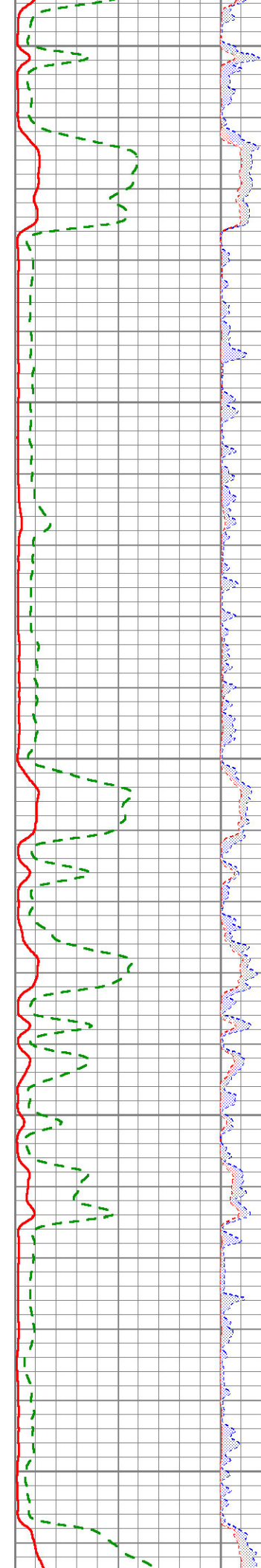
3300

3350

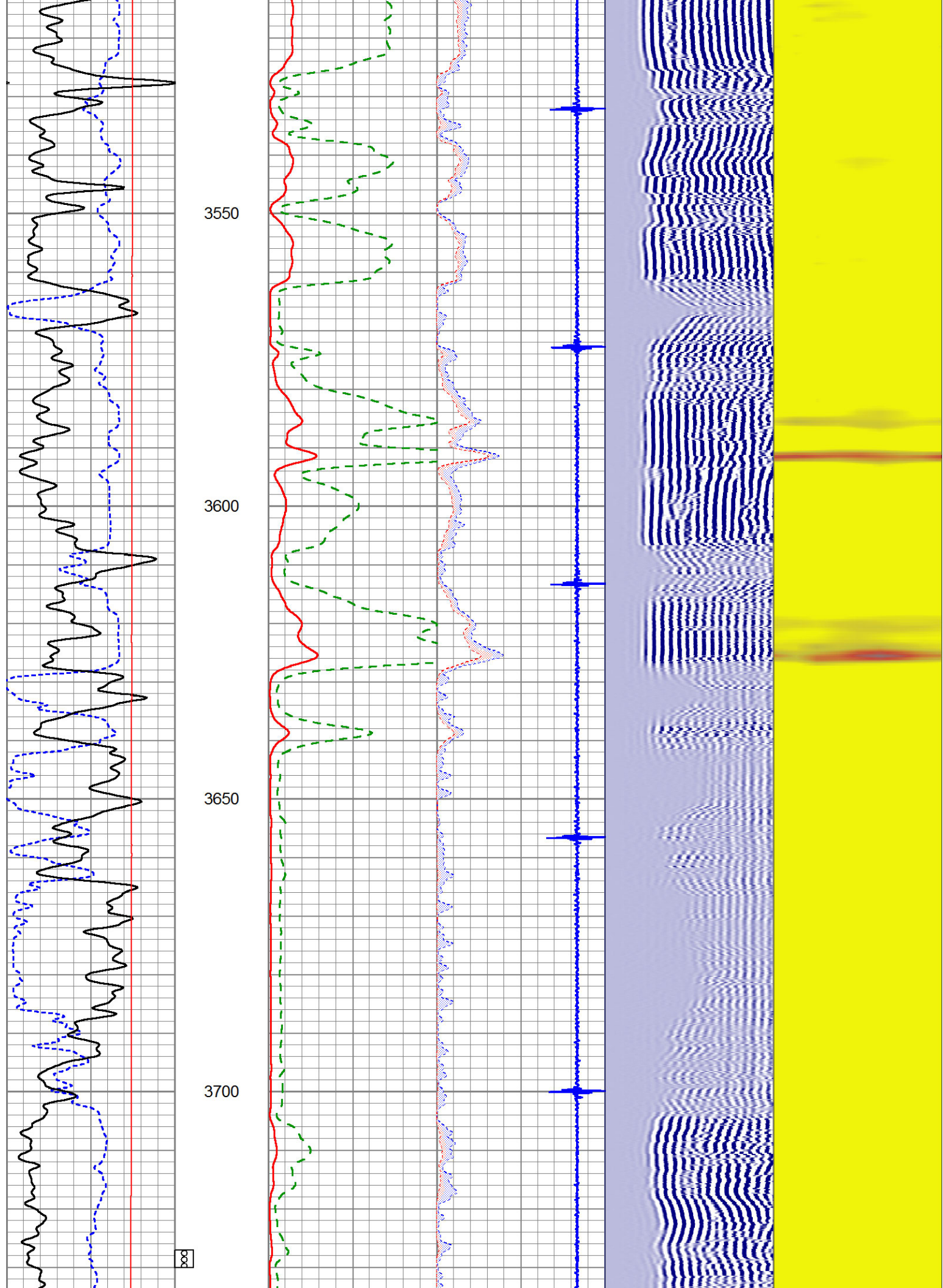
3400

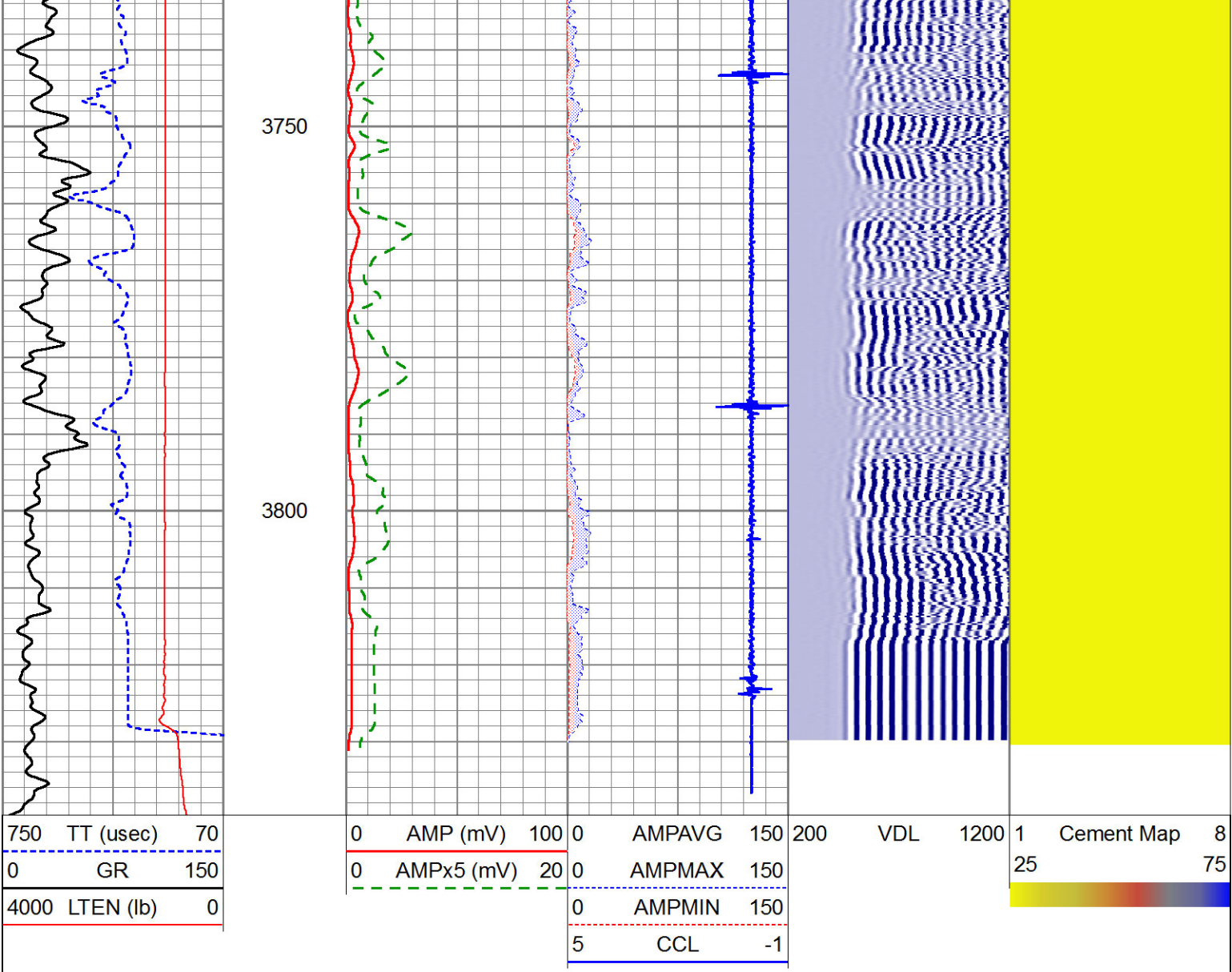
3450

3500



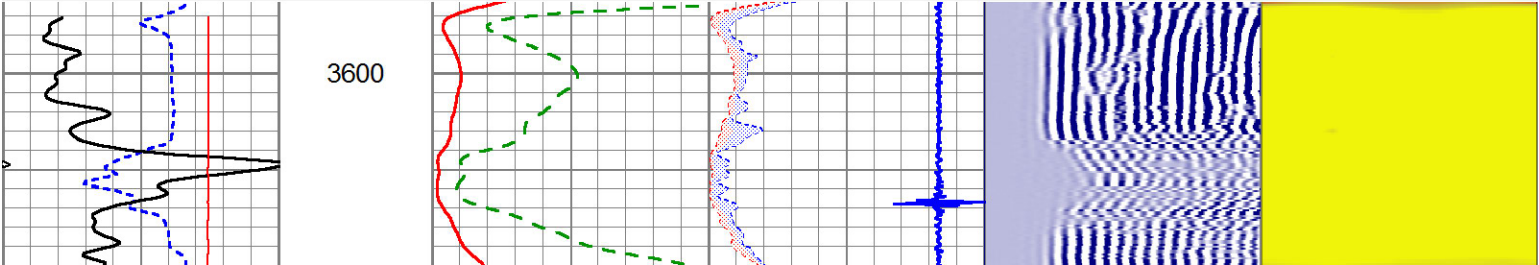
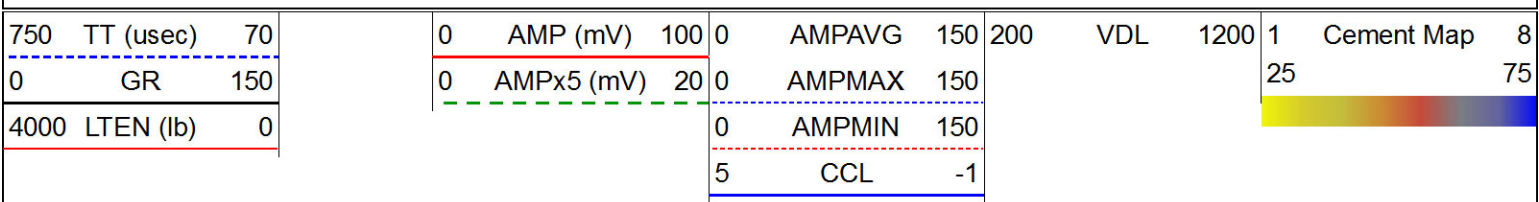




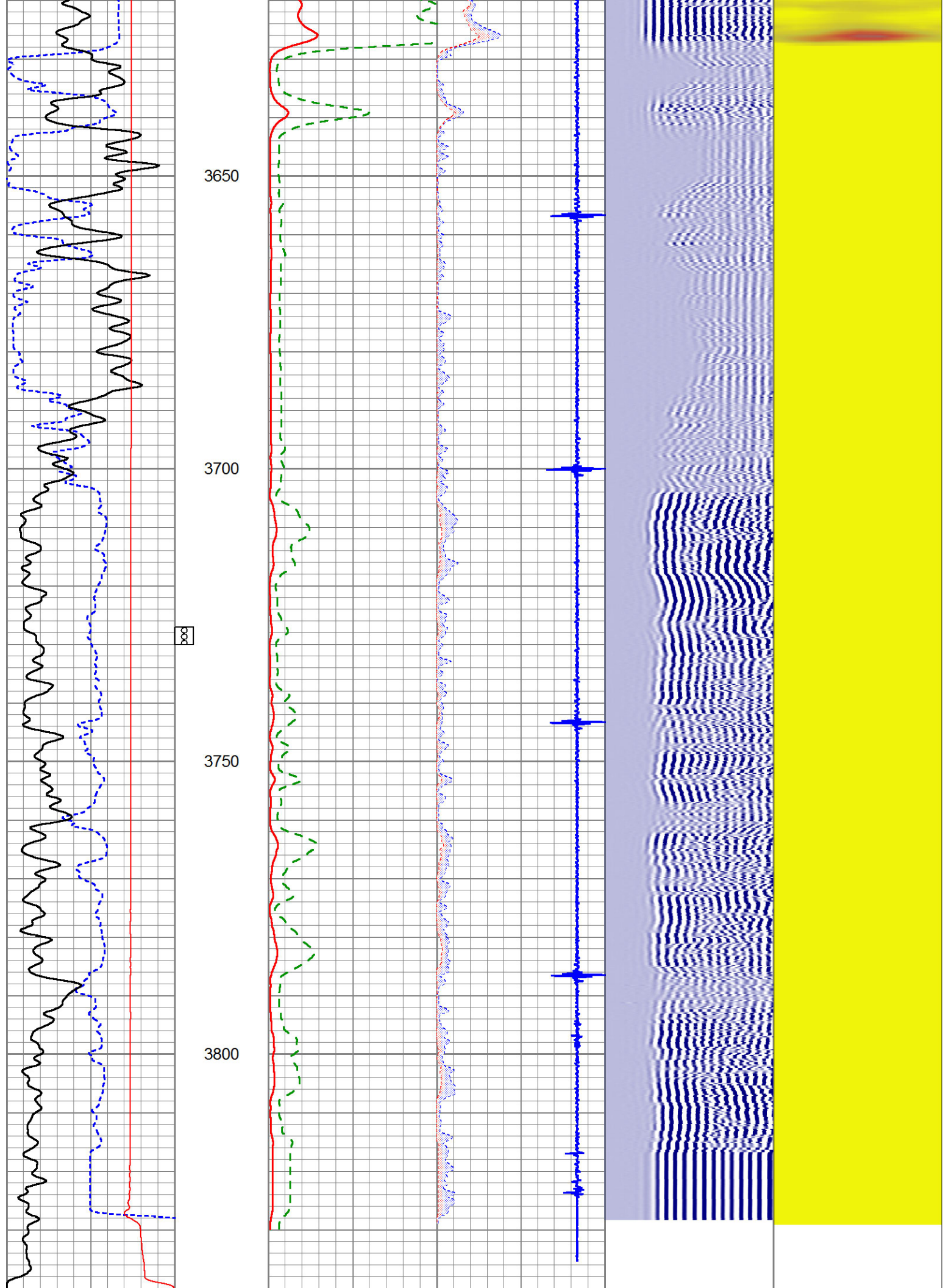


# Repeat Section

Database File: fgholl\_1-15.db  
 Dataset Pathname: sgrcbl/pass3  
 Presentation Format: scblclr2  
 Dataset Creation: Fri Aug 17 08:39:19 2012 by Log SCH 120126  
 Charted by: Depth in Feet scaled 1:240







750	TT (usec)	70
0	GR	150
4000	LTEN (lb)	0

0	AMP (mV)	100	0	AMPAVG	150
0	AMPx5 (mV)	20	0	AMPMAX	150
			0	AMPMIN	150
			5	CCL	-1

200	VDL	1200	1	Cement Map	8
			25		75

