



SUPERIOR
Hays,
Kansas

COMPENSATED
NEUTRON / DENSITY
PE LOG

Company WOOLSEY OPERATING COMPANY, LLC.
 Well LUTHI GU #5
 Field KOCHIA POOL
 County BARBER
 State KANSAS

Company WOOLSEY OPERATING COMPANY, LLC.
 Well LUTHI GU #5
 Field KOCHIA POOL
 County BARBER State KANSAS

Location: API # : 15-007-23873-0000
 1015' FSL & 1420' FEL
 NE - NE - SW - SE
 Permanent Datum GROUND LEVEL Elevation 1441
 Log Measured From KELLY BUSHING 13' A.G.L.
 Drilling Measured From KELLY BUSHING
 SEC 36 TWP 33S RGE 11W
 Other Services DIL/SON
 Elevation
 K.B. 1454
 D.F. 1452
 G.L. 1441

Date	6/2/12		
Run Number	ONE		
Depth Driller	5092		
Depth Logger	5097		
Bottom Logged Interval	5073		
Top Log Interval	1700		
Casing Driller	10 3/4" @ 217'		
Casing Logger	214		
Bit Size	7 7/8		
Type Fluid in Hole	CHEMICAL MUD	CHLORIDES 5000 PPM	
Density / Viscosity	9.2/45		
pH / Fluid Loss	10.0/9.2		
Source of Sample	FLOWLINE		
Rim @ Meas. Temp	.70 @ 89F		
Rmf @ Meas. Temp	.52 @ 89F		
Rmc @ Meas. Temp	.84 @ 89F		
Source of Rmf / Rmc	MEASURED		
Rim @ BHT	.49 @ 125F		
Time Circulation Stopped	2 HOURS		
Time Logger on Bottom			
Maximum Recorded Temperature	125F		
Equipment Number	680		
Location	HAYS, KS.		
Recorded By	JASON CAPPELLUCCI		
Witnessed By	SCOTT ALBERG		

<<< Fold Here >>>

All interpretations are opinions based on inferences from electrical or other measurements and we cannot and do not guarantee the accuracy or correctness of any interpretation, and we shall not, except in the case of gross or willful negligence on our part, be liable or responsible for any loss, costs, damages, or expenses incurred or sustained by anyone resulting from any interpretation made by any of our officers, agents or employees. These interpretations are also subject to our general terms and conditions set out in our current Price Schedule.

Comments

THANK YOU FOR USING SUPERIOR WELL SERVICE (785) 628-6395
 DIRECTIONS
 MEDICINE LODGE, KS. - 9 S. TO GERLANE RD. - 8 E. TO CEDAR HILLS RD.
 1/4 N. - W. INTO

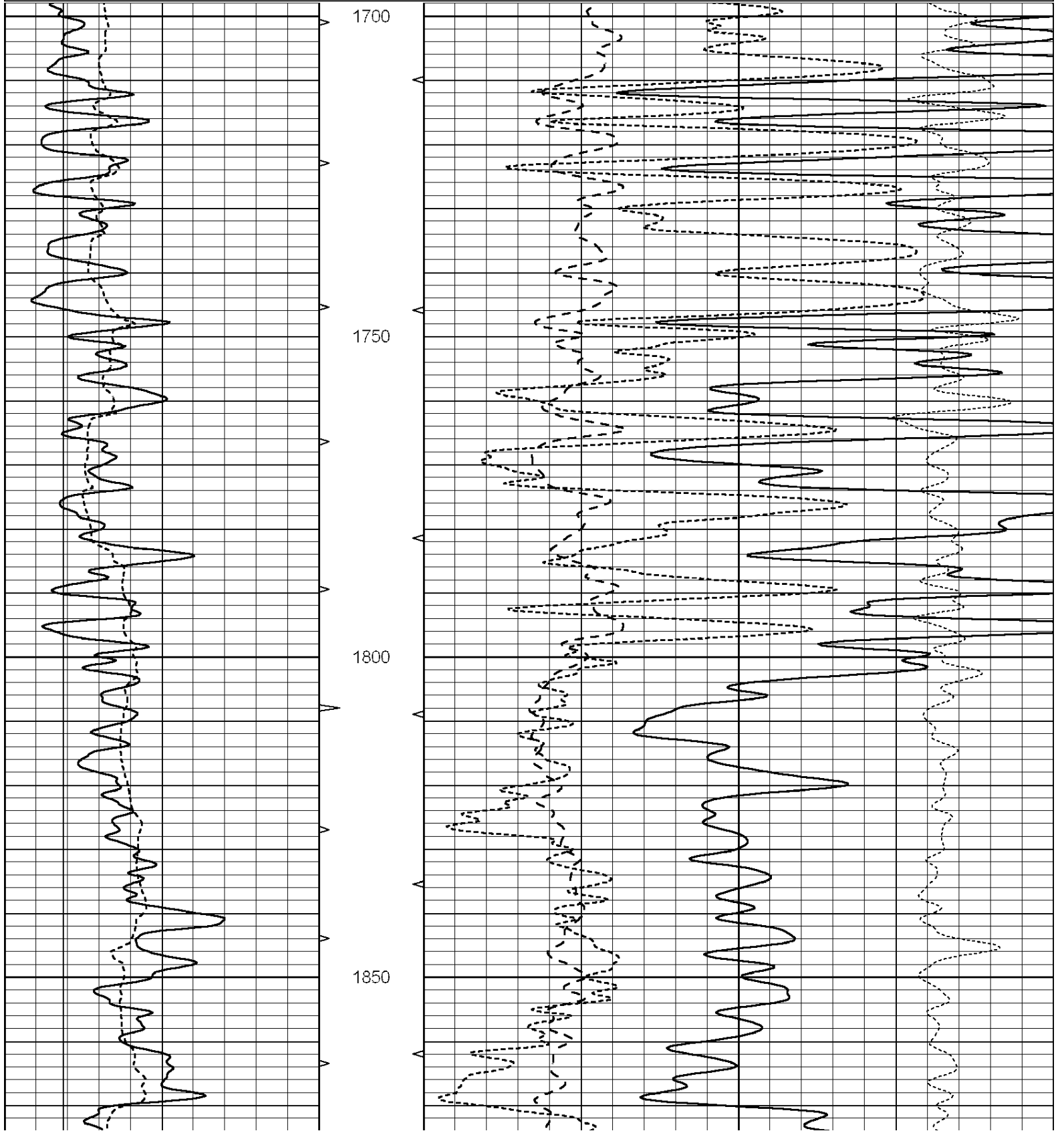


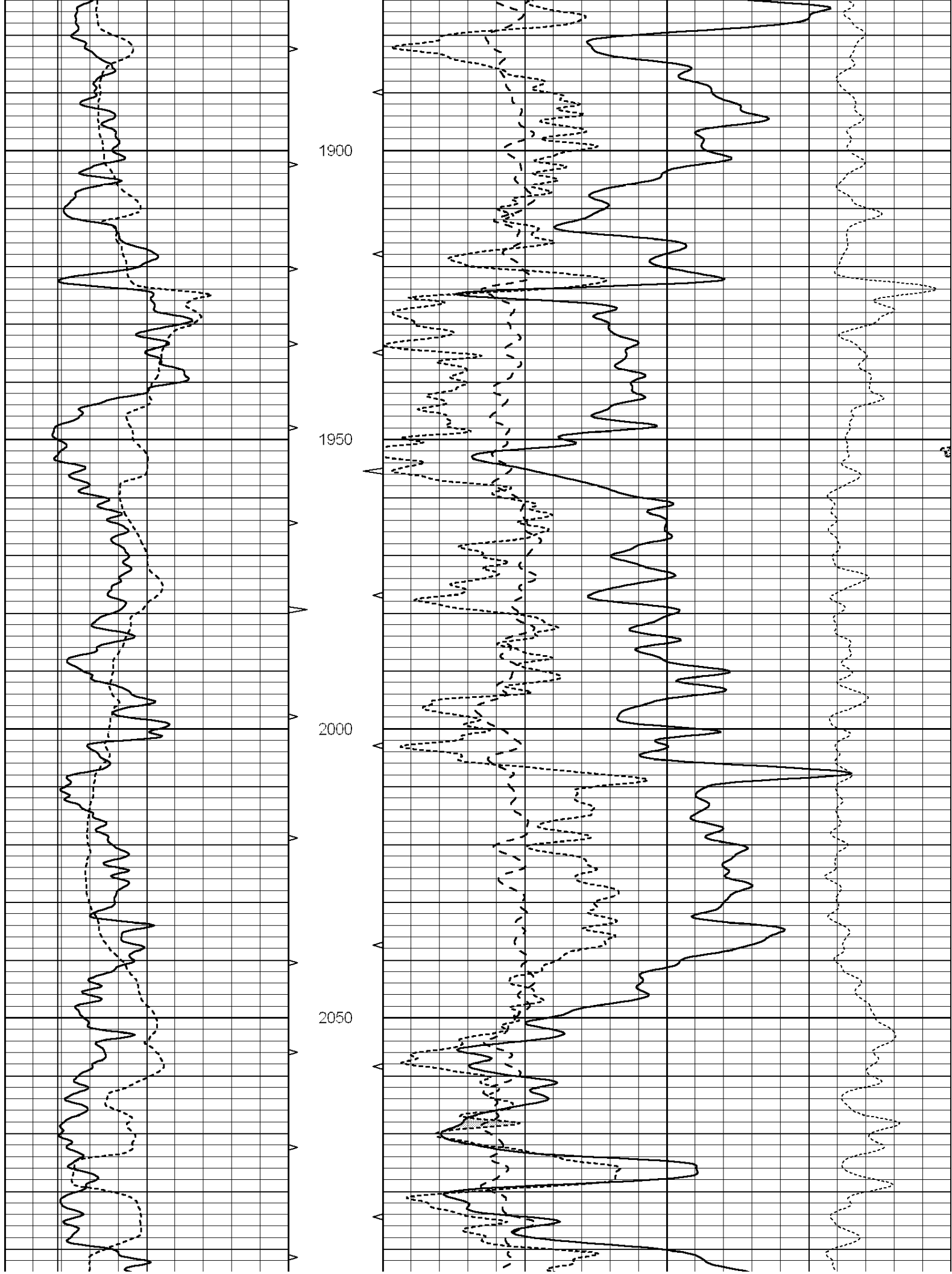
SUPERIOR
Hays,
Kansas

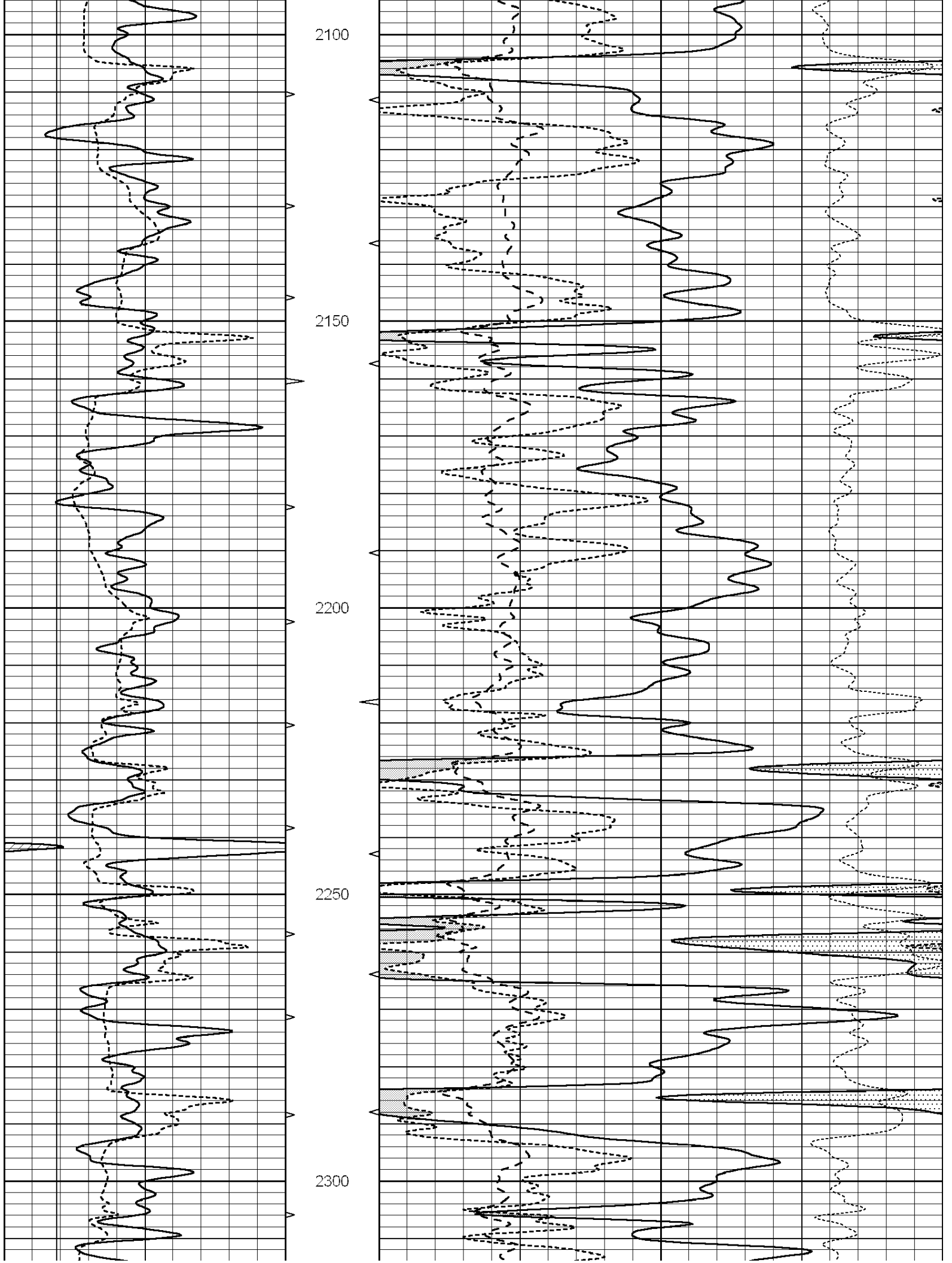
MAIN SECTION

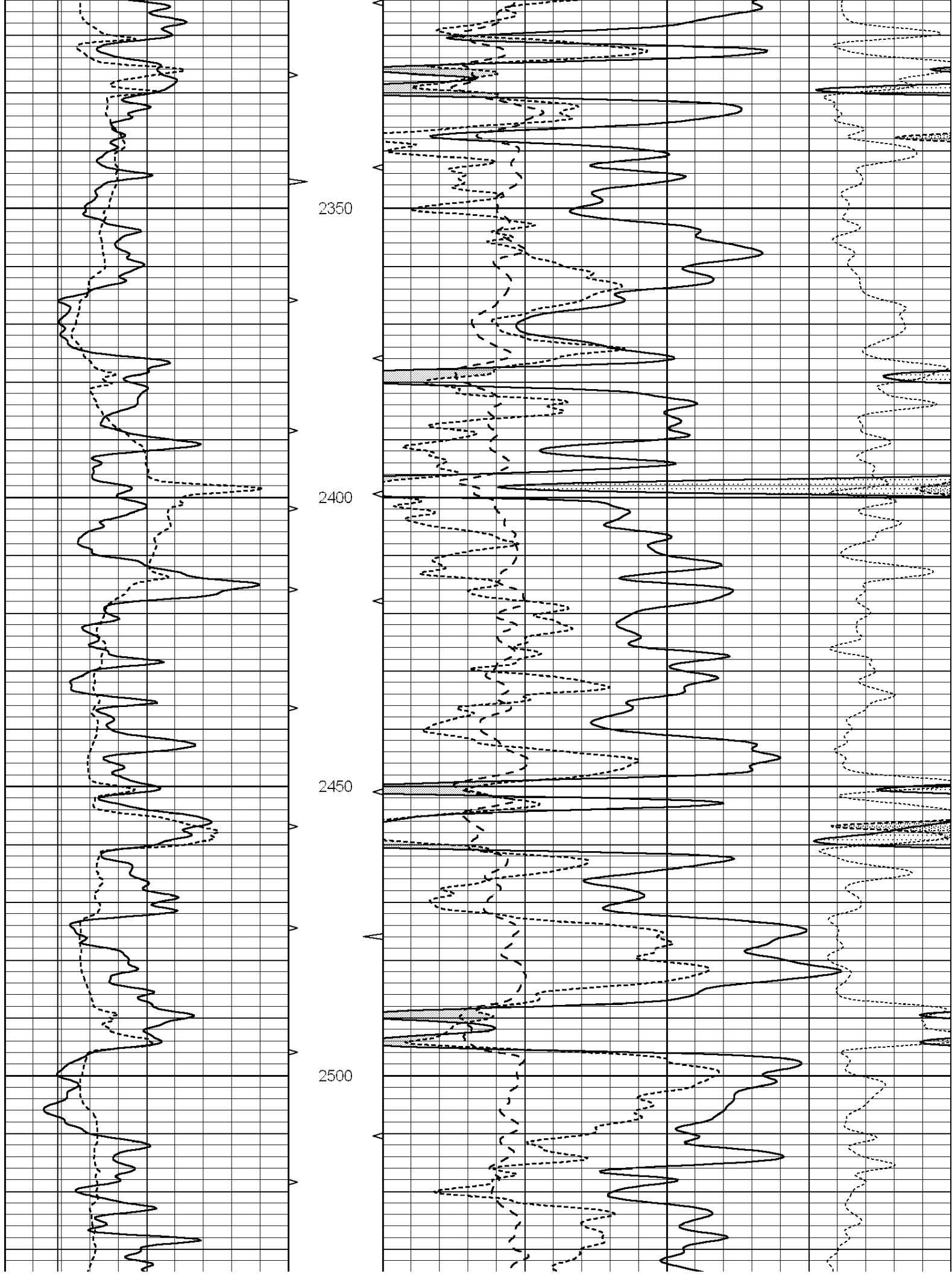
Database File: 009212pe.db
 Dataset Pathname: pass3.1
 Presentation Format: _ldt_neu
 Dataset Creation: Sat Jun 02 19:24:28 2012 by Calc Open-Cased 090629
 Charted by: Depth in Feet scaled 1:240

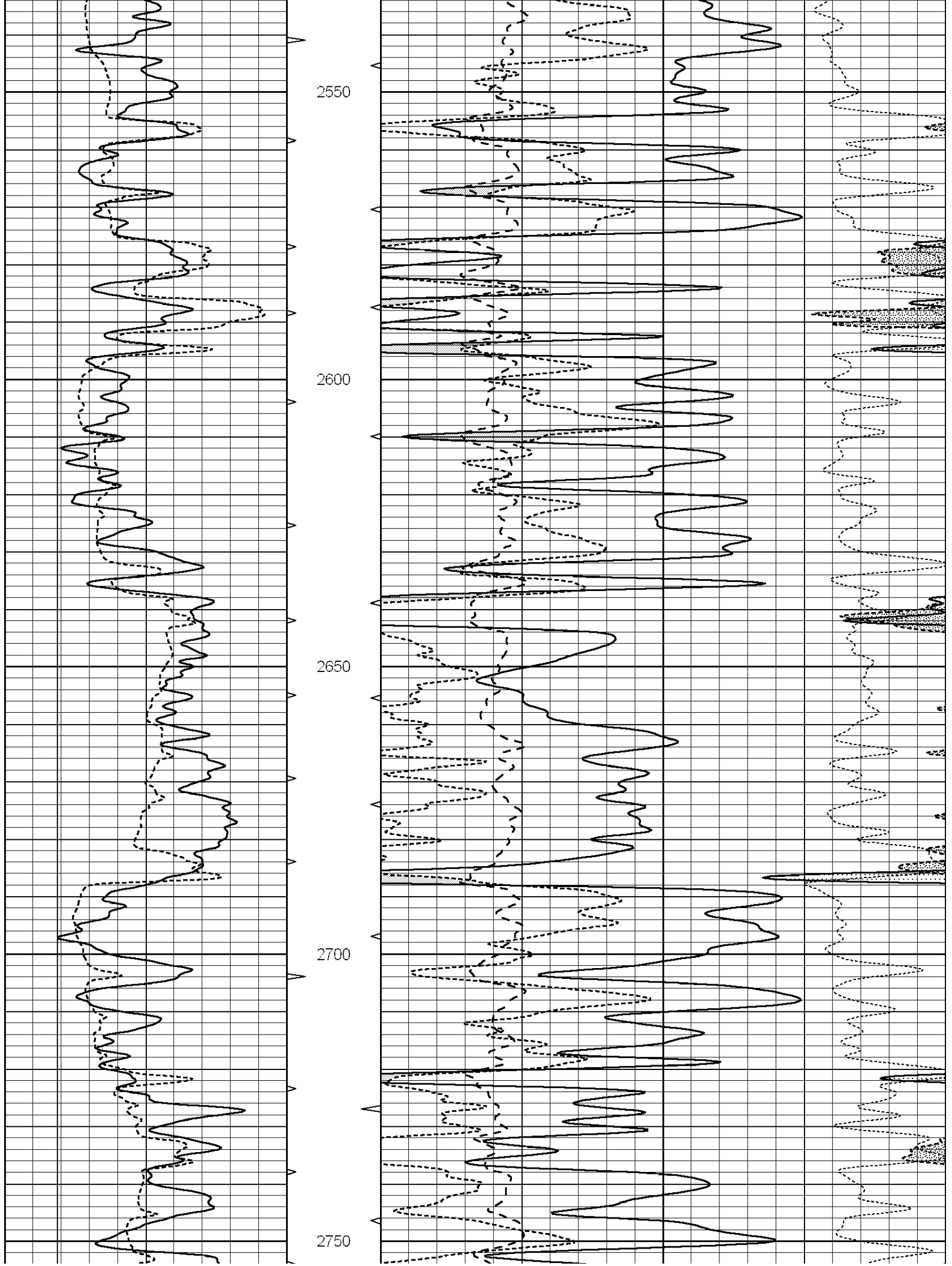
0	GAMMA RAY (GAPI)	150	ABHV	30	COMPENSATED DENSITY (pu)		-10		
6	CALIPER (in)	16	10 (ft3)	0	30	COMPENSATED NEUTRON (pu)		-10	
			TBHV	0	PE	10	-0.25	CORRECTION (g/cc)	0.25
			0 (ft3)	10					

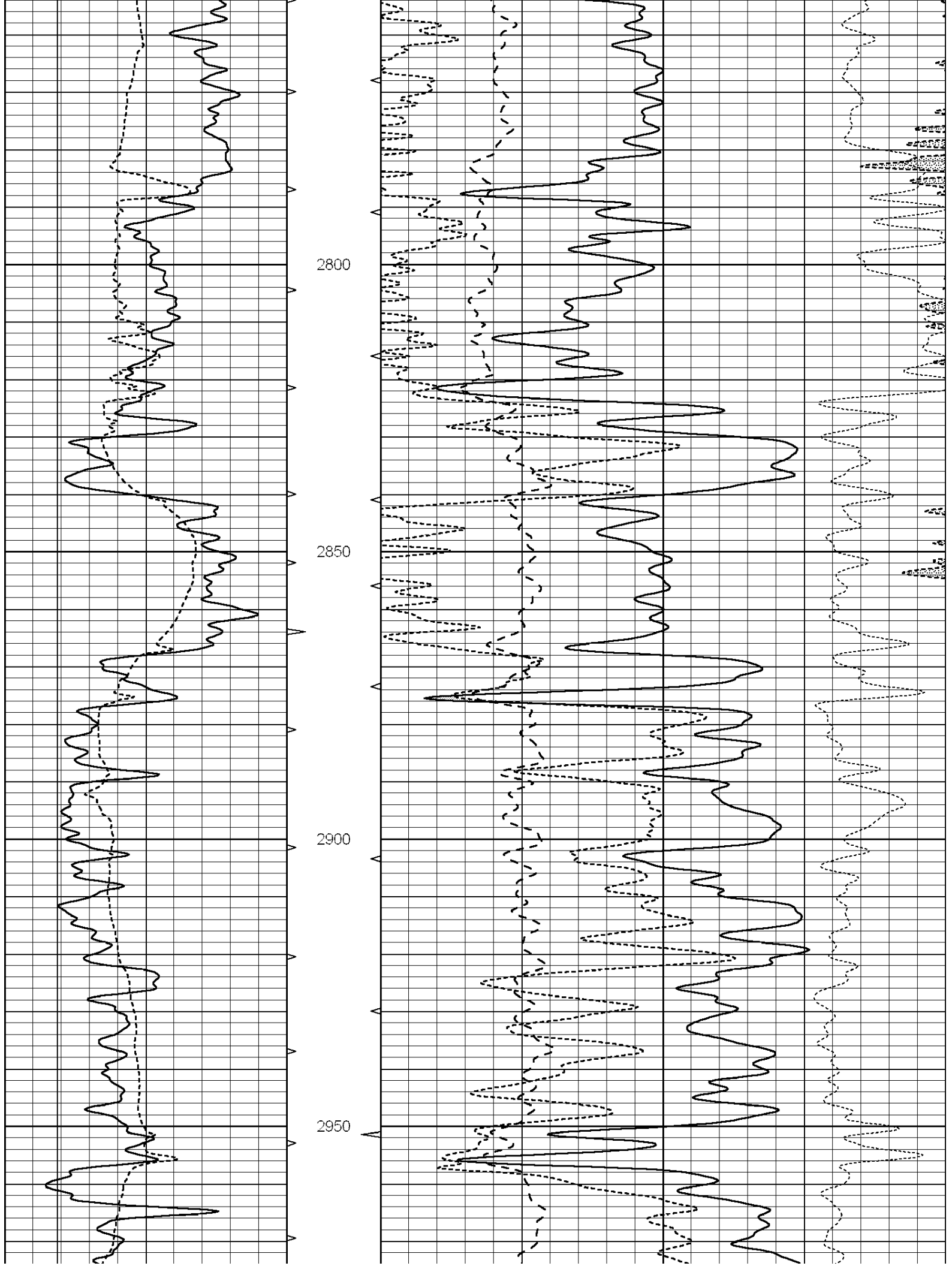


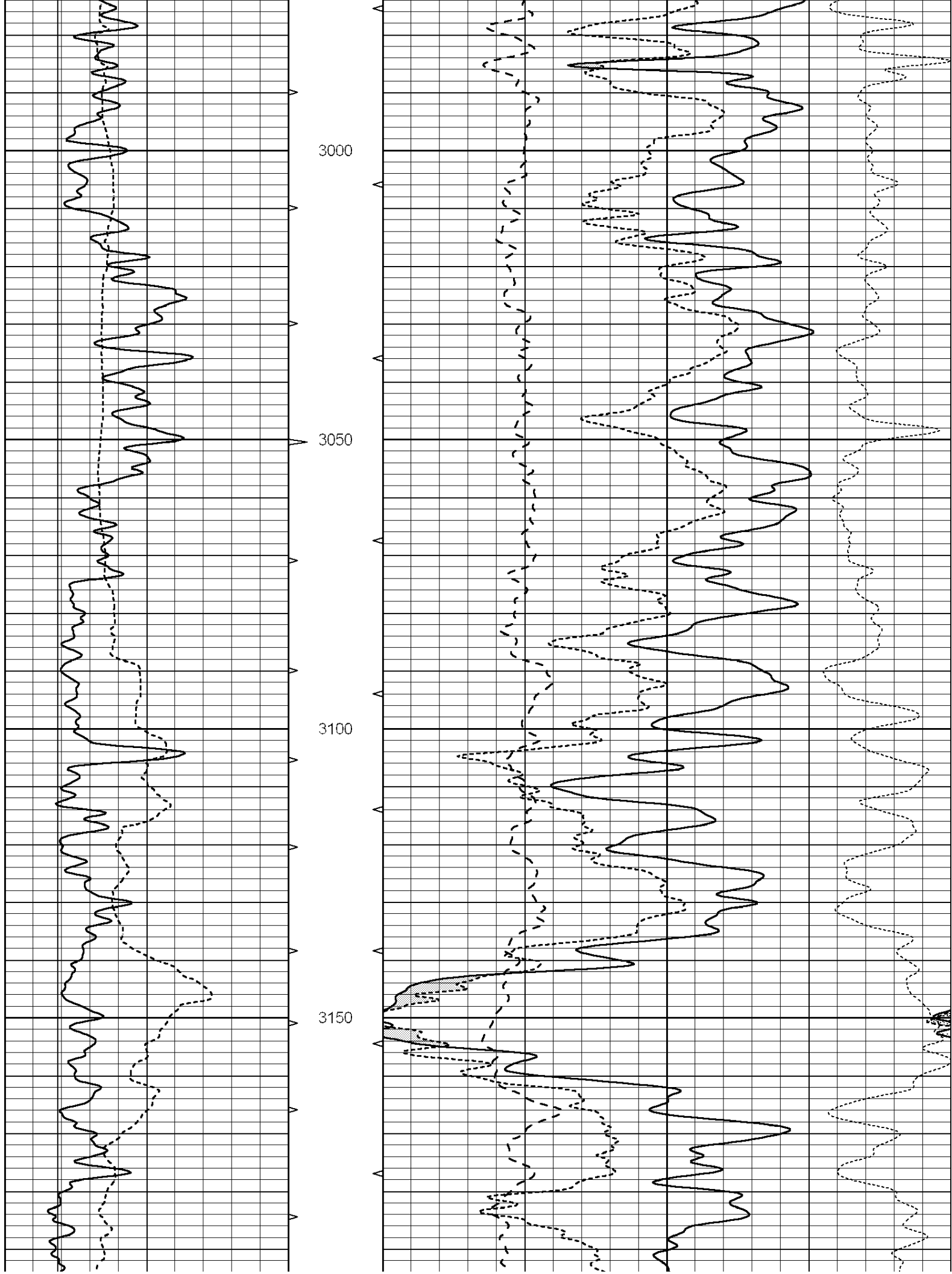


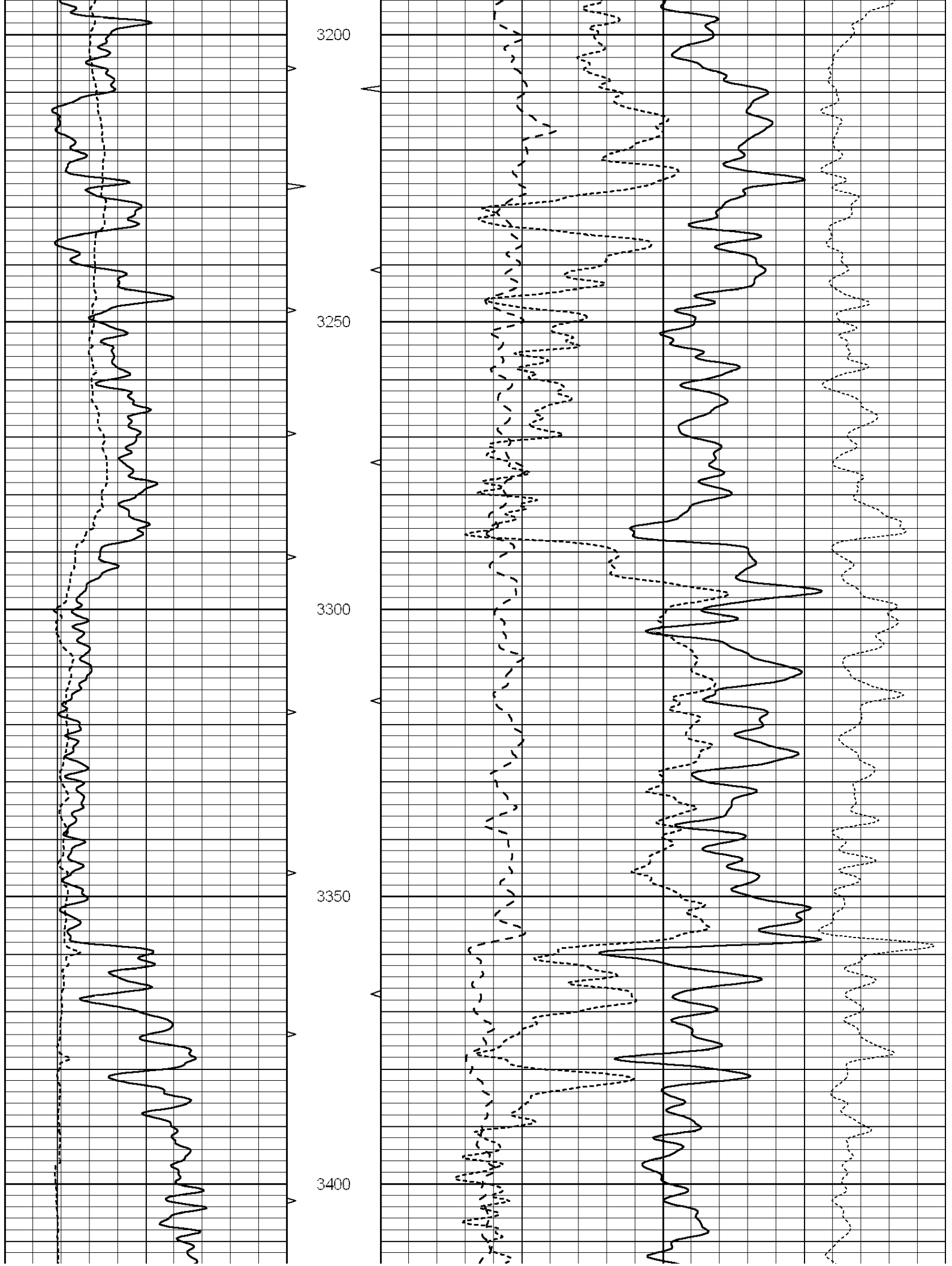


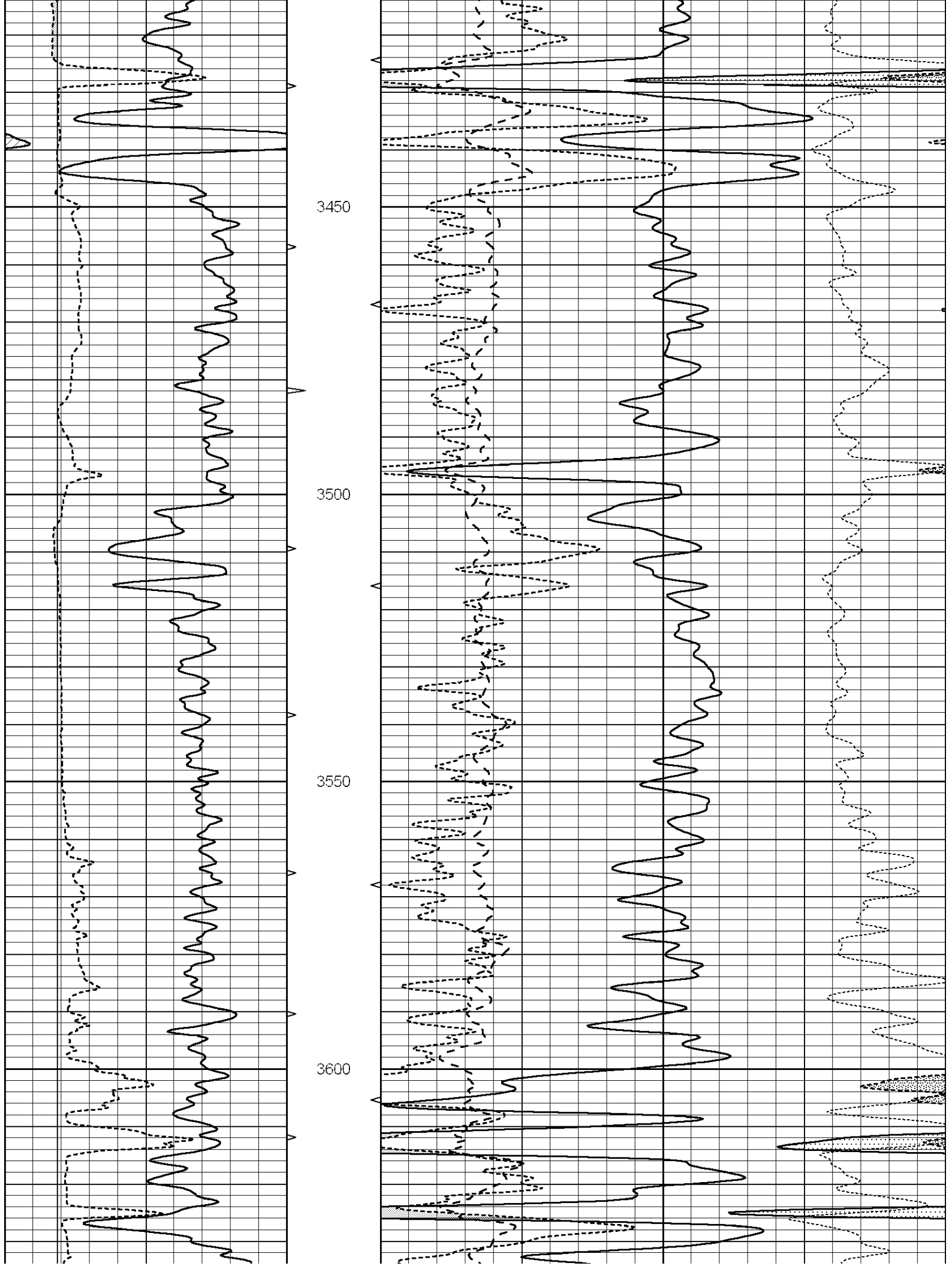


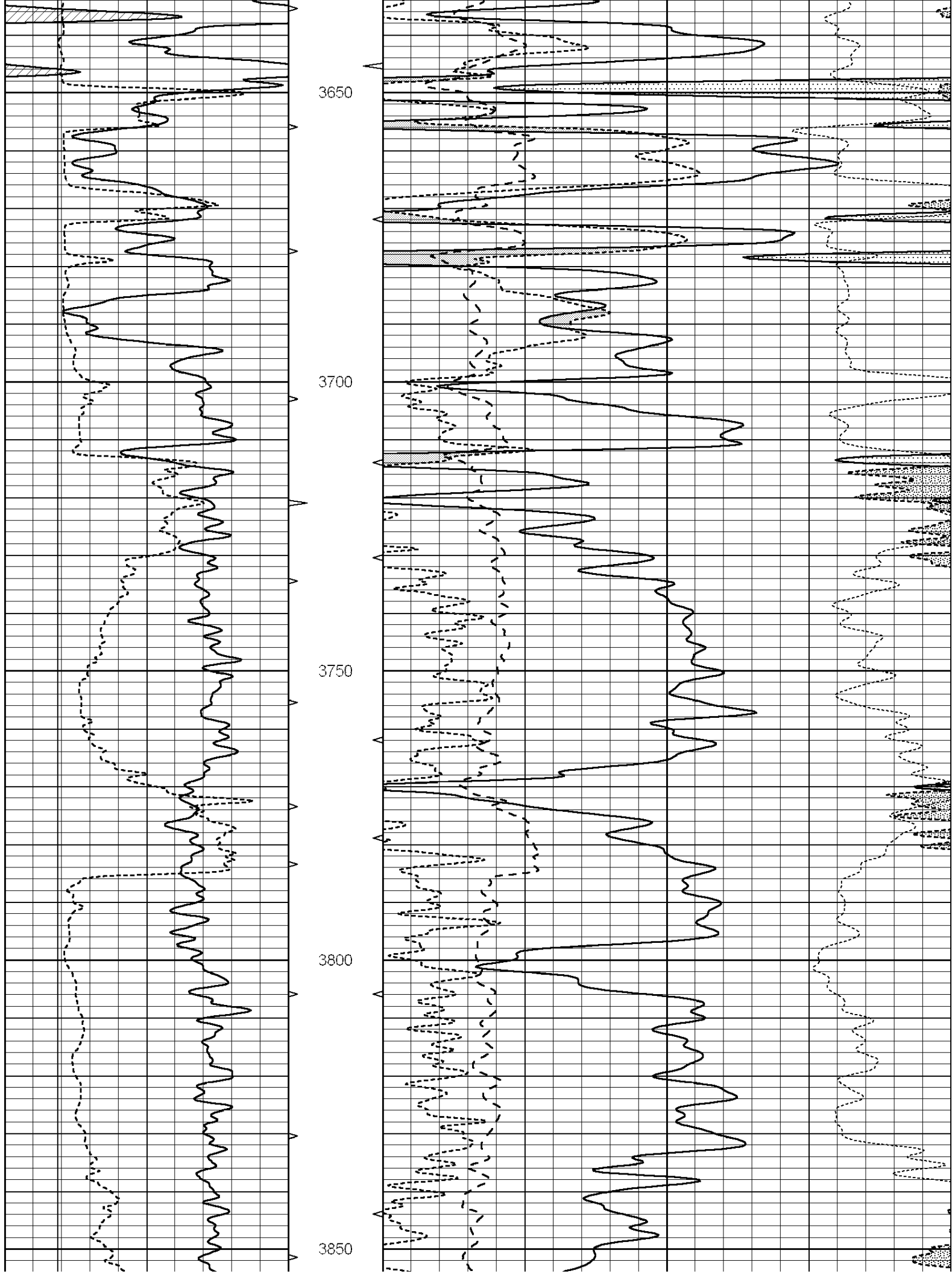


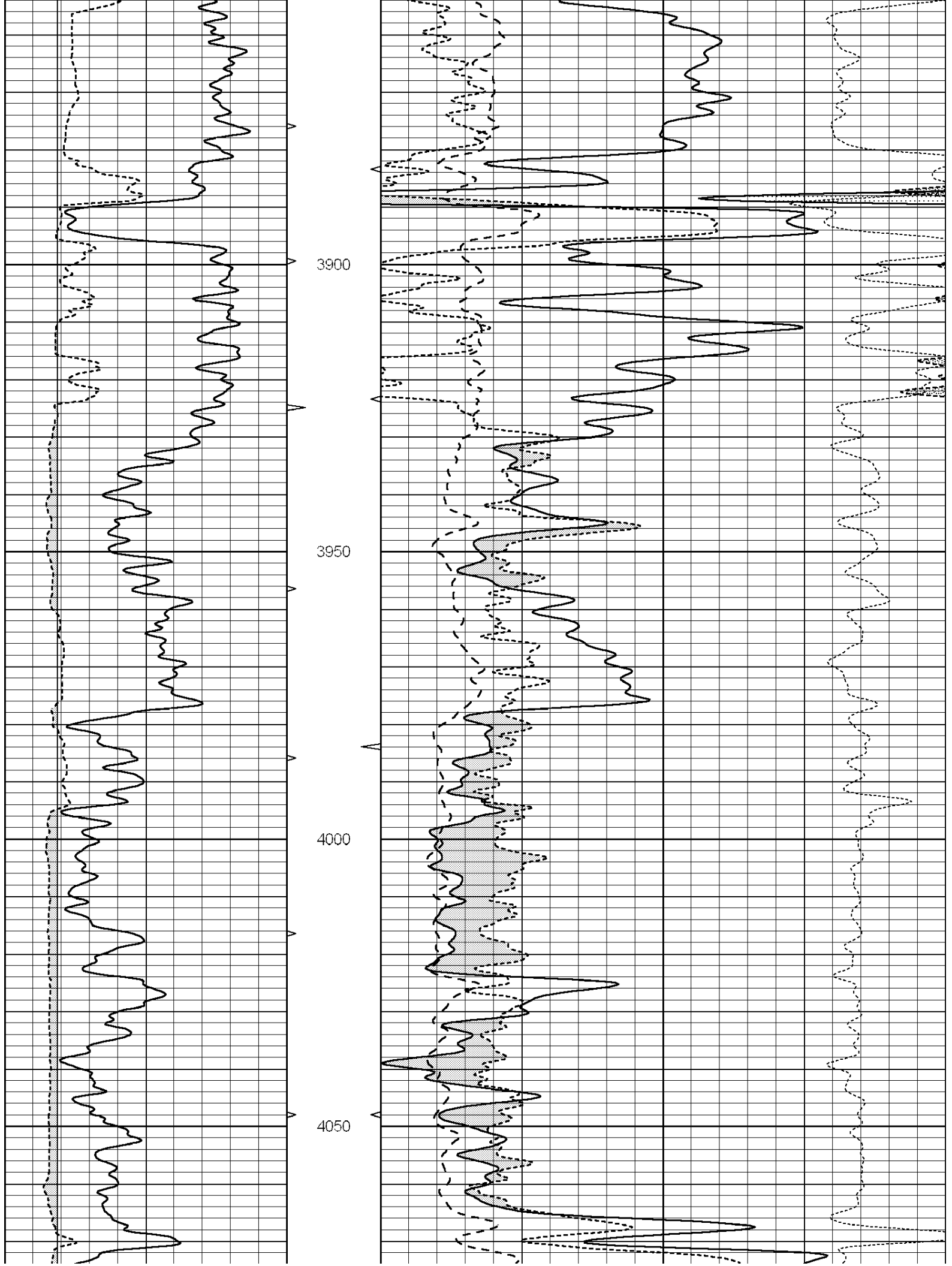


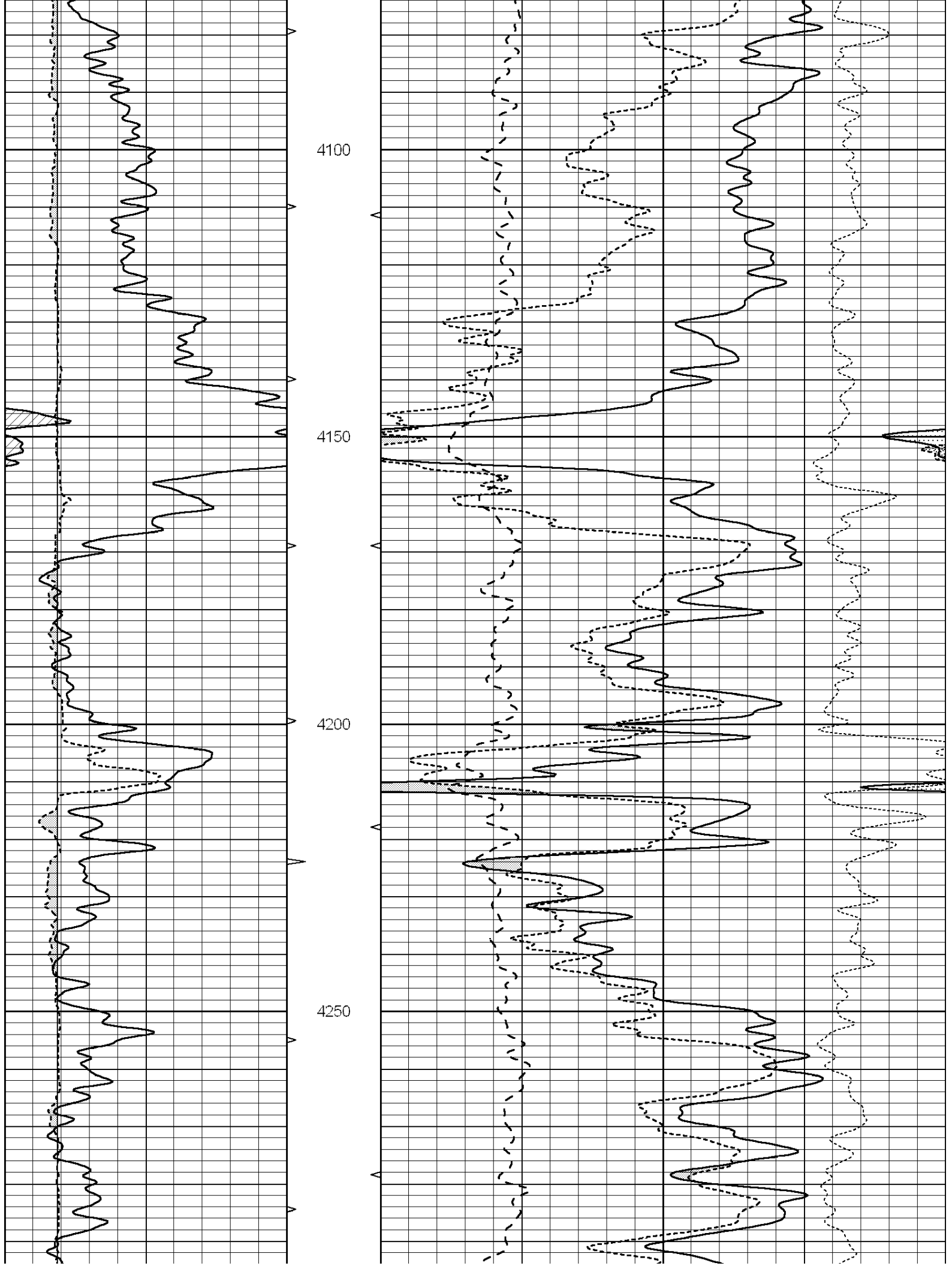


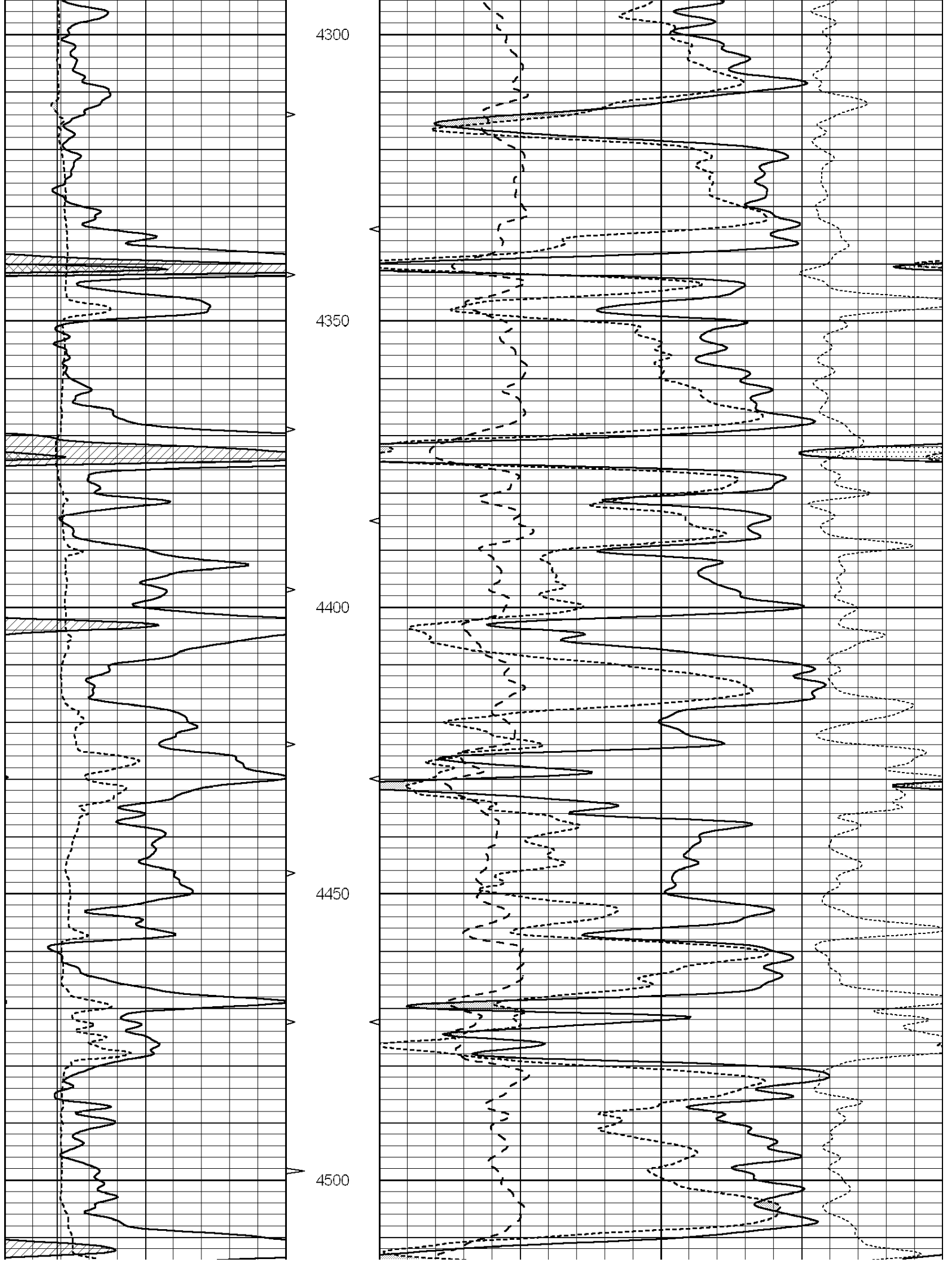


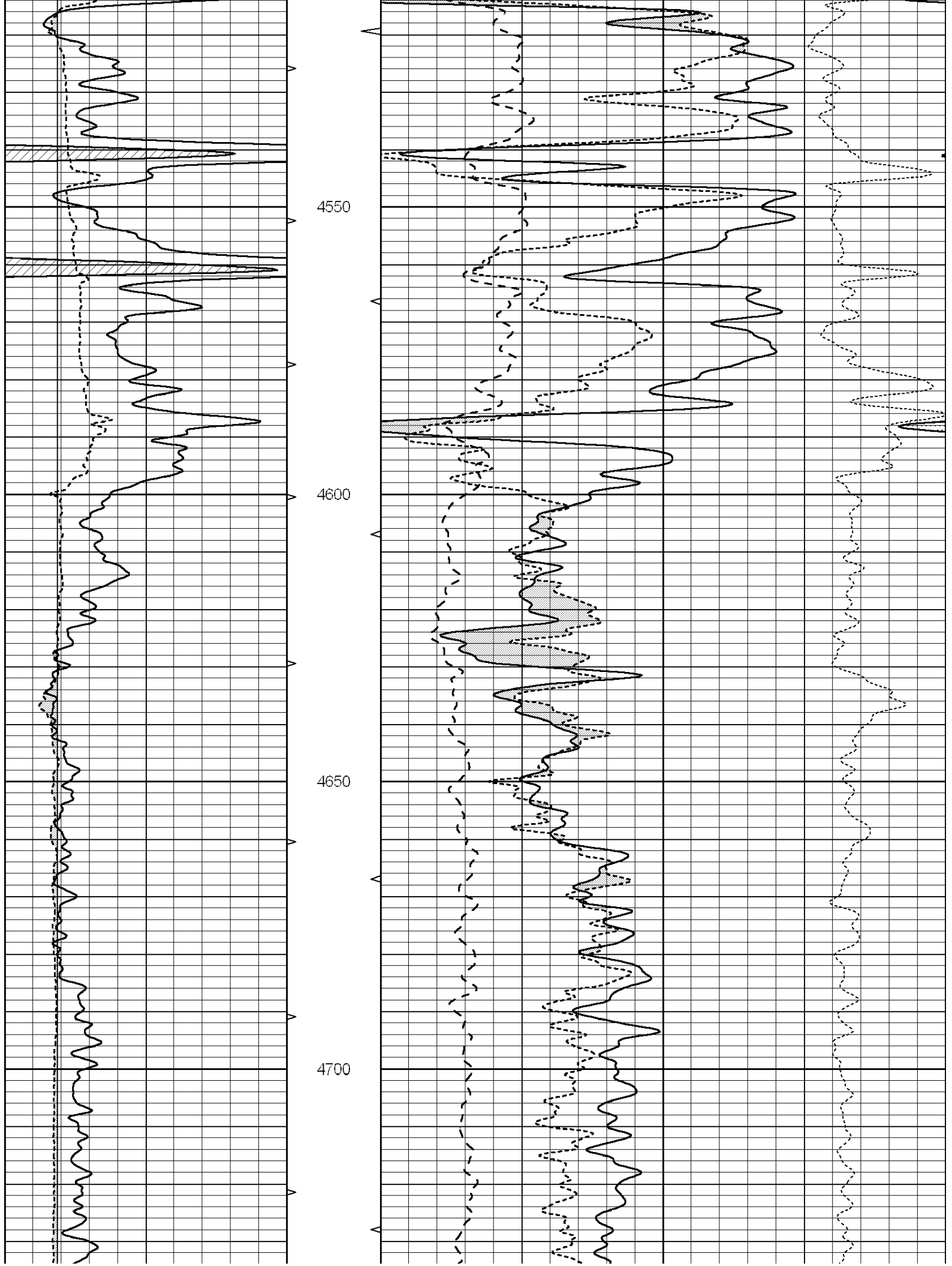


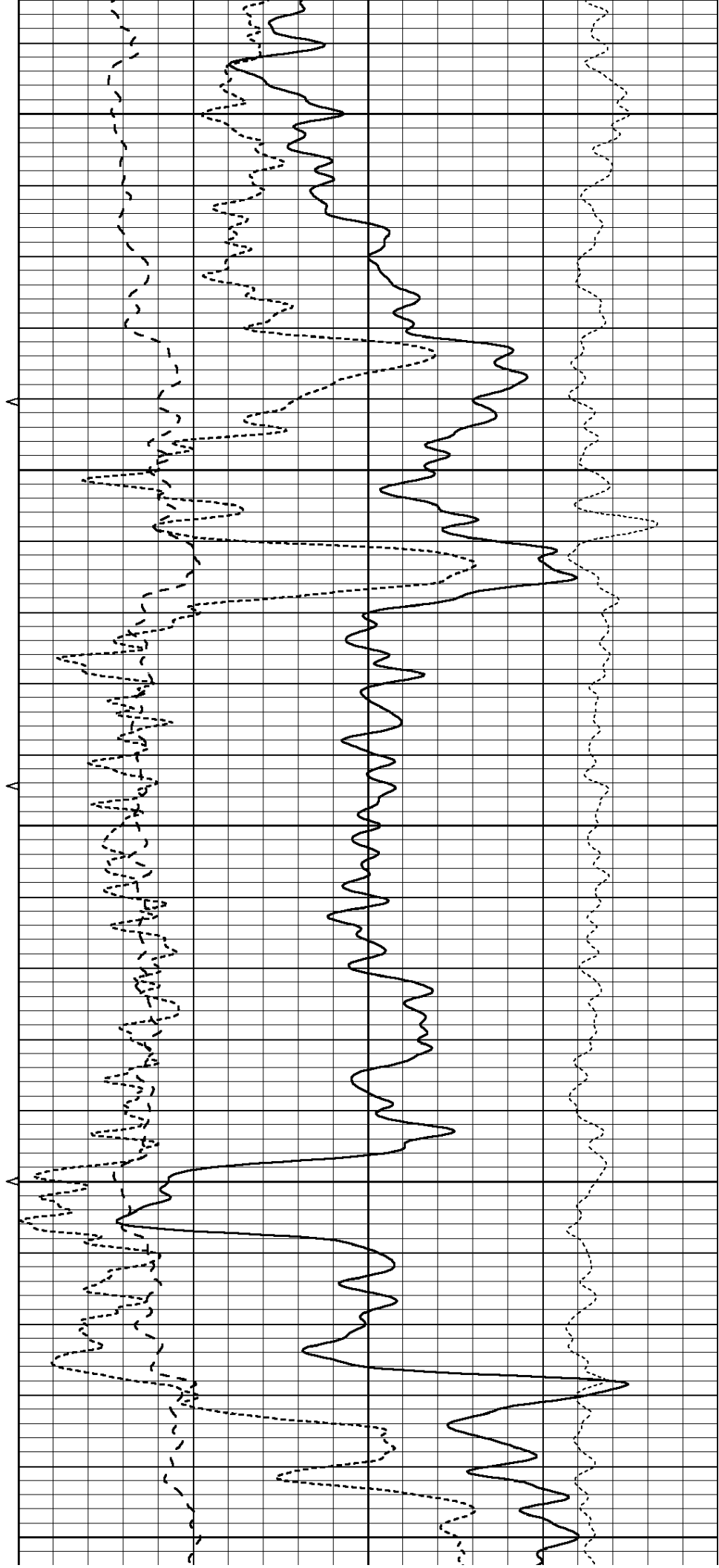
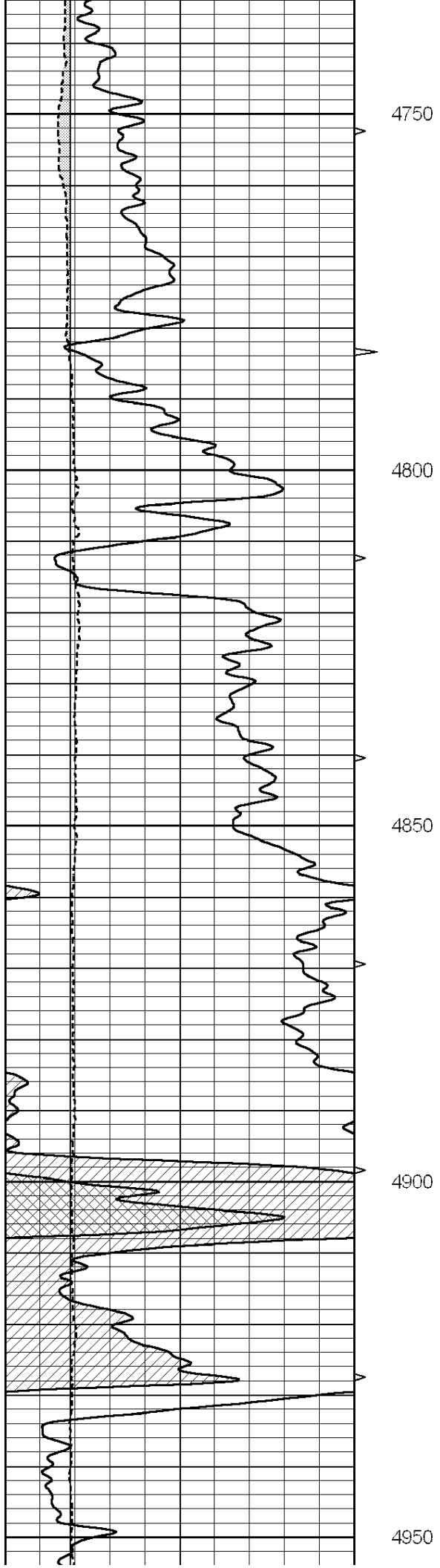


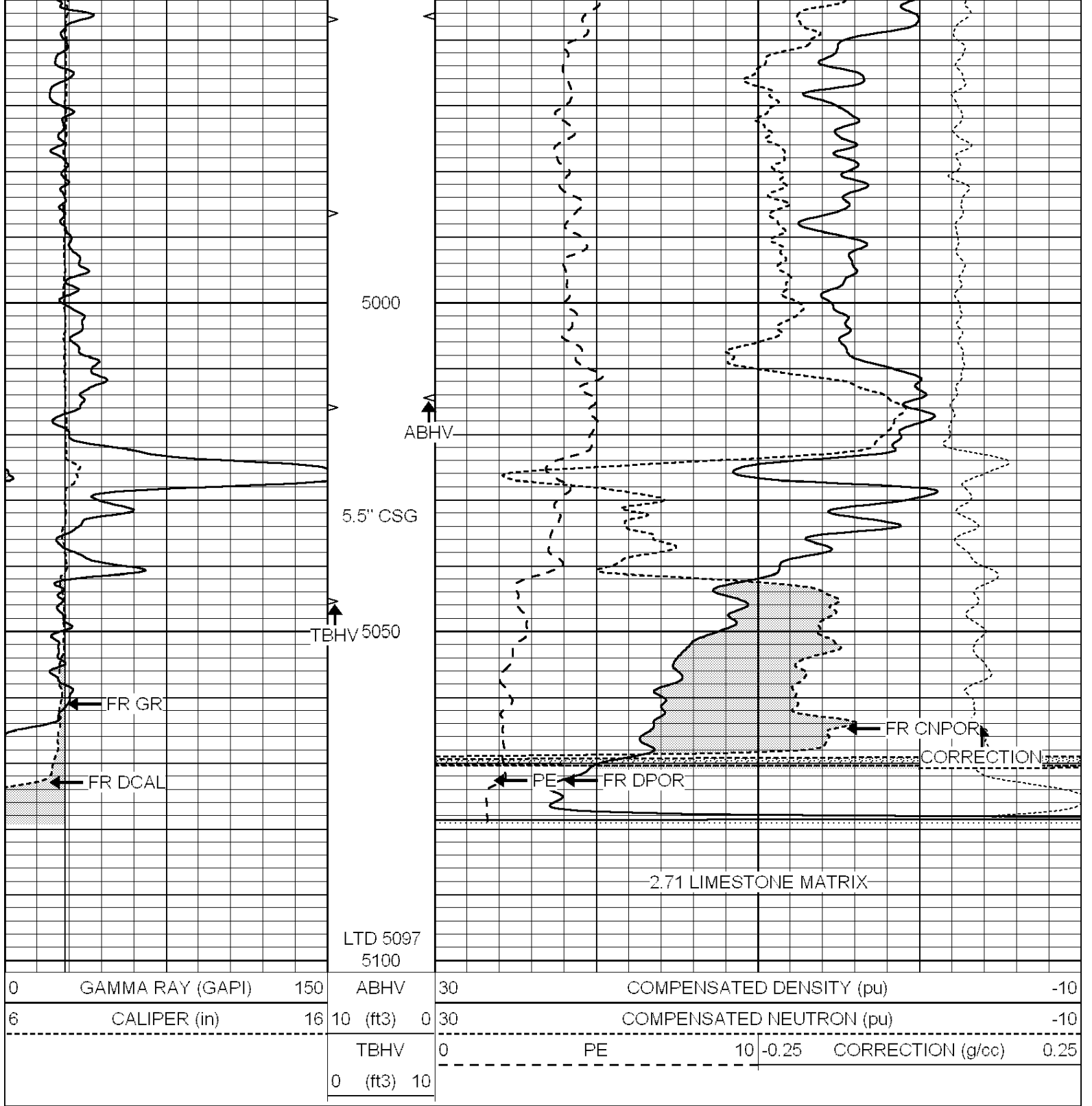












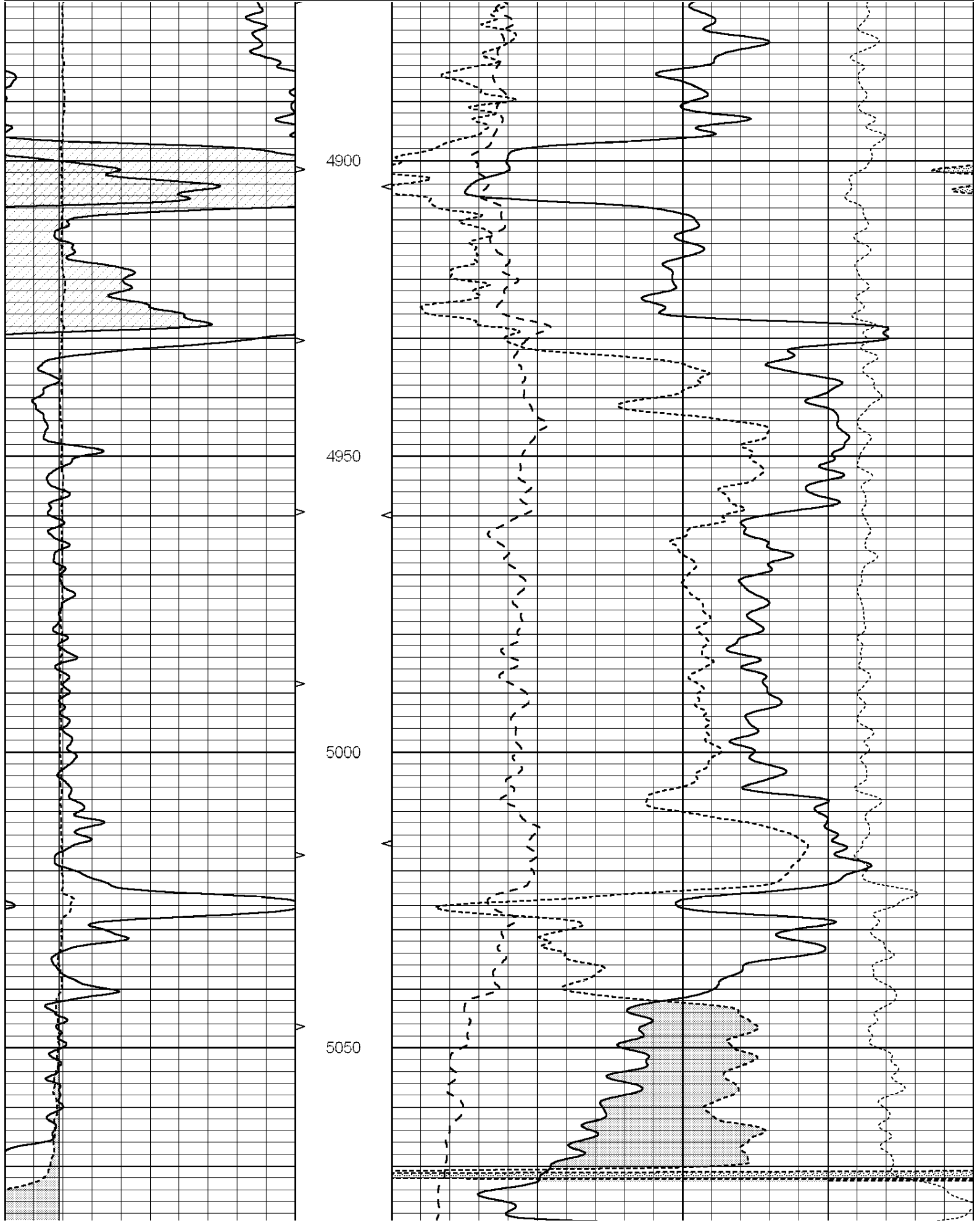
SUPERIOR
Hays,
Kansas

REPEAT SECTION

Database File: 009212pe.db
 Dataset Pathname: pass2.1
 Presentation Format: _ldt_neu
 Dataset Creation: Sat Jun 02 19:21:27 2012 by Calc Open-Cased 090629
 Charted by: Depth in Feet scaled 1:240

0	GAMMA RAY (GAPI)	150	ABHV	30	COMPENSATED DENSITY (pu)	-10		
6	CALIPER (in)	16	10 (ft3)	0	30	COMPENSATED NEUTRON (pu)	-10	
			TBHV	0	PE	10 -0.25	CORRECTION (g/cc)	0.25
			0 (ft3)	10				

CALIPER (in)	16	10 (ft3)	0 30	PE	10 -0.25	CORRECTION (g/cc)	0.25
TBHV	0	(ft3)	10				



	Background	Magnesium	Aluminum	Sandstone	
Window 1	2056.0	9796.8	3673.1	10821.3	cps
Window 2	1920.0	8541.1	3303.5	9307.2	cps
Window 3	1563.1	4735.7	2212.8	5017.5	cps
Window 4	466.0	466.1	465.6	471.5	cps
Long Space	0.0	6621.1	1383.5	7387.2	cps
Short Space	2.5	2361.7	1523.2	2534.0	cps
Rho		1.7100	2.5900	1.3800	g/cc
Pe			2.5700	1.5500	
Rib Angle	: 44.4	Rib Slope	: 0.978	Density/Spine Ratio	: 0.541
Spine Angle	: 74.4	Spine Slope	: 3.570	Spine Intercept	: -18.9

Caliper	Readings	Reference	
Low Ref	3.1	8.4	
High Ref	4.3	14.3	
	Gain: 4.6		Offset: -7.7

Compensated Neutron Calibration Report

Serial Number: 6I
Tool Model: G

CALIBRATION

Detector	Readings	Target	Normalization
Short Space	1.00 cps	1.00 cps	1.0000
Long Space	1.00 cps	1.00 cps	1.0000

Gamma Ray Calibration Report

Serial Number: #8
Tool Model: OPEN
Performed: Mon Jun 13 16:56:43 2011

Calibrator Value: 150.0 GAPI

Background Reading: 0.0 cps
Calibrator Reading: 175.0 cps

Sensitivity: 0.8371 GAPI/cps