



Pioneer Energy Services

**Sonic Cement
Bond Log**

15-109-21092-00-00

Company Shakespeare Oil Company, Inc.
Well Foster No. 1-17
Field Wildcat
County Logan **State Kansas**

Location

800' FNL & 2289' FEL

Sec: 17 Twp: 14S Rge: 32W

Other Services
Perforate

Permanent Datum Ground Level Elevation 2773
 Log Measured From Kelly Bushing 10' Ft. Above Perm. Datum
 Drilling Measured From Kelly Bushing

Elevation
 K.B. 2783
 D.F. 2781
 G.L. 2773

Run Number	One
Date Survey	8/27/2012
Date Cementing	8/14/2012
Type Cementing Operation	Primary
Depth Driller	4550
Depth Logger	4491
Logged Interval	4489 to 2200
Casing Driller	5.5 @ T.D.
Float Collar -- D.V. Tool	2272 @
Squeeze Depth	
Amount & Type Cement	
Amount & Type Admix	
Type Fluid In Hole	Water
Fluid Level	Full
Salinity PPM CL	
Weight lb/gal -- Vis.	
Approx. Logged Cement Top	
Calculated Cement Top	
Max. Hole Temperature	113
Tool No.	D-1
Spacing Recorded	3-5
Equipment -- Location	72 Hays
Recorded By	K. Ladrigan
Witnessed By	Tom Larson

<<< Fold Here >>>

All interpretations are opinions based on inferences from electrical or other measurements and we cannot and do not guarantee the accuracy or correctness of any interpretation, and we shall not, except in the case of gross or willful negligence on our part, be liable or responsible for any loss, costs, damages, or expenses incurred or sustained by anyone resulting from any interpretation made by any of our officers, agents or employees. These interpretations are also subject to our general terms and conditions set out in our current Price Schedule.

Comments

Thank you for using Pioneer Energy Services, Inc. 785.625.3858

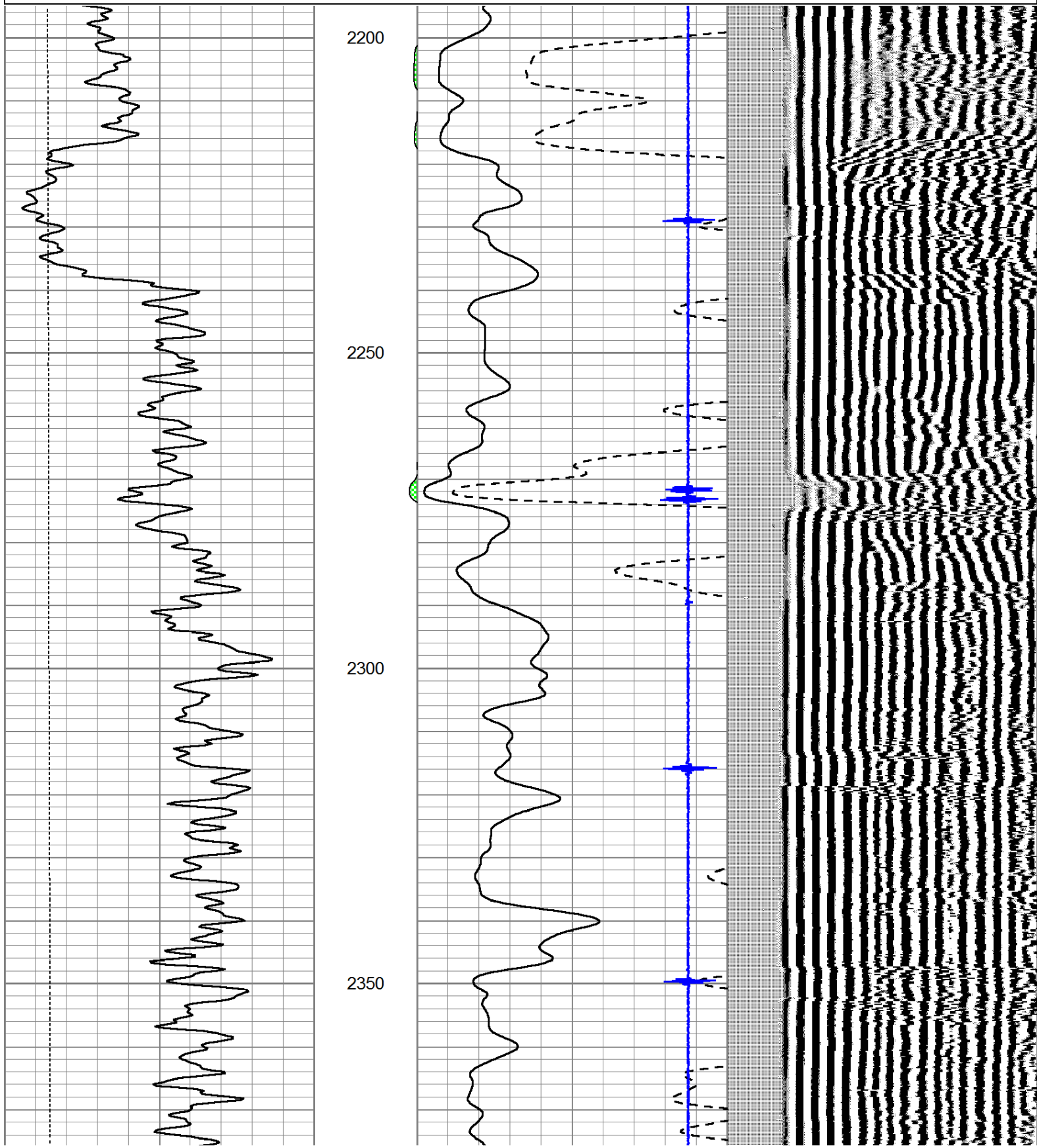
Oakley, KS., South on HWY 83 to Mustang Road, 3 West, 2 South, .25 East
 1 South Into. (Winding Road)

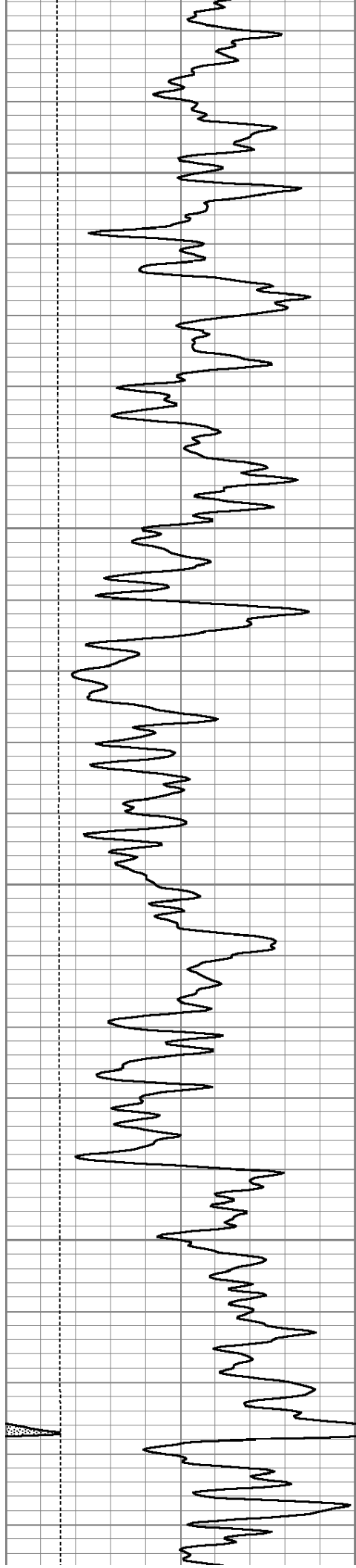


Main Pass

Database File: shake-foster1-17.db
 Dataset Pathname: Foster1-1/grcbl/pass10
 Presentation Format: cldig
 Dataset Creation: Mon Aug 27 13:49:25 2012
 Charted by: Depth in Feet scaled 1:240

0	GR (GAPI)	150	AMP3	0	Amplitude (mV)	100	200	Variable Density	1200
0	LTEN (lb)	5000	(mV)	0	Amplified Amplitude (mV)	20			
			-100 10	7	Collar Locator	-1			



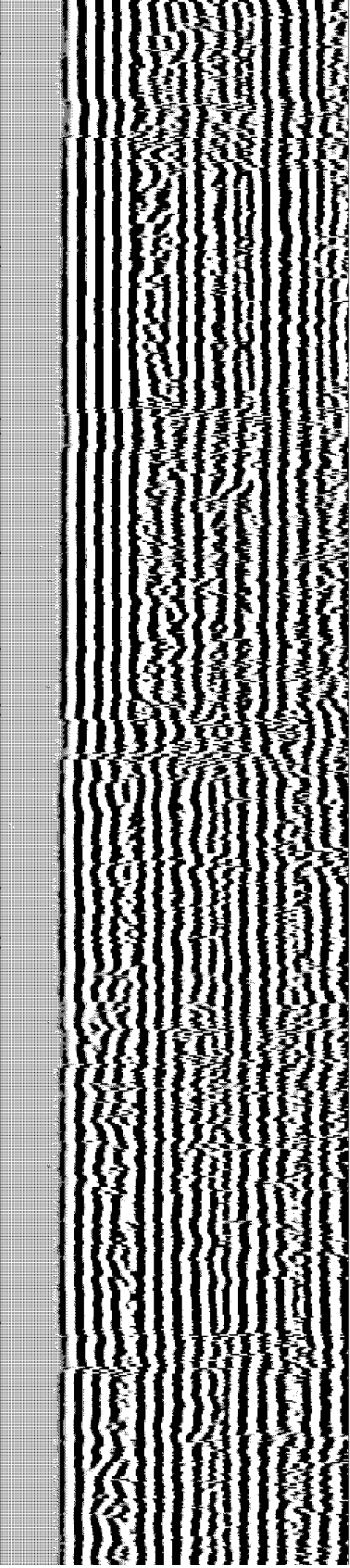
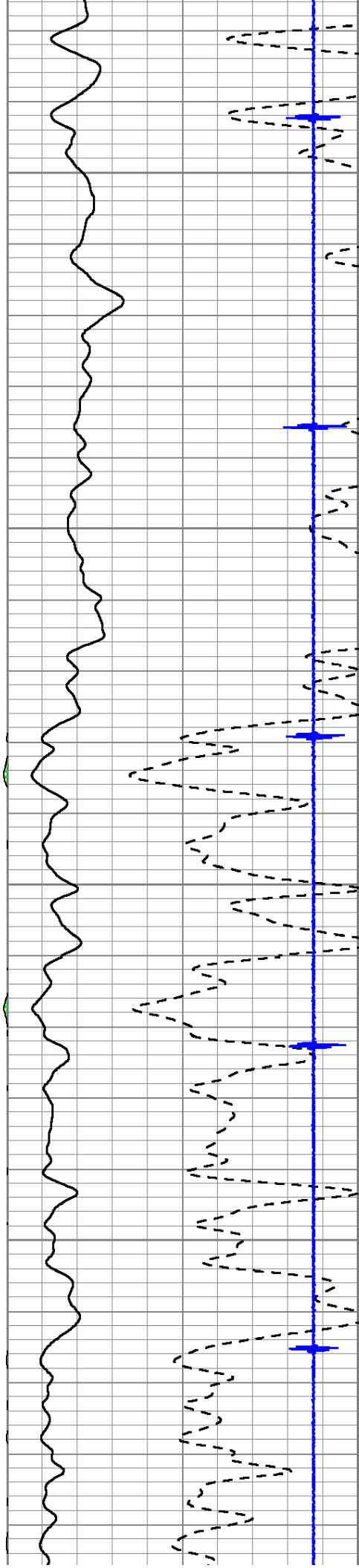


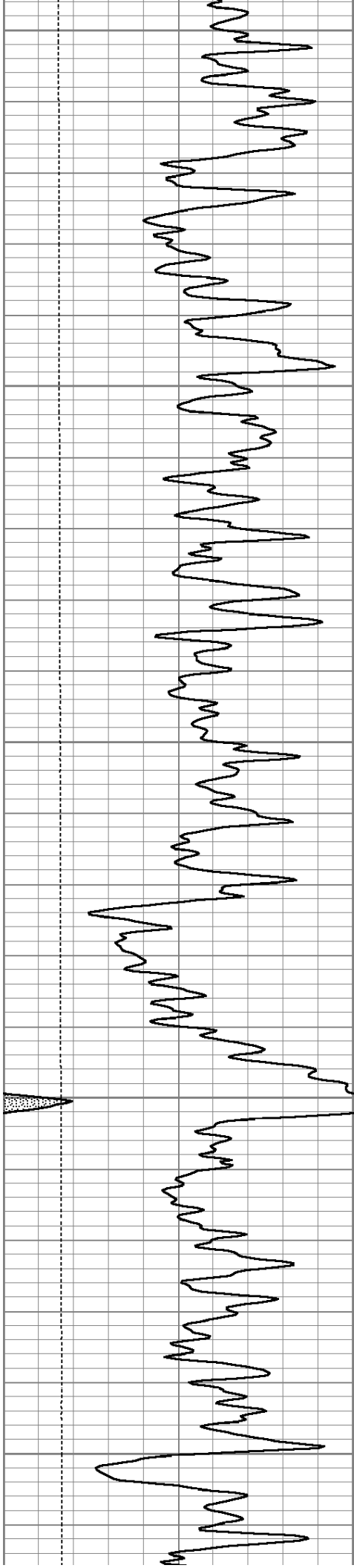
2400

2450

2500

2550





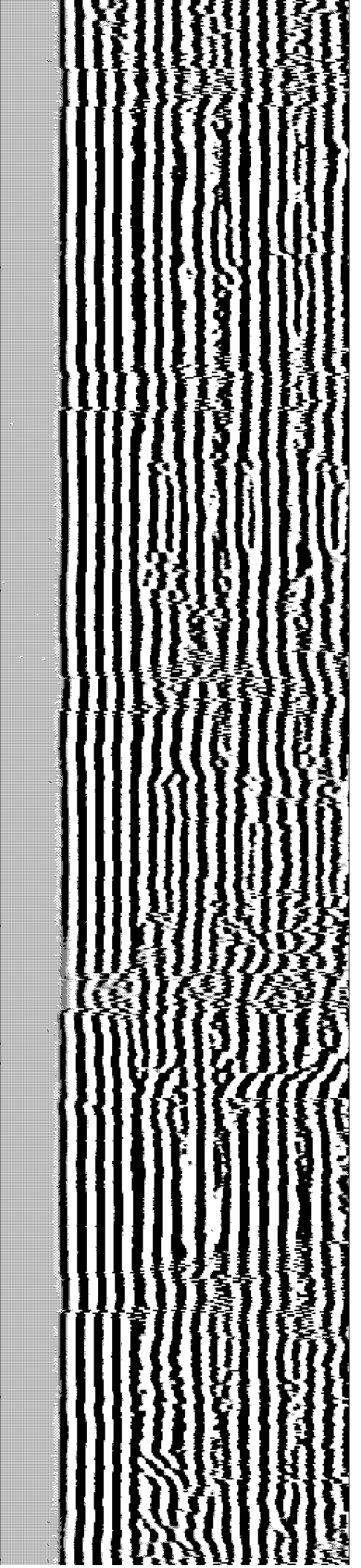
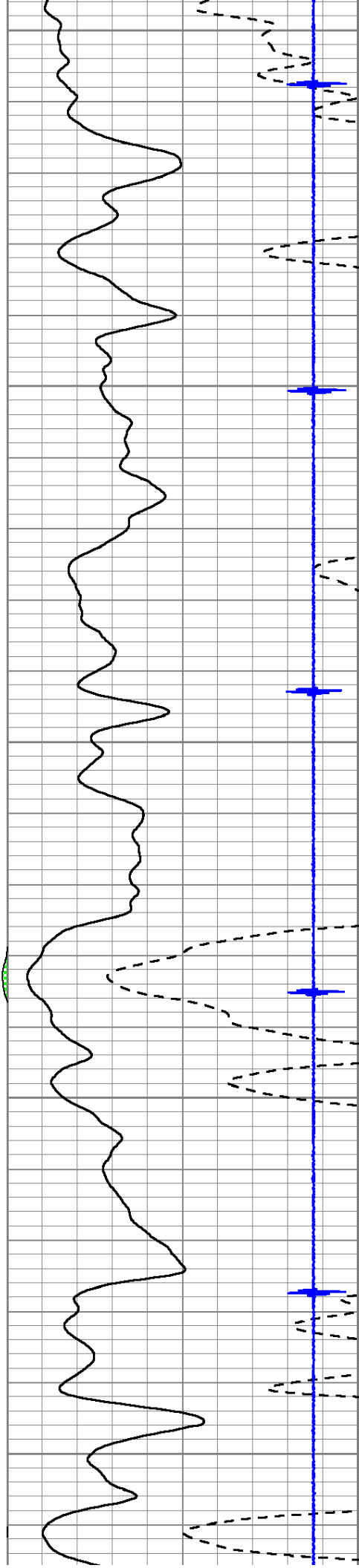
2600

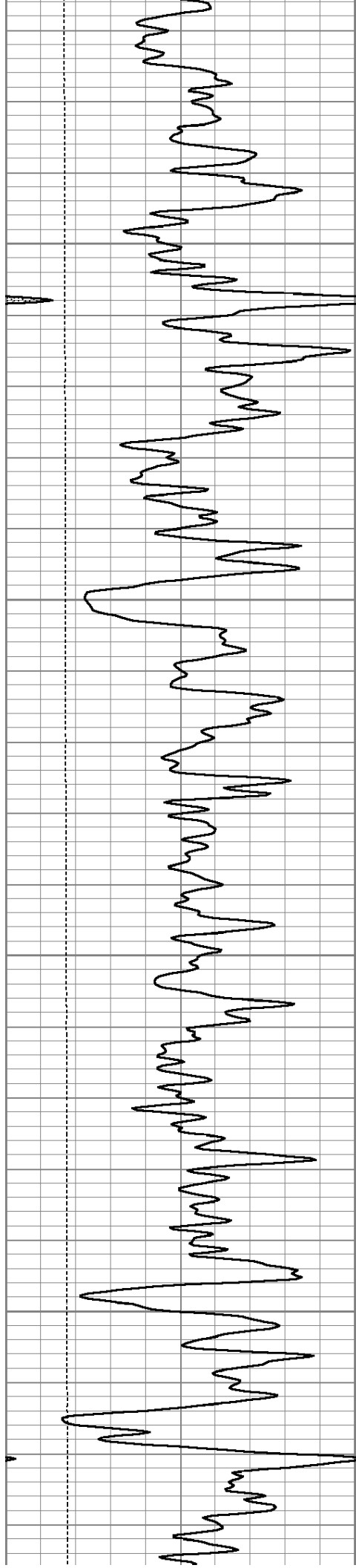
2650

2700

2750

2800



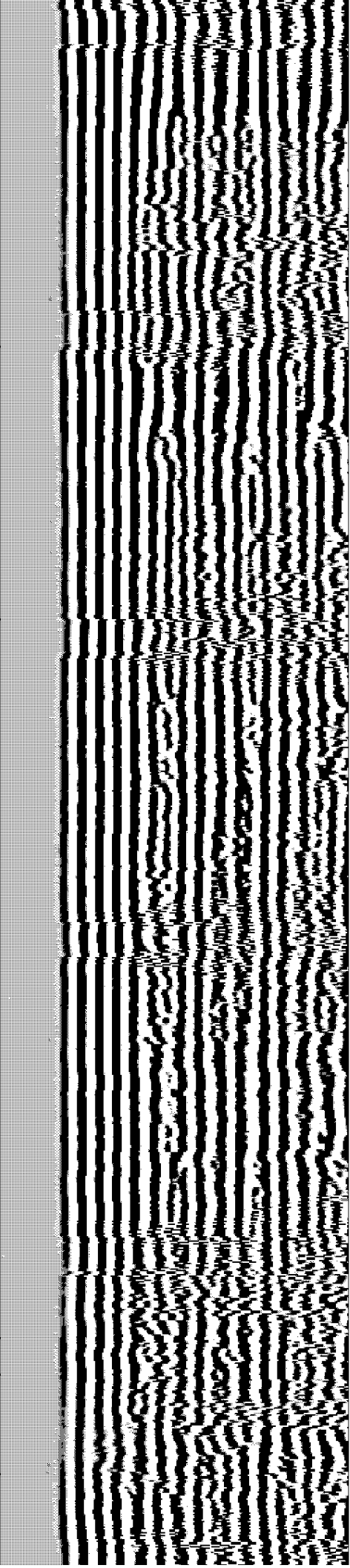
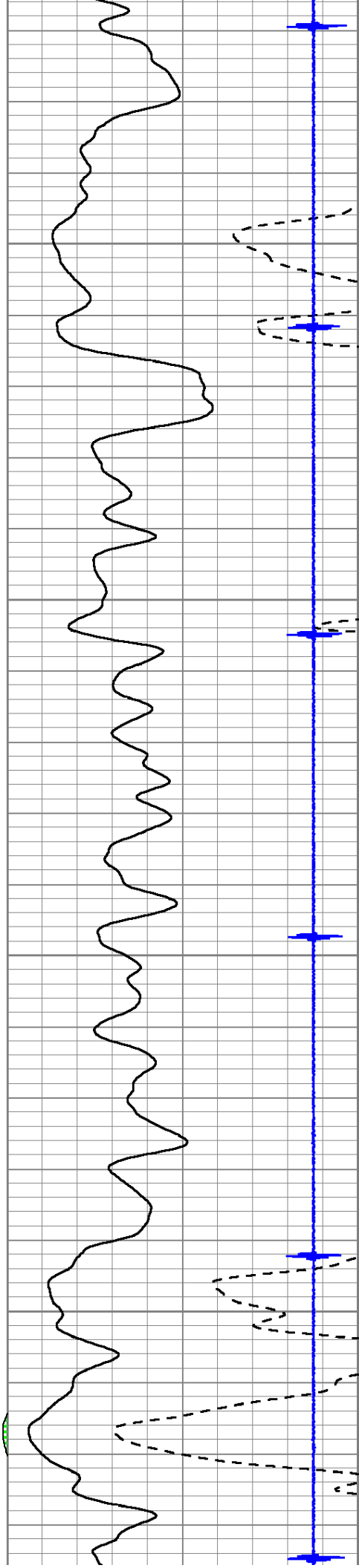


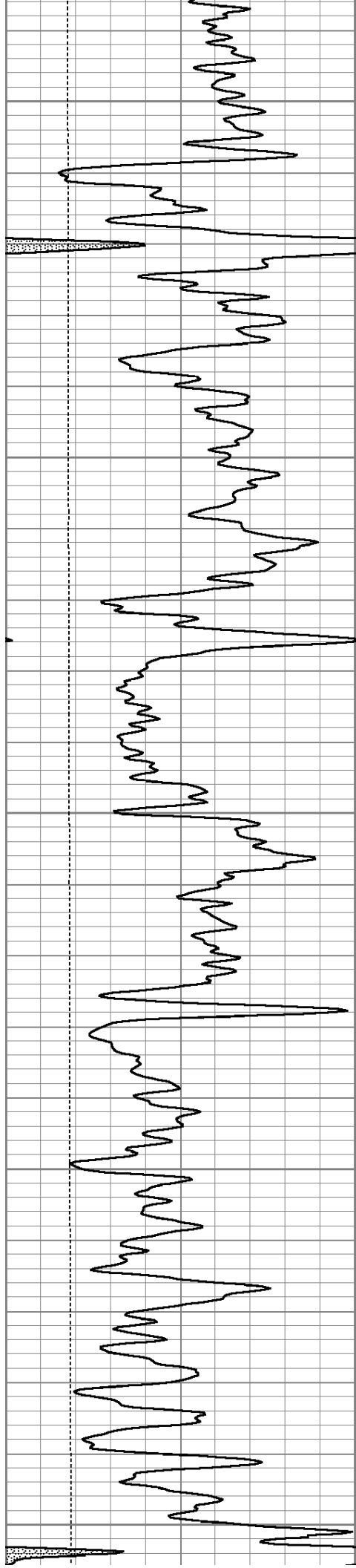
2850

2900

2950

3000





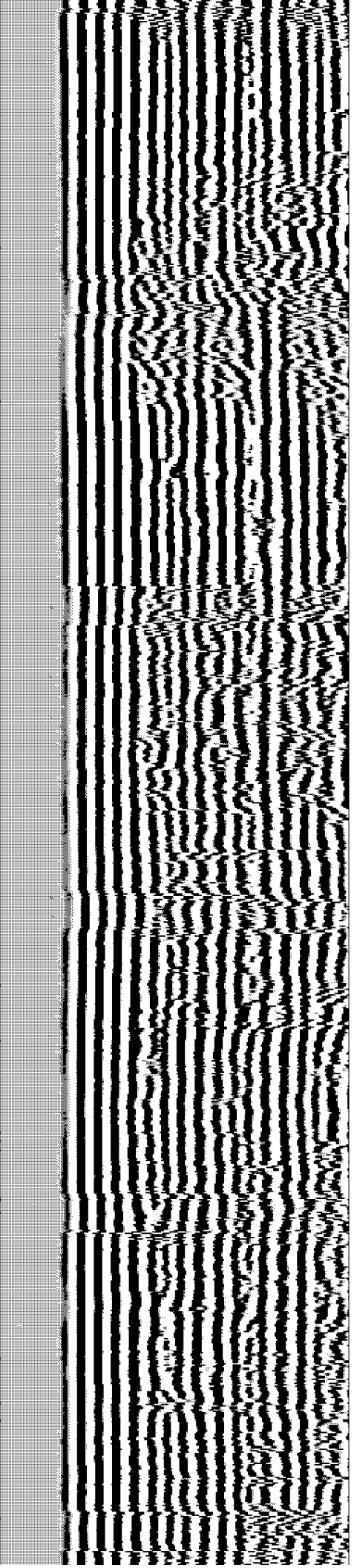
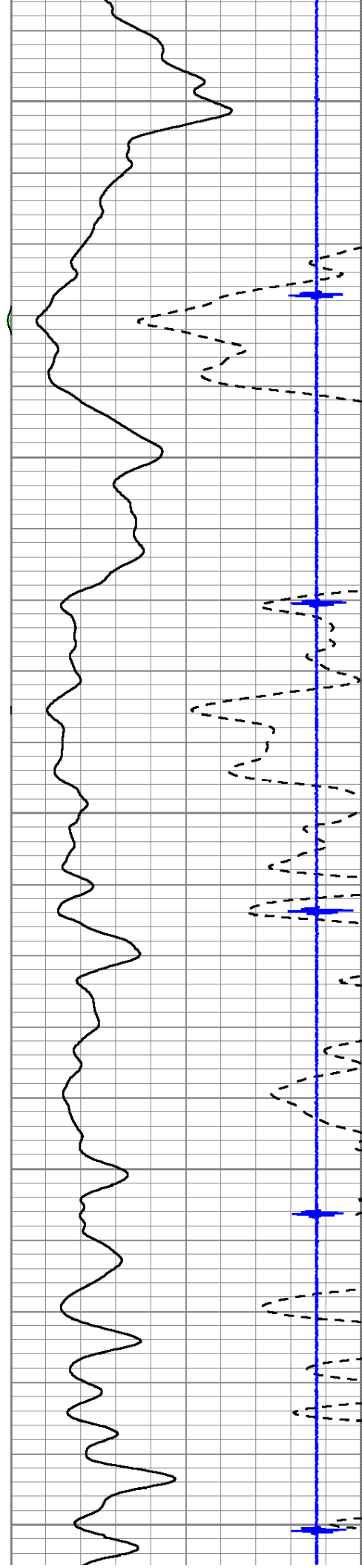
3050

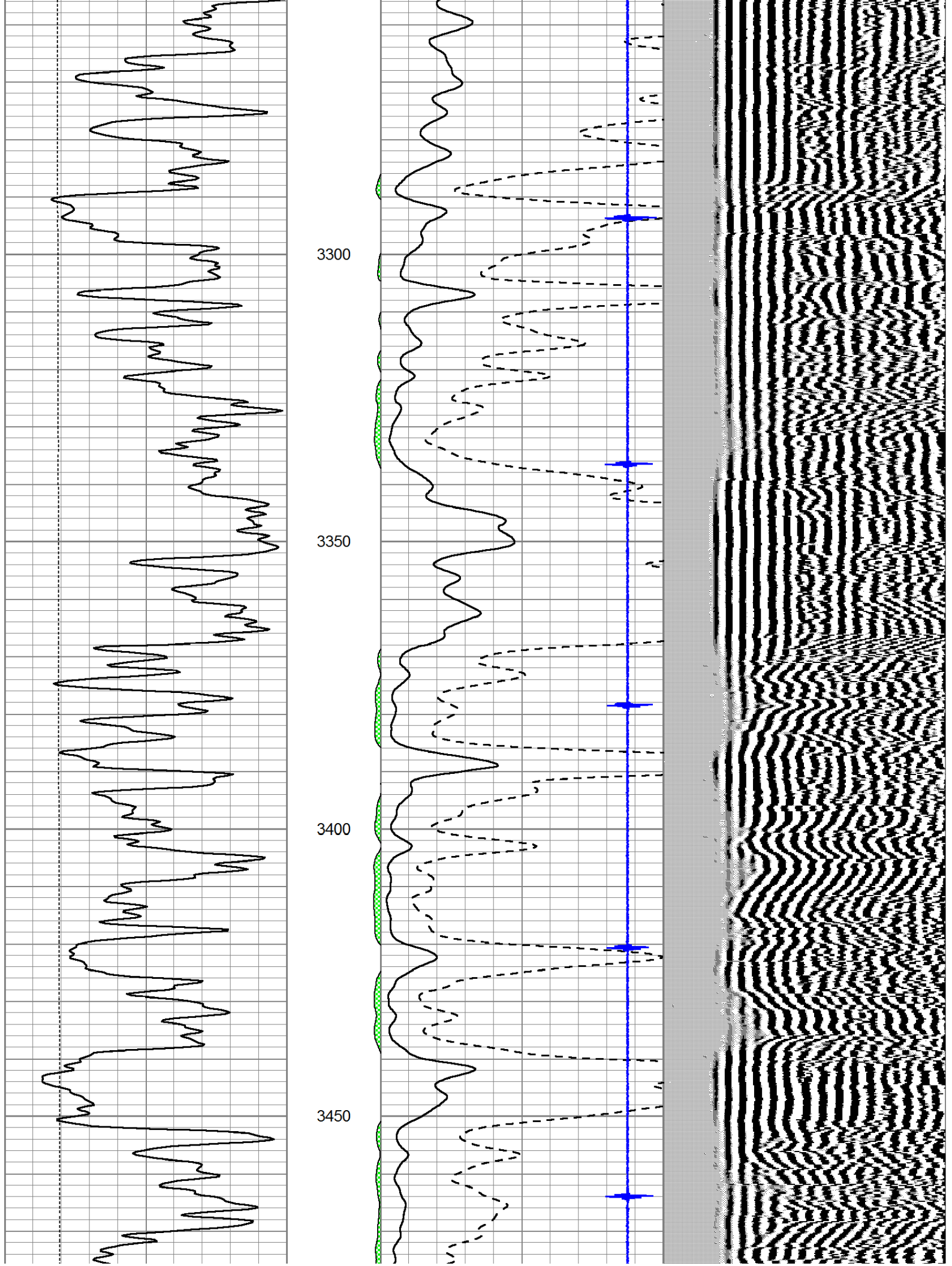
3100

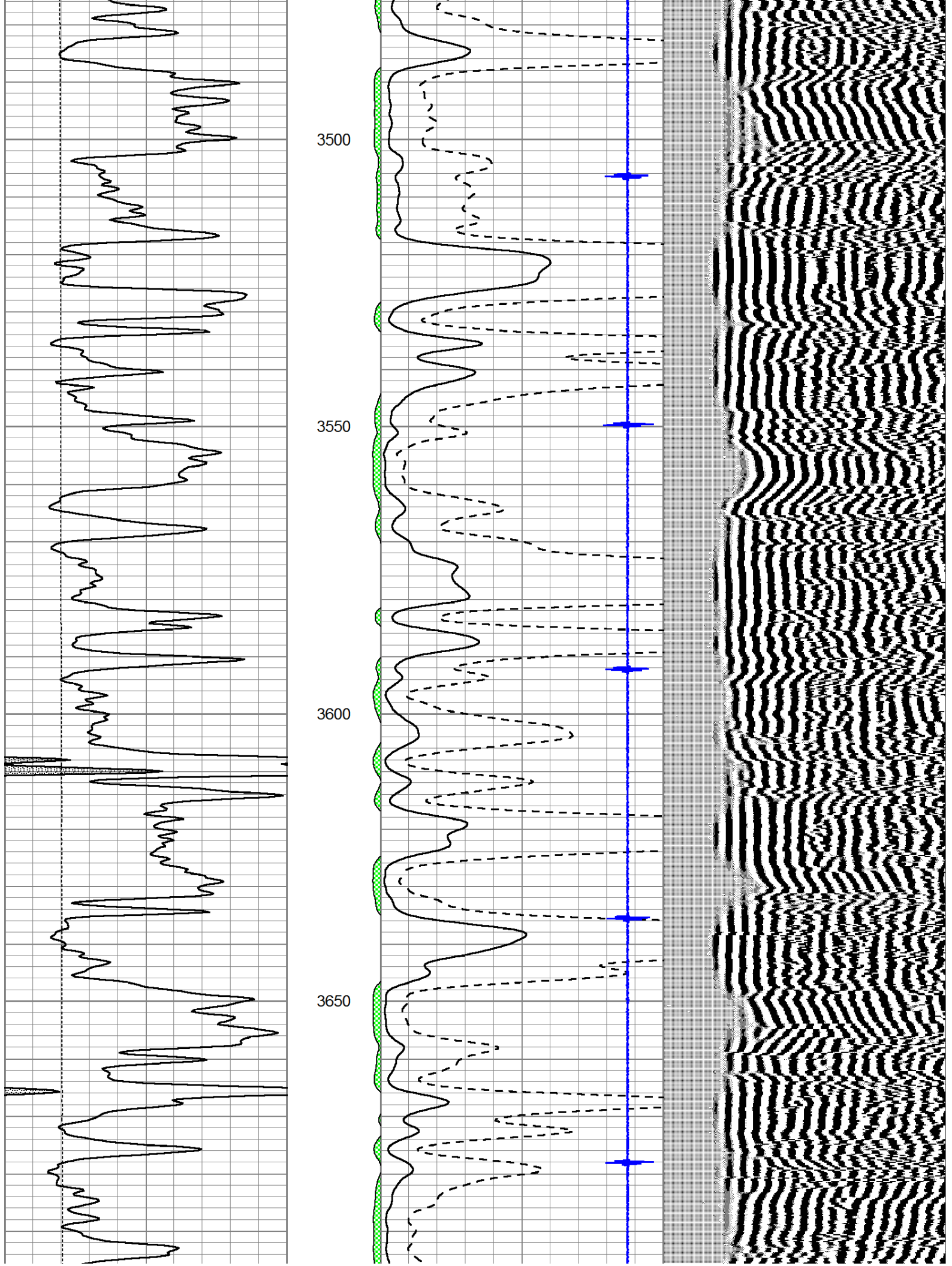
3150

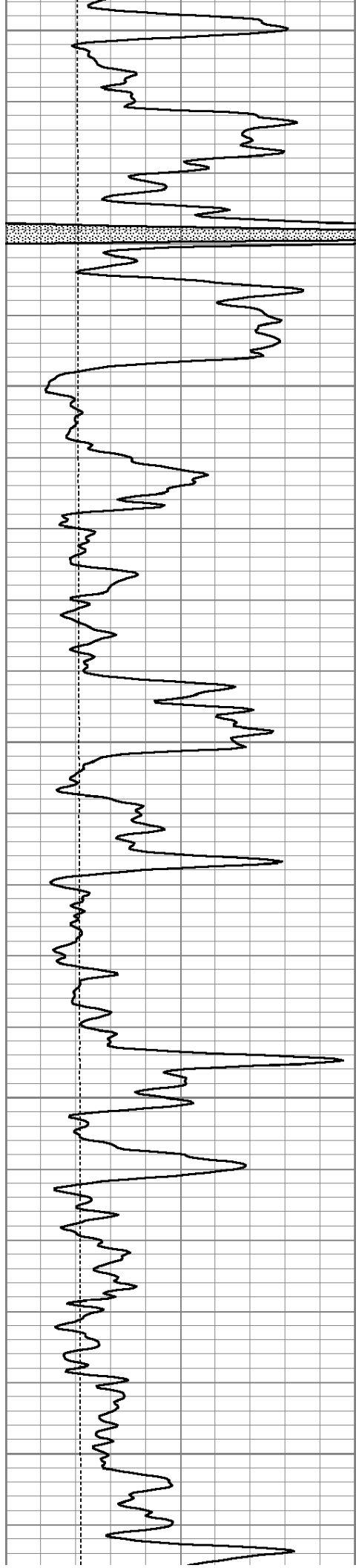
3200

3250









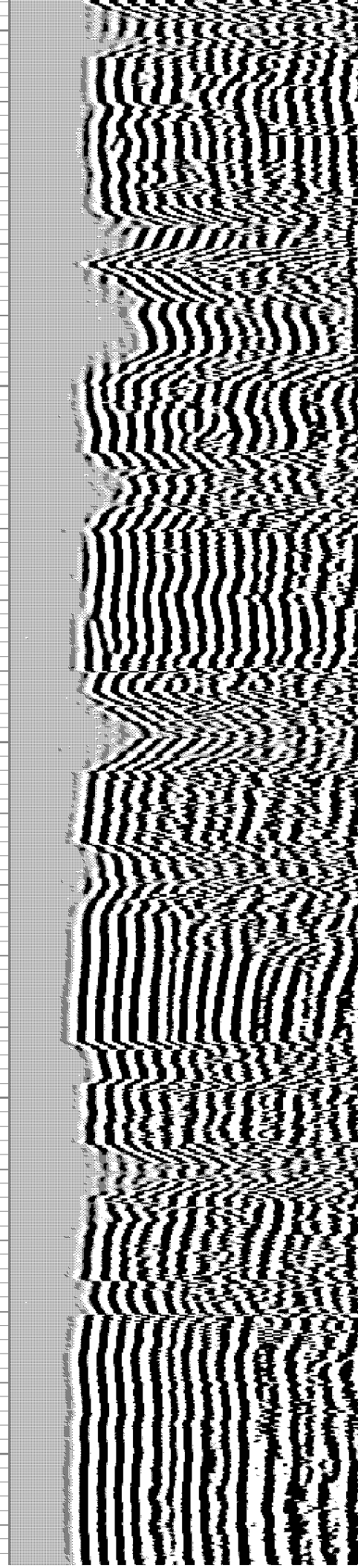
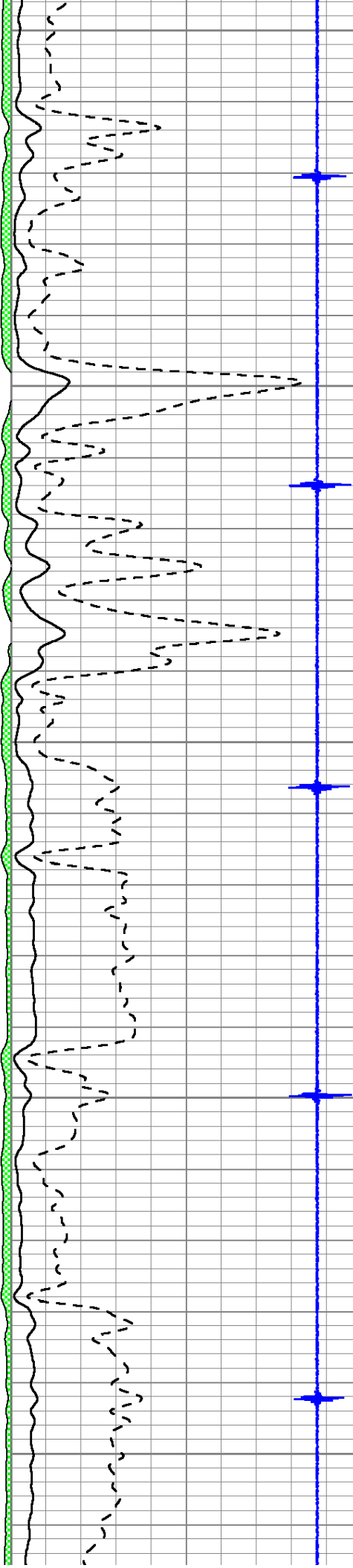
3700

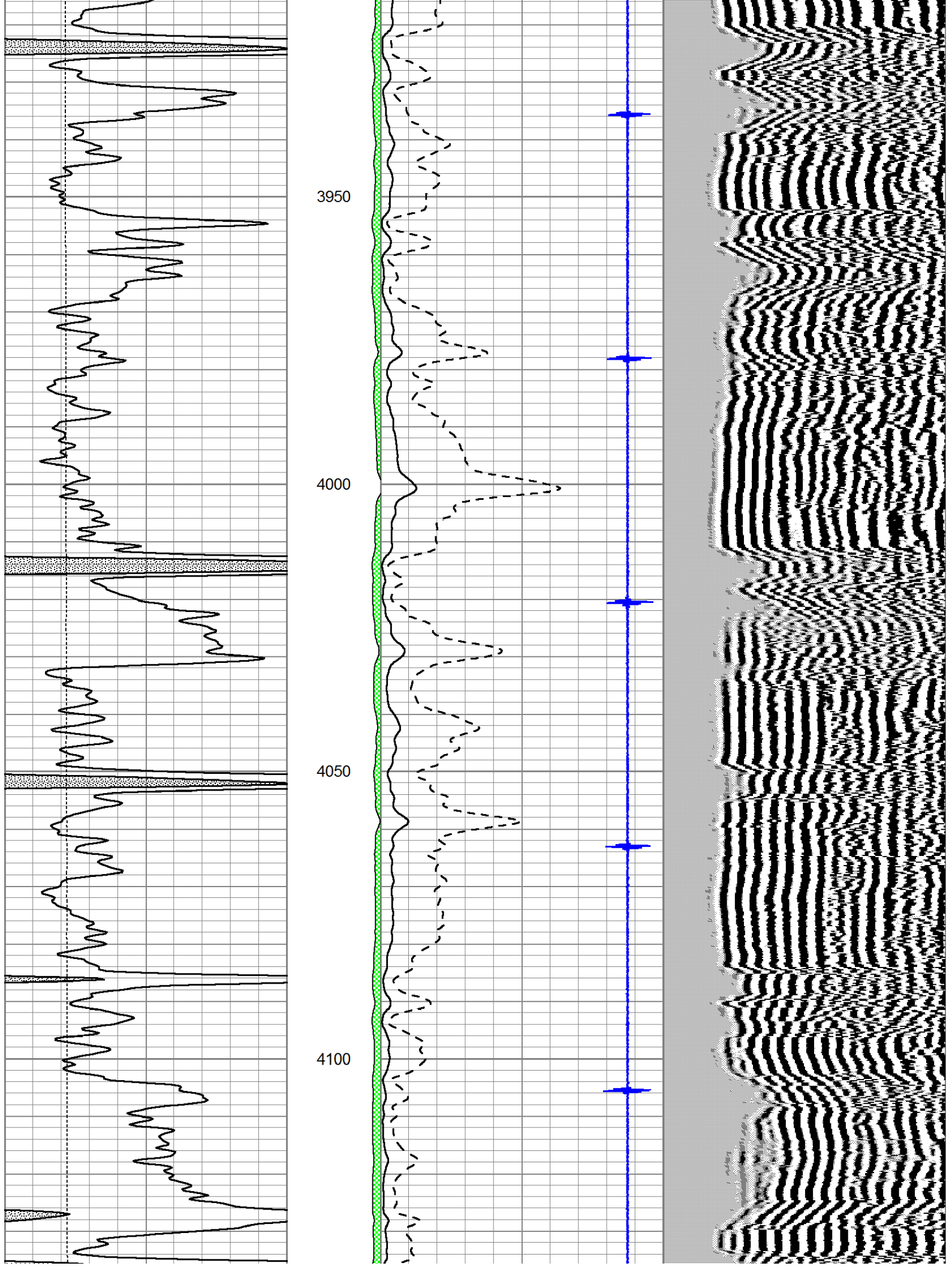
3750

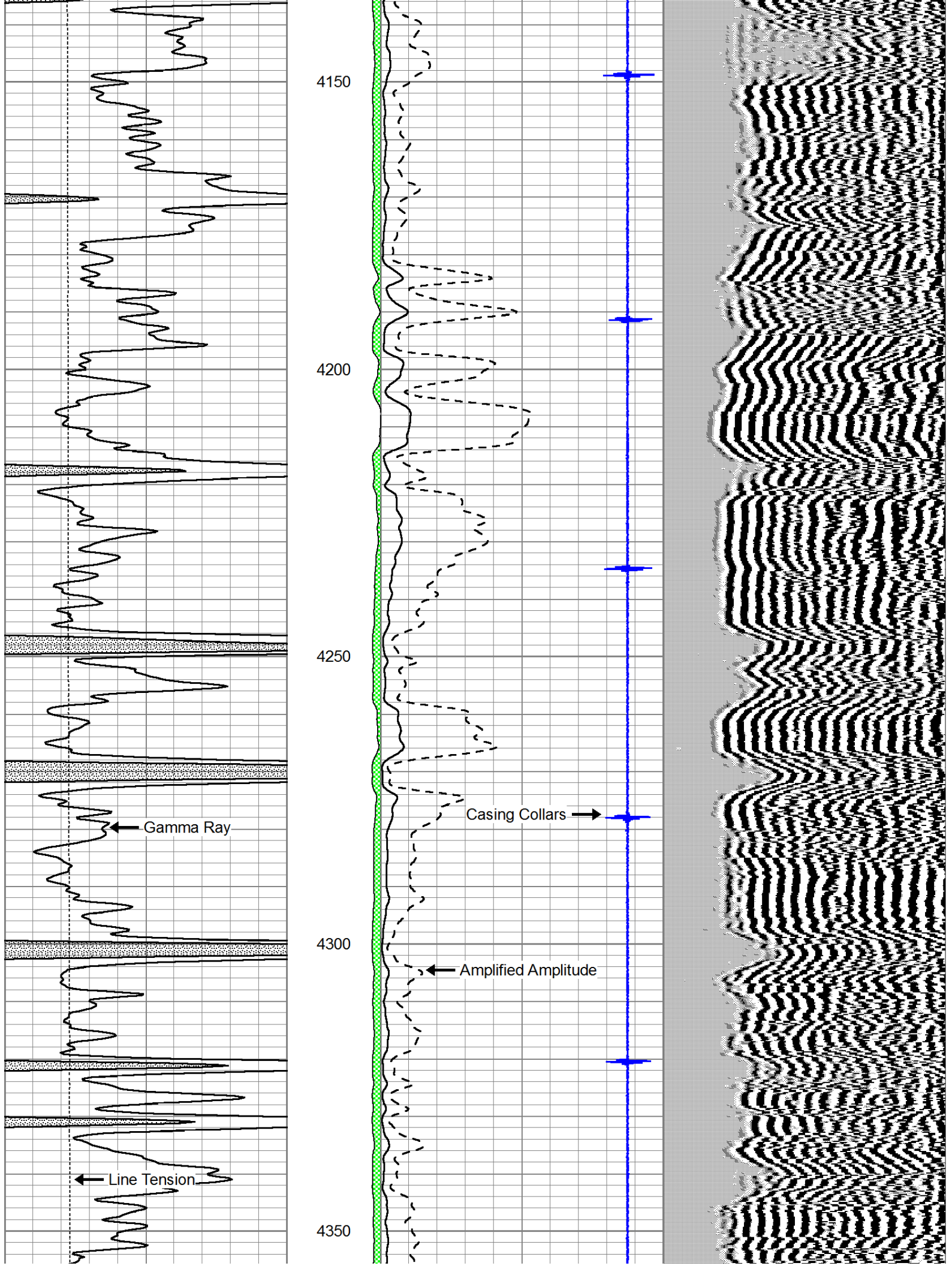
3800

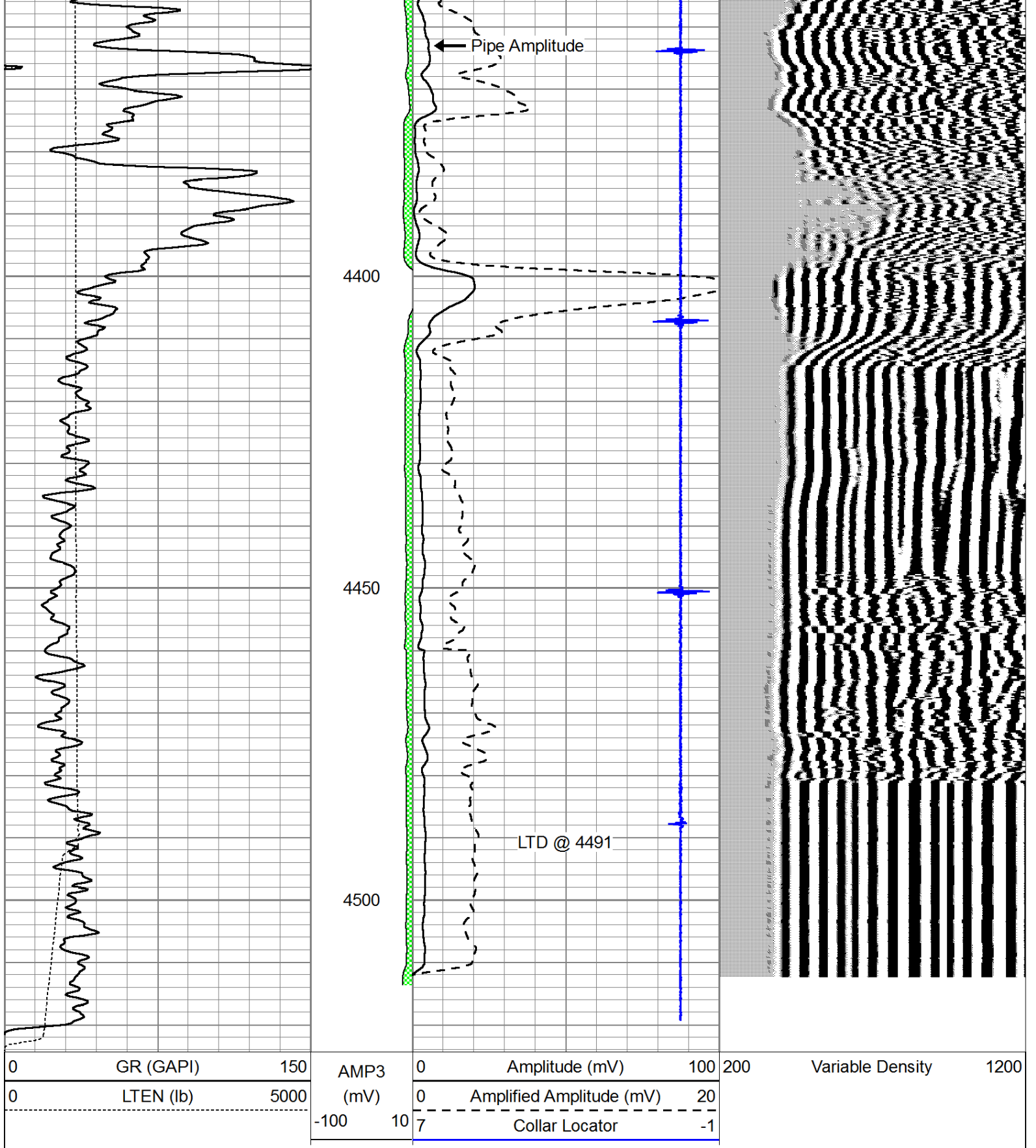
3850

3900









Repeat Section

Database File: shake-foster1-17.db
 Dataset Pathname: Foster1-1/grcbl/pass3.1
 Presentation Format: chldin

0	GR (GAPI)	150	AMP3	0	Amplitude (mV)	100	200	Variable Density	1200
0	LTEN (lb)	5000	(mV)	0	Amplified Amplitude (mV)	20			
			-100 10	7	Collar Locator	-1			

