



**GAMMA RAY  
NEUTRON  
CEMENT BOND LOG  
COMPLETION LOG**

Company **D-ROC OIL COMPANY, LLC**  
Well **WEILERT #2**  
Field **HUMBOLDT-CHANUTE**

County **ALLEN** State **KANSAS**  
Location: **247S FULL & 82S FWL  
S/W SE SW NW**  
AP# : 15-001-30440-00-00

SEC 12 TWP 26S RGE 17E  
Permanent Datum **G.L.** Elevation **937EST**  
Log Measured From **G.L.**  
Drilling Measured From **G.L.** Elevation **937EST**  
Date **7-12-2012** K.R. D.F. 8/7/EST.

Run Number **968**  
Depth Driller **968.6**  
Depth Logger **968.6**

Top Log Interval **SURFACE**  
Bottom Logged Interval **968.6**  
Fluid Level **138**

Type Fluid **WATER**  
Production Ceiling **45' @ 954'**  
Max. Recorded Temp. **@**  
Estimated Cement Top **@**  
Calculated Cement Top **@**

Amount & Type Cement **SURFACE**  
Drilling Comarator **LEIS S**  
Equipment Number **107**

Location **LEIS V**  
Recorded By **LEIS V**  
Witnessed By

<<< Fold Here >>>

All interpretations are opinions based on inferences from electrical or other measurements and we cannot and do not guarantee the accuracy or correctness of any interpretation, and we shall not, except in the case of gross or willful negligence on our part, be liable or responsible for any loss, costs, damages, or expenses incurred or sustained by anyone resulting from any interpretation made by any of our officers, agents or employees. These interpretations are also subject to our general terms and conditions set out in our current Price Schedule.

**Comments**

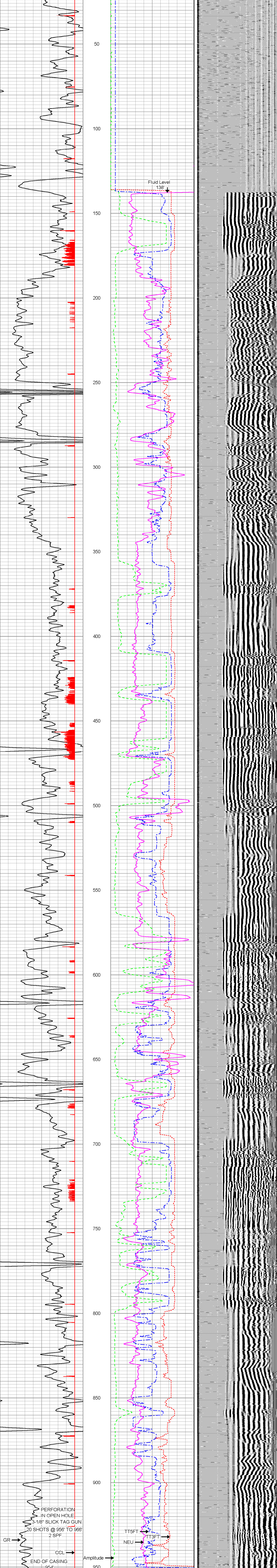
THANK YOU

| Sensor  | Offset (ft) | Schematic | Description   | Len (ft) | OD (in) | Wt (lb) |
|---------|-------------|-----------|---|----------|---------|---------|
|         |             |           | tekco tekco cent.   | 2.17     | 1.69    | 5.00    |
| WVF3FT  | 17.50       |           | CBLTEKCO-TEKCO2RCVR (TEKCO169)<br>1 11/16" TEKCO 2 RCVR DELWARE | 9.75     | 1.69    | 50.00   |
| WVF5FT  | 16.50       |           |   |          |         |         |
| WVFCAL  | 13.08       |           | tekco tekco cent.   | 2.17     | 1.69    | 5.00    |
| WVFSYNC | 13.08       |           |   |          |         |         |
| GR      | 7.59        |           | GR-TITAN_169 (TIT169_001)<br>Titan 1 11/16" Gamma Ray           | 4.75     | 1.69    | 20.00   |
| CCL     | 5.05        |           | CCL-TITAN_169 (TIT169)<br>Titan 1 11/16" Logging CCL            | 1.83     | 1.69    | 7.50    |
| NEU     | 0.63        |           | NEU-TITAN_169 (TIT169_001)<br>Titan 1 11/16" Neutron            | 4.33     | 1.69    | 20.00   |

Dataset: weilert #2.db: field/well/run1/pass1  
Total Length: 25.00 ft  
Total Weight: 107.50 lb  
O.D. 1.69 in

Database File: h\weilert #2.db  
Dataset Pathname: pass1  
Presentation Format: scbl\_cr  
Dataset Creation: Thu Jul 12 14:08:09 2012 by Log Std Casedhole 07122  
Charted by: Depth in Feet scaled 1:240

|   |           |     |      |                |     |     |     |      |
|---|-----------|-----|------|----------------|-----|-----|-----|------|
| 0 | Gamma Ray | 150 | 0    | Amplitude (mV) | 150 | 200 | VDL | 1200 |
| 9 | CCL       | -1  | 1200 | TT3FT (usec)   | 200 |     |     |      |
|   |           |     | 1500 | TT5FT (usec)   | 200 |     |     |      |
|   |           |     | 50   | NEU            | 900 |     |     |      |



|   |           |     |      |                |     |     |     |      |
|---|-----------|-----|------|----------------|-----|-----|-----|------|
| 0 | Gamma Ray | 150 | 0    | Amplitude (mV) | 150 | 200 | VDL | 1200 |
| 9 | CCL       | -1  | 1200 | TT3FT (usec)   | 200 |     |     |      |
|   |           |     | 1500 | TT5FT (usec)   | 200 |     |     |      |
|   |           |     | 50   | NEU            | 900 |     |     |      |

Company **D-ROC OIL COMPANY, LLC**  
Well **WEILERT #2**  
Field **HUMBOLDT-CHANUTE**  
County **ALLEN** SEC. 12 TWP. 26S RGE 17E  
State **KANSAS** Date **7-12-2012**