

**SUPERIOR  
Hays,  
Kansas**

**COMPENSATED  
DENSITY / NEUTRON  
LOG**

Company NORSTAR PETROLEUM, INC.  
Well BARRETT FAMILY TRUST #1-35  
Field  
County THOMAS State KANSAS

Company NORSTAR PETROLEUM, INC.  
Well BARRETT FAMILY TRUST #1-35  
Field  
County THOMAS  
State KANSAS

Location: API #: 15-193-20858  
335' FSL & 2058' FEL  
SEC 35 TWP 9S RGE 35W  
Permanent Datum GROUND LEVEL Elevation 3328  
Log Measured From KELLY BUSHING 5' A.G.L.  
Drilling Measured From KELLY BUSHING  
Other Services  
DIL  
SONIC/MEL  
Elevation  
K.B. 3333  
D.F.  
G.L. 3328

Date	8-7-12
Run Number	TW0
Depth Driller	4978
Depth Logger	4978
Bottom Logged Interval	4975
Top Log Interval	3700
Casing Driller	290
Casing Logger	290
Bit Size	7.875
Type Fluid in Hole	CHEMICAL MUD
Density / Viscosity	9.5 / 50
pH / Fluid Loss	10.0 / 12.0
Source of Sample	FLOWLINE
Rm @ Meas. Temp	0.48 @ 82F
Rmf @ Meas. Temp	0.36 @ 82F
Rmc @ Meas. Temp	0.58 @ 82F
Source of Rmf / Rmc	MEASURED
Rm @ BHT	.320 @ 124F
Time Circulation Stopped	3 HOURS
Time Logger on Bottom	5:15 A.M.
Maximum Recorded Temperature	124F
Equipment Number	860
Location	HAYS, KS.
Recorded By	RUPP
Witnessed By	BOB ELDER

<<< Fold Here >>>

All interpretations are opinions based on inferences from electrical or other measurements and we cannot and do not guarantee the accuracy or correctness of any interpretation, and we shall not, except in the case of gross or willful negligence on our part, be liable or responsible for any loss, costs, damages, or expenses incurred or sustained by anyone resulting from any interpretation made by any of our officers, agents or employees. These interpretations are also subject to our general terms and conditions set out in our current Price Schedule.

Comments

SUPERIOR WELL SERVICES  
785-628-6395  
THANK YOU FOR YOUR BUSINESS  
DIRECTIONS: LEVANT & I-70 EXIT, 10S TO RD. "G", 1/2E, N & E INTO.

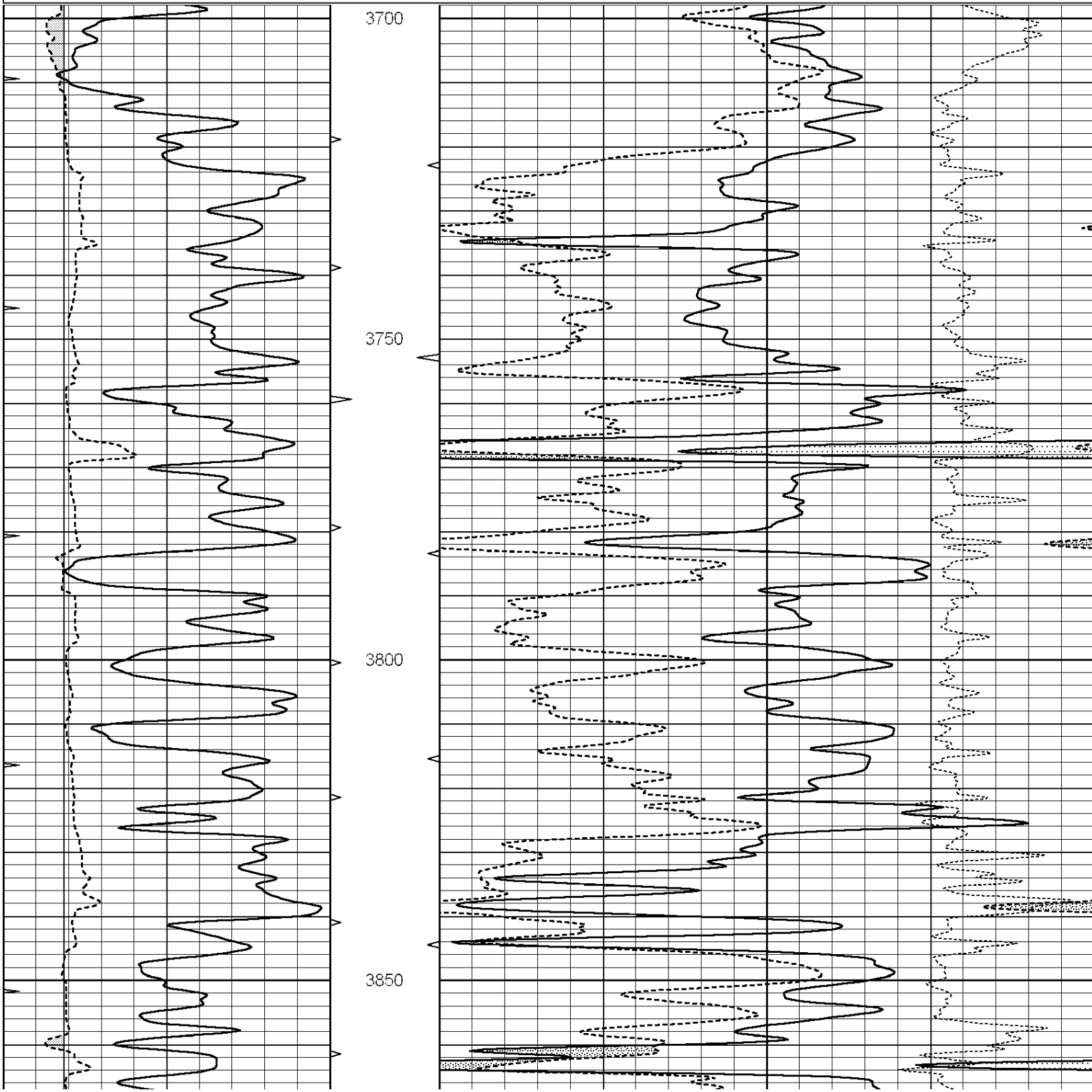


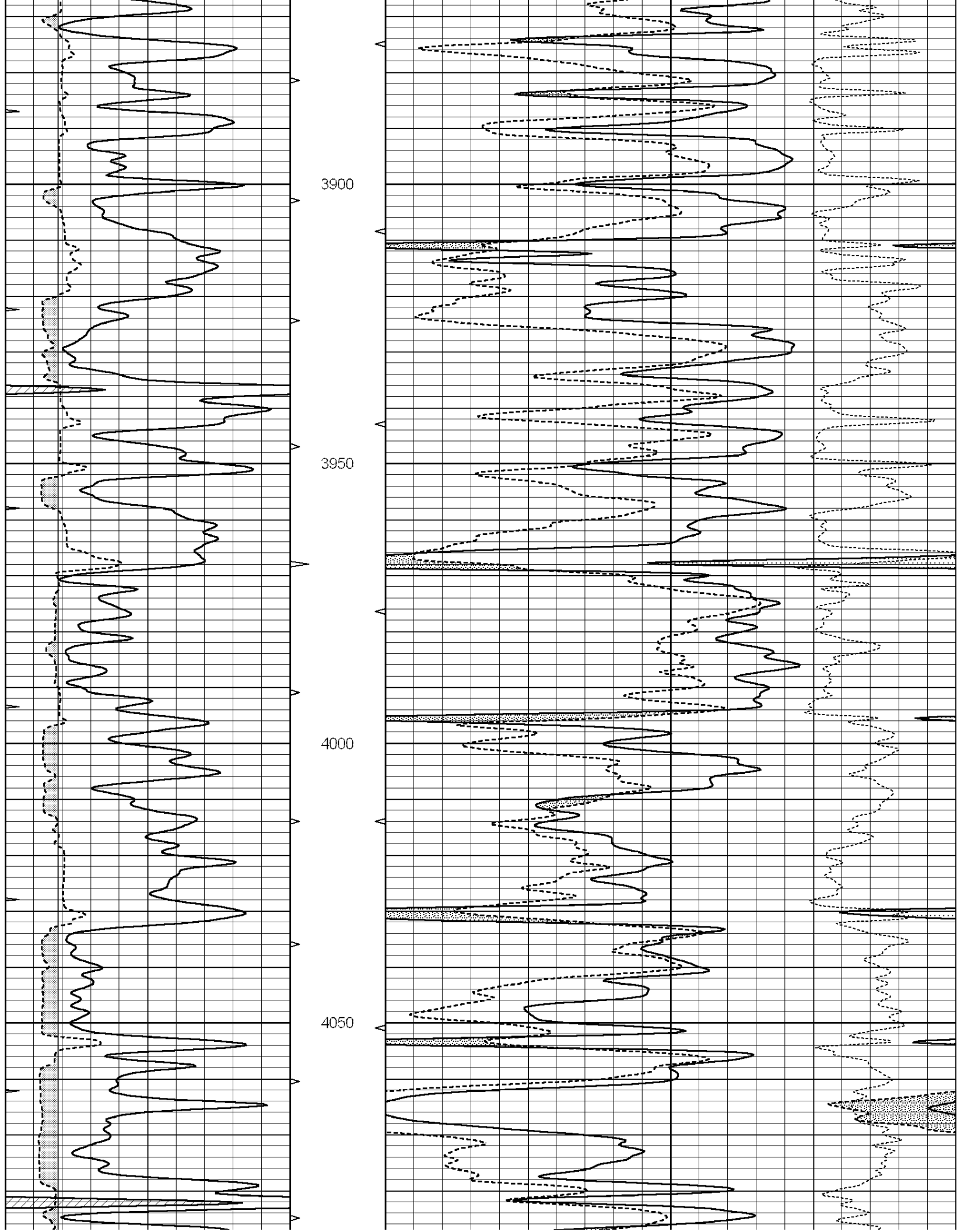
**SUPERIOR  
Hays,  
Kansas**

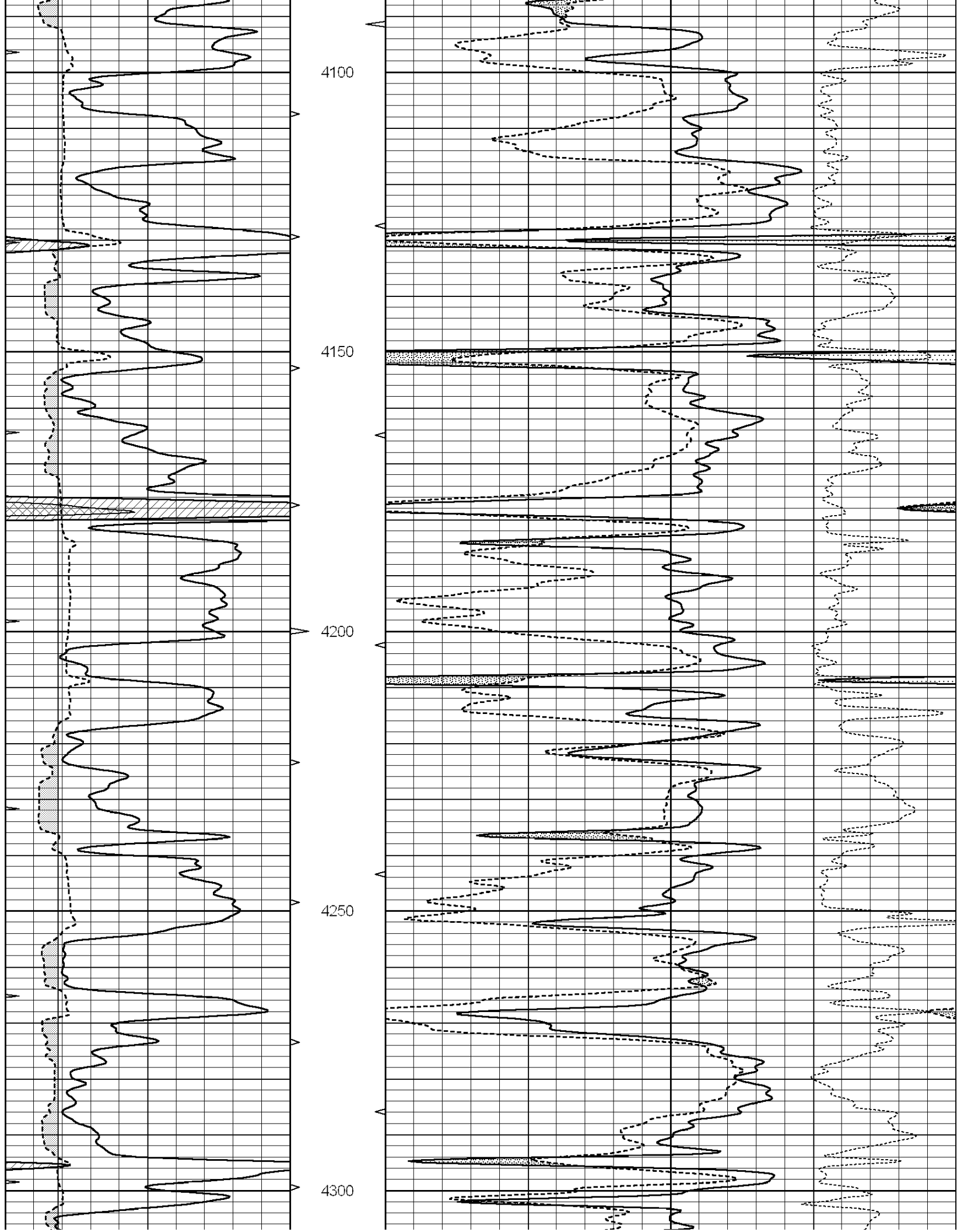
**MAIN SECTION**

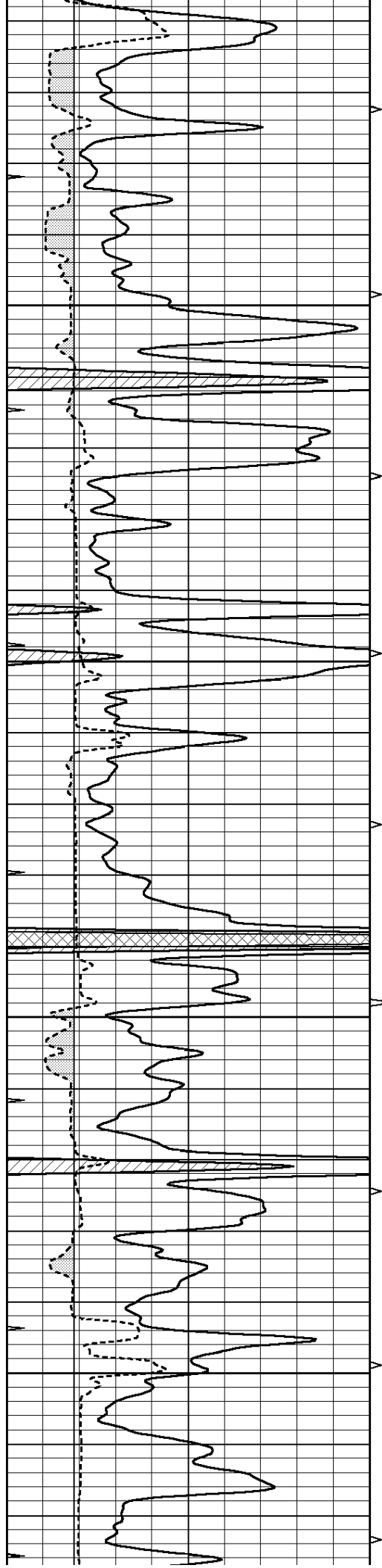
Database File: 009569ddn.db  
 Dataset Pathname: pass5.3  
 Presentation Format: den\_neu  
 Dataset Creation: Tue Aug 07 11:52:37 2012  
 Charted by: Depth in Feet scaled 1:240

0	GAMMA RAY (GAPI)	150	ABHV	30	COMPENSATED DENSITY (pu)	-10	
6	CALIPER (in)	16	10 (ft3)	0	30	COMPENSATED NEUTRON (pu)	-10
0	MINMK	20	TBHV		-0.25	CORRECTION (g/cc)	0.25
6	MELCAL (in)	16	0 (ft3)	10			







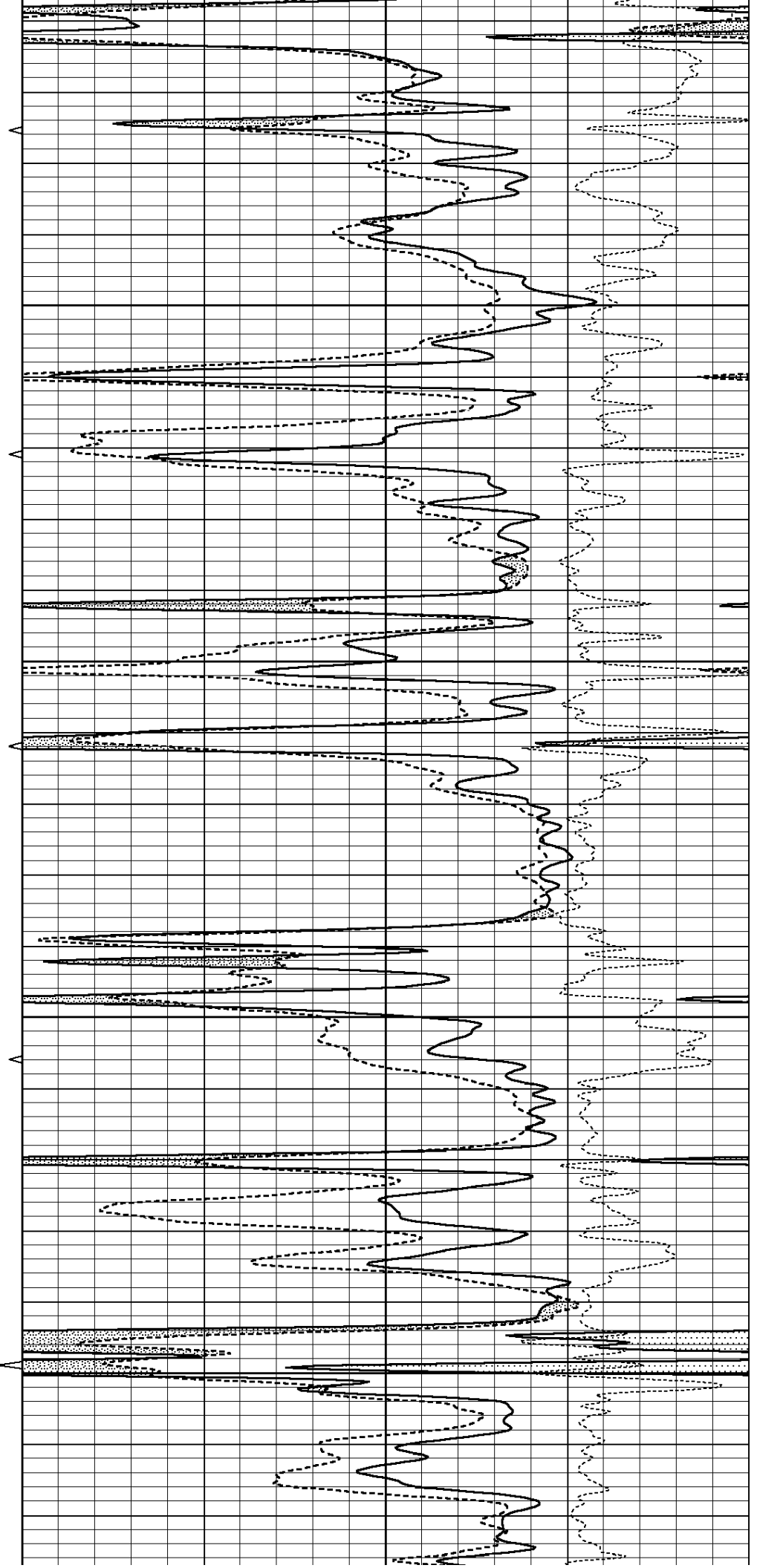


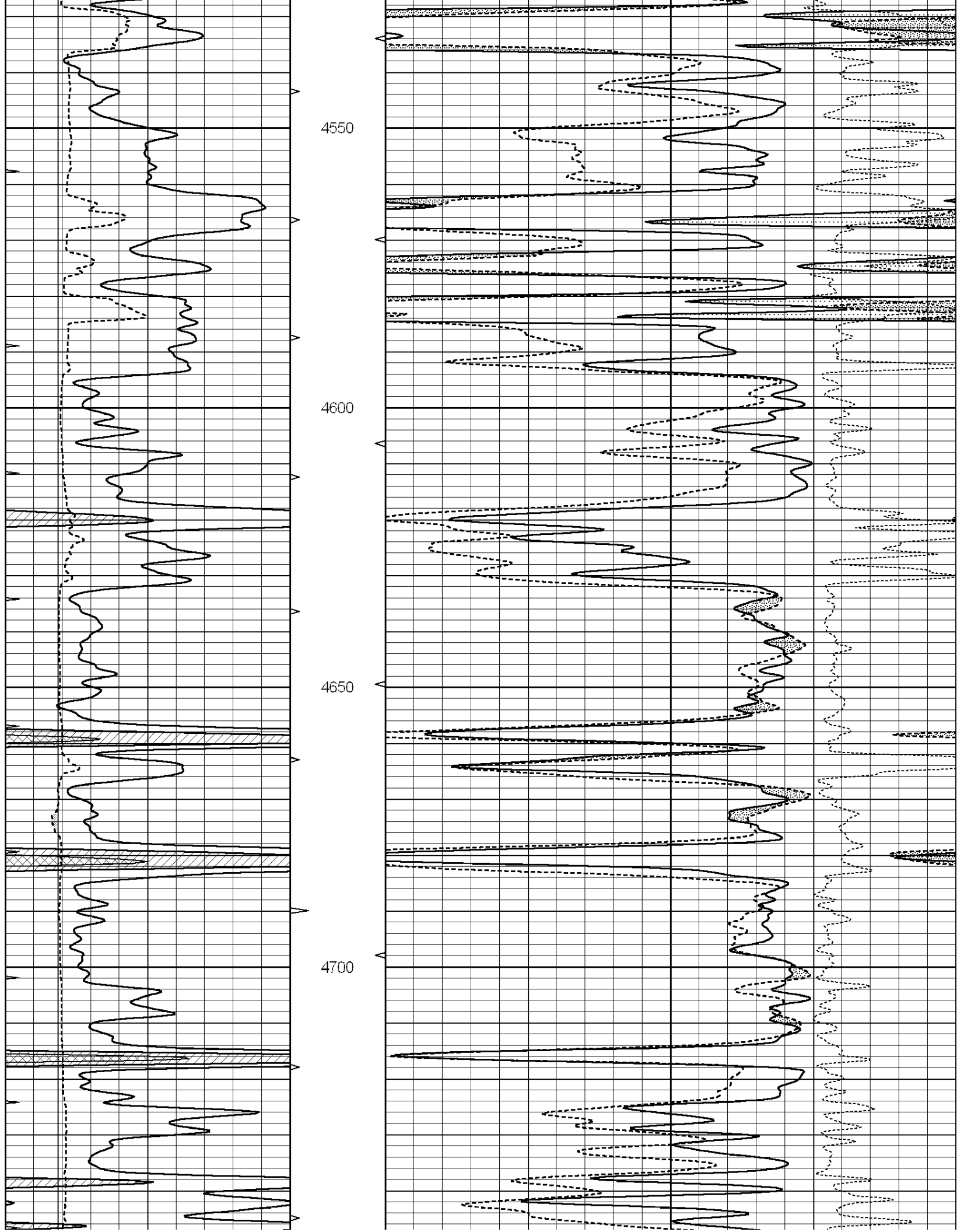
4350

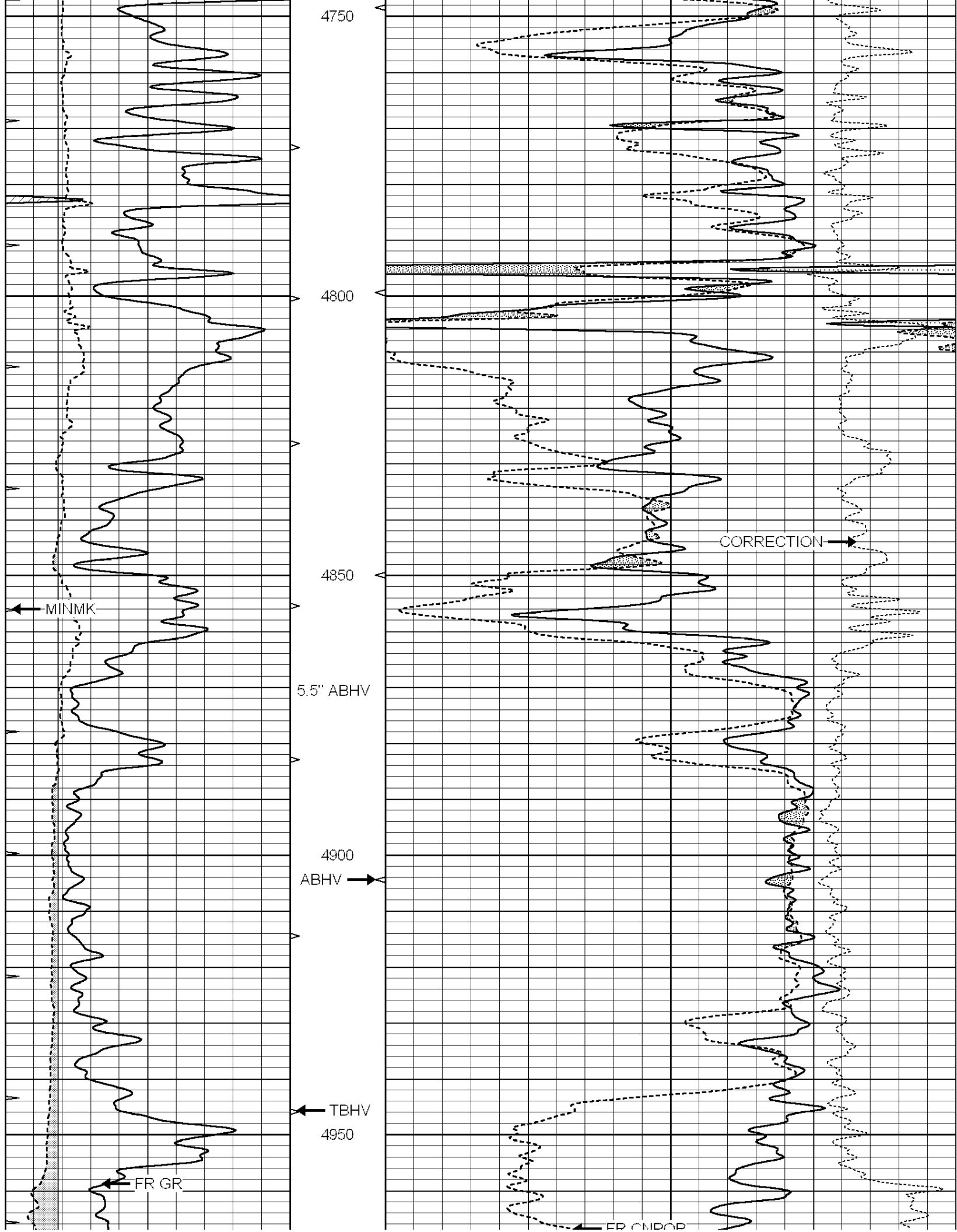
4400

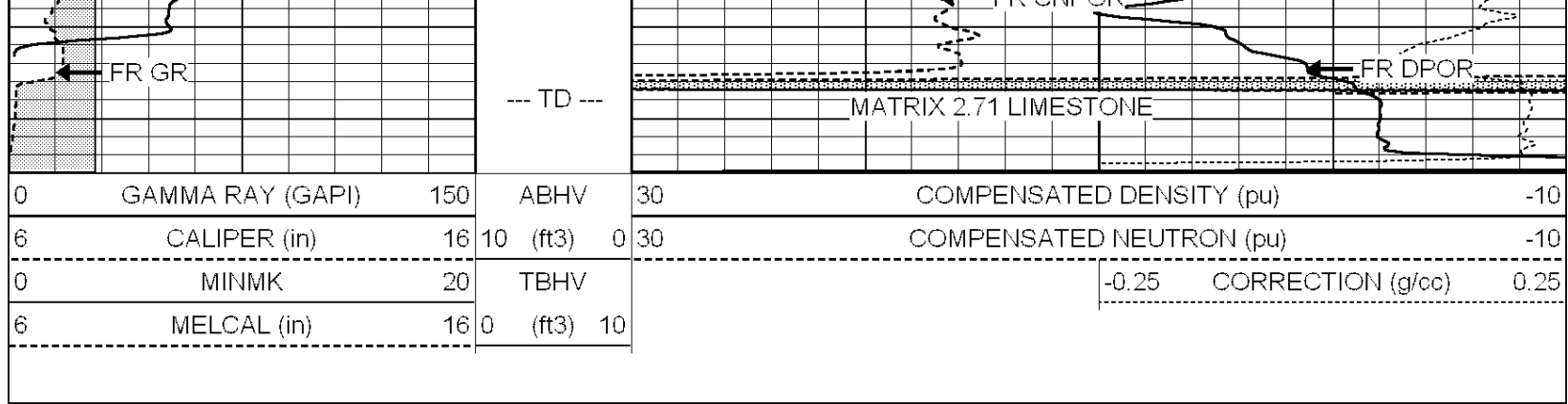
4450

4500







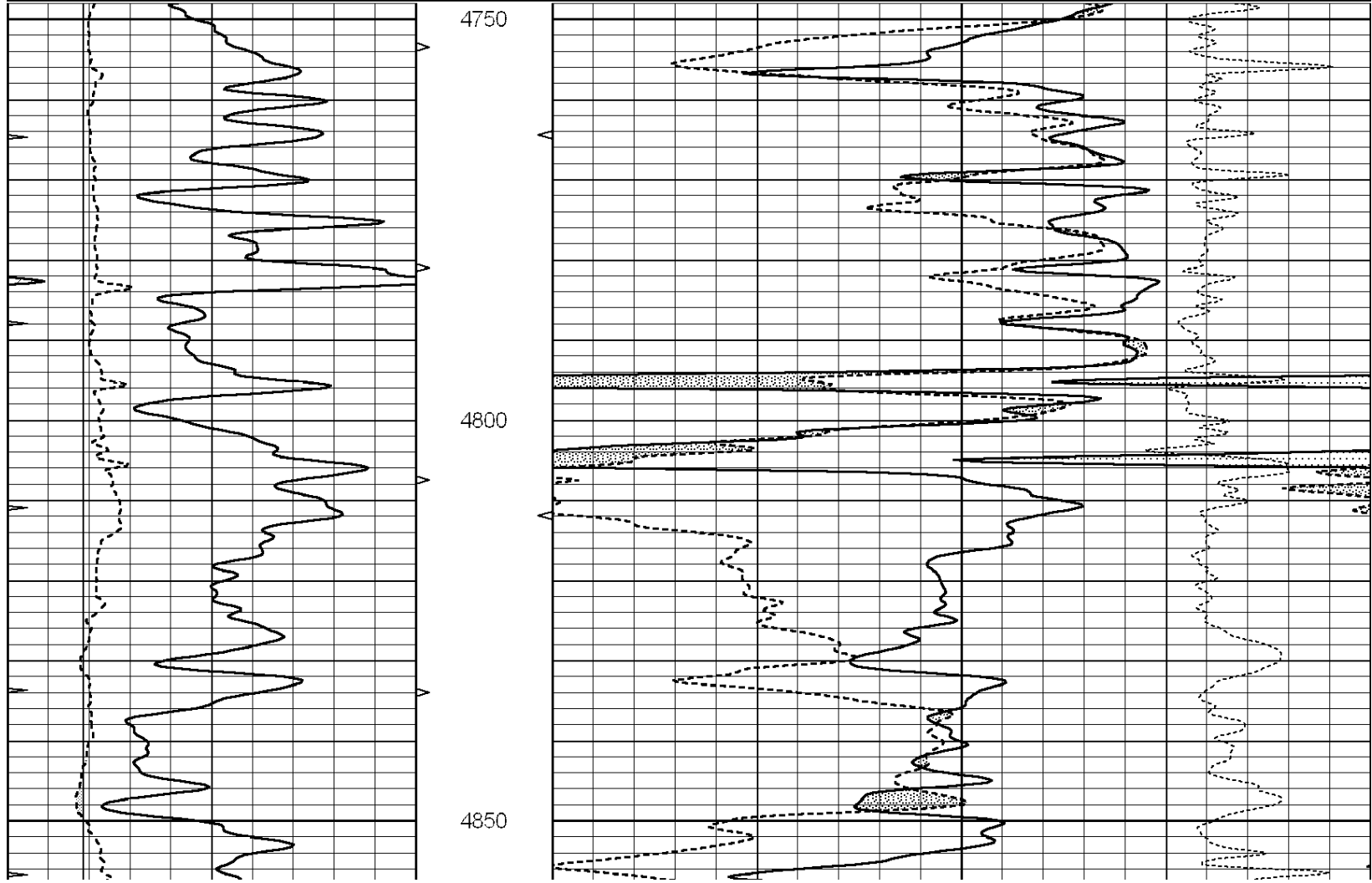


SUPERIOR  
Hays,  
Kansas

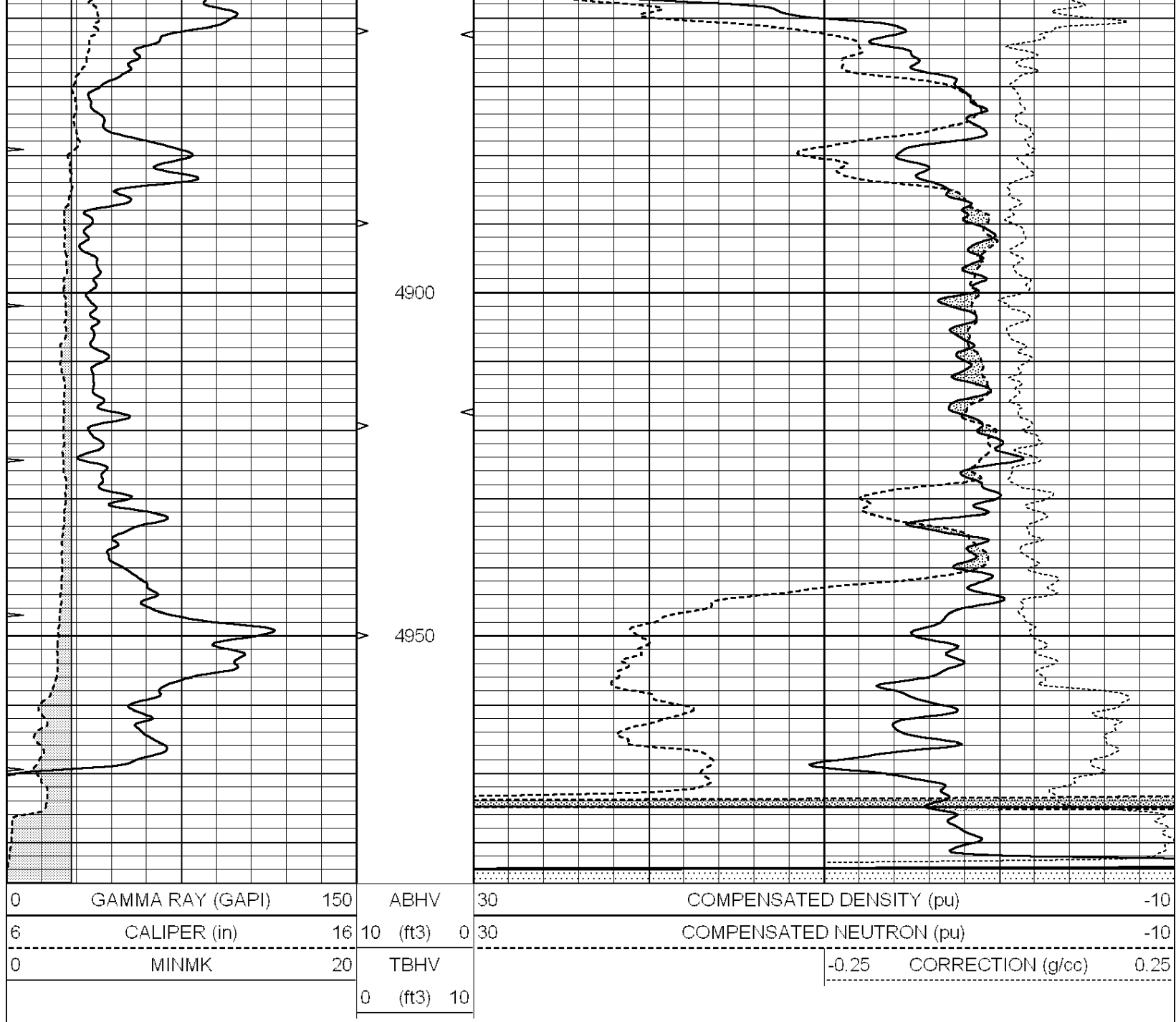
# REPEAT SECTION

Database File: 009569ddn.db  
 Dataset Pathname: pass4.A  
 Presentation Format: den\_neu  
 Dataset Creation: Tue Aug 07 09:04:50 2012  
 Charted by: Depth in Feet scaled 1:240

0	GAMMA RAY (GAPI)	150	ABHV	30	COMPENSATED DENSITY (pu)	-10
6	CALIPER (in)	16	10 (ft3)	0 30	COMPENSATED NEUTRON (pu)	-10
0	MINMK	20	TBHV		-0.25	CORRECTION (g/cc) 0.25
			0 (ft3) 10			







### Calibration Report

Database File: 009569ddn.db  
 Dataset Pathname: pass5.A  
 Dataset Creation: Tue Aug 07 08:57:03 2012

### Compensated Density Calibration Report

Serial-Model: GEAR1-GEARHART  
 Source / Verifier: 147 / 147  
 Master Calibration Performed: Tue Aug 07 07:12:39 2012

#### Master Calibration

	Density		Far Detector	Near Detector	
Magnesium	1.710	g/cc	1243.76	629.14	cps
Aluminum	2.590	g/cc	282.16	435.01	cps

Spine Angle = 76.03

Density/Spine Ratio = 0.576

	Size		Reading	
Small Ring	9.00	in	4.29	V
Large Ring	14.00	in	6.09	V

Compensated Neutron Calibration Report

Serial Number: NUE\_2I  
Tool Model: G

CALIBRATION

Detector	Readings	Target	Normalization
Short Space	1.00 cps	1.00 cps	1.0000
Long Space	1.00 cps	1.00 cps	1.0000

Gamma Ray Calibration Report

Serial Number: GR2  
Tool Model: OPEN  
Performed: Tue Aug 07 08:11:21 2012

Calibrator Value: 200.0 GAPI

Background Reading: 0.0 cps  
Calibrator Reading: 740.0 cps

Sensitivity: 0.7500 GAPI/cps