

**SUPERIOR
Hays,
Kansas**

**DUAL
INDUCTION
LOG**

Company NORSTAR PETROLEUM, INC.
Well BARRETT FAMILY TRUST #1-35
Field
County THOMAS State KANSAS

Location: API #: 15-193-20858
335' FSL & 2058' FEL
SEC 35 TWP 9S RGE 35W
Permanent Datum GROUND LEVEL Elevation 3328
Log Measured From KELLY BUSHING 5' A.G.L.
Drilling Measured From KELLY BUSHING
Other Services
CDL/CNL
SONIC/MEL
Elevation
K.B. 3333
D.F.
G.L. 3328

Date	8-7-12
Run Number	ONE
Depth Driller	4978
Depth Logger	4978
Bottom Logged Interval	4976
Top Log Interval	00
Casing Driller	290
Casing Logger	290
Bit Size	7.875
Type Fluid in Hole	CHEMICAL MUD
Density / Viscosity	9.5 / 50
pH / Fluid Loss	10.0 / 12.0
Source of Sample	FLOWLINE
Rm @ Meas. Temp	0.48 @ 82F
Rmf @ Meas. Temp	0.36 @ 82F
Rmc @ Meas. Temp	0.58 @ 82F
Source of Rmf / Rmc	MEASURED
Rm @ BHT	.320 @ 124F
Time Circulation Stopped	3 HOURS
Time Logger on Bottom	5:15 A.M.
Maximum Recorded Temperature	124F
Equipment Number	860
Location	HAYS, KS.
Recorded By	RUPP
Witnessed By	BOB ELDER

<<< Fold Here >>>

All interpretations are opinions based on inferences from electrical or other measurements and we cannot and do not guarantee the accuracy or correctness of any interpretation, and we shall not, except in the case of gross or willful negligence on our part, be liable or responsible for any loss, costs, damages, or expenses incurred or sustained by anyone resulting from any interpretation made by any of our officers, agents or employees. These interpretations are also subject to our general terms and conditions set out in our current Price Schedule.

Comments

SUPERIOR WELL SERVICES
785-628-6395
THANK YOU FOR YOUR BUSINESS
DIRECTIONS: LEVANT & I-70 EXIT, 10S TO RD. "G", 1/2E, N & E INTO.



SUPERIOR
Hays,
Kansas

MAIN SECTION

Database File: 009569ddn.db
 Dataset Pathname: pass3.1A
 Presentation Format: dil2
 Dataset Creation: Tue Aug 07 07:17:26 2012
 Charted by: Depth in Feet scaled 1:600

0 Gamma Ray (GAPI) 150

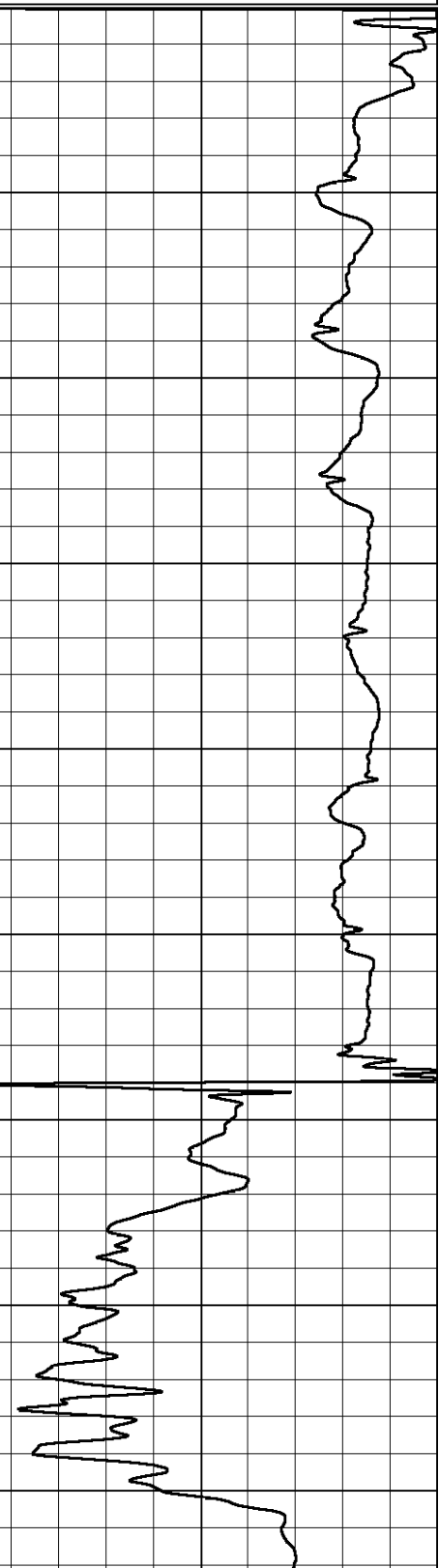
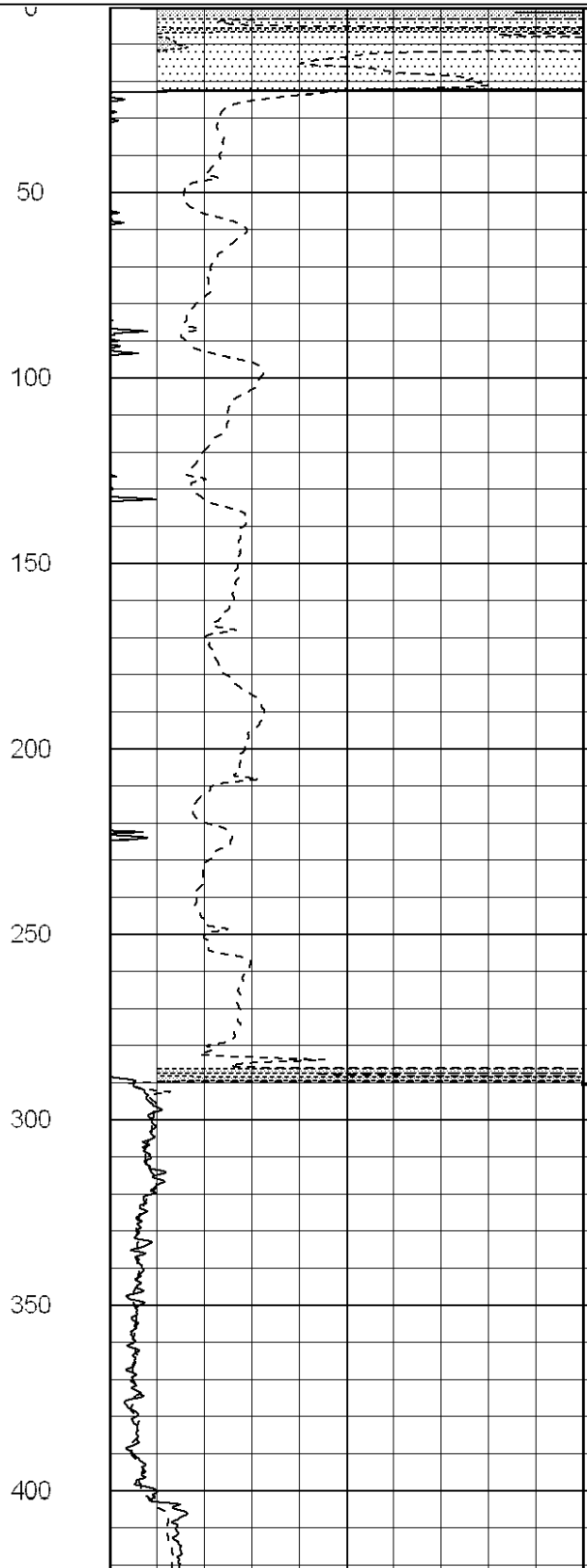
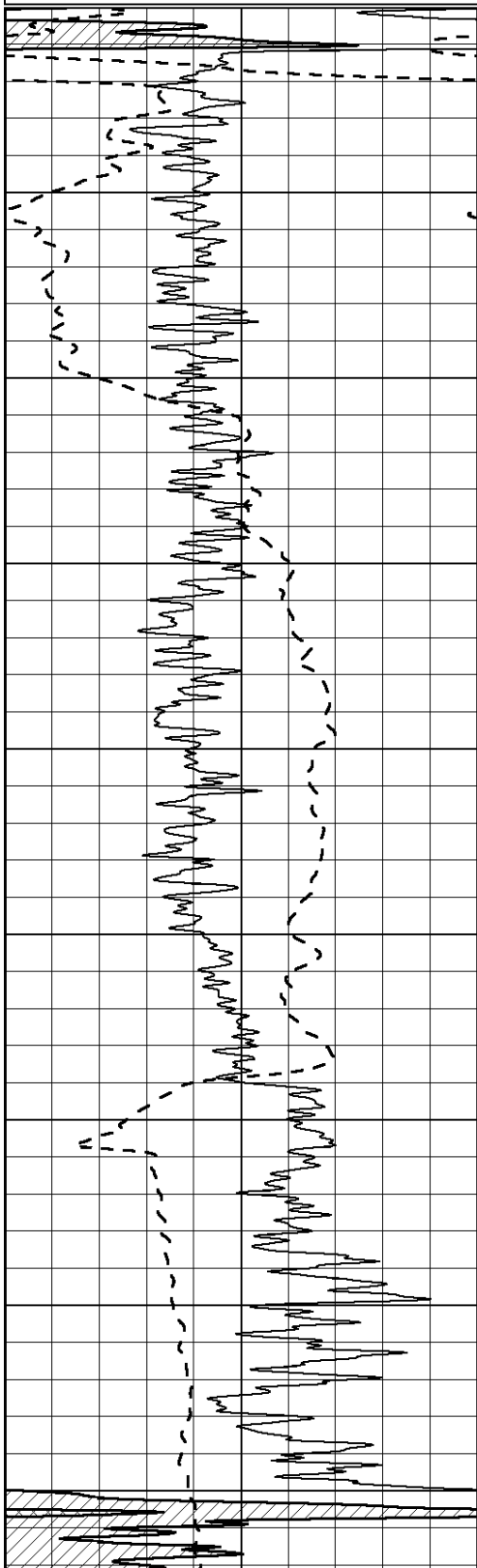
0 RLL3 (Ohm-m) 50

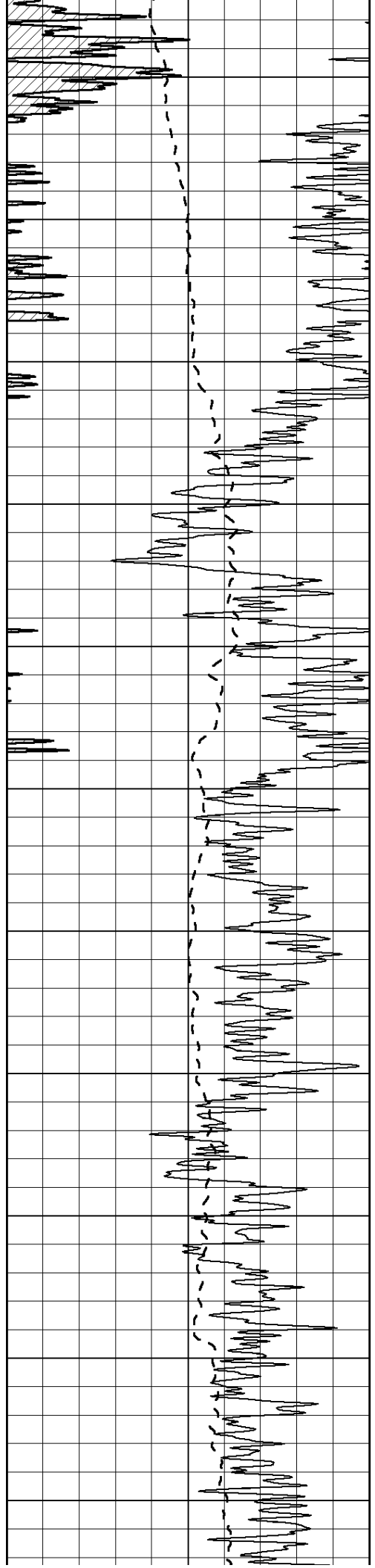
0 Deep Induction (Ohm-m) 50

1000 CILD (mmho/m) 0

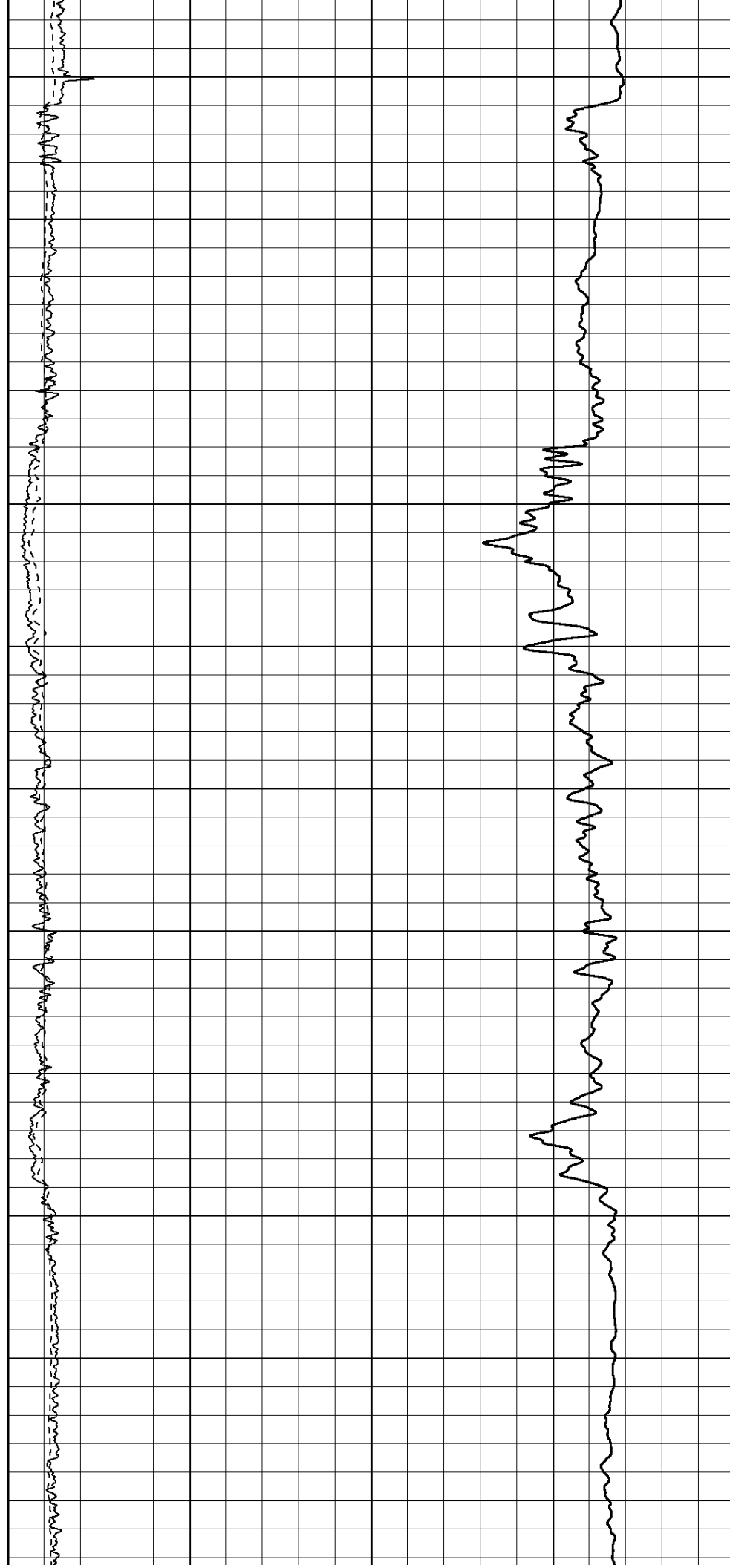
50 RILD X10 (Ohm-m) 500

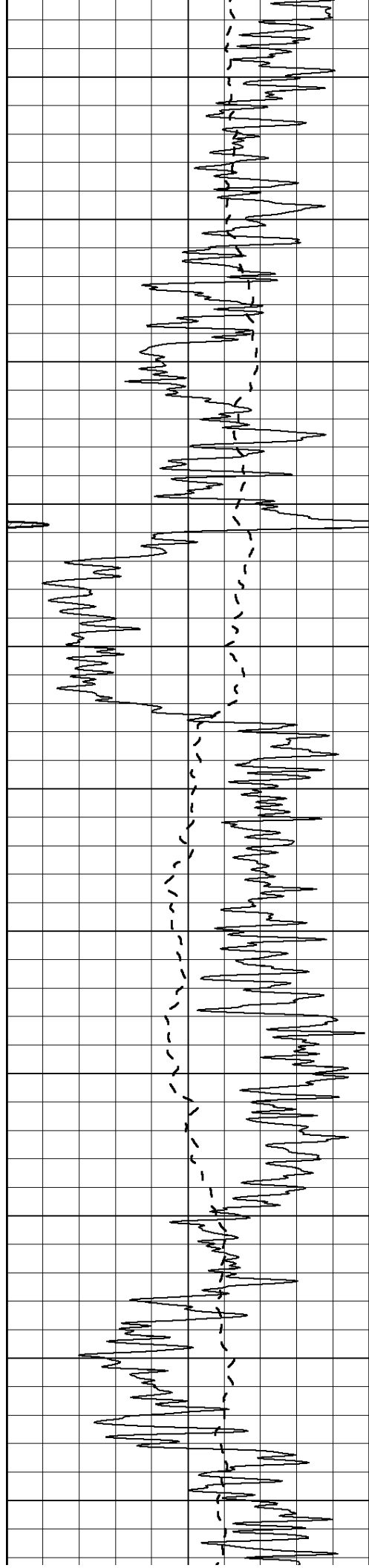
50 RLL3 X10 (Ohm-m) 500



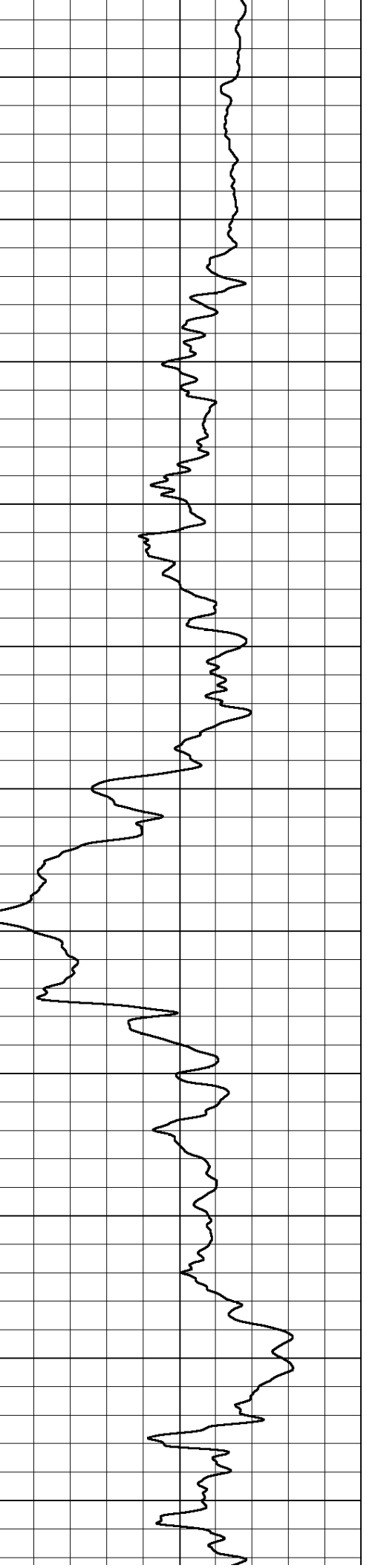
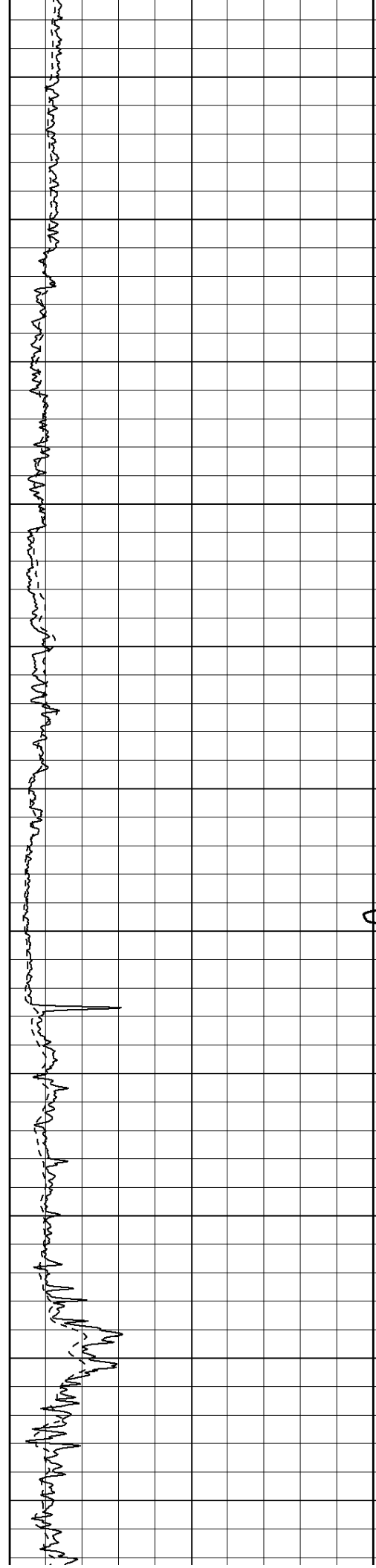


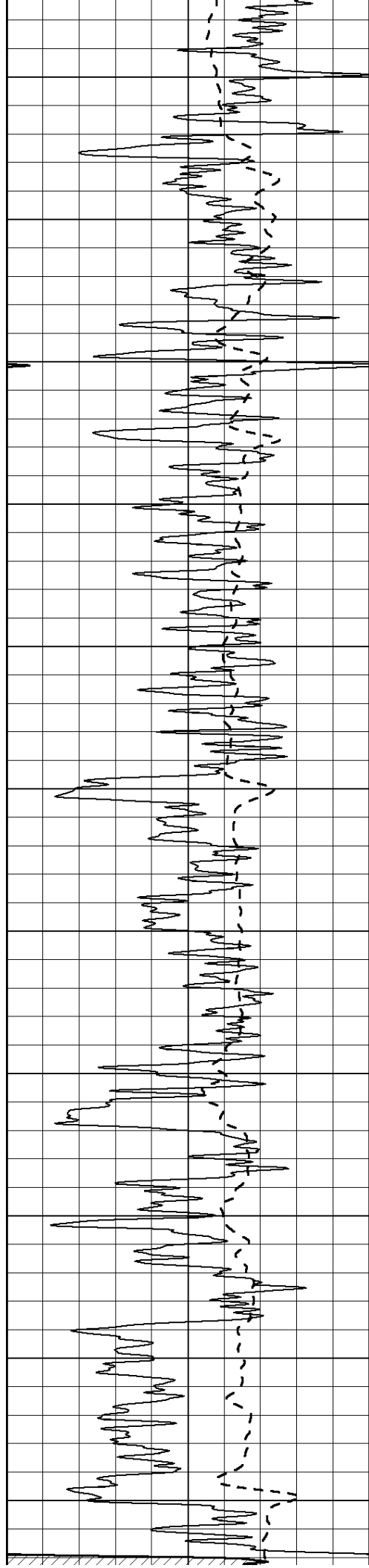
450
500
550
600
650
700
750
800
850
900
950





1000
1050
1100
1150
1200
1250
1300
1350
1400
1450
1500





1550

1600

1650

1700

1750

1800

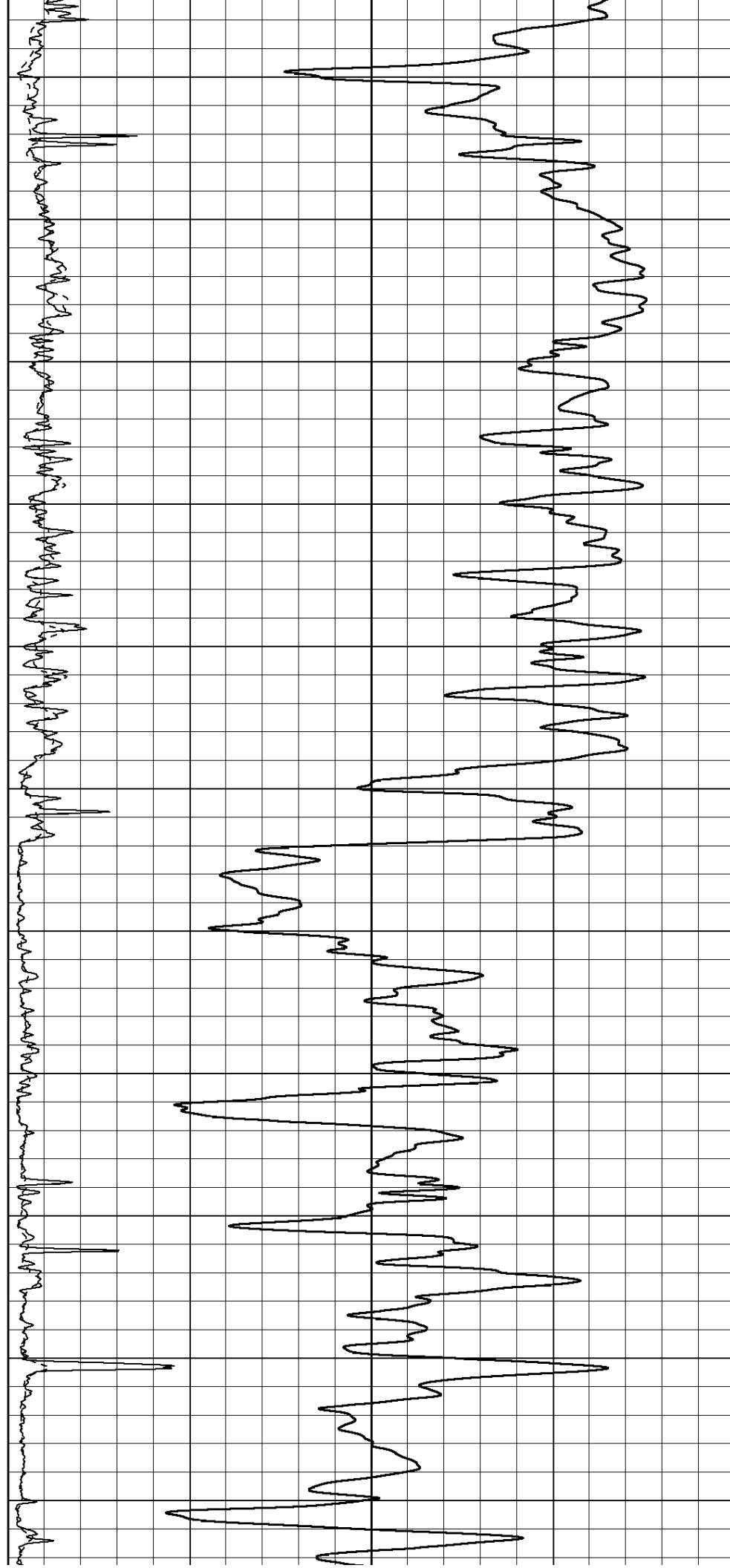
1850

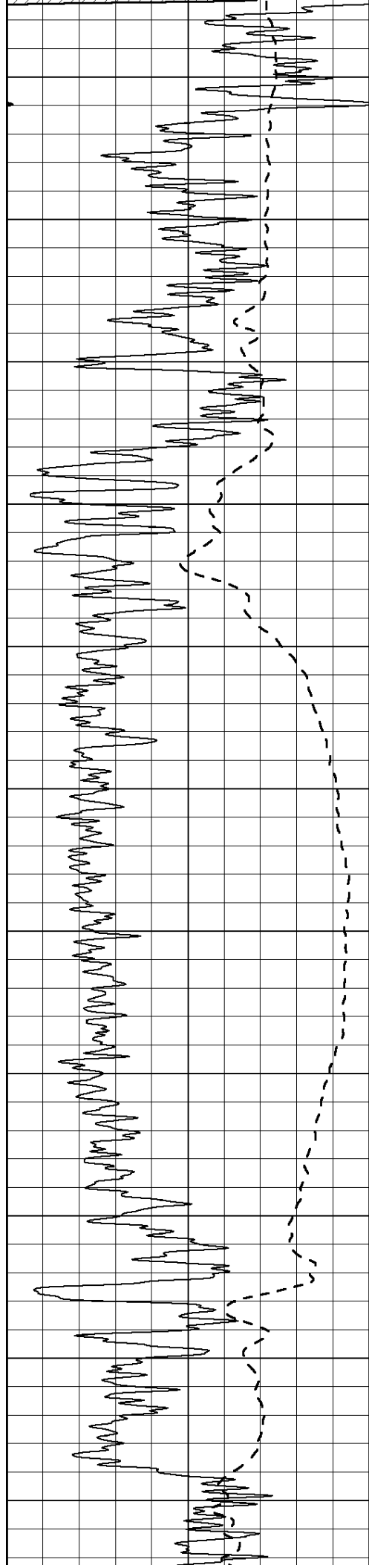
1900

1950

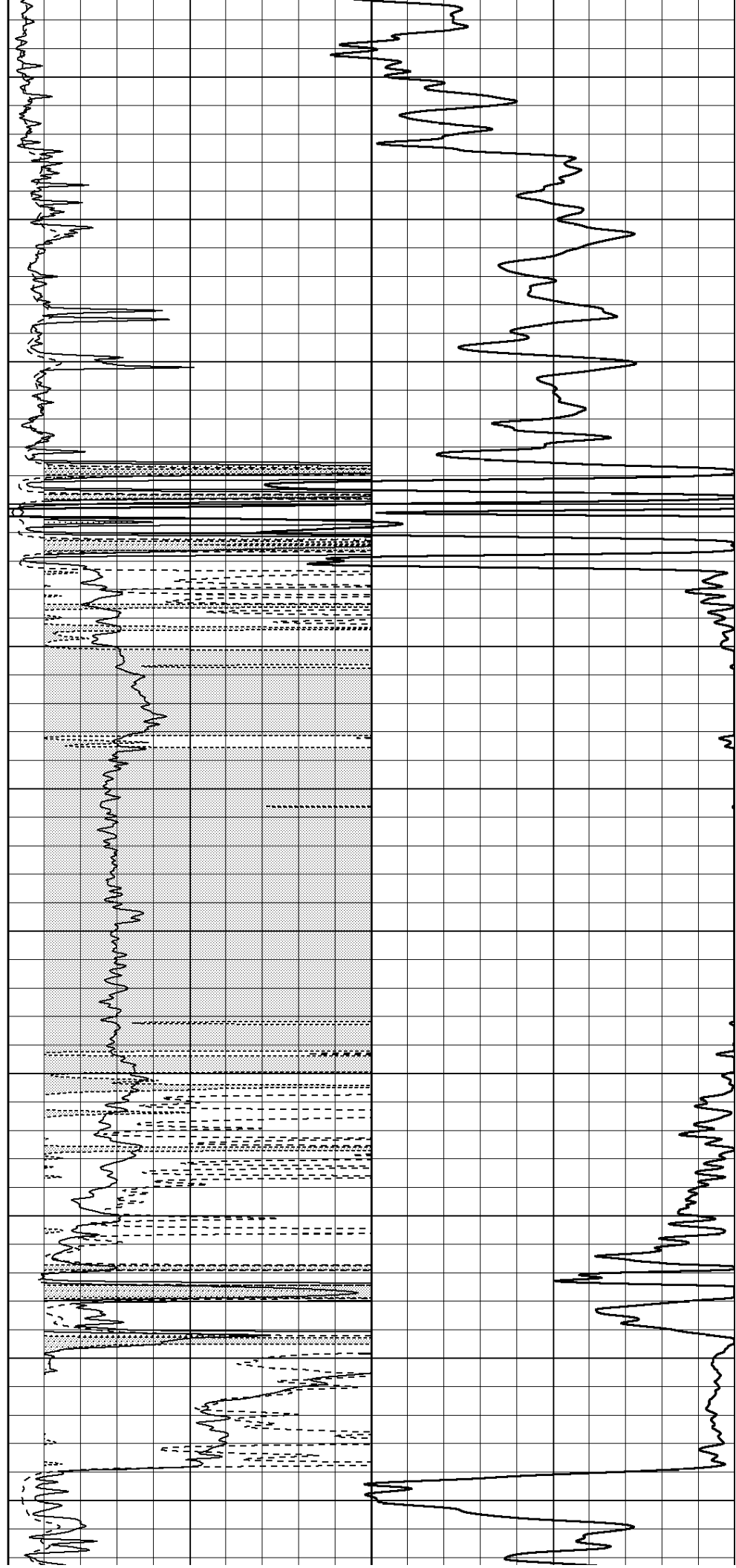
2000

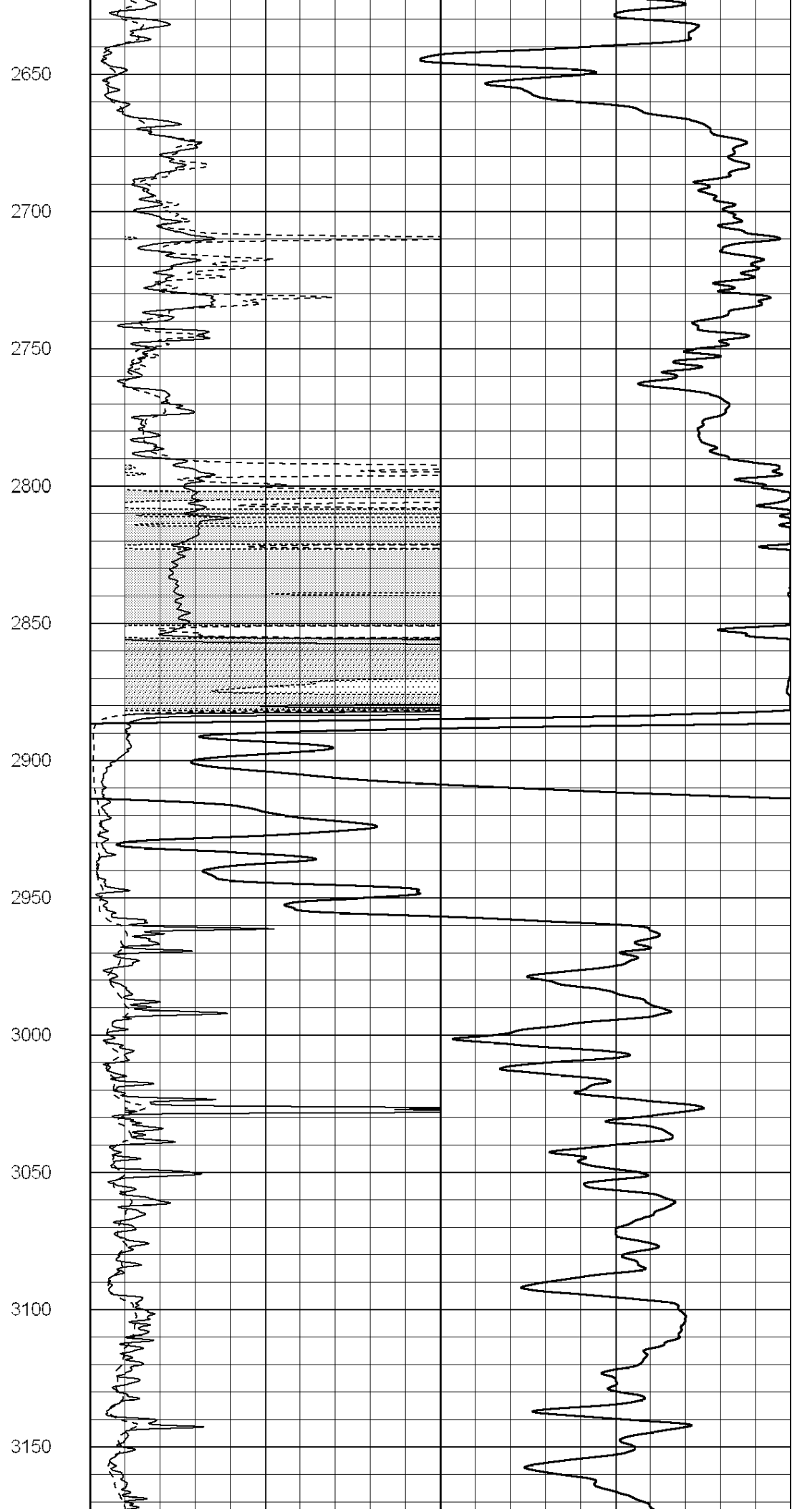
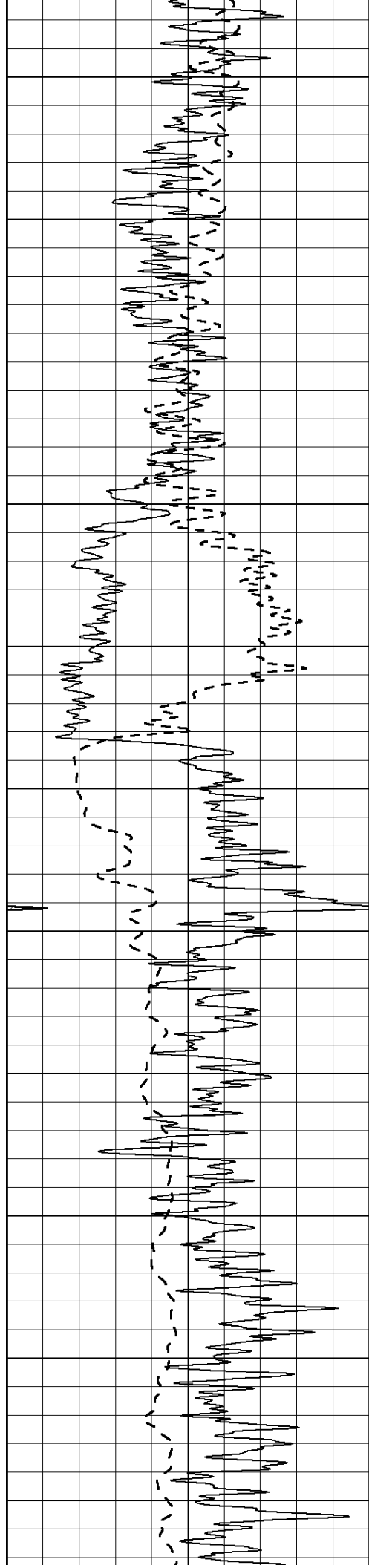
2050

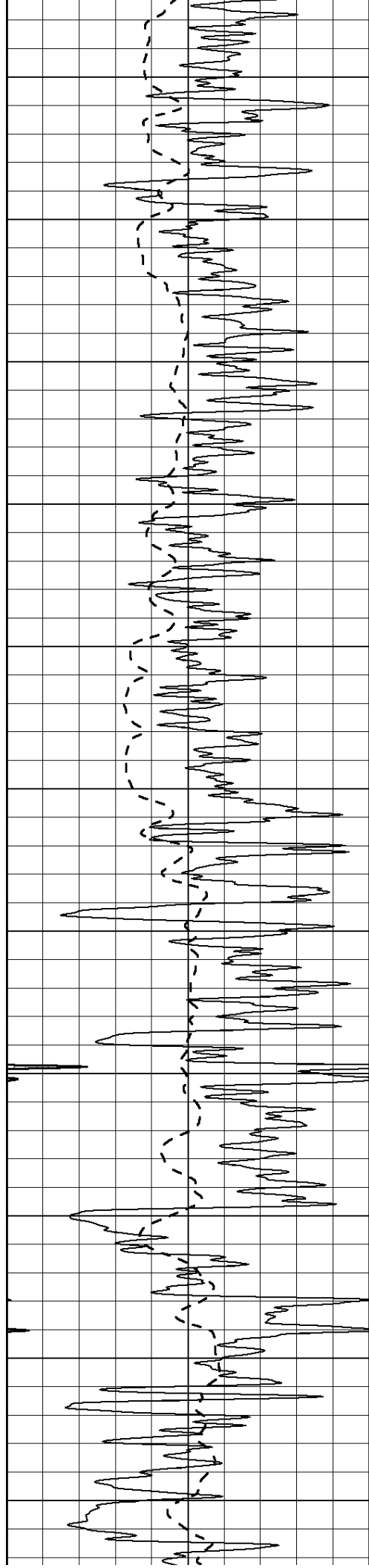




2100
2150
2200
2250
2300
2350
2400
2450
2500
2550
2600







3200

3250

3300

3350

3400

3450

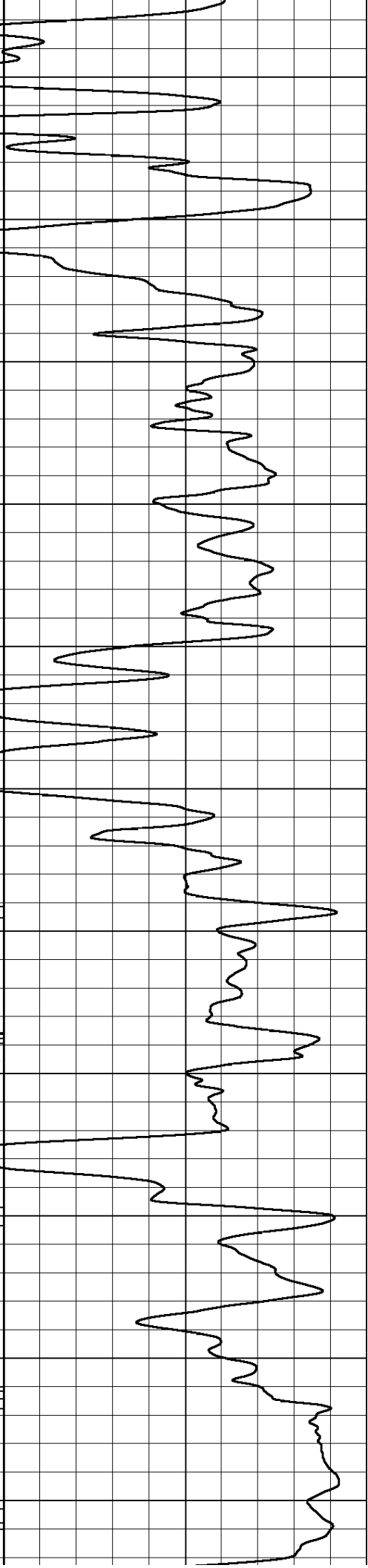
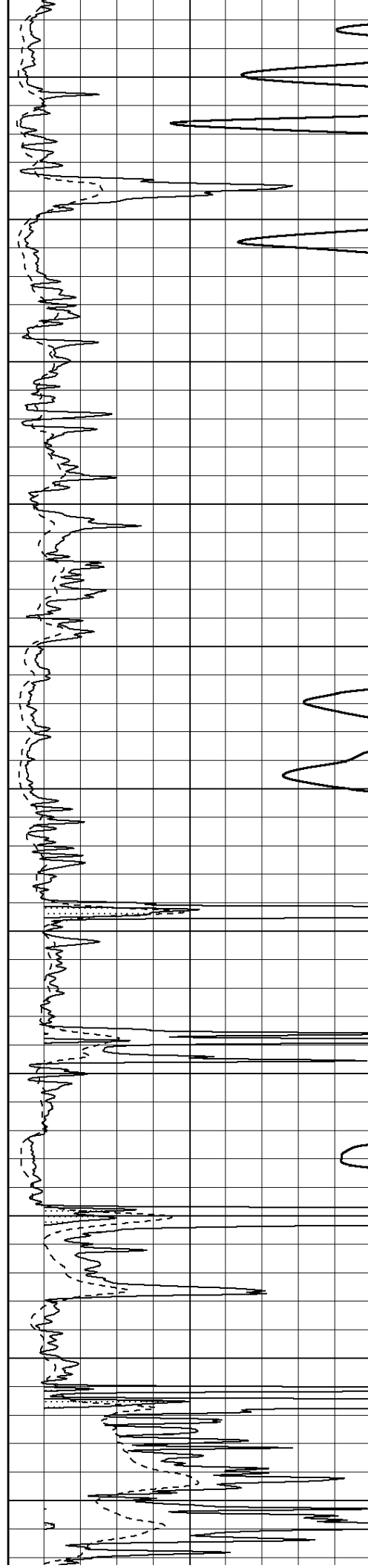
3500

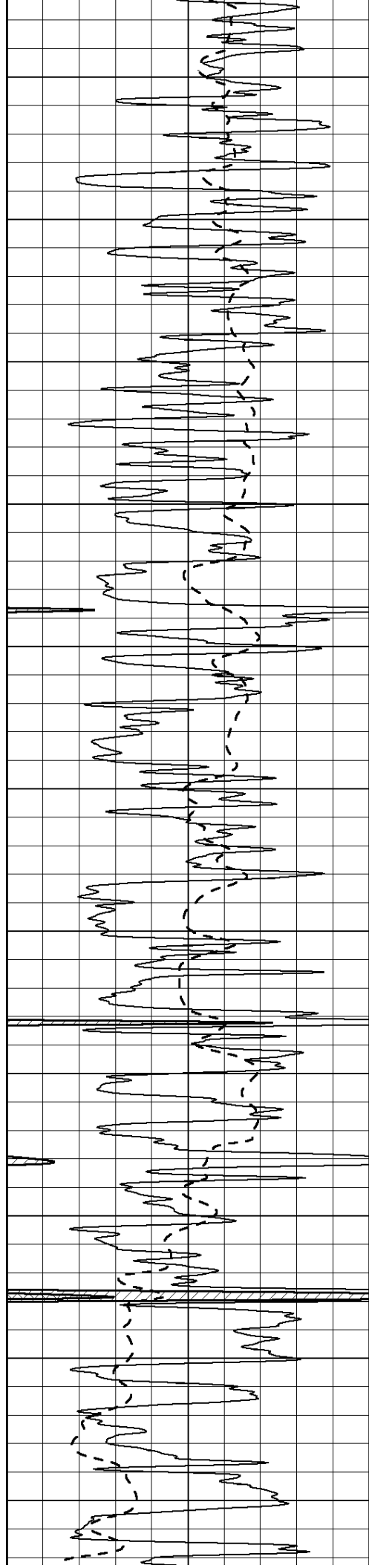
3550

3600

3650

3700





3750

3800

3850

3900

3950

4000

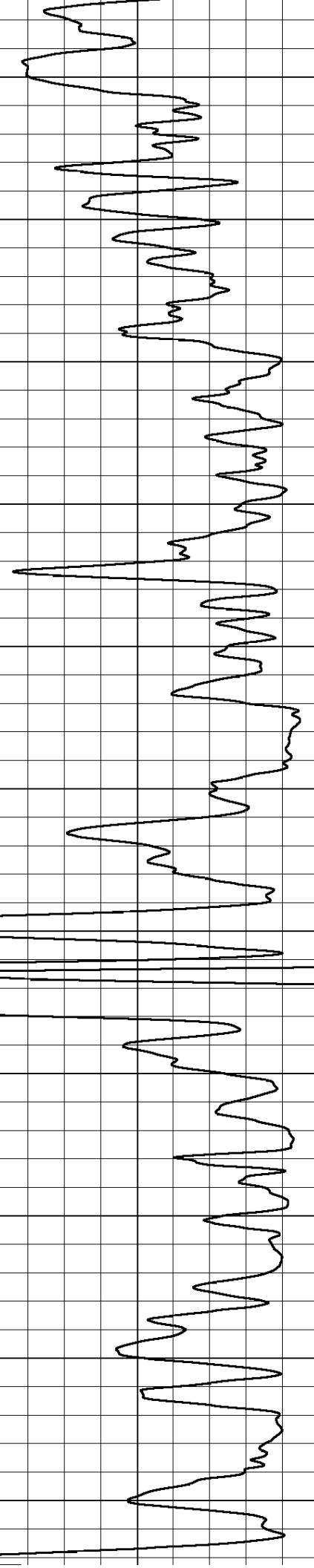
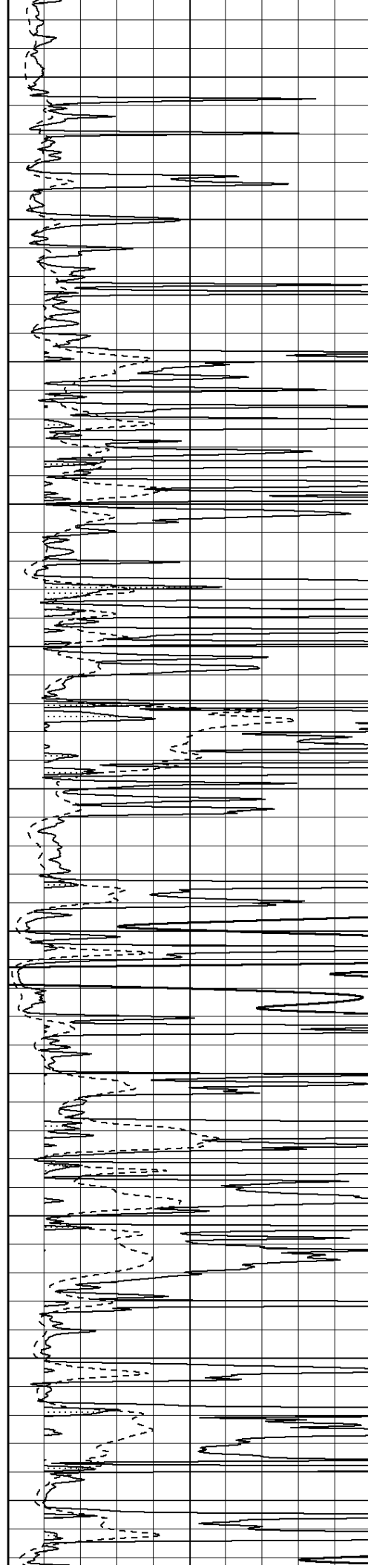
4050

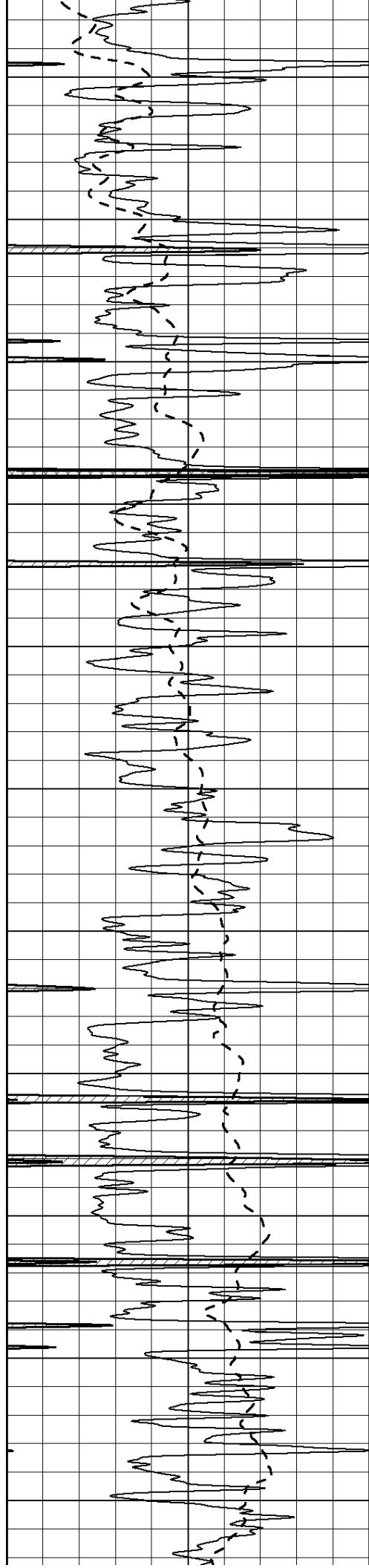
4100

4150

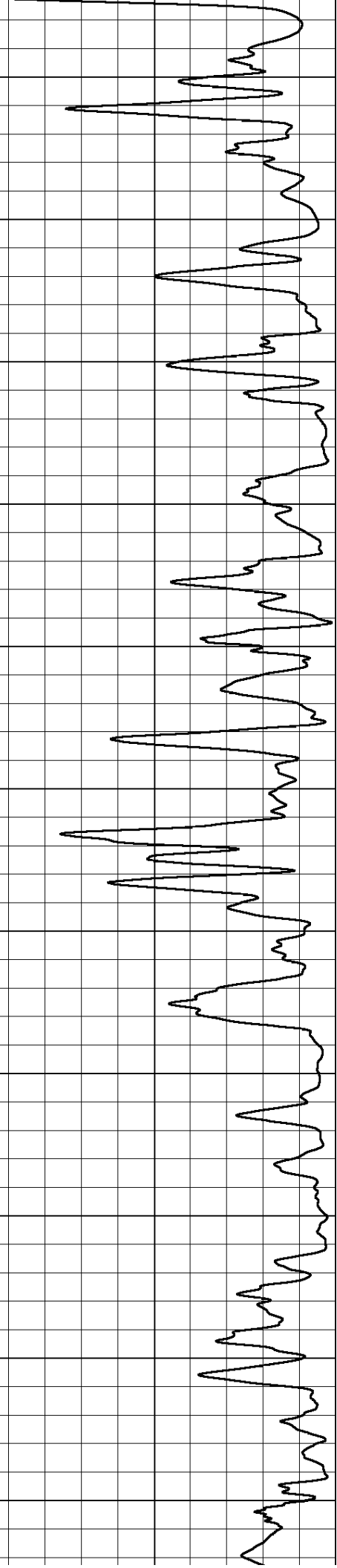
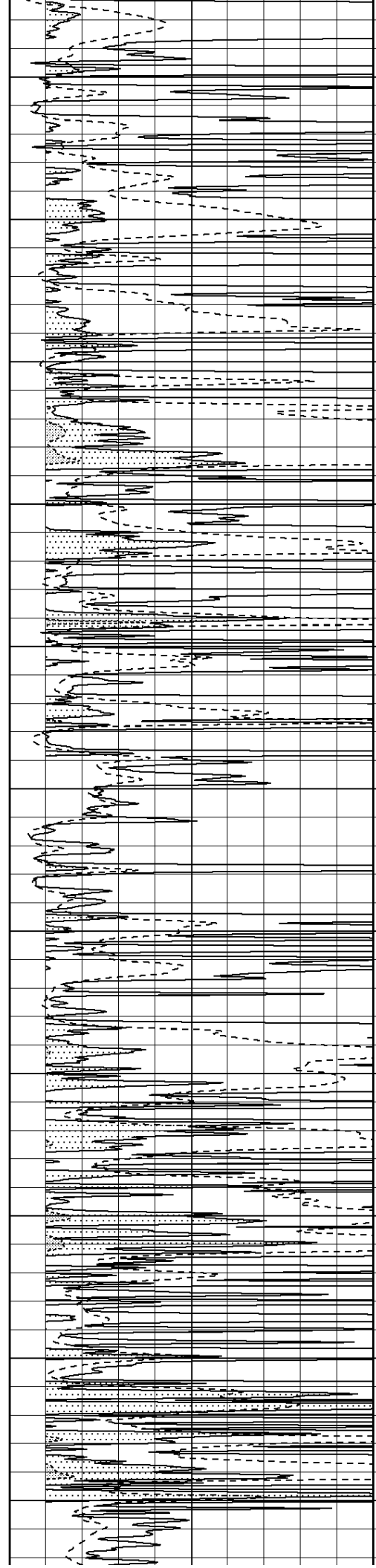
4200

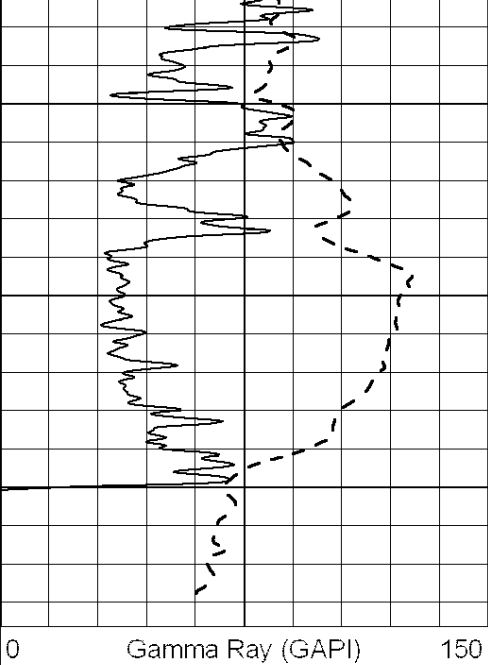
4250



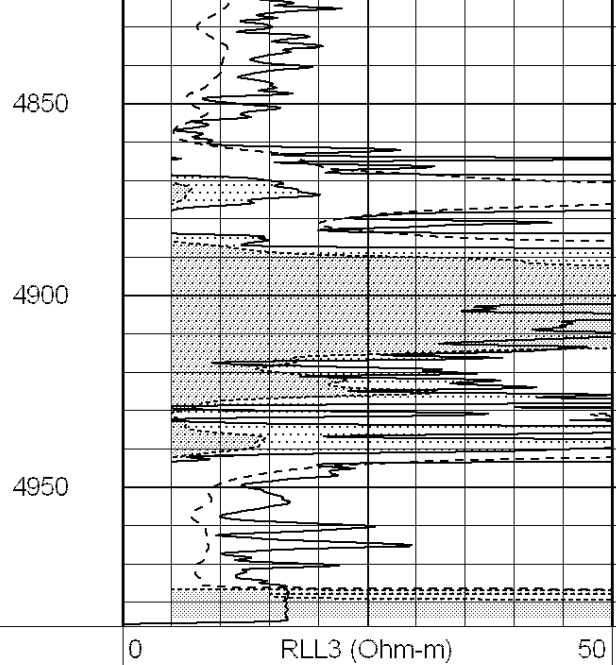


4300
4350
4400
4450
4500
4550
4600
4650
4700
4750
4800

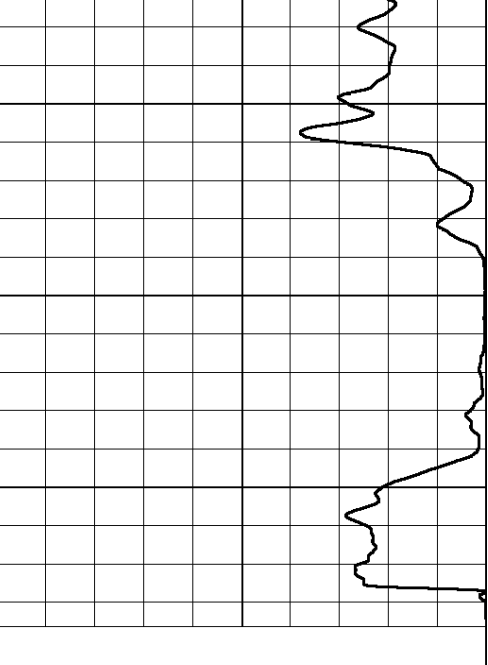




0 Gamma Ray (GAPI) 150



0 RLL3 (Ohm-m) 50
 0 Deep Induction (Ohm-m) 50



1000 CILD (mmho/m) 0

50 RILD X10 (Ohm-m) 500
 50 RLL3 X10 (Ohm-m) 500



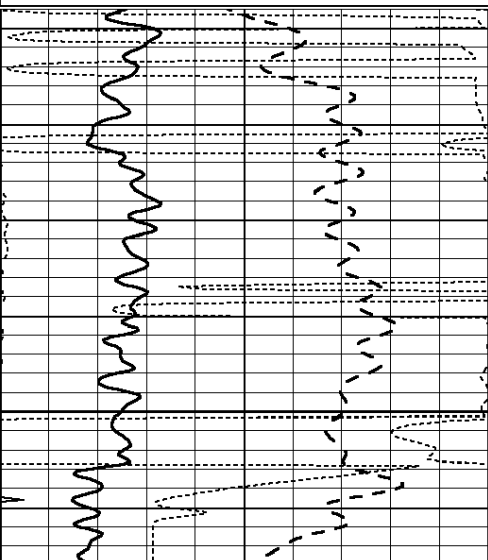
SUPERIOR
 Hays,
 Kansas

MAIN SECTION

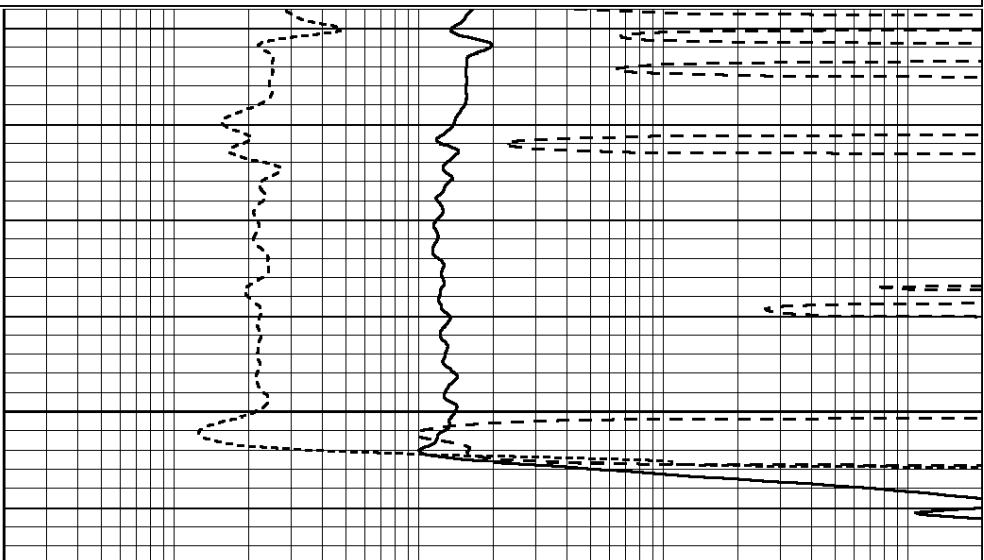
Database File: 009569ddn.db
 Dataset Pathname: pass3.1A
 Presentation Format: dil
 Dataset Creation: Tue Aug 07 07:17:26 2012
 Charted by: Depth in Feet scaled 1:240

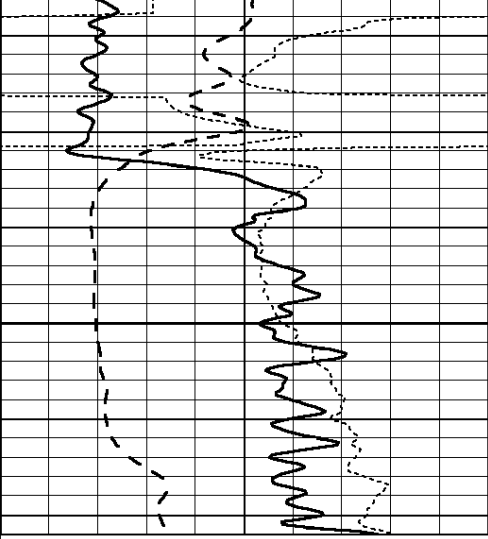
0 GAMMA RAY (GAPI) 150
 -100 SP (mV) 100
 -250 RxoRt 50
 0 MINMK 20

0.2 RLL3 (Ohm-m) 2000
 0.2 DEEP INDUCTION (Ohm-m) 2000
 0.2 MEDIUM INDUCTION (Ohm-m) 2000



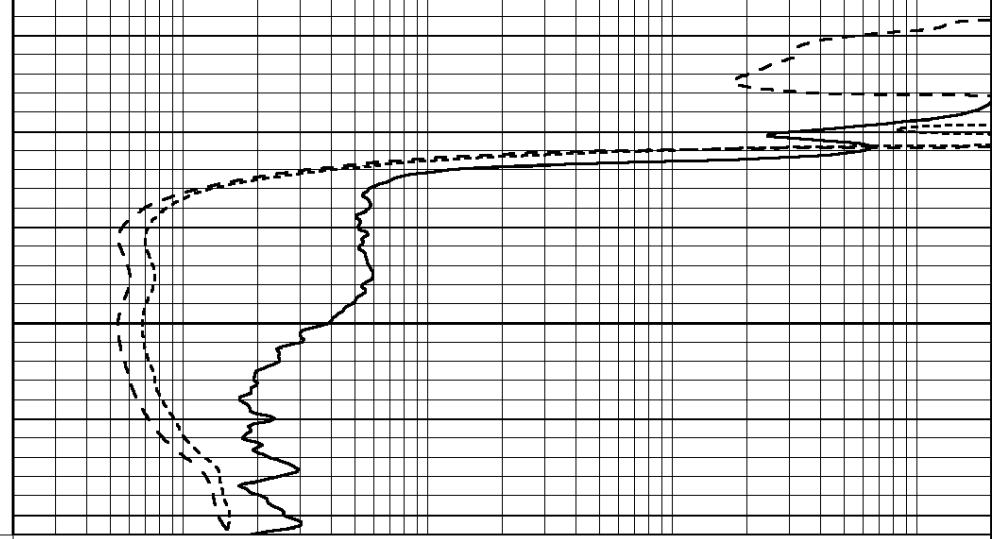
2850





2900

0	GAMMA RAY (GAPI)	150
-100	SP (mV)	100
-250	RxoRt	50
0	MINMK	20



0.2	RLL3 (Ohm-m)	2000
0.2	DEEP INDUCTION (Ohm-m)	2000
0.2	MEDIUM INDUCTION (Ohm-m)	2000



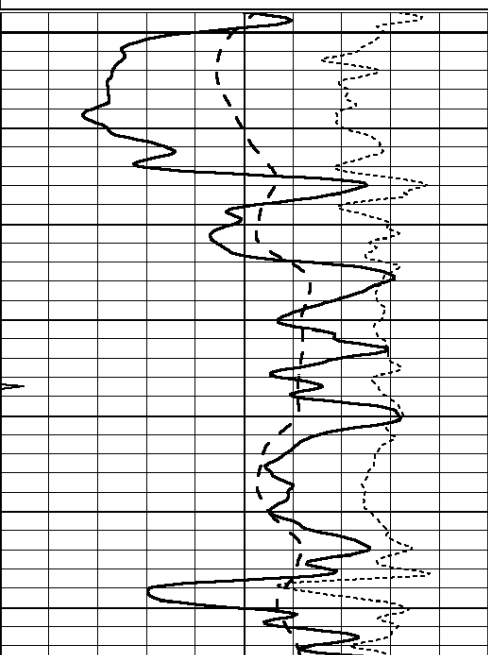
SUPERIOR
Hays,
Kansas

MAIN SECTION

Database File: 009569ddn.db
 Dataset Pathname: pass3.1A
 Presentation Format: dil
 Dataset Creation: Tue Aug 07 07:17:26 2012
 Charted by: Depth in Feet scaled 1:240

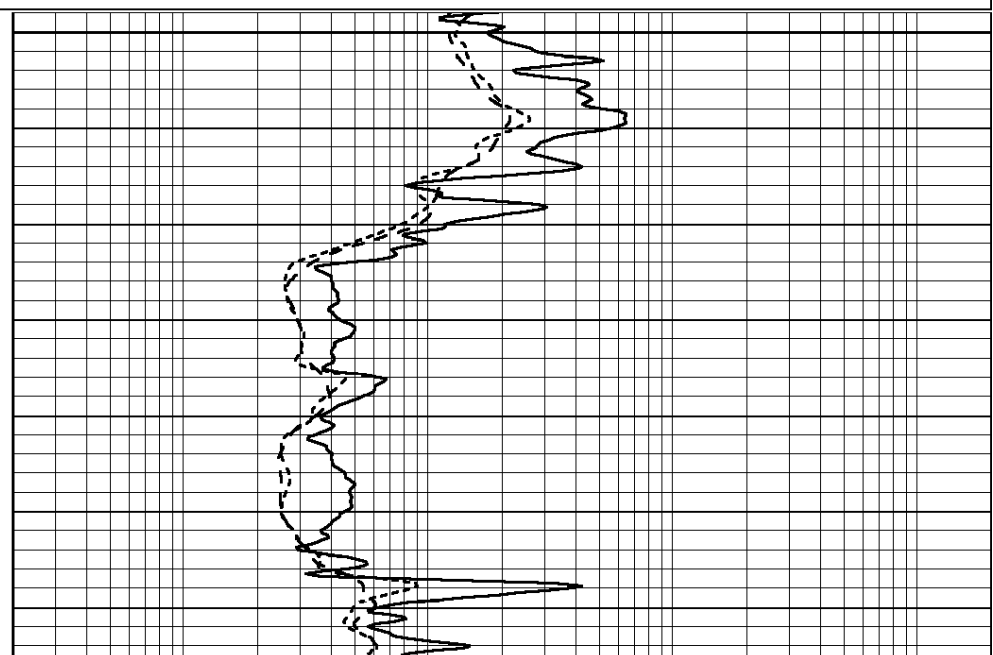
0	GAMMA RAY (GAPI)	150
-100	SP (mV)	100
-250	RxoRt	50
0	MINMK	20

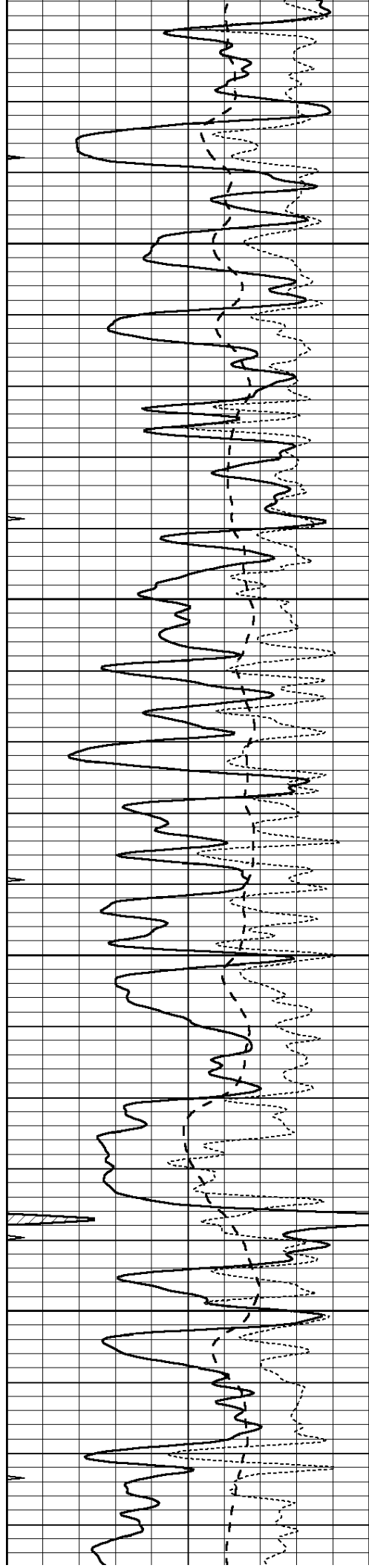
0.2	RLL3 (Ohm-m)	2000
0.2	DEEP INDUCTION (Ohm-m)	2000
0.2	MEDIUM INDUCTION (Ohm-m)	2000



3700

3750



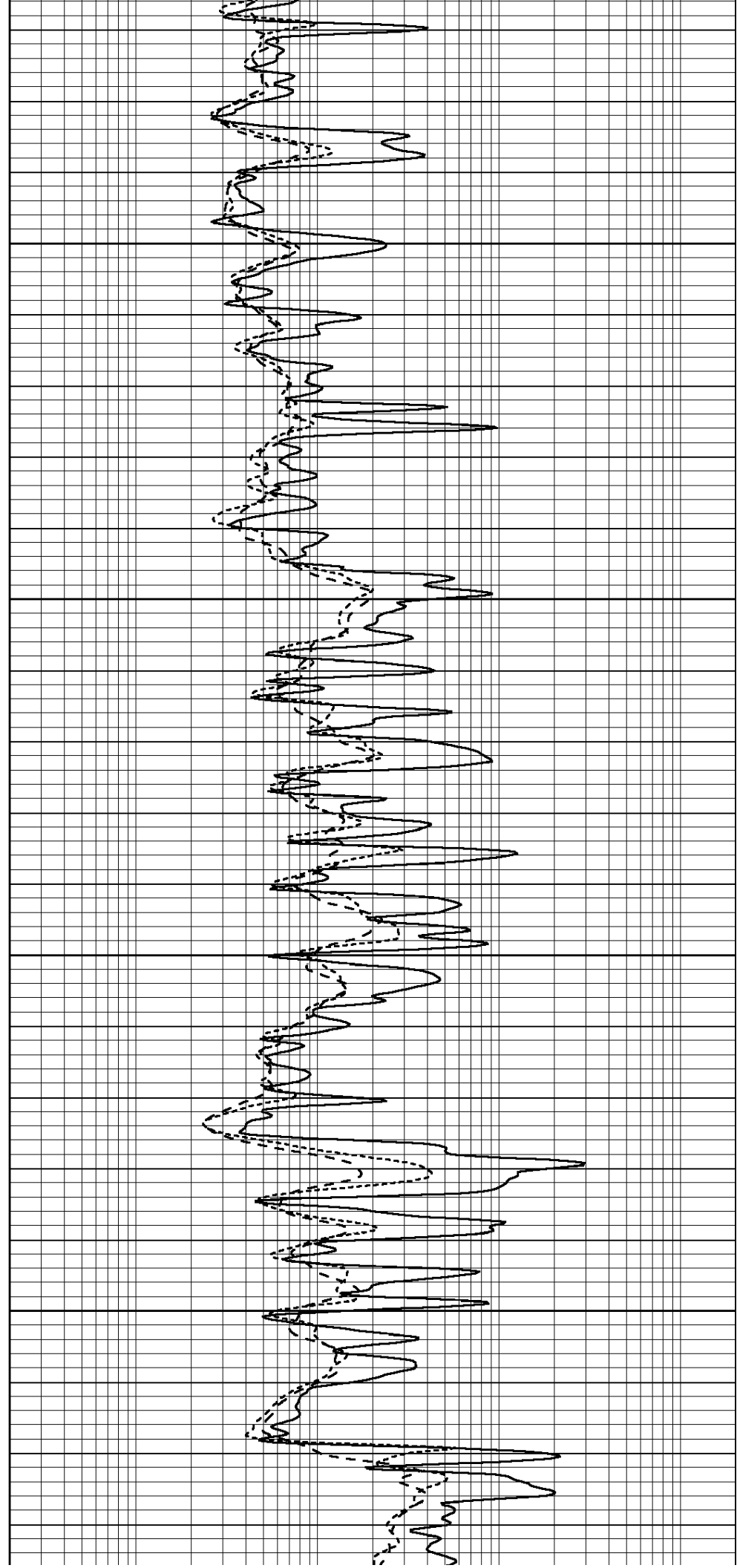


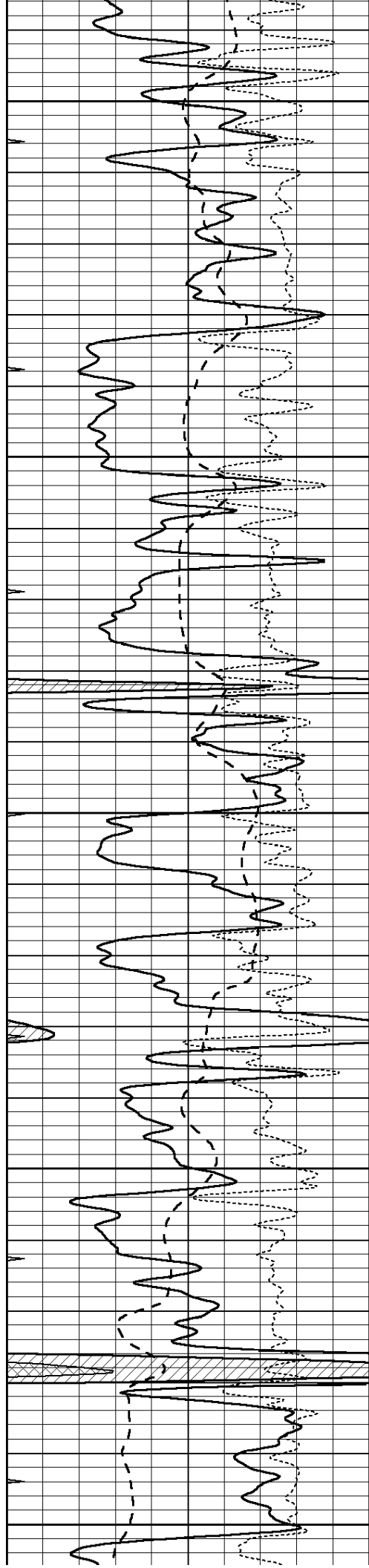
3800

3850

3900

3950





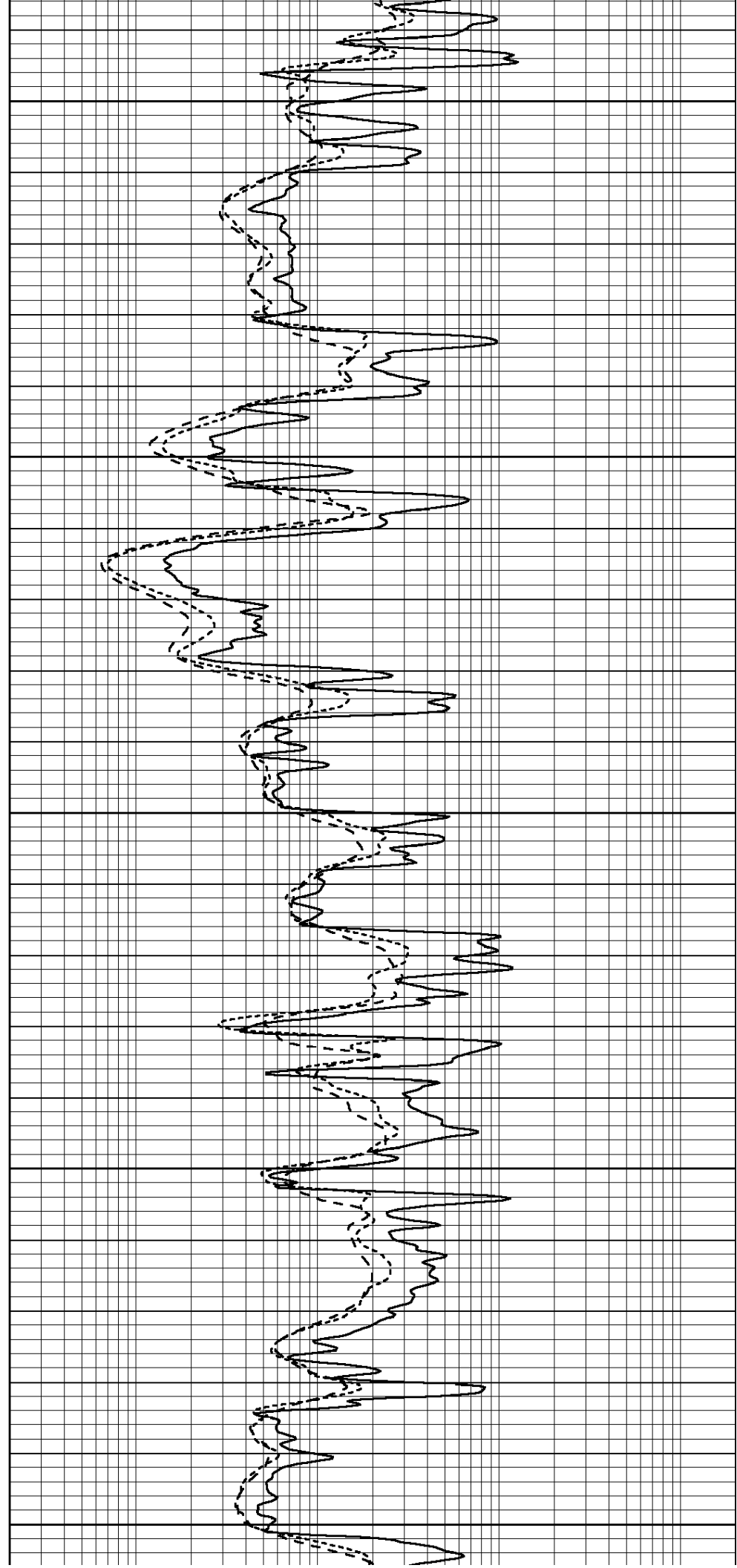
4000

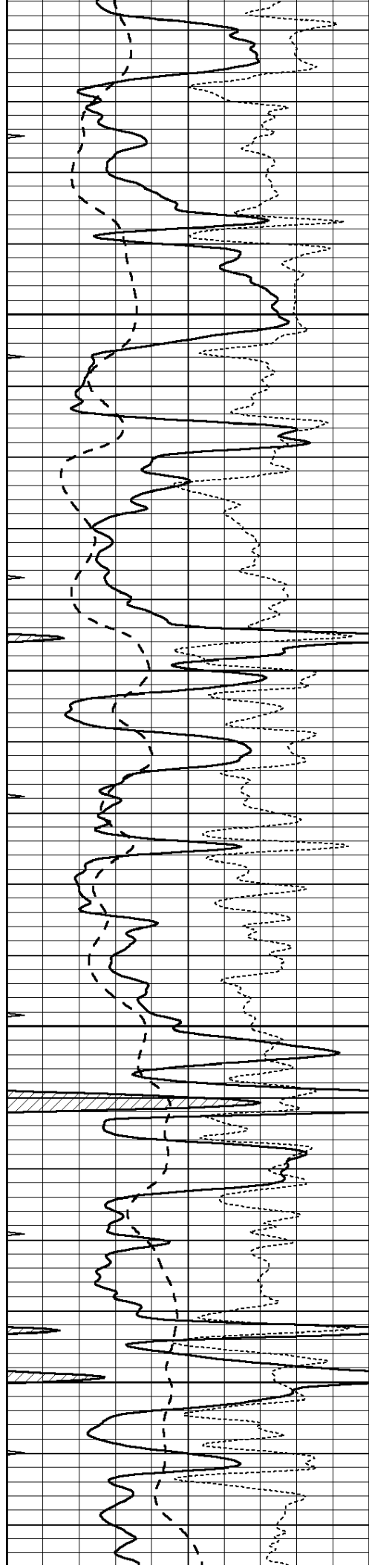
4050

4100

4150

4200



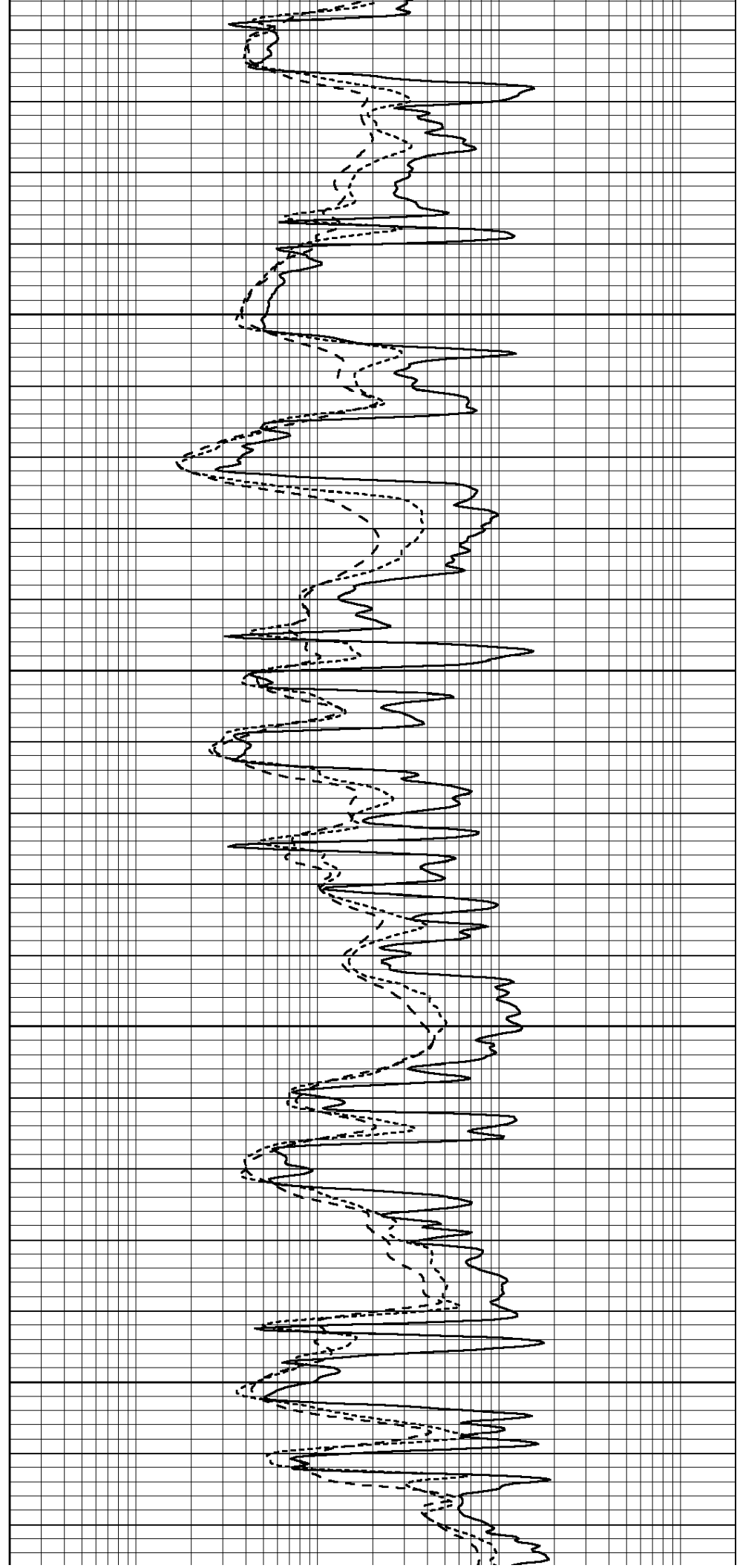


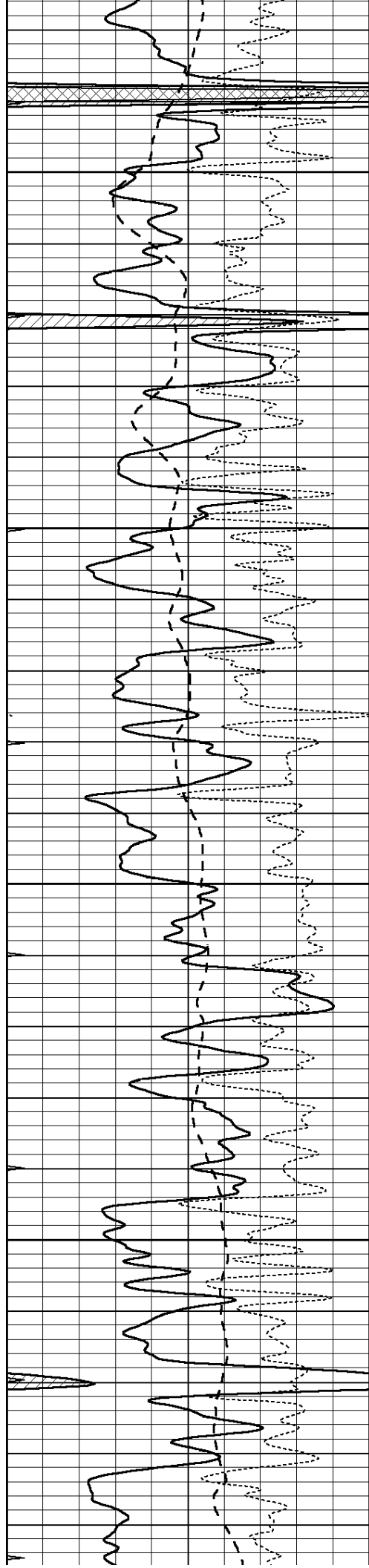
4250

4300

4350

4400



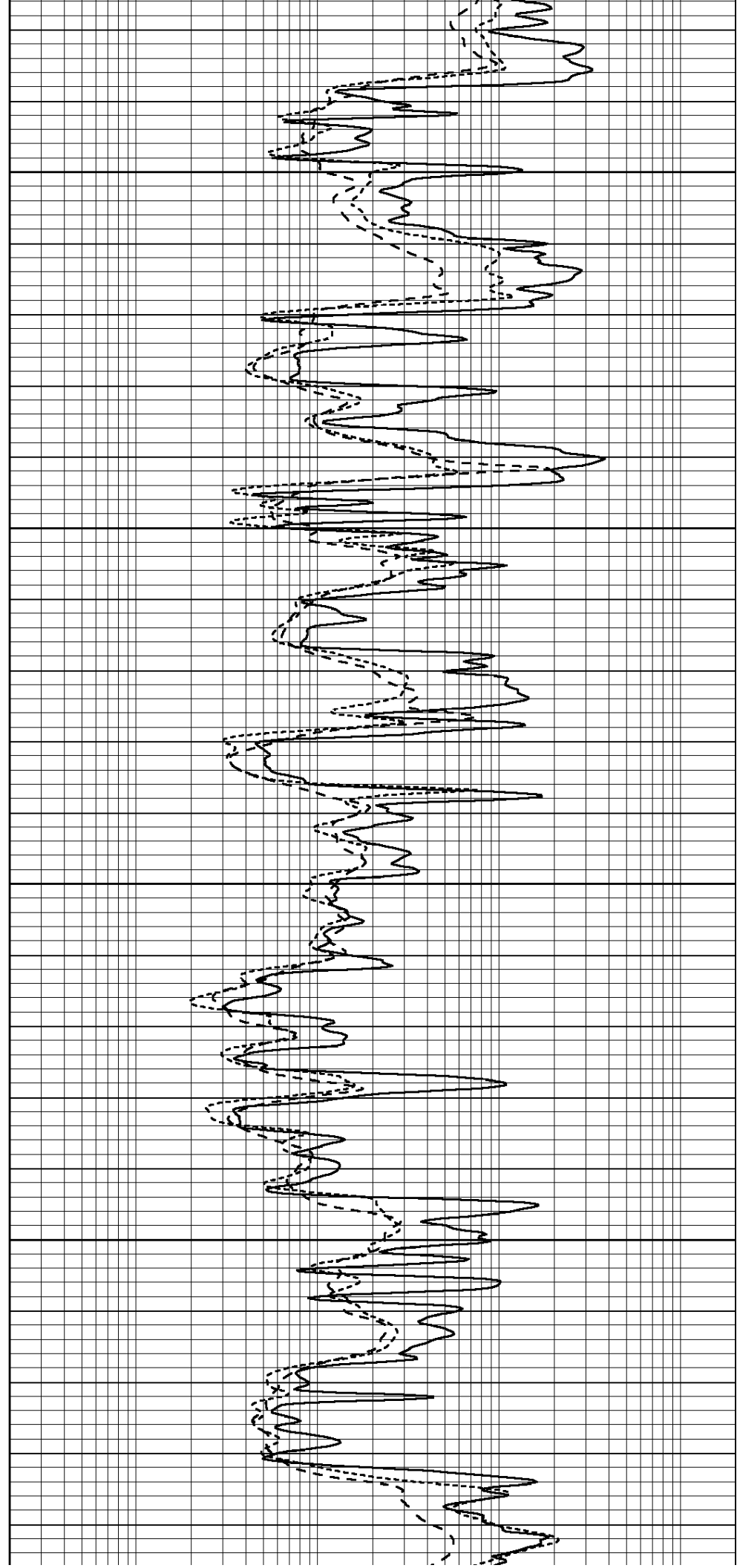


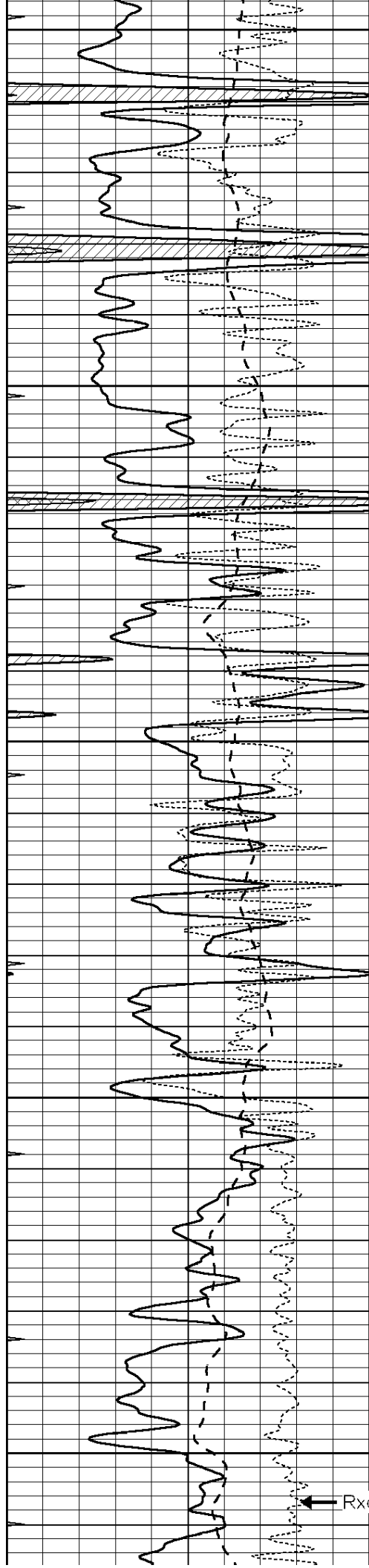
4450

4500

4550

4600





4650

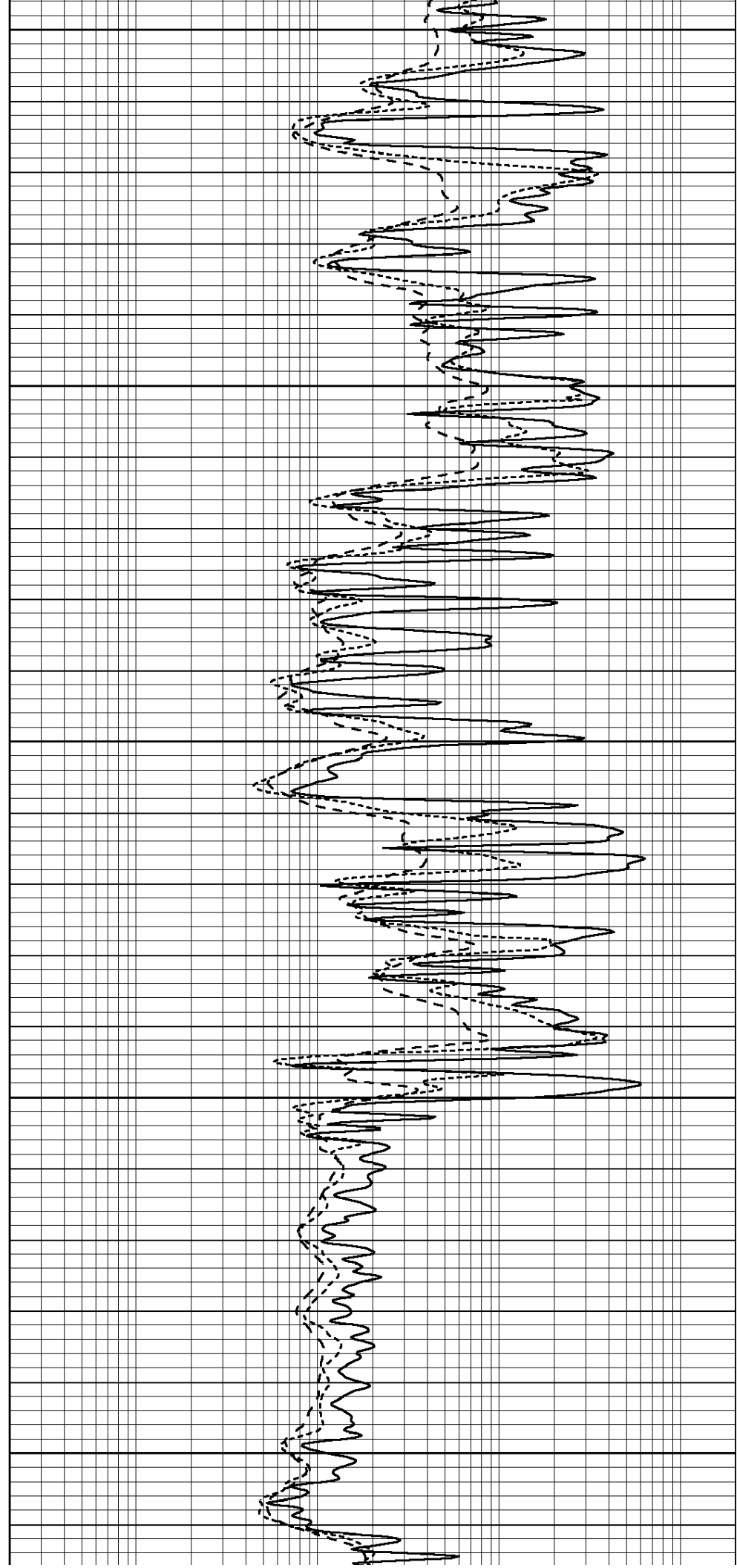
4700

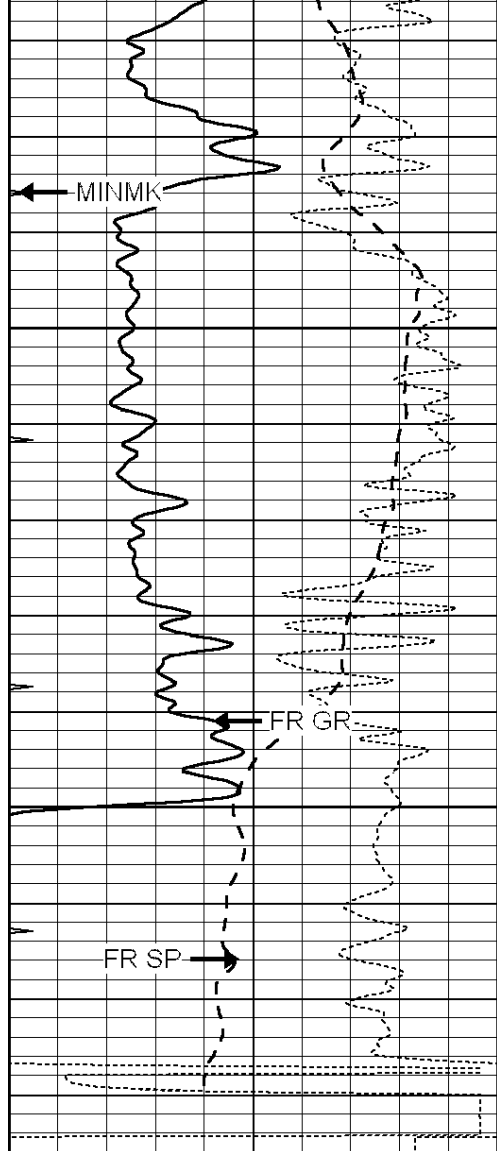
4750

4800

4850

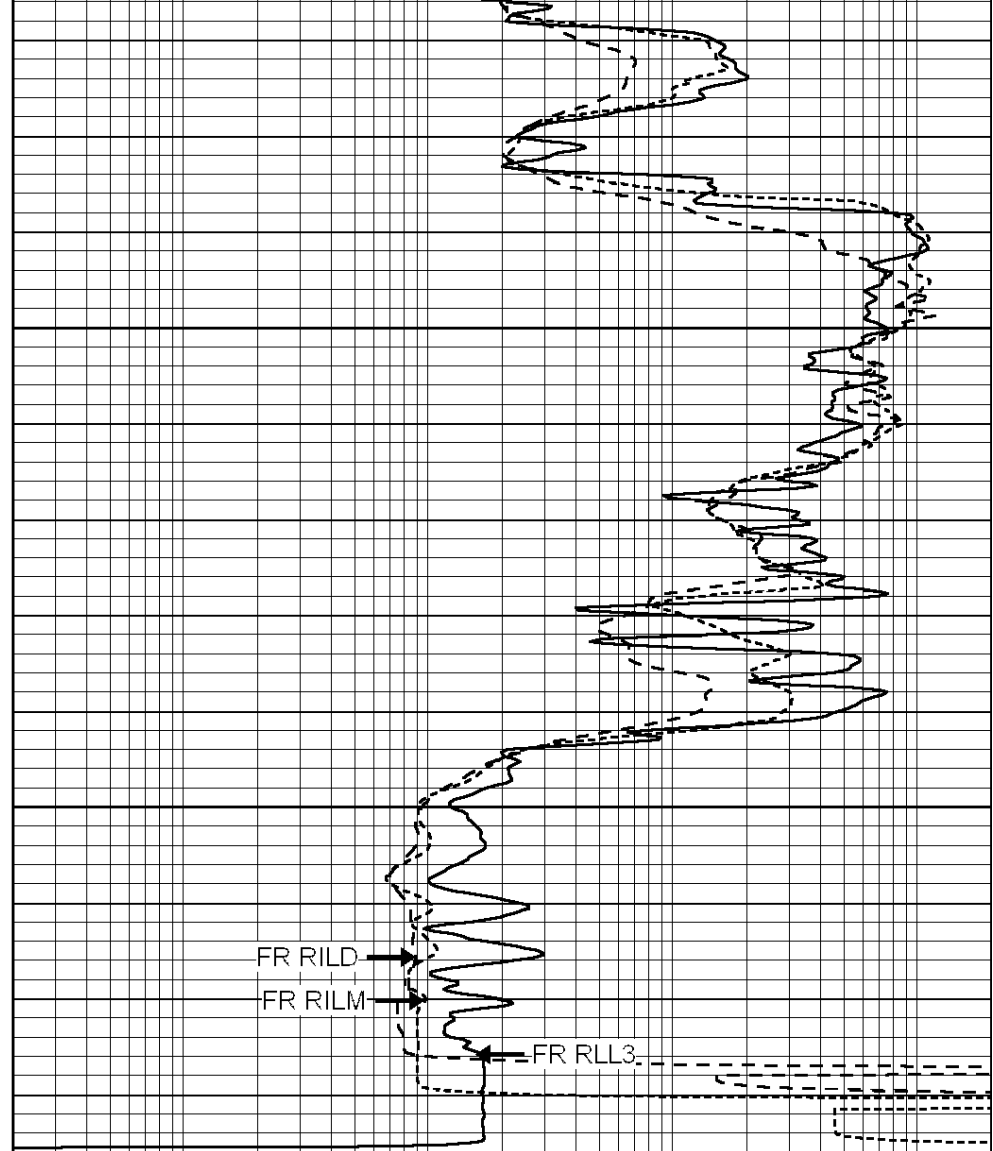
RxoRt





4900
4950
--- TD ---

0	GAMMA RAY (GAPI)	150
-100	SP (mV)	100
-250	RxoRt	50
0	MINMK	20



0.2	RLL3 (Ohm-m)	2000
0.2	DEEP INDUCTION (Ohm-m)	2000
0.2	MEDIUM INDUCTION (Ohm-m)	2000



SUPERIOR
Hays,
Kansas

REPEAT SECTION

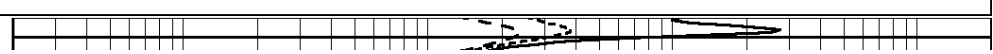
Database File: 009569ddn.db
 Dataset Pathname: pass2.A
 Presentation Format: dil
 Dataset Creation: Tue Aug 07 07:23:10 2012
 Charted by: Depth in Feet scaled 1:240

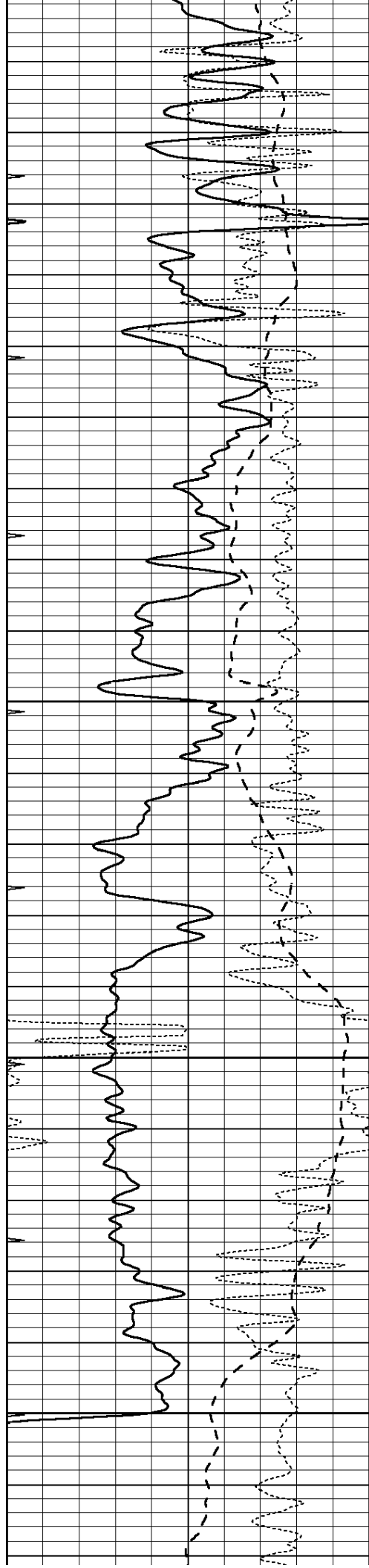
0	GAMMA RAY (GAPI)	150
-100	SP (mV)	100
-250	RxoRt	50
0	MINMK	20

0.2	RLL3 (Ohm-m)	2000
0.2	DEEP INDUCTION (Ohm-m)	2000
0.2	MEDIUM INDUCTION (Ohm-m)	2000



4750



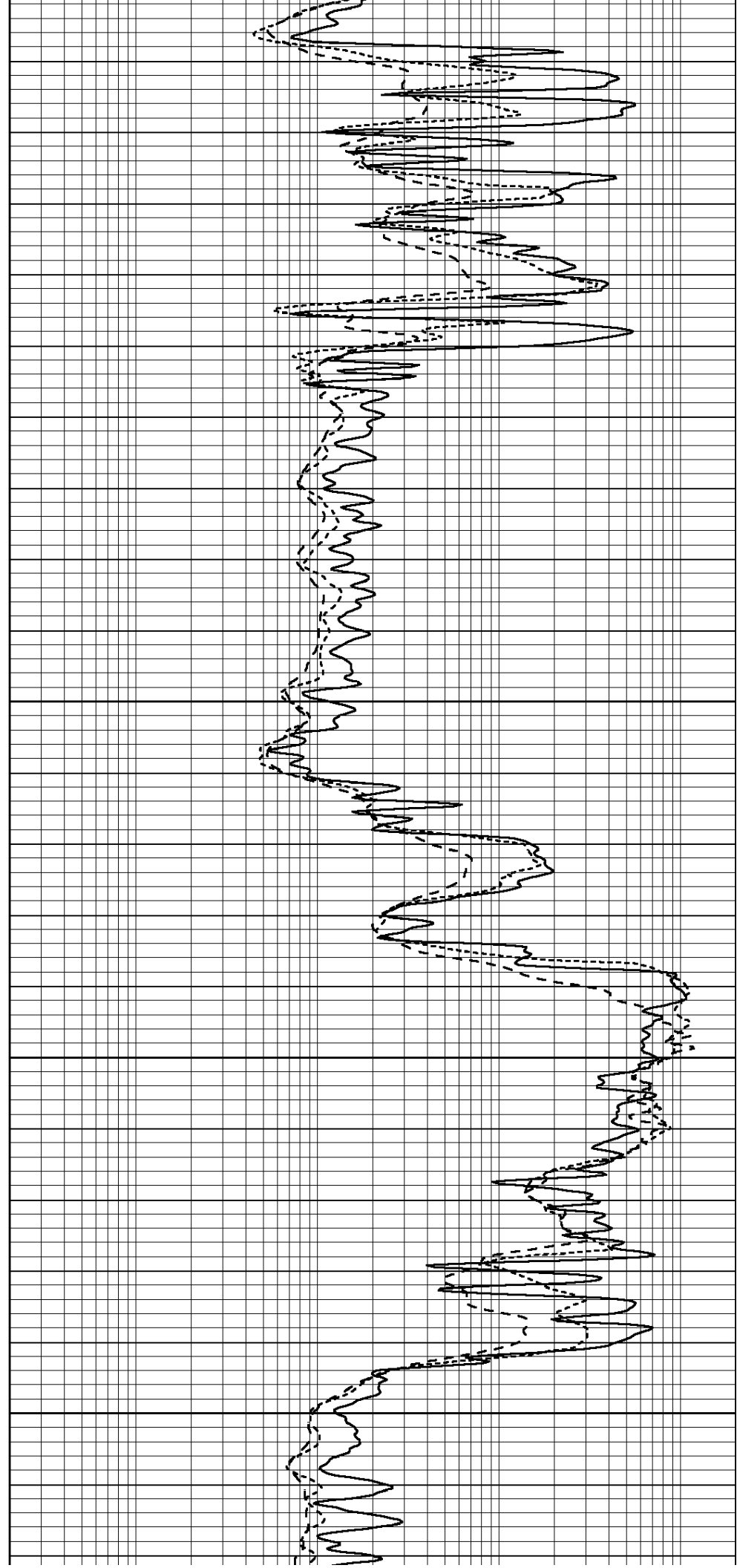


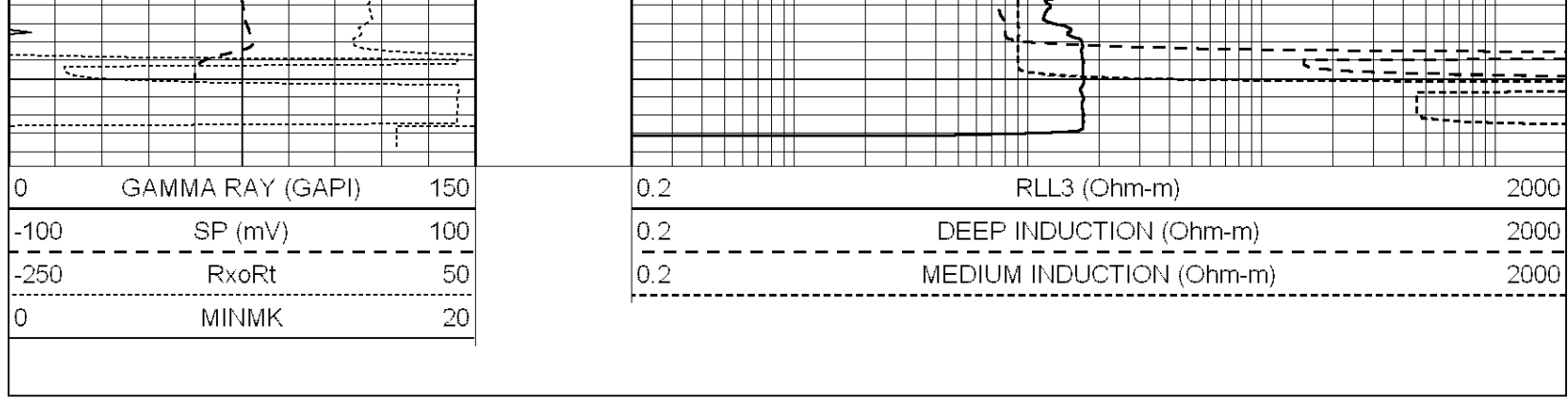
4800

4850

4900

4950





Calibration Report

Database File: 009569ddn.db
 Dataset Pathname: pass3.1A
 Dataset Creation: Tue Aug 07 07:17:26 2012

Dual Induction Calibration Report

Serial-Model: DIL5-GEAR
 Performed: Tue Aug 07 05:58:49 2012

Loop:	Readings			References			Results	
	Air	Loop		Air	Loop		m	b
Deep	0.004	0.654	V	0.000	400.000	mmho/m	500.000	-9.000
Medium	-0.005	0.737	V	0.000	462.500	mmho/m	530.000	-12.000
Internal:	Zero	Cal		Zero	Cal		m	b
Deep	0.006	0.655	V	0.000	400.000	mmho/m	615.668	-3.483
Medium	0.010	0.747	V	0.000	462.500	mmho/m	627.607	-6.064

Compensated Density Calibration Report

Serial-Model: GEAR2-GEARHART
 Source / Verifier: 147 / 147
 Master Calibration Performed: Tue Aug 07 06:04:30 2012

Master Calibration

	Density		Far Detector	Near Detector	
Magnesium	1.710	g/cc	1203.63	642.89	cps
Aluminum	2.600	g/cc	267.51	439.63	cps
Spine Angle = 75.82			Density/Spine Ratio = 0.574		
	Size		Reading		
Small Ring	8.00	in	4.55	V	
Large Ring	14.00	in	6.86	V	

Compensated Neutron Calibration Report

Serial Number: NUE_2I
 Tool Model: G

CALIBRATION

Detector	Readings		Target		Normalization
Short Space	1.00	cps	1.00	cps	1.0000
Long Space	1.00	cps	1.00	cps	1.0000

Gamma Ray Calibration Report

Serial Number:	GR2	
Tool Model:	OPEN	
Performed:	Tue Aug 07 05:16:34 2012	
Calibrator Value:	200.0	GAPI
Background Reading:	0.0	cps
Calibrator Reading:	740.0	cps
Sensitivity:	0.7500	GAPI/cps