

**SUPERIOR
Hays,
Kansas**

**MICRO
LOG**

Company NORSTAR PETROLEUM, INC.
Well BARRETT FAMILY TRUST #1-35
Field
County THOMAS State KANSAS

Location: API #: 15-193-20858
335' FSL & 2058' FEL
SEC 35 TWP 9S RGE 35W
Permanent Datum GROUND LEVEL Elevation 3328
Log Measured From KELLY BUSHING 5' A.G.L.
Drilling Measured From KELLY BUSHING
Other Services
CDL/CNL
DIL/SONIC
Elevation
K.B. 3333
D.F.
G.L. 3328

Date	8-7-12
Run Number	THREE
Depth Driller	4978
Depth Logger	4978
Bottom Logged Interval	4960
Top Log Interval	3700
Casing Driller	290
Casing Logger	290
Bit Size	7.875
Type Fluid in Hole	CHEMICAL MUD
Density / Viscosity	9.5 / 50
pH / Fluid Loss	10.0 / 12.0
Source of Sample	FLOWLINE
Rm @ Meas. Temp	0.48 @ 82F
Rmf @ Meas. Temp	0.36 @ 82F
Rmc @ Meas. Temp	0.58 @ 82F
Source of Rmf / Rmc	MEASURED
Rm @ BHT	.320 @ 124F
Time Circulation Stopped	3 HOURS
Time Logger on Bottom	5:15 A.M.
Maximum Recorded Temperature	124F
Equipment Number	860
Location	HAYS, KS.
Recorded By	RUPP
Witnessed By	BOB ELDER

<<< Fold Here >>>

All interpretations are opinions based on inferences from electrical or other measurements and we cannot and do not guarantee the accuracy or correctness of any interpretation, and we shall not, except in the case of gross or willful negligence on our part, be liable or responsible for any loss, costs, damages, or expenses incurred or sustained by anyone resulting from any interpretation made by any of our officers, agents or employees. These interpretations are also subject to our general terms and conditions set out in our current Price Schedule.

Comments

SUPERIOR WELL SERVICES
785-628-6395
THANK YOU FOR YOUR BUSINESS
DIRECTIONS: LEVANT & I-70 EXIT, 10S TO RD. "G", 1/2E, N & E INTO.



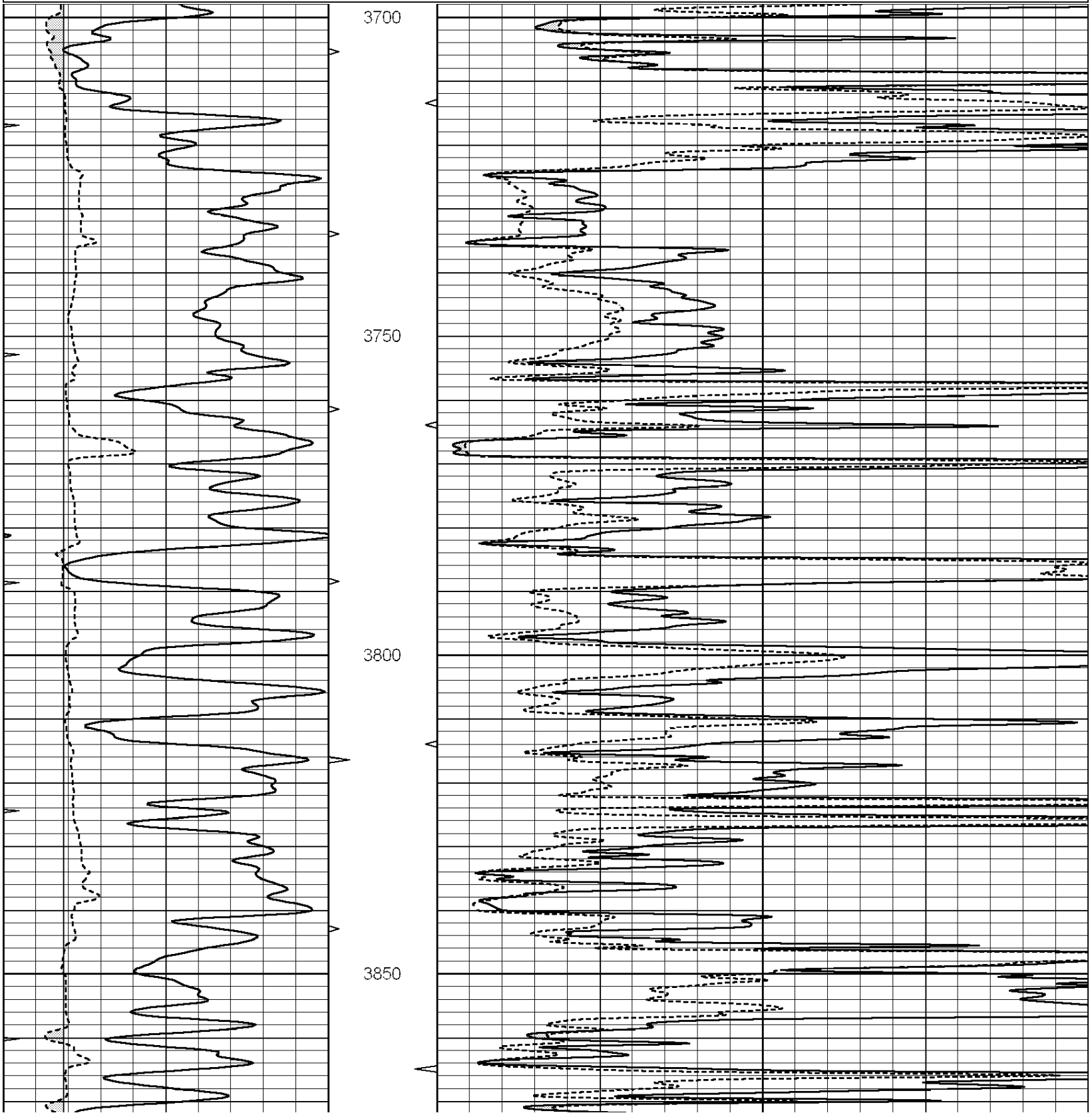
**SUPERIOR
Hays,
Kansas**

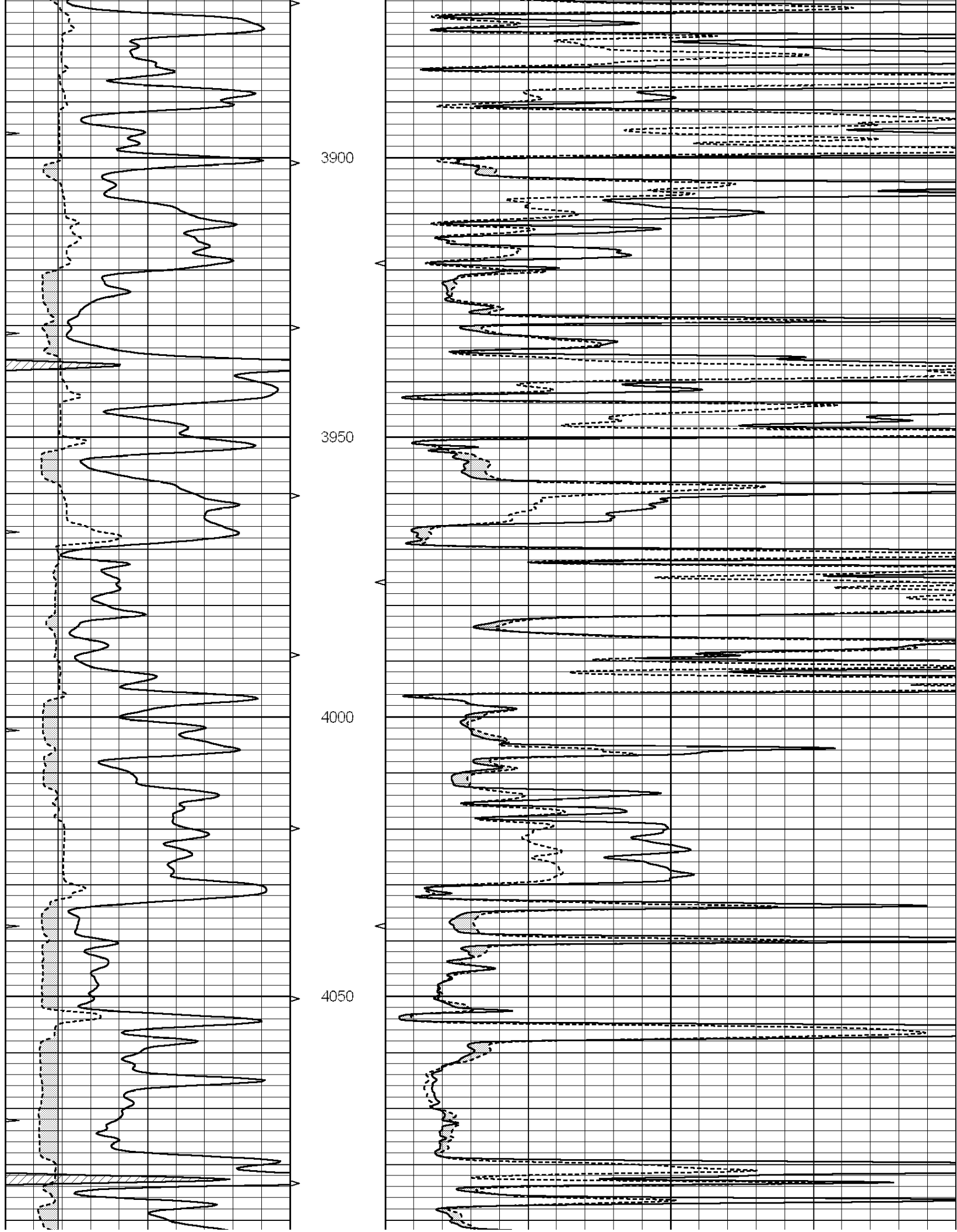
MAIN SECTION

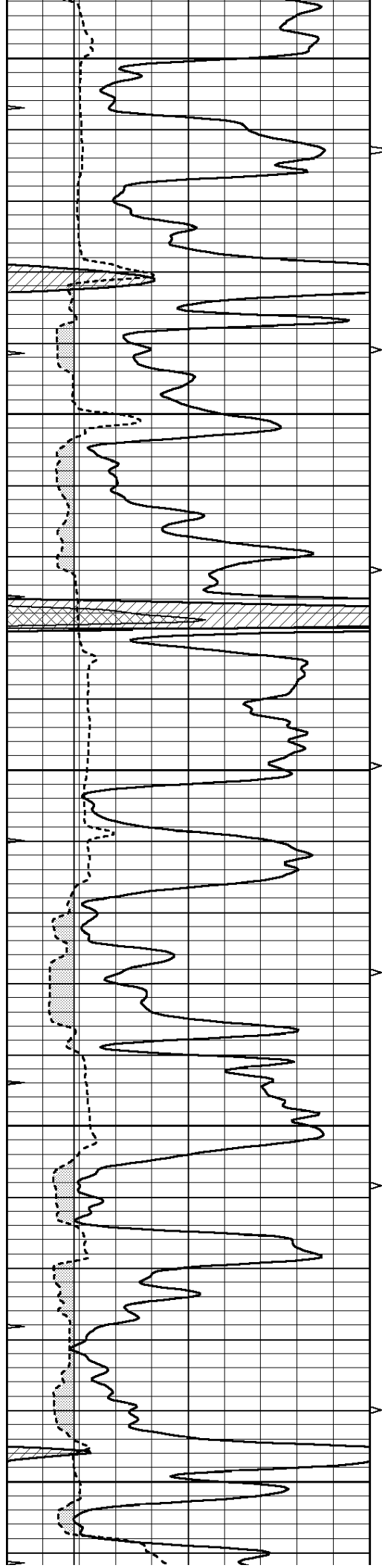
Database File: 009569ddn.db
 Dataset Pathname: pass8.1A
 Presentation Format: micro
 Dataset Creation: Tue Aug 07 11:44:05 2012
 Charted by: Depth in Feet scaled 1:240

0	GAMMA RAY (GAPI)	150
6	MELCAL (in)	16
0	MINMK	20

0	MEL1.5 (Ohm-m)	40
0	MEL2.0 (Ohm-m)	40







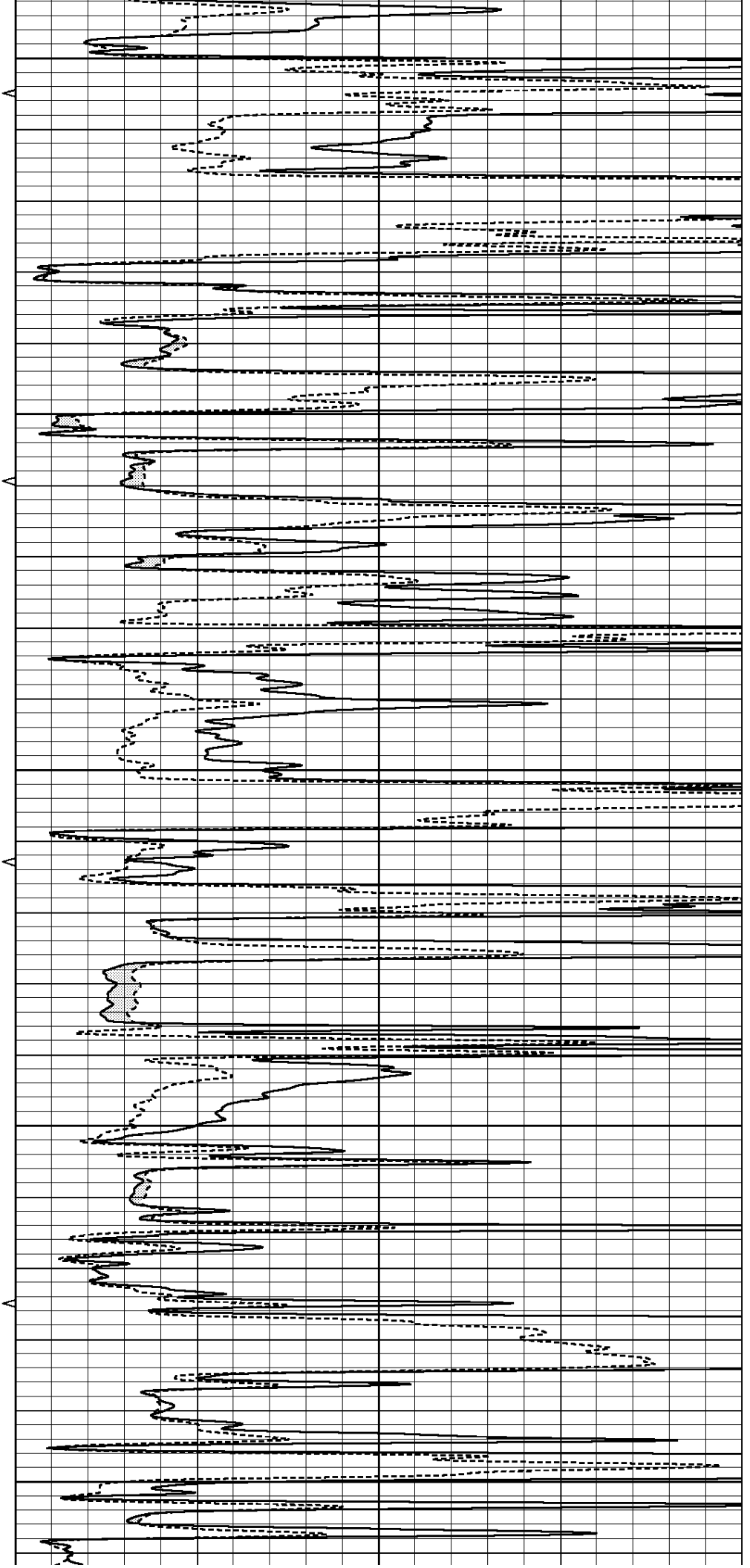
4100

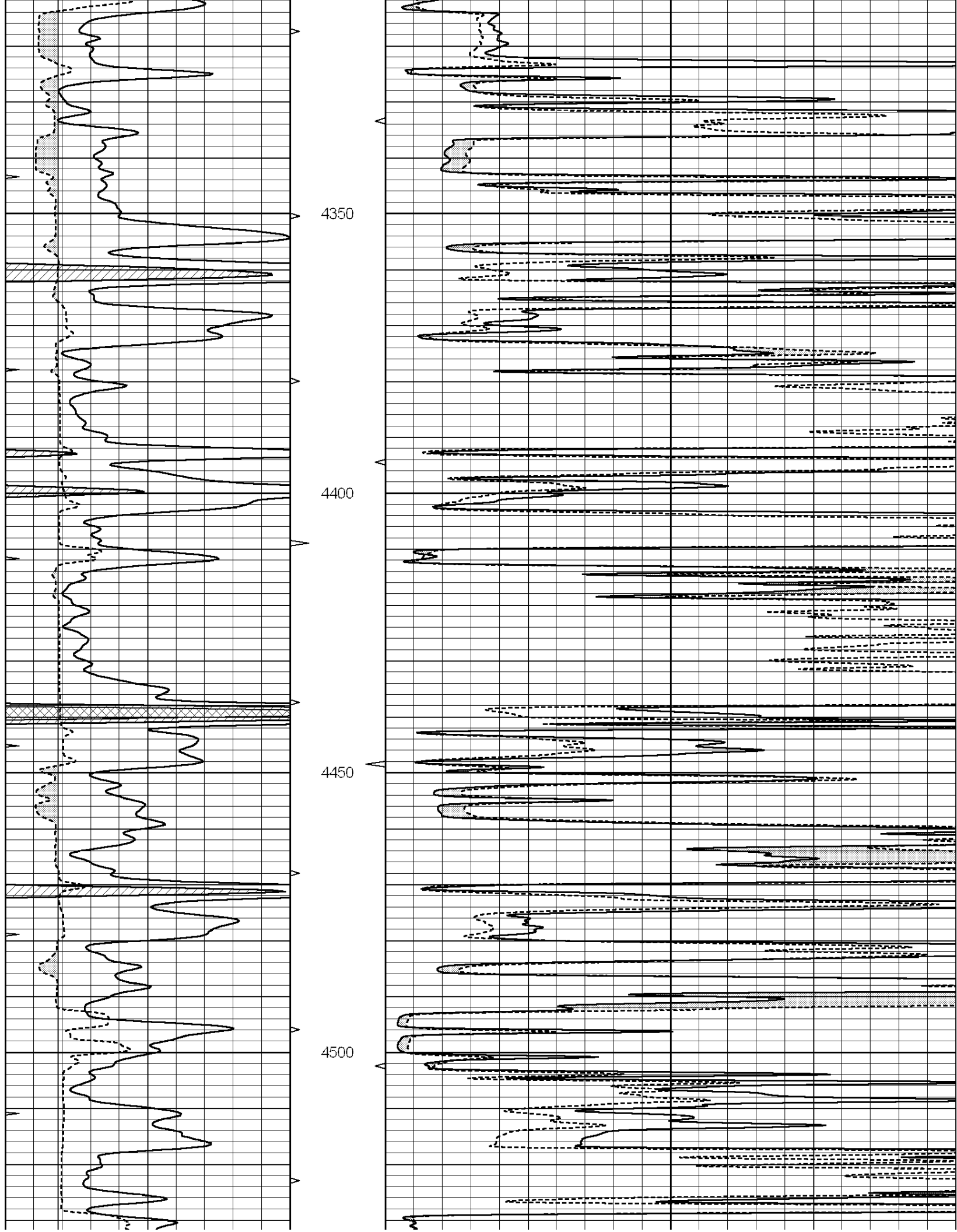
4150

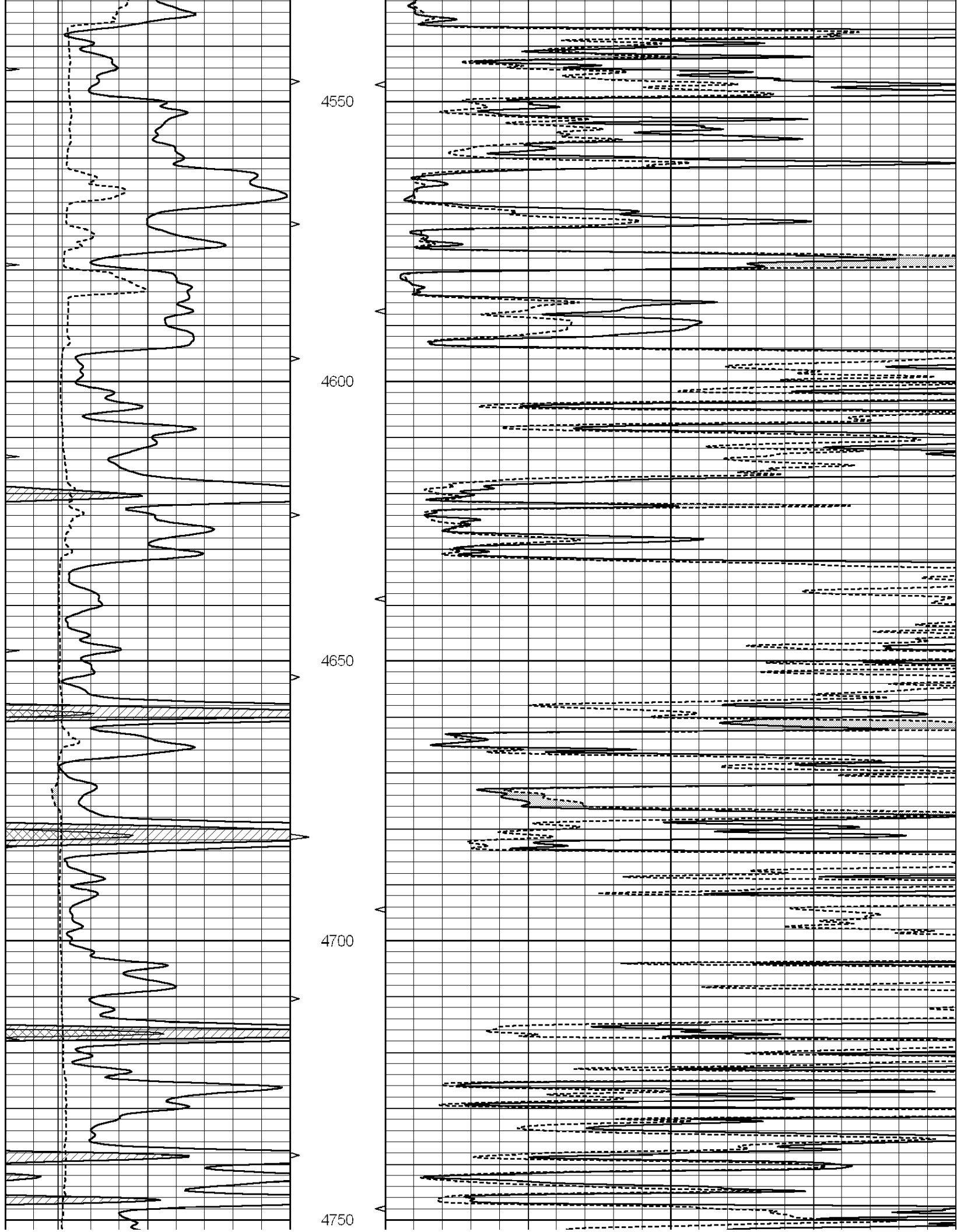
4200

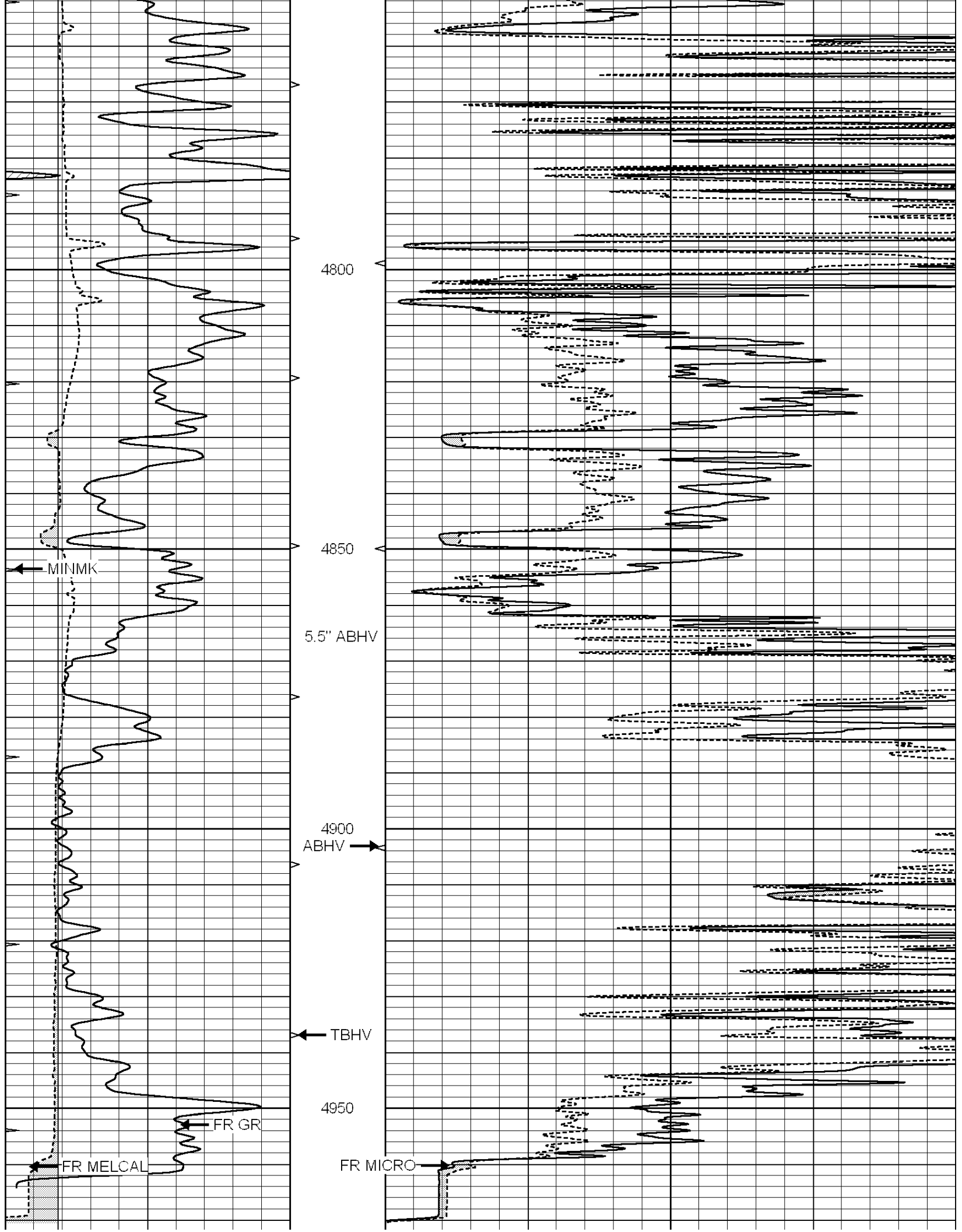
4250

4300









--- TD ---

0	GAMMA RAY (GAPI)	150
6	MELCAL (in)	16
0	MINMK	20

0	MEL1.5 (Ohm-m)	40
0	MEL2.0 (Ohm-m)	40



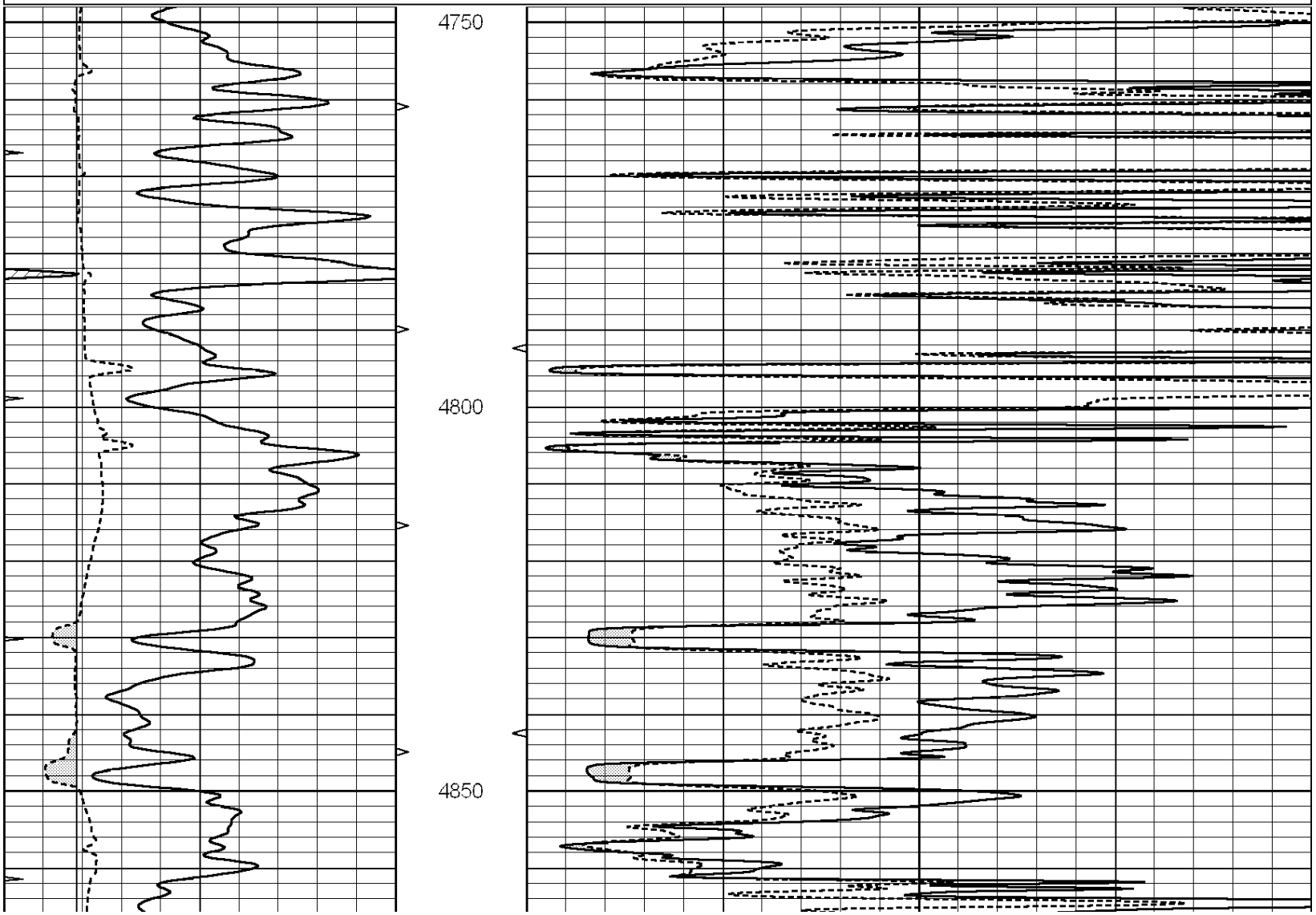
SUPERIOR
Hays,
Kansas

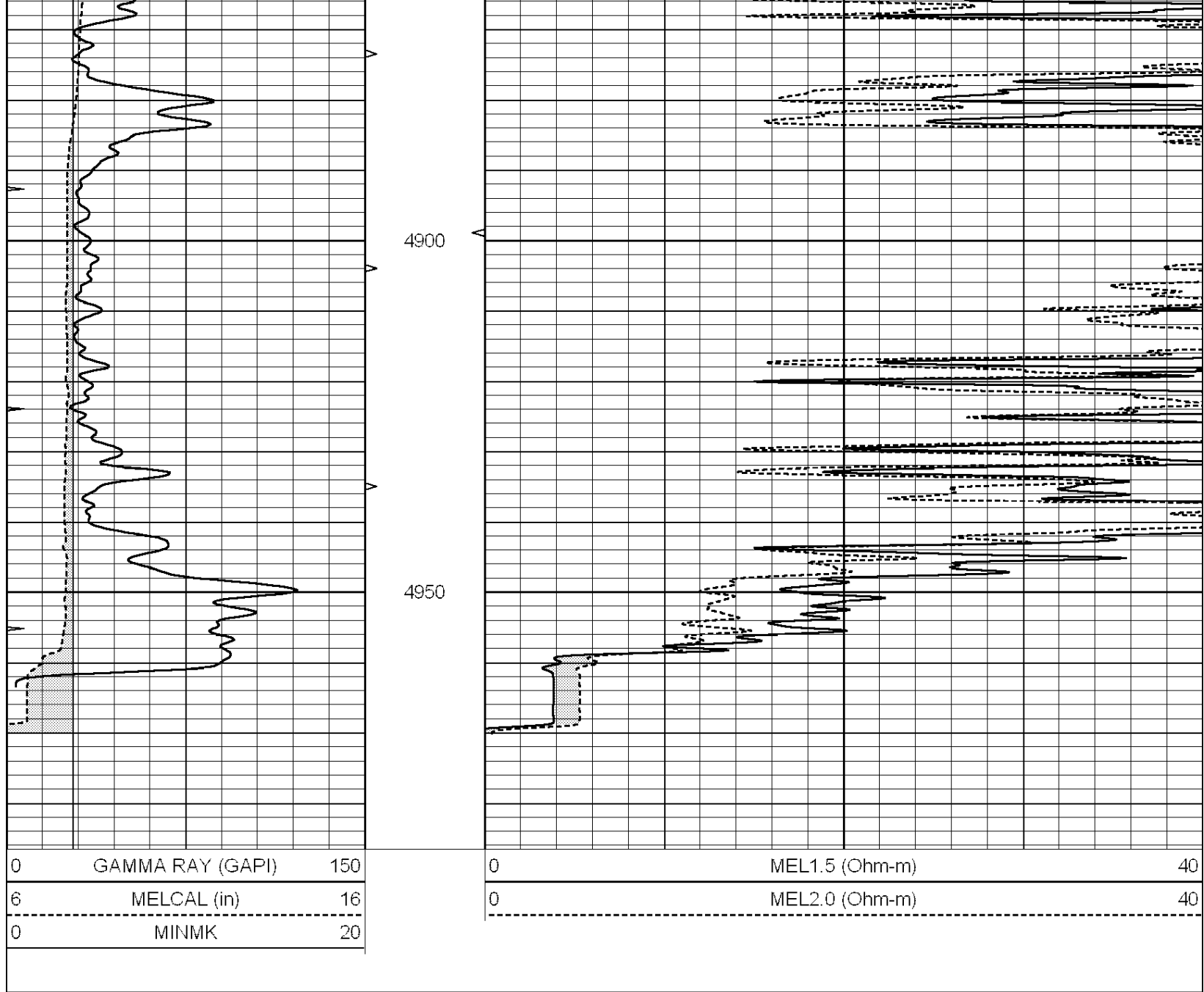
REPEAT SECTION

Database File: 009569ddn.db
 Dataset Pathname: pass7.1B
 Presentation Format: micro
 Dataset Creation: Tue Aug 07 10:08:09 2012 by Calc Open-Cased 090629
 Charted by: Depth in Feet scaled 1:240

0	GAMMA RAY (GAPI)	150
6	MELCAL (in)	16
0	MINMK	20

0	MEL1.5 (Ohm-m)	40
0	MEL2.0 (Ohm-m)	40





Calibration Report

Database File: 009569ddn.db
 Dataset Pathname: pass8.1A
 Dataset Creation: Tue Aug 07 11:44:05 2012

MICRO Calibration Report

Serial Number: MICRO4
 Tool Model: PROBE
 Performed: Tue Aug 07 11:09:54 2012

Caliper Calibration: Gain=1.230 Offset=0.899

References	Low Cal 7.600	High Cal 11.000
Readings	5.449	8.214

1.5" Calibration: Gain=47.000 Offset=-0.600

References	Low Cal 0.000	High Cal 20.000
Readings	0.009	1.541

2" Calibration: Gain=47.000 Offset=0.000

	Low Cal	High Cal
References	0.000	20.000
Readings	0.004	1.198

Gamma Ray Calibration Report

Serial Number: GR5
Tool Model: OPEN
Performed: Tue Aug 07 10:12:27 2012

Calibrator Value: 1.0 GAPI

Background Reading: 0.0 cps
Calibrator Reading: 1.0 cps

Sensitivity: 0.7800 GAPI/cps