

Company #3 Ash B
 Field Medicine Lodge--Boggs
 County Barber
 State Kansas

Company Charles N. Griffin
 Well #3 Ash B
 Field Medicine Lodge--Boggs
 County Barber State Kansas

Location: 340' FNL & 70' FWL
 API #: 15-007-23835
 Other Services
 Permanent Datum Ground Level Elevation 1615'
 Log Measured From KB 8' AGL
 Drilling Measured From KB
 Elevation
 K.B. 1623'
 D.F. 1621'
 G.L. 1623'

| | | | | |
|------------------------|-----------------|--------|---------------|--------|
| Date | 3-9-12 | | | |
| Run Number | One | | | |
| Depth Driller | 4974' | | | |
| Depth Logger | 4936' | | | |
| Bottom Logged Interval | 4936' | | | |
| Top Log Interval | 3600' | | | |
| Open Hole Size | 7 7/8" | | | |
| Type Fluid | Water | | | |
| Density / Viscosity | //// | | | |
| Max. Recorded Temp. | //// | | | |
| Estimated Cement Top | 3718' | | | |
| Time Well Ready | Portable Mast | | | |
| Time Logger on Bottom | 10:30 AM | | | |
| Equipment Number | T745 | | | |
| Location | Hays, KS | | | |
| Recorded By | Justin LaBarge | | | |
| Witnessed By | Mr. JR Griffin | | | |
| Run Number | Borehole Record | | Tubing Record | |
| Bit | From | To | Size | Weight |
| | | | | From |
| | | | | To |
| Casing Record | Size | Wgt/Ft | Top | Bottom |
| Surface String | 8 5/8" | | 0' | 265' |
| Prot. String | | | | |
| Production String | | | | |
| Liner | | | | |

<<< Fold Here >>>

All interpretations are opinions based on inferences from electrical or other measurements and we cannot and do not guarantee the accuracy or correctness of any interpretation, and we shall not, except in the case of gross or willful negligence on our part, be liable or responsible for any loss, costs, damages, or expenses incurred or sustained by anyone resulting from any interpretation made by any of our officers, agents or employees. These interpretations are also subject to our general terms and conditions set out in our current Price Schedule.

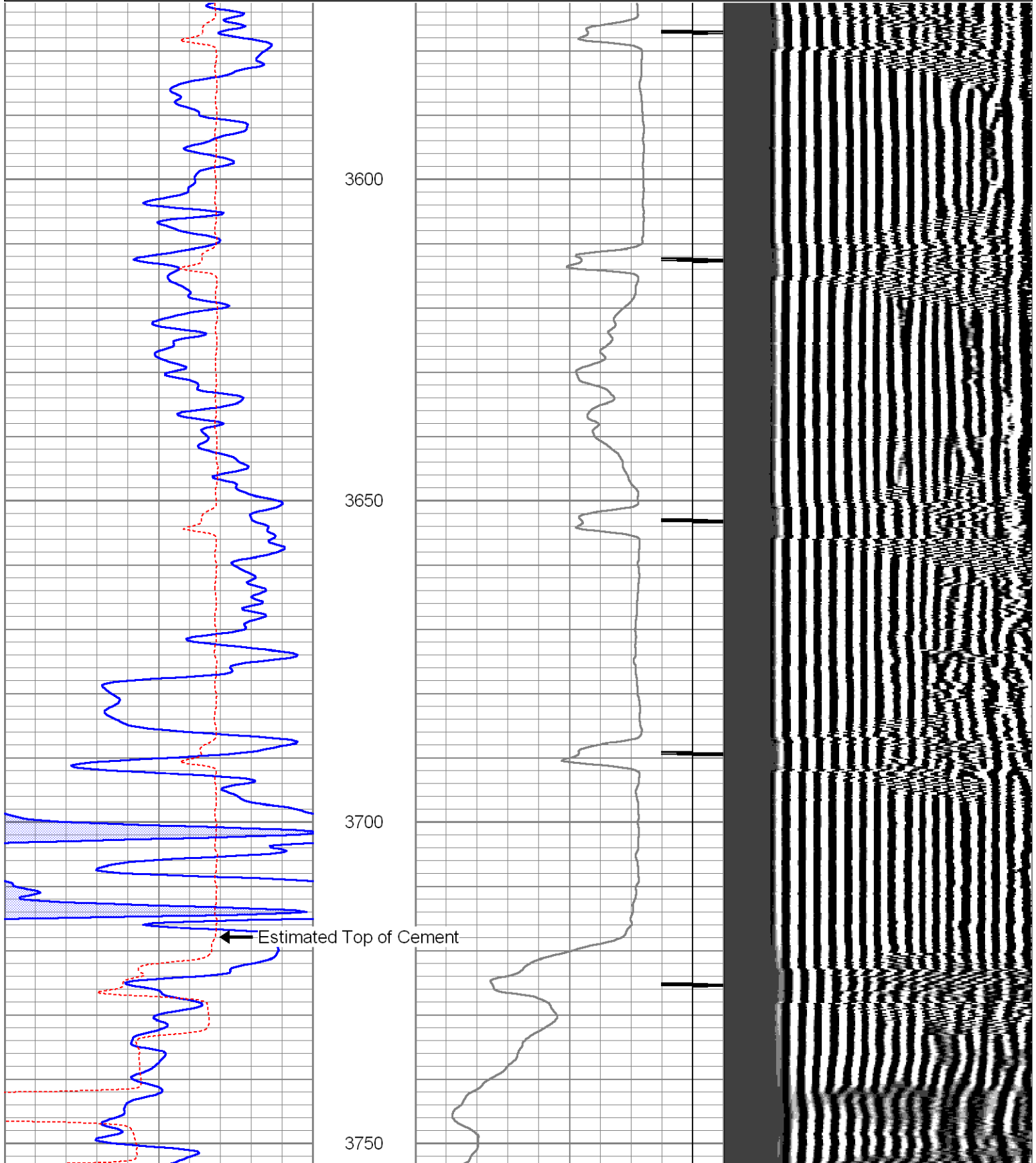
Comments

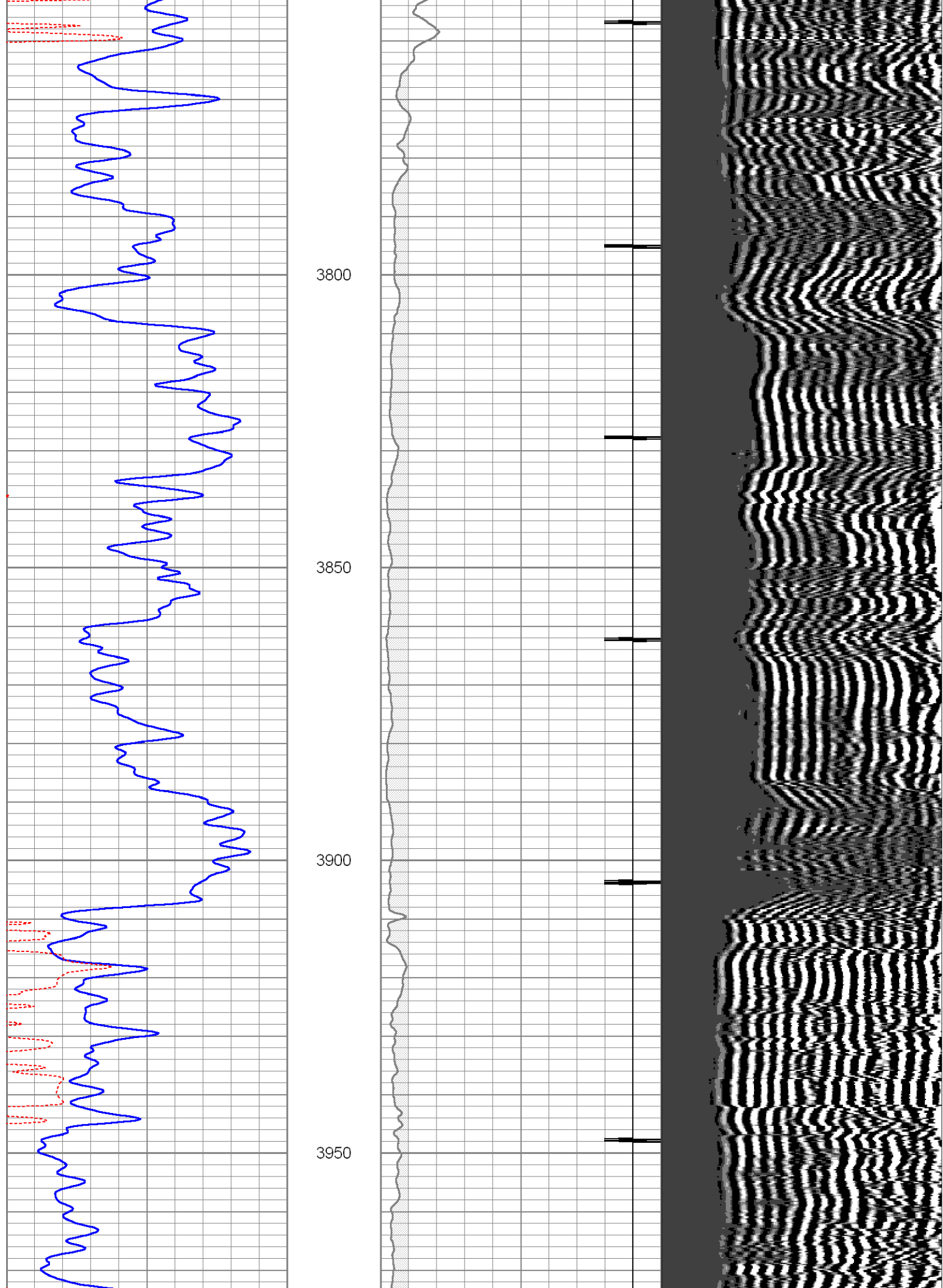
Marker Joint (4458'--4494')

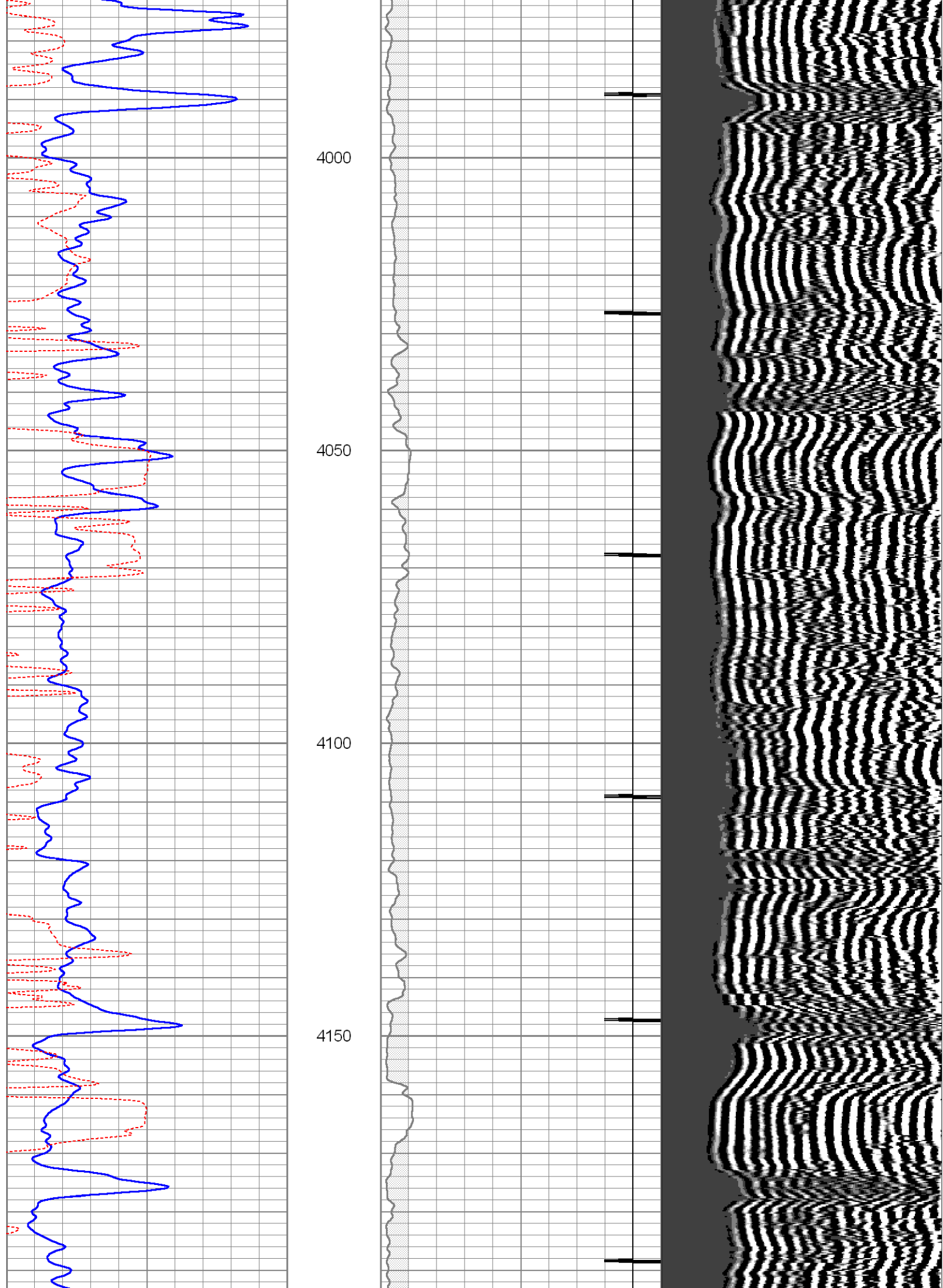
Thank You For Using The Perforators LLC
 Hays, KS (785-621-4604)

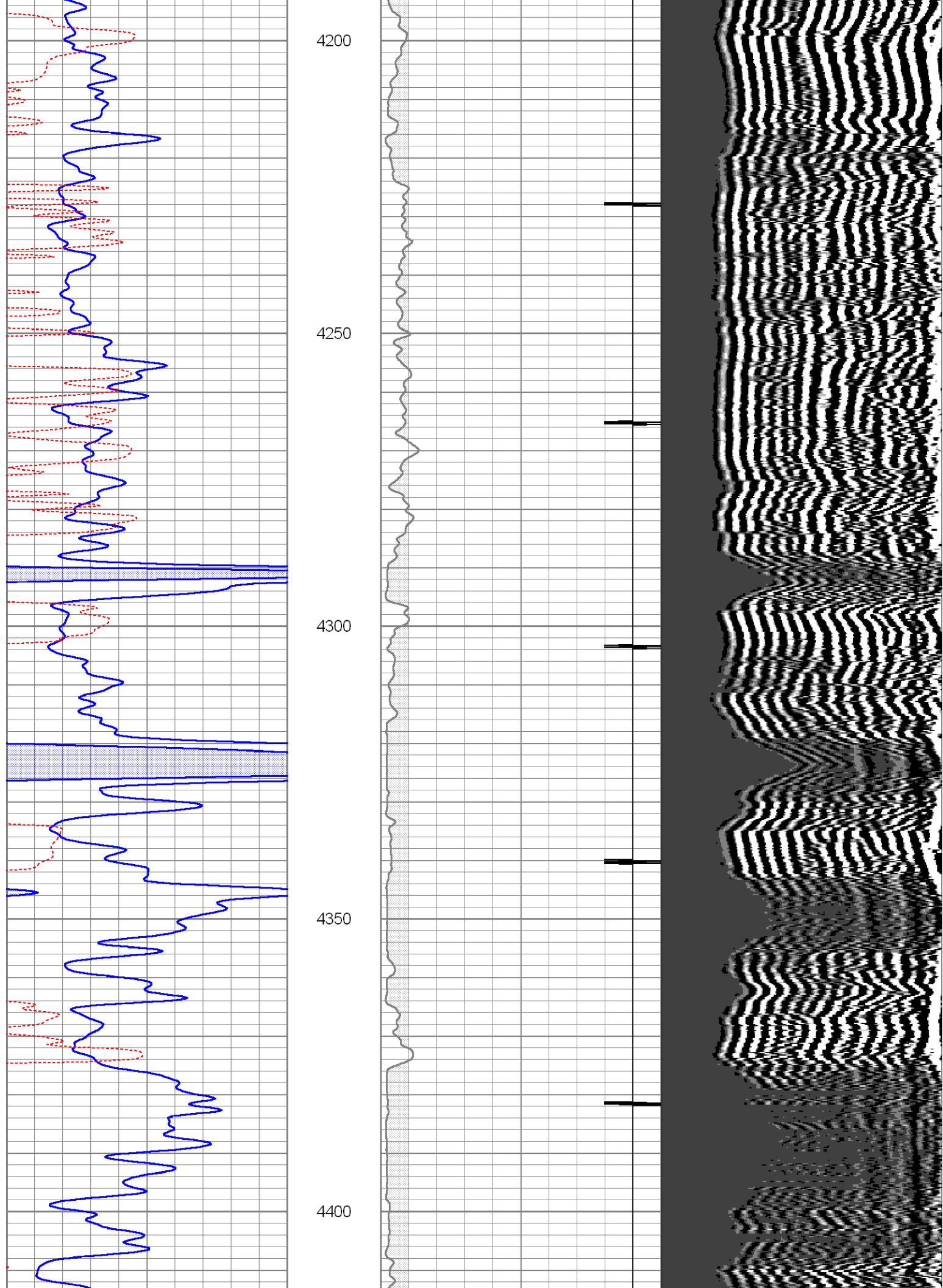
Database File: #3ashbcbl.db
 Dataset Pathname: pass4
 Presentation Format: cbl
 Dataset Creation: Fri Mar 09 10:57:32 2012 by Log Std Casedhole 10121
 Charted by: Depth in Feet scaled 1:240

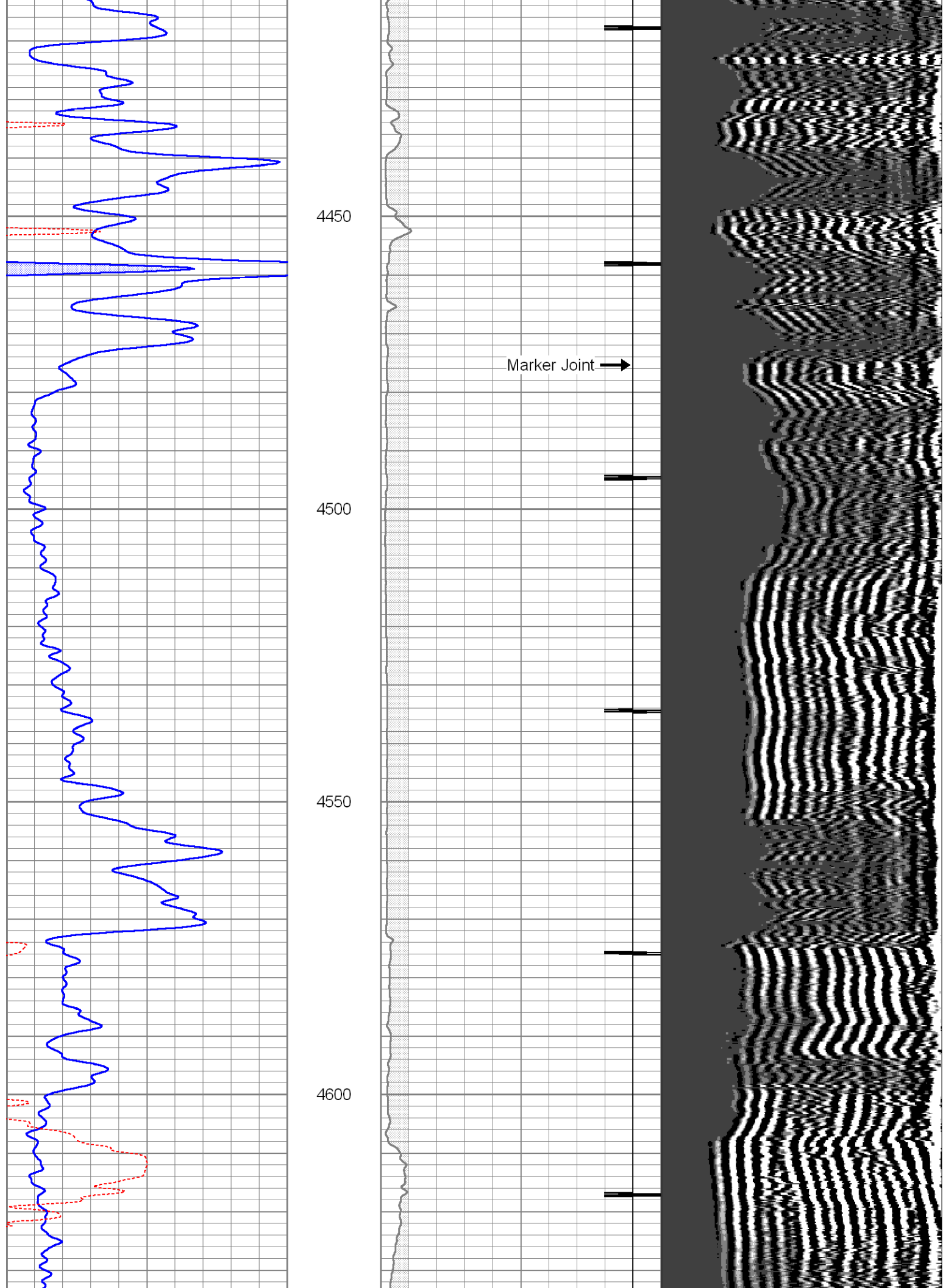
| | | | | | | | | |
|-----|--------------|-----|----|-----------|-----|-----|-----|------|
| 0 | GR (GAPI) | 150 | 18 | CCL | -2 | 200 | VDL | 1200 |
| 150 | GR (GAPI) | 300 | 0 | AMP3 (mV) | 100 | | | |
| 420 | TT3FT (usec) | 220 | | | | | | |

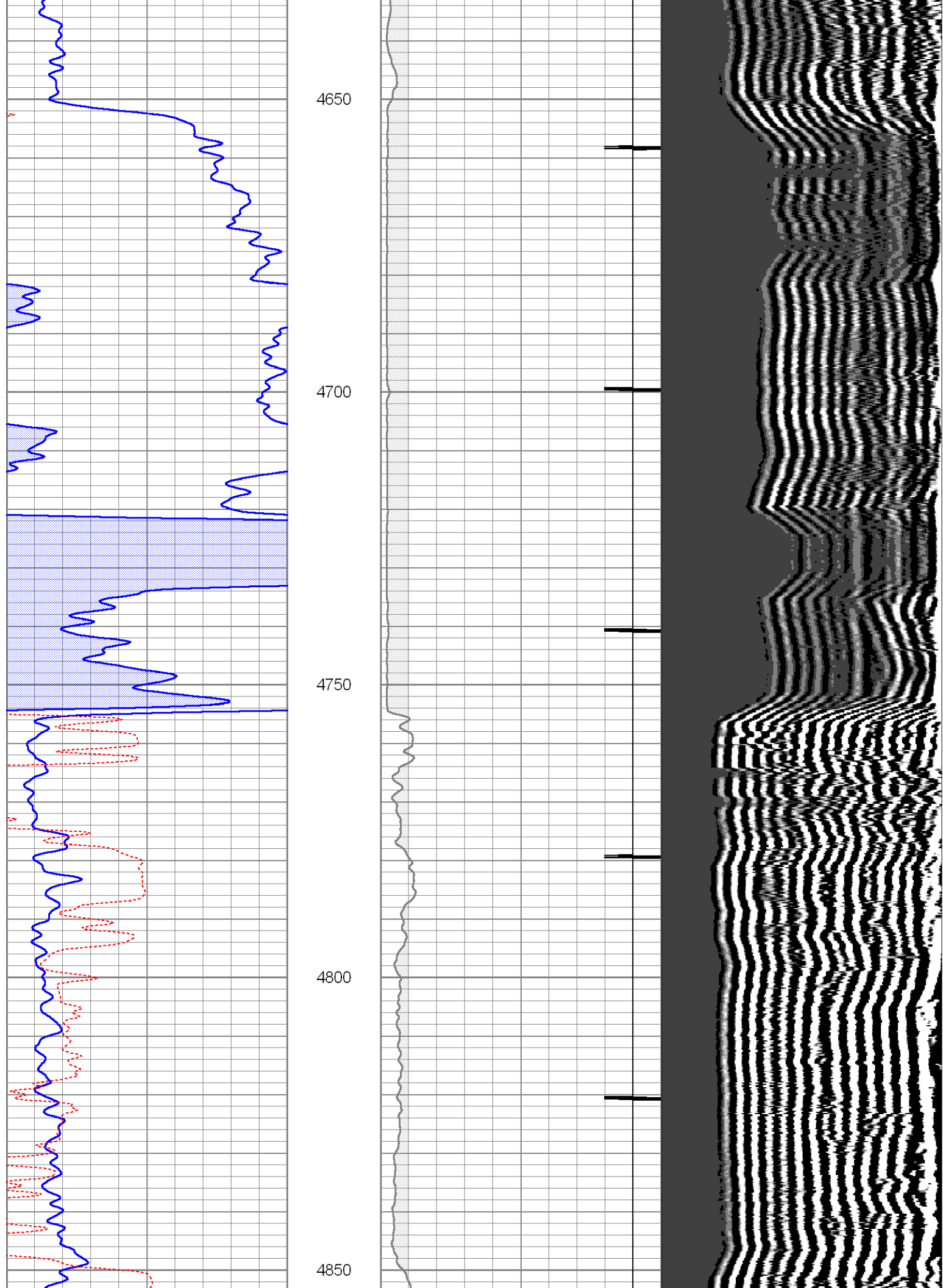


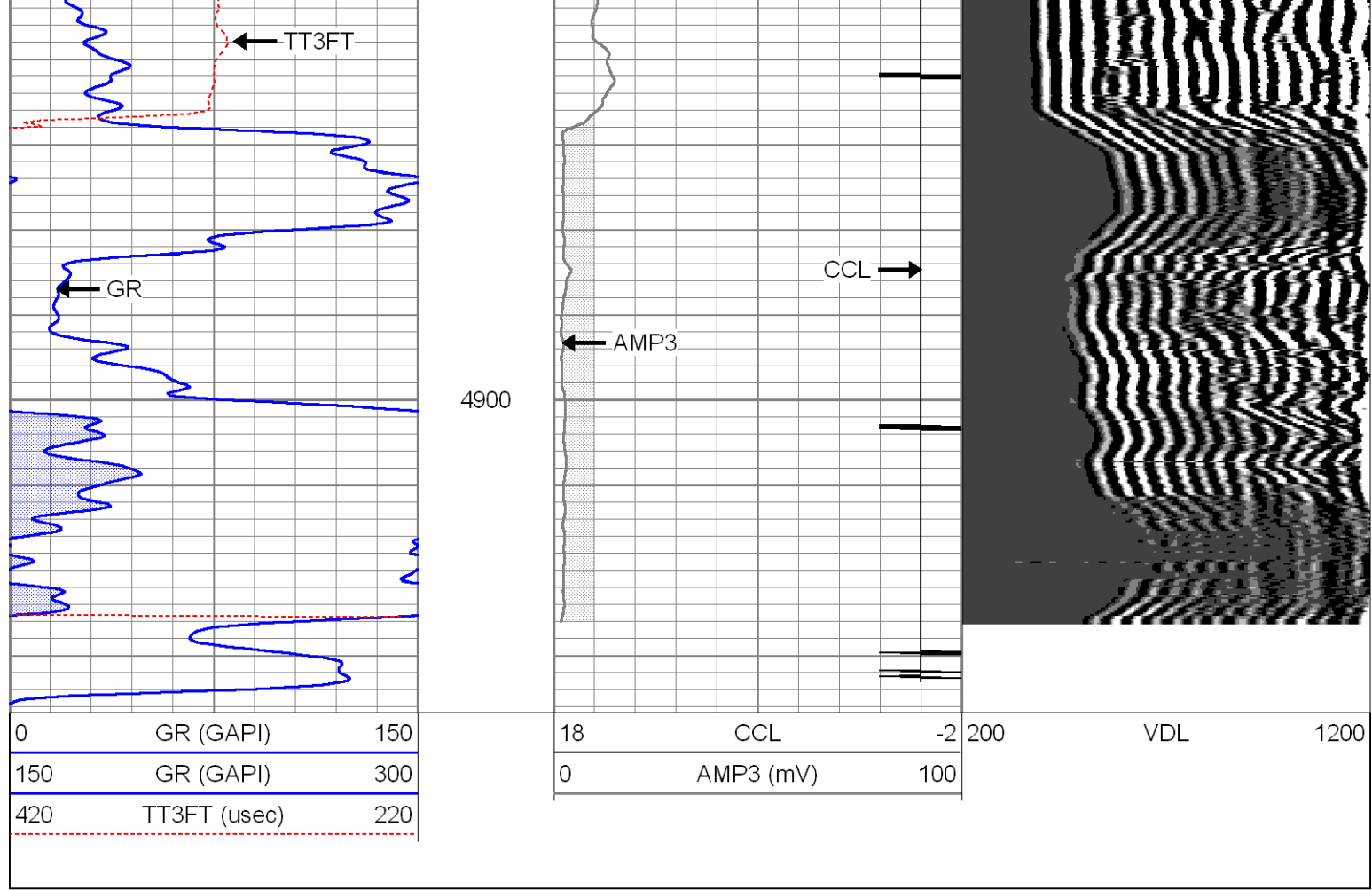






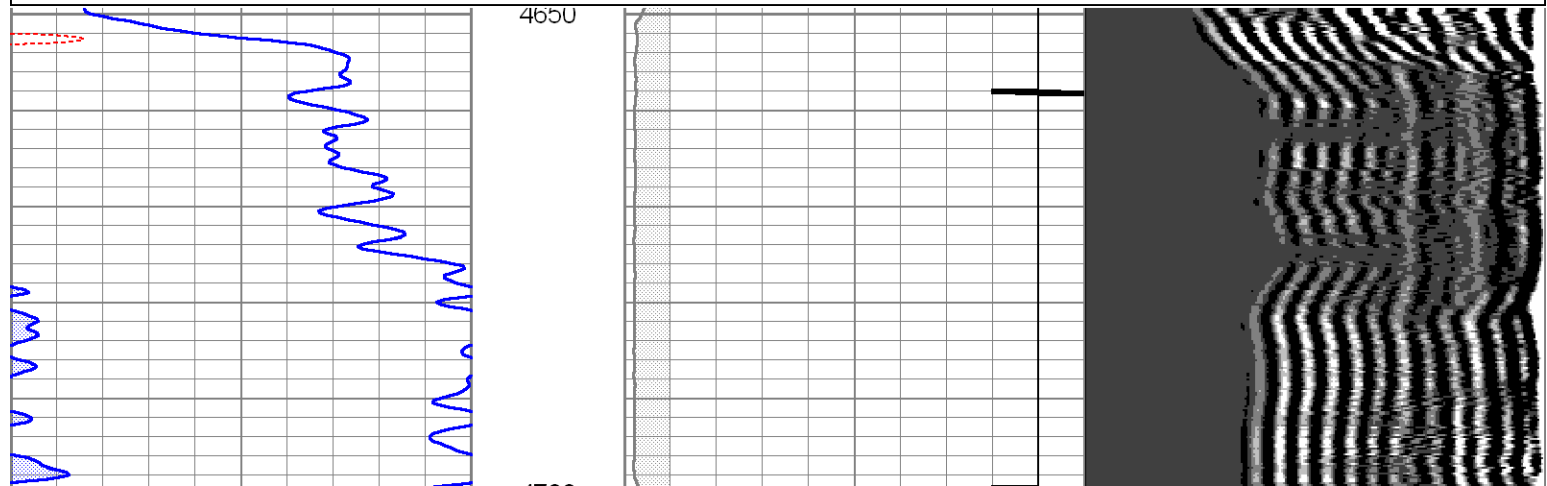
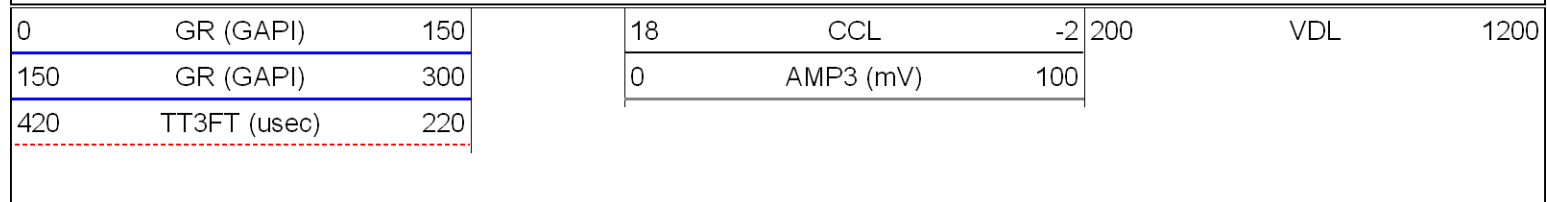


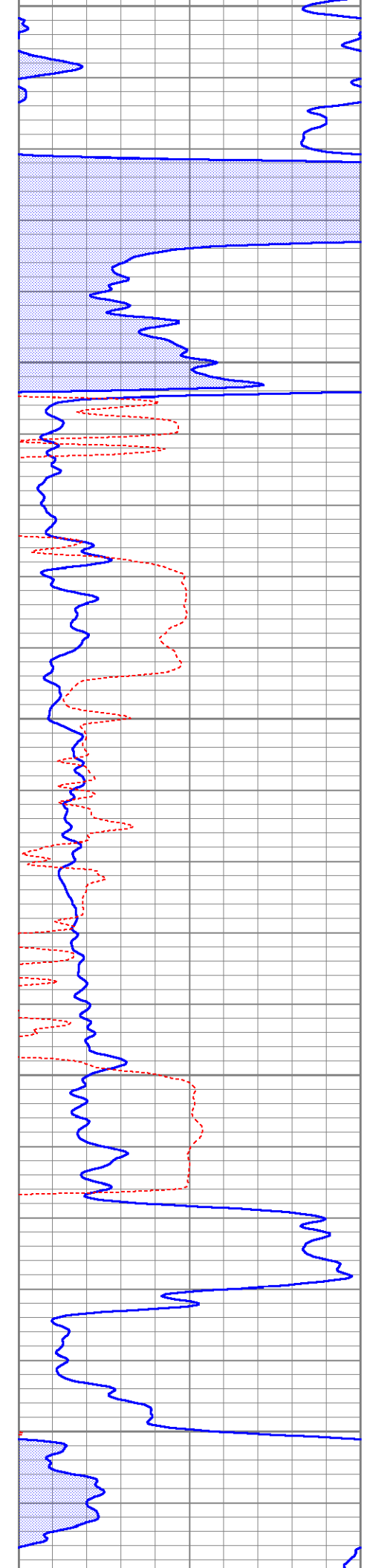




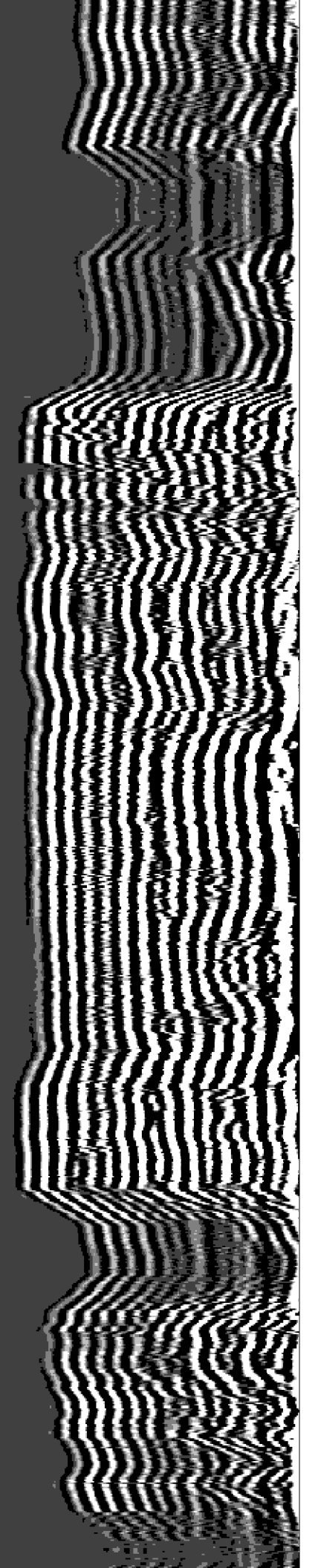
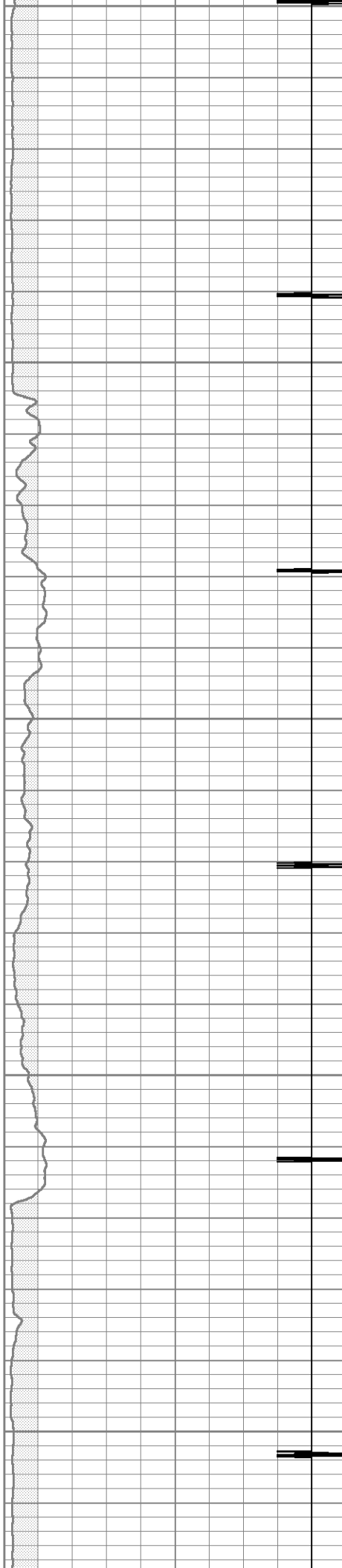
Repeat Section

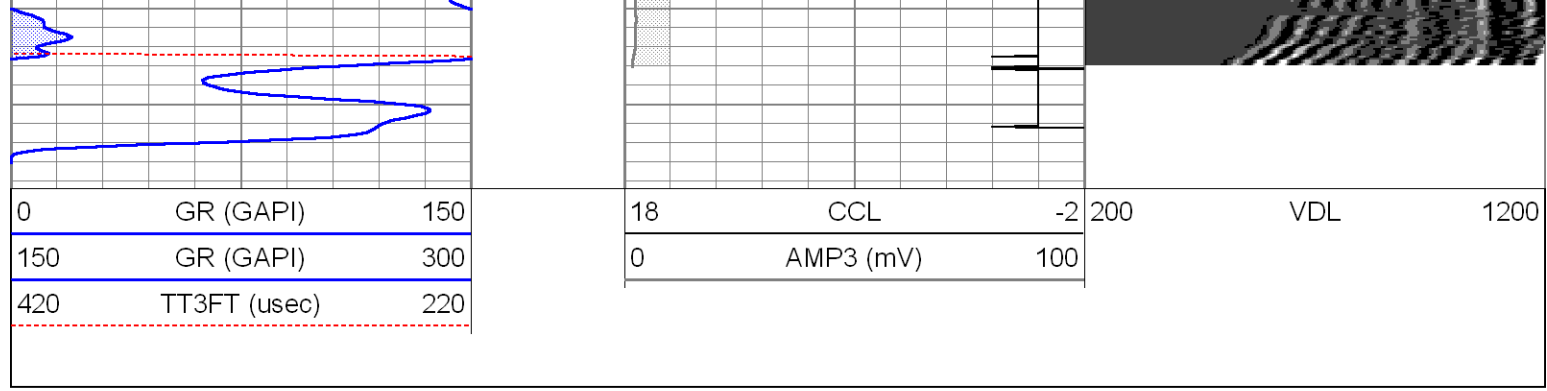
Database File: #3ashbcbl.db
 Dataset Pathname: pass3
 Presentation Format: cbl
 Dataset Creation: Fri Mar 09 10:47:50 2012 by Log Std Casedhole 10121
 Charted by: Depth in Feet scaled 1:240





4700
4750
4800
4850
4900





Calibration Report

Database File: #3ashbcbl.db
 Dataset Pathname: pass4
 Dataset Creation: Fri Mar 09 10:57:32 2012 by Log Std Casedhole 10121

Gamma Ray Calibration Report

Serial Number: 080224
 Tool Model: Probe1
 Performed: Fri Dec 24 07:37:22 2010

Calibrator Value: 200.0 GAPI
 Background Reading: 15.0 cps
 Calibrator Reading: 222.7 cps

Sensitivity: 0.9629 GAPI/cps

Cement Bond Log Calibration Report

Serial Number: 080201
 Tool Model: DigitalCBL
 Performed: Mon Nov 14 09:56:12 2011

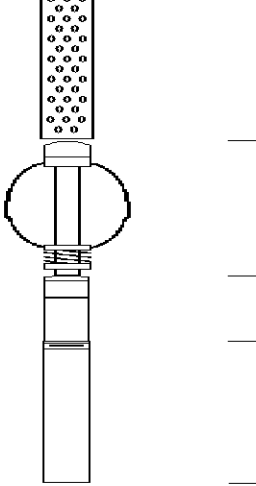
Depth: 2603.51 ft
 Casing Diameter: 5.5 in

3' Spacing 5' Spacing

Signal Zero: 2 0 mV
 Calibrated Amplitude: 71.921 71.921 mV
 Reading at Signal Zero: 0.0029541 0.00244141 V
 Reading in Free Pipe: 1.23 1.21655 V

Gain: 56.9832 59.2376
 Offset: 1.83167 -0.144623

| Sensor | Offset (ft) | Schematic | Description | Len (ft) | OD (in) | Wt (lb) |
|--------|-------------|-----------|---|----------|---------|---------|
| | | | sdschd | 0.75 | 1.44 | 3.00 |
| | | | 275 2 3/4" Centralizer | 2.94 | 2.75 | 10.00 |
| WVF3 | 11.69 | | Probedig-DigitalCBL (080201) 2 3/4 Bond Tool | 8.77 | 2.75 | 92.00 |
| WVF5 | 10.69 | | | | | |

| | | | | | | | |
|-----|------|--|---|---------------------------|------|------|-------|
| | | |  | | | | |
| CCL | 3.67 | | | 275 2 3/4" Centralizer | 2.94 | 2.75 | 10.00 |
| | | | | CCL-Probe (080224) | 1.42 | 2.75 | 20.00 |
| GR | 2.30 | | | GR-Probe1 (080224) | 3.08 | 2.75 | 40.00 |

Dataset: #3ashbcbl.db: field/well/run1/pass4
 Total Length: 19.89 ft
 Total Weight: 175.00 lb
 O.D. 2.75 in