

# LOG-TECH



DIGITAL LOG

(785) 625-3858

## Dual Induction Log

15-147-20,675-00-00

API No.

Company **Bach Oil Production**

Well **Billy #1**

Field **Wildcat**

County **Phillips** State

**Kansas**

Location **NW SE SE SW  
400' FSL / 2190' FWL**

Sec: **34**

Twp: **1S**

Rge: **19W**

Permanent Datum **Ground Level** Elevation **2221**

Log Measured From **Kelly Bushing** 5 Ft. Above Perm. Datum

Other Services  
CNL/CDL  
MEL

Drilling Measured From **Kelly Bushing**

Elevation  
K.B. 2226  
D.F. G.L. 2221

Date **5/16/2012**

Run Number **One**

Depth Driller **3675**

Depth Logger **3674**

Bottom Logged Interval **3673**

Top Log Interval **200**

Casing Driller **8.625 @ 224**

Casing Logger **224**

Bit Size **7.875**

Type Fluid in Hole **Chemical**

Salinity, ppm CL **1000**

Density / Viscosity **9.0** **54**

pH / Fluid Loss **10.5** **8.0**

Source of Sample **Flowline**

Rm @ Meas. Temp **1.00 @ 81**

Rmf @ Meas. Temp **0.75 @ 81**

Rmc @ Meas. Temp **1.35 @ 81**

Source of Rmf / Rmc **Charts**

Rm @ BHT **0.72 @ 113**

Operating Rig Time **3 Hours**

Max Rec. Temp. F **113**

Equipment Number **15**

Location **Hays**

Recorded By **R. Barnhart**

Witnessed By **Bob Peterson**

<<< Fold Here >>>

All interpretations are opinions based on inferences from electrical or other measurements and we cannot and do not guarantee the accuracy or correctness of any interpretation, and we shall not, except in the case of gross or willful negligence on our part, be liable or responsible for any loss, costs, damages, or expenses incurred or sustained by anyone resulting from any interpretation made by any of our officers, agents or employees. These interpretations are also subject to our general terms and conditions set out in our current Price Schedule.

### Comments

Thank you for using Log-Tech, Inc.  
(785) 625-3858

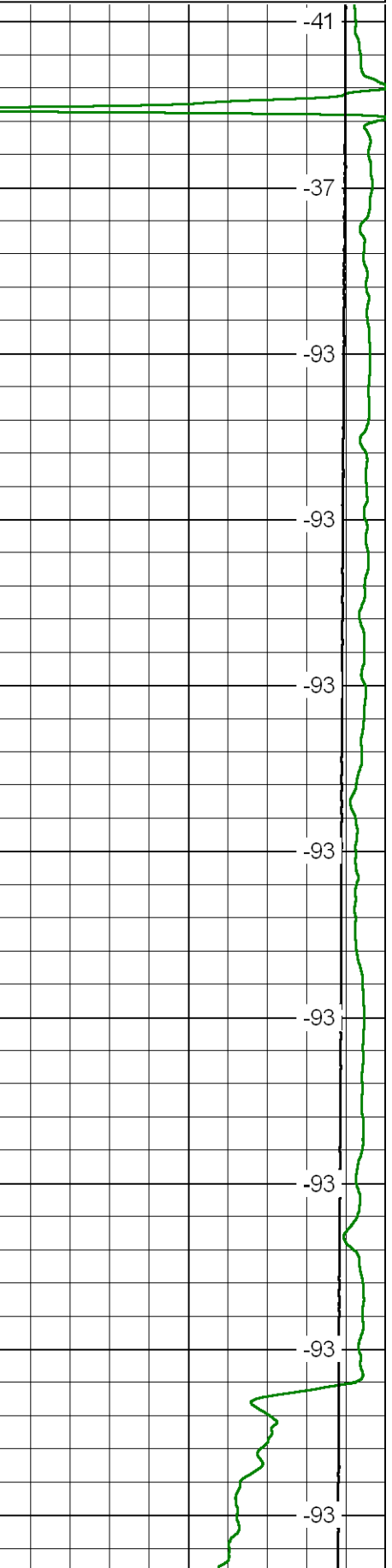
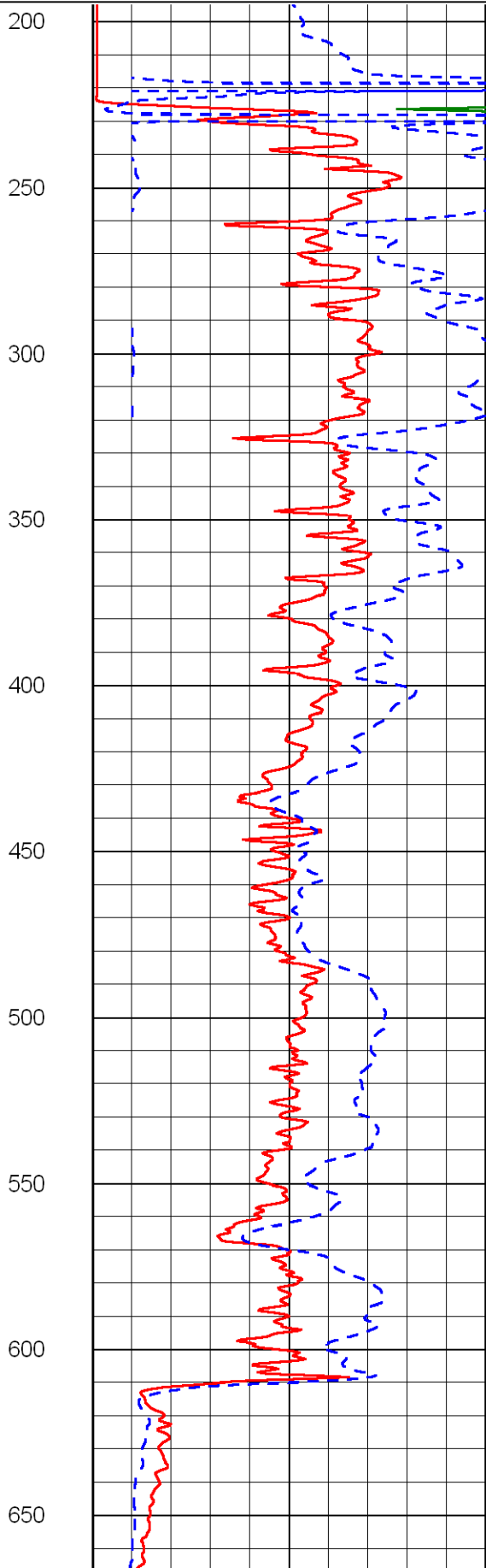
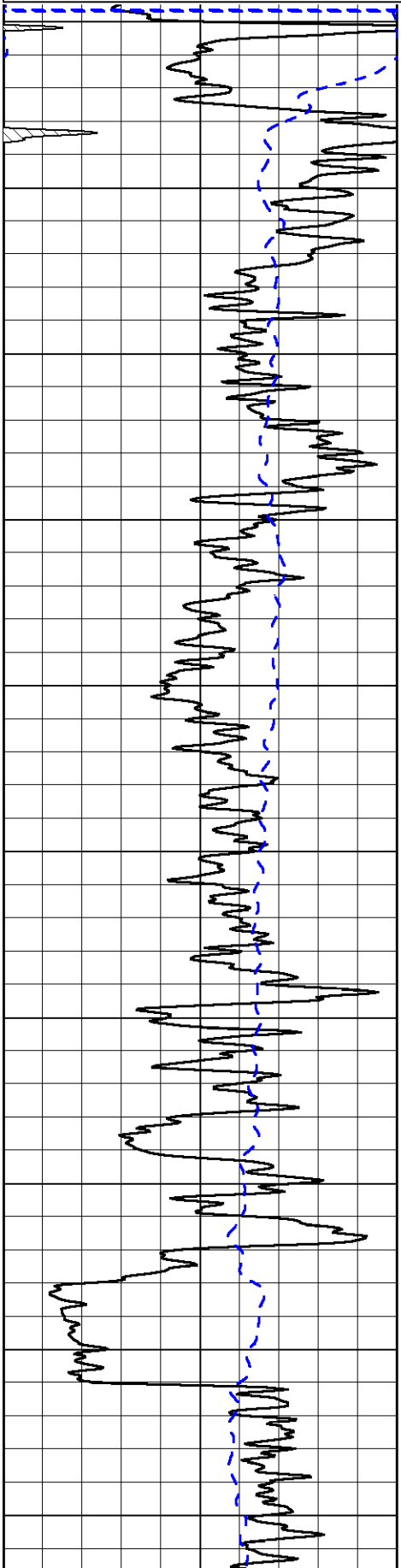
Phillipsburg, KS:  
8N to Hunter Rd, 7W  
to 700 Rd, 1N, E into

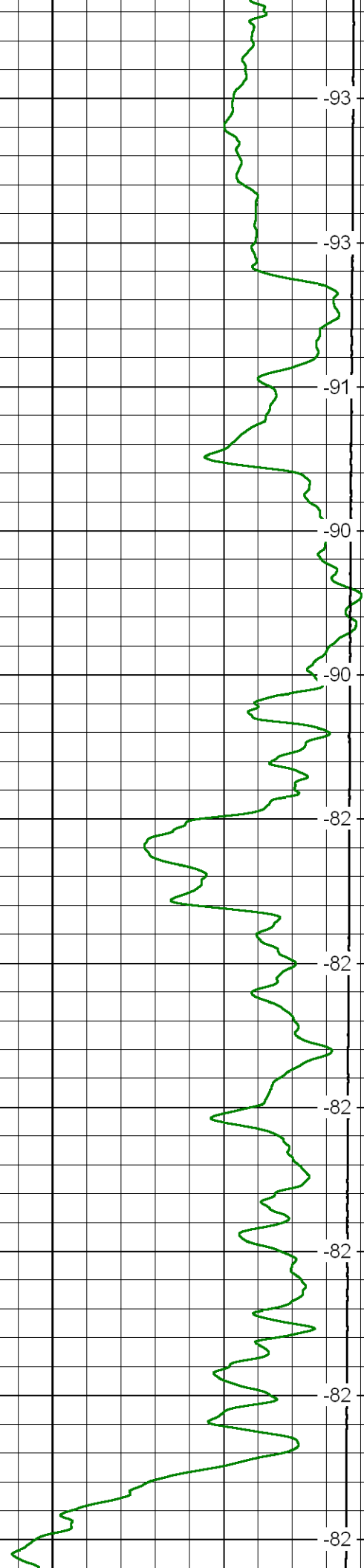
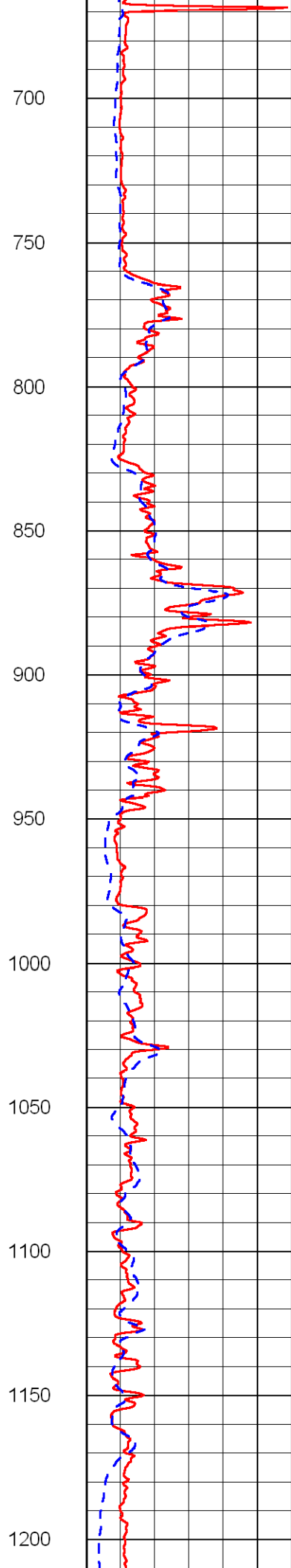
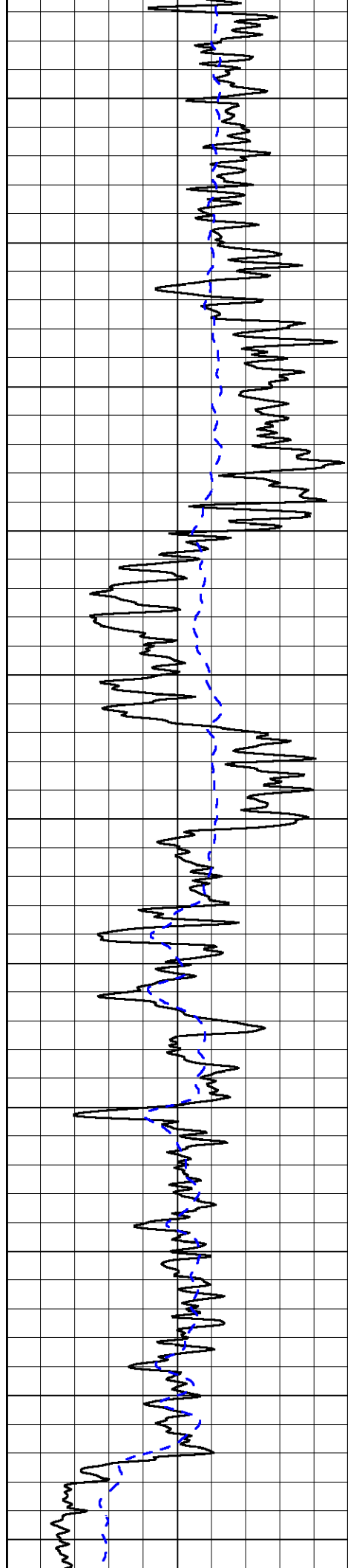
Database File: bachhd.db  
Dataset Pathname: dil/bacmain  
Presentation Format: dil2in  
Dataset Creation: Wed May 16 01:12:25 2012  
Charted by: Depth in Feet scaled 1:600

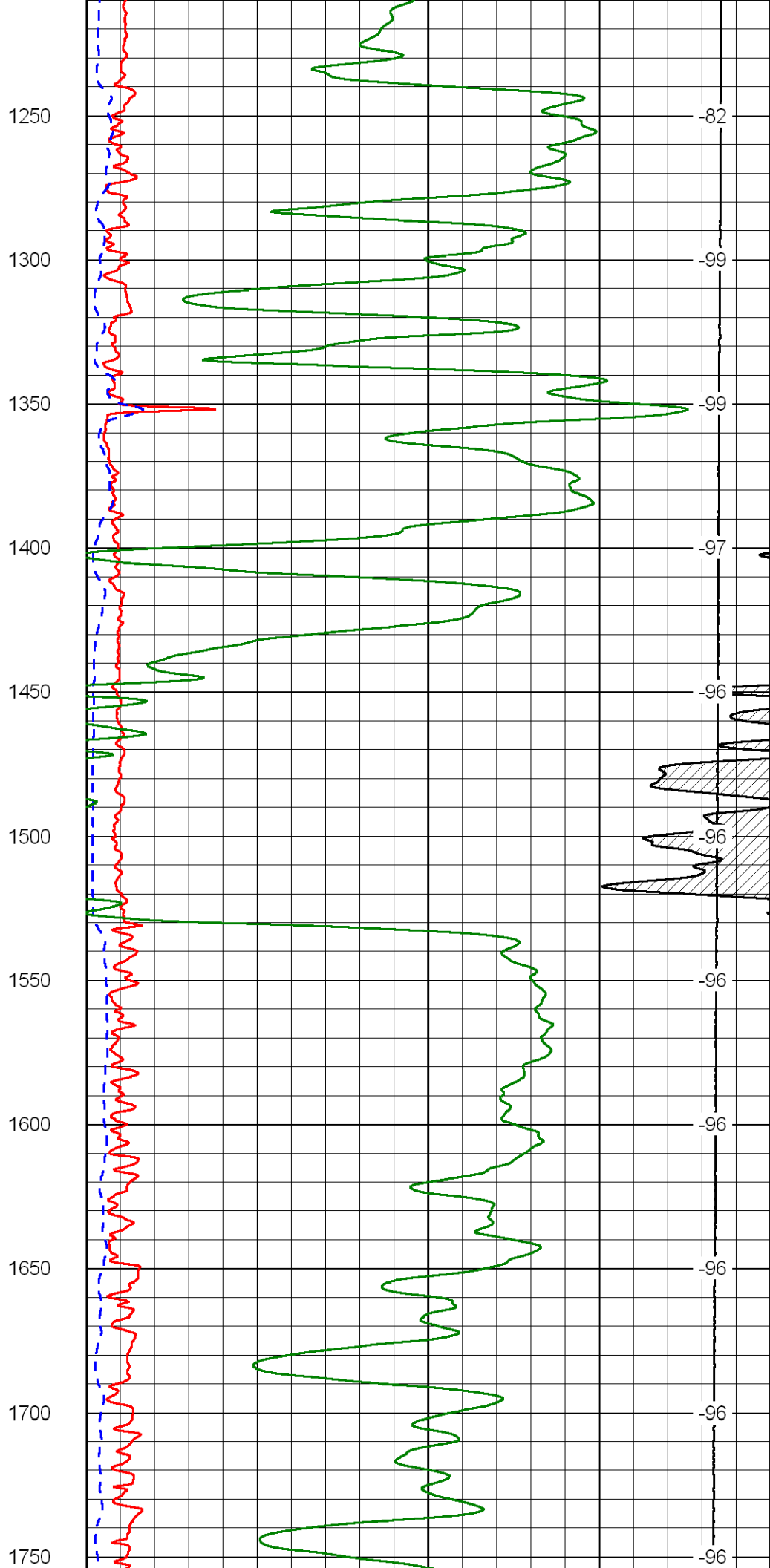
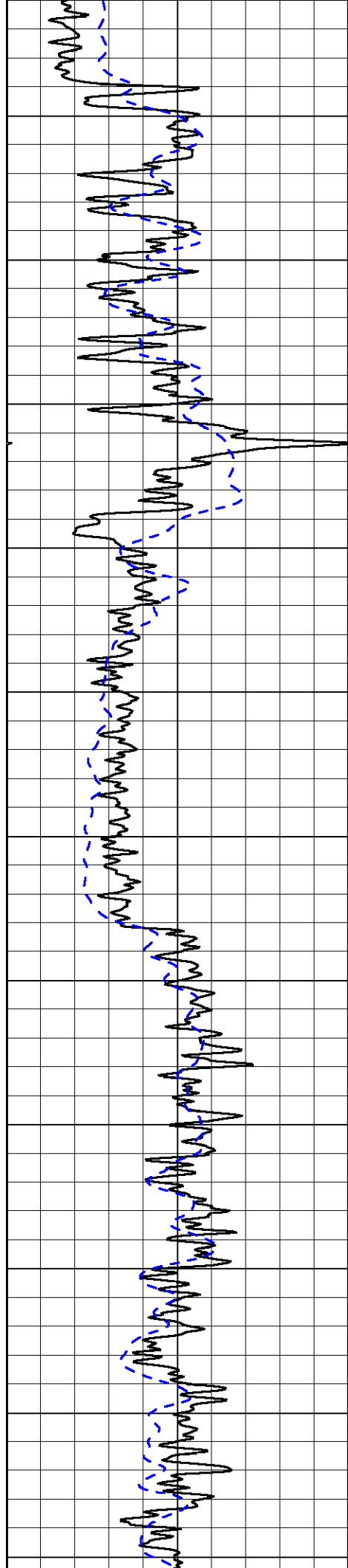
0 Gamma Ray 150  
-200 SP 0

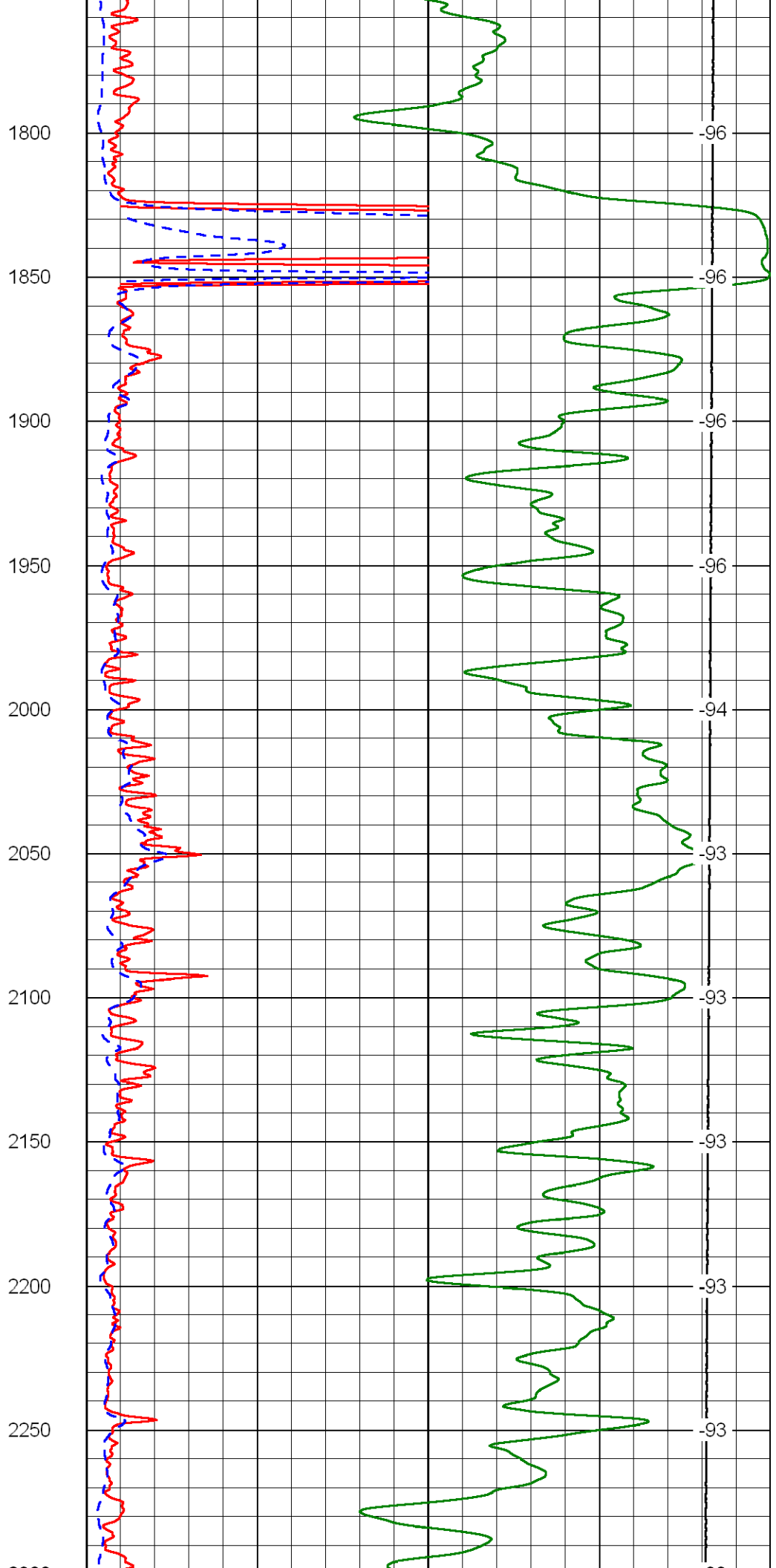
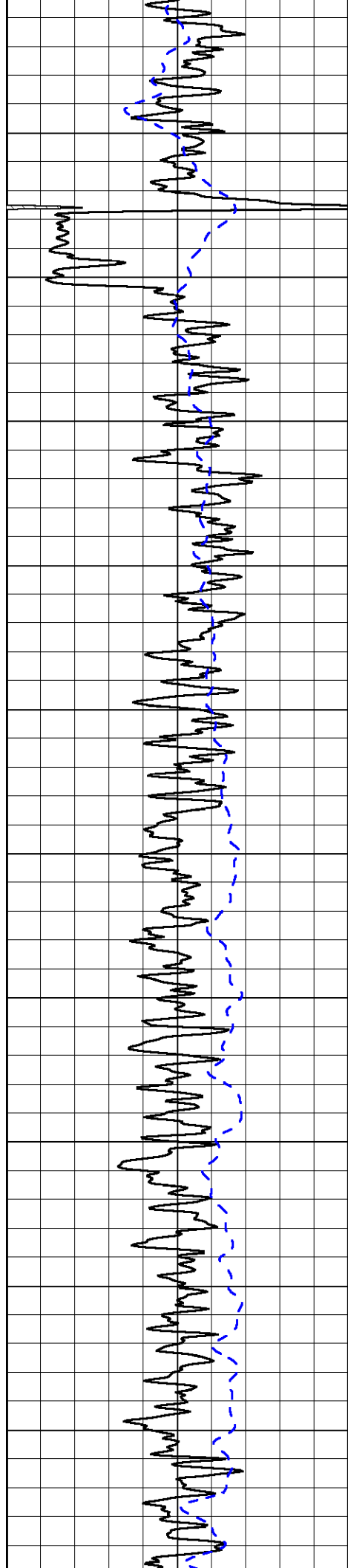
0 Shallow Resistivity 50  
0 Deep Resistivity 50  
1000 Conductivity 0  
15000 Line Tension 0  
50 Shallow Resistivity 50  
50 Deep Resistivity 50

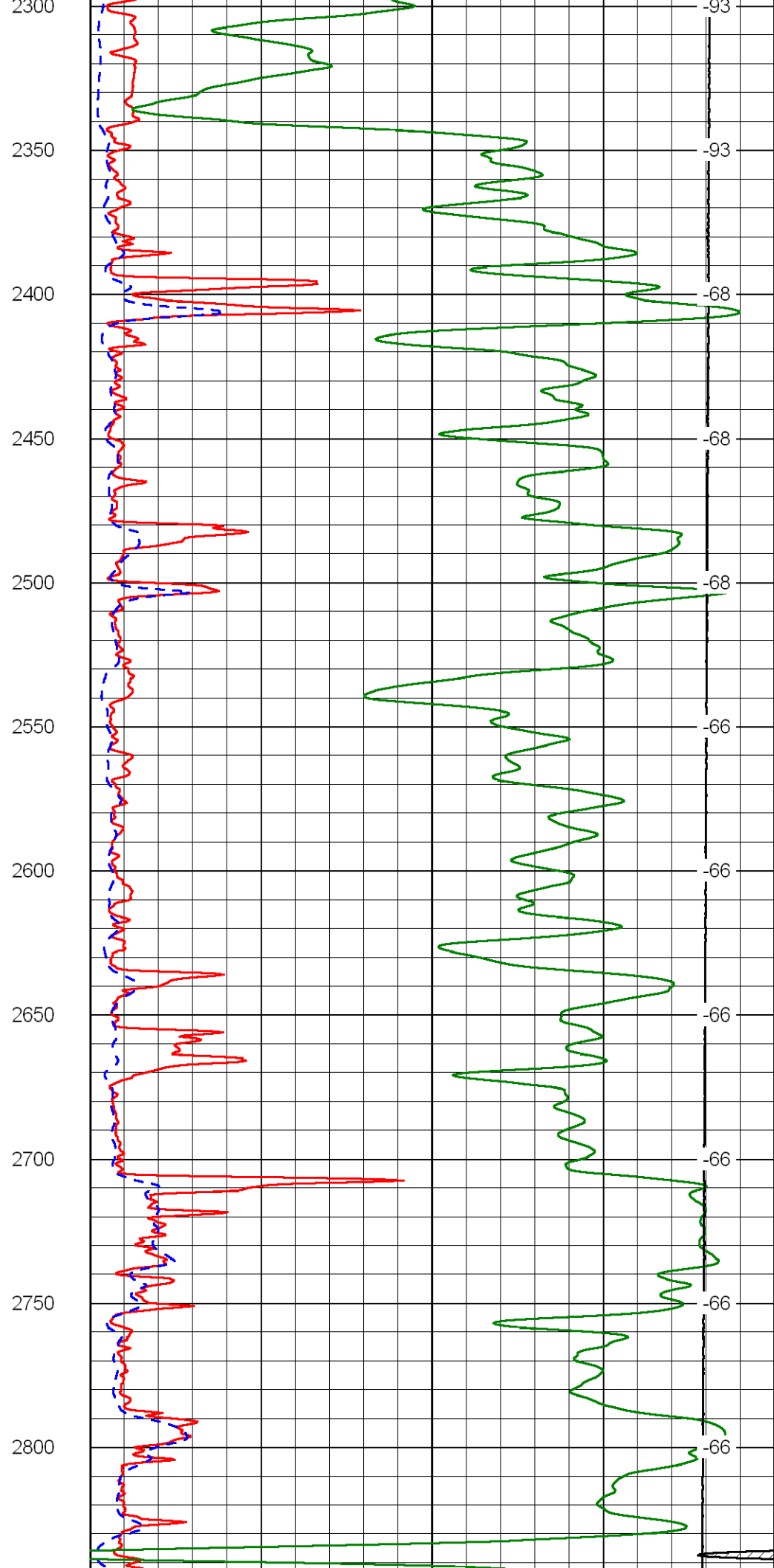
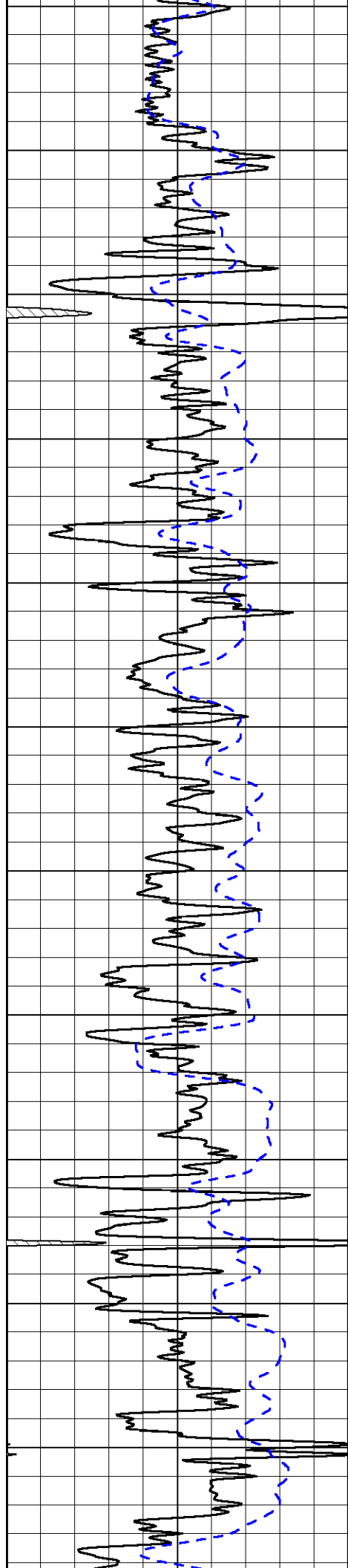
LSPD











-93

-93

-68

-68

-68

-66

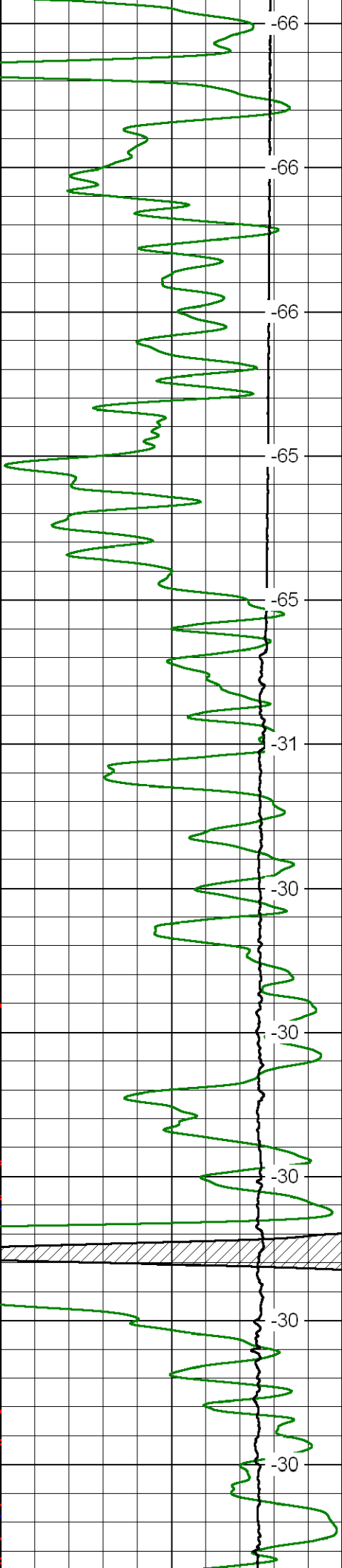
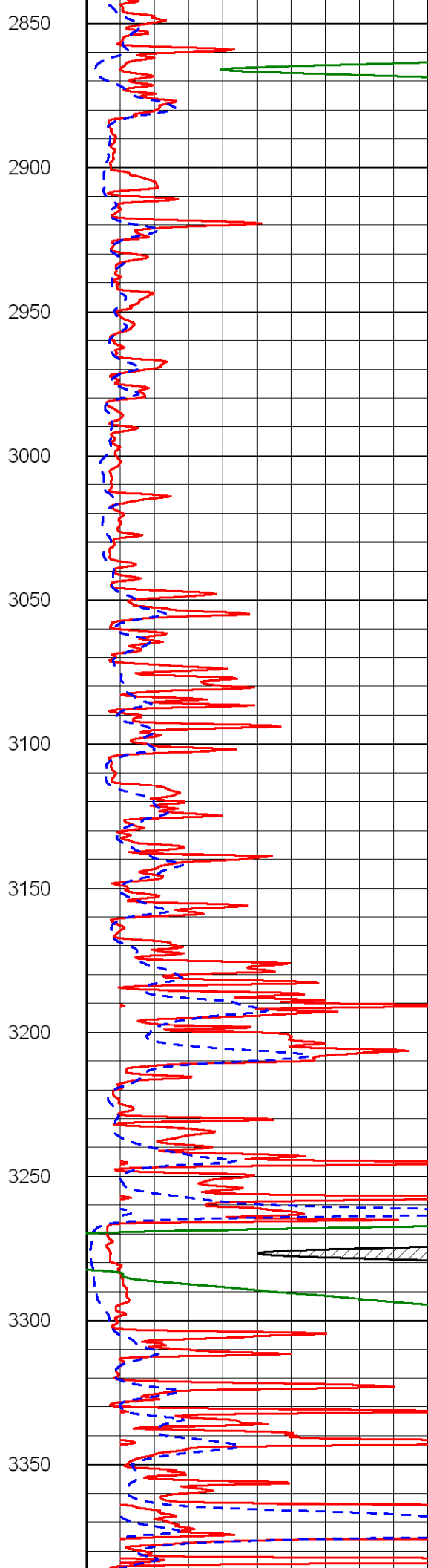
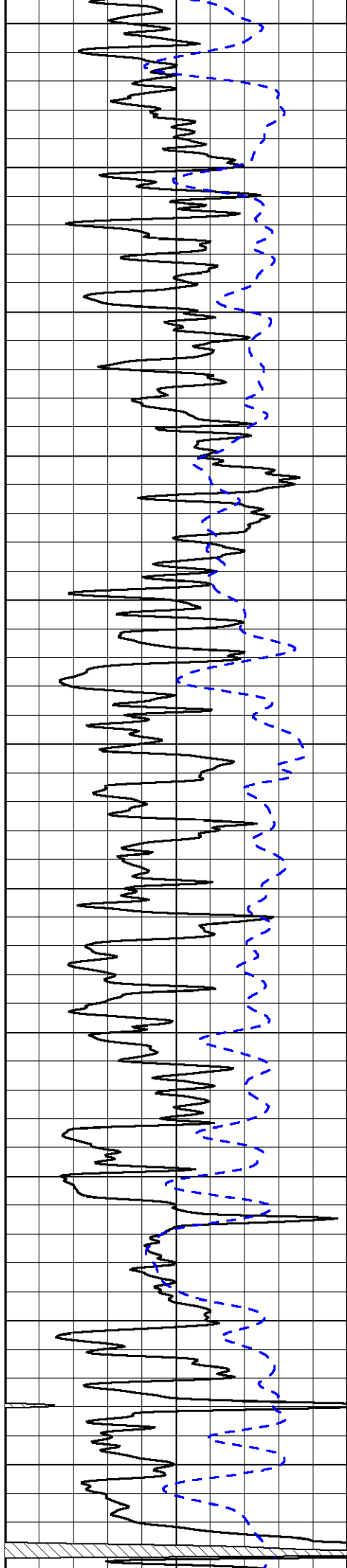
-66

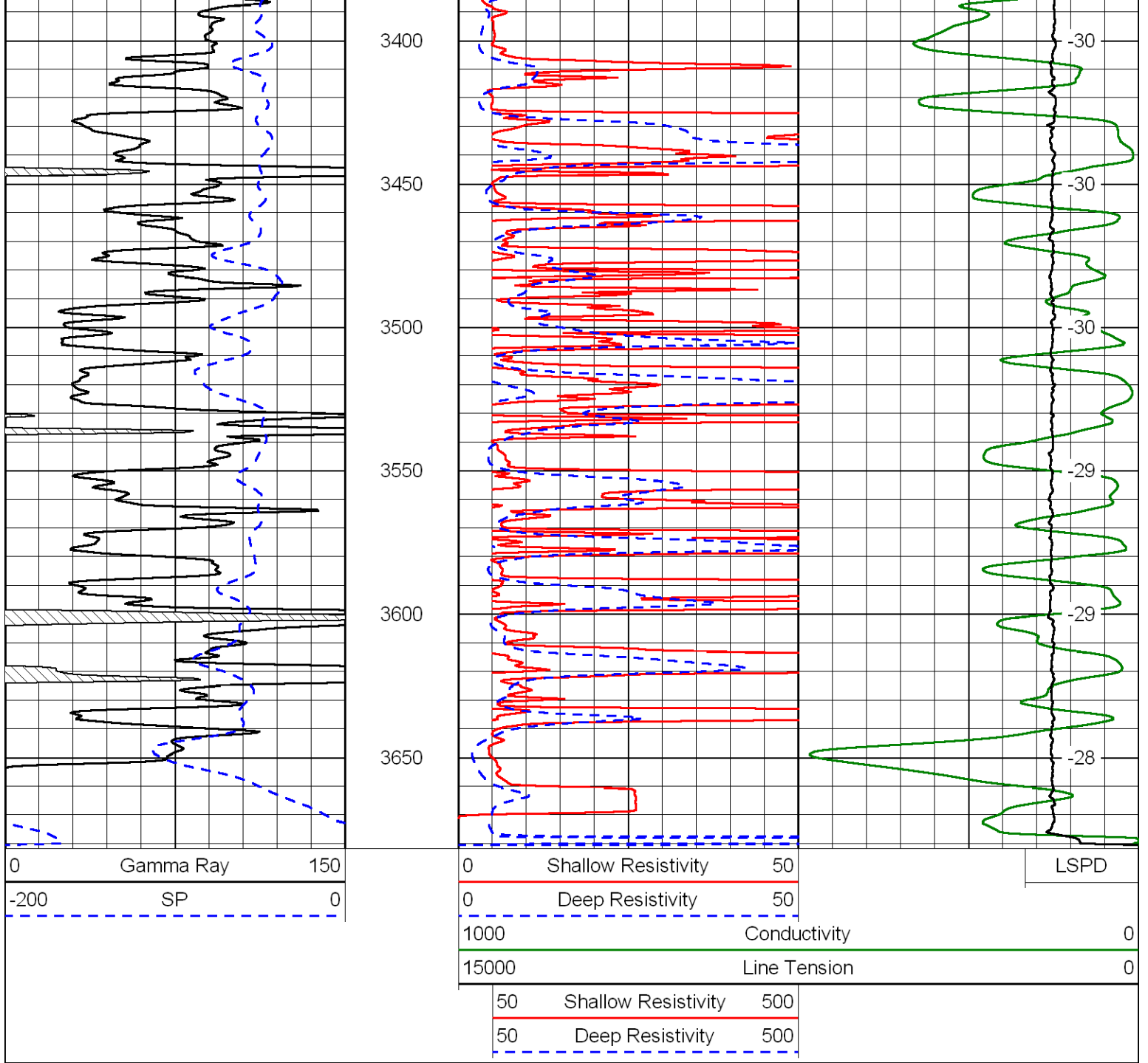
-66

-66

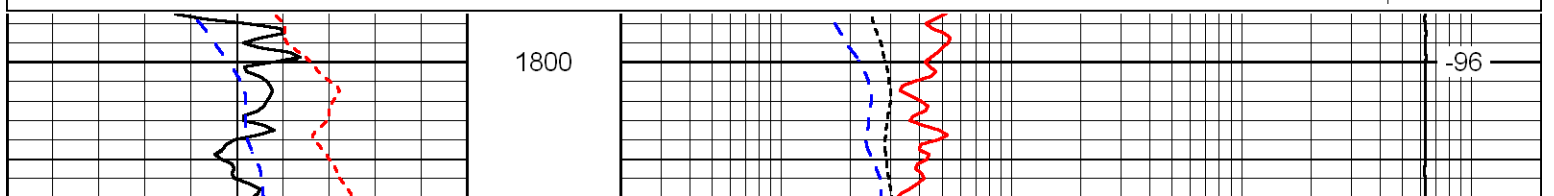
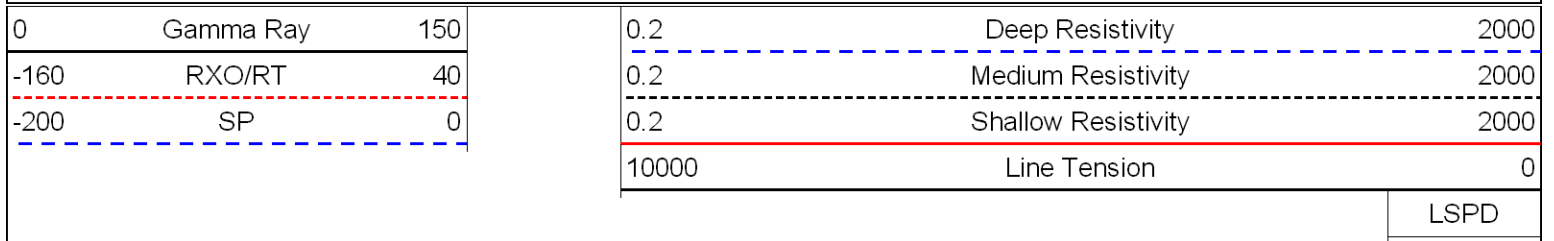
-66

-66

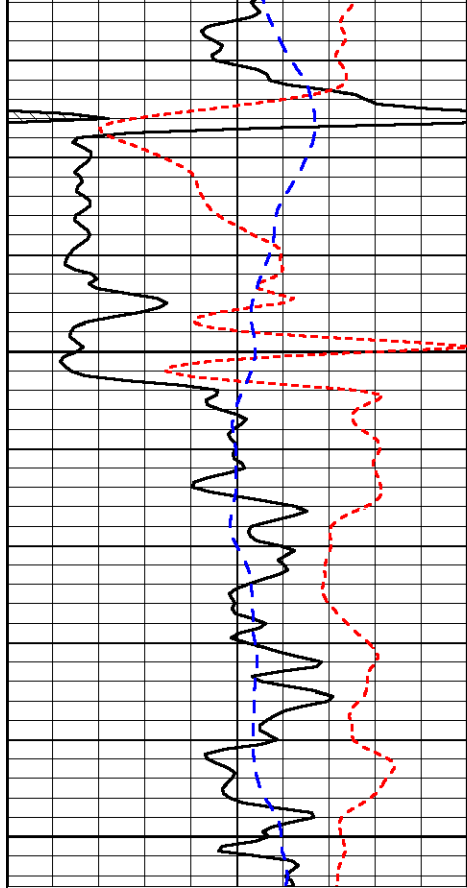




Database File:            bachhd.db  
 Dataset Pathname:        dil/bacmain  
 Presentation Format:      dil  
 Dataset Creation:        Wed May 16 01:12:25 2012  
 Charted by:                Depth in Feet scaled 1:240



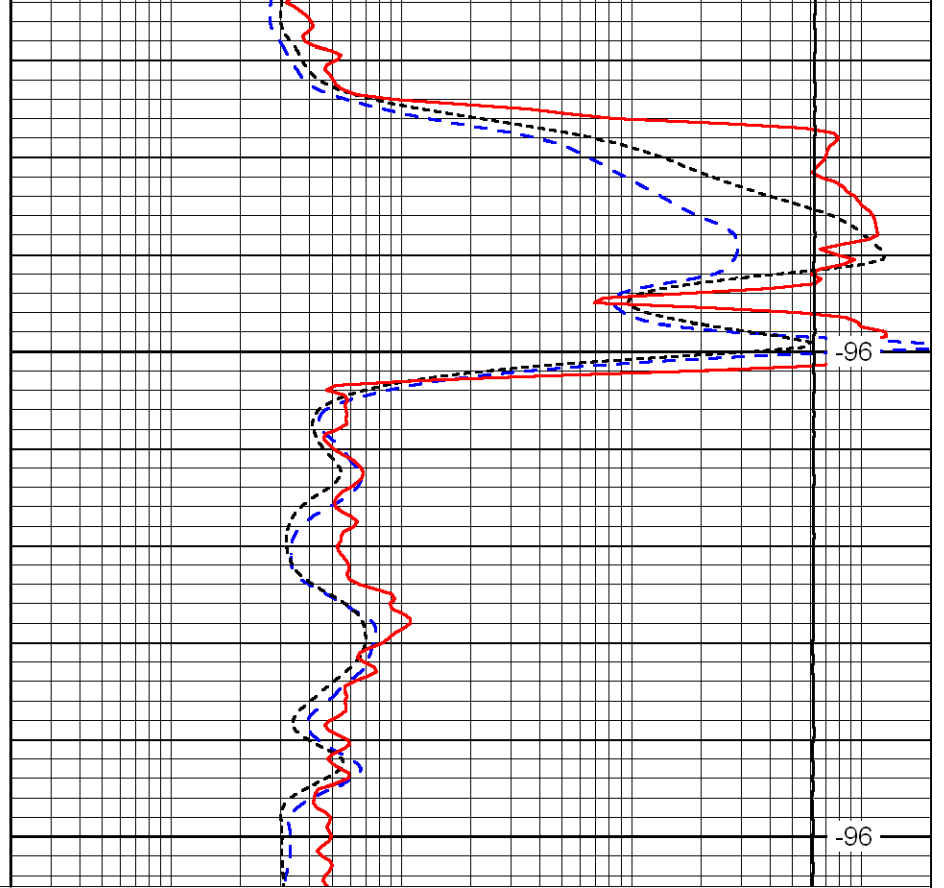




0	Gamma Ray	150
-160	RXO/RT	40
-200	SP	0

1850

1900



0.2	Deep Resistivity	2000
0.2	Medium Resistivity	2000
0.2	Shallow Resistivity	2000
10000	Line Tension	0

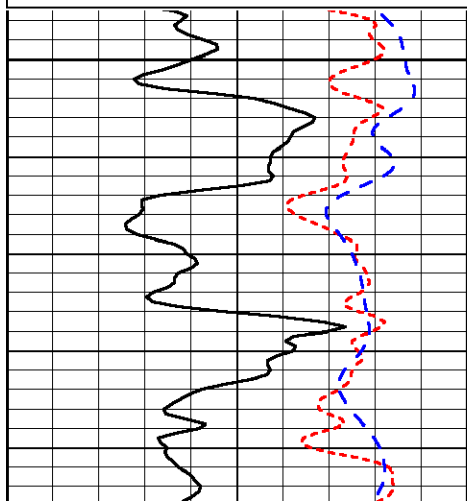
LSPD

Database File: bachhd.db  
 Dataset Pathname: dil/bacmain  
 Presentation Format: dil  
 Dataset Creation: Wed May 16 01:12:25 2012  
 Charted by: Depth in Feet scaled 1:240

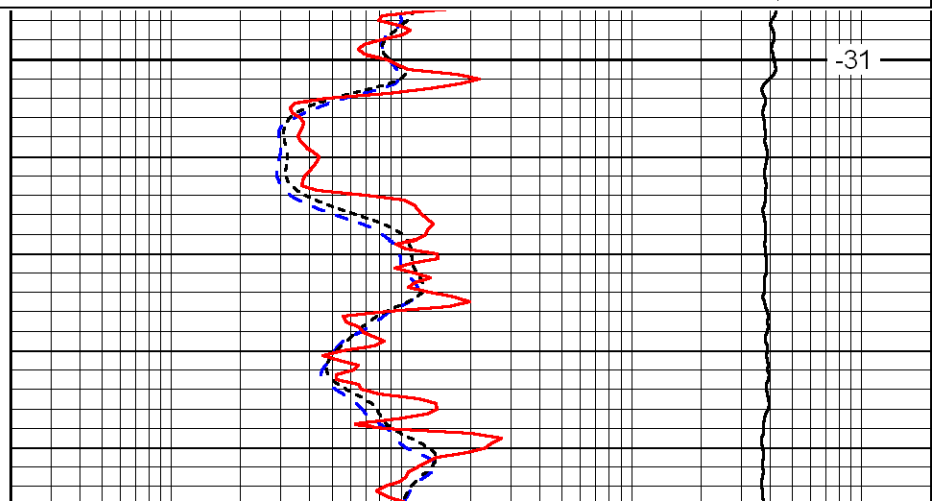
0	Gamma Ray	150
-160	RXO/RT	40
-200	SP	0

0.2	Deep Resistivity	2000
0.2	Medium Resistivity	2000
0.2	Shallow Resistivity	2000
10000	Line Tension	0

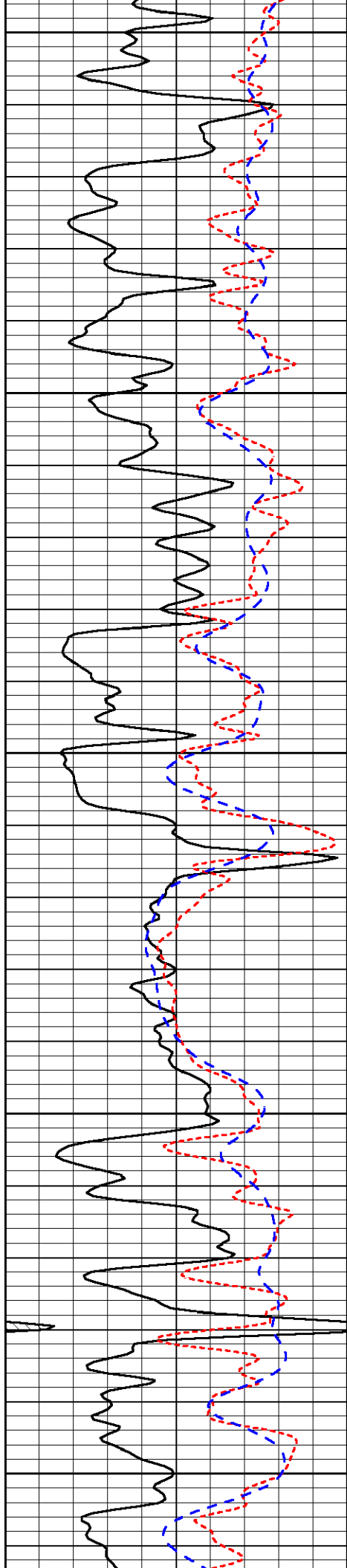
LSPD



3100



-31



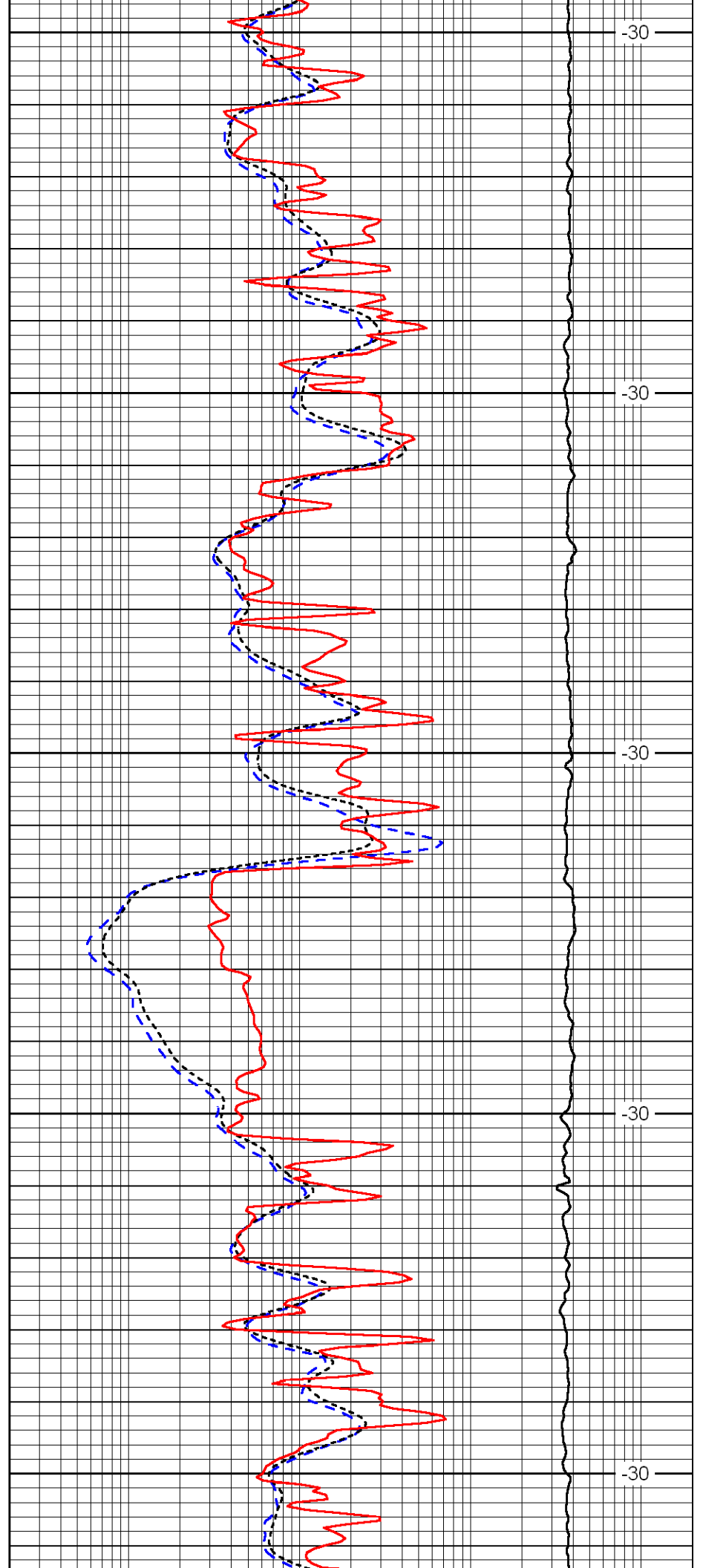
3150

3200

3250

3300

3350



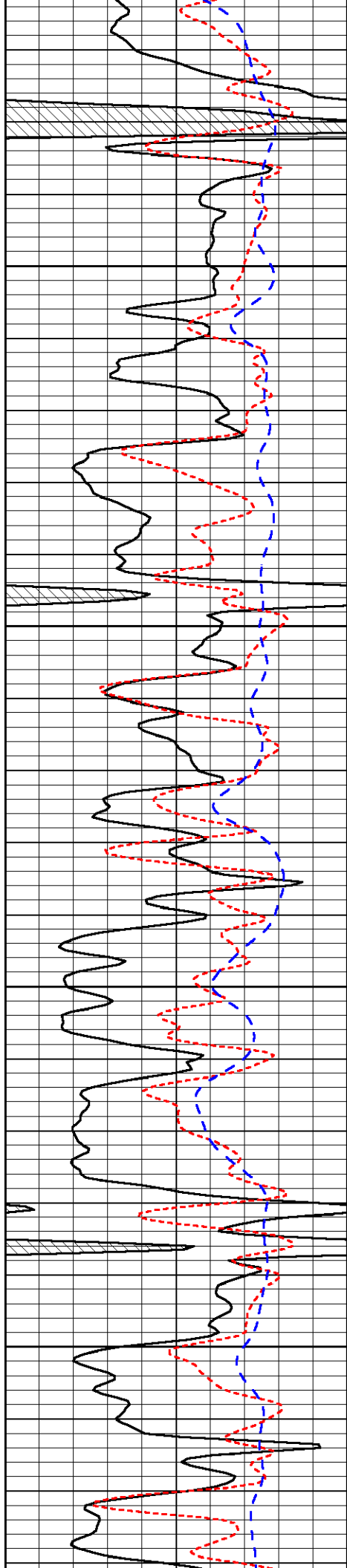
-30

-30

-30

-30

-30

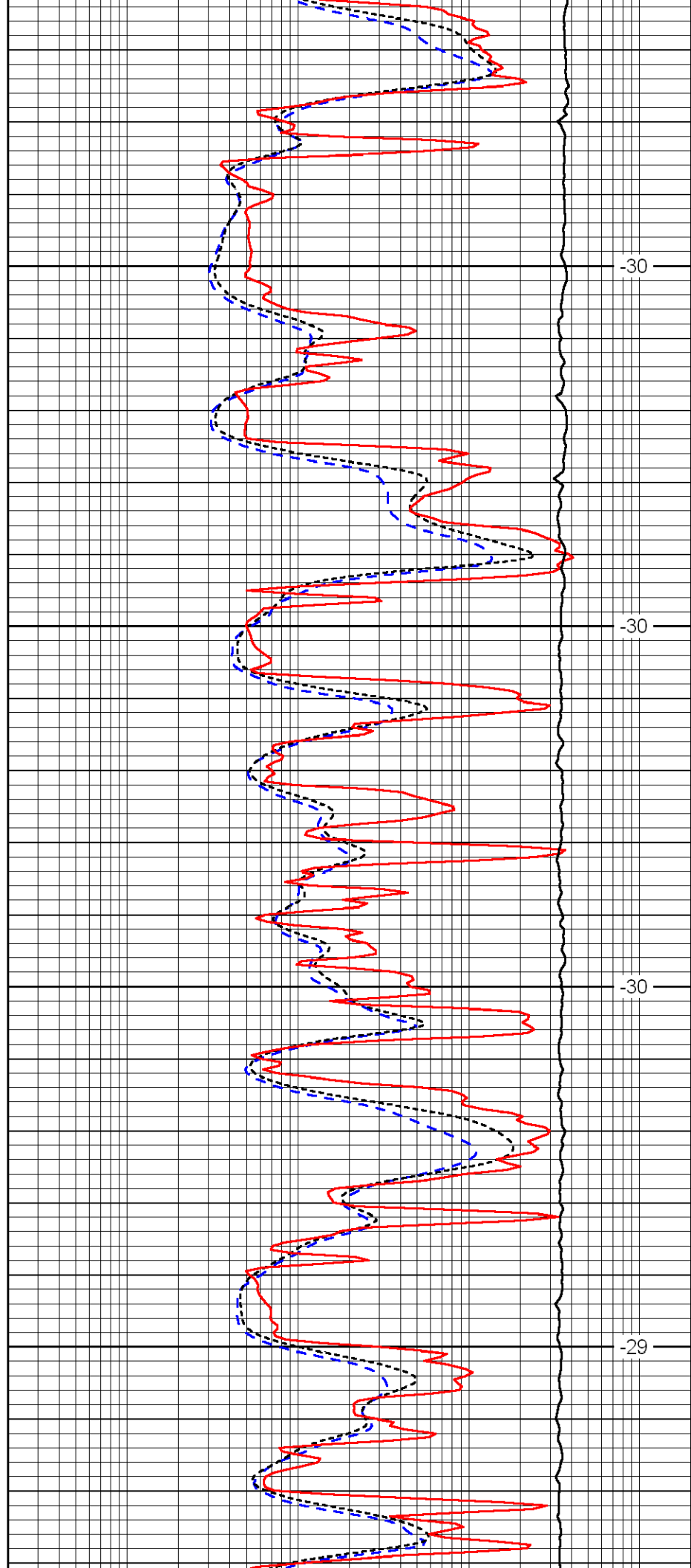


3400

3450

3500

3550

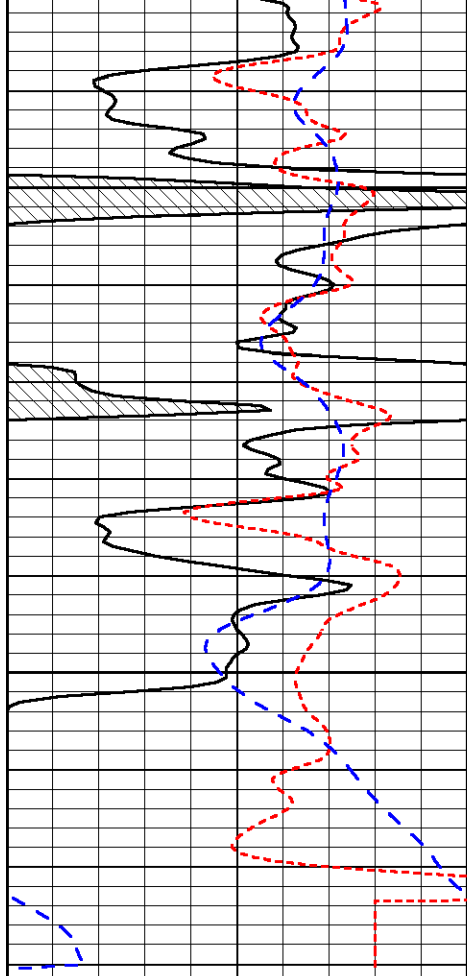


-30

-30

-30

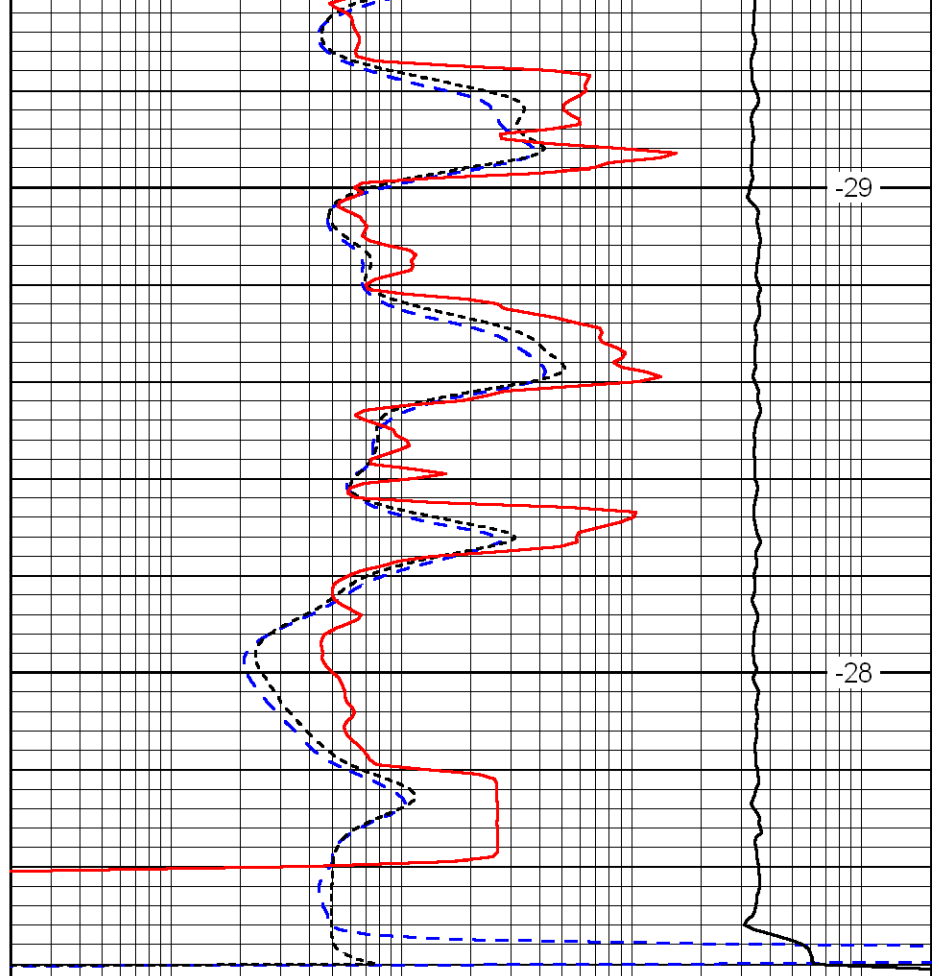
-29



3600

3650

0	Gamma Ray	150
-160	RXO/RT	40
-200	SP	0



-29

-28

0.2	Deep Resistivity	2000
0.2	Medium Resistivity	2000
0.2	Shallow Resistivity	2000
10000	Line Tension	0

LSPD