



DIGITAL LOG (785) 625-3858

Dual Compensated Porosity Log

API No. 15-147-20,675-00-00

Company **Bach Oil Production**
 Well **Billy #1**
 Field **Wildcat**
 County **Phillips** State **Kansas**

Location **NW SE SE SW
 400' FSL / 2190' FWL**

Sec: **34** Twp: **1S** Rge: **19W**

Other Services
 DIL/MEL

Permanent Datum **Ground Level** Elevation **2221**
 Log Measured From **Kelly Bushing** 5 Ft. Above Perm. Datum
 Drilling Measured From **Kelly Bushing**

K.B. 2226
 D.F. G.L. 2221

Date **5/16/2012**

Run Number **One**

Type Log **CNL / CDL**

Depth Driller **3675**

Depth Logger **3674**

Bottom Logged Interval **3653**

Top Logged Interval **3100**

Type Fluid In Hole **Chemical**

Salinity, PPM CL **1000**

Density **9.0**

Level **Full**

Max. Rec. Temp. F **113**

Operating Rig Time **3 Hours**

Equipment -- Location **15 Hays**

Recorded By **R. Barnhart**

Witnessed By **Bob Peterson**

Borehole Record		Casing Record				
Run No	Bit From	To	Size	Wgt.	From	To
One	12.25	00	224	8.625	23#	224
Two	7.875	224	TD			

<<< Fold Here >>>

All interpretations are opinions based on inferences from electrical or other measurements and we cannot and do not guarantee the accuracy or correctness of any interpretation, and we shall not, except in the case of gross or willful negligence on our part, be liable or responsible for any loss, costs, damages, or expenses incurred or sustained by anyone resulting from any interpretation made by any of our officers, agents or employees. These interpretations are also subject to our general terms and conditions set out in our current Price Schedule.

Comments

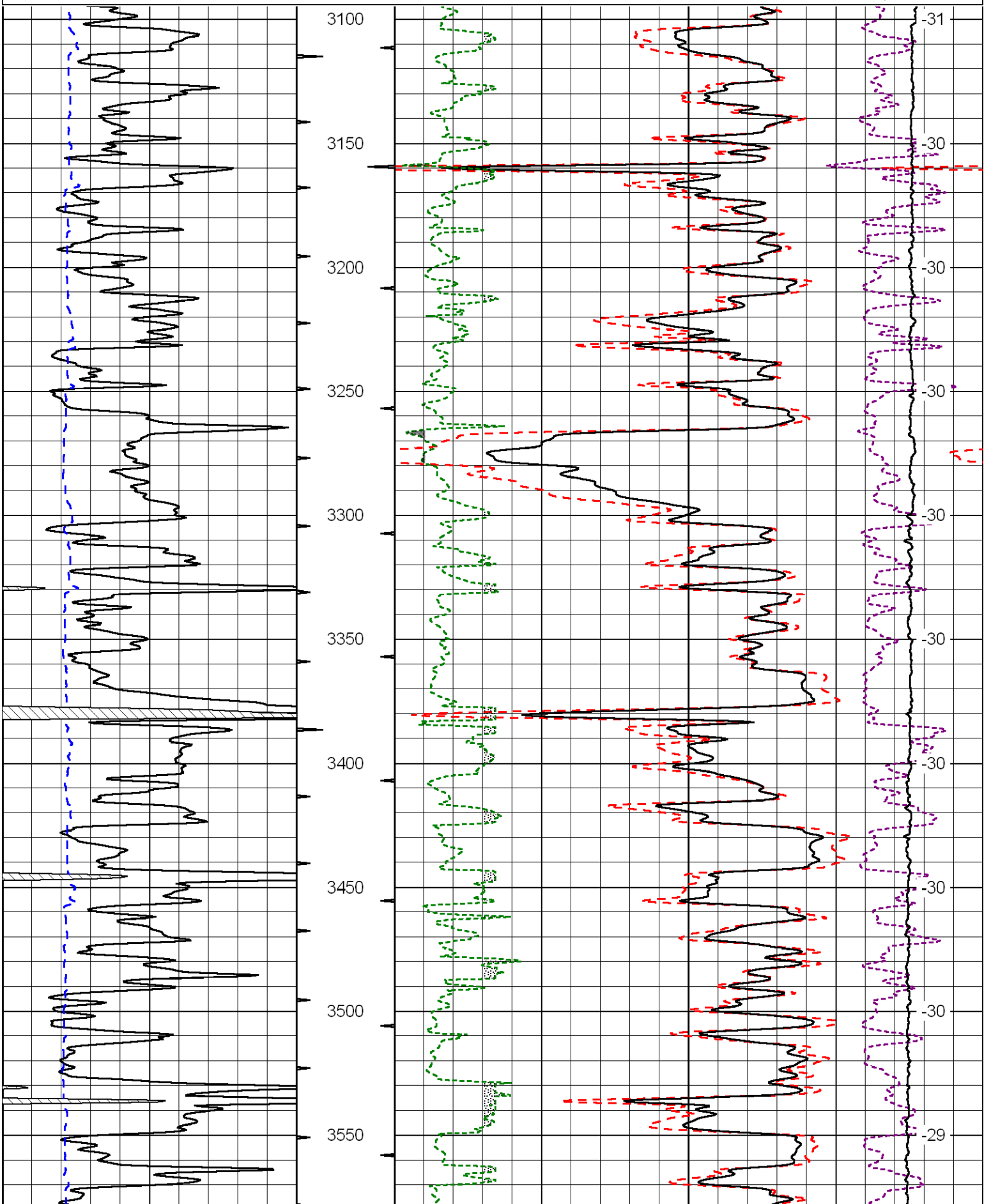
Thank you for using Log-Tech, Inc.
 (785) 625-3858

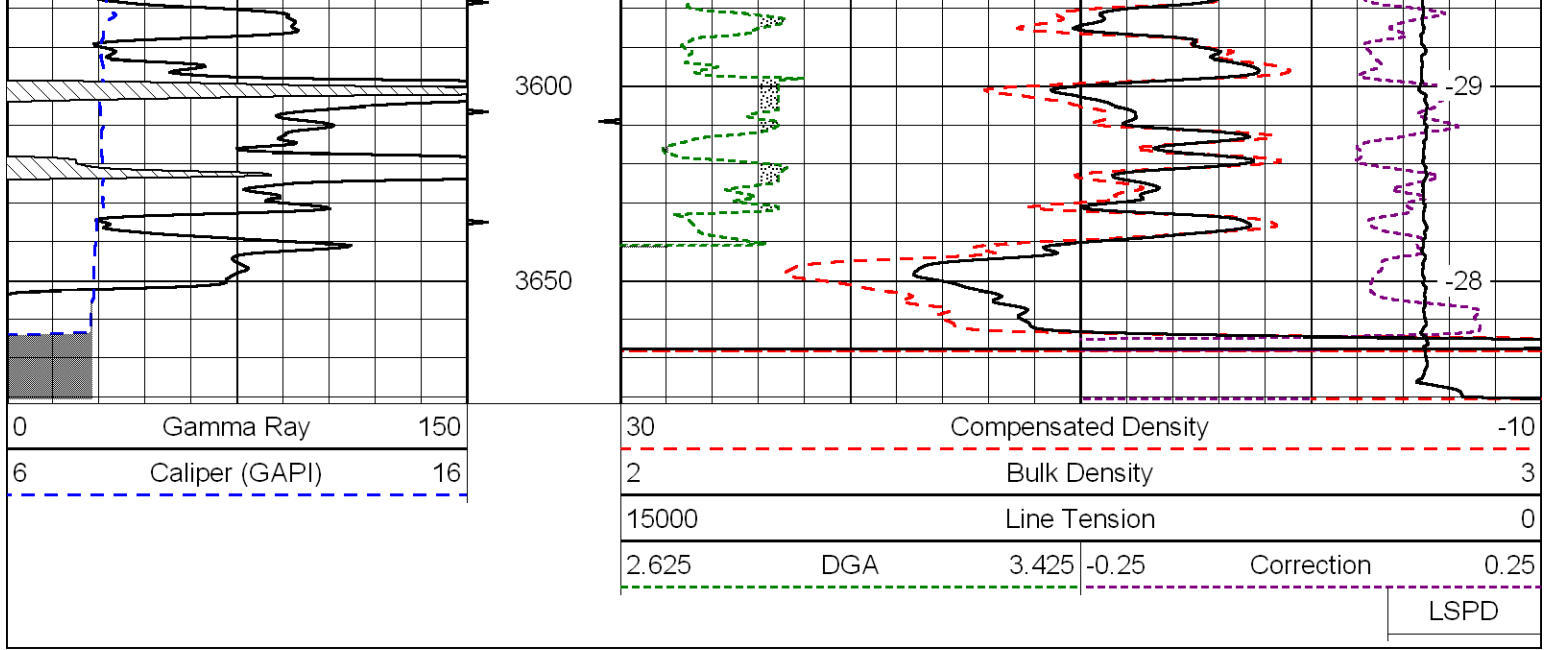
Phillipsburg, KS:
 8N to Hunter Rd, 7W
 to 700 Rd, 1N, E into

Database File: bachhd.db
 Dataset Pathname: dil/bacmain
 Presentation Format: cdl
 Dataset Creation: Wed May 16 01:12:25 2012
 Charted by: Depth in Feet scaled 1:600

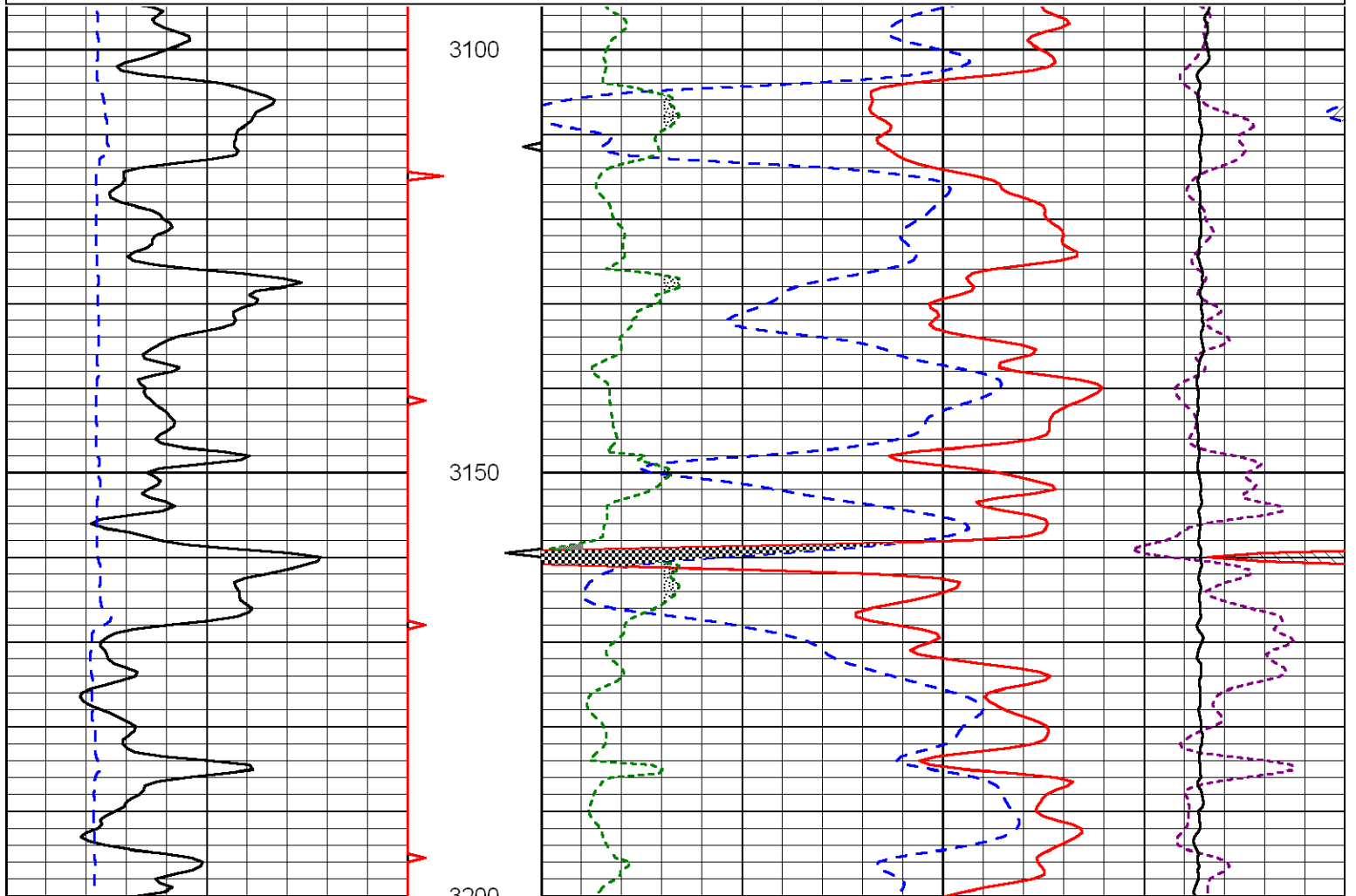
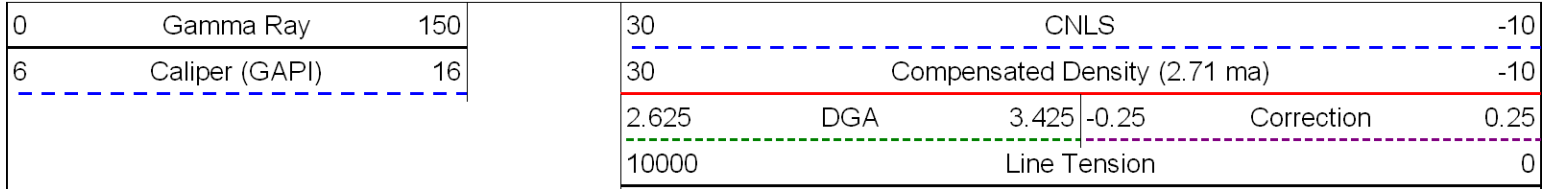
0	Gamma Ray	150
6	Caliper (GAPI)	16

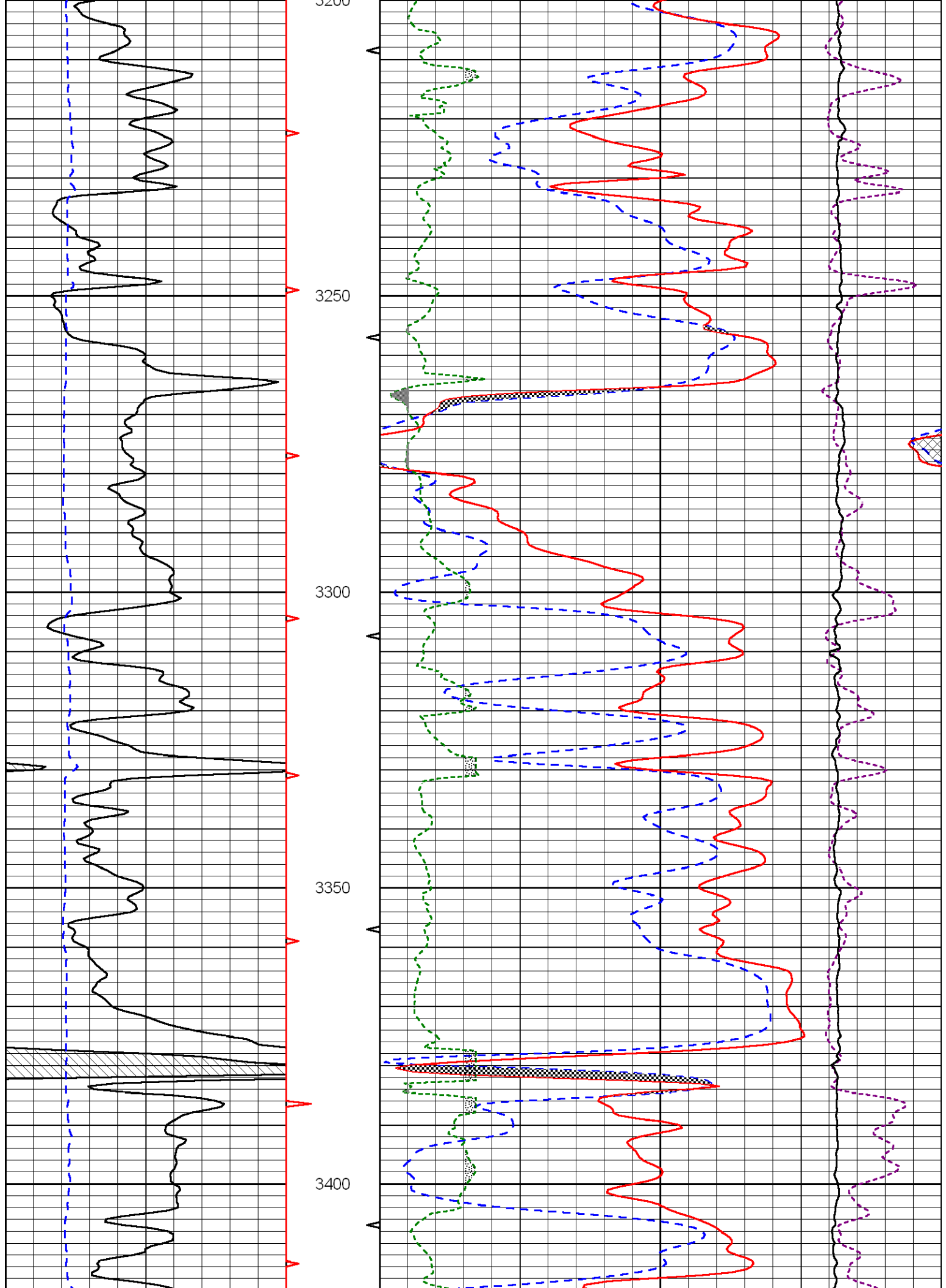
30	Compensated Density		-10
2	Bulk Density		3
15000	Line Tension		0
2.625	DGA	3.425	-0.25
Correction			0.25
LSPD			

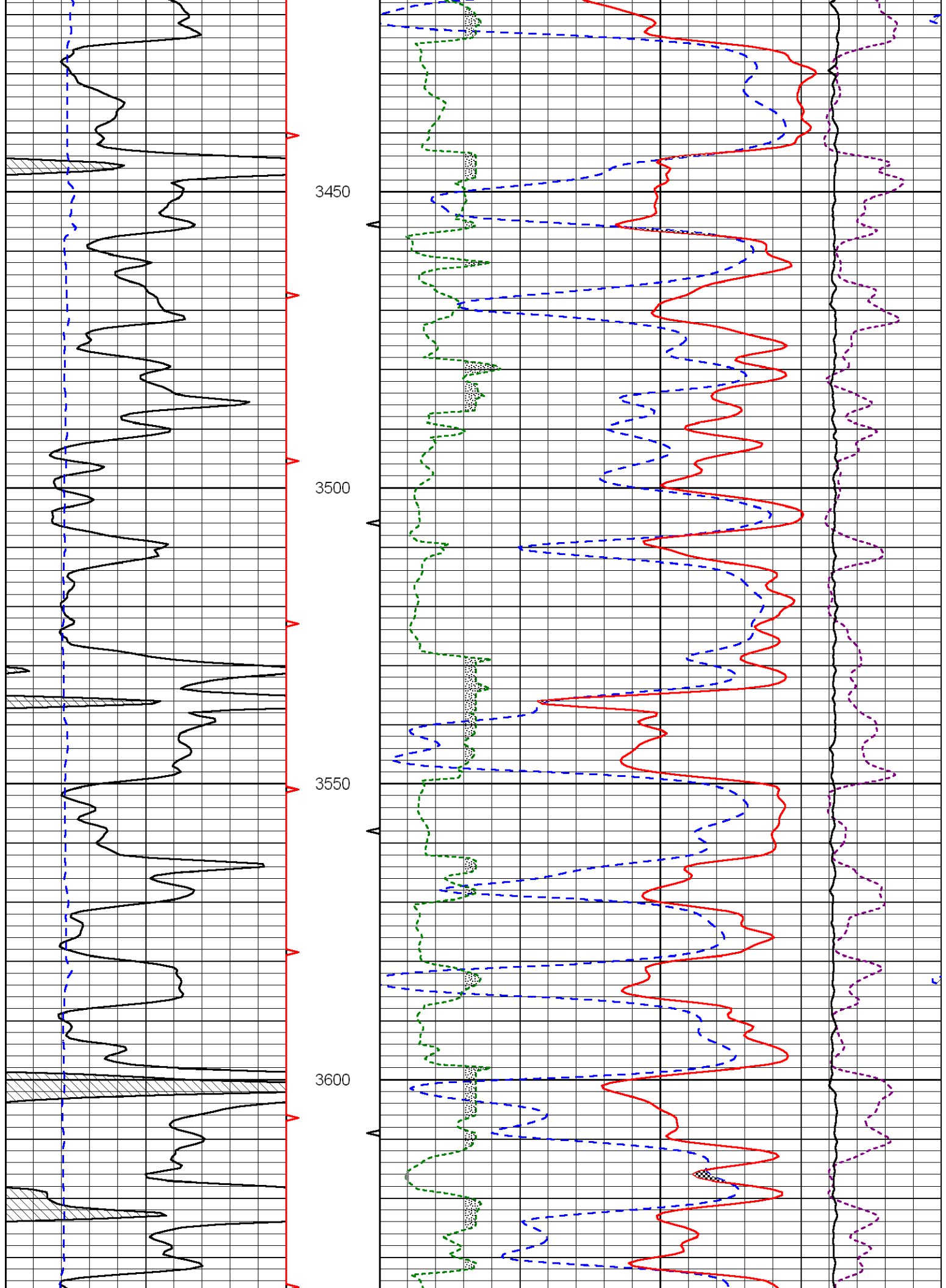


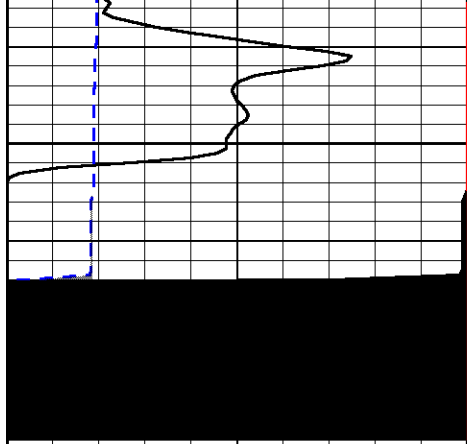


Database File: bachhd.db
 Dataset Pathname: dil/bacmain
 Presentation Format: cndlspec
 Dataset Creation: Wed May 16 01:12:25 2012
 Charted by: Depth in Feet scaled 1:240



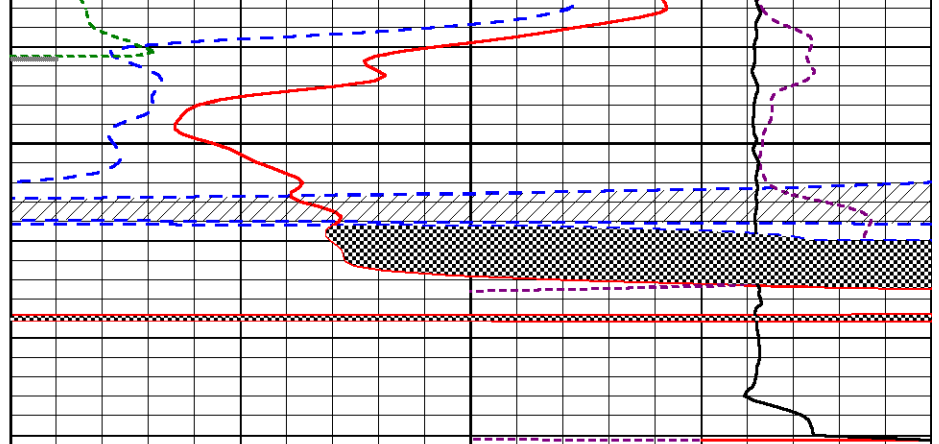






3650

0	Gamma Ray	150
6	Caliper (GAPI)	16



30	CNLS	-10			
30	Compensated Density (2.71 ma)	-10			
2.625	DGA	3.425	-0.25	Correction	0.25
10000	Line Tension	0			