

LOG-TECH



DIGITAL LOG (785) 625-3858

Microresistivity Log

API No.	15-147-20,675-00-00	
Company	Bach Oil Production	
Well	Billy #1	
Field	Wildcat	
County	Phillips	State
Location	NW SE SE SW 400' FSL / 2190' FWL	
Sec:	34	Twp: 1S Rge: 19W
Other Services	CNL/CDL DIL	
Permanent Datum	Ground Level	Elevation 2221
Log Measured From	Kelly Bushing	5 Ft. Above Perm. Datum
Drilling Measured From	Kelly Bushing	
Elevation	K.B. 2226 D.F. 2221 G.L. 2221	

Date	5/16/2012
Run Number	Two
Depth Driller	3675
Depth Logger	3674
Bottom Logged Interval	3673
Top Log Interval	3100
Casing Driller	8.625 @ 224
Casing Logger	224
Bit Size	7.875
Type Fluid in Hole	Chemical
Salinity, ppm CL	1000
Density / Viscosity	9.0 54
pH / Fluid Loss	10.5 8.0
Source of Sample	Flowline
Rm @ Meas. Temp	1.00 @ 81
Rmf @ Meas. Temp	0.75 @ 81
Rmc @ Meas. Temp	1.35 @ 81
Source of Rmf / Rmc	Charts
Rm @ BHT	0.72 @ 113
Operating Rig Time	3 Hours
Max Rec. Temp. F	113
Equipment Number	15
Location	Hays
Recorded By	R. Barnhart
Witnessed By	Bob Peterson

<<< Fold Here >>>

All interpretations are opinions based on inferences from electrical or other measurements and we cannot and do not guarantee the accuracy or correctness of any interpretation, and we shall not, except in the case of gross or willful negligence on our part, be liable or responsible for any loss, costs, damages, or expenses incurred or sustained by anyone resulting from any interpretation made by any of our officers, agents or employees. These interpretations are also subject to our general terms and conditions set out in our current Price Schedule.

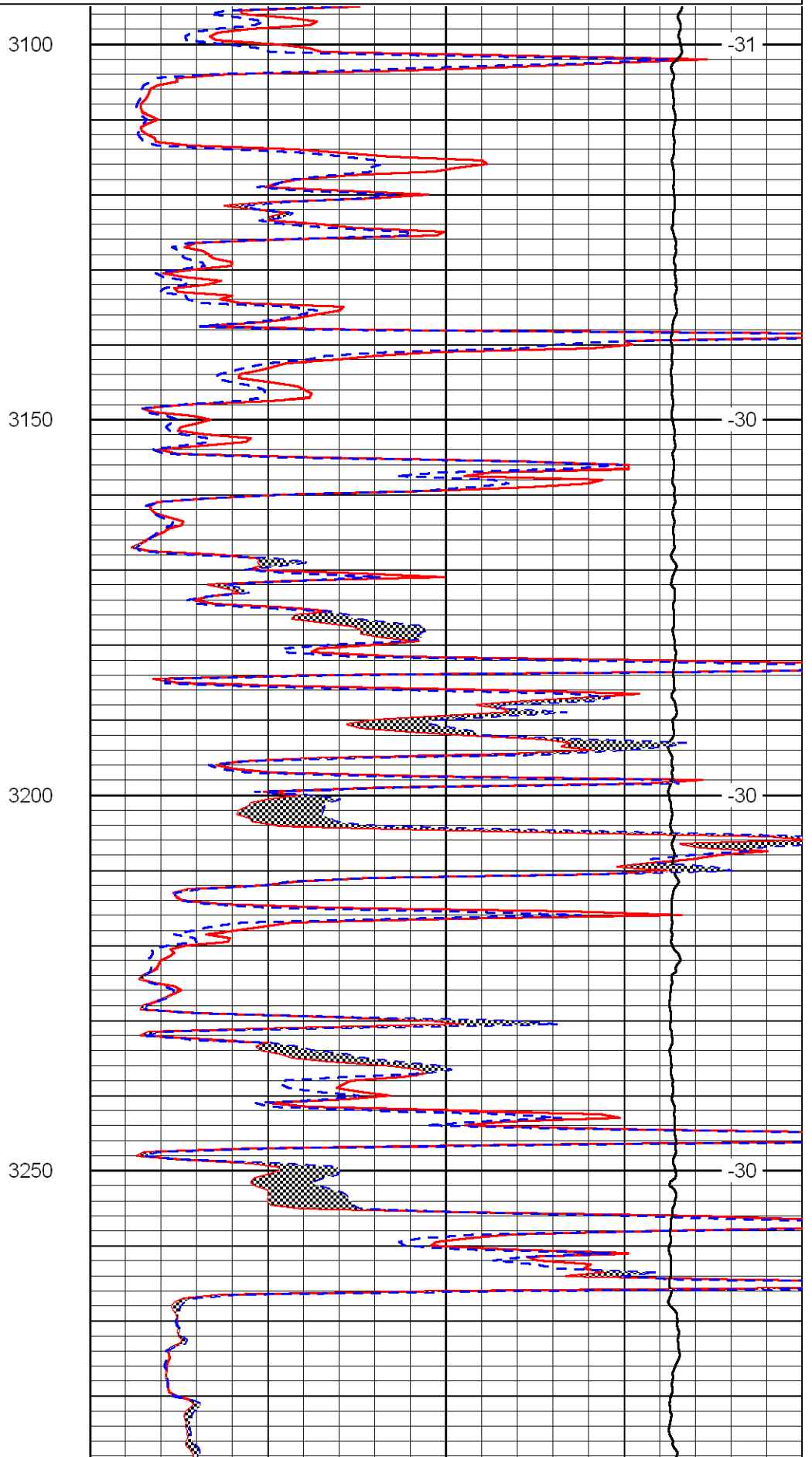
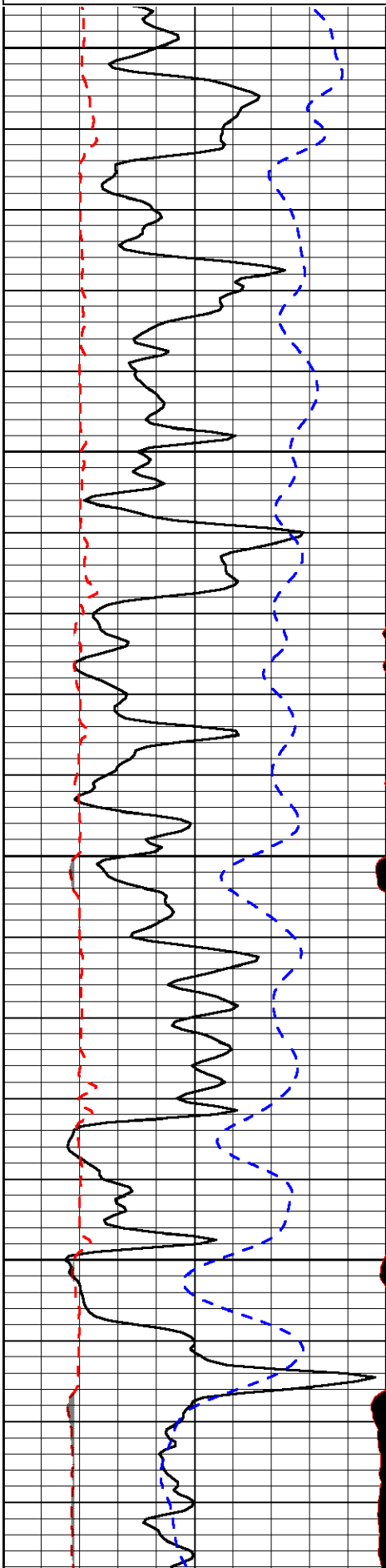
Comments

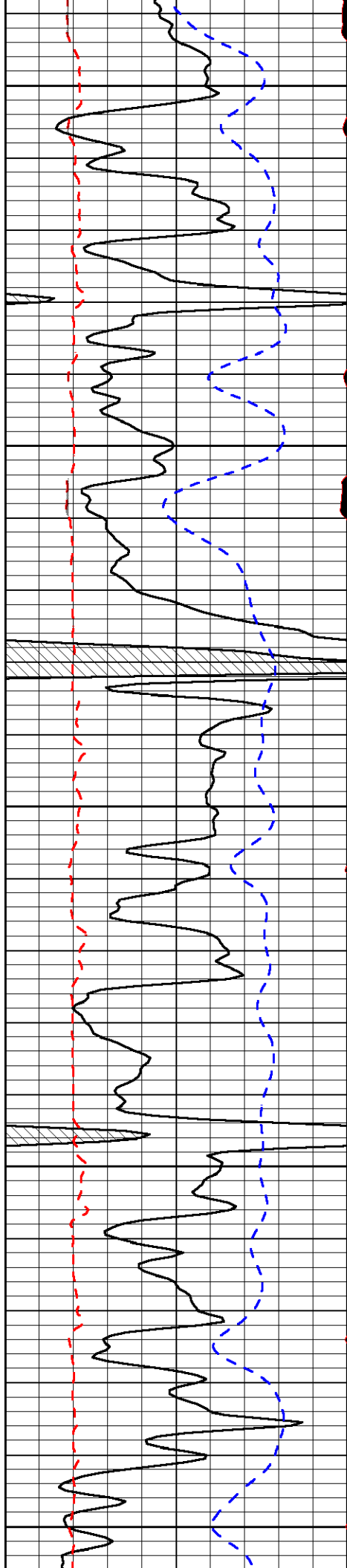
Thank you for using Log-Tech, Inc.
 (785) 625-3858
 Phillipsburg, KS:
 8N to Hunter Rd, 7W
 to 700 Rd, 1N, E into

Database File: bachhd.db
 Dataset Pathname: dil/bacmain
 Presentation Format: micro
 Dataset Creation: Wed May 16 01:12:25 2012
 Charted by: Depth in Feet scaled 1:240

0	Gamma Ray	150
6	MCAL (GAPI)	16
2.875	Mud Cake (GAPI)	7.875
-200	SP	0

0	Micro Inverse 1 X 1	40
0	Micro Normal 2"	40
10000	Line Weight	0
		LSPD





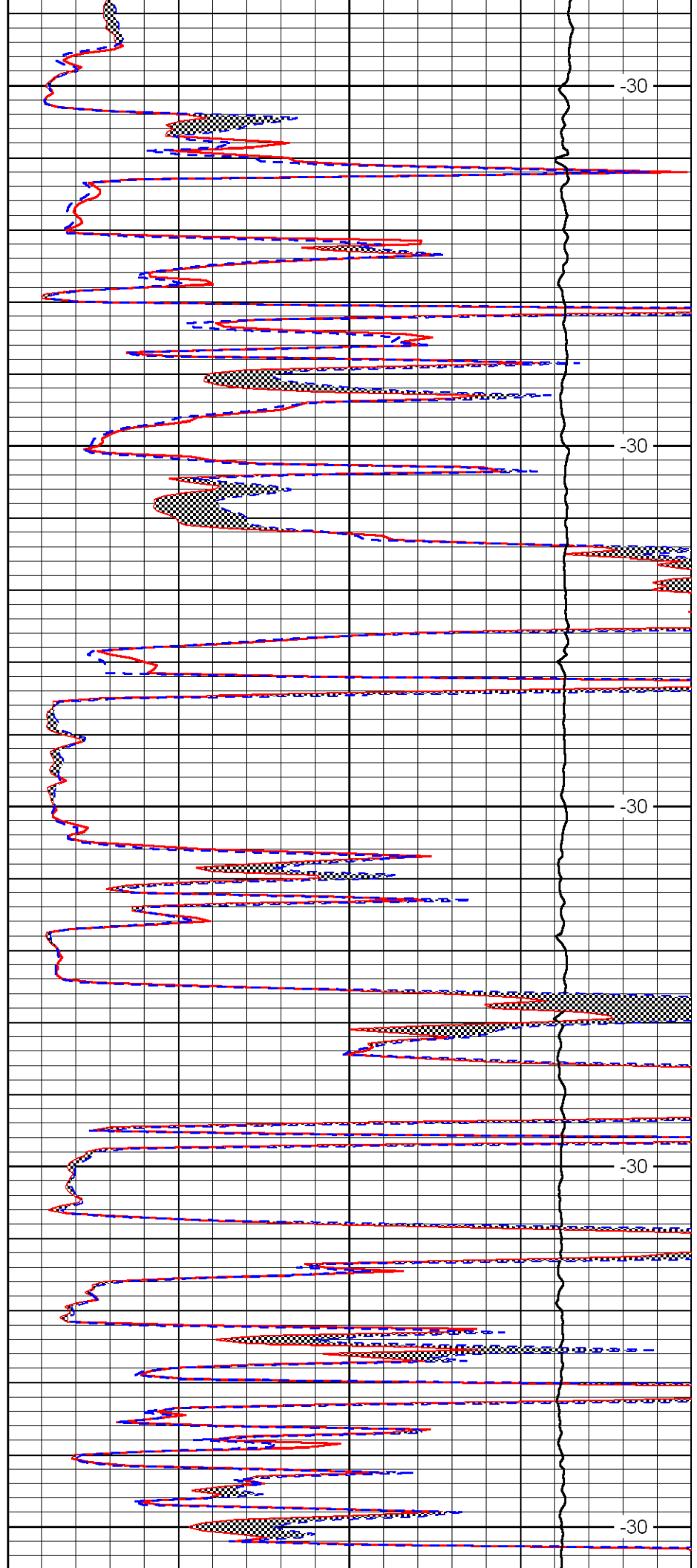
3300

3350

3400

3450

3500



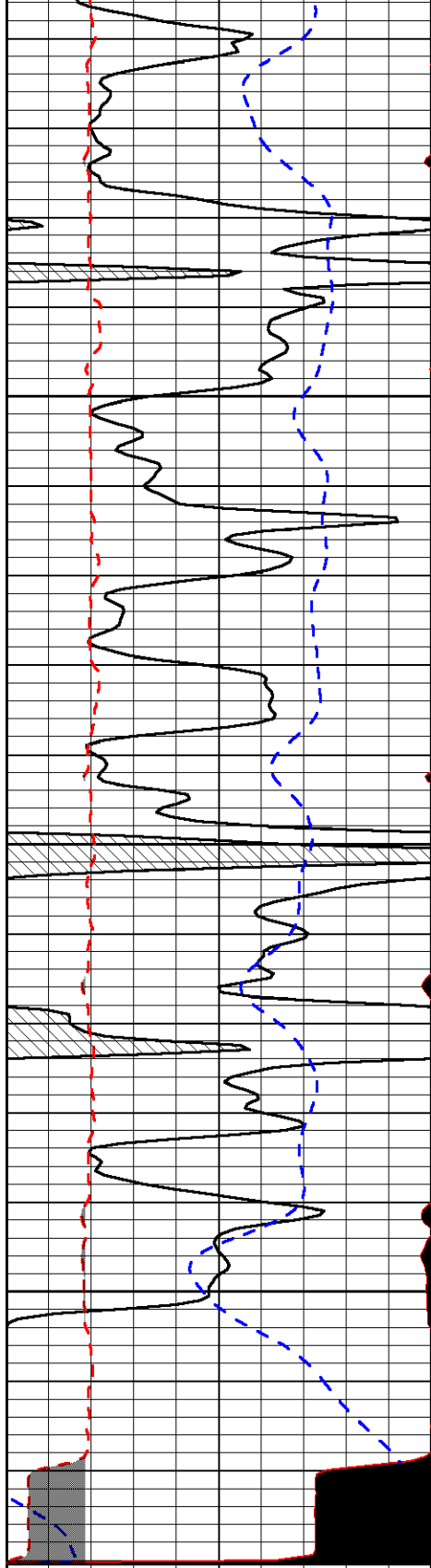
-30

-30

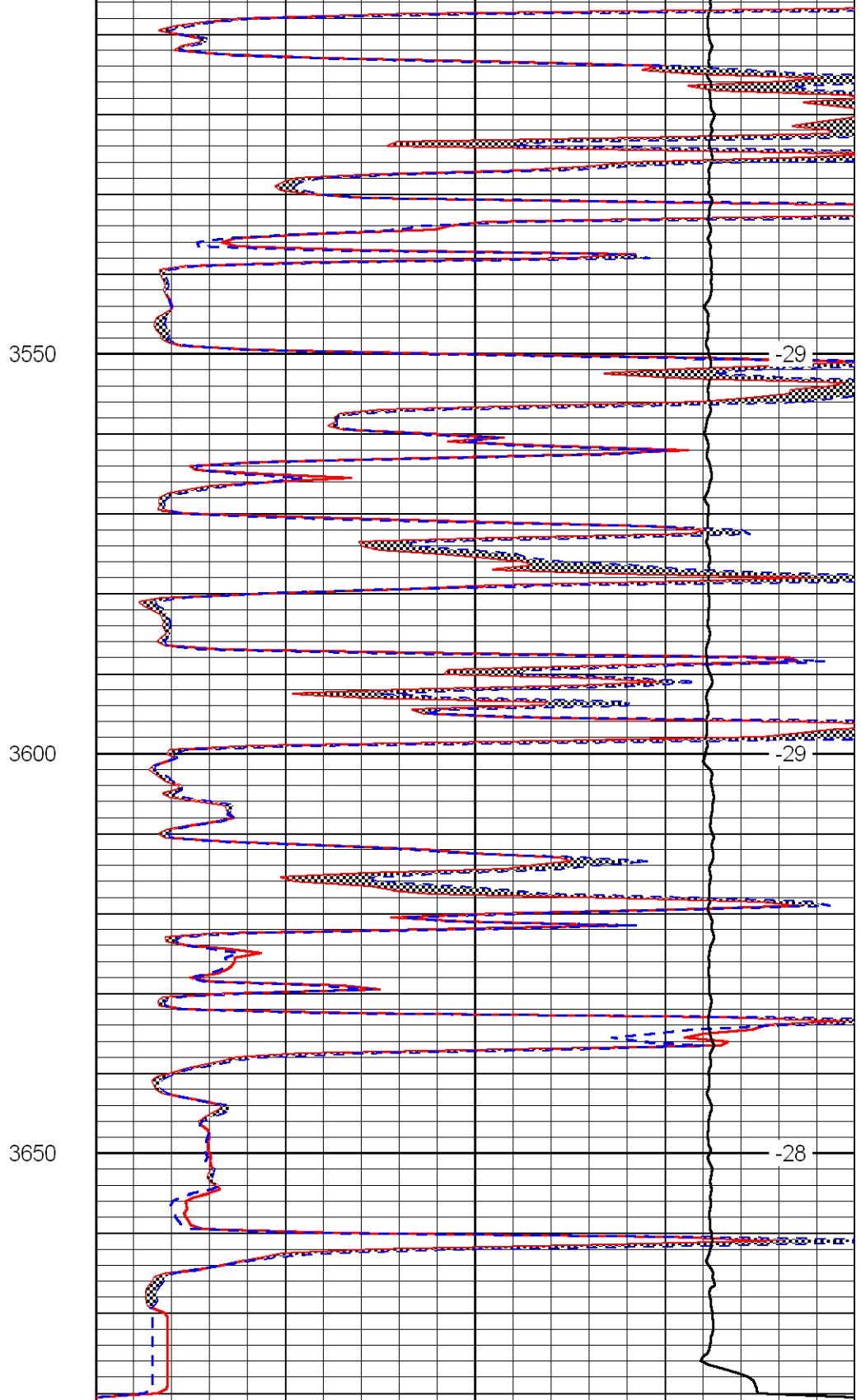
-30

-30

-30



0	Gamma Ray	150
6	MCAL (GAPI)	16
2.875	Mud Cake (GAPI)	7.875
-200	SP	0



0	Micro Inverse 1 X 1	40
0	Micro Normal 2''	40
10000	Line Weight	0
		LSPD