

# LOG-TECH



DIGITAL LOG (785) 625-3858

## Microresistivity Log

API No. 15-051-26312-00-00

Company **TDI, Inc.**  
 Well **Gerstner #1**  
 Field **Dechant South**  
 County **Ellis** State **Kansas**

Location **NE SW NW NW  
775' FNL & 615' FWL**

Sec: **13** Twp: **15S** Rge: **19W**

Other Services  
CNL/CDL  
DIL

Permanent Datum **Ground Level** Elevation **2025**  
 Log Measured From **Kelly Bushing** 10 Ft. Above Perm. Datum  
 Drilling Measured From **Kelly Bushing**

Elevation  
K.B. 2035  
D.F. 2025  
G.L. 2025

Date	6/24/2012
Run Number	Two
Depth Driller	3750
Depth Logger	3752
Bottom Logged Interval	3751
Top Log Interval	2900
Casing Driller	8.625 @ 212.77
Casing Logger	210
Bit Size	7.875
Type Fluid in Hole	Chemical
Salinity, ppm CL	10,300
Density / Viscosity	8.8 53
pH / Fluid Loss	8.0 14.6
Source of Sample	Flowline
Rm @ Meas. Temp	0.50 @ 78
Rmf @ Meas. Temp	0.38 @ 78
Rmc @ Meas. Temp	0.68 @ 78
Source of Rmf / Rmc	Charts
Rm @ BHT	0.34 @ 116
Operating Rig Time	4 Hours
Max Rec. Temp. F	116
Equipment Number	91
Location	Hays
Recorded By	D. Schmidt
Witnessed By	Tom Denning

<<< Fold Here >>>

All interpretations are opinions based on inferences from electrical or other measurements and we cannot and do not guarantee the accuracy or correctness of any interpretation, and we shall not, except in the case of gross or willful negligence on our part, be liable or responsible for any loss, costs, damages, or expenses incurred or sustained by anyone resulting from any interpretation made by any of our officers, agents or employees. These interpretations are also subject to our general terms and conditions set out in our current Price Schedule.

### Comments

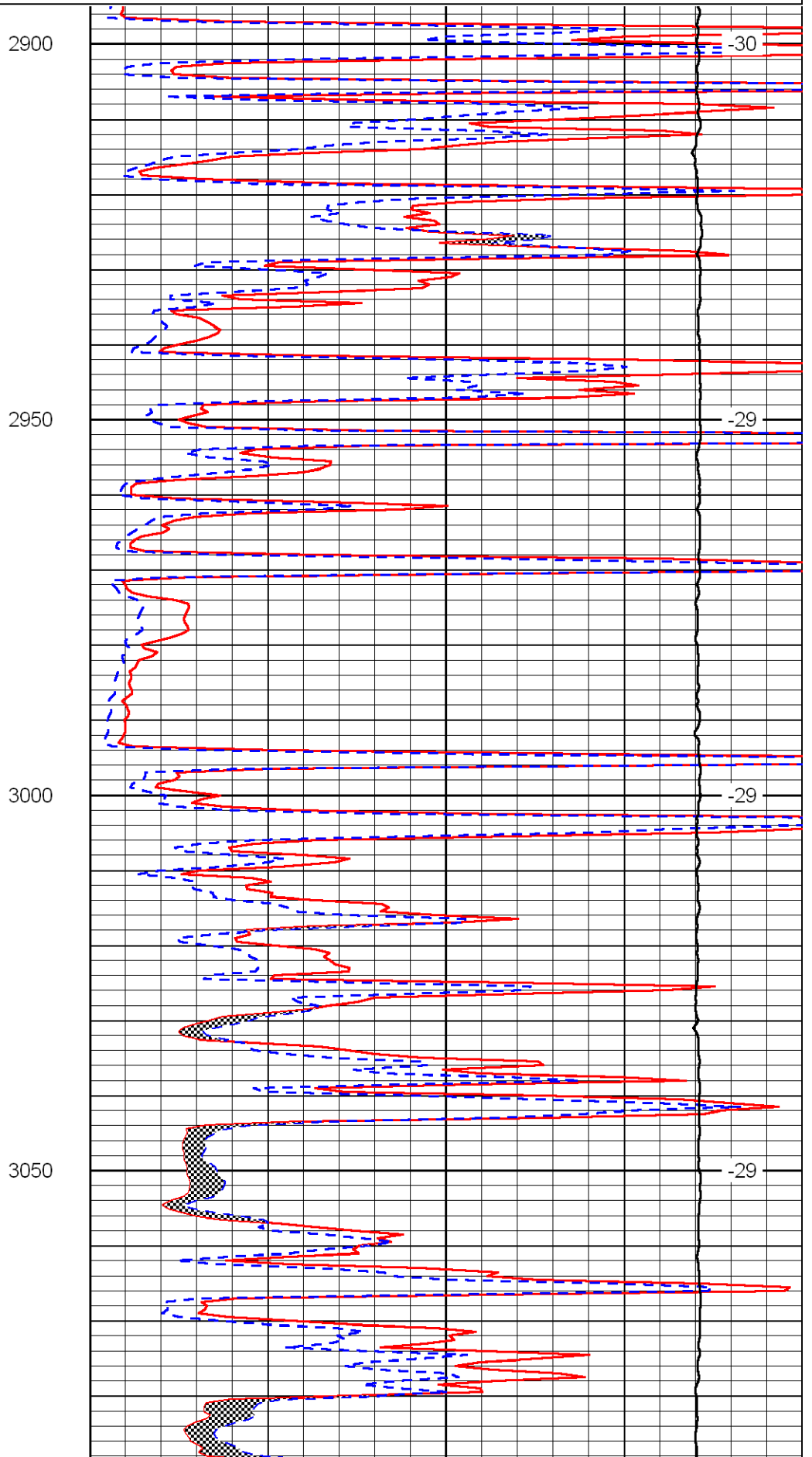
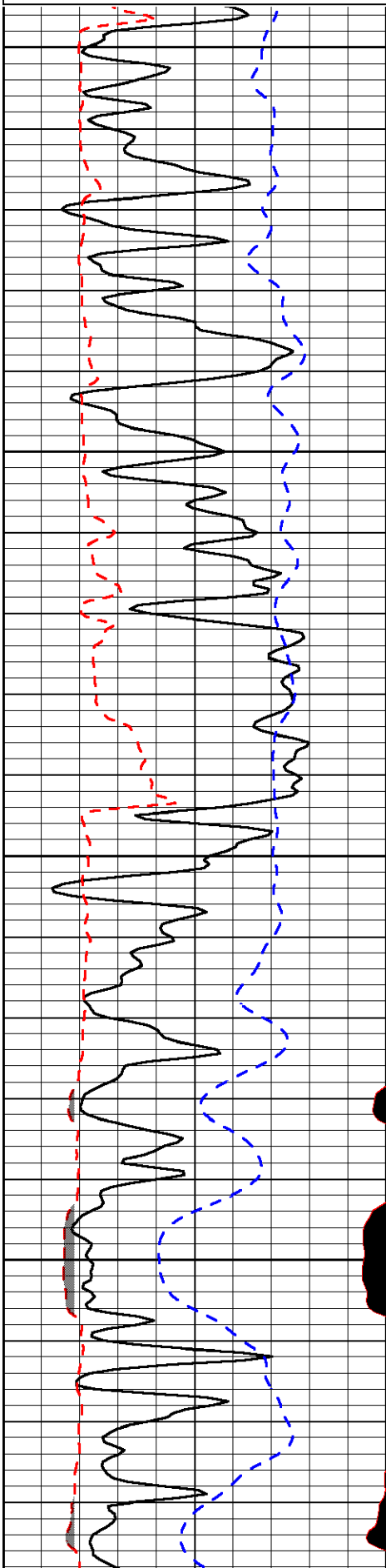
Thank you for using Log-Tech, Inc.  
(785) 625-3858

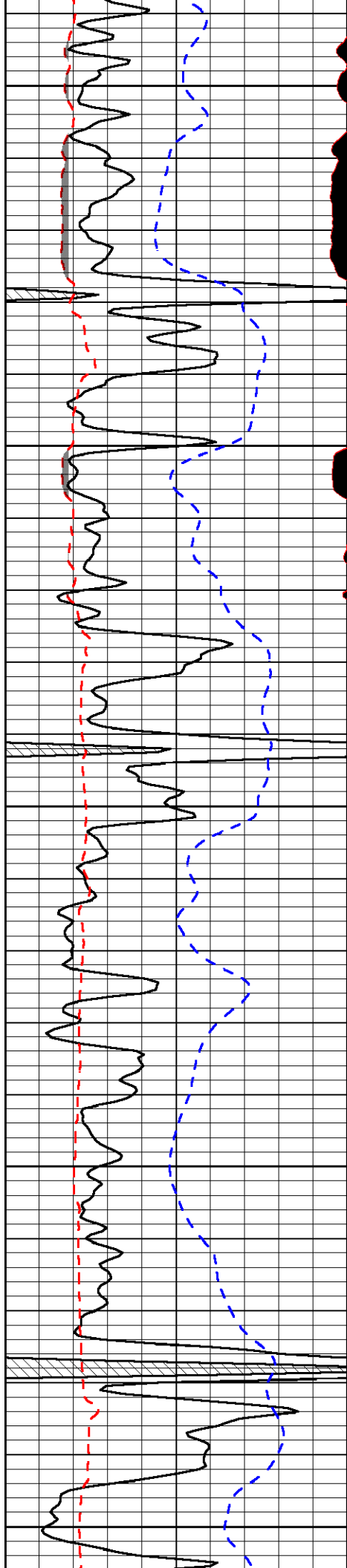
Antonino,  
2 South (100 yards past intersection), East into

Database File: tdi\_062412hd.db  
 Dataset Pathname: dil/tdstack  
 Presentation Format: micro  
 Dataset Creation: Sun Jun 24 04:10:00 2012  
 Charted by: Depth in Feet scaled 1:240

0	Gamma Ray	150
6	MCAL (GAPI)	16
2.875	Mud Cake (GAPI)	7.875
-200	SP	0

0	Micro Inverse 1 X 1	40
0	Micro Normal 2"	40
10000	Line Weight	0
		LSPD





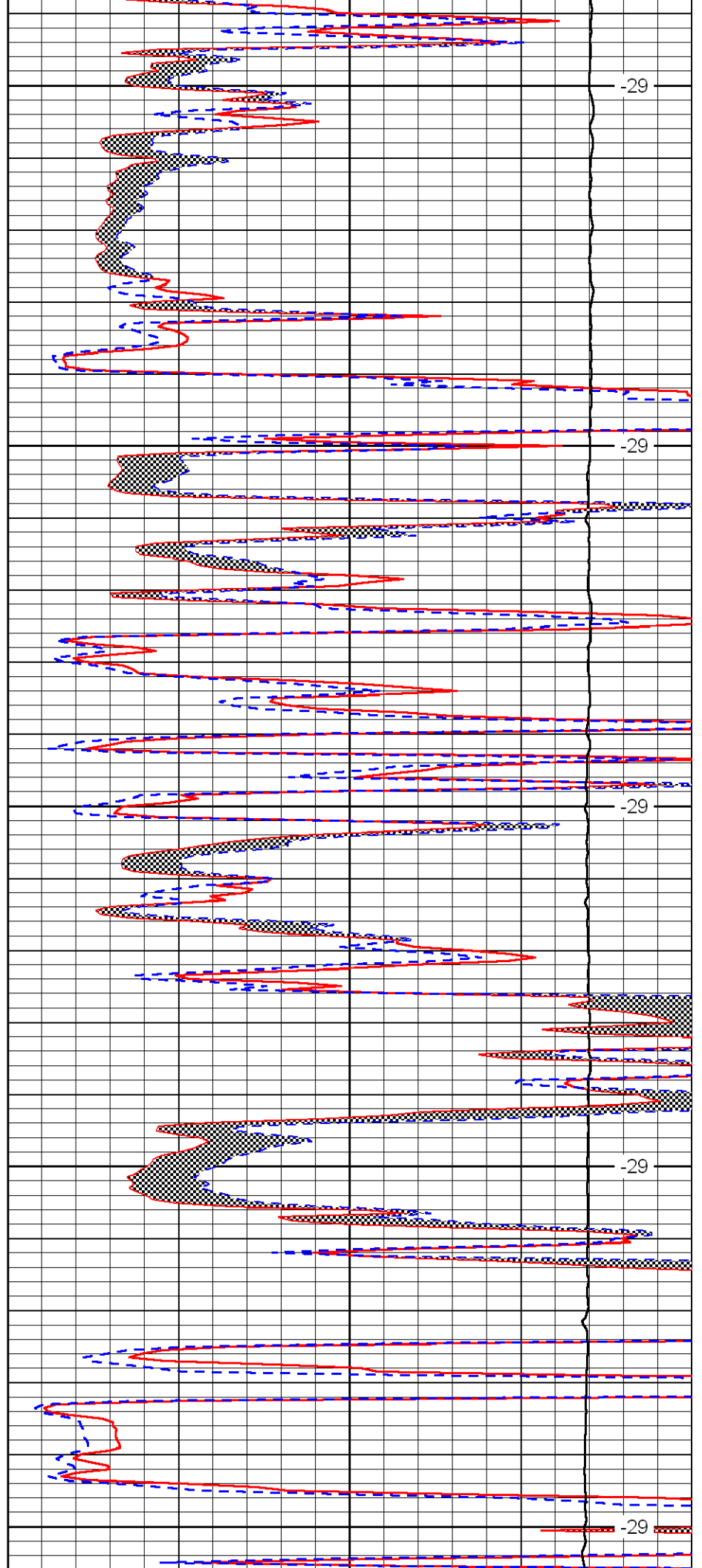
3100

3150

3200

3250

3300



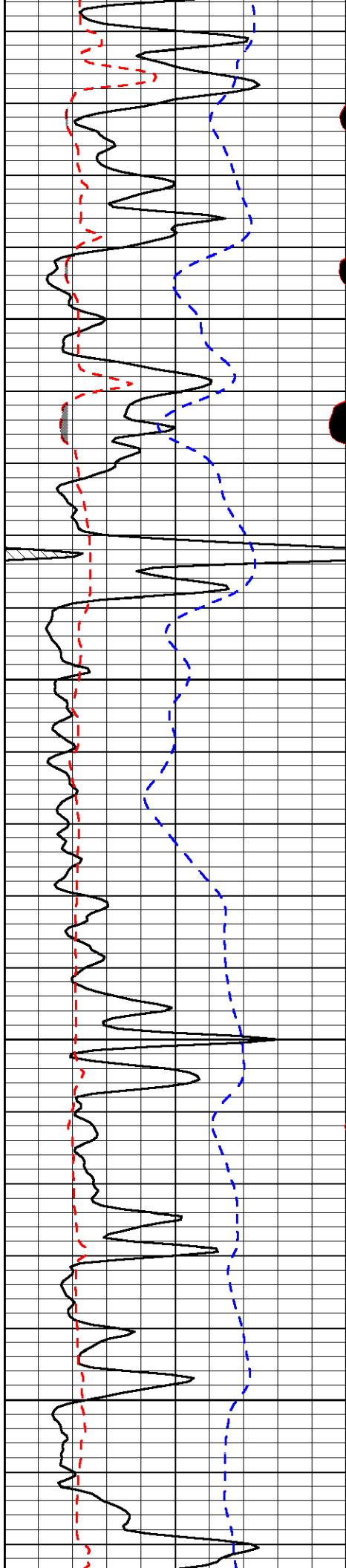
-29

-29

-29

-29

-29

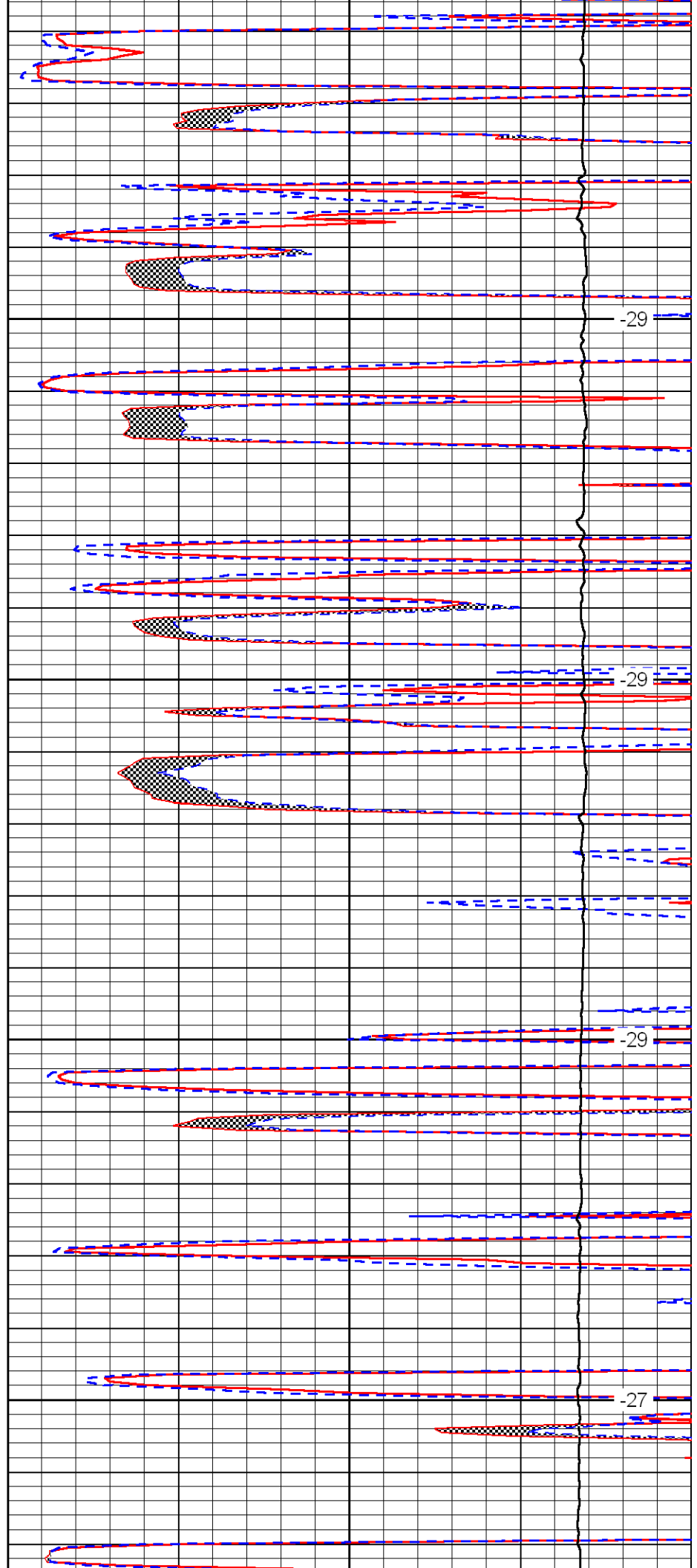


3350

3400

3450

3500

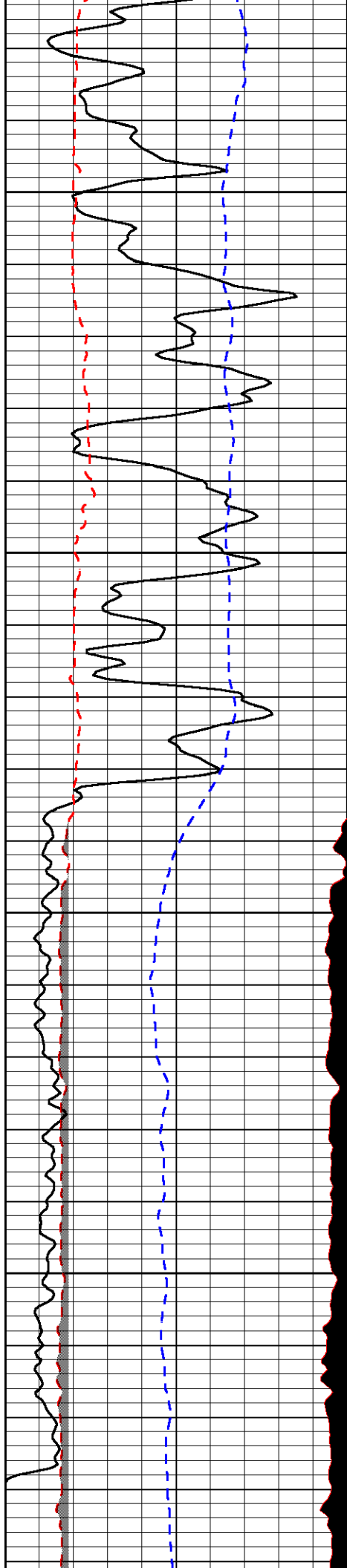


-29

-29

-29

-27

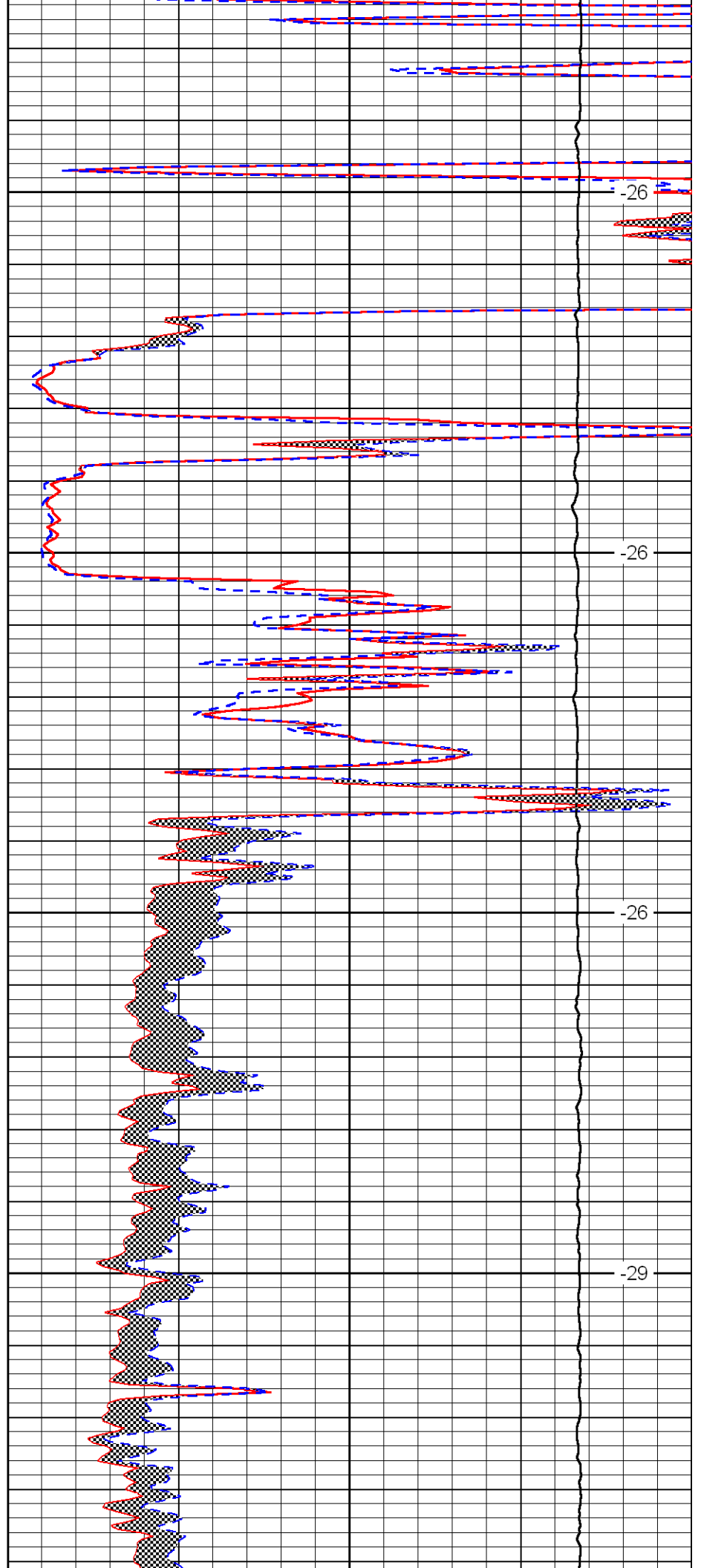


3550

3600

3650

3700

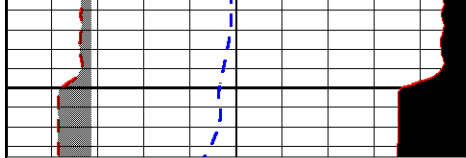


-26

-26

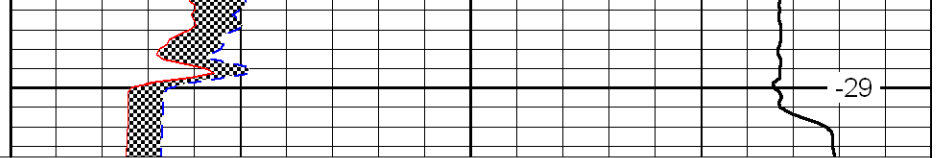
-26

-29



3750

0	Gamma Ray	150
6	MCAL (GAPI)	16
2.875	Mud Cake (GAPI)	7.875
-200	SP	0



-29

0	Micro Inverse 1 X 1	40
0	Micro Normal 2"	40
10000	Line Weight	0

LSPD