



(785) 625-3858

Sonic Cement
Bond Log

15-171-20883-00-00

Company Shakespeare Oil Company, Inc.

Well Carson No. 1-25

Field Wildcat

County Scott

State Kansas

Location

1540' FNL & 1130' FWL

Other Services
Perforate

Sec: 25 Twp: 16S Rge: 34W

Elevation

Permanent Datum Ground Level Elevation 3104

Log Measured From Kelly Bushing 10 Ft. Above Perm. Datum

K.B. 3114
D.F. 3112
G.L. 3104

Drilling Measured From Kelly Bushing

Run Number One

Date Survey 6/8/2012

Date Cementing 6/5/2012

Type Cementing Operation Primary

Depth Driller 4880

Depth Logger 4832

Logged Interval 4830 to 3450

Casing Driller 4.5 @ T.D.

Float Collar -- D.V. Tool 4.5 @

Squeeze Depth 4.5 @

Amount & Type Cement 4.5 @

Amount & Type Admix 4.5 @

Type Fluid In Hole Water

Fluid Level Full

Salinity PPM CL 4.5 @

Weight lb/gal -- Vis. 4.5 @

Approx. Logged Cement Top 3650

Calculated Cement Top 4.5 @

Max. Hole Temperature 113

Tool No. D-1

Spacing Recorded 3-5

Equipment -- Location 72 Hays

Recorded By K. Ladrigan

Witnessed By Tom Larson

<<< Fold Here >>>

All interpretations are opinions based on inferences from electrical or other measurements and we cannot and do not guarantee the accuracy or correctness of any interpretation, and we shall not, except in the case of gross or willful negligence on our part, be liable or responsible for any loss, costs, damages, or expenses incurred or sustained by anyone resulting from any interpretation made by any of our officers, agents or employees. These interpretations are also subject to our general terms and conditions set out in our current Price Schedule.

Comments

Thank you for using Log-Tech (785) 625-3858

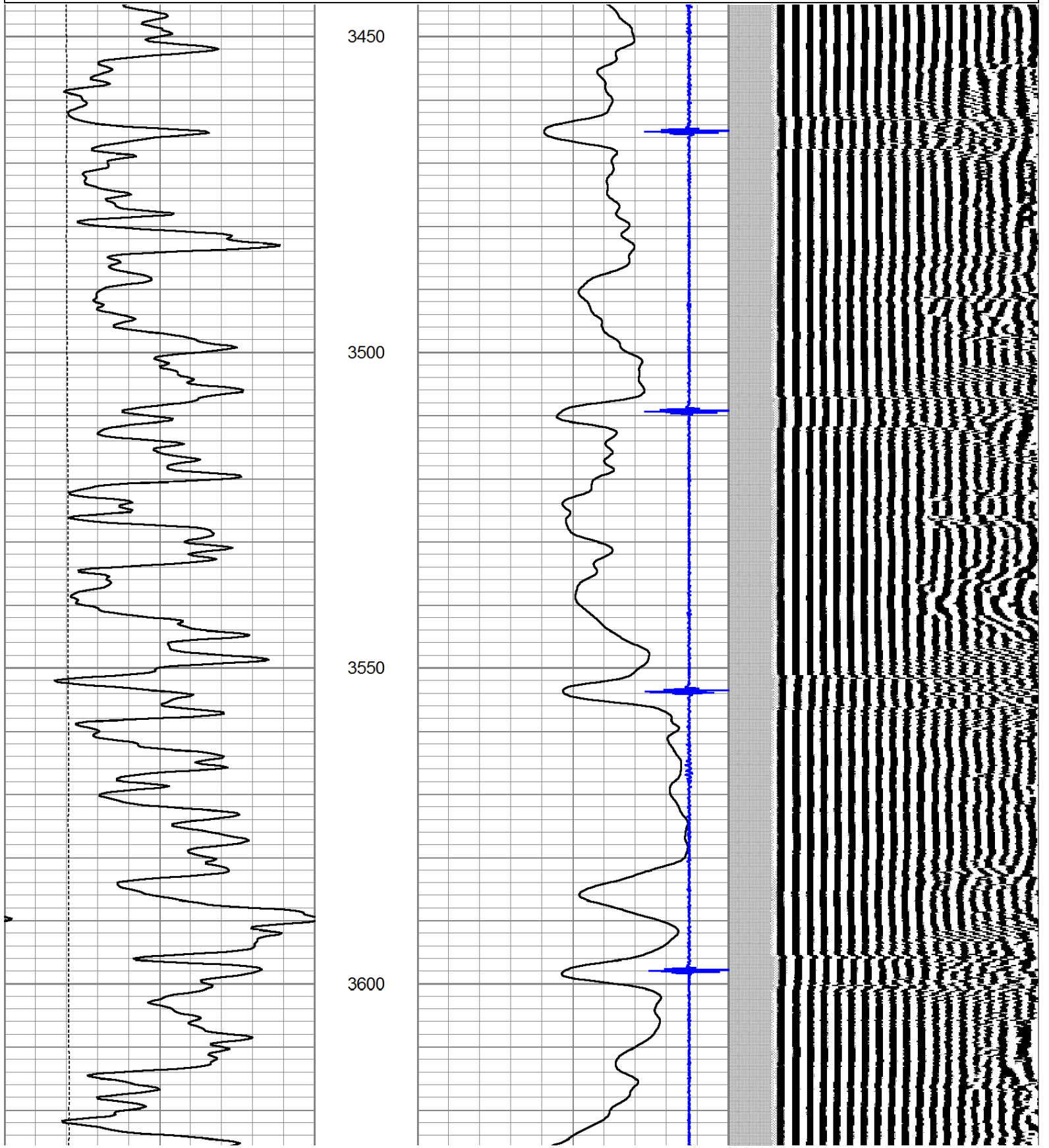
Pence, KS., 2 East to Eagle Road, 1.5 South
East Into.

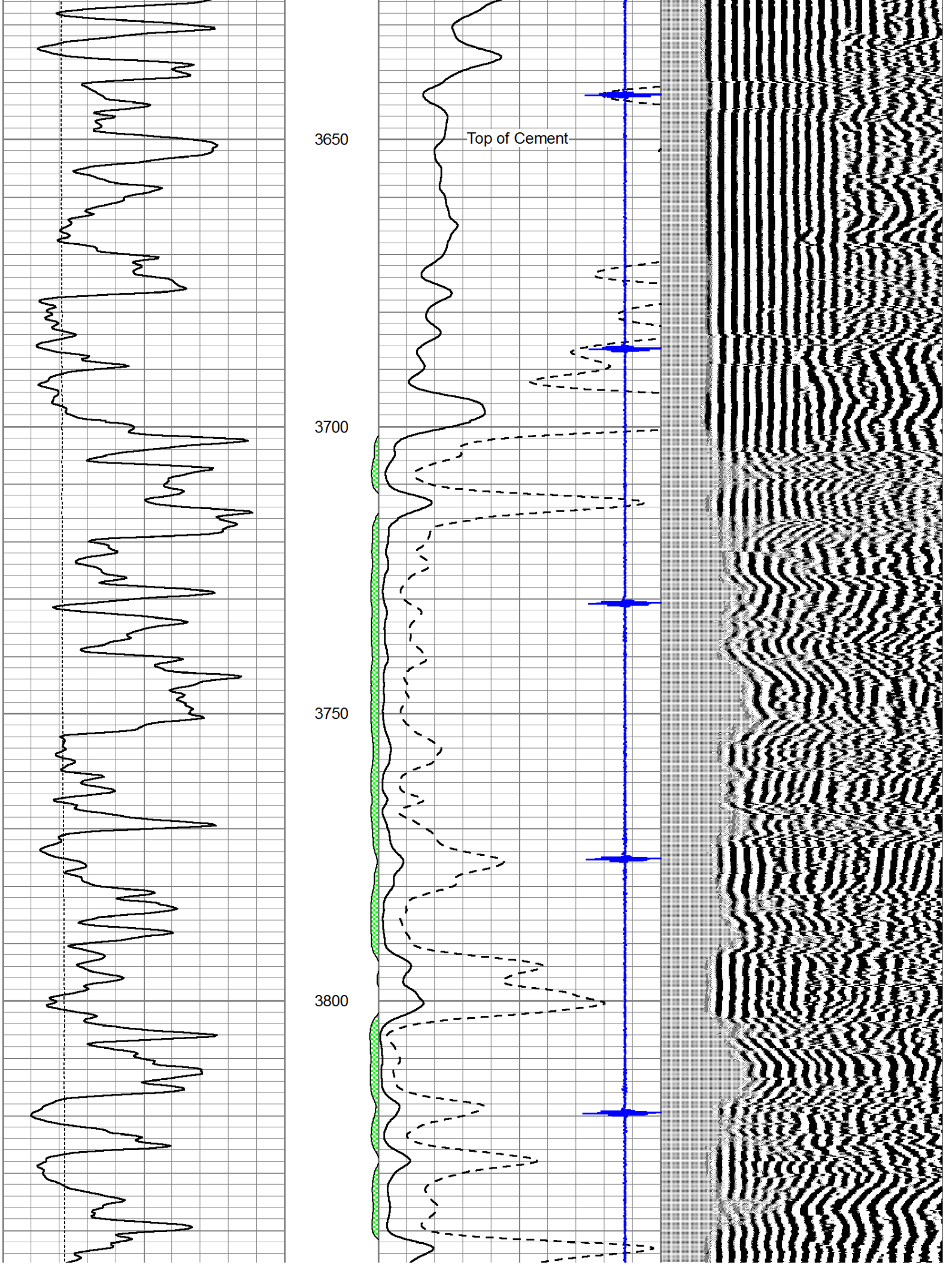


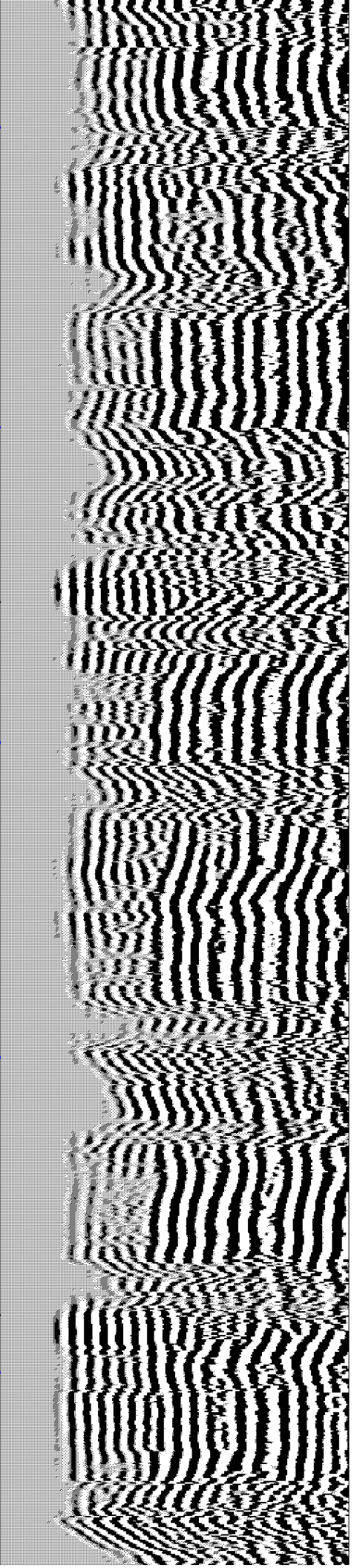
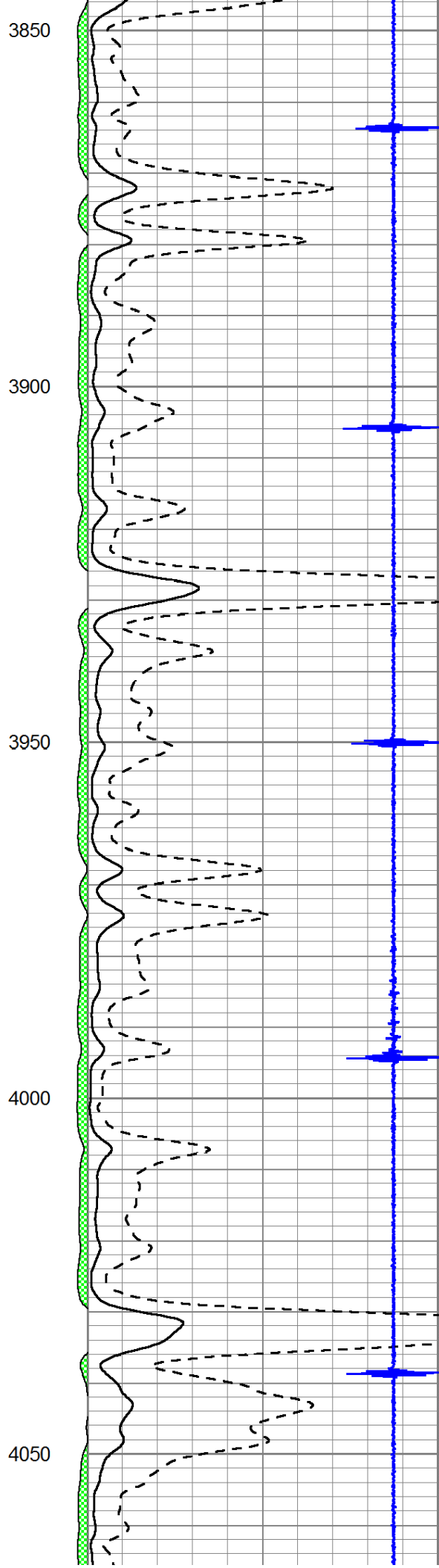
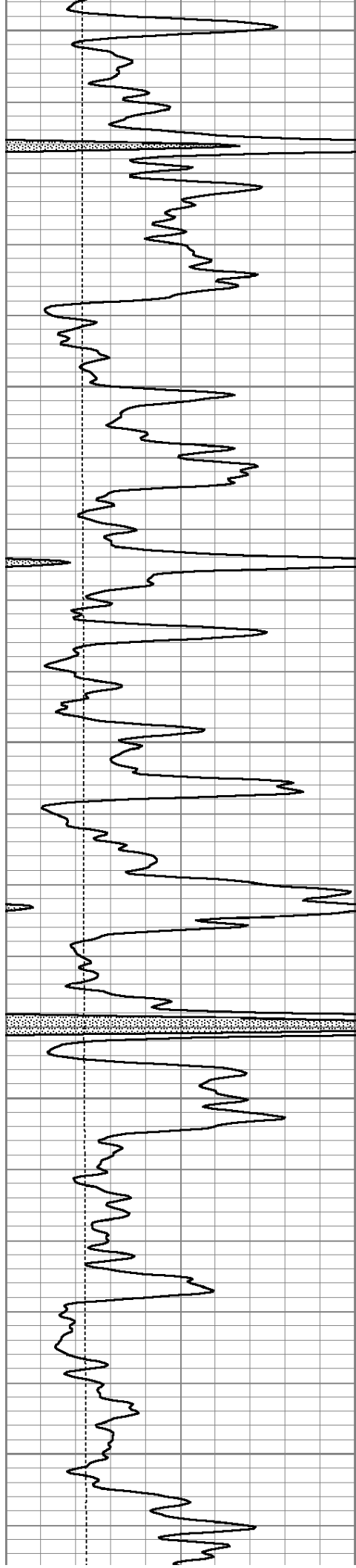
Main Pass

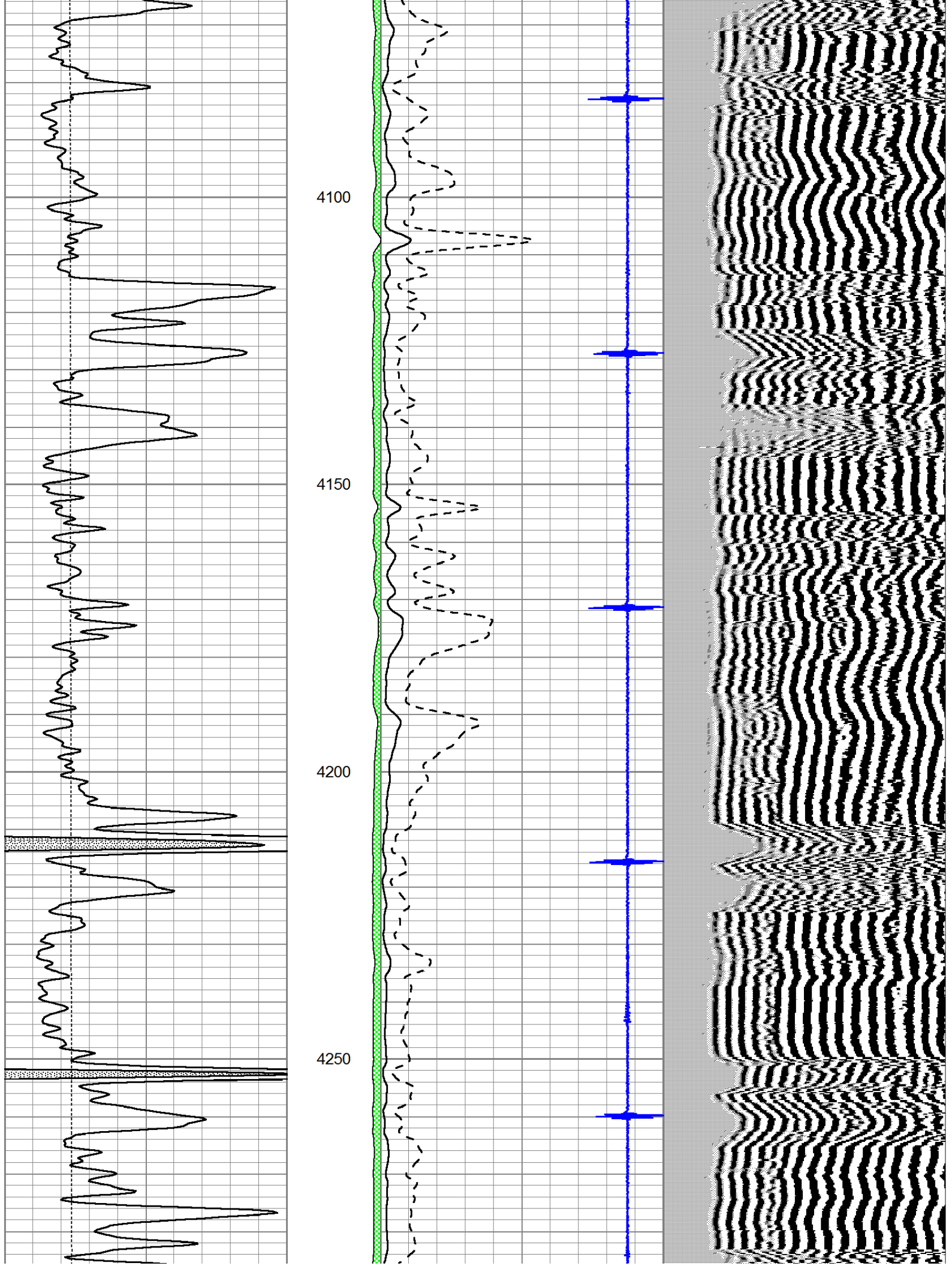
Database File: shake_carson1-25.db
 Dataset Pathname: Carson1-2/grcbl/pass4.2
 Presentation Format: cldig
 Dataset Creation: Fri Jun 08 11:53:08 2012
 Charted by: Depth in Feet scaled 1:240

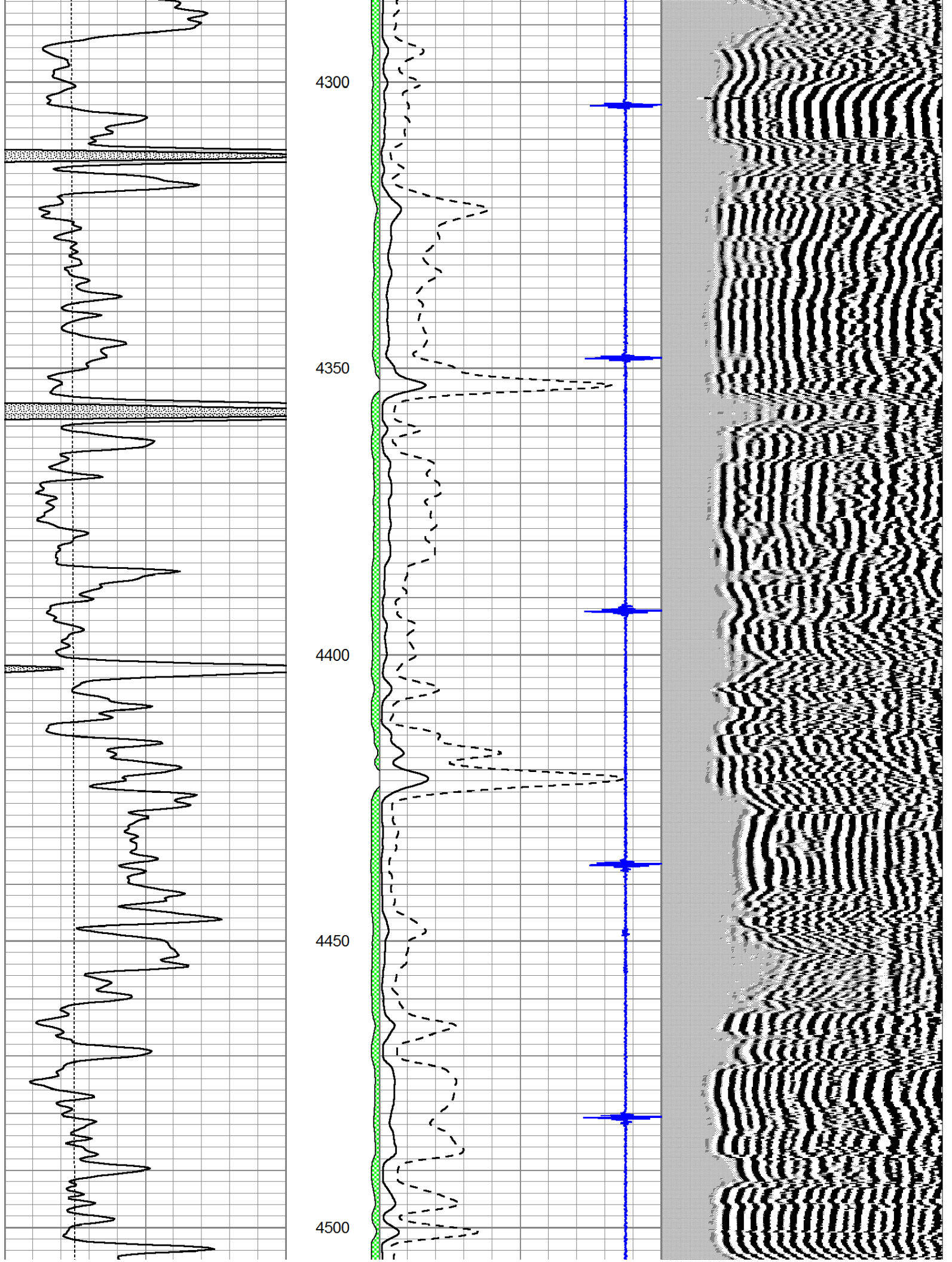
0	GR (GAPI)	150	AMP3	0	Amplitude (mV)	100	200	Variable Density	1200
0	LTEN (lb)	5000	(mV)	0	Amplified Amplitude (mV)	20			
			-100 10	7	Collar Locator	-1			

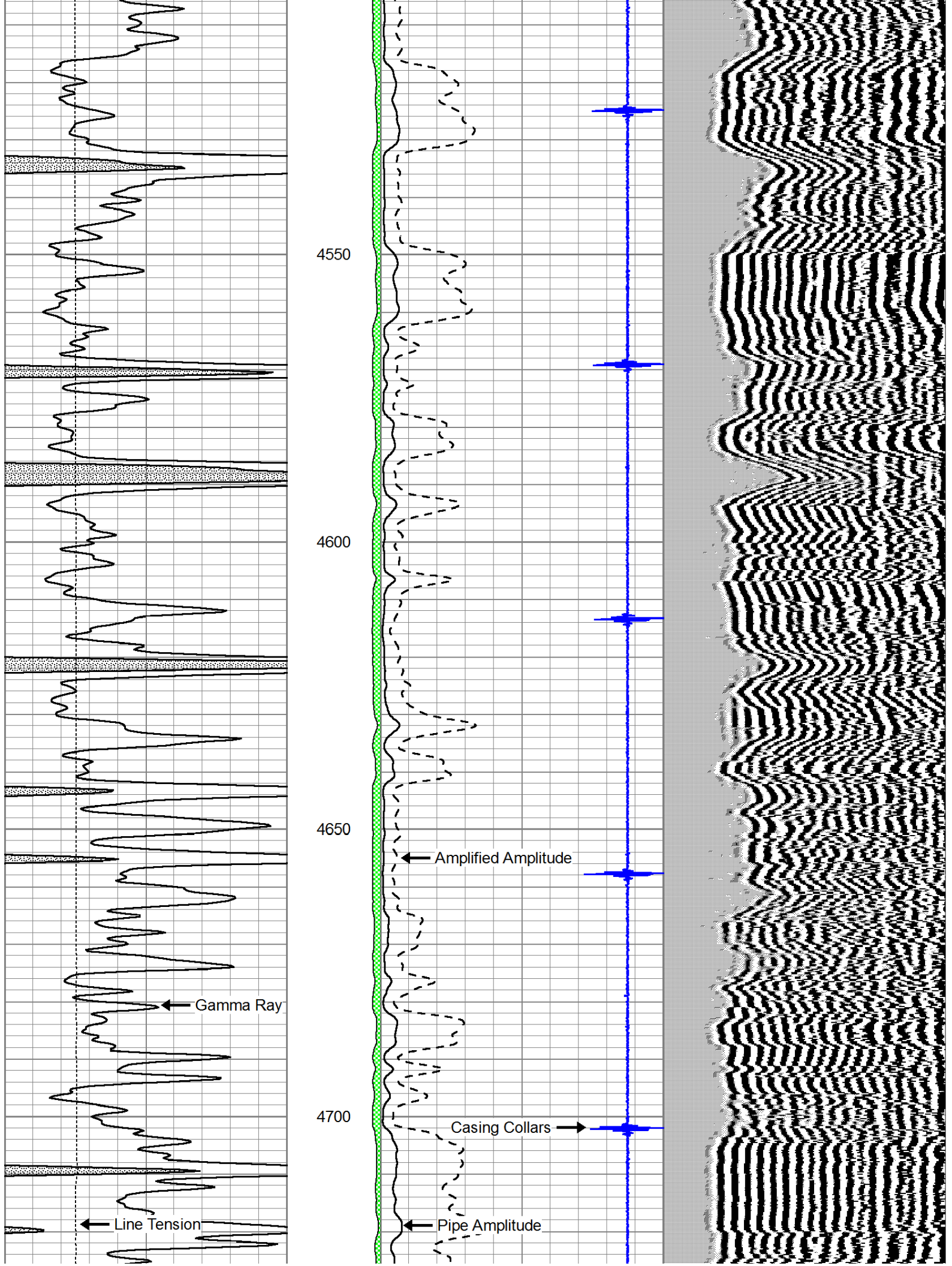


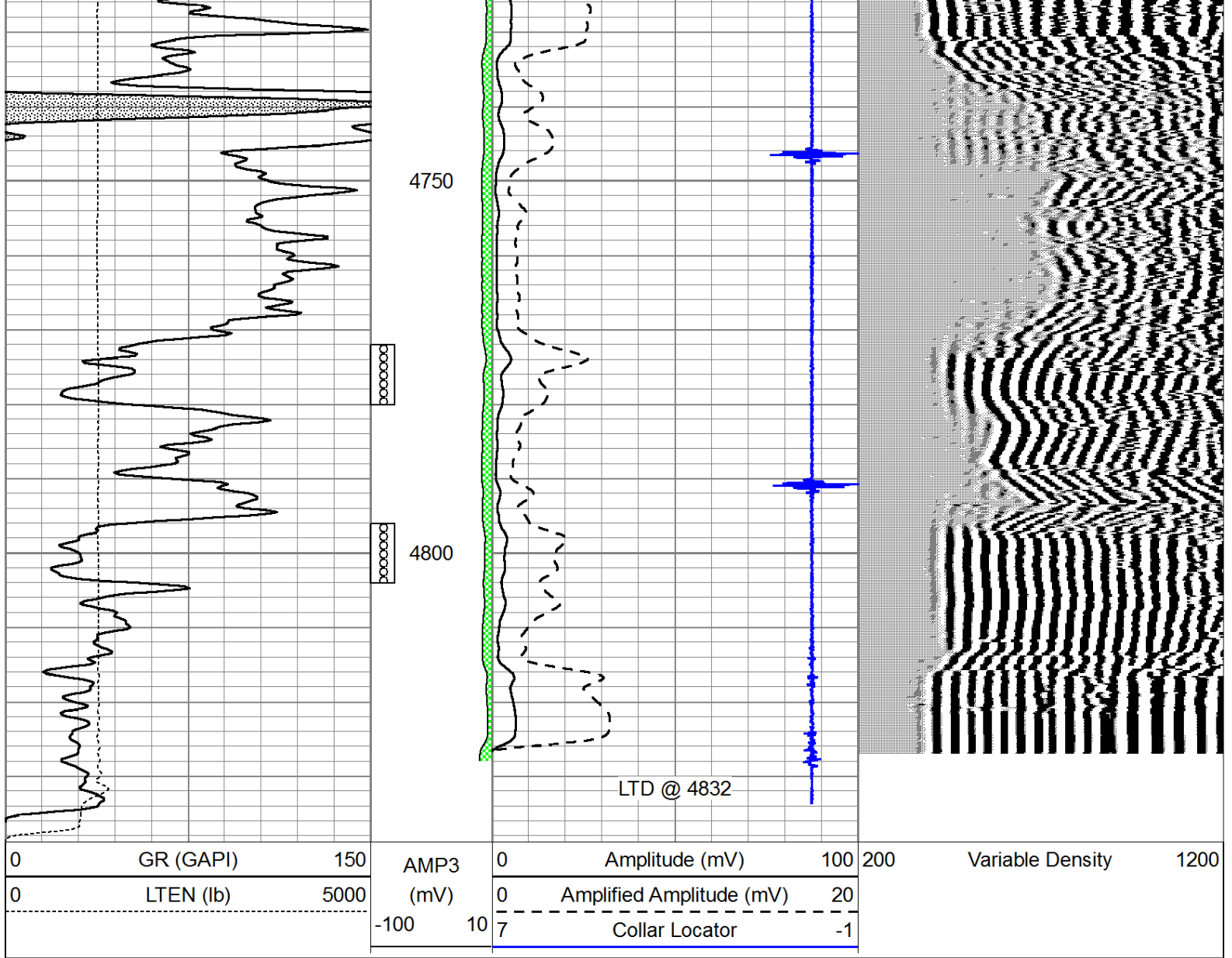












Repeat Section

Database File: shake_carson1-25.db
 Dataset Pathname: Carson1-2/grcbl/pass3
 Presentation Format: cbl dig
 Dataset Creation: Fri Jun 08 10:59:15 2012 by Log SCH 111116
 Charted by: Depth in Feet scaled 1:240

0	GR (GAPI)	150	AMP3	0	Amplitude (mV)	100	200	Variable Density	1200
0	LTEN (lb)	5000	(mV)	0	Amplified Amplitude (mV)	20			
			-100 10	7	Collar Locator	-1			

