



Danielson 25-34-8 1H 2"MD

(Scale: 2":100' (100'))

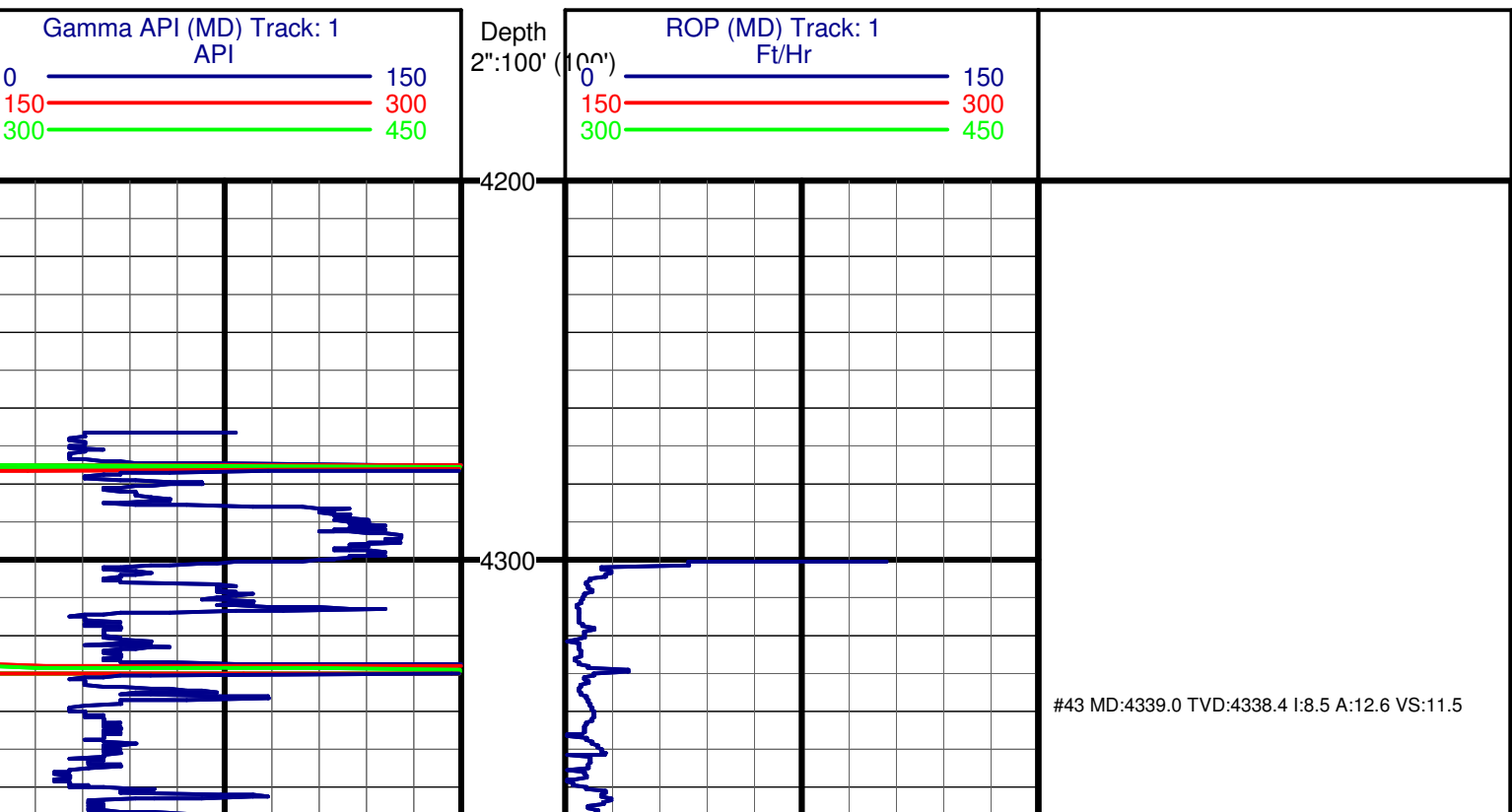
Company: Chesapeake Operation
 Well: Danielson 25-34-8 1H
 Field: Mid Continent North
 Well ID: 15-077-21749
 Job Number: 03707-431-25
 Location: North of Manchester
 Operator 1: Monte Silhavy
 Operator 2: Dillon Gillies
 State: KS
 County: Harper
 Country: USA
 Elev KB: 1327
 Elev DF: 1327
 Elev GL: 1312

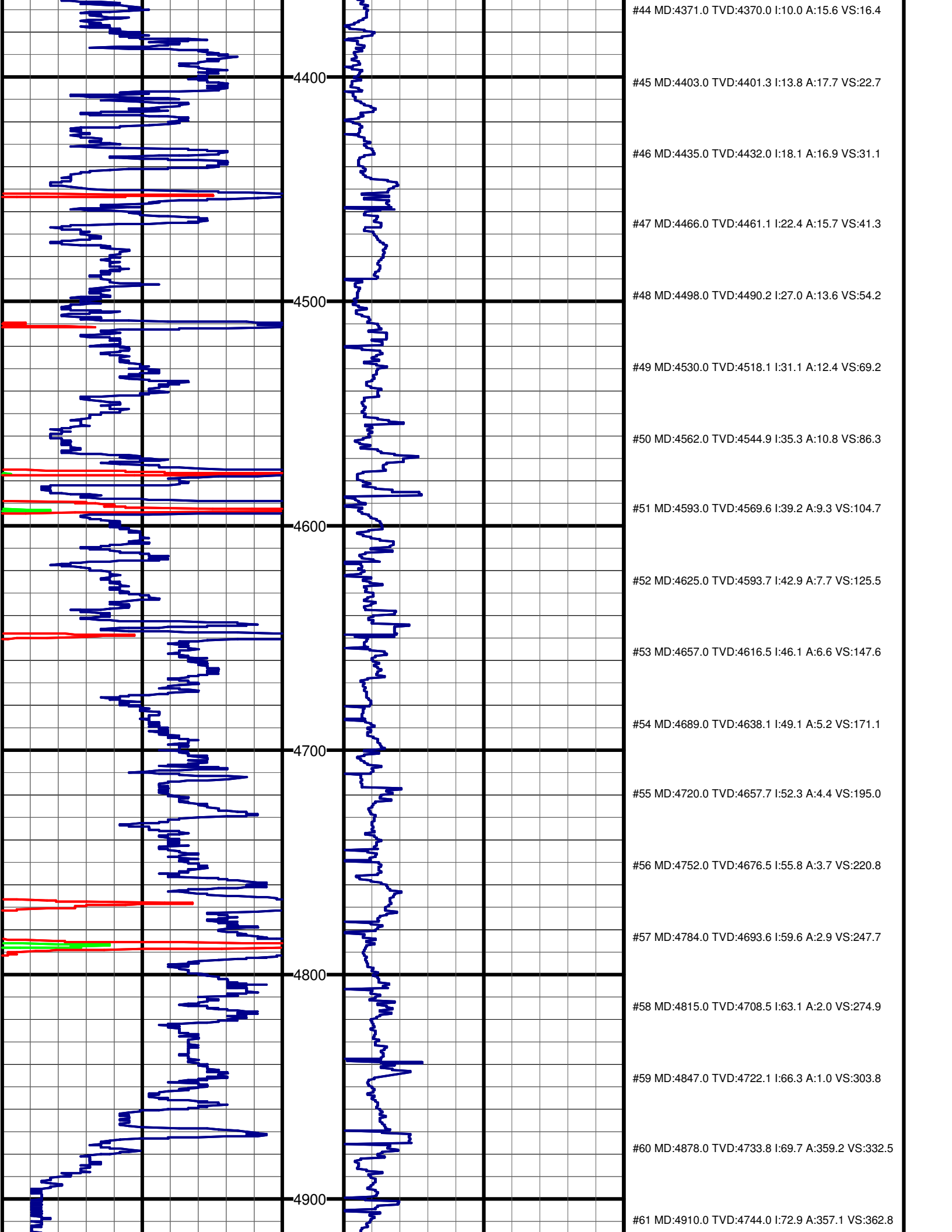
Comment 1:
 Comment 2:
 Comment 3:
 Comment 4:
 Comment 5:

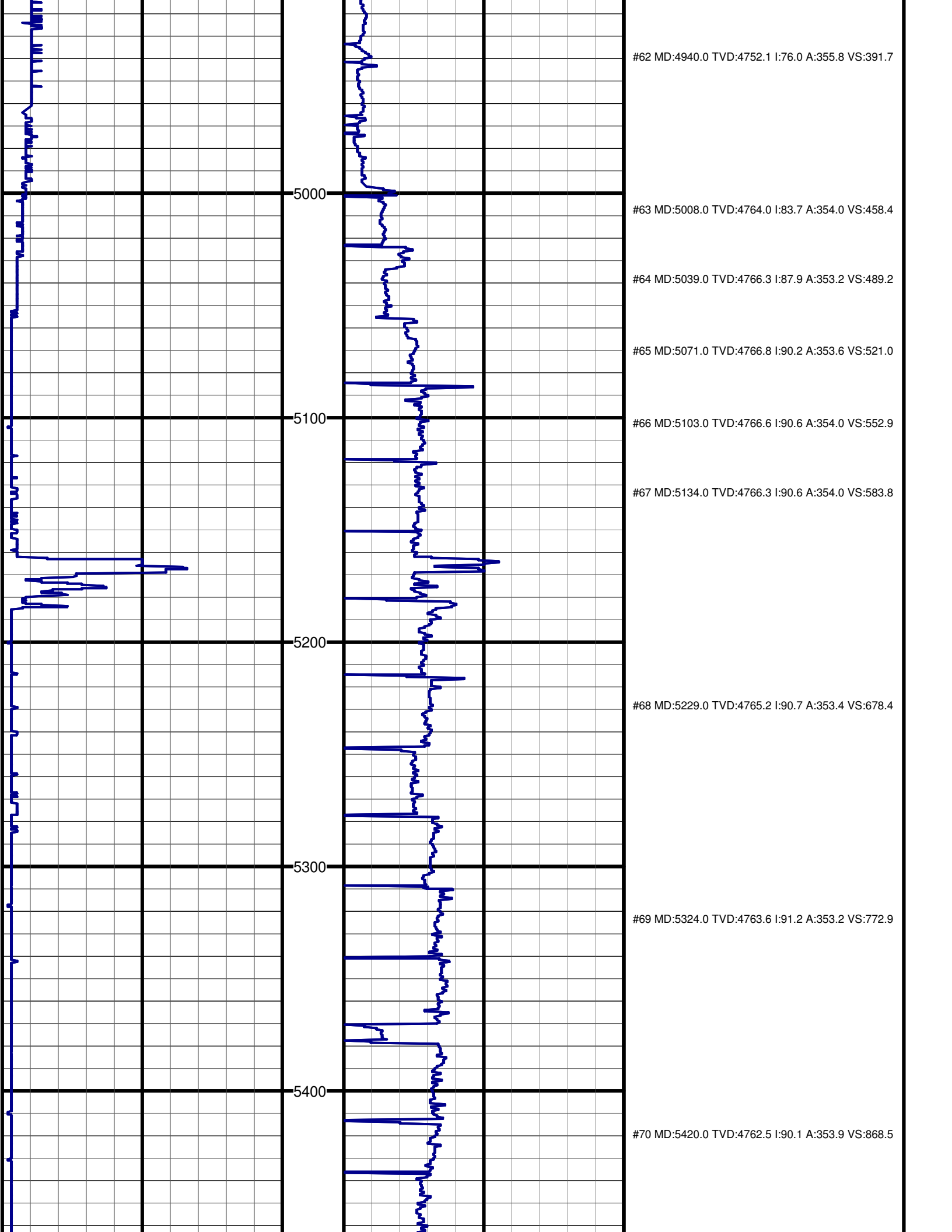
Hole Data			Casing Record		
Size	From	To	Size	From	To
12 1/4	0'	755'	9 5/8	0'	755'
8 3/4	755'	4995'	7"	0'	4995'
6 1/8	4995'	9233'			

Tool Run Data		Run #1	Run #2	Run #3	Run #4	Run #5
Tool S/N	6057	24X3	24X3	6057	6323	
Cal Factor	5.299	5.299	2.753	2.753	2.753	
Gamma Offset	34	41	33	39	38	
Start Depth	4300	4383	4995	5657	7027	
Start Date	05/14/2012	05/15/2012	05/20/2012	05/21/2012	05/25/2012	
Start Time	03:00	01:00	04:30	13:45	06:15	
End Depth	4383	4995	5657	7027	9233	
End Date	05/15/2012	05/18/2012	05/21/2012	05/24/2012	05/27/2012	
End Time	00:00	13:45	12:00	04:45	09:00	

#43 MD:4339.0 TVD:4338.4 I:8.5 A:12.6 VS:11.5







#62 MD:4940.0 TVD:4752.1 I:76.0 A:355.8 VS:391.7

5000

#63 MD:5008.0 TVD:4764.0 I:83.7 A:354.0 VS:458.4

#64 MD:5039.0 TVD:4766.3 I:87.9 A:353.2 VS:489.2

#65 MD:5071.0 TVD:4766.8 I:90.2 A:353.6 VS:521.0

5100

#66 MD:5103.0 TVD:4766.6 I:90.6 A:354.0 VS:552.9

#67 MD:5134.0 TVD:4766.3 I:90.6 A:354.0 VS:583.8

5200

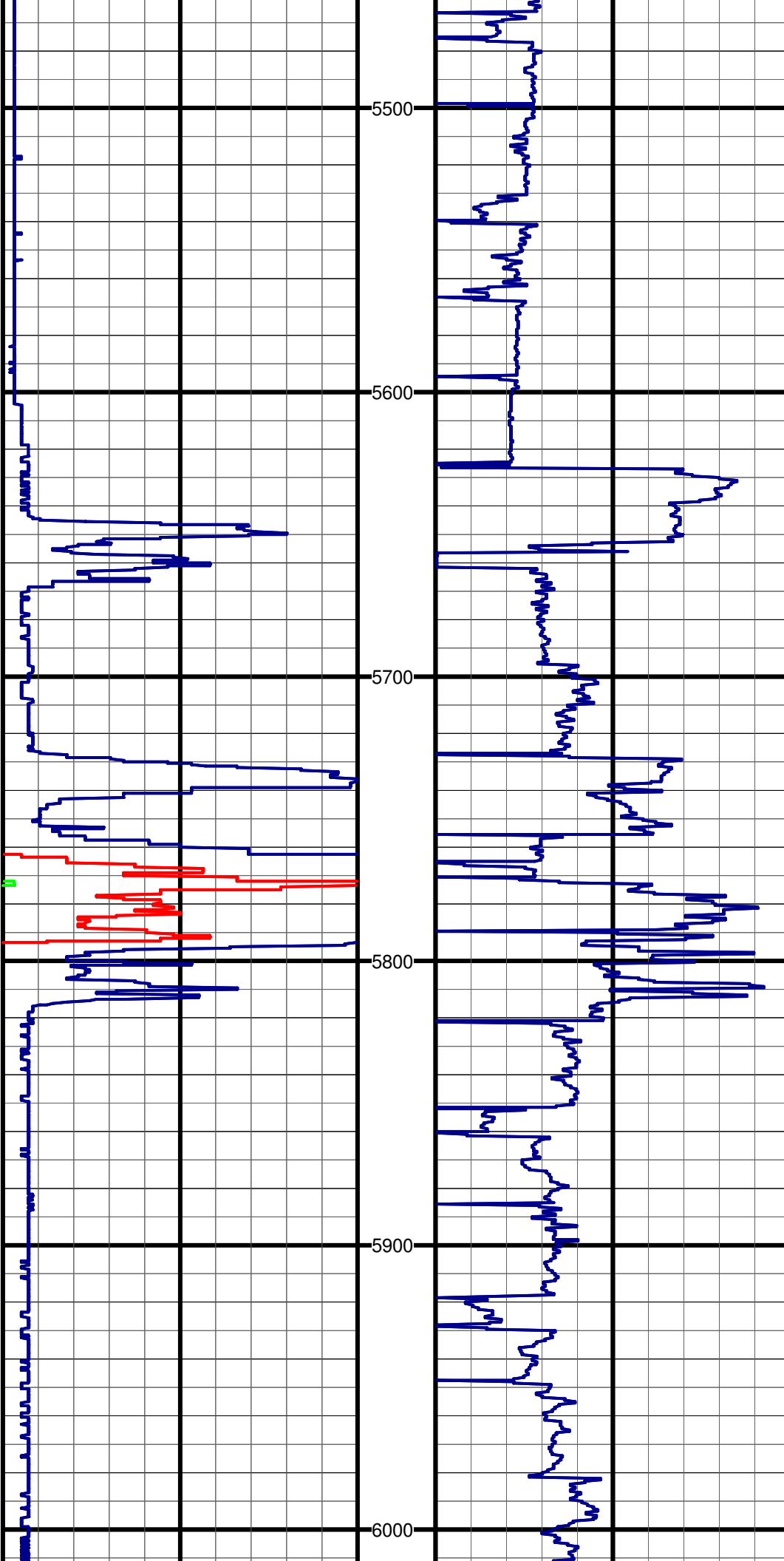
#68 MD:5229.0 TVD:4765.2 I:90.7 A:353.4 VS:678.4

5300

#69 MD:5324.0 TVD:4763.6 I:91.2 A:353.2 VS:772.9

5400

#70 MD:5420.0 TVD:4762.5 I:90.1 A:353.9 VS:868.5



#71 MD:5515.0 TVD:4762.0 I:90.5 A:355.4 VS:963.2

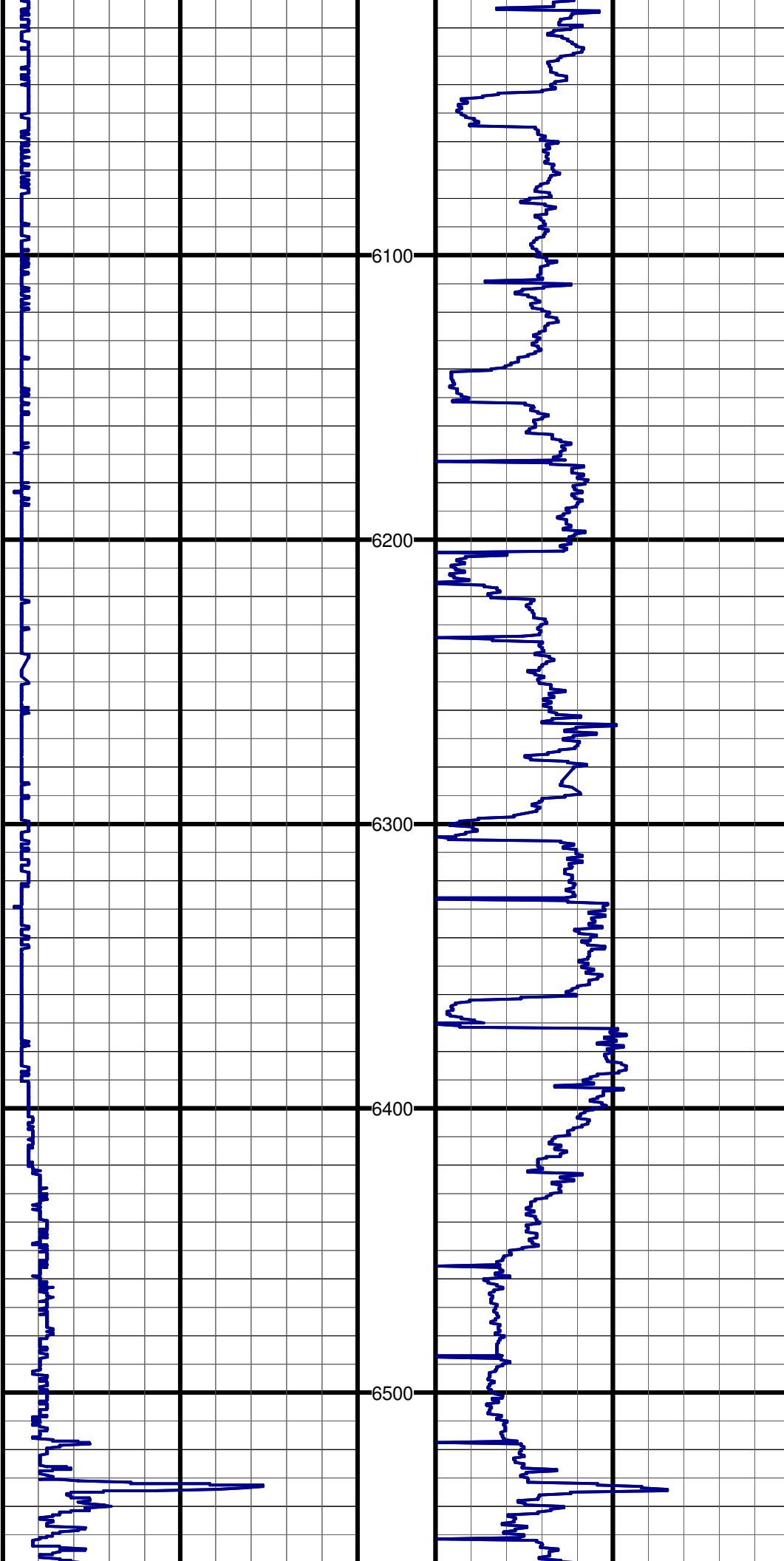
#72 MD:5608.0 TVD:4762.7 I:88.7 A:357.1 VS:1056.1

#73 MD:5703.0 TVD:4763.9 I:89.8 A:356.7 VS:1151.0

#74 MD:5798.0 TVD:4764.1 I:90.0 A:357.7 VS:1246.0

#75 MD:5893.0 TVD:4763.8 I:90.4 A:358.6 VS:1341.0

#76 MD:5989.0 TVD:4763.4 I:90.1 A:359.3 VS:1437.0



#77 MD:6084.0 TVD:4763.4 I:89.8 A:359.6 VS:1532.0

6100

#78 MD:6179.0 TVD:4764.1 I:89.4 A:359.9 VS:1627.0

6200

#79 MD:6275.0 TVD:4765.2 I:89.3 A:0.1 VS:1722.9

6300

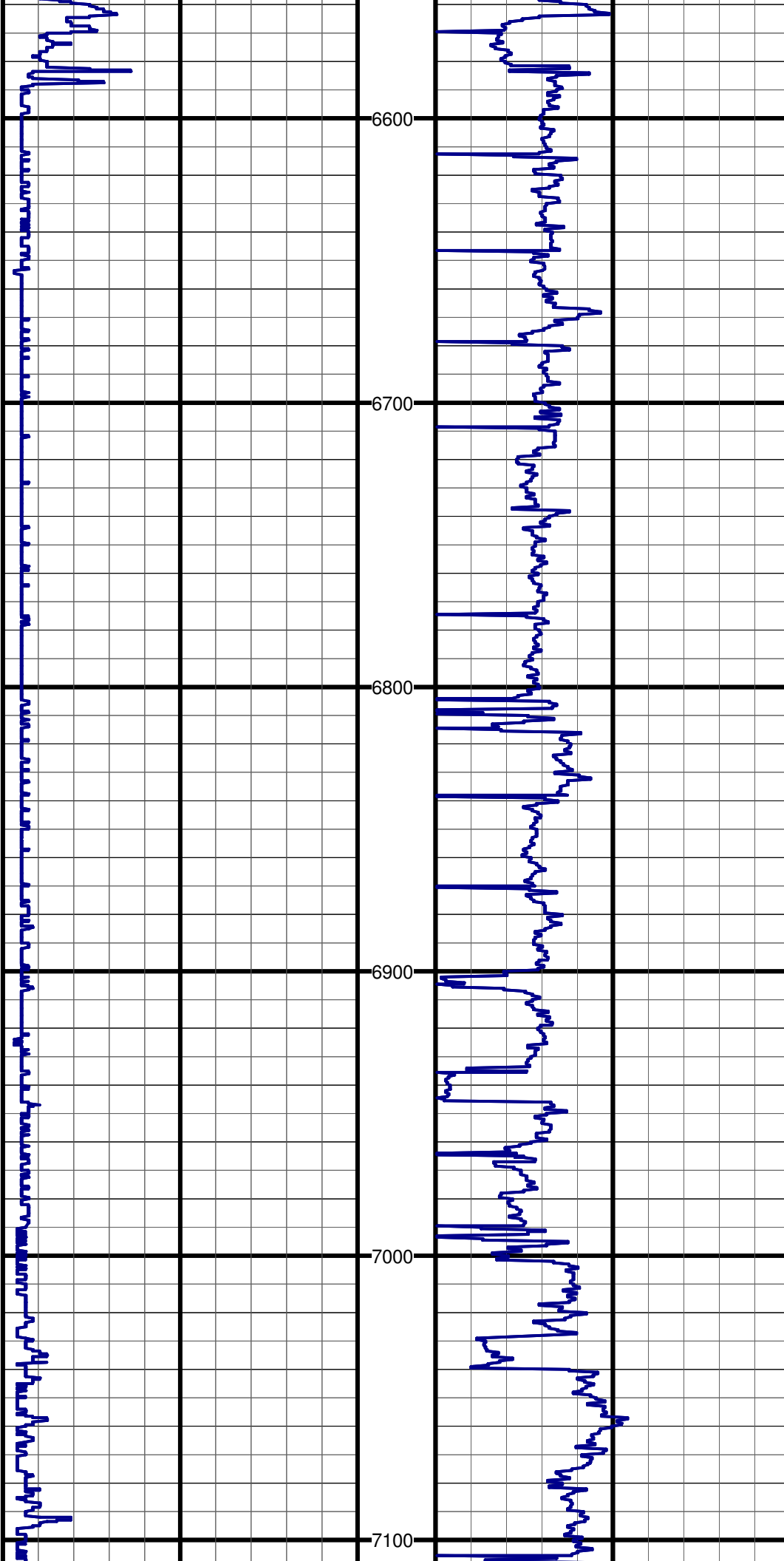
#80 MD:6370.0 TVD:4767.8 I:87.5 A:0.4 VS:1817.9

6400

#81 MD:6465.0 TVD:4771.1 I:88.6 A:0.6 VS:1912.8

6500

#82 MD:6560.0 TVD:4773.6 I:88.7 A:0.4 VS:2008.7



#82 MD:6561.0 TVD:4773.3 I:88.7 A:0.1 VS:2008.7

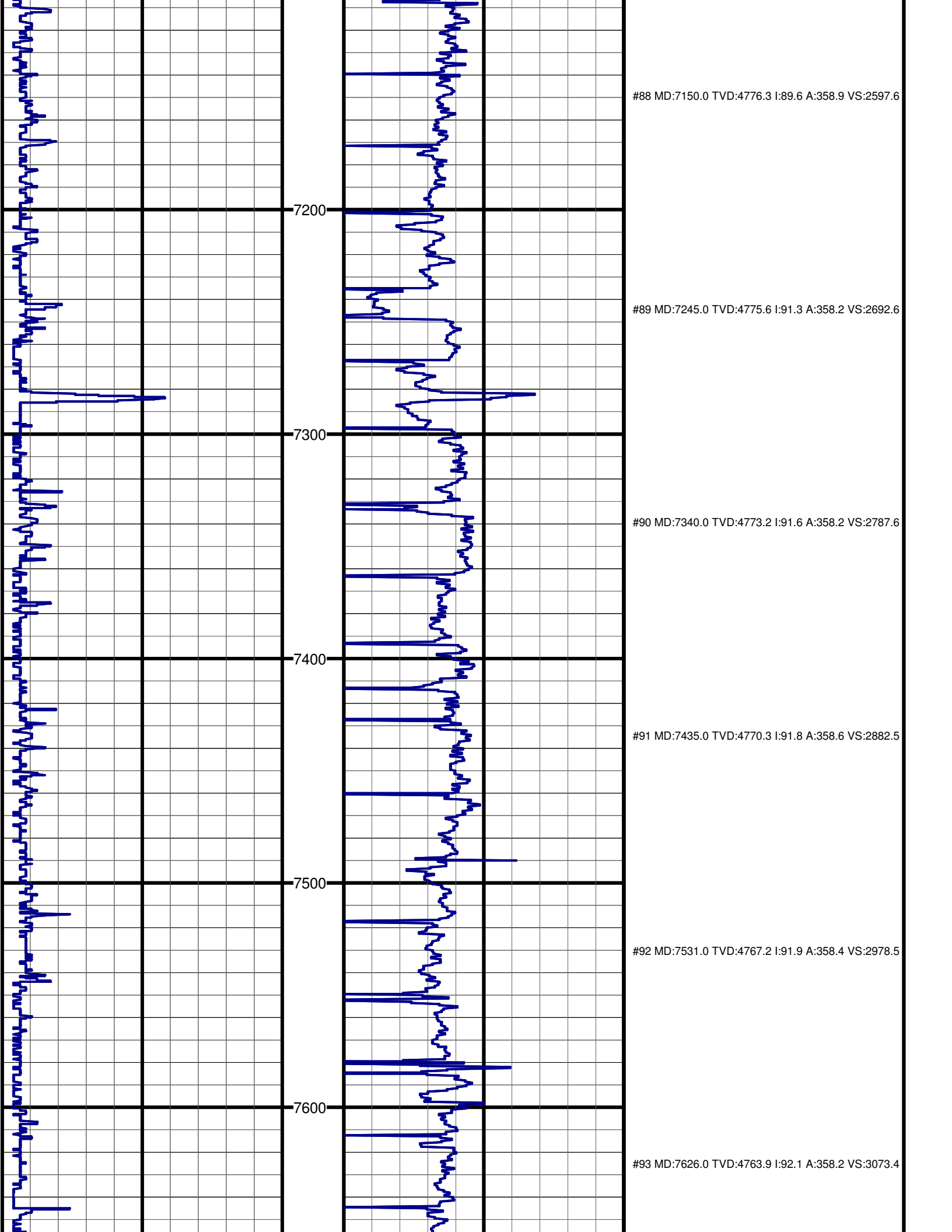
#83 MD:6656.0 TVD:4775.1 I:89.2 A:0.3 VS:2103.7

#84 MD:6751.0 TVD:4775.8 I:89.9 A:0.1 VS:2198.6

#85 MD:6847.0 TVD:4775.6 I:90.4 A:359.9 VS:2294.6

#86 MD:6942.0 TVD:4775.4 I:89.8 A:359.6 VS:2389.6

#87 MD:7055.0 TVD:4775.8 I:89.8 A:358.8 VS:2502.6



#88 MD:7150.0 TVD:4776.3 I:89.6 A:358.9 VS:2597.6

7200

#89 MD:7245.0 TVD:4775.6 I:91.3 A:358.2 VS:2692.6

7300

#90 MD:7340.0 TVD:4773.2 I:91.6 A:358.2 VS:2787.6

7400

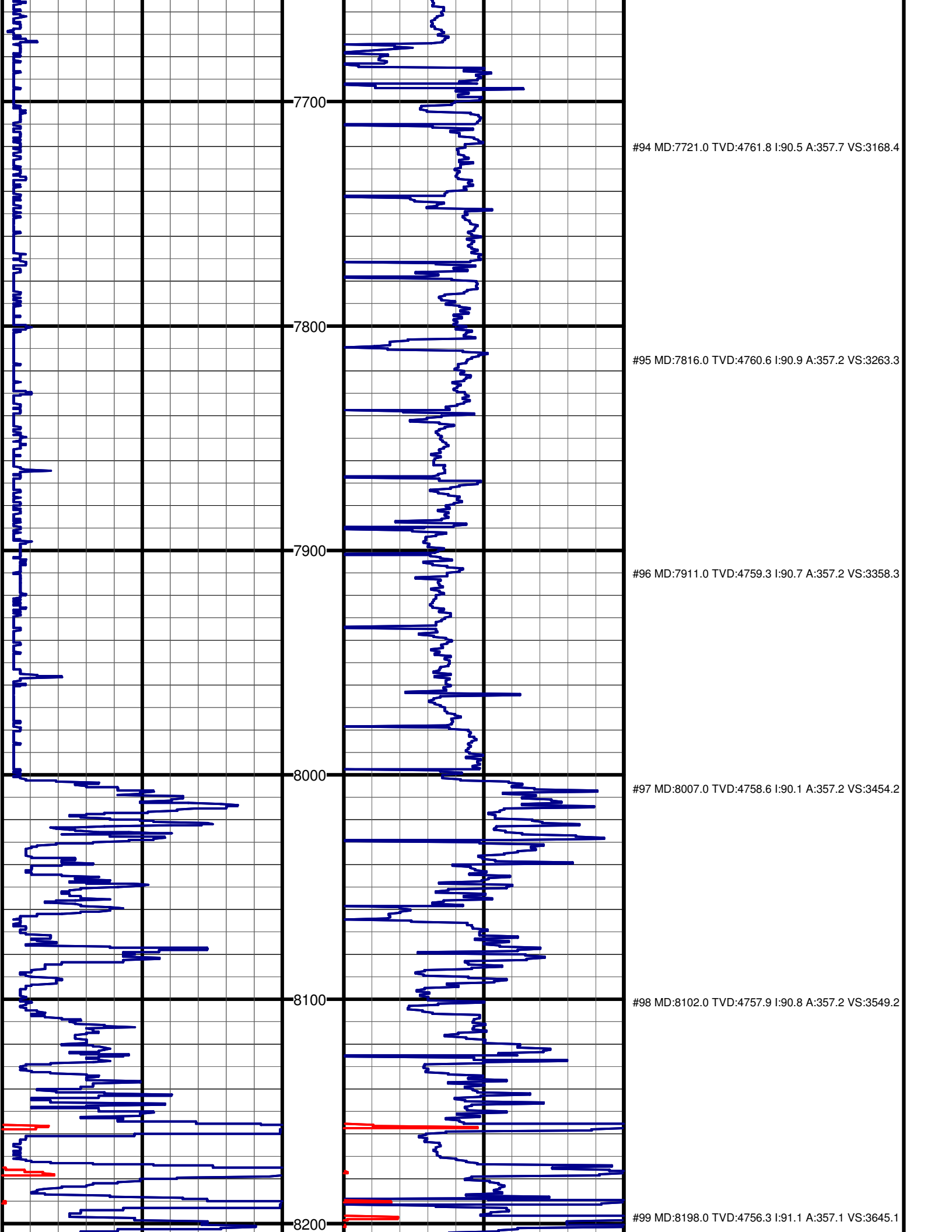
#91 MD:7435.0 TVD:4770.3 I:91.8 A:358.6 VS:2882.5

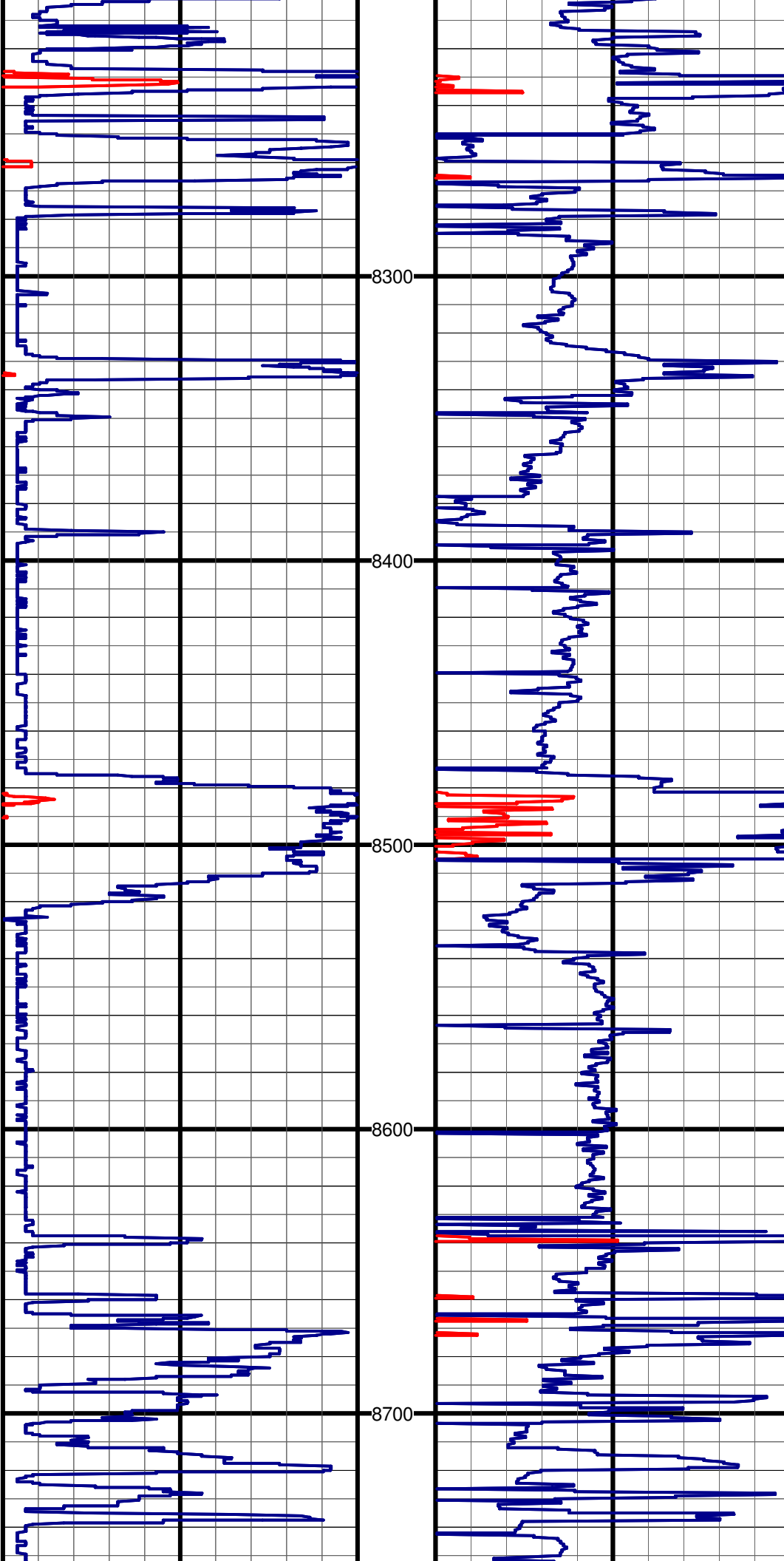
7500

#92 MD:7531.0 TVD:4767.2 I:91.9 A:358.4 VS:2978.5

7600

#93 MD:7626.0 TVD:4763.9 I:92.1 A:358.2 VS:3073.4





#100 MD:8293.0 TVD:4755.8 I:89.5 A:358.3 VS:3740.1

8300

#101 MD:8388.0 TVD:4756.3 I:89.8 A:359.0 VS:3835.1

8400

#102 MD:8484.0 TVD:4756.8 I:89.7 A:358.9 VS:3931.1

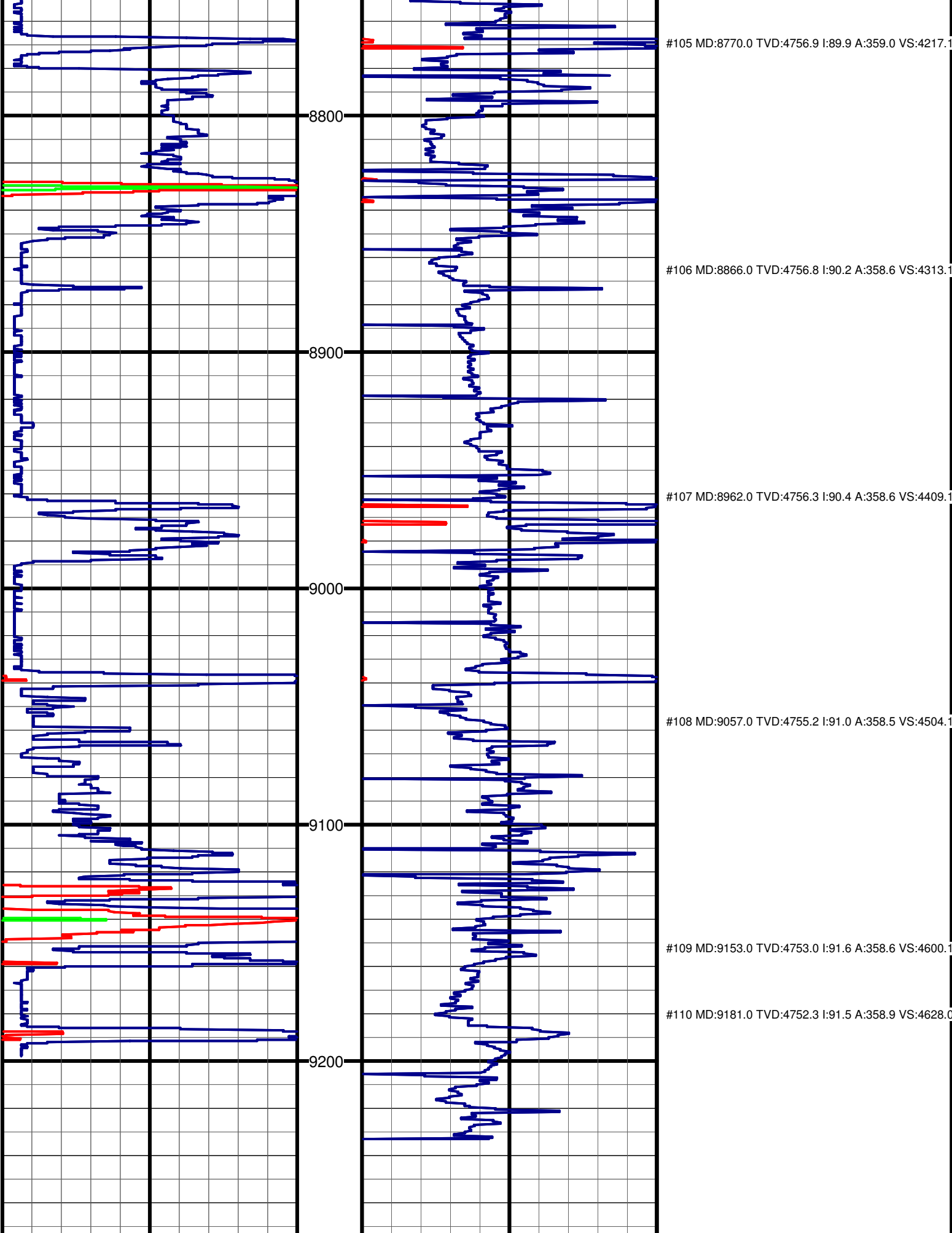
8500

#103 MD:8579.0 TVD:4756.9 I:90.1 A:358.9 VS:4026.1

8600

#104 MD:8675.0 TVD:4756.9 I:90.0 A:358.8 VS:4122.1

8700



#105 MD:8770.0 TVD:4756.9 I:89.9 A:359.0 VS:4217.1

8800

#106 MD:8866.0 TVD:4756.8 I:90.2 A:358.6 VS:4313.1

8900

#107 MD:8962.0 TVD:4756.3 I:90.4 A:358.6 VS:4409.1

9000

#108 MD:9057.0 TVD:4755.2 I:91.0 A:358.5 VS:4504.1

9100

#109 MD:9153.0 TVD:4753.0 I:91.6 A:358.6 VS:4600.1

9200

#110 MD:9181.0 TVD:4752.3 I:91.5 A:358.9 VS:4628.0

Gamma API (MD) Track: 1
API 0 150

Depth 2":100' (100') ROP (MD) Track: 1
Ft/Hr 0 150

150	300
300	450

150	300
300	450

--	--

