

NOMAC SERVICES

GEO

16217 N. May Ave.
Edmond, Oklahoma 73013

24/7 Ops Support 405.562.4149
fax 405.285.0478

APPS.NOMACSERVICES.COM

Customer Information

Operator: **Chesapeake Energy Corp.**
6100 N. Western Avenue
Oklahoma City, OK 73118

Geologist: **Hayet Serradji**
Chesapeake Energy Corp.

Mud Logging Details

Logger: **Ashley Byerley**
April Stephens

Log Interval: 4,810' to 9,233'

Start Date: May 17, 2012

Release Date: May 29, 2012

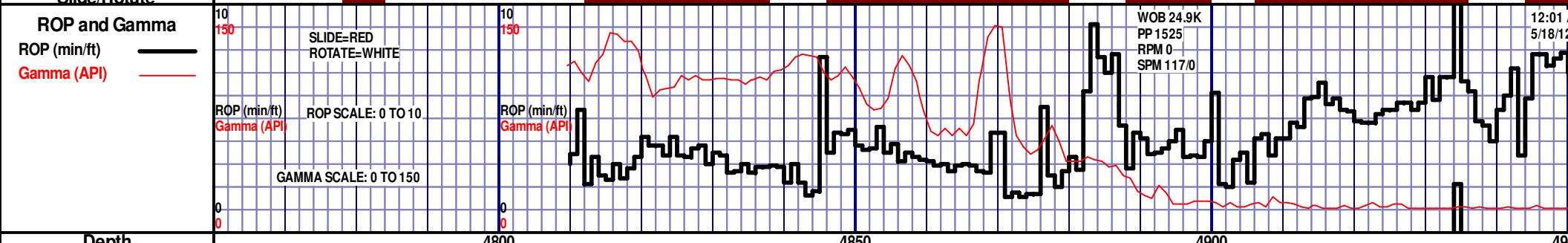
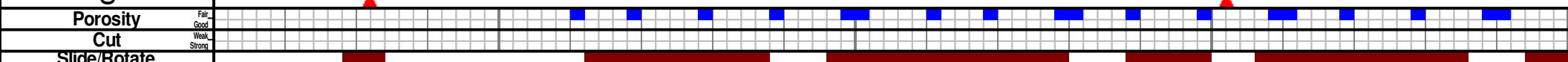
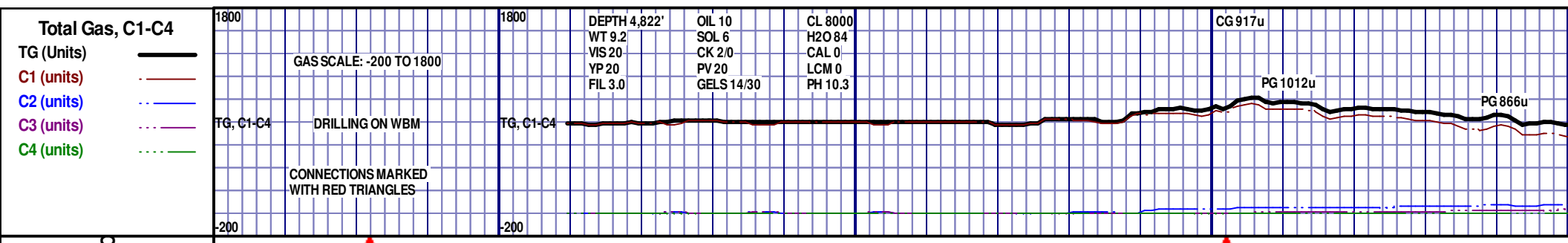
Well Information

Well Name: **Danielson 25-34-8 1H**
Horizontal

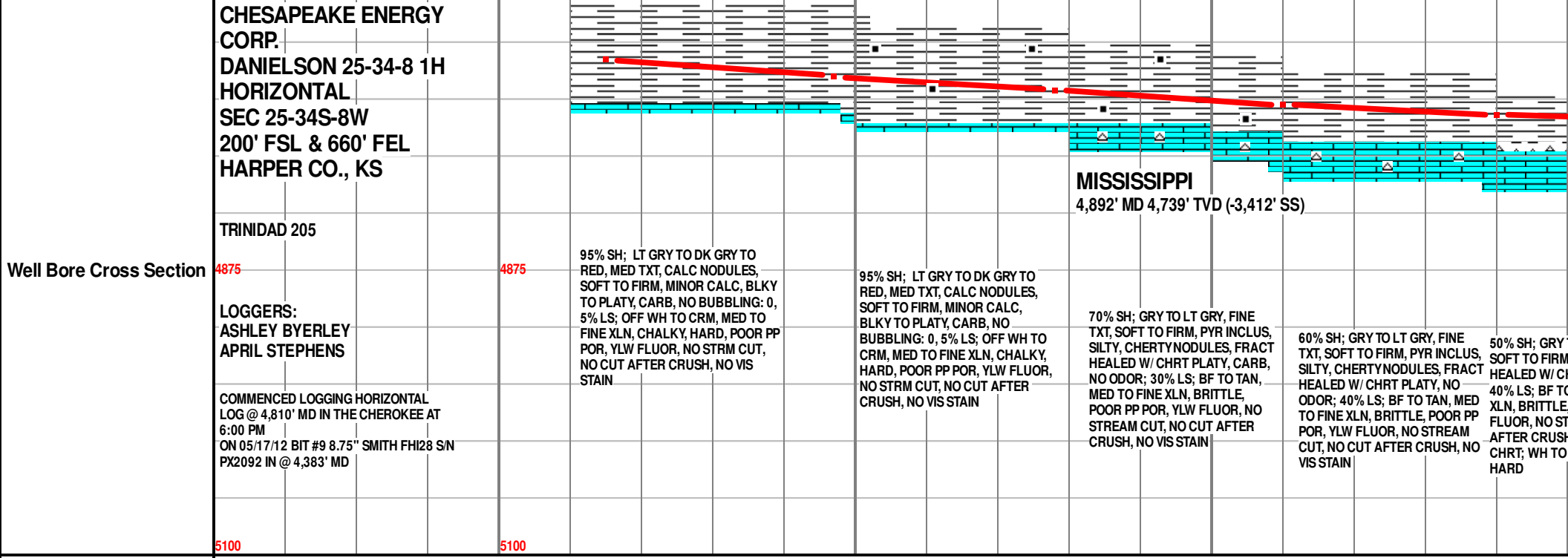
Location: **25-34S-8W**
200' FSL & 660' FEL

County: **Harper**
State: **Kansas**

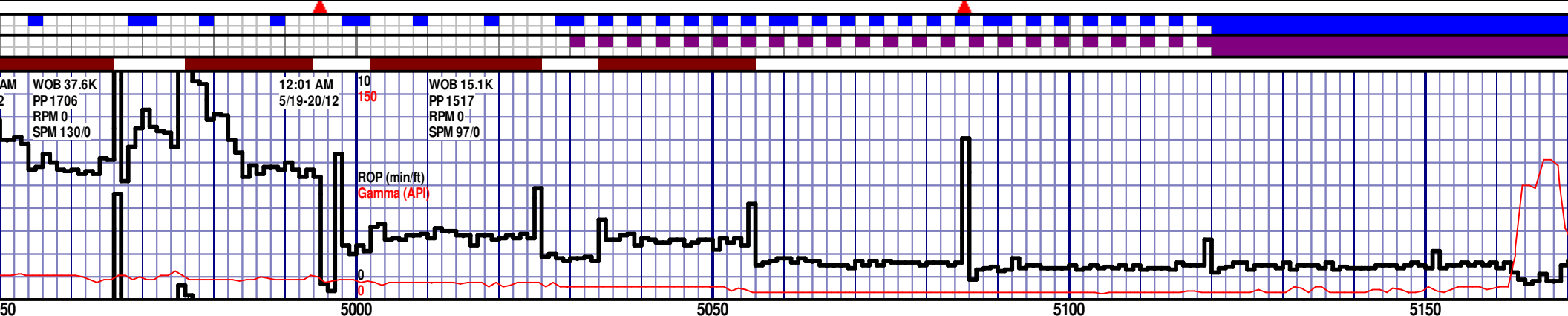
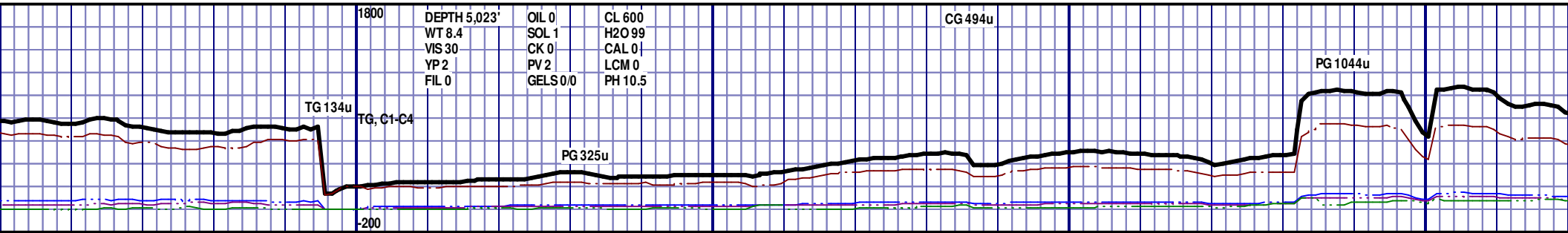
Drilling Rig: **Trinidad 205**
Total Depth: **9,233'**
TD Date: **May 27, 2012**
Formation: **Mississippi Lime**
KB Elevation: **1,327'**
GR Elevation: **1,312'**
API Number: **15-077-21749**



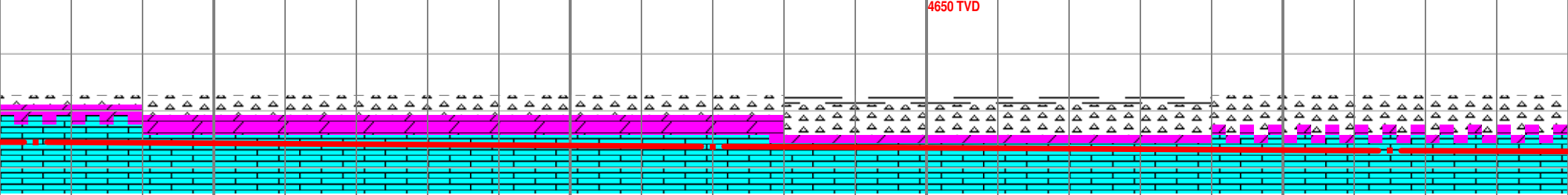
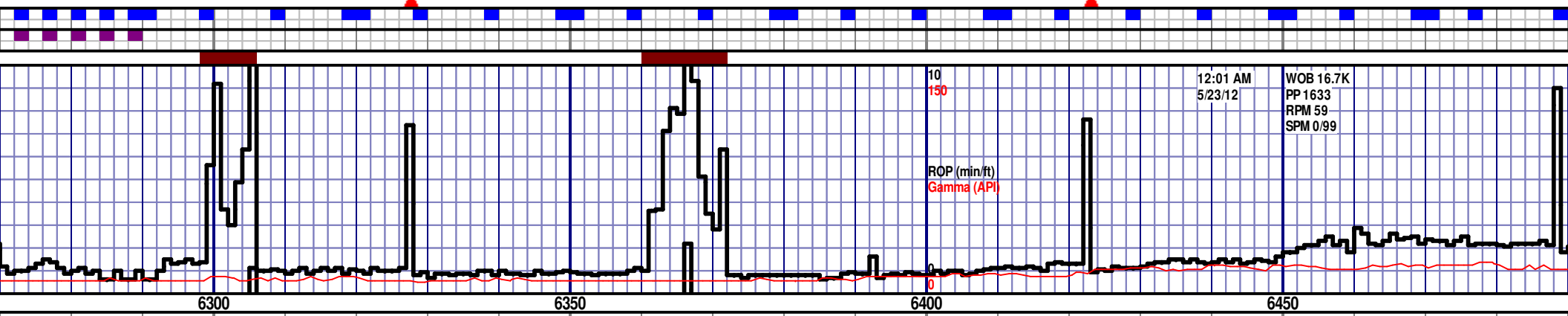
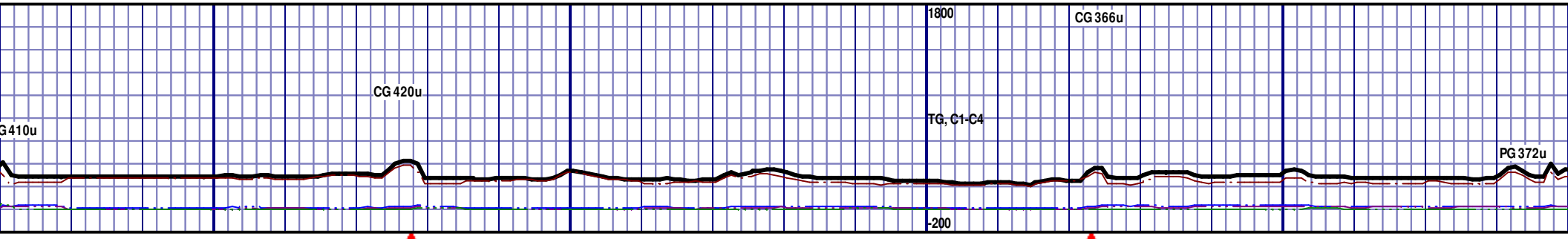
Depth 4800 4850 4900 4950



Survey Data	MD 4815 TVD 4708.47 Az 2° Inc 63.1° VS 274.87	MD 4847 TVD 4722.15 Az 1° Inc 66.3° VS 303.77	MD 4878 TVD 4733.76 Az 359.2° Inc 69.7° VS 332.50	MD 4910 TVD 4744.02 Az 357.1° Inc 72.9° VS 362.80	MD 4940 TVD 4755.8 Az 355.8° Inc 75.1° VS 393.10
-------------	--	--	--	--	---



<p>TOOH @ 4:15 AM ON 5/18/12 @ 4,995' MD TO RUN INTERMEDIATE CASING TIH @ 7:00 AM ON 5/20/12 RESUMED DRILLING @ 11:00 AM ON 5/20/12 W/ BIT #10 6 1/8" TYPE MS1613 S/N JE5199 IN @ 4,995' MD</p>								
TO LT GRY, FINE TXT, SILTY, FRACT CHRT PLATY, NO ODOR; 0 TAN, MED TO FINE POOR PP POR, YLW STREAM CUT, NO CUT 4, NO VIS STAIN; 10% OFF WH, DENSE,	50% LS; BF TO TAN, MED TO FINE XLN, BRITTLE, POOR PP POR, YLW FLUOR, NO STREAM CUT, NO CUT AFTER CRUSH, NO VIS STAIN, 30% SH; GRY TO LT GRY, FINE TXT, SOFT TO FIRM, SILTY, FRACT HEALED W/ CHRT PLATY, NO ODOR; 20% CHRT; WH TO OFF WH, DENSE, HARD	50% LS; WH TO OFF WH, MED TO FINE XLN, BRITTLE, POOR PP POR, YLW FLUOR, NO STREAM CUT, NO CUT AFTER CRUSH, NO VIS STAIN, 30% SH; GRY TO LT GRY, FINE TXT, SOFT TO FIRM, SILTY, FRACT HEALED W/ CHRT PLATY, NO ODOR; 20% CHRT; WH TO OFF WH, DENSE, HARD	50% LS; WH TO OFF WH, MED TO FINE XLN, BRITTLE, FAIR PPPOR, YLW FLUOR, NO STREAM CUT, MILKY CUT AFTER CRUSH, NO VIS STAIN, 30% DOL; WH TO OFF WH, MED TO FINE XLN, SUCROSIC, SOFT TO BRITTLE, 10% CHRT; WH TO OFF WH, DENSE, HARD, 10% SH; GRY TO LT GRY, FINE TXT, SOFT TO FIRM, SILTY, FRACT HEALED W/ CHRT PLATY, NO ODOR	50% LS; WH TO OFF WH, MED TO FINE XLN, BRITTLE, FAIR PPPOR, YLW FLUOR, NO STREAM CUT, MILKY CUT AFTER CRUSH, NO VIS STAIN, 30% DOL; WH TO OFF WH, MED TO FINE XLN, SUCROSIC, SOFT TO BRITTLE, 10% CHRT; WH TO OFF WH, DENSE, HARD, 10% SH; GRY TO LT GRY, FINE TXT, SOFT TO FIRM, SILTY, FRACT HEALED W/ CHRT PLATY, NO ODOR	50% LS; WH TO OFF WH, MED TO FINE XLN, BRITTLE, FAIR PPPOR, YLW FLUOR, NO STREAM CUT, MILKY CUT AFTER CRUSH, NO VIS STAIN, 30% DOL; WH TO OFF WH, MED TO FINE XLN, SUCROSIC, SOFT TO BRITTLE, 10% CHRT; WH TO OFF WH, DENSE, HARD, 10% SH; GRY TO LT GRY, FINE TXT, SOFT TO FIRM, SILTY, FRACT HEALED W/ CHRT PLATY, NO ODOR	50% LS; WH TO OFF WH, MED TO FINE XLN, BRITTLE, FAIR PPPOR, YLW FLUOR, NO STREAM CUT, MILKY CUT AFTER CRUSH, NO VIS STAIN, 30% DOL; WH TO OFF WH, MED TO FINE XLN, SUCROSIC, SOFT TO BRITTLE, 10% CHRT; WH TO OFF WH, DENSE, HARD, 10% SH; GRY TO LT GRY, FINE TXT, SOFT TO FIRM, SILTY, FRACT HEALED W/ CHRT PLATY, NO ODOR	50% LS; WH TO OFF WH, MED TO FINE XLN, BRITTLE, GOOD PP POR, YLW FLUOR, IMMEDIATE STREAM CUT, NO VIS STAIN, 30% DOL; WH TO OFF WH, MED TO FINE XLN, SUCROSIC, SOFT TO BRITTLE, 20% CHRT; WH TO OFF WH, DENSE, HARD	50% LS; WH TO OFF WH, MED TO FINE XLN, BRITTLE, GOOD PP POR, YLW FLUOR, IMMEDIATE STREAM CUT, NO VIS STAIN, 30% DOL; WH TO OFF WH, MED TO FINE XLN, SUCROSIC, SOFT TO BRITTLE, 20% CHRT; WH TO OFF WH, DENSE, HARD

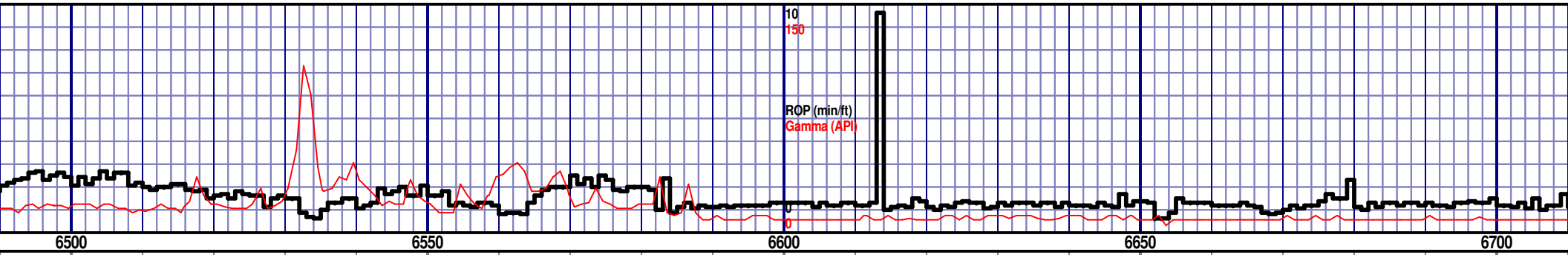
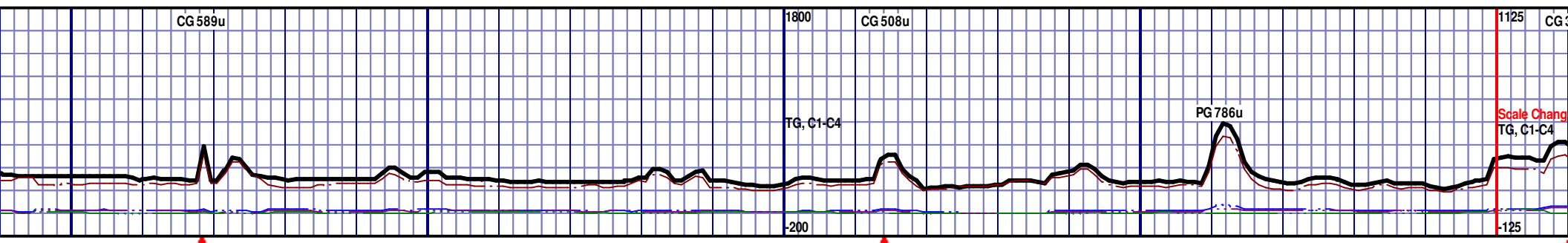


WH TO OFF WH, MED TO BRITTLE, FAIR PPPOR, OR, NO STREAM CUT, CUT AFTER CRUSH, NO VIS % DOL; WH TO OFF WH, FINE XLN, SUCROSIC, BRITTLE, 10% CHRT; WH WH, DENSE, HARD	60% LS; WH TO OFF WH, MED TO FINE XLN, BRITTLE, POOR PP POR, YLW FLUOR, NO STREAM CUT, NO CUT AFTER CRUSH, NO VIS STAIN, 20% DOL; WH TO OFF WH, MED TO FINE XLN, SUCROSIC, SOFT TO BRITTLE, 20% CHRT; WH TO OFF WH, DENSE, HARD	60% LS; WH TO OFF WH, MED TO FINE XLN, BRITTLE, POOR PP POR, YLW FLUOR, NO STREAM CUT, NO CUT AFTER CRUSH, NO VIS STAIN, 20% DOL; WH TO OFF WH, MED TO FINE XLN, SUCROSIC, SOFT TO BRITTLE, 20% CHRT; WH TO OFF WH, DENSE, HARD	60% LS; WH TO OFF WH, MED TO FINE XLN, BRITTLE, POOR PP POR, YLW FLUOR, NO STREAM CUT, NO CUT AFTER CRUSH, NO VIS STAIN, 20% DOL; WH TO OFF WH, MED TO FINE XLN, SUCROSIC, SOFT TO BRITTLE, 20% CHRT; WH TO OFF WH, DENSE, HARD	50% LS; WH TO OFF WH, MED TO FINE XLN, BRITTLE, POOR PP POR, YLW FLUOR, NO STREAM CUT, NO CUT AFTER CRUSH, NO VIS STAIN, 10% DOL; WH TO OFF WH, MED TO FINE XLN, SUCROSIC, SOFT TO BRITTLE, 30% CHRT; WH TO OFF WH, DENSE, HARD, 10% SH; DK GRY TO BLK, SILTY TXT, SOFT TO FIRM	50% LS; WH TO OFF WH, MED TO FINE XLN, BRITTLE, POOR PP POR, YLW FLUOR, NO STREAM CUT, NO CUT AFTER CRUSH, NO VIS STAIN, 10% DOL; WH TO OFF WH, MED TO FINE XLN, SUCROSIC, SOFT TO BRITTLE, 30% CHRT; WH TO OFF WH, DENSE, HARD, 10% SH; DK GRY TO BLK, SILTY TXT, SOFT TO FIRM	55% LS; WH TO OFF WH, MED TO FINE XLN, BRITTLE, POOR PP POR, YLW FLUOR, NO STREAM CUT, NO CUT AFTER CRUSH, NO VIS STAIN, 10% DOL; WH TO OFF WH, MED TO FINE XLN, SUCROSIC, SOFT TO BRITTLE, 35% CHRT; WH TO OFF WH, DENSE, HARD	55% LS; WH TO OFF WH, MED TO FINE XLN, BRITTLE, POOR PP POR, YLW FLUOR, NO STREAM CUT, NO CUT AFTER CRUSH, NO VIS STAIN, 10% DOL; WH TO OFF WH, MED TO FINE XLN, SUCROSIC, SOFT TO BRITTLE, 35% CHRT; WH TO OFF WH, DENSE, HARD
---	---	---	---	---	---	---	---

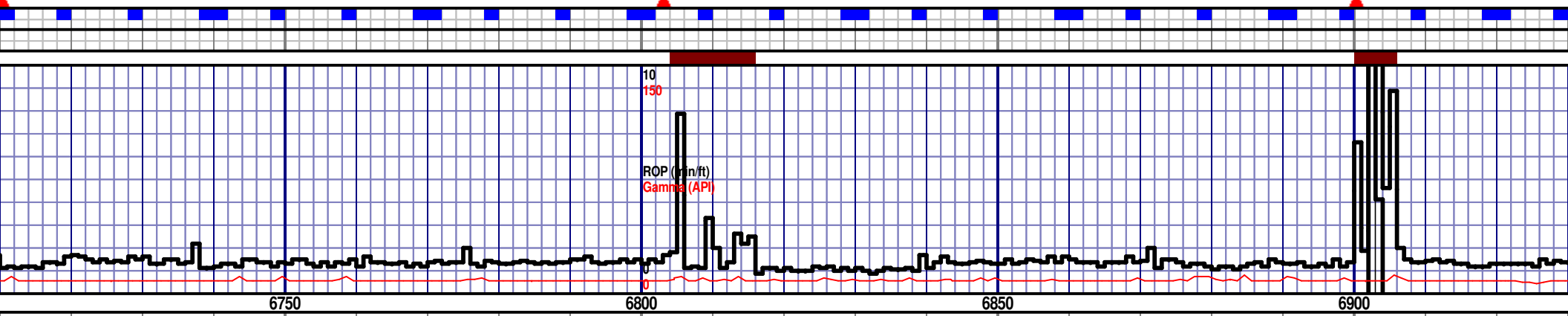
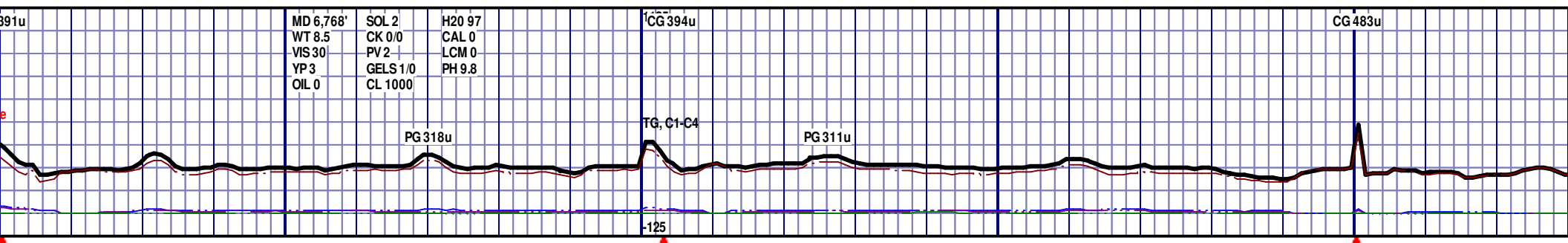
MD 6275 TVD 4765.19
Az 0.1° Inc 89.3° VS 1722.93

MD 6370 TVD 4767.84
Az 0.4° Inc 87.5° VS 1817.86

MD 6465 TVD 4771.08
Az 0.6° Inc 88.6° VS 1912.77



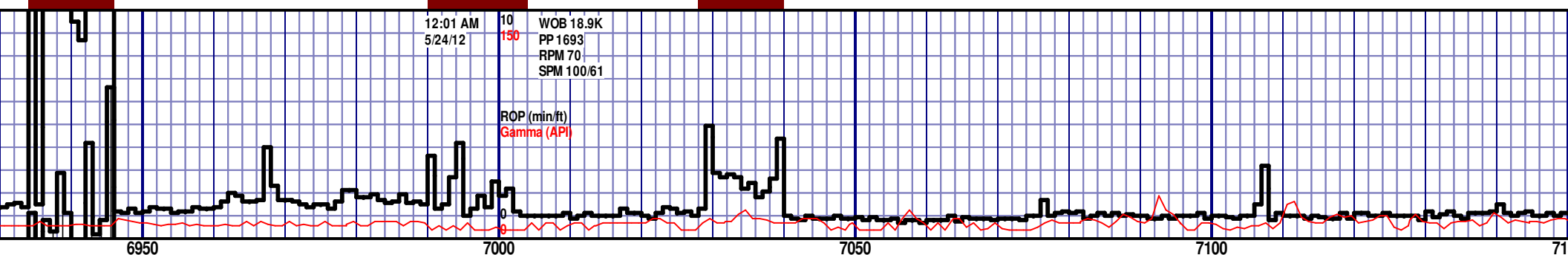
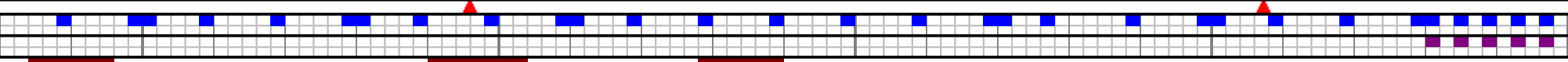
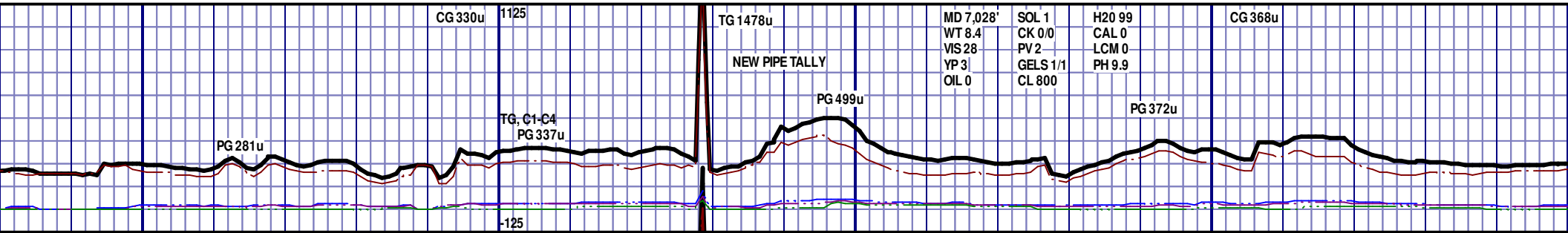
4650 TVD							
4875							
5100							
WH, MED E, POOR NO CUT AFTER N, 10% H, MED TO C, SOFT TO ; WH TO RD	65% LS; WH TO OFF WH, MED TO FINE XLN, BRITTLE, POOR PP POR, YLW FLUOR, NO STREAM CUT, NO CUT AFTER CRUSH, NO VIS STAIN, 10% DOL; WH TO OFF WH, MED TO FINE XLN, SUCROSIC, SOFT TO BRITTLE, 25% CHRT; WH TO OFF WH, DENSE, HARD	65% LS; WH TO OFF WH, MED TO FINE XLN, BRITTLE, POOR PP POR, YLW FLUOR, NO STREAM CUT, NO CUT AFTER CRUSH, NO VIS STAIN, 10% DOL; WH TO OFF WH, MED TO FINE XLN, SUCROSIC, SOFT TO BRITTLE, 25% CHRT; WH TO OFF WH, DENSE, HARD	65% LS; WH TO OFF WH, MED TO FINE XLN, BRITTLE, POOR PP POR, YLW FLUOR, NO STREAM CUT, NO CUT AFTER CRUSH, NO VIS STAIN, 10% DOL; WH TO OFF WH, MED TO FINE XLN, SUCROSIC, SOFT TO BRITTLE, 25% CHRT; WH TO OFF WH, DENSE, HARD	60% LS; WH TO OFF WH, MED TO FINE XLN, BRITTLE, POOR PP POR, YLW FLUOR, NO STREAM CUT, NO CUT AFTER CRUSH, NO VIS STAIN, 10% DOL; WH TO OFF WH, MED TO FINE XLN, SUCROSIC, SOFT TO BRITTLE, 30% CHRT; WH TO OFF WH, DENSE, HARD	60% LS; WH TO OFF WH, MED TO FINE XLN, BRITTLE, POOR PP POR, YLW FLUOR, NO STREAM CUT, NO CUT AFTER CRUSH, NO VIS STAIN, 10% DOL; WH TO OFF WH, MED TO FINE XLN, SUCROSIC, SOFT TO BRITTLE, 30% CHRT; WH TO OFF WH, DENSE, HARD	60% LS; WH TO OFF WH, MED TO FINE XLN, BRITTLE, POOR PP POR, YLW FLUOR, NO STREAM CUT, NO CUT AFTER CRUSH, NO VIS STAIN, 10% DOL; WH TO OFF WH, MED TO FINE XLN, SUCROSIC, SOFT TO BRITTLE, 30% CHRT; WH TO OFF WH, DENSE, HARD	70% LS; WH TO OFF WH, MED TO FINE XLN, BRITTLE, POOR PP POR, YLW FLUOR, NO STREAM CUT, NO CUT AFTER CRUSH, NO VIS STAIN, 10% DOL; WH TO OFF WH, MED TO FINE XLN, SUCROSIC, SOFT TO BRITTLE, 20% CHRT; WH TO OFF WH, DENSE, HARD



4650 TVD							
4875							
70% LS; WH TO OFF WH, MED TO FINE XLN, BRITTLE, POOR PP POR, YLW FLUOR, NO STREAM CUT, NO CUT AFTER CRUSH, NO VIS STAIN, 10% DOL; WH TO OFF WH, MED TO FINE XLN, SUCROSIC, SOFT TO BRITTLE, 20% CHRT; WH TO OFF WH, DENSE, HARD	70% LS; WH TO OFF WH, MED TO FINE XLN, BRITTLE, POOR PP POR, YLW FLUOR, NO STREAM CUT, NO CUT AFTER CRUSH, NO VIS STAIN, 10% DOL; WH TO OFF WH, MED TO FINE XLN, SUCROSIC, SOFT TO BRITTLE, 20% CHRT; WH TO OFF WH, DENSE, HARD	70% LS; WH TO OFF WH, MED TO FINE XLN, BRITTLE, POOR PP POR, YLW FLUOR, NO STREAM CUT, NO CUT AFTER CRUSH, NO VIS STAIN, 10% DOL; WH TO OFF WH, MED TO FINE XLN, SUCROSIC, SOFT TO BRITTLE, 20% CHRT; WH TO OFF WH, DENSE, HARD	70% LS; WH TO OFF WH, MED TO FINE XLN, BRITTLE, POOR PP POR, YLW FLUOR, NO STREAM CUT, NO CUT AFTER CRUSH, NO VIS STAIN, 15% DOL; WH TO OFF WH, MED TO FINE XLN, SUCROSIC, SOFT TO BRITTLE, 15% CHRT; WH TO OFF WH, DENSE, HARD	70% LS; WH TO OFF WH, MED TO FINE XLN, BRITTLE, POOR PP POR, YLW FLUOR, NO STREAM CUT, NO CUT AFTER CRUSH, NO VIS STAIN, 15% DOL; WH TO OFF WH, MED TO FINE XLN, SUCROSIC, SOFT TO BRITTLE, 15% CHRT; WH TO OFF WH, DENSE, HARD	70% LS; WH TO OFF WH, MED TO FINE XLN, BRITTLE, POOR PP POR, YLW FLUOR, NO STREAM CUT, NO CUT AFTER CRUSH, NO VIS STAIN, 15% DOL; WH TO OFF WH, MED TO FINE XLN, SUCROSIC, SOFT TO BRITTLE, 15% CHRT; WH TO OFF WH, DENSE, HARD	70% LS; WH TO OFF WH, MED TO FINE XLN, BRITTLE, POOR PP POR, YLW FLUOR, NO STREAM CUT, NO CUT AFTER CRUSH, NO VIS STAIN, 10% DOL; WH TO OFF WH, MED TO FINE XLN, SUCROSIC, SOFT TO BRITTLE, 20% CHRT; WH TO OFF WH, DENSE, HARD	70% LS; WH TO OFF WH, MED TO FINE XLN, BRITTLE, POOR PP POR, YLW FLUOR, NO STREAM CUT, NO CUT AFTER CRUSH, NO VIS STAIN, 10% DOL; WH TO OFF WH, MED TO FINE XLN, SUCROSIC, SOFT TO BRITTLE, 20% CHRT; WH TO OFF WH, DENSE, HARD
5100							

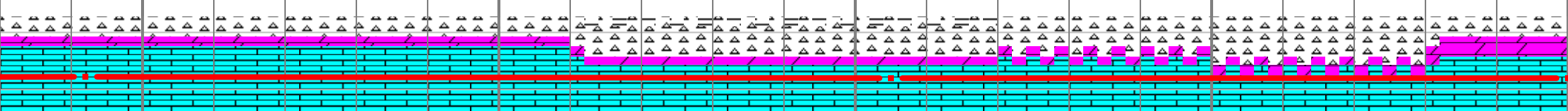
MD 6751 TVD 4775.82
Az 0.1° Inc 89.9° VS 2198.65

MD 6847 TVD 4775.57
Az 359.9° Inc 90.4° VS 2294.63



6950 7000 7050 7100 7150

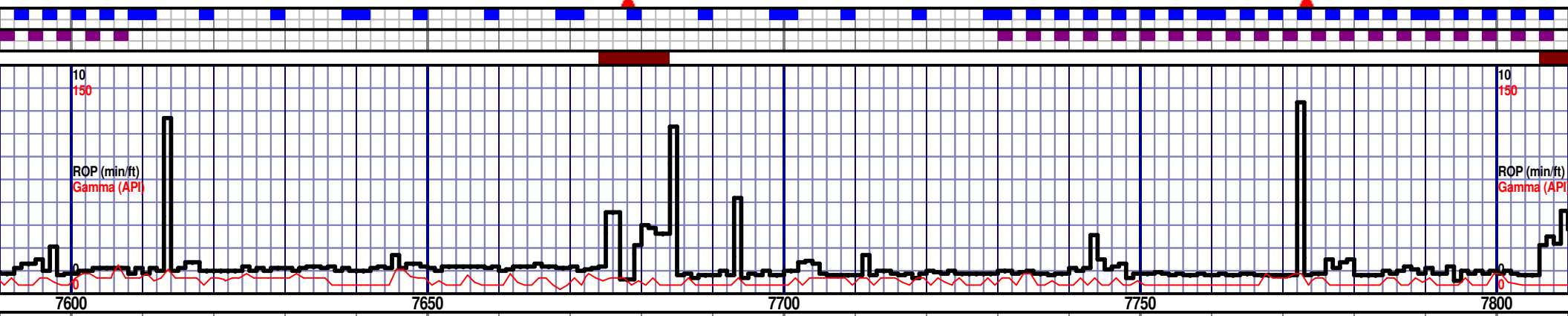
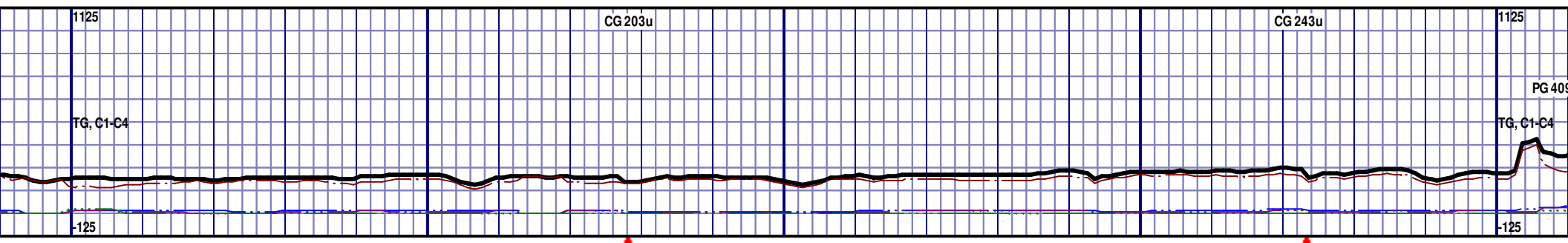
4650 TVD TOOH @ 1:00 AM ON 5/24/12 @ 7,028' RESUMED DRILLING @ 11:00 AM ON 5/24/12 W/ MD TO CHANGE THE BHA BIT #12 6 1/8' TYPE MSI613 S/N JF3472 IN @ 7,028' MD TIH @ 7:00 AM ON 5/24/12



4875

5100

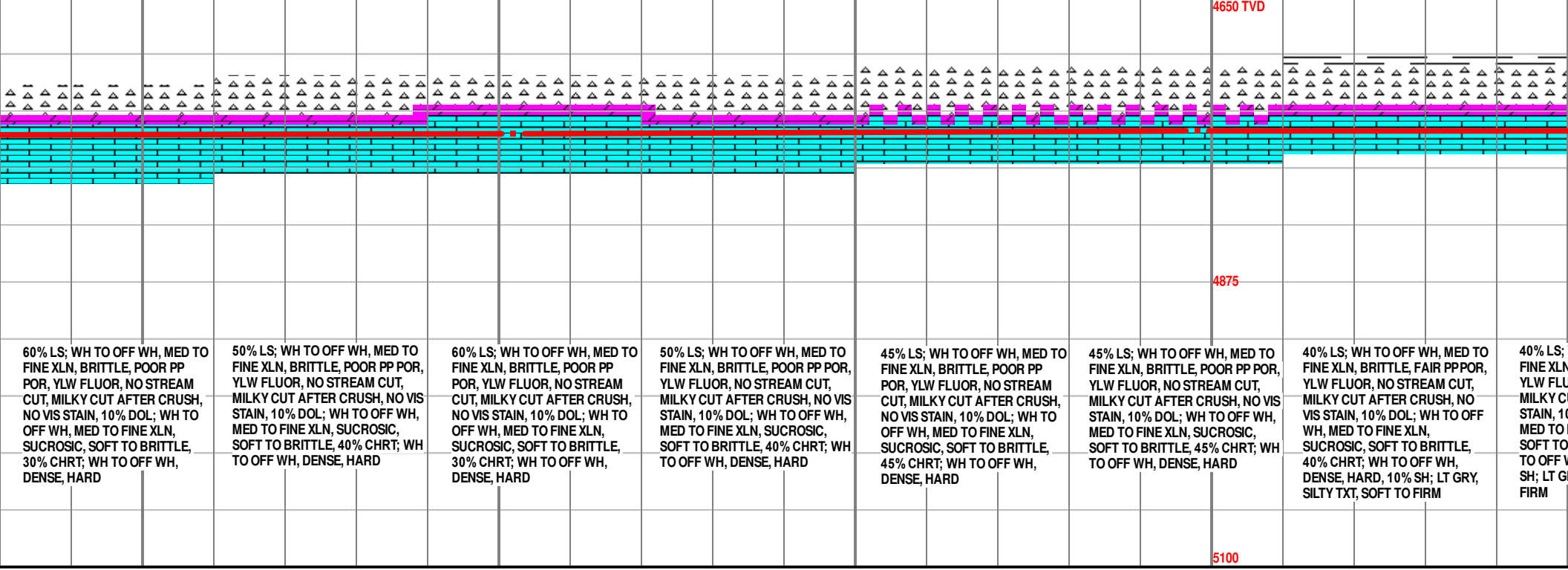
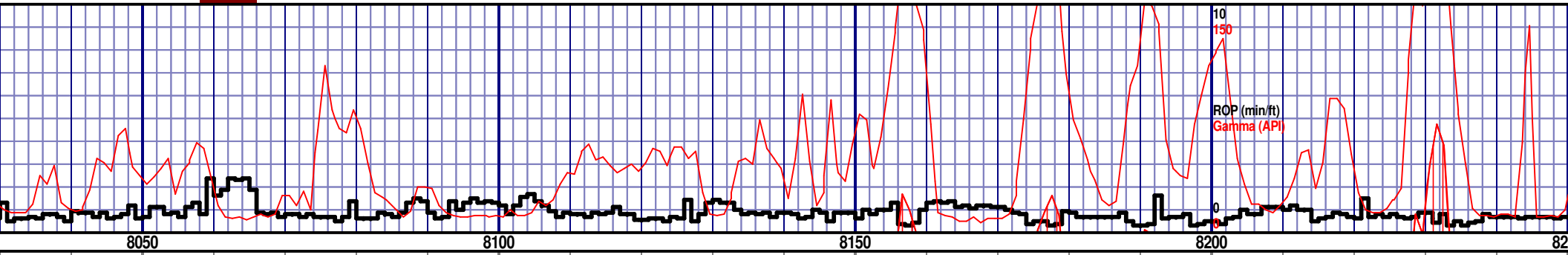
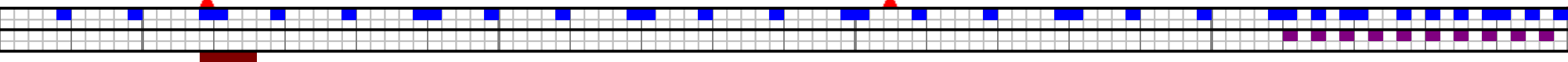
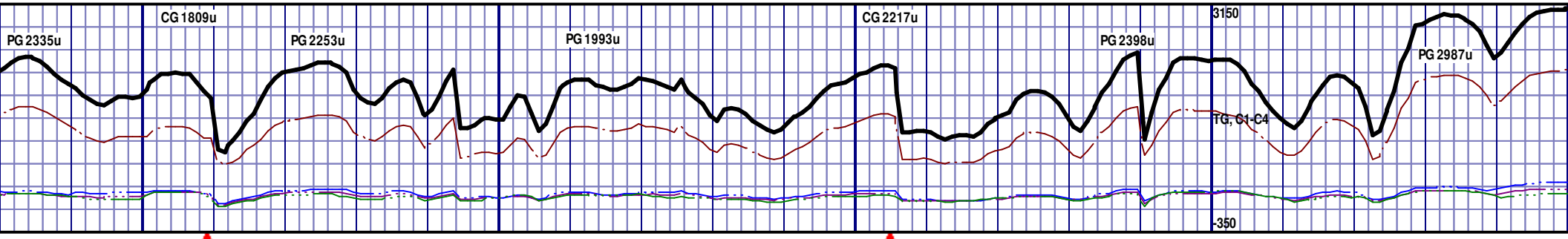
WH TO OFF WH, MED TO BRITTLE, POOR PP POR, YLW FLUOR, NO STREAM CUT AFTER CRUSH, NO VIS STAIN, 10% DOL; WH TO OFF WH, MED TO FINE XLN, SUCROSIC, SOFT TO BRITTLE, 20% CHRT; WH TO OFF WH, DENSE, HARD	70% LS; WH TO OFF WH, MED TO FINE XLN, BRITTLE, POOR PP POR, YLW FLUOR, NO STREAM CUT, NO CUT AFTER CRUSH, NO VIS STAIN, 10% DOL; WH TO OFF WH, MED TO FINE XLN, SUCROSIC, SOFT TO BRITTLE, 20% CHRT; WH TO OFF WH, DENSE, HARD	70% LS; WH TO OFF WH, MED TO FINE XLN, BRITTLE, POOR PP POR, YLW FLUOR, NO STREAM CUT, NO CUT AFTER CRUSH, NO VIS STAIN, 10% DOL; WH TO OFF WH, MED TO FINE XLN, SUCROSIC, SOFT TO BRITTLE, 20% CHRT; WH TO OFF WH, DENSE, HARD	50% LS; WH TO OFF WH, MED TO FINE XLN, BRITTLE, POOR PP POR, YLW FLUOR, NO STREAM CUT, NO MILKY CUT AFTER CRUSH, NO VIS STAIN, 10% DOL; WH TO OFF WH, MED TO FINE XLN, SUCROSIC, SOFT TO BRITTLE, 40% CHRT; WH TO OFF WH, DENSE, HARD, 5% SH; DK GRAY TO LT GRAY, SILTY TXT, SOFT TO FIRM	50% LS; WH TO OFF WH, MED TO FINE XLN, BRITTLE, POOR PP POR, YLW FLUOR, NO STREAM CUT, NO CUT AFTER CRUSH, NO VIS STAIN, 10% DOL; WH TO OFF WH, MED TO FINE XLN, SUCROSIC, SOFT TO BRITTLE, 40% CHRT; WH TO OFF WH, DENSE, HARD, 5% SH; DK GRAY TO LT GRAY, SILTY TXT, SOFT TO FIRM	55% LS; WH TO OFF WH, MED TO FINE XLN, BRITTLE, POOR PP POR, YLW FLUOR, NO STREAM CUT, NO CUT AFTER CRUSH, NO VIS STAIN, 10% DOL; WH TO OFF WH, MED TO FINE XLN, SUCROSIC, SOFT TO BRITTLE, 35% CHRT; WH TO OFF WH, DENSE, HARD	45% LS; WH TO OFF WH, MED TO FINE XLN, BRITTLE, POOR PP POR, YLW FLUOR, NO STREAM CUT, NO CUT AFTER CRUSH, NO VIS STAIN, 10% DOL; WH TO OFF WH, MED TO FINE XLN, SUCROSIC, SOFT TO BRITTLE, 45% CHRT; WH TO OFF WH, DENSE, HARD	60% LS; WH TO OFF WH, MED TO FINE XLN, BRITTLE, POOR PP POR, YLW FLUOR, NO STREAM CUT, NO CUT AFTER CRUSH, NO VIS STAIN, 20% DOL; WH TO OFF WH, MED TO FINE XLN, SUCROSIC, SOFT TO BRITTLE, 20% CHRT; WH TO OFF WH, DENSE, HARD
---	---	---	---	---	---	---	---



4650 TVD								4650 TVD
WH TO OFF WH, MED TO BRITTLE, FAIR PPPOR, OR, NO STREAM CUT, IT AFTER CRUSH, NO VIS % DOL; WH TO OFF WH, FINE XLN, SUCROSIC, BRITTLE, 10% CHRT; WH H, DENSE, HARD	70% LS; WH TO OFF WH, MED TO FINE XLN, BRITTLE, POOR PP POR, YLW FLUOR, NO STREAM CUT, MILKY CUT AFTER CRUSH, NO VIS STAIN, 20% DOL; WH TO OFF WH, MED TO FINE XLN, SUCROSIC, SOFT TO BRITTLE, 10% CHRT; WH TO OFF WH, DENSE, HARD	60% LS; WH TO OFF WH, MED TO FINE XLN, BRITTLE, POOR PP POR, YLW FLUOR, NO STREAM CUT, MILKY CUT AFTER CRUSH, NO VIS STAIN, 20% DOL; WH TO OFF WH, MED TO FINE XLN, SUCROSIC, SOFT TO BRITTLE, 20% CHRT; WH TO OFF WH, DENSE, HARD	80% LS; WH TO OFF WH, MED TO FINE XLN, BRITTLE, POOR PP POR, YLW FLUOR, NO STREAM CUT, MILKY CUT AFTER CRUSH, NO VIS STAIN, 10% DOL; WH TO OFF WH, MED TO FINE XLN, SUCROSIC, SOFT TO BRITTLE, 10% CHRT; WH TO OFF WH, DENSE, HARD	70% LS; WH TO OFF WH, MED TO FINE XLN, BRITTLE, POOR PP POR, YLW FLUOR, NO STREAM CUT, MILKY CUT AFTER CRUSH, NO VIS STAIN, 20% DOL; WH TO OFF WH, MED TO FINE XLN, SUCROSIC, SOFT TO BRITTLE, 10% CHRT; WH TO OFF WH, DENSE, HARD	80% LS; WH TO OFF WH, MED TO FINE XLN, BRITTLE, FAIR PPPOR, YLW FLUOR, NO STREAM CUT, MILKY CUT AFTER CRUSH, NO VIS STAIN, 10% DOL; WH TO OFF WH, MED TO FINE XLN, SUCROSIC, SOFT TO BRITTLE, 10% CHRT; WH TO OFF WH, DENSE, HARD	80% LS; WH TO OFF WH, MED TO FINE XLN, BRITTLE, FAIR PPPOR, YLW FLUOR, NO STREAM CUT, MILKY CUT AFTER CRUSH, NO VIS STAIN, 20% DOL; WH TO OFF WH, MED TO FINE XLN, SUCROSIC, SOFT TO BRITTLE, 10% CHRT; WH TO OFF WH, DENSE, HARD	80% LS; WH TO OFF WH, MED TO FINE XLN, BRITTLE, FAIR PPPOR, YLW FLUOR, NO STREAM CUT, MILKY CUT AFTER CRUSH, NO VIS STAIN, 20% DOL; WH TO OFF WH, MED TO FINE XLN, SUCROSIC, SOFT TO BRITTLE, 10% CHRT; WH TO OFF WH, DENSE, HARD	4650 TVD
4875								4875
5100								5100

MD 7626 TVD 4763.92
Az 358.2° Inc 92.1° VS 3073.40

MD 7721 TVD 4761.76
Az 357.7° Inc 90.5° VS 3168.36



60% LS; WH TO OFF WH, MED TO FINE XLN, BRITTLE, POOR PP POR, YLW FLUOR, NO STREAM CUT, MILKY CUT AFTER CRUSH, NO VIS STAIN, 10% DOL; WH TO OFF WH, MED TO FINE XLN, SUCROSIC, SOFT TO BRITTLE, 30% CHRT; WH TO OFF WH, DENSE, HARD

50% LS; WH TO OFF WH, MED TO FINE XLN, BRITTLE, POOR PP POR, YLW FLUOR, NO STREAM CUT, MILKY CUT AFTER CRUSH, NO VIS STAIN, 10% DOL; WH TO OFF WH, MED TO FINE XLN, SUCROSIC, SOFT TO BRITTLE, 40% CHRT; WH TO OFF WH, DENSE, HARD

60% LS; WH TO OFF WH, MED TO FINE XLN, BRITTLE, POOR PP POR, YLW FLUOR, NO STREAM CUT, MILKY CUT AFTER CRUSH, NO VIS STAIN, 10% DOL; WH TO OFF WH, MED TO FINE XLN, SUCROSIC, SOFT TO BRITTLE, 30% CHRT; WH TO OFF WH, DENSE, HARD

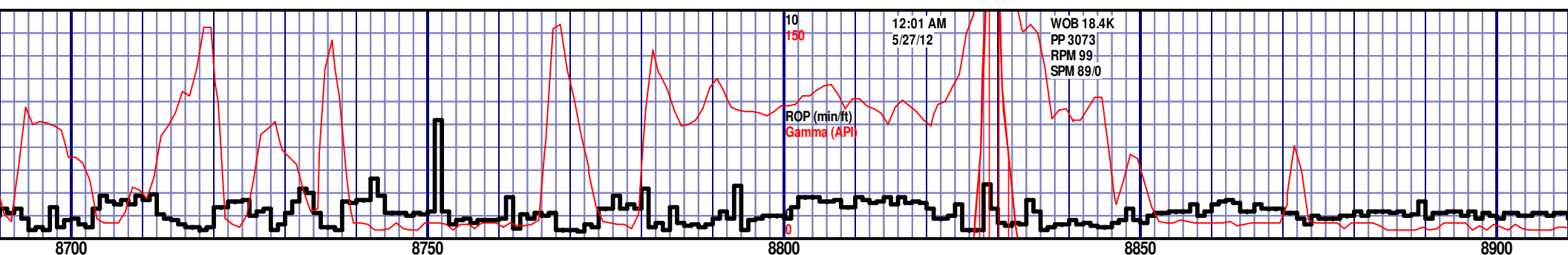
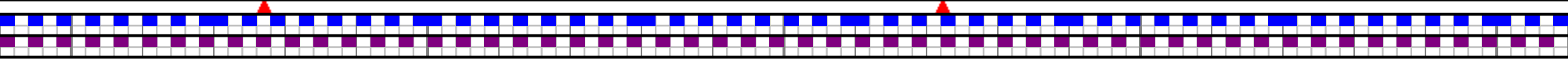
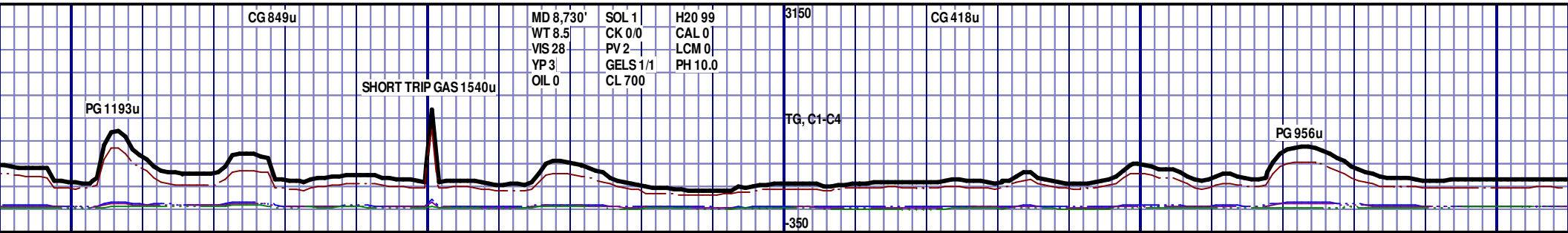
50% LS; WH TO OFF WH, MED TO FINE XLN, BRITTLE, POOR PP POR, YLW FLUOR, NO STREAM CUT, MILKY CUT AFTER CRUSH, NO VIS STAIN, 10% DOL; WH TO OFF WH, MED TO FINE XLN, SUCROSIC, SOFT TO BRITTLE, 40% CHRT; WH TO OFF WH, DENSE, HARD

45% LS; WH TO OFF WH, MED TO FINE XLN, BRITTLE, POOR PP POR, YLW FLUOR, NO STREAM CUT, MILKY CUT AFTER CRUSH, NO VIS STAIN, 10% DOL; WH TO OFF WH, MED TO FINE XLN, SUCROSIC, SOFT TO BRITTLE, 45% CHRT; WH TO OFF WH, DENSE, HARD

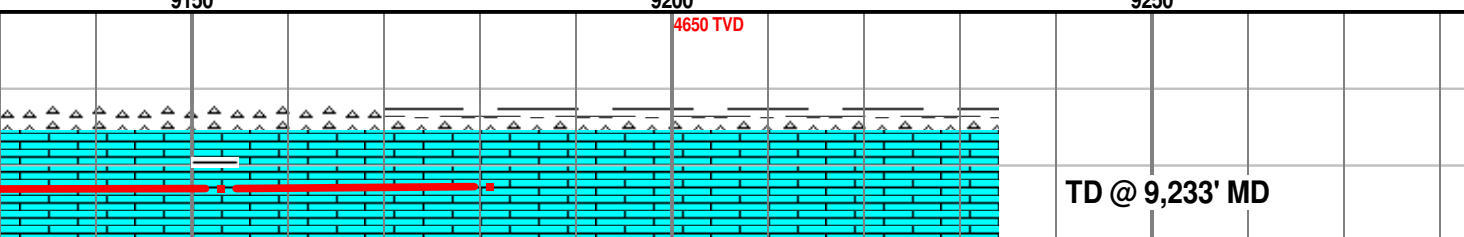
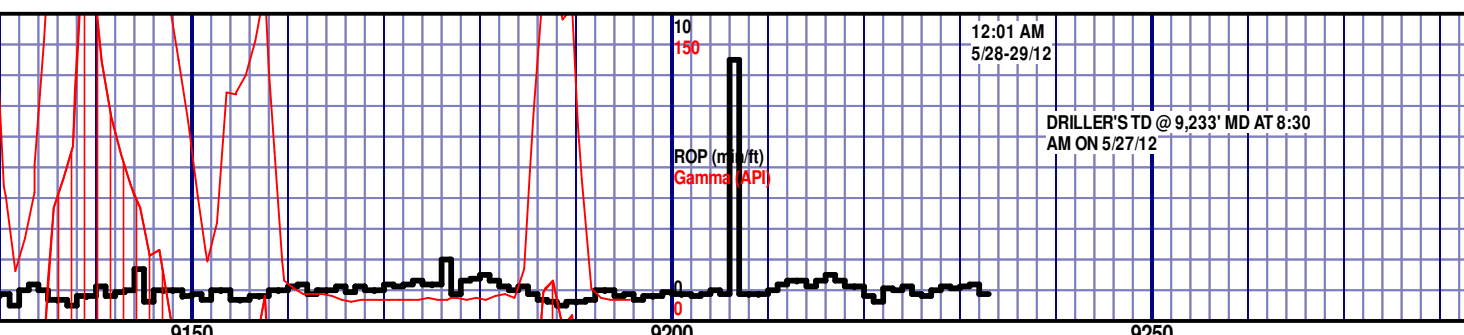
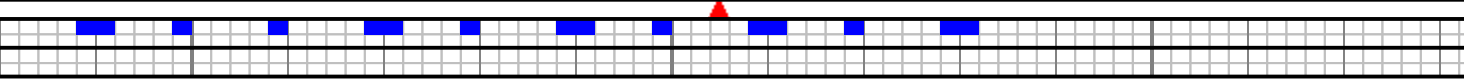
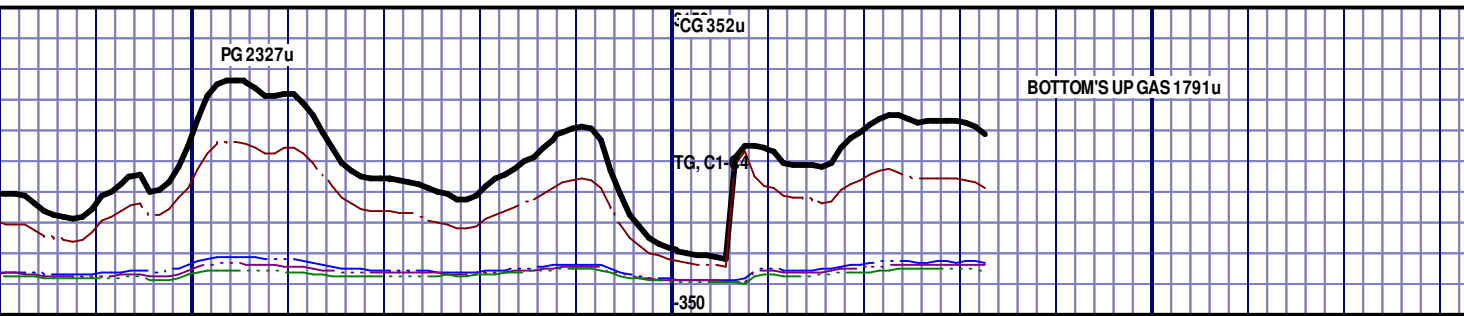
45% LS; WH TO OFF WH, MED TO FINE XLN, BRITTLE, POOR PP POR, YLW FLUOR, NO STREAM CUT, MILKY CUT AFTER CRUSH, NO VIS STAIN, 10% DOL; WH TO OFF WH, MED TO FINE XLN, SUCROSIC, SOFT TO BRITTLE, 45% CHRT; WH TO OFF WH, DENSE, HARD

40% LS; WH TO OFF WH, MED TO FINE XLN, BRITTLE, FAIR PPPOR, YLW FLUOR, NO STREAM CUT, MILKY CUT AFTER CRUSH, NO VIS STAIN, 10% DOL; WH TO OFF WH, MED TO FINE XLN, SUCROSIC, SOFT TO BRITTLE, 40% CHRT; WH TO OFF WH, DENSE, HARD, 10% SH; LT GRY, SILTY TXT, SOFT TO FIRM

40% LS; WH TO OFF WH, MED TO FINE XLN, BRITTLE, FAIR PPPOR, YLW FLUOR, NO STREAM CUT, MILKY CUT AFTER CRUSH, NO VIS STAIN, 10% DOL; WH TO OFF WH, MED TO FINE XLN, SUCROSIC, SOFT TO BRITTLE, 40% CHRT; WH TO OFF WH, DENSE, HARD, 10% SH; LT GRY, SILTY TXT, SOFT TO FIRM



4650 TVD							
4875							
40% LS; WH TO OFF WH, MED TO FINE XLN, BRITTLE, FAIR PPPOR, YLW FLUOR, NO STREAM CUT, MILKY CUT AFTER CRUSH, NO VIS STAIN, 30% CHRT; WH TO OFF WH, DENSE, HARD, 30% SH; TAN TO LT GRAY, SILTY TXT, SOFT TO FIRM	40% LS; WH TO OFF WH, MED TO FINE XLN, BRITTLE, FAIR PPPOR, YLW FLUOR, NO STREAM CUT, MILKY CUT AFTER CRUSH, NO VIS STAIN, 30% CHRT; WH TO OFF WH, DENSE, HARD, 30% SH; TAN TO LT GRAY, SILTY TXT, SOFT TO FIRM	40% CHRT; WH TO OFF WH, DENSE, HARD, 30% LS; WH TO OFF WH, MED TO FINE XLN, BRITTLE, FAIR PPPOR, YLW FLUOR, NO STREAM CUT, MILKY CUT AFTER CRUSH, NO VIS STAIN, 30% SH; LT GRAY, SILTY TXT, SOFT TO FIRM	45% CHRT; WH TO OFF WH, DENSE, HARD, 30% LS; WH TO OFF WH, MED TO FINE XLN, BRITTLE, FAIR PPPOR, YLW FLUOR, NO STREAM CUT, MILKY CUT AFTER CRUSH, NO VIS STAIN, 25% SH; LT GRAY, SILTY TXT, SOFT TO FIRM	40% CHRT; WH TO OFF WH, DENSE, HARD, 30% LS; WH TO OFF WH, MED TO FINE XLN, BRITTLE, FAIR PPPOR, YLW FLUOR, NO STREAM CUT, MILKY CUT AFTER CRUSH, NO VIS STAIN, 30% SH; LT GRAY, SILTY TXT, SOFT TO FIRM	65% LS; WH TO OFF WH, MED TO FINE XLN, BRITTLE, FAIR PPPOR, YLW FLUOR, NO STREAM CUT, MILKY CUT AFTER CRUSH, NO VIS STAIN, 30% CHRT; WH TO OFF WH, DENSE, HARD, 5% SH; TAN TO LT GRAY, SILTY TXT, SOFT TO FIRM	70% LS; WH TO OFF WH, MED TO FINE XLN, BRITTLE, FAIR PPPOR, YLW FLUOR, NO STREAM CUT, MILKY CUT AFTER CRUSH, NO VIS STAIN, 30% CHRT; WH TO OFF WH, DENSE, HARD	70% LS; WH TO OFF WH, MED TO FINE XLN, BRITTLE, FAIR PPPOR, YLW FLUOR, NO STREAM CUT, MILKY CUT AFTER CRUSH, NO VIS STAIN, 30% CHRT; WH TO OFF WH, DENSE, HARD
5100							



TD @ 9,233' MD

RELEASED 5/29/12

<p>...MED TO ...PP POR, ...CUT, ...CRUSH, NO ...WH TO OFF</p>	<p>80% LS; WH TO OFF WH, MED TO FINE XLN, BRITTLE, POOR PP POR, NO FLUOR, NO STREAM CUT, MLKY WH CUT AFTER CRUSH, NO VIS STAIN, 20% CHRT; WH TO OFF WH, DENSE, HARD, TRC SH; DK GRY, SMOOTH, SOFT</p>	<p>90% LS; WH TO OFF WH, MED TO FINE XLN, BRITTLE, POOR PP POR, NO FLUOR, NO STREAM CUT, MLKY WH CUT AFTER CRUSH, NO VIS STAIN, 5% CHRT; WH TO OFF WH, DENSE, HARD, 5% SH; DK GRY, SMOOTH, SOFT</p>	<p>85% LS; OFF WH TO WH, FINE XLN, SOFT TO BRITTLE, POOR PP POR, MOTT YLW FLUOR, NO STRM CUT, MLKY YLW CUT AFTER CRUSH, NO VIS STAIN, NO ODOR, 5% CHRT; WH, DENSE, FROST, BRITTLE, 10% SH; GRY TO DK GRY, SMOOTH TXT, SOFT</p>
---	---	---	--

THANK YOU FROM ASHLEY BYERLEY, APRIL STEPHENS AND NOMAC SERVICES, LLC.