



WIRELINE
SERVICES, INC.
CHANOTE, KANSAS

**GAMMA RAY
NEUTRON
CEMENT BOND
COMPLETION LOG**

Company **KANSAS ENERGY COMPANY, LLC**
Well **GULLICK #KEC27-1**
Field **WAYSIDE-HAVANA**
County **MONTGOMERY State KANSAS**

Location: **AP1 #: 15-125-32235-00-00**

**1874' FSL & 679' FEL
NE SW NE SE
SEC 27 TWP 33S RGE 14E**

Other Services

Permanent Datum	GL	Elevation	871'EST	Elevation
Log Measured From	GL			K.B.
Drilling Measured From	GL			D.F.
				G.L. 871'EST

Date	7-16-12		
Run Number	1 NW		
Depth Driller			
Depth Logger	757.6'		
Top Log Interval	0		
Bottom Logged Interval	757.6'		
Fluid Level	FULL		
Type Fluid	WATER		
Production Casing	4.5" @ TD	@	@
Max Recorded Temp.			
Estimated Cement Top			
Calculated Cement Top			
Amount & Type Cement			
Amount & Type Admix			
Drilling Contractor			
Equipment Number	103		
Location			

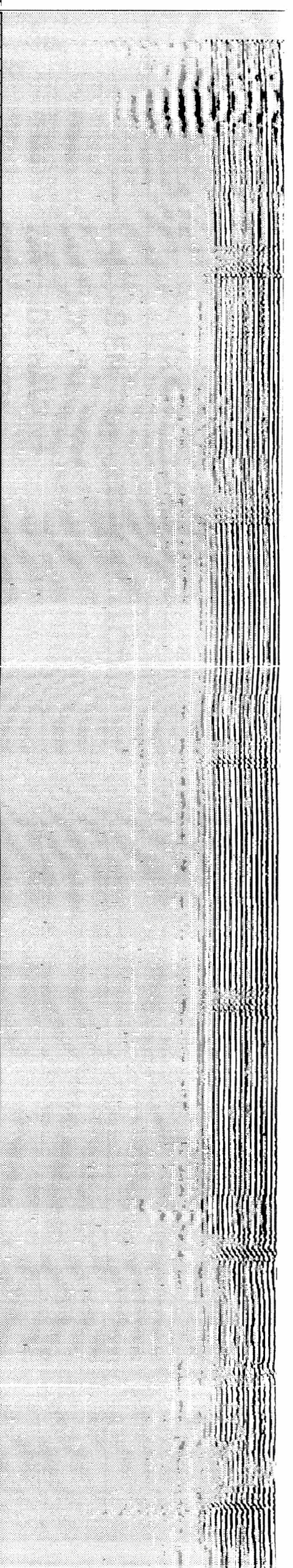
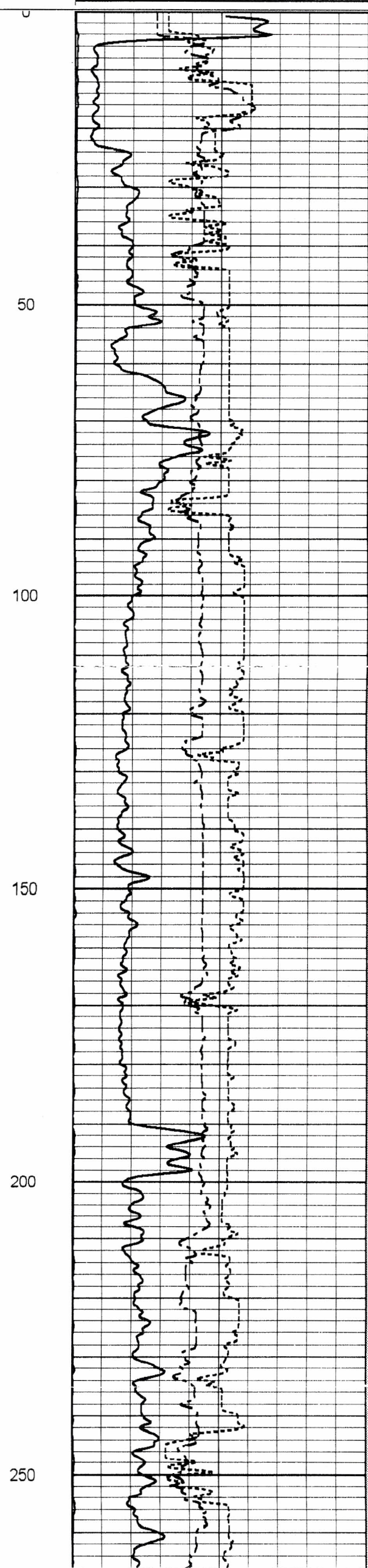
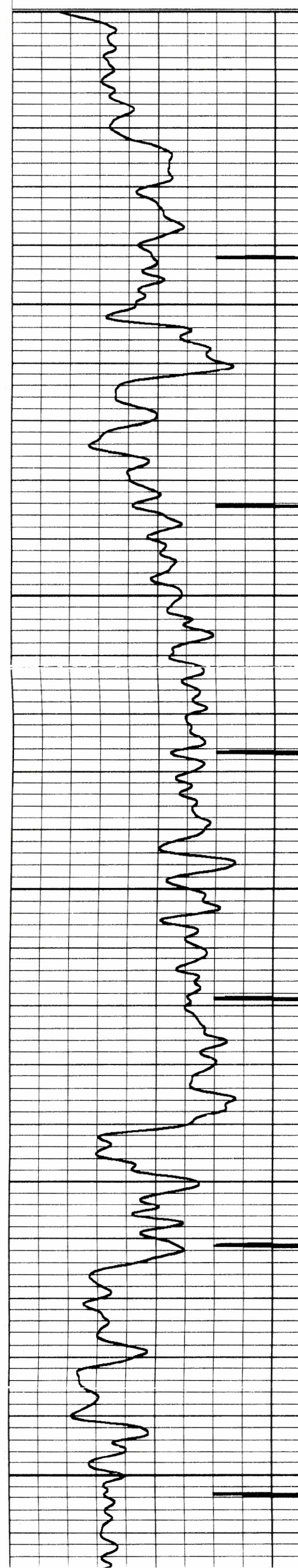
<< Fold Here >>>

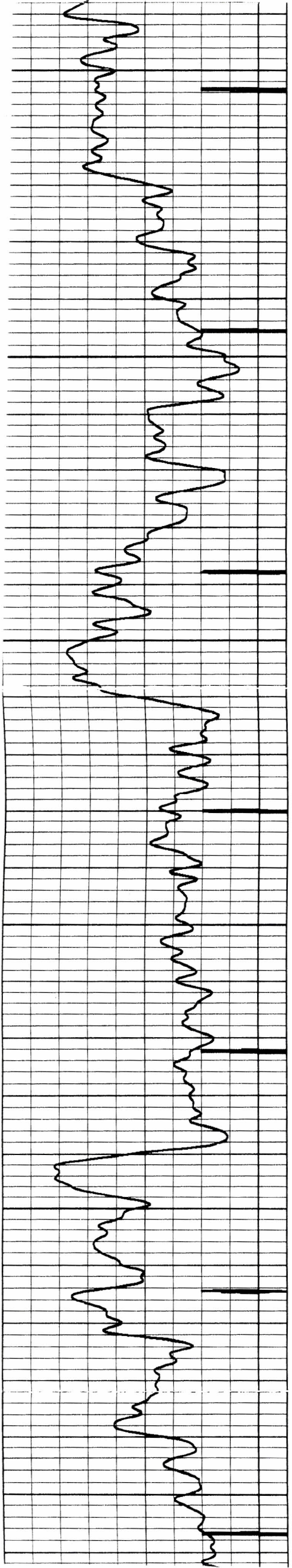
All interpretations are opinions based on inferences from electrical or other measurements and we cannot and do not guarantee the accuracy or correctness of any interpretation, and we shall not, except in the case of gross or willful negligence on our part, be liable or responsible for any loss, damages, or expenses incurred or sustained by anyone resulting from any interpretation made by any of our officers, agents or employees. These interpretations are also subject to our general terms and conditions set out in our current Price Schedule.

Comments

THANK YOU

Sensor	Offset (ft)	Schematic	Description	Len (ft)	OD (in)	Wt (lb)





250

300

350

400

450

500

