



Pioneer Energy Services

Borehole Compensated Sonic Log

15-145-21,685-00-00

API No.	15-145-21,685-00-00		
Company	Carmen Schmitt, Inc.		
Well	Tombaugh Unit No.1		
Field	Wildcat		
County	Pawnee		
State	Kansas		
Location	230' FSL & 2440' FWL		
Sec: 26	Twp: 20S	Rge: 20W	
Permanent Datum	Ground Level	Elevation 2145	
Log Measured From	Kelly Bushing	5 Ft. Above Perm. Datum	
Drilling Measured From	Kelly Bushing		
Date	9/8/2012		
Run Number	Two		
Type Log	BHC Sonic		
Depth Driller	4280		
Depth Logger	4257		
Bottom Logged Interval	4246		
Top Logged Interval	1200		
Type Fluid In Hole	Chemical		
Salinity, PPM CL	7.200		
Density	9.4		
Level	Full		
Max. Rec. Temp. F	119		
Operating Rig Time	5 Hours		
Equipment -- Location	17 Days		
Recorded By	C. Desaire		
Witnessed By	Marc Downing		

Other Services
CNL/CDL
MEL/DIL

Elevation
K.B. 2150
D.F.
G.L. 2145

Borehole Record	Casing Record
-----------------	---------------

Run No.	Bit	From	To	Size	Wgt.	From	To
1	12.25	00	1228	8.625	24#	00	1228
2	7.875	1228	4280				

<<< Fold Here >>>

All interpretations are opinions based on inferences from electrical or other measurements and we cannot and do not guarantee the accuracy or correctness of any interpretation, and we shall not, except in the case of gross or willful negligence on our part, be liable or responsible for any loss, costs, damages, or expenses incurred or sustained by anyone resulting from any interpretation made by any of our officers, agents or employees. These interpretations are also subject to our general terms and conditions set out in our current Price Schedule.

Comments

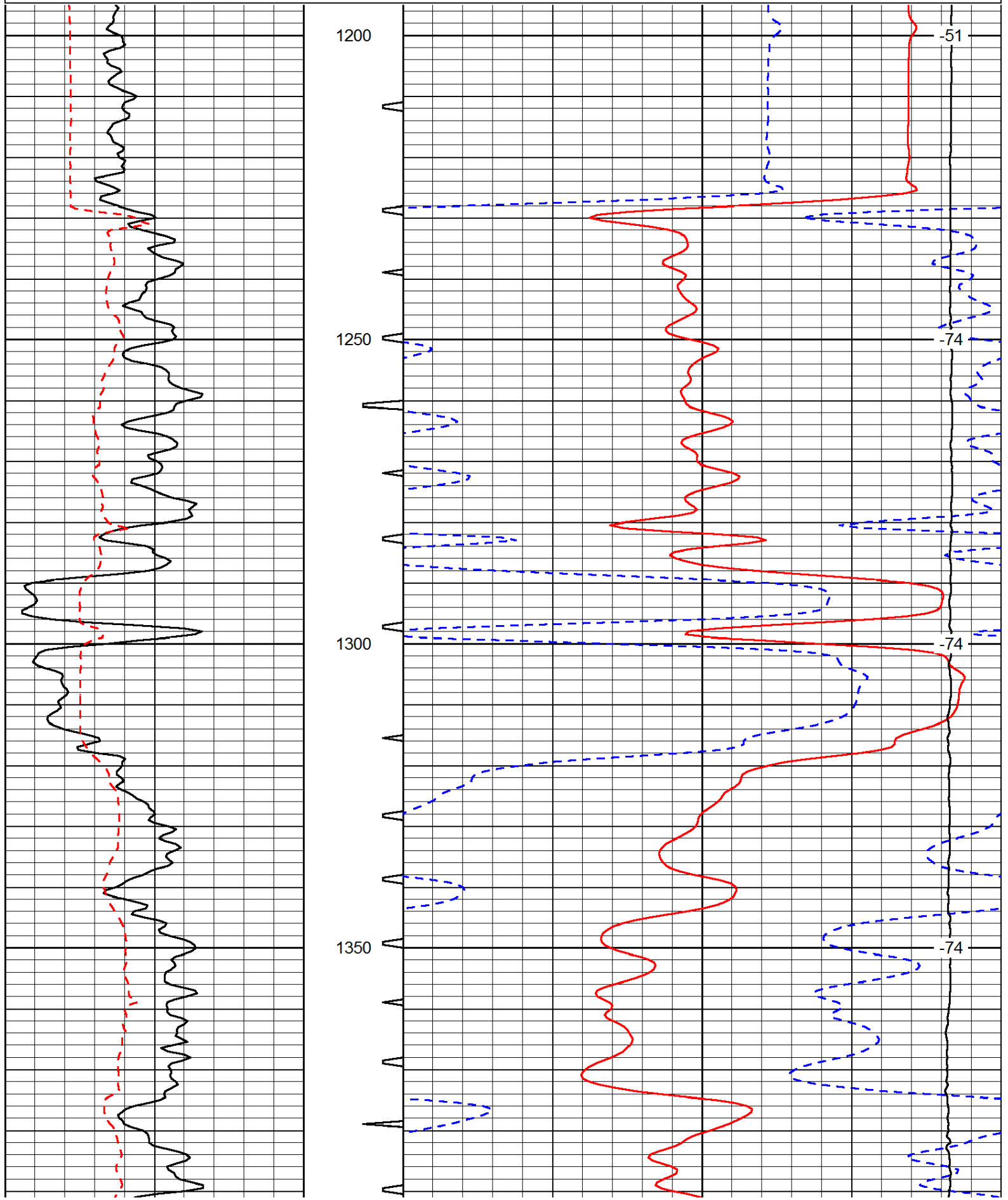
Thank you for using Pioneer Energy Services
www.pioneerenergy.com
 785 625 3858

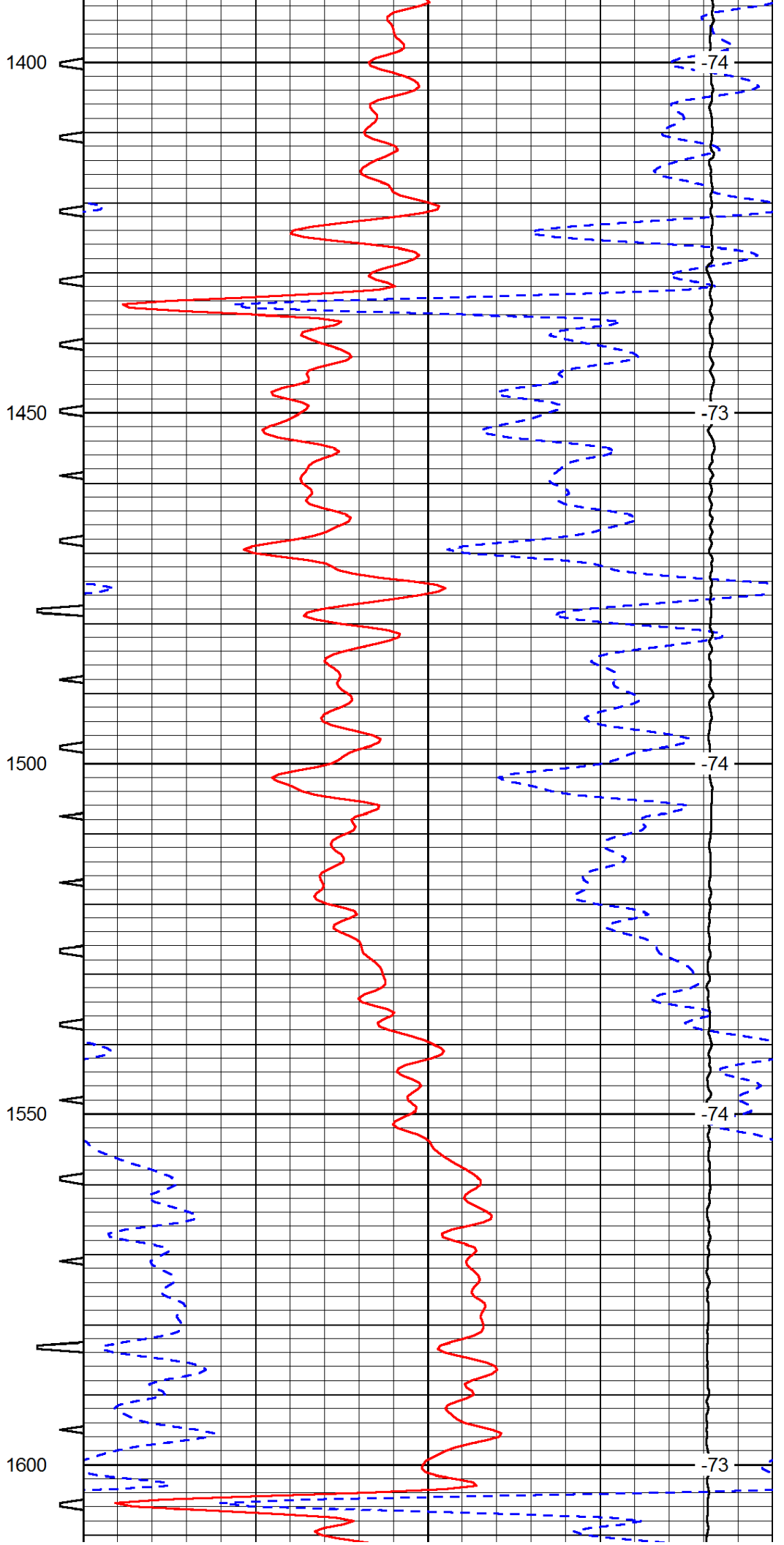
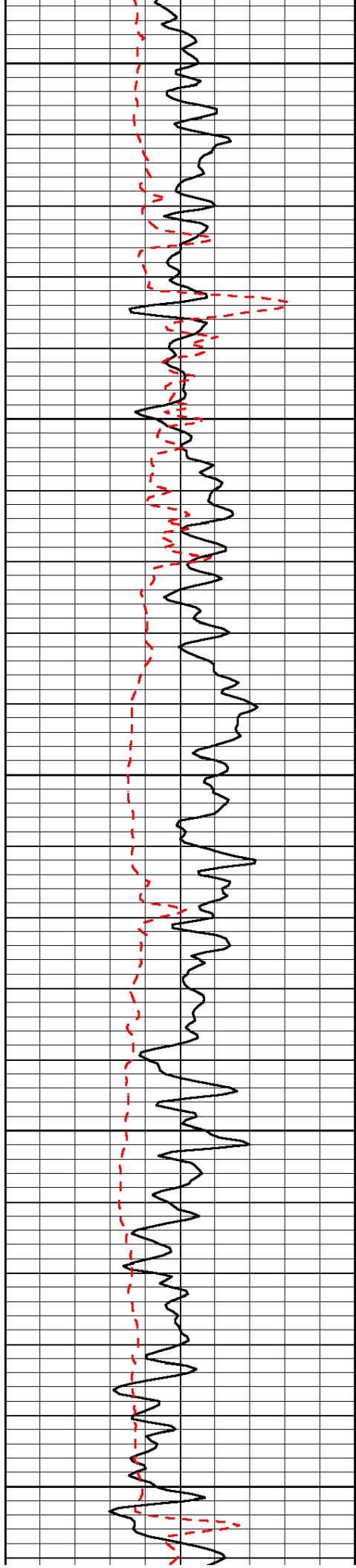
 Alexander KS, 13 S to U Rd, 2 1/2 E, N Into

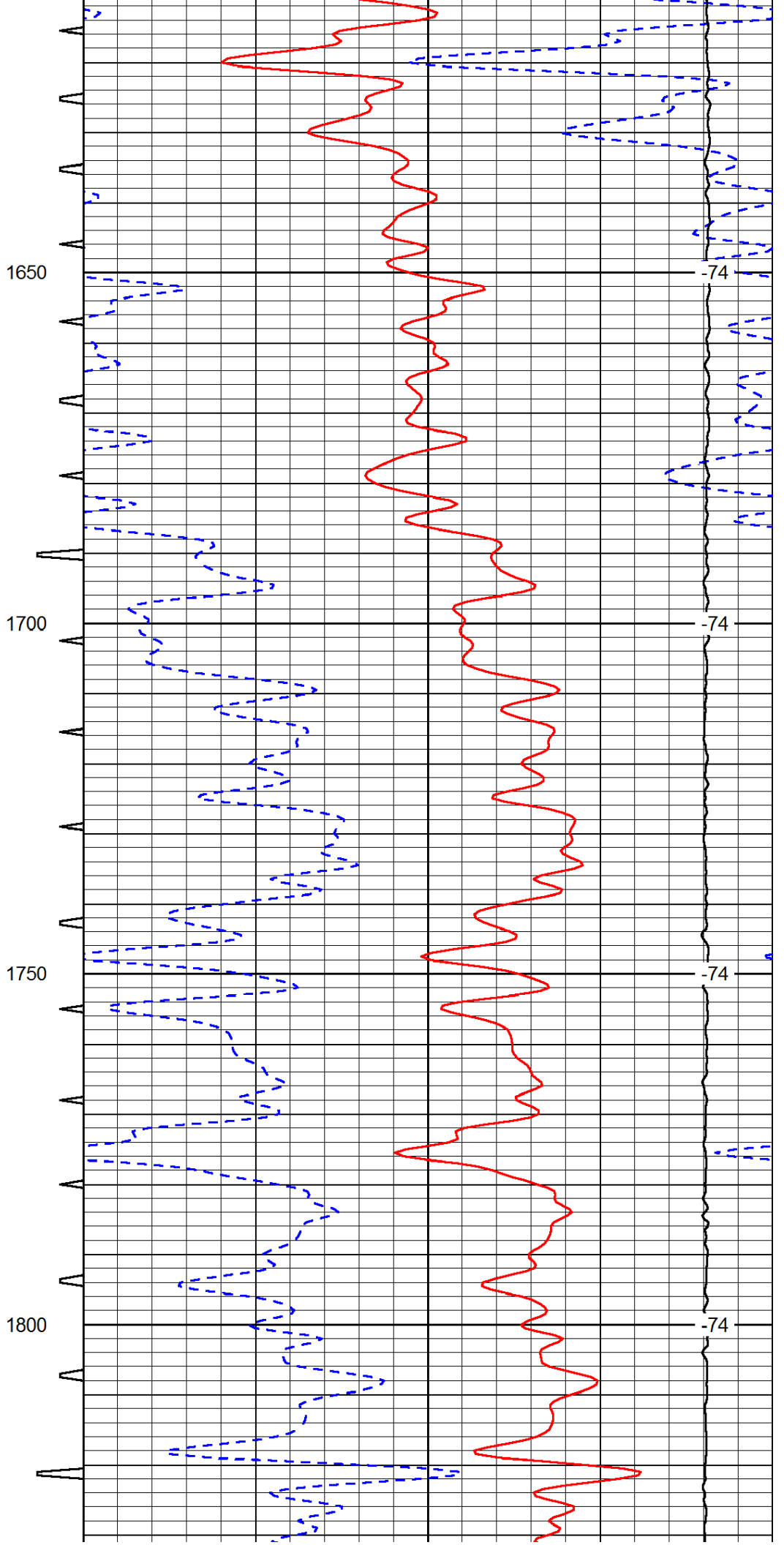
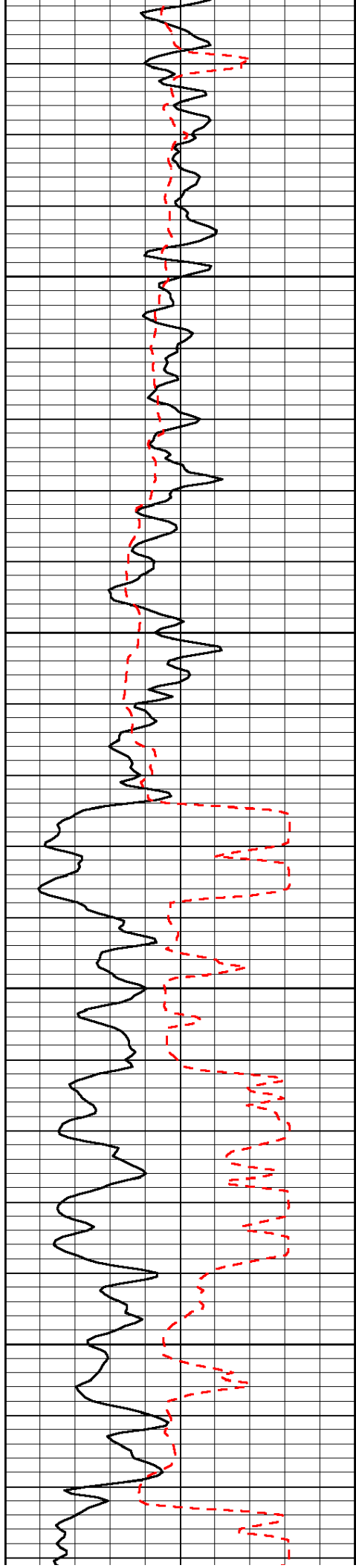
Database File: c:\warrior\data\carmen schmitt_tombaugh unit no.1\carmhd.db
 Dataset Pathname: dil/carmstk
 Presentation Format: sonic
 Dataset Creation: Sat Sep 08 14:40:57 2012
 Charted by: Depth in Feet scaled 1:240

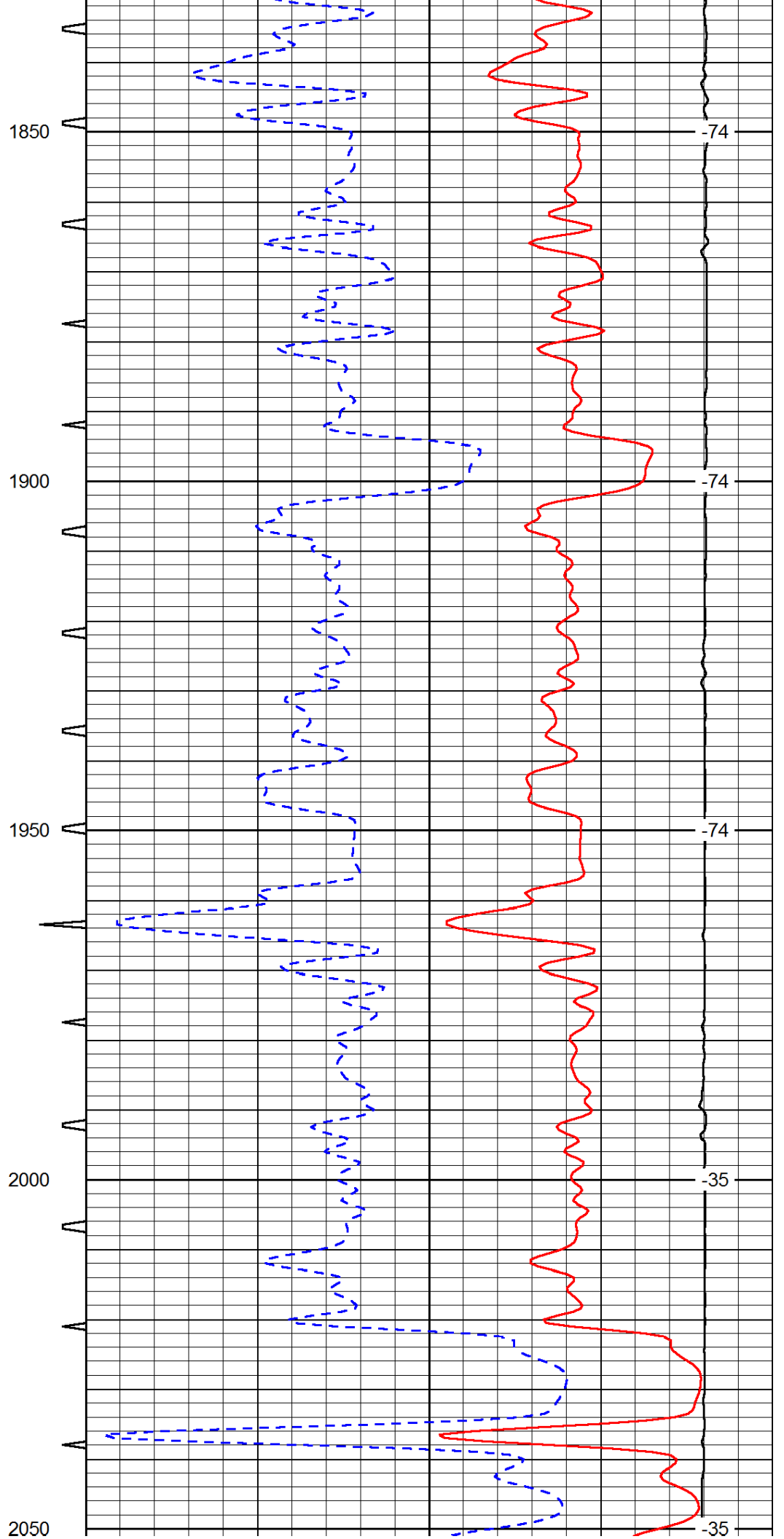
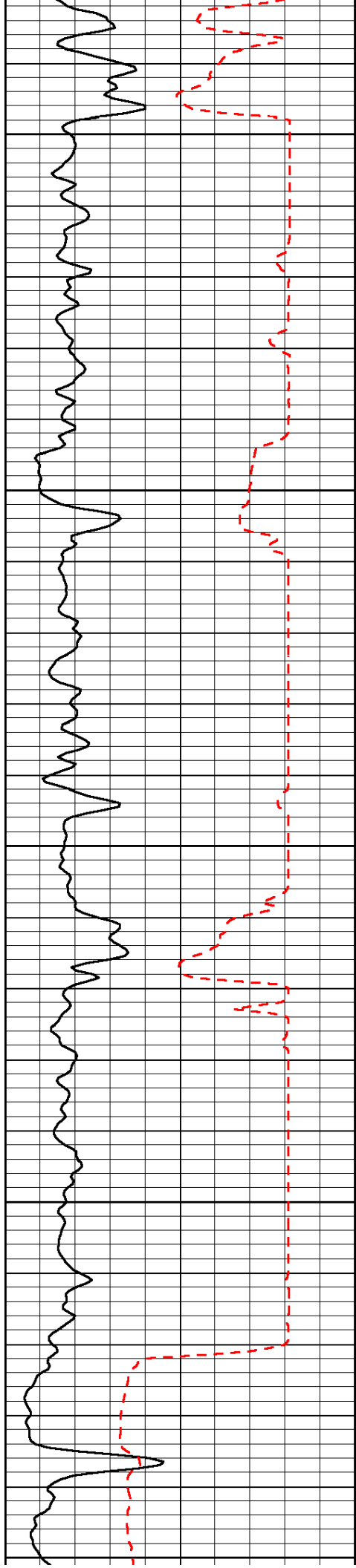
0	Gamma Ray	150	Sonic Int	140	Delta Time (usec/ft)	40
150	Gamma Ray	300	5	0	SPOR	-10
6	Caliper (GAPI)	16		15000	LTEN (lb)	0

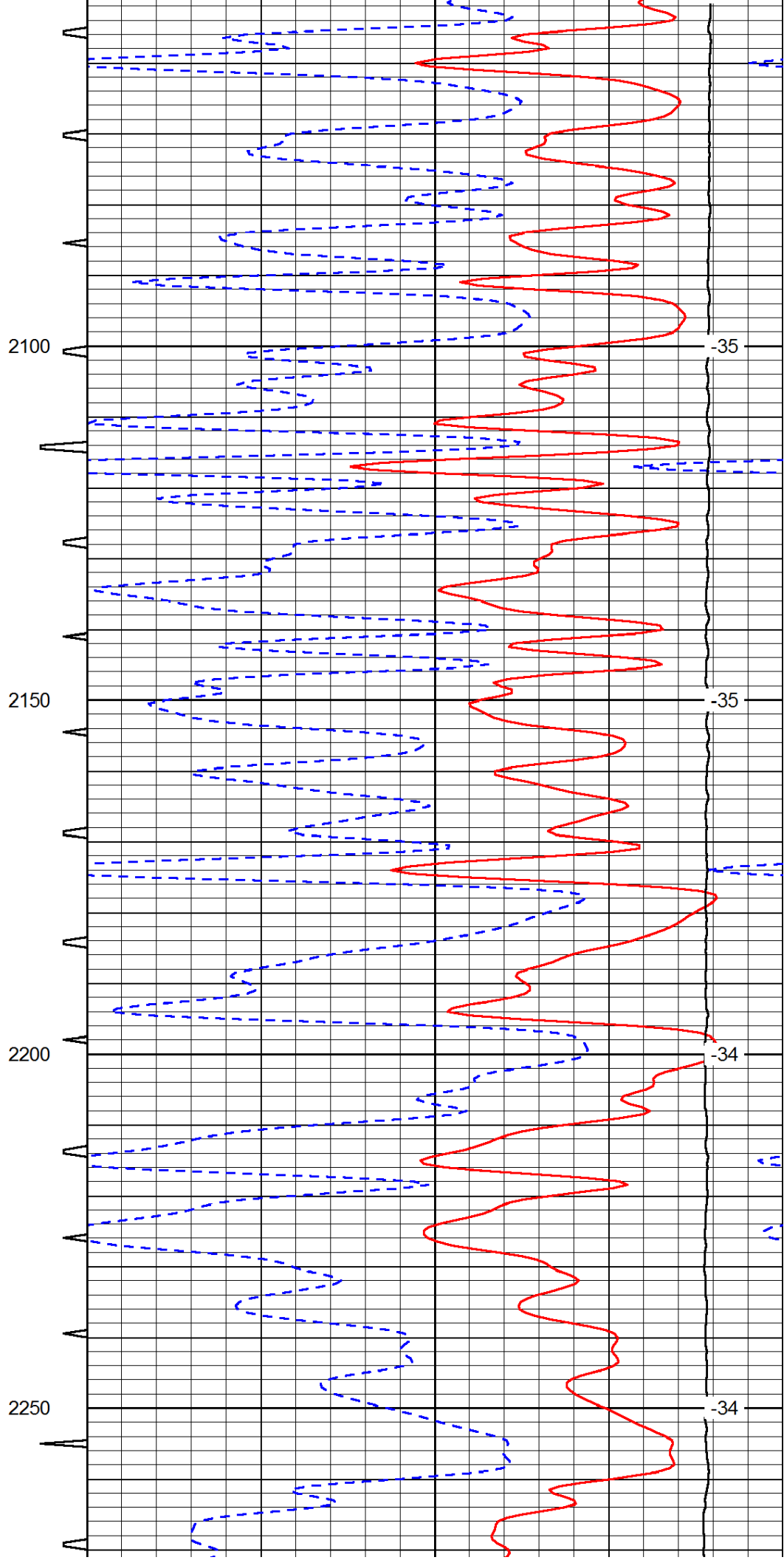
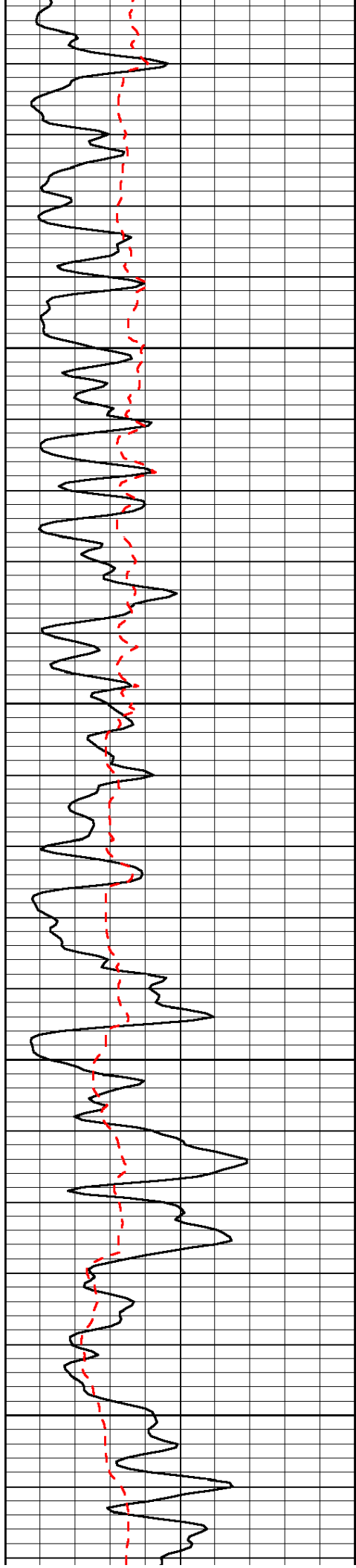
LSPD

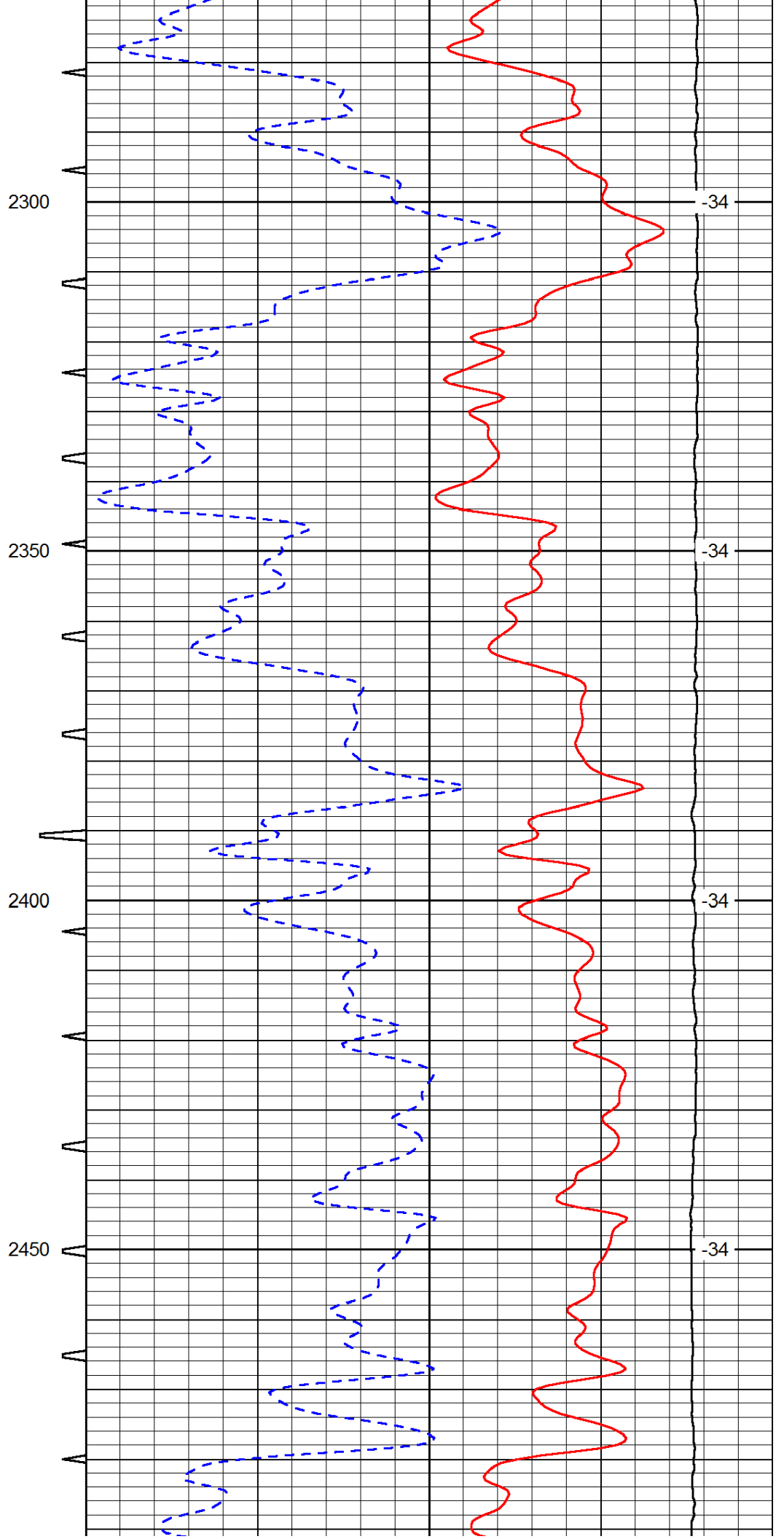
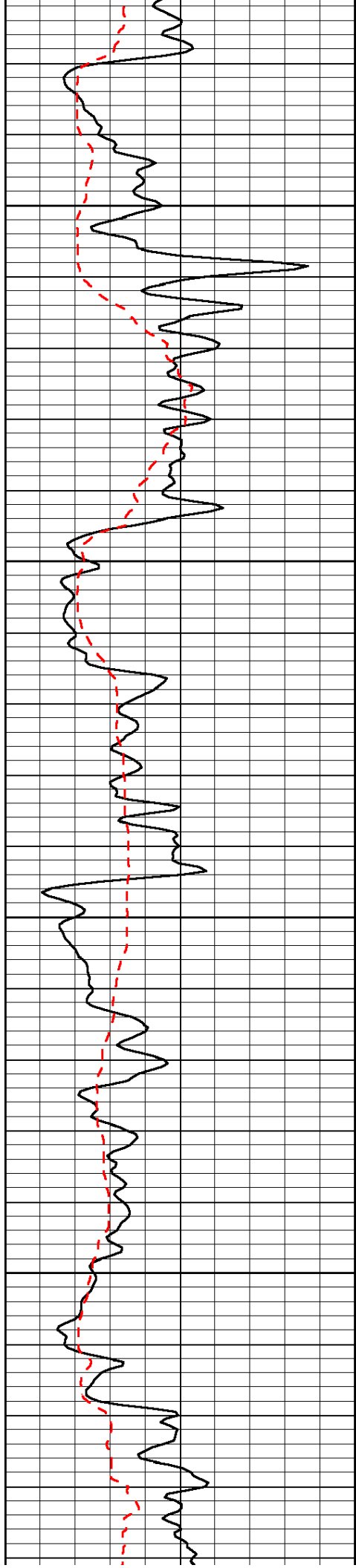


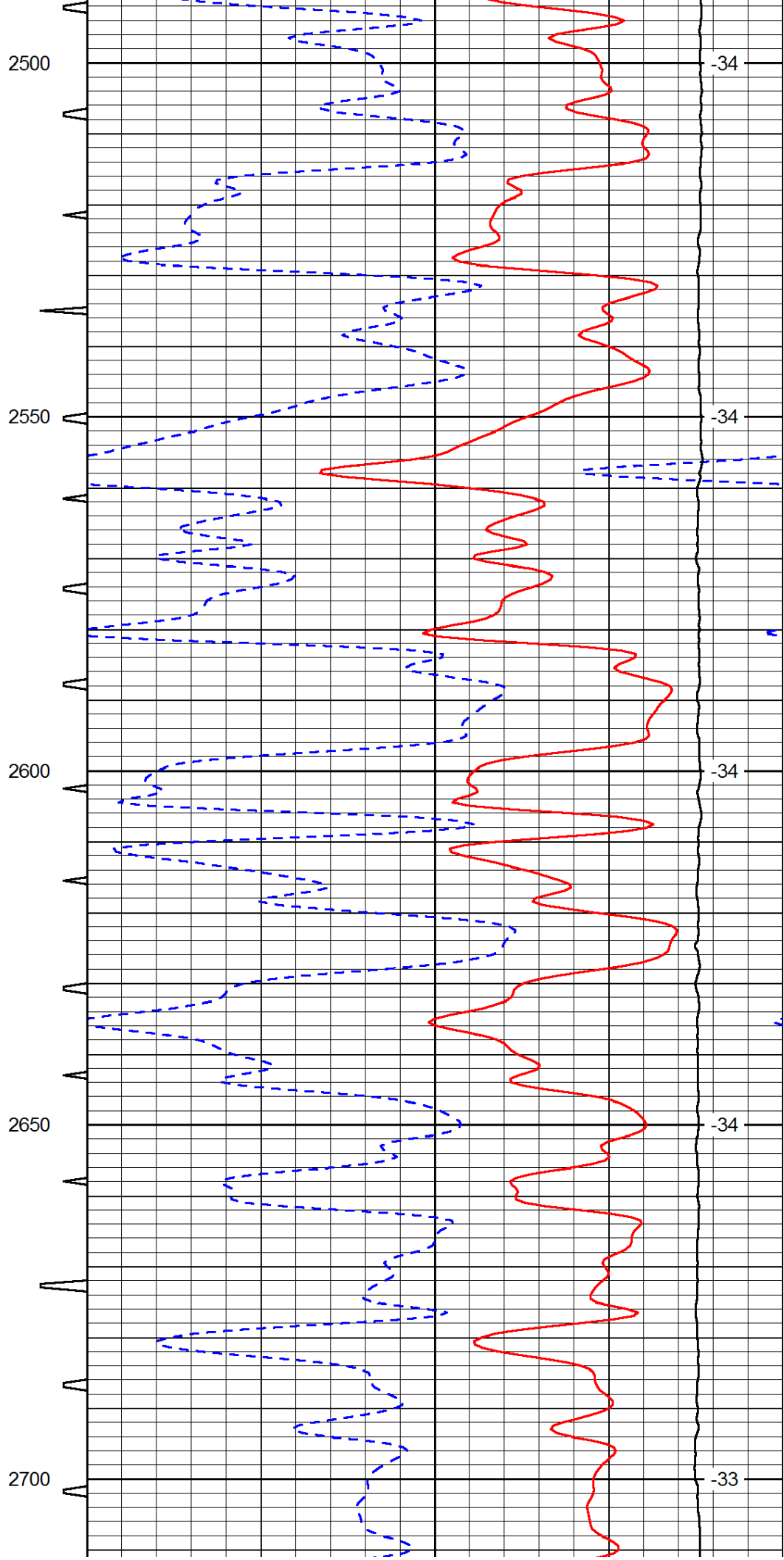
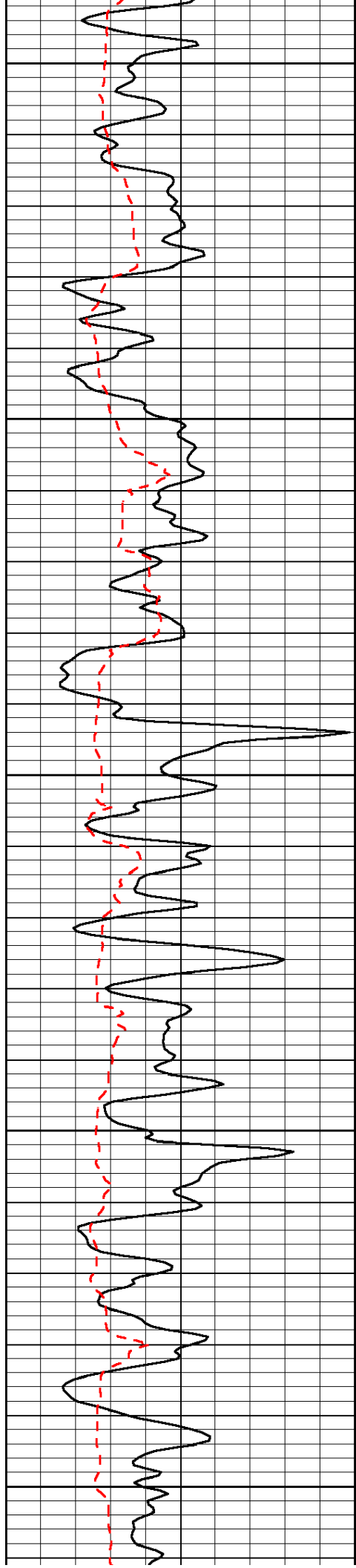


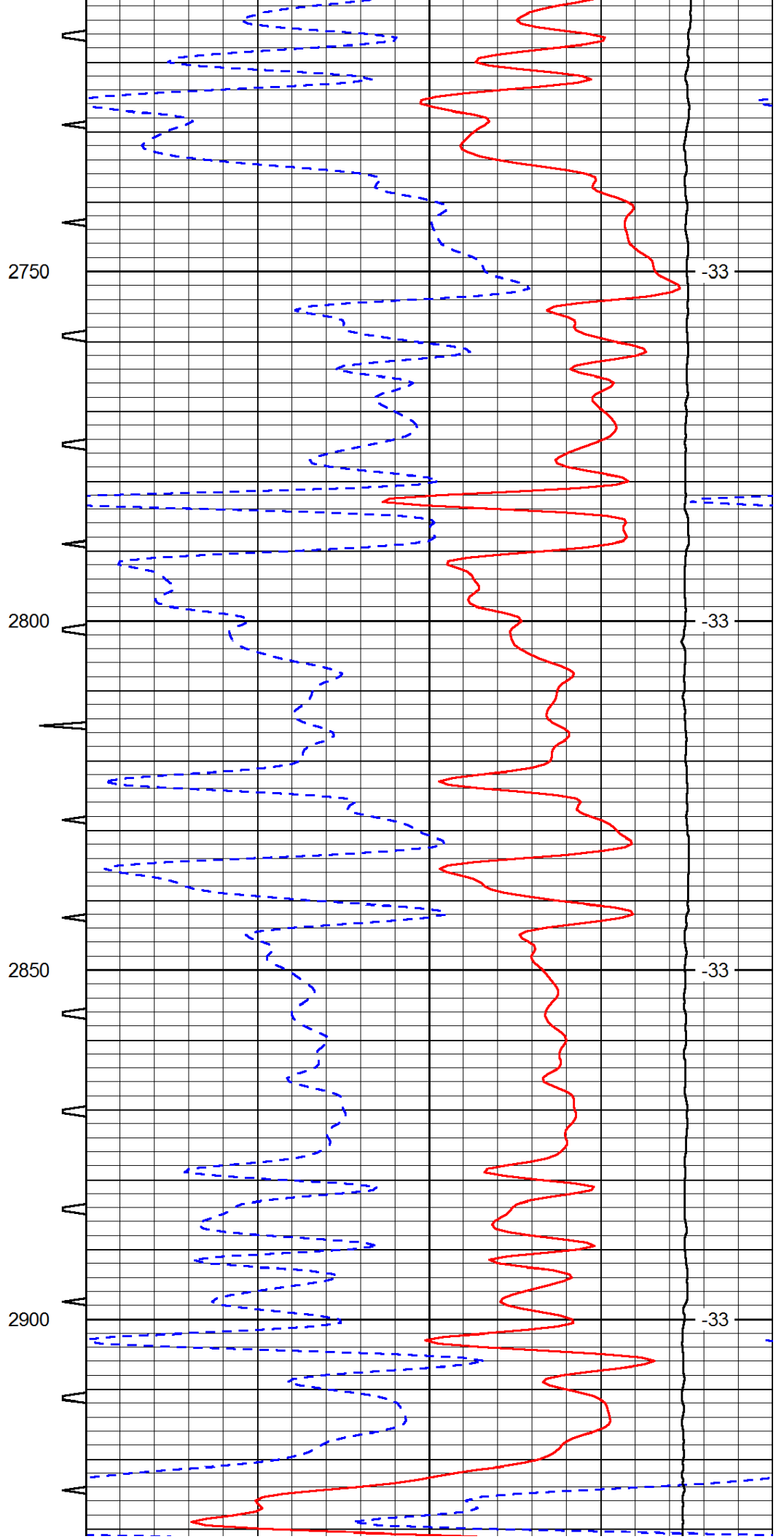
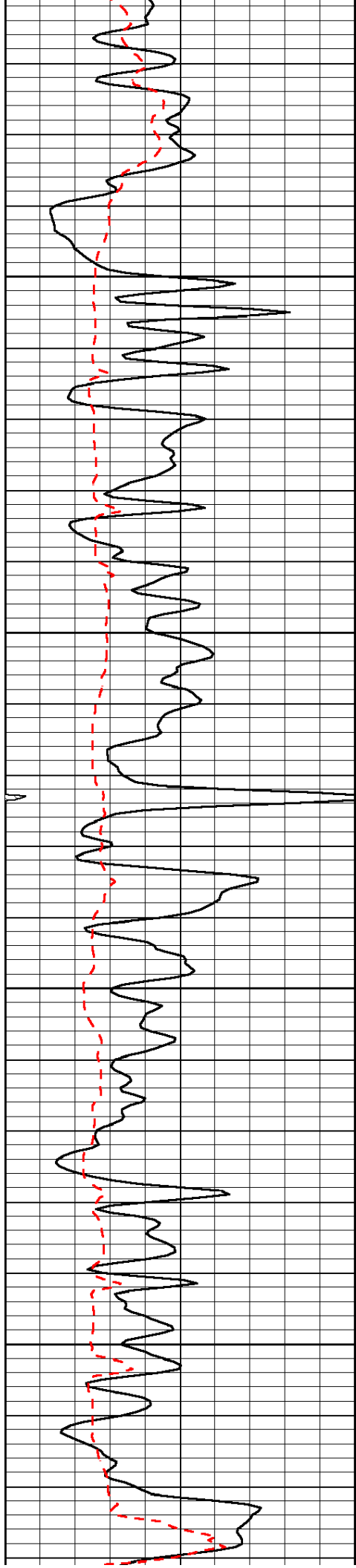


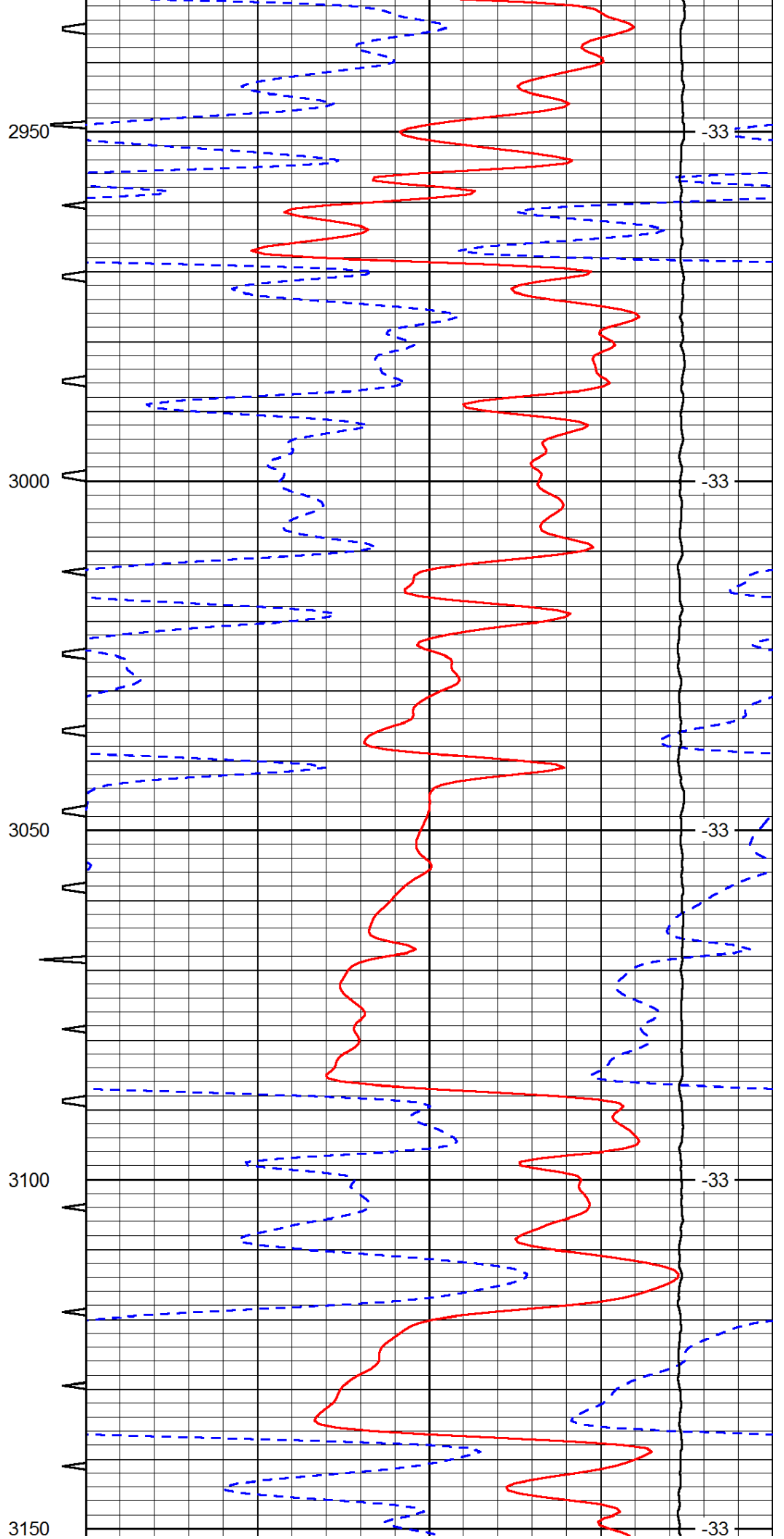
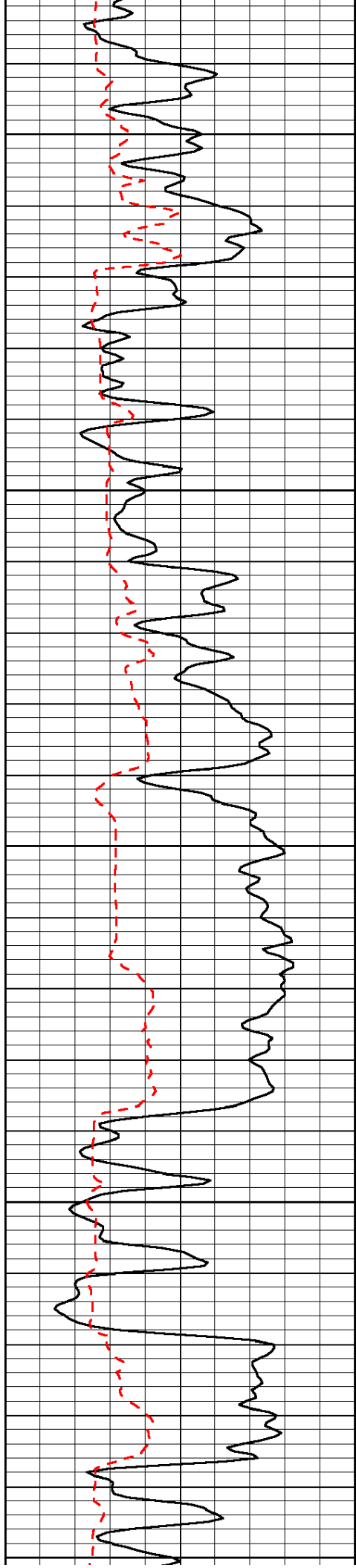


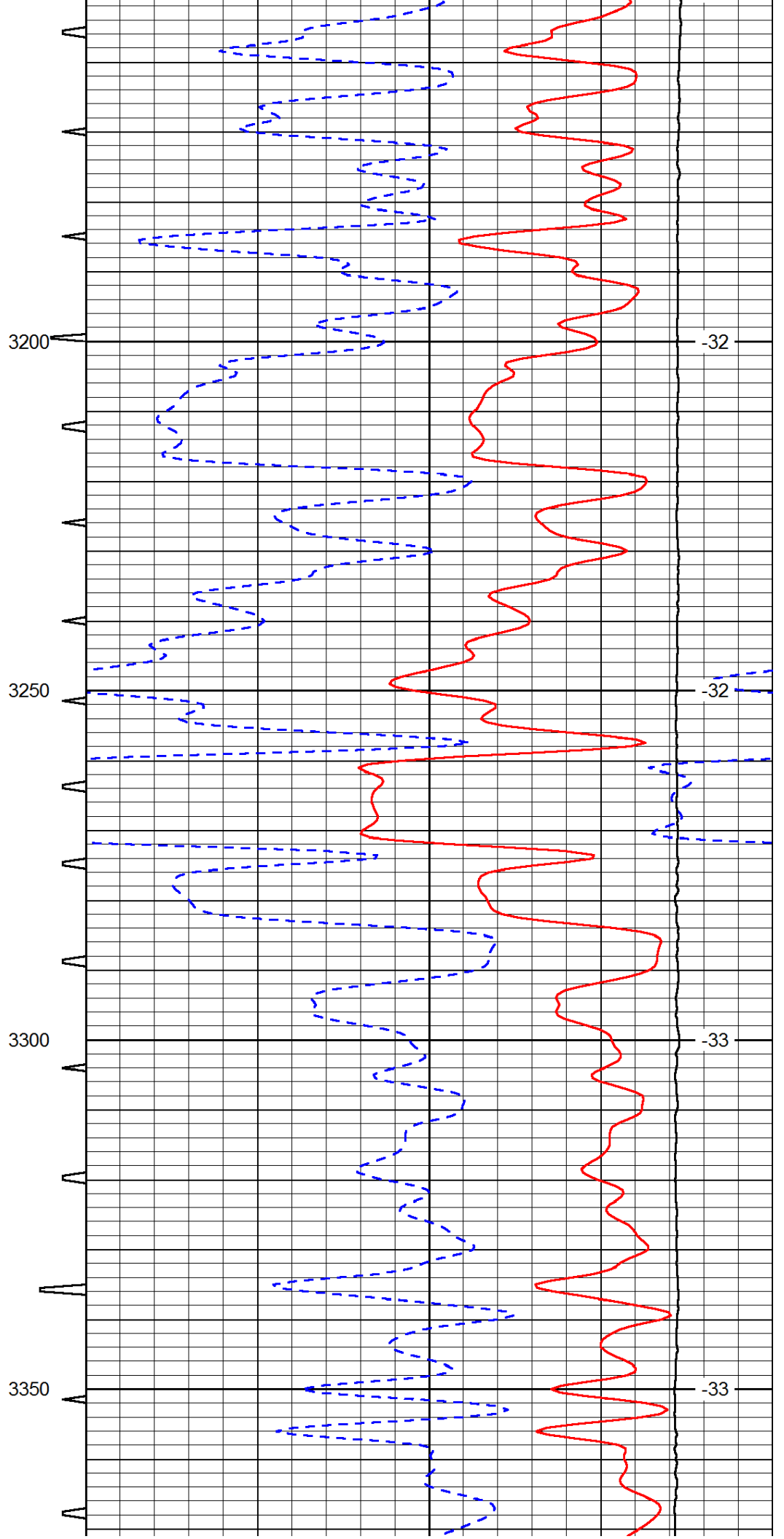
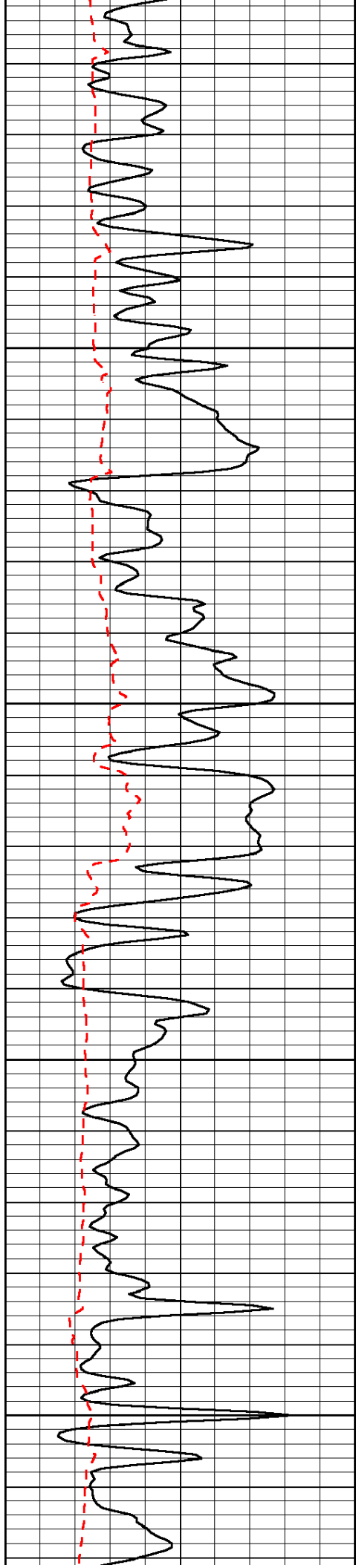


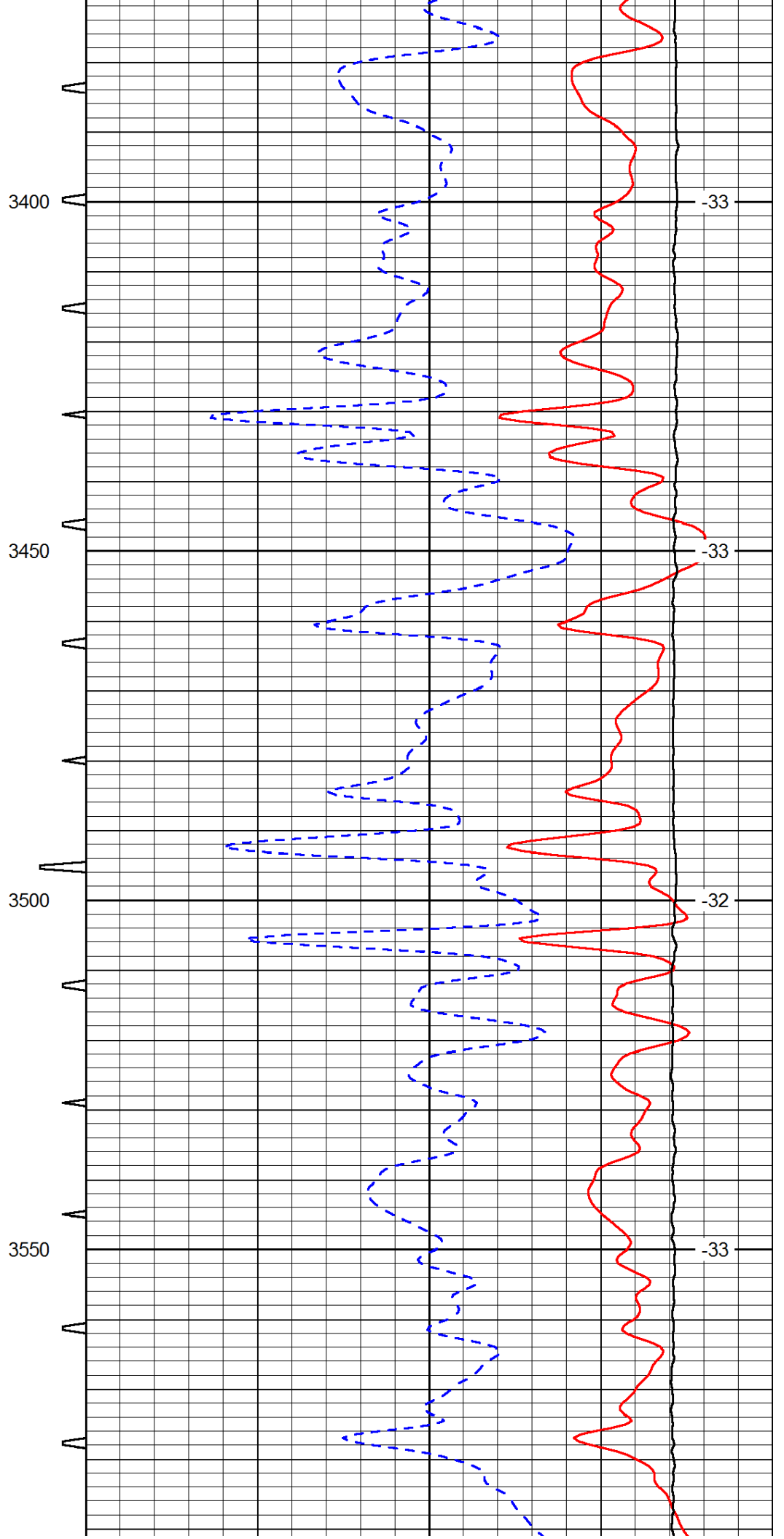
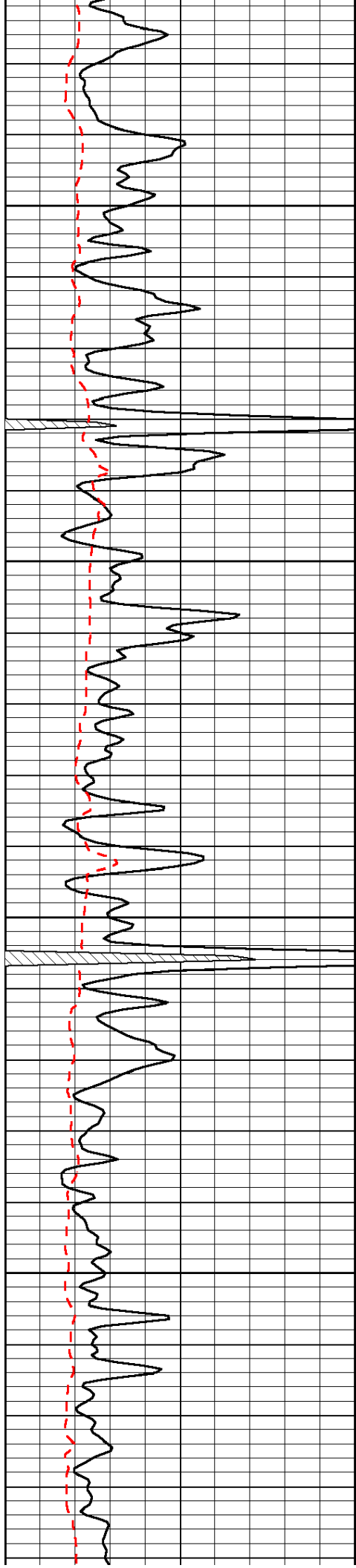


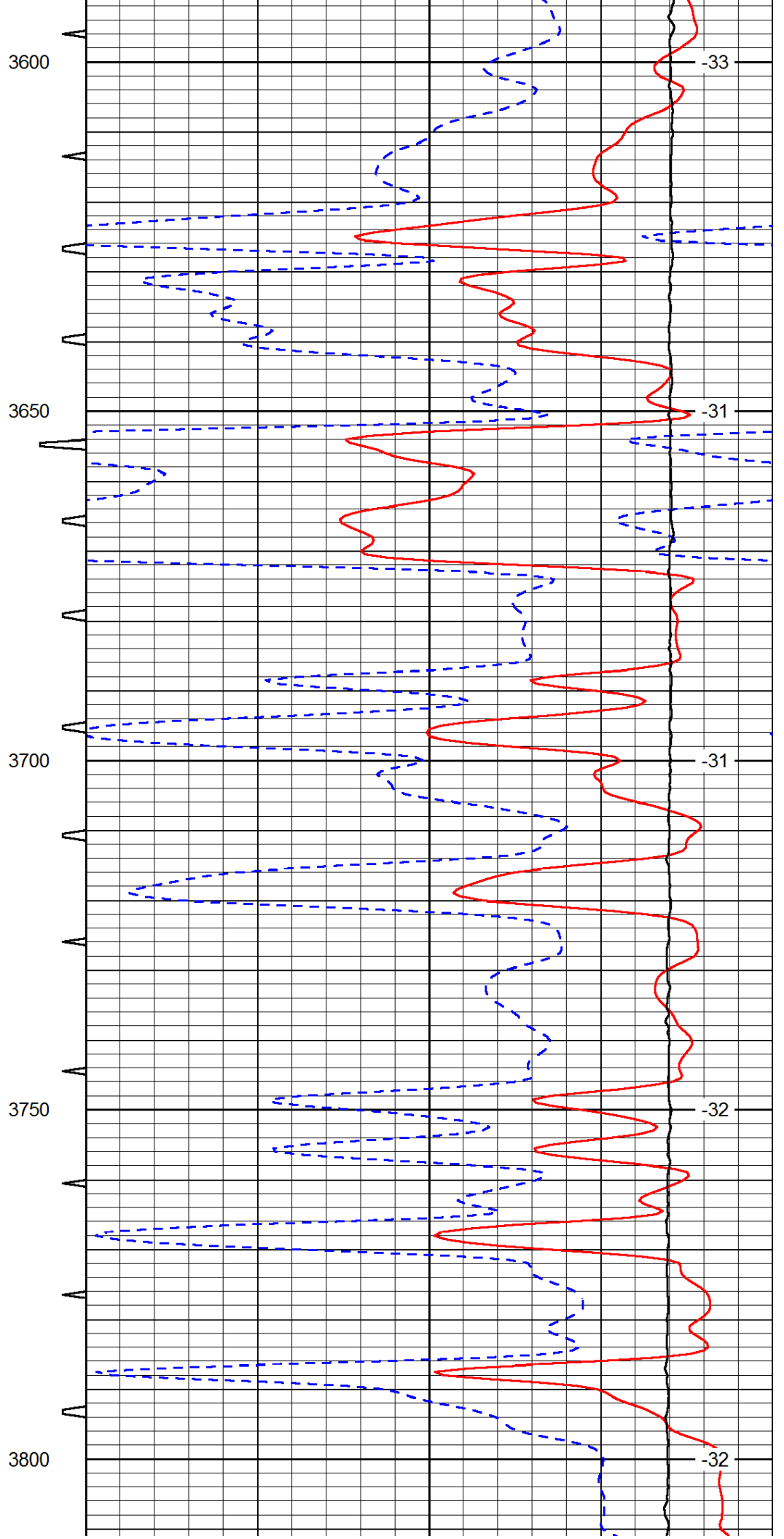
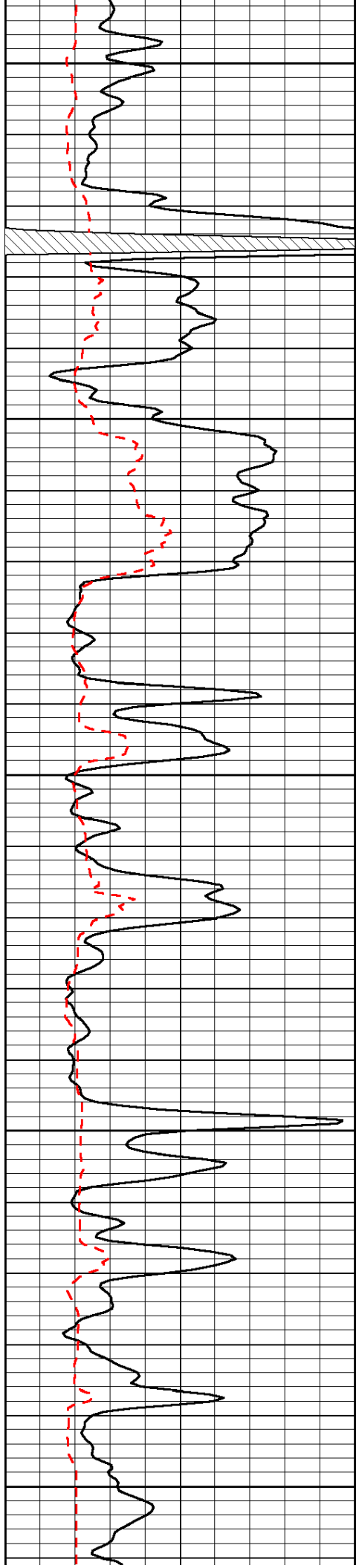


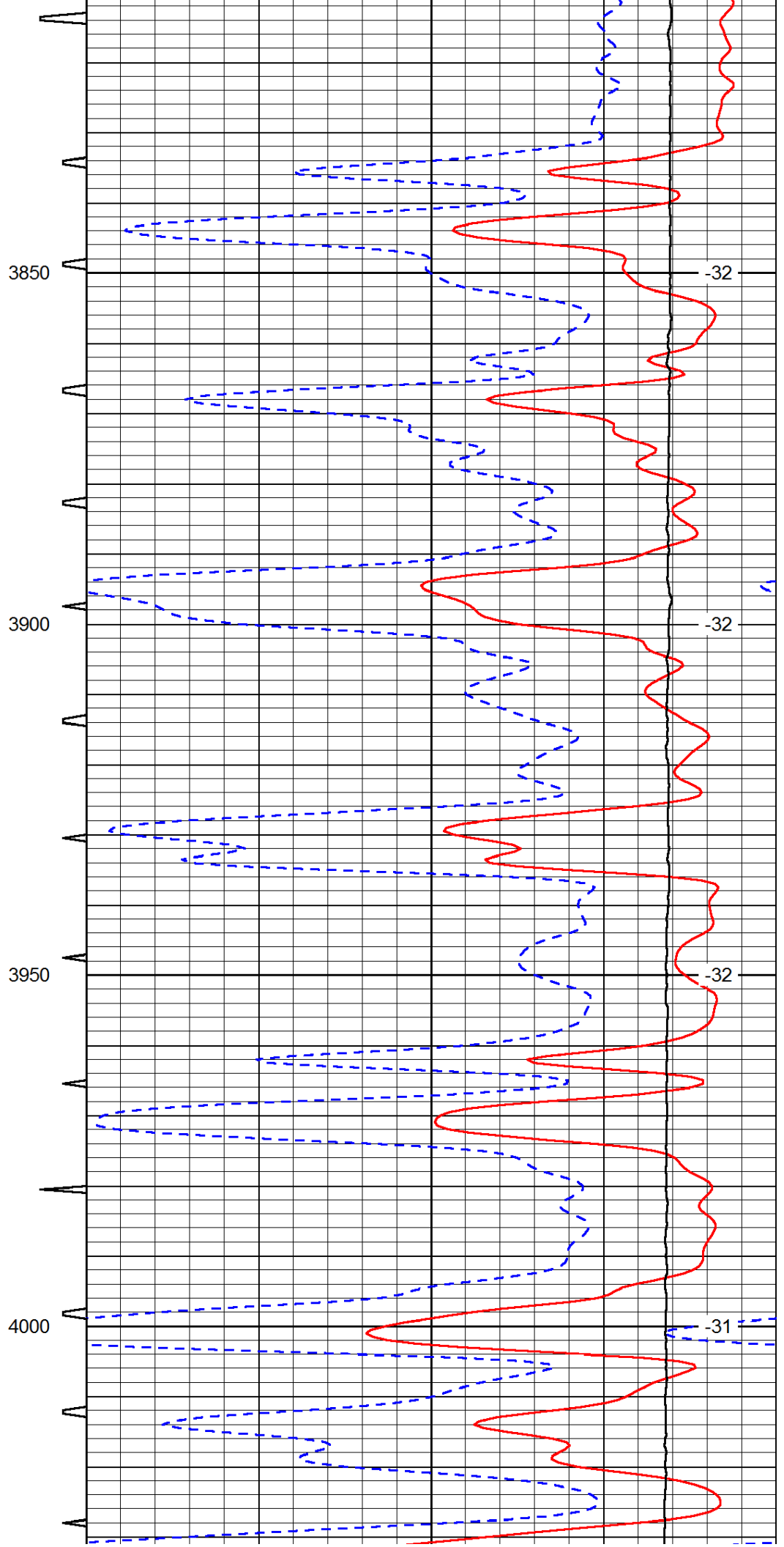
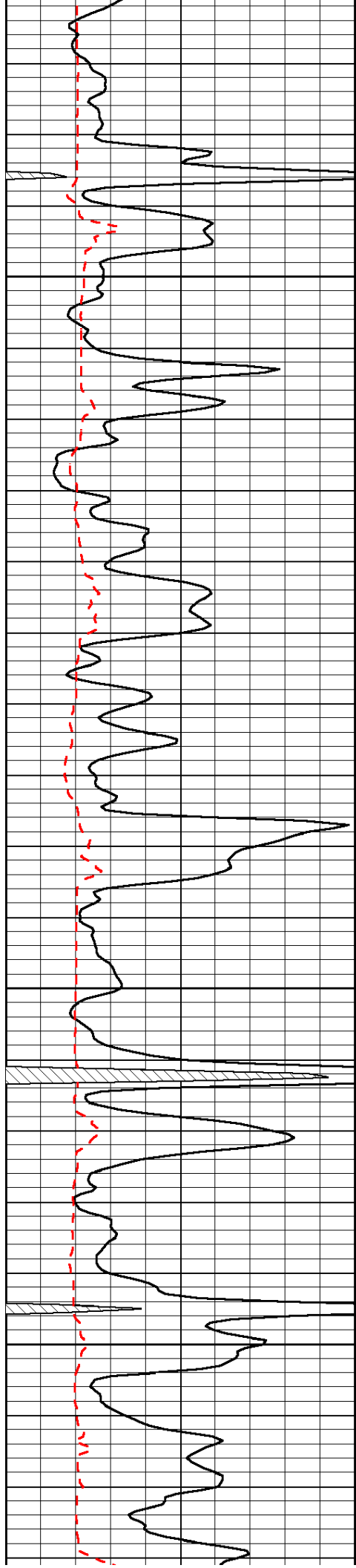


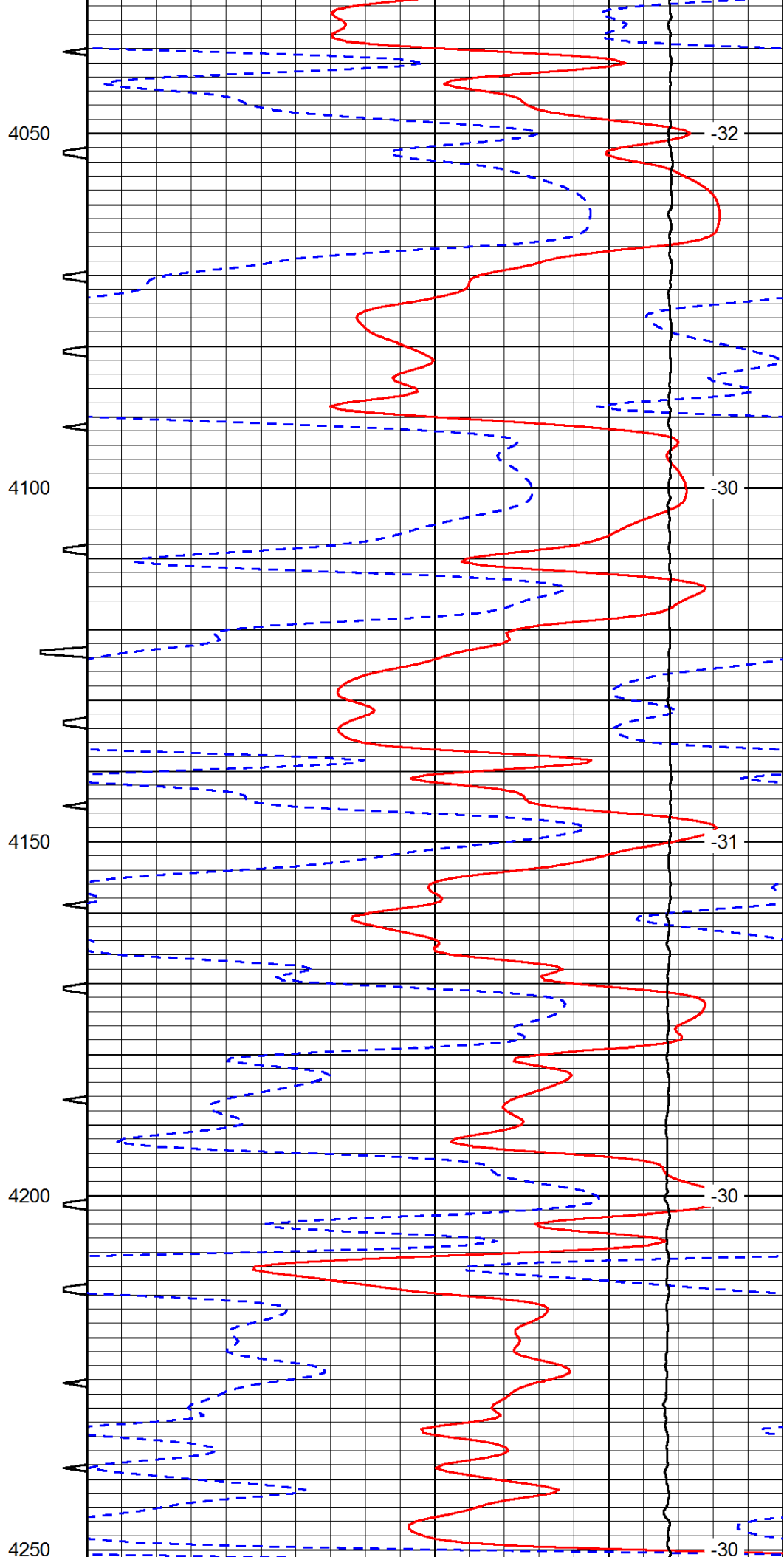
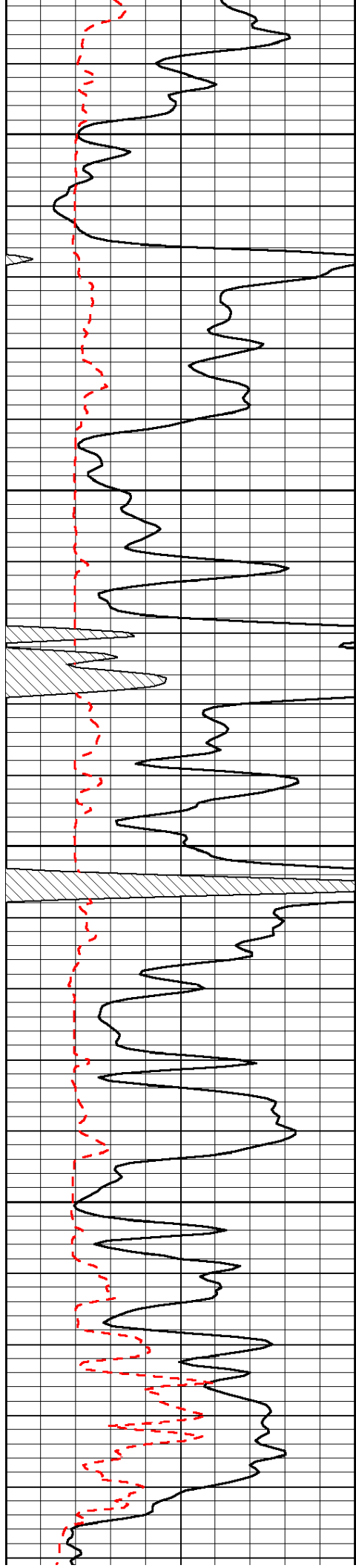


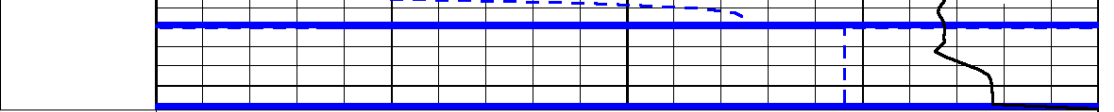
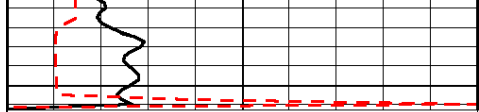












0	Gamma Ray	150	Sonic Int	140	Delta Time (usec/ft)	40
150	Gamma Ray	300	5	0	SPOR	-10
6	Caliper (GAPI)	16		15000	LTEN (lb)	0
						LSPD