



Pioneer Energy Services

Dual Induction Log

15-145-21,685-00-00

API No.

Company **Carmen Schmitt, Inc.**
 Well **Tombaugh Unit No.1**
 Field **Wildcat**
 County **Pawnee** State **Kansas**

Location

230' FSL & 2440' FWL

Other Services
 CNL/CDL
 MEL/BHCS

Sec: 26 Twp: 20S Rge: 20W

Permanent Datum Ground Level Elevation 2145
 Log Measured From Kelly Bushing 5 Ft. Above Perm. Datum
 Drilling Measured From Kelly Bushing

Elevation
 K.B. 2150
 D.F. 2145
 G.L. 2145

Date	9/8/2012	
Run Number	One	
Depth Driller	4280	
Depth Logger	4257	
Bottom Logged Interval	4256	
Top Log Interval	1200	
Casing Driller	8.625 @ 1228	
Casing Logger	1228	
Bit Size	7.875	
Type Fluid in Hole	Chemical	
Salinity,ppm CL	7.200	
Density / Viscosity	9.4 59	
pH / Fluid Loss	9.0 11.2	
Source of Sample	Flowline	
Rm @ Meas. Temp	.45 @ 72	
Rmf @ Meas. Temp	.34 @ 72	
Rmc @ Meas. Temp	.61 @ 72	
Source of Rmf / Rmc	Charts	
Rm @ BHT	.27 @ 119	
Operating Rig Time	5 Hours	
Max Rec. Temp. F	119	
Equipment Number	17	
Location	Hays	
Recorded By	C. Desaire	
Witnessed By	Marc Downing	

<<< Fold Here >>>

All interpretations are opinions based on inferences from electrical or other measurements and we cannot and do not guarantee the accuracy or correctness of any interpretation, and we shall not, except in the case of gross or willful negligence on our part, be liable or responsible for any loss, costs, damages, or expenses incurred or sustained by anyone resulting from any interpretation made by any of our officers, agents or employees. These interpretations are also subject to our general terms and conditions set out in our current Price Schedule.

Comments

Thank you for using Pioneer Energy Services
www.pioneerenergy.com
 785 625 3858

Alexander KS, 13 S to U Rd, 2 1/2 E, N Into

Database File: c:\warrior\data\carmen schmitt_tombaugh unit no.1\carmhd.db
 Dataset Pathname: dil/carmstk
 Presentation Format: dil2in
 Dataset Creation: Sat Sep 08 14:40:57 2012
 Charted by: Depth in Feet scaled 1:600

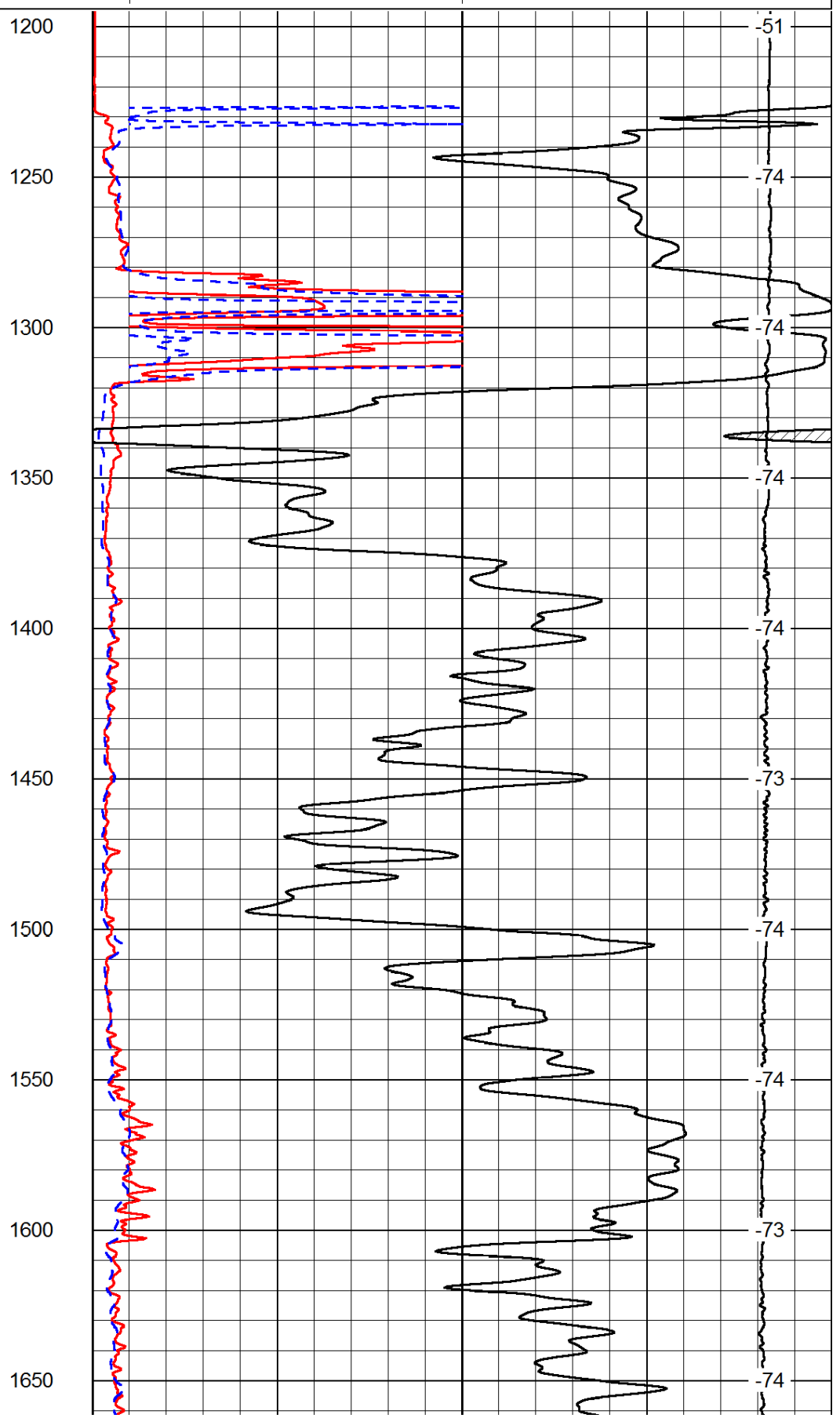
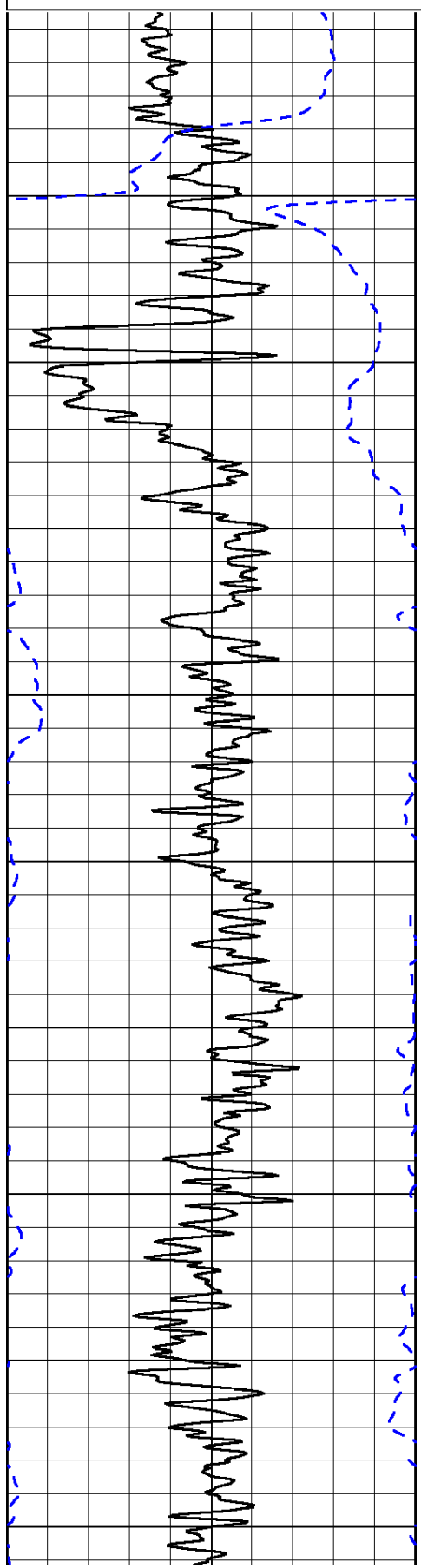
0	Gamma Ray	150
-200	SP (mV)	0

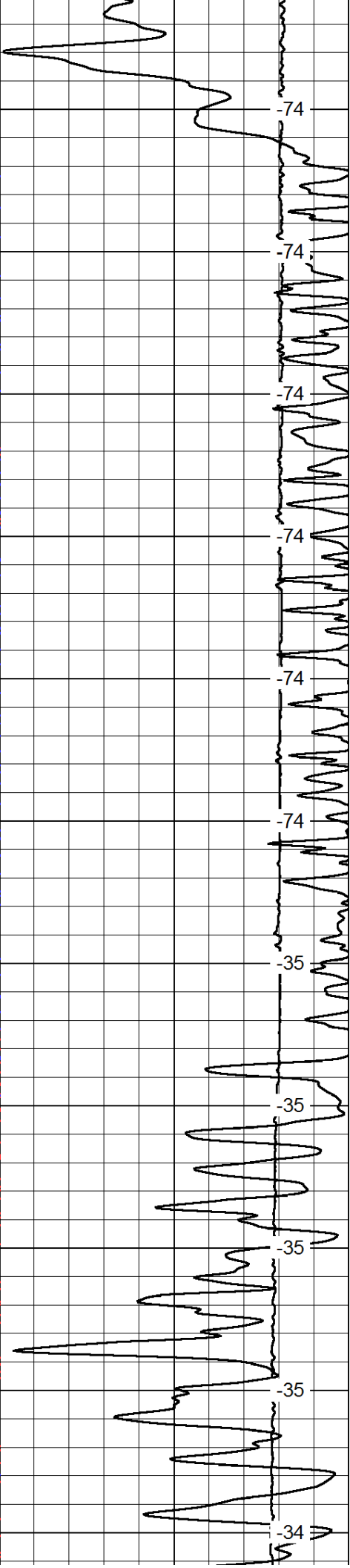
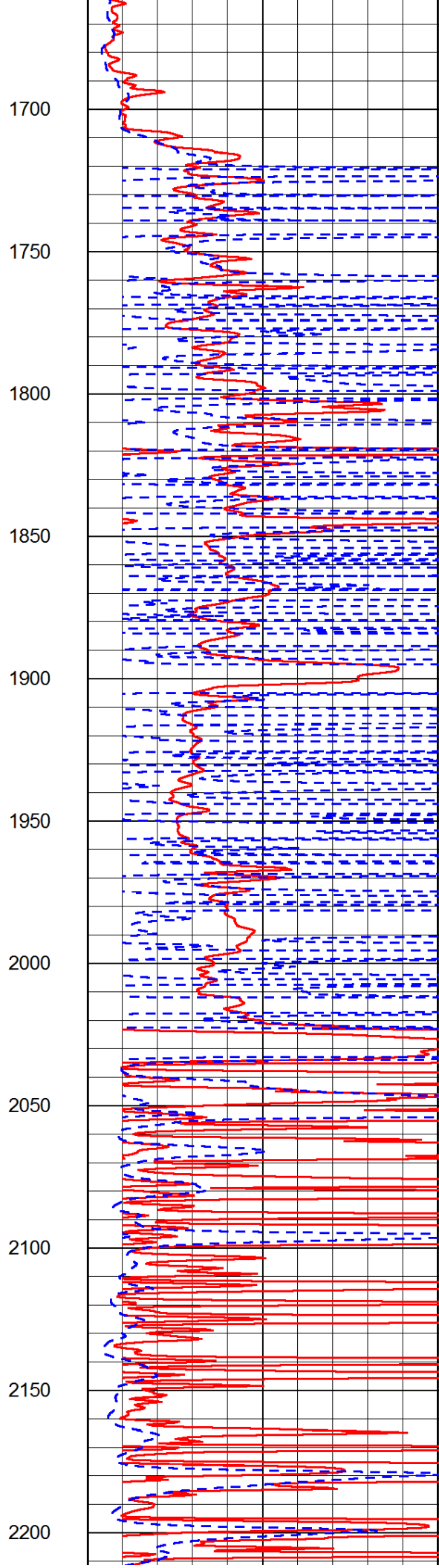
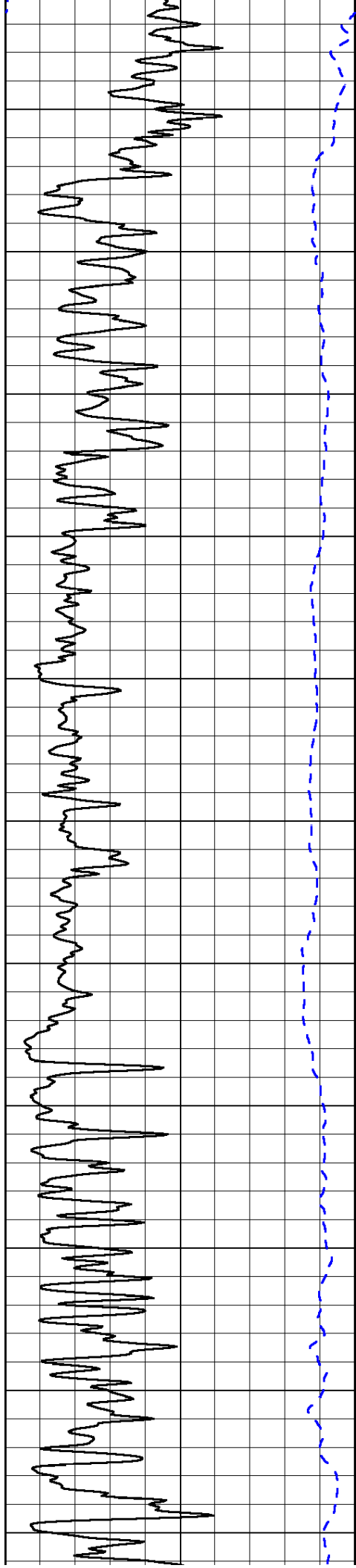
0	Shallow Resistivity	50
0	Deep Resistivity	50

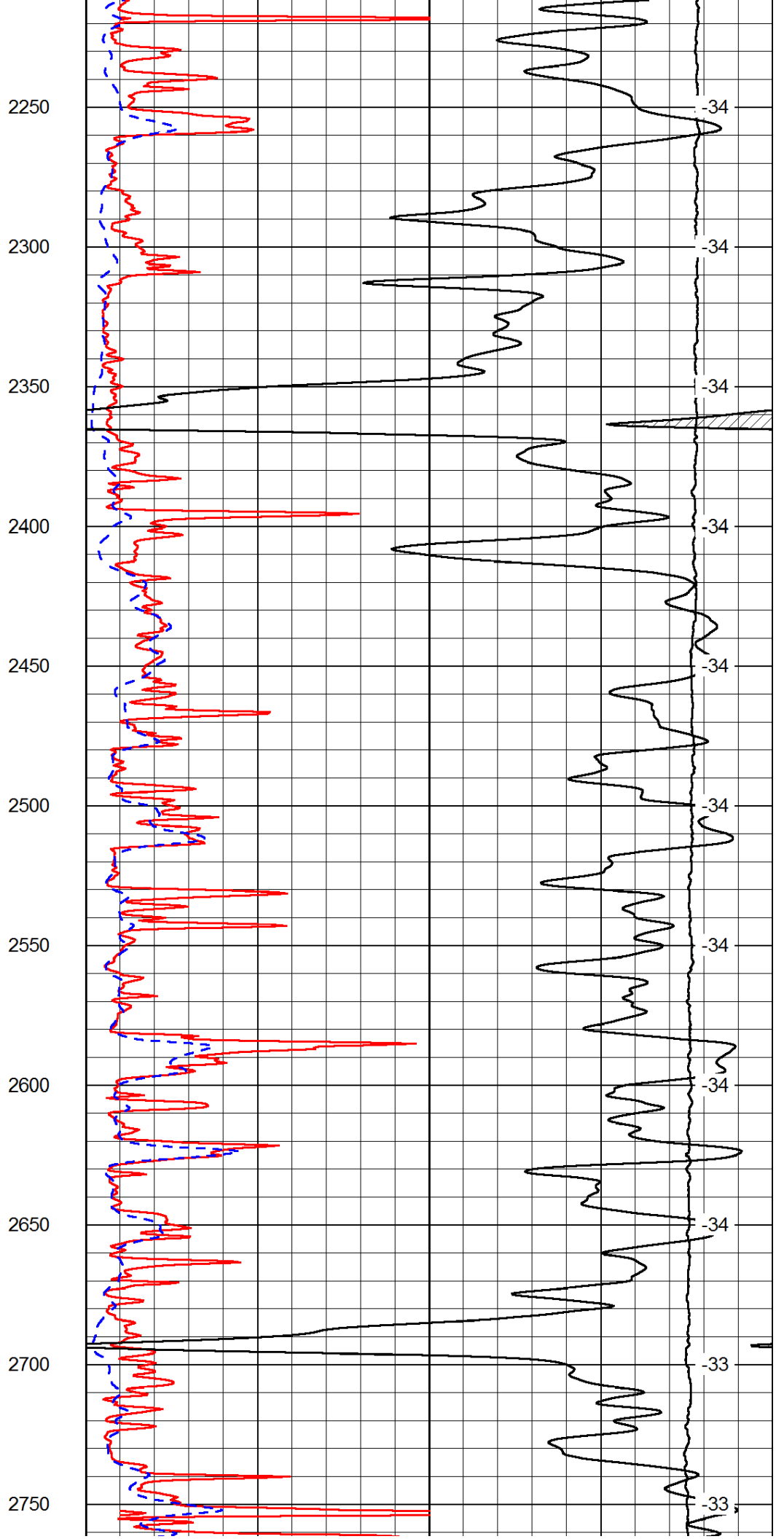
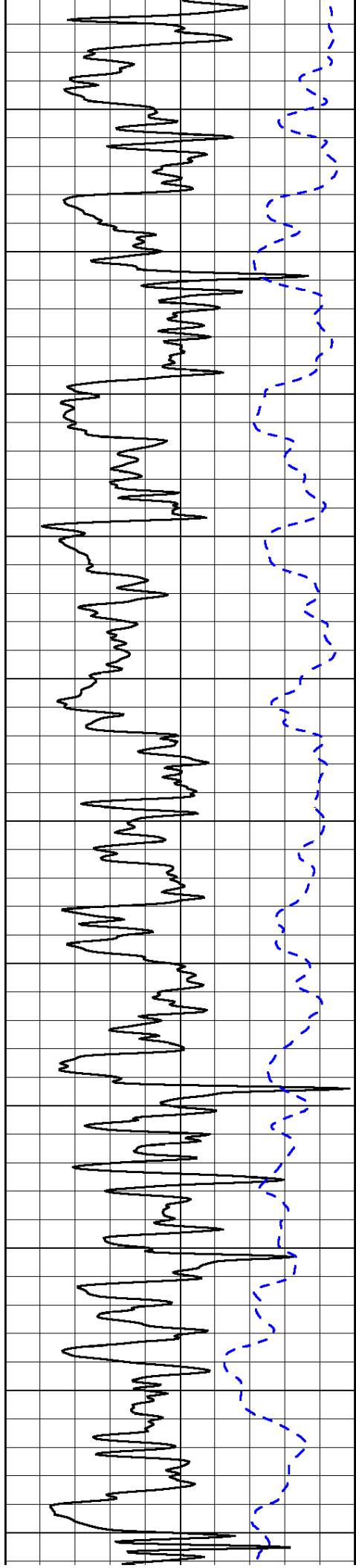
LSPD

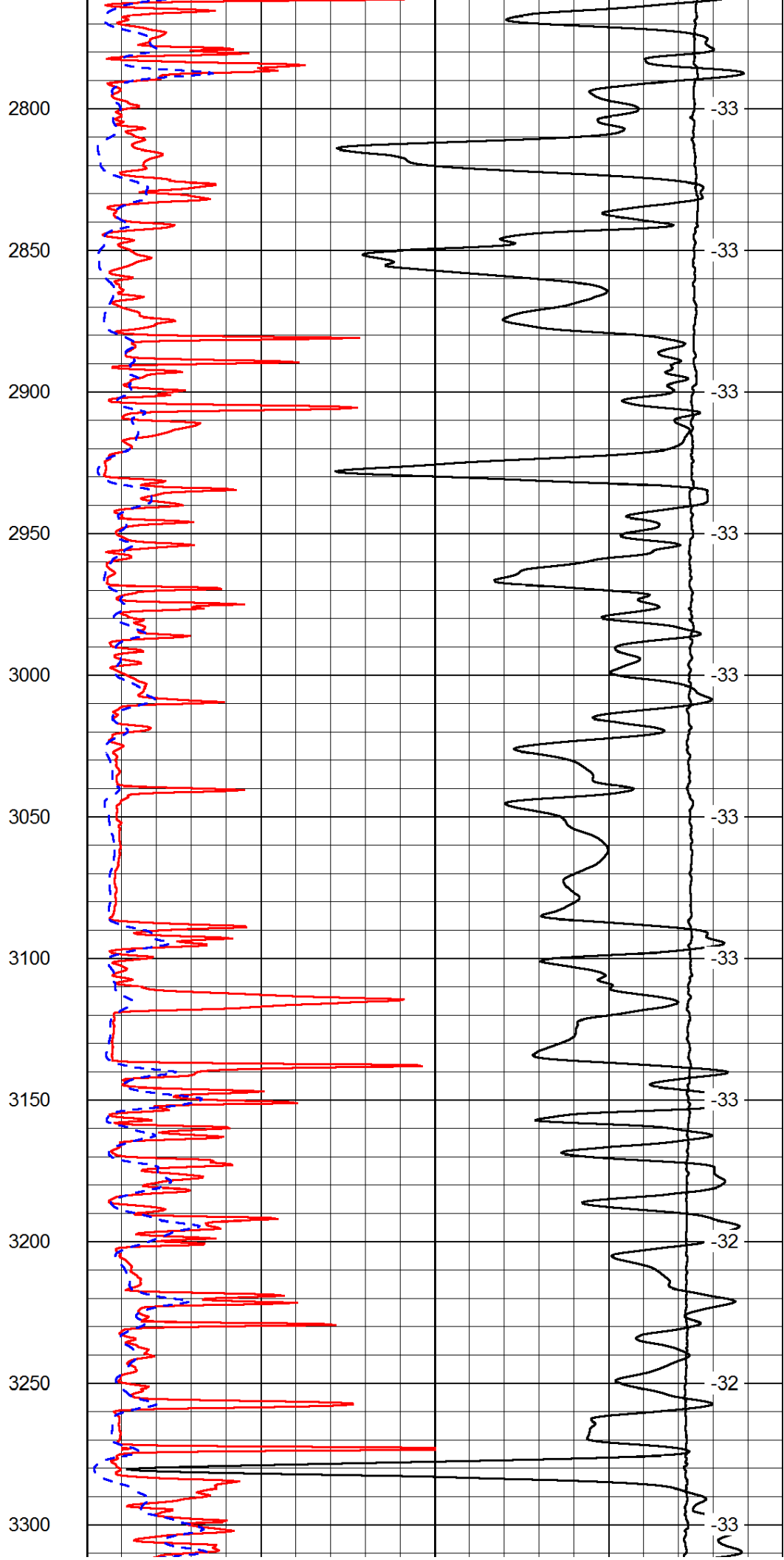
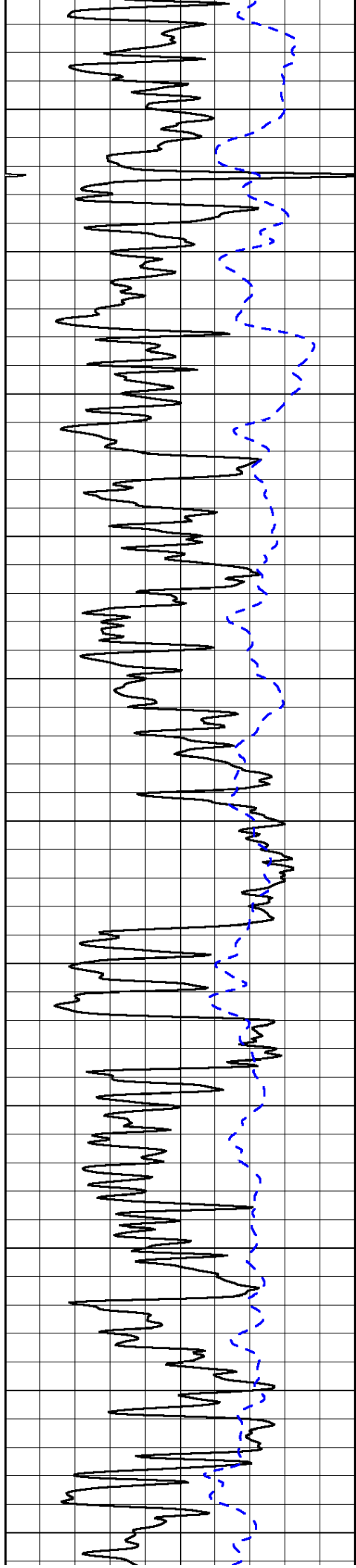
1000	Conductivity	0
15000	Line Tension	0

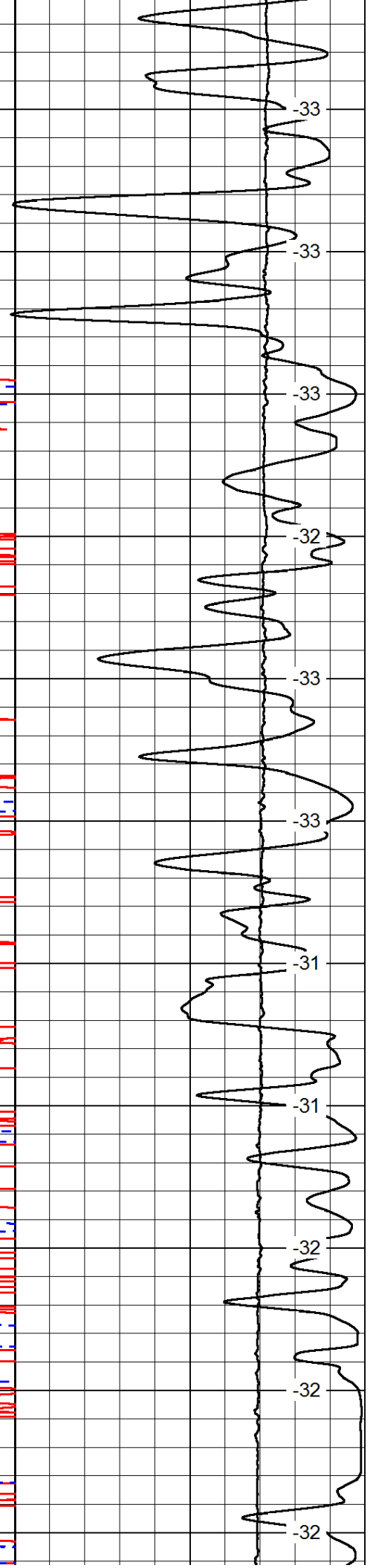
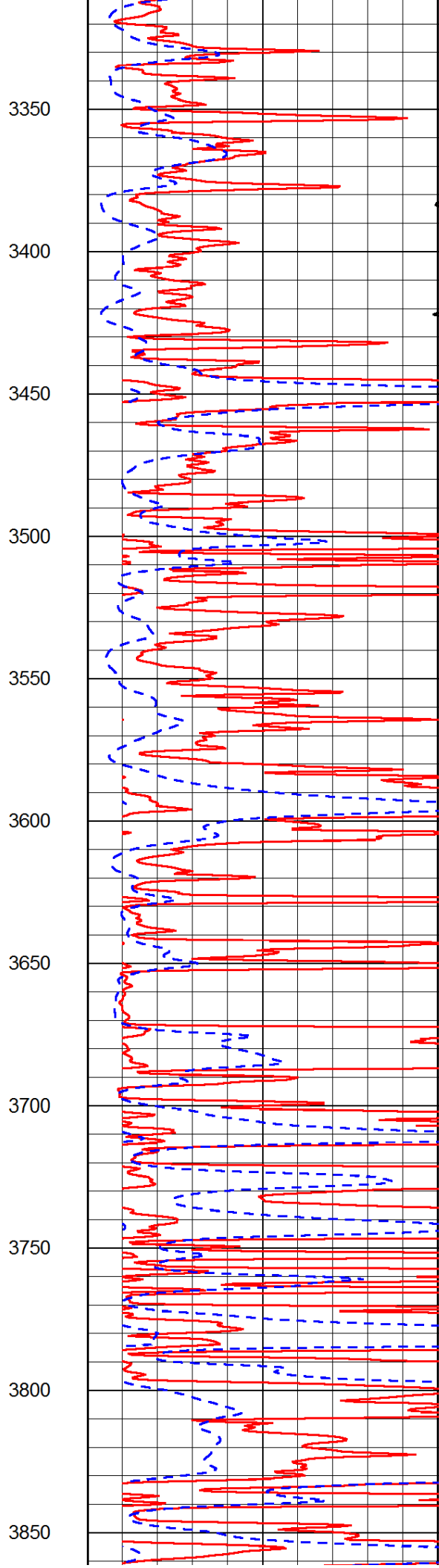
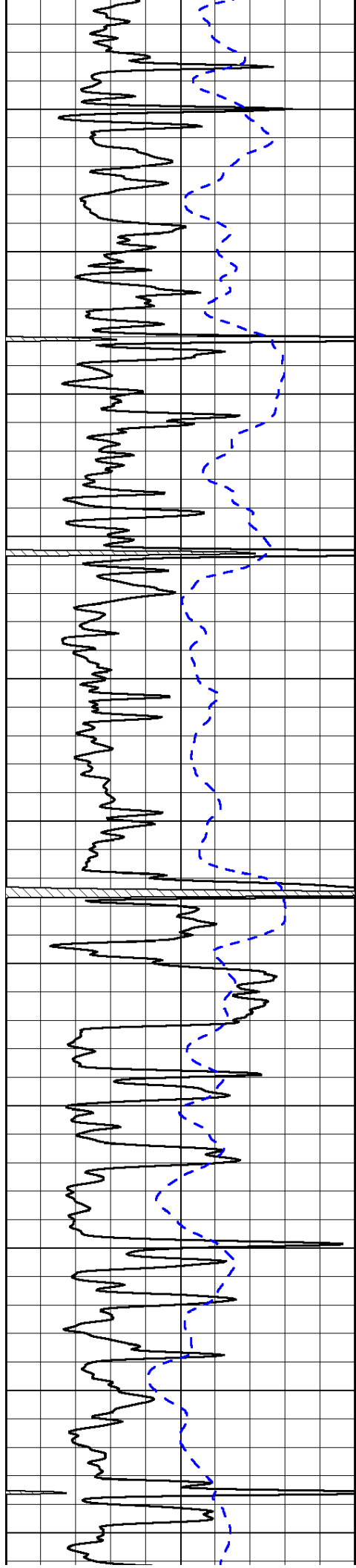
50	Shallow Resistivity	500
50	Deep Resistivity	500

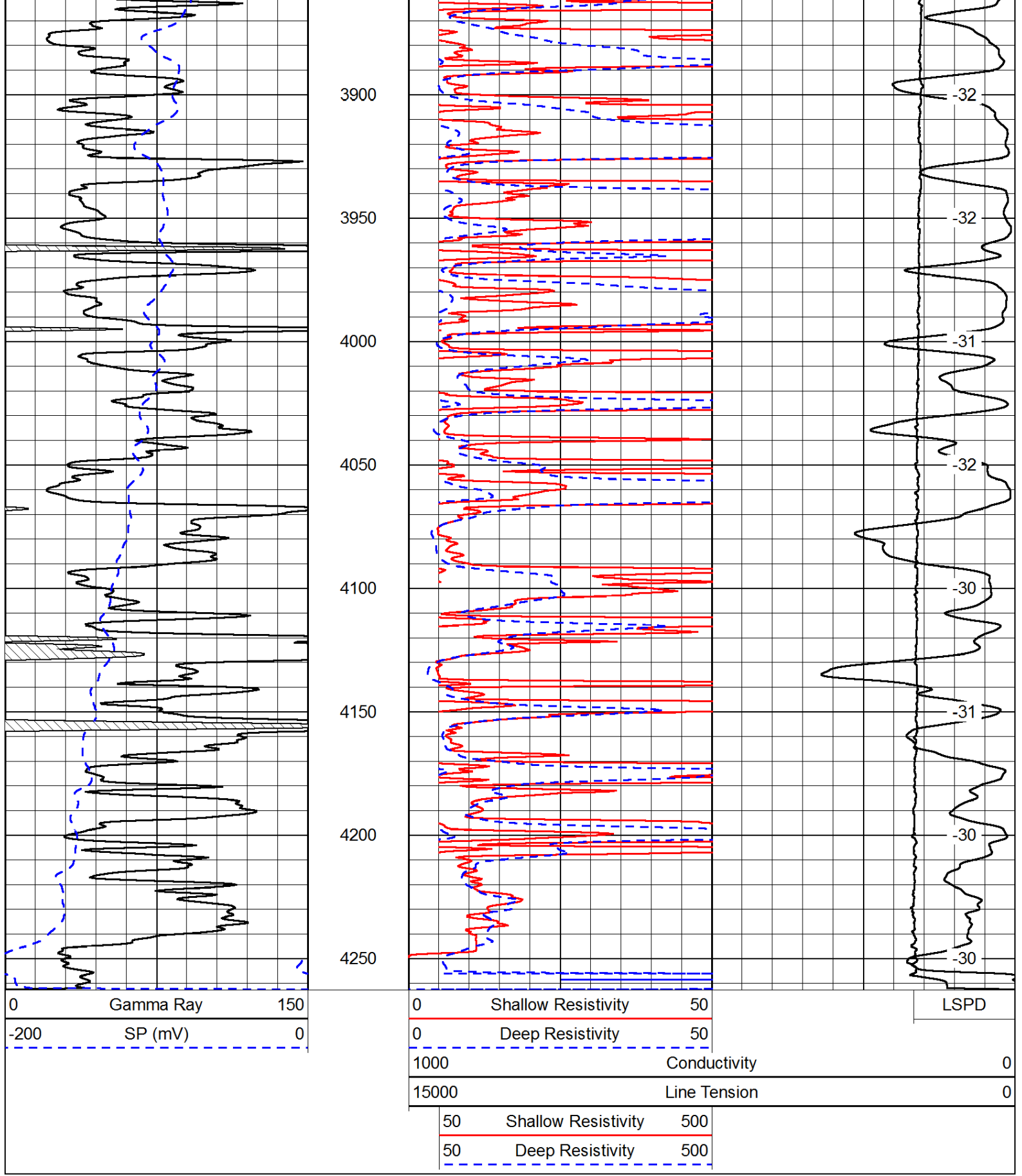




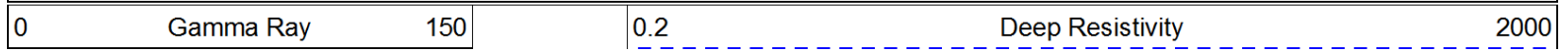








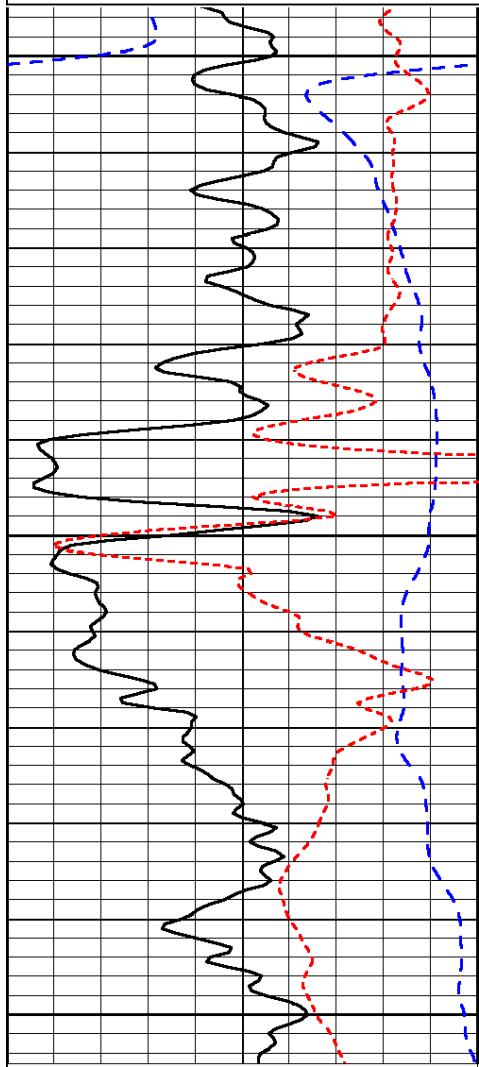
Database File: c:\warrior\data\carmen schmitt_tombaugh unit no.1\carmhd.db
 Dataset Pathname: dil/carmstk
 Presentation Format: dil
 Dataset Creation: Sat Sep 08 14:40:57 2012
 Charted by: Depth in Feet scaled 1:240



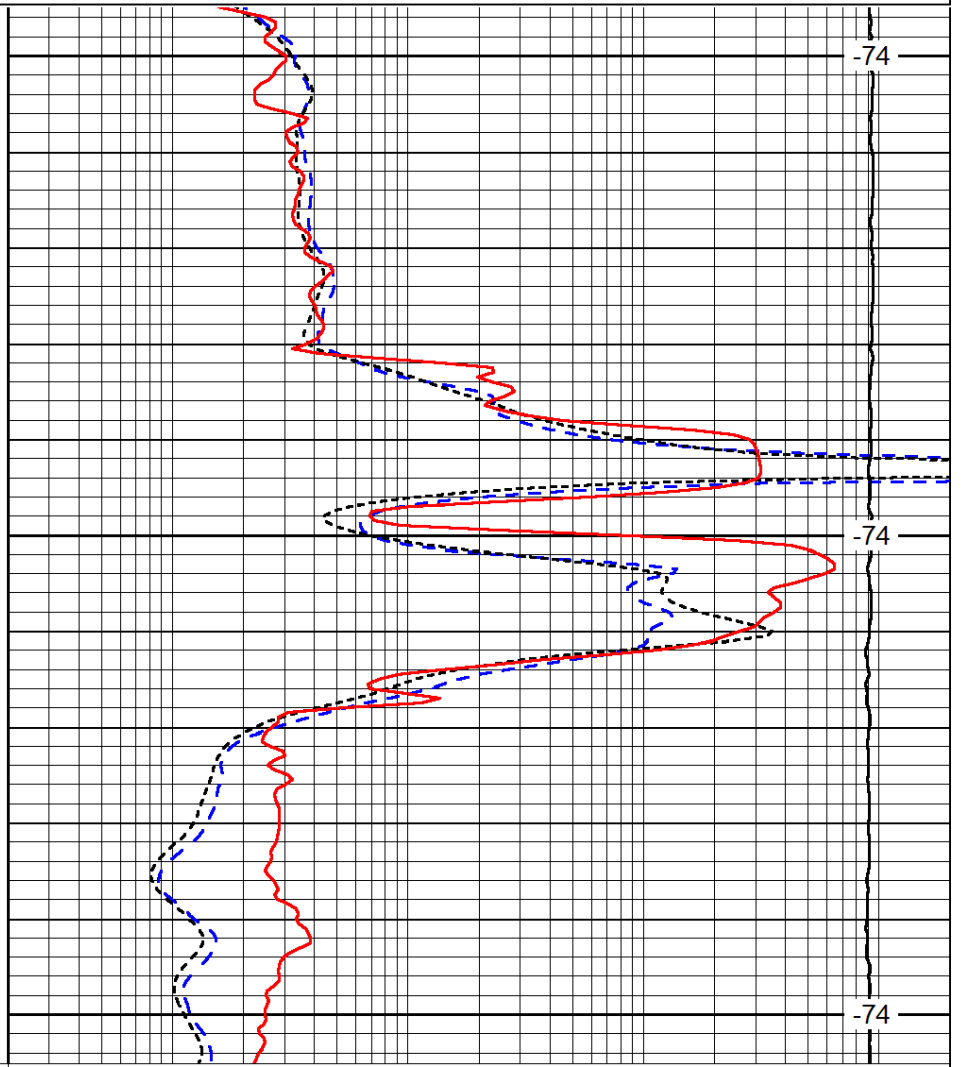
-200	SP (mV)	0
-160	RxoRt	40

0.2	Medium Resistivity	2000
0.2	Shallow Resistivity	2000
15000	Line Tension	0

LSPD



1250
1300
1350



-74
-74
-74

0	Gamma Ray	150
-200	SP (mV)	0
-160	RxoRt	40

0.2	Deep Resistivity	2000
0.2	Medium Resistivity	2000
0.2	Shallow Resistivity	2000
15000	Line Tension	0

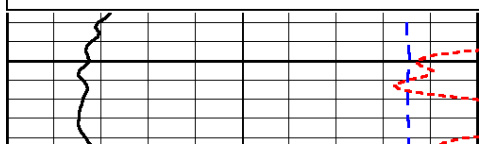
LSPD

Database File: c:\warrior\data\carmen schmitt_tombaugh unit no.1\carmhd.db
 Dataset Pathname: dil/carmstk
 Presentation Format: dil
 Dataset Creation: Sat Sep 08 14:40:57 2012
 Charted by: Depth in Feet scaled 1:240

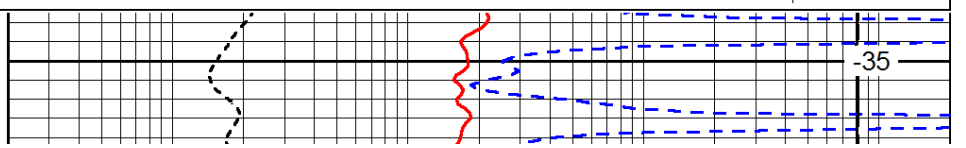
0	Gamma Ray	150
-200	SP (mV)	0
-160	RxoRt	40

0.2	Deep Resistivity	2000
0.2	Medium Resistivity	2000
0.2	Shallow Resistivity	2000
15000	Line Tension	0

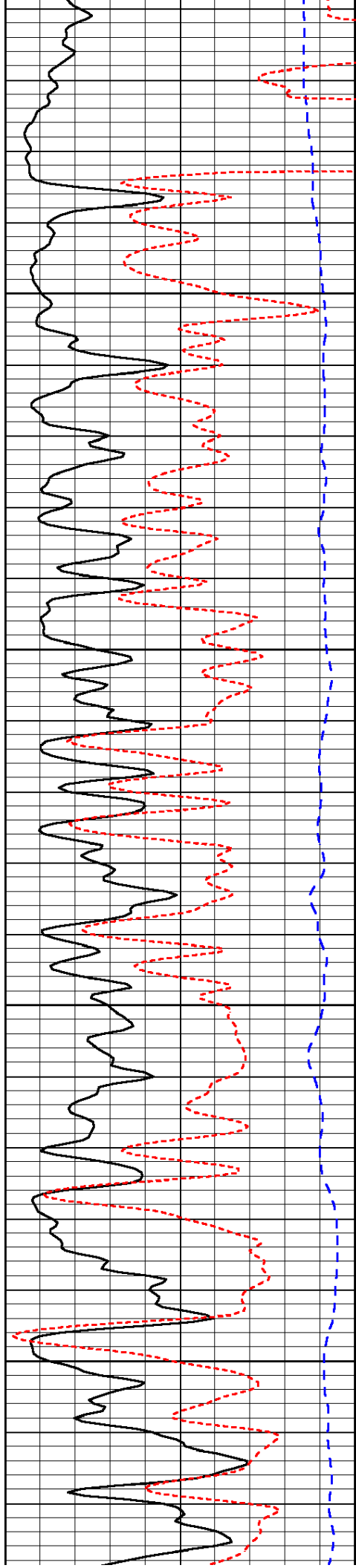
LSPD



2000



-35

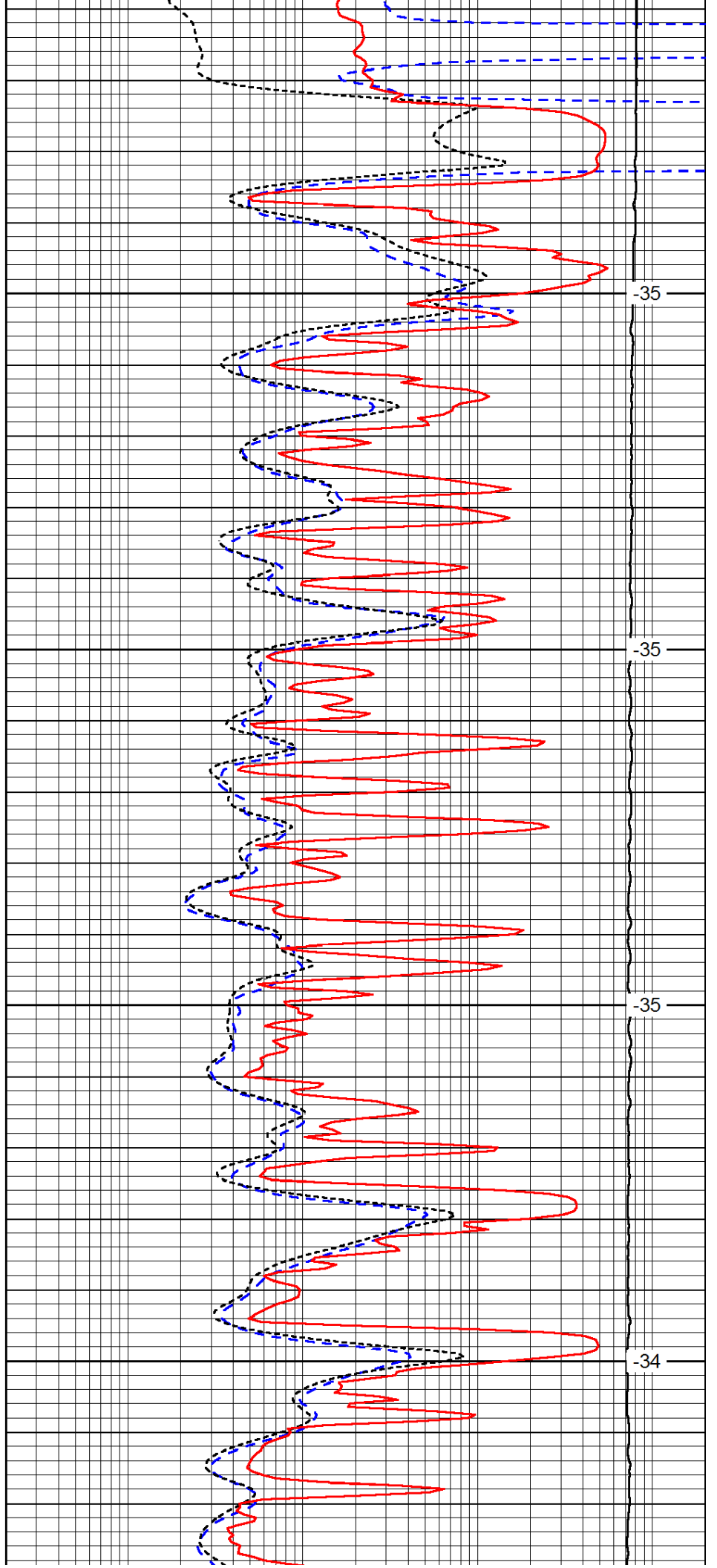


2050

2100

2150

2200

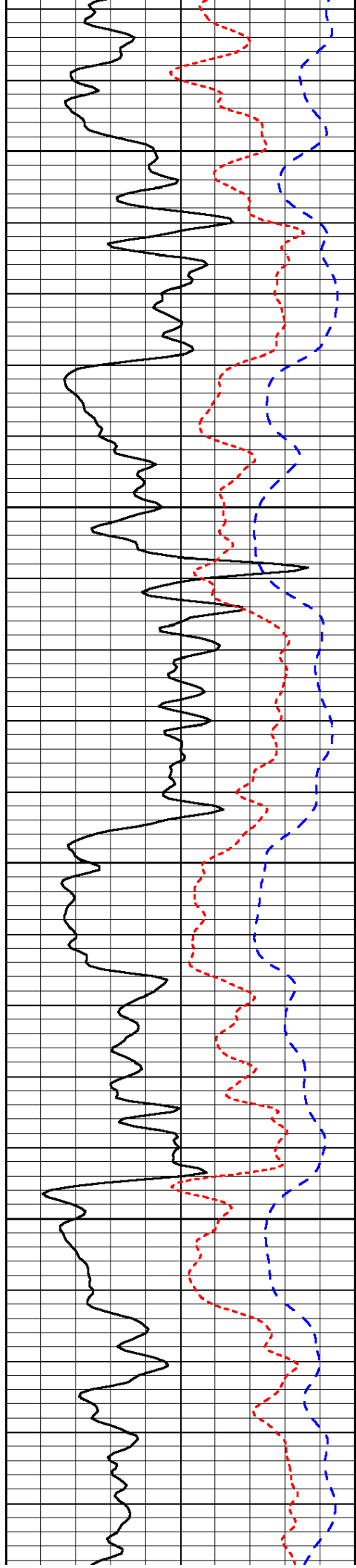


-35

-35

-35

-34

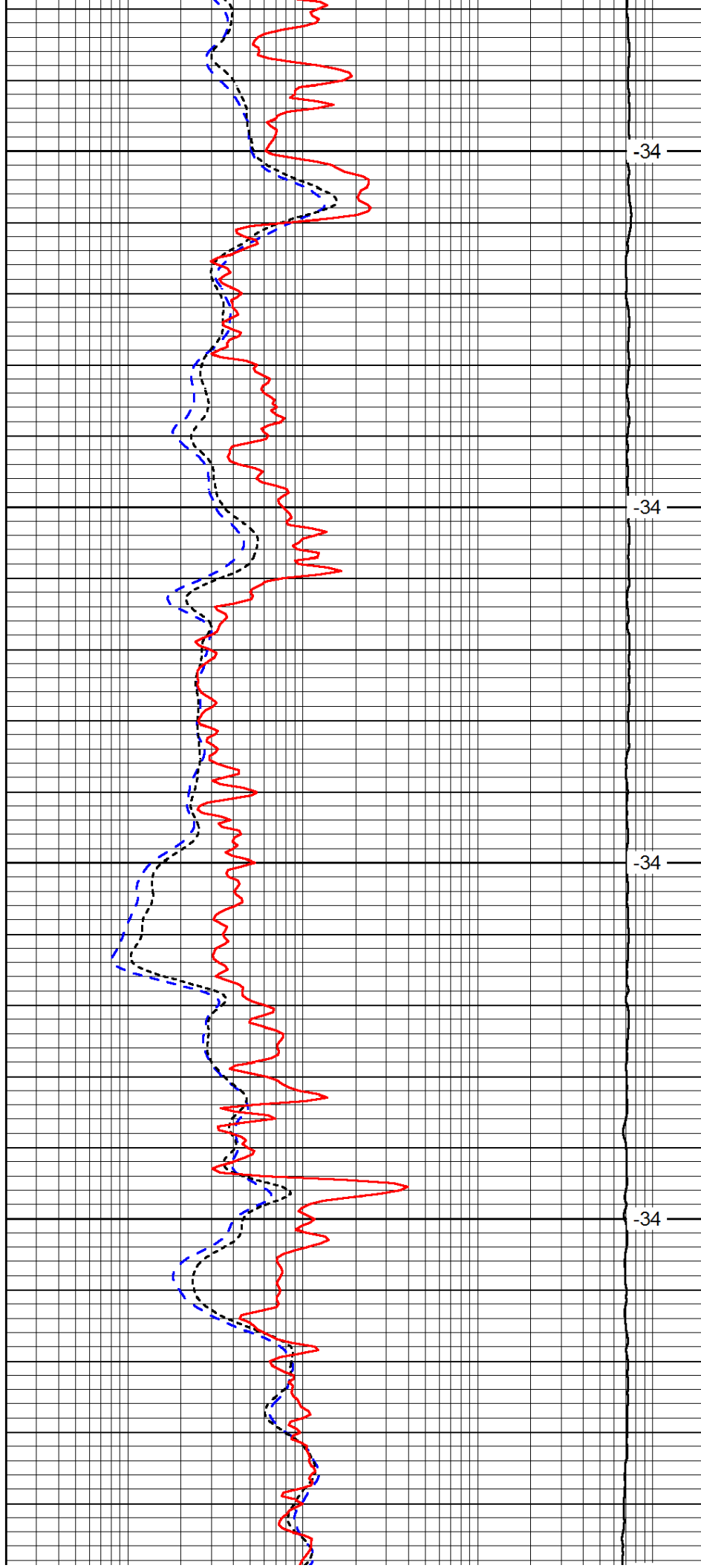


2250

2300

2350

2400

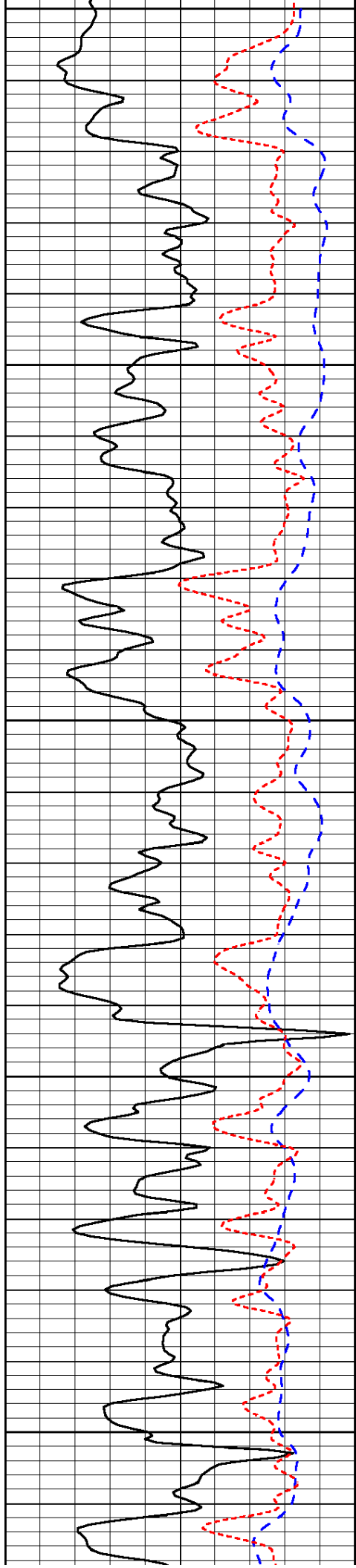


-34

-34

-34

-34



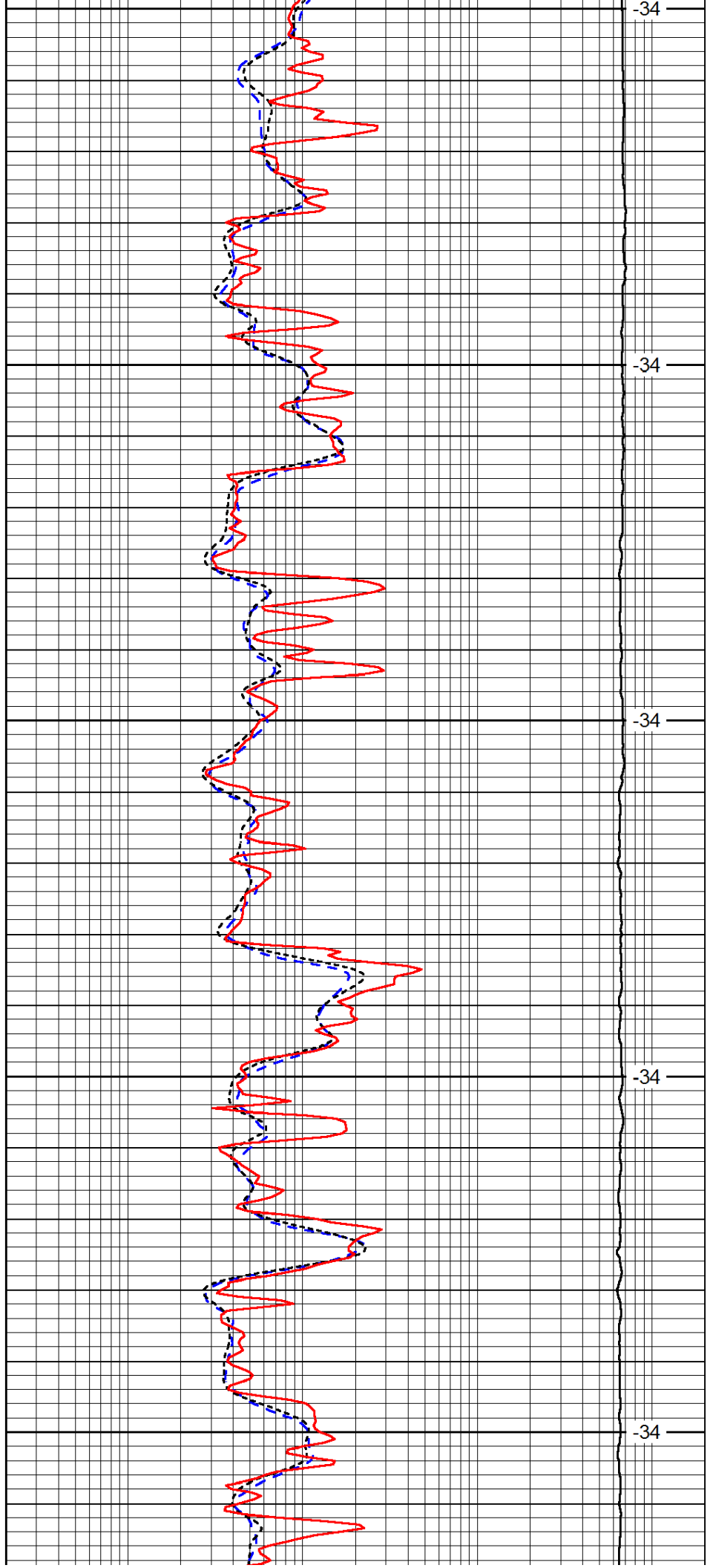
2450

2500

2550

2600

2650



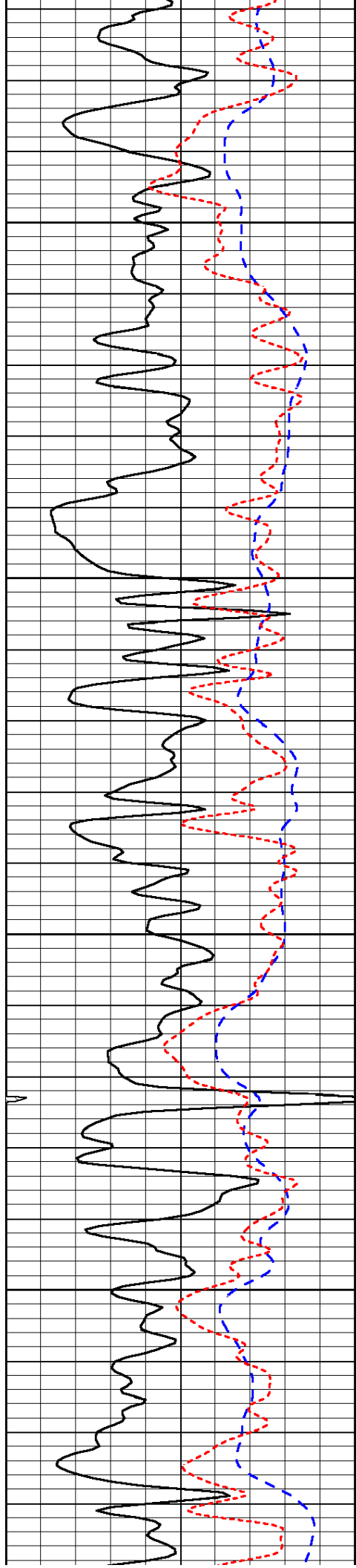
-34

-34

-34

-34

-34

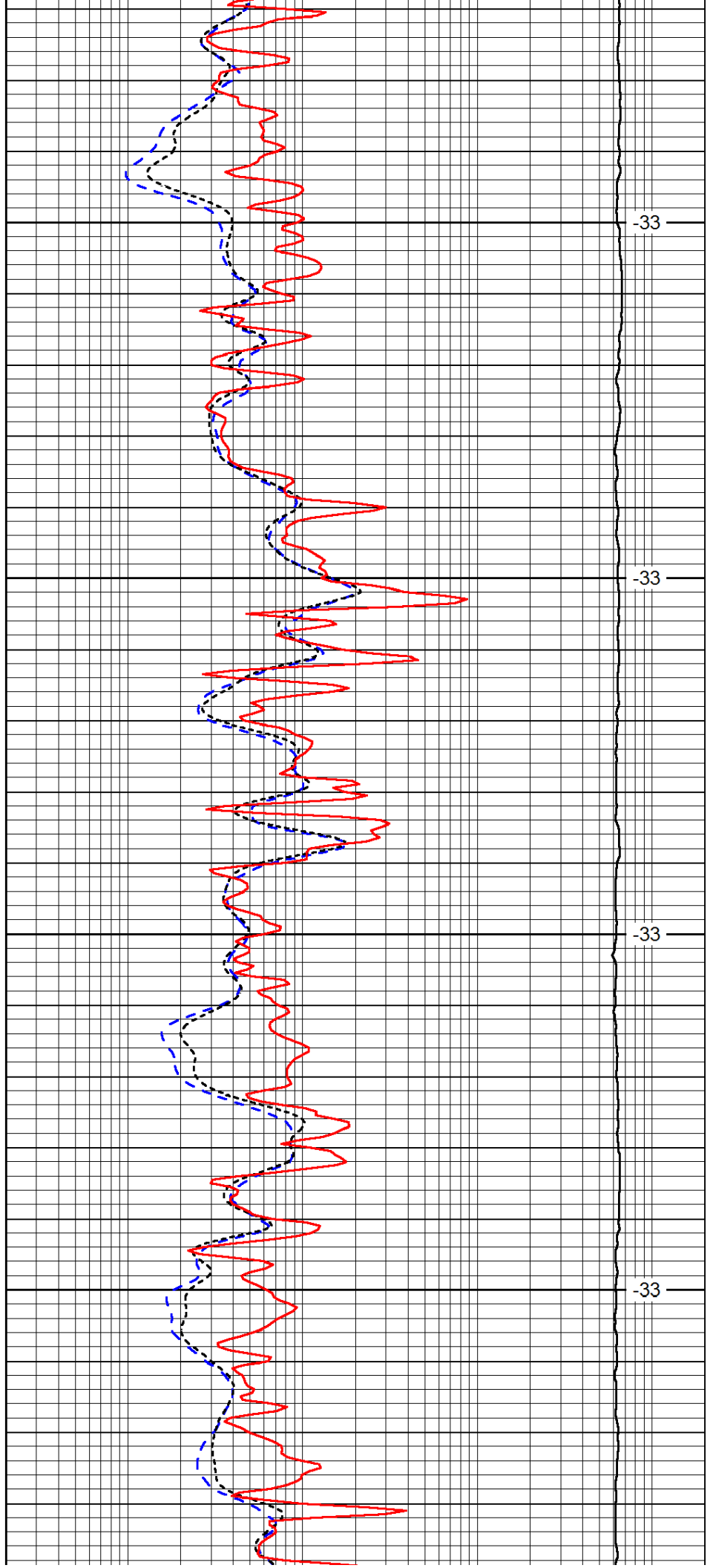


2700

2750

2800

2850

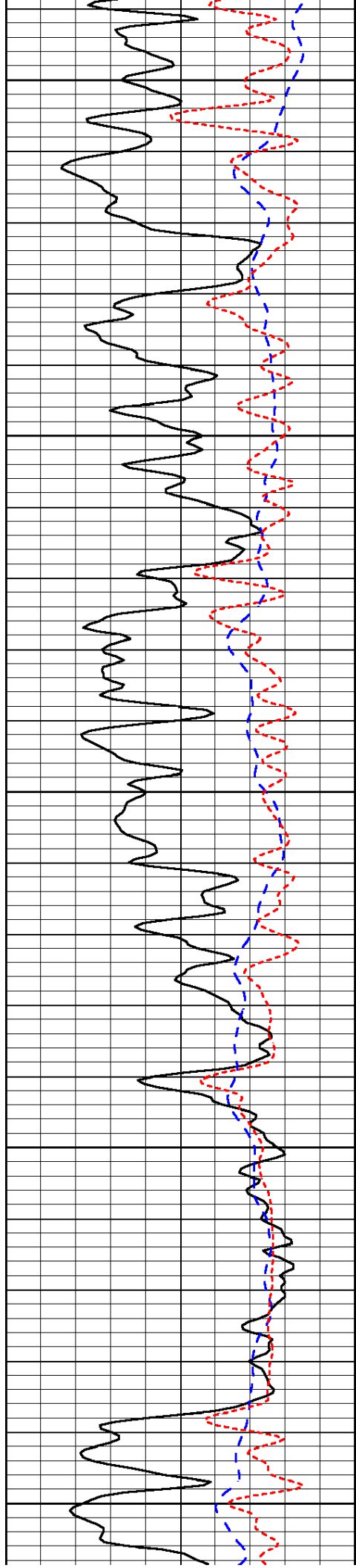


-33

-33

-33

-33



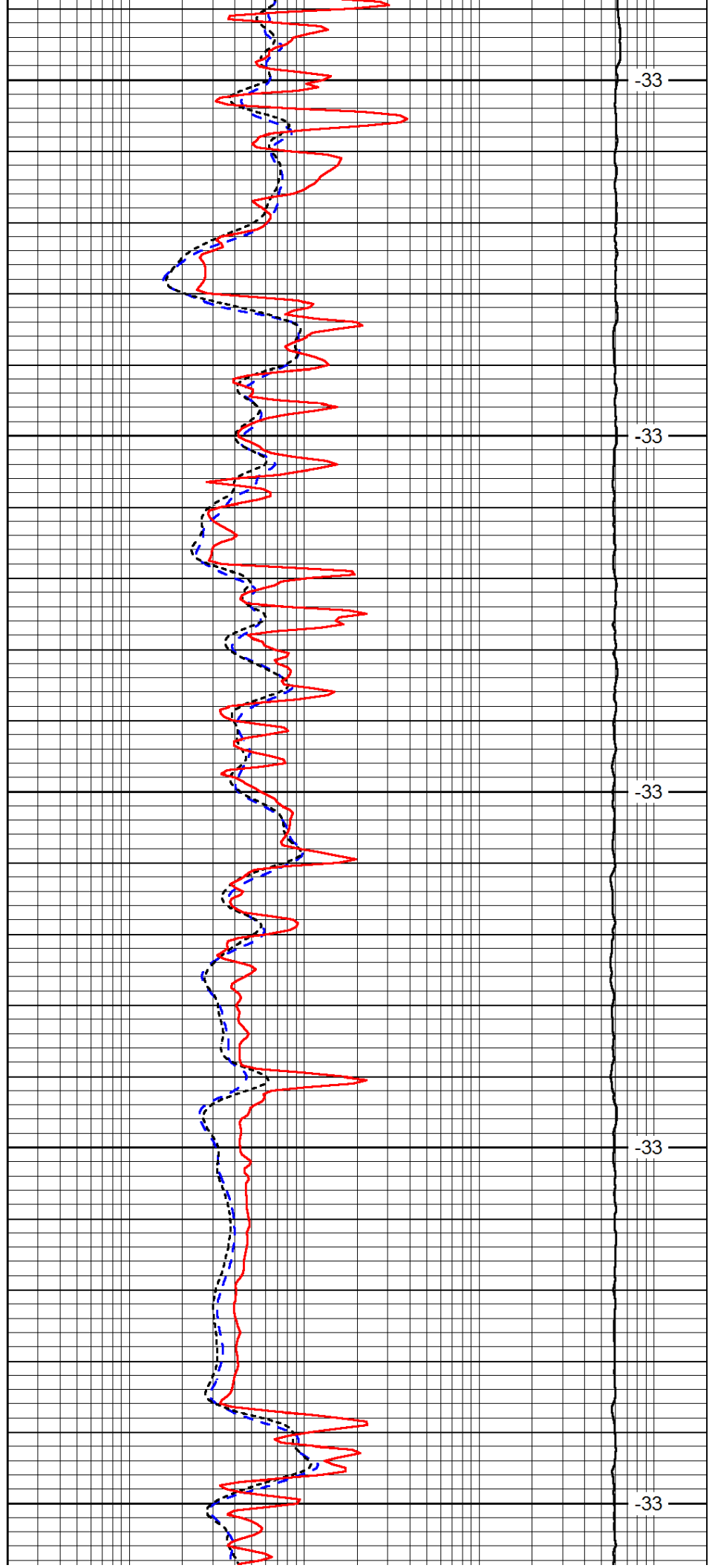
2900

2950

3000

3050

3100



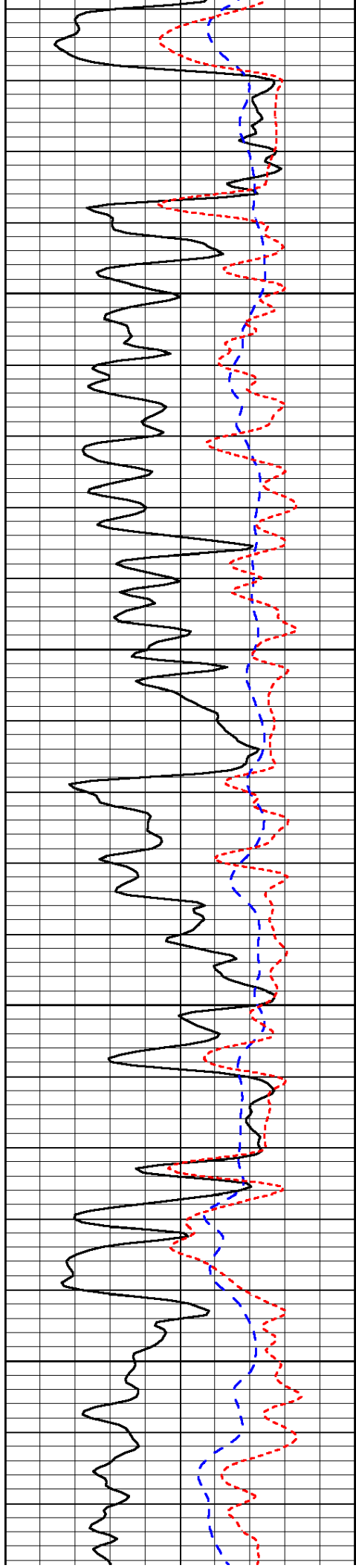
-33

-33

-33

-33

-33

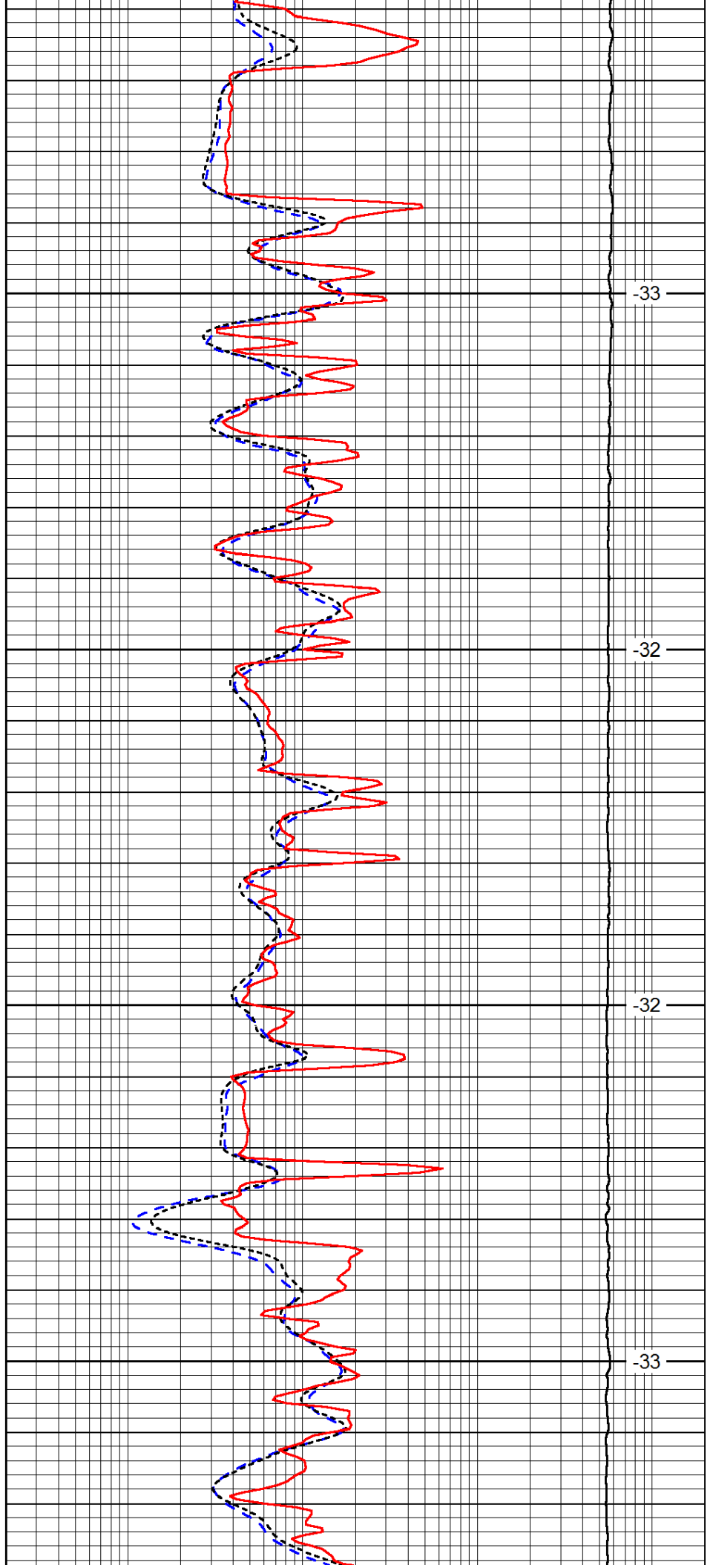


3150

3200

3250

3300

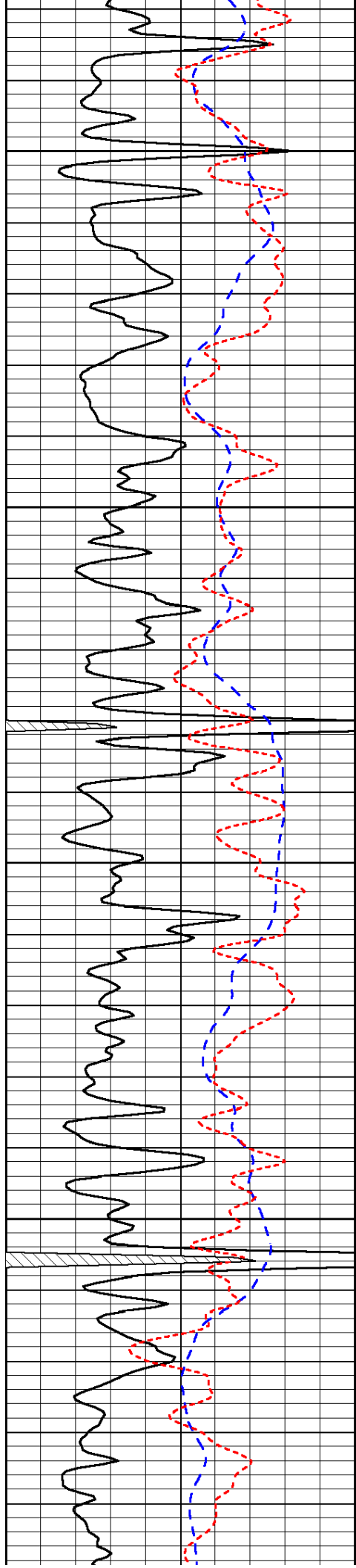


-33

-32

-32

-33

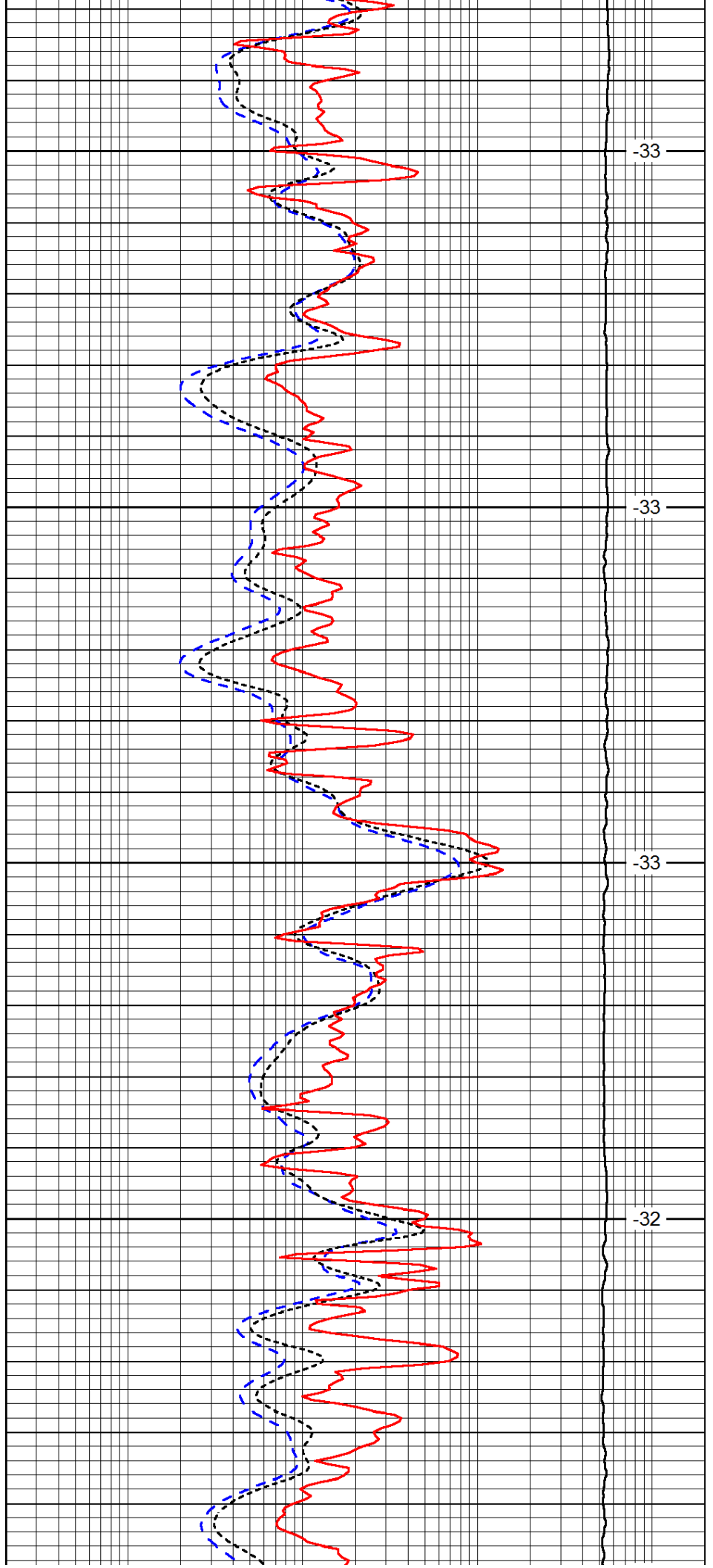


3350

3400

3450

3500

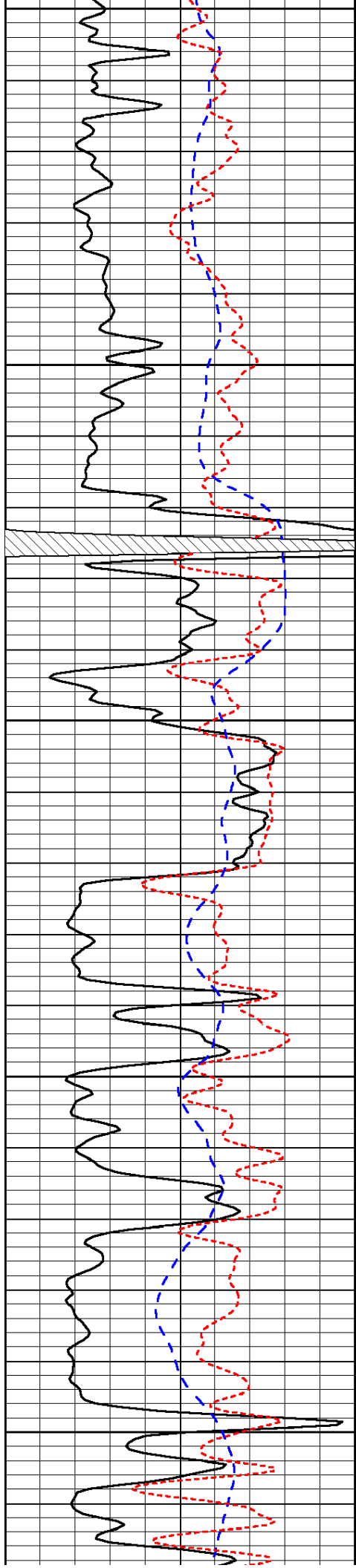


-33

-33

-33

-32



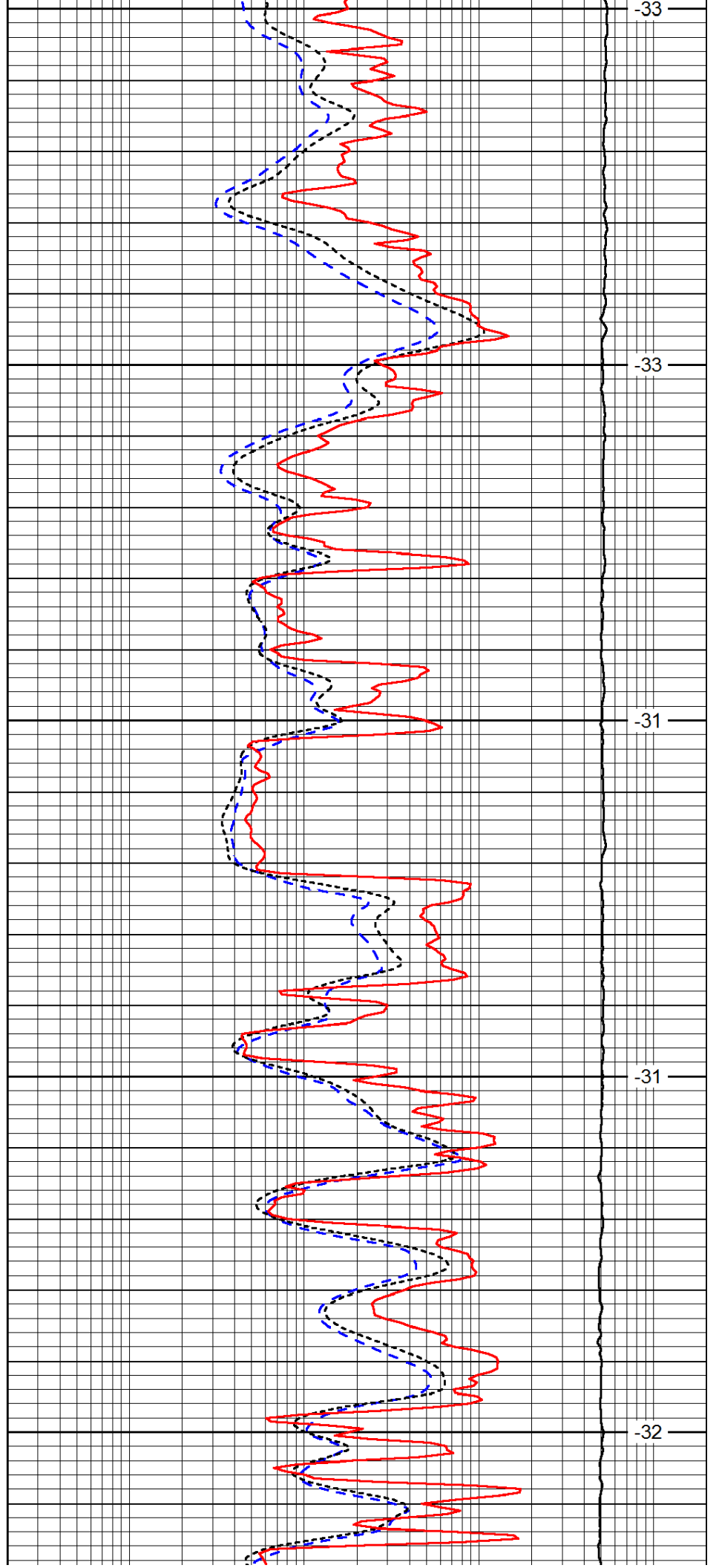
3550

3600

3650

3700

3750



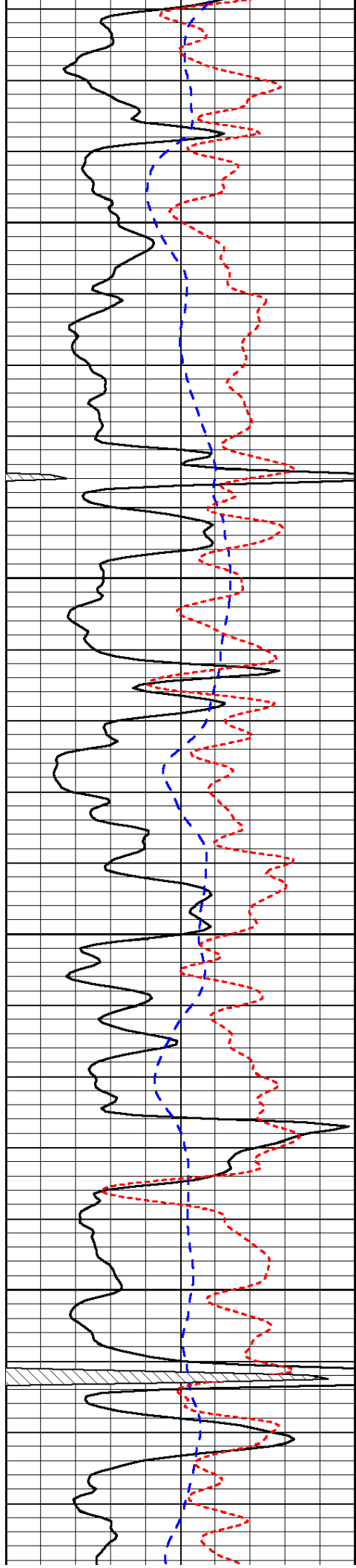
-33

-33

-31

-31

-32

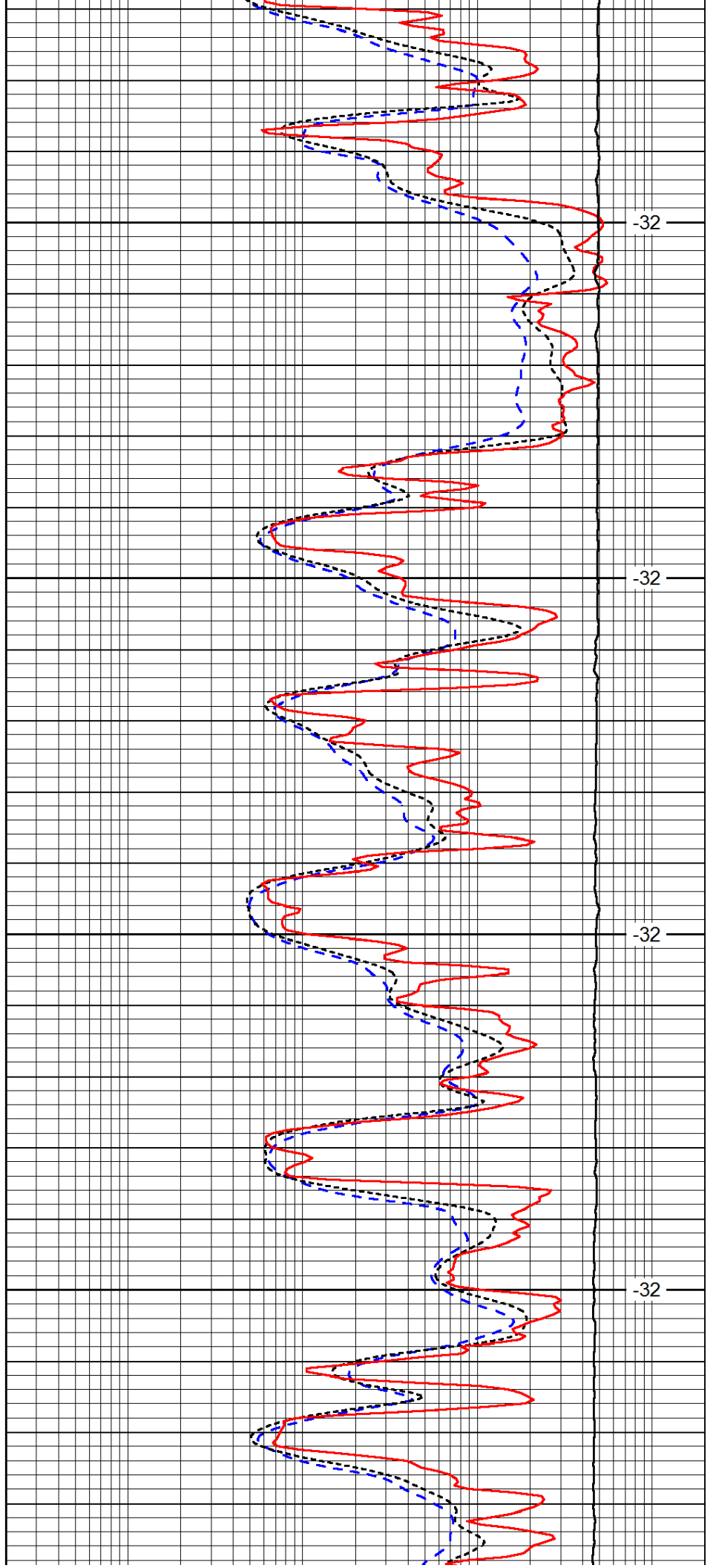


3800

3850

3900

3950

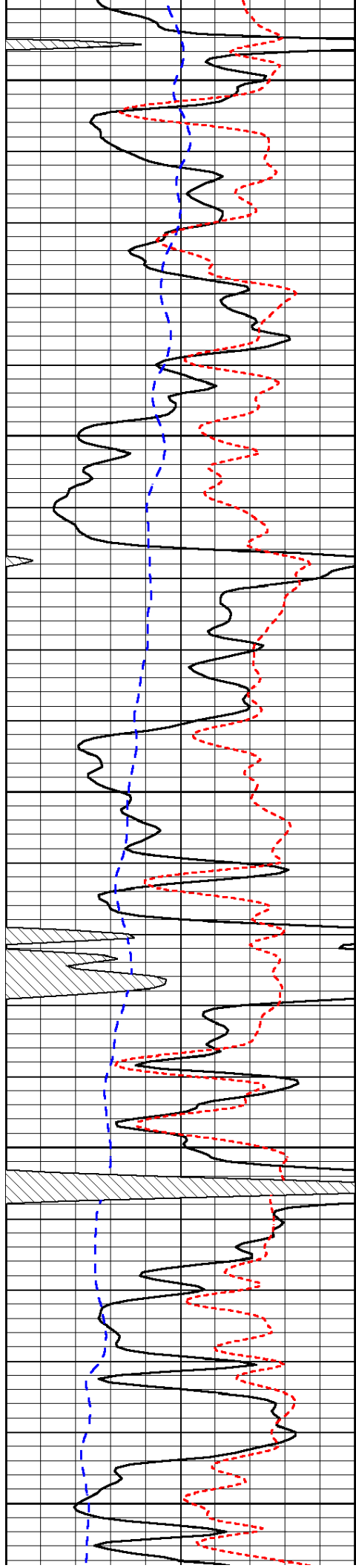


-32

-32

-32

-32



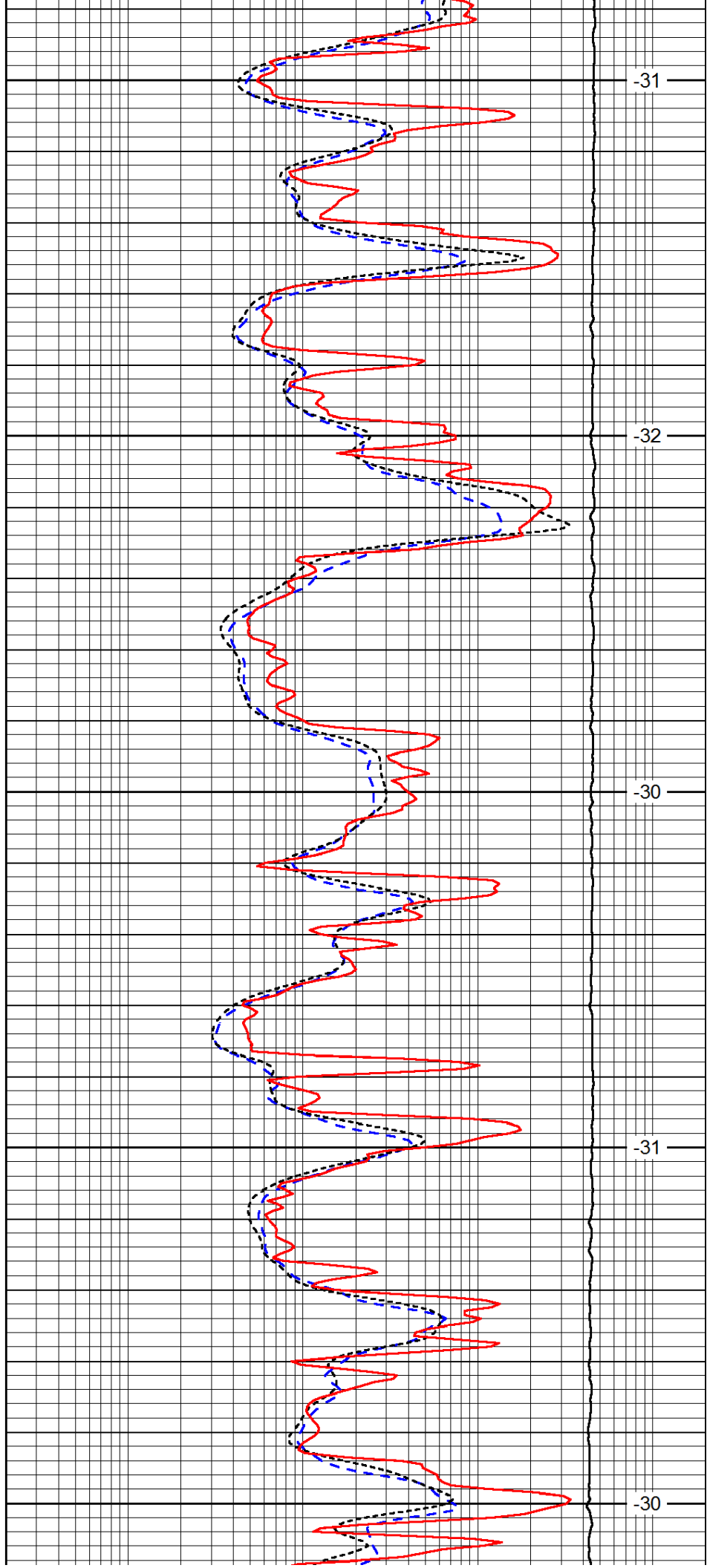
4000

4050

4100

4150

4200



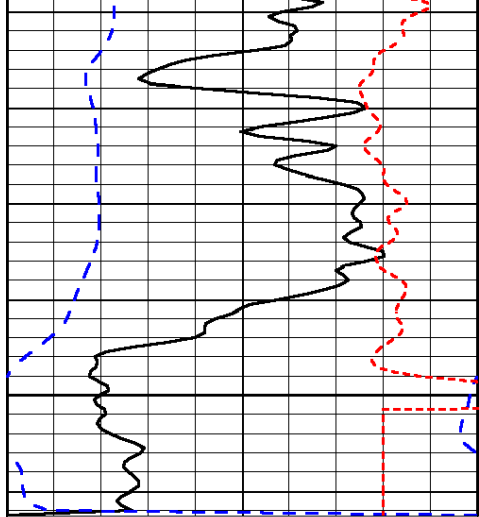
-31

-32

-30

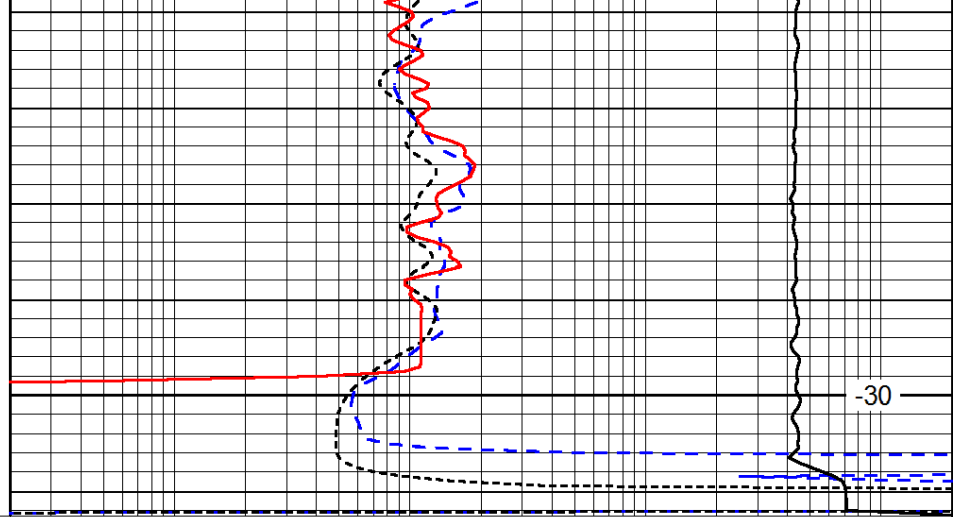
-31

-30



0	Gamma Ray	150
-200	SP (mV)	0
-160	RxoRt	40

4250



0.2	Deep Resistivity	2000
0.2	Medium Resistivity	2000
0.2	Shallow Resistivity	2000
15000	Line Tension	0

LSPD