



SUPERIOR
Hays,
Kansas

DUAL
INDUCTION
LOG

Company		RITCHIE EXPLORATION, INC.	
Well		SMITH-REBEIN UNIT #1	
Field		WILDCAT	
County		FORD	
State		KANSAS	
Location:		API # : 15-057-20809-0000 2010' FSL & 2620' FEL N/2 - S/2	
Permanent Datum		GROUND LEVEL Elevation 2377	
Log Measured From		KELLY BUSHING 11' A.G.L.	
Drilling Measured From		KELLY BUSHING	
SEC 3		TWP 25S RGE 24W	
Other Services		CDL/CNL	
Elevation		K.B. 2388 D.F. 2386 G.L. 2377	
Date	6/6/12		
Run Number	ONE		
Depth Driller	5460		
Depth Logger	5463		
Bottom Logged Interval	5461		
Top Log Interval	0		
Casing Driller	8 5/8" @ 350		
Casing Logger	349		
Bit Size	7 7/8		
Type Fluid in Hole	CHEMICAL MUD		
Density / Viscosity	9.2/61		
pH / Fluid Loss	10.0/7.6		
Source of Sample	FLOWLINE		
Rin @ Meas. Temp	0.80 @ 95F		
Rmf @ Meas. Temp	0.60 @ 95F		
Rmc @ Meas. Temp	0.96 @ 95F		
Source of Rmf / Rmc	MEASURED		
Rin @ BHT	0.59 @ 129F		
Time Circulation Stopped	2 HOURS		
Time Logger on Bottom			
Maximum Recorded Temperature	129F		
Equipment Number	680		
Location	HAYS, KS.		
Recorded By	JEFF GRONEMEG		
Witnessed By	TERRY MCLEOD		

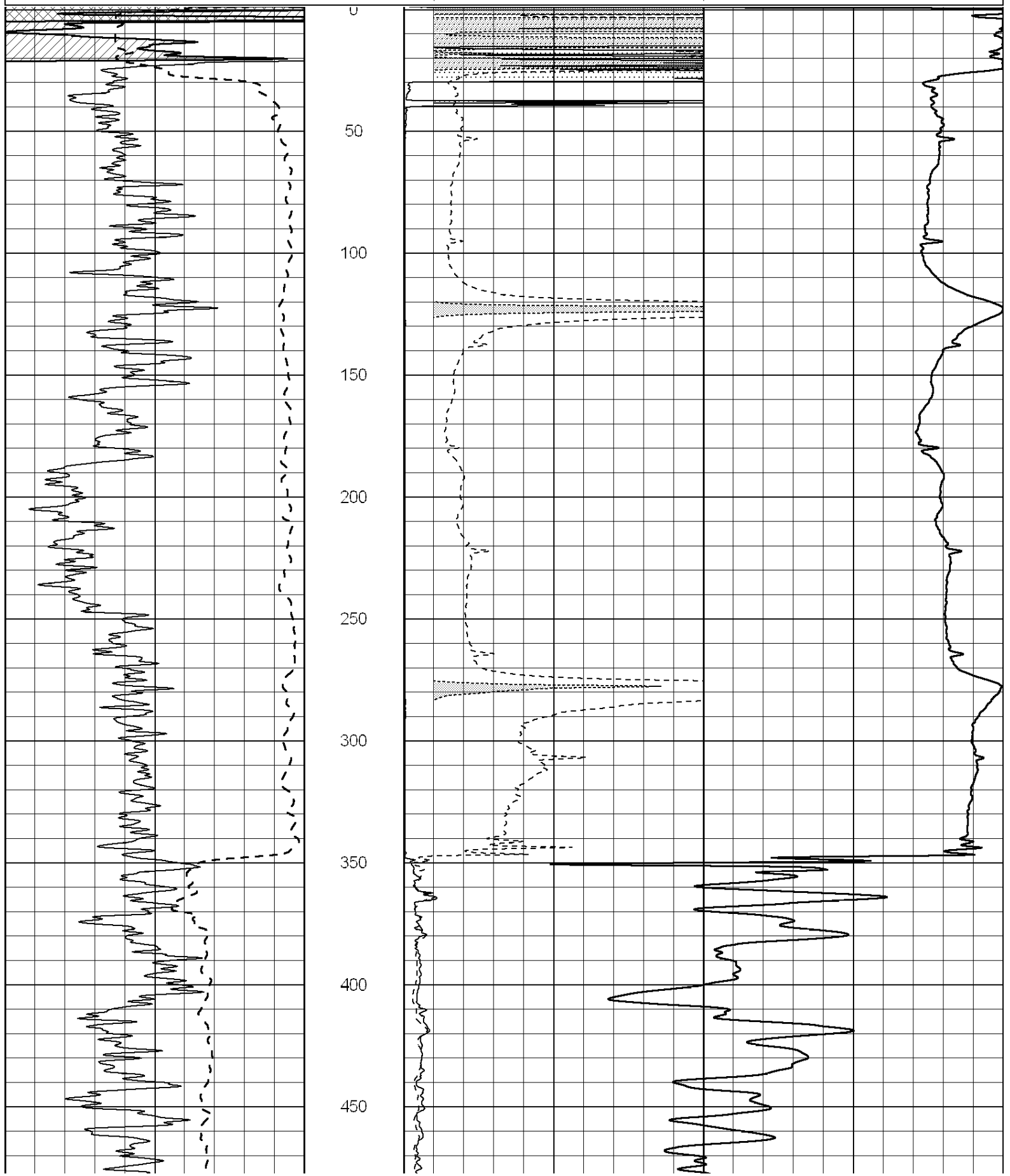
<<< Fold Here >>>

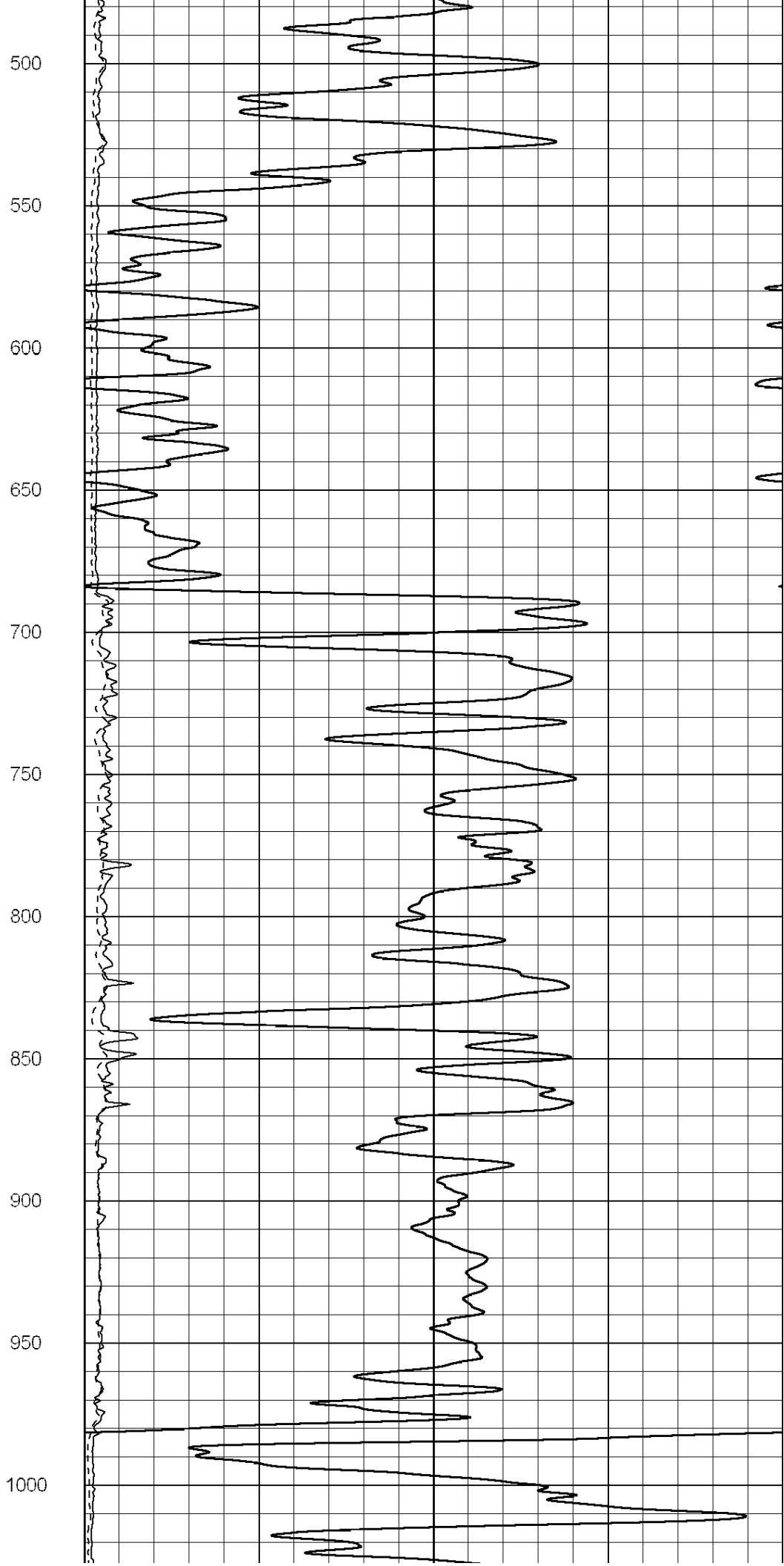
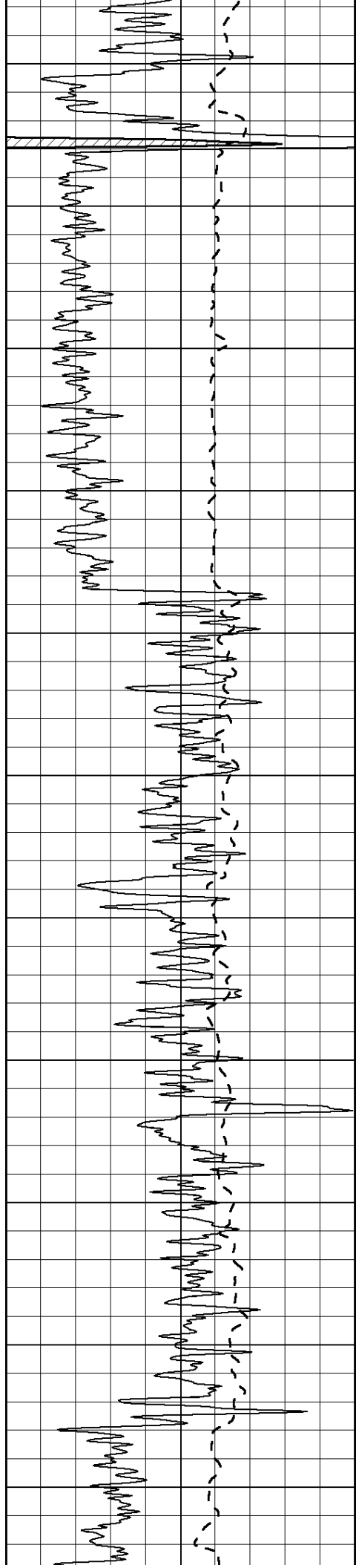
All interpretations are opinions based on inferences from electrical or other measurements and we cannot and do not guarantee the accuracy or correctness of any interpretation, and we shall not, except in the case of gross or willful negligence on our part, be liable or responsible for any loss, costs, damages, or expenses incurred or sustained by anyone resulting from any interpretation made by any of our officers, agents or employees. These interpretations are also subject to our general terms and conditions set out in our current Price Schedule.

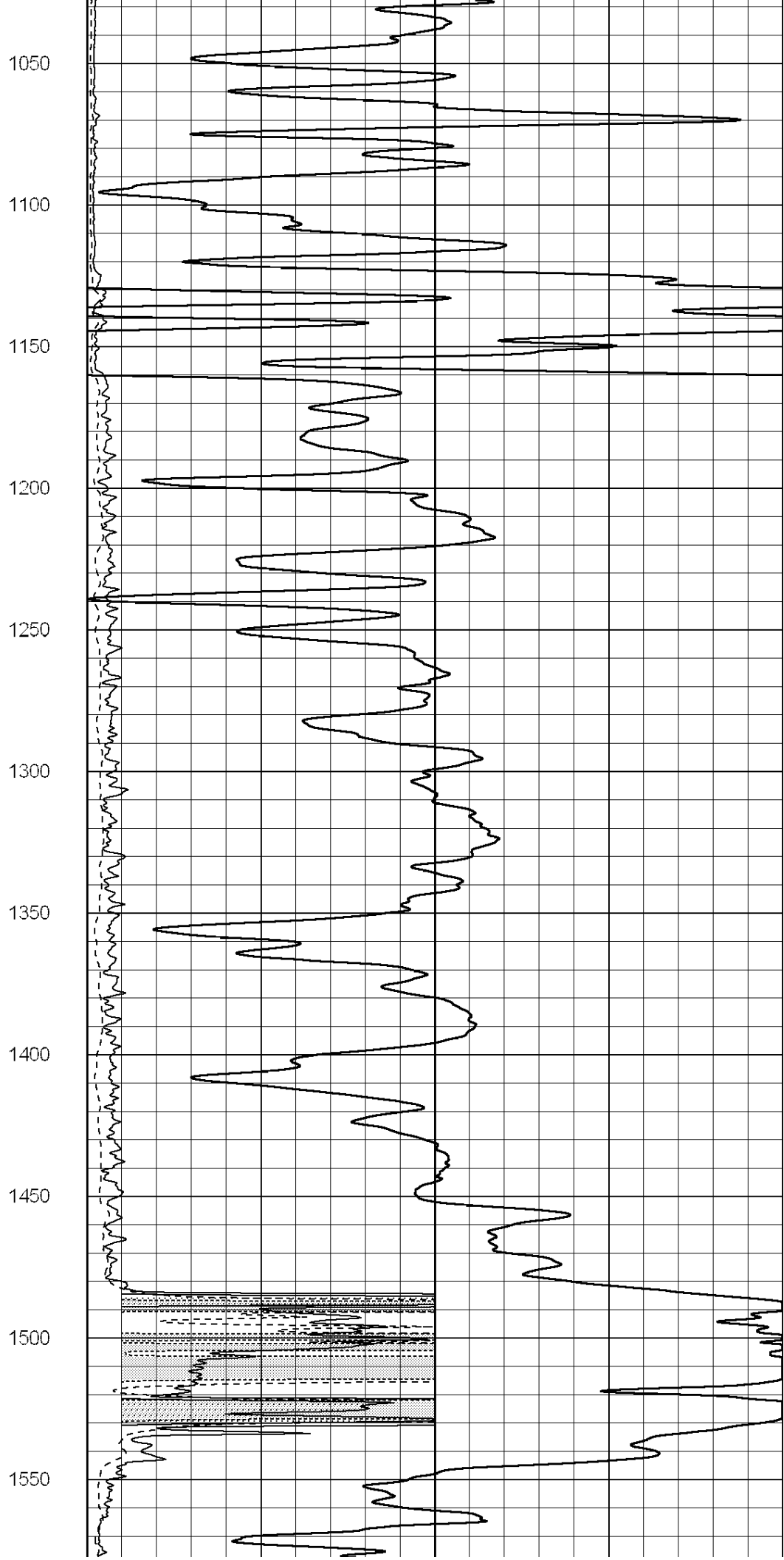
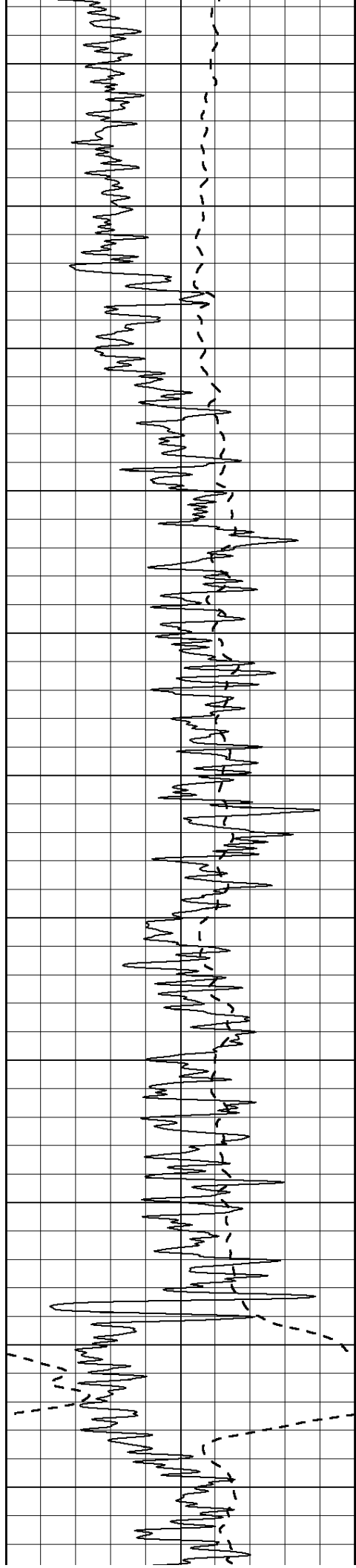
Comments

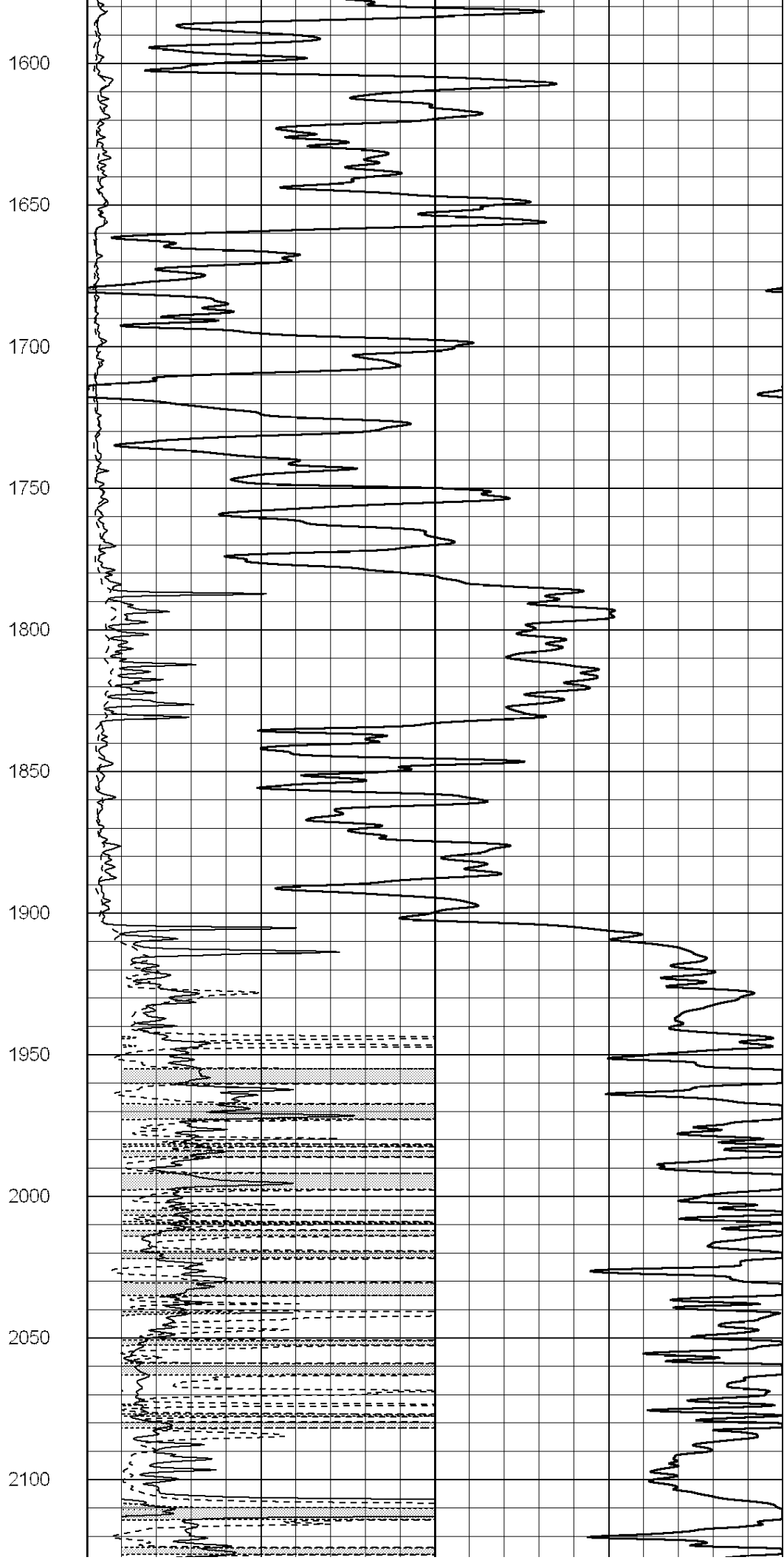
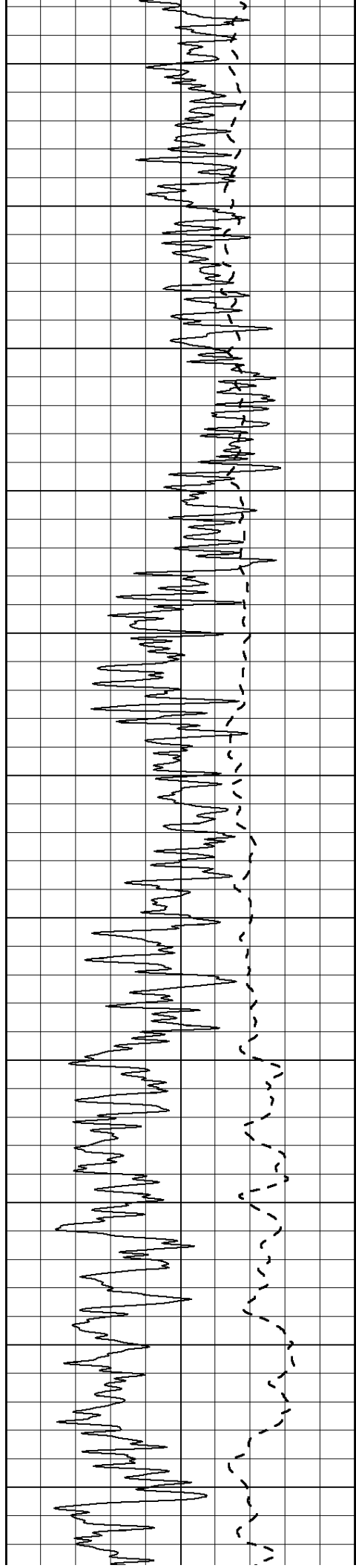
THANK YOU FOR USING SUPERIOR WELL SERVICE (785) 628-6395
DIRECTIONS
JETMORE, KS - SOUTH TO COUNTY LINE - 1 MILE SOUTH TO DUCK CREEK RD
3 MILES WEST TO CURVE SOUTH - NORTH AND EAST INTO

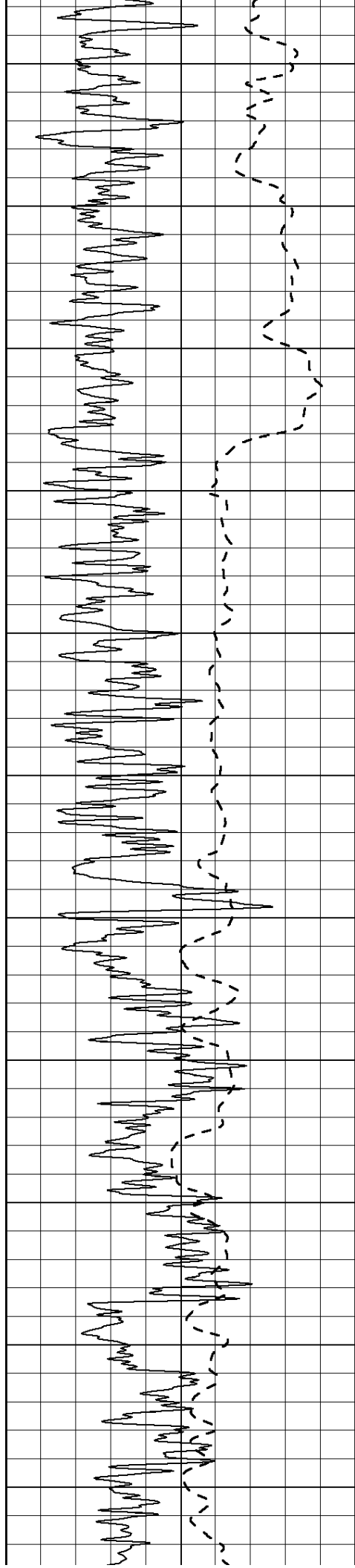
Charted by: Depth (m) Est scaled (m)					
0	Gamma Ray (GAPI)	150	0	RLL3 (Ohm-m)	50
-100	SP (mV)	100	0	Deep Induction (Ohm-m)	50
-----			-----		
			1000	CILD (mmho/m)	0
			50	RILD X10 (Ohm-m)	500
			50	RLL3 X10 (Ohm-m)	500











2150

2200

2250

2300

2350

2400

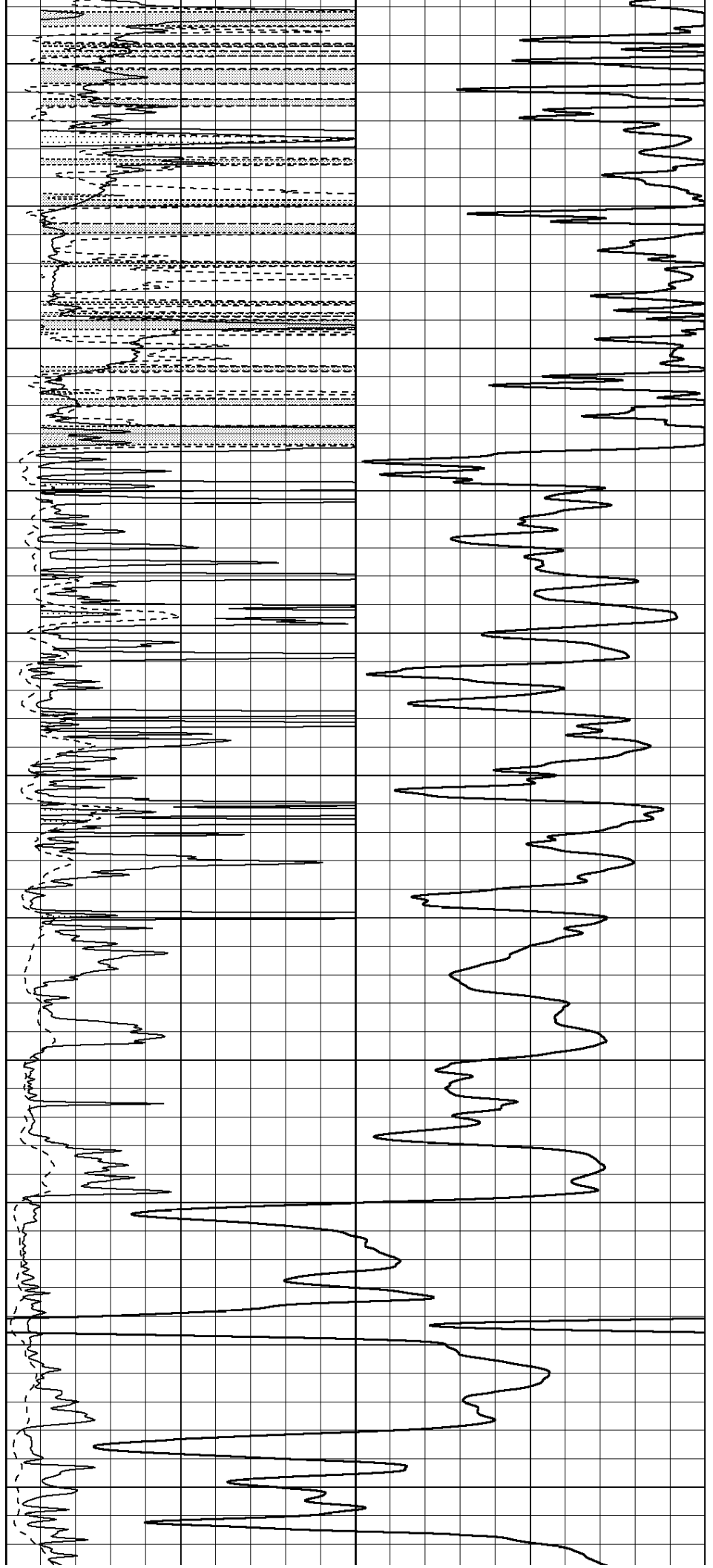
2450

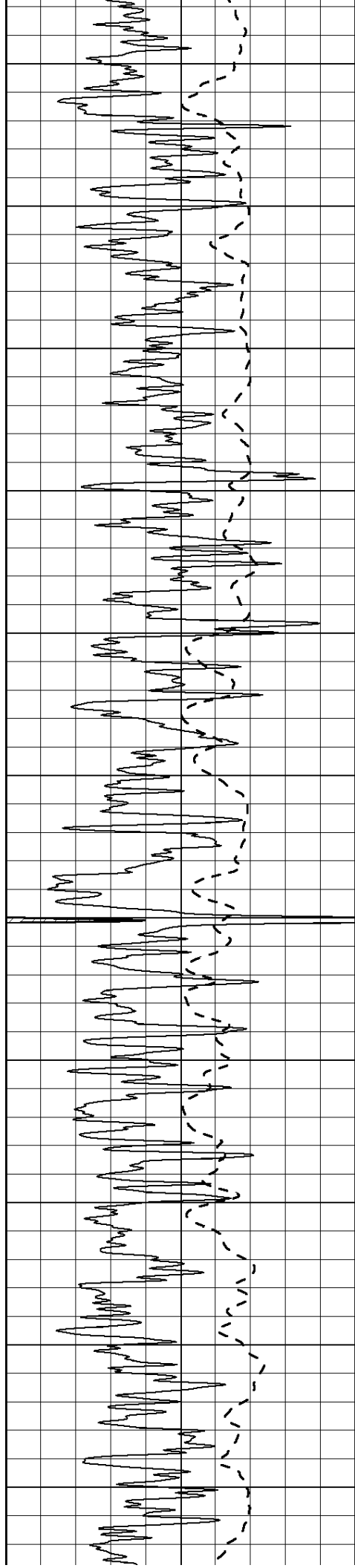
2500

2550

2600

2650





2700

2750

2800

2850

2900

2950

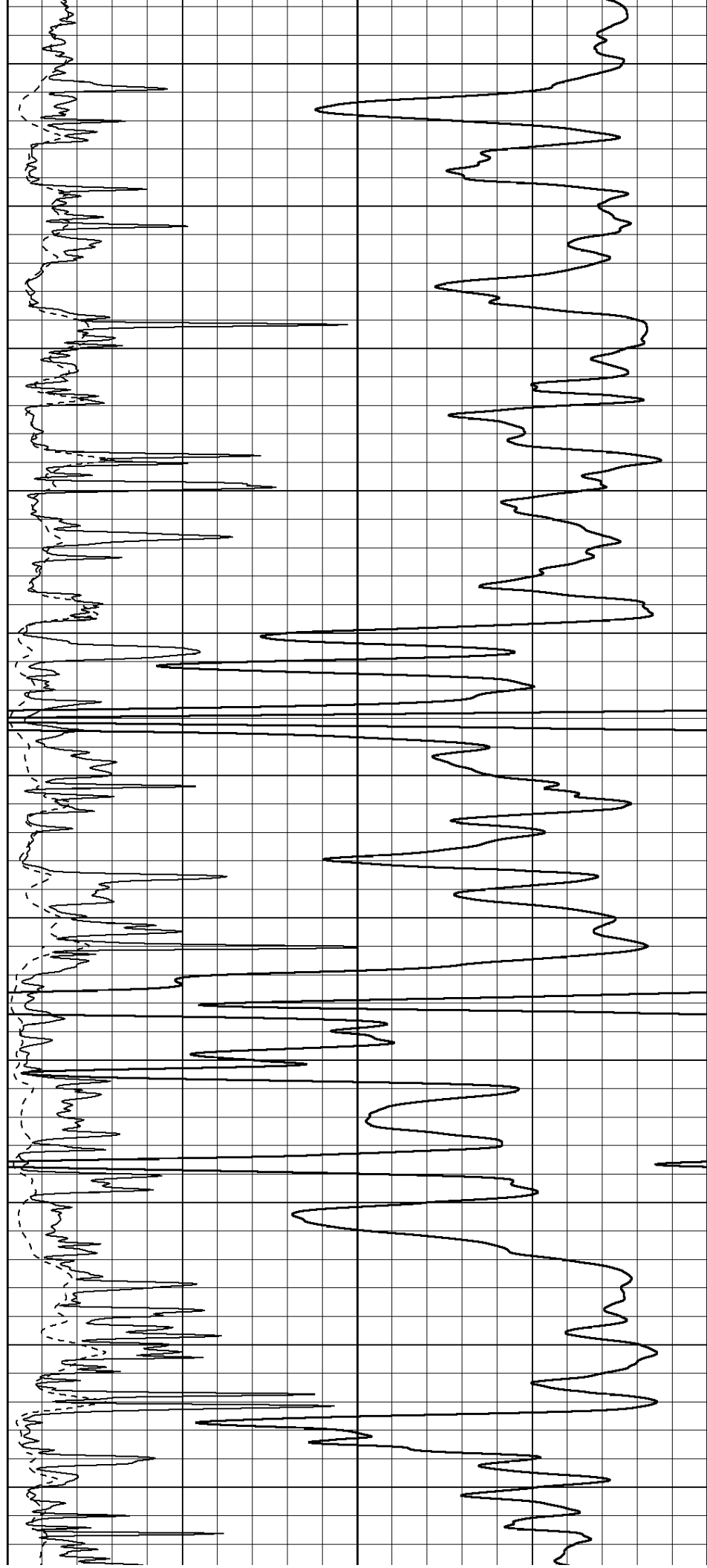
3000

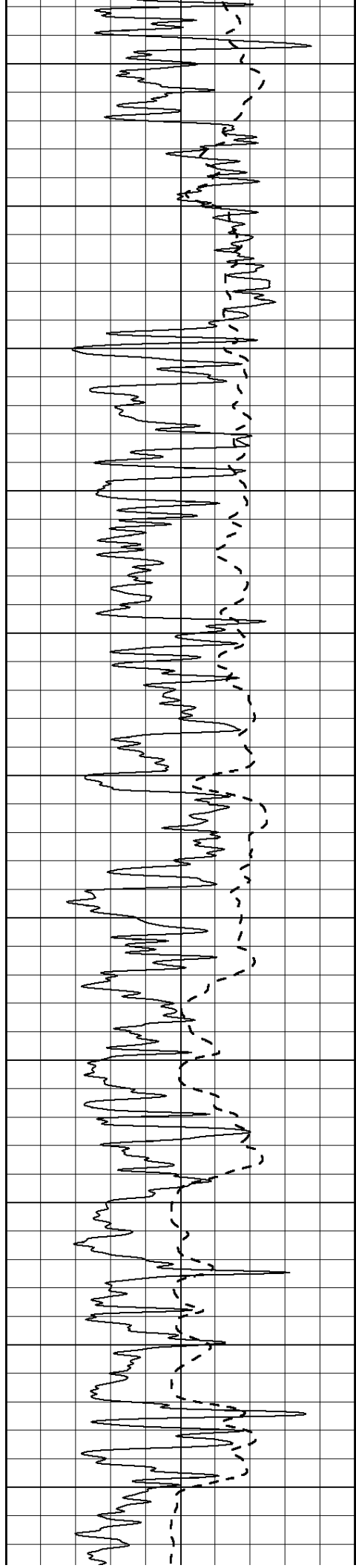
3050

3100

3150

3200





3250

3300

3350

3400

3450

3500

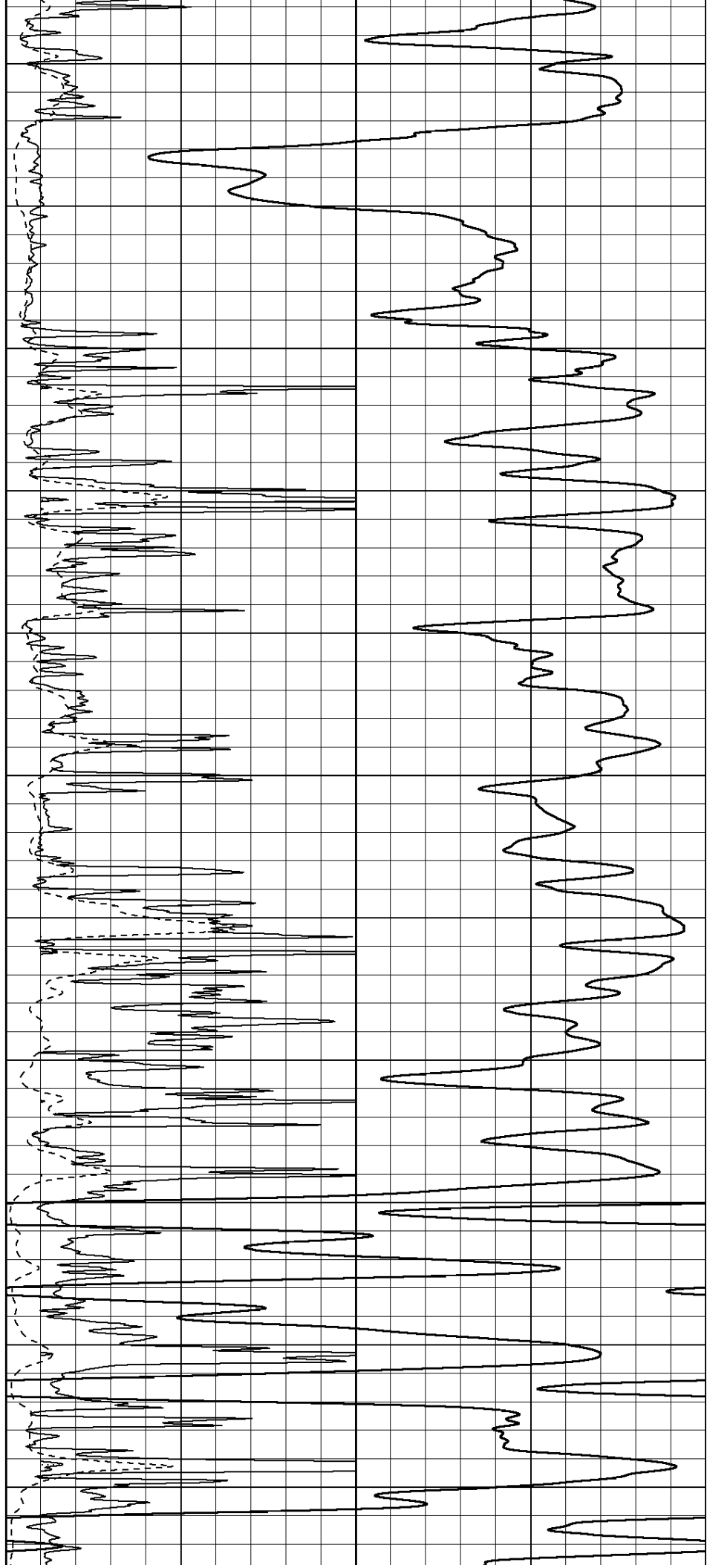
3550

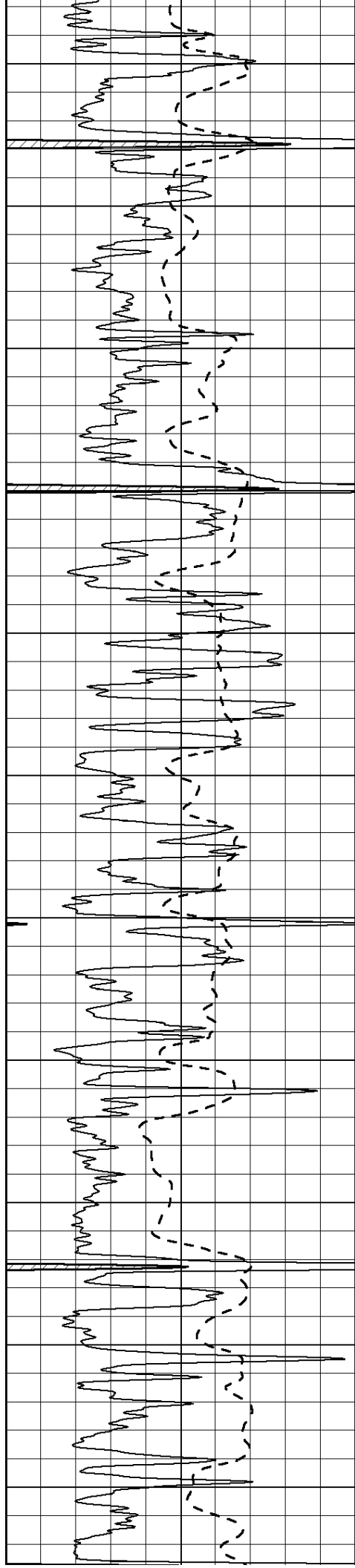
3600

3650

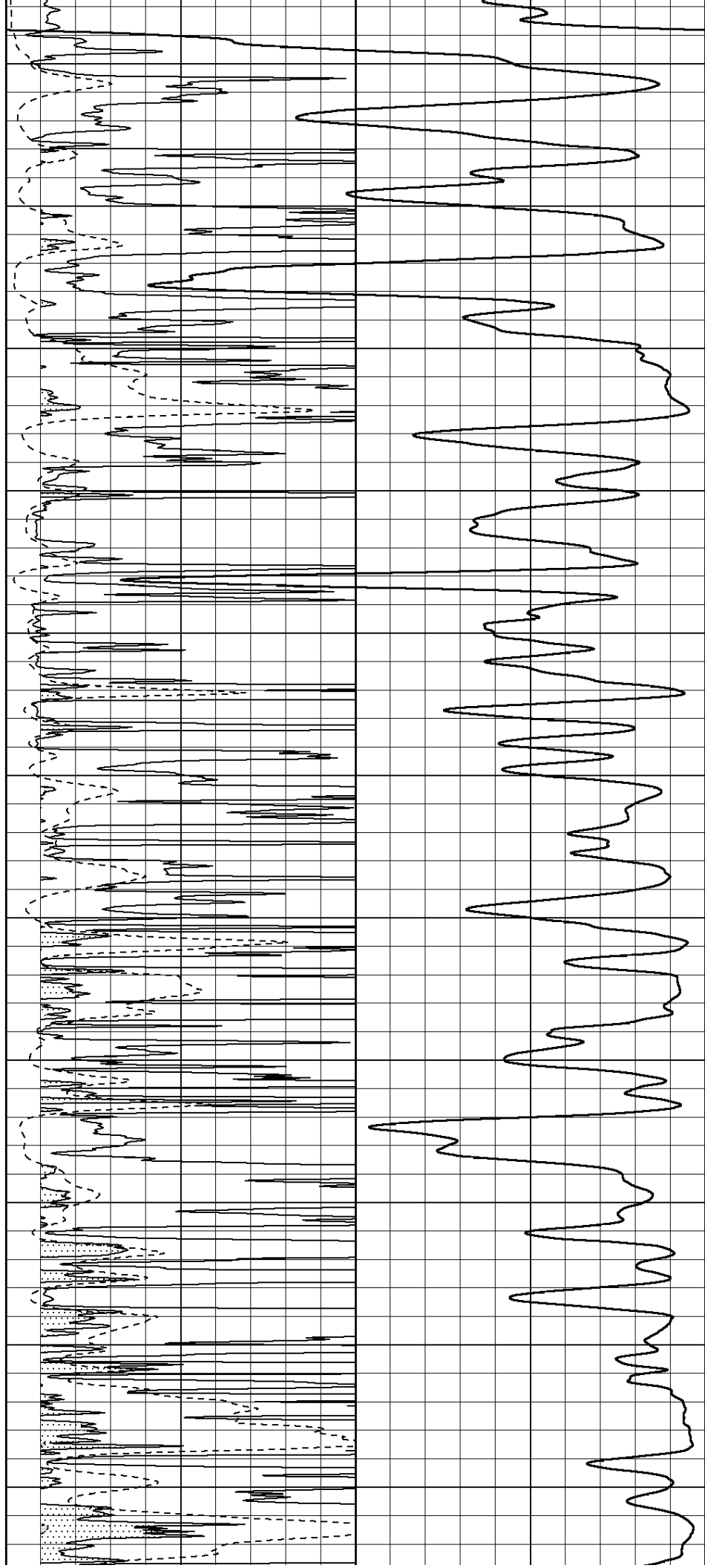
3700

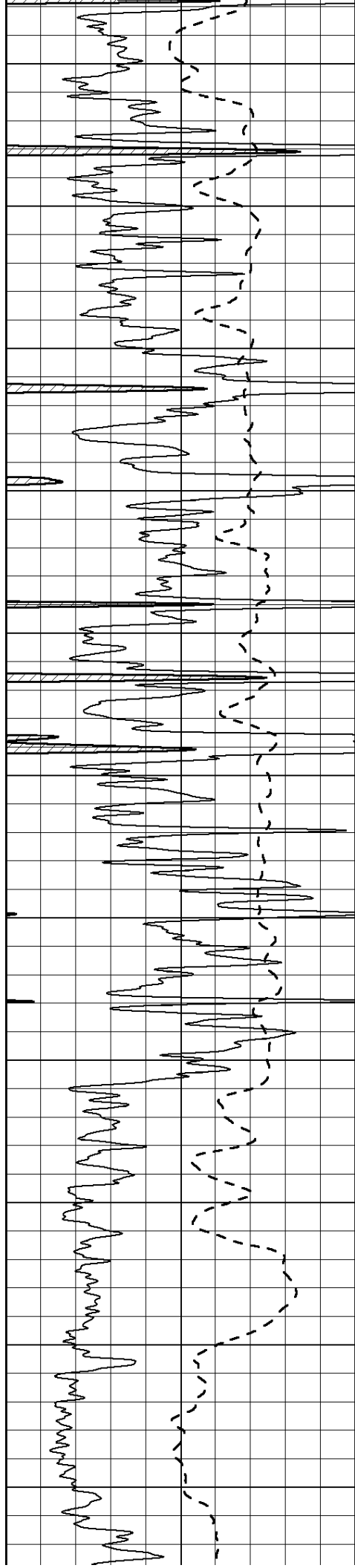
3750





3800
3850
3900
3950
4000
4050
4100
4150
4200
4250
4300





4350

4400

4450

4500

4550

4600

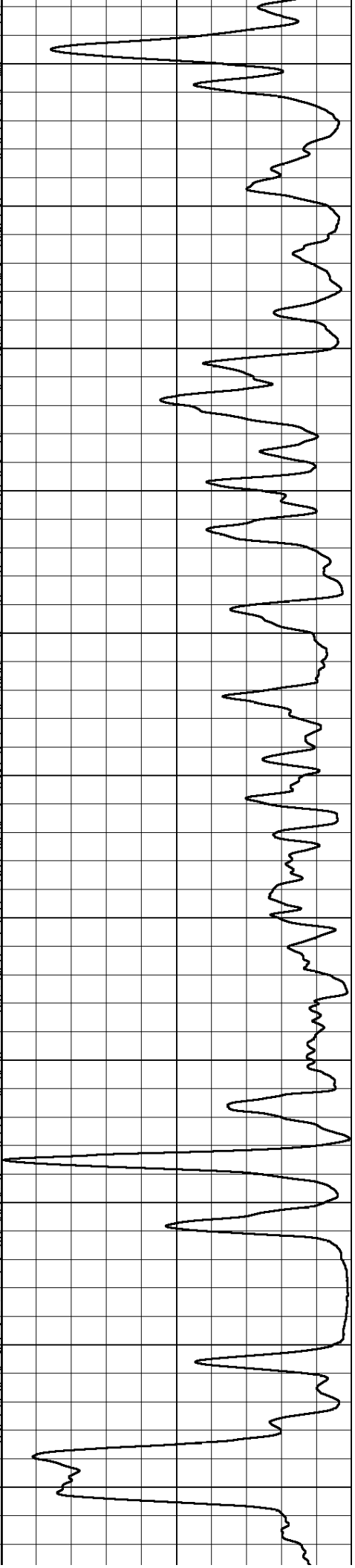
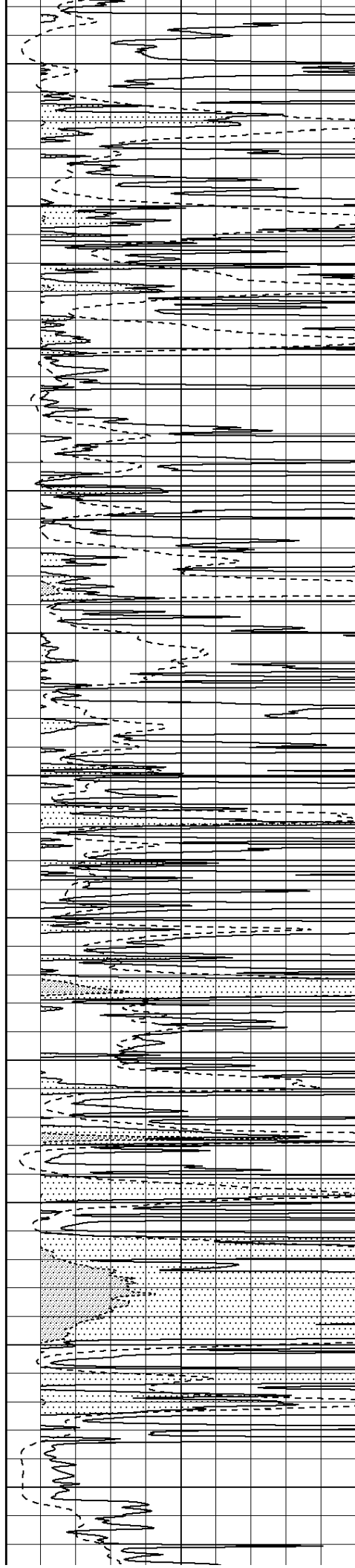
4650

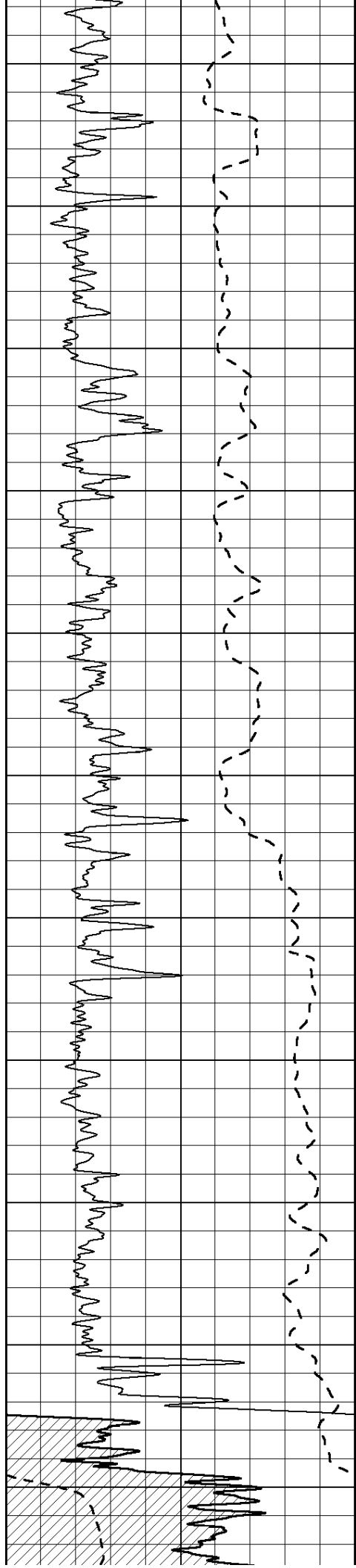
4700

4750

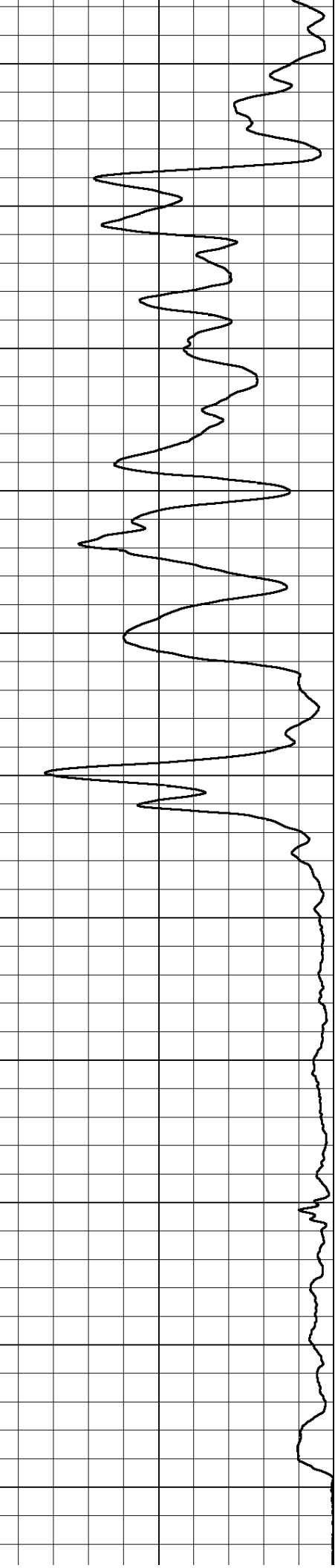
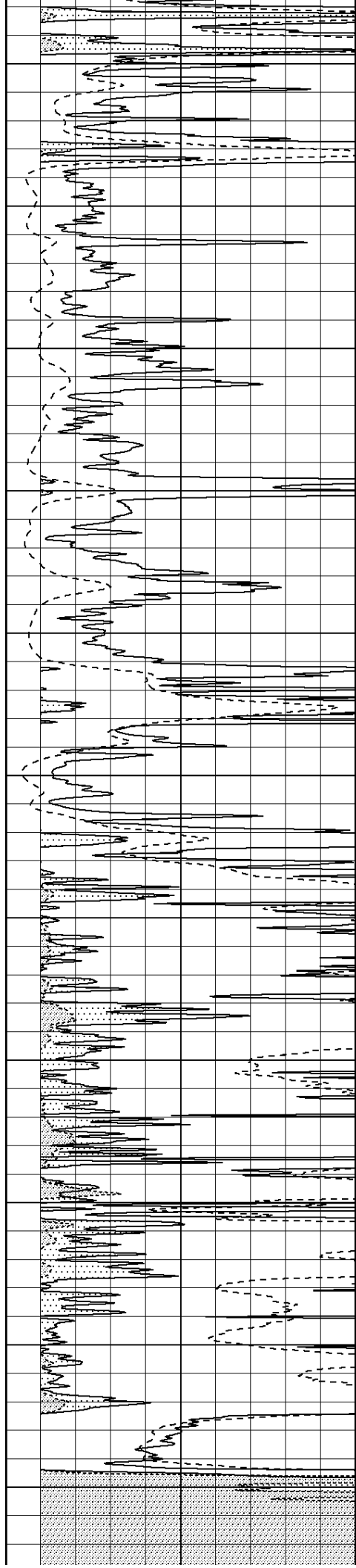
4800

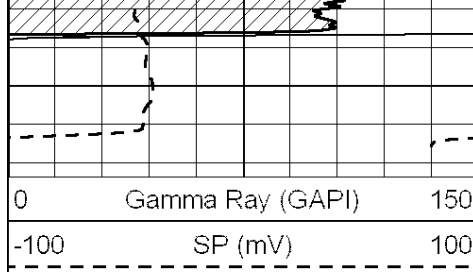
4850



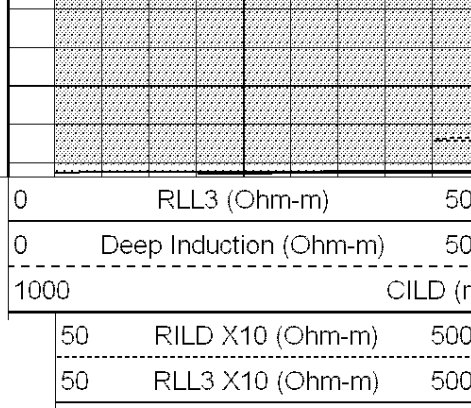


4900
4950
5000
5050
5100
5150
5200
5250
5300
5350
5400

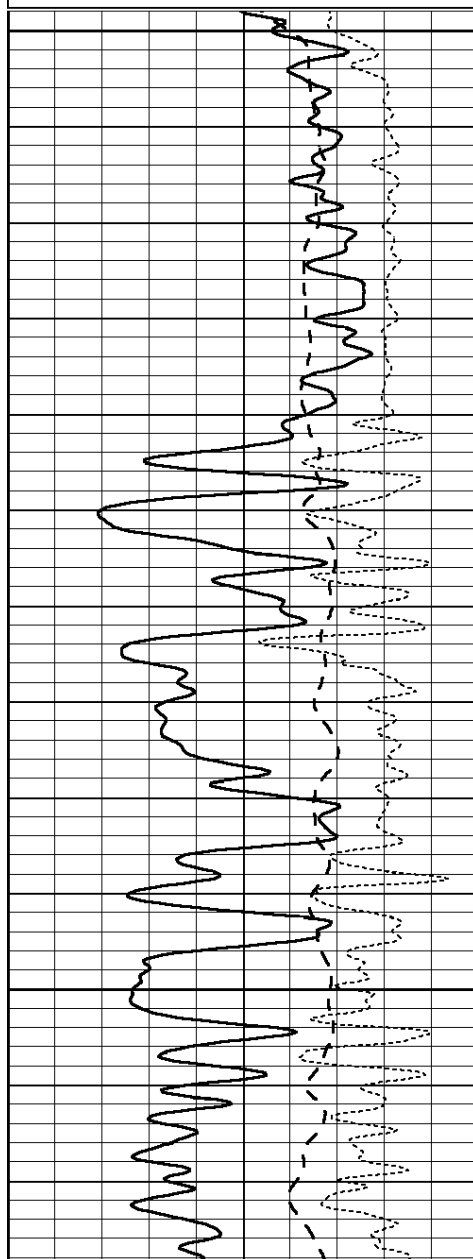
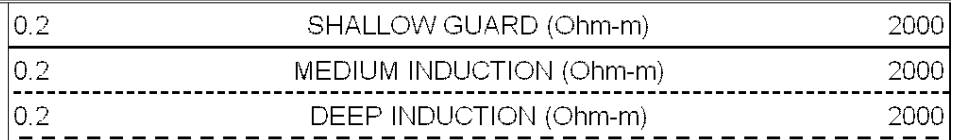
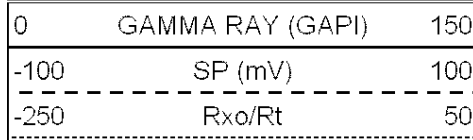




5450



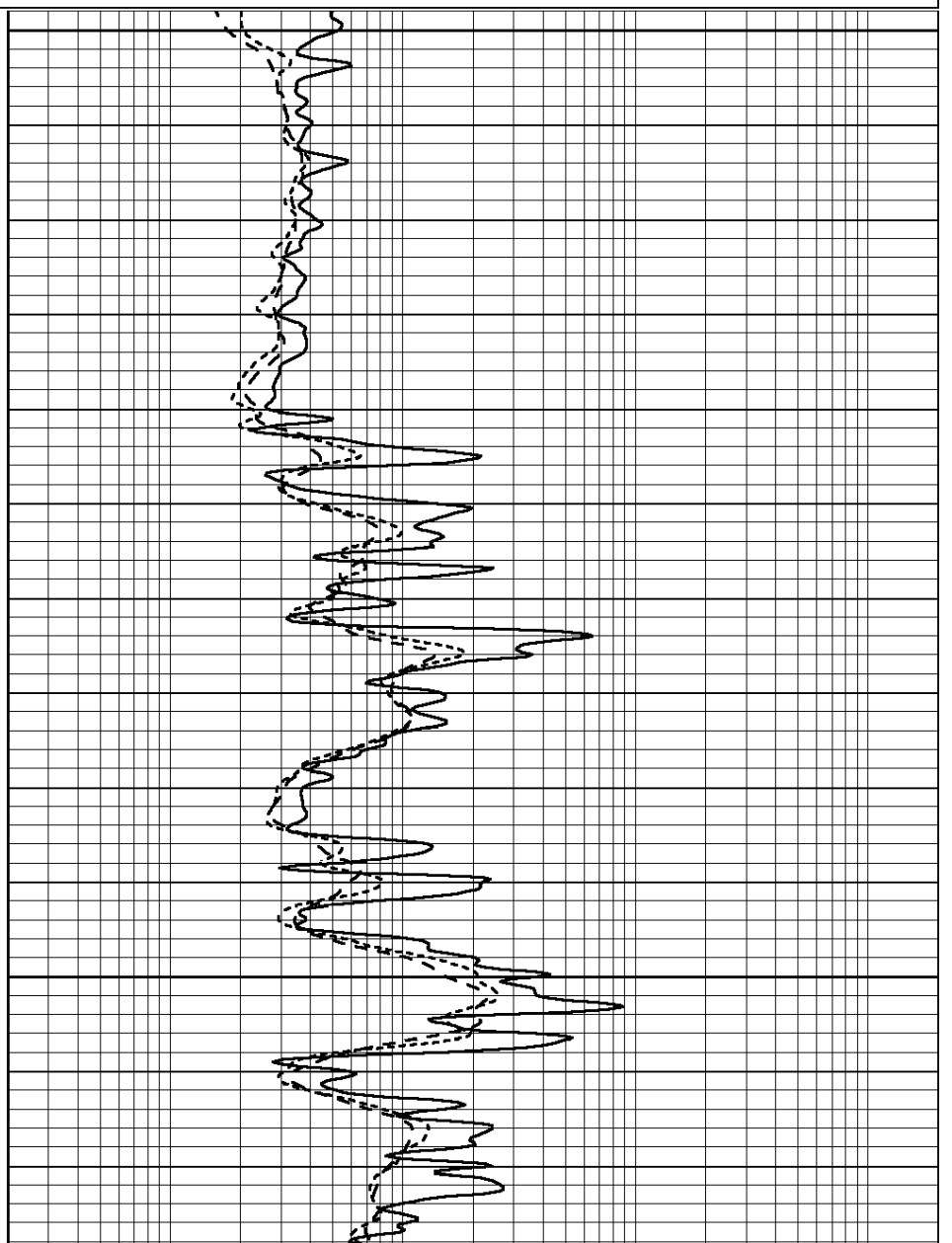
Database File: 009215ddn.db
 Dataset Pathname: pass3.6
 Presentation Format: _dil
 Dataset Creation: Wed Jun 06 12:59:10 2012 by Calc Open-Cased 090629
 Charted by: Depth in Feet scaled 1:240

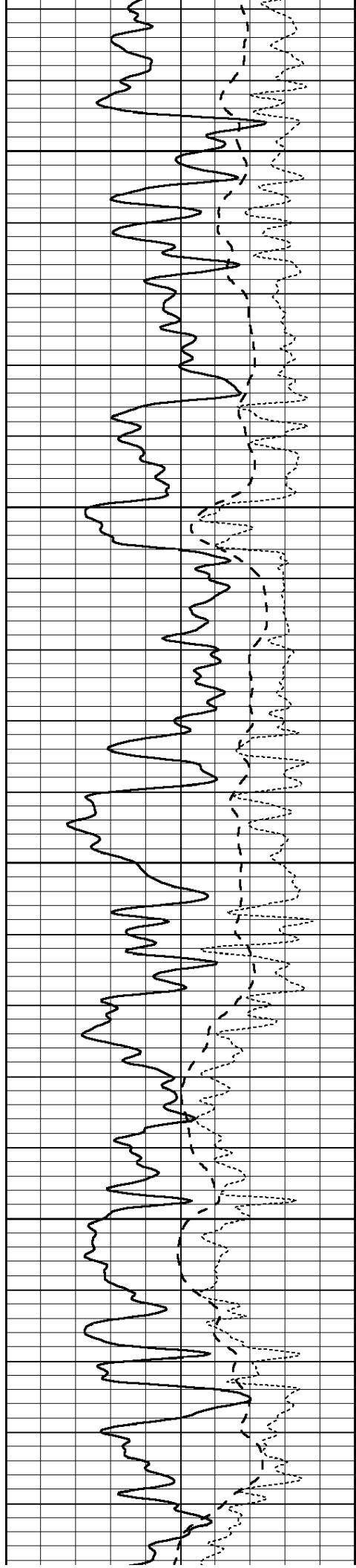


3300

3350

3400



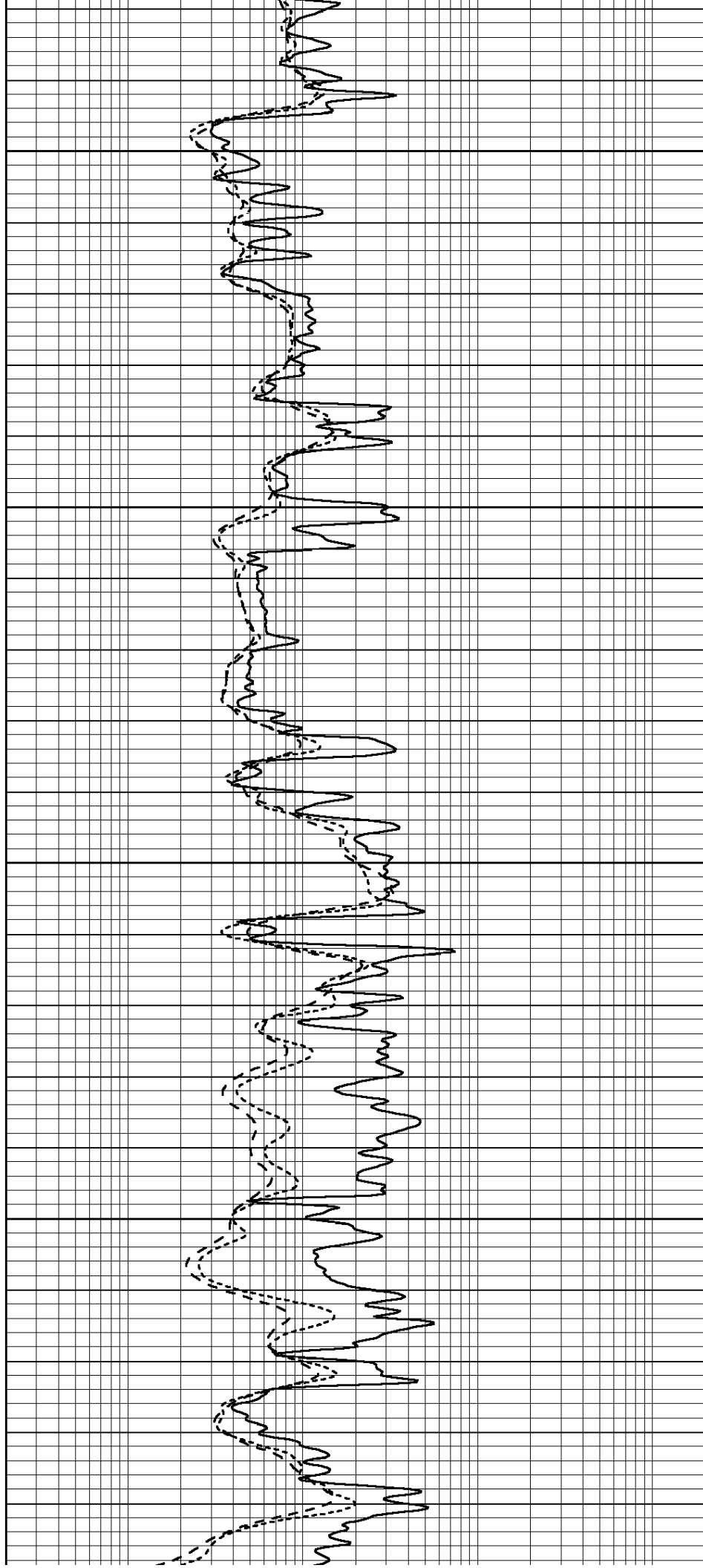


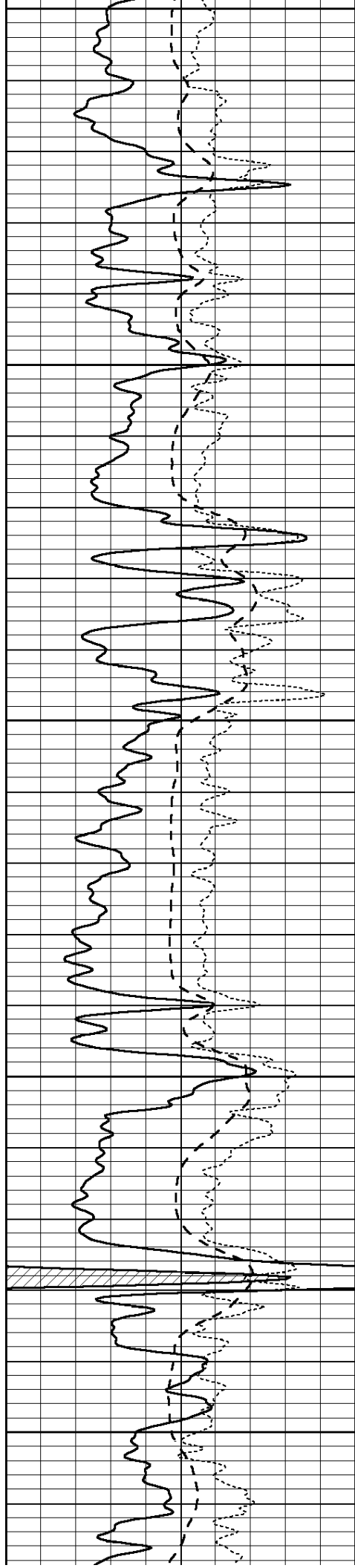
3450

3500

3550

3600





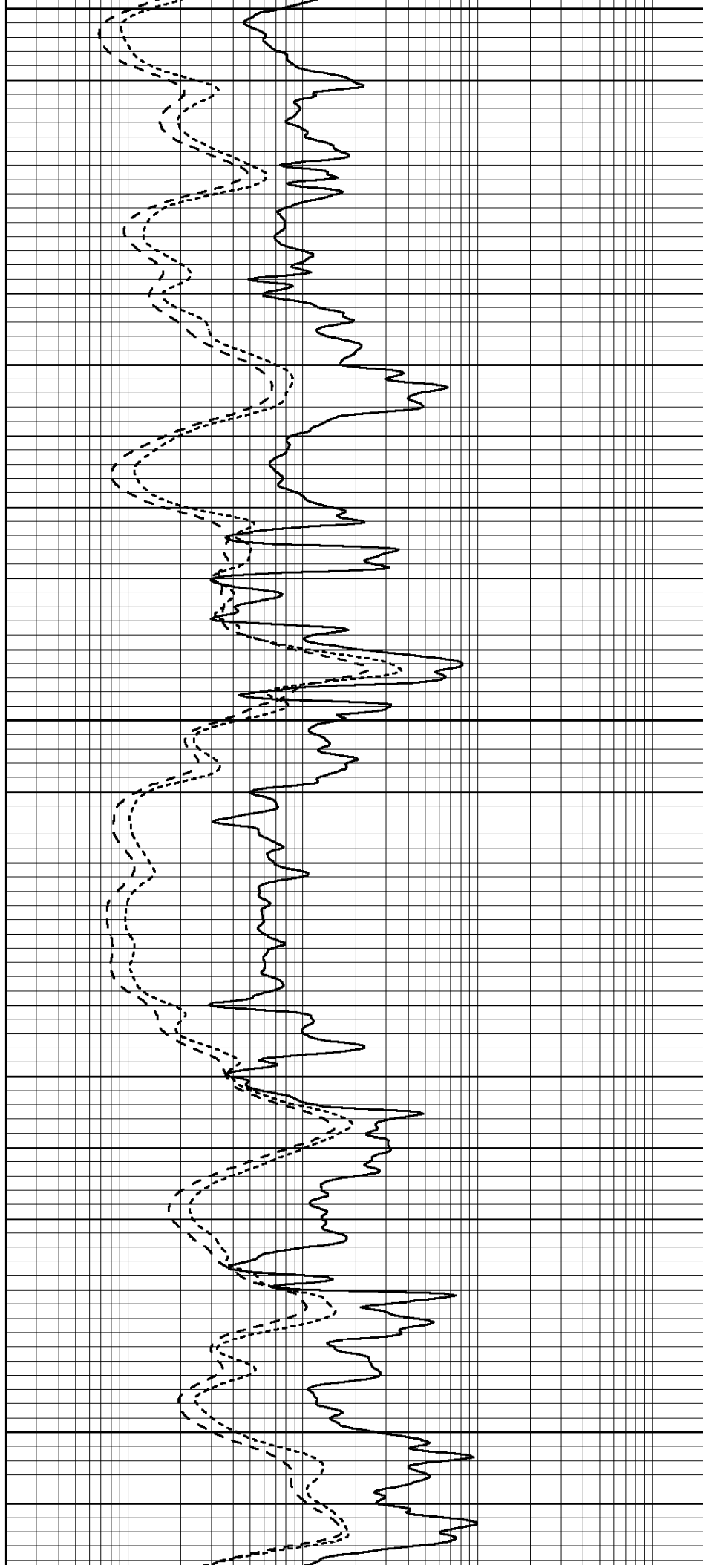
3650

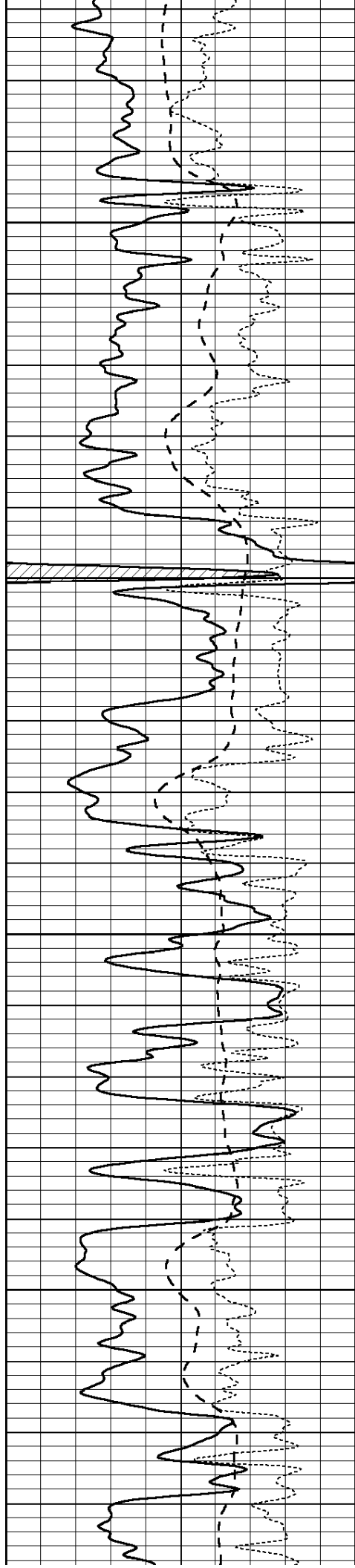
3700

3750

3800

3850



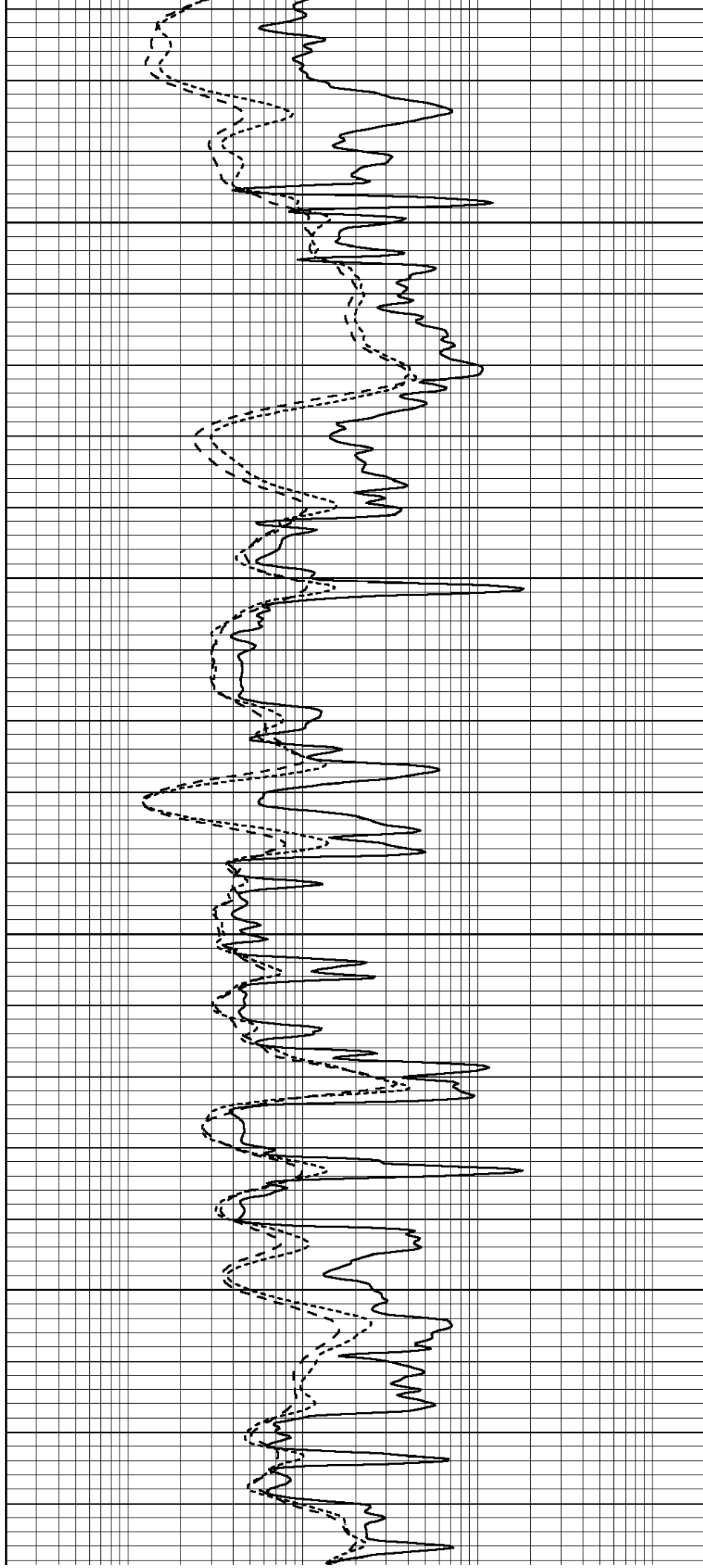


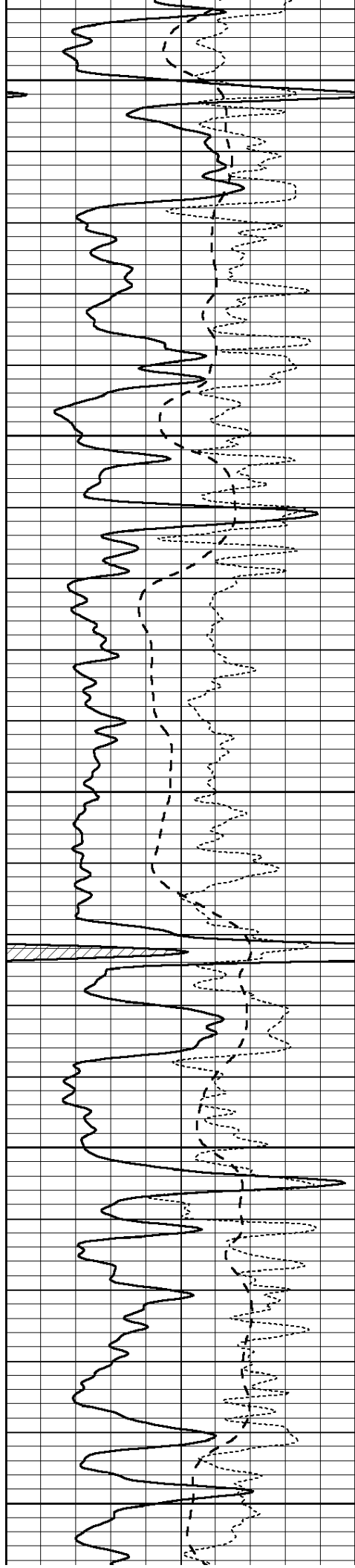
3900

3950

4000

4050





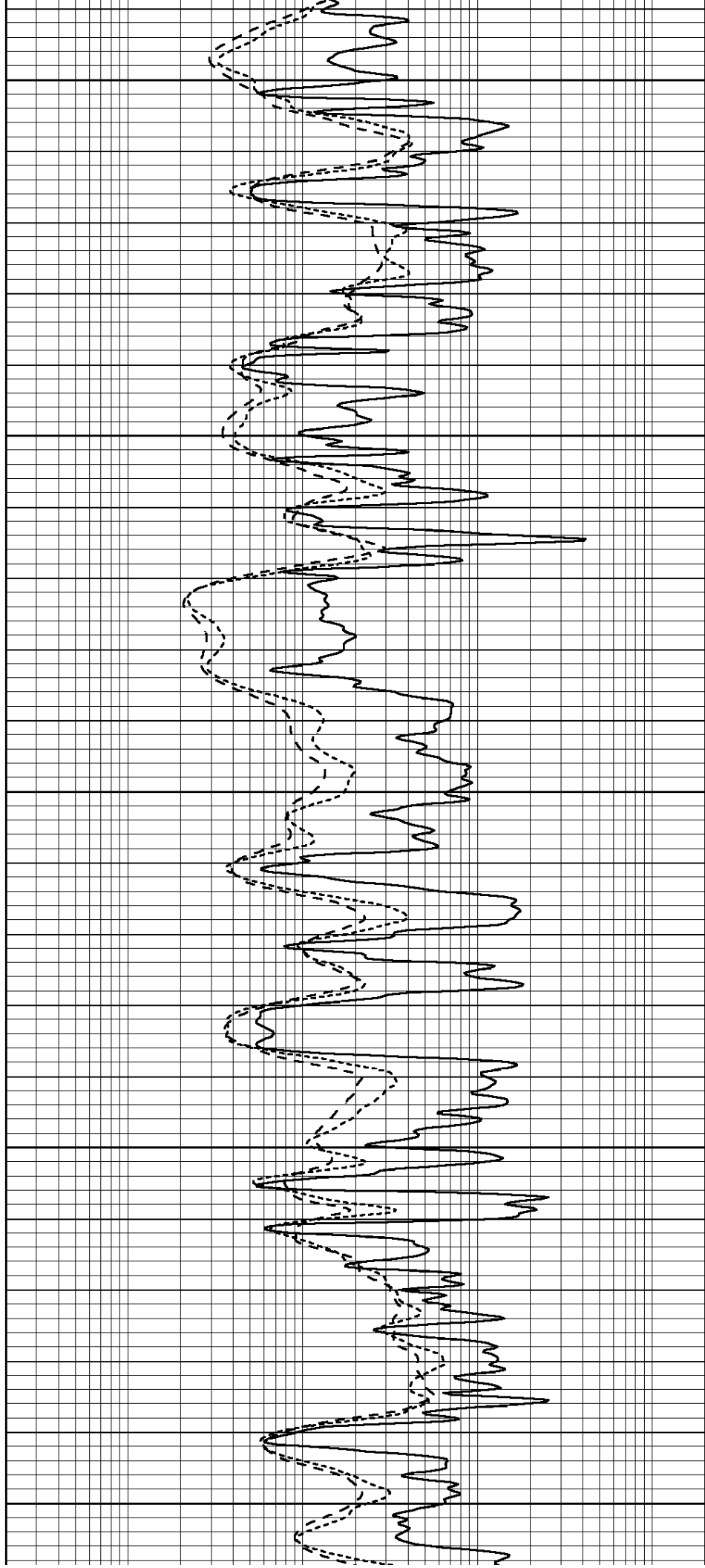
4100

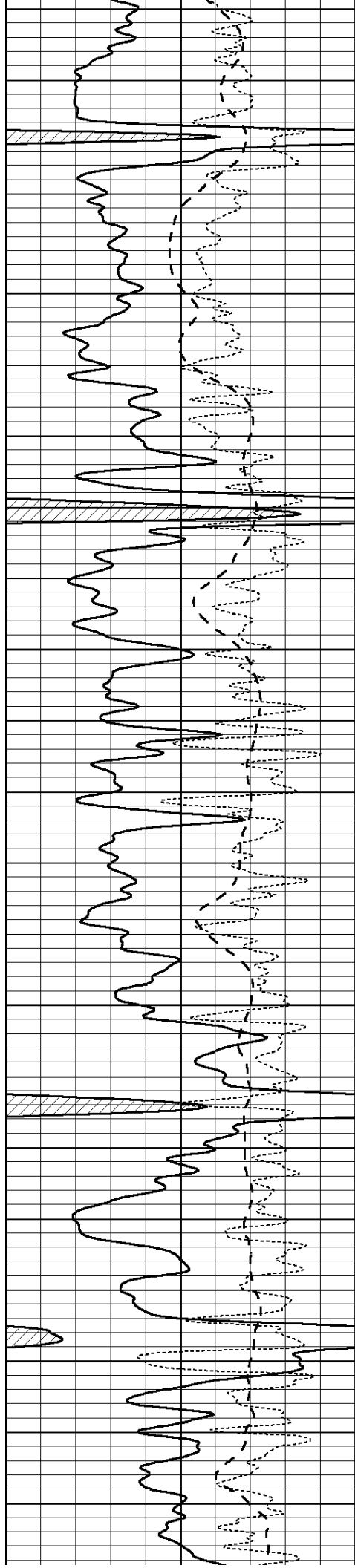
4150

4200

4250

4300



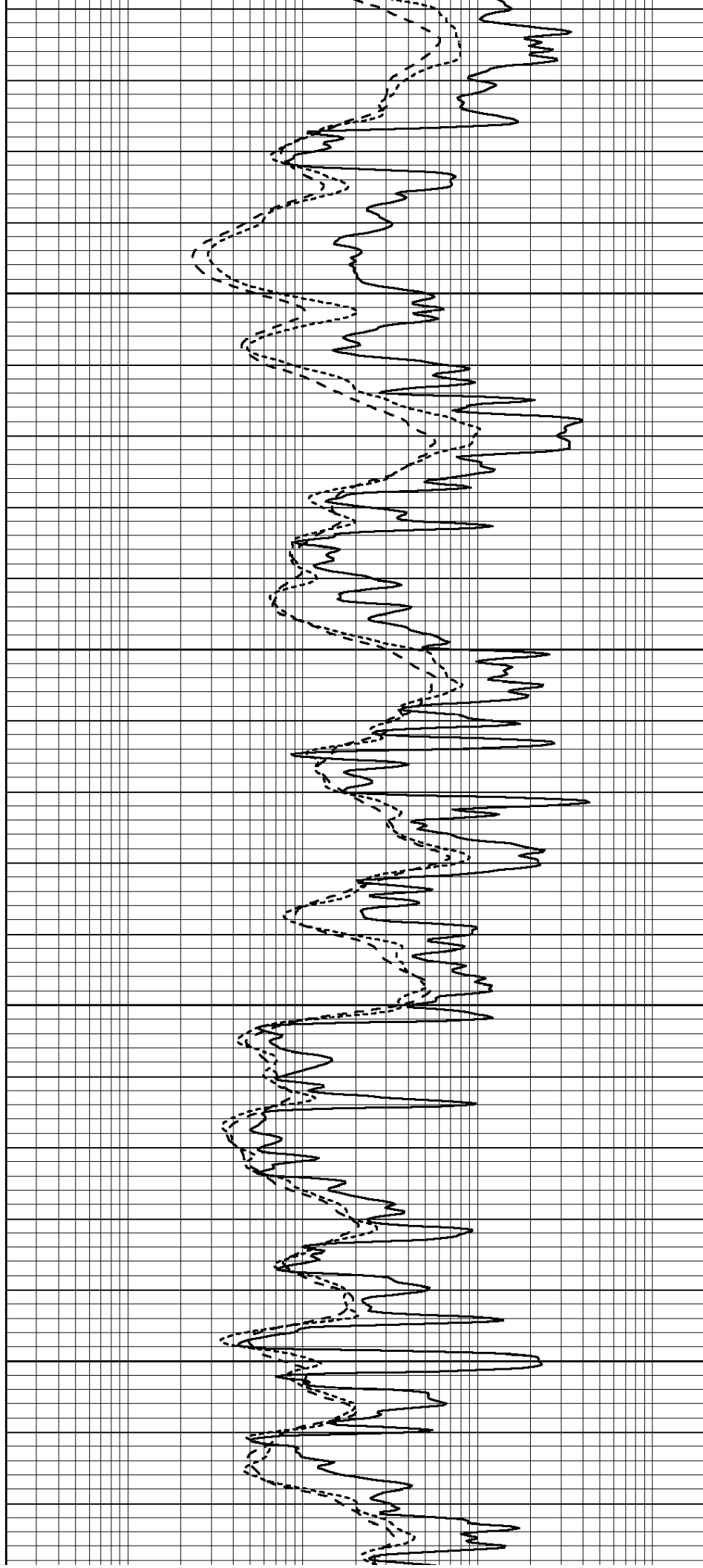


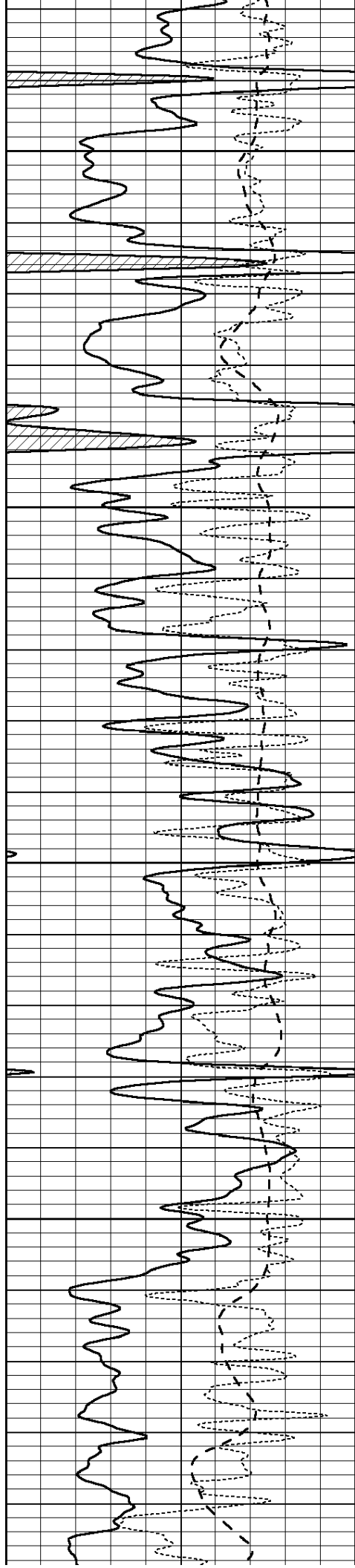
4350

4400

4450

4500



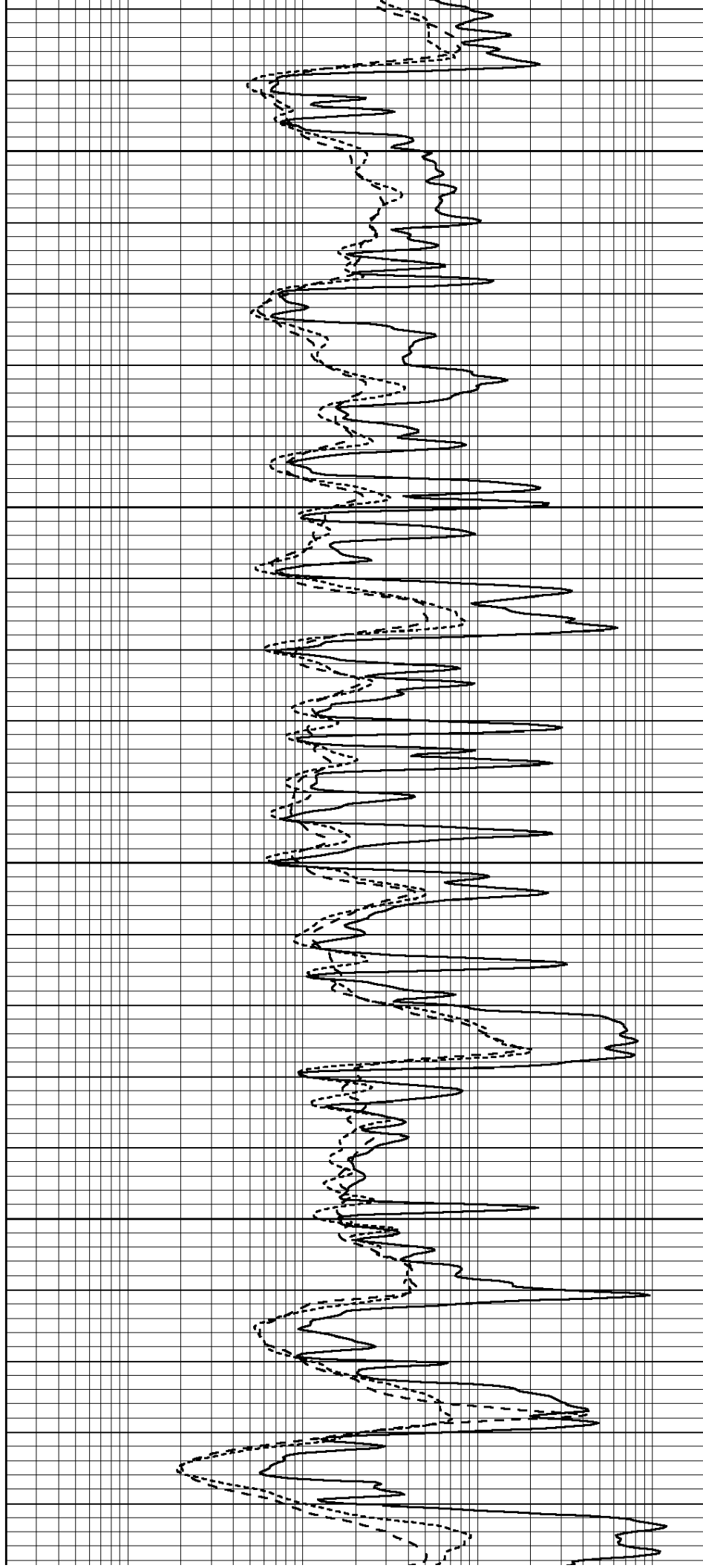


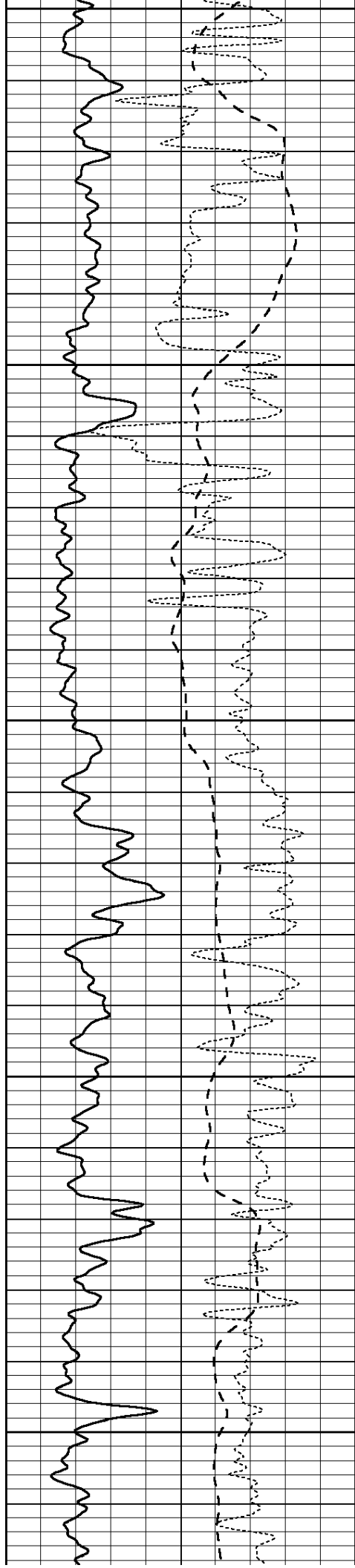
4550

4600

4650

4700





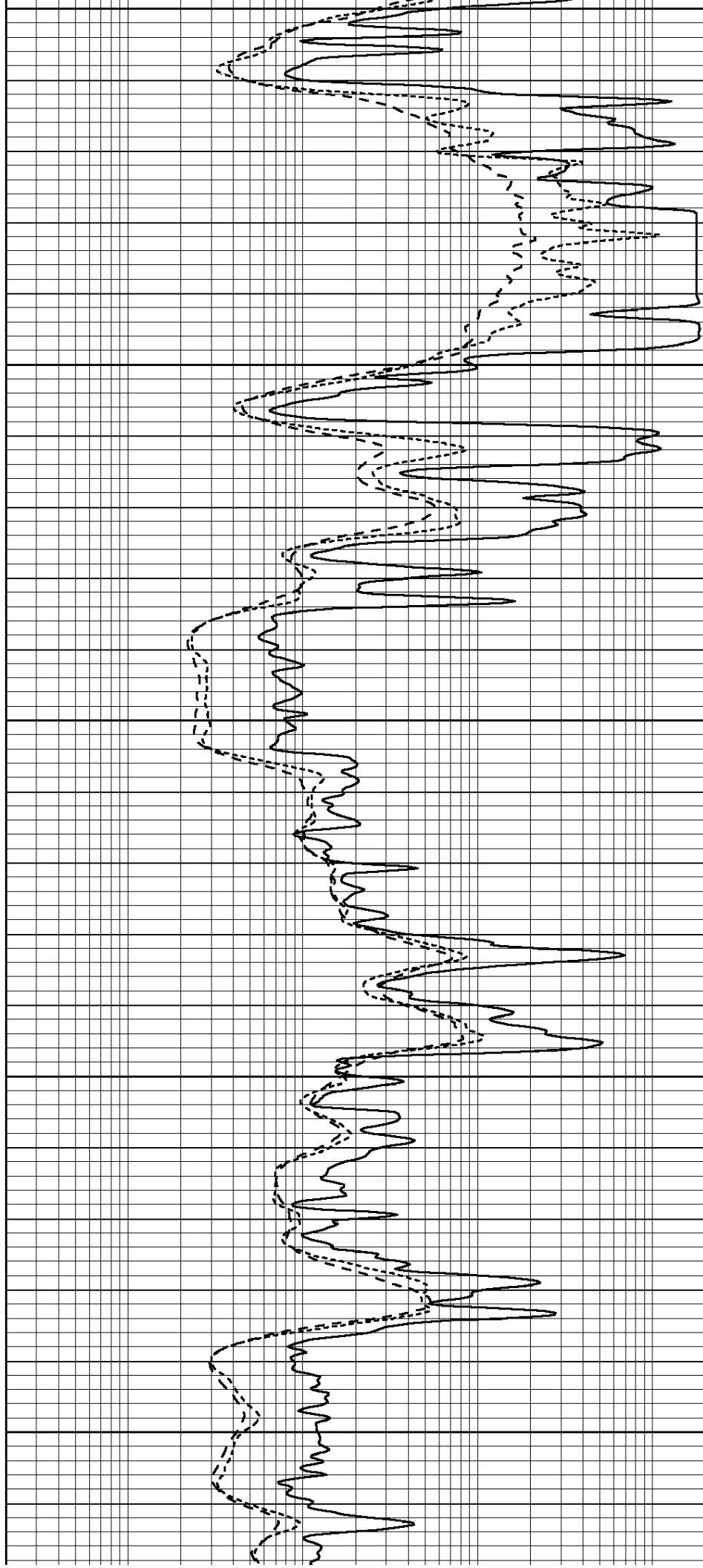
4750

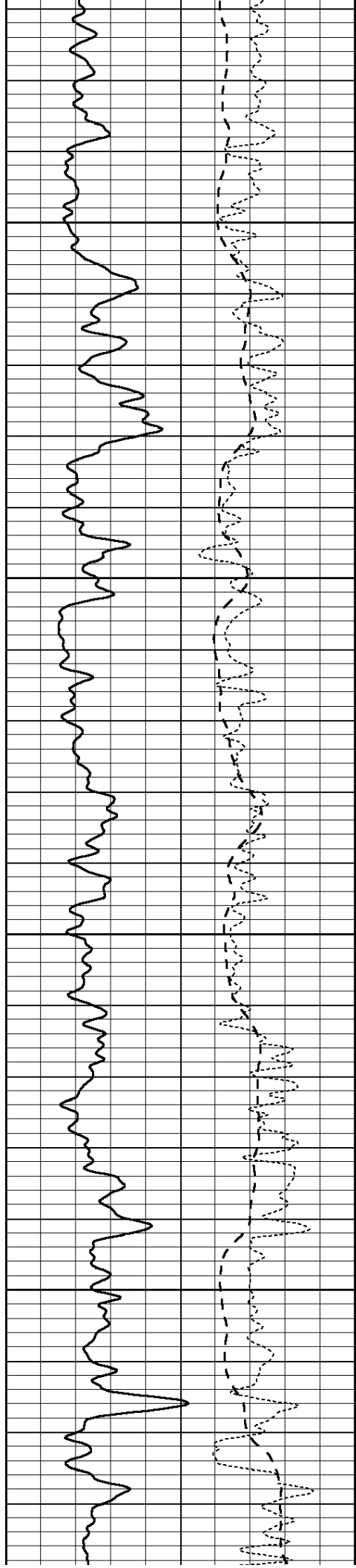
4800

4850

4900

4950



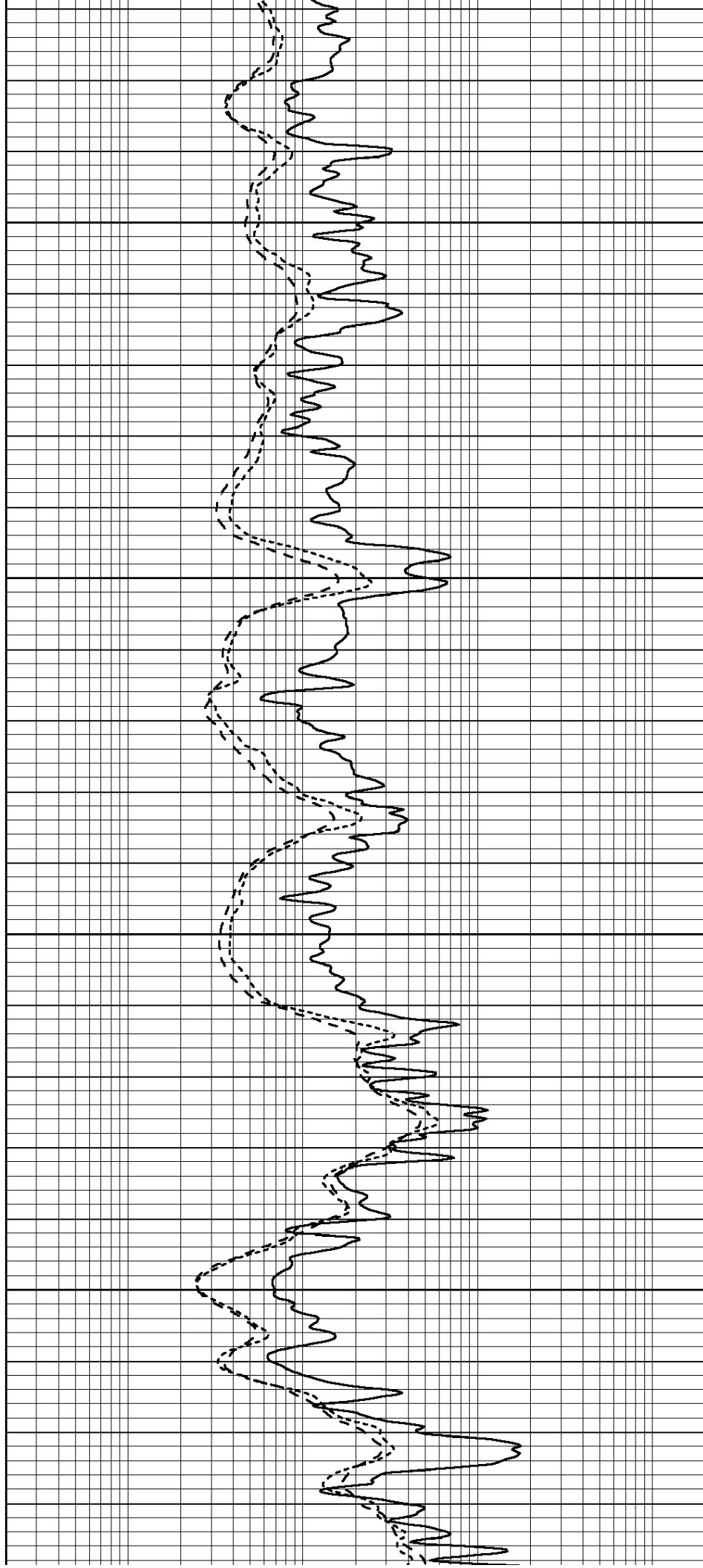


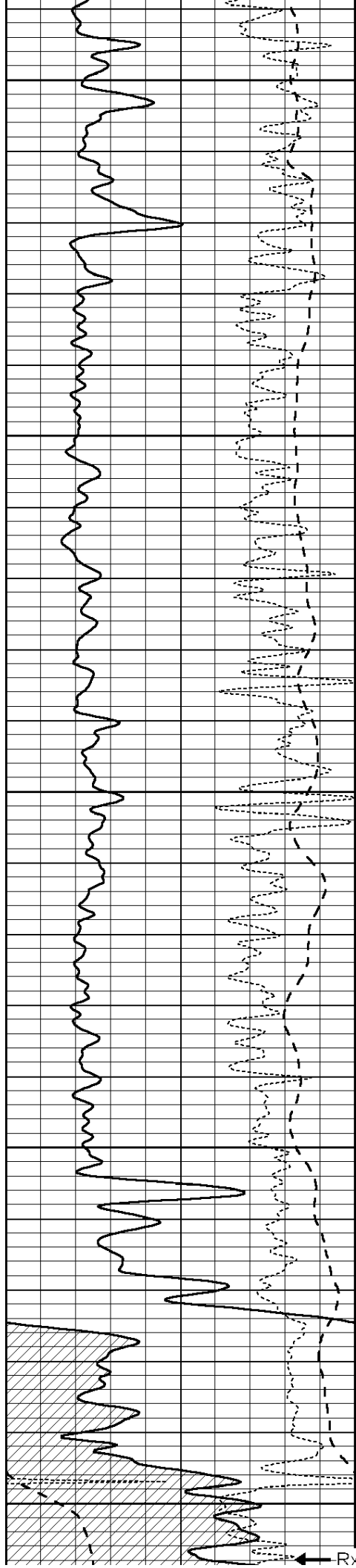
5000

5050

5100

5150





5200

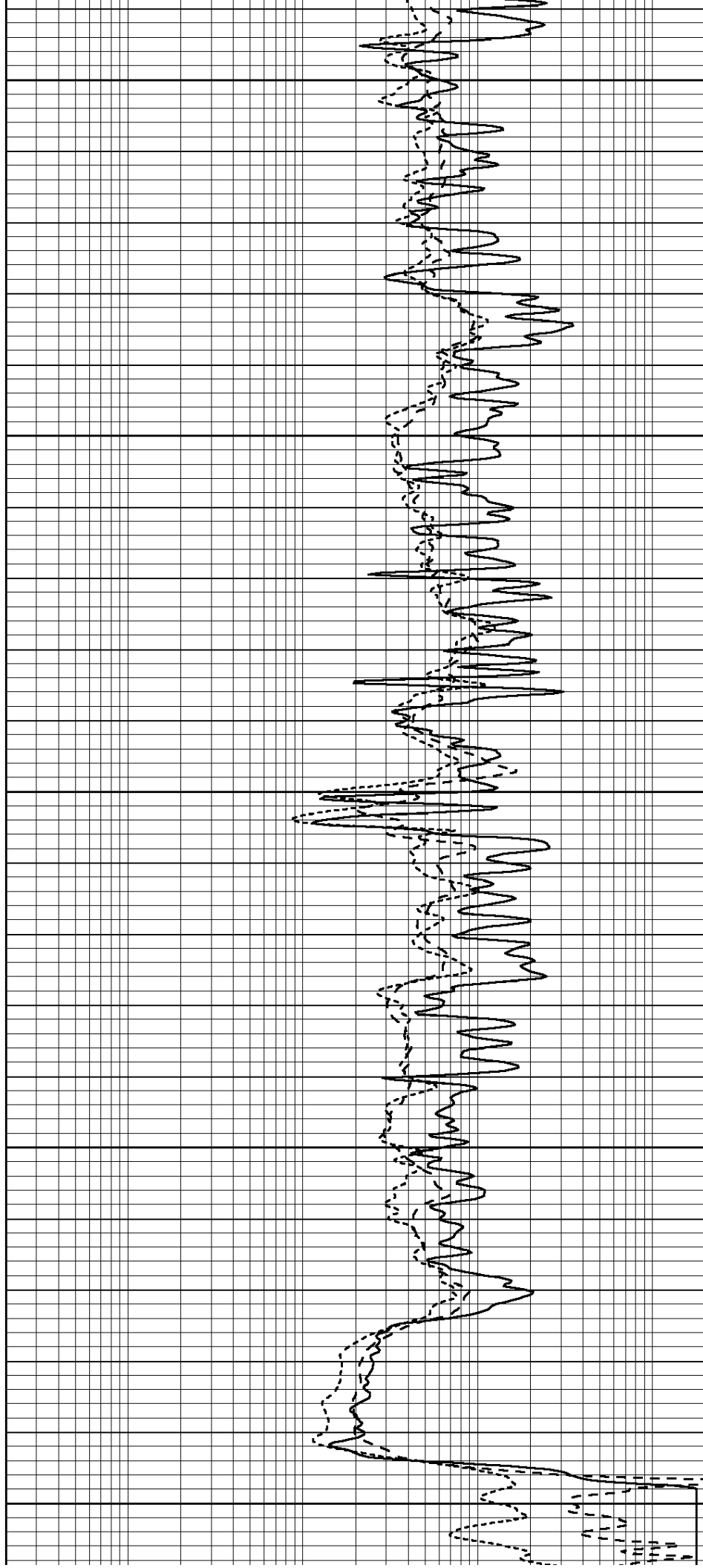
5250

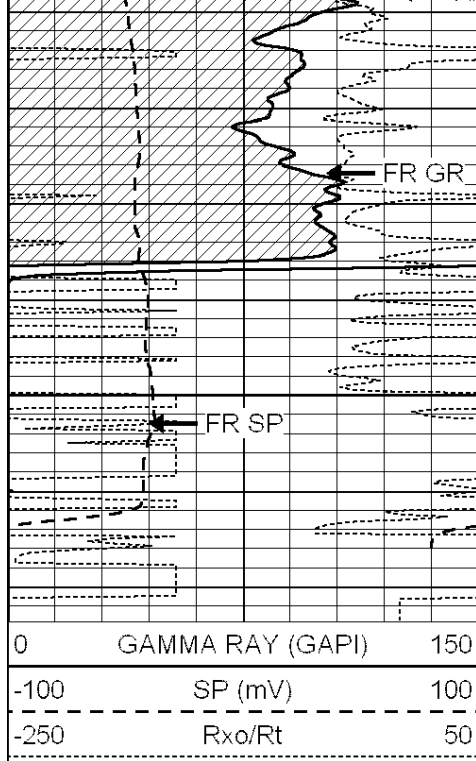
5300

5350

5400

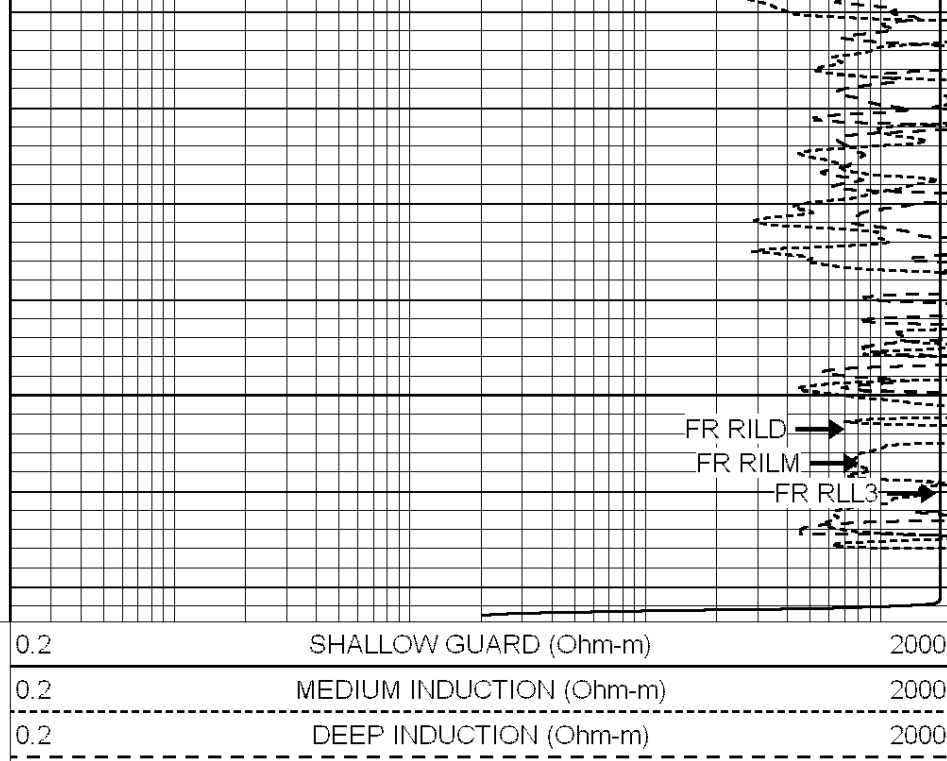
RxoRt





5450

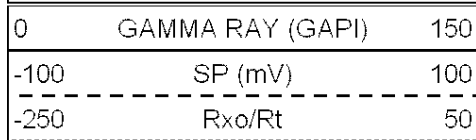
LTD 5463



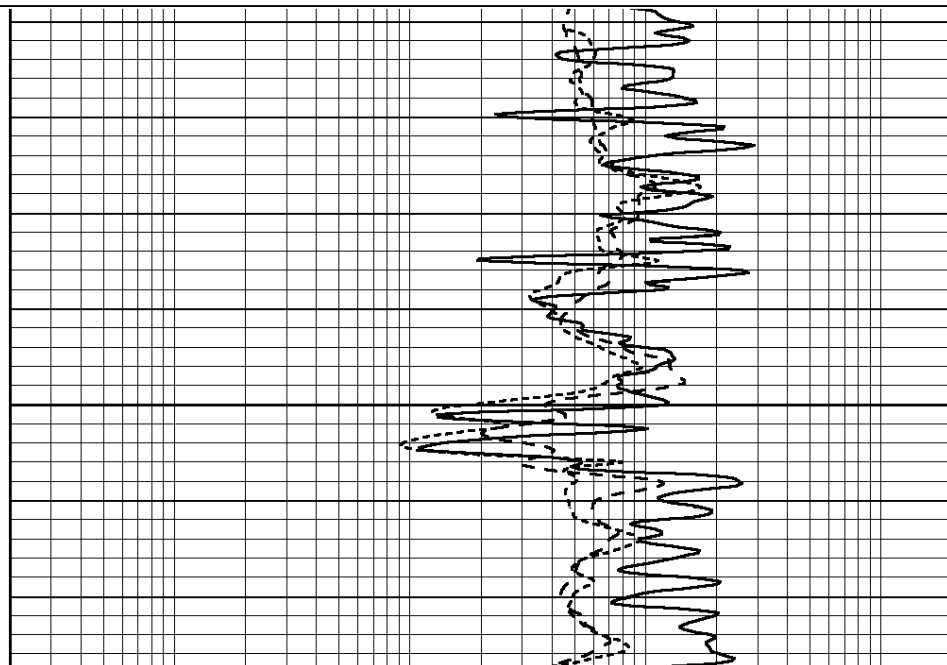
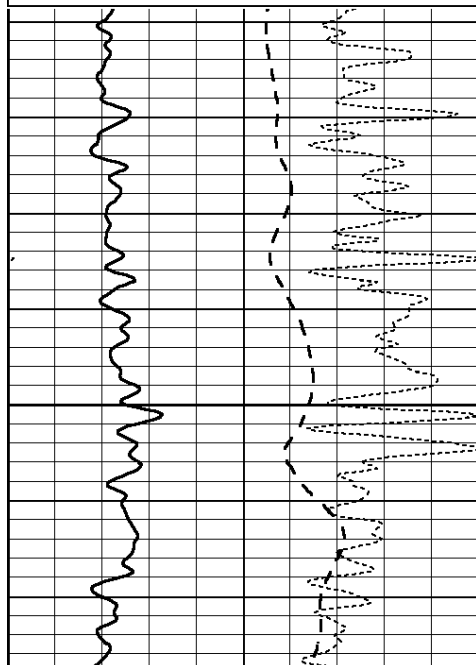
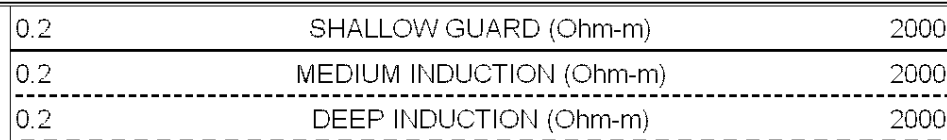
SUPERIOR
Hays,
Kansas

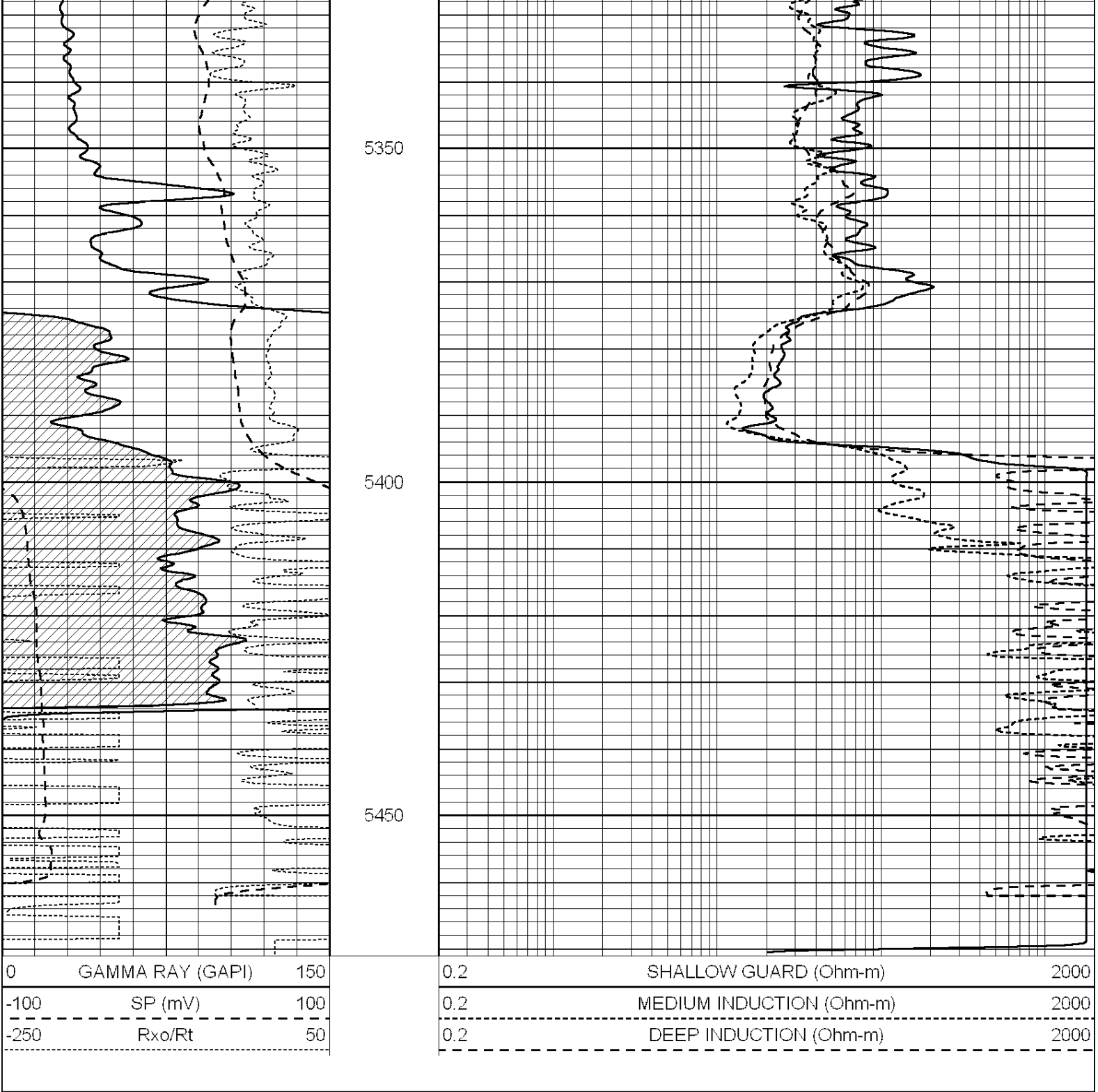
REPEAT SECTION

Database File: 009215ddn.db
 Dataset Pathname: pass2.2
 Presentation Format: _dil
 Dataset Creation: Wed Jun 06 13:01:40 2012 by Calc Open-Cased 090629
 Charted by: Depth in Feet scaled 1:240



5300





Calibration Report					
Database File:		009215ddn.db			
Dataset Pathname:		pass3.7			
Dataset Creation:		Wed Jun 06 13:24:41 2012 by Calc Open-Cased 090629			
Dual Induction Calibration Report					
Serial-Model:		PROBE8-DILG			
Surface Cal Performed:		Fri Aug 01 06:33:19 2008			
Downhole Cal Performed:		Mon Jul 28 11:08:27 2008			
After Survey Verification Performed:		Mon Jul 28 11:08:27 2008			
Surface Calibration					
Readings		References		Results	
Loop:	Air	Loop	Air	Loop	m

Loop:	Alt	Loop		Alt	Loop		m	b
Deep	0.015	0.648	V	0.000	400.000	mmho/m	632.616	-9.730
Medium	0.029	0.796	V	0.000	464.000	mmho/m	605.049	-17.680
Internal:	Zero	Cal		Zero	Cal		m	b
Deep	0.017	0.657	V	0.000	400.000	mmho/m	625.153	-10.619
Medium	0.016	0.757	V	0.000	464.000	mmho/m	625.992	-9.739

Downhole Calibration								
	Readings			References			Results	
	Zero	Cal		Zero	Cal		m'	b'
Deep	0.000	0.000	mmho/m	2.011	405.777	mmho/m	1.000	0.000
Medium	0.000	0.000	mmho/m	7.590	503.393	mmho/m	1.000	0.000
LL3		7.500	V		1400.000	Ohm-m		
		0.000	V		20.000	Ohm-m		
		-7.200	V		3800.000	mmho-m		

After Survey Verification								
	Readings			Targets			Results	
	Zero	Cal		Zero	Cal		m'	b'
Deep	0.000	0.000	mmho/m	0.000	0.000	mmho/m	0.000	0.000
Medium	0.000	0.000	mmho/m	0.000	0.000	mmho/m	0.000	0.000
LL3		1.000	Ohm-m		1.000	Ohm-m		
		0.000	Ohm-m		0.000	Ohm-m		
		1.000	mmho-m		1.000	mmho-m		

Compensated Density Calibration Report

Serial-Model:	GEAR4-GEARHART
Source / Verifier:	143 / 143
Master Calibration Performed:	Mon Mar 19 19:07:19 2012

Master Calibration								
	Density			Far Detector		Near Detector		
Magnesium	1.710	g/cc		1015.91		497.51	cps	
Aluminum	2.570	g/cc		227.67		350.20	cps	
	Spine Angle = 76.79			Density/Spine Ratio = 0.560				
	Size			Reading				
Small Ring	8.00	in		2.25	V			
Large Ring	14.00	in		4.37	V			

Compensated Neutron Calibration Report

Serial Number:	6I
Tool Model:	G

CALIBRATION						
Detector	Readings		Target		Normalization	
Short Space	1.00	cps	1.00	cps	1.0000	
Long Space	1.00	cps	1.00	cps	1.0000	

Gamma Ray Calibration Report

Serial Number:	#8
Tool Model:	OPEN
Performed:	Mon Jun 13 16:56:43 2011

Calibrator Value:	150.0	GAPI
Background Reading:	0.0	cps
Calibrator Reading:	175.0	cps
Sensitivity:	0.8371	GAPI/cps