

Company	Meridian Energy Inc.	Location:	330' FSL & 405' FVL	API #:	15 163 24029	Other Services	DIL CNL
Well	Hamel 1-A	SEC	33	TMP	9S	RGE	19W
Field	Lynd	Ground Level		Elevation	2211'		
County	Rooks	Permanent Datum		Log Measured From	KB 7 ASL		
State	Kansas	Drilling Measured From			KB		
Date					9-18-12		
Run Number	Two						
Depth Driller	3907						
Bottom Logger	3901						
Bottom Logger Interval	3799'						
Top Log Interval	3100'						
Casing Driller	8 5/8" @ 216'						
Casing Logger	216'						
Bit Size	7 7/8"						
Type Fluid in Hole	Chemical Mud						
Density/Viscosity	9.1/71						
pH / Fluid Loss	10.5/3.0						
Source of Sample	Pit						
Rmt @ Meas. Temp	.68@75defr						
Rmt @ Meas. Temp	1.1@75defr						
Source of Rmt / Rmc	Calculated						
Rm @ BHT	65@105defr						
Time Circulation Stopped	12:00 a.m						
Time Logger on Bottom	4:15 a.m						
Maximum Recorded Temperature	104.5						
Equipment Number	1045						
Location	Hays, KS						
Recorded By	L. Smith						
Missed By	M. Healdston						

<<< Fold Here >>>

All interpretations are opinions based on inferences from electrical or other measurements and we cannot and do not guarantee the accuracy or correctness of any interpretation, and we shall not, except in the case of gross or willful negligence on our part, be liable or responsible for any loss, costs, damages, or expenses incurred or sustained by anyone resulting from any interpretation made by any of our officers, agents or employees. These interpretations are also subject to our general terms and conditions set out in our current Price Schedule.

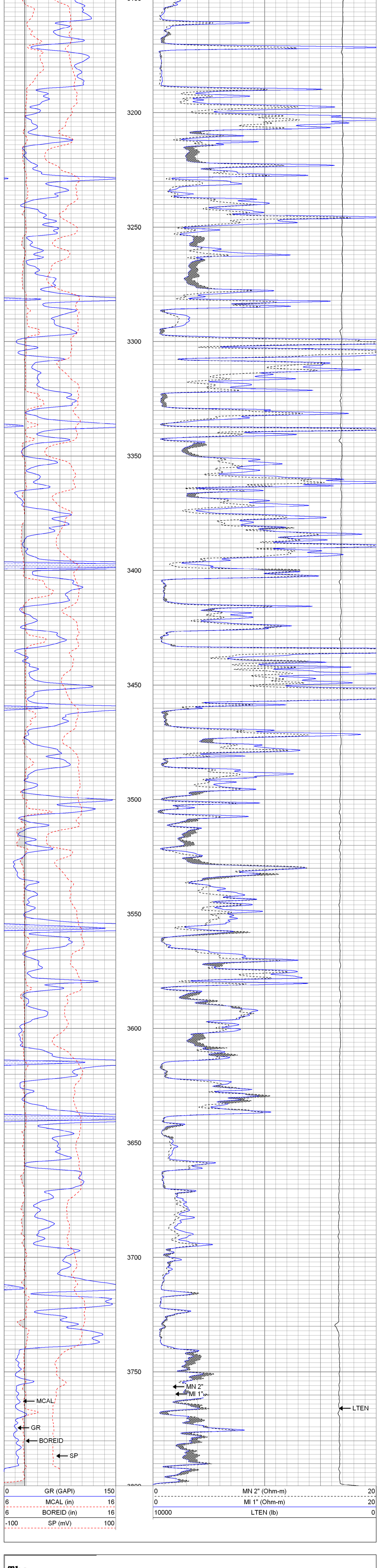
Comments

Thanks for using The Perforators LLC Hays, KS. (785-621-4604)

**The Perforators LLC** Main Pass

Database File: mehamel1aoh.db  
 Dataset Pathname: pass4  
 Presentation Format: kml  
 Dataset Creation: Tue Sep 18 04:12:23 2012 by Log Open-Cased 100827  
 Charted by: Depth in Feet scaled 1:240

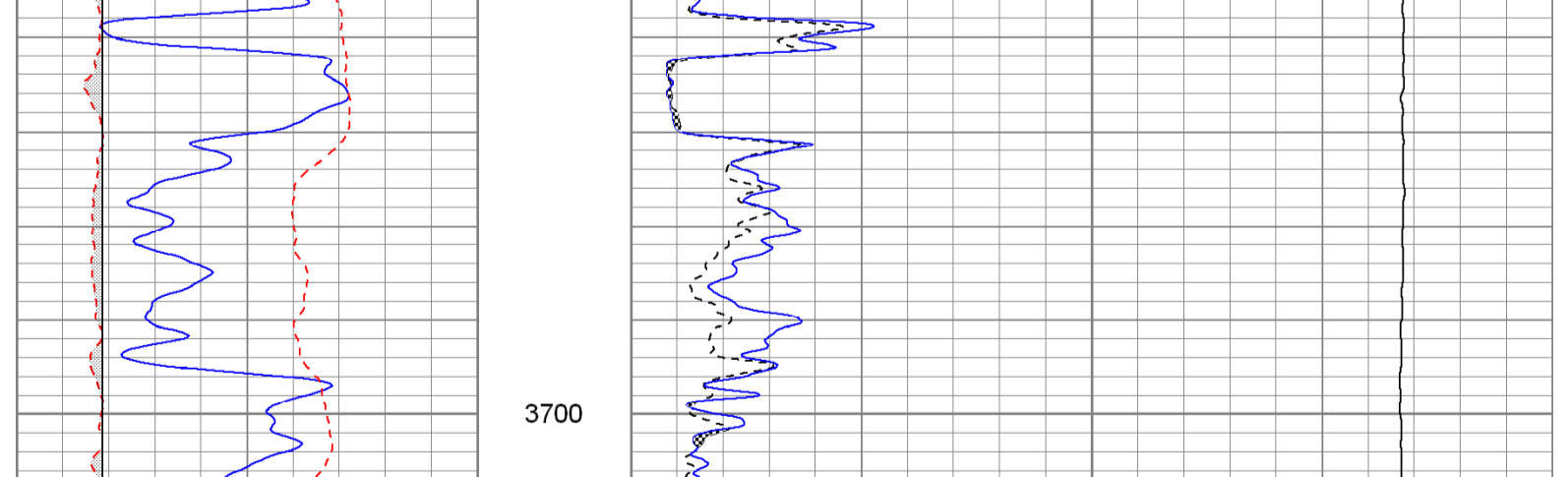
0	GR (GAPI)	150	0	MN 2" (Ohm-m)	20
6	MCAL (in)	16	0	MI 1" (Ohm-m)	20
6	BOREID (in)	16	10000	LTEN (lb)	0
-100	SP (mV)	100			



**The Perforators LLC** Repeat Pass

Database File: mehamel1aoh.db  
 Dataset Pathname: pass3.1  
 Presentation Format: kml  
 Dataset Creation: Tue Sep 18 04:17:13 2012 by Calc Open-Cased 100827  
 Charted by: Depth in Feet scaled 1:240

0	GR (GAPI)	150	0	MN 2" (Ohm-m)	20
6	MCAL (in)	16	0	MI 1" (Ohm-m)	20
6	BOREID (in)	16	10000	LTEN (lb)	0
-100	SP (mV)	100			



Calibration Report

Database File: mehamel1aoh.db  
 Dataset Pathname: pass3.1  
 Dataset Creation: Tue Sep 18 04:17:13 2012 by Calc Open-Cased 100827

Microlog Calibration Report

Serial-Model:	012-Pengo
Performed:	Tue Sep 18 04:01:09 2012

	Readings		References		Results			
	Zero	Cal	Zero	Cal	m	b		
Normal	0.0032	0.4326	V	0.0000	10.0000	Ohm-m	23.2921	-0.0751
Inverse	0.0036	0.5585	V	0.0000	7.5000	Ohm-m	13.5153	-0.0487
Caliper	3.2460	6.8378	V	8.7000	15.0000	in	1.7540	3.0067

Gamma Ray Calibration Report

Serial Number:	2001
Tool Model:	OH
Performed:	Wed Aug 29 08:26:23 2012
Calibrator Value:	1.0 GAPI
Background Reading:	0.0 cps
Calibrator Reading:	1.0 cps
Sensitivity:	0.2300 GAPI/cps

Sensor	Offset (ft)	Schematic	Description	Len (ft)	OD (in)	Wt (lb)
GR	8.13		GR-OH (2001) 2001	3.56	3.25	40.00
MN	1.30		ML-Pengo (012)	6.96	3.50	100.00
MI	1.30					
MCAL	1.30					

Dataset: mehamel1aoh.db; field/well/run/1/pass3.1  
 Total Length: 10.53 ft  
 Total Weight: 140.00 lb  
 O.D.: 3.50 in