

Company Meridian Energy Inc.

Well Hamel 1-A

Field Lynd

County Rooks

State Kansas

Location: 330° FSL & 405° FNL

API #: 15 163 24029

SEC 33 TWP 9S RGE 19W

Permanent Datum Ground Level Elevation 2211'

Log Measured From KB 7' AGL

Drilling Measured From KB

Date 9-18-12

Depth Driller 3800

Curve Definitions

SW Water Saturation

Rwa Apparent Water Resistivity

VSH Shale Volume

PHIE Effective Porosity

K Permeability

BVW Bulk Volume Water

Pay If PHIE > 7%, VSH < 50%, SW < 50%, DCAL < 10"

Recorded By L Smith

Witnessed By Mr. Neal Larson

<<< Fold Here >>>

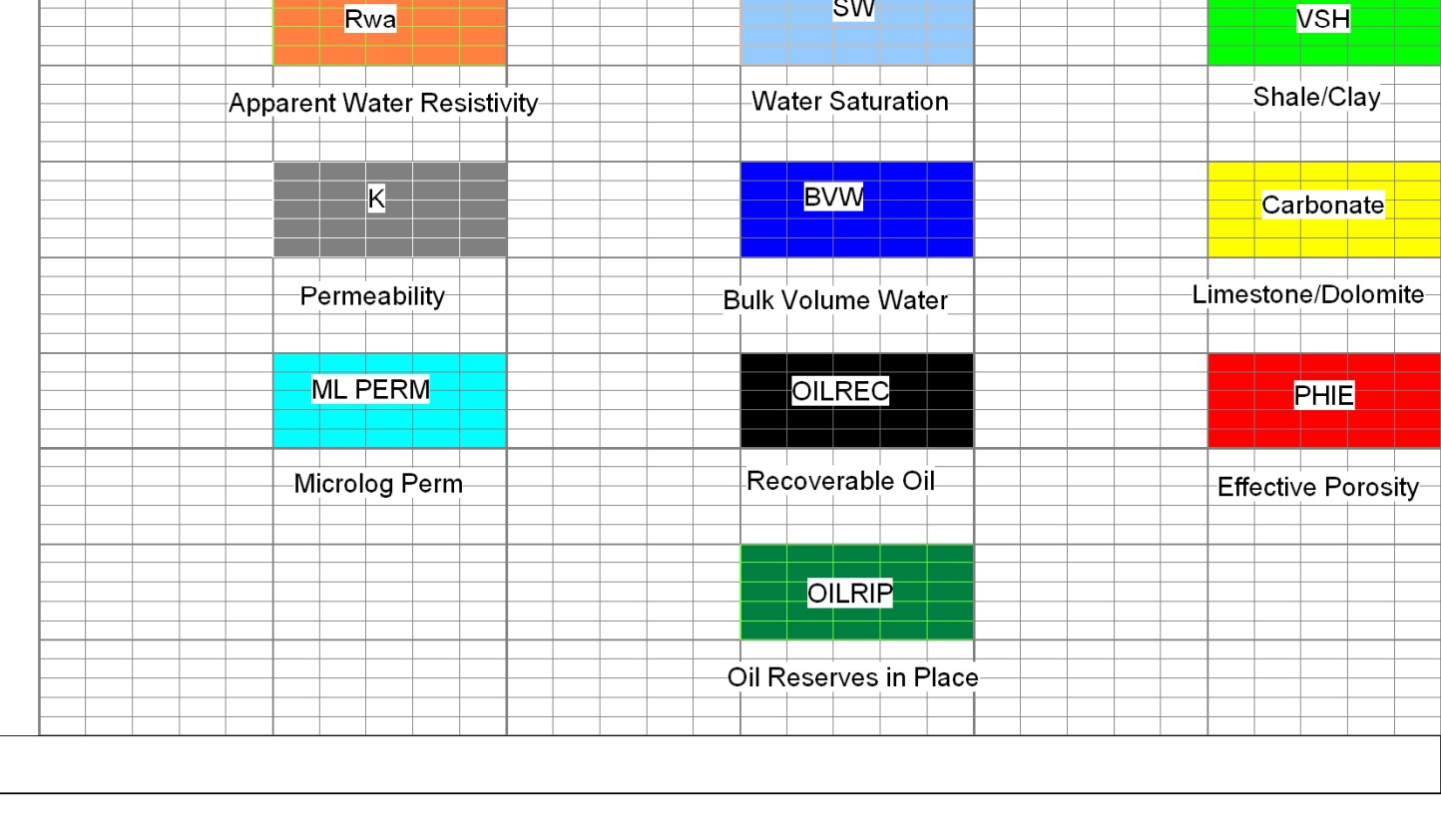
All interpretations are opinions based on inferences from electrical or other measurements and we cannot and do not guarantee the accuracy or correctness of any interpretation, and we shall not, except in the case of gross or willful negligence on our part, be liable or responsible for any loss, costs, damages, or expenses incurred or sustained by anyone resulting from any interpretation made by any of our officers, agents or employees. These interpretations are also subject to our general terms and conditions set out in our current Price Schedule.

Comments

Thank you for using The Perforators LLC
Hays, KS (785) 621-4604

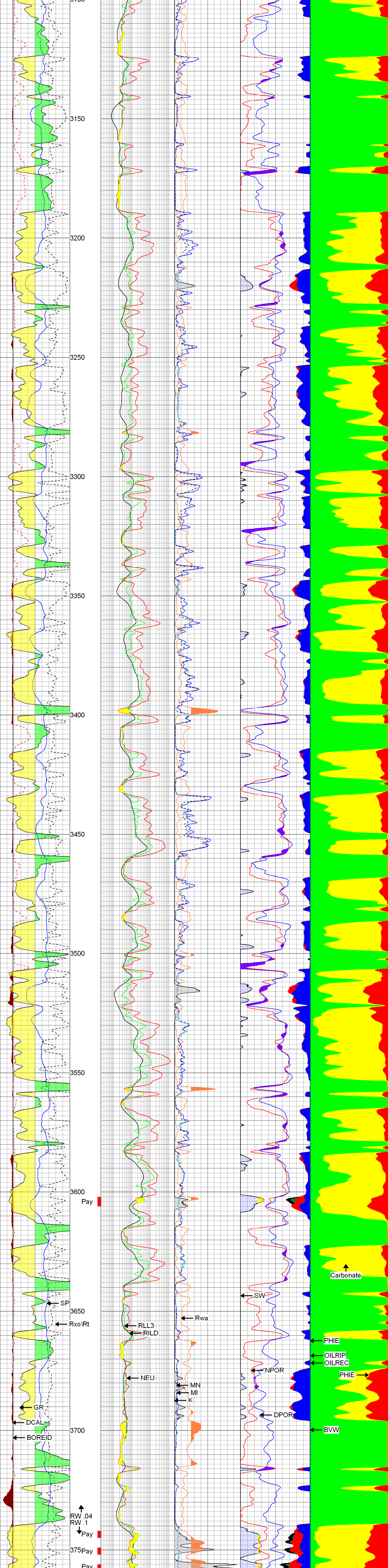
Main Pass

Database File: gcolorchart.db
Dataset Pathname: pass3.1
Presentation Format: color
Dataset Creation: Wed Nov 17 10:09:46 2010
Charted by:



Database File: mehame11aoh.db
Dataset Pathname: oh2
Presentation Format: kohcgi
Dataset Creation: Wed Sep 19 07:46:29 2012
Charted by:

0 GR (GAPI) 150	RILD	0 MI (Ohm-m) 60	100 SW (%) -100	0 VSH (%) 100
-100 SP (mV) 100	0.2 (Ohm-m) 2000	0 MN (Ohm-m) 60	50 PHIE (%) 0	50 PHIE (%) 0
6 DCAL (in) 16	RLL3	0 Rwa (Ohm-m) 1	50 BVW (%) 0	
6 BOREID (in) 16	0.2 (Ohm-m) 2000	0 K 5	30 NPOR (pu) -10	
140 Rxo/Rt -60	0 NEU (NAPI) 700		30 DPOR (pu) -10	
			2000OILREC (bbl) 0	
			8000OILRIP (bbl) 0	



0 GR (GAPI) 150	RILD	0 MI (Ohm-m) 60	100 SW (%) -100	0 VSH (%) 100
-100 SP (mV) 100	0.2 (Ohm-m) 2000	0 MN (Ohm-m) 60	50 PHIE (%) 0	50 PHIE (%) 0
6 DCAL (in) 16	RLL3	0 Rwa (Ohm-m) 1	50 BVW (%) 0	
6 BOREID (in) 16	0.2 (Ohm-m) 2000	0 K 5	30 NPOR (pu) -10	
140 Rxo/Rt -60	0 NEU (NAPI) 700		30 DPOR (pu) -10	
			2000OILREC (bbl) 0	
			8000OILRIP (bbl) 0	