



CHANUTE, KANSAS

**GAMMA RAY
NEUTRON
COMPLETION LOG**

Company	McFADDEN OIL COMPANY	Location:	APR #: 15-001-30510-00-00	Other Services
Well	McCALL/LOVE #5AX	1470' FSL & 3280' FEL		
Field	MORAN	SEC 36 TWP 24S RGE 20E		
County	ALLEN	SW SE NE SW		
State	KANSAS	Elevation	1101' EST	Elevation
Company	McFADDEN OIL COMPANY	Permanent Datum	GL	GL
Well	McCALL/LOVE #5AX	Log Measured From	GL	GL
Field	MORAN	Drilling Measured From	GL	GL
County	ALLEN	Date	11-21-12	
State	KANSAS	Run Number	1NW	
		Depth Driller		
		Depth Logger	847' 4"	
		Top Log Interval	0	
		Bottom Logged Interval	847' 4"	
		Fluid Level	FULL	
		Production Casing	WATER	
		Type Fluid		
		Max. Recorded Temp.	2.78°	TD
		Estimated Cement Top		
		Calculated Cement Top		
		Amount & Type Cement		
		Drilling Contractor		
		Equipment Number	109	
		Location	HALL, R	
		Recorded By	McFADDEN, J	

<<< Fold Here >>>

All interpretations are opinions based on inferences from electrical or other measurements and we cannot and do not guarantee the accuracy or correctness of any interpretation, and we shall not, except in the case of gross or willful negligence on our part, be liable or responsible for any loss, costs, damages, or expenses incurred or sustained by anyone resulting from any interpretation made by any of our officers, agents or employees. These interpretations are also subject to our general terms and conditions set out in our current Price Schedule.

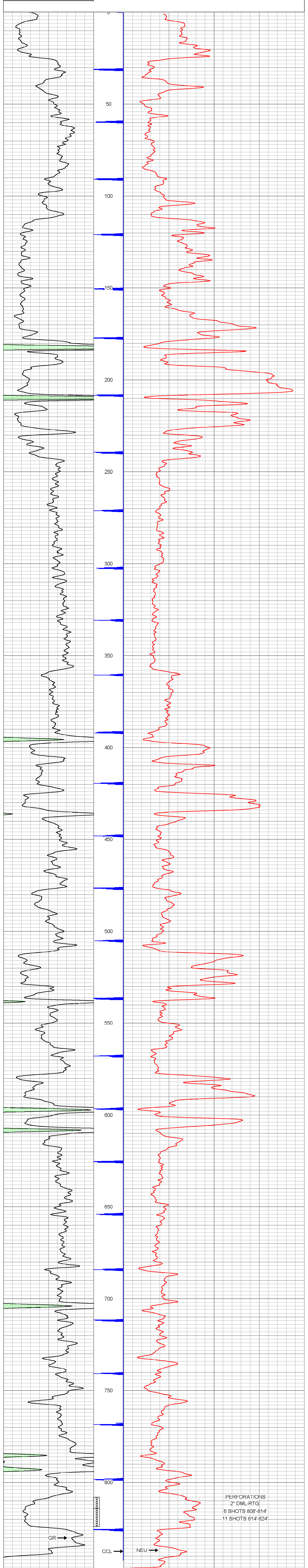
Comments

THANK YOU

Sensor	Offset (ft)	Schematic	Description	Len (ft)	OD (in)	Wt (lb)
GR	7.59		GR-TITAN_169 (TIT169_001) Titan 1 11/16" Gamma Ray	4.75	1.69	20.00
CCL	5.05		CCL-TITAN_169 (TIT169) Titan 1 11/16" Logging CCL	1.83	1.69	7.50
NEU	0.63		NEU-TITAN (TIT801) TITAN 1 11/16" Neutron	4.33	1.69	25.00

Dataset: mccall love #5 ax.db: field/well/run1/pass1
 Total Length: 10.92 ft
 Total Weight: 52.50 lb
 O.D. 1.69 in

Database File: g:\mccall love #5 ax.db
 Dataset Pathname: pass1
 Presentation Format: gr-n-ccl
 Dataset Creation: Wed Nov 21 11:24:04 2012 by Log Std Casedhole 09061
 Charted by: Depth in Feet scaled 1.240



PERFORATIONS
 2" DML-RTG
 6 SHOTS 808'-814'
 11 SHOTS 814'-824'