



CHANUTE, KANSAS

**GAMMA RAY  
NEUTRON  
COMPLETION LOG**

Company	McFADDEN OIL COMPANY	Company	McFADDEN OIL COMPANY
Well	McCALL/LOVE #14AO	Well	McCALL/LOVE #14AO
Field	MORAN	Field	MORAN
County	ALLEN	County	ALLEN
State	KANSAS	State	KANSAS
Location:	21201 FSL & 33351 FEL SE NW/NE SW	Location:	API #: 15-001-30556-00-00
Perment Datum	SEC 36 TWP 24S RGE 20E	Perment Datum	SEC 36 TWP 24S RGE 20E
Log Measured From	GL	Log Measured From	GL
Drilling Measured From	GL	Drilling Measured From	GL
Date	11-21-12	Date	11-21-12
Run Number	1NW	Run Number	1NW
Depth Logger	842.6'	Depth Logger	842.6'
Top Log Interval	9	Top Log Interval	9
Bottom Logged Interval	842.6'	Bottom Logged Interval	842.6'
Fluid Level	FULL	Fluid Level	FULL
Type Fluid	WATER	Type Fluid	WATER
Production Casing	2 7/8" @ TD	Production Casing	2 7/8" @ TD
Max. Recorded Temp		Max. Recorded Temp	
Estimated Cement Top		Estimated Cement Top	
Calculated Cement Top		Calculated Cement Top	
Amount & Type Cement		Amount & Type Cement	
Drilling Contractor	109	Drilling Contractor	109
Equipment Number		Equipment Number	
Location	HALL, R	Location	HALL, R
Recorded By	McFADDEN, J	Recorded By	McFADDEN, J
Witnessed By		Witnessed By	

<<< Fold Here >>>

All interpretations are opinions based on inferences from electrical or other measurements and we cannot and do not guarantee the accuracy or correctness of any interpretation, and we shall not, except in the case of gross or willful negligence on our part, be liable or responsible for any loss, costs, damages, or expenses incurred or sustained by anyone resulting from any interpretation made by any of our officers, agents or employees. These interpretations are also subject to our general terms and conditions set out in our current Price Schedule.

Comments

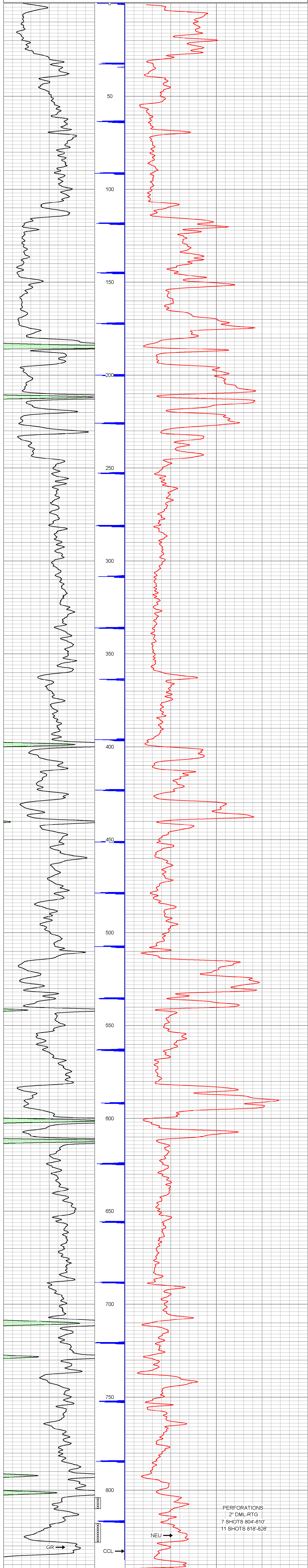
THANK YOU

Sensor	Offset (ft)	Schematic	Description	Len (ft)	OD (in)	Wt (lb)
GR	7.59		GR-TITAN 169 (TIT169_001) Titan 1 11/16" Gamma Ray	4.75	1.69	20.00
CCL	5.05		CCL-TITAN 169 (TIT169) Titan 1 11/16" Logging CCL	1.83	1.69	7.50
NEU	0.63		NEU-TITAN (TIT801) TITAN 1 11/16" Neutron	4.33	1.69	25.00

Dataset: mccall love #14 ao.db: field/well/run1/pass1  
 Total Length: 10.92 ft  
 Total Weight: 52.50 lb  
 O.D.: 1.69 in

Database File: g:\mccall love #14 ao.db  
 Dataset Pathname: pass1  
 Presentation Format: gr-n-ccl  
 Dataset Creation: VWed Nov 21 12:39:05 2012 by Log Std Casedhole 09061  
 Charted by: Depth in Feet scaled 1.240

150 gr 300 3 CCL0.05 100 NEU (cps) 1500  
 0 GR 150



PERFORATIONS  
 2" DML-RTG  
 7 SHOTS 804'-810'  
 11 SHOTS 818'-828'

Company	McFADDEN OIL COMPANY
Well	McCALL/LOVE #14AO
Field	MORAN
County	ALLEN SEC 36 TWP 24S RGE 20E
State	KANSAS
Date	11-21-12

