



Pioneer Energy Services

Sonic Cement  
Bond Log

15-145-21685-00-00

Company **Bear Petroleum, Inc.**  
Well **Tombaugh Unit No. 1**  
Field **Wildcat**  
County **Pawnee** State **Kansas**

Location

230' FSL & 2440' FWL

Sec: 26 Twp: 20S Rge: 20W

Other Services  
Perforate

Permanent Datum Ground Level Elevation 2145  
Log Measured From Kelly Bushing 5 Ft. Above Perm. Datum  
Drilling Measured From Kelly Bushing

Elevation  
K.B. 2150  
D.F. 2145  
G.L. 2145

Run Number	One	
Date Survey	12/11/2012	
Date Cementing	9/8/2012	
Type Cementing Operation	Primary	
Depth Driller	4280	
Depth Logger	4252	
Logged Interval	4250 to 2950	to
Casing Driller	4.5 @ T.D.	@
Float Collar -- D.V. Tool		
Squeeze Depth		
Amount & Type Cement		
Amount & Type Admix		
Type Fluid In Hole	Water	
Fluid Level	500	
Salinity PPM CL		
Weight lb/gal -- Vis.		
Approx. Logged Cement Top	3140	
Calculated Cement Top		
Max. Hole Temperature	119	
Tool No.	R-1	
Spacing Recorded	3-5	
Equipment -- Location	72	Hays
Recorded By	K. Ladrigan	
Witnessed By	Ozzie Vanausdale	

<<< Fold Here >>>

All interpretations are opinions based on inferences from electrical or other measurements and we cannot and do not guarantee the accuracy or correctness of any interpretation, and we shall not, except in the case of gross or willful negligence on our part, be liable or responsible for any loss, costs, damages, or expenses incurred or sustained by anyone resulting from any interpretation made by any of our officers, agents or employees. These interpretations are also subject to our general terms and conditions set out in our current Price Schedule.

Comments

Thank you for using Pioneer Energy Services, Inc. 785.625.3858

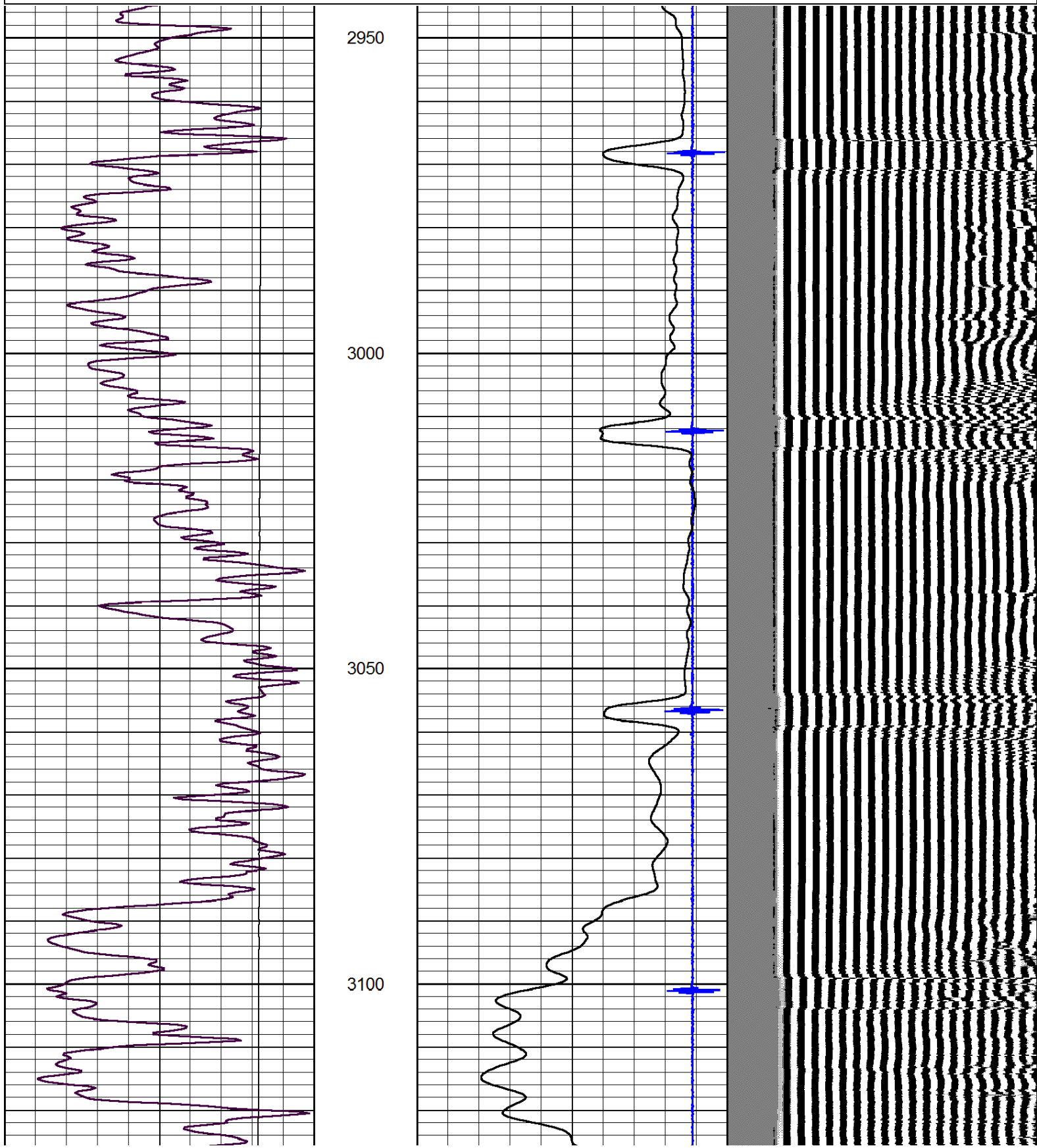
Alexanddr KS., 13 South to U Road, 2.5 East  
North Into.

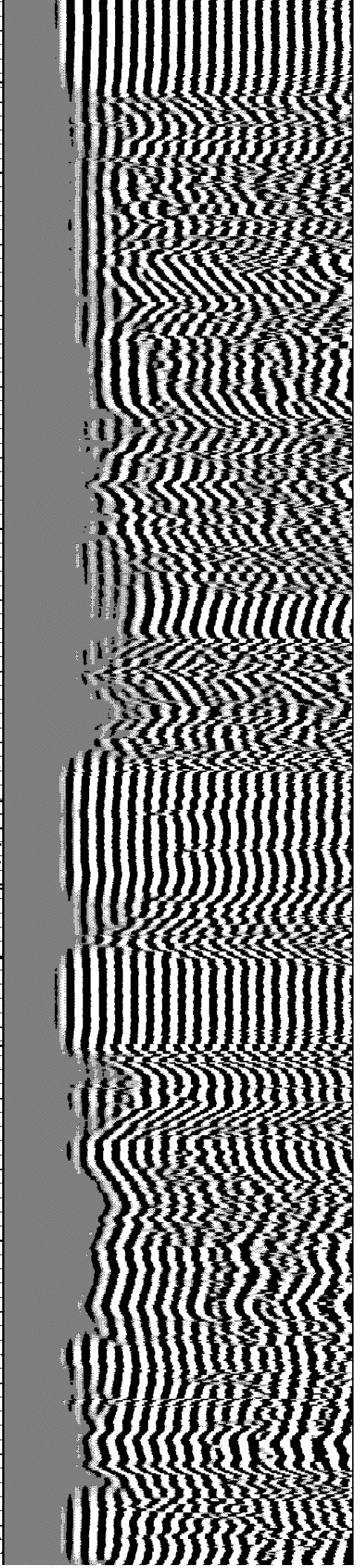
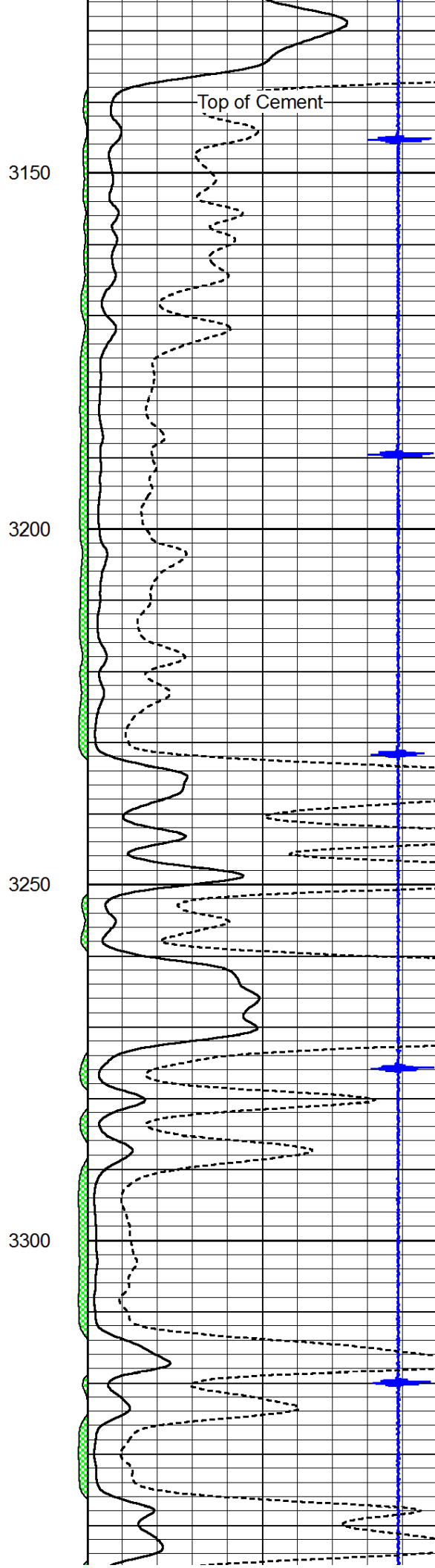
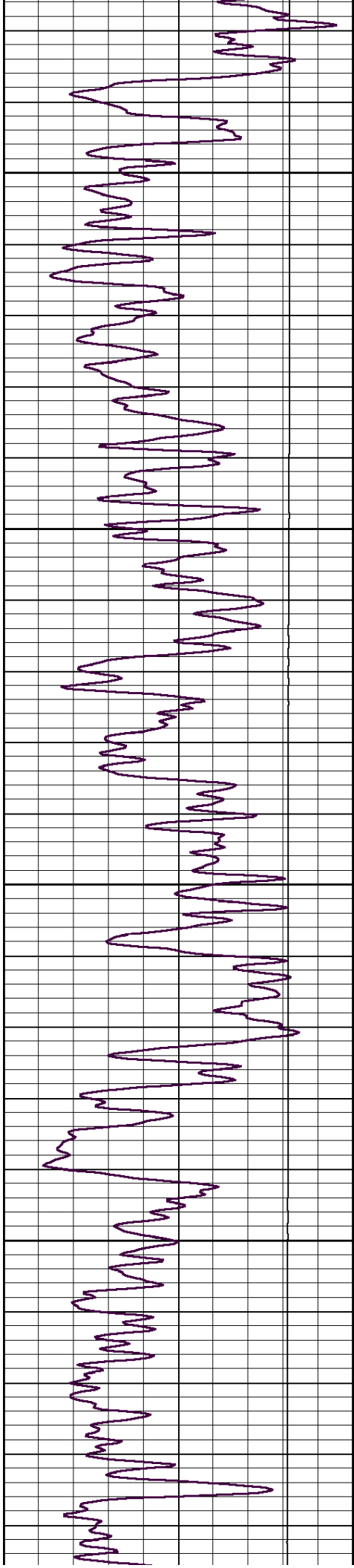


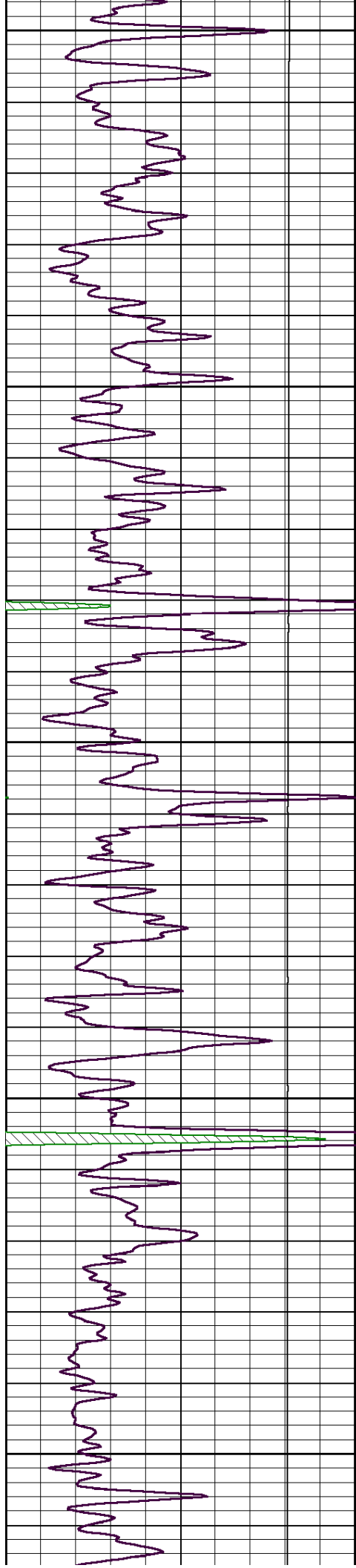
Main Pass

Database File: carmenschmitt\_tombaugh1.db  
Dataset Pathname: Tombaugh1/sgrcbl/pass5  
Presentation Format: cbldr  
Dataset Creation: Tue Dec 11 14:44:39 2012 by Log SCH 111116  
Charted by: Depth in Feet scaled 1:240

0	Gamma Ray	150	amp3ft	8	Casing Collars	-1	200	wvf5ft	1200
			(mV)	0	Amplified Amplitude (mV)	100			
			-100 10	0	Pipe Amplitude (mV)	20			







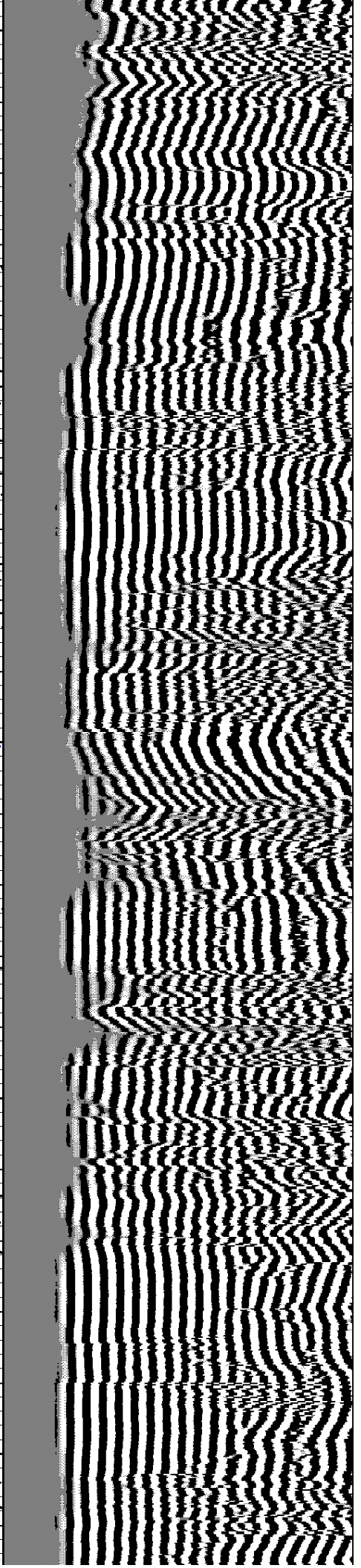
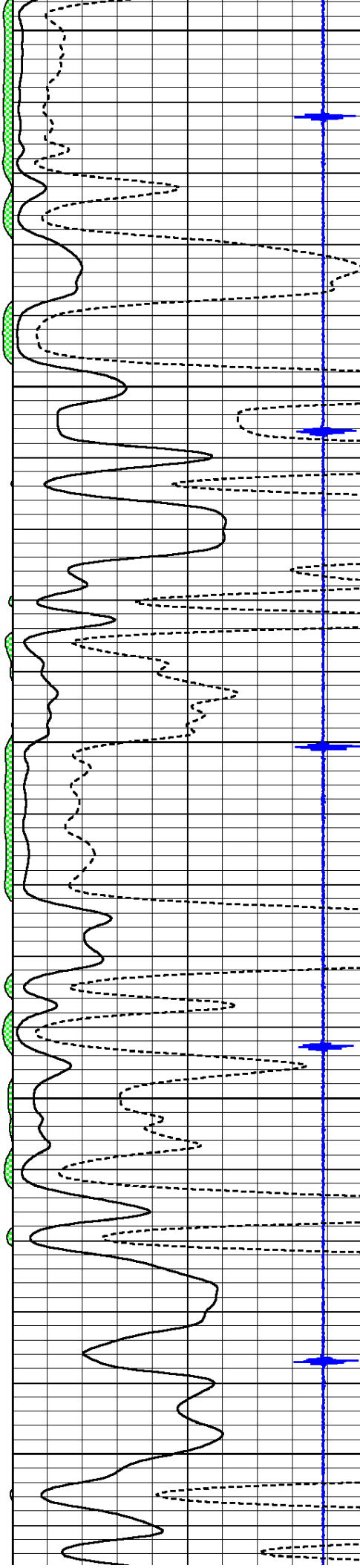
3350

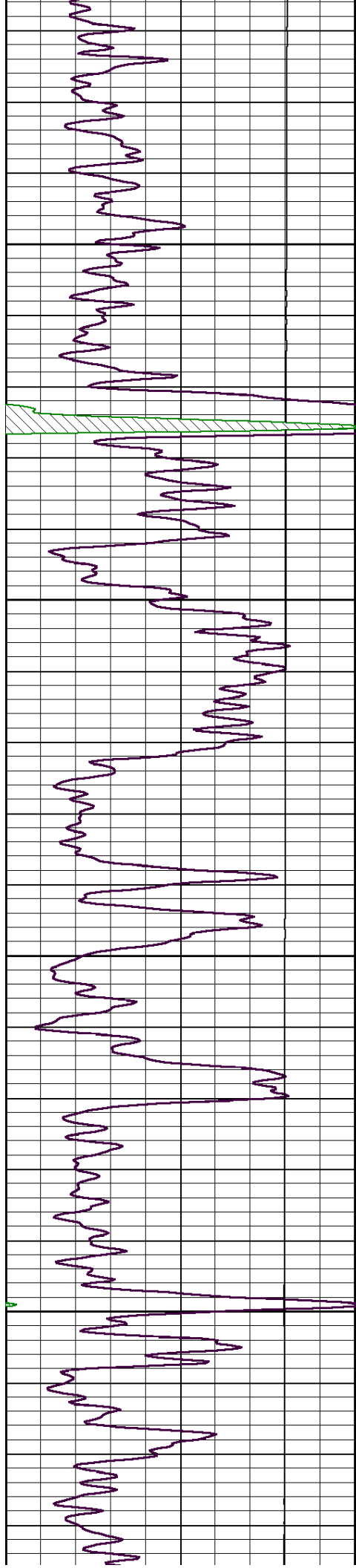
3400

3450

3500

3550



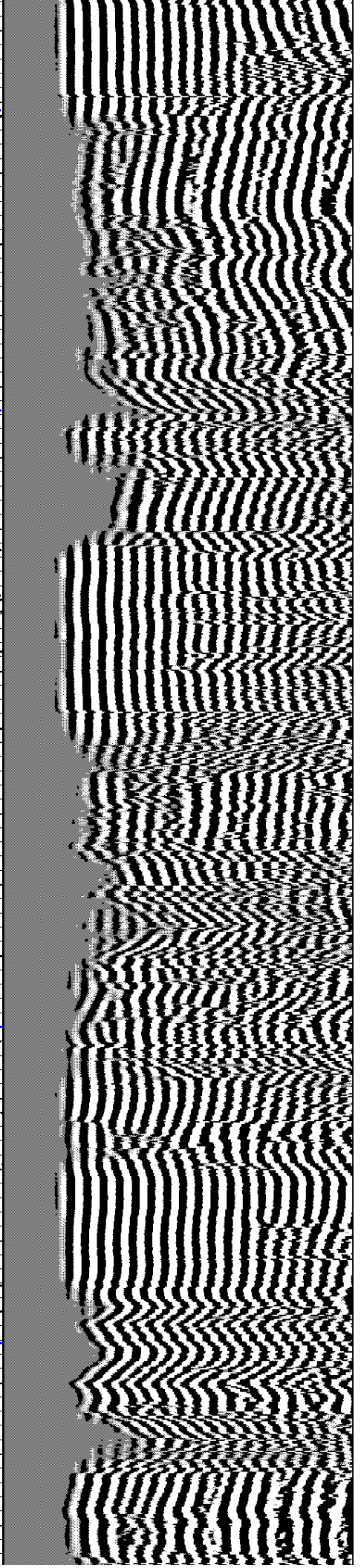
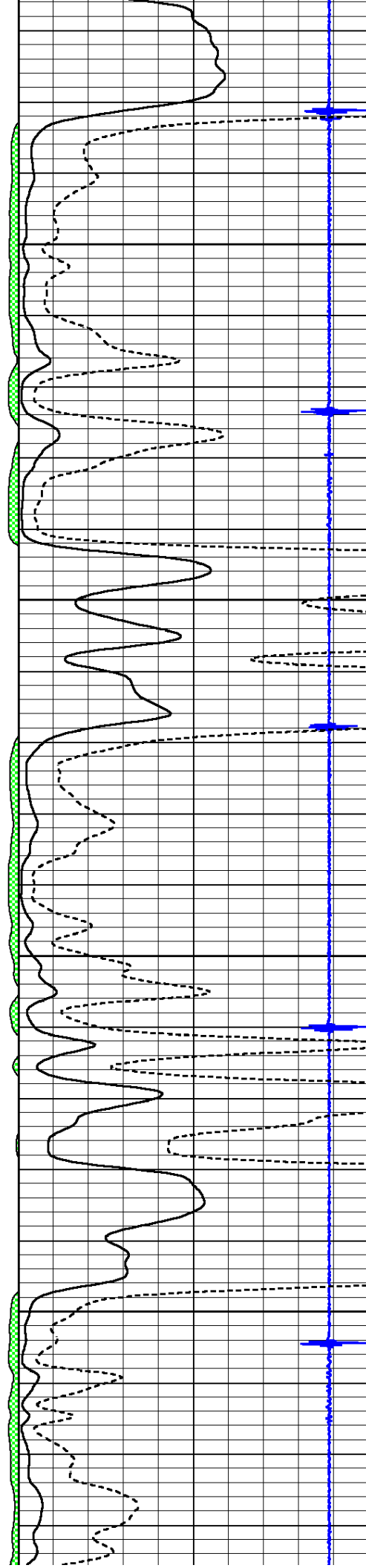


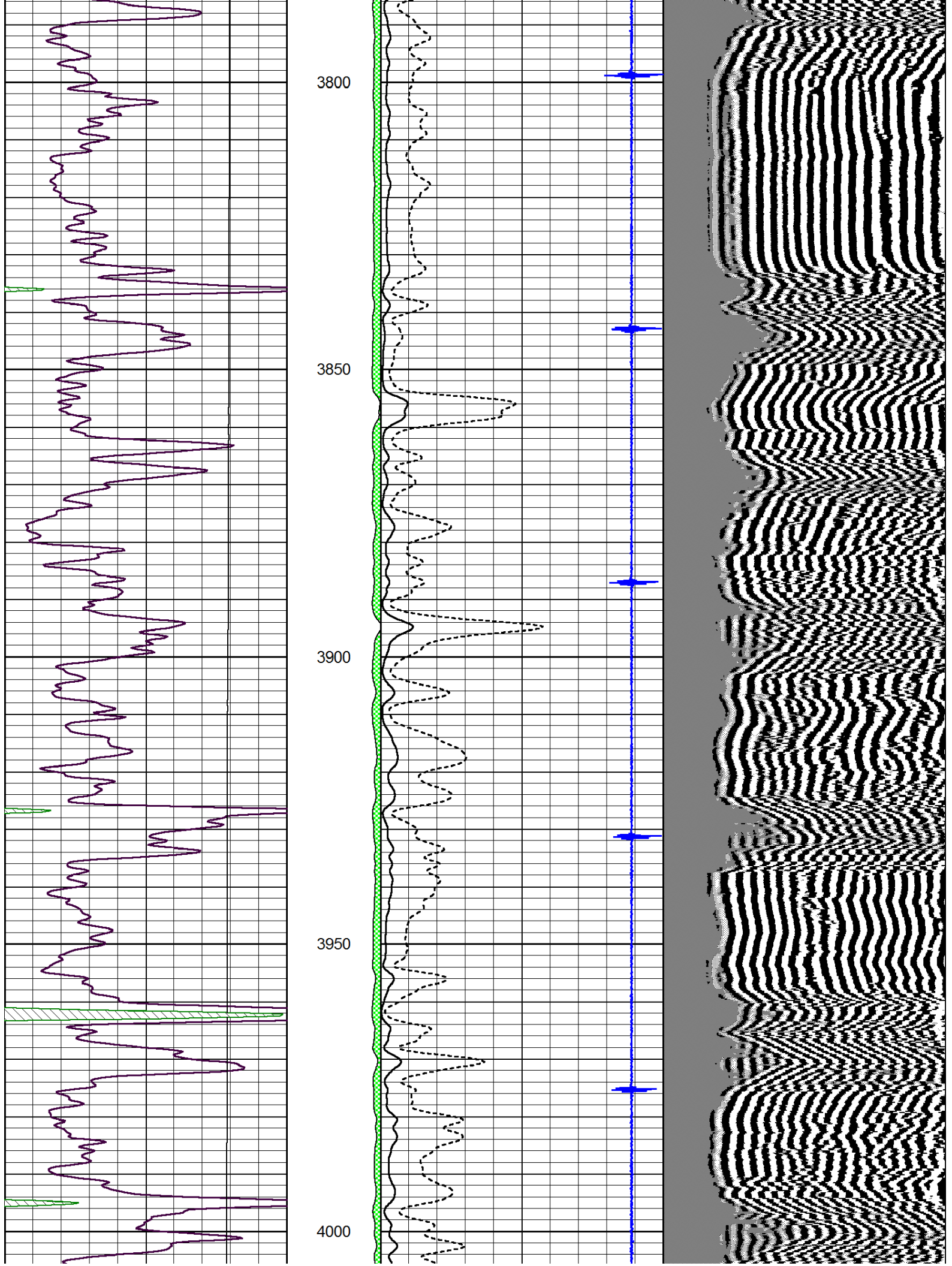
3600

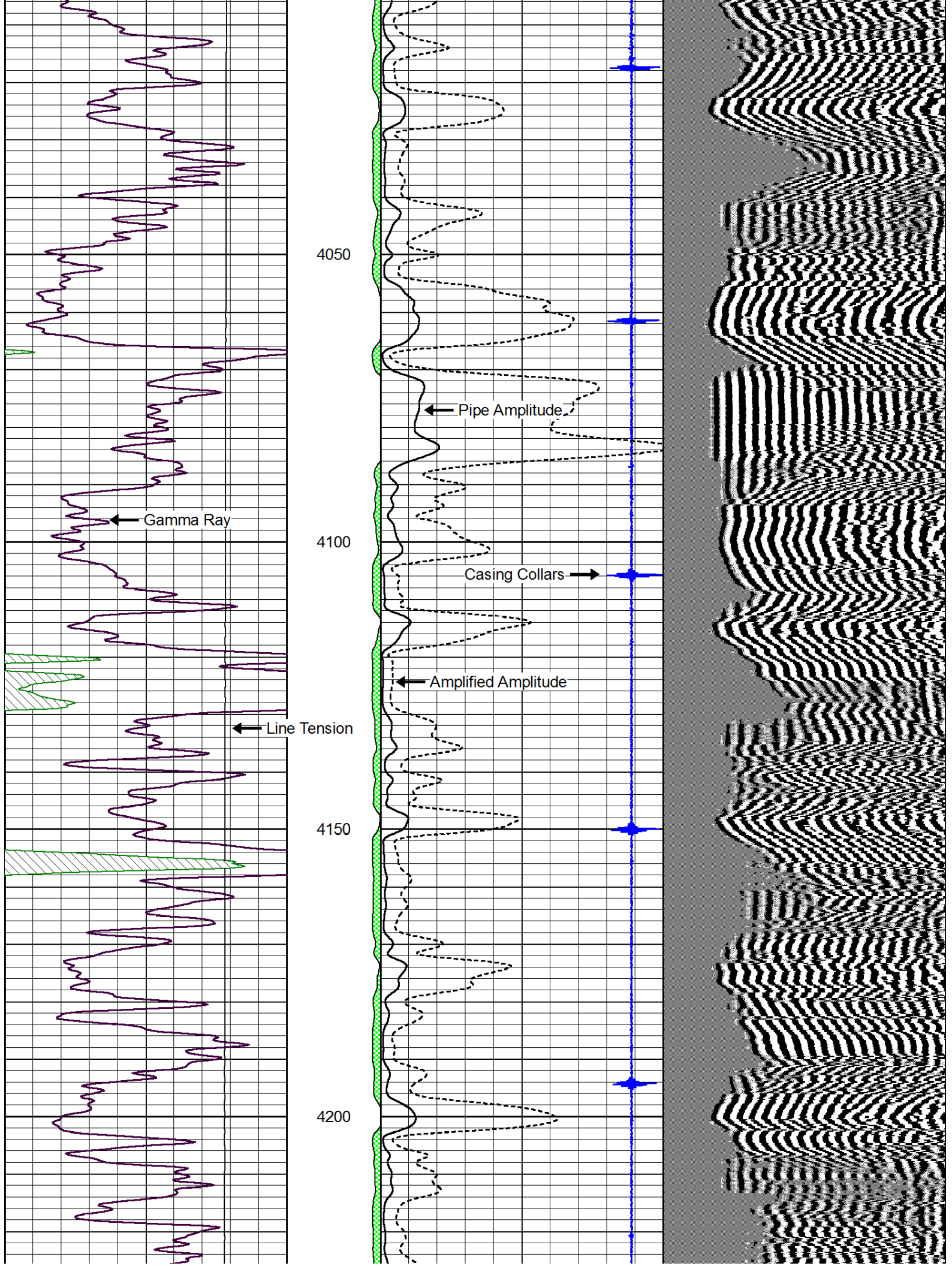
3650

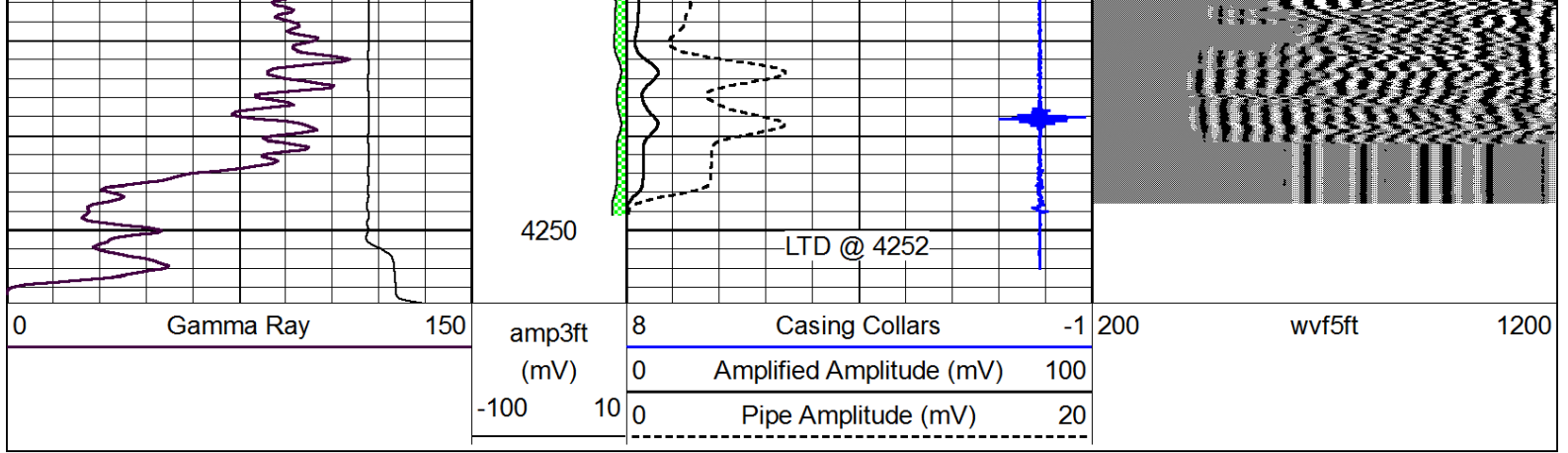
3700

3750









Pioneer Energy Services

# Repeat Section

Database File: carmenschmitt\_tombaugh1.db  
 Dataset Pathname: Tombaugh1/sgrcbl/pass4  
 Presentation Format: cbldr  
 Dataset Creation: Tue Dec 11 14:40:25 2012 by Log SCH 111116  
 Charted by: Depth in Feet scaled 1:240

