



(785) 625-3858

Sonic Cement
Bond Log

15-171-20883-00-00

Company Shakespeare Oil Company, Inc.

Well Carson No. 1-25

Field Wildcat

County Scott

State Kansas

Location

1540' FNL & 1130' FWL

Other Services
Perforate

Sec: 25 Twp: 16S Rge: 34W

Elevation

Permanent Datum Ground Level Elevation 3104

Log Measured From Kelly Bushing 10 Ft. Above Perm. Datum

K.B. 3114
D.F. 3112
G.L. 3104

Drilling Measured From Kelly Bushing

Run Number

One

Date Survey 8/14/2012

Date Cementing 6/5/2012

Type Cementing Operation Primary

Depth Driller 4880

Depth Logger 2500

Logged Interval 2500 to 0

Casing Driller 4.5 @ T.D.

Float Collar -- D.V. Tool 1111 @

Squeeze Depth 1111

Amount & Type Cement 1111

Amount & Type Admix 1111

Type Fluid In Hole Water

Fluid Level Full

Salinity PPM CL 1111

Weight lb/gal -- Vis. 1111

Approx. Logged Cement Top 1111

Calculated Cement Top 1111

Max. Hole Temperature 113

Tool No. D-1

Spacing Recorded 3-5

Equipment -- Location 72 Hays

Recorded By K. Ladrigan

Witnessed By Tom Larson

<<< Fold Here >>>

All interpretations are opinions based on inferences from electrical or other measurements and we cannot and do not guarantee the accuracy or correctness of any interpretation, and we shall not, except in the case of gross or willful negligence on our part, be liable or responsible for any loss, costs, damages, or expenses incurred or sustained by anyone resulting from any interpretation made by any of our officers, agents or employees. These interpretations are also subject to our general terms and conditions set out in our current Price Schedule.

Comments

Thank you for using Log-Tech (785) 625-3858

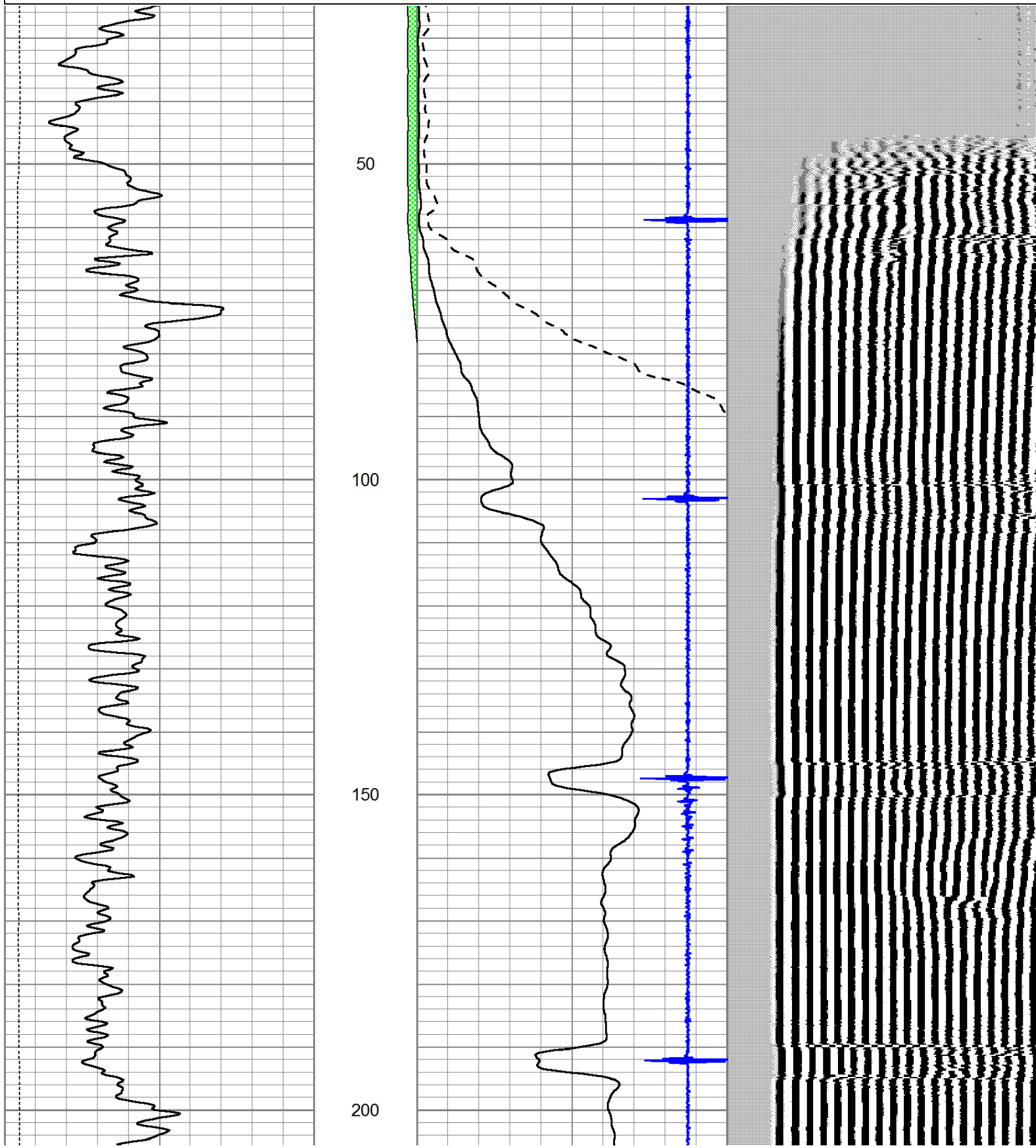
Pence, KS., 2 East to Eagle Road, 1.5 South
East Into.

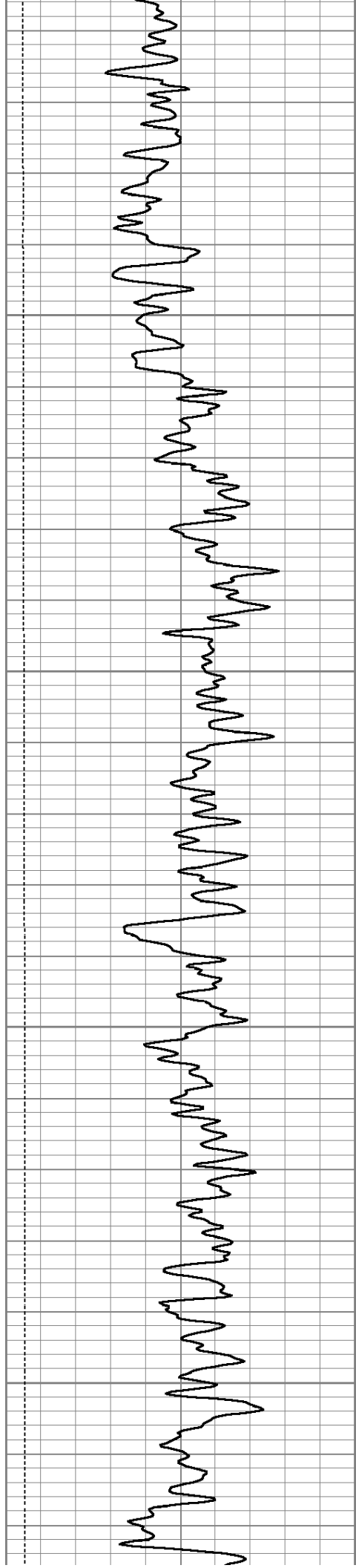


Main Pass

Database File: shake_carson1-25.db
 Dataset Pathname: Carson1-2/grcbltop/pass2
 Presentation Format: cldig
 Dataset Creation: Tue Aug 14 08:29:10 2012 by Log SCH 111116
 Charted by: Depth in Feet scaled 1:240

0	GR (GAPI)	150	AMP3	0	Amplitude (mV)	100	200	Variable Density	1200
0	LTEN (lb)	5000	(mV)	0	Amplified Amplitude (mV)	20			
			-100 10	7	Collar Locator	-1			



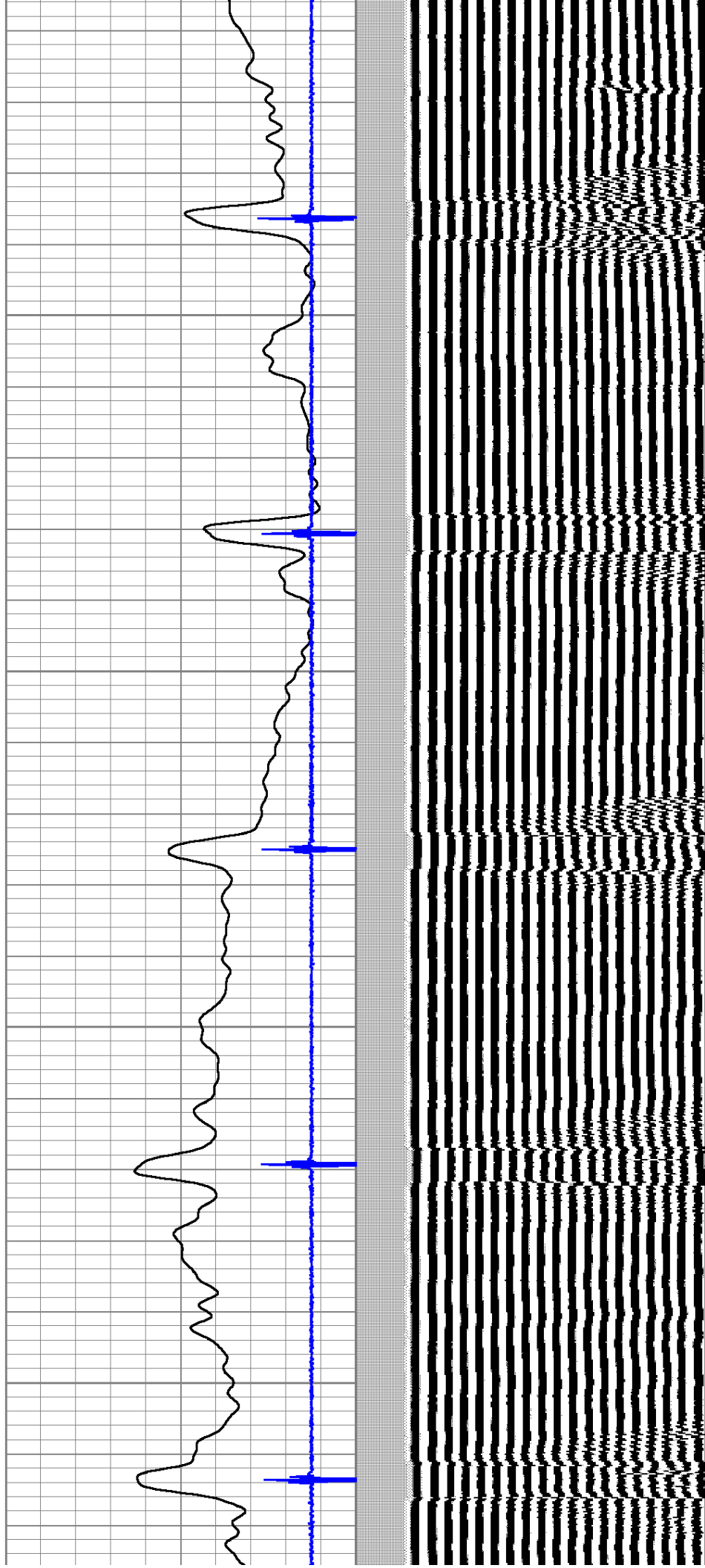


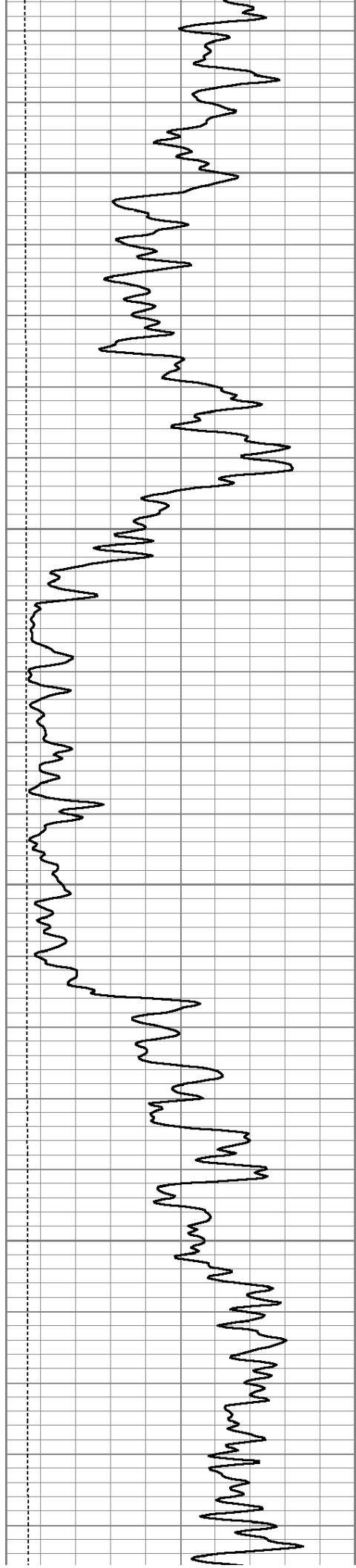
250

300

350

400



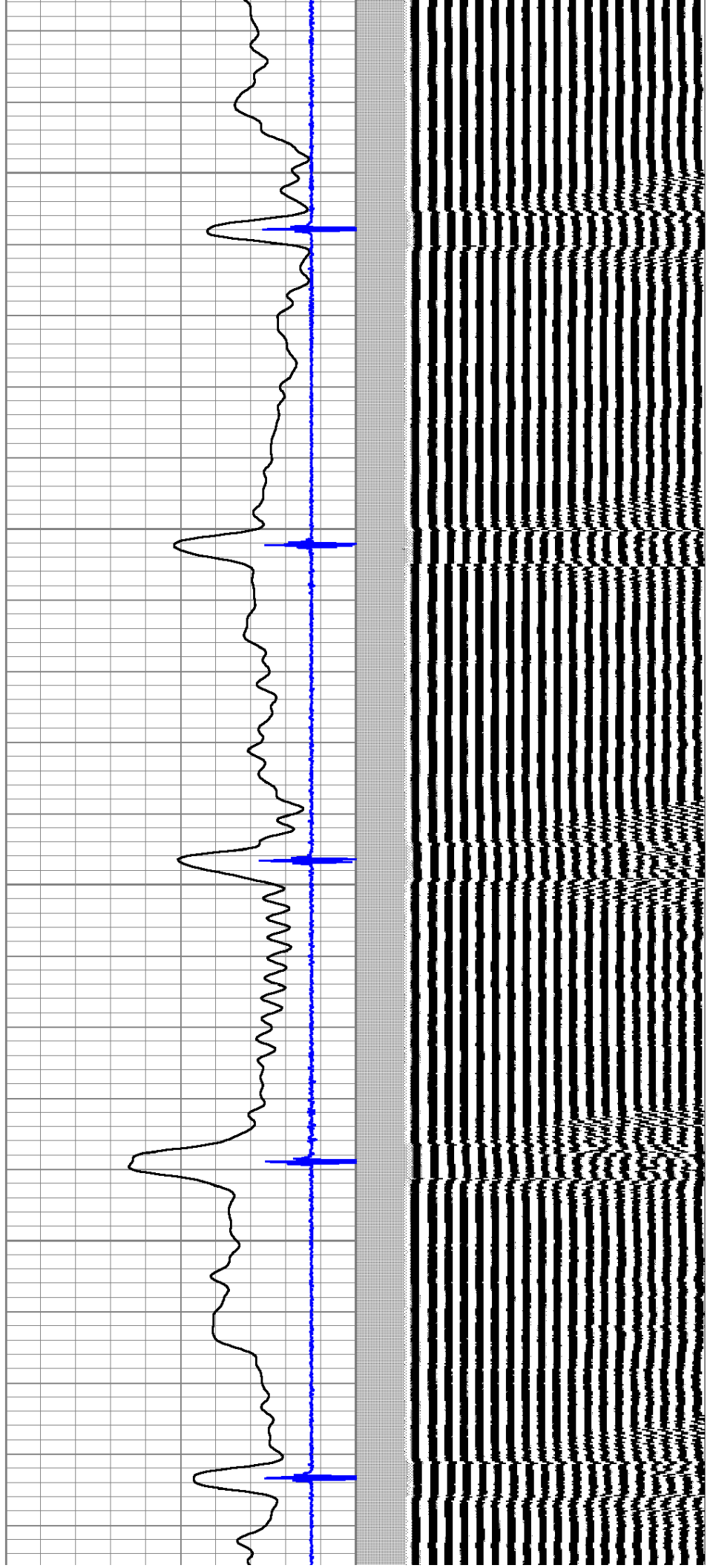


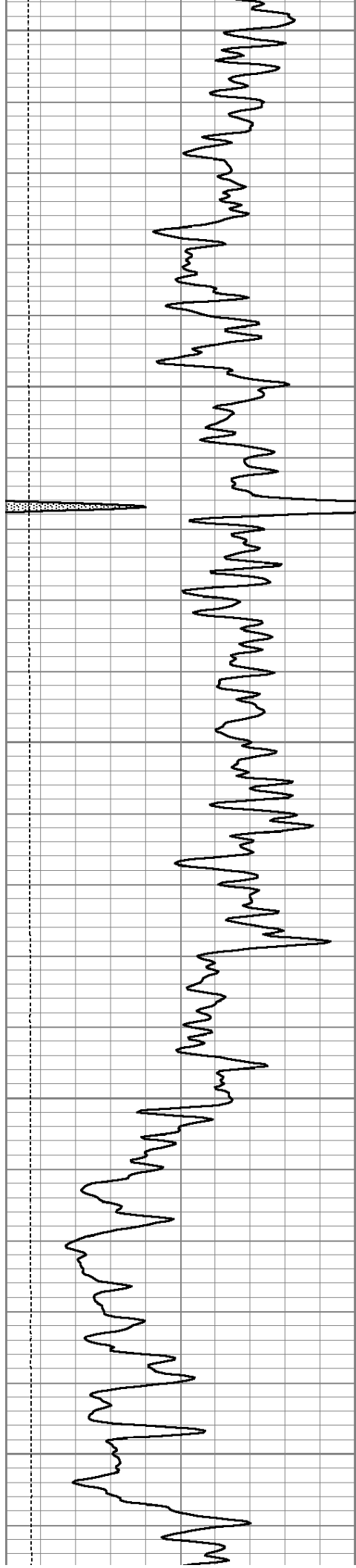
450

500

550

600





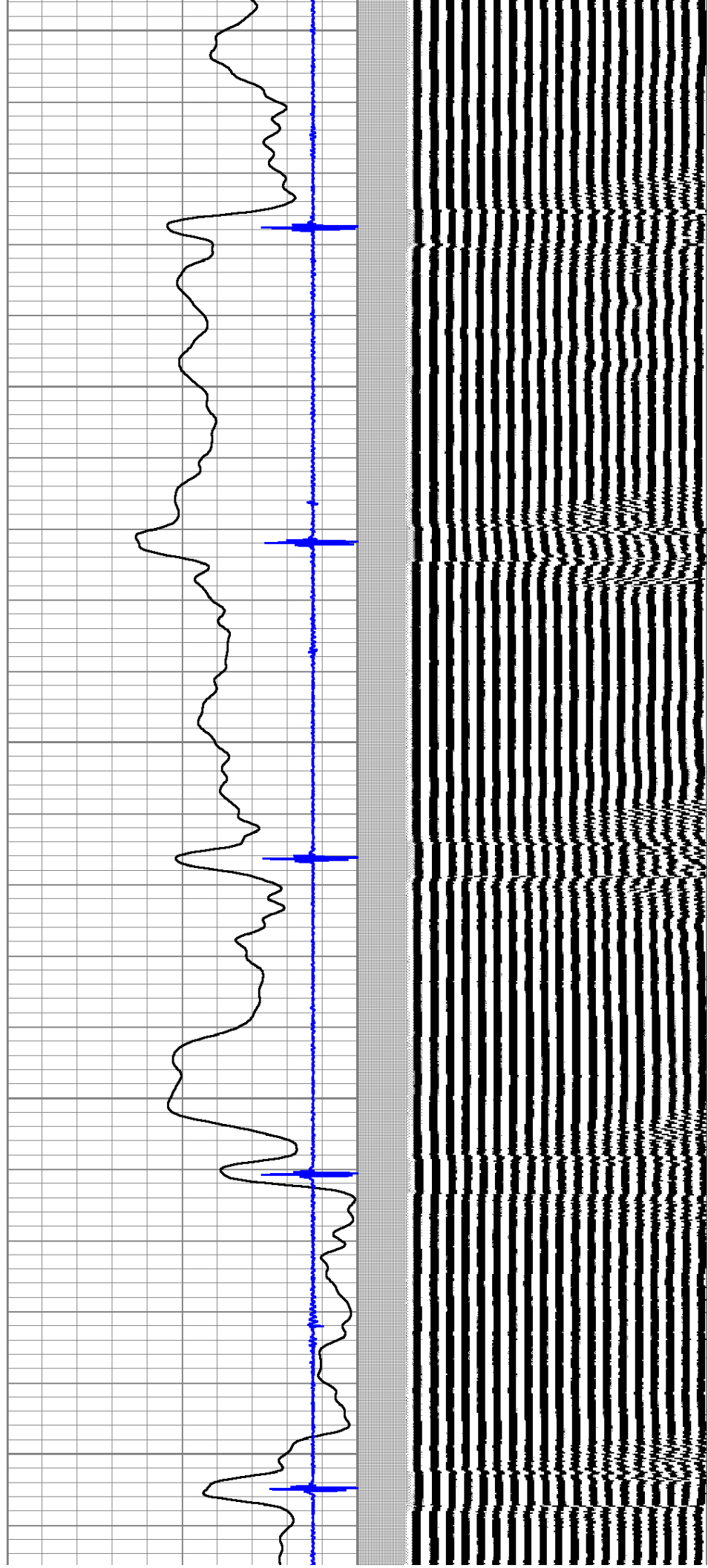
650

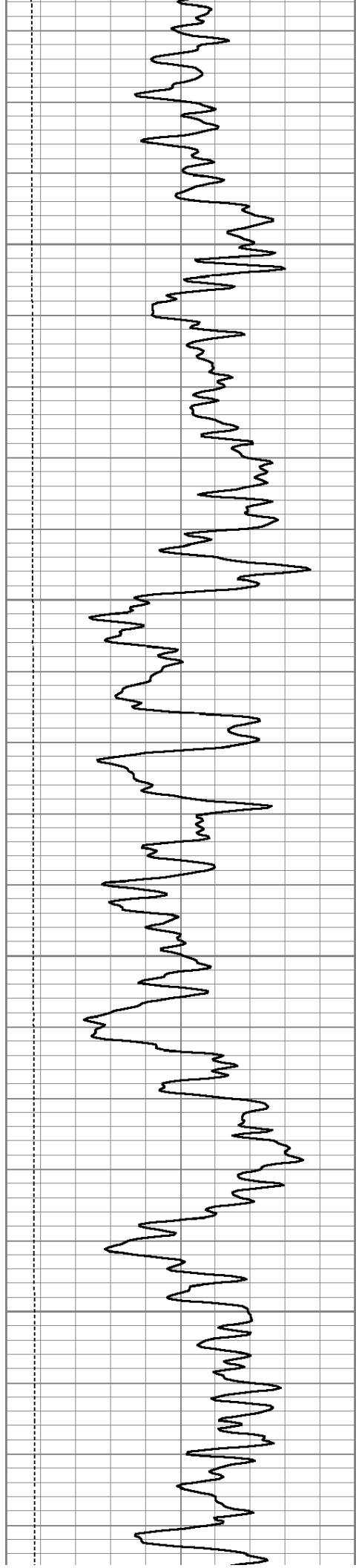
700

750

800

850



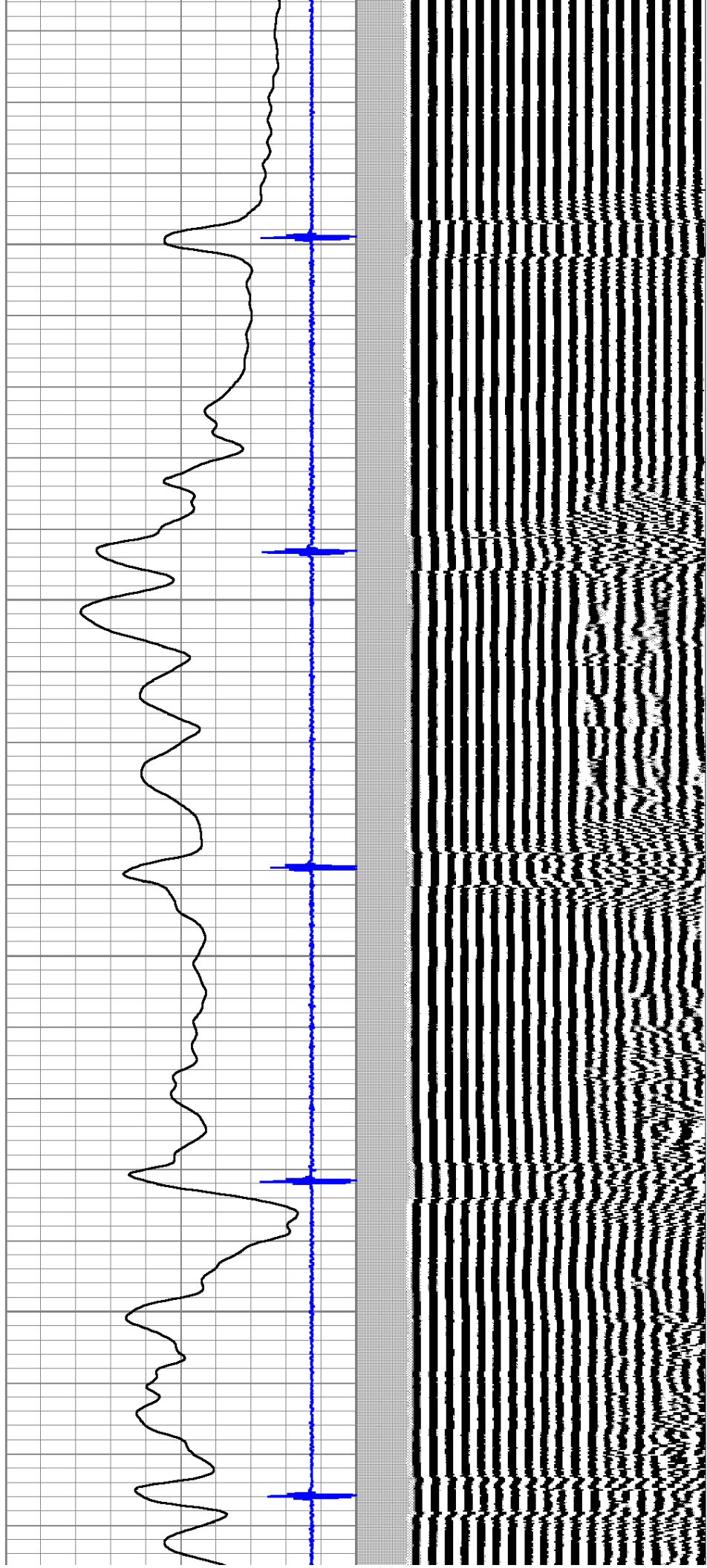


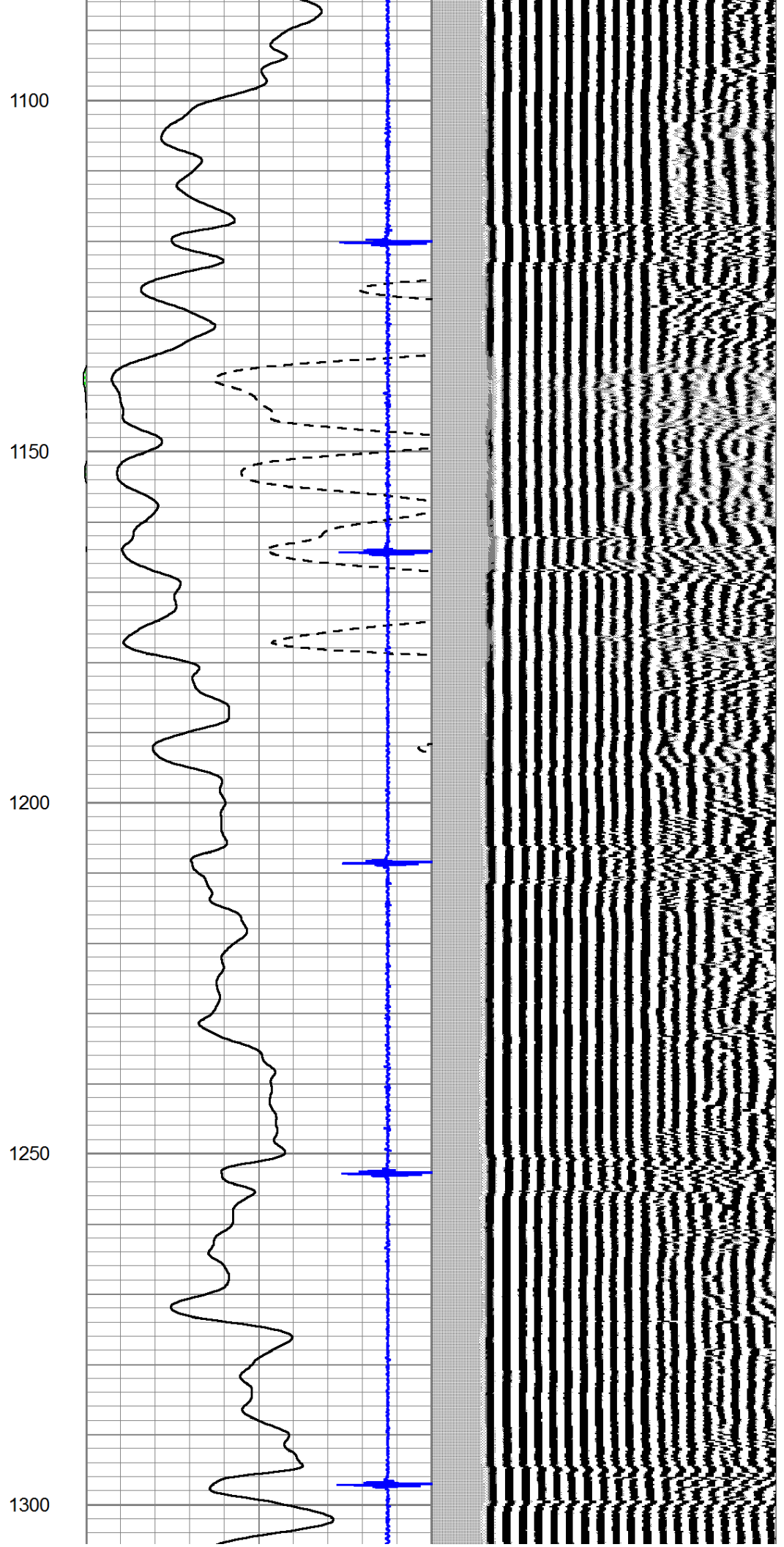
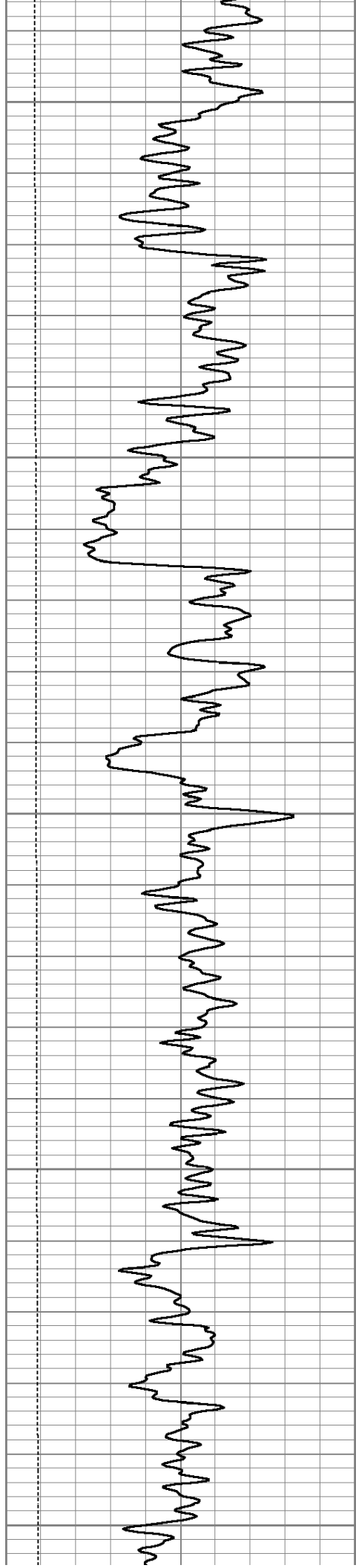
900

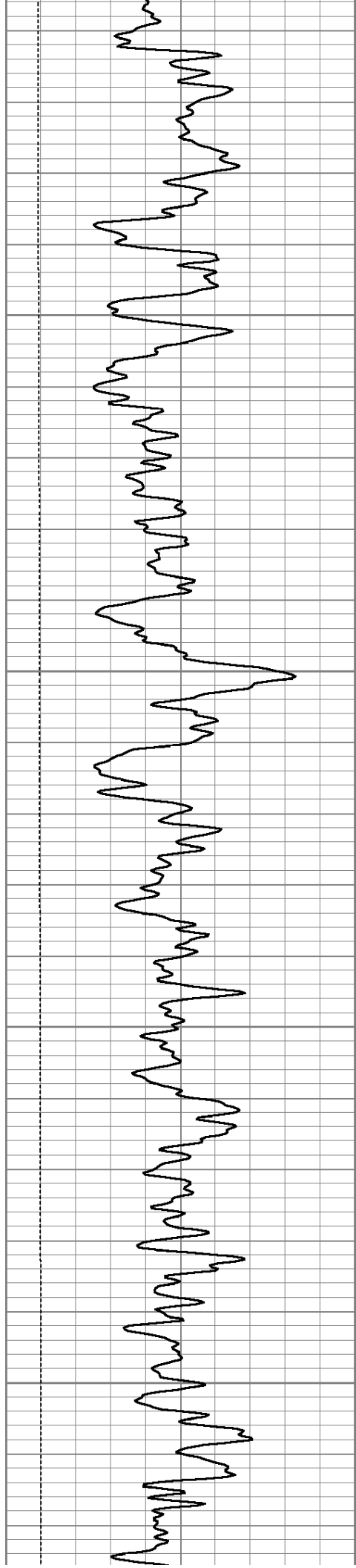
950

1000

1050





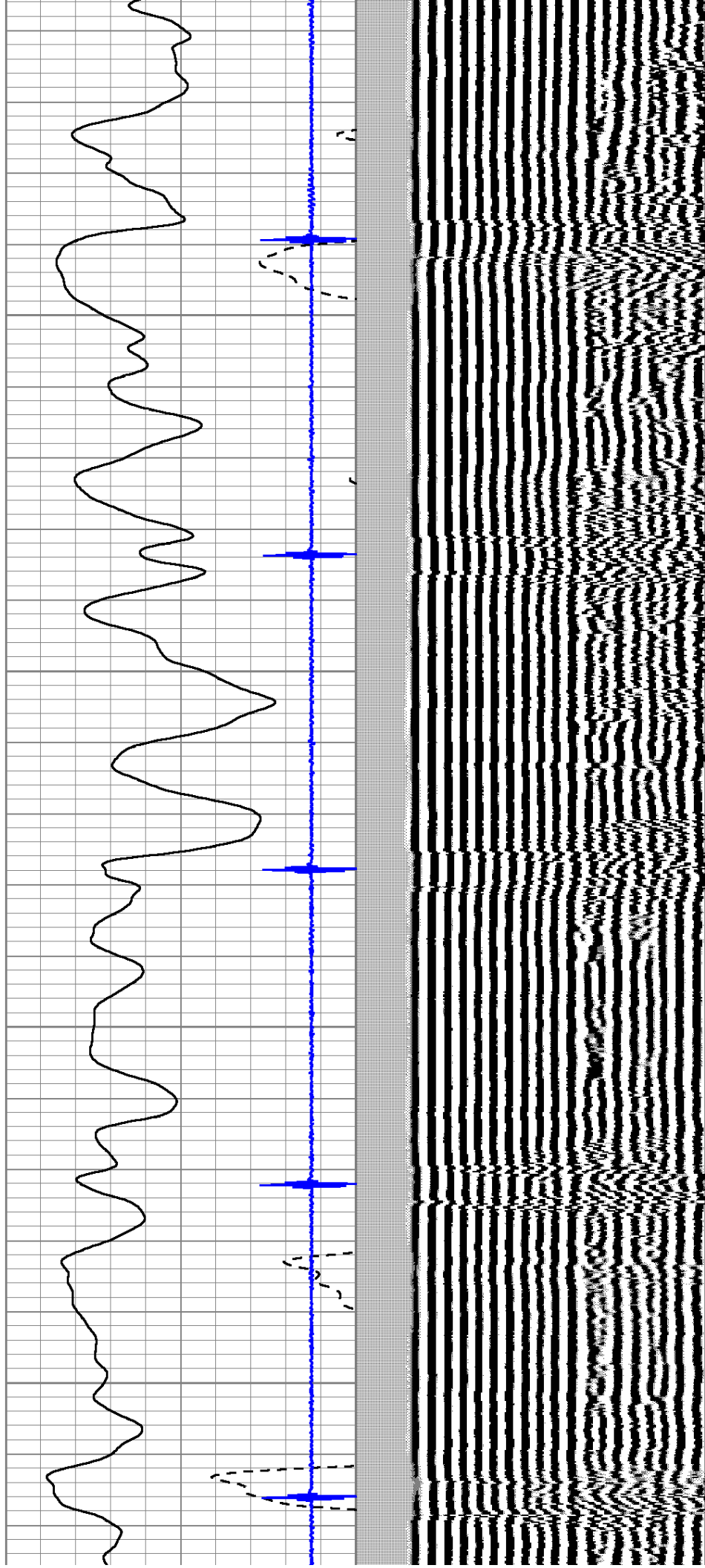


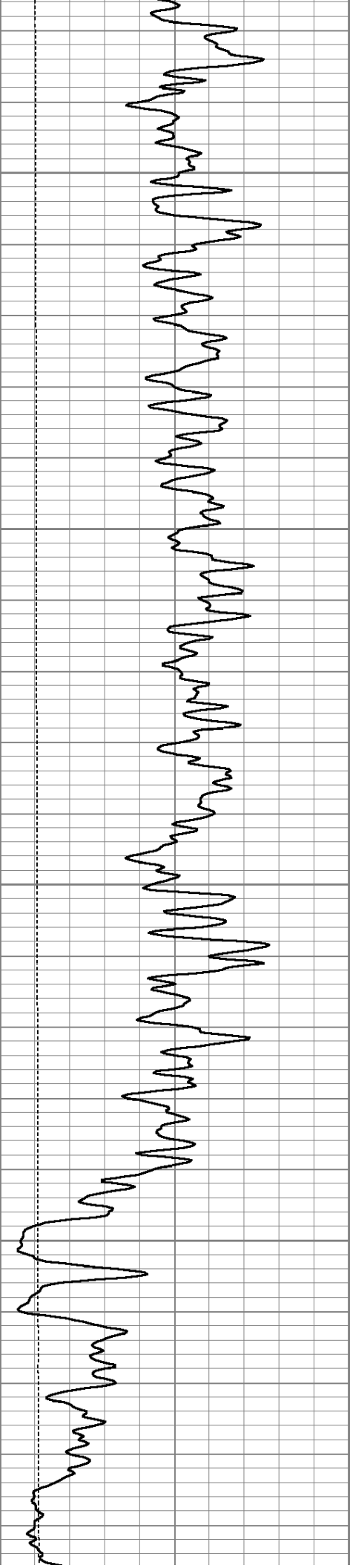
1350

1400

1450

1500





1550

1600

1650

1700

