

Company	Meridian Energy Inc.	Company	Meridian Energy Inc.
Well	Hamel 1-A	Well	Hamel 1-A
Field	Lynd	Field	Lynd
County	Rooks	County	Rooks
State	Kansas	State	Kansas
Location:	330 FSL & 405 FWL	Location:	330 FSL & 405 FWL
APR # :	15 163 24029	APR # :	15 163 24029
SEC 33	TMP 56	RGE	19W
Log Measured From	Ground Level	Elevation	2211'
Drilling Measured From	KB 7 AGL	Elevation	2211'
Date	One	Other Services	D.L. 2217 G.L. 2211
Run Number	3807		
Depth Dilater	3807		
Bottom Logged Interval	3779		
Top Log Interval	3109		
Casing Collar	8.565 @ 216'		
Case Log	7.8'		
Case Log	7.8'		
Time First in Hole	Chemical Mud		
Drilling / Viscosity	9.171		
pH / Fluid Loss	10.560		
Source of Sample	PT		
Rm @ Meas. Temp	.56@76def		
Rm @ Meas. Temp	.56@76def		
Rm @ Meas. Temp	1.1@77def		
Source of Rm / Rm	Calculated		
Rm @ BHT	65@105def		
Time Circulation Stopped	12:00 a.m.		
Time Logged on Bottom	2:15 a.m.		
Maximum Recorder Temperature	105def		
Equipment Number	1045		
Location	Hays, KS		
Recorded By	M. Headlata		

<<< Fold Here >>>

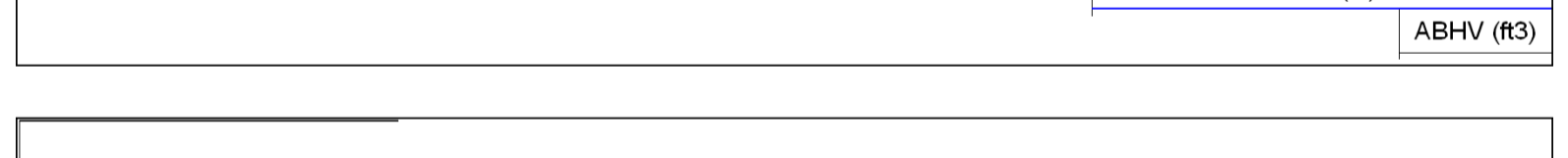
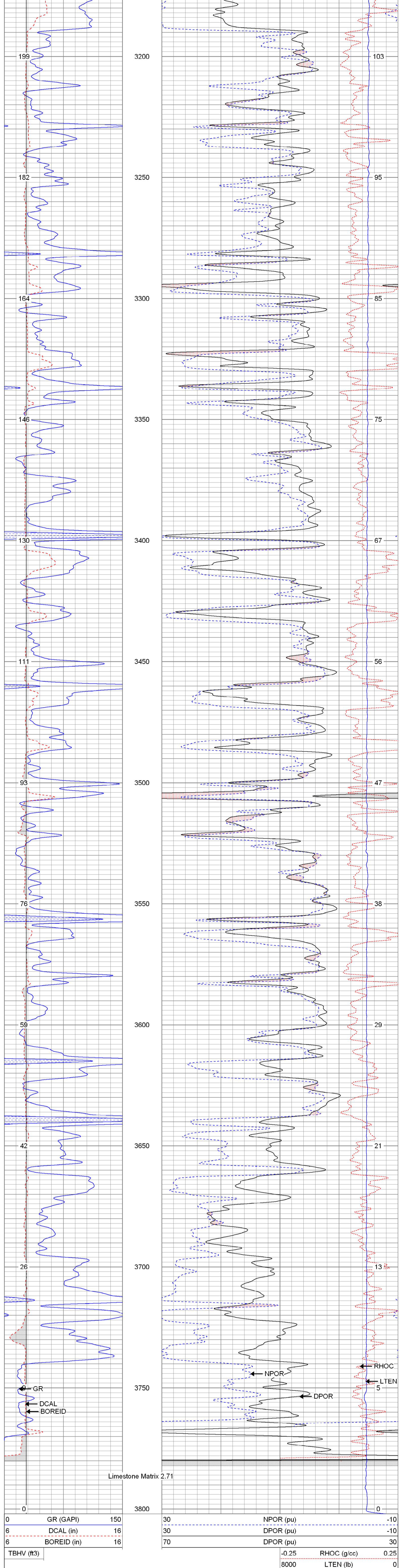
All interpretations are opinions based on inferences from electrical or other measurements and we cannot and do not guarantee the accuracy or correctness of any interpretation, and we shall not, except in the case of gross or willful negligence on our part, be liable or responsible for any loss, costs, damages, or expenses incurred or sustained by anyone resulting from any interpretation made by any of our officers, agents or employees. These interpretations are also subject to our general terms and conditions set out in our current Price Schedule.

Comments

Thanks for using The Perforators LLC Hays, KS. (785-621-4604)

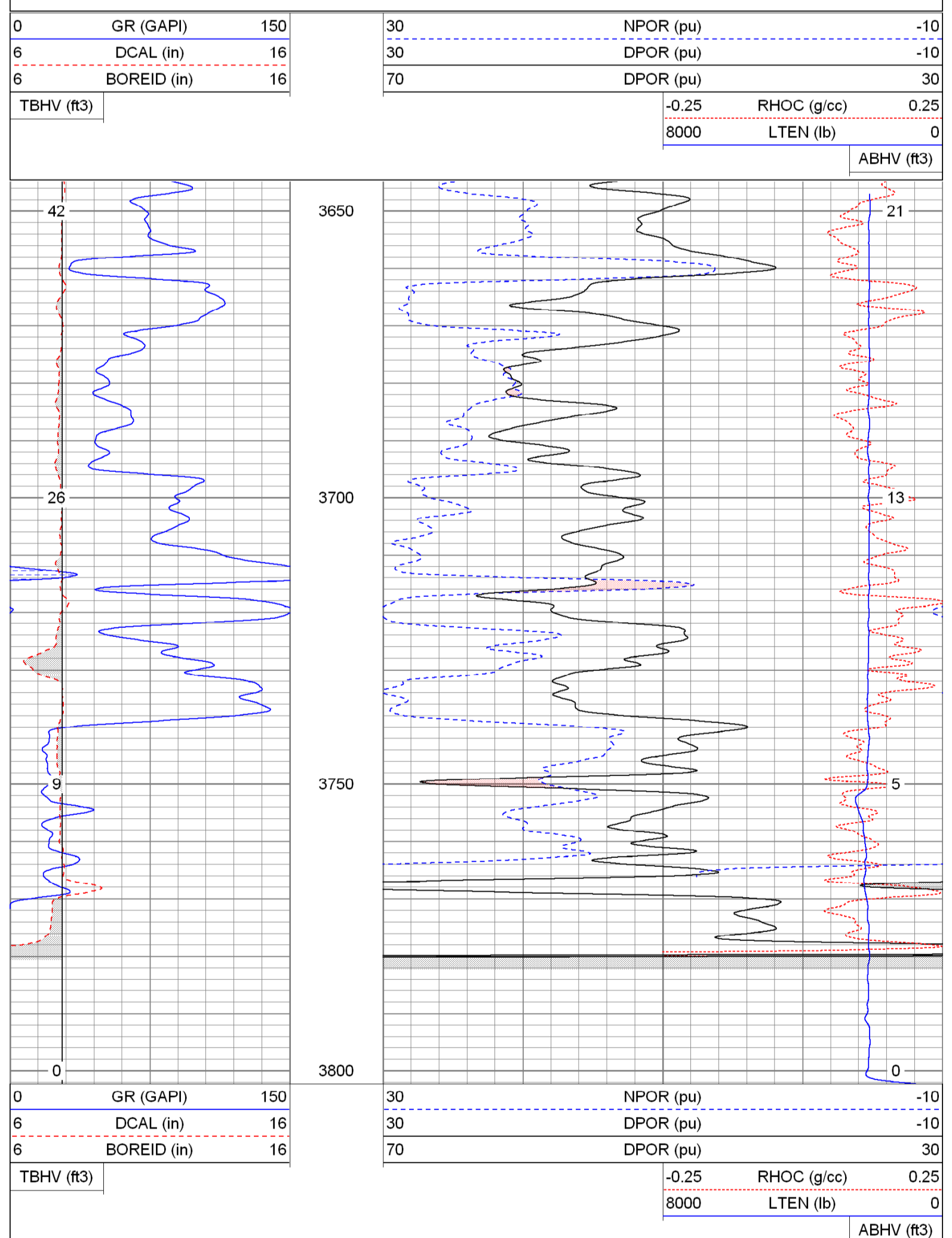
Main Pass

Database File: mehamel1aoh.db
 Dataset Pathname: pass2
 Presentation Format: kcdnl
 Dataset Creation: Tue Sep 18 02:25:52 2012 by Log Open-Cased 100827
 Charted by: Depth in Feet scaled 1:240



Repeat Pass

Database File: mehamel1aoh.db
 Dataset Pathname: pass1
 Presentation Format: kcdnl
 Dataset Creation: Tue Sep 18 02:16:56 2012 by Log Open-Cased 100827
 Charted by: Depth in Feet scaled 1:240



Calibration Report

Database File: mehamel1aoh.db
 Dataset Pathname: pass1
 Dataset Creation: Tue Sep 18 02:16:56 2012 by Log Open-Cased 100827

Dual Induction Calibration Report

Serial-Model: 080522-Probe
 Surface Cal Performed: Tue Aug 28 14:15:03 2012
 Downhole Cal Performed: Tue Aug 28 14:15:06 2012
 After Survey Verification Performed: Tue Aug 28 14:15:08 2012

Surface Calibration		Readings		References		Results	
Loop:	Air	Loop		Air	Loop	m	b
Deep	0.001	0.639	V	0.000	400.000	mmho/m	626.539
Medium	0.000	0.736	V	0.000	464.000	mmho/m	-0.207
Internal:	Zero	Cal		Zero	Cal	m	b
Deep	0.000	0.639	V	0.000	400.000	mmho/m	626.575
Medium	0.001	0.736	V	0.000	464.000	mmho/m	-0.945

Downhole Calibration		Readings		References		Results	
	Zero	Cal		Zero	Cal	m'	b'
Deep	0.306	400.046	mmho/m	-0.038	399.939	mmho/m	1.001
Medium	0.355	464.559	mmho/m	0.096	464.073	mmho/m	1.000
LL3		7.250	V		750.000	Ohm-m	
		-0.000	V		12.000	Ohm-m	
		-7.360	V		3745.000	mmho-m	

Compensated Density Calibration Report

Serial-Model: 2388DHT-DHT
 Source / Verifier: /
 Master Calibration Performed: Thu Sep 13 16:04:57 2012

Master Calibration		Density		Far Detector		Near Detector	
Magnesium	1.750	g/cc	717.11		305.57	cps	
Aluminum	2.620	g/cc	140.63		205.93	cps	
		Spine Angle = 76.38		Density/Spine Ratio = 0.519			
	Size		Reading				
Small Ring	8.25	in	5771.32				
Large Ring	14.00	in	10165.20				

Gamma Ray Calibration Report

Serial Number: 2001
 Tool Model: OH
 Performed: Wed Aug 29 08:26:23 2012

Calibrator Value: 1.0 GAPI
 Background Reading: 0.0 cps
 Calibrator Reading: 1.0 cps
 Sensitivity: 0.2300 GAPI/cps

Neutron Calibration Report

Serial Number: 5108
 Tool Model: PROBE
 Performed: Mon Sep 03 08:08:04 2012

Calibrator Value: 1 NAPI
 Calibrator Reading: 1 cps
 Sensitivity: 1 NAPI/cps

Sensor	Offset (ft)	Schematic	Description	Len (ft)	OD (in)	Wt (lb)
NEU	37.85		None	0.75	1.50	5.00
			NEU-PROBE (5108) Probe	4.92	3.63	85.00
GR	32.32		GR-OH (2001)	3.56	3.25	40.00
			CDL-DHT (2388DHT) Digital High Temp CDL Tool	9.69	4.00	201.00
LSD	23.78					
DCAL	23.49					
SSD	23.24					
HEADVOLT	21.47					
CILD	10.60					
SIP	10.60					
CILM	6.89					
RLL3	1.70					
			DIL-Probe (080522) Probe Dual Induction	21.47	4.00	345.00

Dataset: mehamel1aoh.db: field/well/run/1/pass1
 Total Length: 40.39 ft
 Total Weight: 676.00 lb
 O.D.: 4.00 in