

## DUAL RECEIVER CEMENT BOND LOG

Company GREAT PLAINS ENERGY, INC.	Company	GREAT PLAINS ENERGY, INC.		
Well WILTFONG #1	Well	WILTFONG #1		
Field NORTON	Field	NORTON		
County KANSAS	County	NORTON	State	KANSAS
Location:		API #: 15-137-00169-0001		Other Services
SEC	TWP	RGE	Elevation	
Permanent Datum	GROUND LEVEL	Elevation		
Log Measured From	KELLY BUSHING 5' AGL			
Drilling Measured From	KELLY BUSHING			

Date	AUGUST 9, 2012
Run Number	ONE
Depth Driller	3700
Depth Logger	3611
Bottom Logged Interval	3610
Top Log Interval	3700
Open Hole Size	
Type Fluid	WATER
Density / Viscosity	
Max. Recorded Temp.	
Estimated Cement Top	2850
Time Well Ready	
Time Logger on Bottom	
Equipment Number	PT-08
Location	HAYS
Recorded By	JEREMY SCHNEIDER
Witnessed By	MR. PRESTON DREILING

Borehole Record				Tubing Record			
Run Number	Bit	From	To	Size	Weight	From	To
ONE	12.25	00					
TWO	7.875						

Casing Record	Size	Wgt/Ft	Top	Bottom
Surface String	8 5/8		00	
Prot. String				
Production String	5 1/2	14#	00	3653
Inner				

All interpretations are opinions based on inferences from electrical or other measurements and we cannot and do not guarantee the accuracy or correctness of any interpretation, and we shall not, except in the case of gross or willful negligence on our part, be liable or responsible for any loss, costs, damages, or expenses incurred or sustained by anyone resulting from any interpretation made by any of our officers, agents or employees. These interpretations are also subject to our general terms and conditions set out in our current Price Schedule.

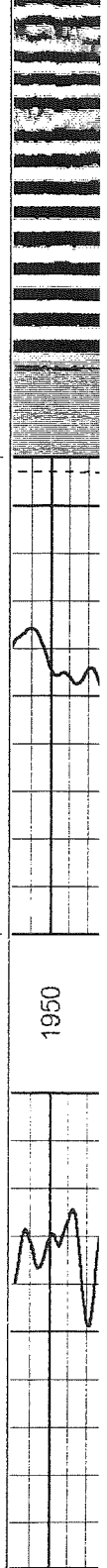
Comments

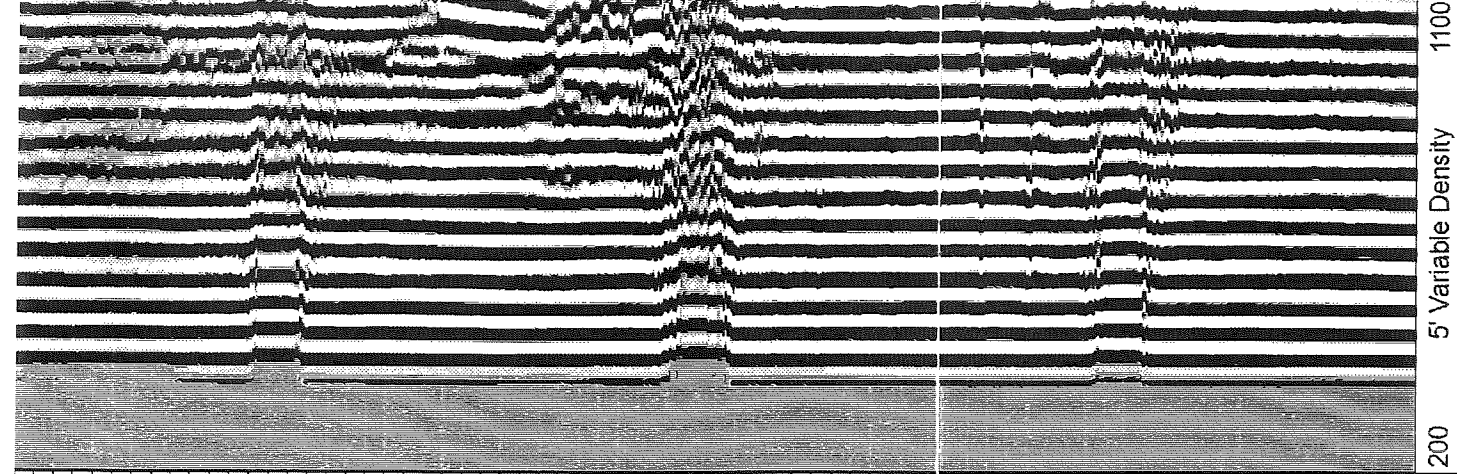
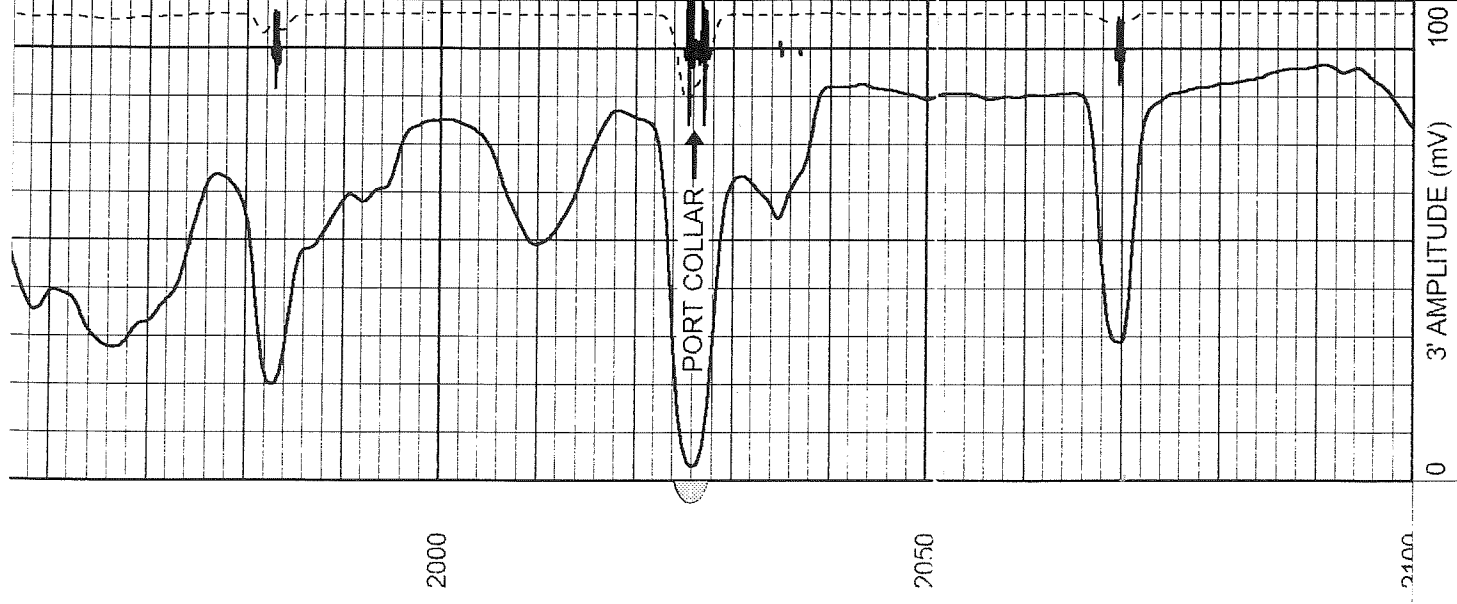
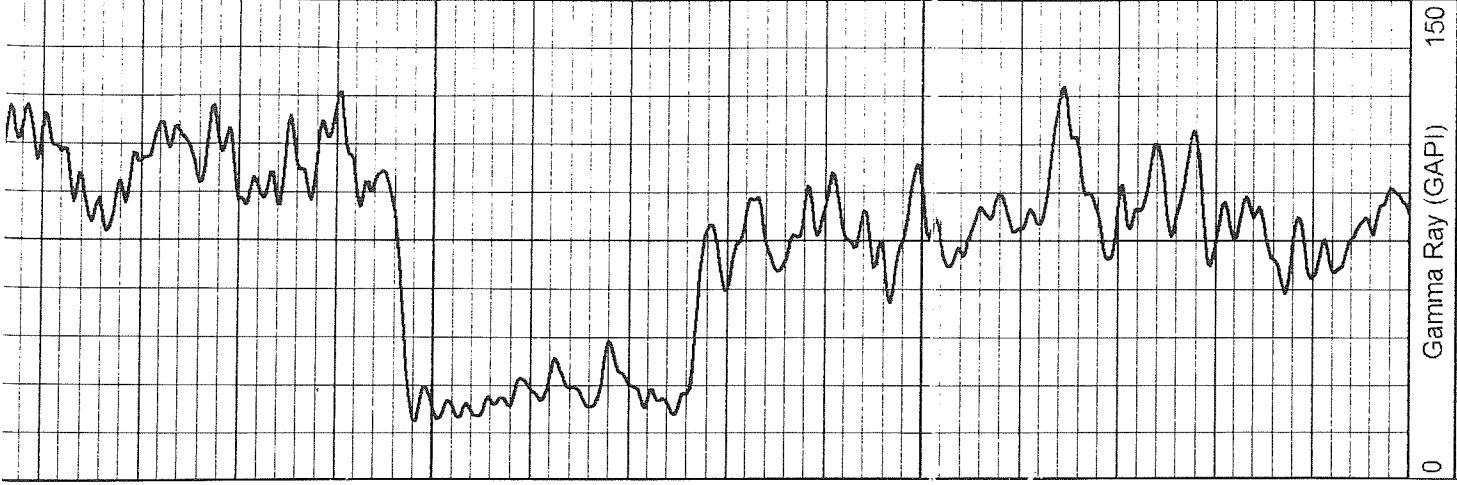
THANKS FOR USING PERF-TECH WIRELINE  
785-623-3969  
NORTON KS, 13 WEST TO RD 13 W, 2 1/2 SOUTH, EAST INTO

## PORT COLLAR

Database File: 08091208.db  
 Dataset Pathname: pass4  
 Presentation Format: 3x5  
 Dataset Creation: Thu Aug 09 11:06:09 2012 by Log SCH 120126  
 Charted by: Depth in Feet scaled 1:240

0	Gamma Ray (GAPI)	150	0	3' AMPLITUDE (mV)	100 200	5' Variable Density	1100
775	3' TRAVEL TIME (usec)	275					
9	Collar Locator	-1					





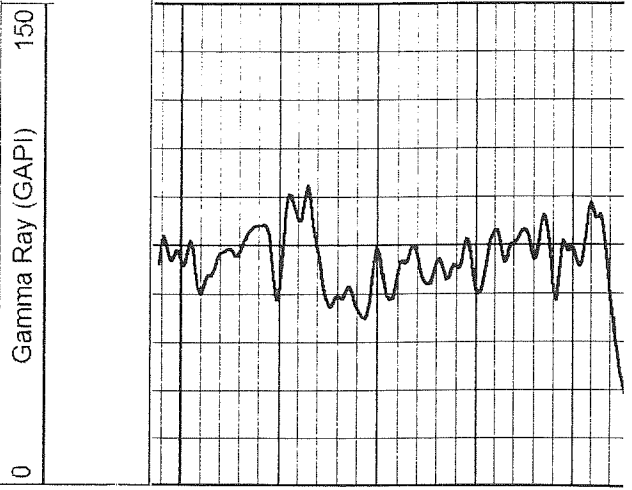
0 775 9 3' AMPLITUDE (mV) 100 275 3' TRAVEL TIME (usec) Collar Locator -1

0 100 200 5' Variable Density 1100

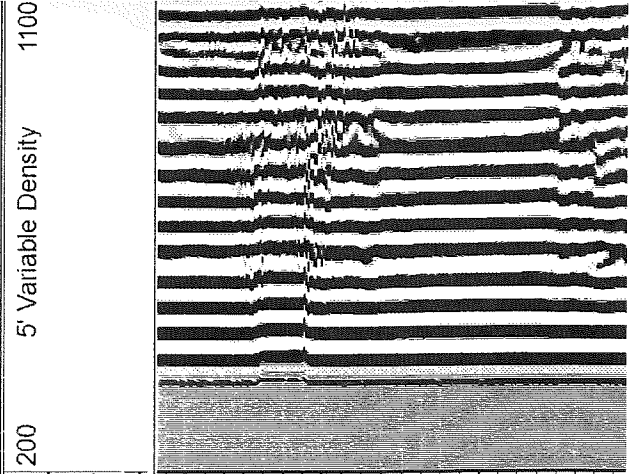
**Perf-Tech**  
Wireline Services

# MAIN PASS

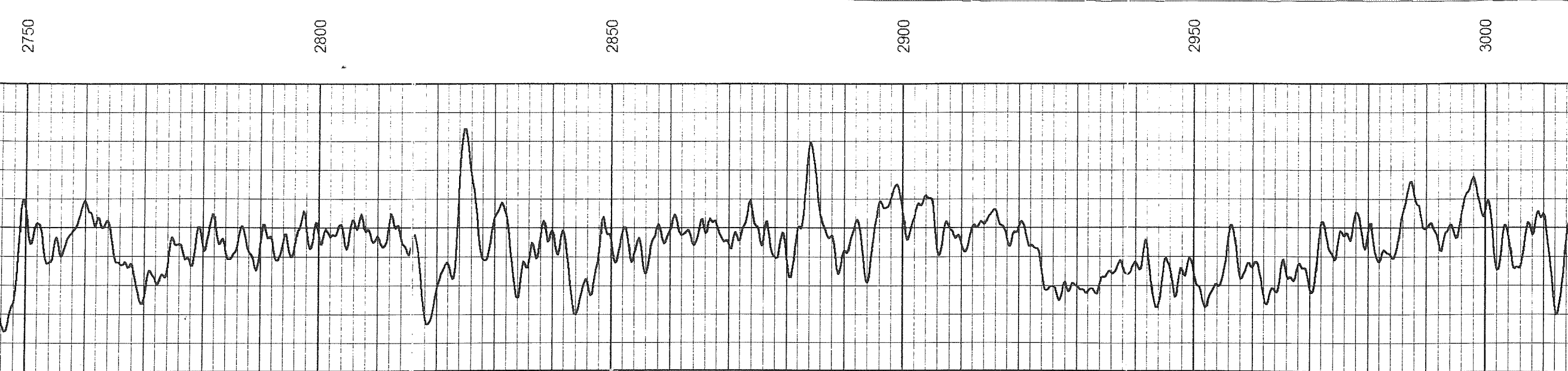
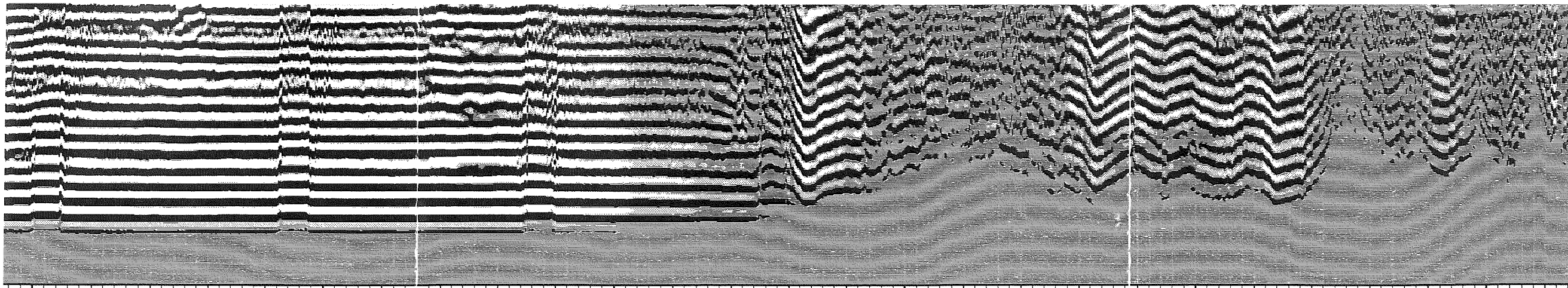
Database File: 08091208.db  
 Dataset Pathname: pass3  
 Presentation Format: 3x5  
 Dataset Creation: Thu Aug 09 10:44:53 2012 by Log SCH 120126  
 Charted by: Depth in Feet scaled 1:240

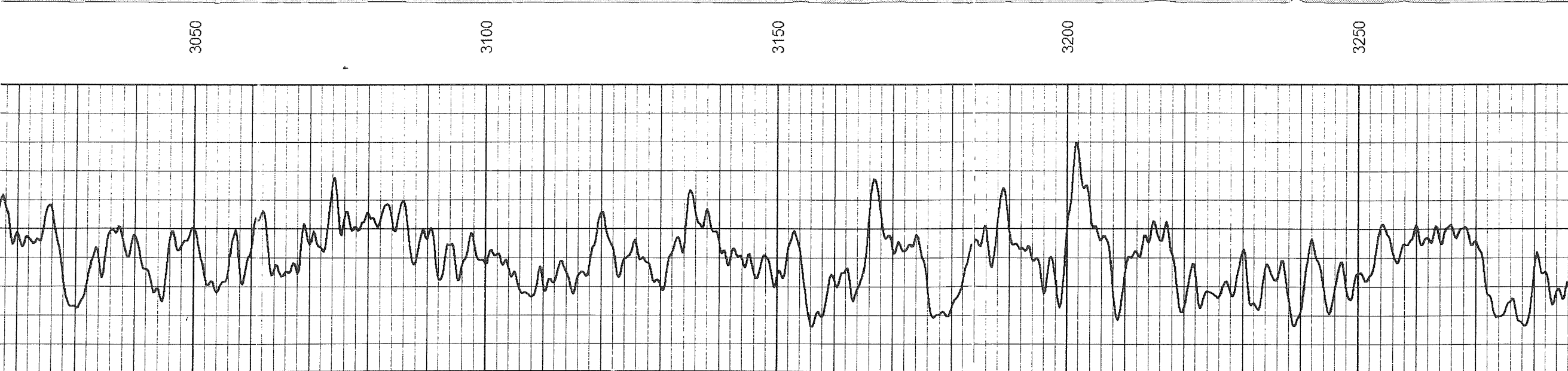
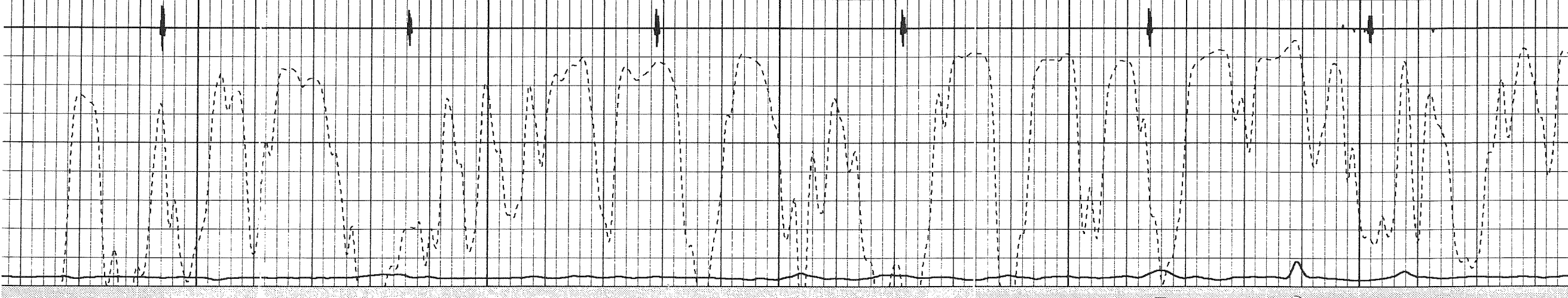
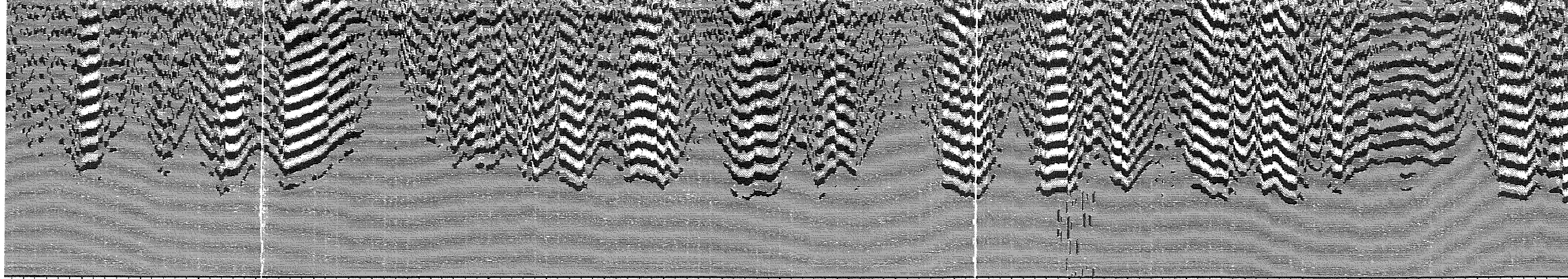


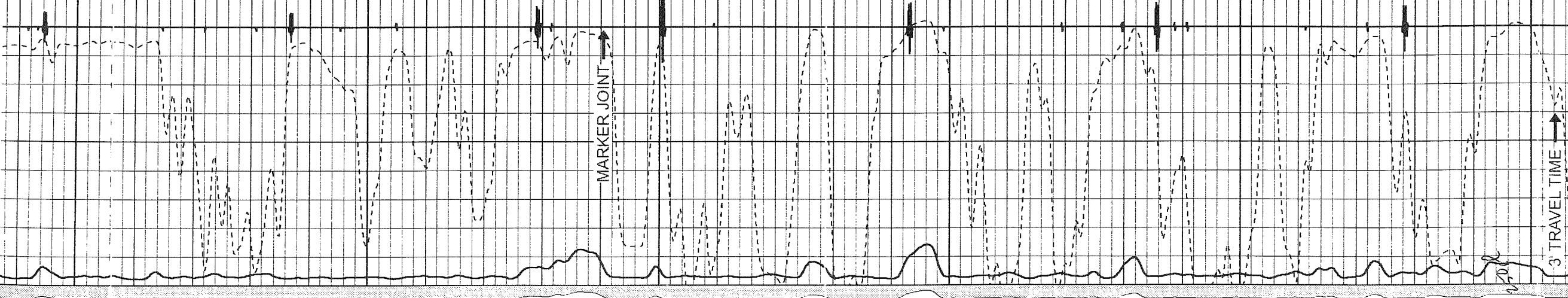
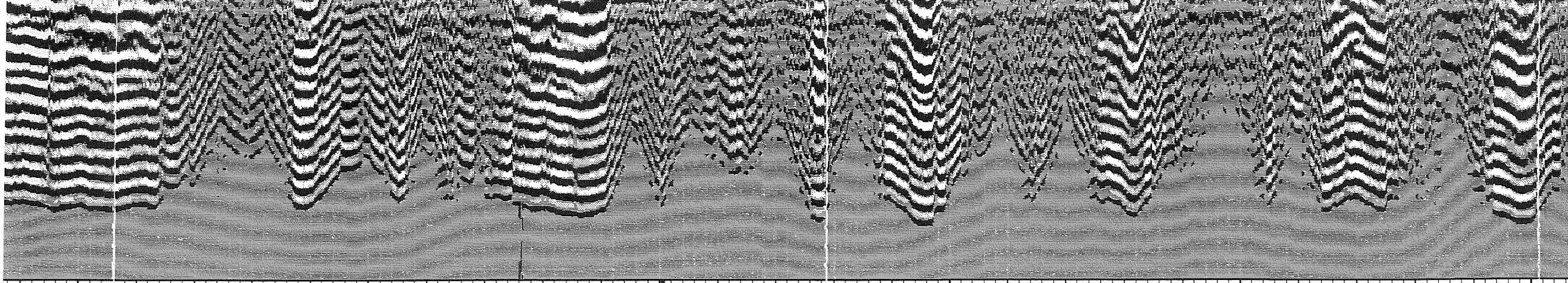
0 775 9 3' AMPLITUDE (mV) 100 275 3' TRAVEL TIME (usec) Collar Locator -1



0 100 200 5' Variable Density 1100







3300

3350

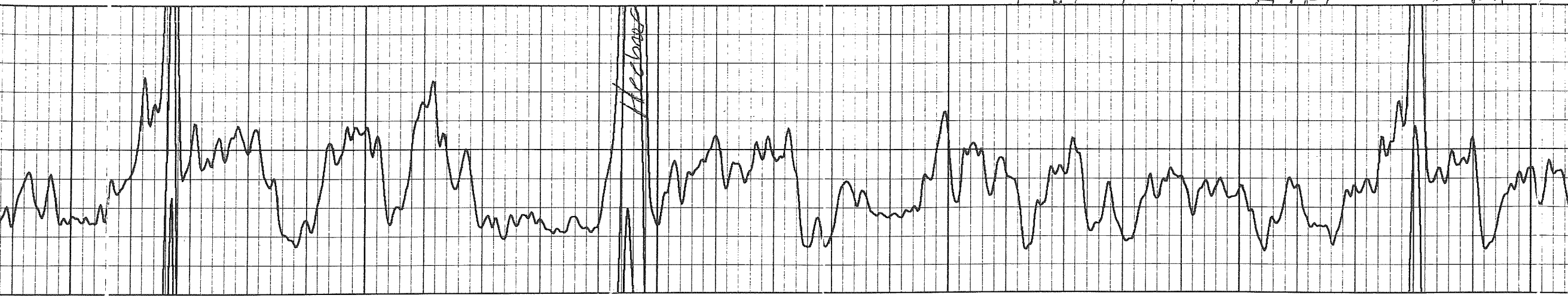
3400

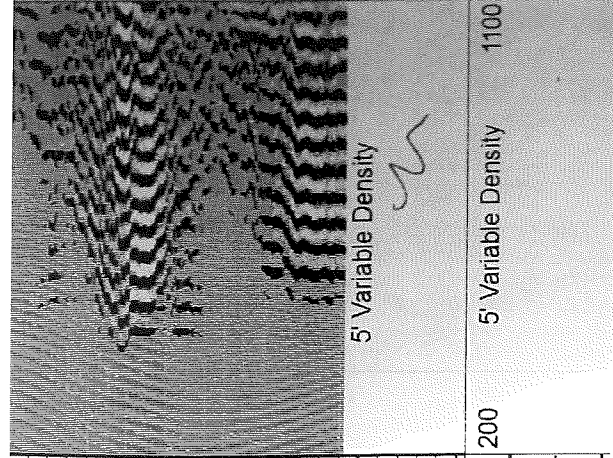
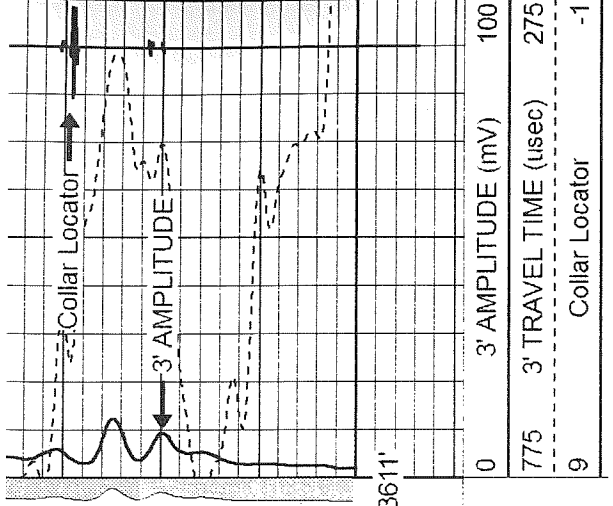
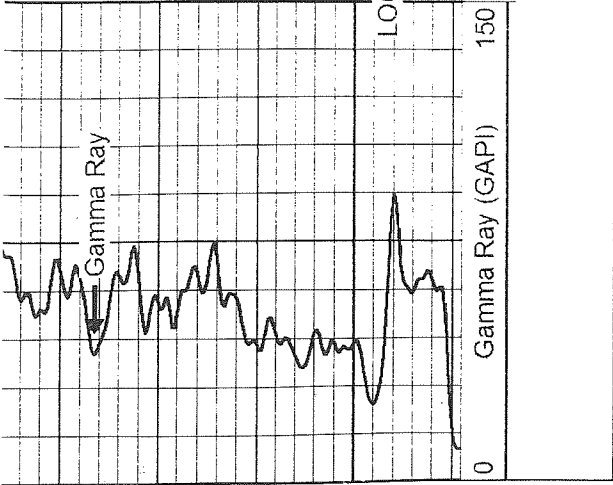
3450

3500

3550

Top  
of  
zone  
# 12 Bls





**Perf-Tech**  
Wireline Services

# REPEAT SECTION

Database File: 08091208.db  
 Dataset Pathname: pass2  
 Presentation Format: 3x5  
 Dataset Creation: Thu Aug 09 10:39:33 2012 by Log SCH 120126  
 Charted by: Depth in Feet scaled 1:240

