



DIGITAL LOG (785) 625-3858

Microresistivity Log

15-153-20,899-00-00

API No.

Company Murfin Drilling Company, Inc.

Well Zola Unit #1-1

Field

County Rawlins

State

Kansas

Location

NW NW SE NE  
1400' FNL & 1200' FEL

Other Services  
CNL/CDL  
DIL/BHCS

Sec: 1 Twp: 5 S Rge: 31 W

Permanent Datum Ground Level Elevation 2866  
Log Measured From Kelly Bushing 5 Ft. Above Perm. Datum  
Drilling Measured From Kelly Bushing

Elevation

K.B. 2871  
D.F.  
G.L. 2866

Date 5/3/2012

Run Number Two

Depth Driller 4490

Depth Logger 4492

Bottom Logged Interval 4491

Top Log Interval 3550

Casing Driller 8.625 @ 220

Casing Logger 219

Bit Size 7.875

Type Fluid in Hole Chemical

Salinity, ppm CL 1500

Density / Viscosity 9.3 50

pH / Fluid Loss 11.0 6.0

Source of Sample Flowline

Rm @ Meas. Temp .55 @ 82

Rmf @ Meas. Temp .41 @ 82

Rmc @ Meas. Temp .74 @ 82

Source of Rmf / Rmc Charts

Rm @ BHT .37 @ 121

Operating Rig Time 4 1/2 Hours

Max Rec. Temp. F 121

Equipment Number 15

Location Hays

Recorded By D.Kerr

Witnessed By Mikeal K. Maune

<<< Fold Here >>>

All interpretations are opinions based on inferences from electrical or other measurements and we cannot and do not guarantee the accuracy or correctness of any interpretation, and we shall not, except in the case of gross or willful negligence on our part, be liable or responsible for any loss, costs, damages, or expenses incurred or sustained by anyone resulting from any interpretation made by any of our officers, agents or employees. These interpretations are also subject to our general terms and conditions set out in our current Price Schedule.

Comments

Thank you for using Log-Tech, Inc.  
(785) 625-3858

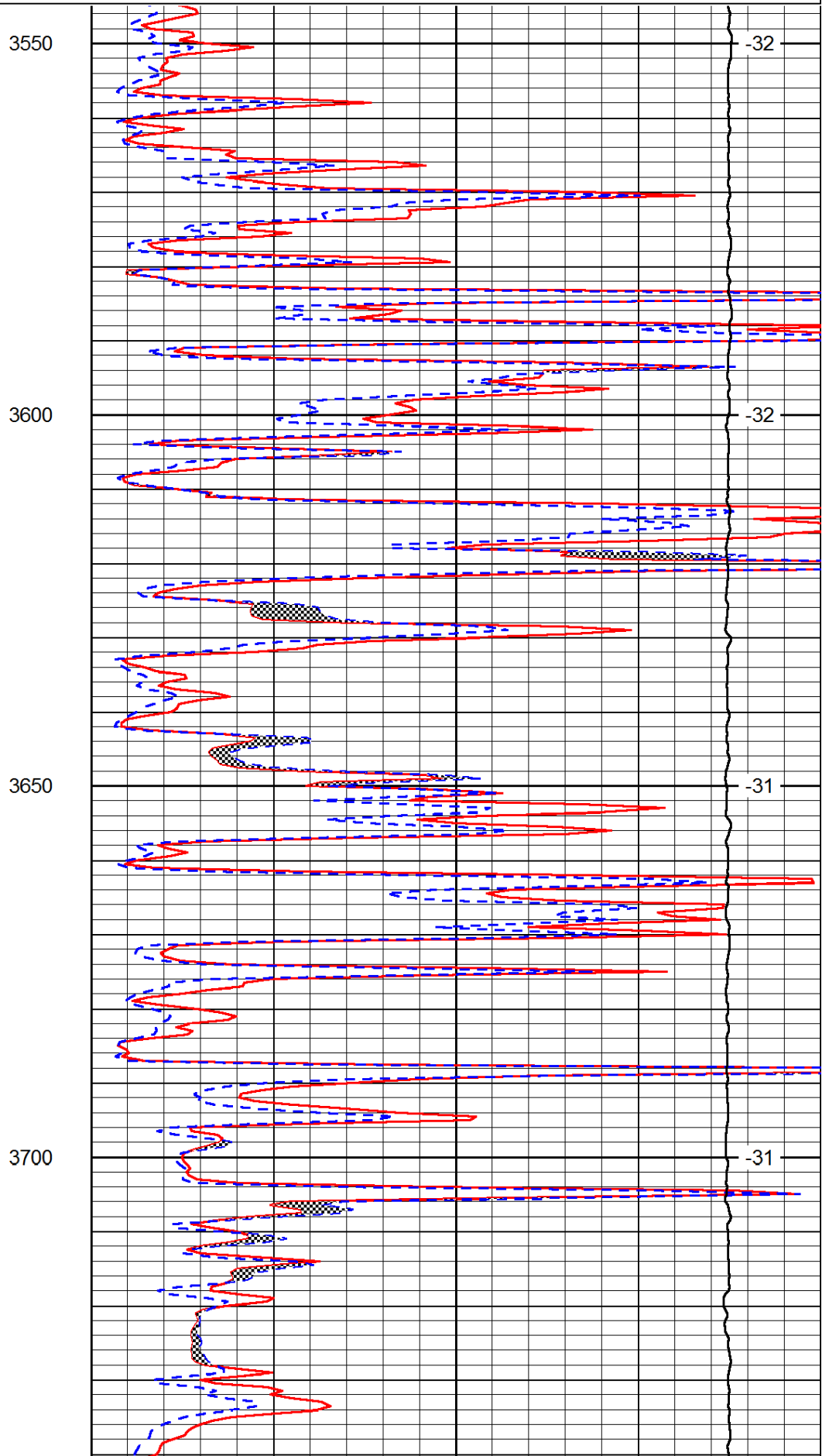
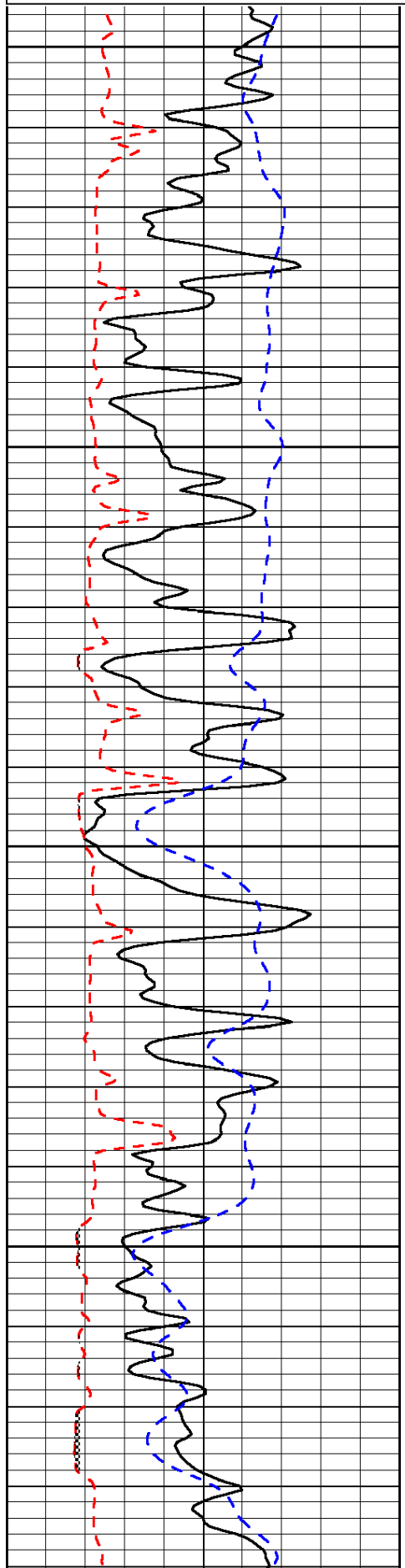
Rexford KS, North to the Y,  
1 West, 6 North ( Around Curves),  
1 East, NorthEast Into.

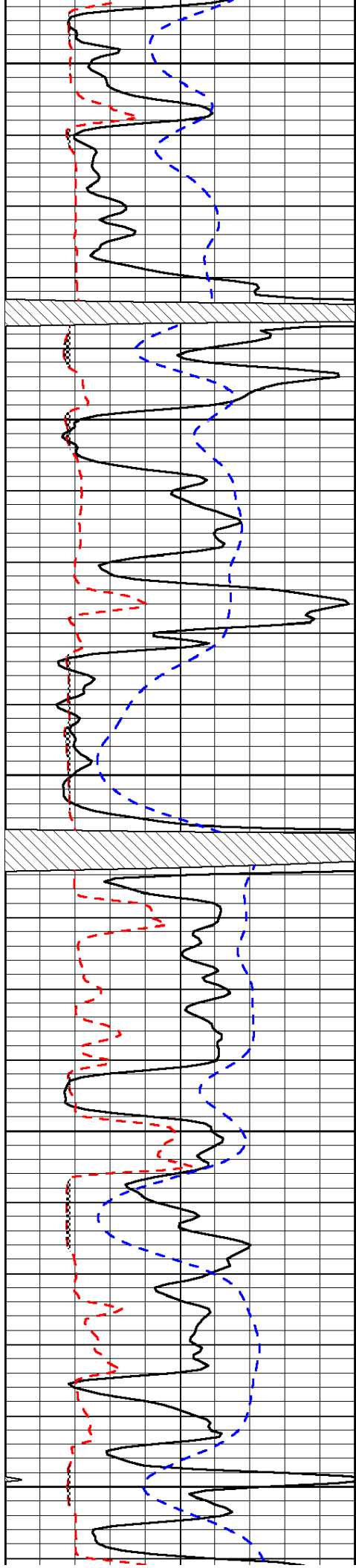
Database File: c:\warrior\data\murfin\_zola unit #1-1\murfin\_zola\_1-1hd.db  
Dataset Pathname: DIL\murfstk  
Presentation Format: micro  
Dataset Creation: Thu May 03 13:46:59 2012  
Charted by: Depth in Feet scaled 1:240

0	Gamma Ray	150
6	Micro Log Caliper (GAPI)	16
-200	SP (mV)	0

0	Micro Inverse 1 X 1	40
0	Micro Normal 2"	40
15000	Line Weight	0

LSPD





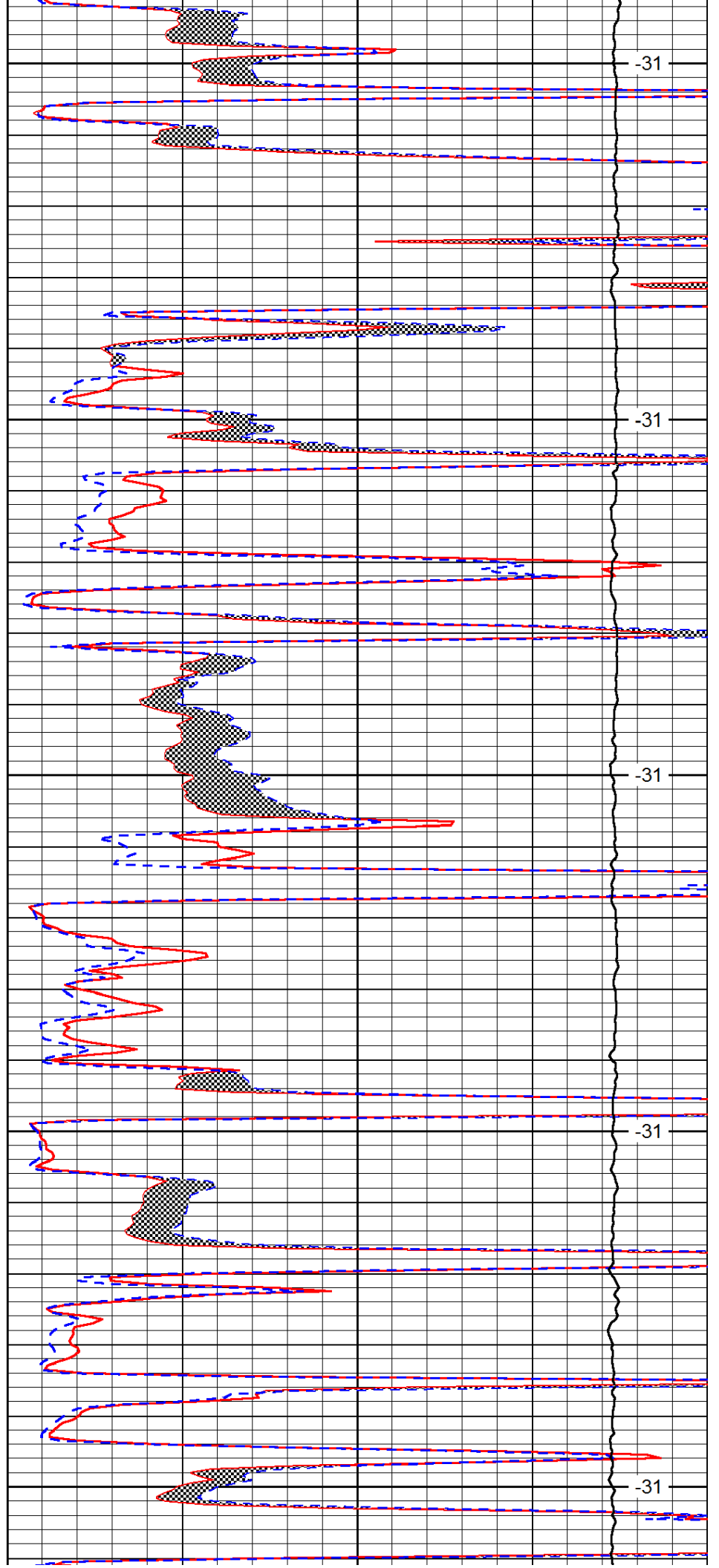
3750

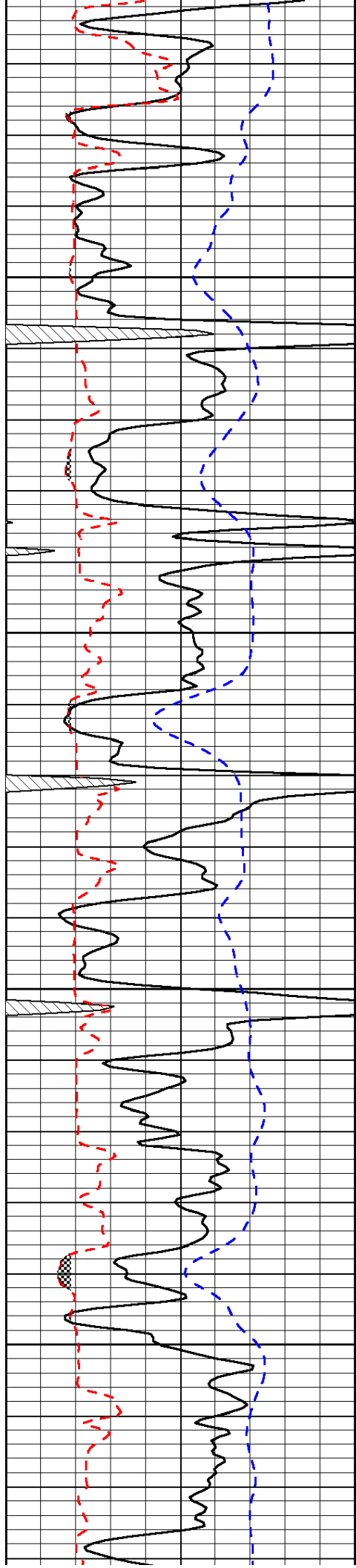
3800

3850

3900

3950



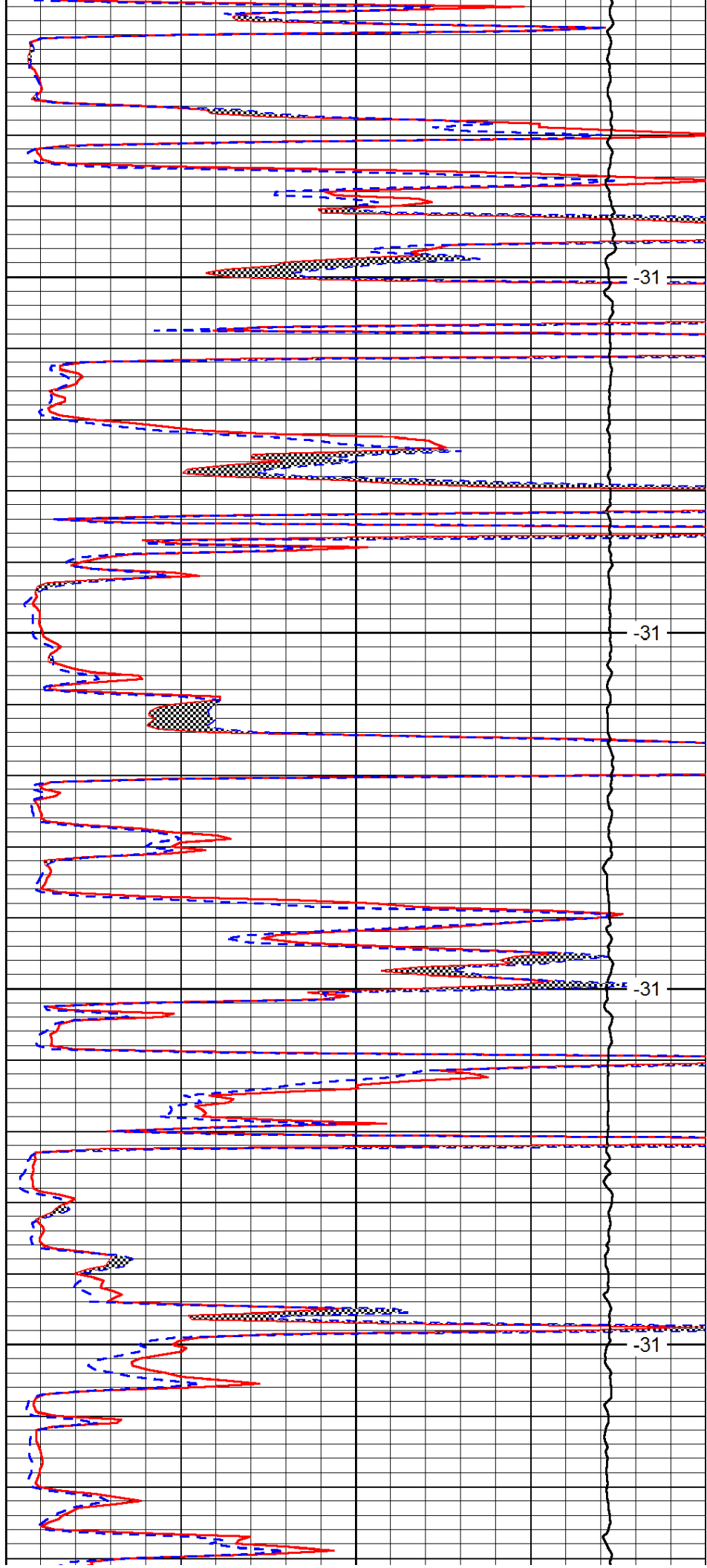


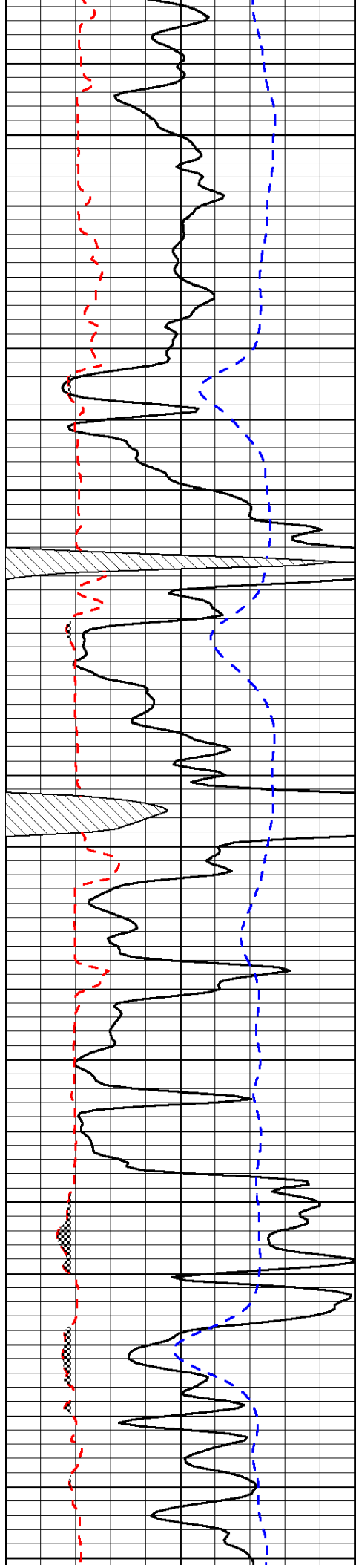
4000

4050

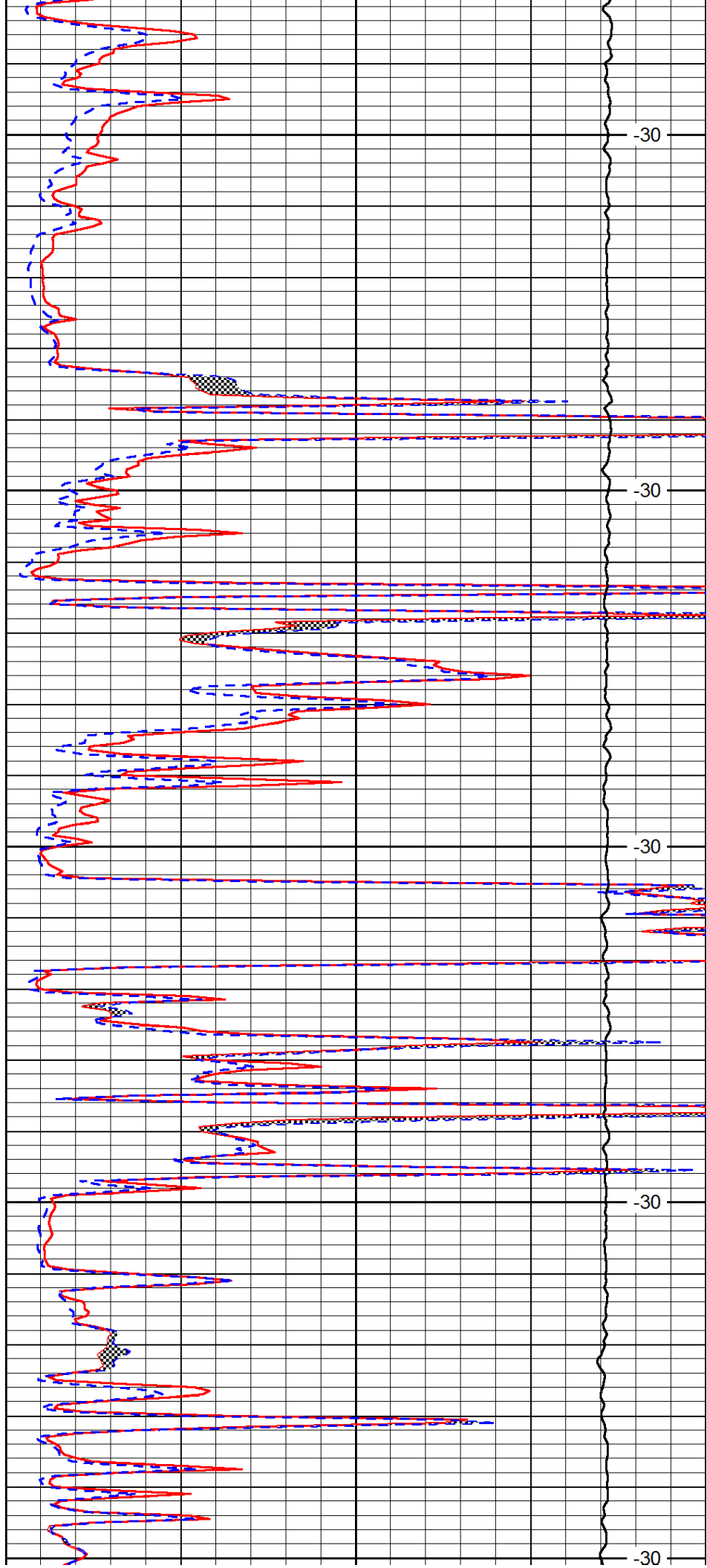
4100

4150

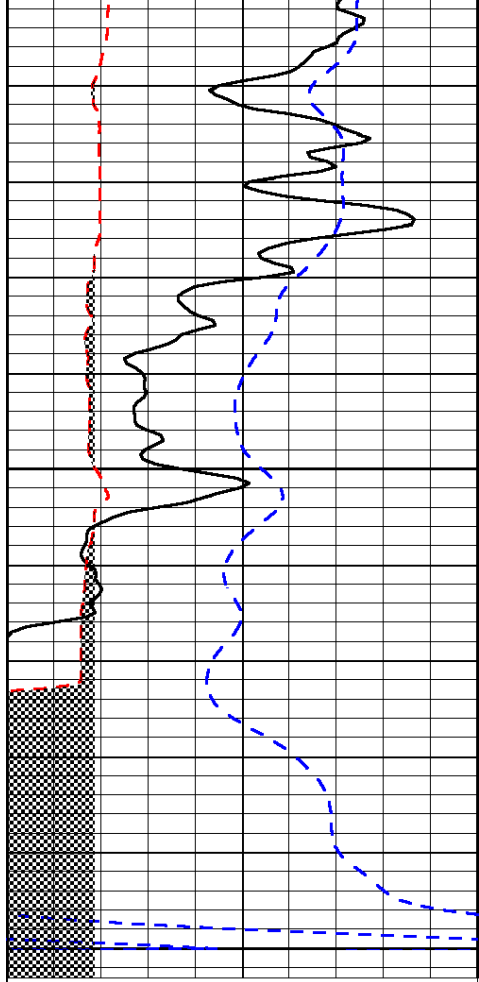




4200  
4250  
4300  
4350  
4400



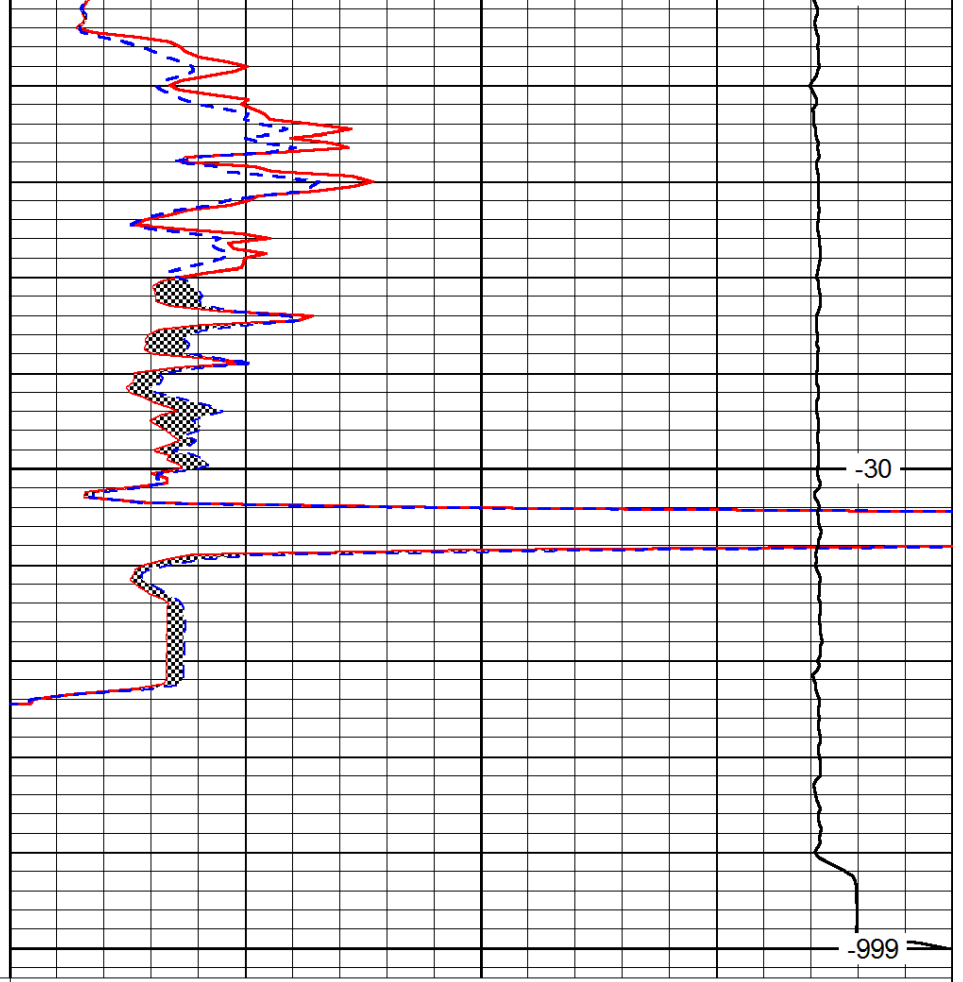
-30  
-30  
-30  
-30  
-30



0	Gamma Ray	150
6	Micro Log Caliper (GAPI)	16
-200	SP (mV)	0

4450

4500



0	Micro Inverse 1 X 1	40
0	Micro Normal 2"	40
15000	Line Weight	0

-30

-999

LSPD