



DIGITAL LOG

(785) 625-3858

**Borehole Compensated
Sonic Log**

API No.

15-153-20,899-00-00

Company **Murfin Drilling Company, Inc.**

Well **Zola Unit #1-1**

Field

County **Rawlins**

State **Kansas**

Location

NW NW SE NE
1400' FNL & 1200' FEL

Other Services
CNL/CDL
MEL/DIL

Sec: 1 Twp: 5 S Rge: 31 W

Permanent Datum Ground Level Elevation 2866

Log Measured From Kelly Bushing 5 Ft. Above Perm. Datum

Elevation
K.B. 2871
D.F.
G.L. 2866

Date 5/3/2012

Run Number Two

Type Log BHC Sonic

Depth Driller 4490

Depth Logger 4492

Bottom Logged Interval 4481

Top Logged Interval 200

Type Fluid In Hole Chemical

Salinity, PPM CL 1500

Density 9.3

Level Full

Max. Rec. Temp. F 121

Operating Rig Time 4 1/2 Hours

Equipment -- Location 15 Hays

Recorded By D Kerr

Witnessed By Milkeal K. Maune

Borehole Record

Casing Record

Run No.	Bit	From	To	Size	Wgt.	From	To
1	12.25	00	220	8.625	24#	00	220
2	7.875	220	4490				

<<< Fold Here >>>

All interpretations are opinions based on inferences from electrical or other measurements and we cannot and do not guarantee the accuracy or correctness of any interpretation, and we shall not, except in the case of gross or willful negligence on our part, be liable or responsible for any loss, costs, damages, or expenses incurred or sustained by anyone resulting from any interpretation made by any of our officers, agents or employees. These interpretations are also subject to our general terms and conditions set out in our current Price Schedule.

Comments

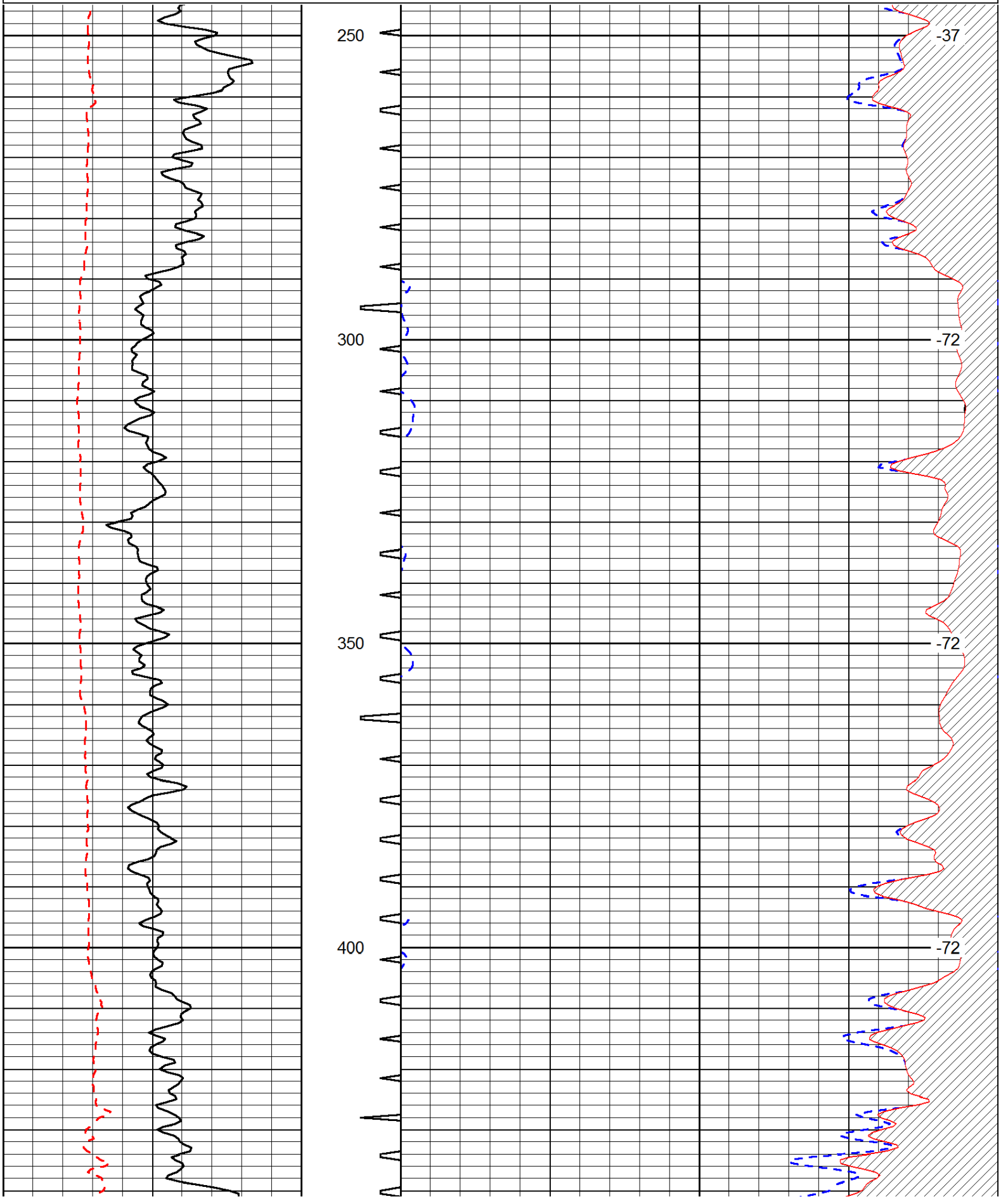
Thank you for using Log-Tech, Inc.
(785) 625-3858

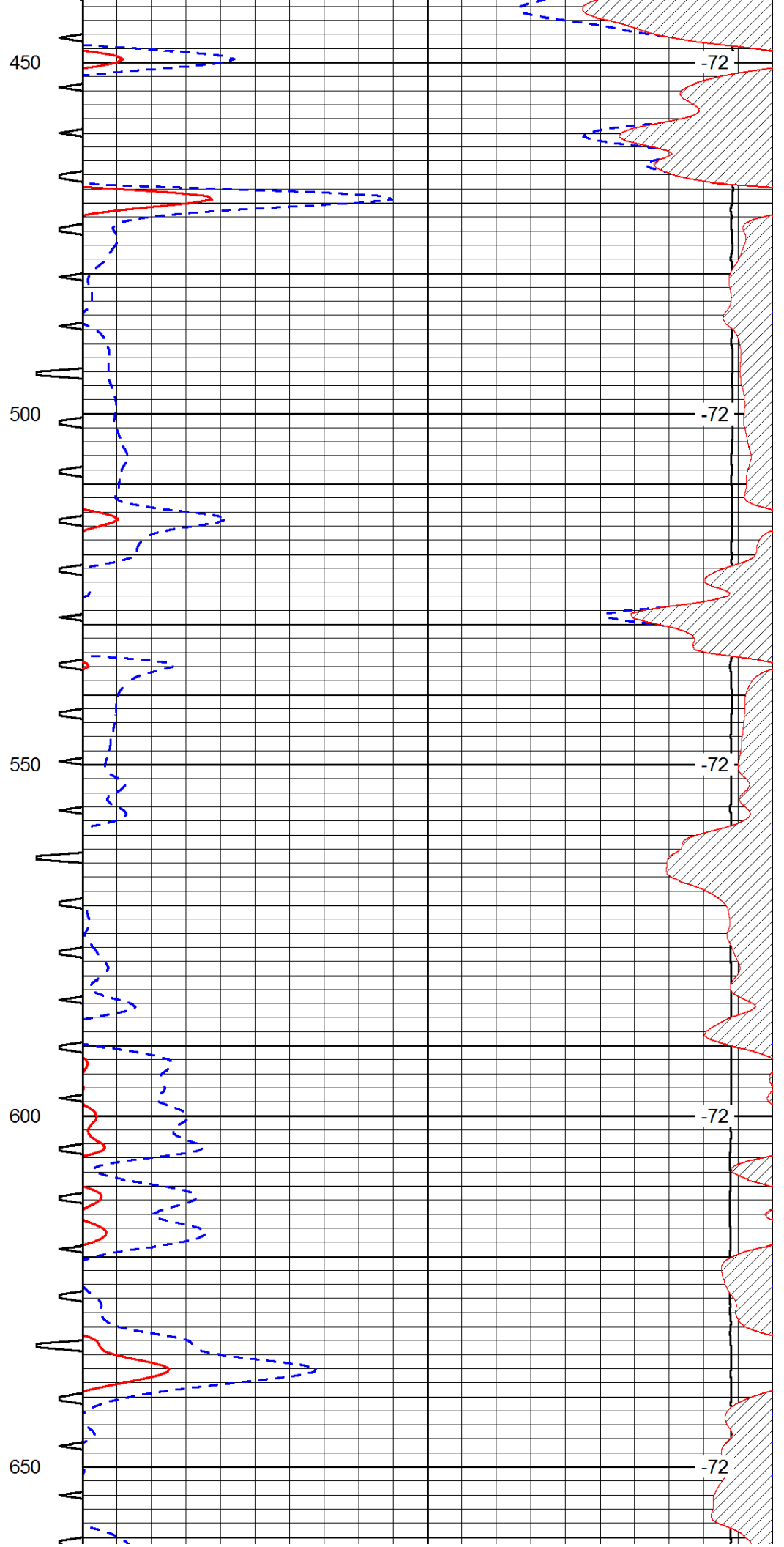
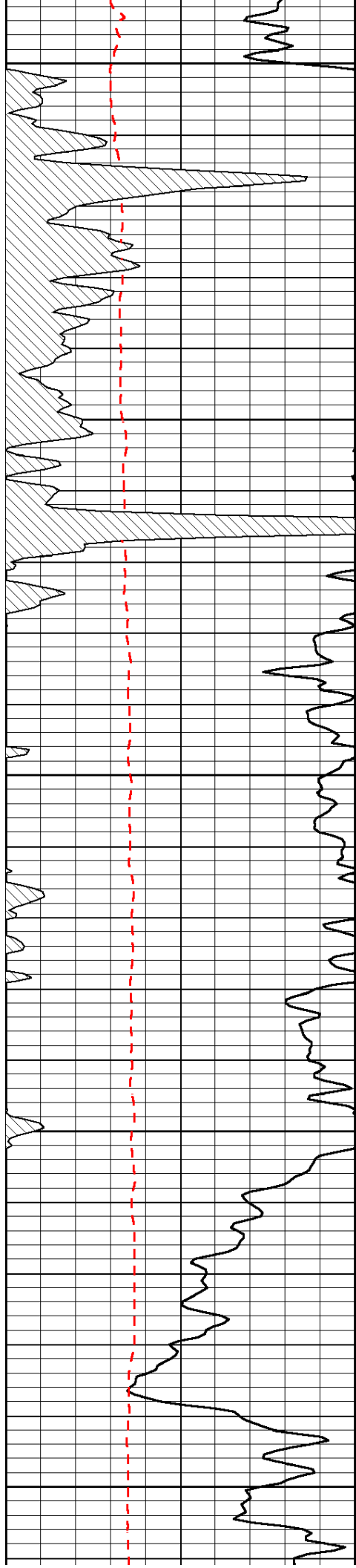
Rexford KS, North to the Y,
1 West, 6 North (Around Curves),
1 East, NorthEast Into.

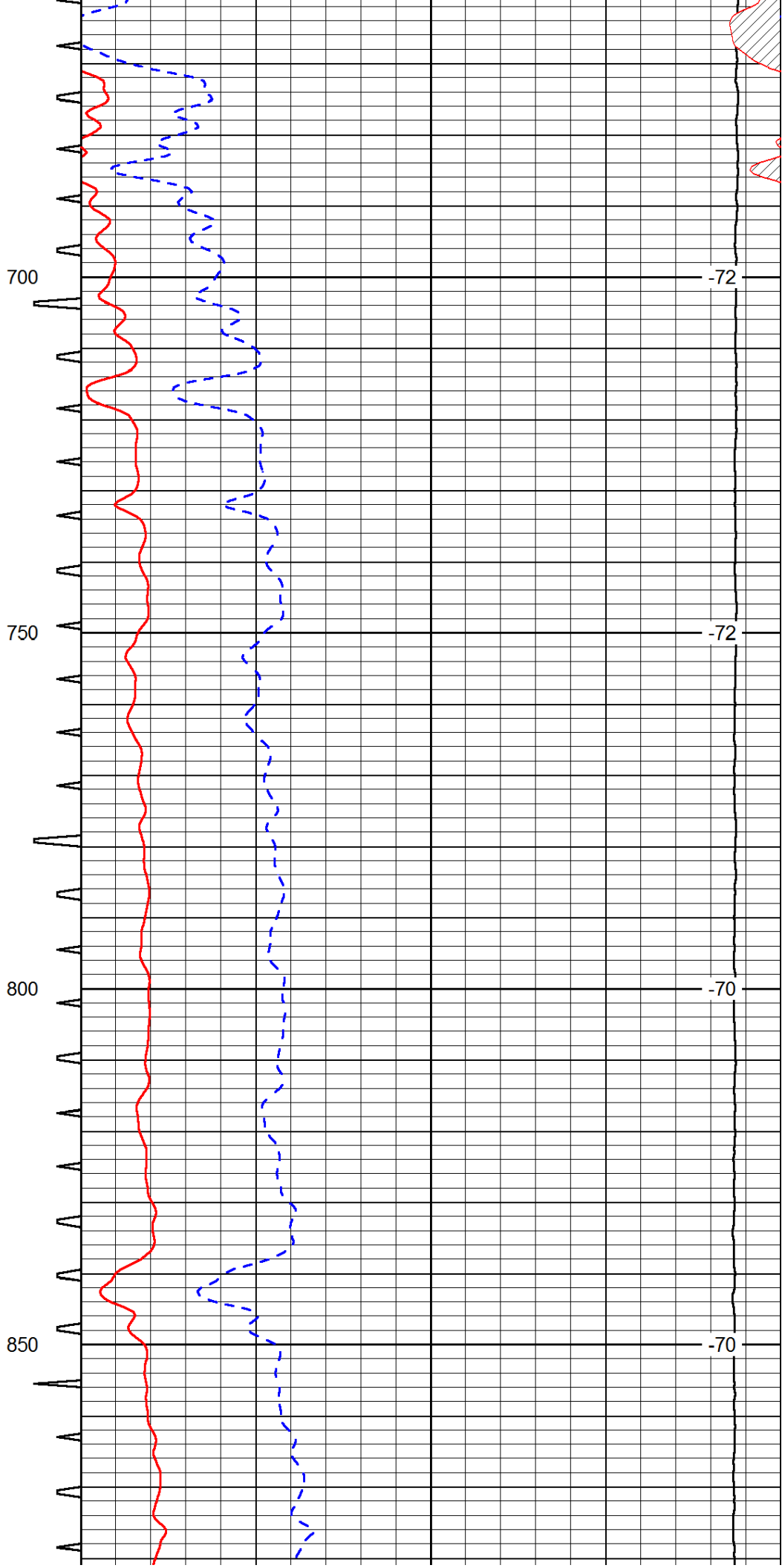
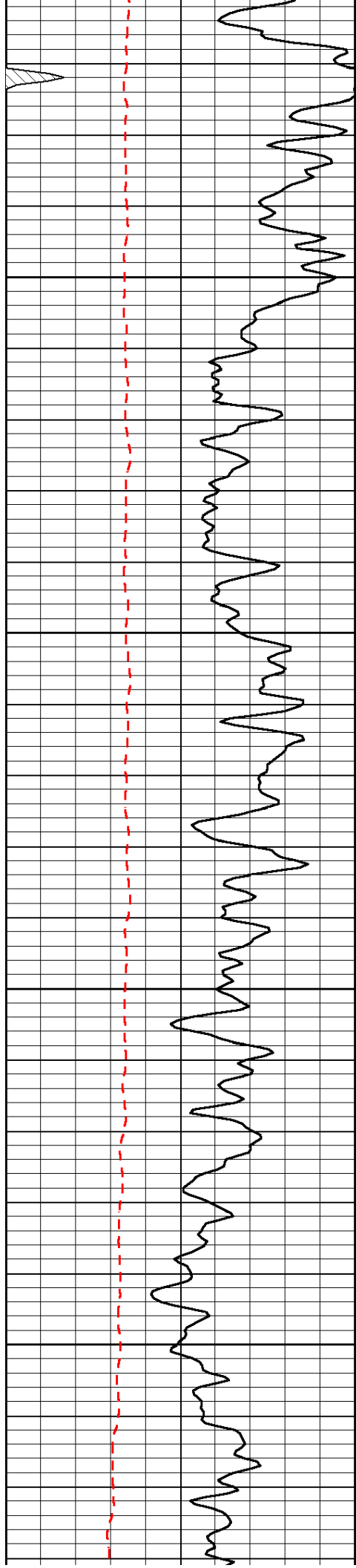
Database File: c:\warrior\data\murfin_zola unit #1-1\murfin_zola_1-1hd.db
 Dataset Pathname: DIL\murfstk
 Presentation Format: sonic
 Dataset Creation: Thu May 03 13:46:59 2012
 Charted by: Depth in Feet scaled 1:240

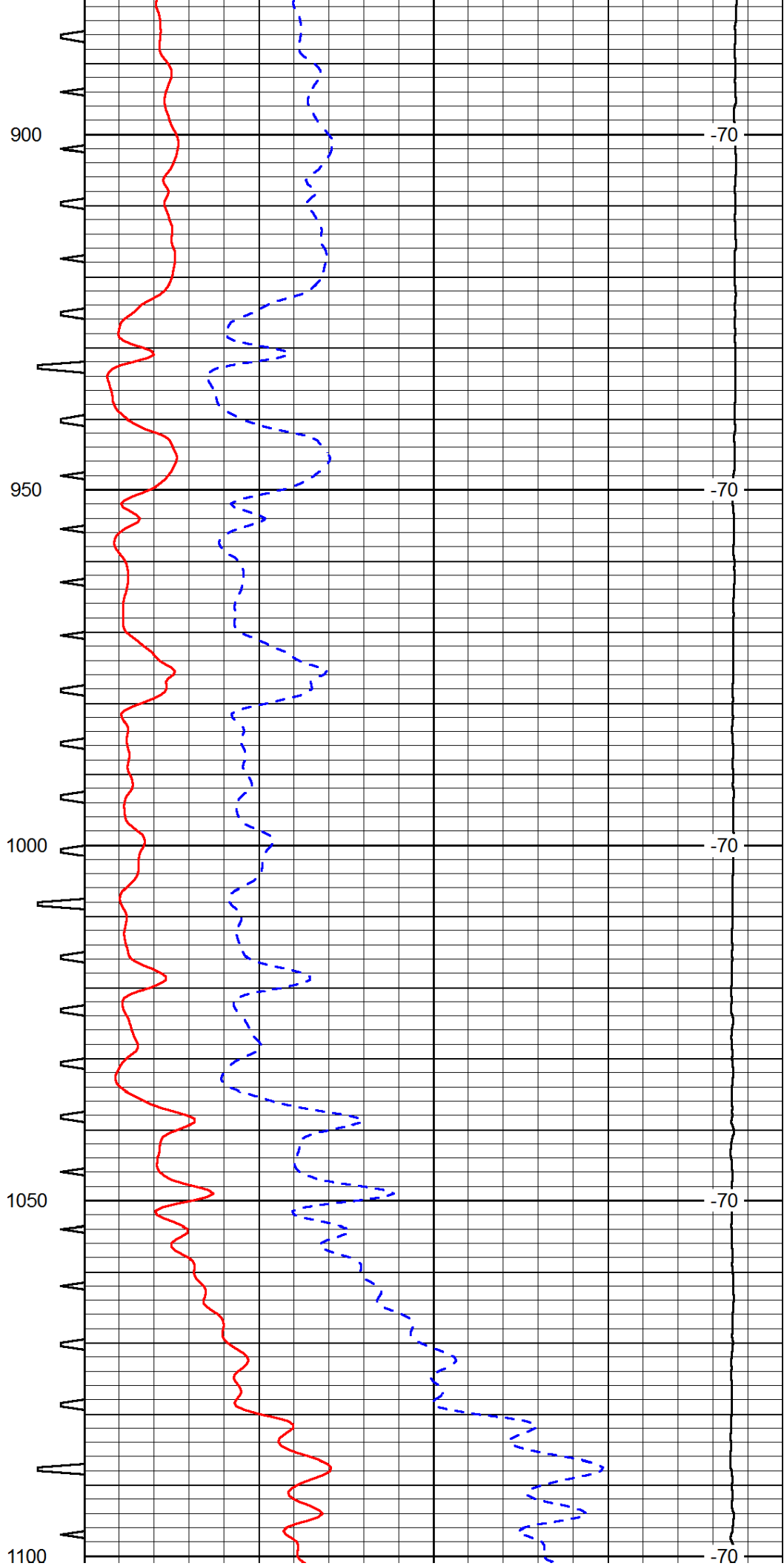
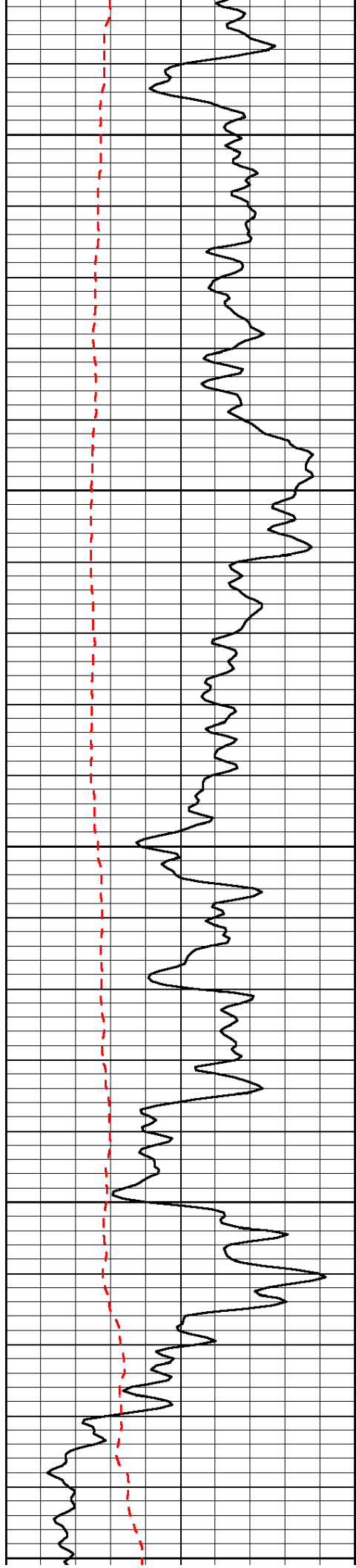
0	Gamma Ray	150	Sonic Int	140	Delta Time (usec/ft)	40
150	Gamma Ray	300	5	0	SPOR	-10
6	Caliper (GAPI)	16		15000	LTEN (lb)	0

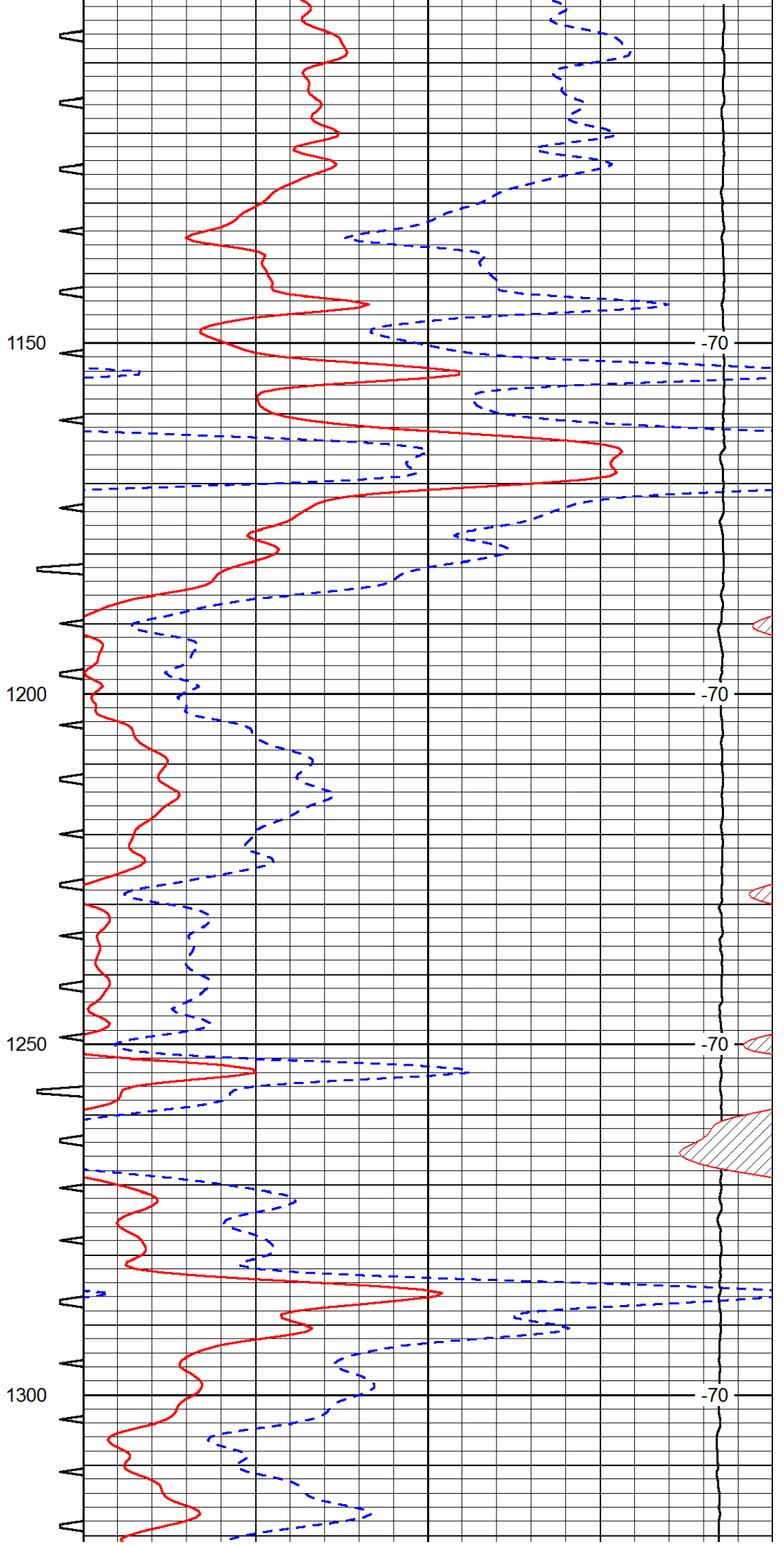
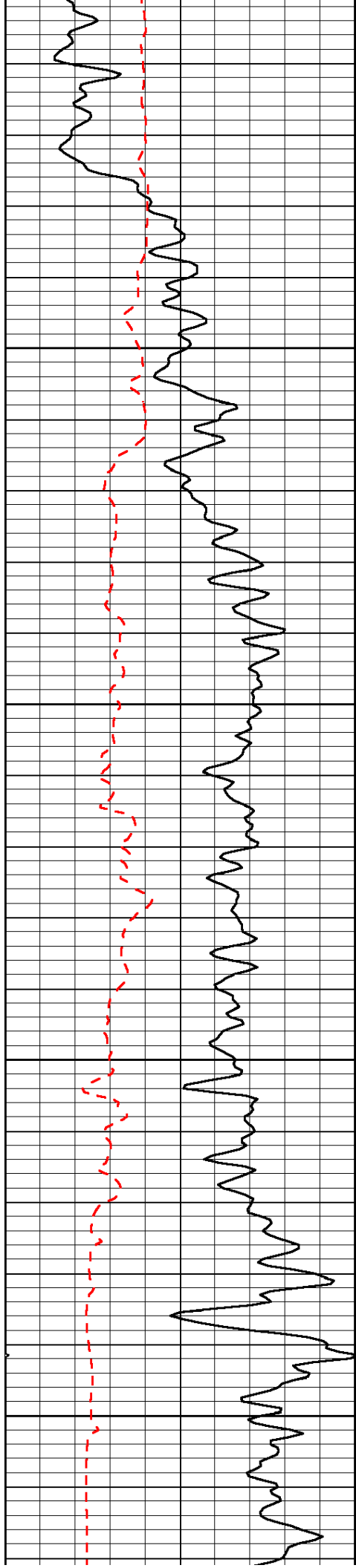
LSPD

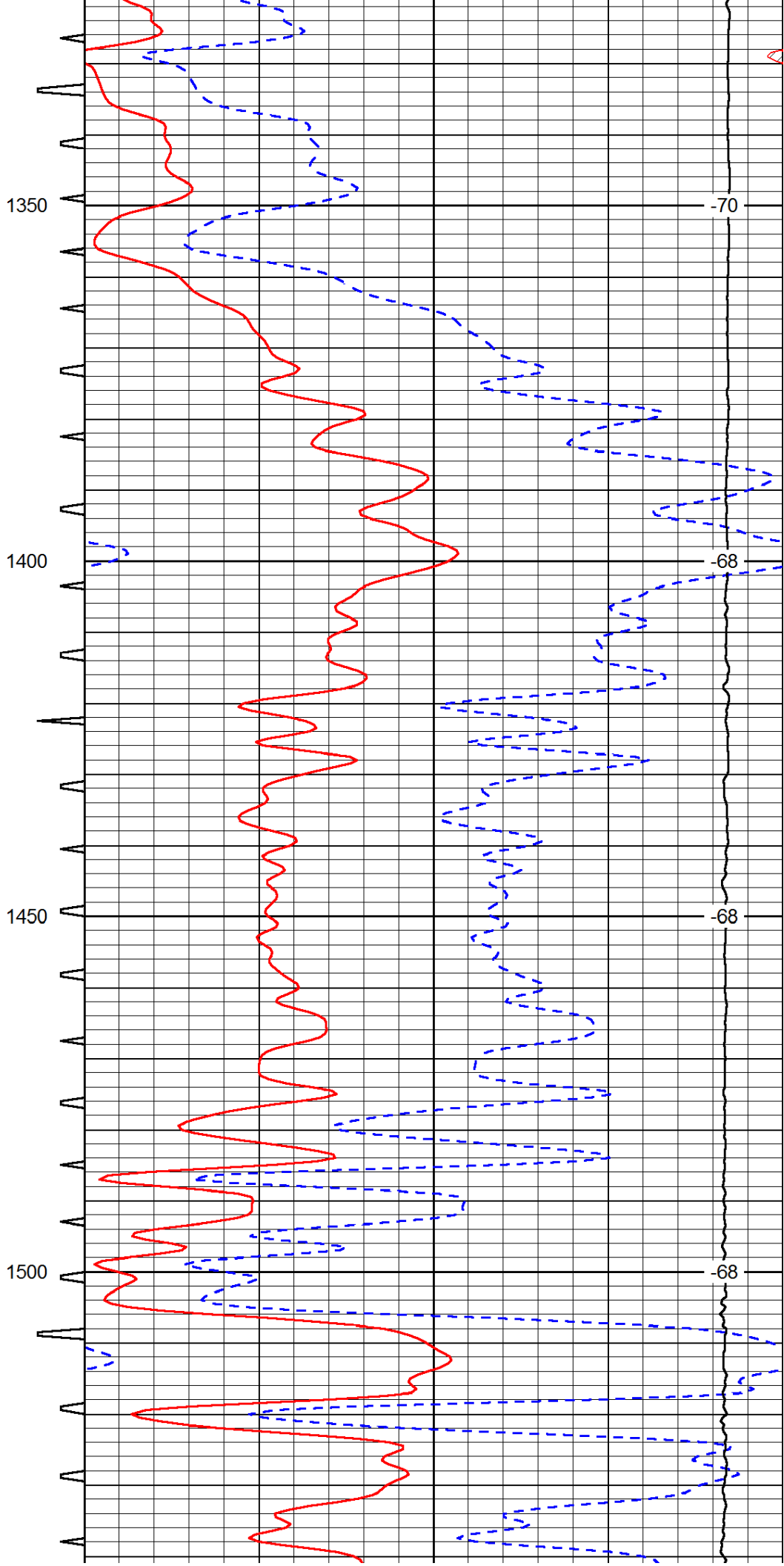
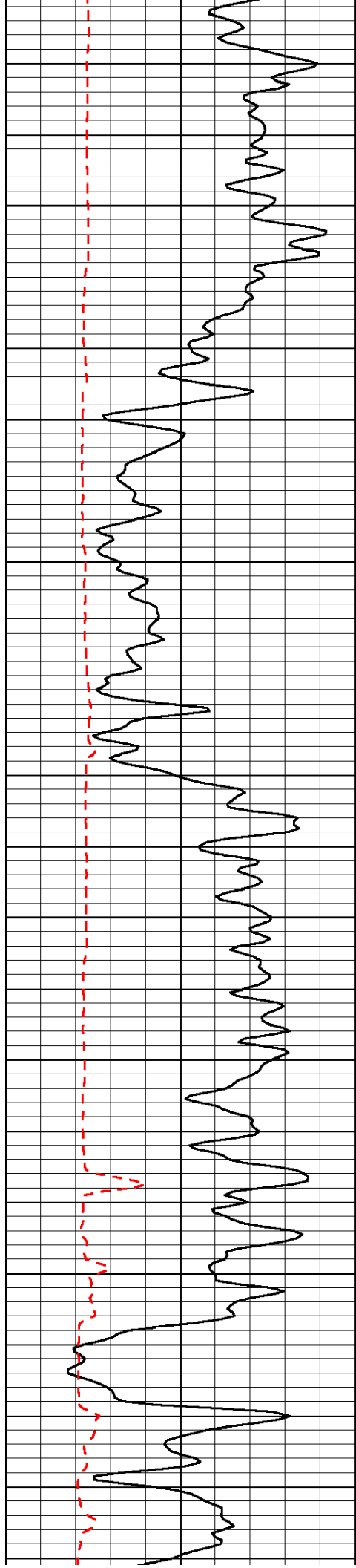


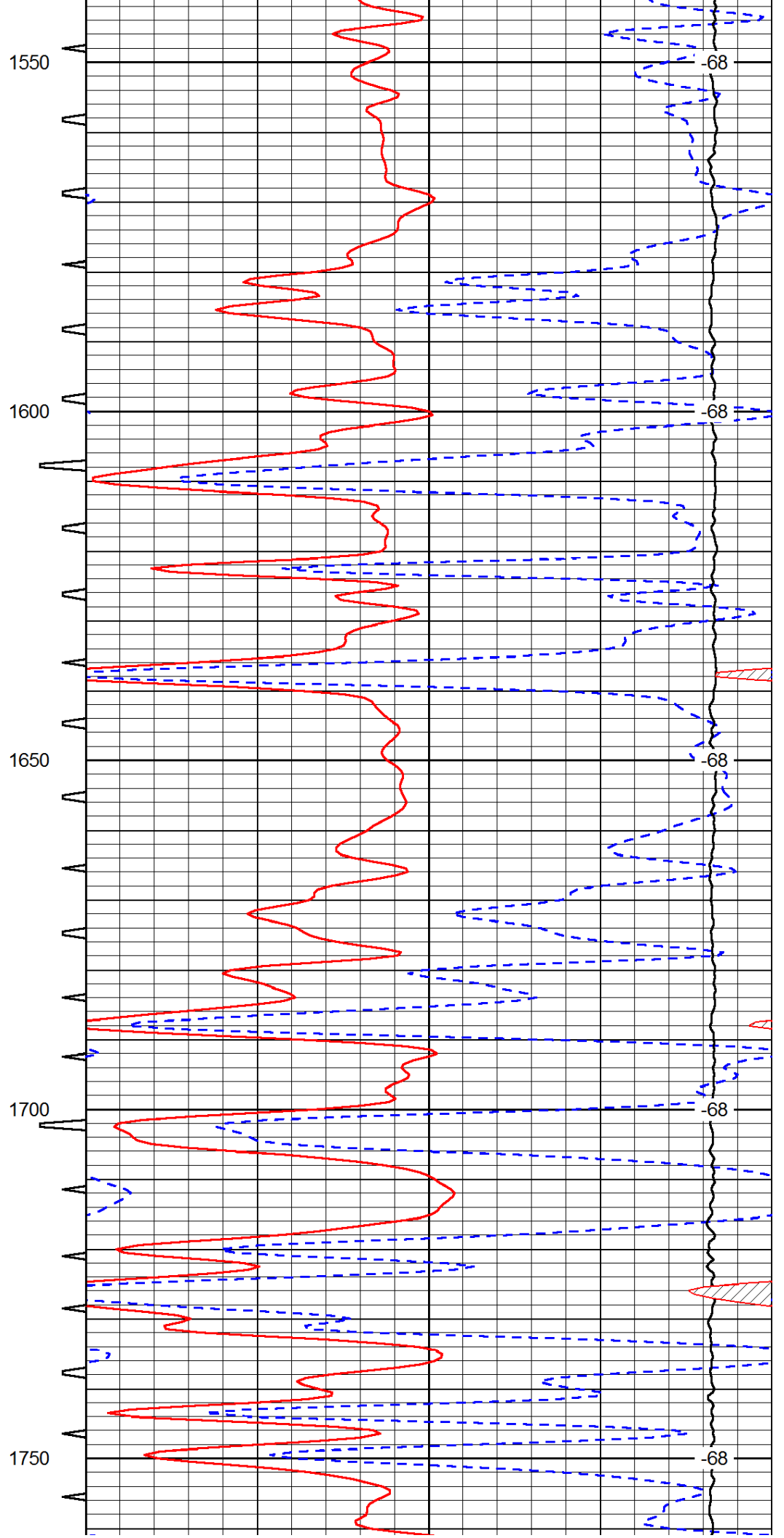
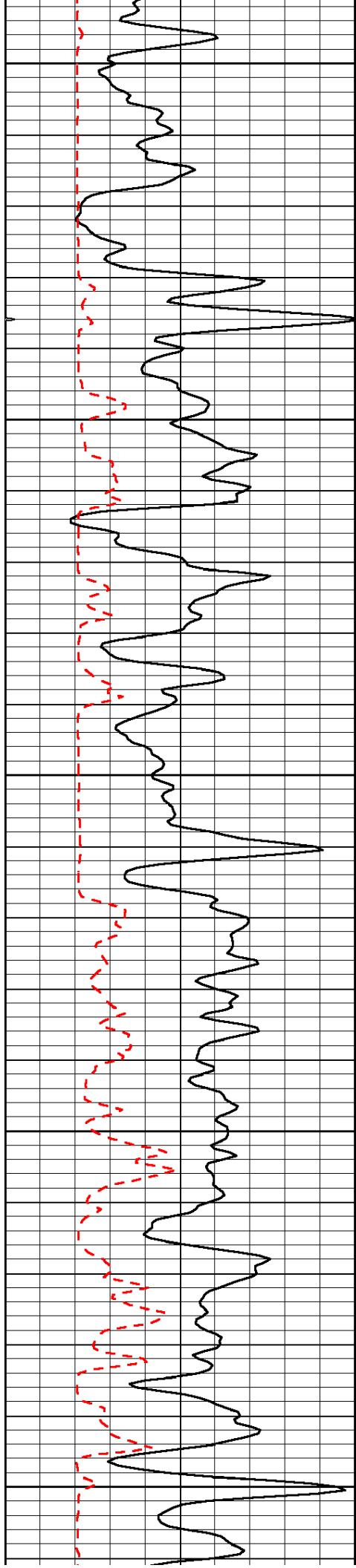


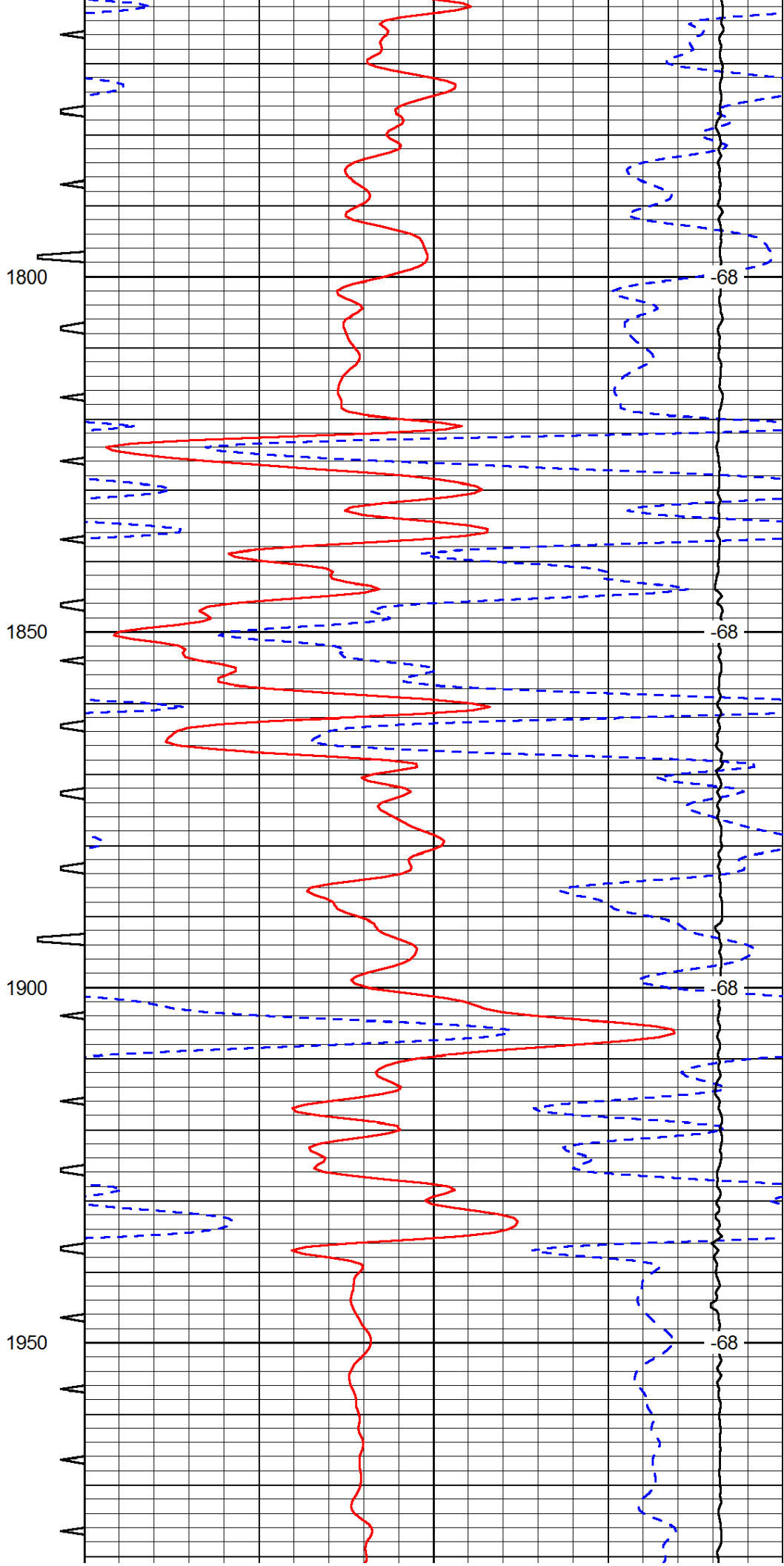
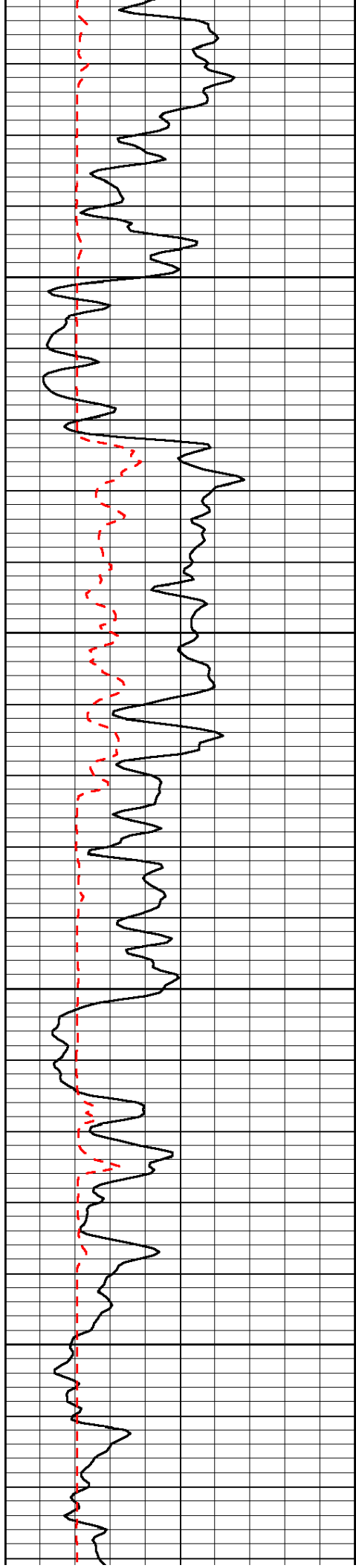


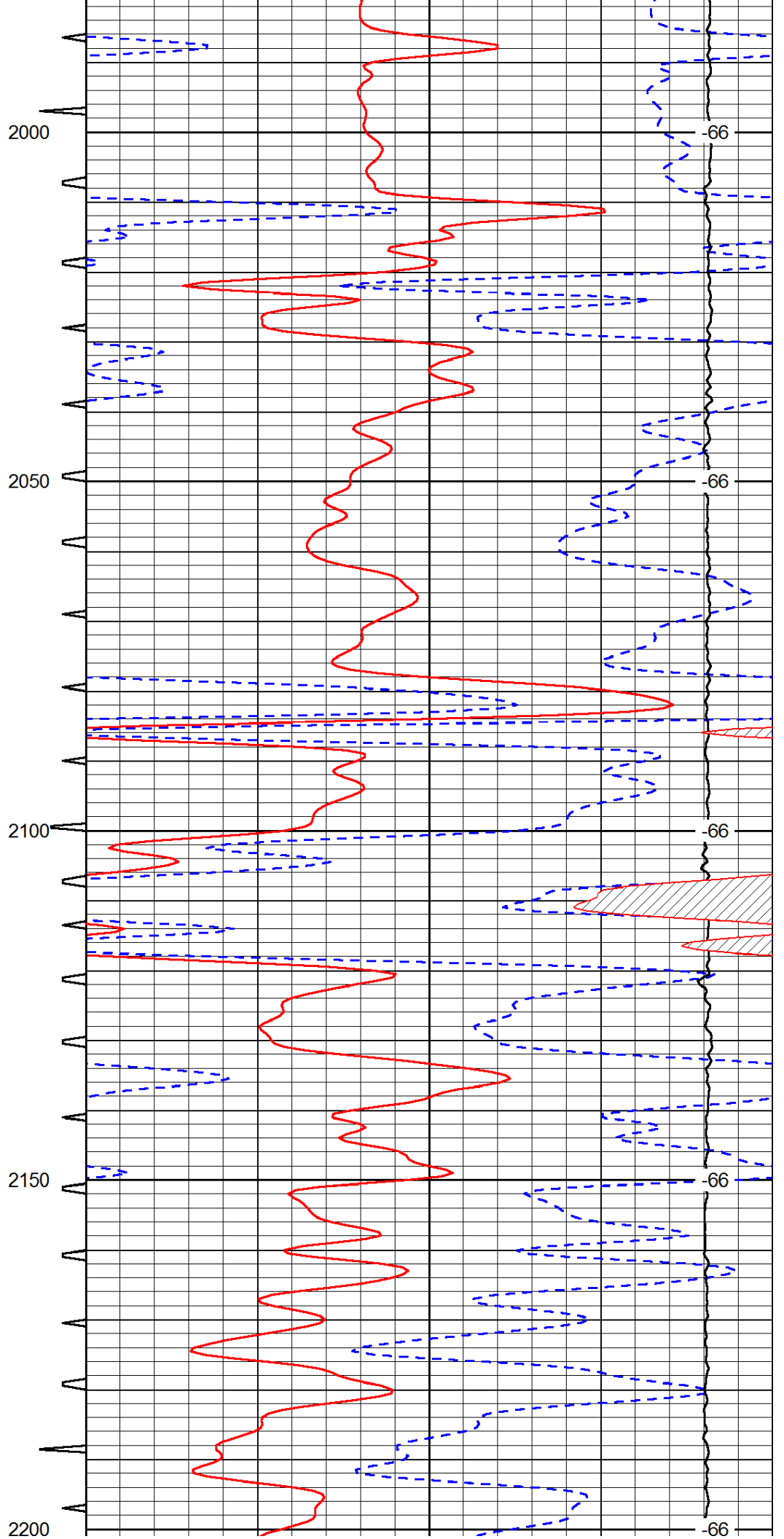
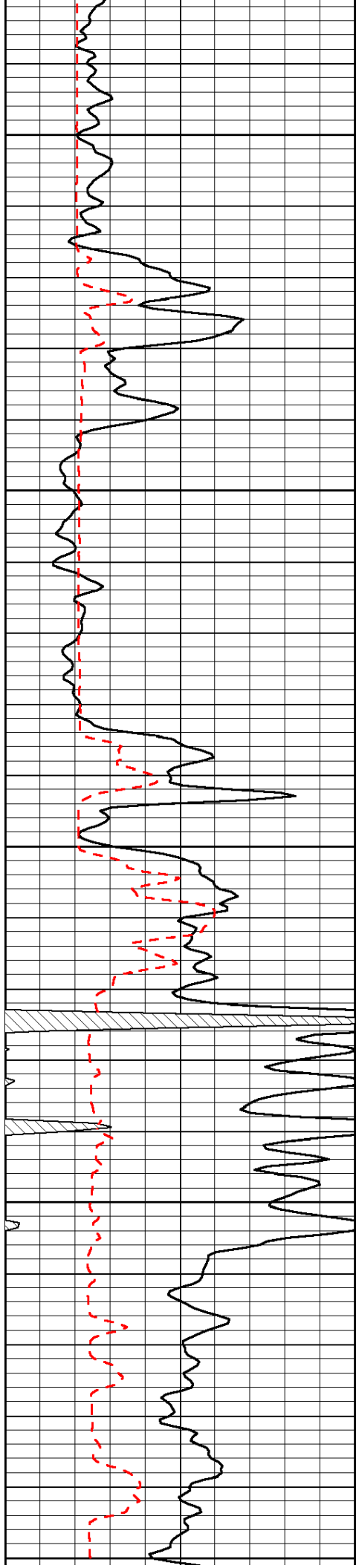


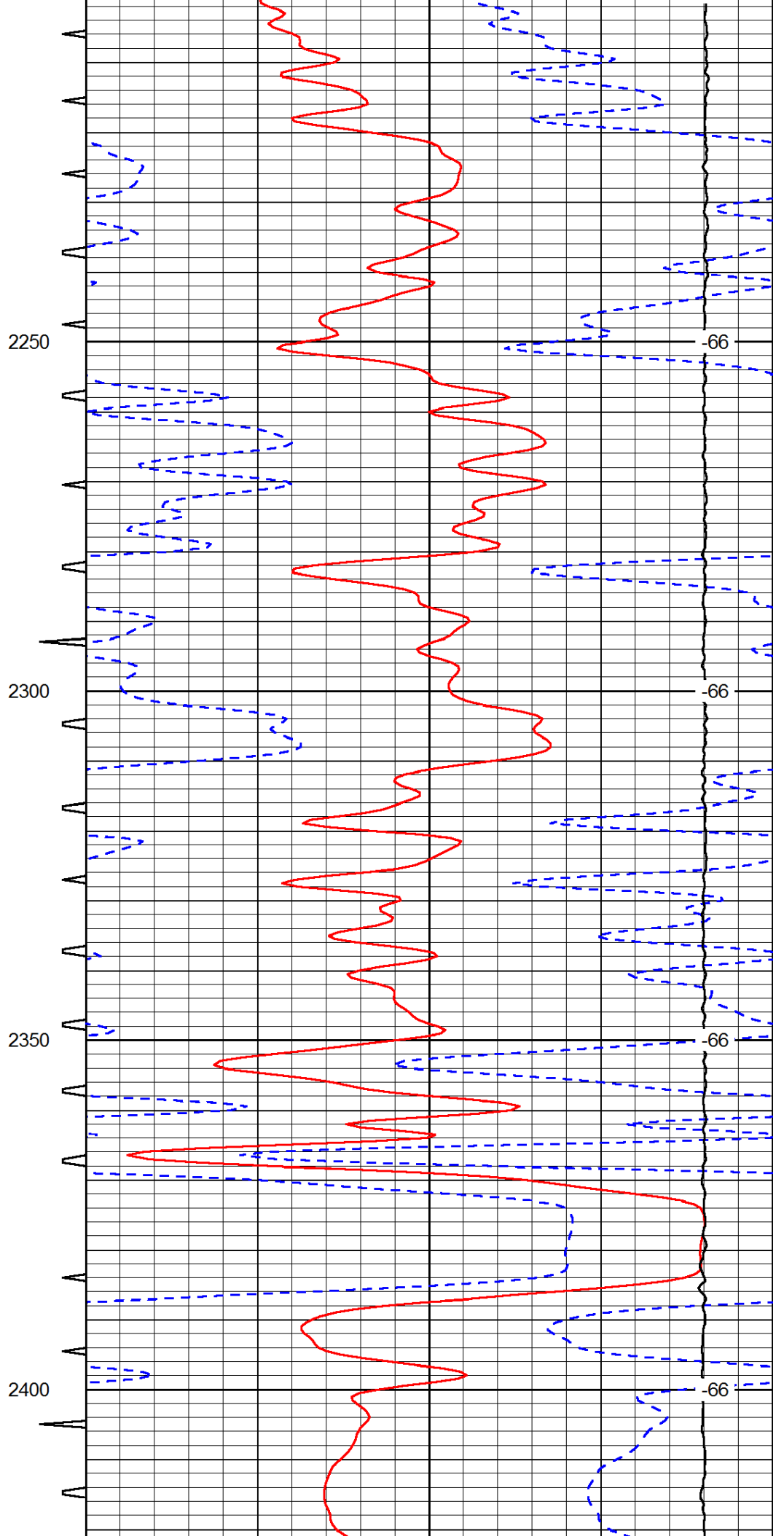
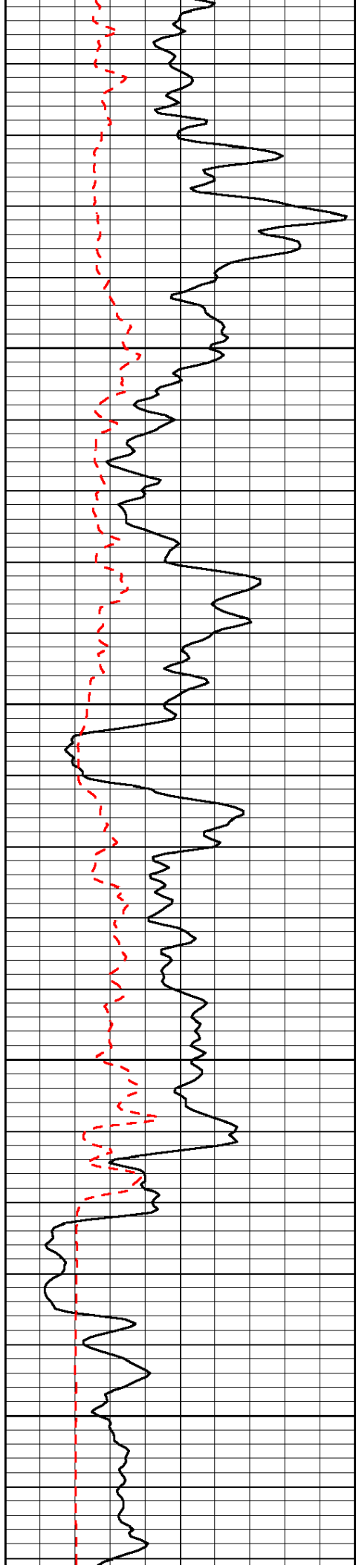


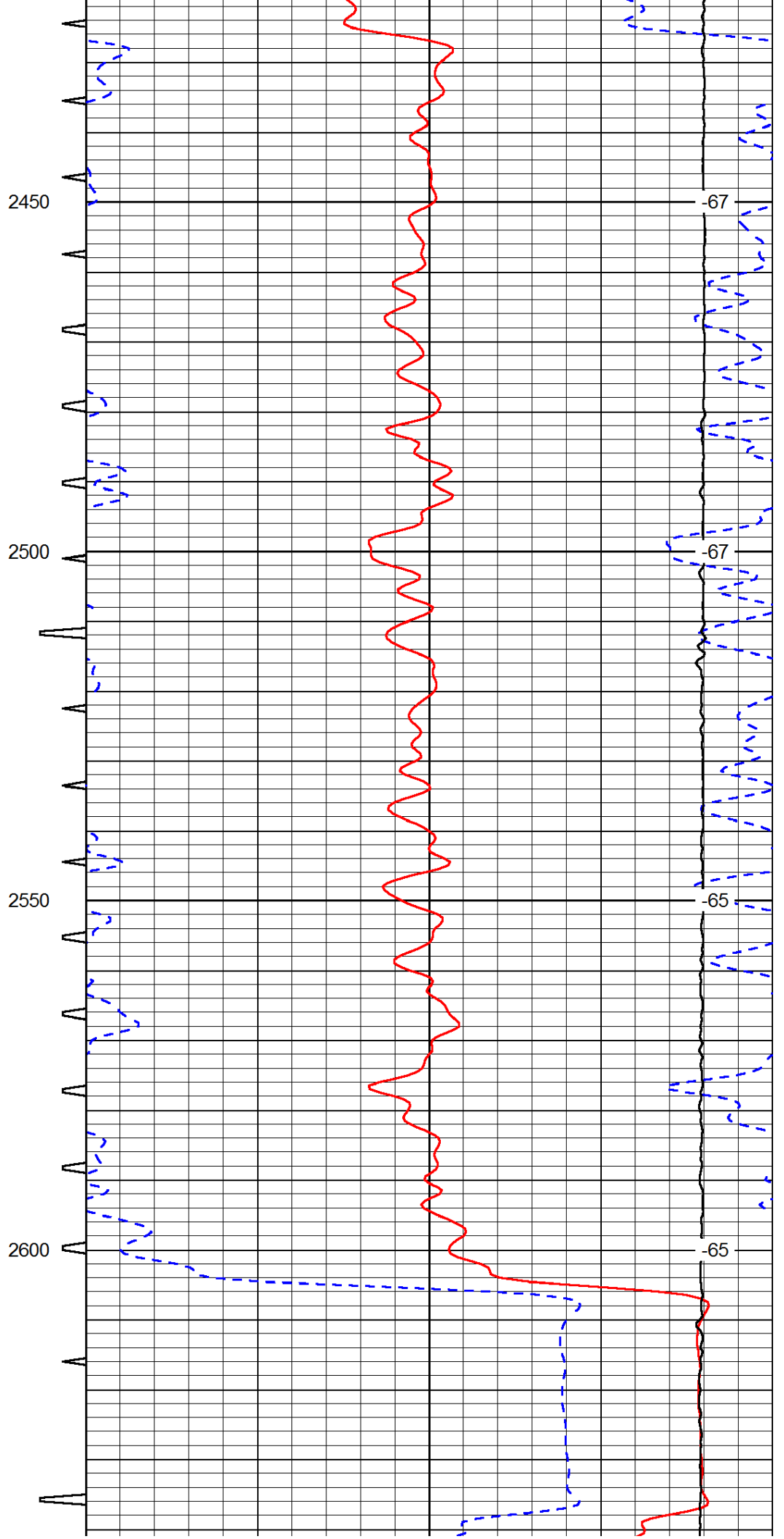
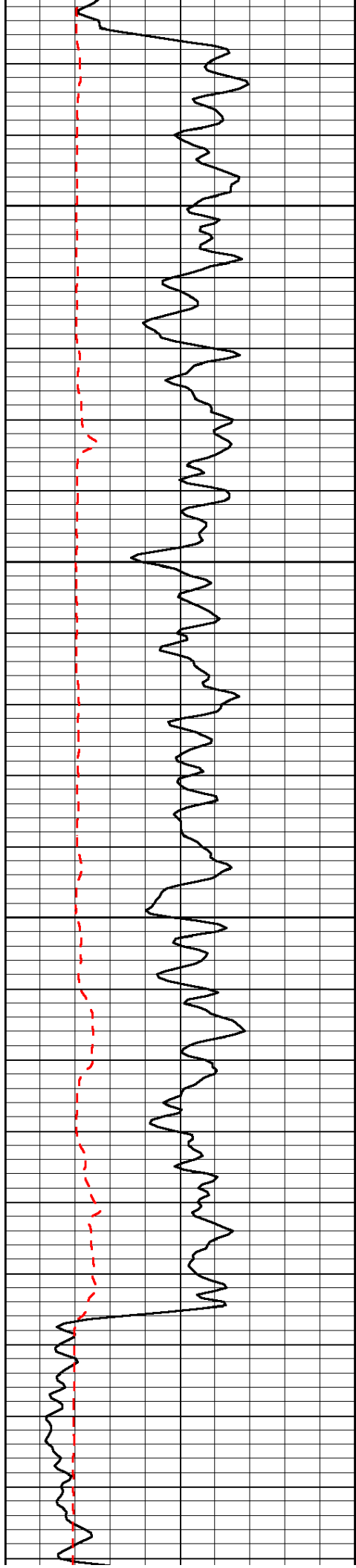


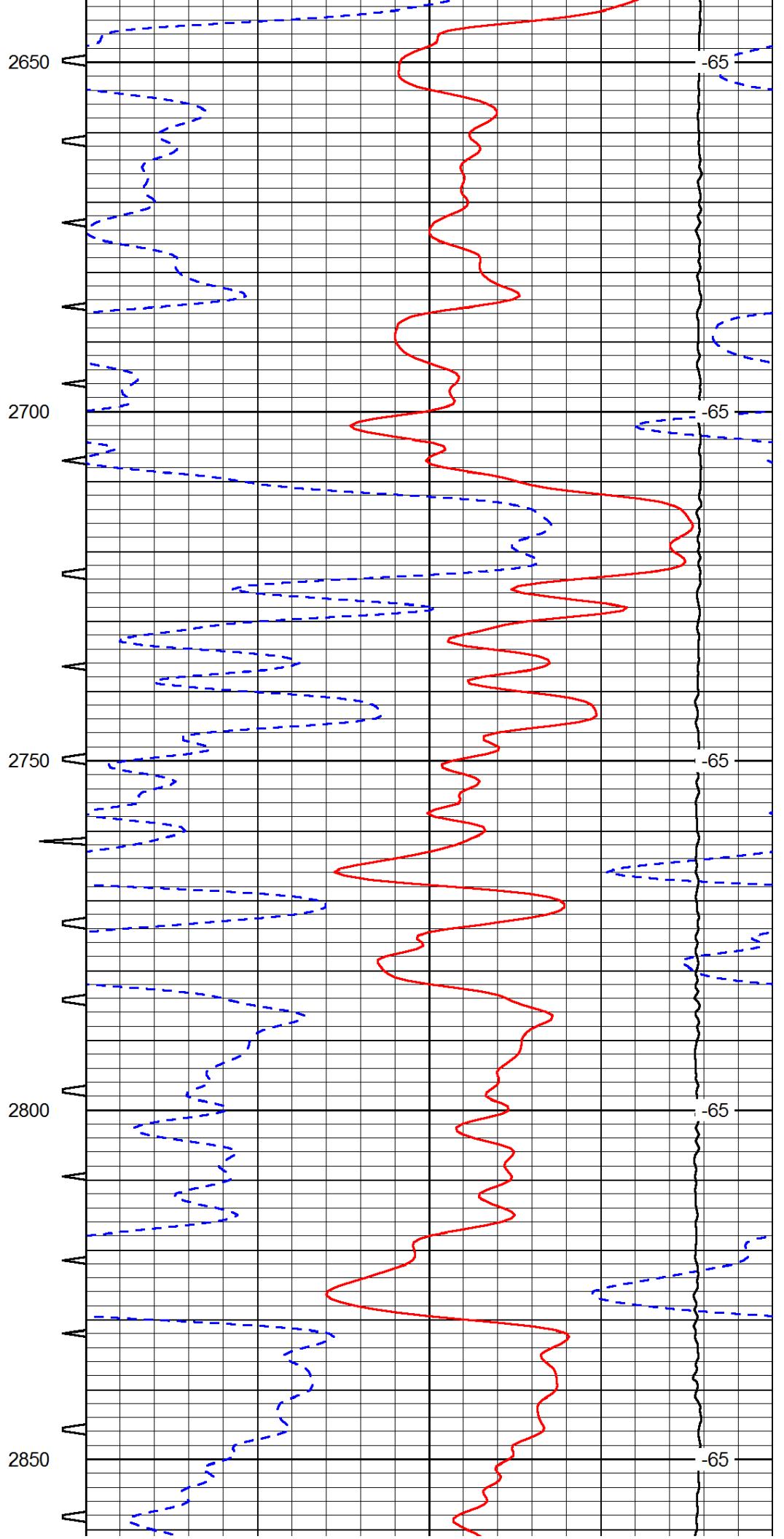
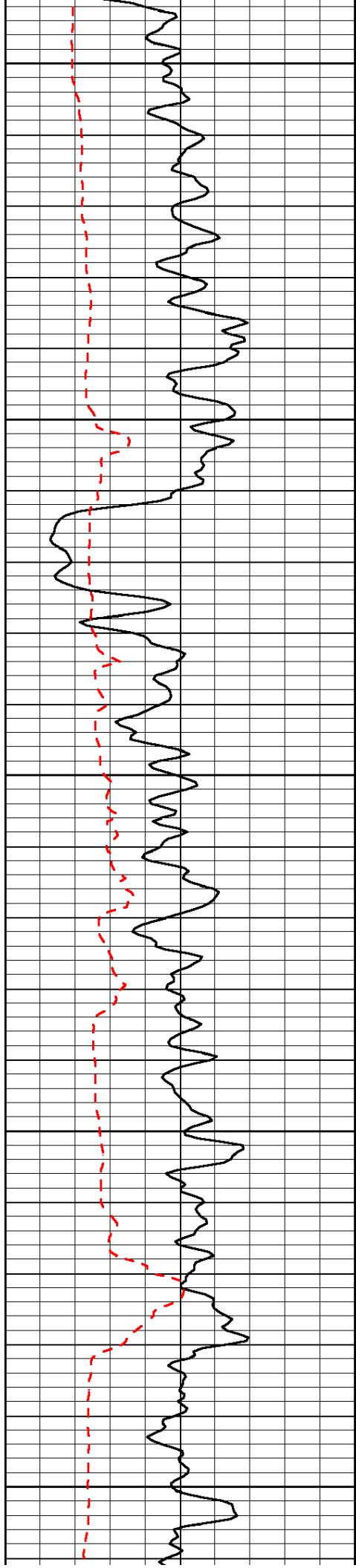


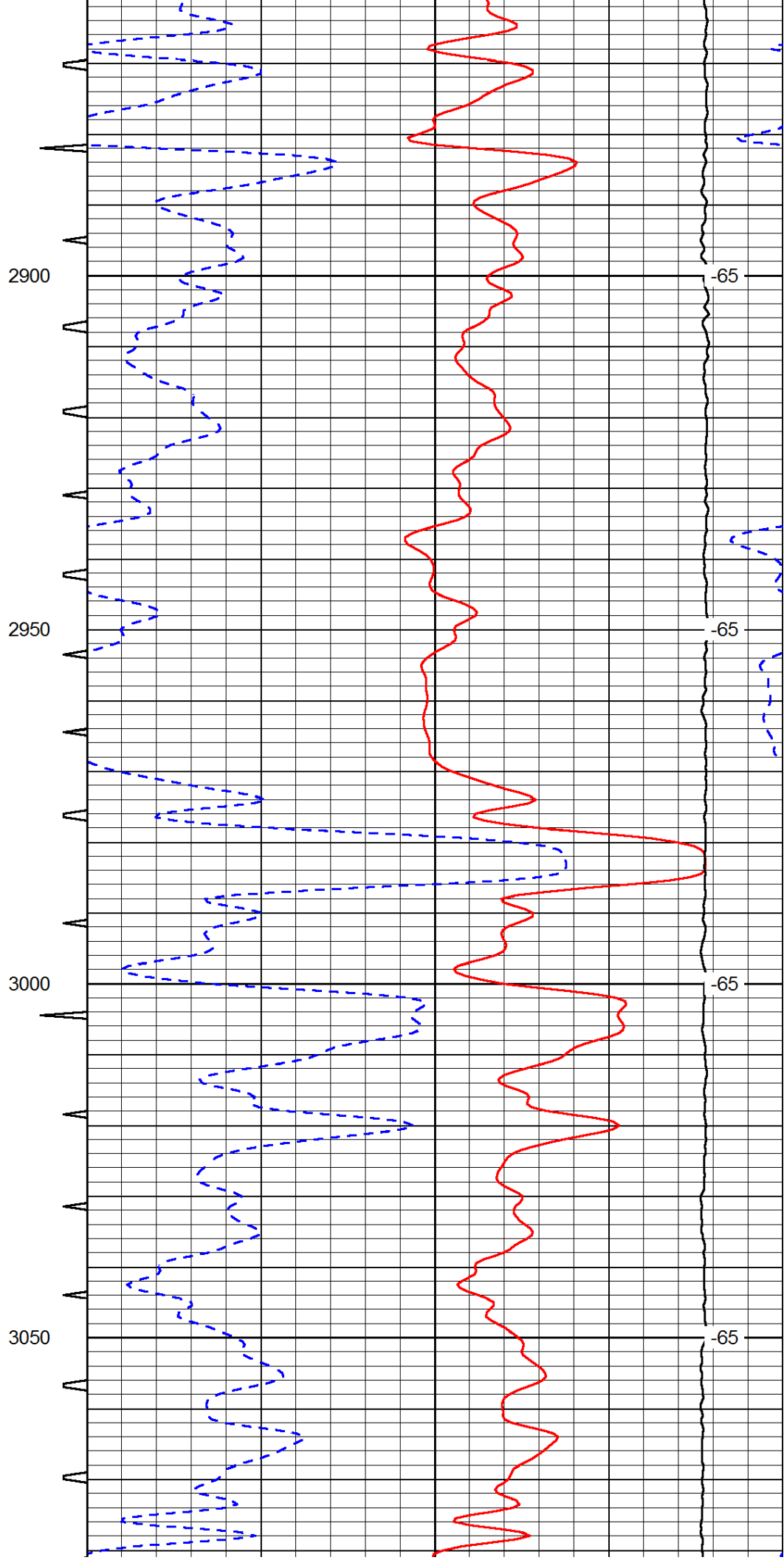
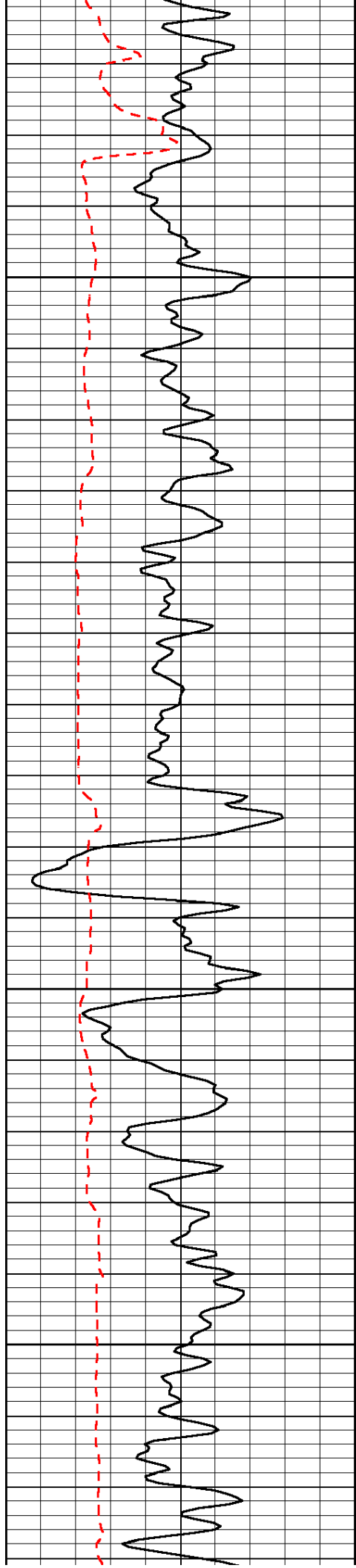


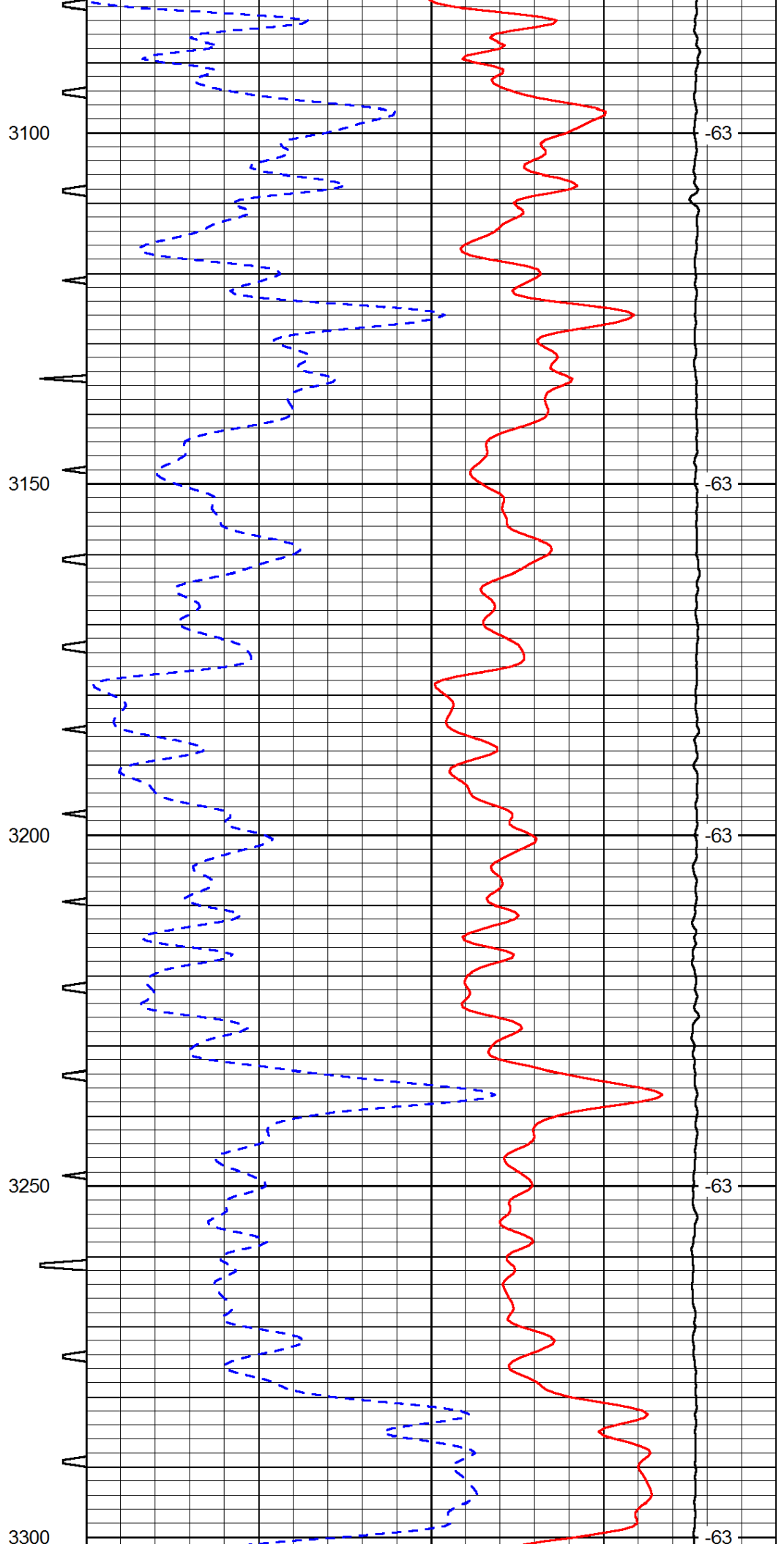
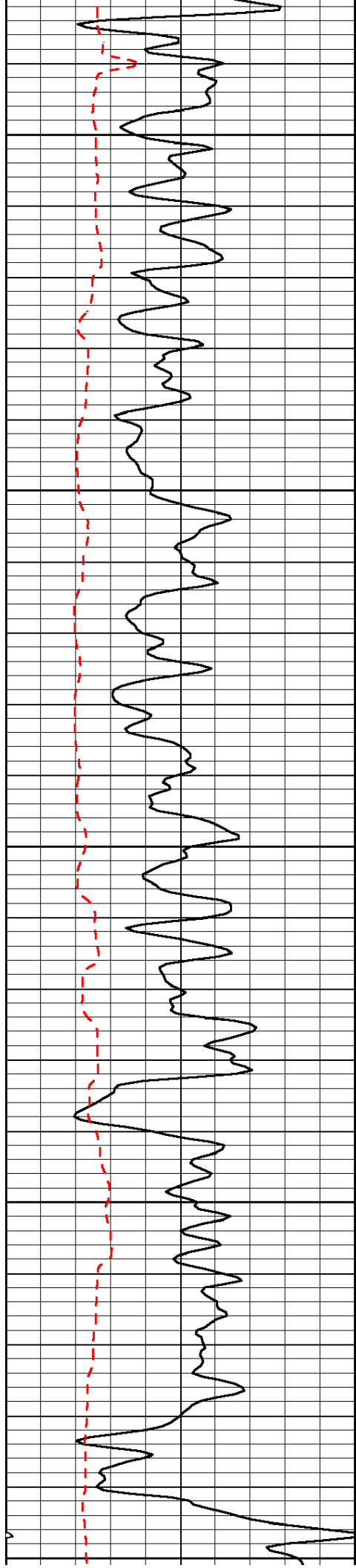


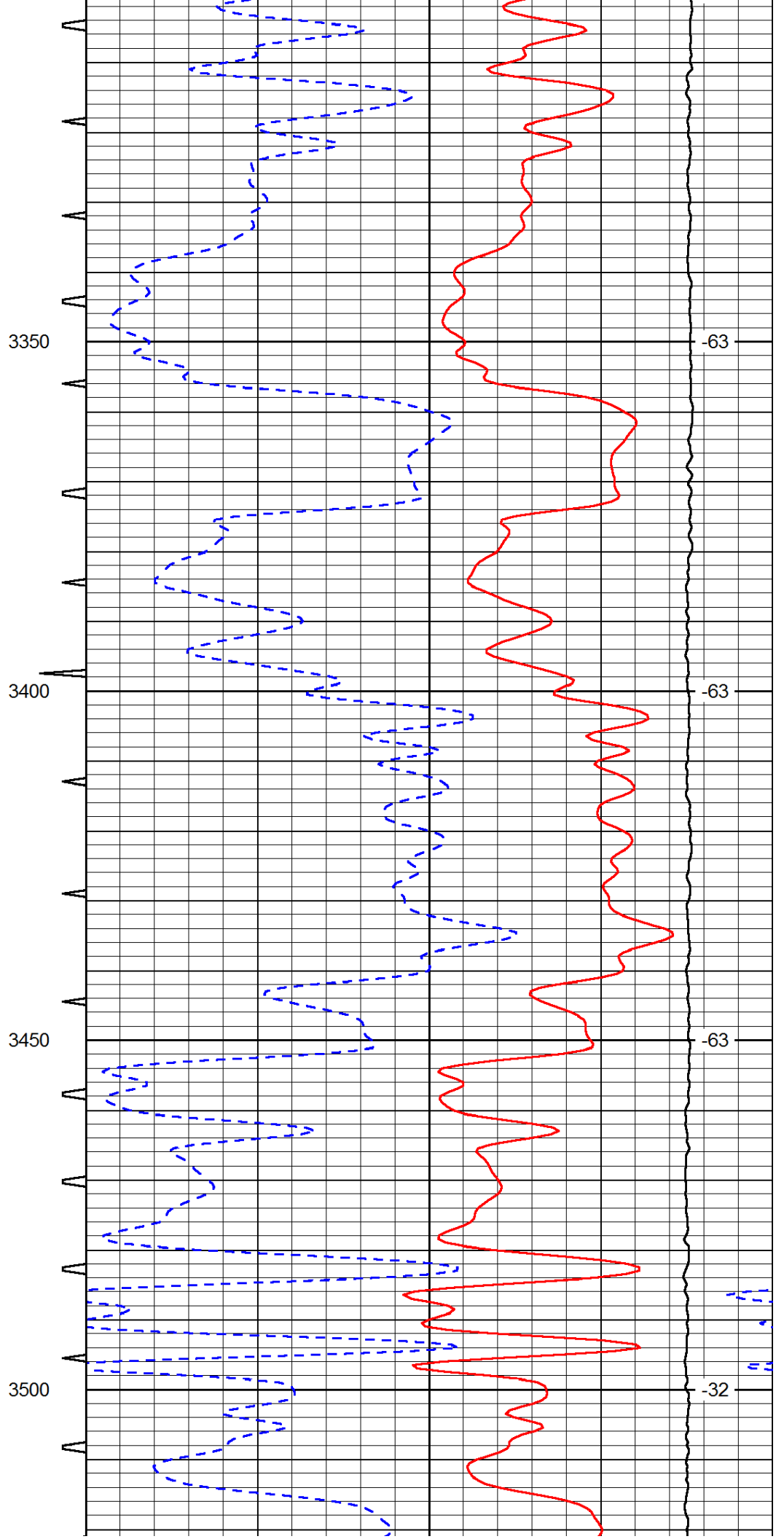
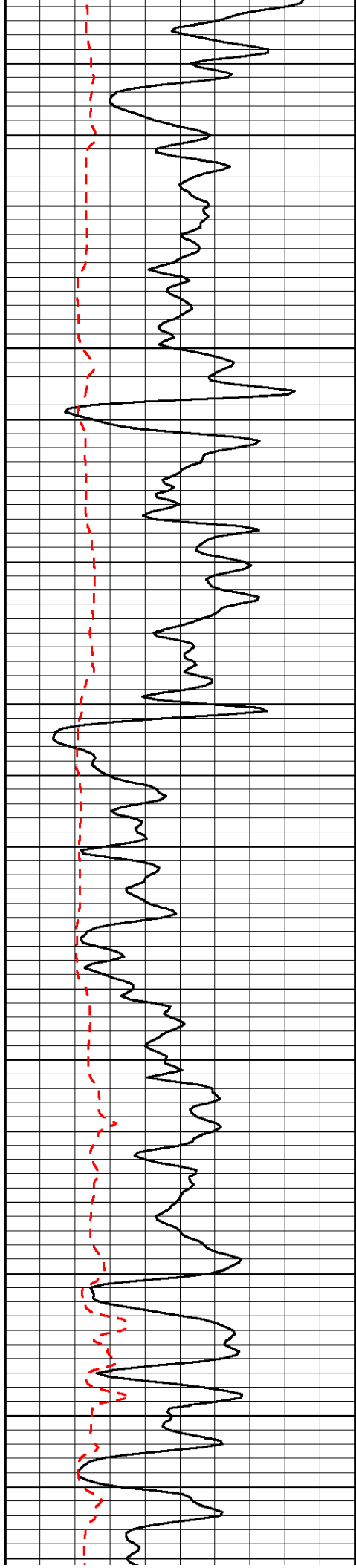


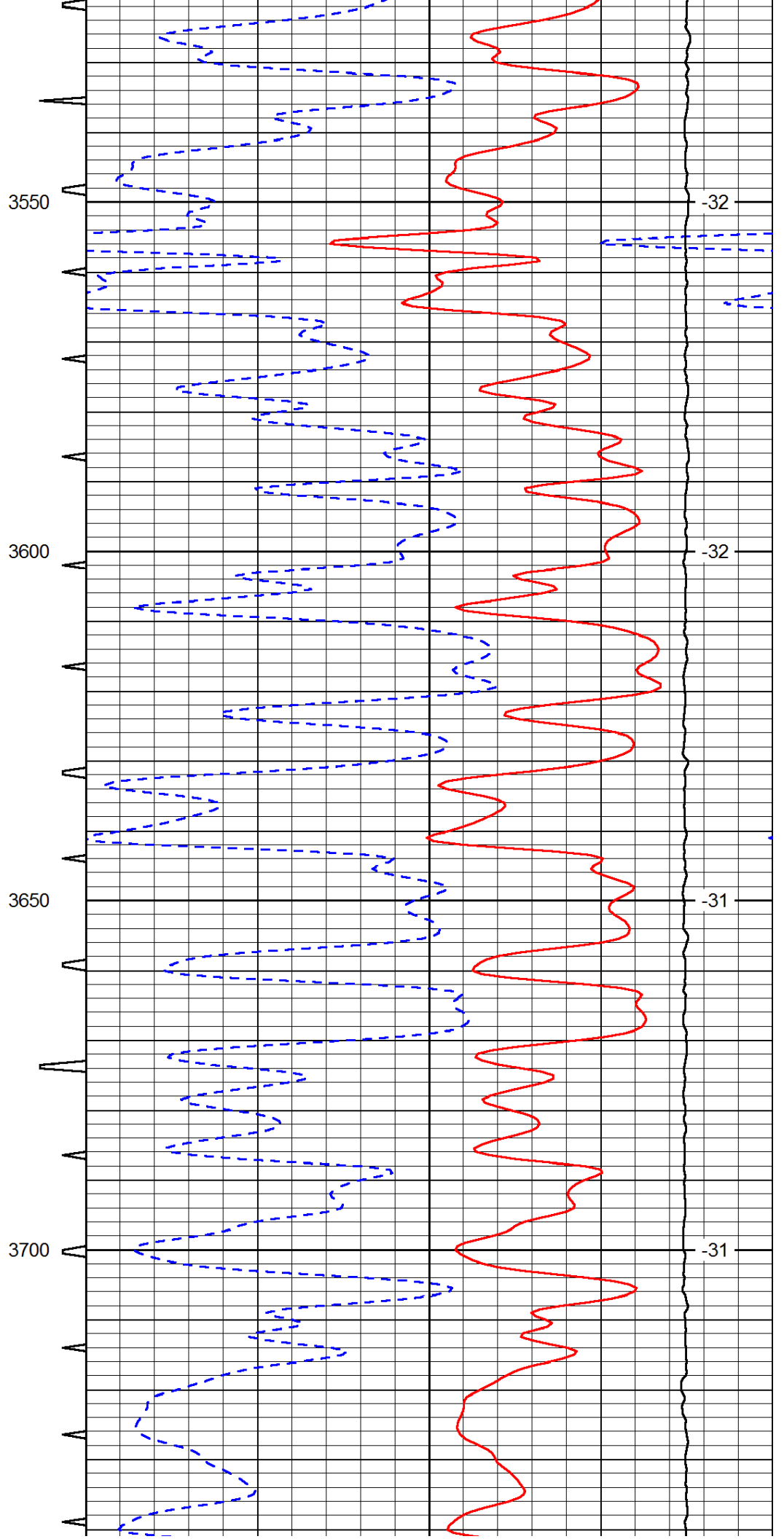
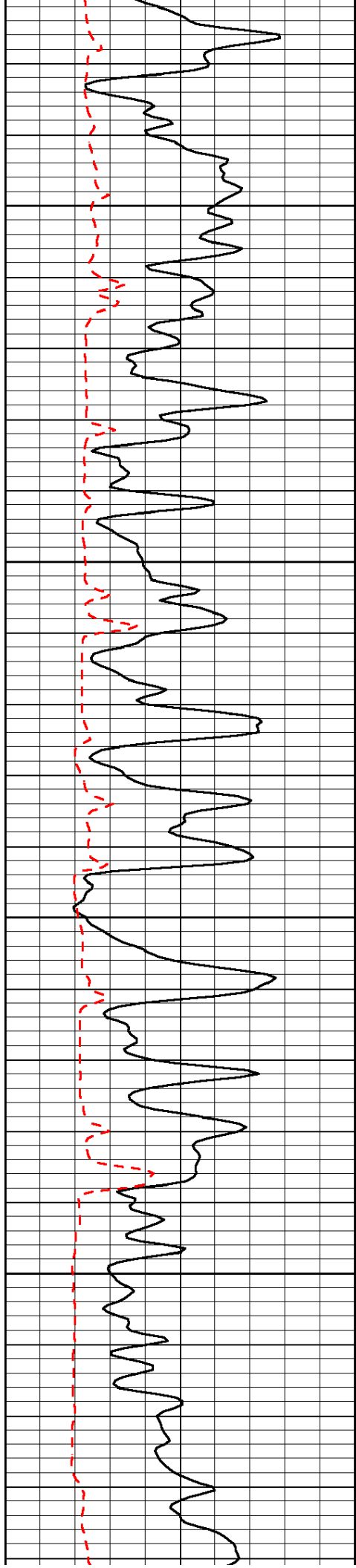


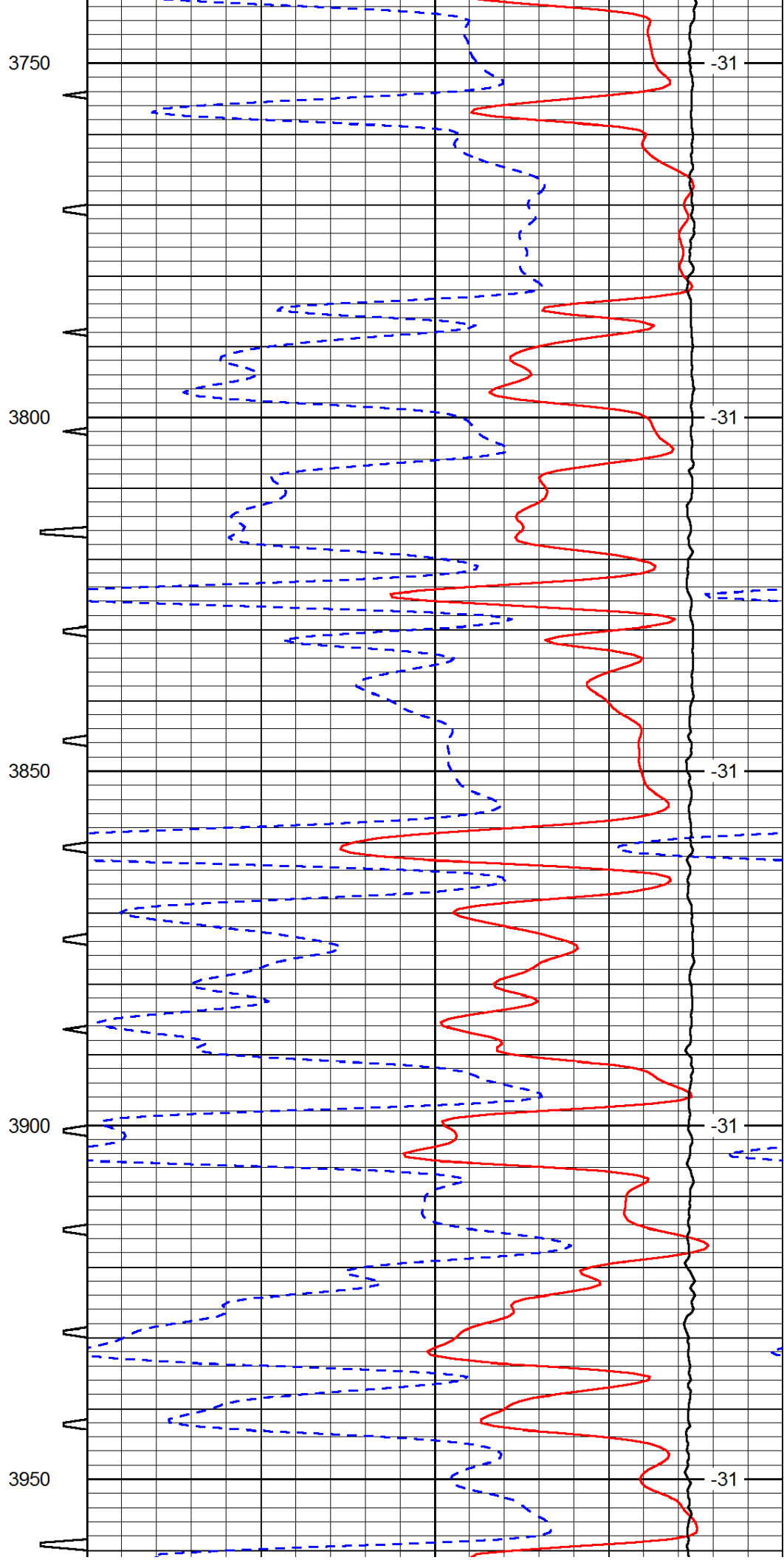
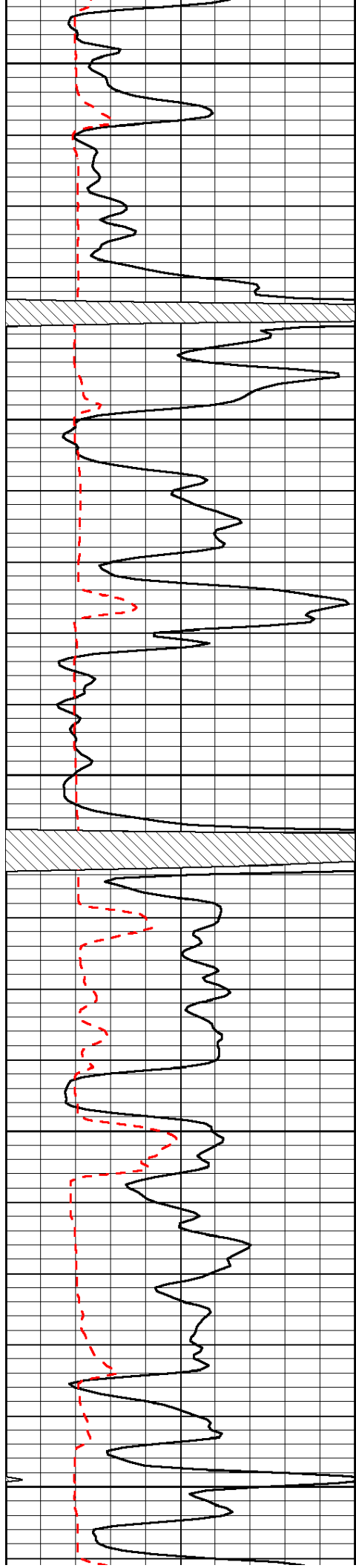


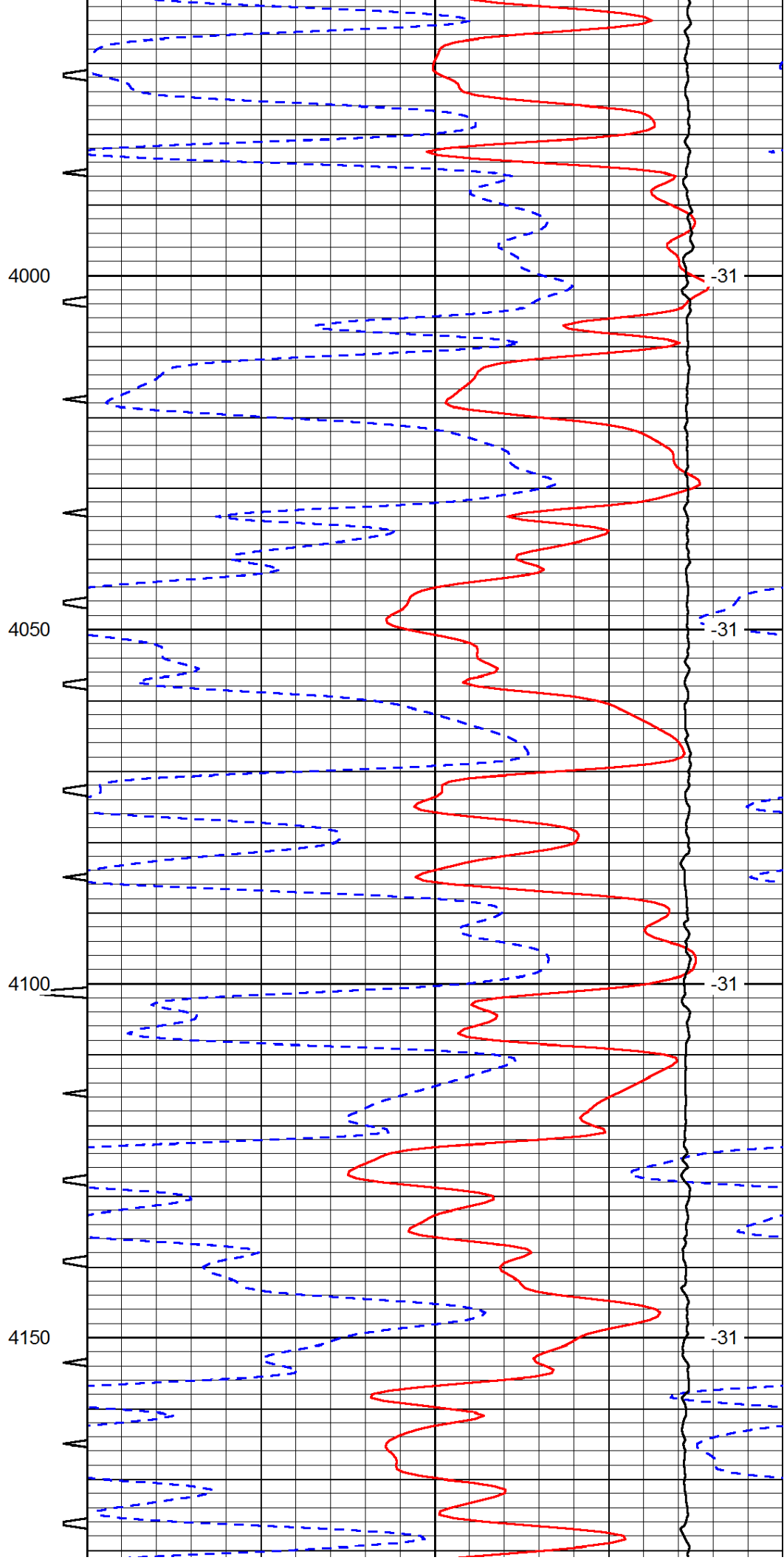
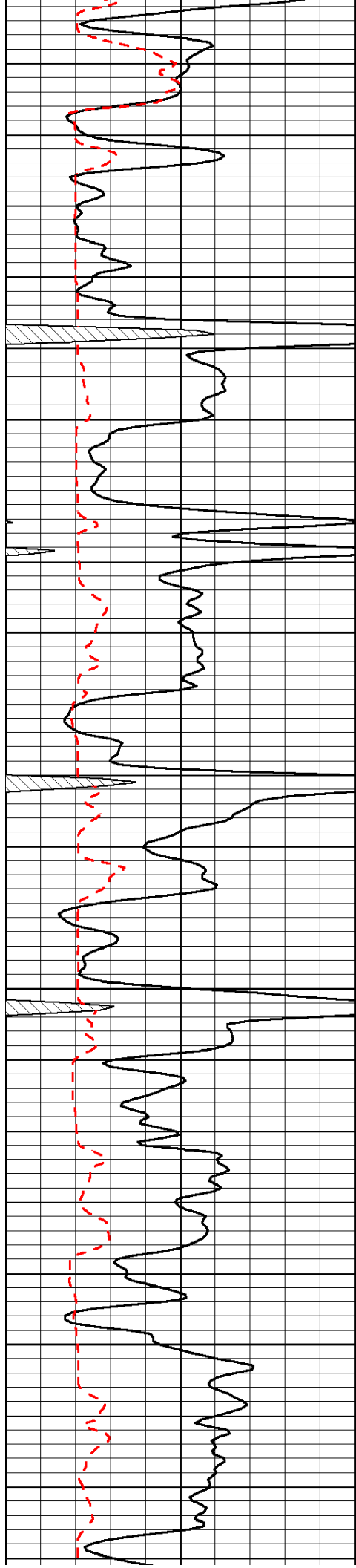


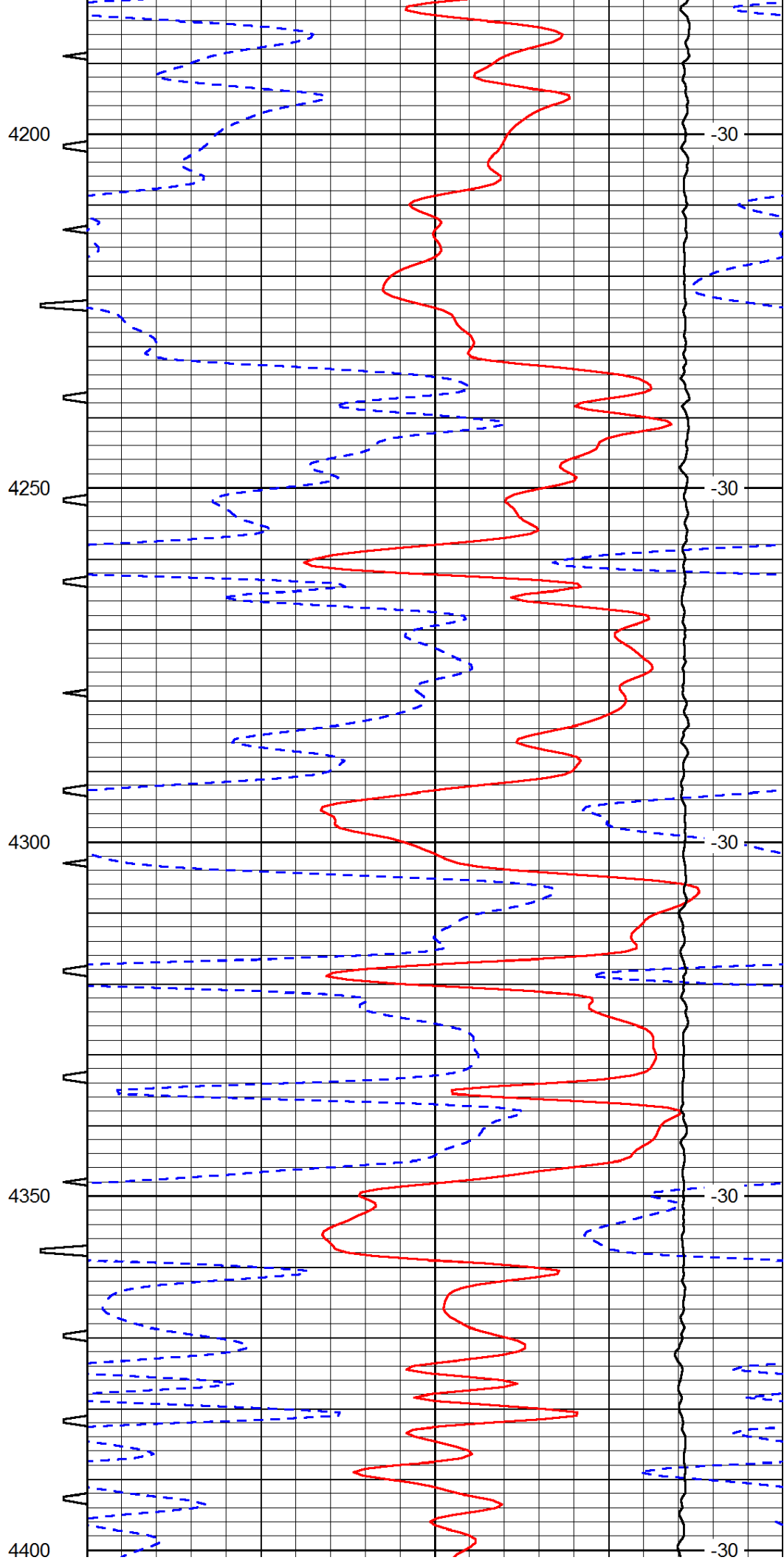
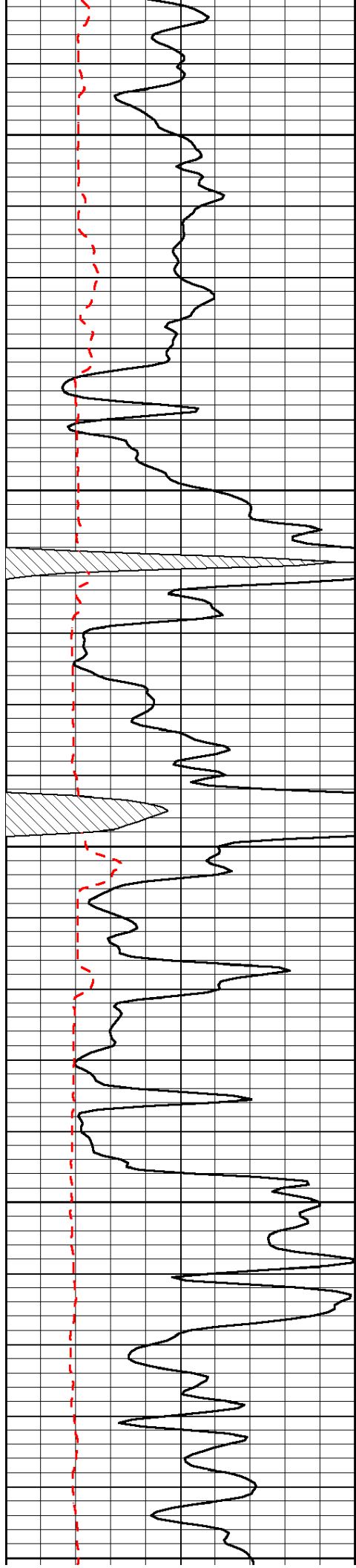


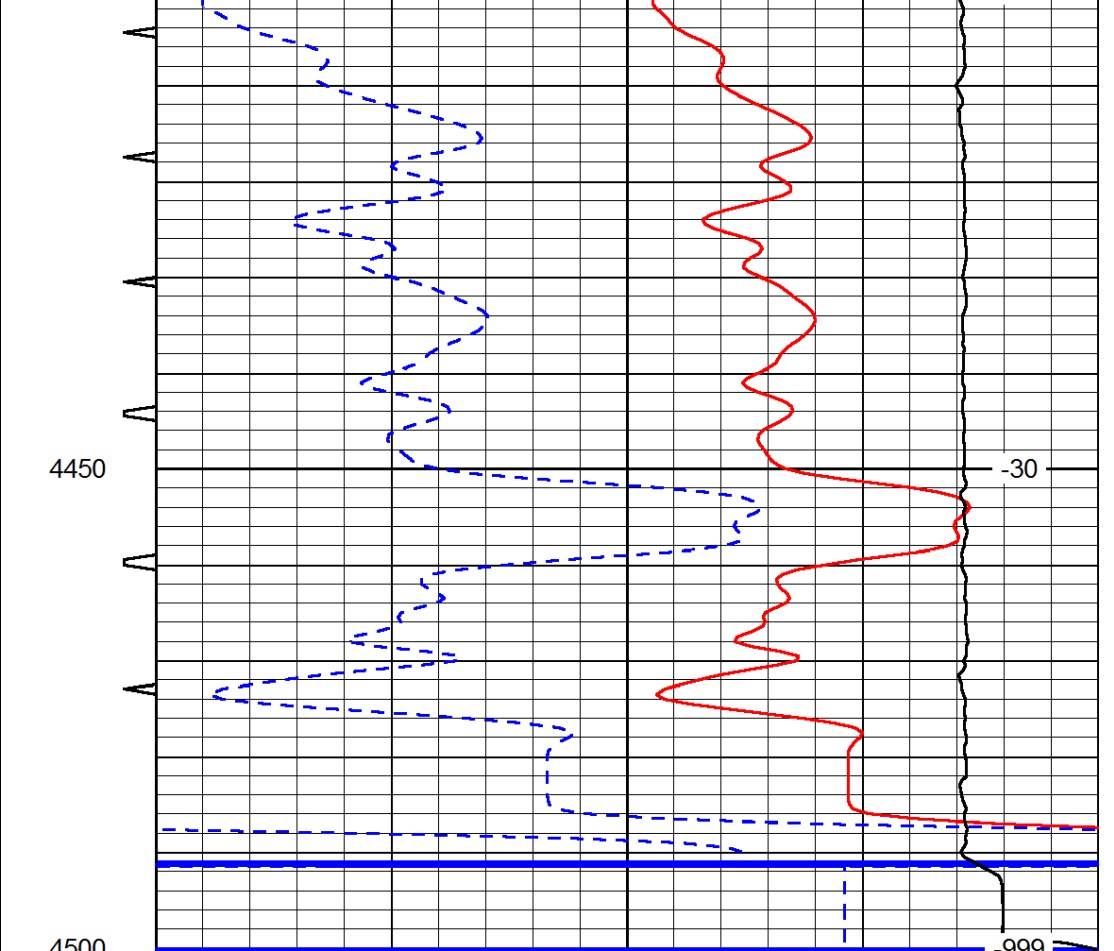
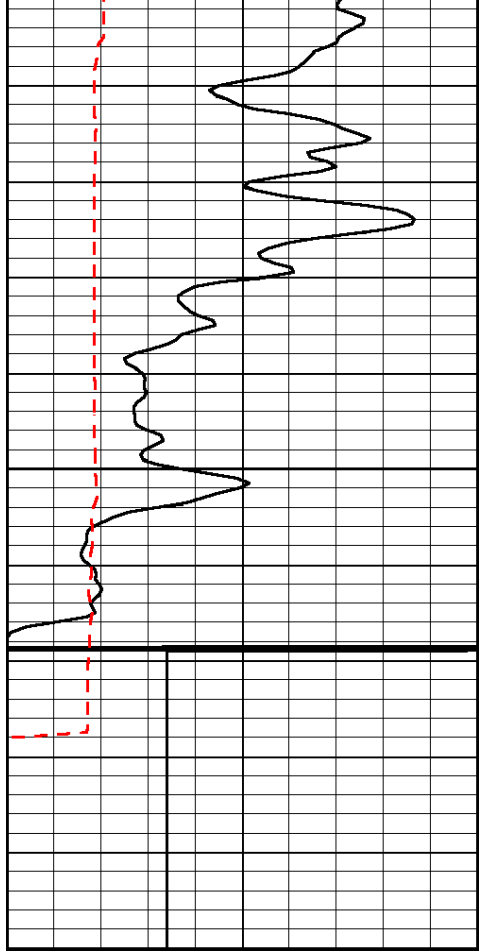












0	Gamma Ray	150	Sonic Int	140	Delta Time (usec/ft)	40
150	Gamma Ray	300	5	0	SPOR	-10
6	Caliper (GAPI)	16		15000	LTEN (lb)	0
LSPD						