



DIGITAL LOG (785) 625-3858

Dual Compensated Porosity Log

15-153-20,899-00-00

API No. 15-153-20,899-00-00

Company **Murfin Drilling Company, Inc.**
 Well **Zola Unit #1-1**
 Field
 County **Rawlins** State **Kansas**

Location **NW NW SE NE
 1400' FNL & 1200' FEL**

Sec: 1 Twp: 5 S Rge: 31 W

Ground Level **Elevation 2866**
 Log Measured From **Kelly Bushing** 5 Ft. Above Perm. Datum
 Drilling Measured From **Kelly Bushing**

Other Services
 DIL
 MEL/BHCS

Elevation
 K.B. 2871
 D.F.
 G.L. 2866

Date	5/3/2012						
Run Number	One						
Type Log	CNL / CDL						
Depth Driller	4490						
Depth Logger	4492						
Bottom Logged Interval	4471						
Top Logged Interval	3550						
Type Fluid In Hole	Chemical						
Salinity, PPM CL	1500						
Density	9.3						
Level	Full						
Max. Rec. Temp. F	121						
Operating Rig Time	4 1/2 Hours						
Equipment -- Location	15 Hays						
Recorded By	D Kerr						
Witnessed By	Milkeal K. Maune						
Borehole Record			Casing Record				
Run No.	Bit	From	To	Size	Wgt.	From	To
1	12.25	00	220	8.625	24#	00	220
2	7.875	220	4490				

<<< Fold Here >>>

All interpretations are opinions based on inferences from electrical or other measurements and we cannot and do not guarantee the accuracy or correctness of any interpretation, and we shall not, except in the case of gross or willful negligence on our part, be liable or responsible for any loss, costs, damages, or expenses incurred or sustained by anyone resulting from any interpretation made by any of our officers, agents or employees. These interpretations are also subject to our general terms and conditions set out in our current Price Schedule.

Comments

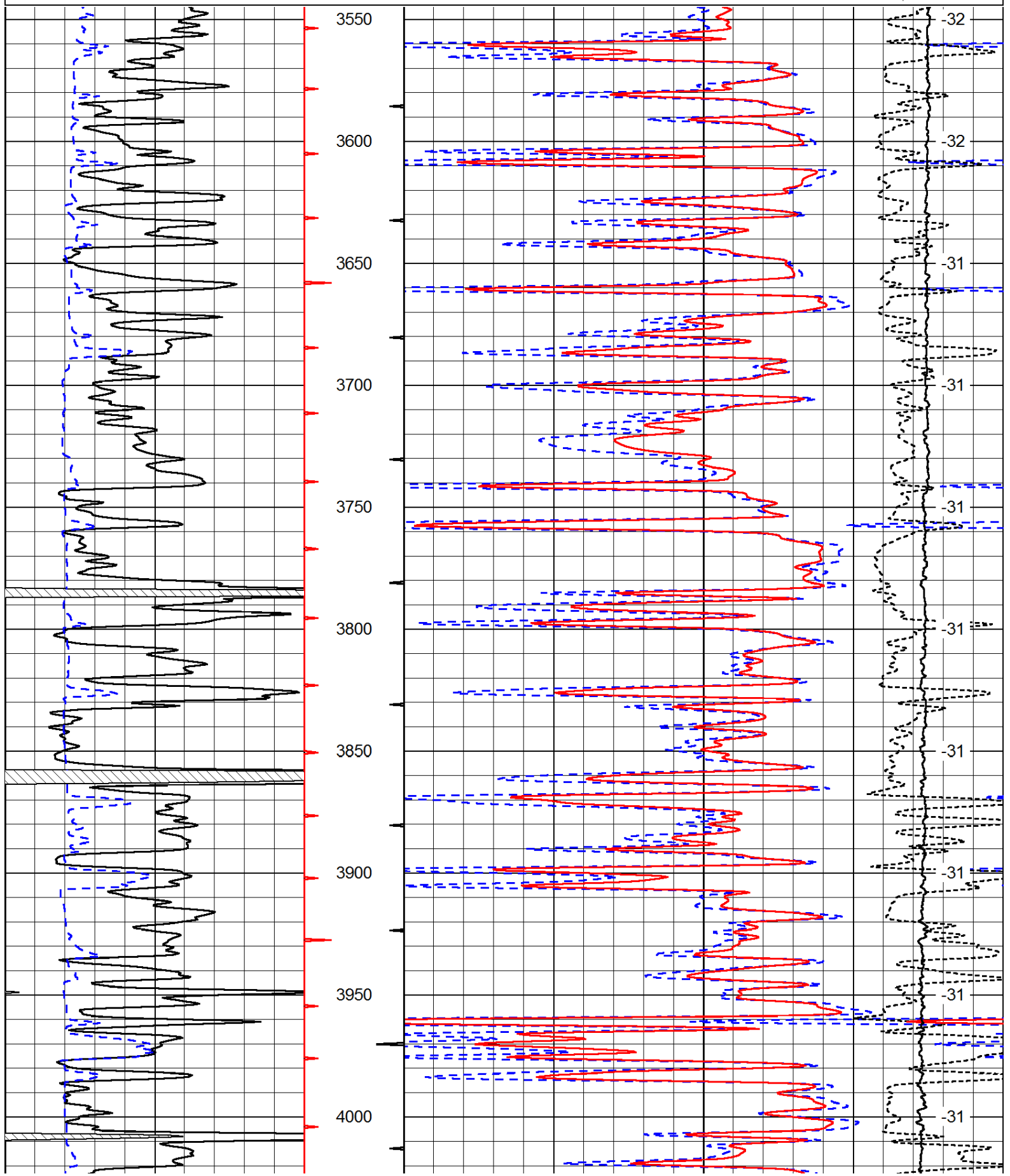
Thank you for using Log-Tech, Inc.
 (785) 625-3858

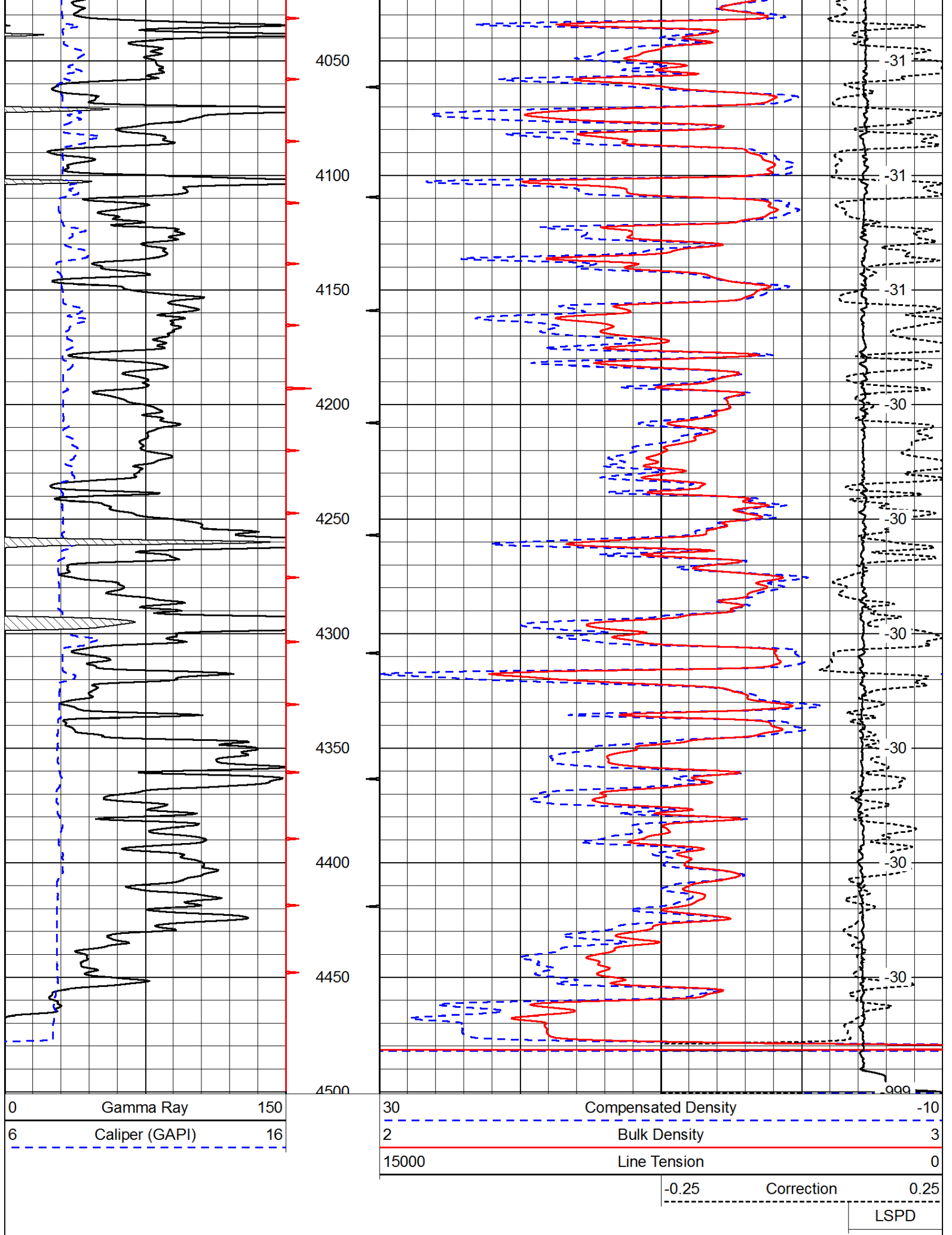
Rexford KS, North to the Y,
 1 West, 6 North (Around Curves),
 1 East, NorthEast Into.

Database File: c:\warrior\data\murfin_zola unit #1-1\murfin_zola_1-1hd.db
 Dataset Pathname: DIL\murfstk
 Presentation Format: cdl
 Dataset Creation: Thu May 03 13:46:59 2012
 Charted by: Depth in Feet scaled 1:600

0	Gamma Ray	150
6	Caliper (GAPI)	16

30	Compensated Density	-10
2	Bulk Density	3
15000	Line Tension	0
-0.25	Correction	0.25
LSPD		





Database File: c:\warrior\data\murfin_zola unit #1-1\murfin_zola_1-1hd.db
 Dataset Pathname: DIL/murfstk
 Presentation Format: cndlspec
 Dataset Creation: Thu May 03 13:46:59 2012
 Charted by: Depth in Feet scaled 1:240

0	Gamma Ray	150	30	Compensated Neutron (Limestone)	-10	
6	Caliper (GAPI)	16	30	Compensated Density (Limestone)	-10	
			15000	Line Tension	0	
				-0.25	Correction	0.25
			LSPD			

