



**SUPERIOR**  
Hays,  
Kansas

**DUAL RECEIVER  
CEMENT BOND  
LOG**

Company GRAND MESA OPERATING, CO.  
Well S & L #1-14  
Field MAURICE PROSPECT  
County GOVE  
State KANSAS

Company GRAND MESA OPERATING COMPANY  
Well S & L #1-14  
Field MAURICE PROSPECT  
County GOVE State KANSAS

Location: API #: 15-063-22003-0000  
330' FSL & 553' fei

SEC 14 TWP 13S RGE 31W

Permanent Datum GROUND LEVEL Elevation 2904  
Log Measured From KELLY BUSHING 5' A.G.L.  
Drilling Measured From KELLY BUSHING

Other Services  
Elevation  
K.B. 2909  
D.F. 2911  
G.L. 2904

Date	7-12-12						
Run Number	ONE						
Depth Driller	4700						
Depth Logger	4672						
Bottom Logged Interval	4670						
Top Log Interval	3400						
Open Hole Size	7-7/8"						
Type Fluid	WATER						
Density / Viscosity							
Max. Recorded Temp.							
Estimated Cement Top							
Time Well Ready							
Time Logger on Bottom							
Equipment Number	0916						
Location	HAYS, KANSAS						
Recorded By	THOMASON						
Witnessed By	JOHN JOHNSON						
Borehole Record							
Run Number	Bit	From	To	Size	Weight	From	To
Casing Record							
Surface String		Size		Wgt/Ft		Top	Bottom
Prot. String							
Production String		5-1/2"					
Liner							

<<< Fold Here >>>

All interpretations are opinions based on inferences from electrical or other measurements and we cannot and do not guarantee the accuracy or correctness of any interpretation, and we shall not, except in the case of gross or willful negligence on our part, be liable or responsible for any loss, costs, damages, or expenses incurred or sustained by anyone resulting from any interpretation made by any of our officers, agents or employees. These interpretations are also subject to our general terms and conditions set out in our current Price Schedule.

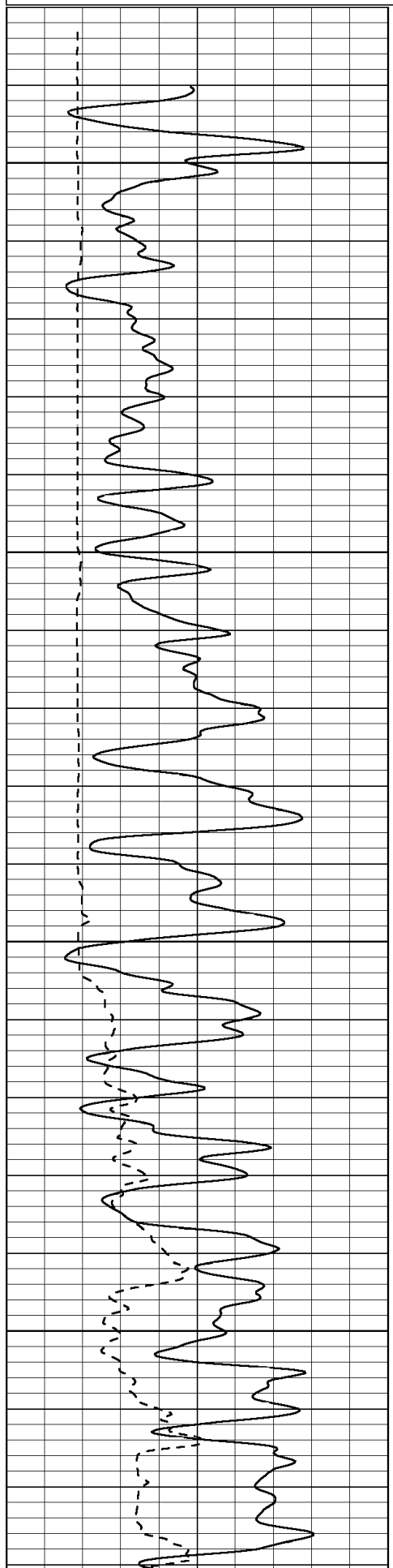
Comments

THANK YOU FOR USING SUPERIOR WELL SERVICES  
DIRECTIONS  
OAKLEY KS. SOUTH TO GOVE RD. 5 EAST - 3 SOUTH - 1 3/4 EAST - NORTH INTO

0	Gamma Ray (GAPI)	150
200	5' Travel Time (usec)	1000

0	3' Amplitude (mV)	100
9	CCL	-1
0	Amplified Amplitude (mV)	20

200	5FT VDL	1000
-----	---------	------

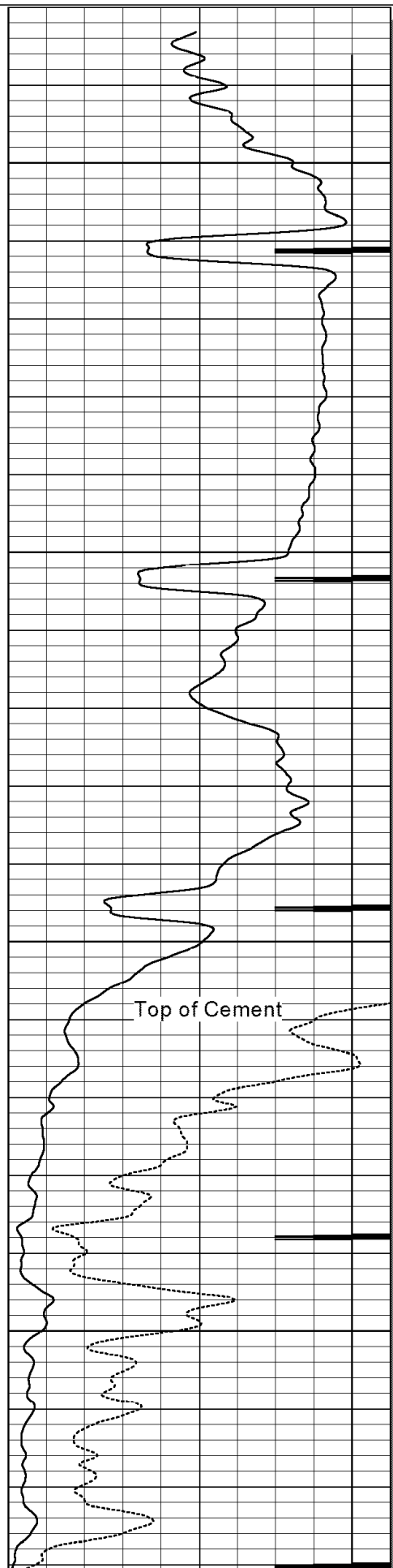


3400

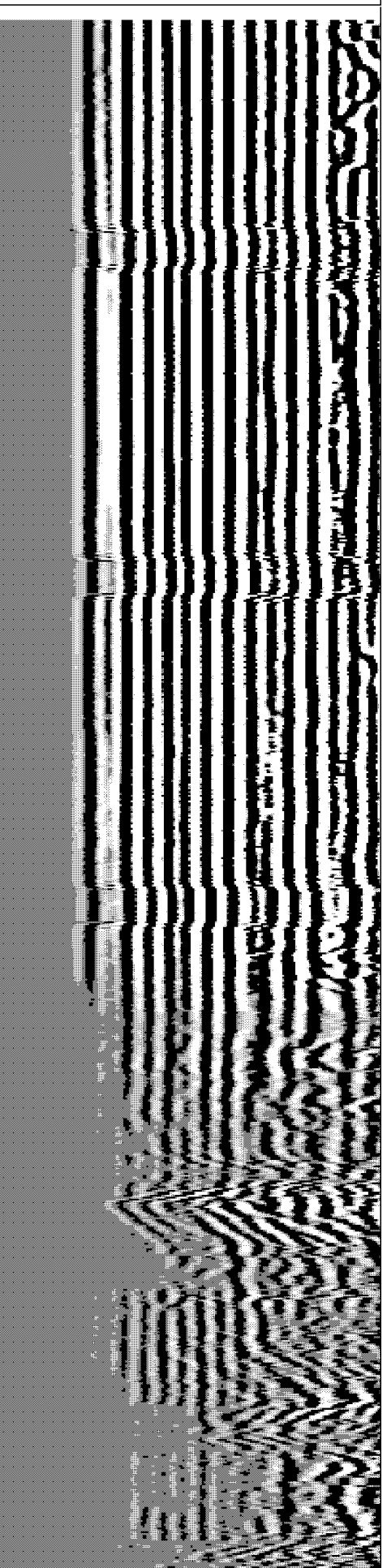
3450

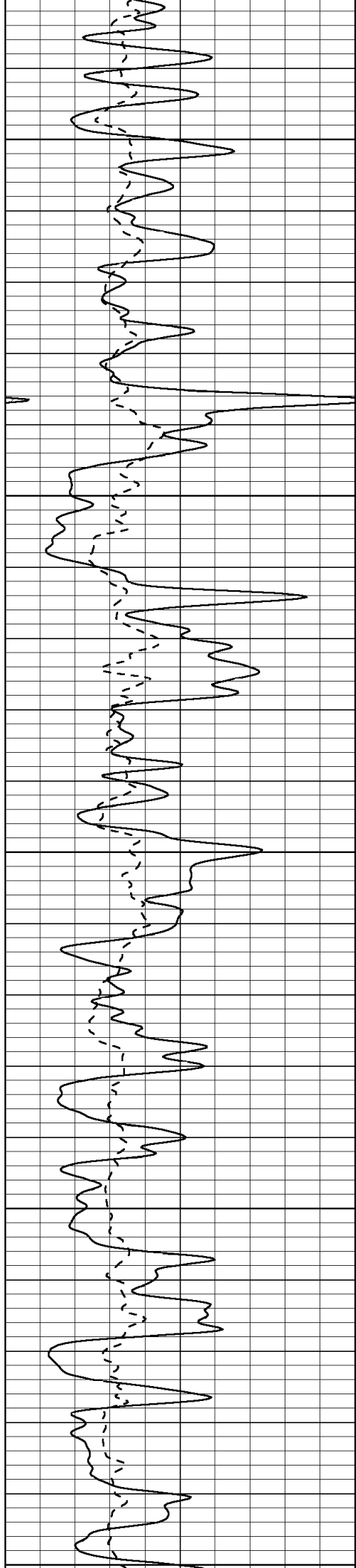
3500

3550

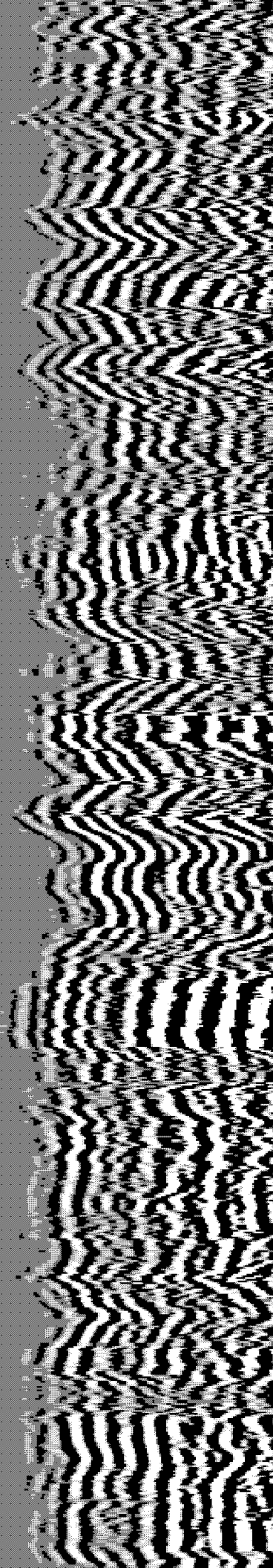
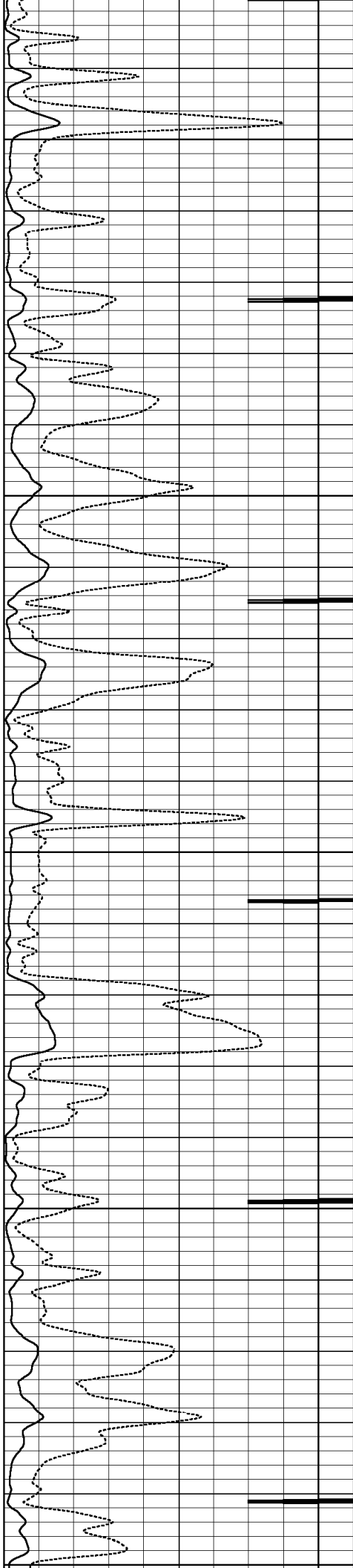


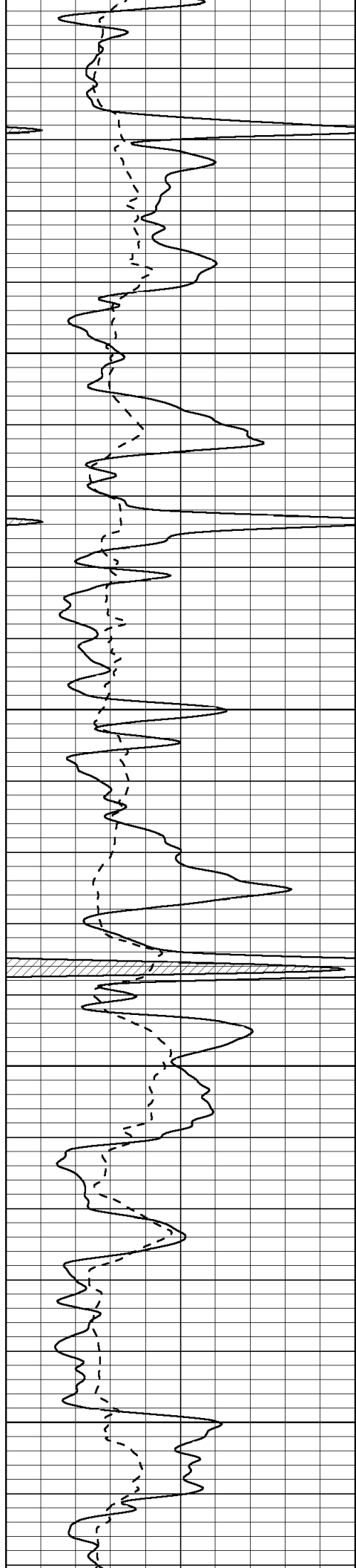
Top of Cement





3600  
3650  
3700  
3750  
3800





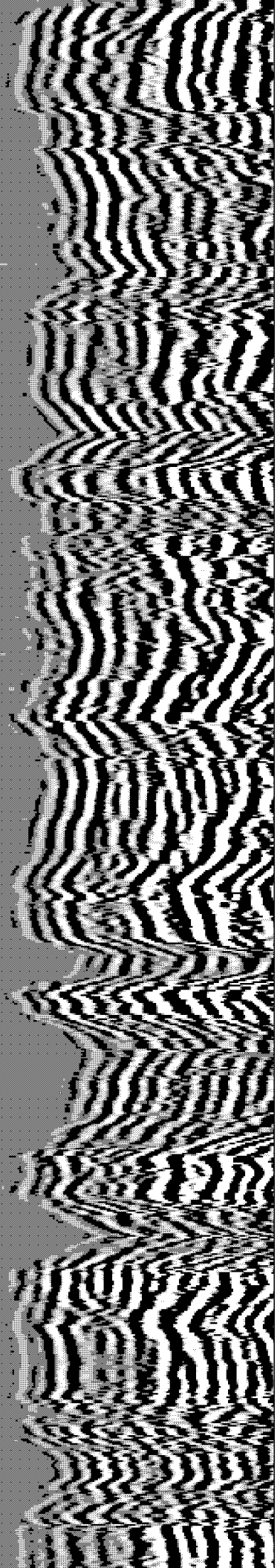
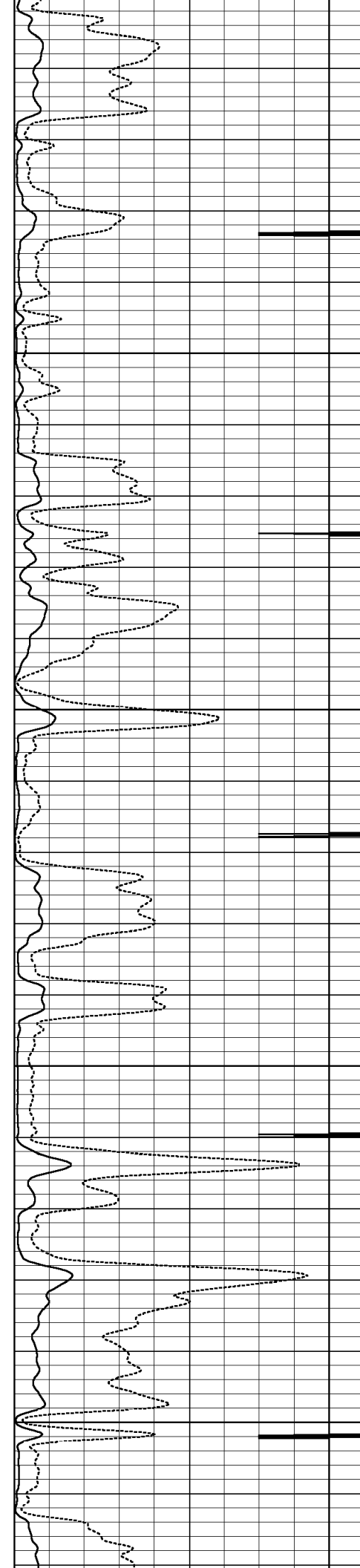
3880

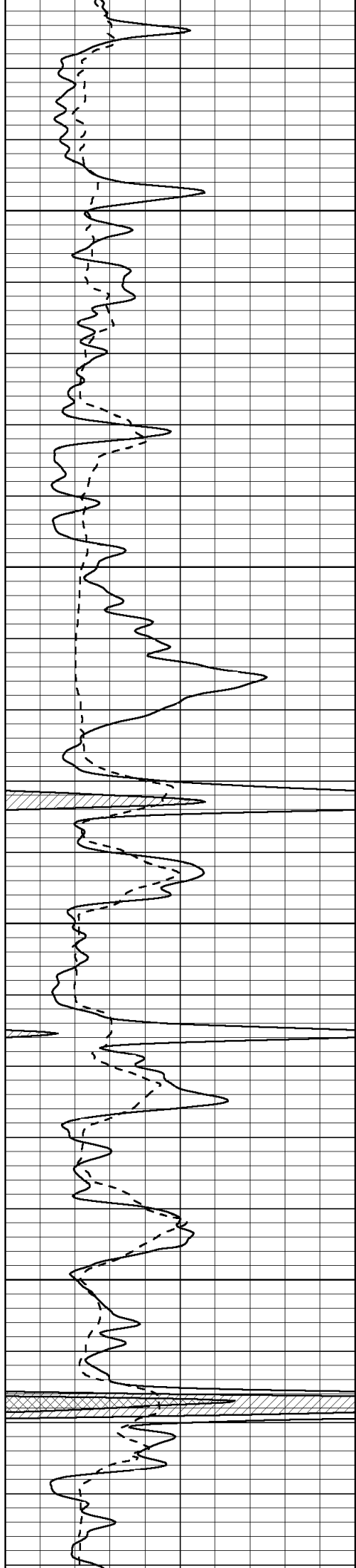
3850

3900

3950

4000



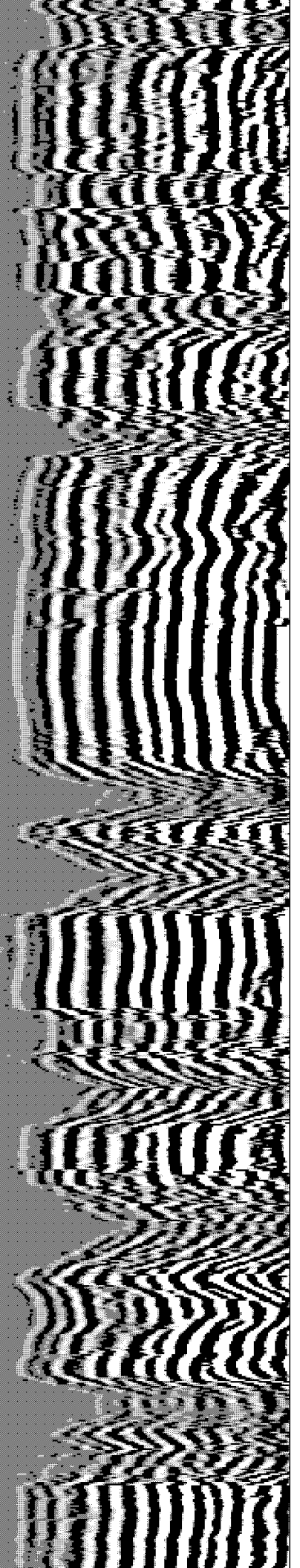
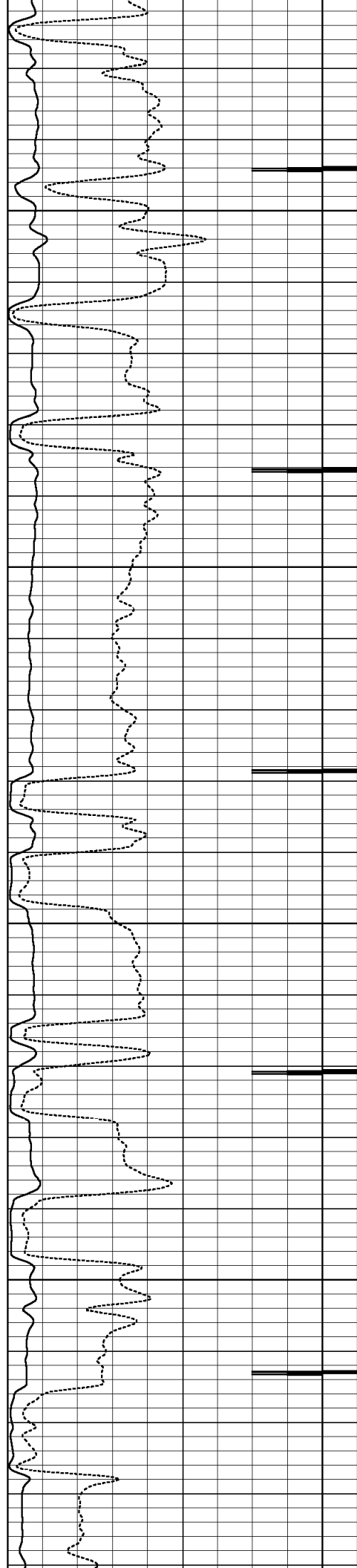


4050

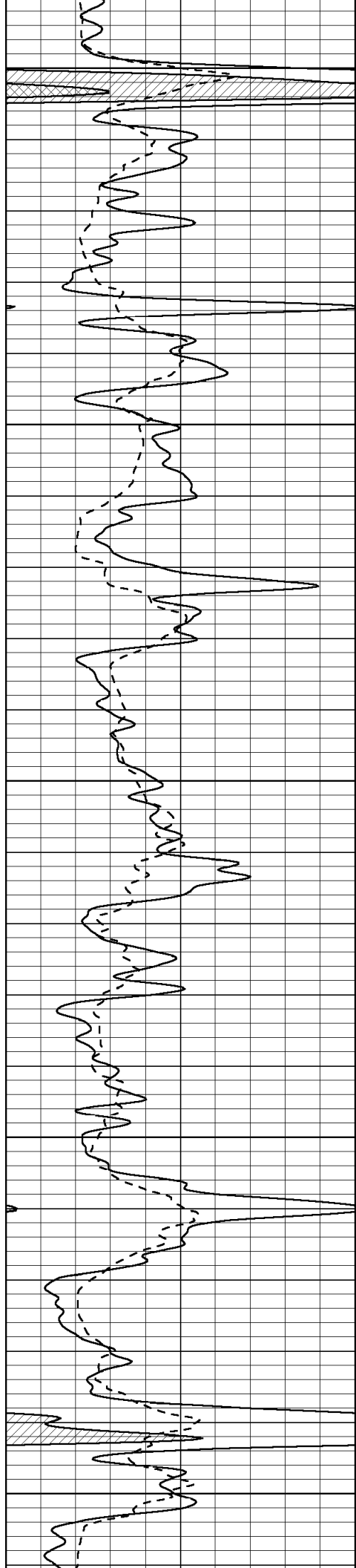
4100

4150

4200







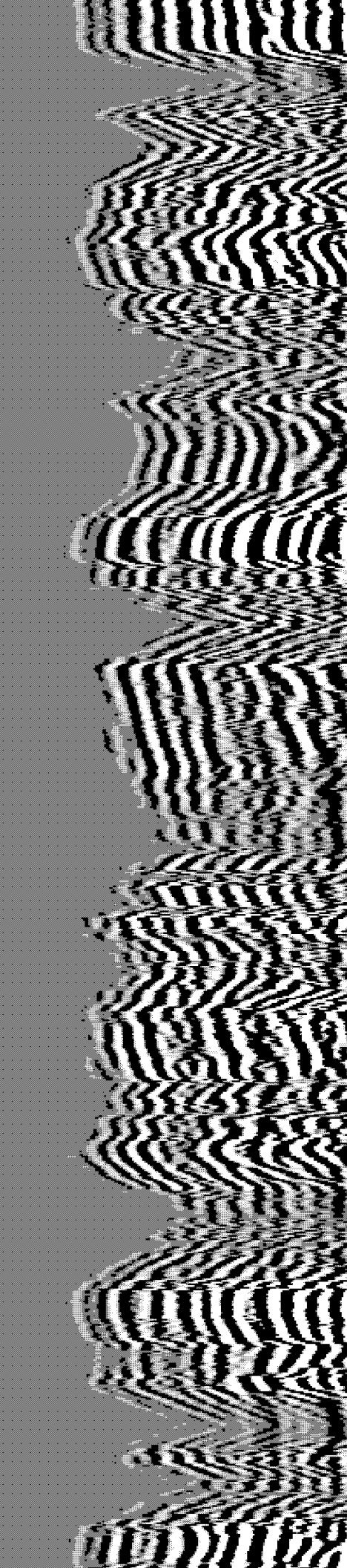
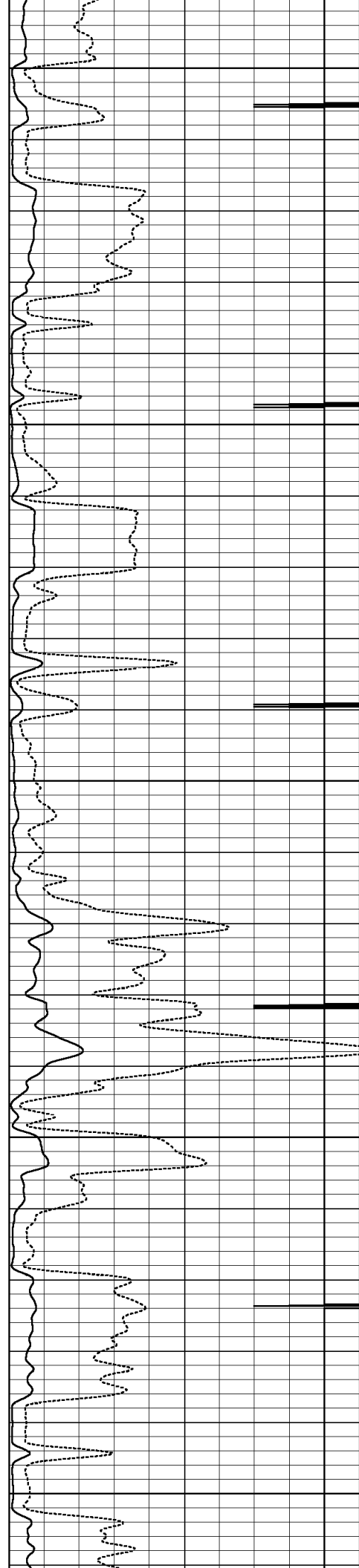
4250

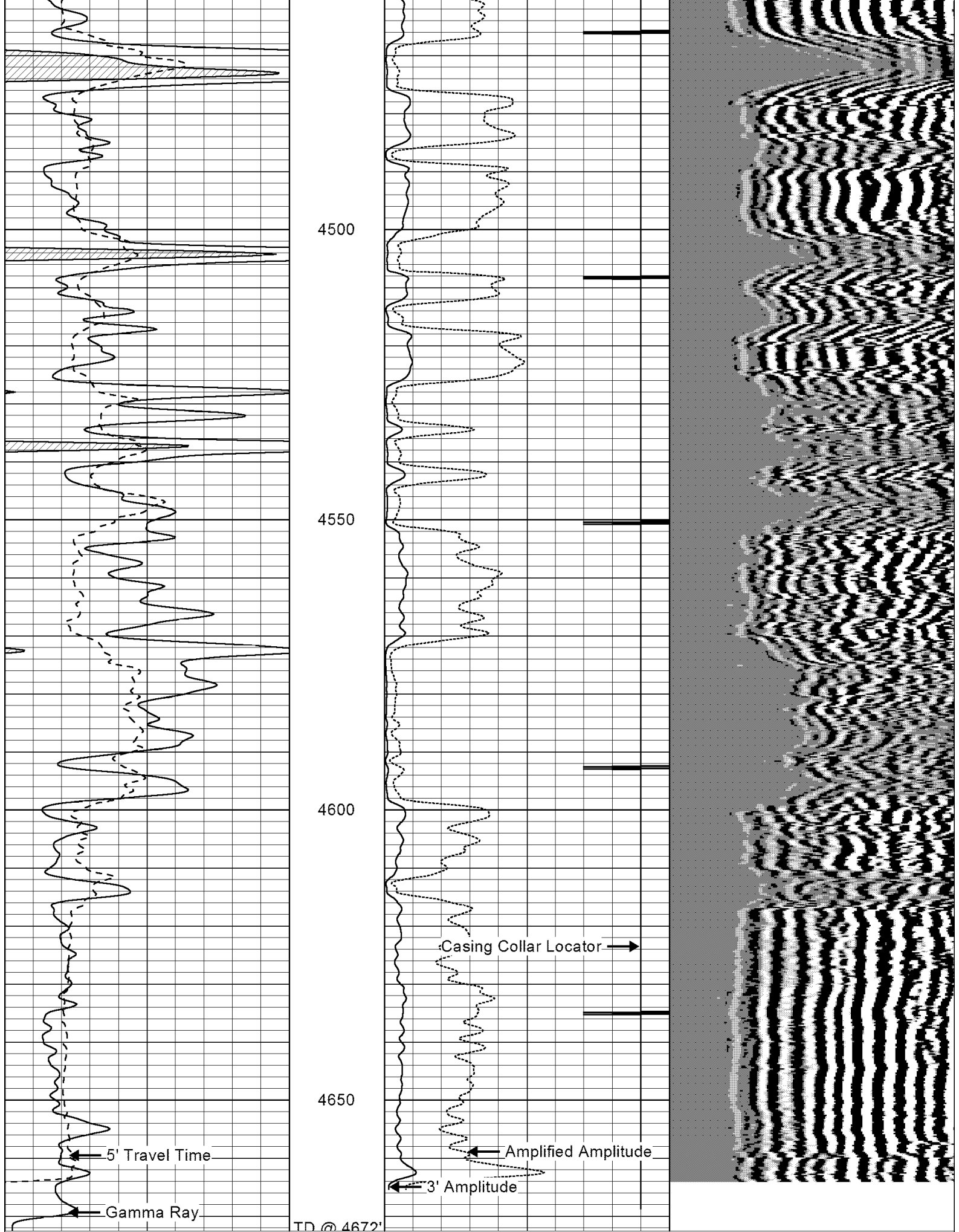
4300

4350

4400

4450





4500

4550

4600

4650

TD @ 4672'

Casing Collar Locator →

← Amplified Amplitude

← 3' Amplitude

0 Gamma Ray (GAPI) 150

200 5' Travel Time (usec) 1000

0 3' Amplitude (mV) 100

9 CCI -1

200 5FT VDL 1000

Amplified Amplitude (mV)

0 Amplified Amplitude (mV) 20