

**SUPERIOR
Hays,
Kansas**

**DUAL
INDUCTION
LOG**

Company RITCHIE EXPLORATION, INC.
Well SIMONS 14 CD #1
Field WILDCAT
County WICHITA State KANSAS

Location: API #: 15-203-20177

350' FSL & 2030' FEL

SEC 14 TWP 17S RGE 35W

Other Services
CDL/CNL

Permanent Datum GROUND LEVEL Elevation 3167
Log Measured From KELLY BUSHING 10' A.G.L.
Drilling Measured From KELLY BUSHING

Elevation
K.B. 3177
D.F.
G.L. 3167

Date	5-8-12		
Run Number	ONE		
Depth Driller	5000		
Depth Logger	4999		
Bottom Logged Interval	4997		
Top Log Interval	00		
Casing Driller	255		
Casing Logger	254		
Bit Size	7.875		
Type Fluid in Hole	CHEMICAL MUD		
Density / Viscosity	9.3 / 50		
pH / Fluid Loss	9.5 / 9.6		
Source of Sample	FLOWLINE		
Rm @ Meas. Temp	0.60 @ 89F		
Rmf @ Meas. Temp	0.45 @ 89F		
Rmc @ Meas. Temp	0.72 @ 89F		
Source of Rmf / Rmc	MEASURED		
Rm @ BHT	.430 @ 125F		
Time Circulation Stopped	3 HOURS		
Time Logger on Bottom	12:15 A.M.		
Maximum Recorded Temperature	125F		
Equipment Number	860		
Location	HAYS, KS.		
Recorded By	RUPP		
Witnessed By	MAX LOVELLY		

<<< Fold Here >>>

All interpretations are opinions based on inferences from electrical or other measurements and we cannot and do not guarantee the accuracy or correctness of any interpretation, and we shall not, except in the case of gross or willful negligence on our part, be liable or responsible for any loss, costs, damages, or expenses incurred or sustained by anyone resulting from any interpretation made by any of our officers, agents or employees. These interpretations are also subject to our general terms and conditions set out in our current Price Schedule.

Comments

SUPERIOR WELL SERVICES
785-628-6395
THANK YOU FOR YOUR BUSINESS
DIRECTIONS: SCOTT CITY, 12W TO WICHITA C.L., 6N, 1W, S INTO.



SUPERIOR
Hays,
Kansas

MAIN SECTION

Database File: 009113ddn.db
 Dataset Pathname: pass3.2A
 Presentation Format: dil2
 Dataset Creation: Tue May 08 03:31:28 2012
 Charted by: Depth in Feet scaled 1:600

0 Gamma Ray (GAPI) 150

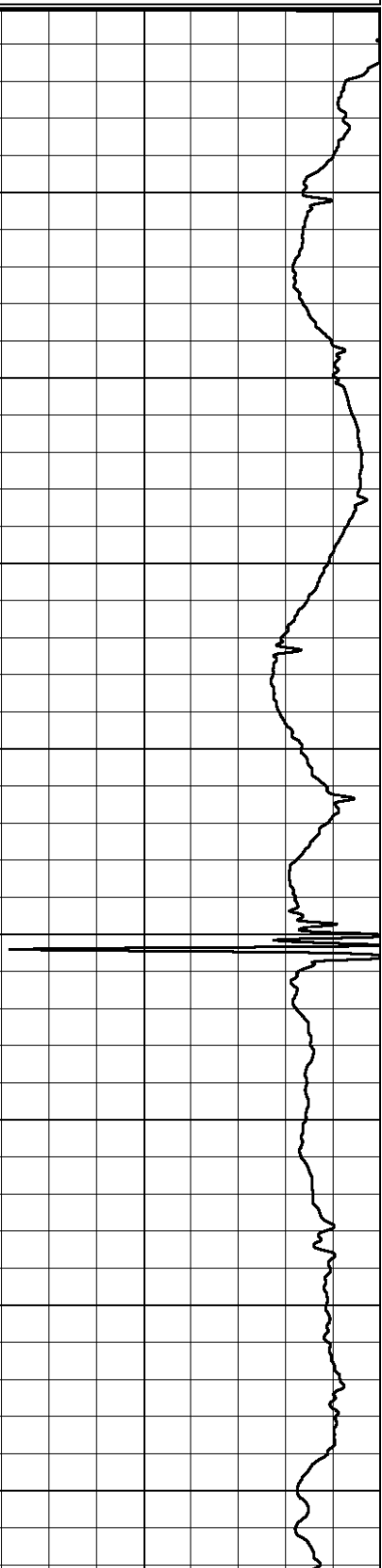
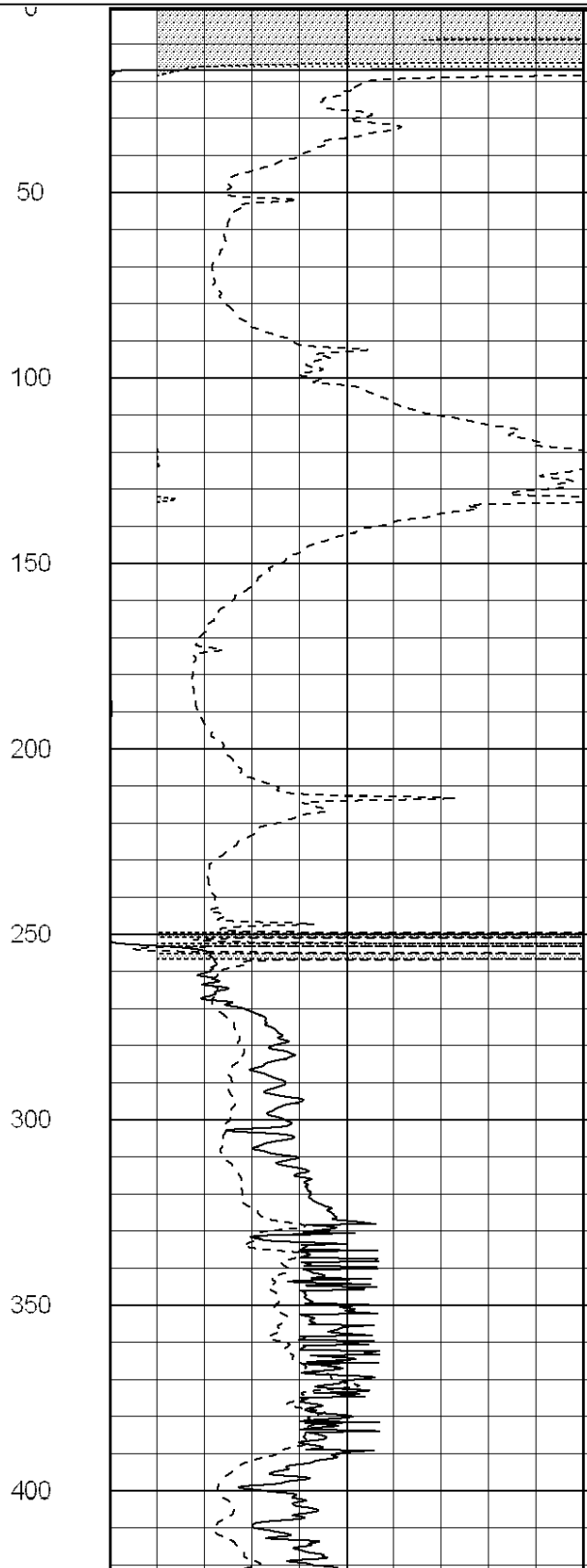
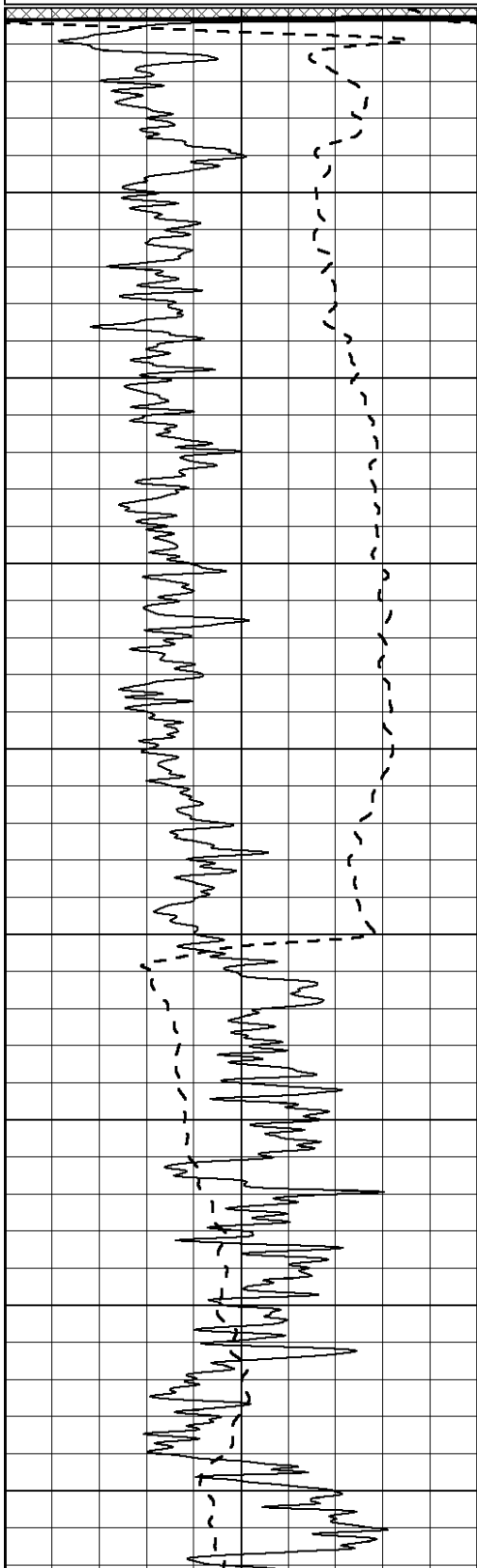
0 RLL3 (Ohm-m) 50

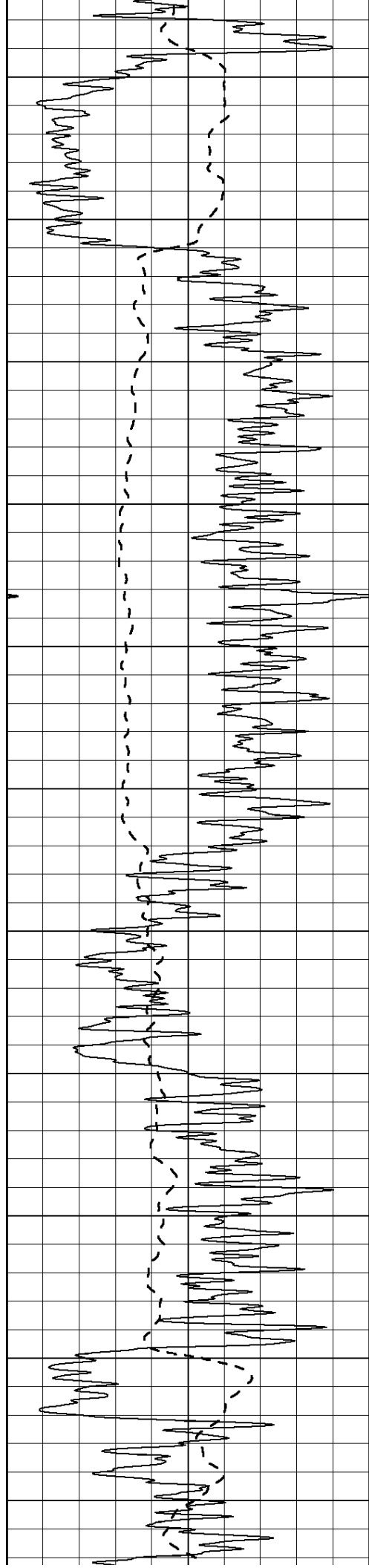
0 Deep Induction (Ohm-m) 50

1000 CILD (mmho/m) 0

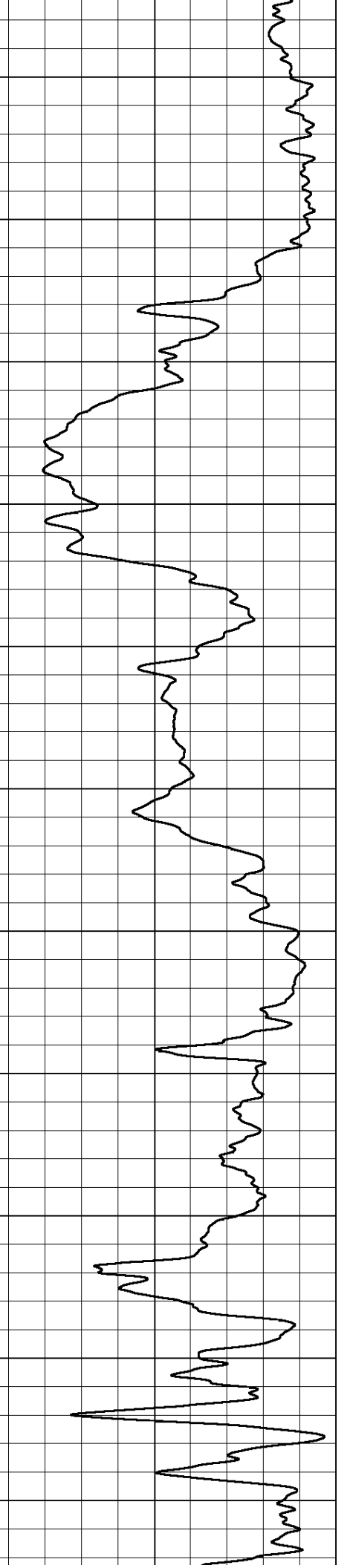
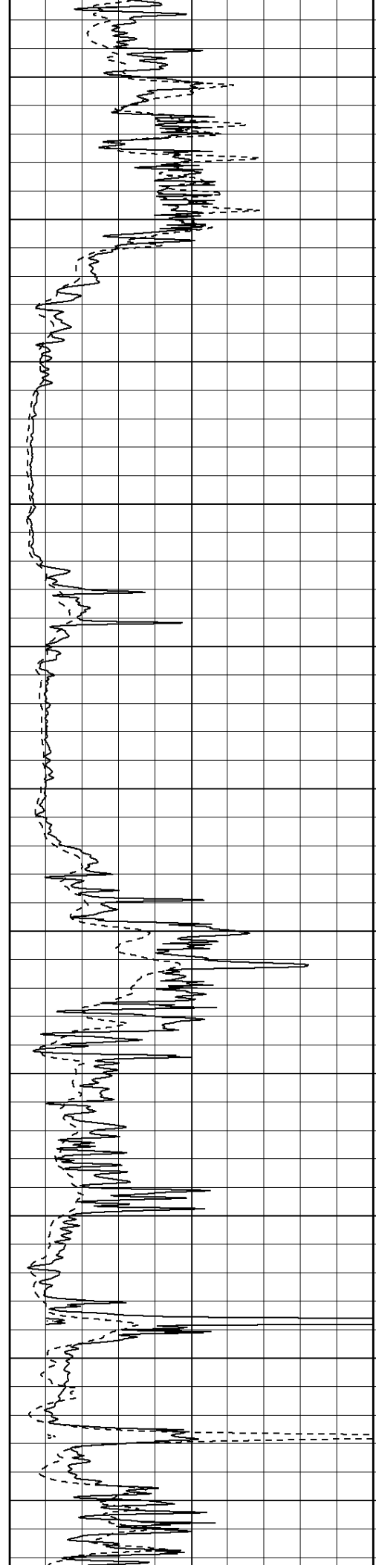
50 RILD X10 (Ohm-m) 500

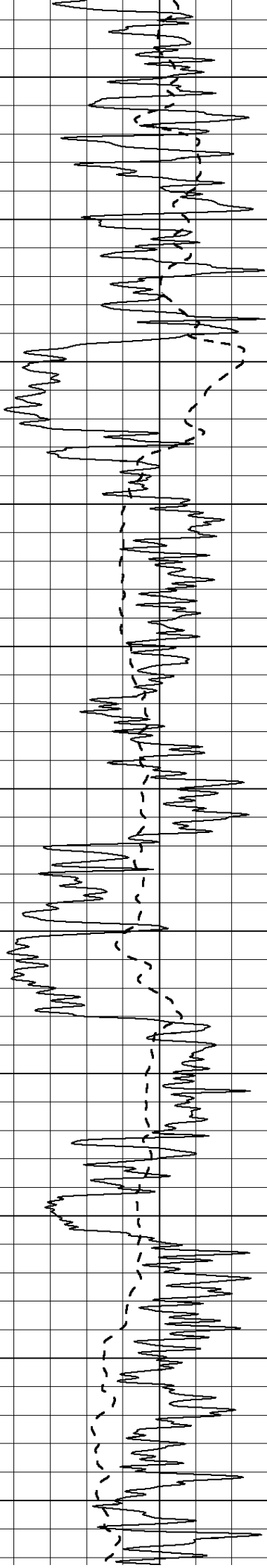
50 RLL3 X10 (Ohm-m) 500





450
500
550
600
650
700
750
800
850
900
950





1000

1050

1100

1150

1200

1250

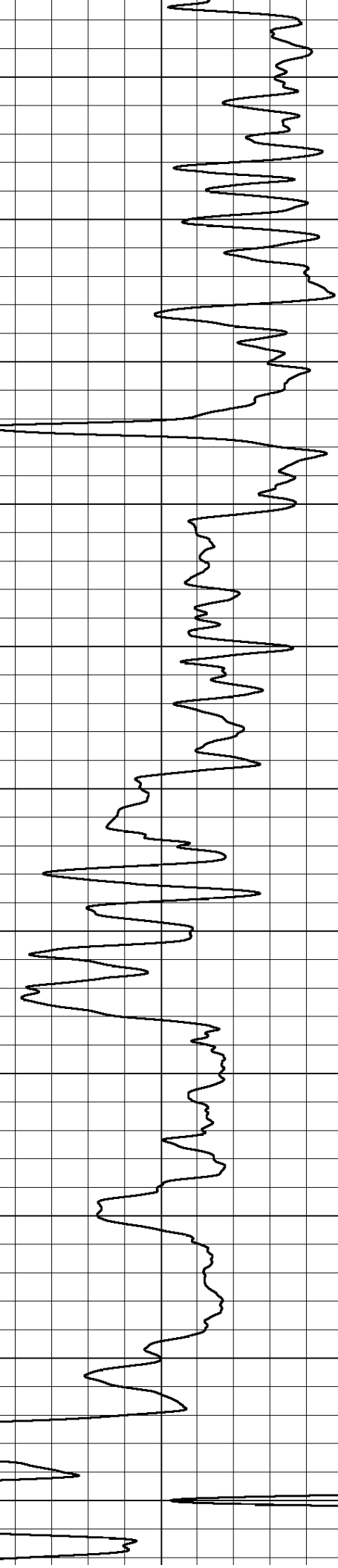
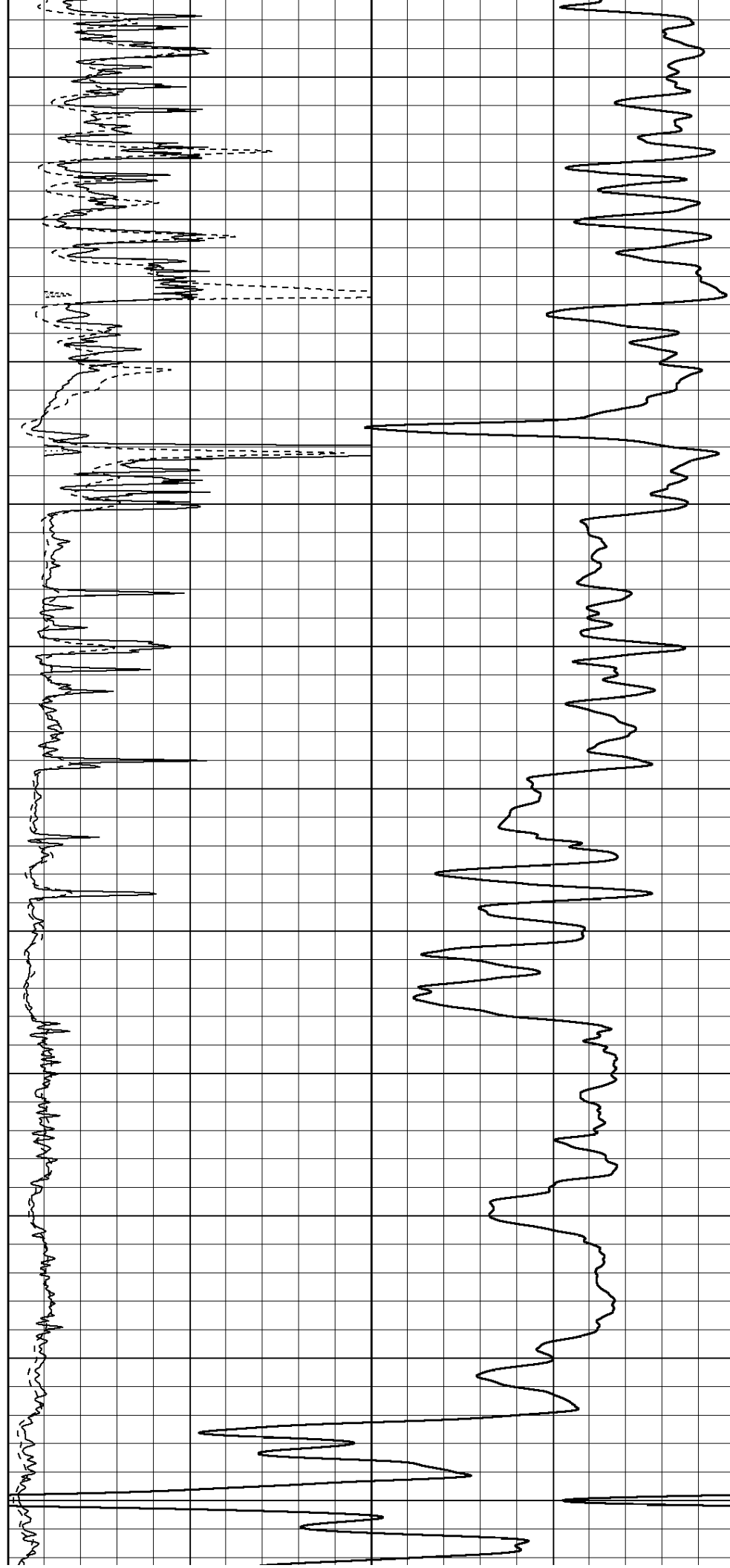
1300

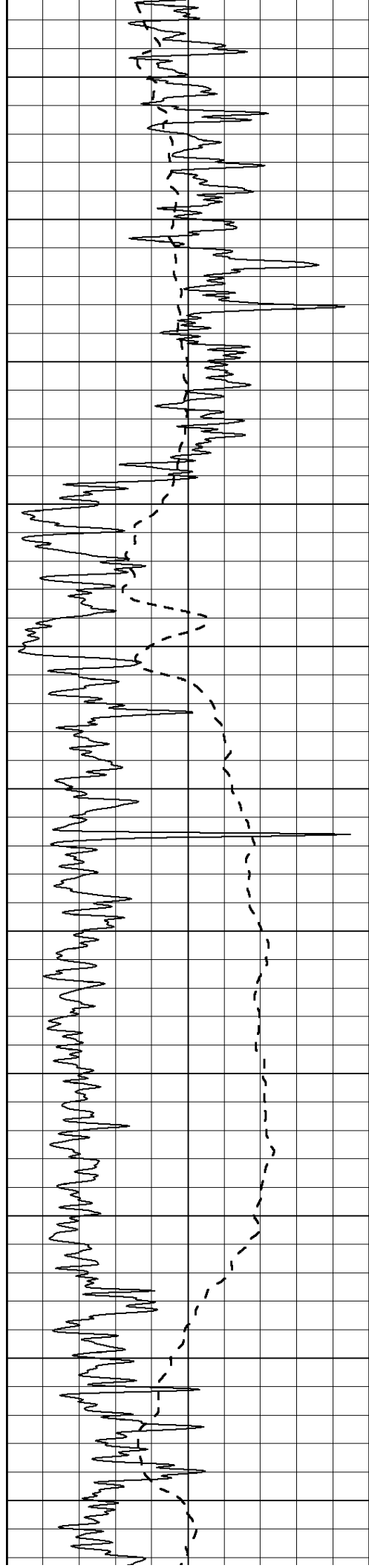
1350

1400

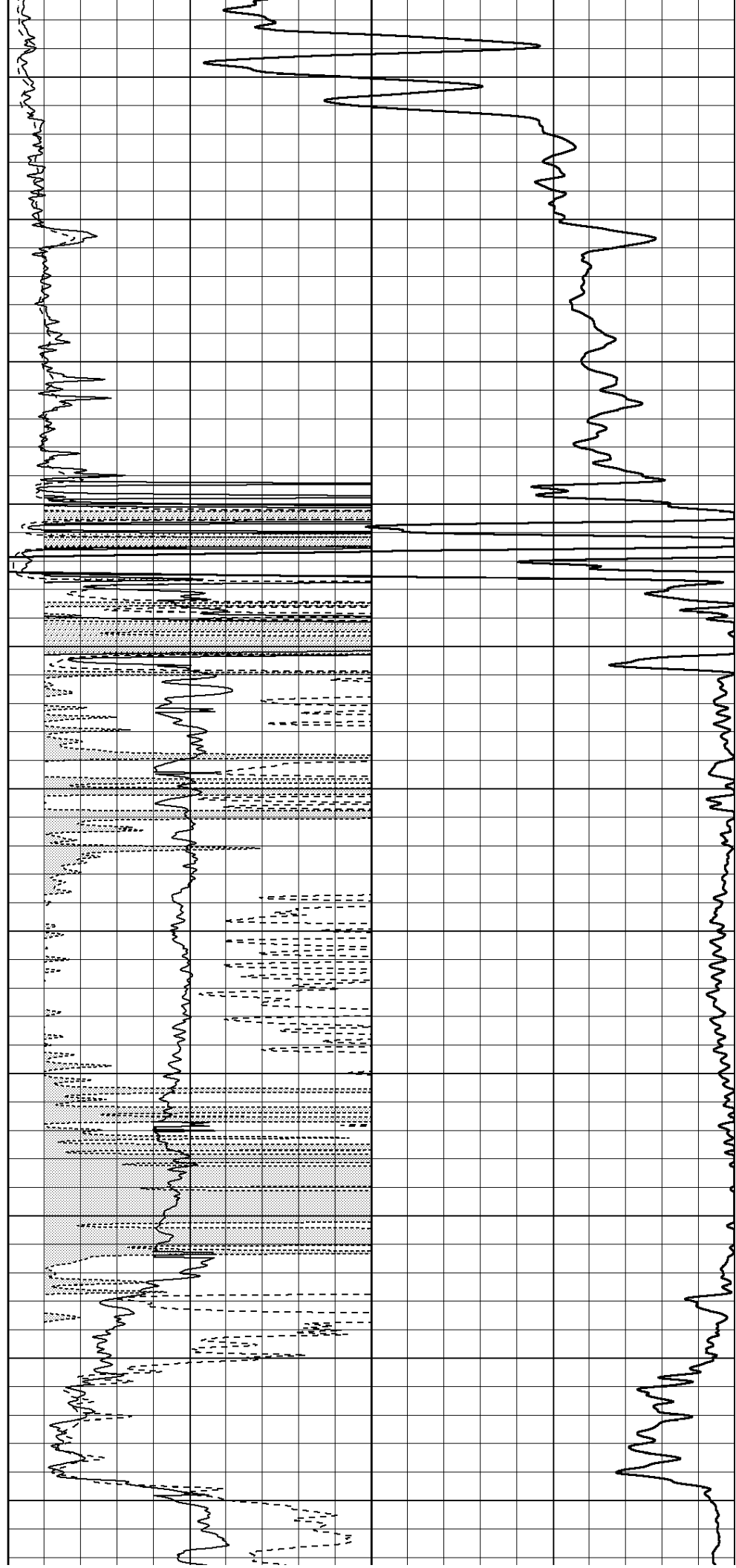
1450

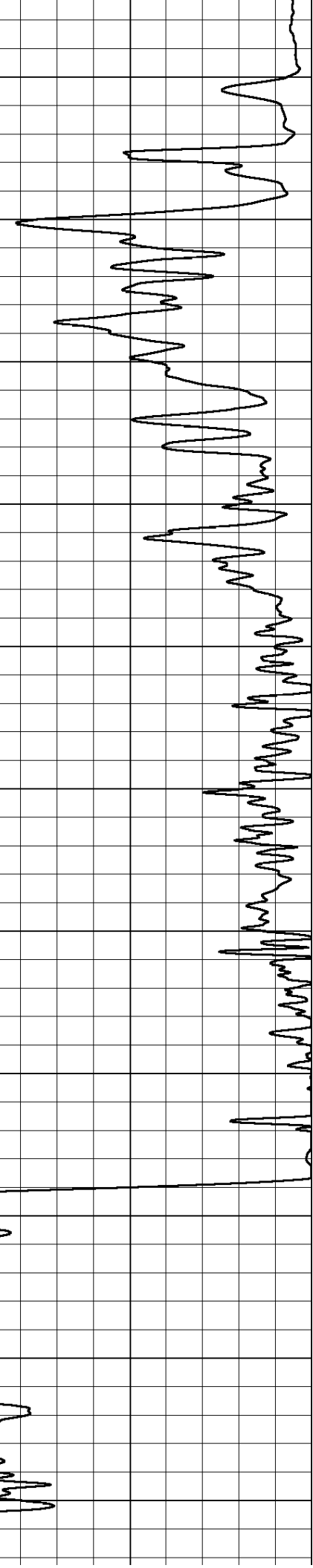
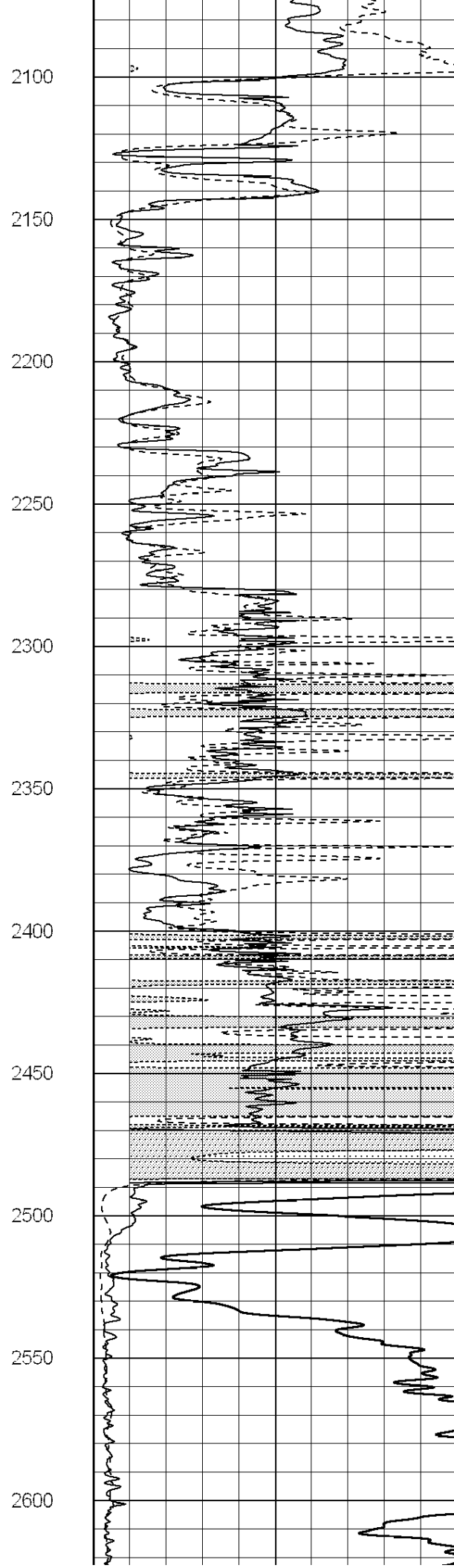
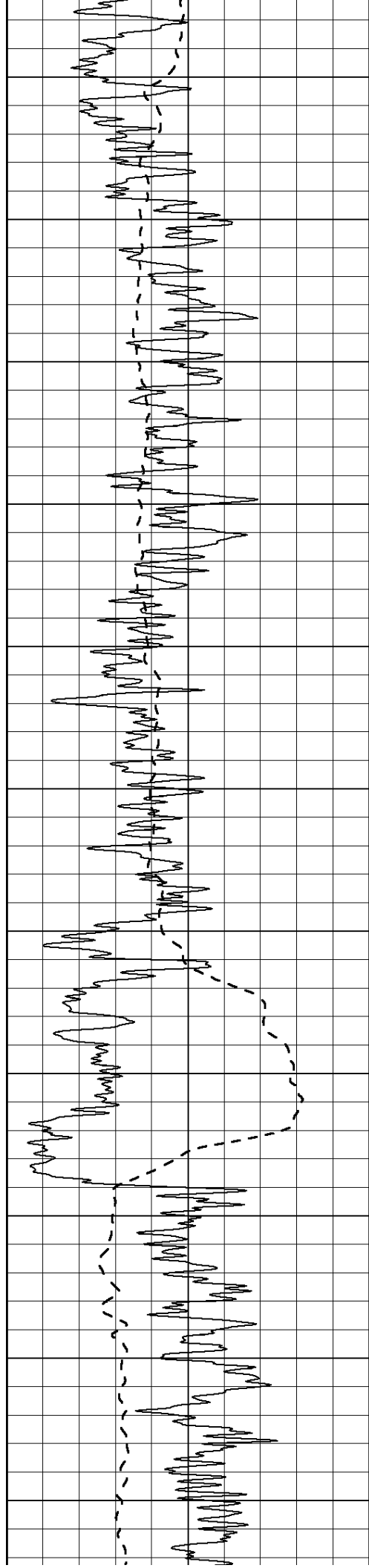
1500

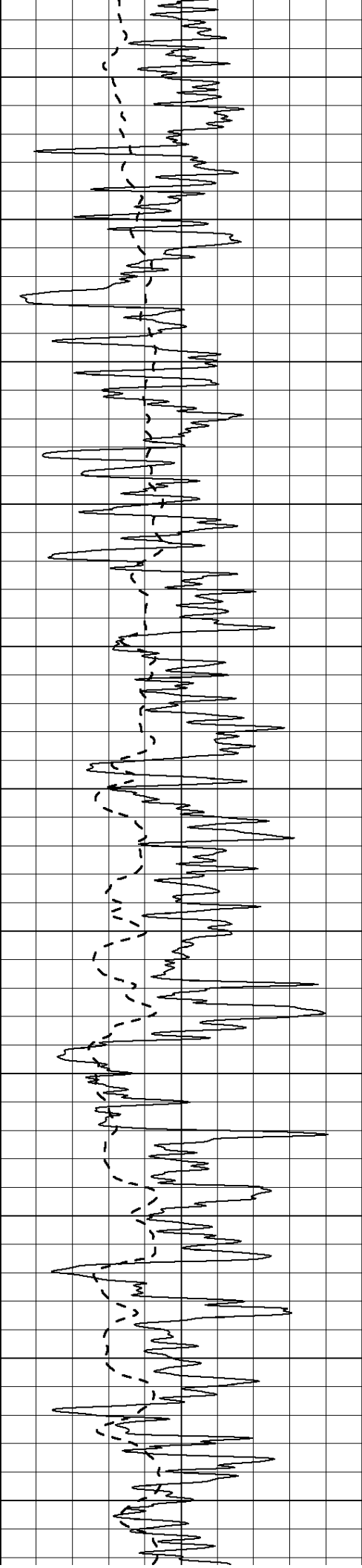




1550
1600
1650
1700
1750
1800
1850
1900
1950
2000
2050







2650

2700

2750

2800

2850

2900

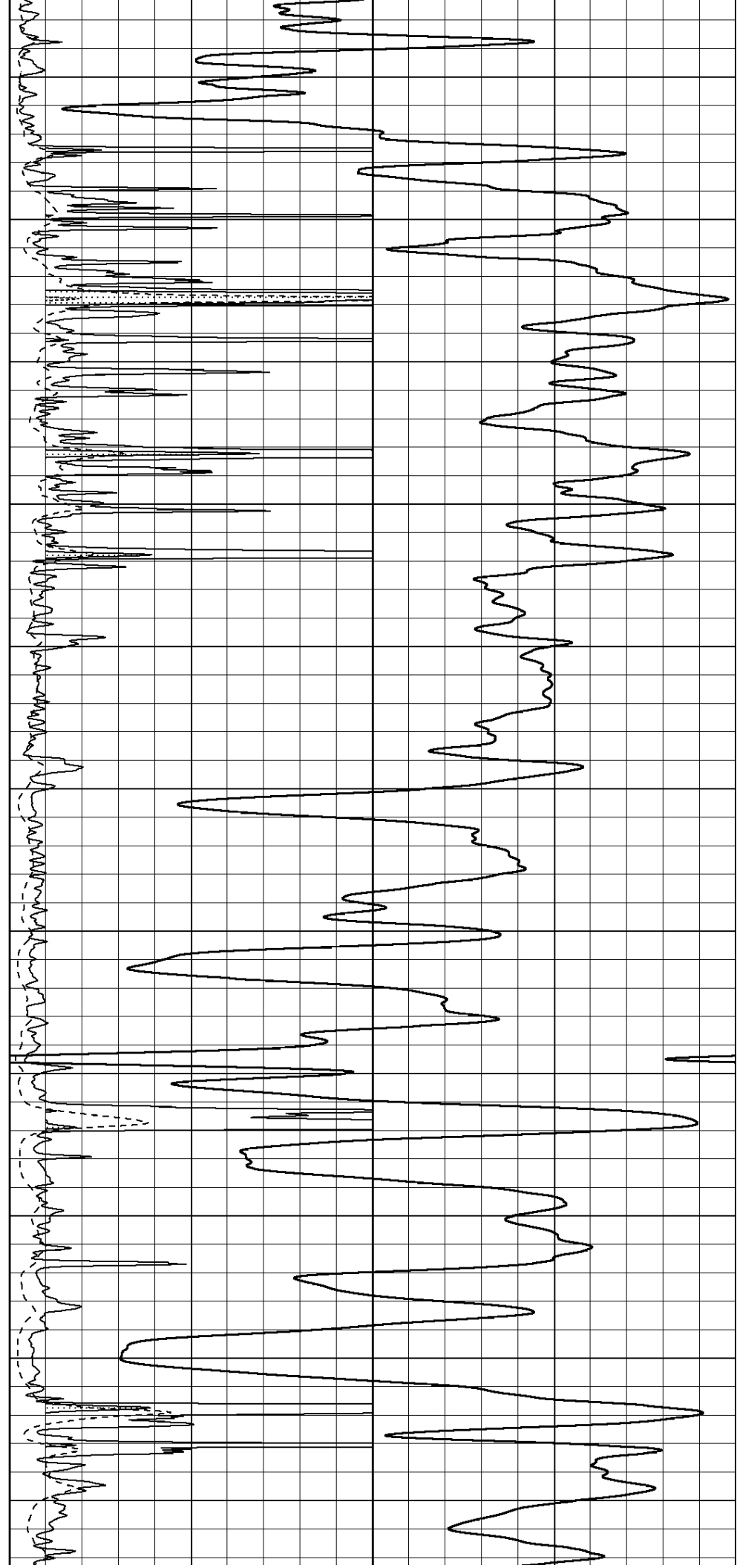
2950

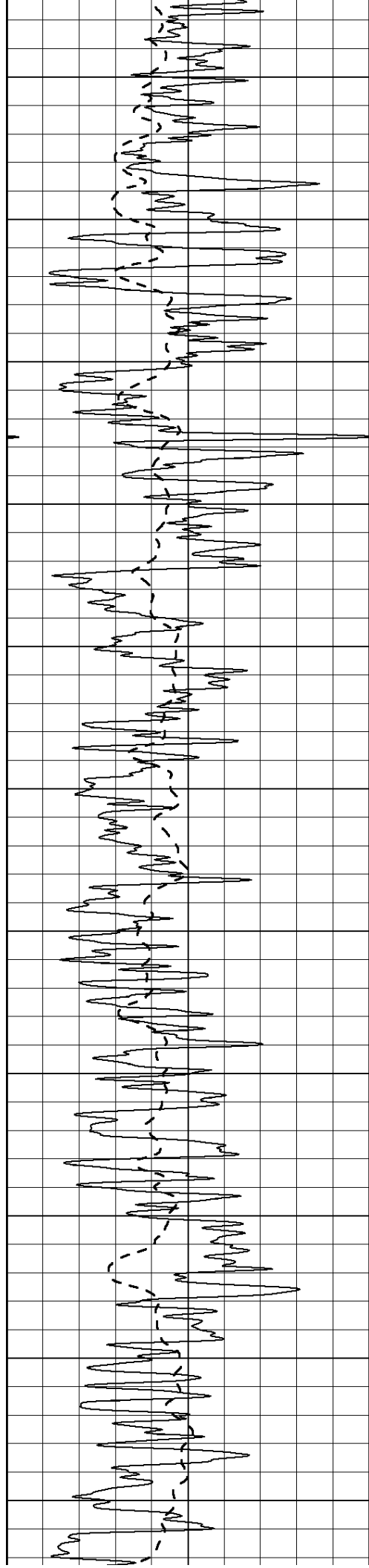
3000

3050

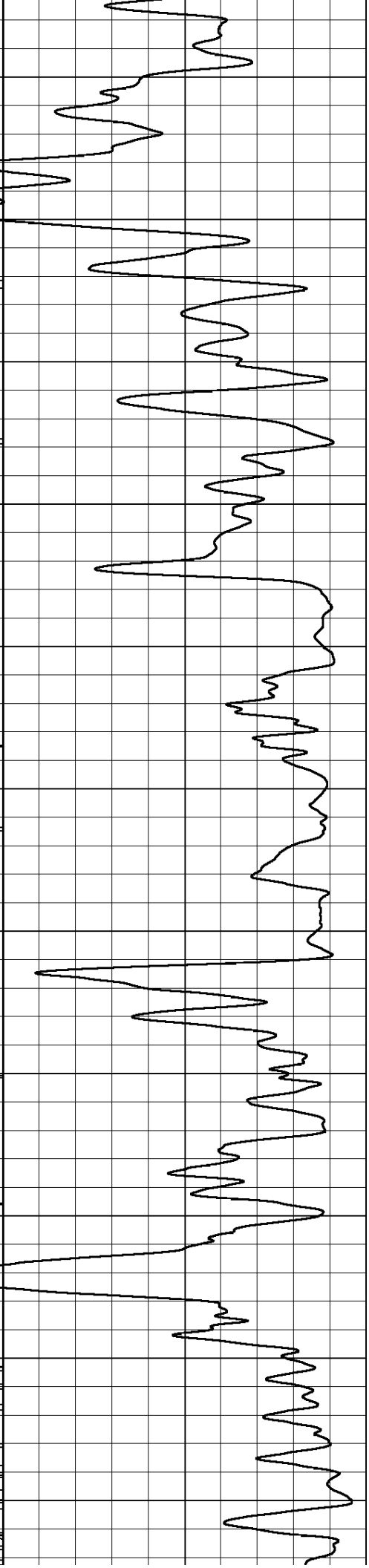
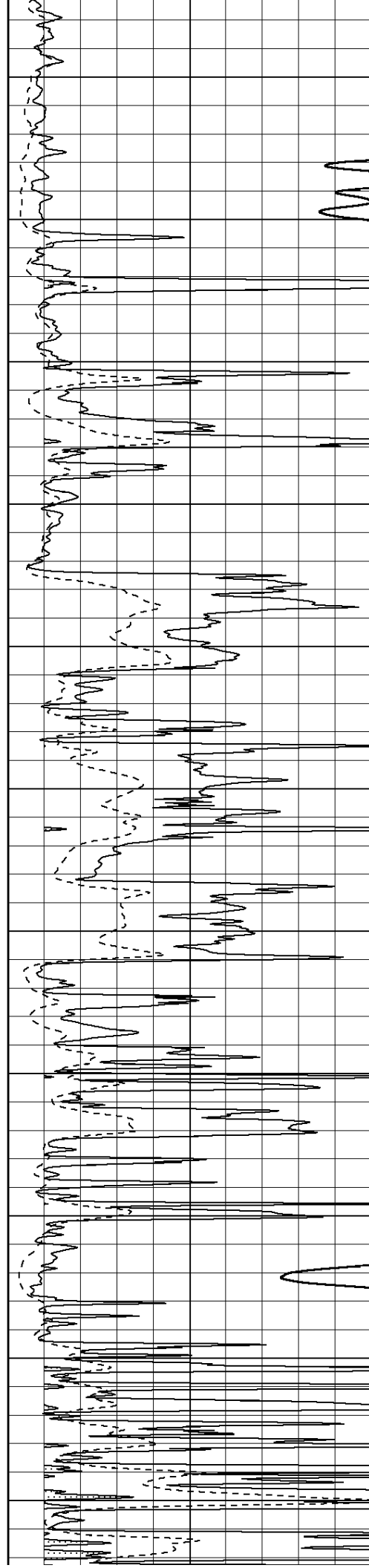
3100

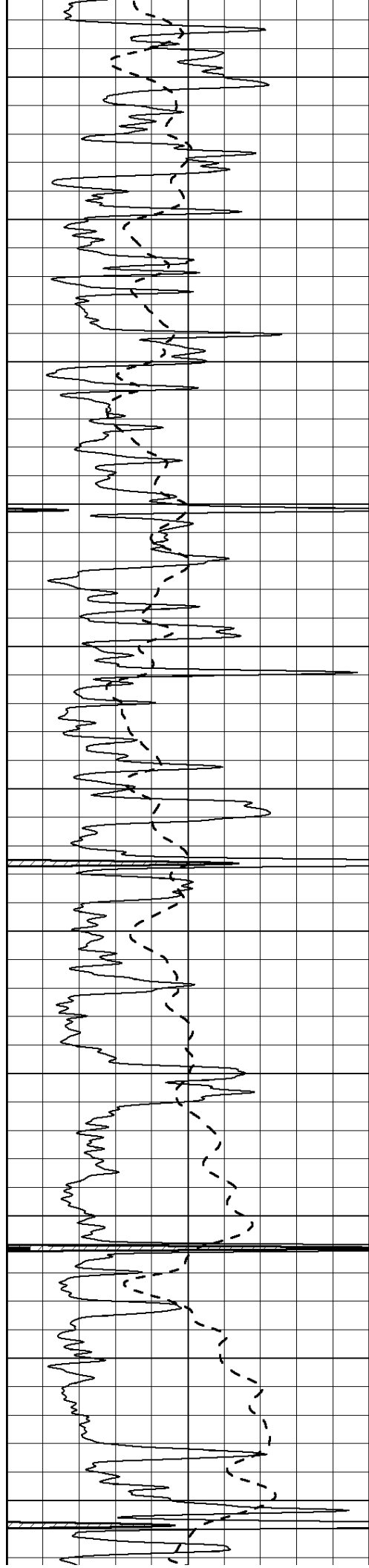
3150





3200
3250
3300
3350
3400
3450
3500
3550
3600
3650
3700





3750

3800

3850

3900

3950

4000

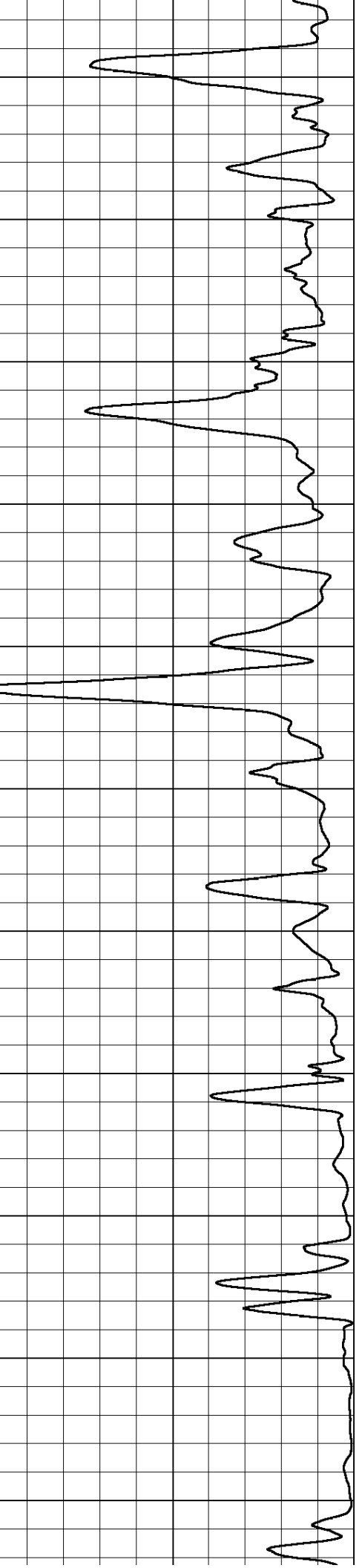
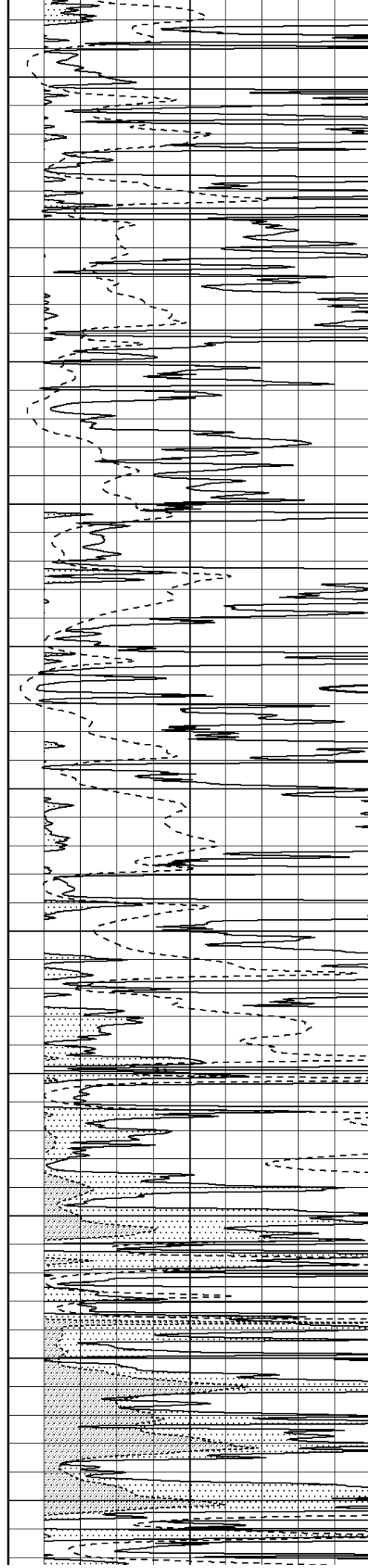
4050

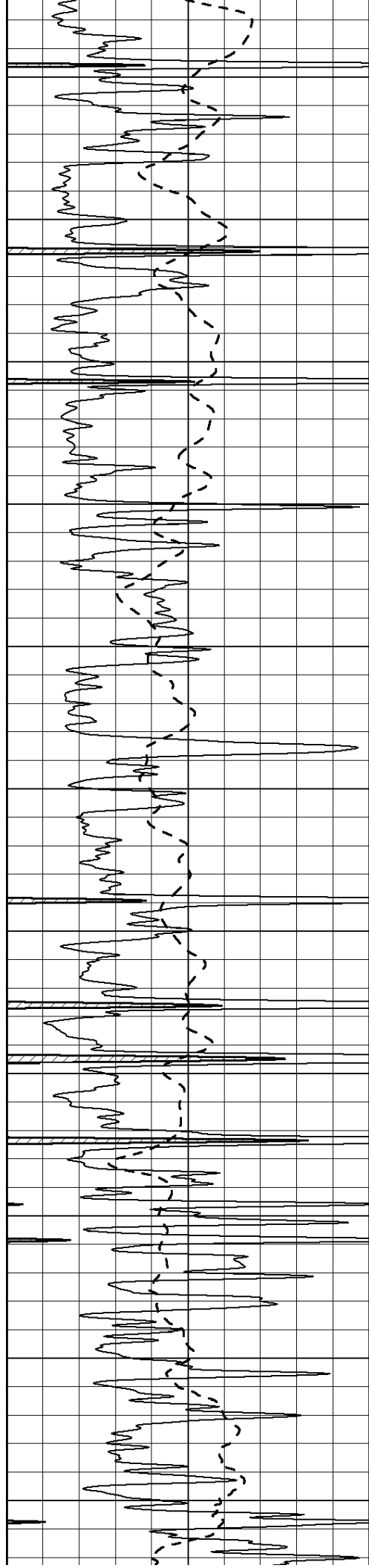
4100

4150

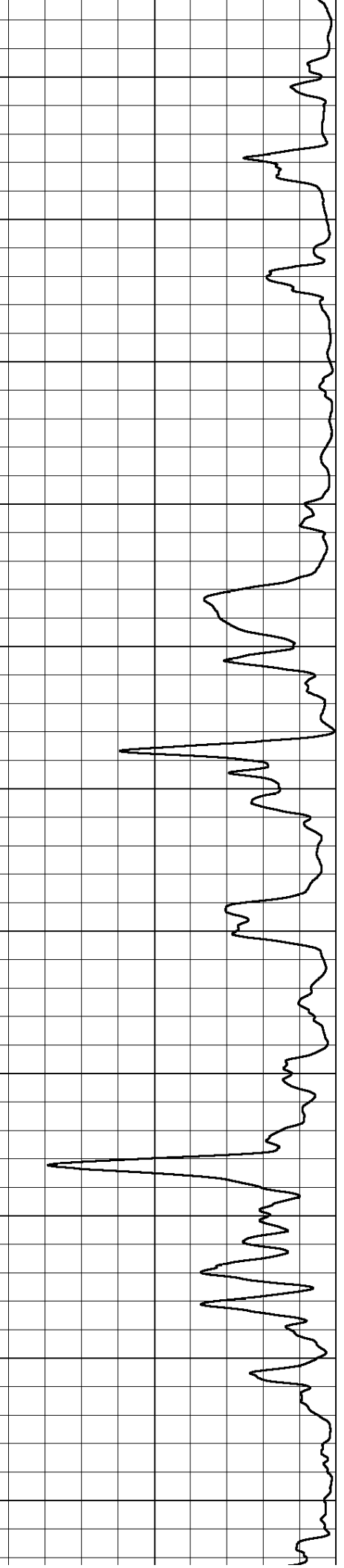
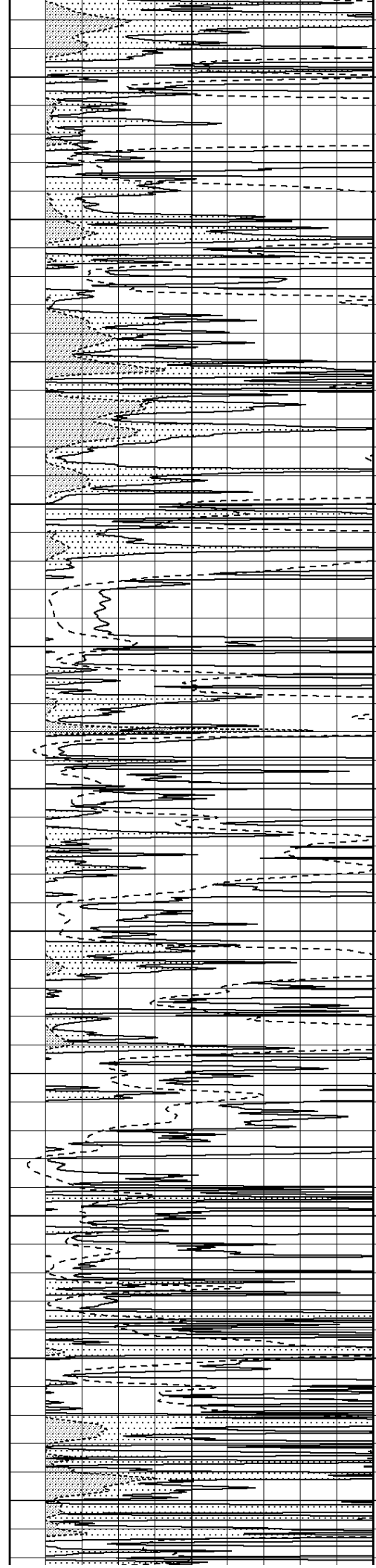
4200

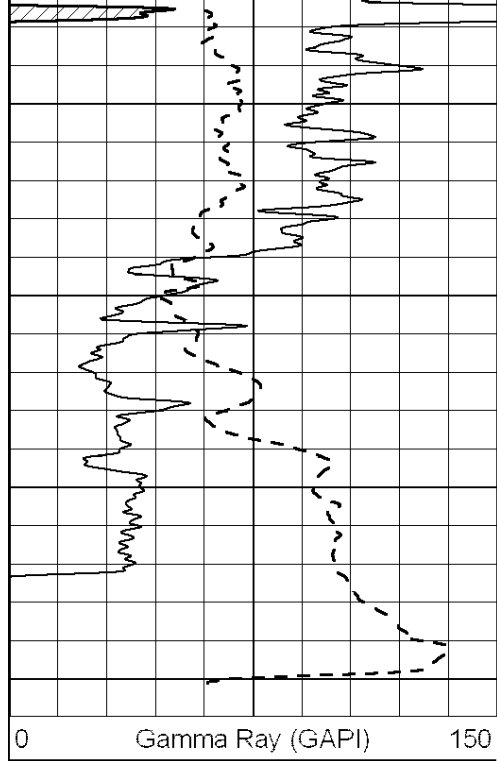
4250



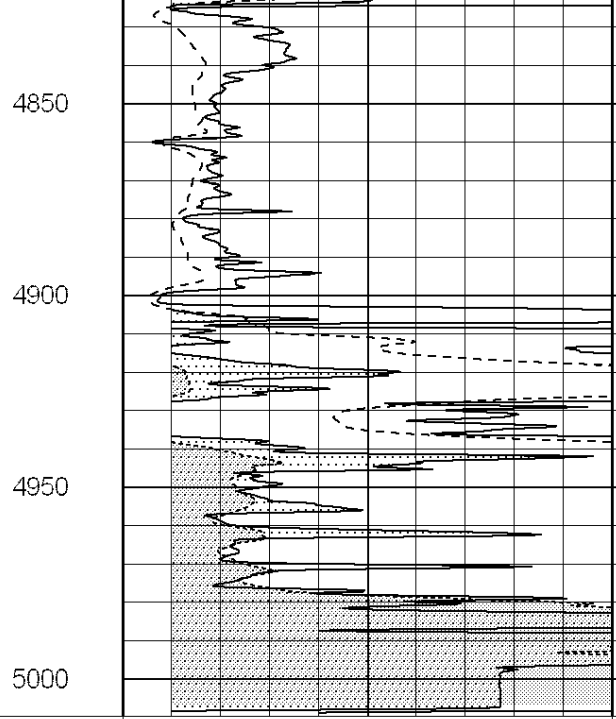


4300
4350
4400
4450
4500
4550
4600
4650
4700
4750
4800





0 Gamma Ray (GAPI) 150



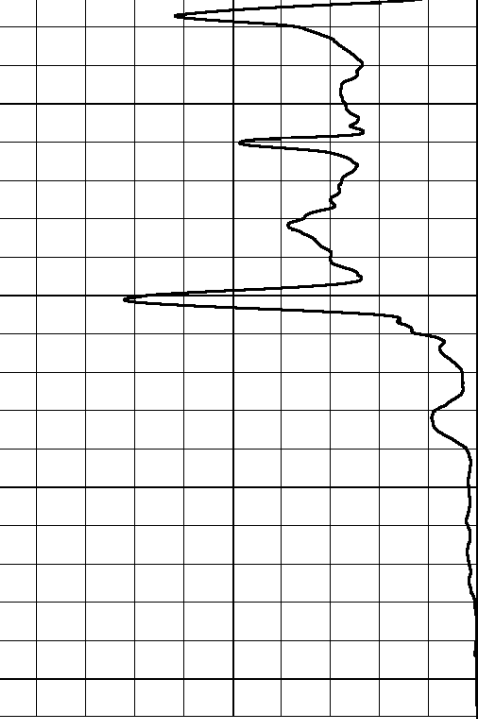
0 RLL3 (Ohm-m) 50

0 Deep Induction (Ohm-m) 50

1000 CILD (mmho/m) 0

50 RILD X10 (Ohm-m) 500

50 RLL3 X10 (Ohm-m) 500



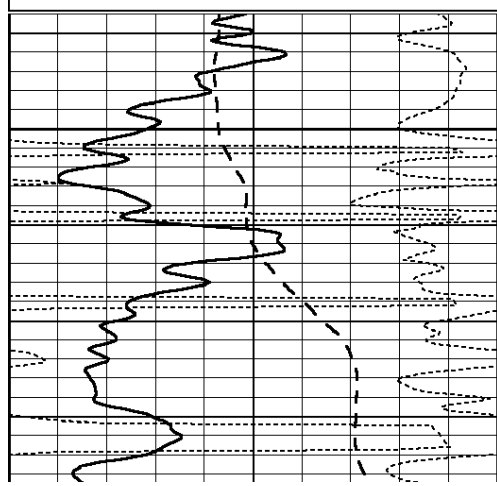
SUPERIOR
Hays,
Kansas

MAIN SECTION

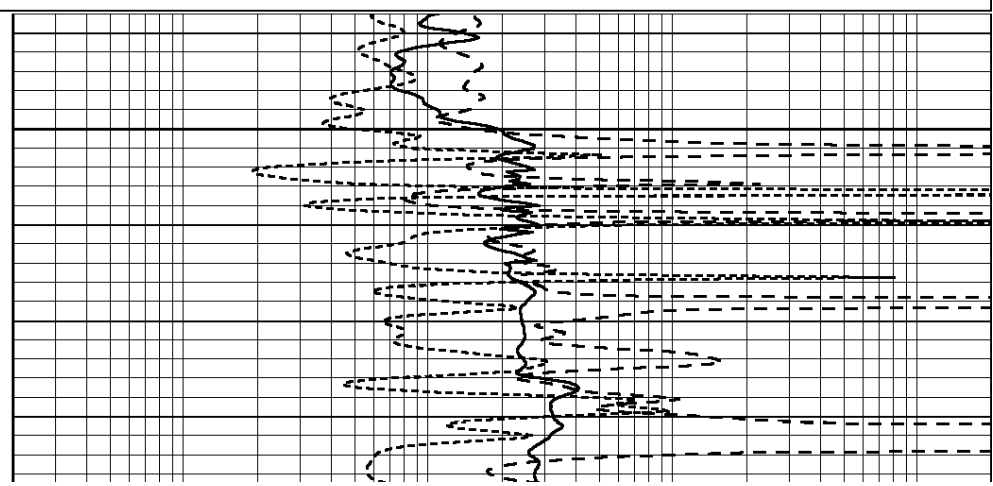
Database File: 009113ddn.db
 Dataset Pathname: pass3.2A
 Presentation Format: dil
 Dataset Creation: Tue May 08 03:31:28 2012
 Charted by: Depth in Feet scaled 1:240

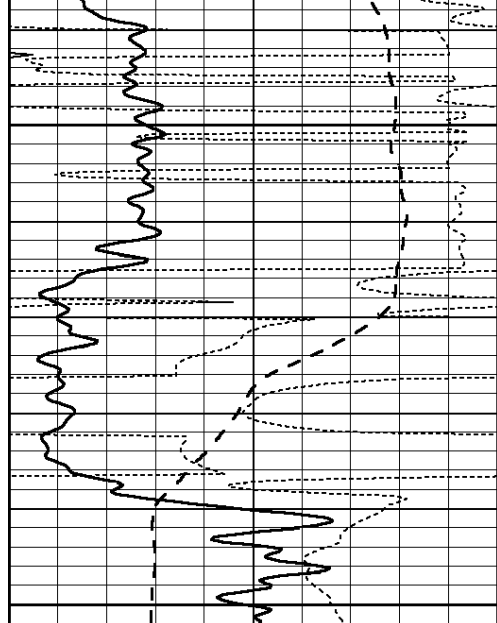
0	GAMMA RAY (GAPI)	150
-100	SP (mV)	100
-250	RxoRt	50
0	MINMK	20

0.2	RLL3 (Ohm-m)	2000
0.2	DEEP INDUCTION (Ohm-m)	2000
0.2	MEDIUM INDUCTION (Ohm-m)	2000



2400

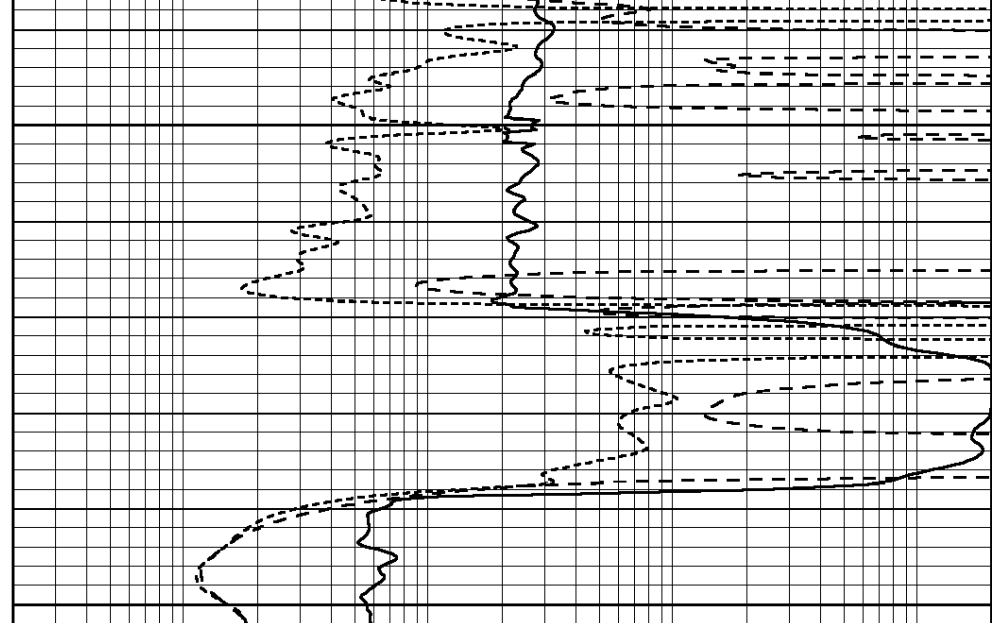




2450

2500

0	GAMMA RAY (GAPI)	150
-100	SP (mV)	100
-250	RxoRt	50
0	MINMK	20



0.2	RLL3 (Ohm-m)	2000
0.2	DEEP INDUCTION (Ohm-m)	2000
0.2	MEDIUM INDUCTION (Ohm-m)	2000



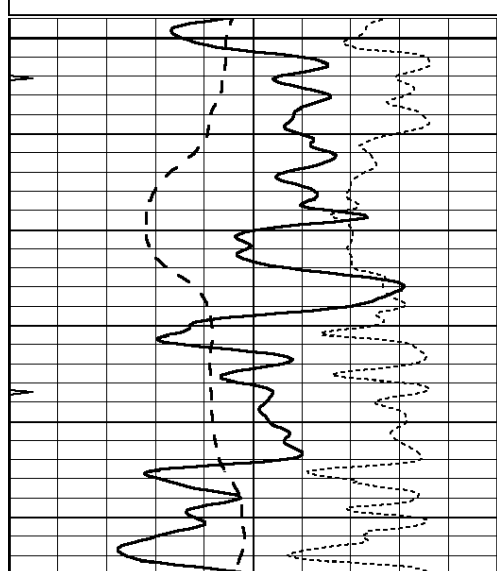
SUPERIOR
Hays,
Kansas

MAIN SECTION

Database File: 009113ddn.db
 Dataset Pathname: pass3.2A
 Presentation Format: dil
 Dataset Creation: Tue May 08 03:31:28 2012
 Charted by: Depth in Feet scaled 1:240

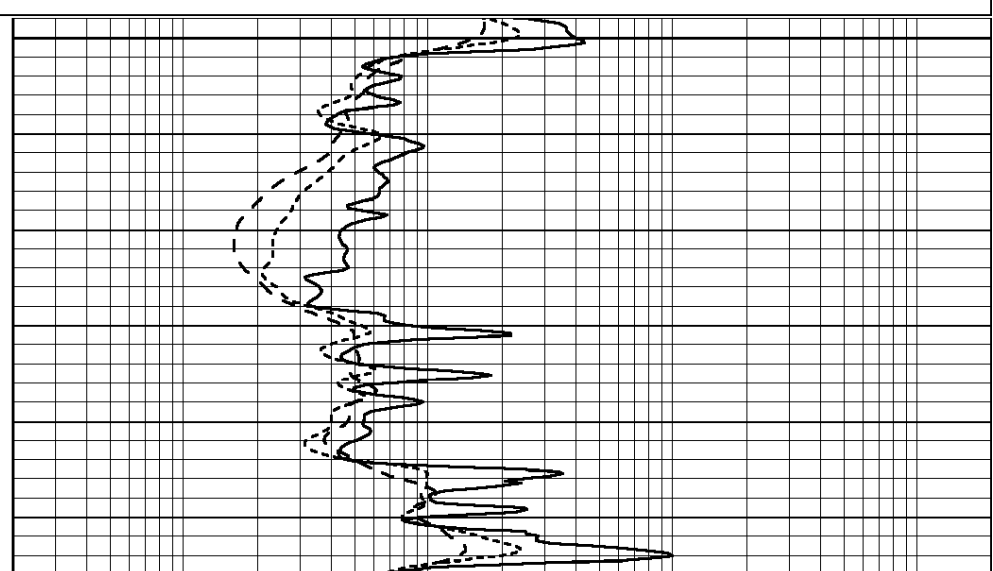
0	GAMMA RAY (GAPI)	150
-100	SP (mV)	100
-250	RxoRt	50
0	MINMK	20

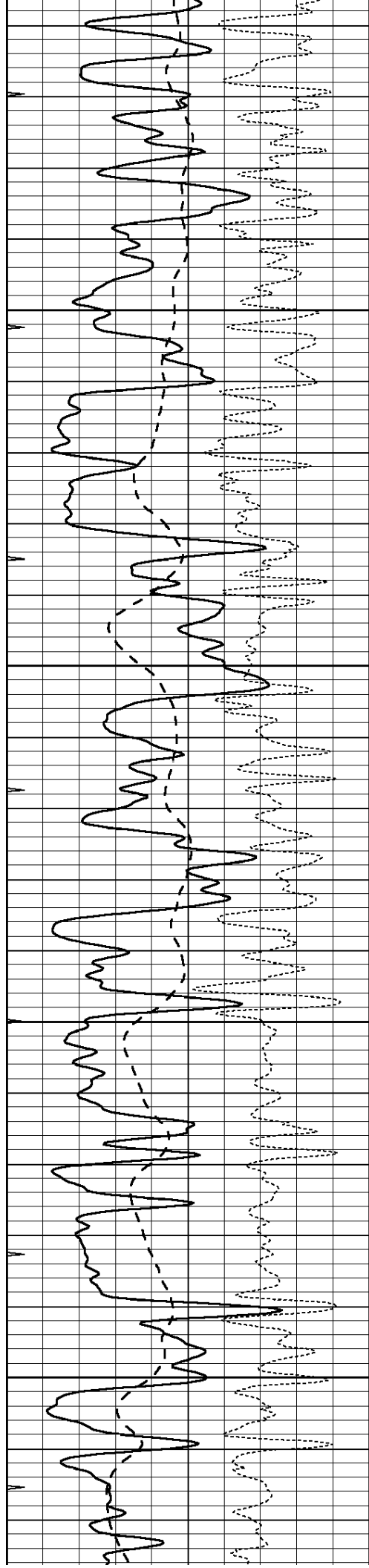
0.2	RLL3 (Ohm-m)	2000
0.2	DEEP INDUCTION (Ohm-m)	2000
0.2	MEDIUM INDUCTION (Ohm-m)	2000



3600

3650



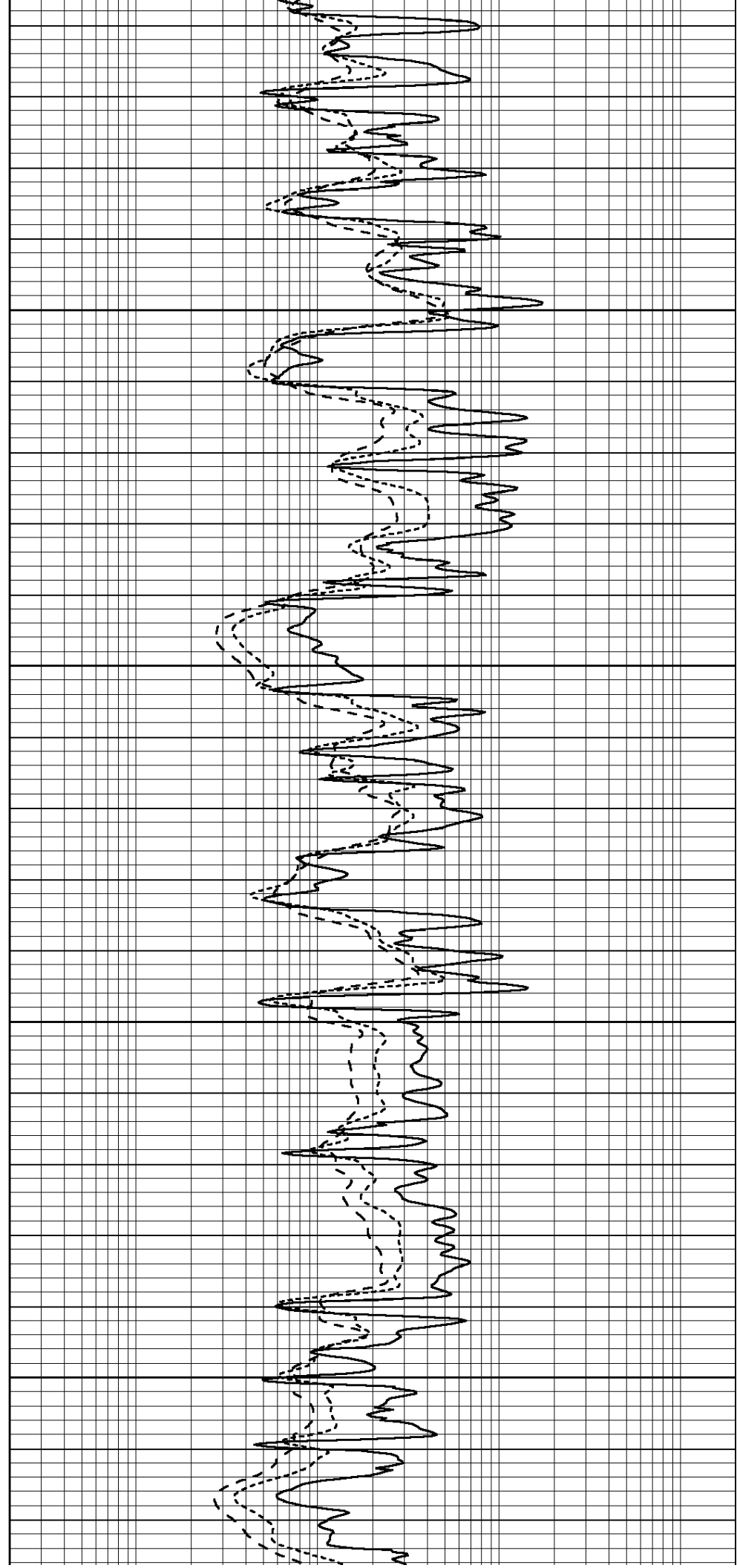


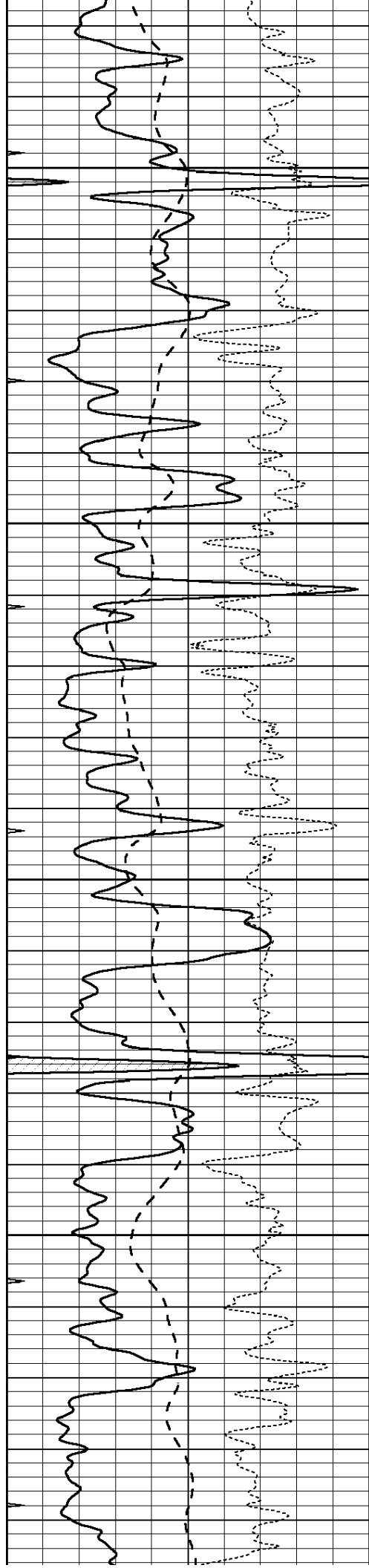
3700

3750

3800

3850



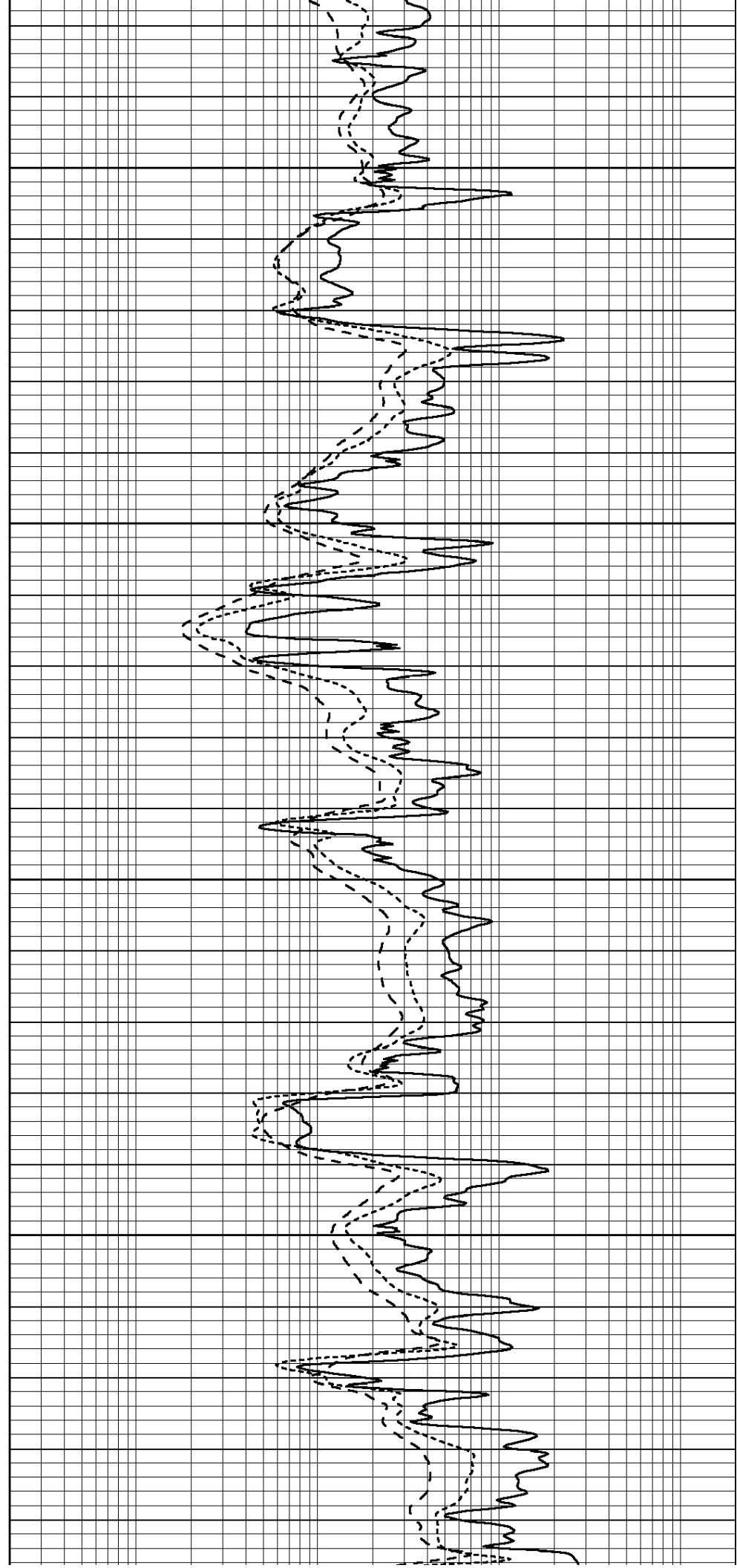


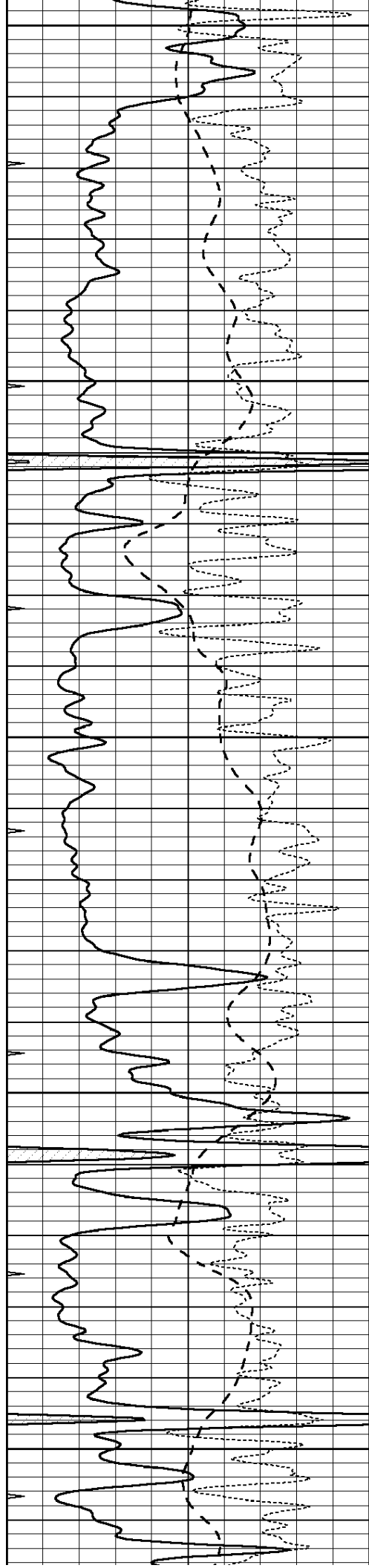
3900

3950

4000

4050





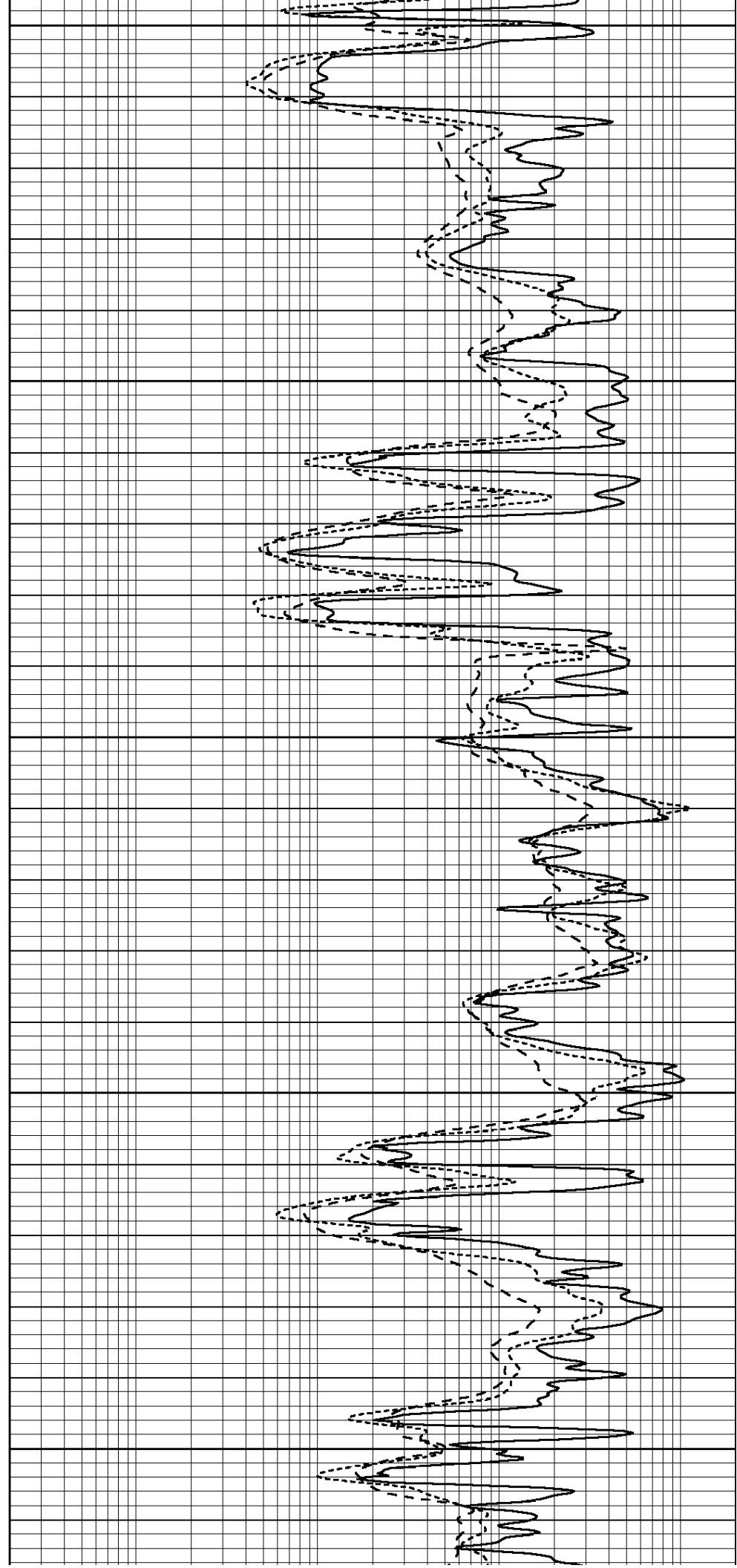
4100

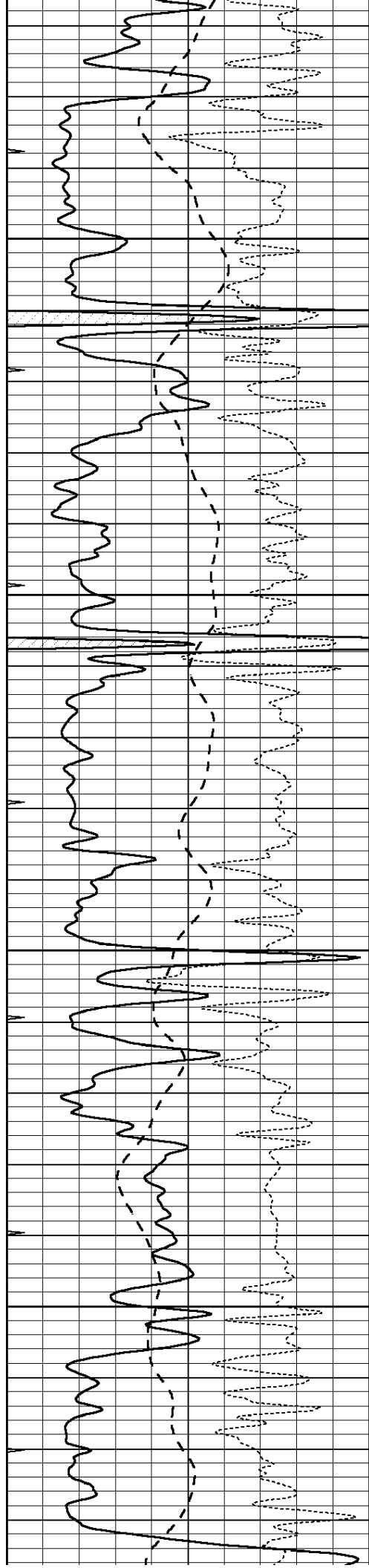
4150

4200

4250

4300



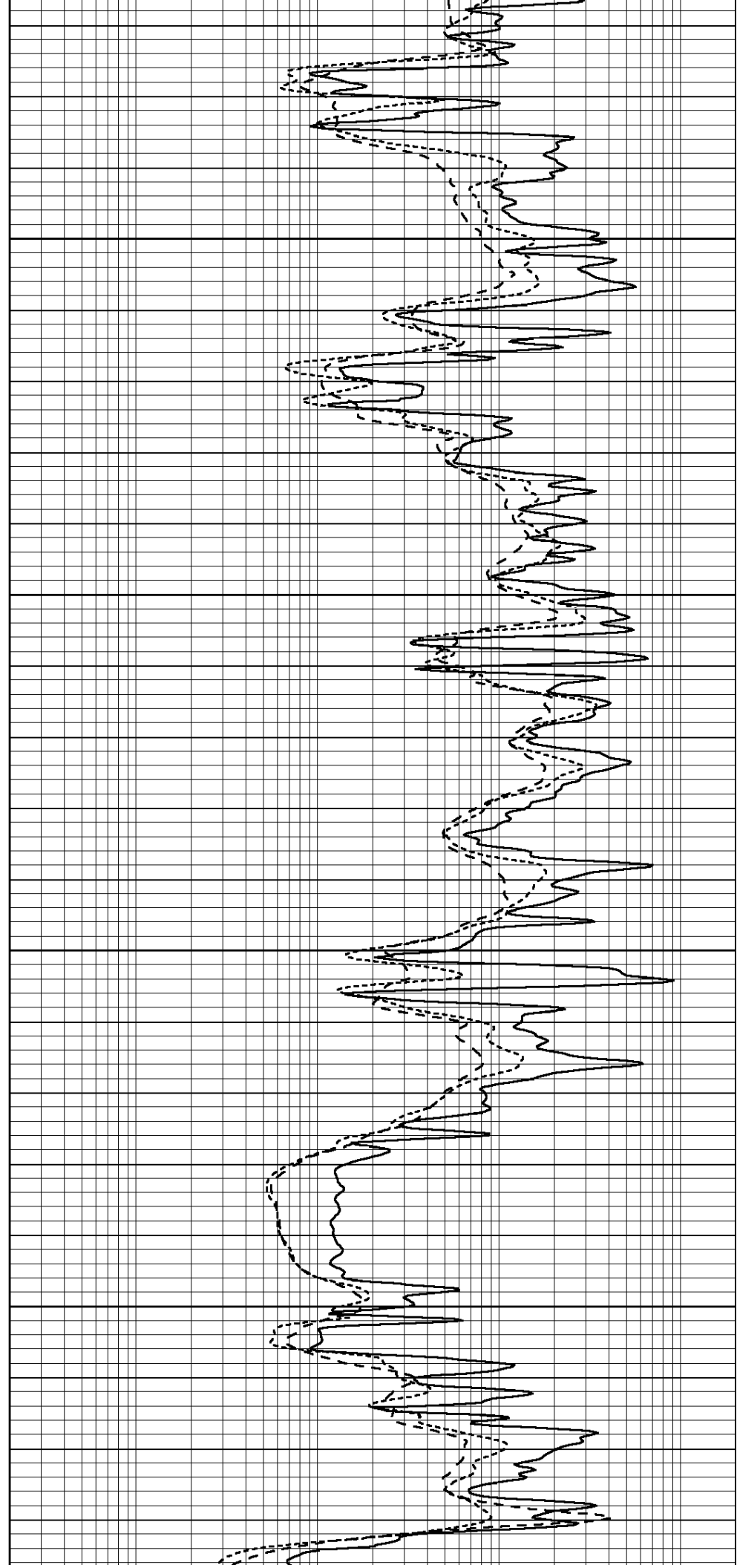


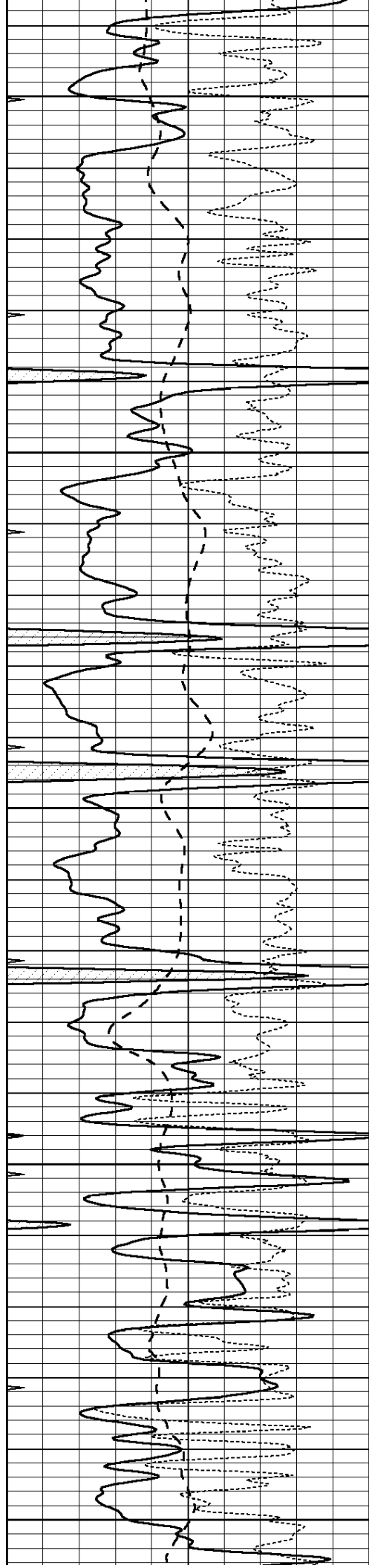
4350

4400

4450

4500





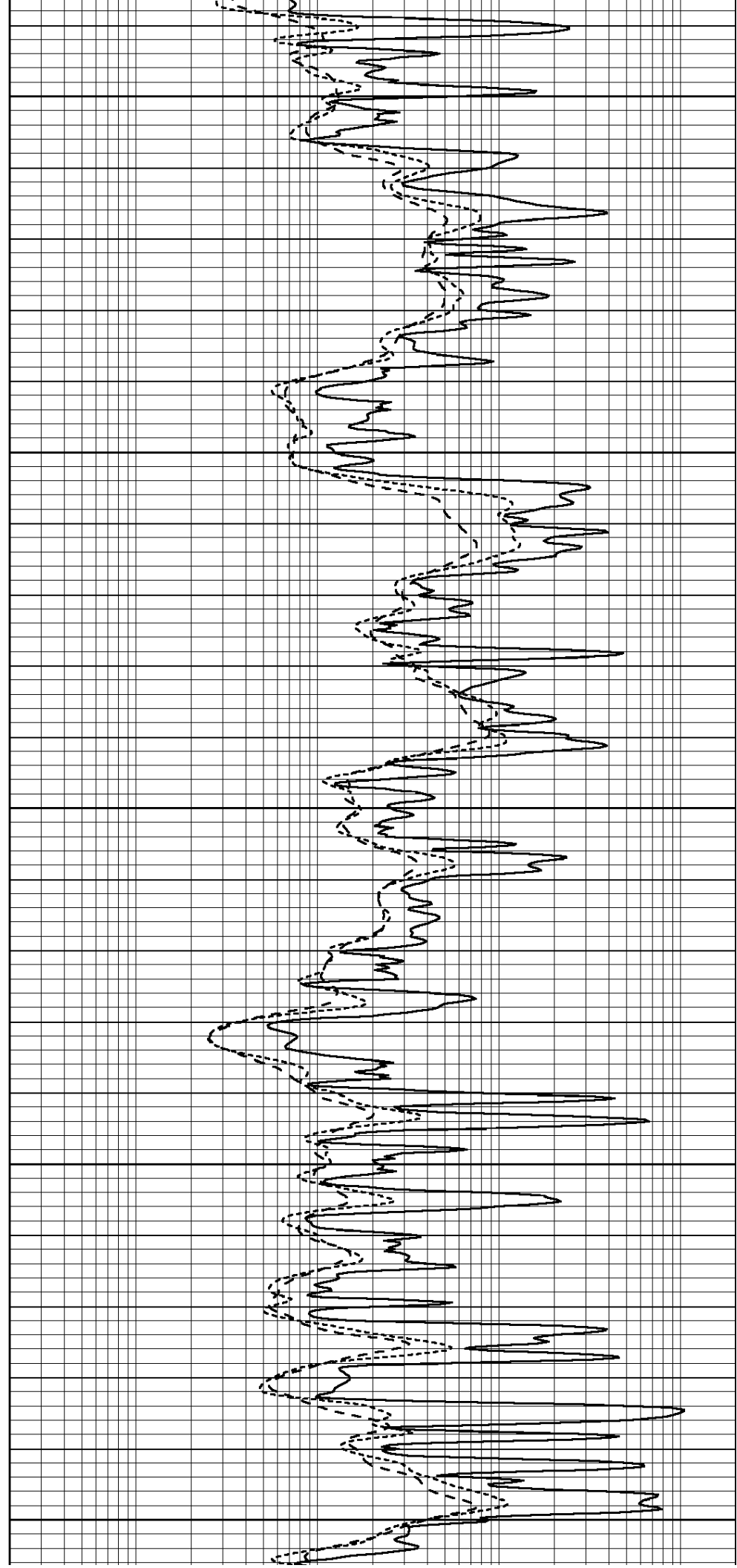
4550

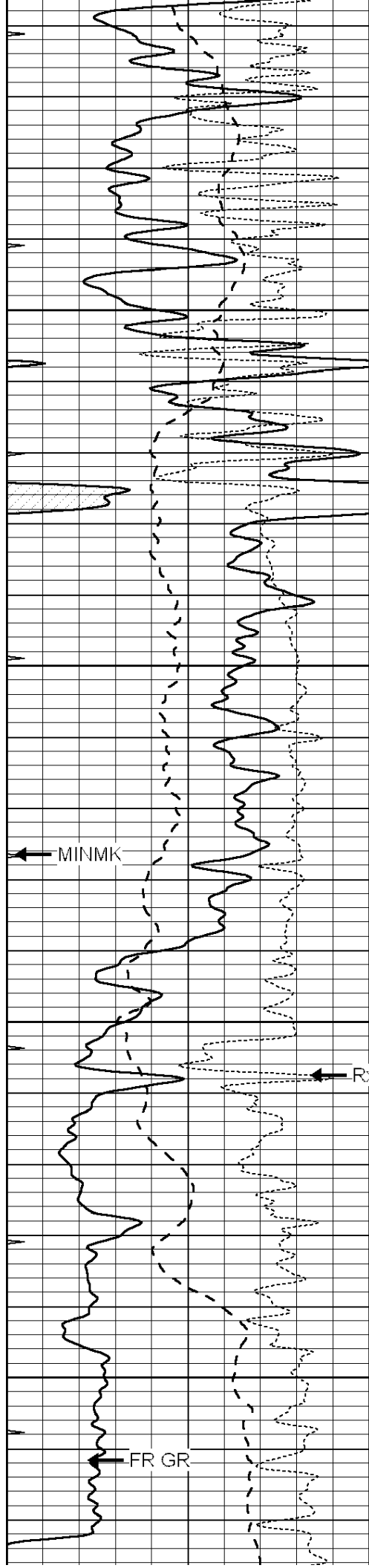
4600

4650

4700

4750





4800

4850

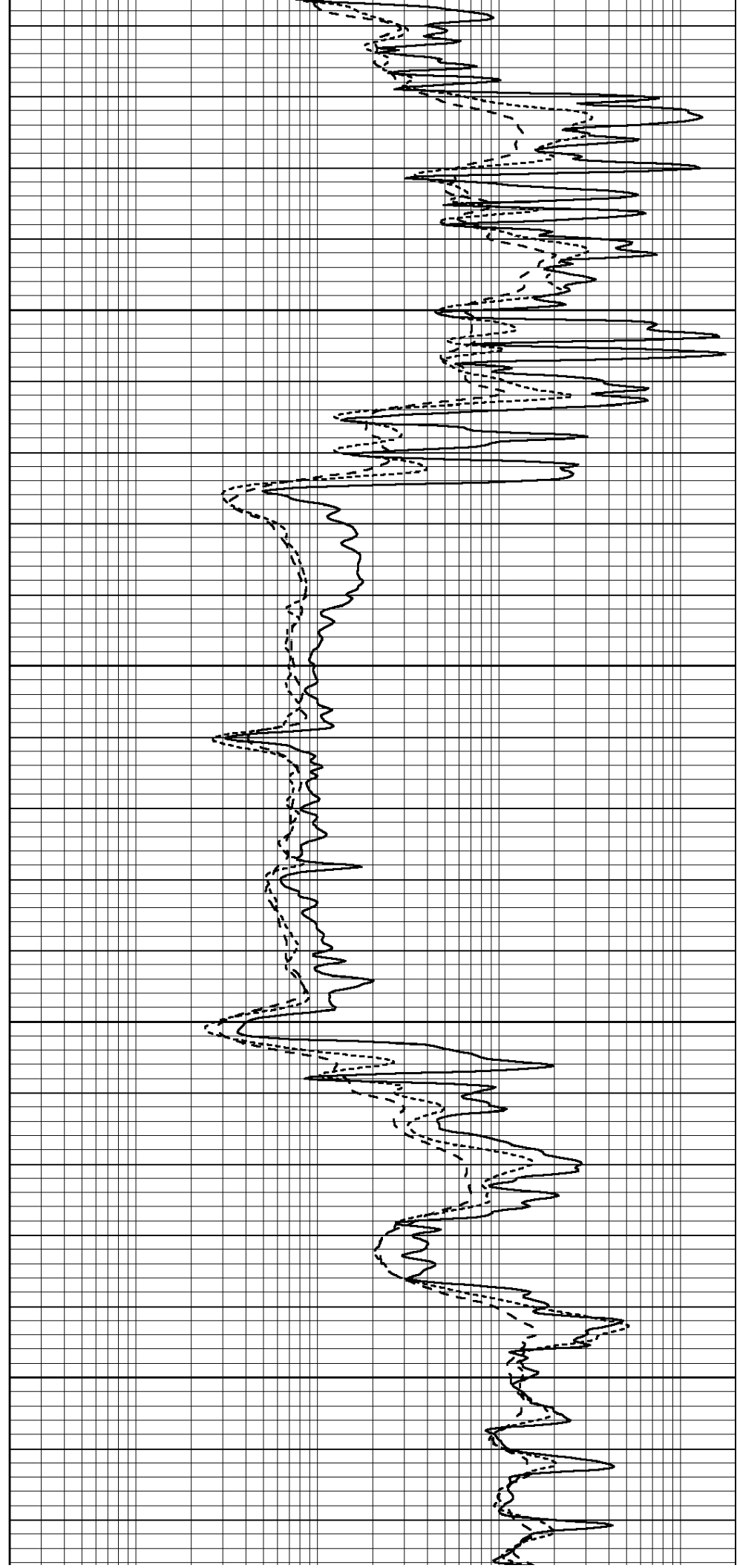
4900

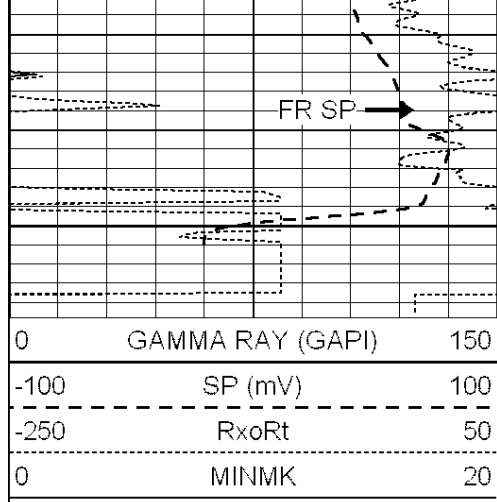
4950

MINMK

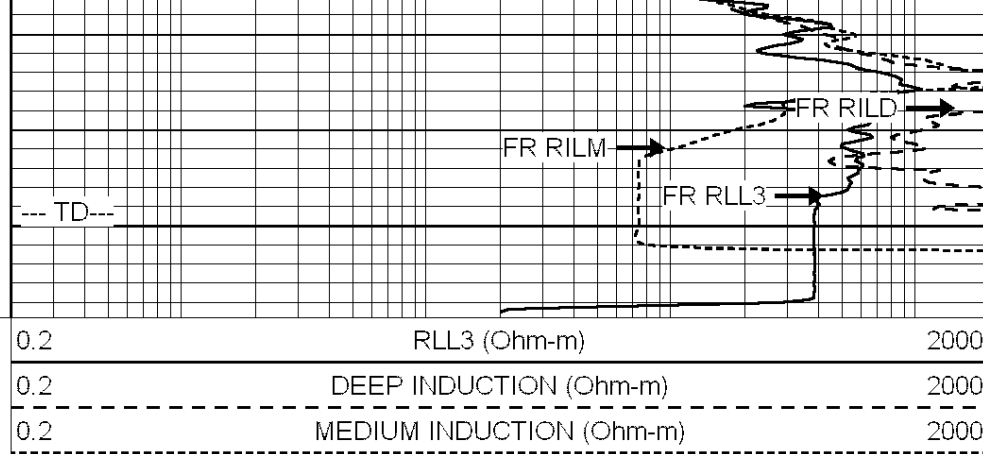
RxoRt

FR GR





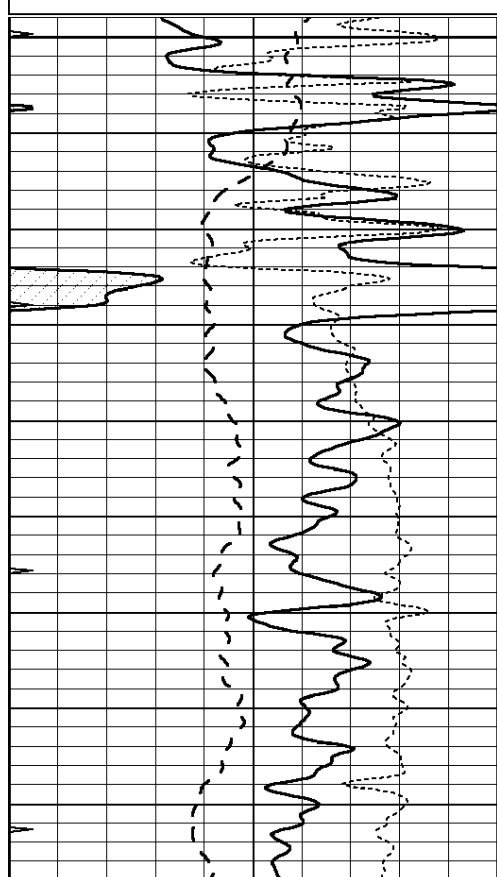
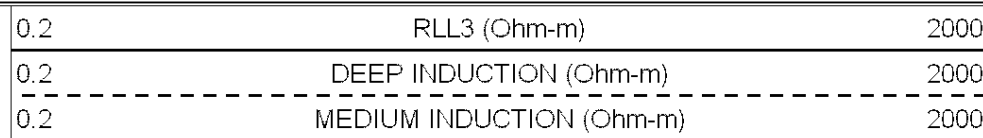
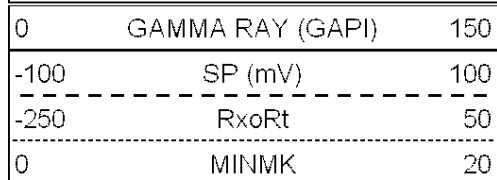
5000



SUPERIOR
Hays,
Kansas

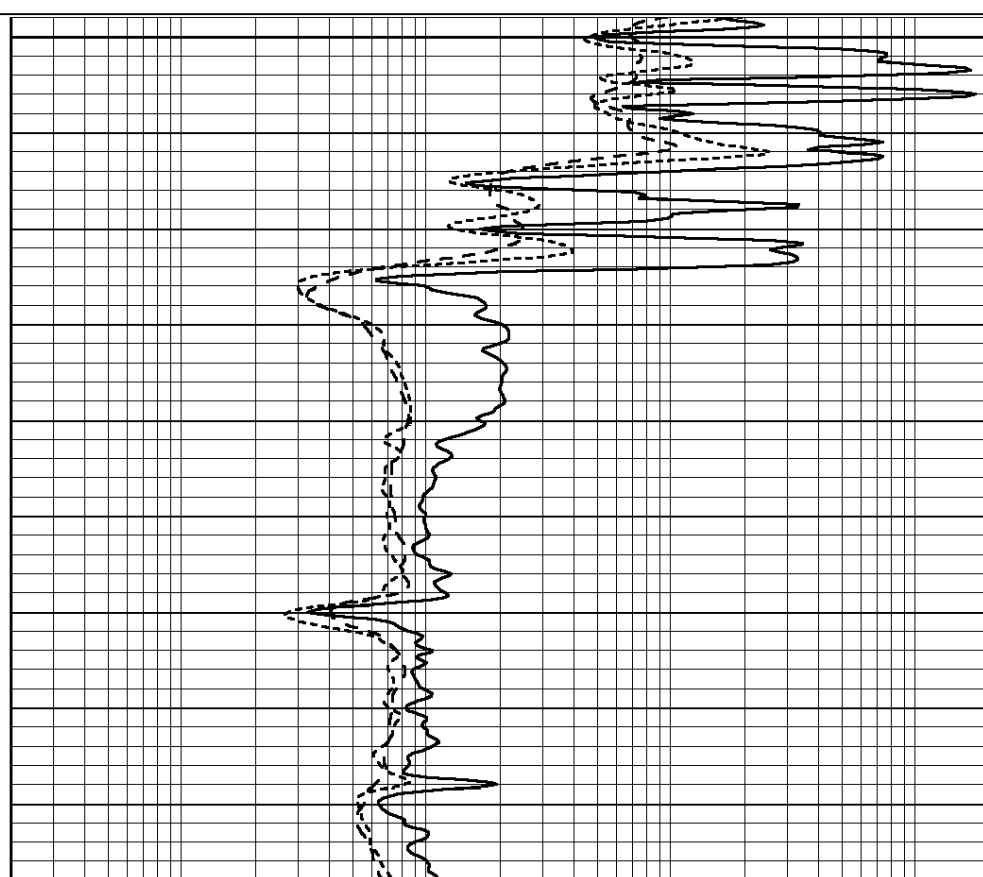
REPEAT SECTION

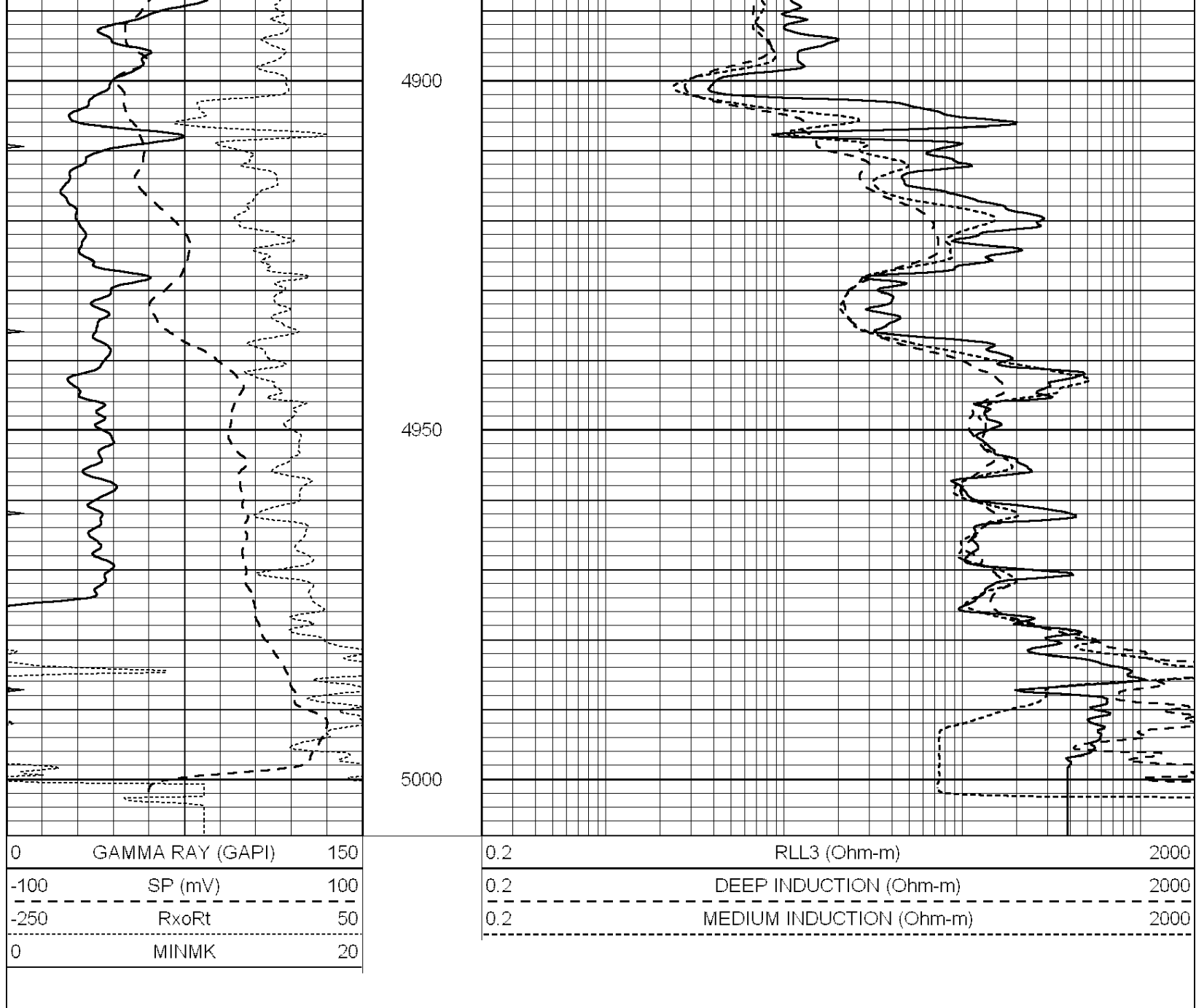
Database File: 009113ddn.db
 Dataset Pathname: pass2A
 Presentation Format: dil
 Dataset Creation: Tue May 08 03:39:13 2012
 Charted by: Depth in Feet scaled 1:240



4800

4850





Calibration Report

Database File: 009113ddn.db
 Dataset Pathname: pass3.2A
 Dataset Creation: Tue May 08 03:31:28 2012

Dual Induction Calibration Report

Serial-Model: PROBE9-DILG
 Surface Cal Performed: Tue May 08 01:25:03 2012
 Downhole Cal Performed: Mon Jul 28 12:02:56 2008
 After Survey Verification Performed: Mon Jul 28 12:02:56 2008

Surface Calibration

Loop:	Readings			References			Results	
	Air	Loop		Air	Loop		m	b
Deep	-0.014	0.629	V	0.000	400.000	mmho/m	550.000	-13.000
Medium	0.039	0.728	V	0.000	464.000	mmho/m	540.000	-15.000
Internal:	Zero	Cal		Zero	Cal		m	b

Deep	0.011	0.610	V	0.000	400.000	mmho/m	667.135	-7.256
Medium	0.005	0.712	V	0.000	464.000	mmho/m	655.677	-3.102

Downhole Calibration

	Readings			References			Results	
	Zero	Cal		Zero	Cal		m'	b'
Deep	0.000	0.000	mmho/m	14.508	388.384	mmho/m	1.000	0.000
Medium	0.000	0.000	mmho/m	166.367	504.400	mmho/m	1.000	0.000
LL3		7.500	V		1400.000	Ohm-m		
		0.000	V		20.000	Ohm-m		
		-7.200	V		3970.000	mmho-m		

After Survey Verification

	Readings			Targets			Results	
	Zero	Cal		Zero	Cal		m'	b'
Deep	0.000	0.000	mmho/m	0.000	0.000	mmho/m	0.000	0.000
Medium	0.000	0.000	mmho/m	0.000	0.000	mmho/m	0.000	0.000
LL3		1.000	Ohm-m		1.000	Ohm-m		
		0.000	Ohm-m		0.000	Ohm-m		
		1.000	mmho-m		1.000	mmho-m		

Compensated Density Calibration Report

Serial-Model: GEAR1-GEARHART
 Source / Verifier: 147 / 147
 Master Calibration Performed: Tue May 08 01:20:08 2012

Master Calibration

	Density		Far Detector	Near Detector	
Magnesium	1.710	g/cc	1243.76	629.14	cps
Aluminum	2.590	g/cc	282.16	435.01	cps
Spine Angle = 76.03			Density/Spine Ratio = 0.576		
	Size		Reading		
Small Ring	9.50	in	3.50	V	
Large Ring	14.50	in	5.30	V	

Compensated Neutron Calibration Report

Serial Number: NUE_2I
 Tool Model: G

CALIBRATION

Detector	Readings		Target		Normalization
Short Space	1.00	cps	1.00	cps	1.0000
Long Space	1.00	cps	1.00	cps	1.0000

Gamma Ray Calibration Report

Serial Number: GR5
 Tool Model: OPEN
 Performed: Tue May 08 01:29:30 2012

Calibrator Value: 1.0 GAPI
 Background Reading: 0.0 cps
 Calibrator Reading: 1.0 cps
 Sensitivity: 0.7000 GAPI/cps

