

**SUPERIOR
Hays,
Kansas**

**COMPENSATED
DENSITY / NEUTRON
LOG**

Company RITCHIE EXPLORATION, INC.
Well SIMONS 14 CD #1
Field WILDCAT
County WICHITA State KANSAS

Company RITCHIE EXPLORATION, INC.
Well SIMONS 14 CD #1
Field WILDCAT
County WICHITA
State KANSAS

Location: API #: 15-203-20177
350' FSL & 2030' FEL
SEC 14 TWP 17S RGE 35W
Permanent Datum GROUND LEVEL Elevation 3167
Log Measured From KELLY BUSHING 10' A.G.L.
Drilling Measured From KELLY BUSHING
Other Services
DIL
Elevation
K.B. 3177
D.F.
G.L. 3167

Date	5-8-12
Run Number	ONE
Depth Driller	5000
Depth Logger	4999
Bottom Logged Interval	4975
Top Log Interval	3600
Casing Driller	255
Casing Logger	254
Bit Size	7.875
Type Fluid in Hole	CHEMICAL MUD
Density / Viscosity	9.3 / 50
pH / Fluid Loss	9.5 / 9.6
Source of Sample	FLOWLINE
Rm @ Meas. Temp	0.60 @ 89F
Rmf @ Meas. Temp	0.45 @ 89F
Rmc @ Meas. Temp	0.72 @ 89F
Source of Rmf / Rmc	MEASURED
Rm @ BHT	.430 @ 125F
Time Circulation Stopped	3 HOURS
Time Logger on Bottom	12:15 A.M.
Maximum Recorded Temperature	125F
Equipment Number	860
Location	HAYS, KS.
Recorded By	RUPP
Witnessed By	MAX LOVELLY

<<< Fold Here >>>

All interpretations are opinions based on inferences from electrical or other measurements and we cannot and do not guarantee the accuracy or correctness of any interpretation, and we shall not, except in the case of gross or willful negligence on our part, be liable or responsible for any loss, costs, damages, or expenses incurred or sustained by anyone resulting from any interpretation made by any of our officers, agents or employees. These interpretations are also subject to our general terms and conditions set out in our current Price Schedule.

Comments

SUPERIOR WELL SERVICES
785-628-6395
THANK YOU FOR YOUR BUSINESS
DIRECTIONS: SCOTT CITY, 12W TO WICHITA C.L., 6N, 1W, S INTO.

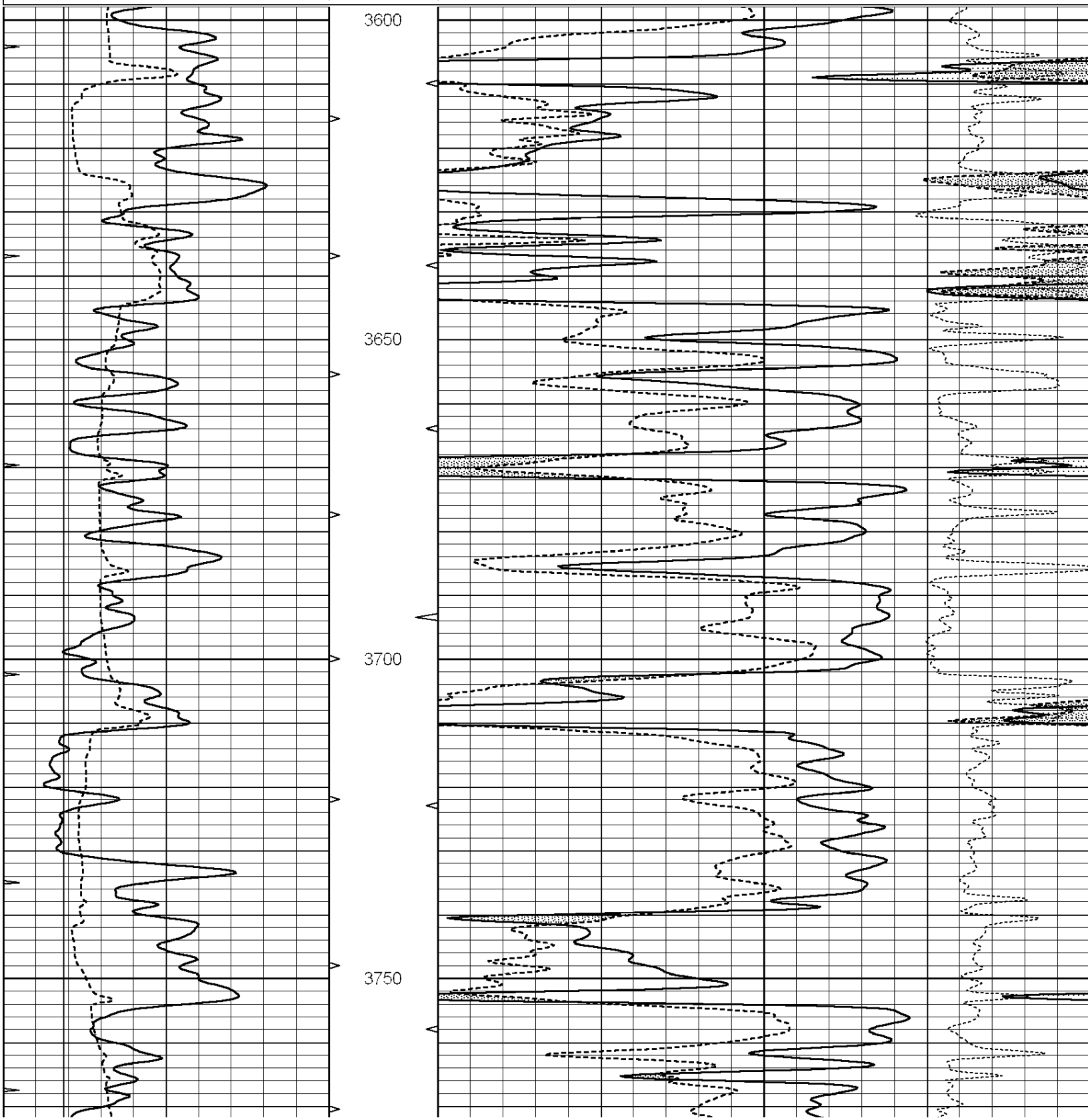


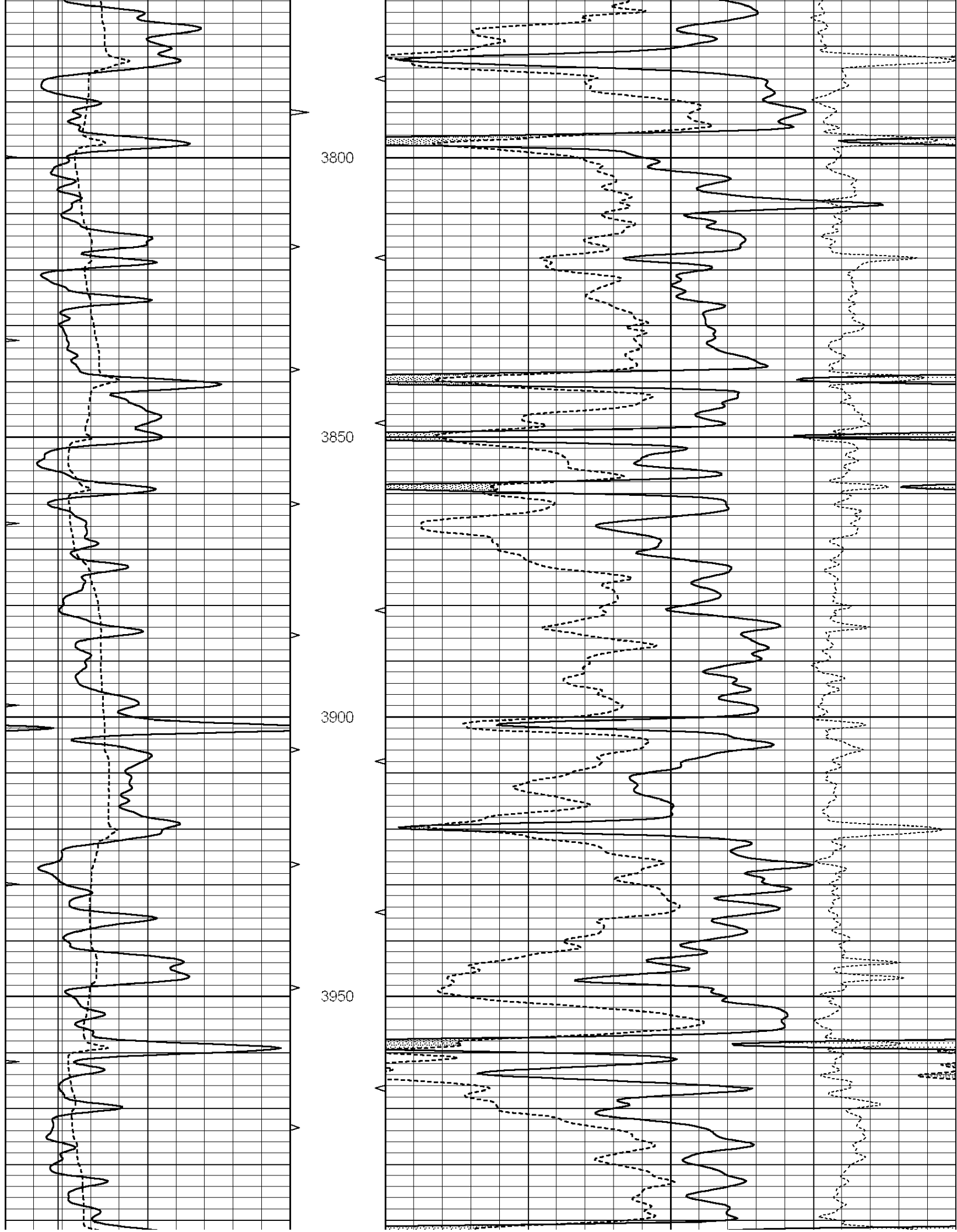
**SUPERIOR
Hays,
Kansas**

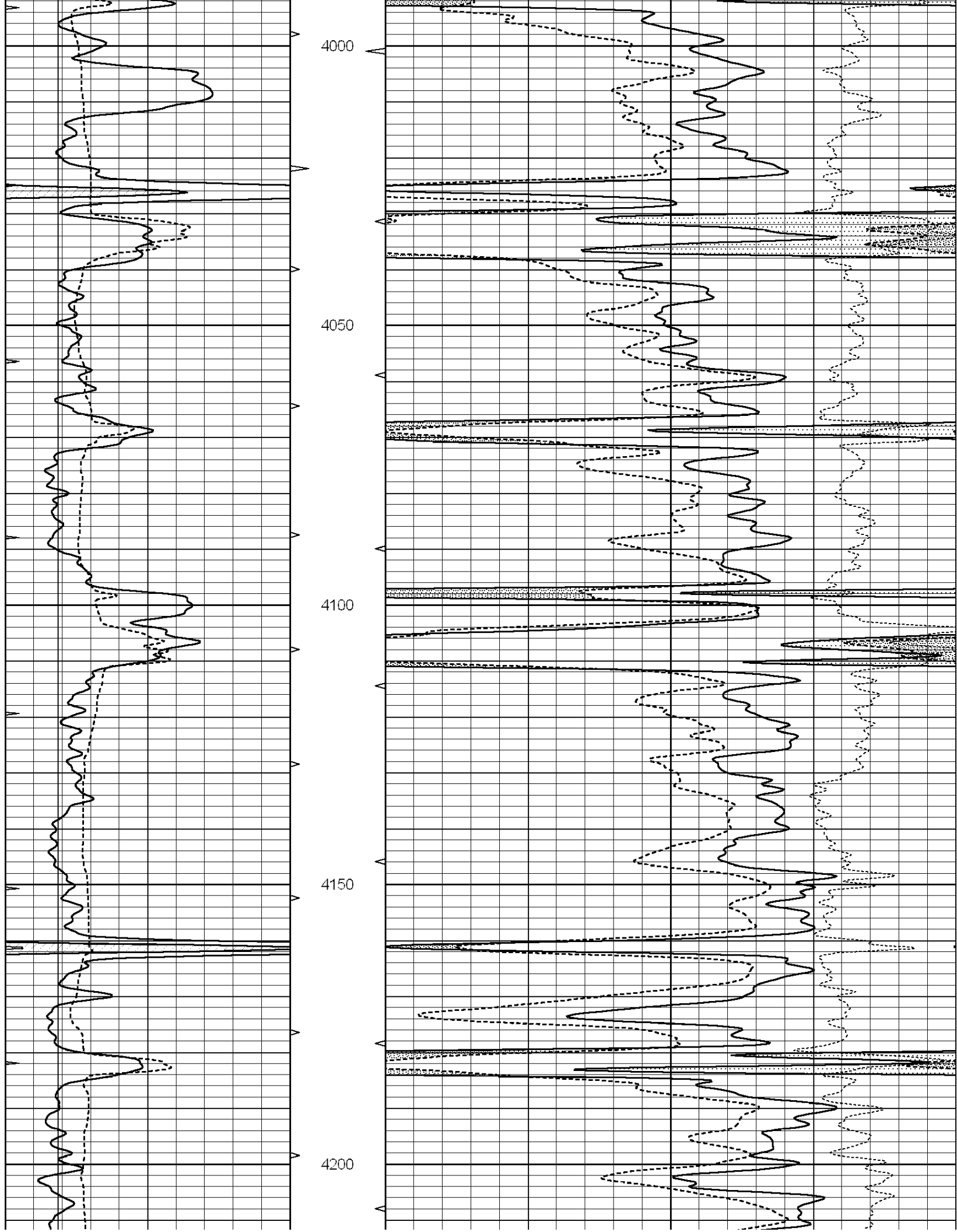
MAIN SECTION

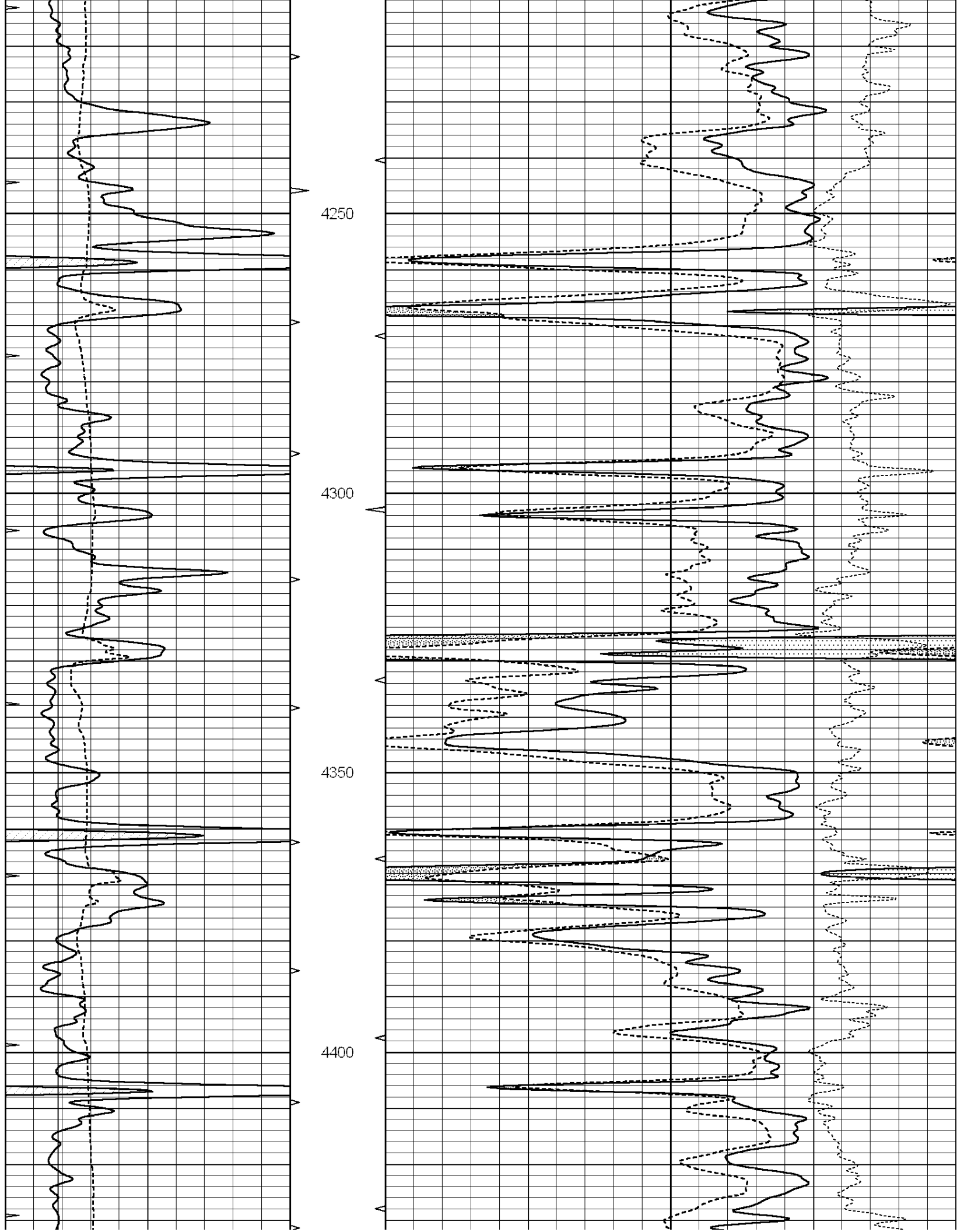
Database File: 009113ddn.db
 Dataset Pathname: pass3.2A
 Presentation Format: den_neu
 Dataset Creation: Tue May 08 03:31:28 2012
 Charted by: Depth in Feet scaled 1:240

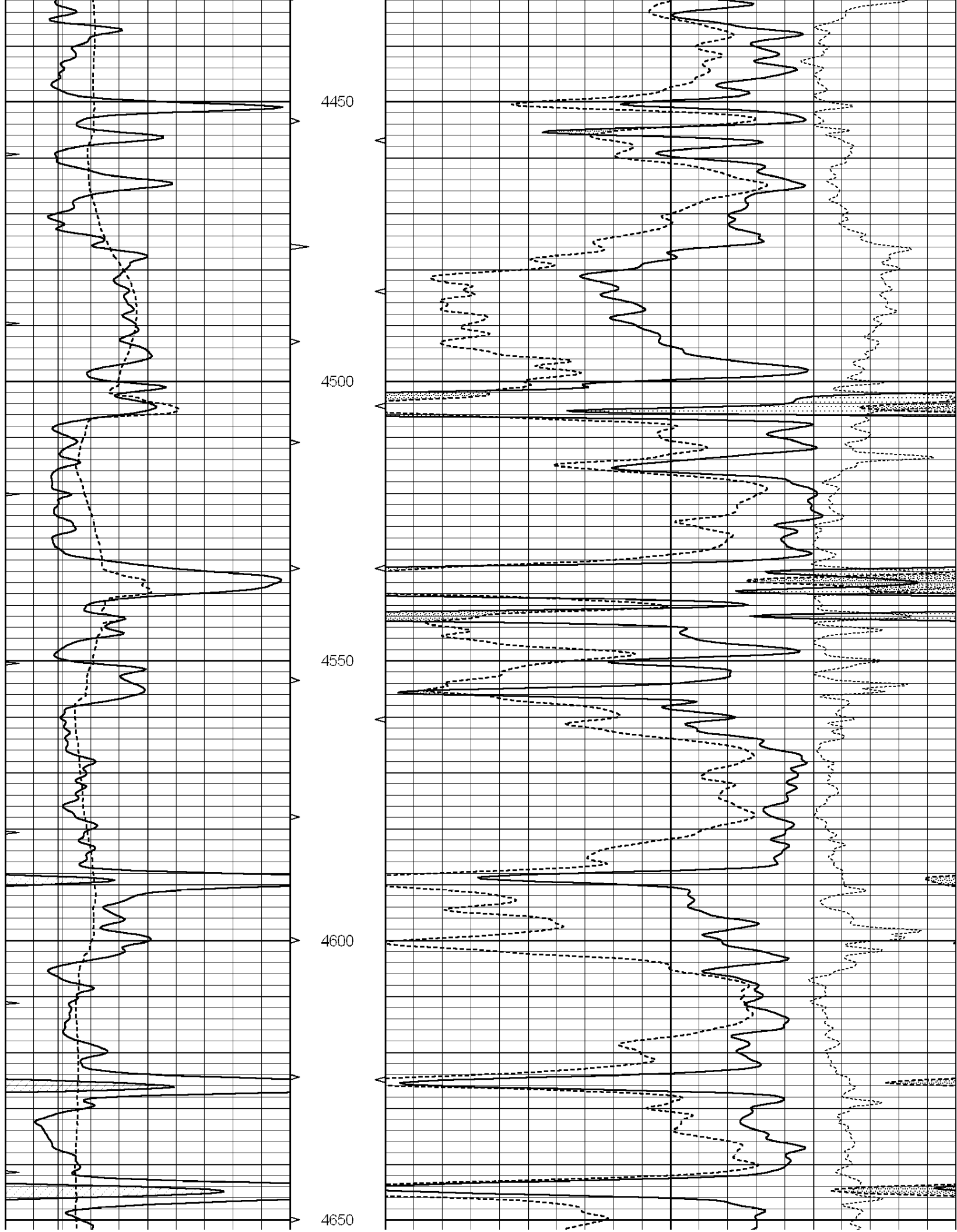
0	GAMMA RAY (GAPI)	150	ABHV	30	COMPENSATED DENSITY (pu)	-10
6	CALIPER (in)	16	10 (ft3)	0 30	COMPENSATED NEUTRON (pu)	-10
0	MINMK	20	TBHV		-0.25 CORRECTION (g/cc)	0.25
			0 (ft3)	10		

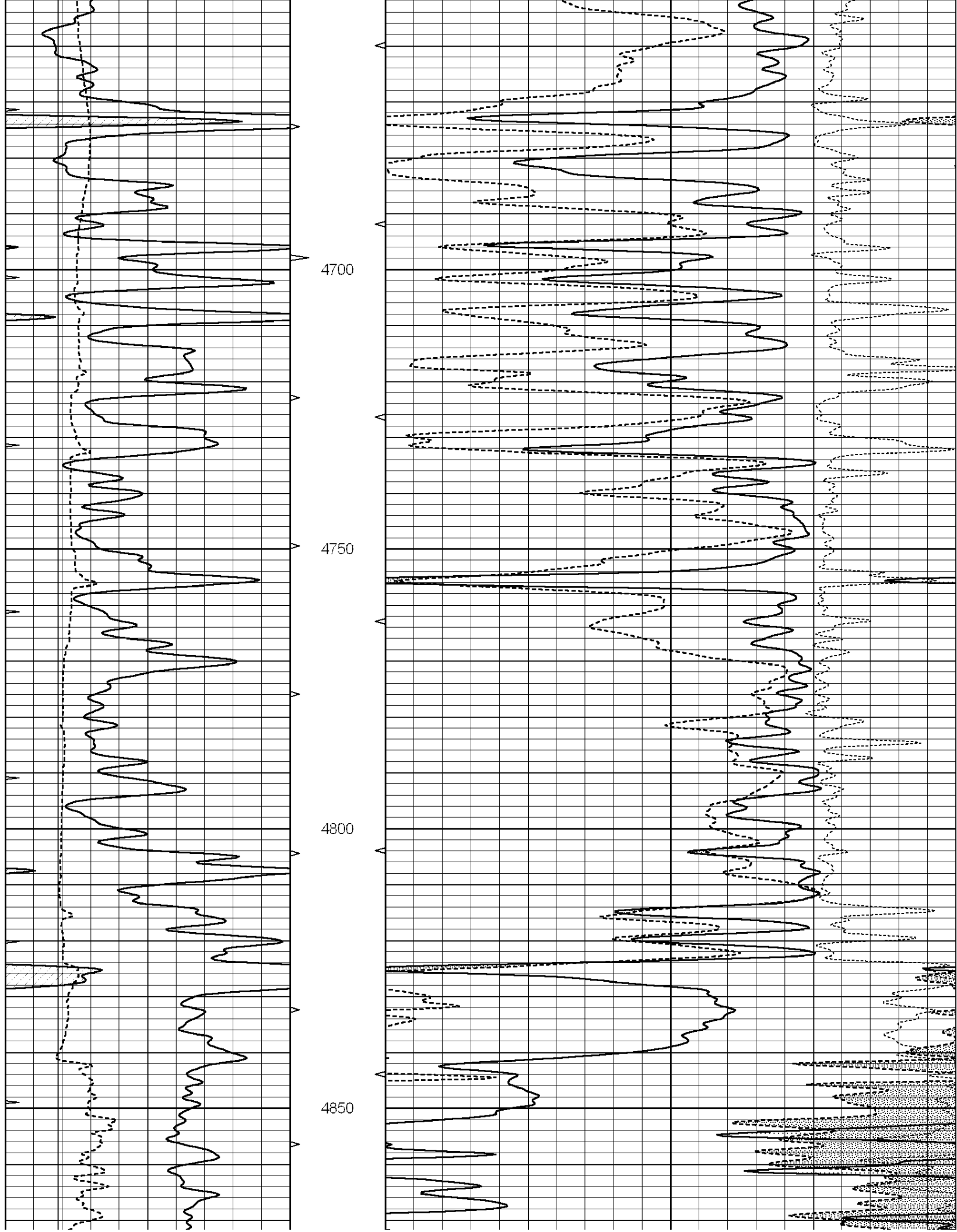


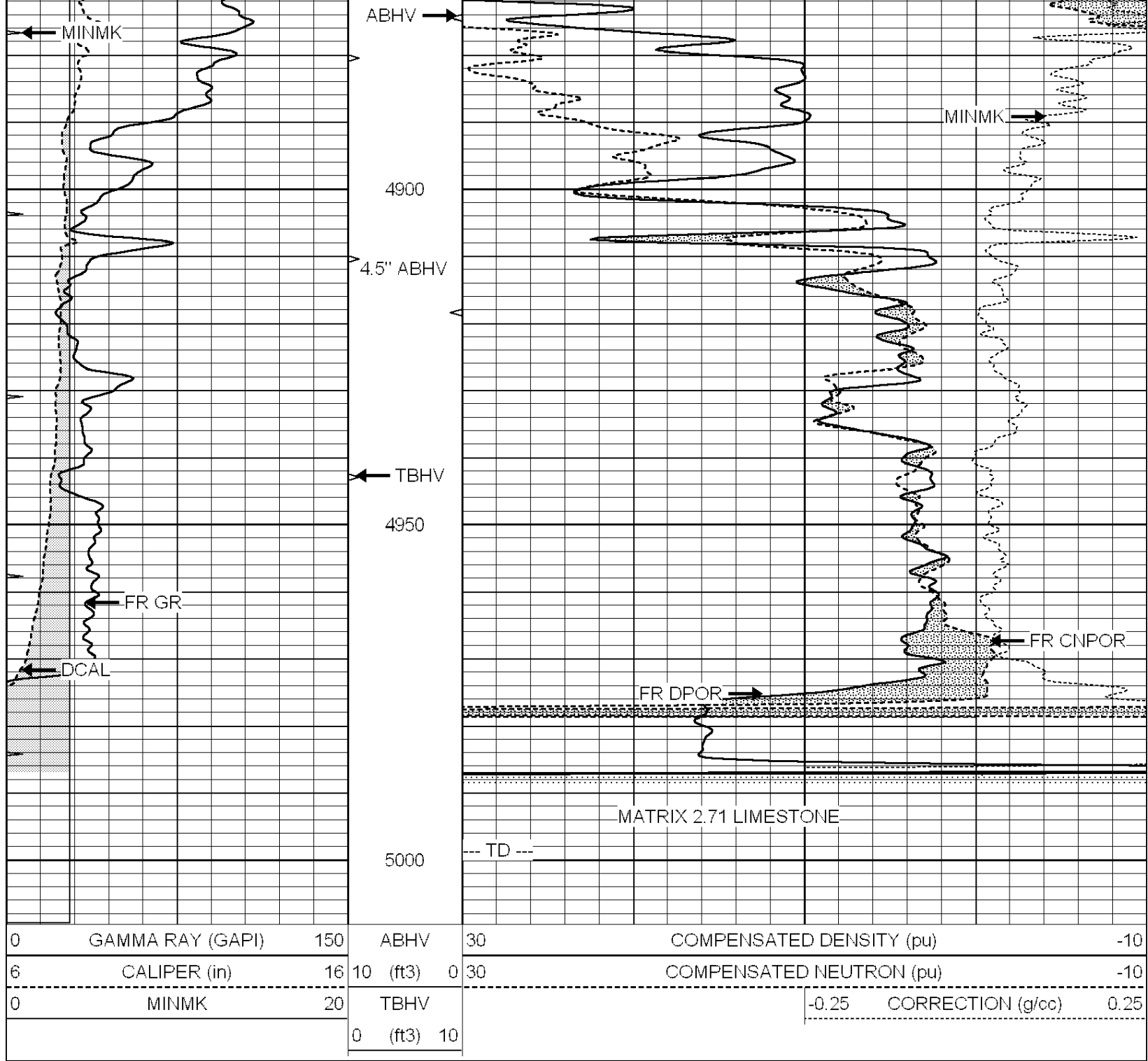












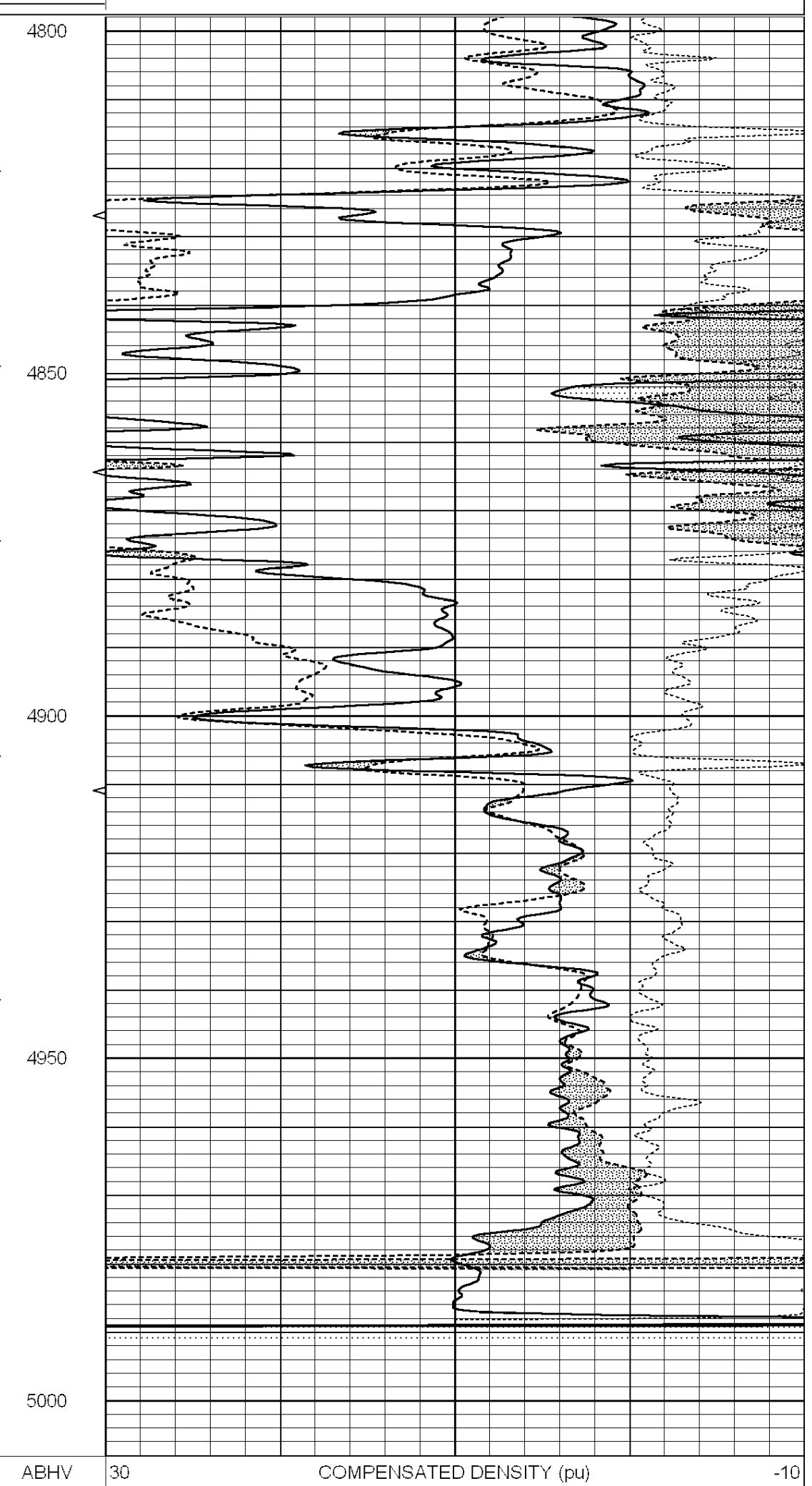
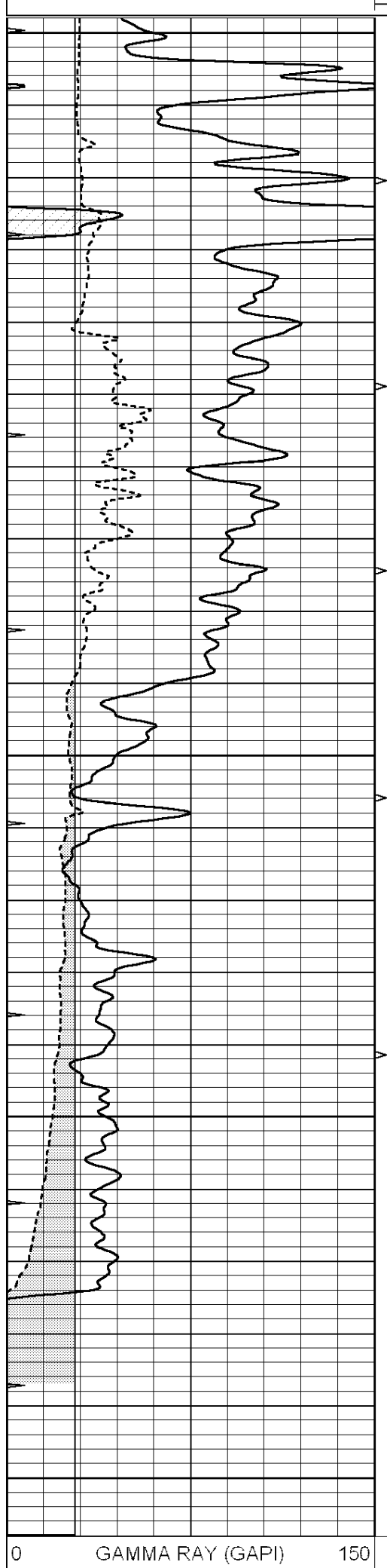

SUPERIOR
WELL SERVICES

SUPERIOR
Hays,
Kansas

REPEAT SECTION

Database File: 009113ddn.db
 Dataset Pathname: pass2A
 Presentation Format: den_neu
 Dataset Creation: Tue May 08 03:39:13 2012
 Charted by: Depth in Feet scaled 1:240

0	GAMMA RAY (GAPI)	150	ABHV	30	COMPENSATED DENSITY (pu)	-10
6	CALIPER (in)	16	10 (ft3)	0 30	COMPENSATED NEUTRON (pu)	-10
0	MINMK	20	TBHV		-0.25 CORRECTION (g/cc)	0.25
			0 (ft3)	10		



U (ft.3) 10

0 GAMMA RAY (GAPI) 150

ABHV 30 COMPENSATED DENSITY (pu) -10

6	CALIPER (in)	16	10 (ft3)	0	30	COMPENSATED NEUTRON (pu)	-10
0	MINMK	20	TBHV			-0.25	CORRECTION (g/cc) 0.25
			0 (ft3)	10			

Calibration Report

Database File: 009113ddn.db
 Dataset Pathname: pass3.2A
 Dataset Creation: Tue May 08 03:31:28 2012

Dual Induction Calibration Report

Serial-Model: PROBE9-DILG
 Surface Cal Performed: Tue May 08 01:25:03 2012
 Downhole Cal Performed: Mon Jul 28 12:02:56 2008
 After Survey Verification Performed: Mon Jul 28 12:02:56 2008

Surface Calibration

Loop:	Readings			References			Results	
	Air	Loop		Air	Loop		m	b
Deep	-0.014	0.629	V	0.000	400.000	mmho/m	550.000	-13.000
Medium	0.039	0.728	V	0.000	464.000	mmho/m	540.000	-15.000
Internal:	Zero	Cal		Zero	Cal		m	b
Deep	0.011	0.610	V	0.000	400.000	mmho/m	667.135	-7.256
Medium	0.005	0.712	V	0.000	464.000	mmho/m	655.677	-3.102

Downhole Calibration

	Readings			References			Results	
	Zero	Cal		Zero	Cal		m'	b'
Deep	0.000	0.000	mmho/m	14.508	388.384	mmho/m	1.000	0.000
Medium	0.000	0.000	mmho/m	166.367	504.400	mmho/m	1.000	0.000
LL3		7.500	V		1400.000	Ohm-m		
		0.000	V		20.000	Ohm-m		
		-7.200	V		3970.000	mmho-m		

After Survey Verification

	Readings			Targets			Results	
	Zero	Cal		Zero	Cal		m'	b'
Deep	0.000	0.000	mmho/m	0.000	0.000	mmho/m	0.000	0.000
Medium	0.000	0.000	mmho/m	0.000	0.000	mmho/m	0.000	0.000
LL3		1.000	Ohm-m		1.000	Ohm-m		
		0.000	Ohm-m		0.000	Ohm-m		
		1.000	mmho-m		1.000	mmho-m		

Compensated Density Calibration Report

Serial-Model: GEAR1-GEARHART
 Source / Verifier: 147 / 147
 Master Calibration Performed: Tue May 08 01:20:08 2012

Master Calibration

	Density		Far Detector	Near Detector	
Magnesium	1.710	g/cc	1243.76	629.14	cps
Aluminum	2.590	g/cc	282.16	435.01	cps
	Spine Angle = 76.03		Density/Spine Ratio = 0.576		
	Size		Reading		

	Size		Reading	
Small Ring	9.50	in	3.50	V
Large Ring	14.50	in	5.30	V

Compensated Neutron Calibration Report

Serial Number: NUE_2I
 Tool Model: G

CALIBRATION

Detector	Readings	Target	Normalization
Short Space	1.00 cps	1.00 cps	1.0000
Long Space	1.00 cps	1.00 cps	1.0000

Gamma Ray Calibration Report

Serial Number: GR5
 Tool Model: OPEN
 Performed: Tue May 08 01:29:30 2012

Calibrator Value: 1.0 GAPI

Background Reading: 0.0 cps
 Calibrator Reading: 1.0 cps

Sensitivity: 0.7000 GAPI/cps