



**MIDWEST SURVEYS**  
 LOGGING - PERFORATING - CONSULTING SERVICES  
 P.O. Box 88, Osawatomie, KS 66084  
 913 / 755 - 2128

**GAMMA RAY / NEUTRON / CCL**

File No.

Company **EnerJex Kansas, Inc.**

Well **Dreher No. BSI-DR-10**

Field **Paola - Rantoul**

County **Franklin** State **Kansas**

Location **340' FSL & 1320' FEL**

**N/2-S/2-S/2-SE**

Sec. **8** Twp. **18S** Rge. **21E**

Permament Datum **GL** Elevation **NA**

Log Measured From **GL**

Drilling Measured From **GL**

Other Services  
Perforate

Elevation  
K.B. NA  
D.F. NA  
G.L. NA

Date

09-07-2012

Run Number

One

Depth Driller

640.0

Depth Logger

607.8

Bottom Logged Interval

606.8

Top Log Interval

20.0

Fluid Level

Full

Type Fluid

Water

Density / Viscosity

NA

Salinity - PPM Cl

NA

Max. Recorded Temp

NA

Estimated Cement Top

0.0

Equipment No.

107

Location

Osawatomie

Recorded By

Steve Winkelsch

Witnessed By

Jay Schindel

**BORE-HOLE RECORD**

Run No.	BIT	FROM	TO	SIZE	WGT.	FROM	TO
One	9.875"	0.0	20.0	7.00"	0.0	0.0	20.0
Two	5.625"	20.0	640.0	2.875"	0.0	0.0	627.0

**CASING RECORD**

Run No.	BIT	FROM	TO	SIZE	WGT.	FROM	TO
One	9.875"	0.0	20.0	7.00"	0.0	0.0	20.0
Two	5.625"	20.0	640.0	2.875"	0.0	0.0	627.0

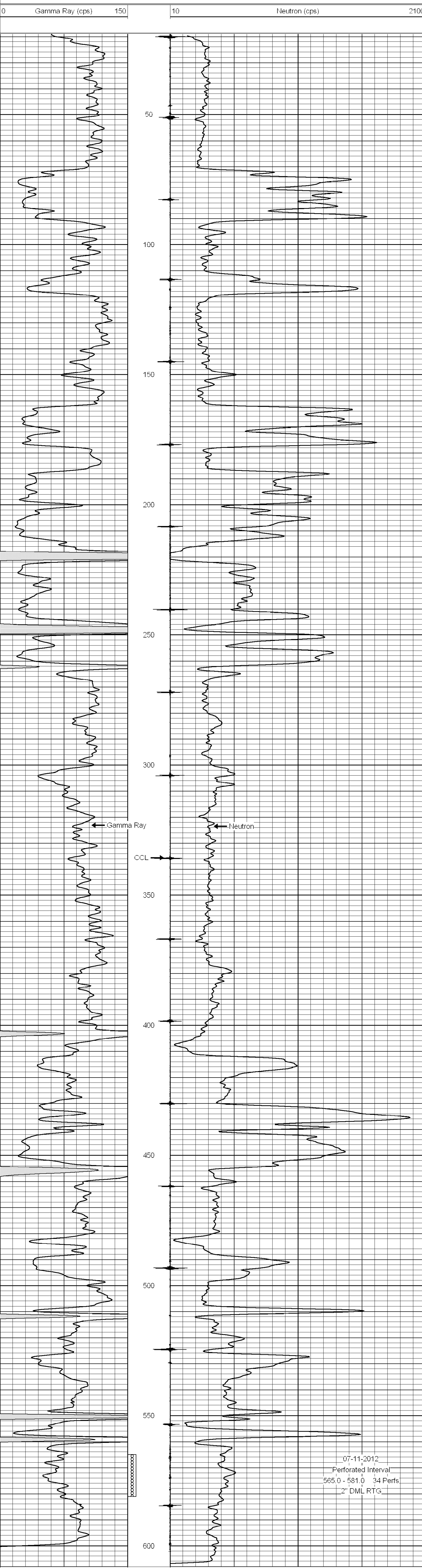
<<< Fold Here >>>

All interpretations are opinions based on inferences from electrical or other measurements and we cannot and do not guarantee the accuracy or correctness of any interpretation, and we shall not, except in the case of gross or willful negligence on our part, be liable or responsible for any loss, costs, damages, or expenses incurred or sustained by anyone resulting from any interpretation made by any of our officers, agents or employees. These interpretations are also subject to our general terms and conditions set out in our current Price Schedule.

Comments

Drilling Contractor :  
JTC Oil, Inc.

Database File: dreher10bsi.db  
 Dataset Pathname: pass1  
 Presentation Format: gr-n-ccl  
 Dataset Creation: Thu Jun 07 12:26:32 2012 by Log SCH 111116  
 Charted by: Depth in Feet scaled 1:240



07-11-2012  
 Perforated Interval  
 565.0 - 581.0 34 Perfs  
 2" DML RTG