



Sonic Cement
Bond Log

API No.

15-069-20053

Company Sunflower Energy, LLC.

Well Gineest # 1 OWWO

Field

County Gray

State Kansas

Location

1980' FNL & 1730' FWL

Other Services

Perforate

Sec: 30 Twp: 27S Rge: 29W

Elevation

Permanent Datum Ground Level Elevation 2754

Log Measured From Kelly Bushing 11 Ft. Above Perm. Datum

Drilling Measured From Kelly Bushing

K.B. 2765
D.F. 2763
G.L. 2754

Run Number

One

Date Survey

5/25/2012

Date Cementing

4/30/2012

Type Cementing Operation

Primary

Depth Driller

5200

Depth Logger

5144

Logged Interval

5142 to

Casing Driller

5.5 @ TD

Float Collar -- D.V. Tool

//// 3540 @

Squeeze Depth

////

Amount & Type Cement

////

Amount & Type Admix

////

Type Fluid In Hole

Water

Fluid Level

Full

Salinity PPM CL

////

Weight lb/gal -- Vis.

////

Approx. Logged Cement Top

2346

Calculated Cement Top

3637

Max. Hole Temperature

127

Tool No.

RBT 1-1

Spacing Recorded

3-5

Equipment -- Location

5 Pratt

Recorded By

D.Lear

Witnessed By

Clint Andrews

<<< Fold Here >>>

All interpretations are opinions based on inferences from electrical or other measurements and we cannot and do not guarantee the accuracy or correctness of any interpretation, and we shall not, except in the case of gross or willful negligence on our part, be liable or responsible for any loss, costs, damages, or expenses incurred or sustained by anyone resulting from any interpretation made by any of our officers, agents or employees. These interpretations are also subject to our general terms and conditions set out in our current Price Schedule.

Comments

Thank you for using Log-Tech, Inc.
(620) 672-8300

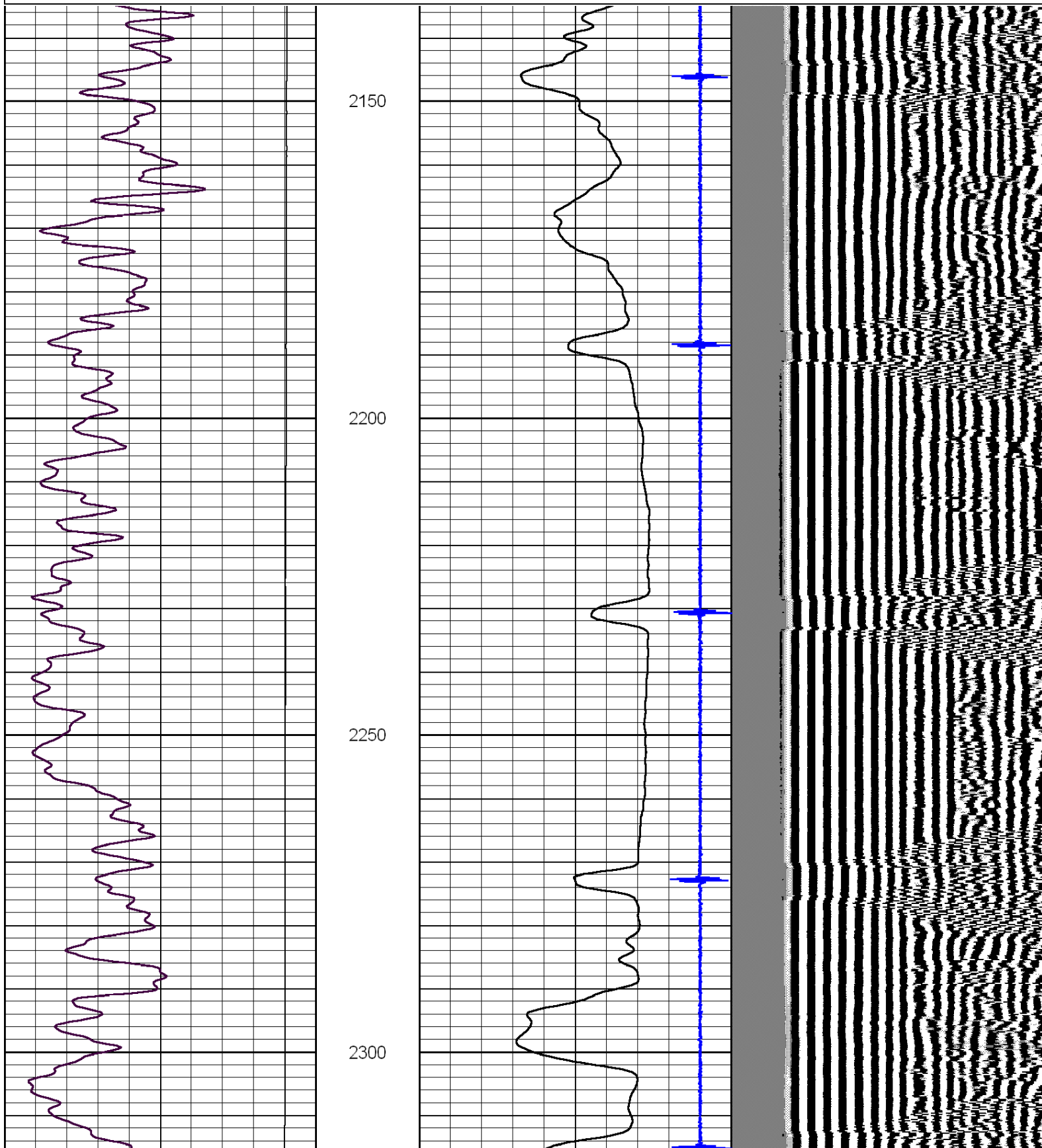
Copeland, KS
E to 7 RD.,
7.1 N
E Into

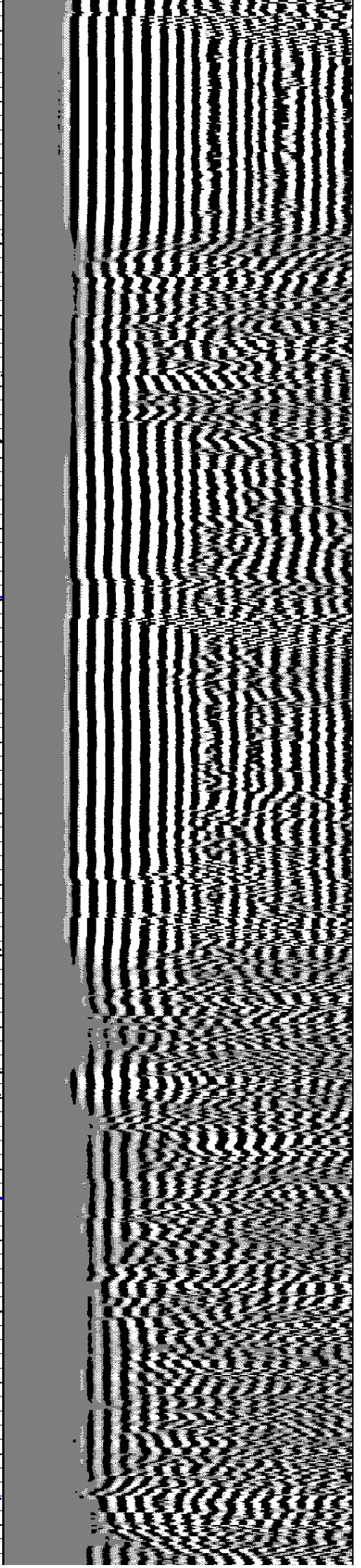
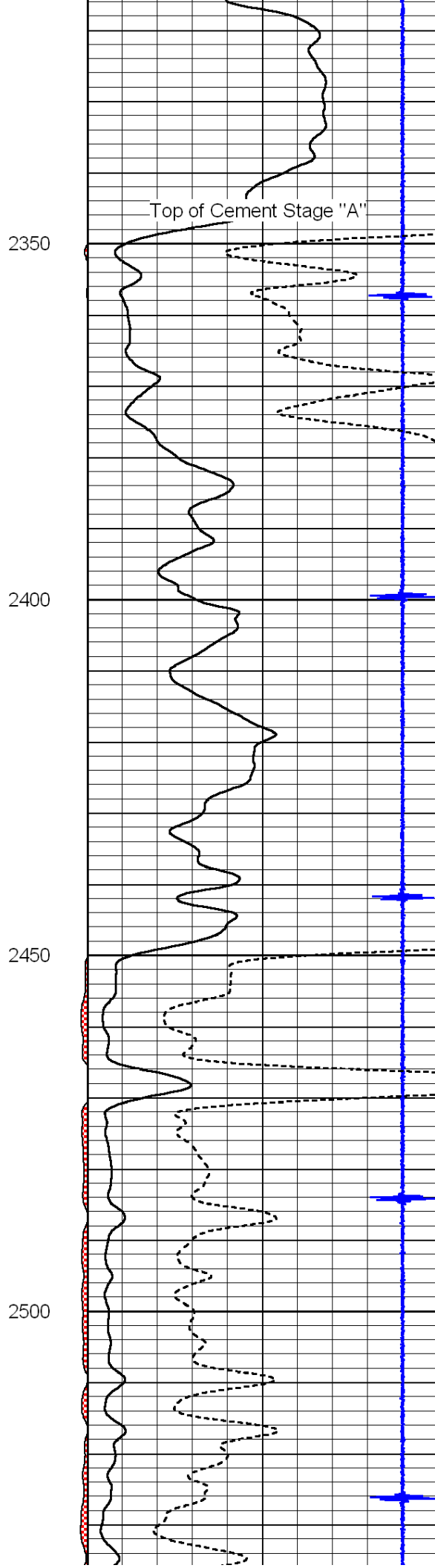
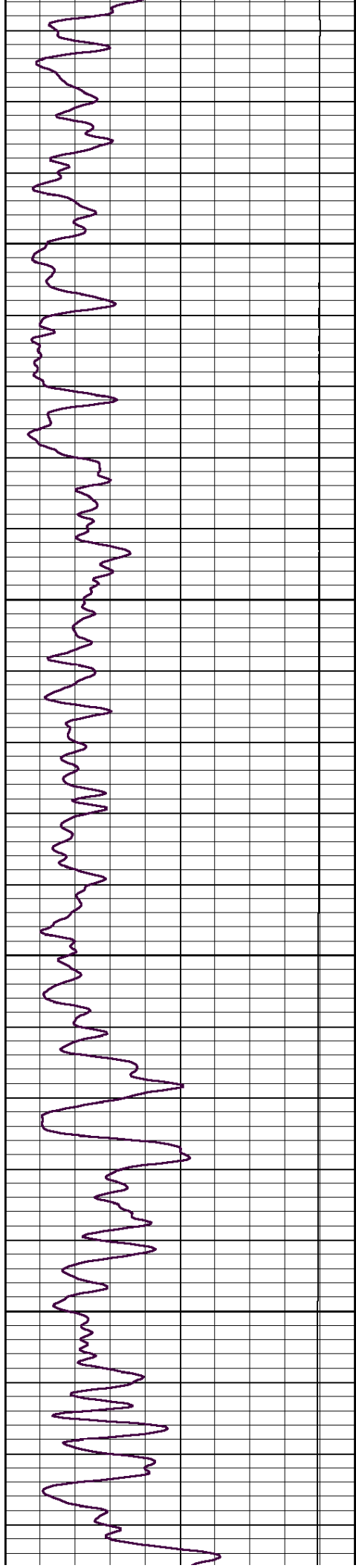


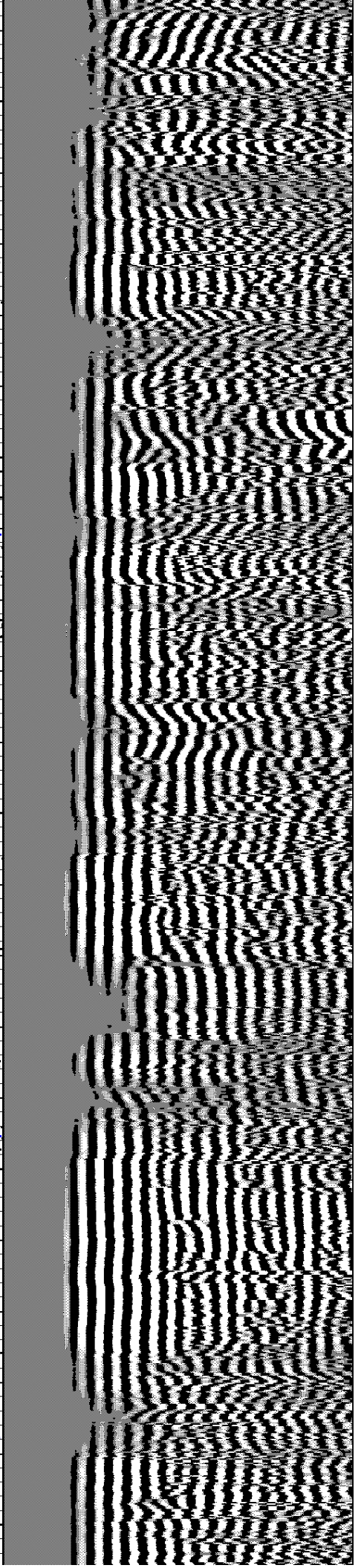
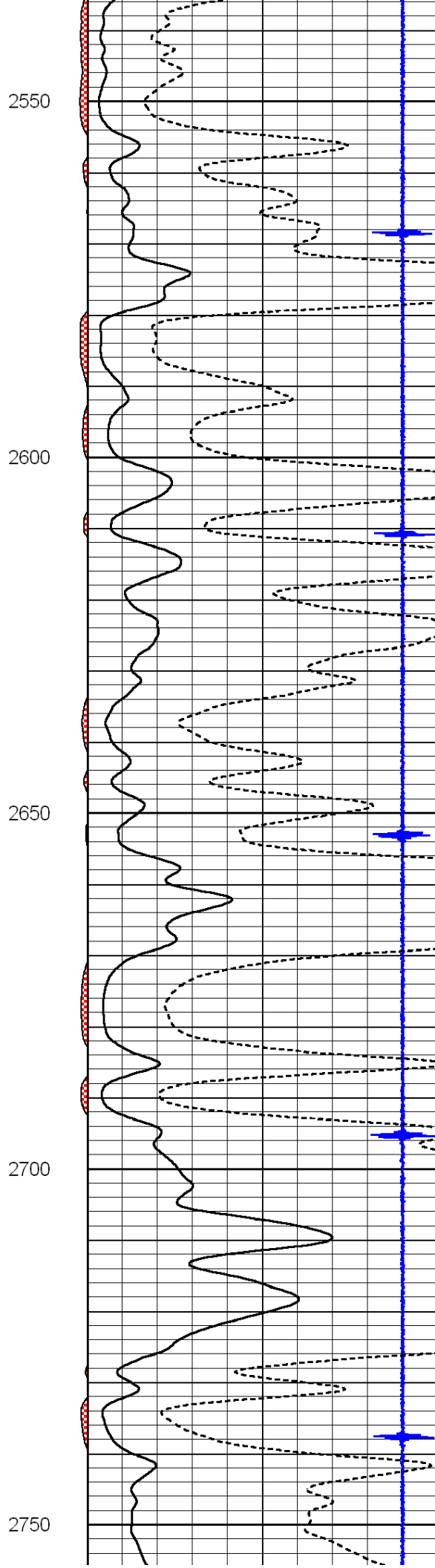
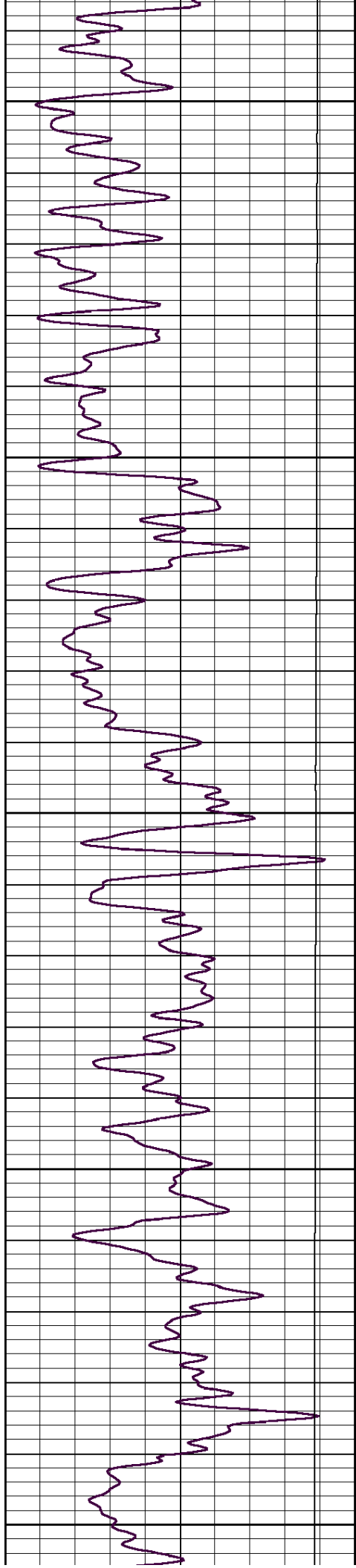
Main Pass

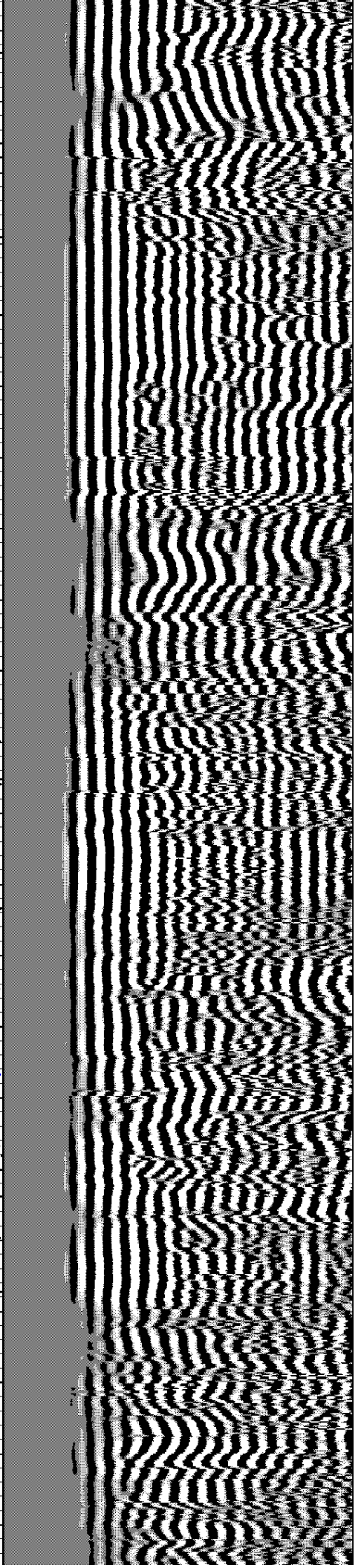
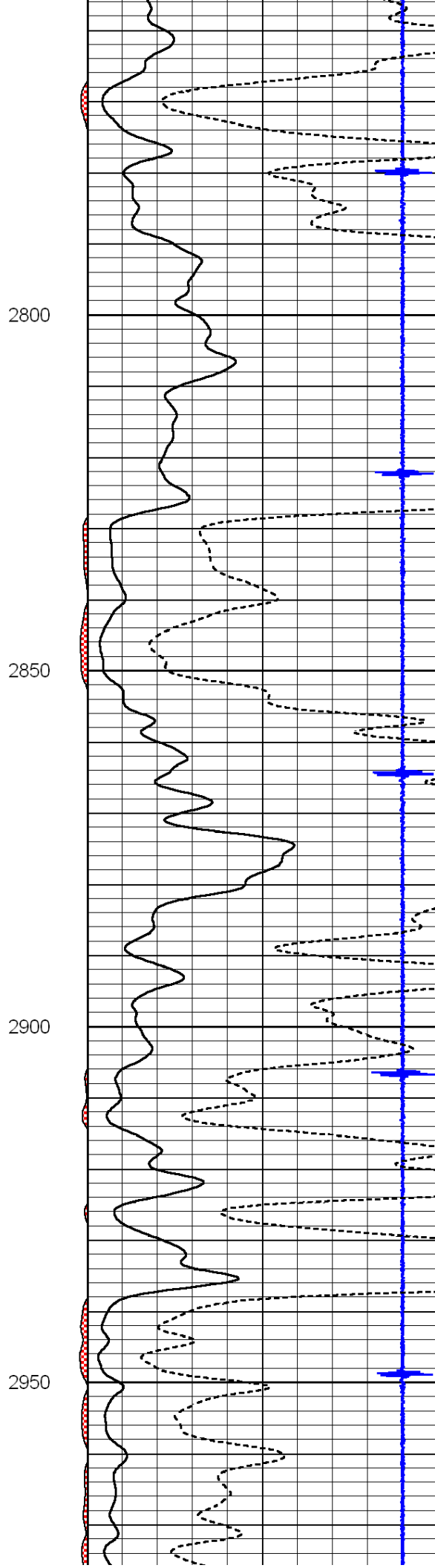
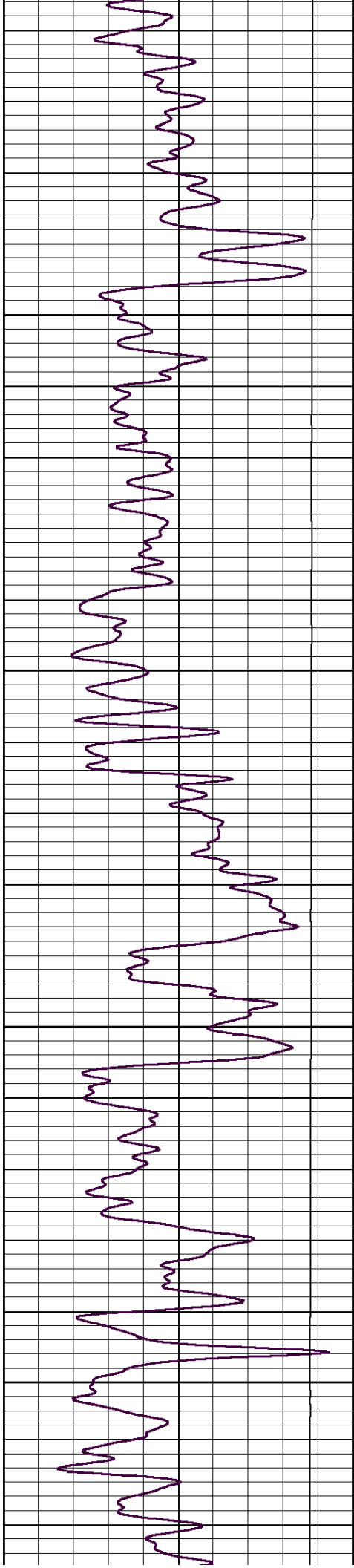
Database File: sunflower_ginest_1owwo.db
 Dataset Pathname: grcbl/pass3
 Presentation Format: cbldr
 Dataset Creation: Fri May 25 09:41:02 2012 by Log SCH 110630
 Charted by: Depth in Feet scaled 1:240

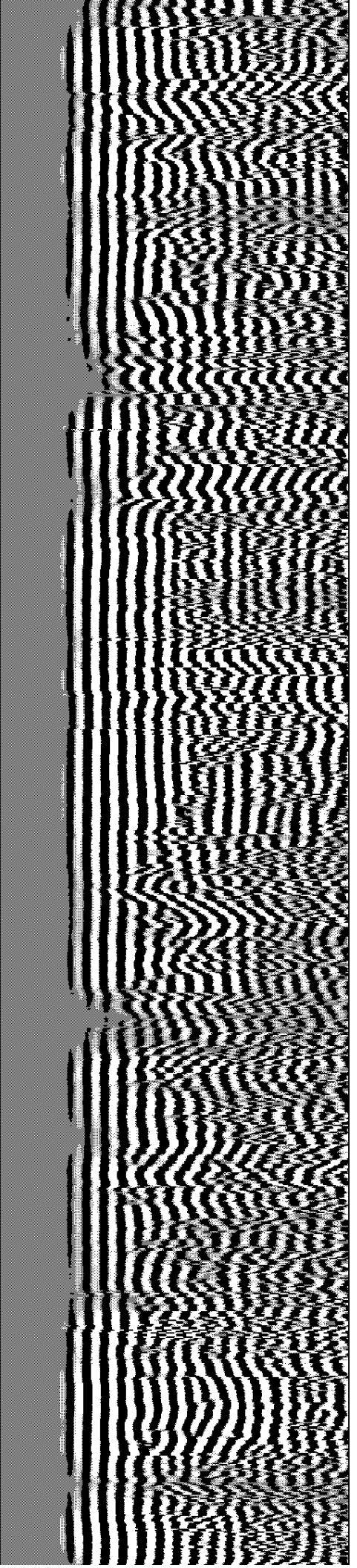
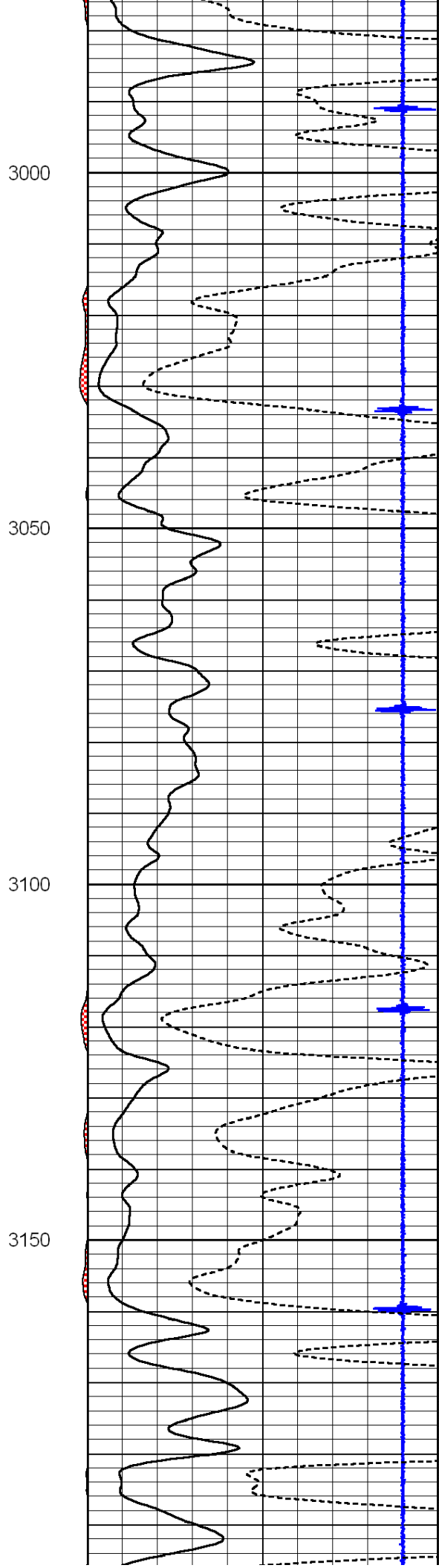
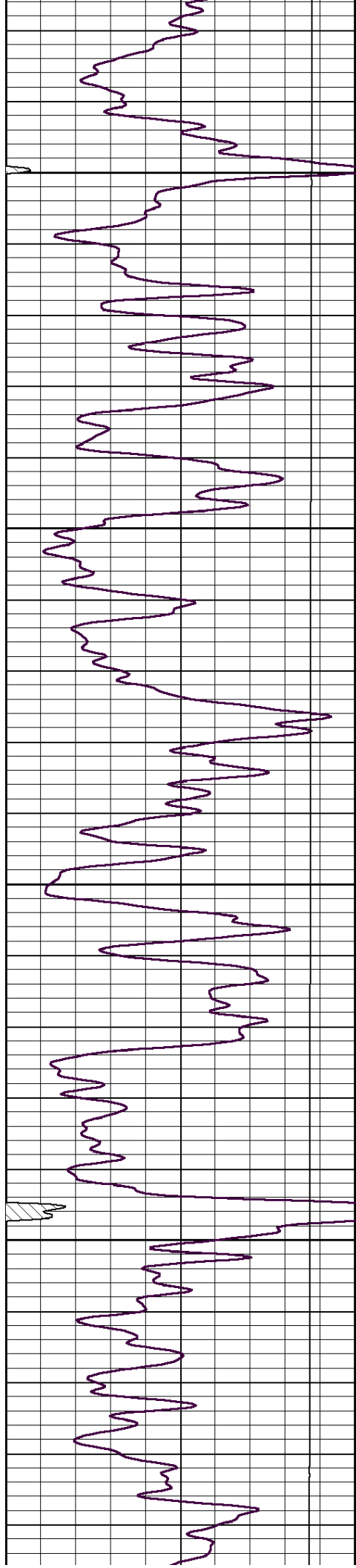
0	Gamma Ray	150	amp3ft	7	Casing Collars	-0.8	200	wvf5ft	1200
			(mV)	0	Amplified Amplitude (mV)	100			
			-100 10	0	Pipe Amplitude (mV)	20			

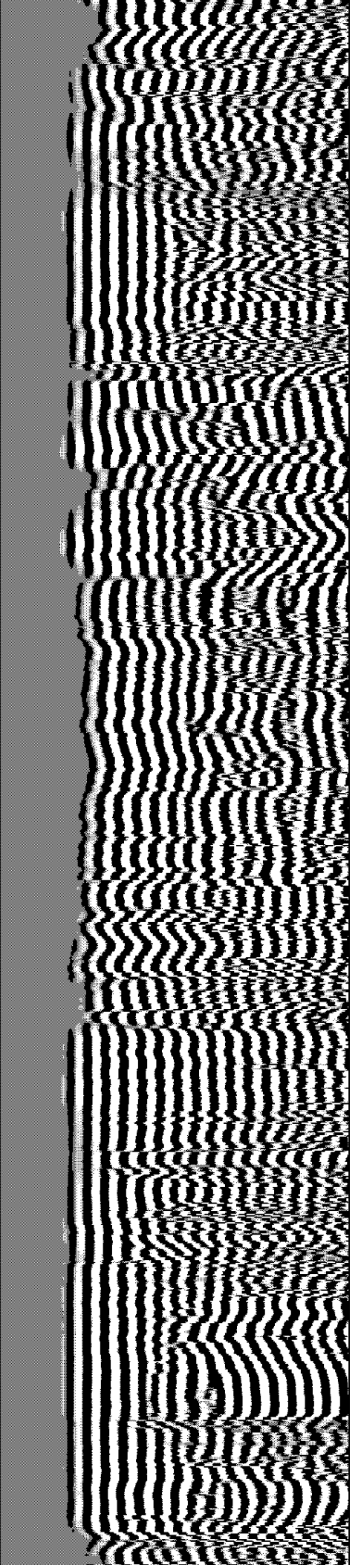
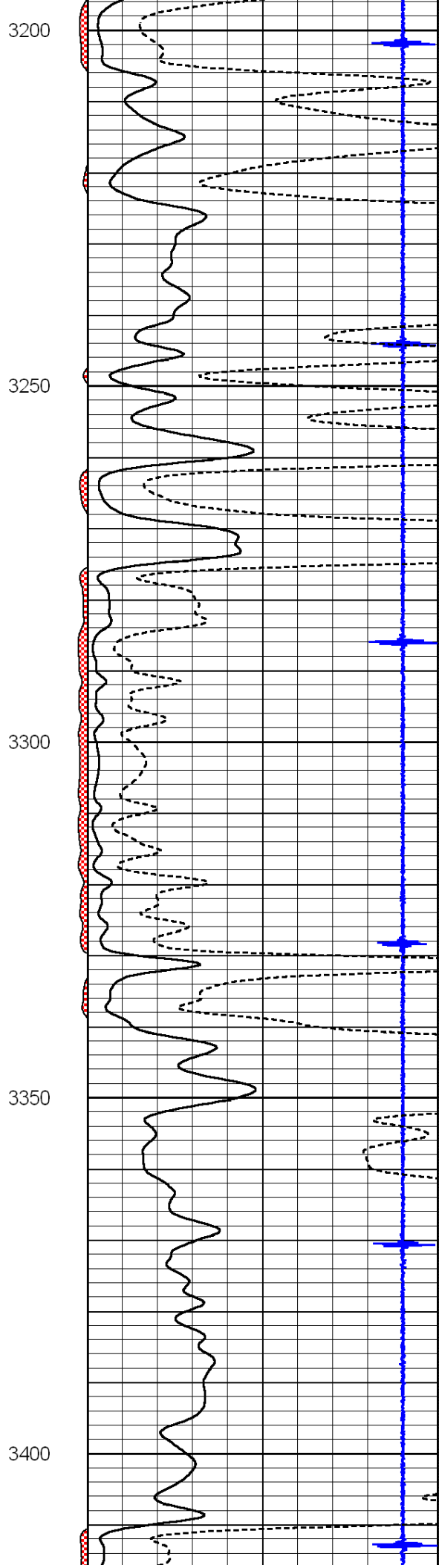
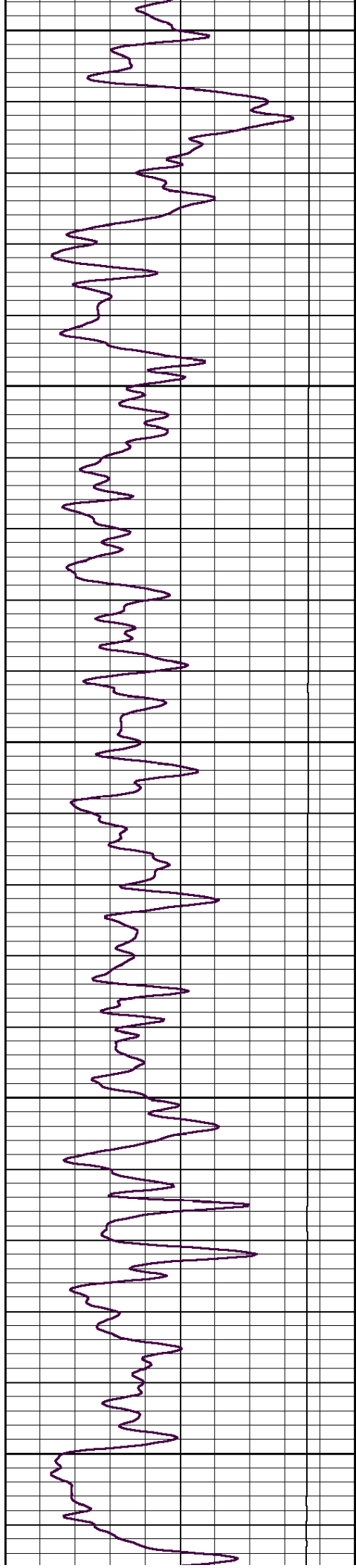


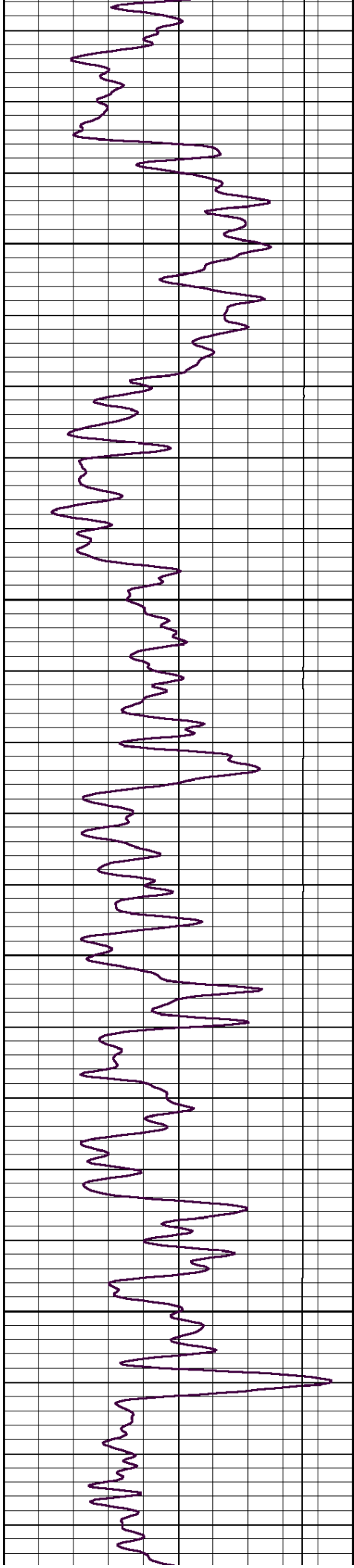










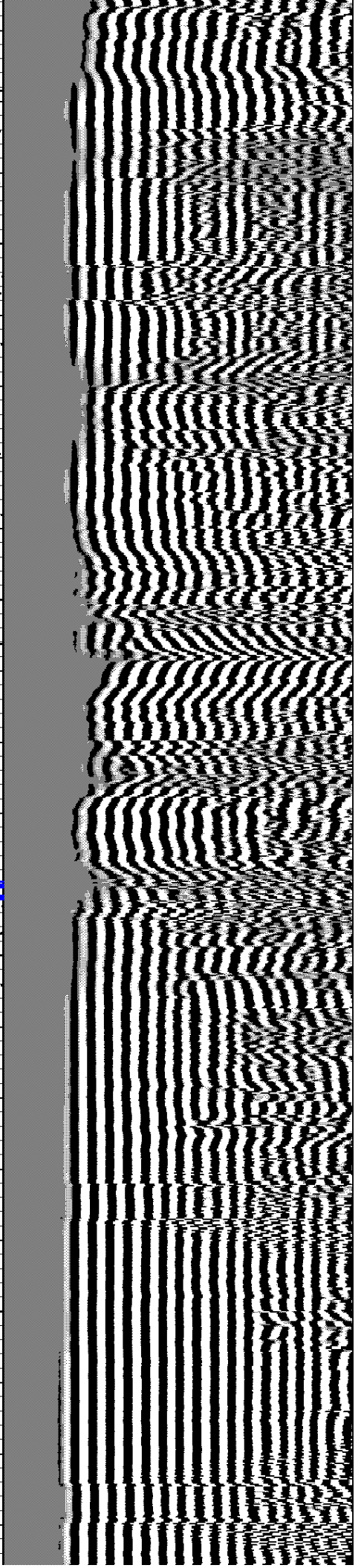
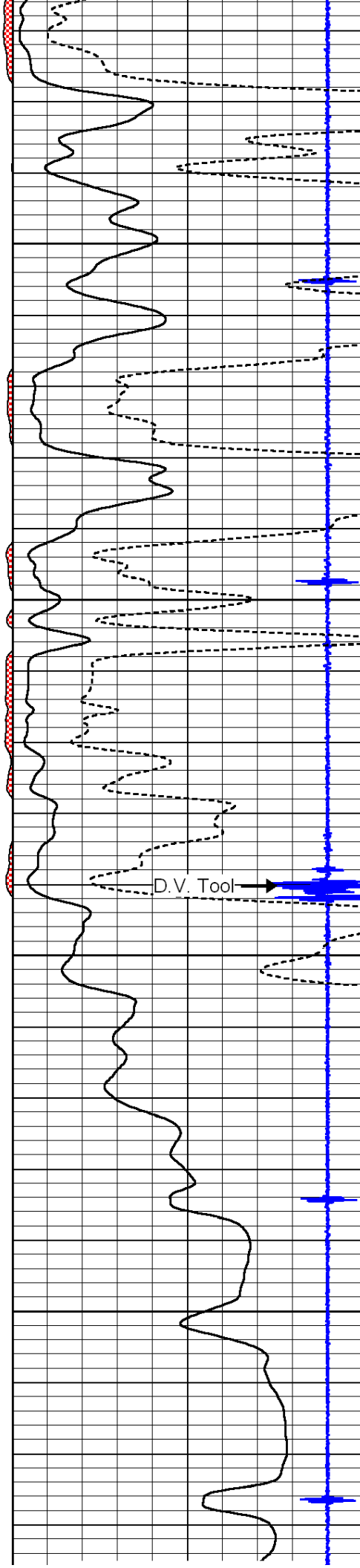


3450

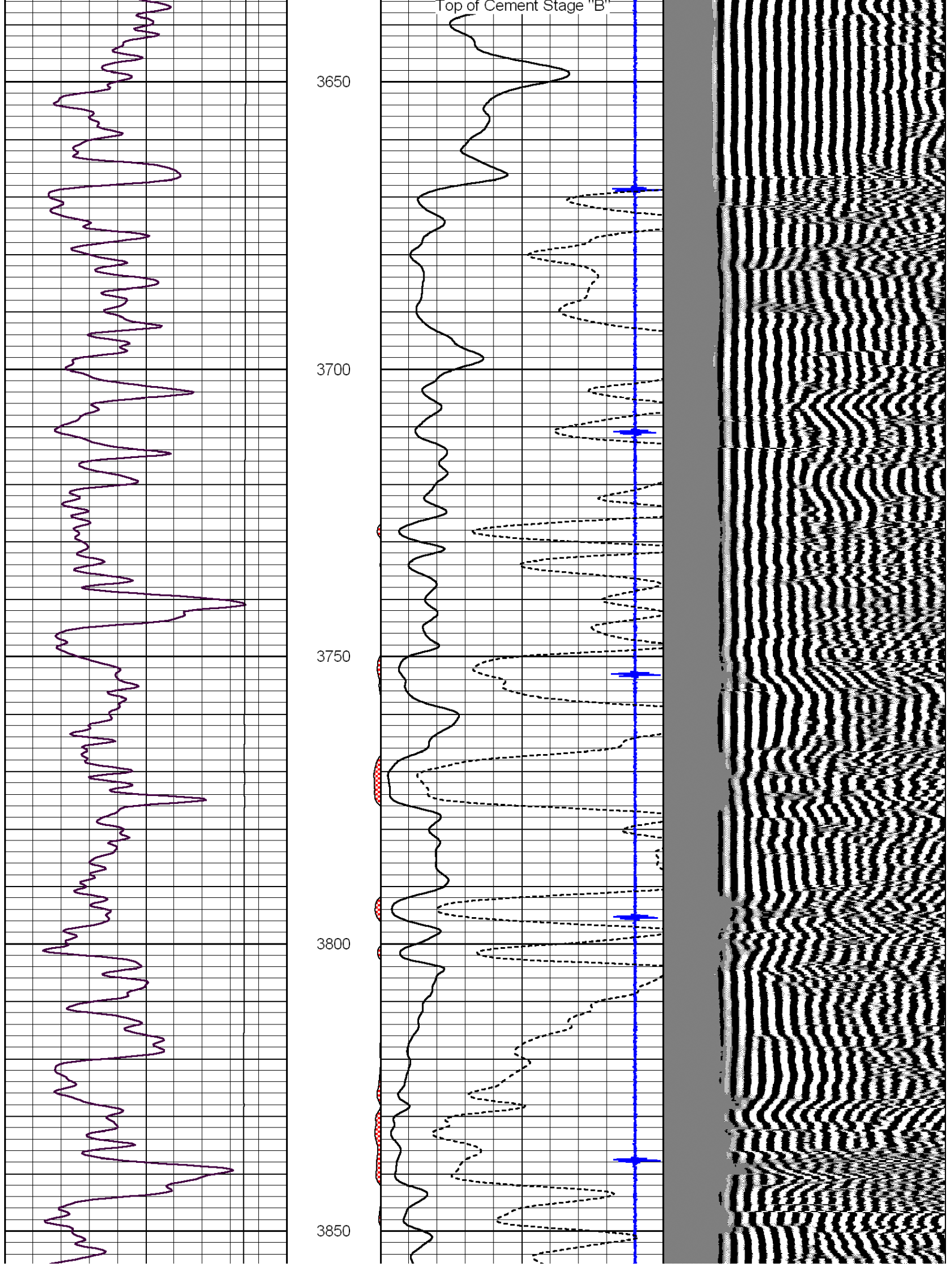
3500

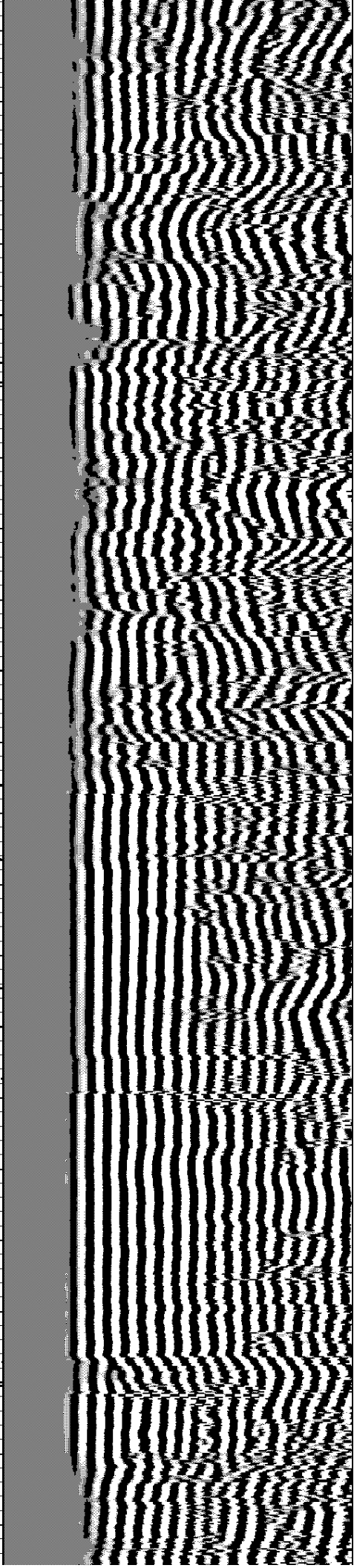
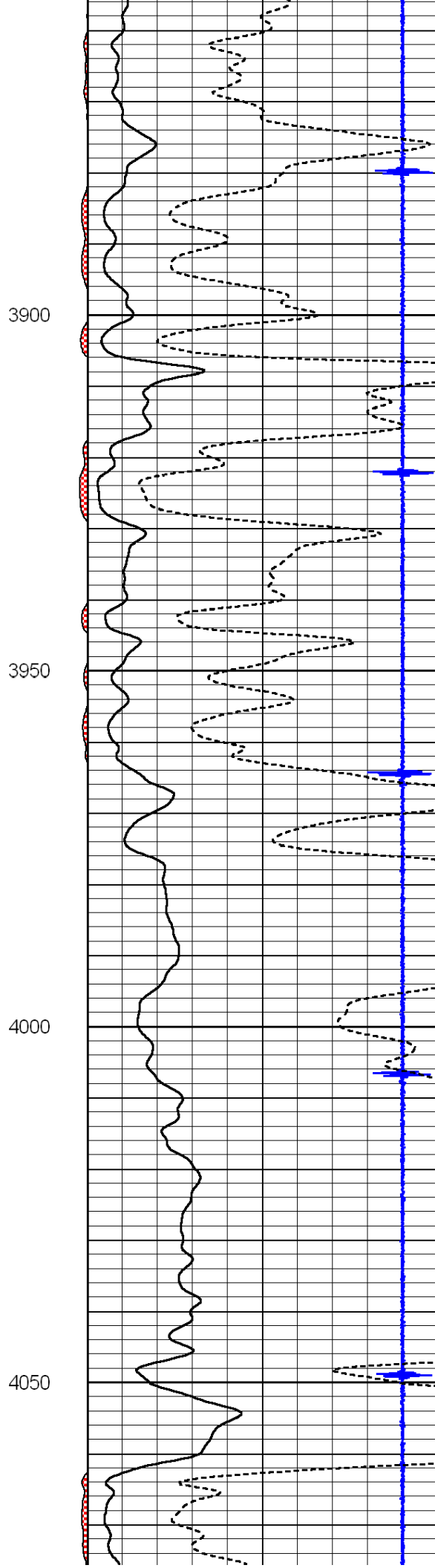
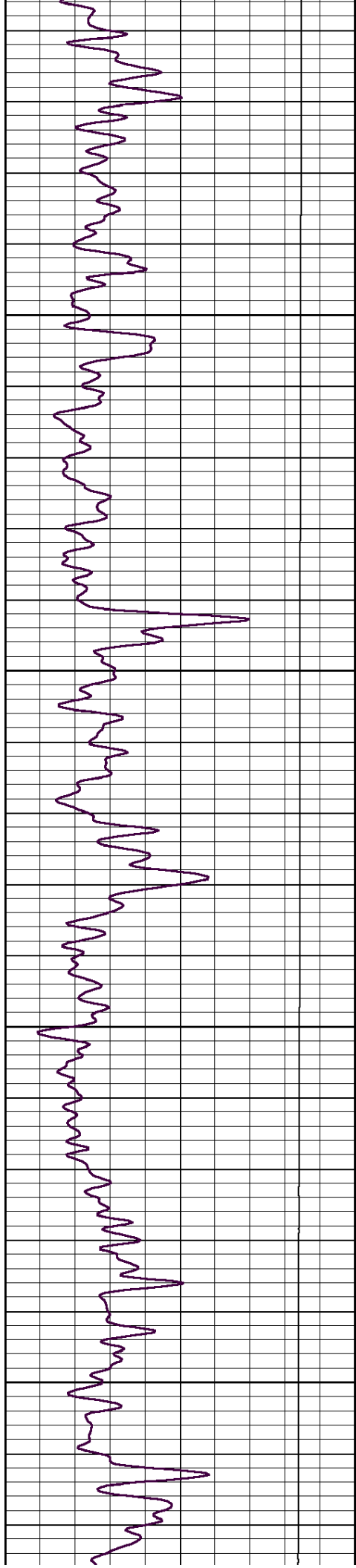
3550

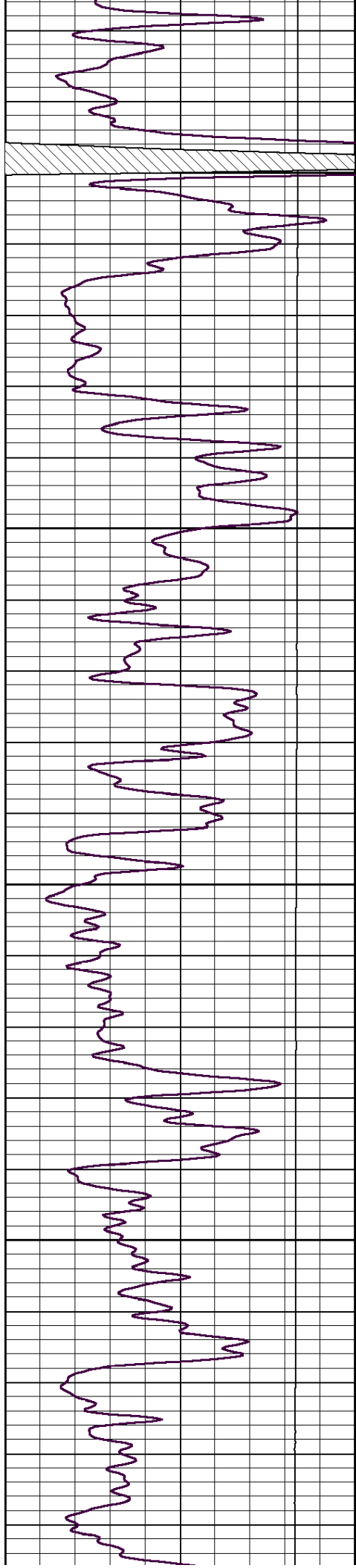
3600



Top of Cement Stage "B"





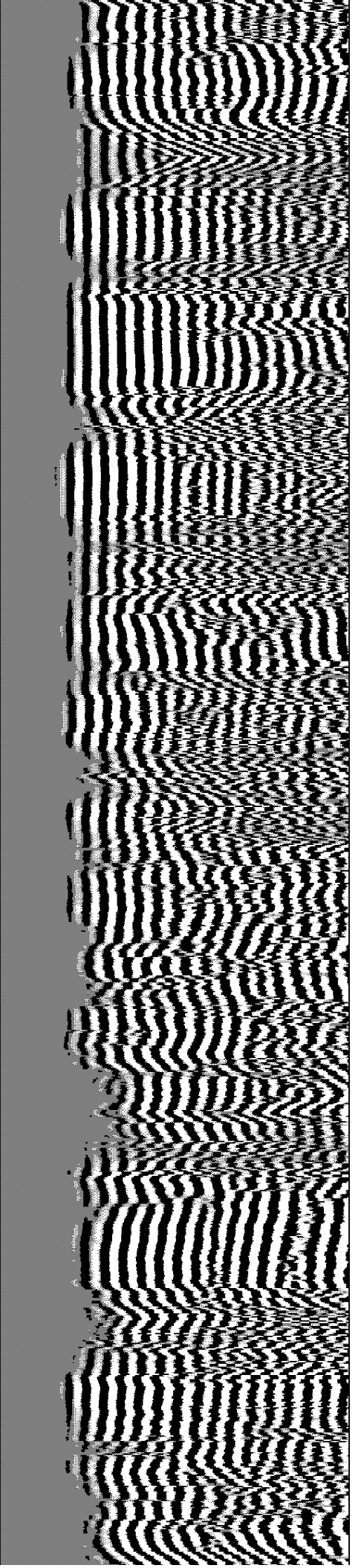
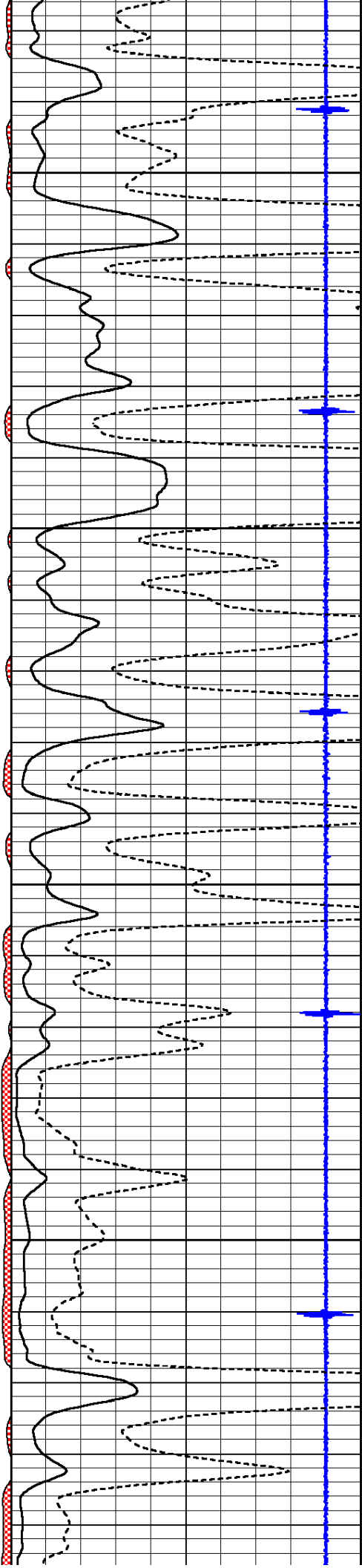


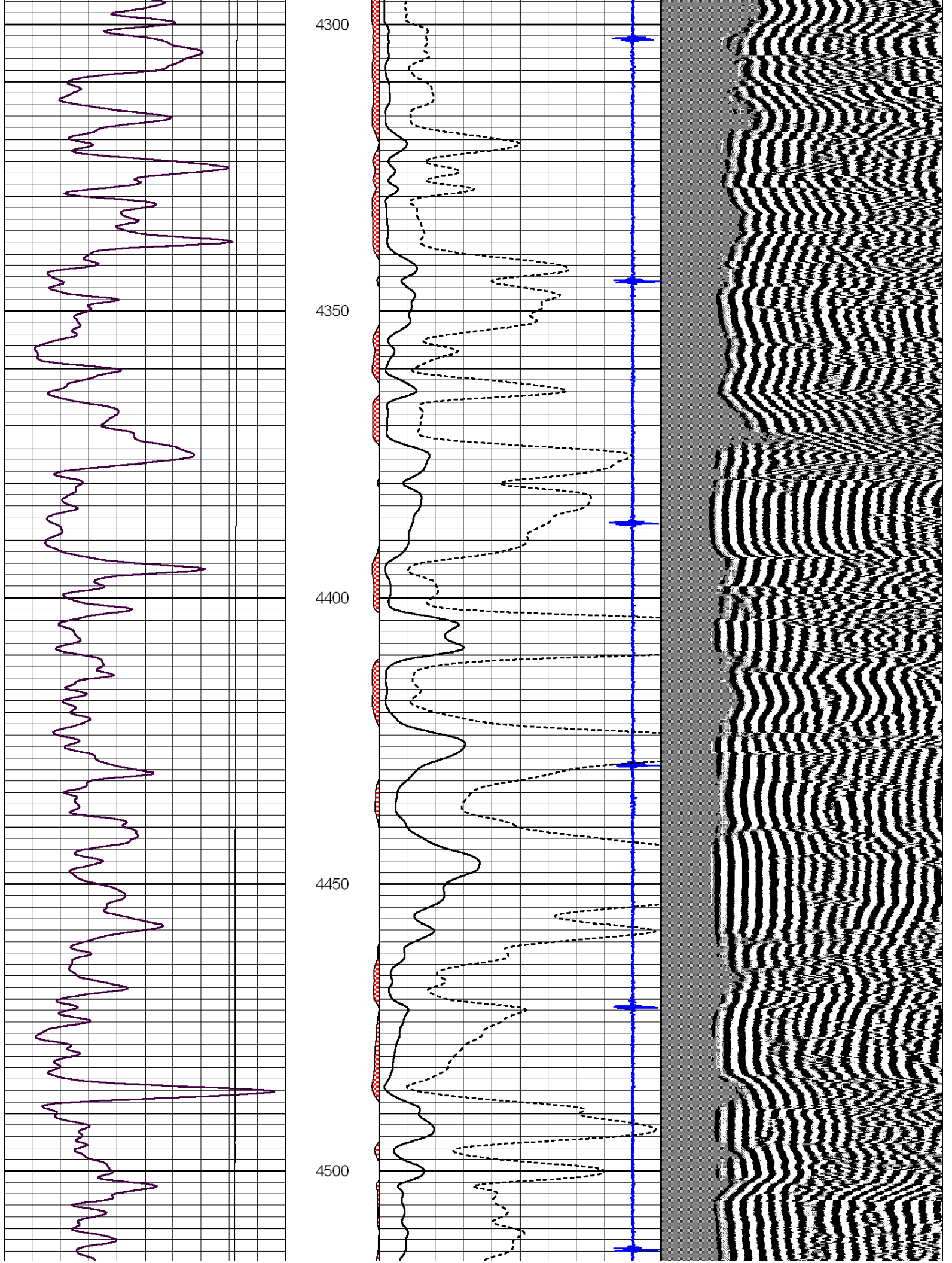
4100

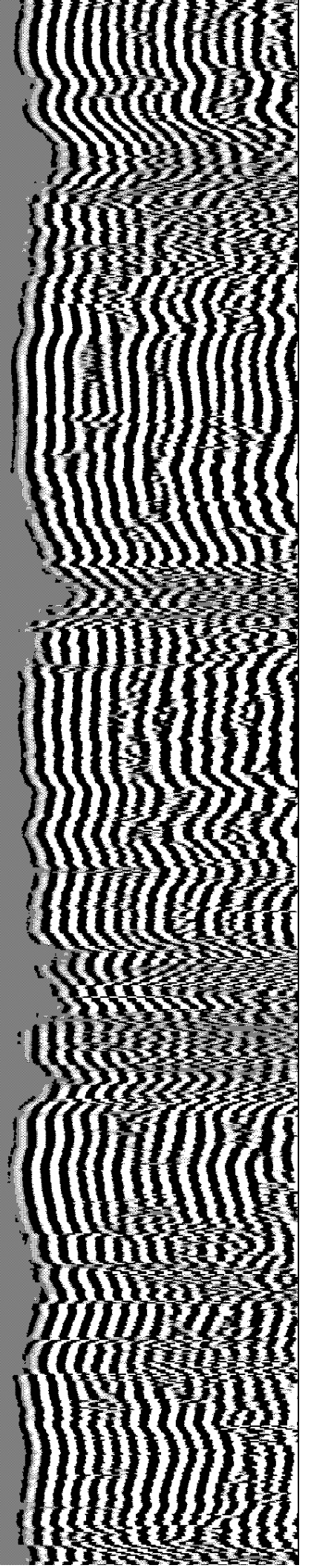
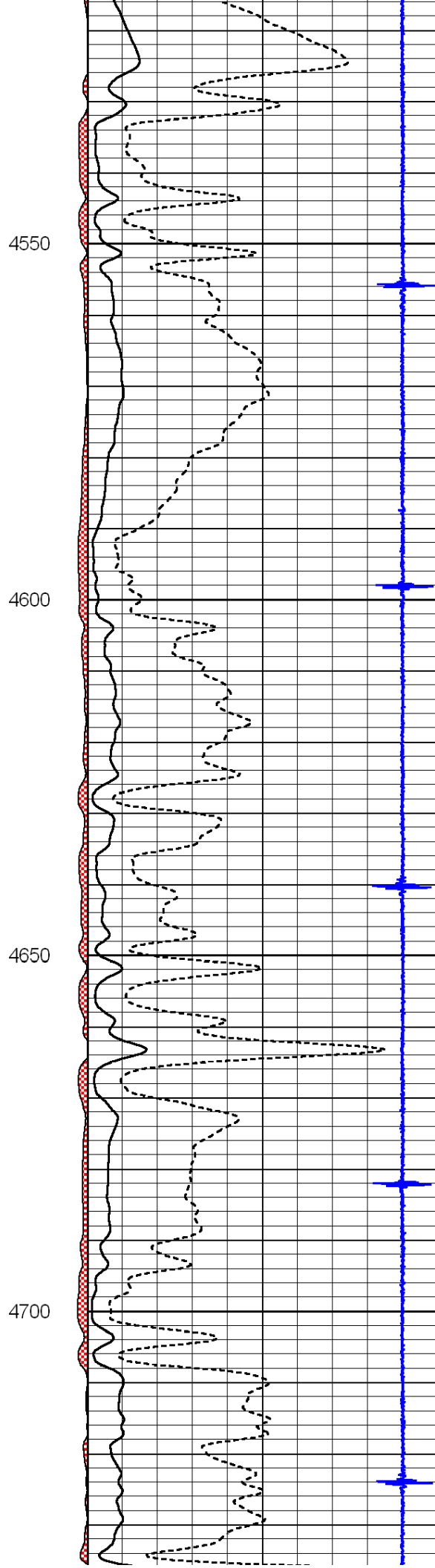
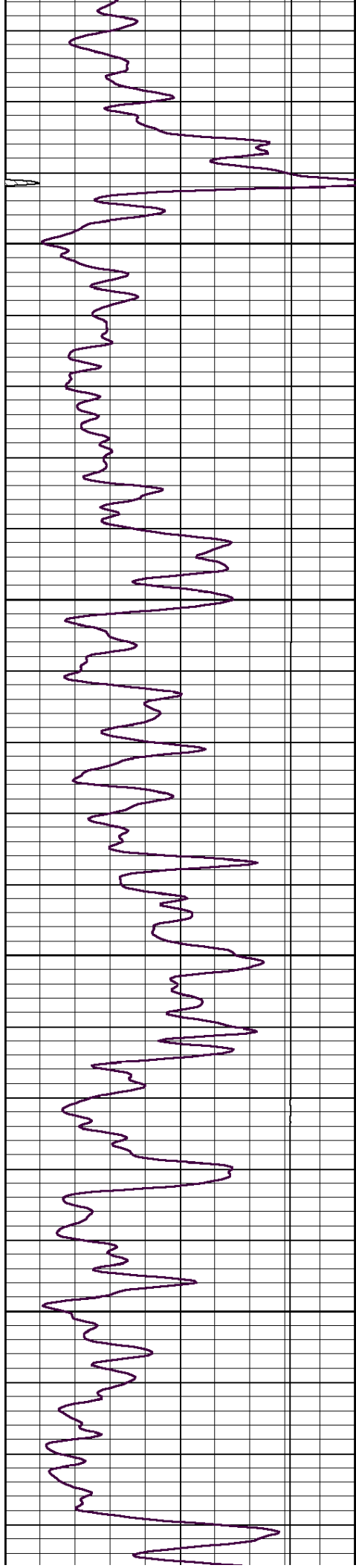
4150

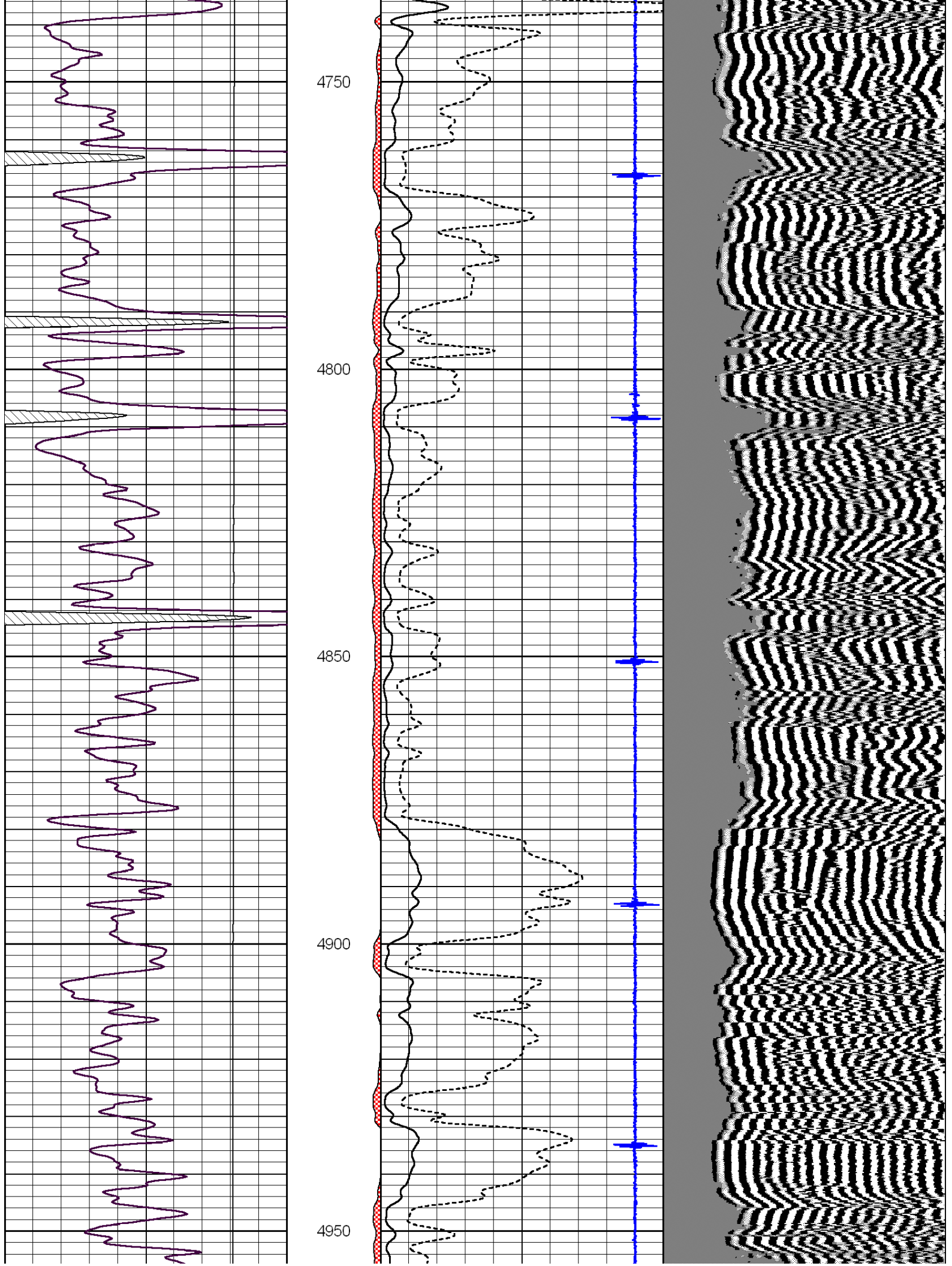
4200

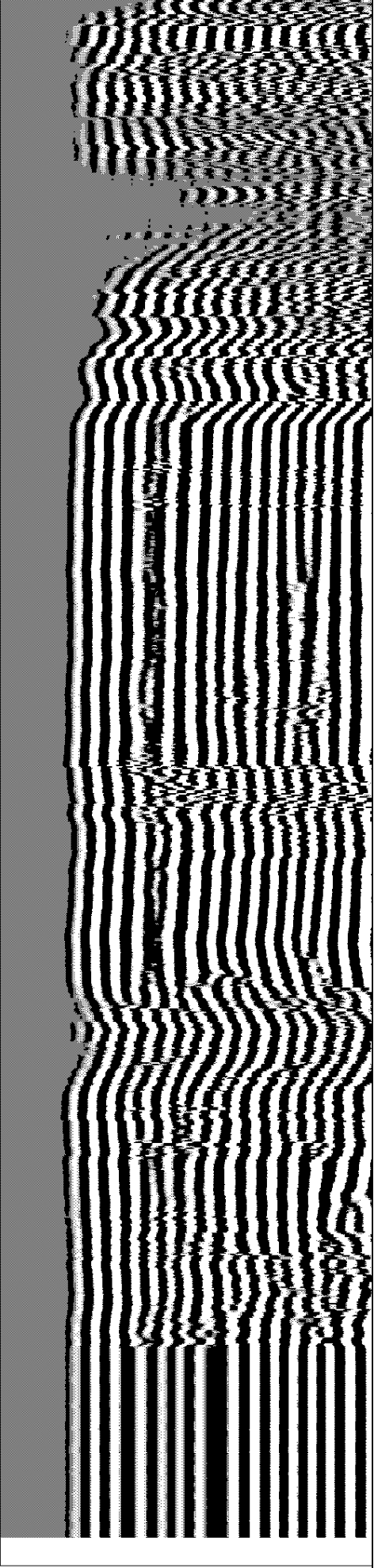
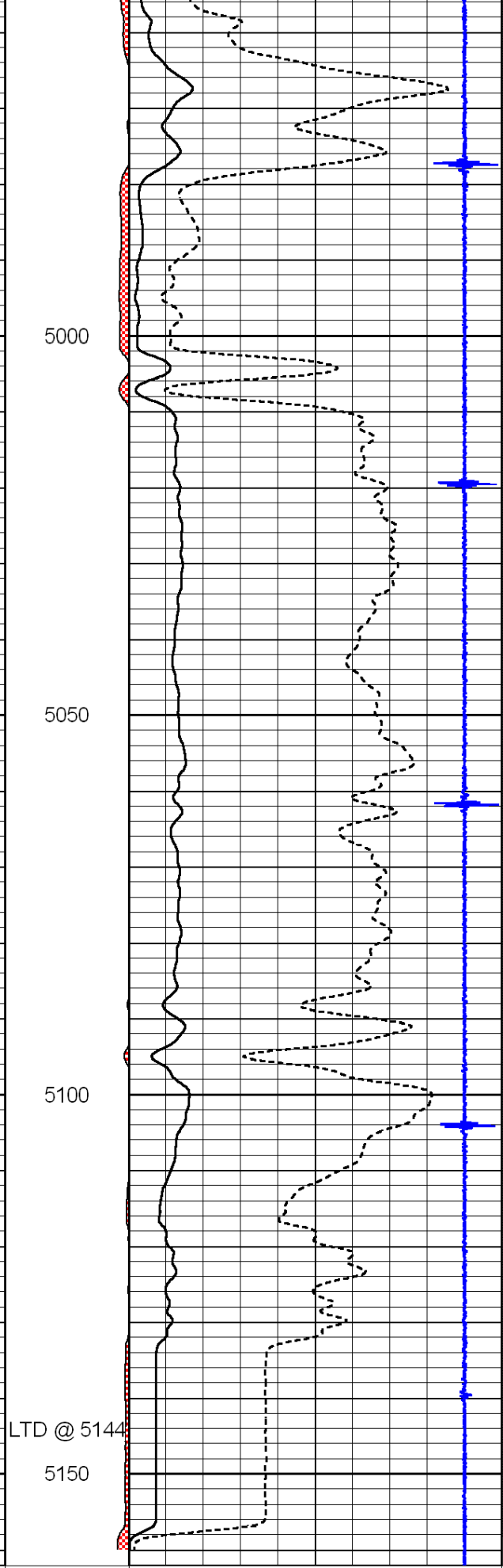
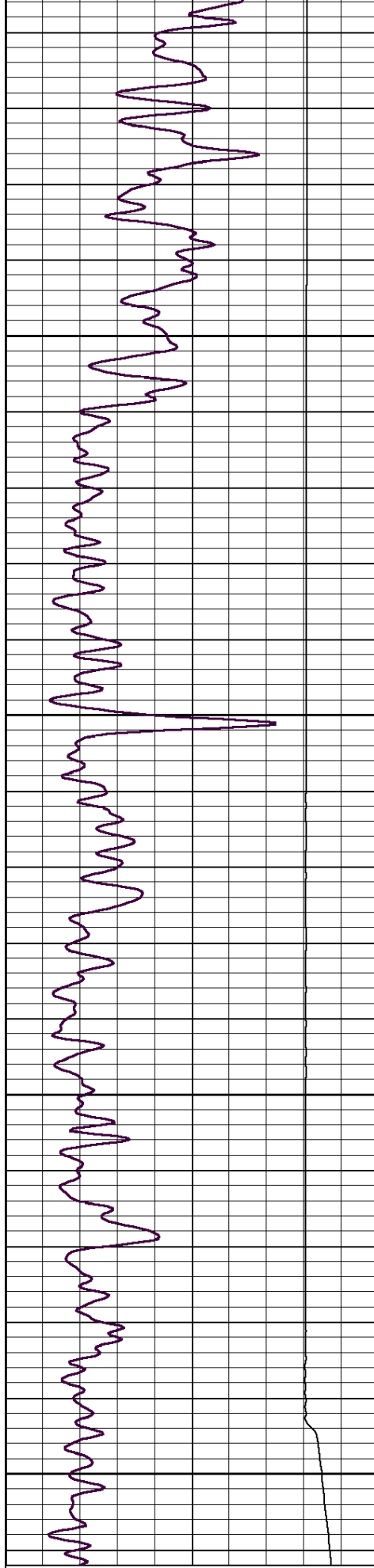
4250











0 Gamma Ray 150

7 Casing Collars -0.8

200 wvf5ft 1200

amp3ft (mV) 0 Amplified Amplitude (mV) 100

-100 10 0 Pipe Amplitude (mV) 20

LTD @ 5144

5150

5000

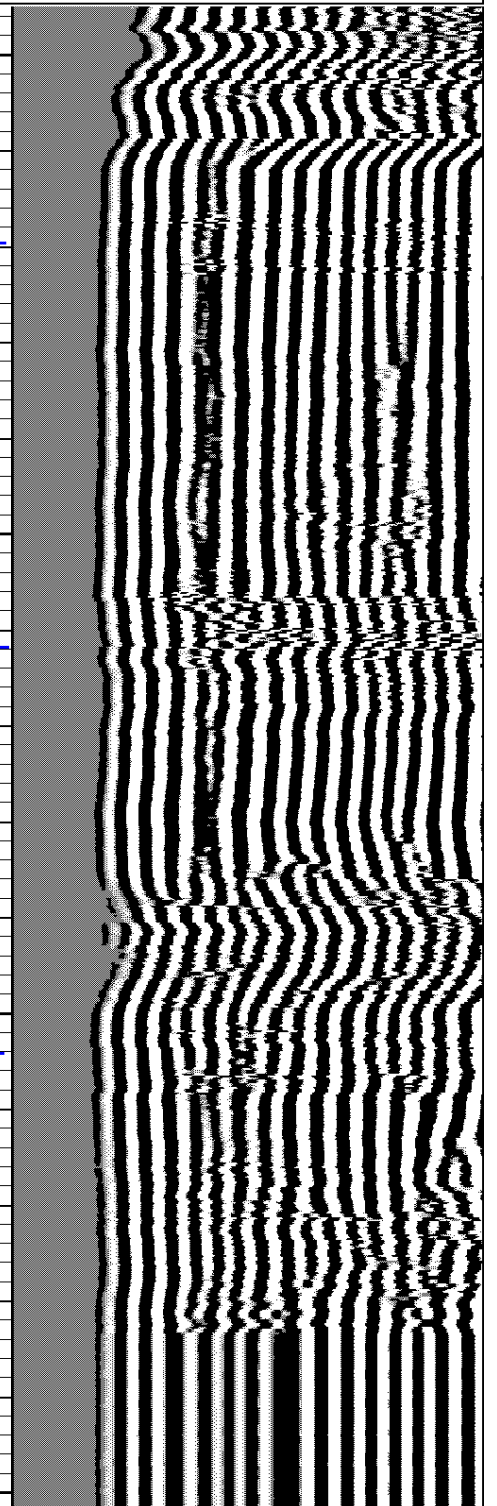
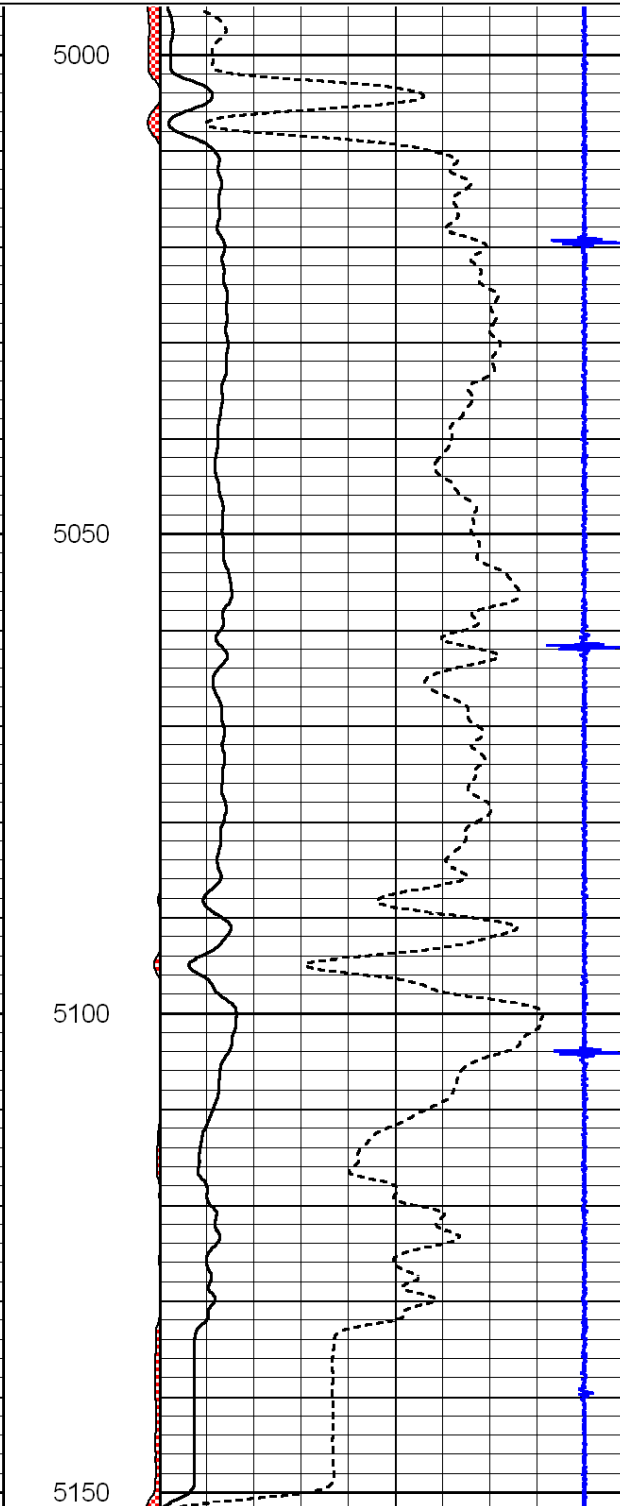
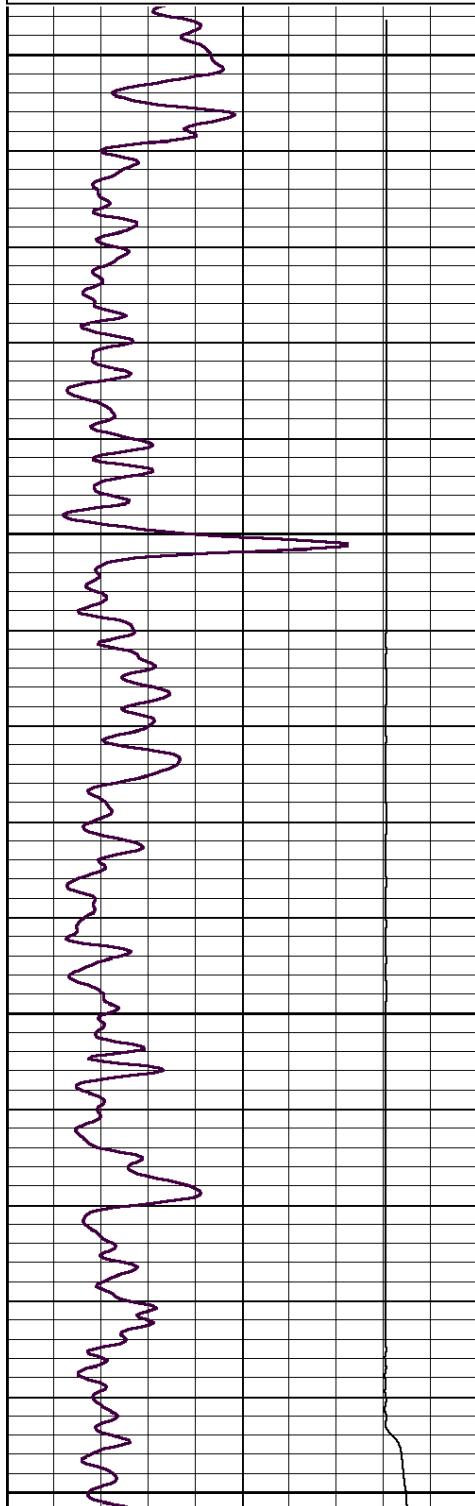
5050

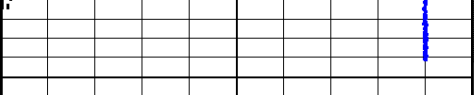
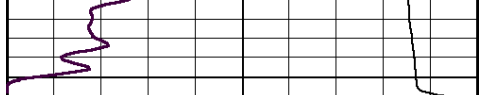
5100

Repeat Section

Database File: sunflower_ginest_1owwo.db
 Dataset Pathname: grcbl/pass3.1
 Presentation Format: cblcr
 Dataset Creation: Fri May 25 10:40:21 2012 by Calc SCH 110630
 Charted by: Depth in Feet scaled 1:240

0	Gamma Ray	150	amp3ft	7	Casing Collars	-0.8	200	wvf5ft	1200
			(mV)	0	Amplified Amplitude (mV)	100			
			-100	10	Pipe Amplitude (mV)	20			





0	Gamma Ray	150	amp3ft	7	Casing Collars	-0.8	200	wvf5ft	1200
			(mV)	0	Amplified Amplitude (mV)	100			
			-100 10	0	Pipe Amplitude (mV)	20			