



SUPERIOR
Hays,
Kansas

MICRO
LOG

Company ETERNITY EXPLORATION, LLC.
Well BI PORTER #1-31
Field
County GOVE State KANSAS

Company ETERNITY EXPLORATION, LLC.
Well BI PORTER #1-31
Field
County GOVE
State KANSAS

Location: API #: 15-063-21985-0000
359' FNL & 1339' FEL
SE - NE - NW - NE
SEC 31 TWP 14S RGE 30W
Permanent Datum GROUND LEVEL Elevation 2704
Log Measured From KELLY BUSHING 5' A.G.L.
Drilling Measured From KELLY BUSHING

Other Services
CDL/CNL
DIL
Elevation
K.B. 2709
D.F. 2707
G.L. 2704

Date	4-26-12		
Run Number	TWO		
Depth Driller	4465		
Depth Logger	4466		
Bottom Logged Interval	4464		
Top Log Interval	3500		
Casing Driller	208'		
Casing Logger	206'		
Bit Size	7.875		
Type Fluid in Hole	CHEMICAL MUD		
Density / Viscosity	9.3 / 53	CHLORIDES 2.400	
pH / Fluid Loss	10.0 / 8.8		
Source of Sample	FLOWLINE		
Rim @ Meas. Temp	0.95 @ 97F		
Rmf @ Meas. Temp	0.71 @ 97F		
Rmc @ Meas. Temp	1.14 @ 97F		
Source of Rmf / Rmc	MEASURED		
Rim @ BHT	0.77 @ 120F		
Time Circulation Stopped	2 HOURS		
Time Logger on Bottom			
Maximum Recorded Temperature	120F		
Equipment Number	860		
Location	HAYS, KS.		
Recorded By	JEFF GRONEWEG		
Witnessed By	SCOTT ALBERG	CARLO UGOLINI	

<<< Fold Here >>>

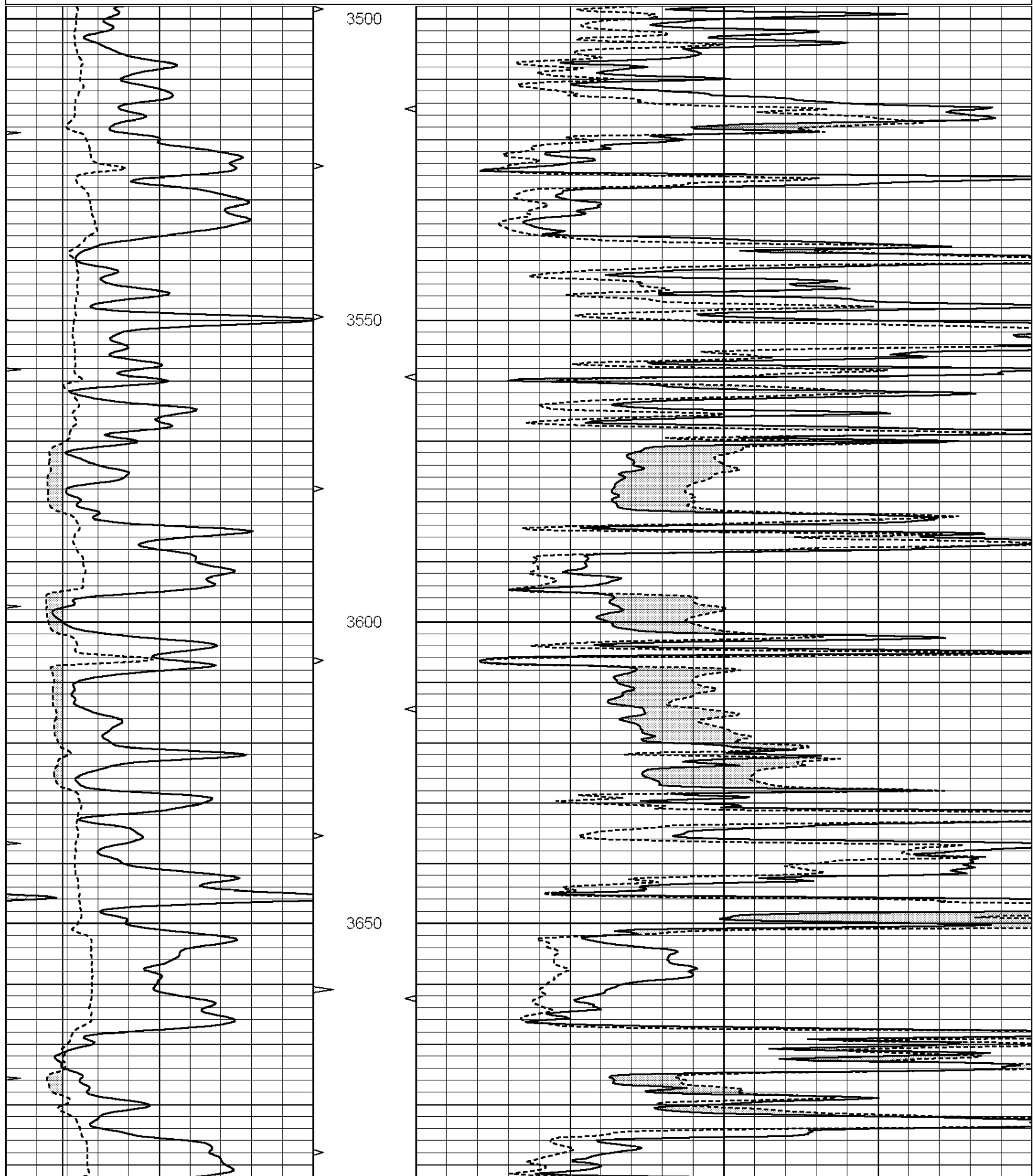
All interpretations are opinions based on inferences from electrical or other measurements and we cannot and do not guarantee the accuracy or correctness of any interpretation, and we shall not, except in the case of gross or willful negligence on our part, be liable or responsible for any loss, costs, damages, or expenses incurred or sustained by anyone resulting from any interpretation made by any of our officers, agents or employees. These interpretations are also subject to our general terms and conditions set out in our current Price Schedule.

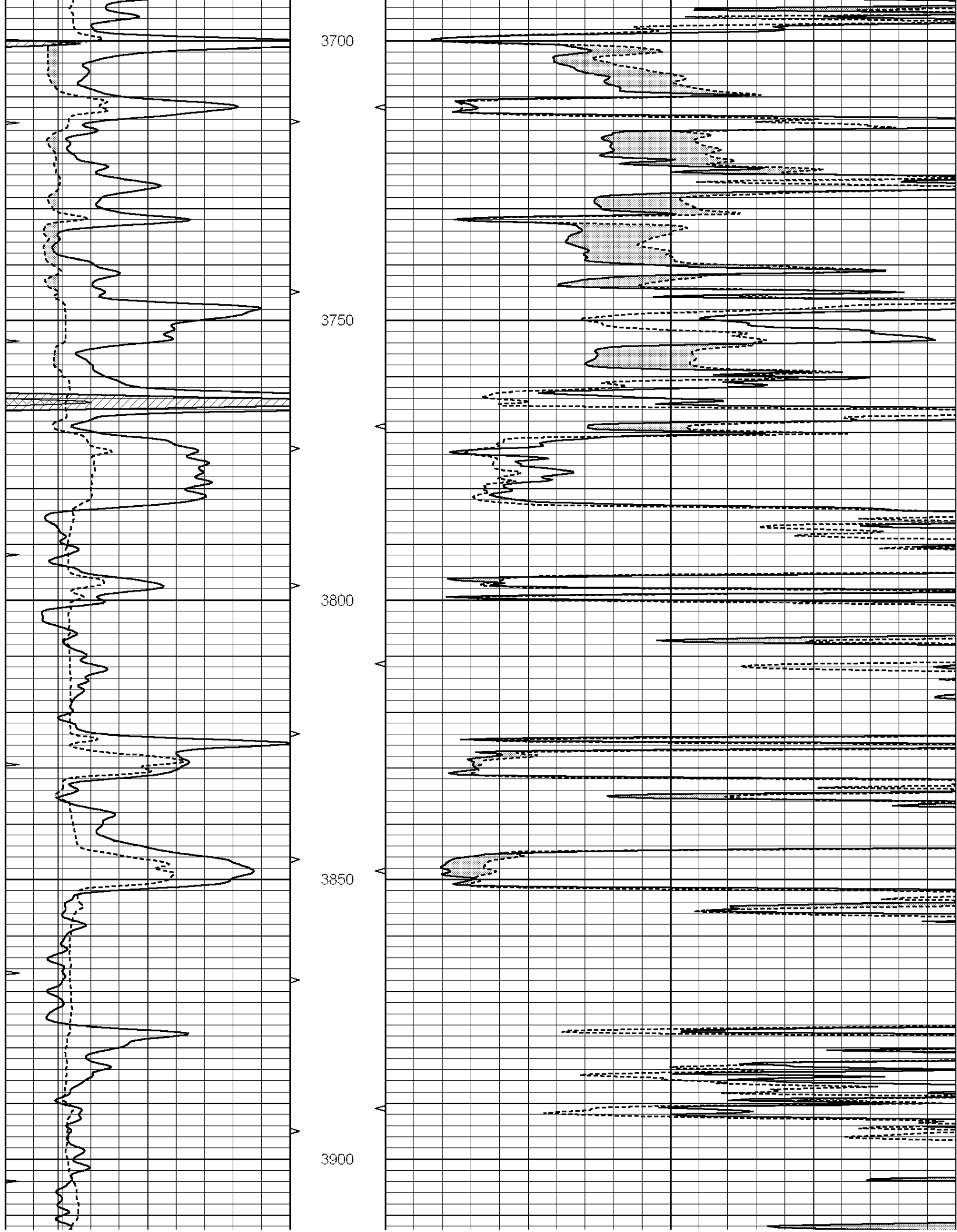
Comments

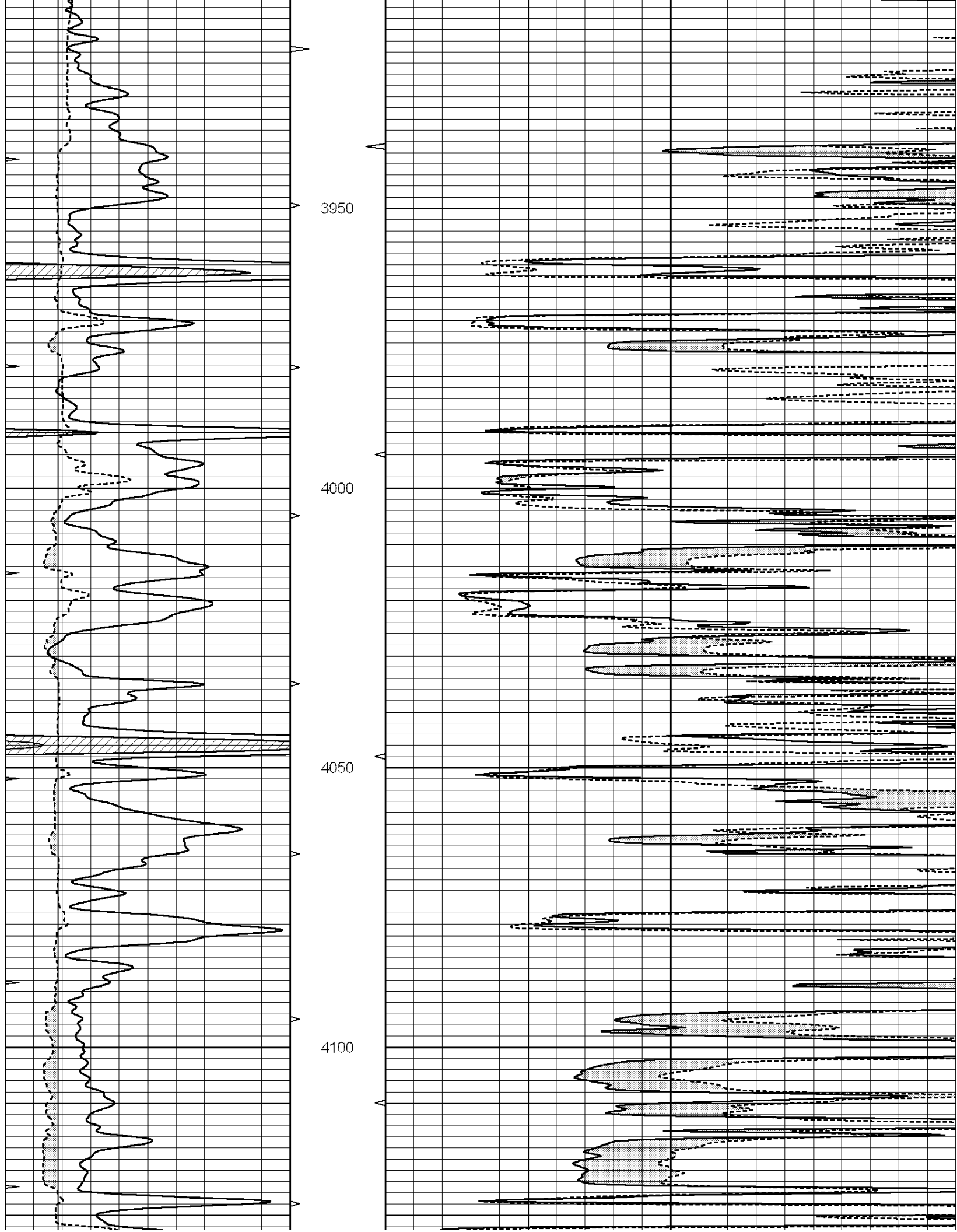
SUPERIOR WELL SERVICES
 785-628-6395
 THANK YOU FOR YOUR BUSINESS
 DIRECTIONS: GOVE, KS - 10 MILES SOUTH TO RD I
 10 MILES WEST - 1 MILE SOUTH - WEST INTO

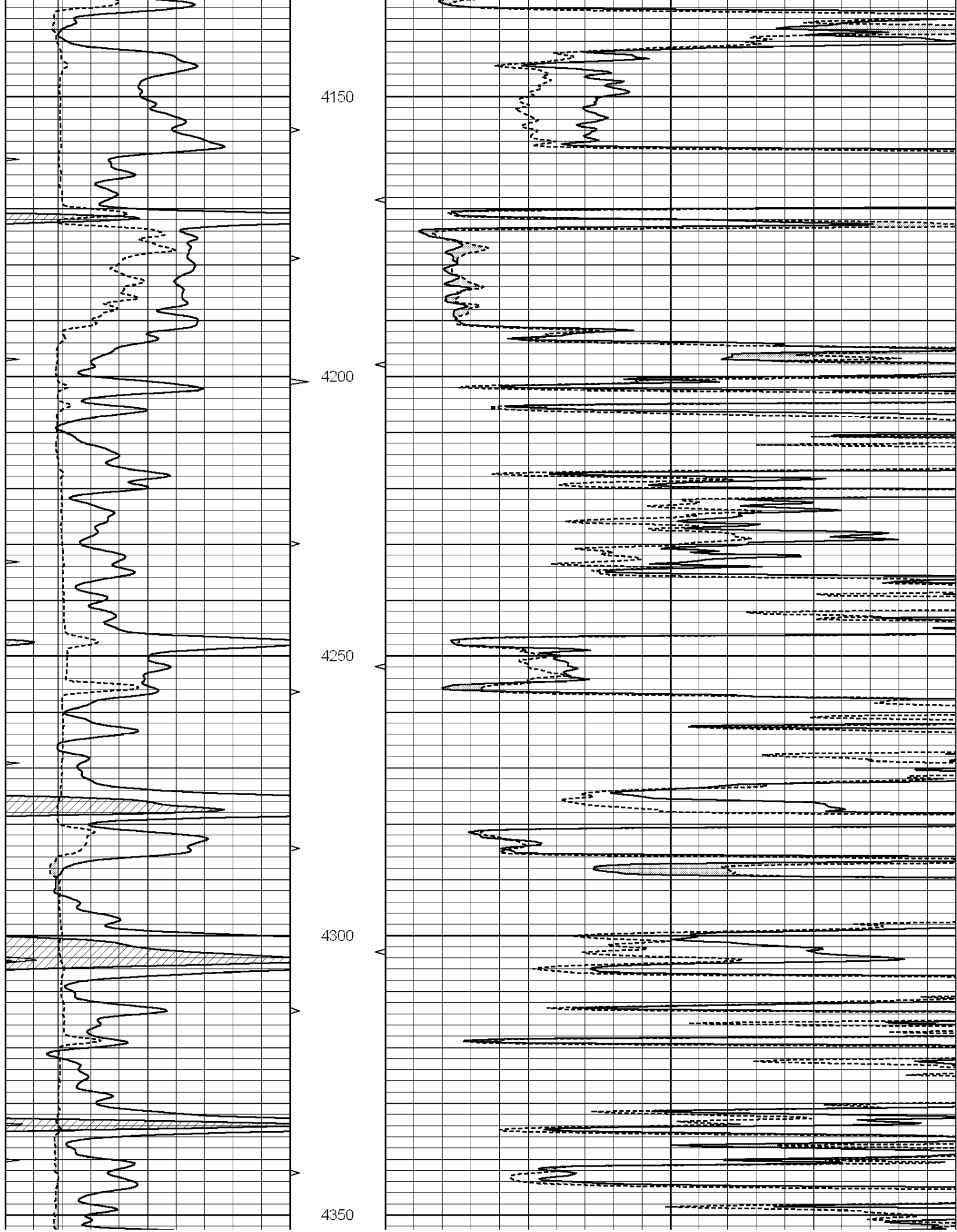
0	GAMMA RAY (GAPI)	150
6	MELCAL (in)	16
0	MINMK	20

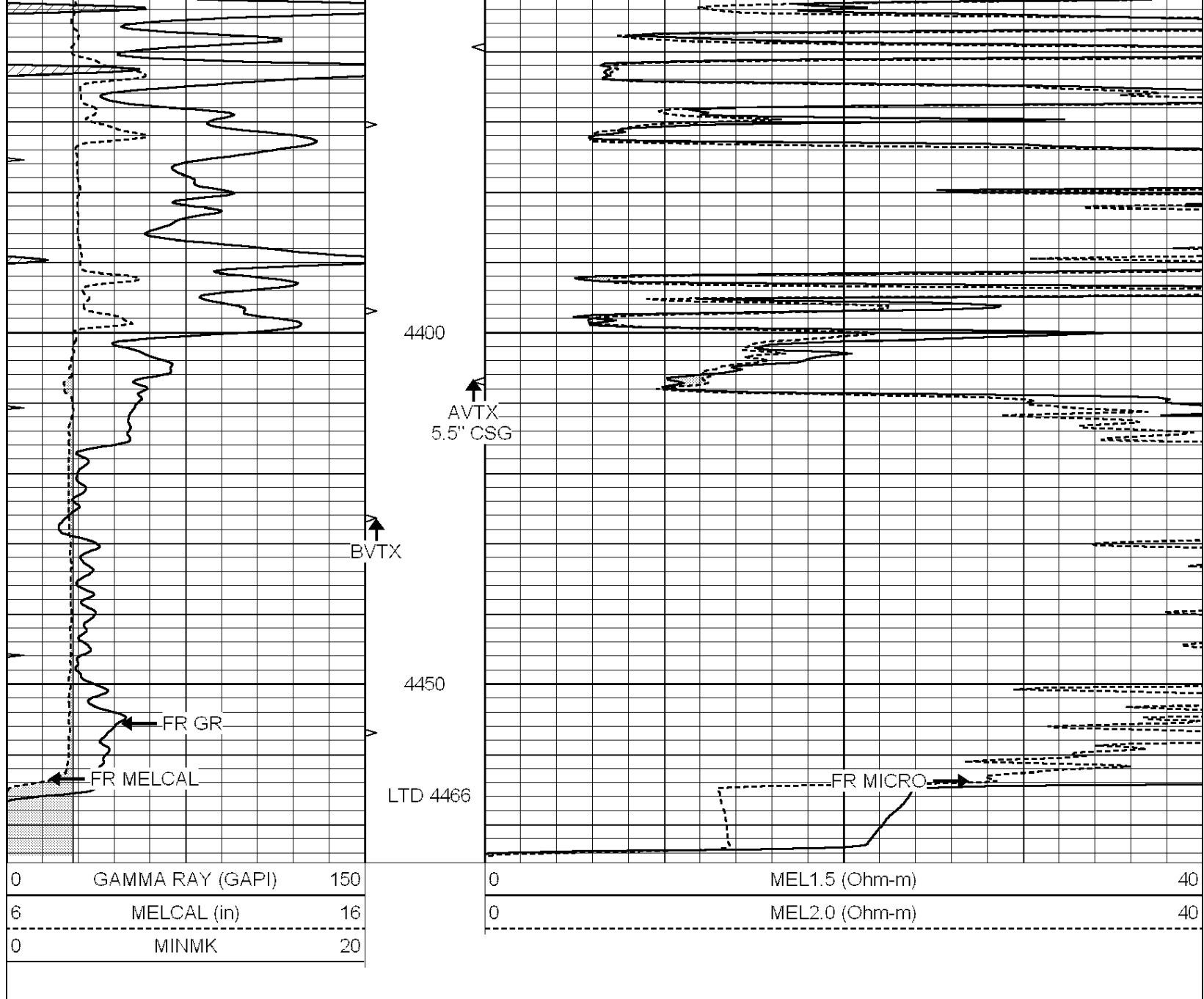
0	MEL1.5 (Ohm-m)	40
0	MEL2.0 (Ohm-m)	40









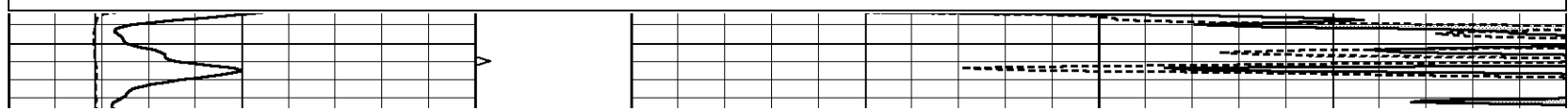


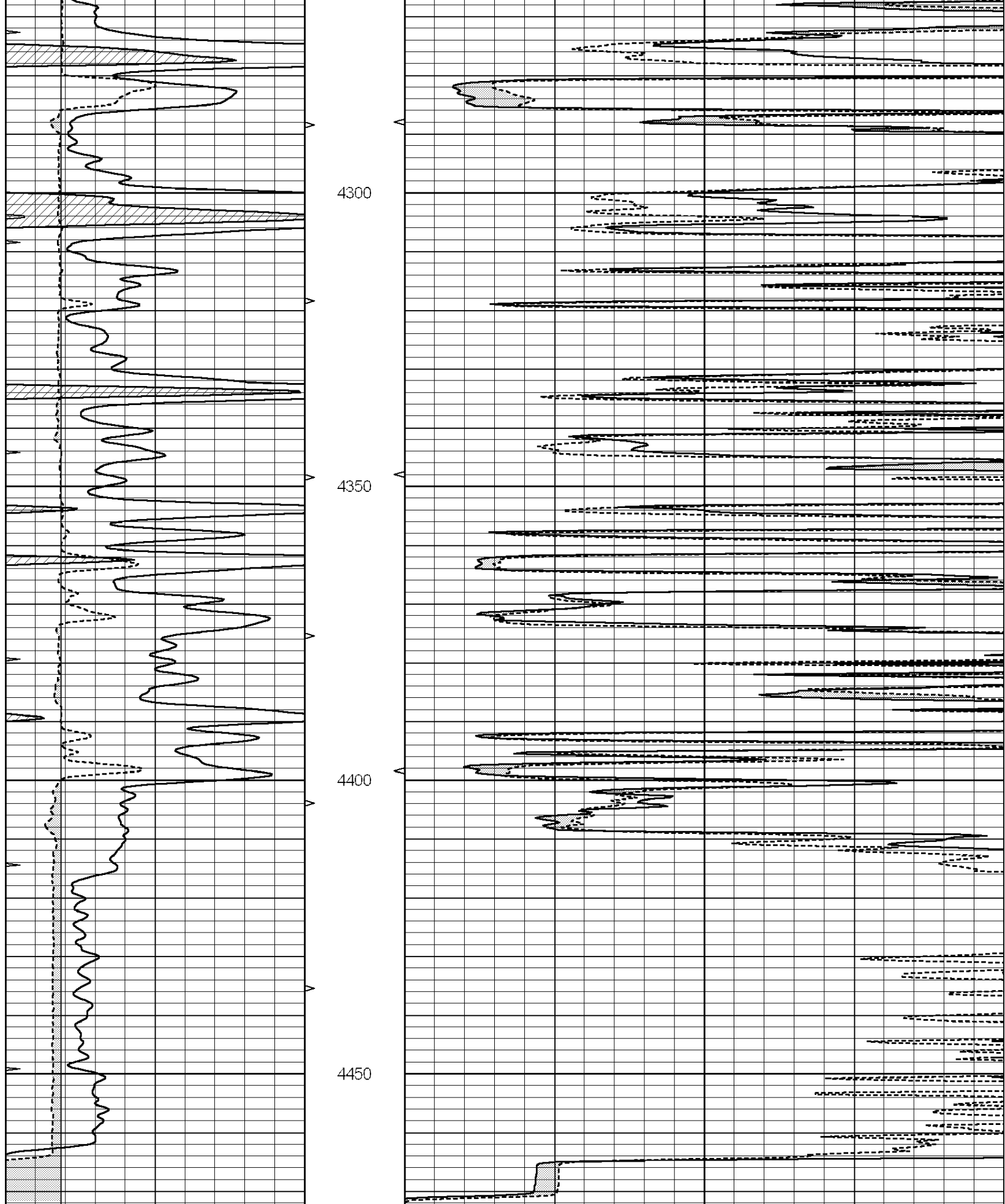
SUPERIOR
Hays,
Kansas

REPEAT SECTION

Database File: 008726ddn.db
 Dataset Pathname: pass4.1
 Presentation Format: micro
 Dataset Creation: Thu Apr 26 06:50:57 2012 by Calc Open-Cased 090629
 Charted by: Depth in Feet scaled 1:240

0	GAMMA RAY (GAPI)	150	0	MEL1.5 (Ohm-m)	40
6	MELCAL (in)	16	0	MEL2.0 (Ohm-m)	40
0	MINMK	20			





0	GAMMA RAY (GAPI)	150
6	MELCAL (in)	16
0	MINMK	20

0	MEL1.5 (Ohm-m)	40
0	MEL2.0 (Ohm-m)	40

Calibration Report

Database File: 008726ddn.db
 Dataset Pathname: pass5
 Dataset Creation: Thu Apr 26 06:53:10 2012 by Log Open-Cased 090629

MICRO Calibration Report

Serial Number: MICRO4
 Tool Model: PROBE
 Performed: Sun Apr 15 08:28:47 2012

Caliper Calibration:	Gain=2.242	Offset=-4.419
	Low Cal	High Cal
References	7.800	14.000
Readings	5.449	8.214

1.5" Calibration:	Gain=40.000	Offset=-0.800
	Low Cal	High Cal
References	0.000	20.000
Readings	0.009	1.541

2" Calibration:	Gain=50.000	Offset=0.000
	Low Cal	High Cal
References	0.000	20.000
Readings	0.004	1.198

Gamma Ray Calibration Report

Serial Number: GR5
 Tool Model: OPEN
 Performed: Sun Apr 22 06:58:16 2012

Calibrator Value:	1.0	GAPI
Background Reading:	0.0	cps
Calibrator Reading:	1.0	cps
Sensitivity:	0.7000	GAPI/cps