



**SUPERIOR
Hays,
Kansas**

**COMPENSATED
DENSITY / NEUTRON
LOG**

Company ETERNITY EXPLORATION, LLC.
Well BI PORTER #1-31
Field
County GOVE State KANSAS

Company ETERNITY EXPLORATION, LLC.
Well BI PORTER #1-31
Field
County GOVE
State KANSAS

Location: API #: 15-063-21985-0000
359' FNL & 1339' FEL
SE - NE - NW - NE
SEC 31 TWP 14S RGE 30W
Permanent Datum GROUND LEVEL Elevation 2704
Log Measured From KELLY BUSHING 5' A.G.L.
Drilling Measured From KELLY BUSHING
Other Services
DIL/MEL
Elevation
K.B. 2709
D.F. 2707
G.L. 2704

| | | | |
|------------------------------|---------------|-----------------|--|
| Date | 4-26-12 | | |
| Run Number | ONE | | |
| Depth Driller | 4465 | | |
| Depth Logger | 4466 | | |
| Bottom Logged Interval | 4442 | | |
| Top Log Interval | 3500 | | |
| Casing Driller | 208' | | |
| Casing Logger | 206' | | |
| Bit Size | 7.875 | | |
| Type Fluid in Hole | CHEMICAL MUD | | |
| Density / Viscosity | 9.3 / 53 | CHLORIDES 2.400 | |
| pH / Fluid Loss | 10.0 / 8.8 | | |
| Source of Sample | FLOWLINE | | |
| Rim @ Meas. Temp | 0.95 @ 97F | | |
| Rmf @ Meas. Temp | 0.71 @ 97F | | |
| Rmc @ Meas. Temp | 1.14 @ 97F | | |
| Source of Rmf / Rmc | MEASURED | | |
| Rim @ BHT | 0.77 @ 120F | | |
| Time Circulation Stopped | 2 HOURS | | |
| Time Logger on Bottom | | | |
| Maximum Recorded Temperature | 120F | | |
| Equipment Number | 860 | | |
| Location | HAYS, KS. | | |
| Recorded By | JEFF GRONEWEG | | |
| Witnessed By | SCOTT ALBERG | | |

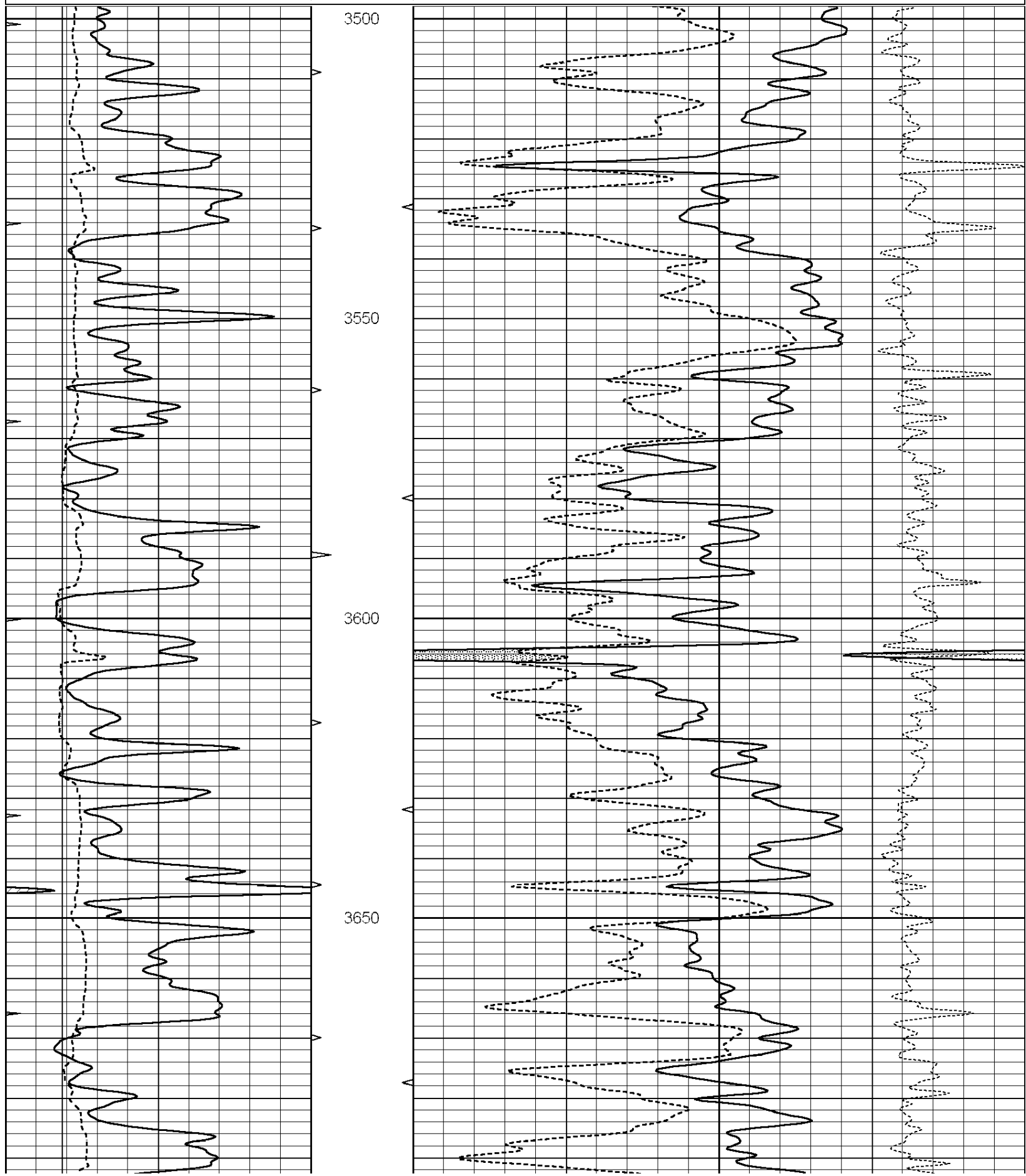
<<< Fold Here >>>

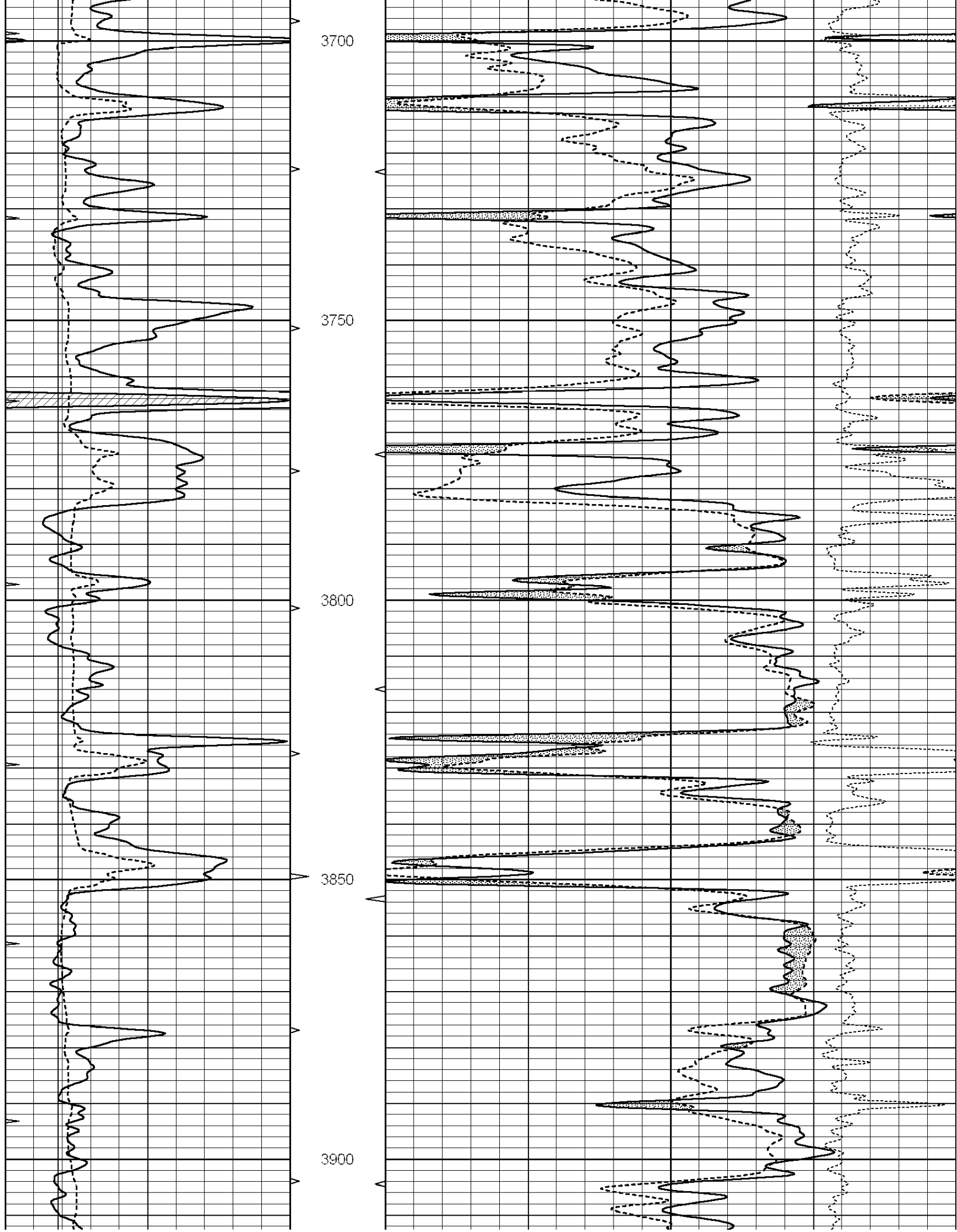
All interpretations are opinions based on inferences from electrical or other measurements and we cannot and do not guarantee the accuracy or correctness of any interpretation, and we shall not, except in the case of gross or willful negligence on our part, be liable or responsible for any loss, costs, damages, or expenses incurred or sustained by anyone resulting from any interpretation made by any of our officers, agents or employees. These interpretations are also subject to our general terms and conditions set out in our current Price Schedule.

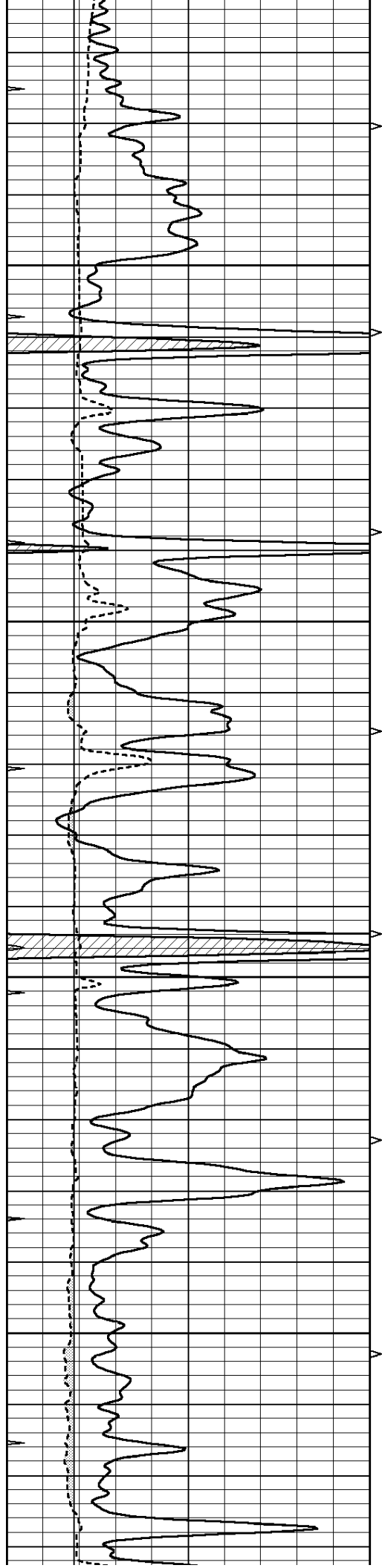
Comments

SUPERIOR WELL SERVICES
785-628-6395
THANK YOU FOR YOUR BUSINESS
DIRECTIONS: GOVE, KS - 10 MILES SOUTH TO RD I
10 MILES WEST - 1 MILE SOUTH - WEST INTO

| | | | | | | |
|---|------------------|-----|----------|------|--------------------------|------|
| 0 | GAMMA RAY (GAPI) | 150 | ABHV | 30 | COMPENSATED DENSITY (pu) | -10 |
| 6 | CALIPER (in) | 16 | 10 (ft3) | 0 30 | COMPENSATED NEUTRON (pu) | -10 |
| 0 | MINMK | 20 | TBHV | | -0.25 CORRECTION (g/cc) | 0.25 |
| | | | 0 (ft3) | 10 | | |





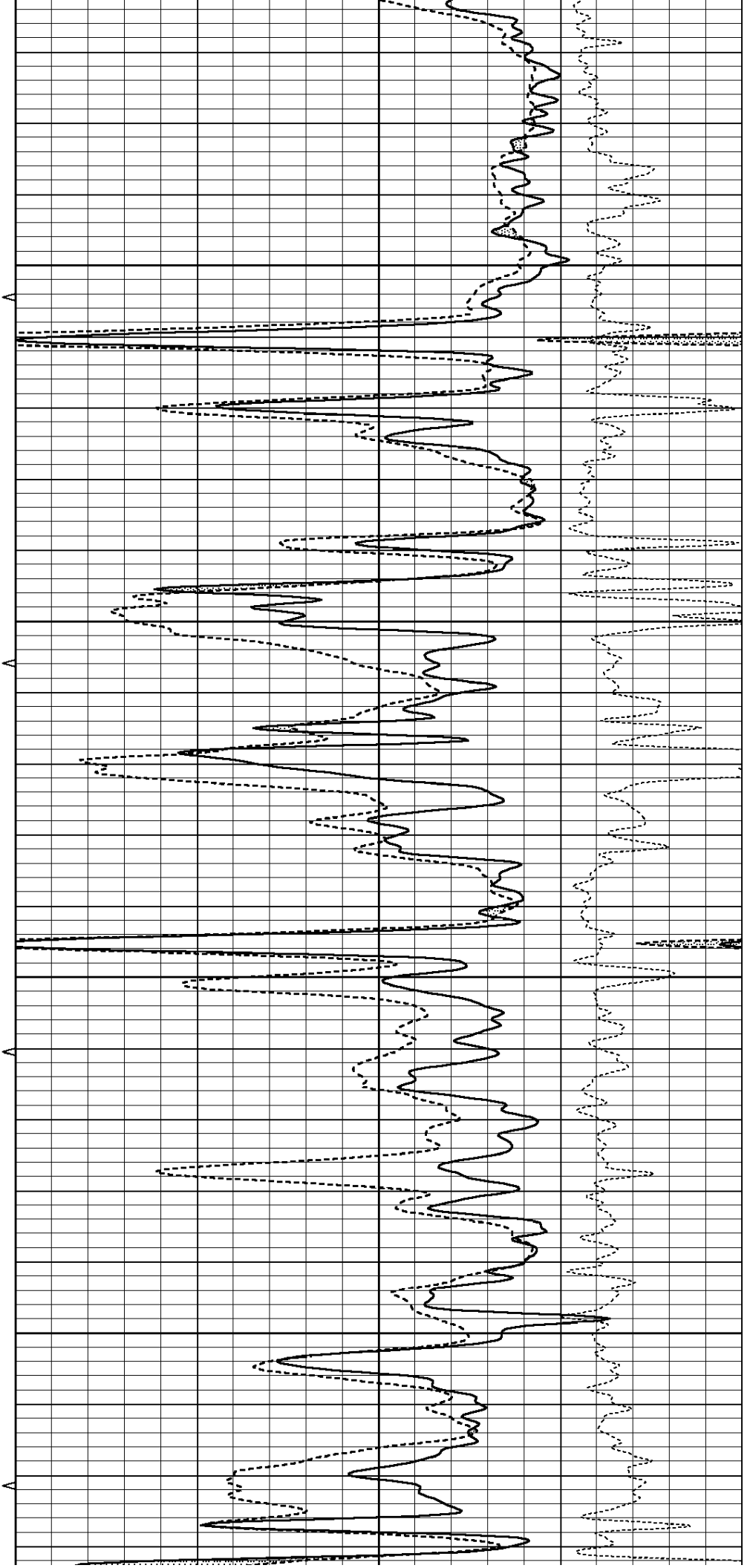


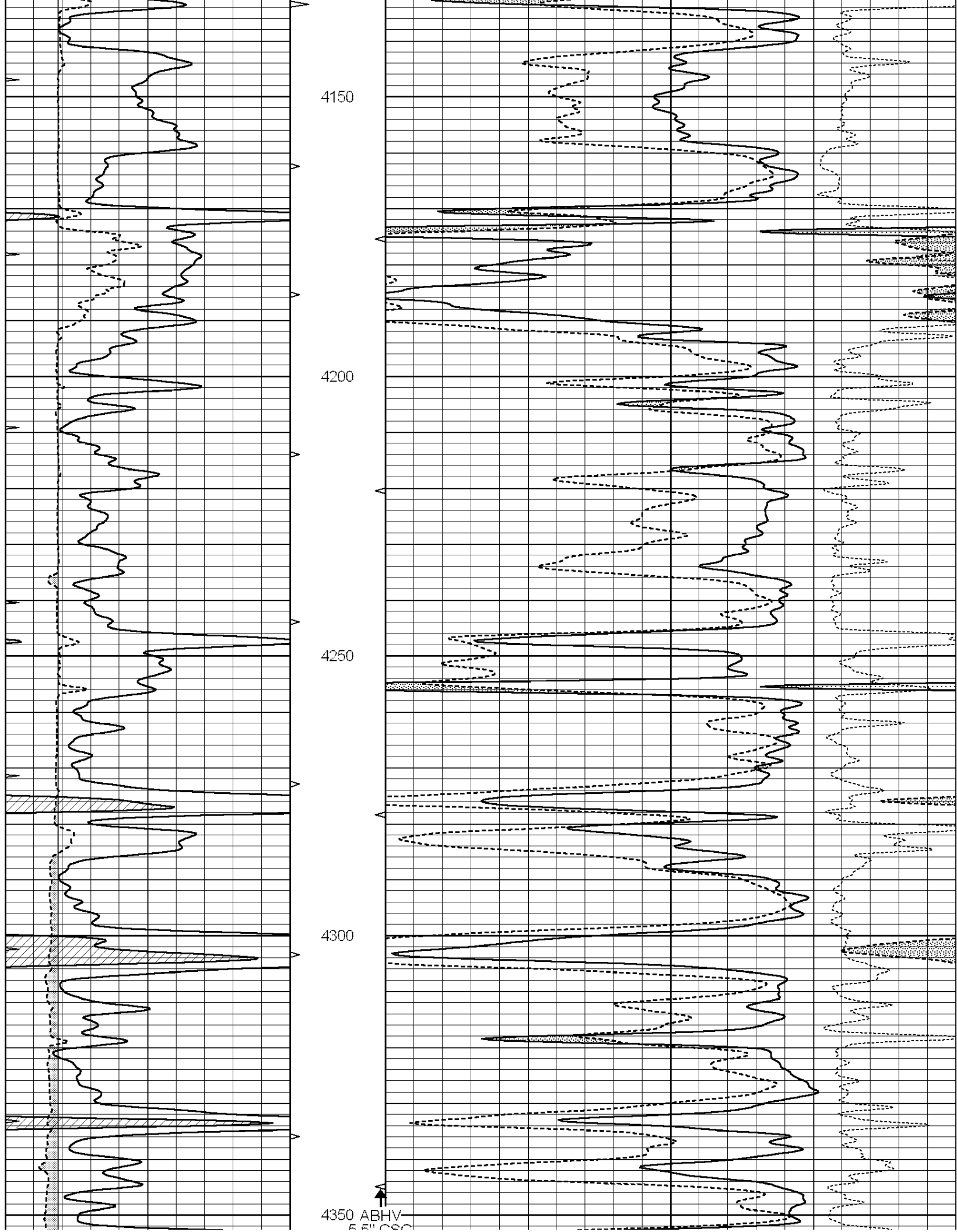
3950

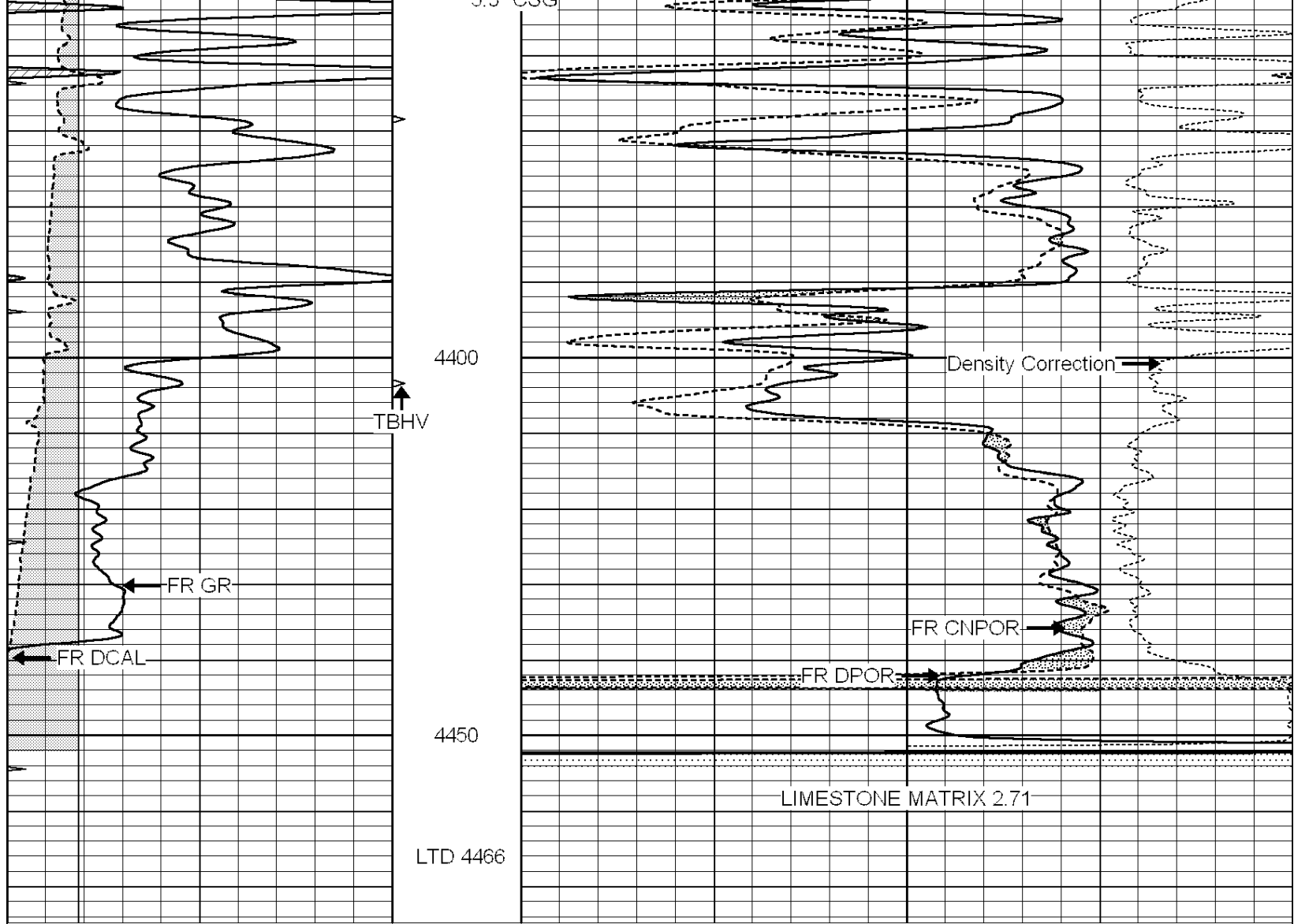
4000

4050

4100







| | | | | | | |
|---|------------------|-----|----------|------|--------------------------|------|
| 0 | GAMMA RAY (GAPI) | 150 | ABHV | 30 | COMPENSATED DENSITY (pu) | -10 |
| 6 | CALIPER (in) | 16 | 10 (ft3) | 0 30 | COMPENSATED NEUTRON (pu) | -10 |
| 0 | MINMK | 20 | TBHV | | -0.25 CORRECTION (g/cc) | 0.25 |
| | | | 0 (ft3) | 10 | | |

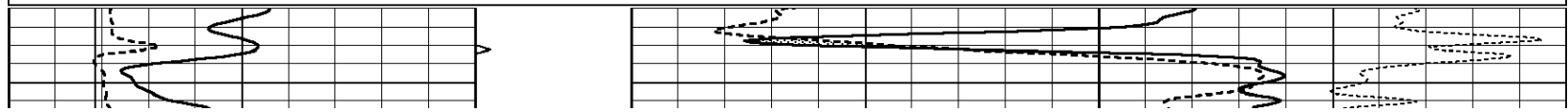


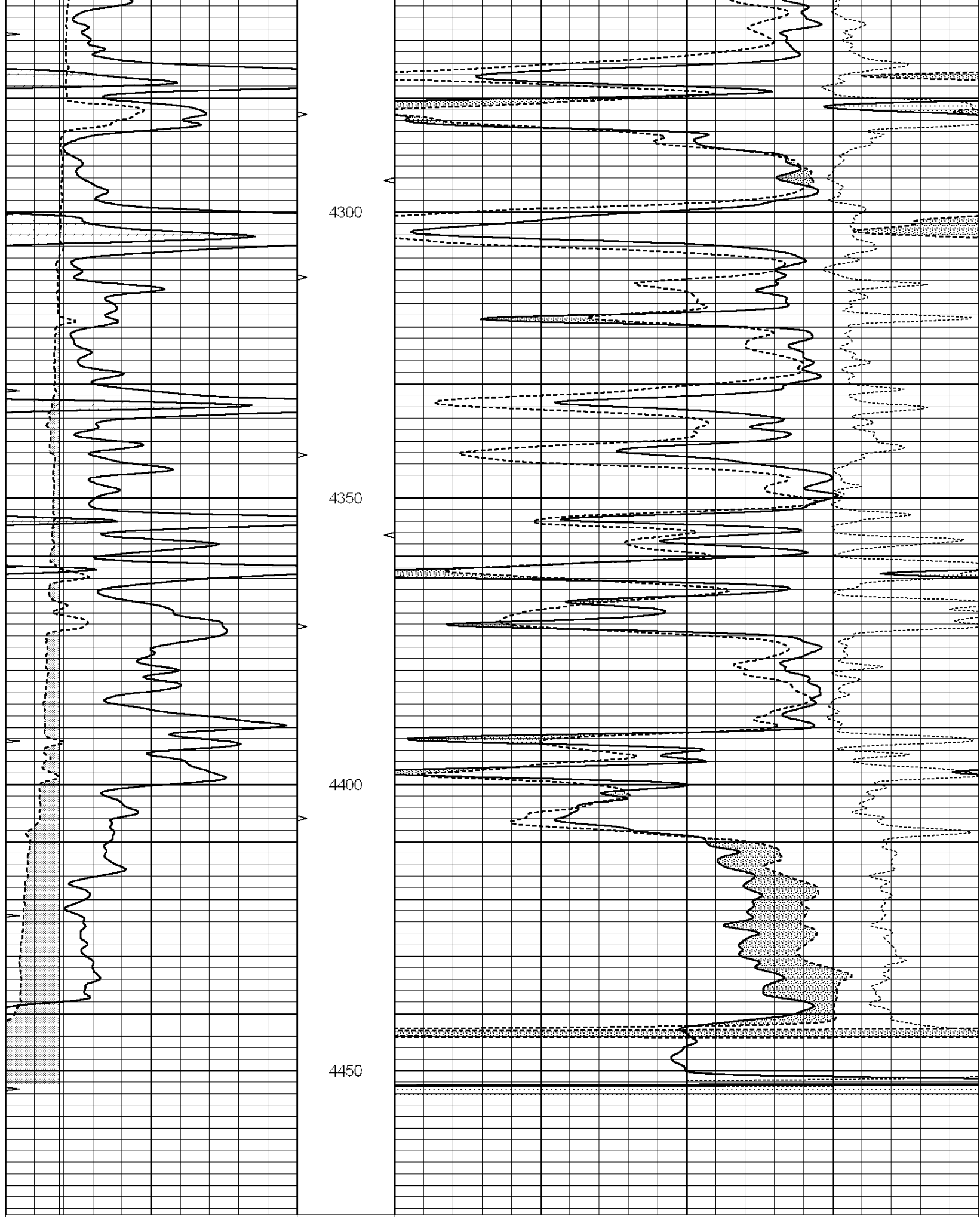
SUPERIOR
Hays,
Kansas

REPEAT SECTION

Database File: 008726ddn.db
 Dataset Pathname: pass2.2
 Presentation Format: den_neu
 Dataset Creation: Thu Apr 26 05:43:12 2012 by Calc Open-Cased 090629
 Charted by: Depth in Feet scaled 1:240

| | | | | | | |
|---|------------------|-----|----------|------|--------------------------|------|
| 0 | GAMMA RAY (GAPI) | 150 | ABHV | 30 | COMPENSATED DENSITY (pu) | -10 |
| 6 | CALIPER (in) | 16 | 10 (ft3) | 0 30 | COMPENSATED NEUTRON (pu) | -10 |
| 0 | MINMK | 20 | TBHV | | -0.25 CORRECTION (g/cc) | 0.25 |
| | | | 0 (ft3) | 10 | | |





| | | | | | | |
|---|------------------|-----|----------|------|--------------------------|-----|
| 0 | GAMMA RAY (GAPI) | 150 | ABHV | 30 | COMPENSATED DENSITY (pu) | -10 |
| 6 | CAL IPER (in) | 16 | 10 (ft3) | 0.30 | COMPENSATED NEUTRON (pu) | -10 |

| | | | | | | |
|---|-------|----|------------|-------|-------------------|------|
| 0 | MINMK | 20 | TBHV | -0.25 | CORRECTION (g/cc) | 0.25 |
| | | | 0 (ft3) 10 | | | |

Calibration Report

Database File: 008726ddn.db
 Dataset Pathname: pass3.7
 Dataset Creation: Thu Apr 26 05:38:22 2012 by Calc Open-Cased 090629

Dual Induction Calibration Report

Serial-Model: PROBE9-DILG
 Surface Cal Performed: Sun Apr 22 06:58:49 2012
 Downhole Cal Performed: Mon Jul 28 12:02:56 2008
 After Survey Verification Performed: Mon Jul 28 12:02:56 2008

Surface Calibration

| Loop: | Readings | | | References | | | Results | |
|-----------|----------|-------|---|------------|---------|--------|---------|---------|
| | Air | Loop | V | Air | Loop | mmho/m | m | b |
| Deep | -0.014 | 0.629 | V | 0.000 | 400.000 | mmho/m | 550.000 | -15.000 |
| Medium | 0.039 | 0.728 | V | 0.000 | 464.000 | mmho/m | 540.000 | -18.000 |
| Internal: | Zero | Cal | | Zero | Cal | | m | b |
| Deep | 0.011 | 0.610 | V | 0.000 | 400.000 | mmho/m | 667.135 | -7.256 |
| Medium | 0.005 | 0.712 | V | 0.000 | 464.000 | mmho/m | 655.677 | -3.102 |

Downhole Calibration

| | Readings | | | References | | | Results | |
|--------|----------|--------|--------|------------|----------|--------|---------|-------|
| | Zero | Cal | | Zero | Cal | mmho/m | m' | b' |
| Deep | 0.000 | 0.000 | mmho/m | 14.508 | 388.384 | mmho/m | 1.000 | 0.000 |
| Medium | 0.000 | 0.000 | mmho/m | 166.367 | 504.400 | mmho/m | 1.000 | 0.000 |
| LL3 | | 7.500 | V | | 1400.000 | Ohm-m | | |
| | | 0.000 | V | | 20.000 | Ohm-m | | |
| | | -7.200 | V | | 3970.000 | mmho-m | | |

After Survey Verification

| | Readings | | | Targets | | | Results | |
|--------|----------|-------|--------|---------|-------|--------|---------|-------|
| | Zero | Cal | | Zero | Cal | mmho/m | m' | b' |
| Deep | 0.000 | 0.000 | mmho/m | 0.000 | 0.000 | mmho/m | 0.000 | 0.000 |
| Medium | 0.000 | 0.000 | mmho/m | 0.000 | 0.000 | mmho/m | 0.000 | 0.000 |
| LL3 | | 1.000 | Ohm-m | | 1.000 | Ohm-m | | |
| | | 0.000 | Ohm-m | | 0.000 | Ohm-m | | |
| | | 1.000 | mmho-m | | 1.000 | mmho-m | | |

Compensated Density Calibration Report

Serial-Model: GEAR1-GEARHART
 Source / Verifier: 147 / 147
 Master Calibration Performed: Thu Apr 19 16:32:51 2012

Master Calibration

| | Density | | Far Detector | Near Detector | |
|---------------------|---------|------|-----------------------------|---------------|-----|
| | | g/cc | | | cps |
| Magnesium | 1.710 | g/cc | 1243.76 | 629.14 | cps |
| Aluminum | 2.580 | g/cc | 282.16 | 435.01 | cps |
| Spine Angle = 76.03 | | | Density/Spine Ratio = 0.569 | | |
| | Size | | Reading | | |

| | | | | |
|------------|-------|----|------|---|
| Small Ring | 9.70 | in | 3.50 | V |
| Large Ring | 16.00 | in | 5.30 | V |

Compensated Neutron Calibration Report

Serial Number: NUE_2I
 Tool Model: G

CALIBRATION

| Detector | Readings | Target | Normalization |
|-------------|----------|----------|---------------|
| Short Space | 1.00 cps | 1.00 cps | 1.0000 |
| Long Space | 1.00 cps | 1.00 cps | 1.0000 |

Gamma Ray Calibration Report

Serial Number: GR5
 Tool Model: OPEN
 Performed: Sun Apr 22 06:58:16 2012

Calibrator Value: 1.0 GAPI

Background Reading: 0.0 cps
 Calibrator Reading: 1.0 cps

Sensitivity: 0.7000 GAPI/cps