



**SUPERIOR  
Hays,  
Kansas**

**DUAL  
INDUCTION  
LOG**

Company ETERNITY EXPLORATION, LLC.  
Well BI PORTER #1-31  
Field  
County GOVE State KANSAS

Company ETERNITY EXPLORATION, LLC.  
Well BI PORTER #1-31  
Field  
County GOVE  
State KANSAS

Location: API #: 15-063-21985-0000  
359' FNL & 1339' FEL  
SE - NE - NW - NE  
SEC 31 TWP 14S RGE 30W  
Permanent Datum GROUND LEVEL Elevation 2704  
Log Measured From KELLY BUSHING 5' A.G.L.  
Drilling Measured From KELLY BUSHING  
Other Services  
CDL/CNL  
MEL  
Elevation  
K.B. 2709  
D.F. 2707  
G.L. 2704

Date	4-26-12		
Run Number	ONE		
Depth Driller	4465		
Depth Logger	4466		
Bottom Logged Interval	4464		
Top Log Interval	0		
Casing Driller	208'		
Casing Logger	206'		
Bit Size	7.875		
Type Fluid in Hole	CHEMICAL MUD		
Density / Viscosity	9.3 / 53	CHLORIDES 2.400	
pH / Fluid Loss	10.0 / 8.8		
Source of Sample	FLOWLINE		
Rim @ Meas. Temp	0.95 @ 97F		
Rmf @ Meas. Temp	0.71 @ 97F		
Rmc @ Meas. Temp	1.14 @ 97F		
Source of Rmf / Rmc	MEASURED		
Rim @ BHT	0.77 @ 120F		
Time Circulation Stopped	2 HOURS		
Time Logger on Bottom			
Maximum Recorded Temperature	120F		
Equipment Number	860		
Location	HAYS, KS.		
Recorded By	JEFF GRONEWEG		
Witnessed By	SCOTT ALBERG		

<<< Fold Here >>>

All interpretations are opinions based on inferences from electrical or other measurements and we cannot and do not guarantee the accuracy or correctness of any interpretation, and we shall not, except in the case of gross or willful negligence on our part, be liable or responsible for any loss, costs, damages, or expenses incurred or sustained by anyone resulting from any interpretation made by any of our officers, agents or employees. These interpretations are also subject to our general terms and conditions set out in our current Price Schedule.

Comments

**SUPERIOR WELL SERVICES**  
 785-628-6395  
 THANK YOU FOR YOUR BUSINESS  
 DIRECTIONS: GOVE, KS - 10 MILES SOUTH TO RD I  
 10 MILES WEST - 1 MILE SOUTH - WEST INTO

0 Gamma Ray (GAPI) 150

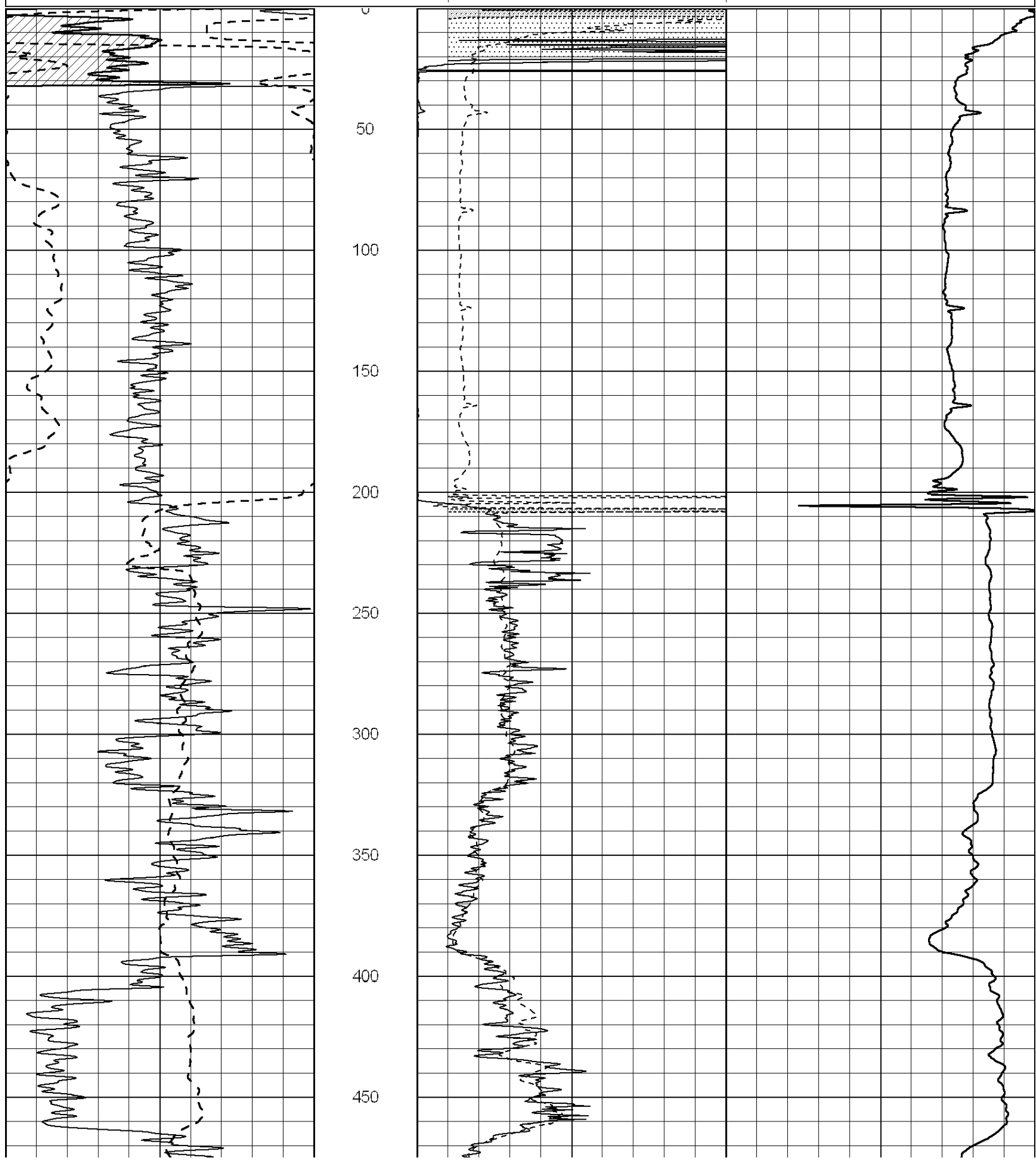
0 RLL3 (Ohm-m) 50

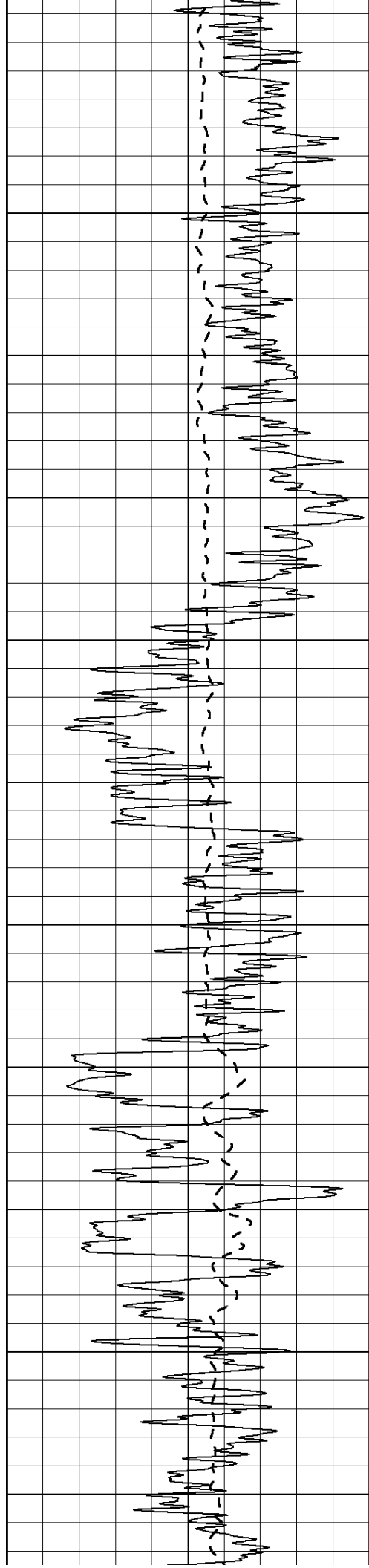
0 Deep Induction (Ohm-m) 50

1000 CILD (mmho/m) 0

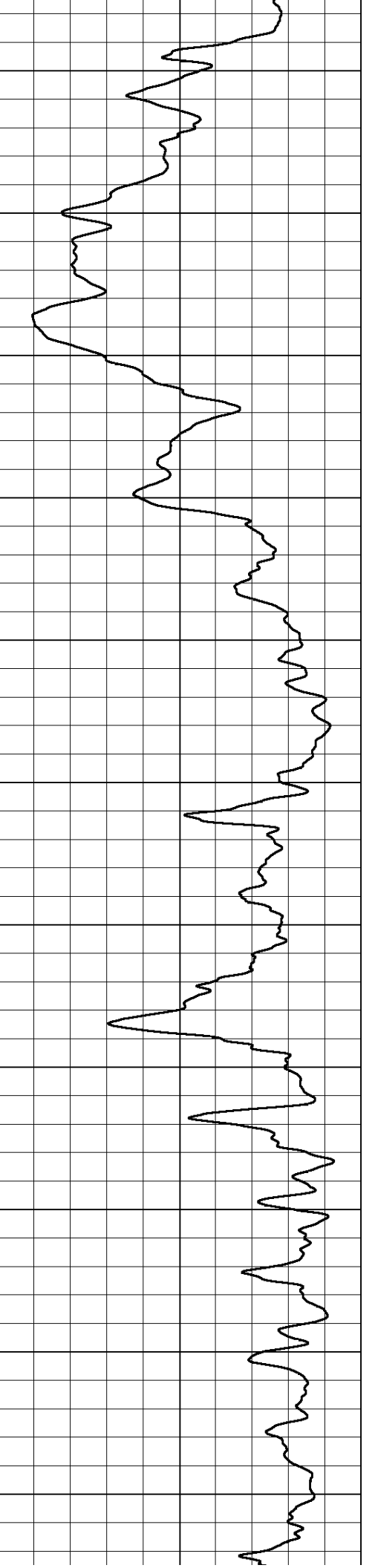
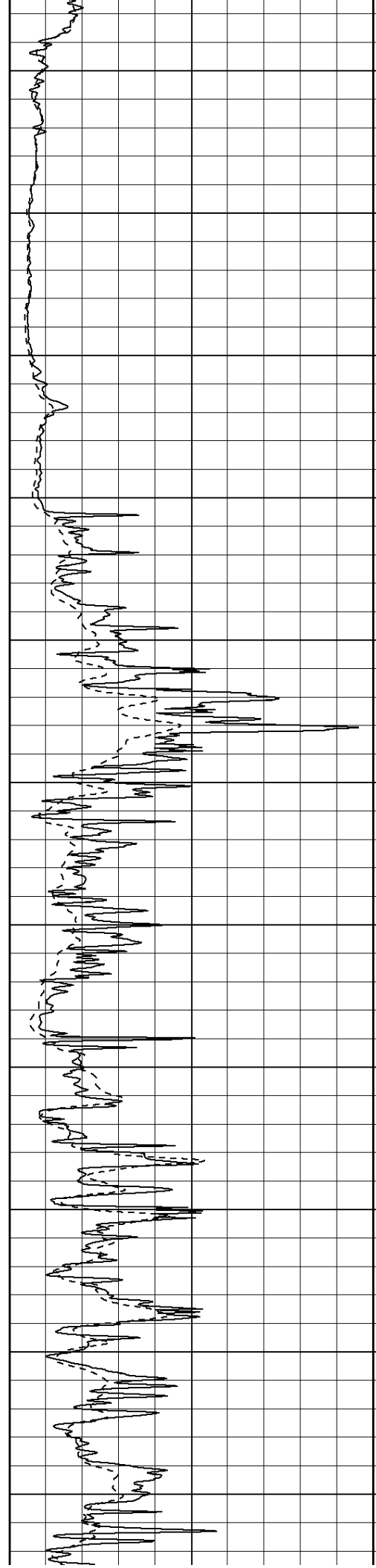
50 RILD X10 (Ohm-m) 500

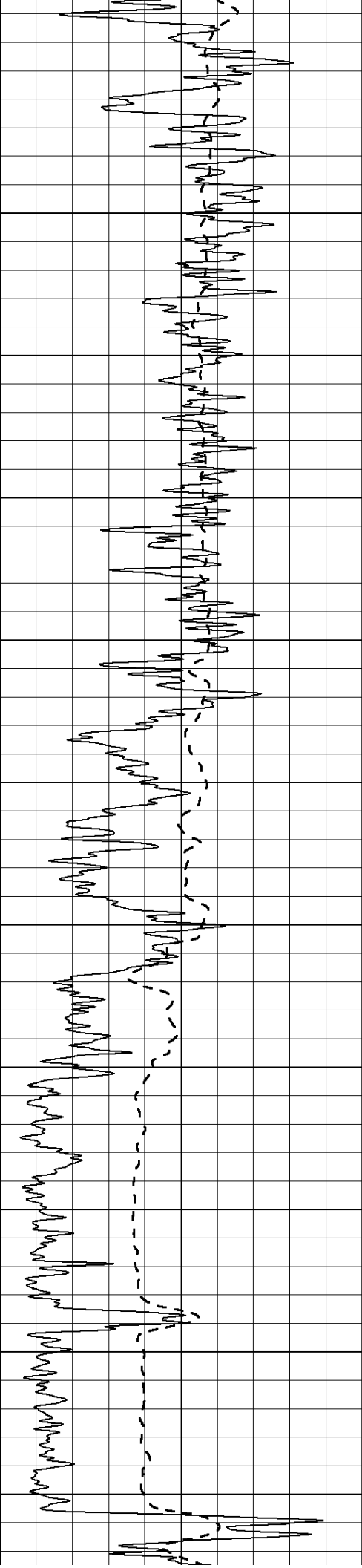
50 RLL3 X10 (Ohm-m) 500



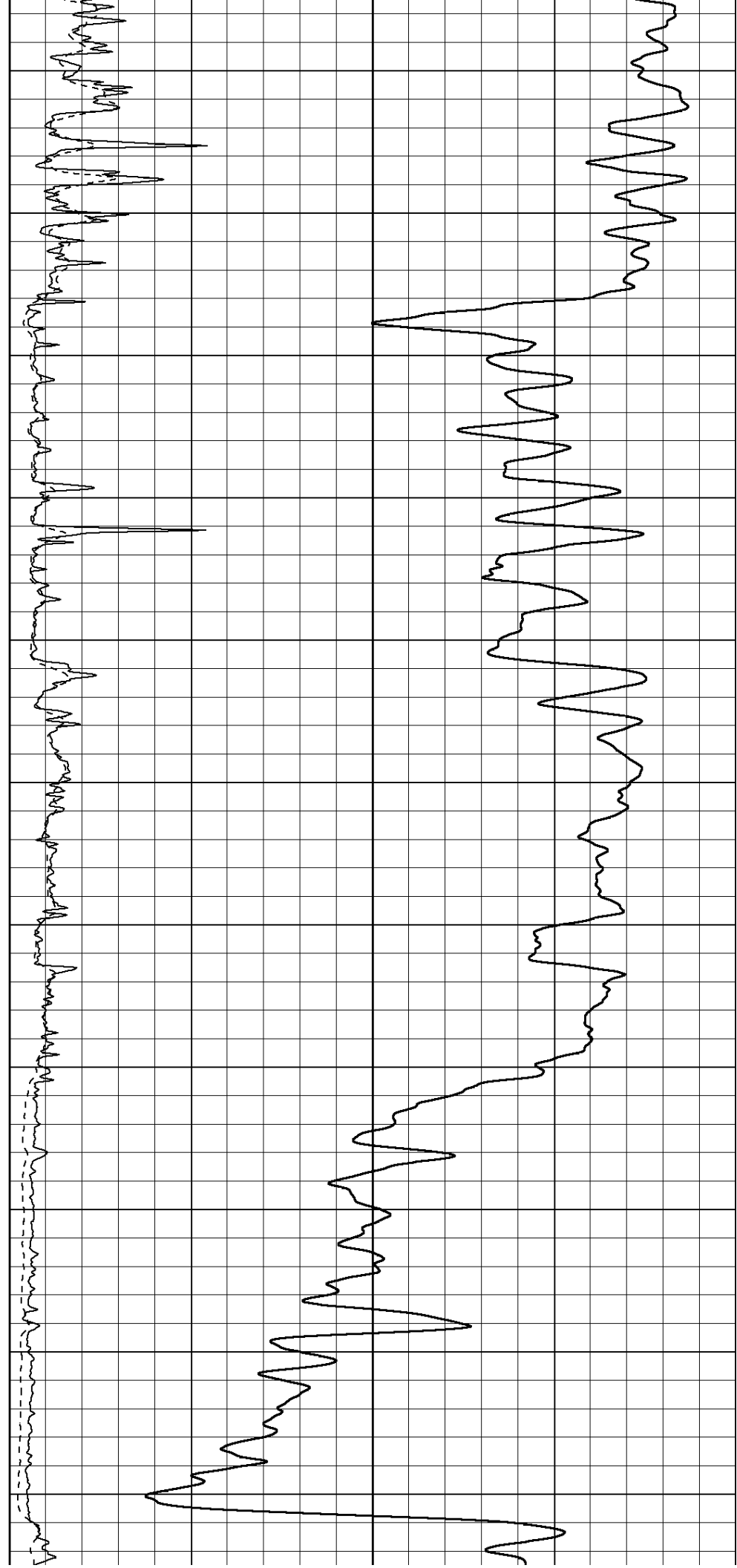


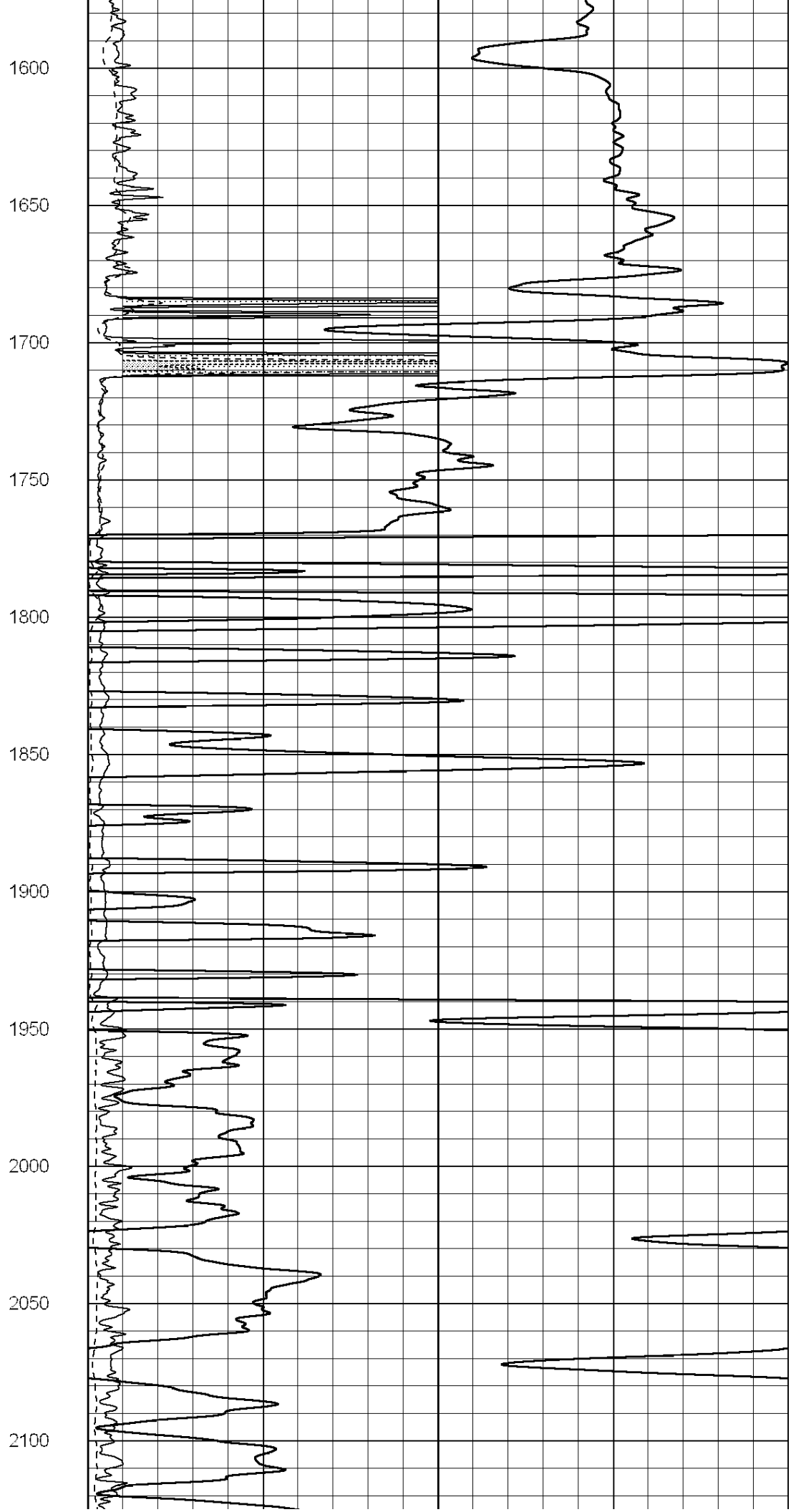
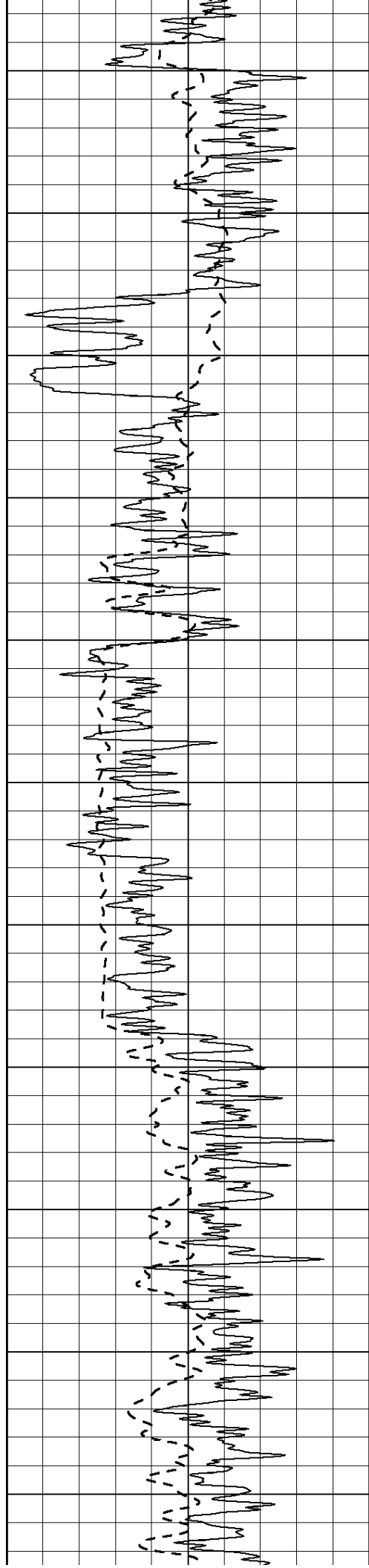
500  
550  
600  
650  
700  
750  
800  
850  
900  
950  
1000

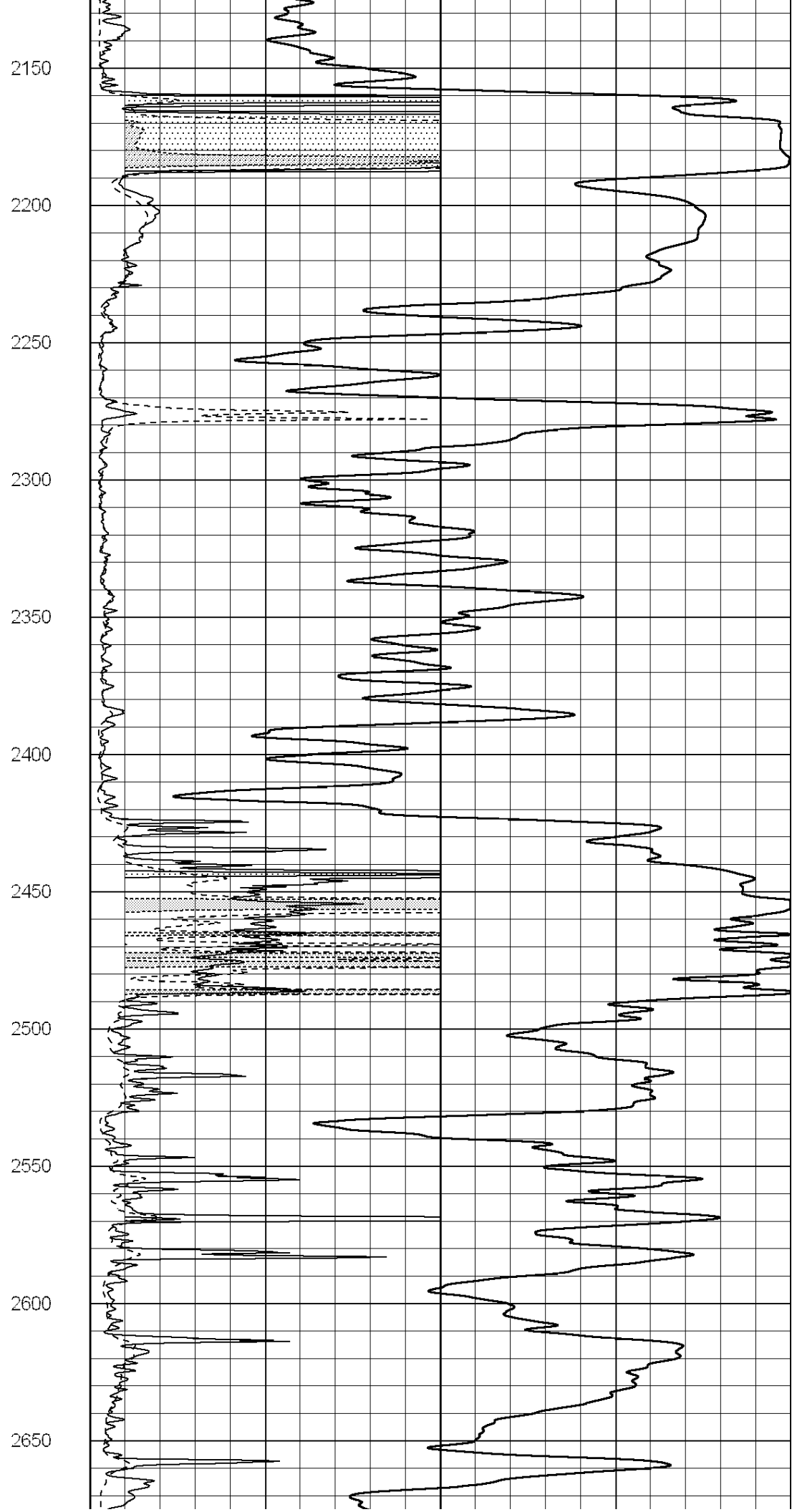
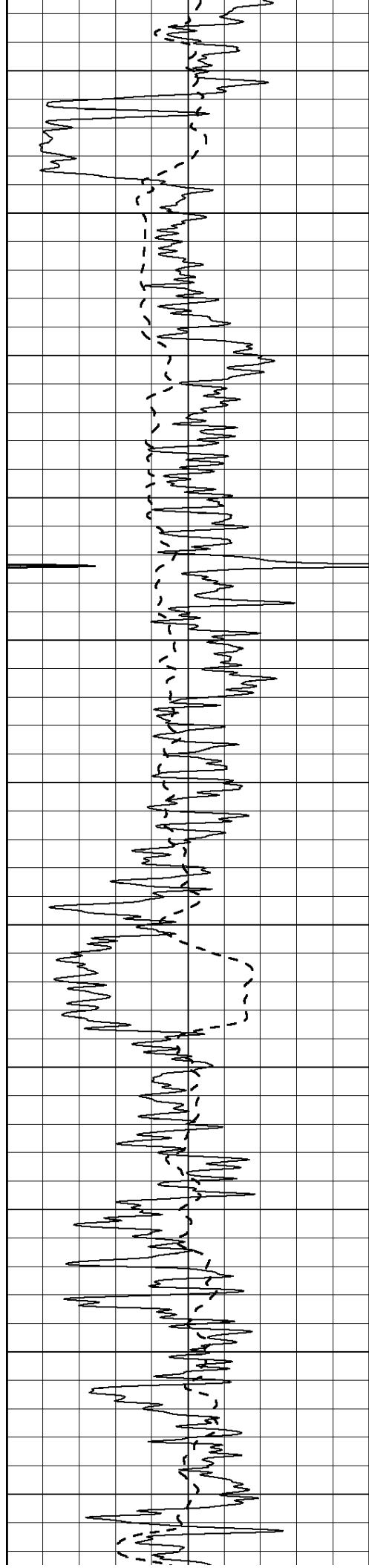


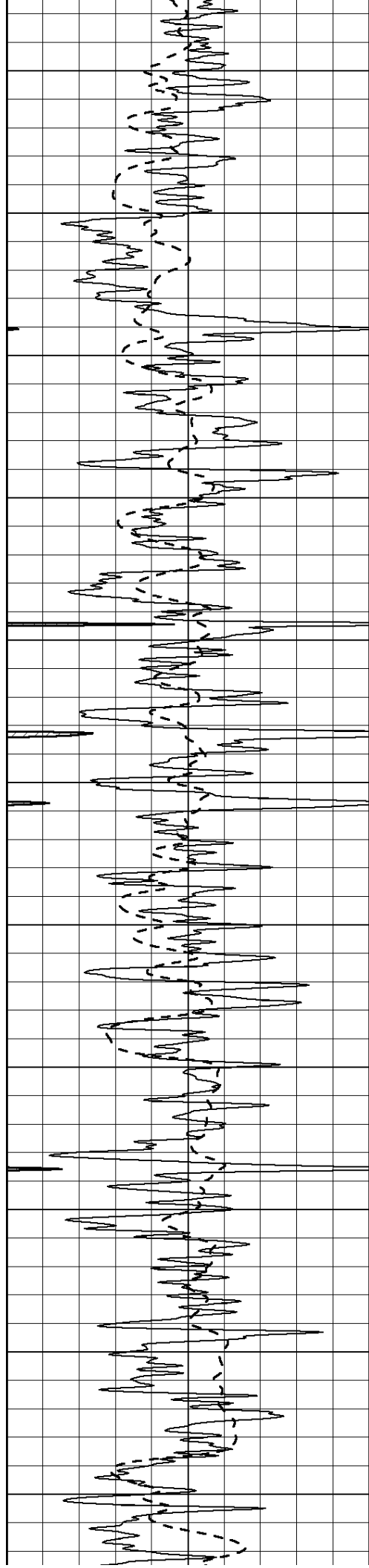


1050  
1100  
1150  
1200  
1250  
1300  
1350  
1400  
1450  
1500  
1550

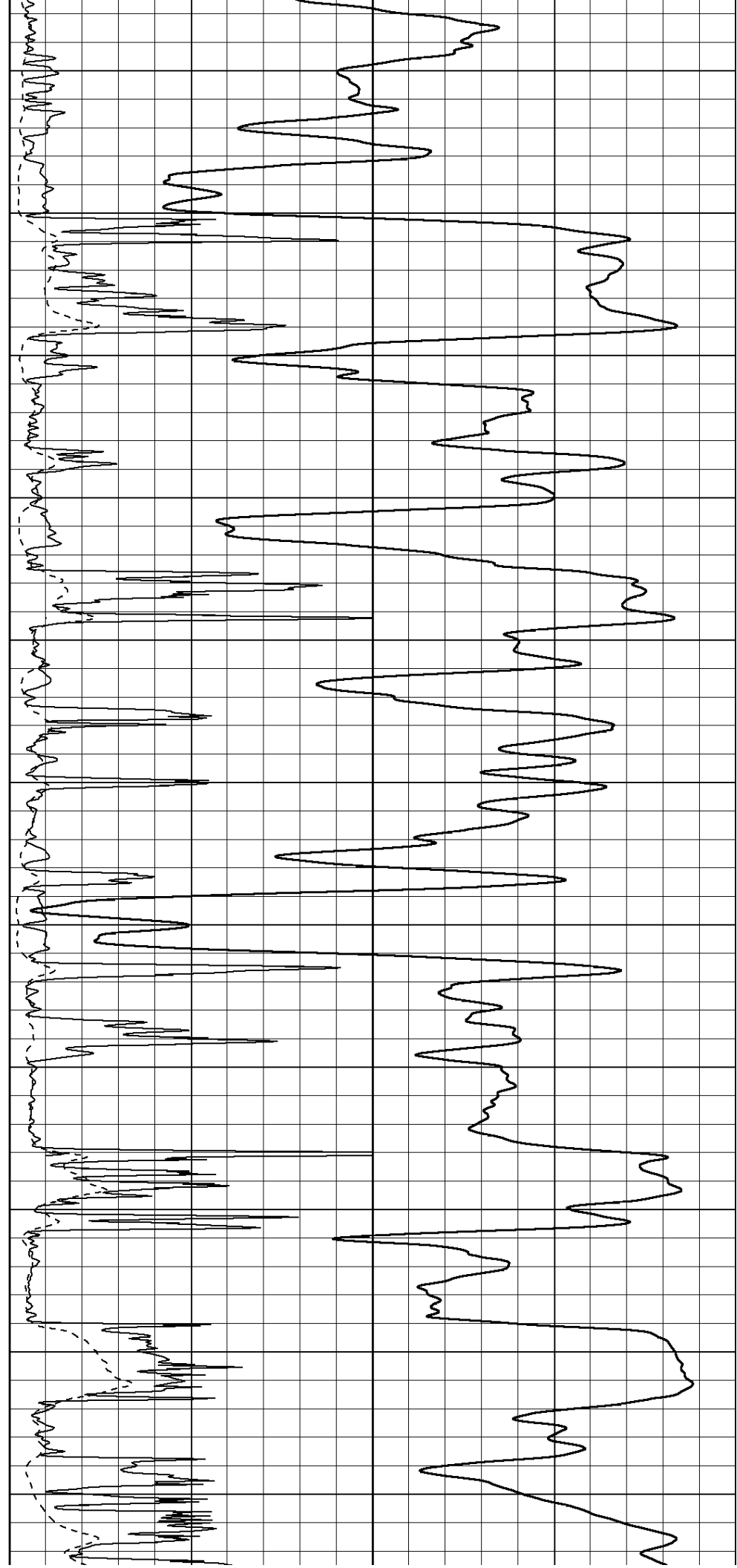


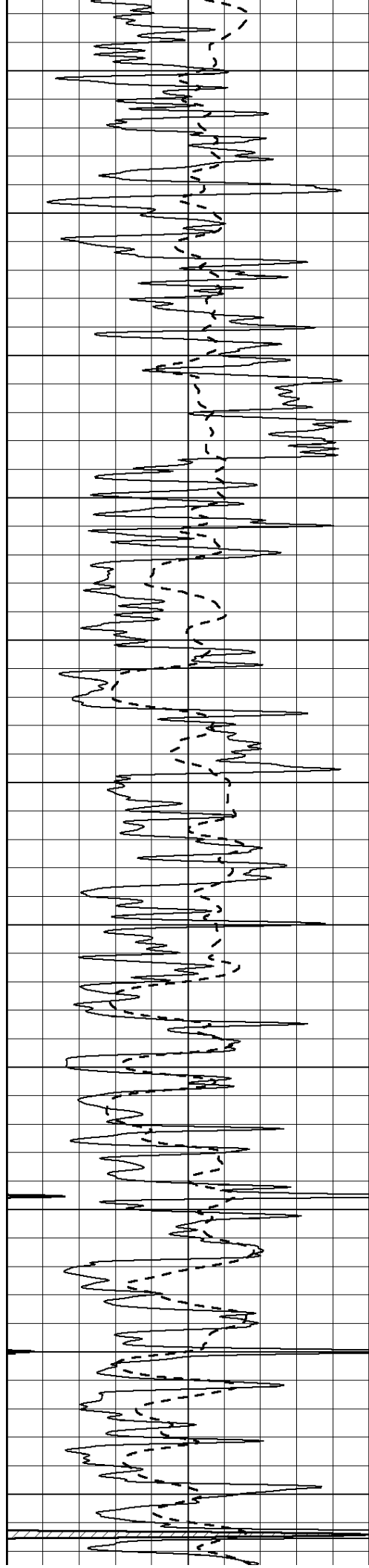






2700  
2750  
2800  
2850  
2900  
2950  
3000  
3050  
3100  
3150  
3200





3250

3300

3350

3400

3450

3500

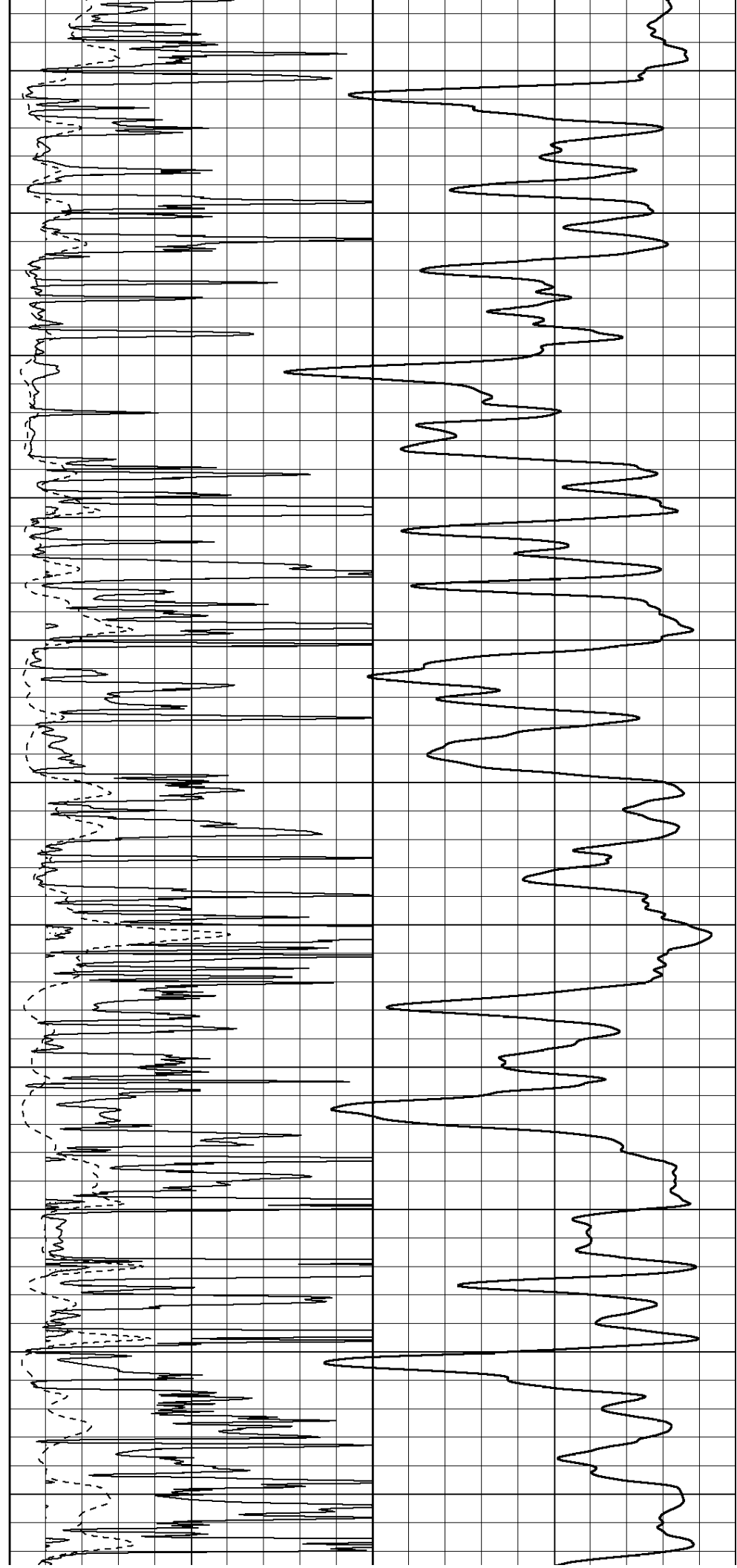
3550

3600

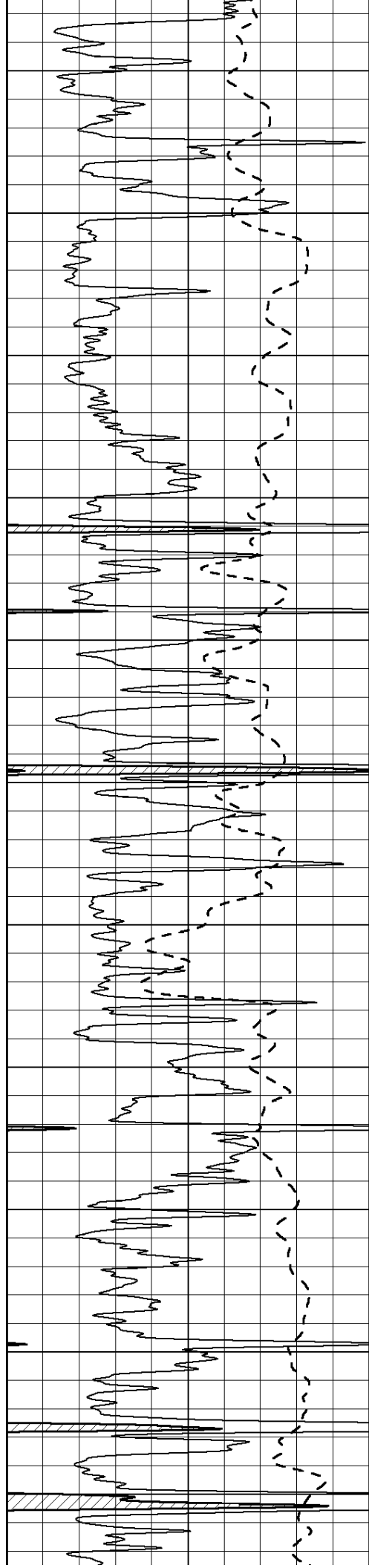
3650

3700

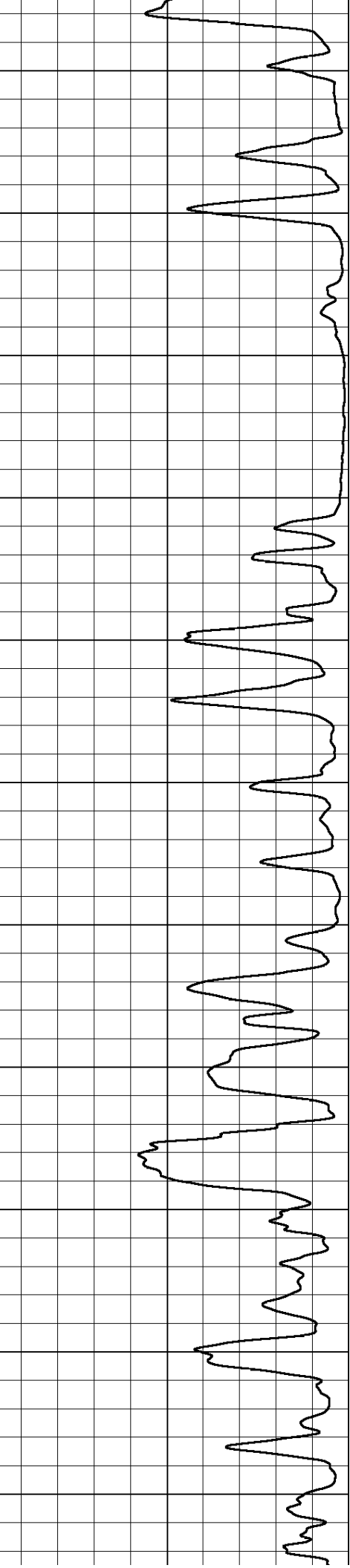
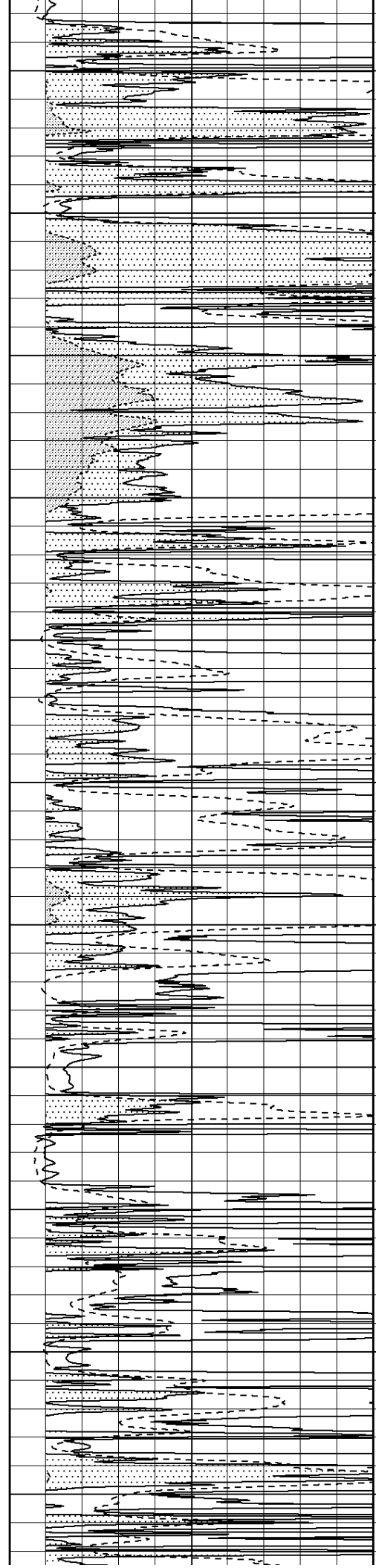
3750

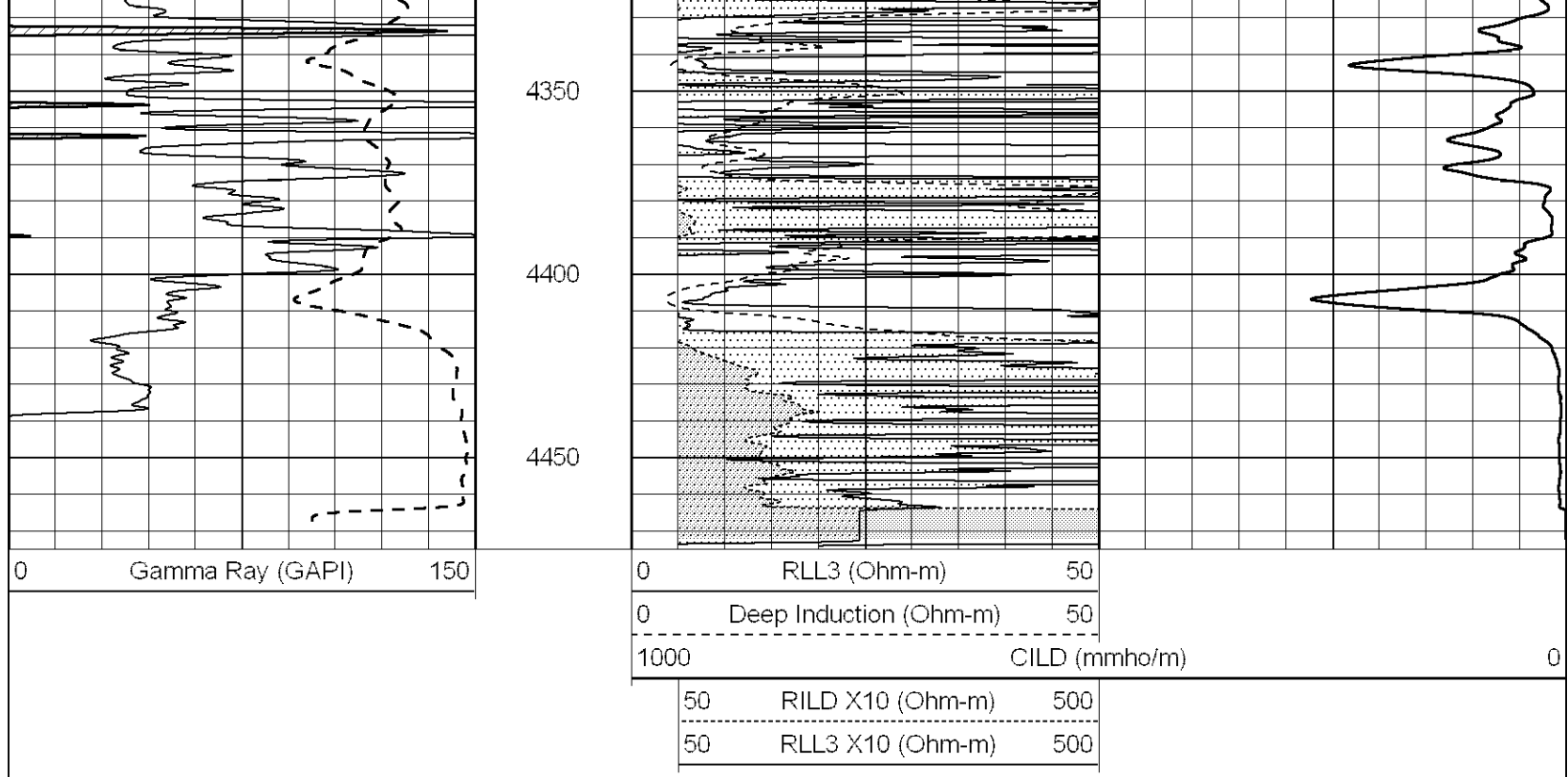






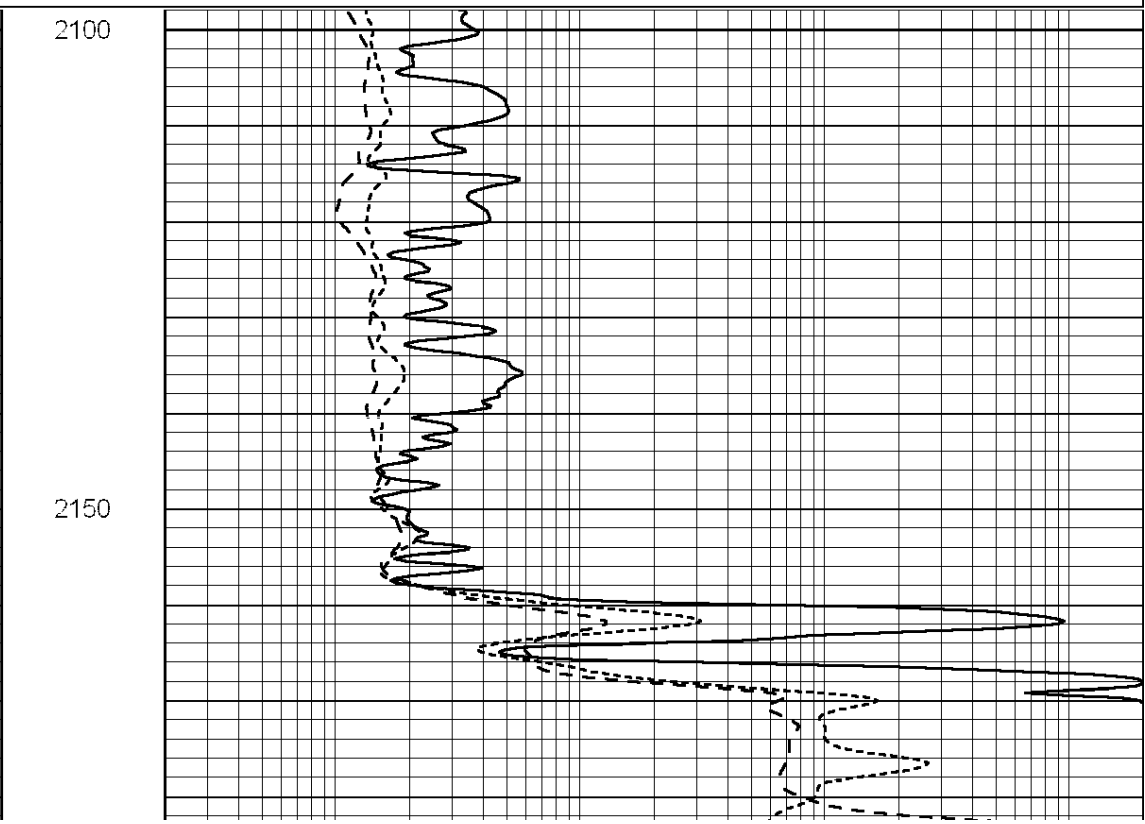
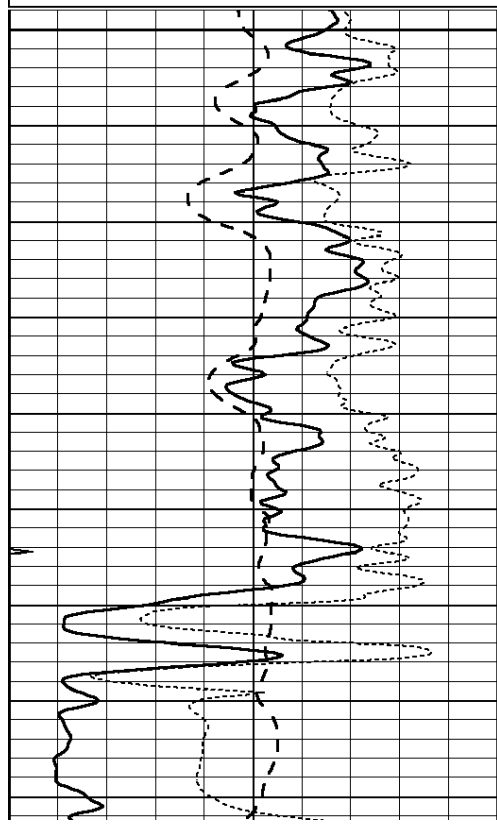
3800  
3850  
3900  
3950  
4000  
4050  
4100  
4150  
4200  
4250  
4300

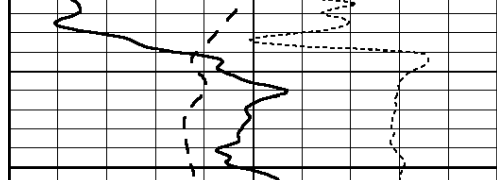




Database File: 008726ddn.db  
 Dataset Pathname: pass3.8  
 Presentation Format: dil  
 Dataset Creation: Thu Apr 26 06:57:17 2012 by Calc Open-Cased 090629  
 Charted by: Depth in Feet scaled 1:240

0	GAMMA RAY (GAPI)	150	0.2	RLL3 (Ohm-m)	2000
-100	SP (mV)	100	0.2	DEEP INDUCTION (Ohm-m)	2000
-250	RxoRt	50	0.2	MEDIUM INDUCTION (Ohm-m)	2000
0	MINMK	20			





2200

0	GAMMA RAY (GAPI)	150
-100	SP (mV)	100
-250	RxoRt	50
0	MINMK	20

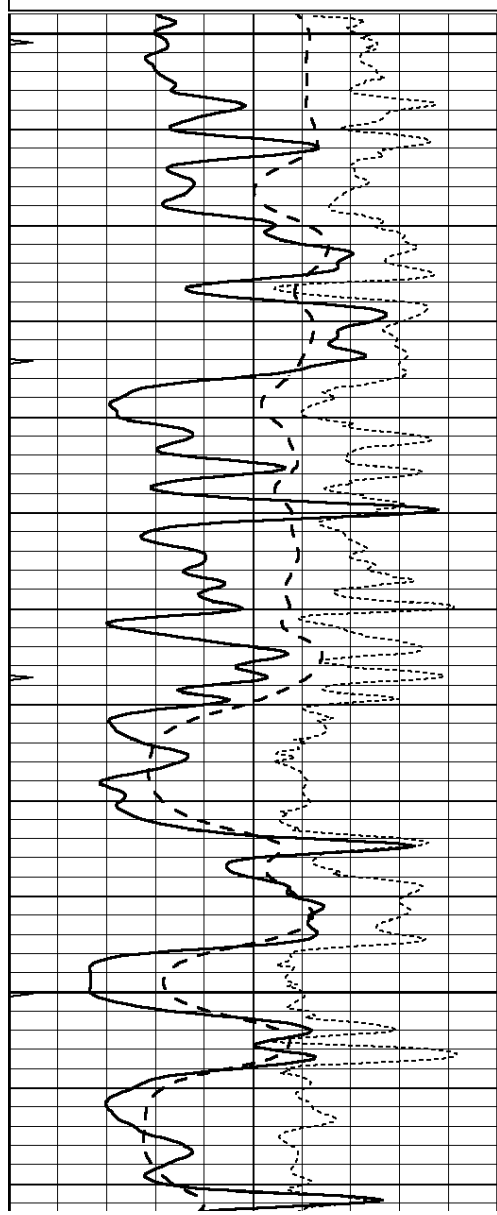


0.2	RLL3 (Ohm-m)	2000
0.2	DEEP INDUCTION (Ohm-m)	2000
0.2	MEDIUM INDUCTION (Ohm-m)	2000

Database File: 008726ddn.db  
 Dataset Pathname: pass3.7  
 Presentation Format: dil  
 Dataset Creation: Thu Apr 26 05:38:22 2012 by Calc Open-Cased 090629  
 Charted by: Depth in Feet scaled 1:240

0	GAMMA RAY (GAPI)	150
-100	SP (mV)	100
-250	RxoRt	50
0	MINMK	20

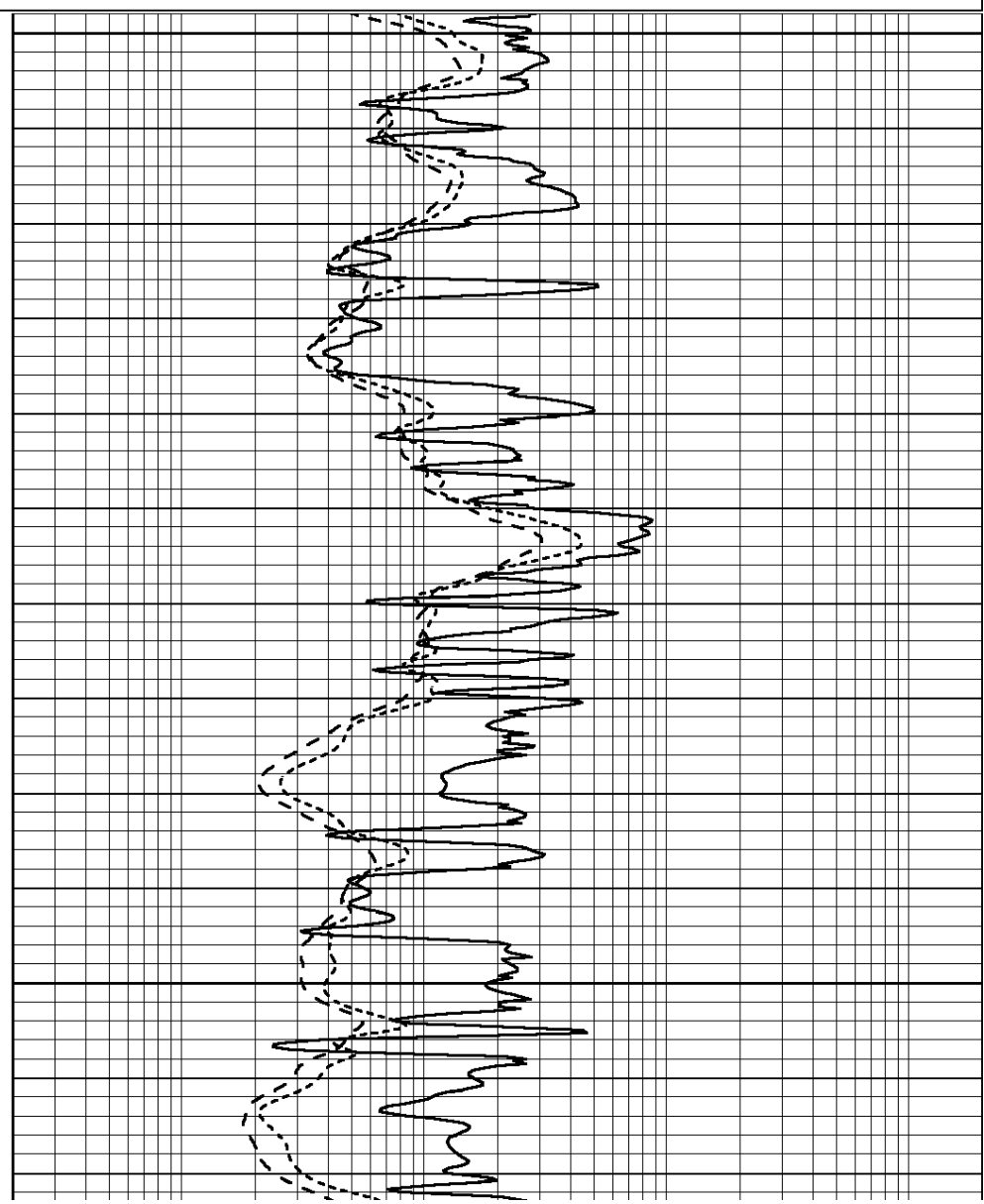
0.2	RLL3 (Ohm-m)	2000
0.2	DEEP INDUCTION (Ohm-m)	2000
0.2	MEDIUM INDUCTION (Ohm-m)	2000

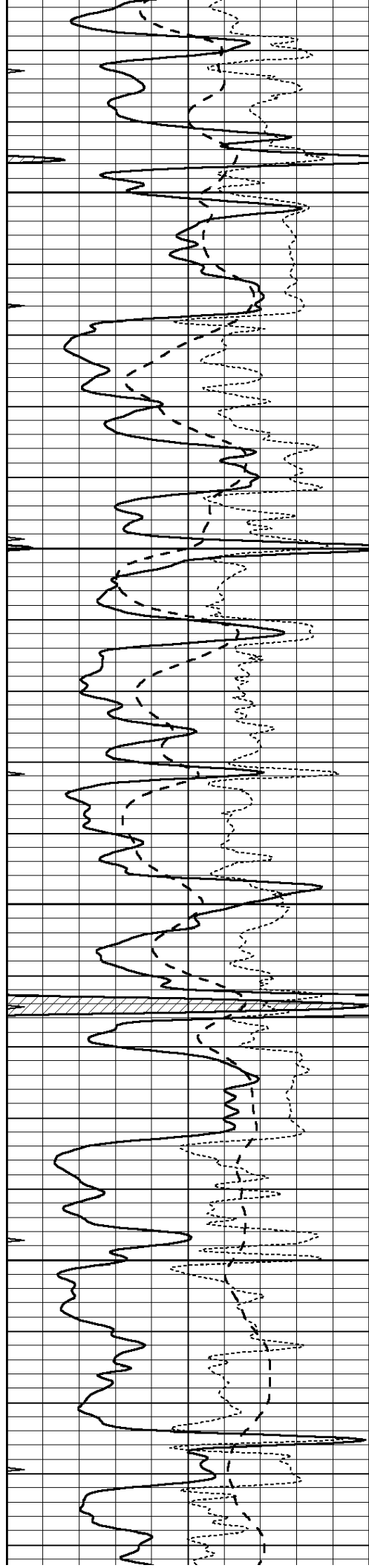


3500

3550

3600



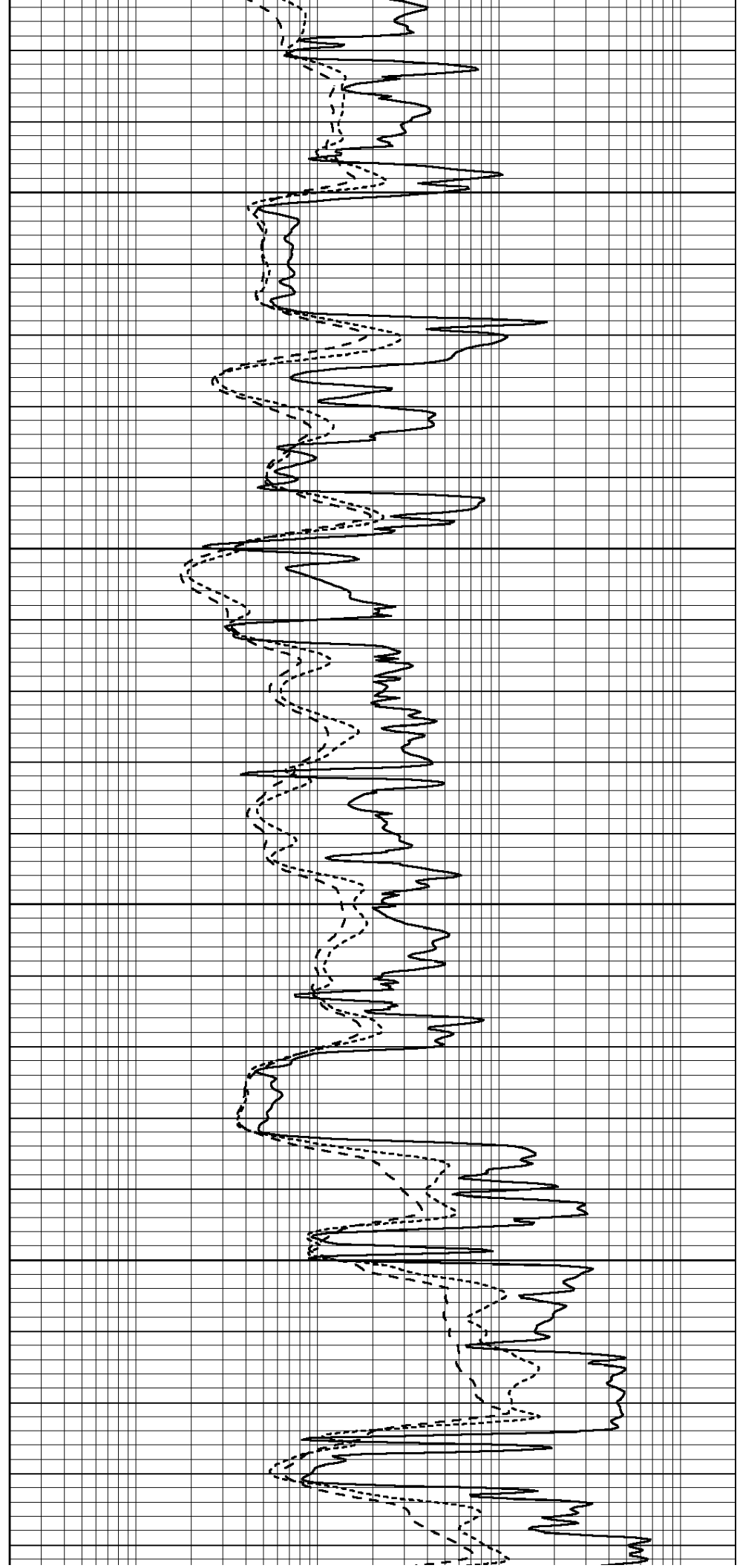


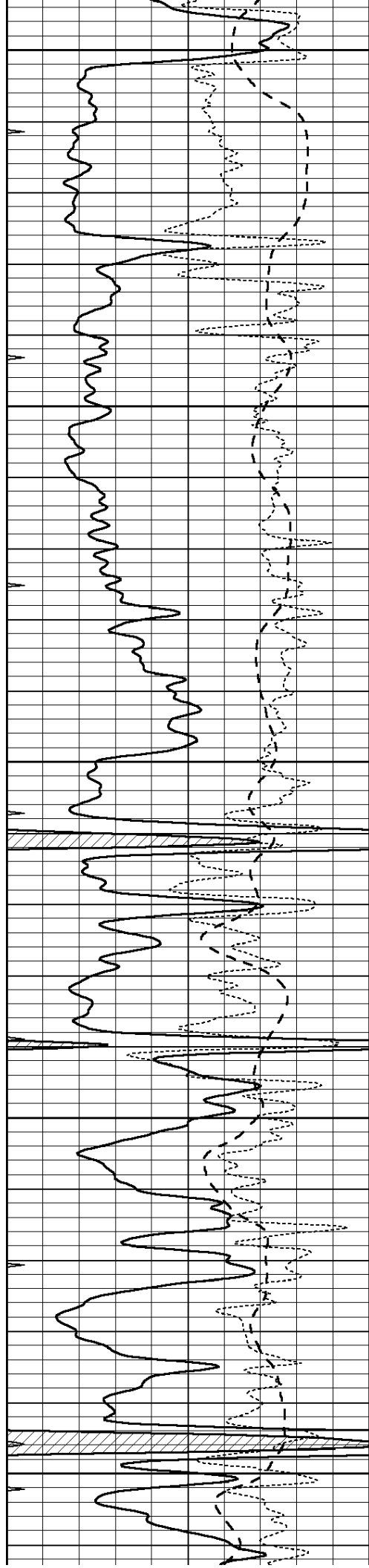
3650

3700

3750

3800





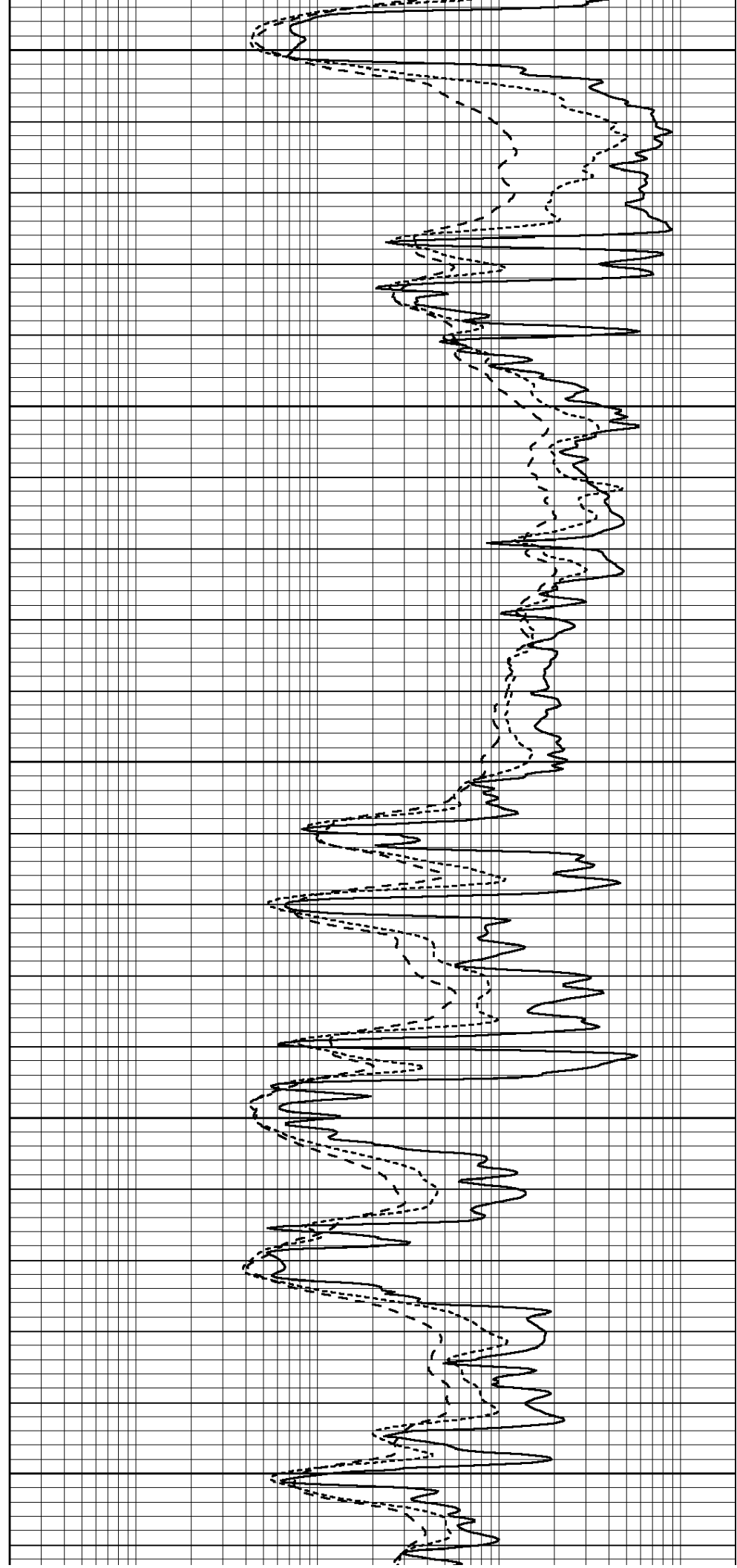
3850

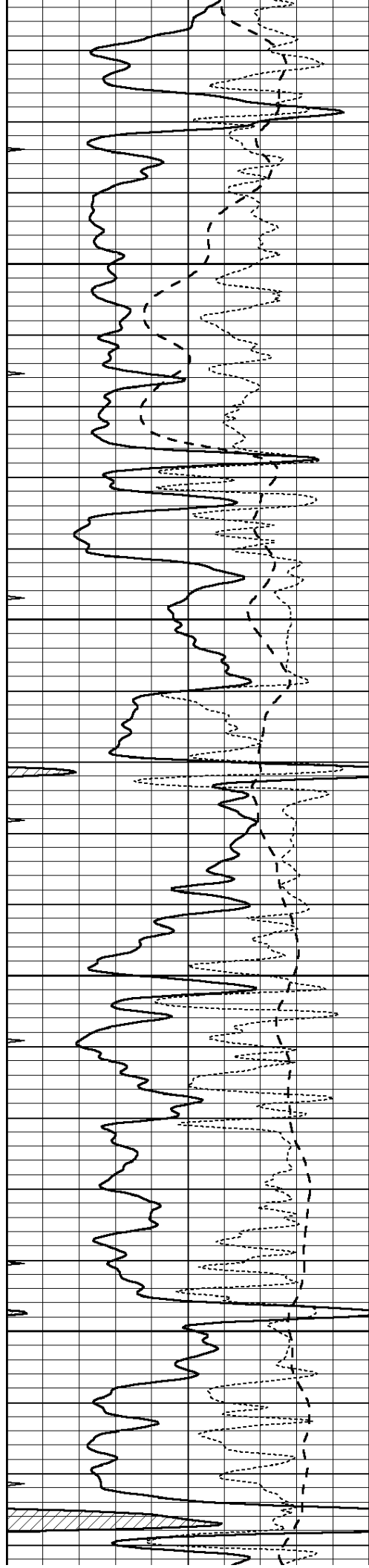
3900

3950

4000

4050



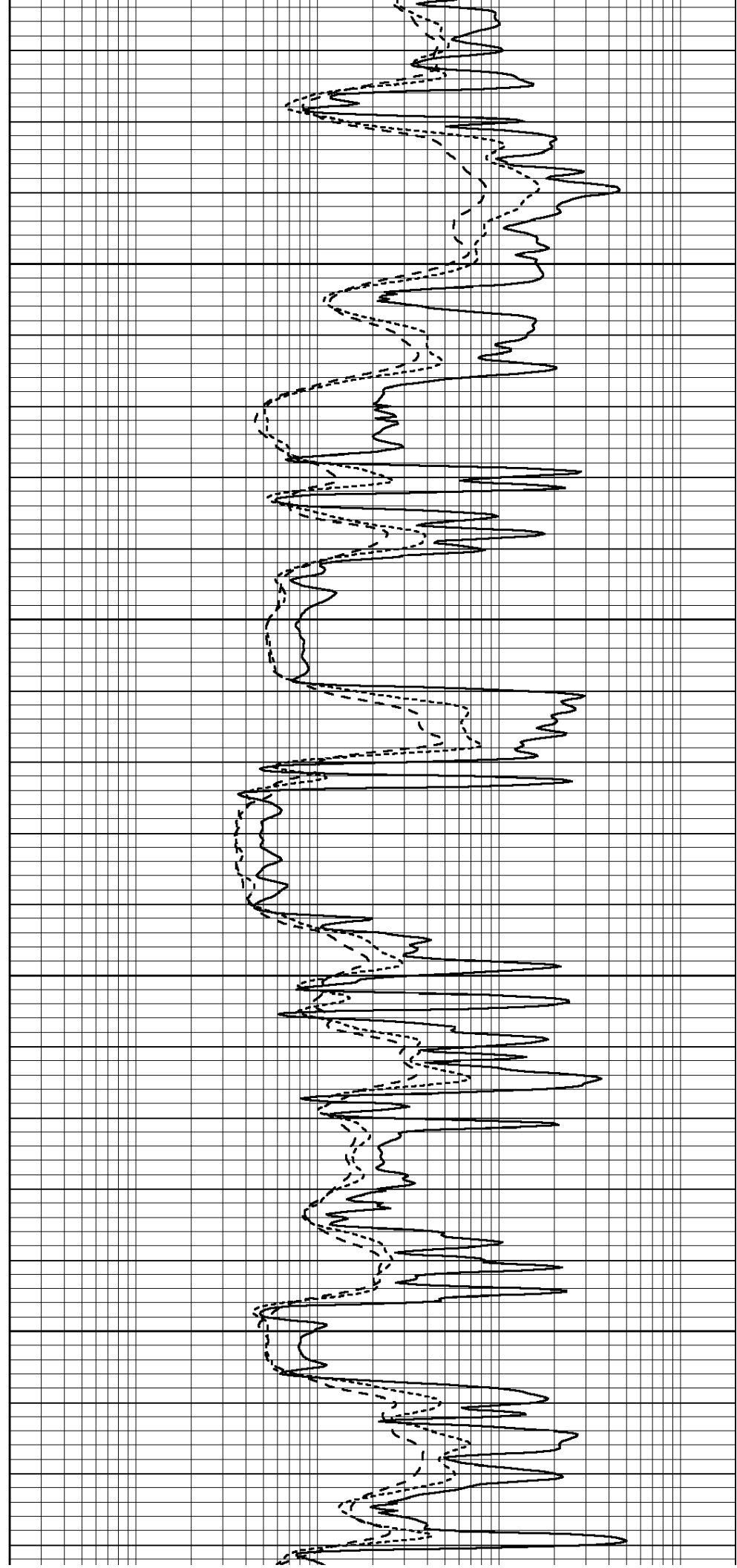


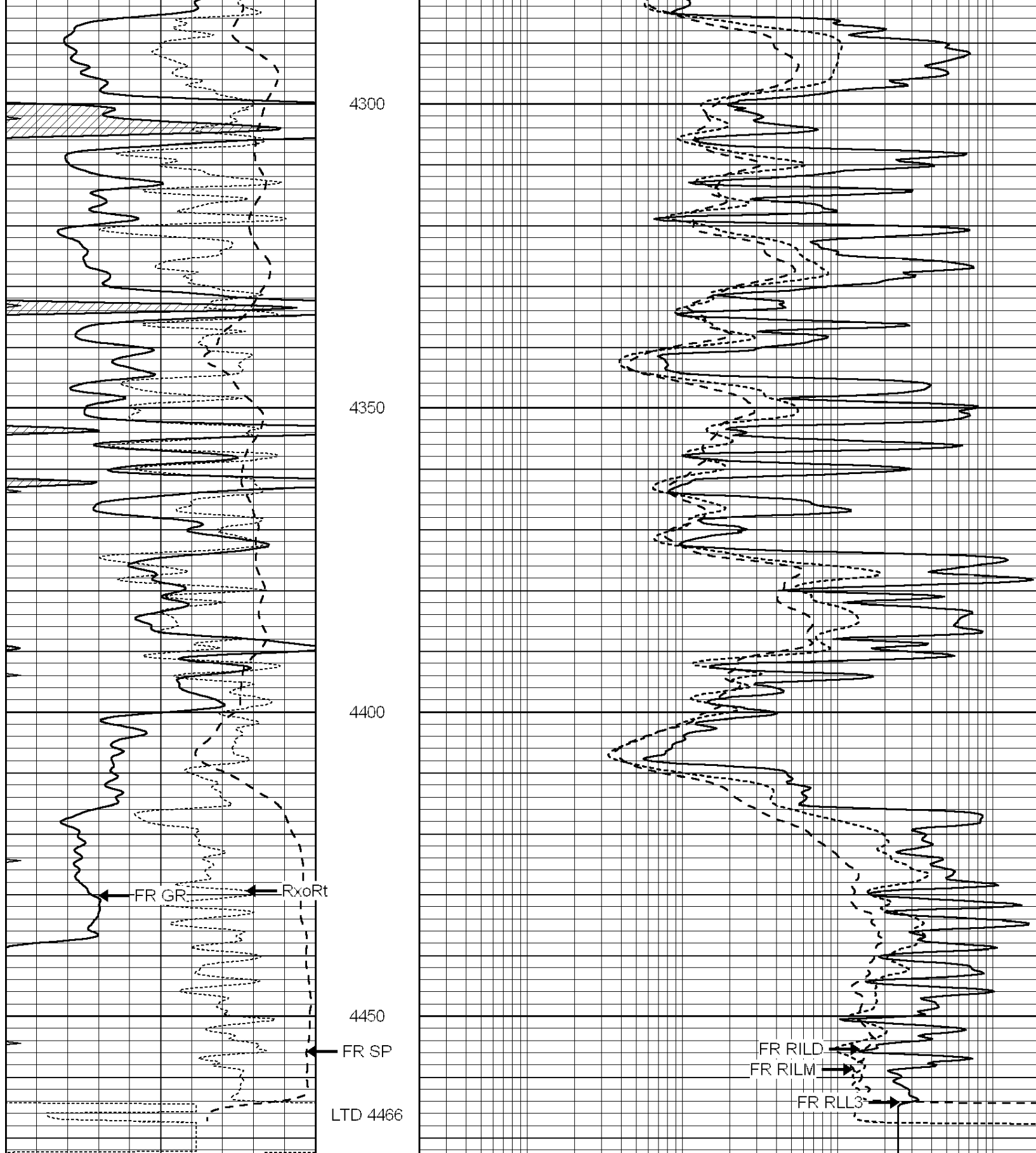
4100

4150

4200

4250





0	GAMMA RAY (GAPI)	150
-100	SP (mV)	100
-250	RxoRt	50
0	MINMK	20

0.2	RLL3 (Ohm-m)	2000
0.2	DEEP INDUCTION (Ohm-m)	2000
0.2	MEDIUM INDUCTION (Ohm-m)	2000



SUPERIOR

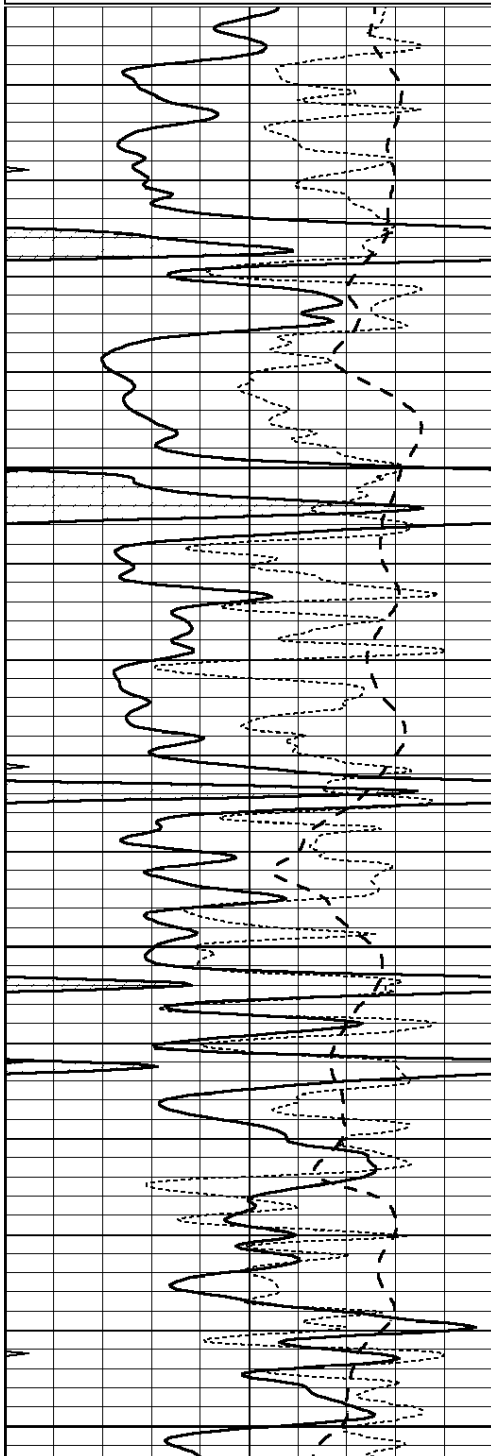
Hays,  
Kansas

# REPEAT SECTION

Database File: 008726ddn.db  
 Dataset Pathname: pass2.2  
 Presentation Format: dil  
 Dataset Creation: Thu Apr 26 05:43:12 2012 by Calc Open-Cased 090629  
 Charted by: Depth in Feet scaled 1:240

0	GAMMA RAY (GAPI)	150
-100	SP (mV)	100
-250	RxoRt	50
0	MINMK	20

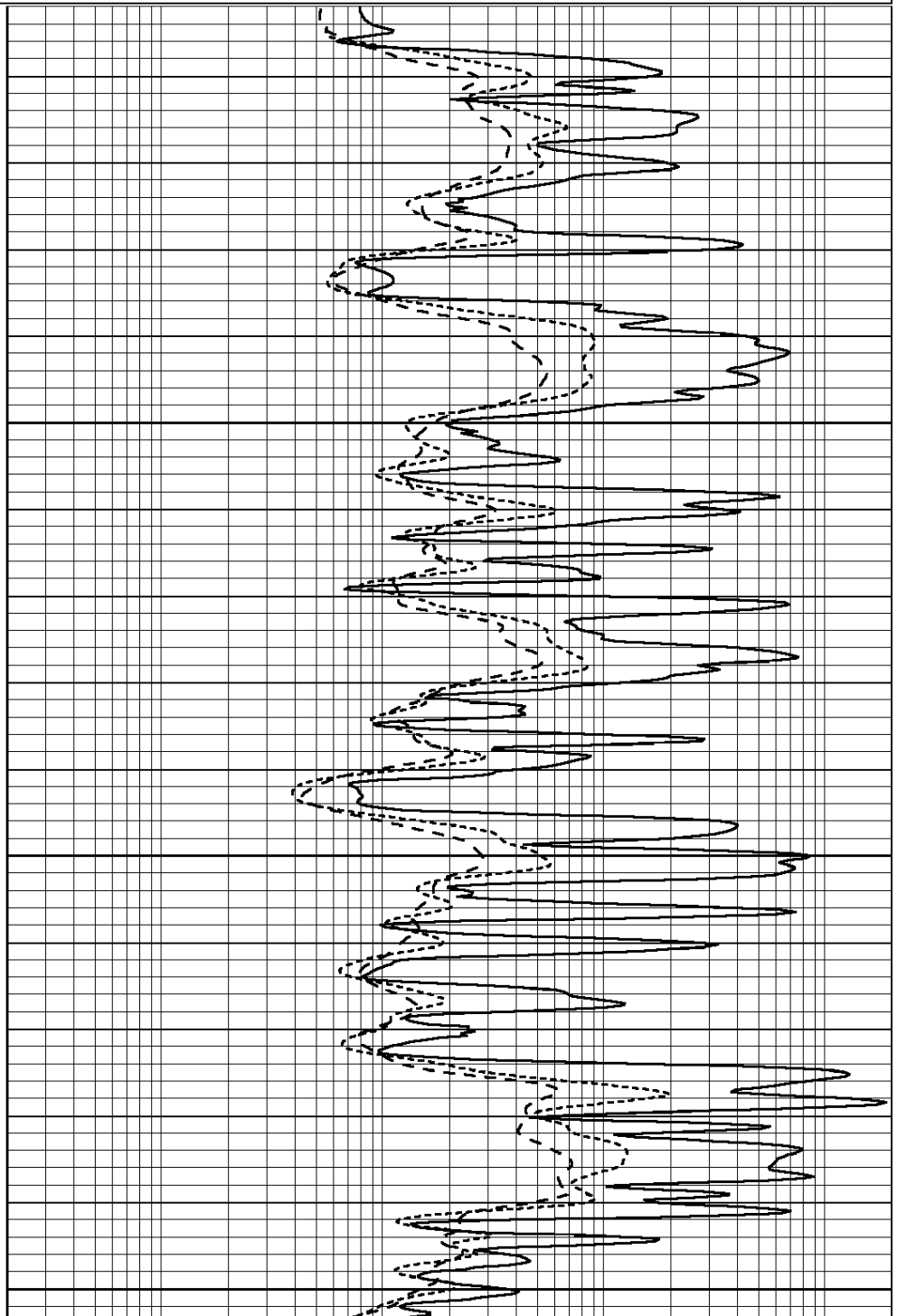
0.2	RLL3 (Ohm-m)	2000
0.2	DEEP INDUCTION (Ohm-m)	2000
0.2	MEDIUM INDUCTION (Ohm-m)	2000



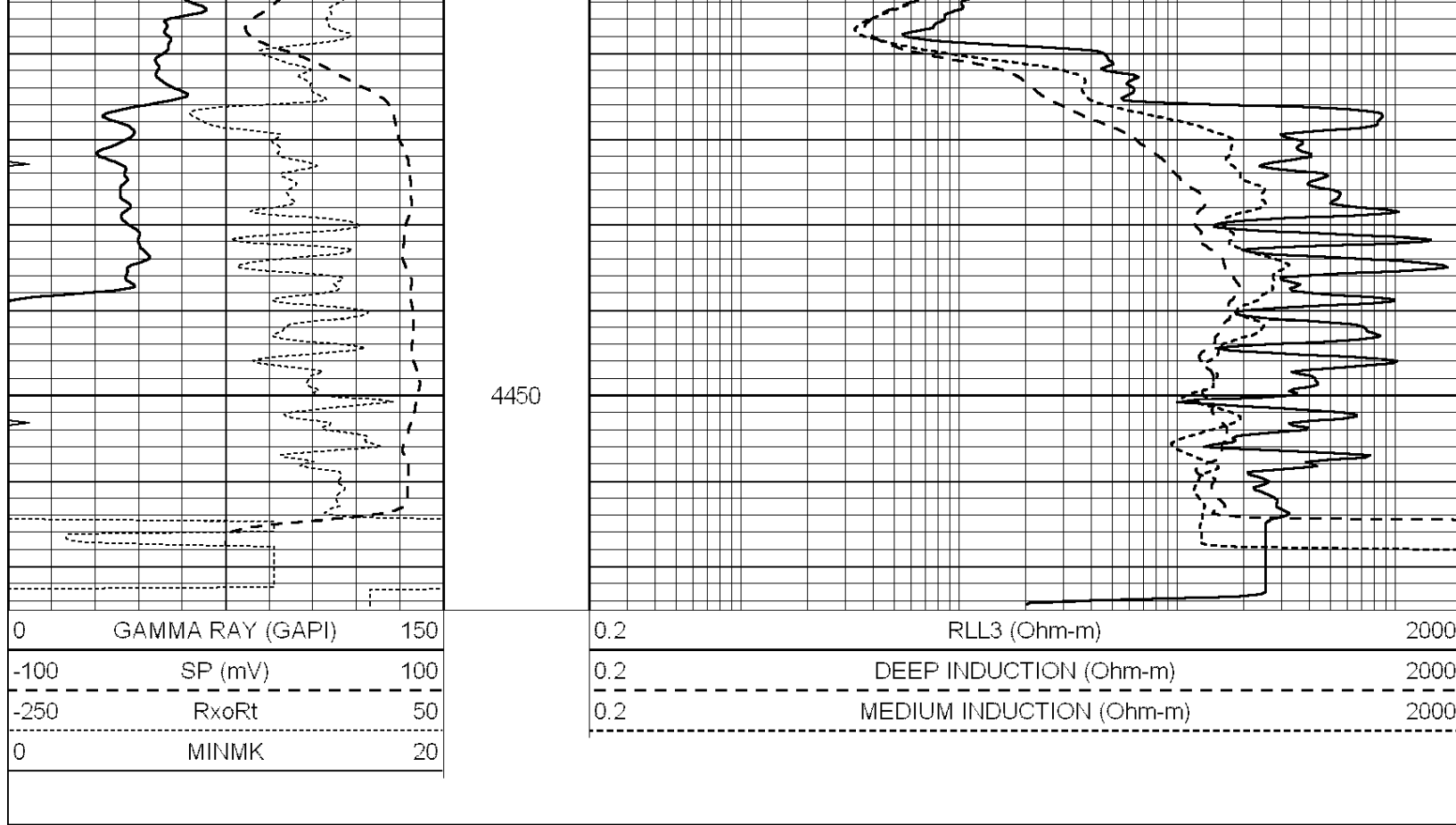
4300

4350

4400







### Calibration Report

Database File: 008726ddn.db  
 Dataset Pathname: pass3.8  
 Dataset Creation: Thu Apr 26 06:57:17 2012 by Calc Open-Cased 090629

### Dual Induction Calibration Report

Serial-Model: PROBE9-DILG  
 Surface Cal Performed: Sun Apr 22 06:58:49 2012  
 Downhole Cal Performed: Mon Jul 28 12:02:56 2008  
 After Survey Verification Performed: Mon Jul 28 12:02:56 2008

#### Surface Calibration

Loop:	Readings			References			Results	
	Air	Loop	V	Air	Loop	mmho/m	m	b
Deep	-0.014	0.629	V	0.000	400.000	mmho/m	550.000	-15.000
Medium	0.039	0.728	V	0.000	464.000	mmho/m	540.000	-18.000
Internal:	Zero	Cal	V	Zero	Cal	mmho/m	m	b
Deep	0.011	0.610	V	0.000	400.000	mmho/m	667.135	-7.256
Medium	0.005	0.712	V	0.000	464.000	mmho/m	655.677	-3.102

#### Downhole Calibration

	Readings			References			Results	
	Zero	Cal	V	Zero	Cal	mmho/m	m'	b'
Deep	0.000	0.000	V	14.508	388.384	mmho/m	1.000	0.000
Medium	0.000	0.000	V	166.367	504.400	mmho/m	1.000	0.000
LL3		7.500	V		1400.000	Ohm-m		
		0.000	V		20.000	Ohm-m		
		-7.200	V		3970.000	mmho-m		

After Survey Verification

	Readings			Targets			Results	
	Zero	Cal		Zero	Cal		m'	b'
Deep	0.000	0.000	mmho/m	0.000	0.000	mmho/m	0.000	0.000
Medium	0.000	0.000	mmho/m	0.000	0.000	mmho/m	0.000	0.000
LL3		1.000	Ohm-m		1.000	Ohm-m		
		0.000	Ohm-m		0.000	Ohm-m		
		1.000	mmho-m		1.000	mmho-m		

Compensated Density Calibration Report

Serial-Model: GEAR1-GEARHART  
Source / Verifier: 147 / 147  
Master Calibration Performed: Thu Apr 19 16:32:51 2012

Master Calibration

	Density		Far Detector	Near Detector	
Magnesium	1.710	g/cc	1243.76	629.14	cps
Aluminum	2.580	g/cc	282.16	435.01	cps
Spine Angle = 76.03			Density/Spine Ratio = 0.569		
	Size		Reading		
Small Ring	9.70	in	3.50	V	
Large Ring	16.00	in	5.30	V	

Compensated Neutron Calibration Report

Serial Number: NUE\_2I  
Tool Model: G

CALIBRATION

Detector	Readings		Target		Normalization
Short Space	1.00	cps	1.00	cps	1.0000
Long Space	1.00	cps	1.00	cps	1.0000

Gamma Ray Calibration Report

Serial Number: GR5  
Tool Model: OPEN  
Performed: Sun Apr 22 06:58:16 2012

Calibrator Value: 1.0 GAPI

Background Reading: 0.0 cps  
Calibrator Reading: 1.0 cps

Sensitivity: 0.7000 GAPI/cps