



Pioneer Energy Services

Microresistivity Log

15-051-26,433-00-00

API No.

Company **Zinszer Oil Company, Inc.**

Well **Armbruster No. 1**

Field

County

Eliis

State

Kansas

Location

**SW NE NW NE
590' FNL & 1,961' FEL**

Other Services
RAG

Sec: **2**

Twp: **15S**

Rge: **20W**

Permanent Datum **Ground Level** Elevation **2053**
 Log Measured From **Kelly Bushing** 8 Ft. Above Perm. Datum
 Drilling Measured From **Kelly Bushing**

Elevation

**K.B. 2061
D.F. 2053
G.L. 2053**

Date

11/28/2012

Run Number

TW0

Depth Driller

3692

Depth Logger

3691

Bottom Logged Interval

3690

Top Log Interval

3000

Casing Driller

8.625 @ 1317

Casing Logger

1313

Bit Size

7.875

Type Fluid in Hole

Chemical

Salinity, ppm CL

4000

Density / Viscosity

9.0 53

pH / Fluid Loss

10.0 8.8

Source of Sample

Flowline

Rm @ Meas. Temp

.50 @ 69

Rmf @ Meas. Temp

.38 @ 69

Rmc @ Meas. Temp

.68 @ 69

Source of Rmf / Rmc

Charts

Rm @ BHT

.31 @ 113

Operating Rig Time

4 Hours

Max Rec. Temp. F

113

Equipment Number

108

Location

Hays

Recorded By

J. Long

Witnessed By

Bob Hopkins

Perry Henman

<<< Fold Here >>>

All interpretations are opinions based on inferences from electrical or other measurements and we cannot and do not guarantee the accuracy or correctness of any interpretation, and we shall not, except in the case of gross or willful negligence on our part, be liable or responsible for any loss, costs, damages, or expenses incurred or sustained by anyone resulting from any interpretation made by any of our officers, agents or employees. These interpretations are also subject to our general terms and conditions set out in our current Price Schedule.

Comments

Thank you for using Pioneer Energy Services
www.pioneerenergy.com
 785 625 3858

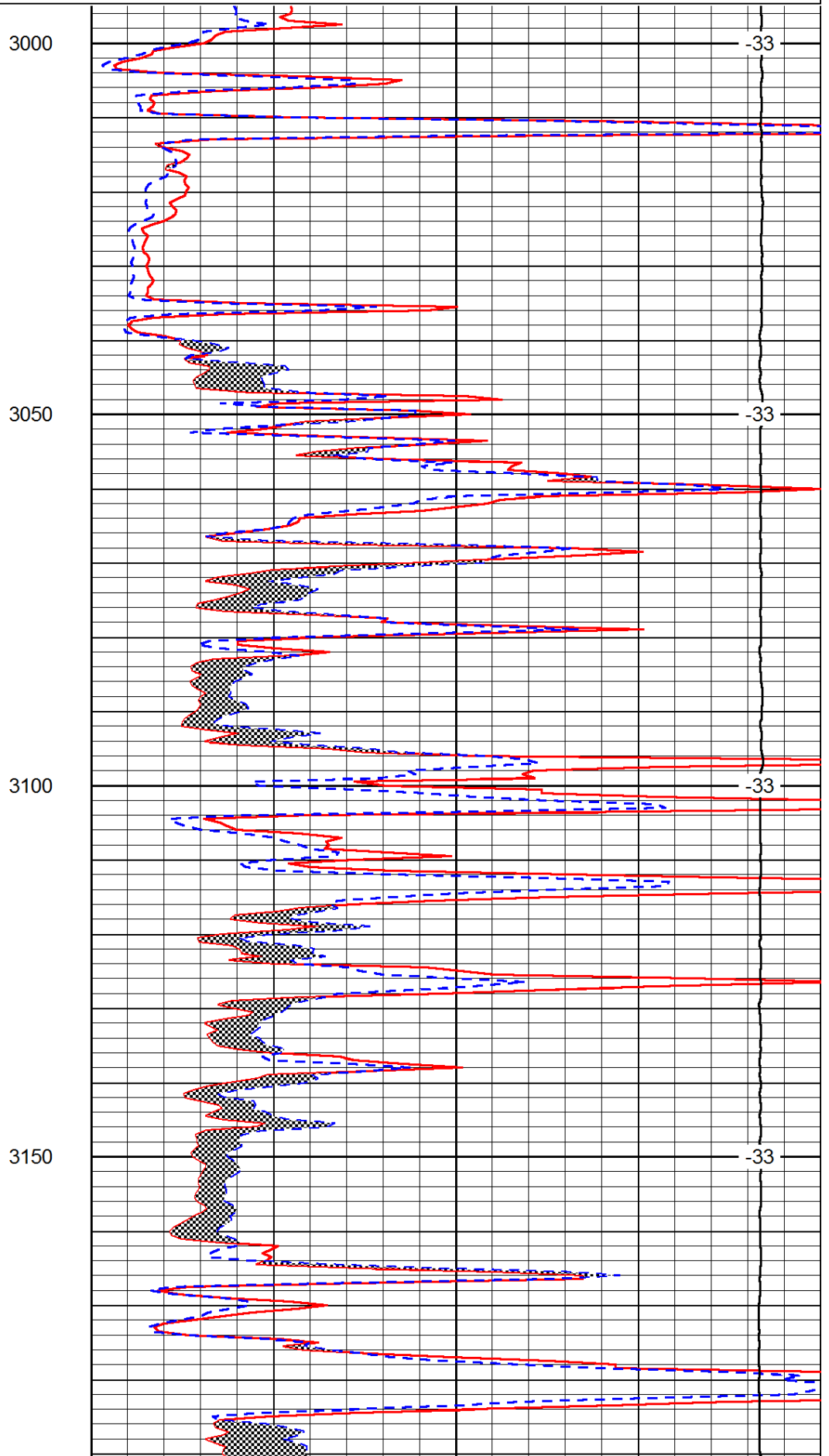
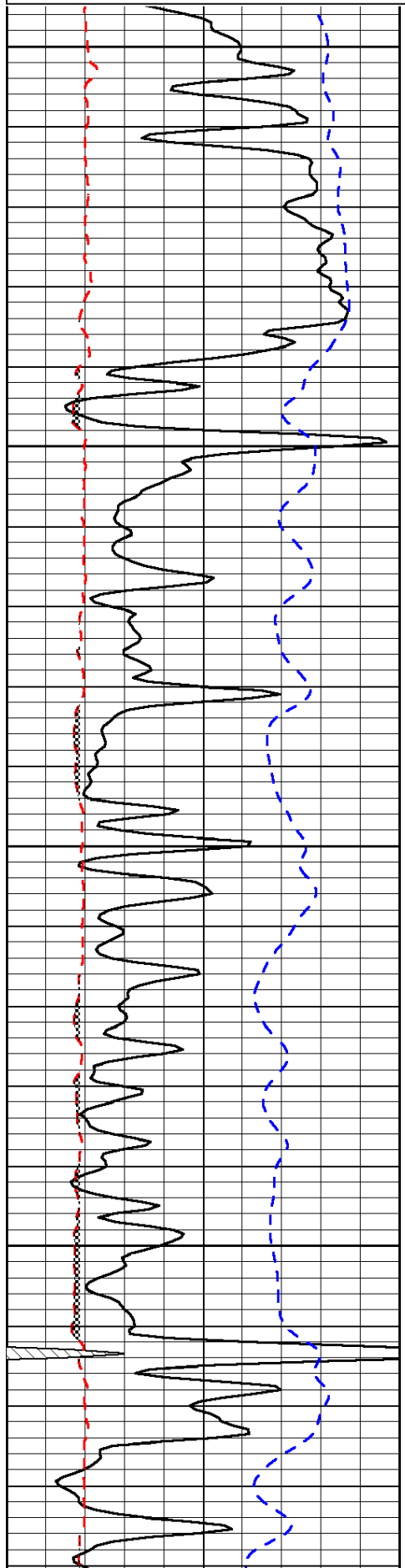
Antonino, 6 1/2 West, South Into

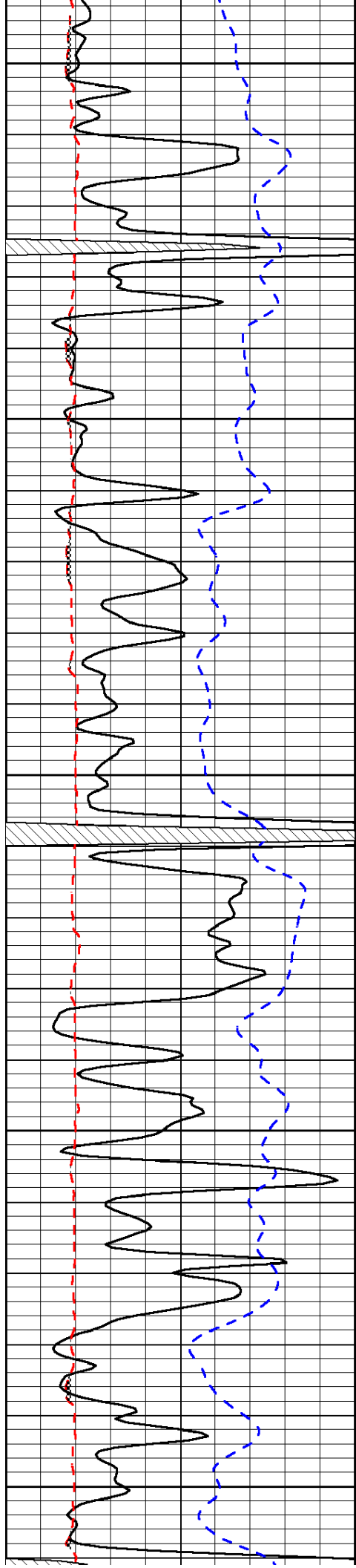
Database File: c:\warrior\data\zinszer_armbruster #1\zinszer_armbruster_1hd.db
 Dataset Pathname: rag/zinrag
 Presentation Format: micro
 Dataset Creation: Wed Nov 28 18:27:15 2012
 Charted by: Depth in Feet scaled 1:240

0	Gamma Ray	150
6	Micro Log Caliper (GAPI)	16
-200	SP (mV)	0

0	Micro Inverse 1 X 1	40
0	Micro Normal 2"	40
15000	Line Weight	0

LSPD





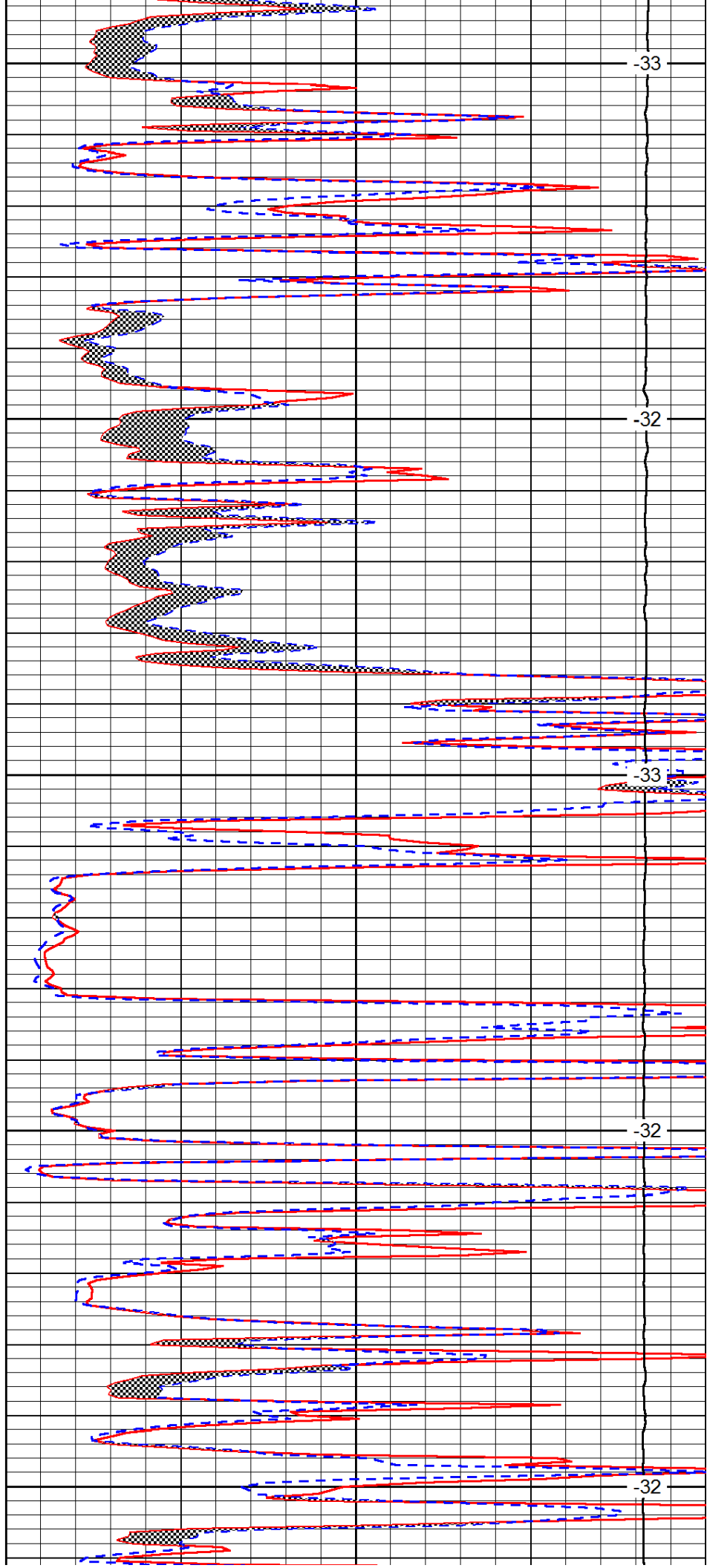
3200

3250

3300

3350

3400



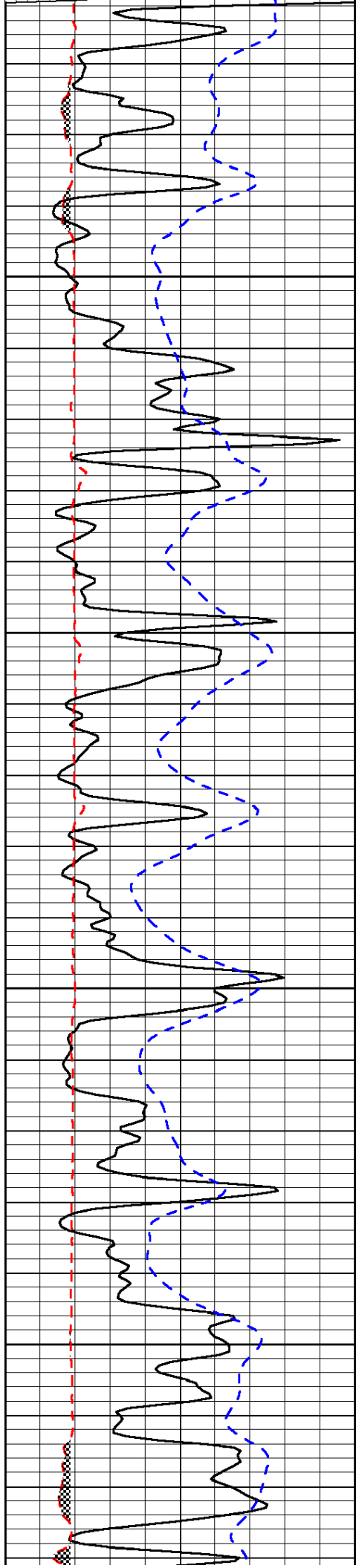
-33

-32

-33

-32

-32

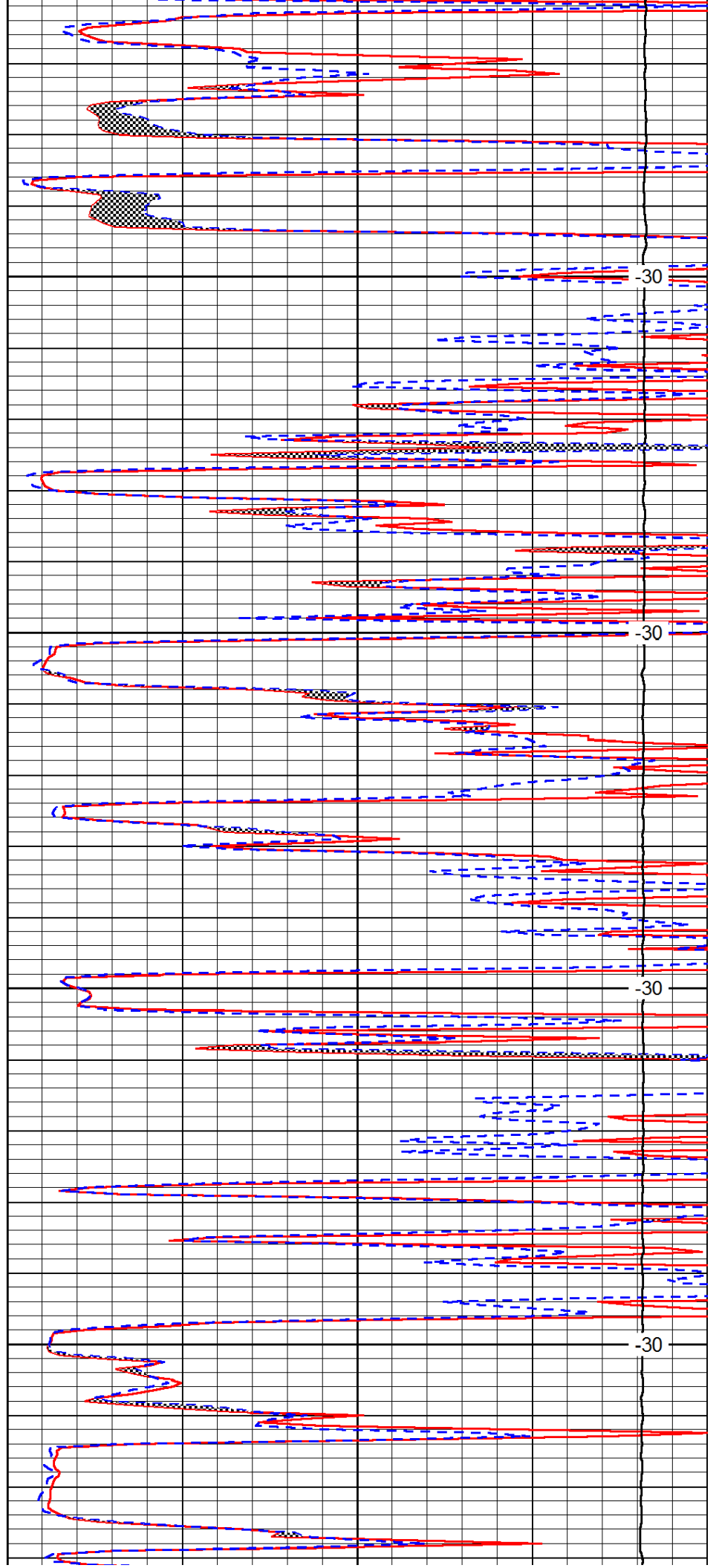


3450

3500

3550

3600

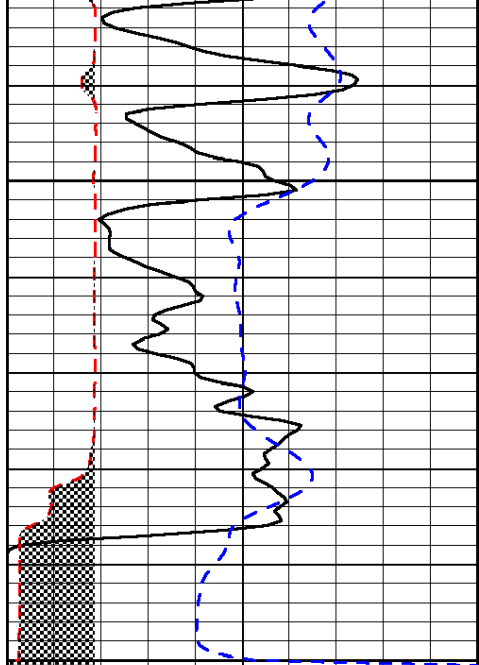


-30

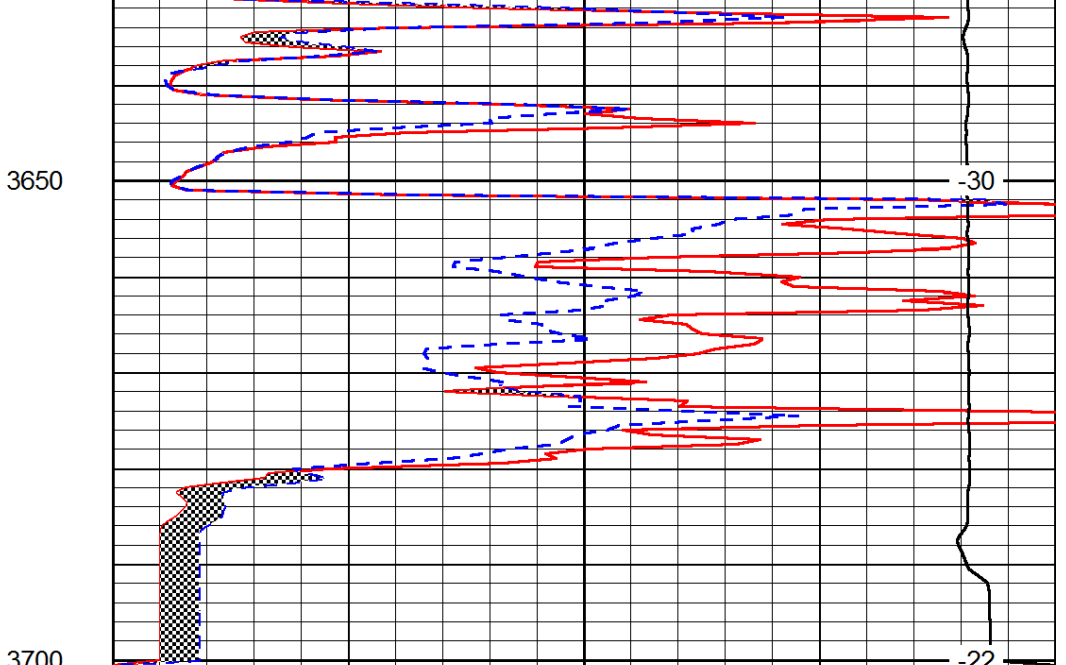
-30

-30

-30



0	Gamma Ray	150
6	Micro Log Caliper (GAPI)	16
-200	SP (mV)	0



0	Micro Inverse 1 X 1	40
0	Micro Normal 2"	40
15000	Line Weight	0

LSPD