



Sector Bond / Gamma Ray
CCL Log

Company: **Zinzer Oil Company Inc.**
Well: **Ambruster No. 1**
Field: **Ellis**
County: **Ellis**
State: **Kansas**

Location: **SW NE NW NE**
590 FN1 & 1961 FEL
Other Services: **None**

APN No: 15-051-26433-00-00
Sec: 2
Twp: 15 S
Rge: 20 W
Elevation: 2081
K. E. 2081
Elevation: 2053
C.I. 2053

Permanent Datum: **Ground Level**
Log Measured From: **Kelly Bushing**
Drilling Measured From: **Kelly Bushing**
Run Number: **One**
Date Survey: **12/11/2012**

Type Cementing Operation: **Primary**
Depth Bitter: **3892**
Depth Logger: **3899**
Logging Interval: **3898 to 2400**
Logging Diller: **D.V. Tool**
Specialty Depth: **3/3 @ 10'**

Amount & Type Cement: **Water**
Fluid Level: **360**

Weight lb/gal -- Vis: **25.10**
Approx. Logged Cement op: **113**
Calculated Cement Top: **113**
Max Hole Temperature: **FR71**
Tool No: **FR71**
Shafting Recorded: **3.5'**
Equipment -- Location: **71 Scott Cement**
Recorded by: **Scott Cement**
Witnessed by: **Ferry Herman**

TT3FT: 1200 (usec) 254
GR: 150
LTEN (lb): 3000

All interpretations are opinions based on inferences from electrical or other measurements and we cannot and do not guarantee the accuracy or correctness of any interpretation, and we shall not, except in the case of gross or willful negligence on our part, be liable or responsible for any loss, costs, damages, or expenses incurred or sustained by anyone resulting from any interpretation made by any of our officers, agents or employees. These interpretations are also subject to our general terms and conditions set out in our current Price Schedule.

Comments: Thank you for using Pioneer Energy Services 785.625.3858
Antonino Ks. 6 1/2 West, South Into

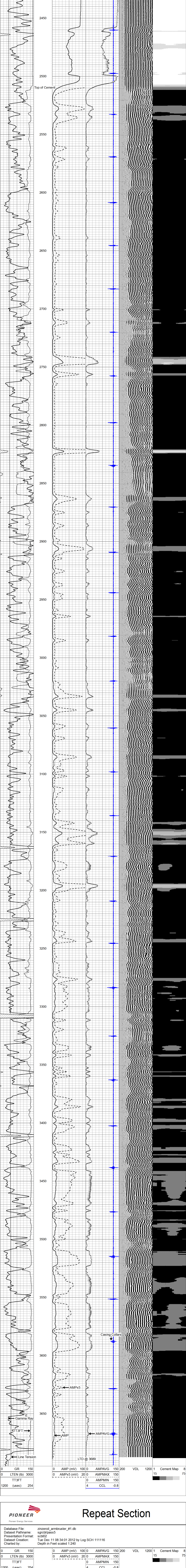
<<< Fold Here >>>

Database File: zinzzeroil_armbruster_#1.db
Dataset Pathname: sgrcb/pass6
Presentation Format: scb02
Dataset Creation: Tue Dec 11 08:39:50 2012 by Log SCH 111116
Charted by: Depth in Feet scaled 1:240

0 GR 150
0 LTEN (lb) 3000
TT3FT 1200 (usec) 254

0 AMP (mV) 100
0 AMPx5 (mV) 20
0 AMPAVG 150
0 AMPMAX 150
0 AMPMIN 150
4 CCL -0.8

VDL 1200
1 Cement Map 8
15 75



0 GR 150
0 LTEN (lb) 3000
TT3FT 1200 (usec) 254

0 AMP (mV) 100
0 AMPx5 (mV) 20
0 AMPAVG 150
0 AMPMAX 150
0 AMPMIN 150
4 CCL -0.8

VDL 1200
1 Cement Map 8
15 75

Database File: zinzzeroil_armbruster_#1.db
Dataset Pathname: sgrcb/pass5
Presentation Format: scb02
Dataset Creation: Tue Dec 11 08:34:01 2012 by Log SCH 111116
Charted by: Depth in Feet scaled 1:240

0 GR 150
0 LTEN (lb) 3000
TT3FT 1200 (usec) 254

0 AMP (mV) 100
0 AMPx5 (mV) 20
0 AMPAVG 150
0 AMPMAX 150
0 AMPMIN 150
4 CCL -0.8

VDL 1200
1 Cement Map 8
15 75

Database File: zinzzeroil_armbruster_#1.db
Dataset Pathname: sgrcb/pass5
Presentation Format: scb02
Dataset Creation: Tue Dec 11 08:34:01 2012 by Log SCH 111116
Charted by: Depth in Feet scaled 1:240

0 GR 150
0 LTEN (lb) 3000
TT3FT 1200 (usec) 254

0 AMP (mV) 100
0 AMPx5 (mV) 20
0 AMPAVG 150
0 AMPMAX 150
0 AMPMIN 150
4 CCL -0.8

VDL 1200
1 Cement Map 8
15 75