

Pioneer Energy Services

PIONEER



**RADIAL
SECTOR BOND LOG
WITH GAMMA RAY**

Company BEREXCO INC.

Well CUTTER KGS # 1
Field CUTTER
Parish STEVENS State KANSAS

Company **BEREXCO INC.**
Well **CUTTER KGS # 1**
Field **CUTTER**
Parish **STEVENS** State **KANSAS**

Location: [SHL] 2440' FNL & 1320' FEL
API # : 15-189-22781
SEC 1 TWP 31S RGE 35W
Permanent Datum G.L. Elevation 2926
Log Measured From K.B. 13'
Drilling Measured From K.B.
Other Services
K.B. 2939
D.F. ///
G.L. 2926

Date of Service	1-4-2013		
Run Number	ONE		
Depth Driller or PBTD	7735		
Depth Logger	7599		
Bottom Log Interval	7599		
Top Log Interval	0		
Open Hole Size	///		
Type Fluid	WATER		
Fluid Level	1000 PSI		
Fluid Density	///		
Max. Recorded Temperature	///		
Max. Wellhead Pressure	1000 PSI		
Wellhead Connection	///		
Estimated Cement Top			
Unit Number	L8		
Wireline Size	///		
Location	LIBERAL		
Recorded By	L. DUTY		
Witnessed By	KLAUS		
Tubing Record	Size	W/Ft	Top
Surface Casing			Bottom
Production Casing			
Liner Record			

<<< Fold Here >>>

All interpretations are opinions based on inferences from electrical or other measurements and Pioneer Wireline Services, LLC cannot and does not guarantee the accuracy or correctness of any interpretation, and Pioneer Wireline Services, LLC will not be liable or responsible for any loss, costs, damages, or expenses incurred or sustained by anyone resulting from any interpretation made by any of our officers, agents or employees.

Comments

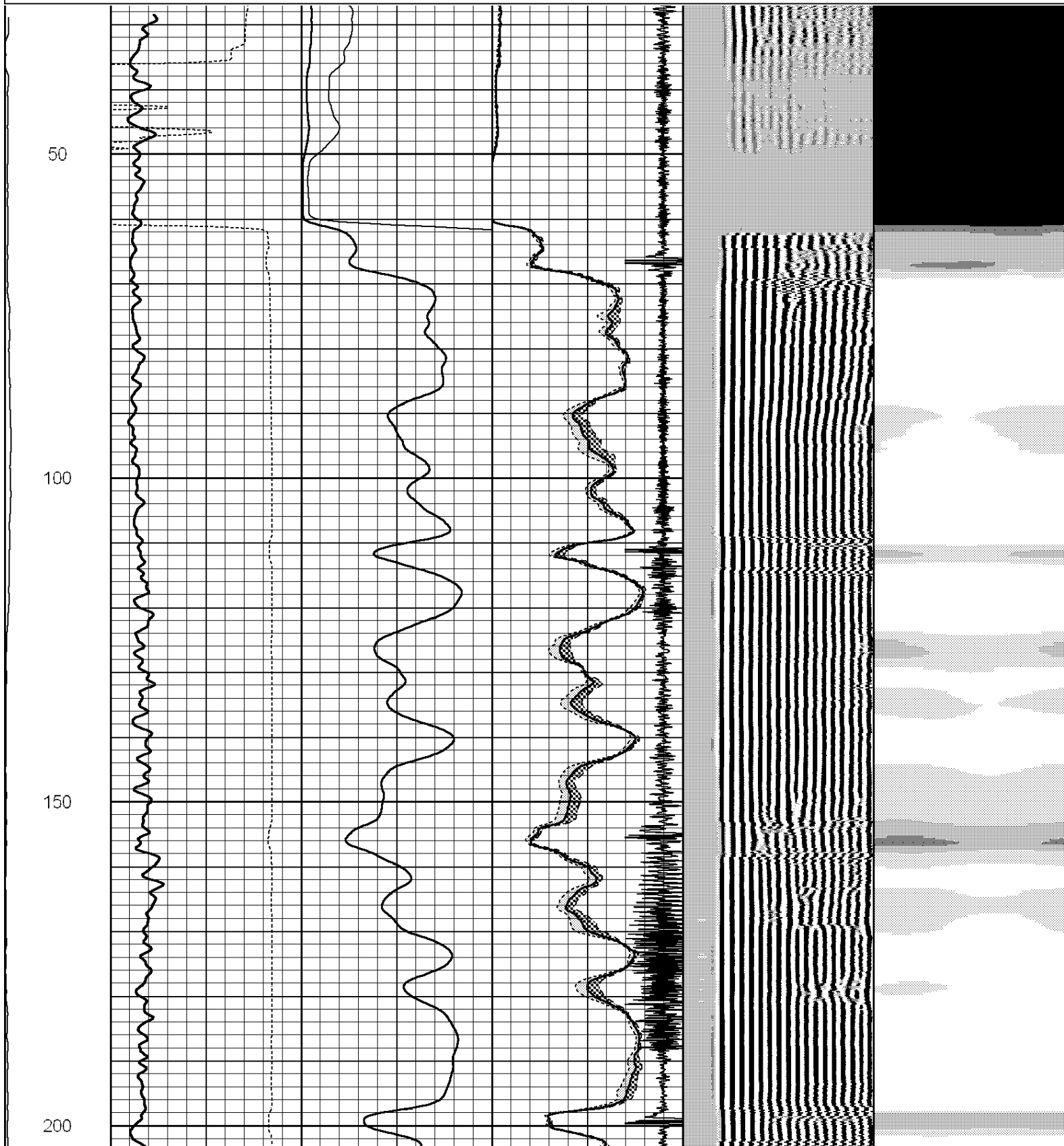
N/A DENOTES NOT AVAILABLE OR NON-APPLICABLE.
RESET +2' TO HLS CNL

THANK YOU FOR USING PIONEER Energy SERVICES

Your Pioneer Energy Services Crew	Tool Data - Services	Serial Number
Engineer: Operator: Operator: Operator:		

Database File: 37277.db
 Dataset Pathname: pass4
 Presentation Format: scbl
 Dataset Creation: Fri Jan 04 15:01:01 2013 by Log SCH 110630
 Charted by: Depth in Feet scaled 1:240

LTEN	700	TT (usec)	200	0	AMP (mV)	100	0	AMPAVG	150	200	VDL	1200	1	VAD	8
0 (lb)2000	0	GR	150	0	AMPx5 (mV)	20	0	AMPMAX	150						
	150	GR	300				0	AMPMIN	150						
							-9	CCL	1						

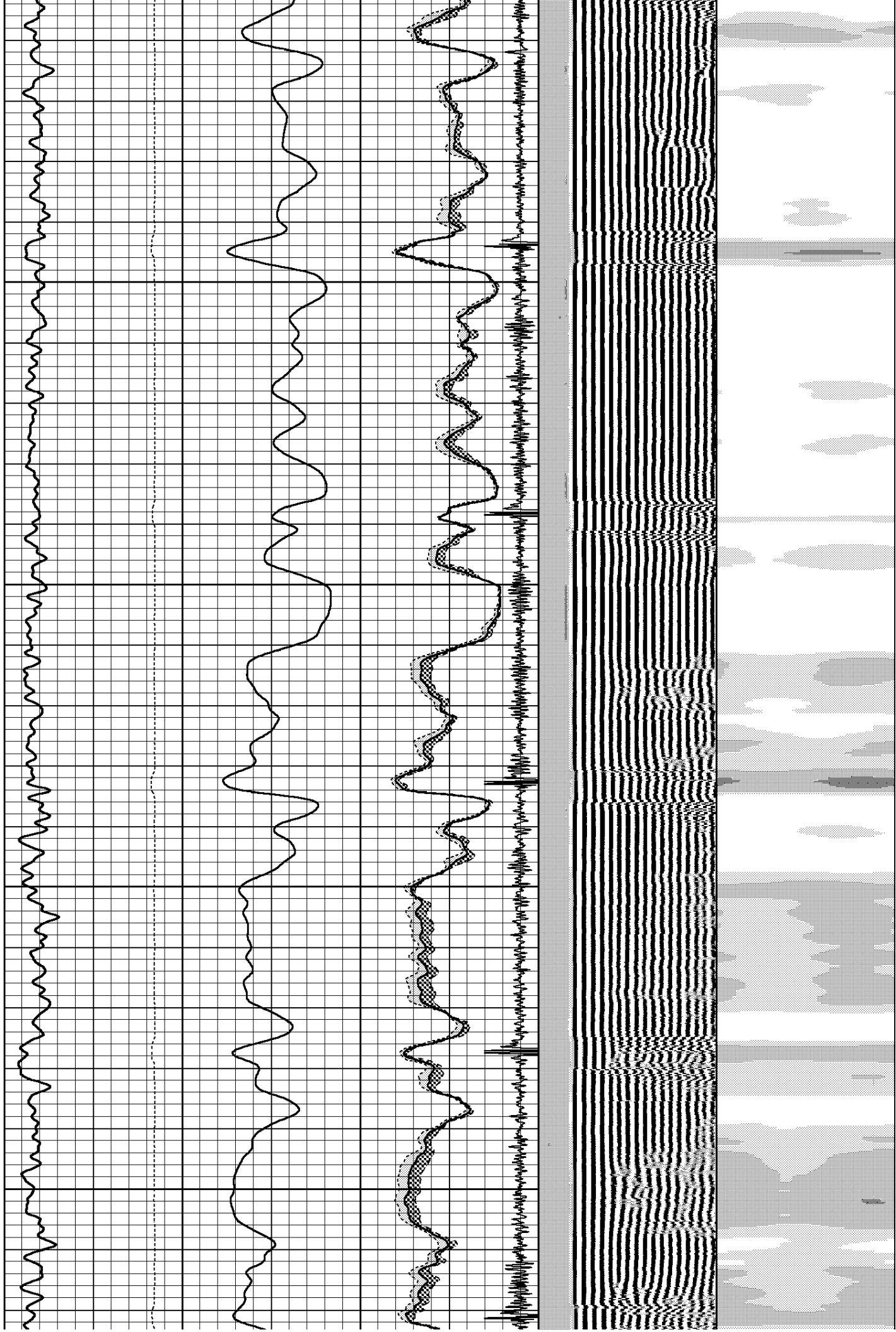


250

300

350

400

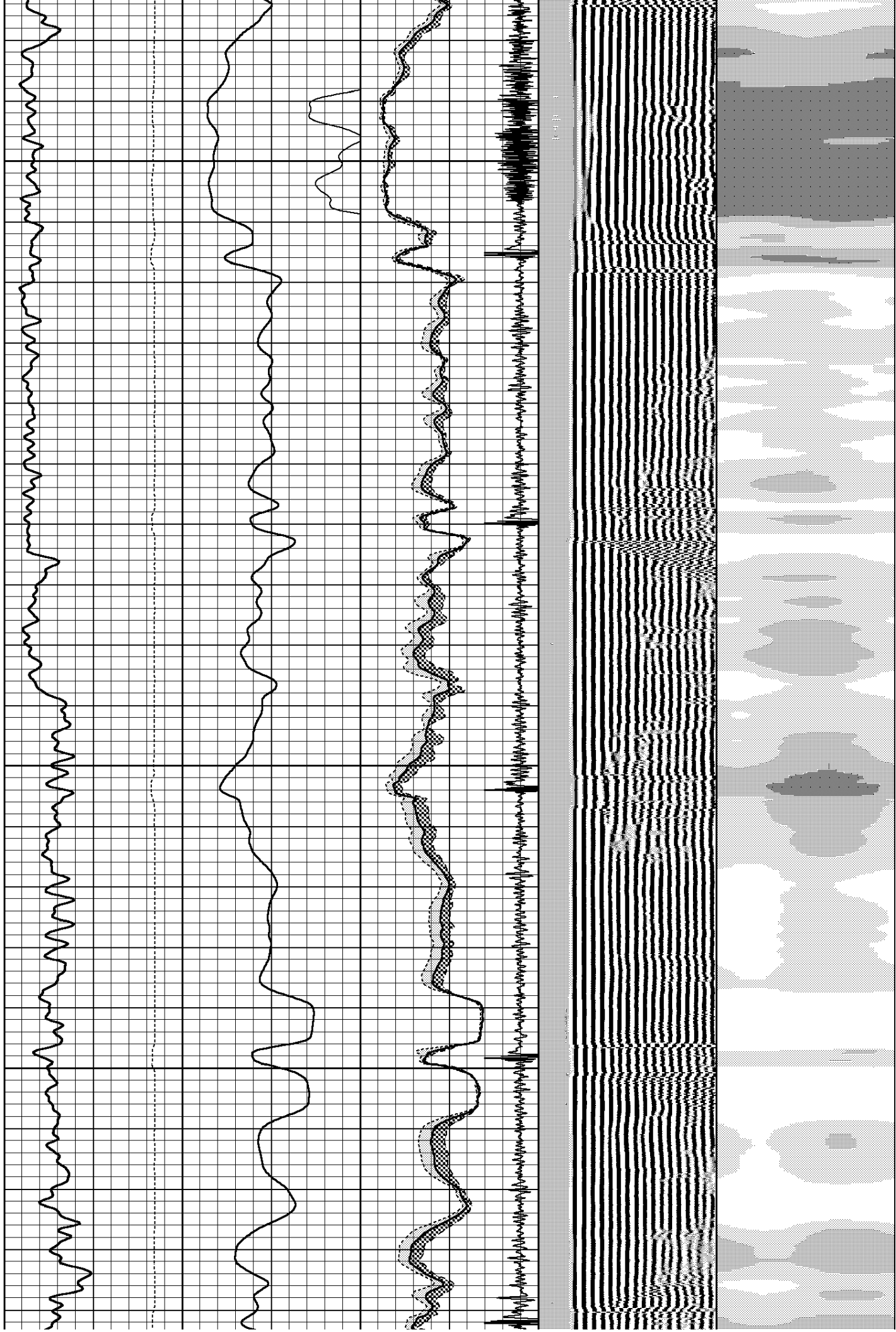


450

500

550

600



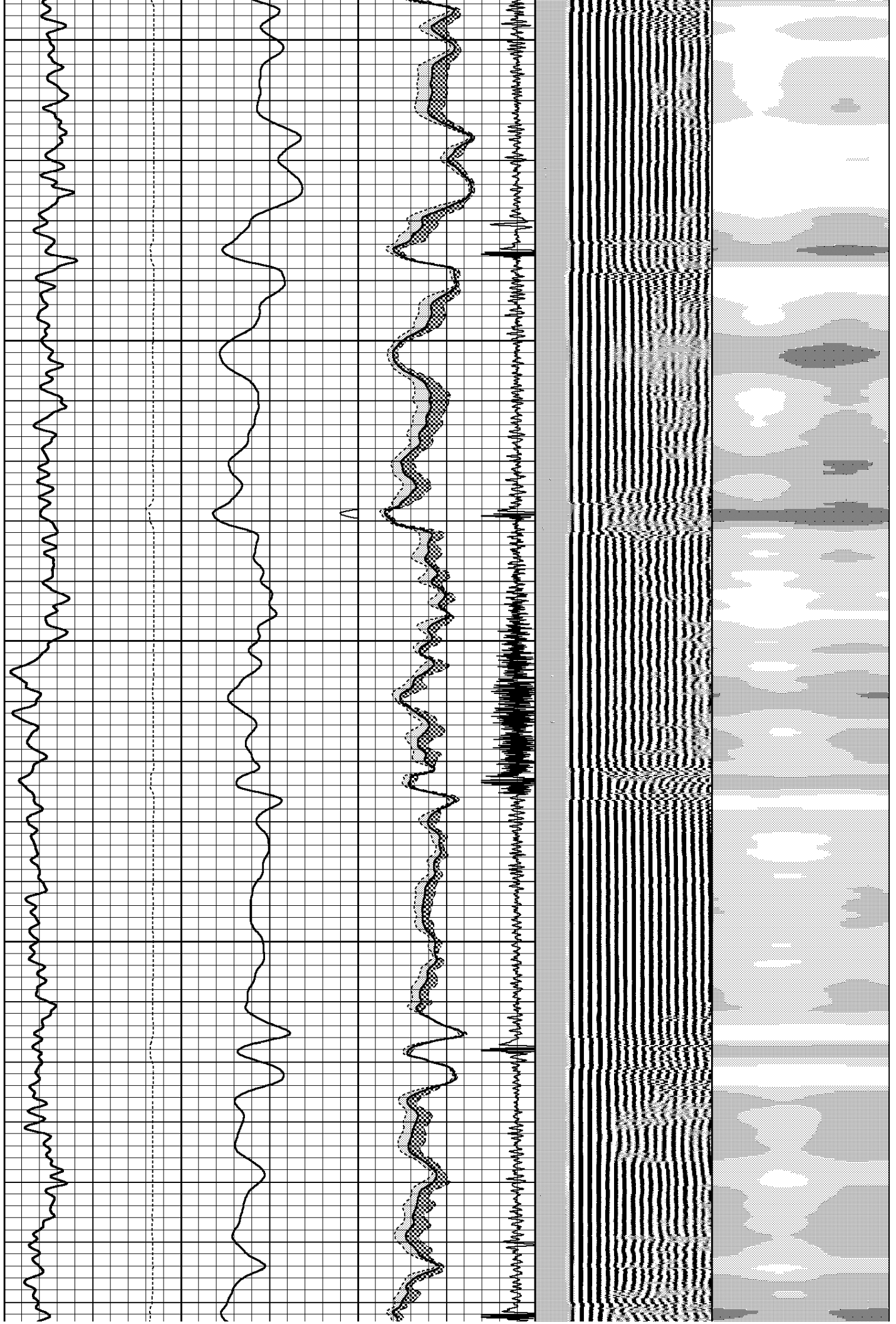
650

700

750

800

850

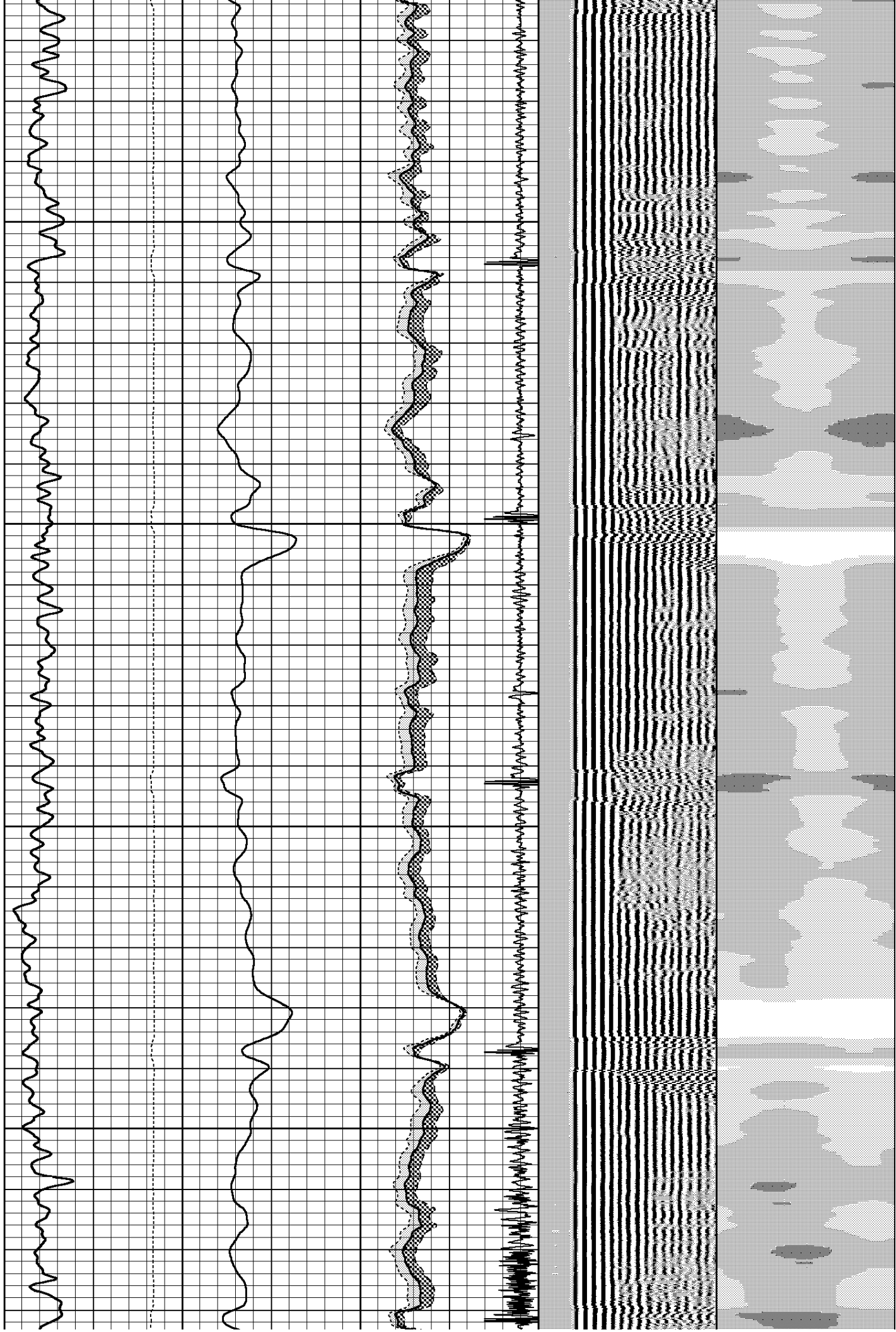


900

950

1000

1050



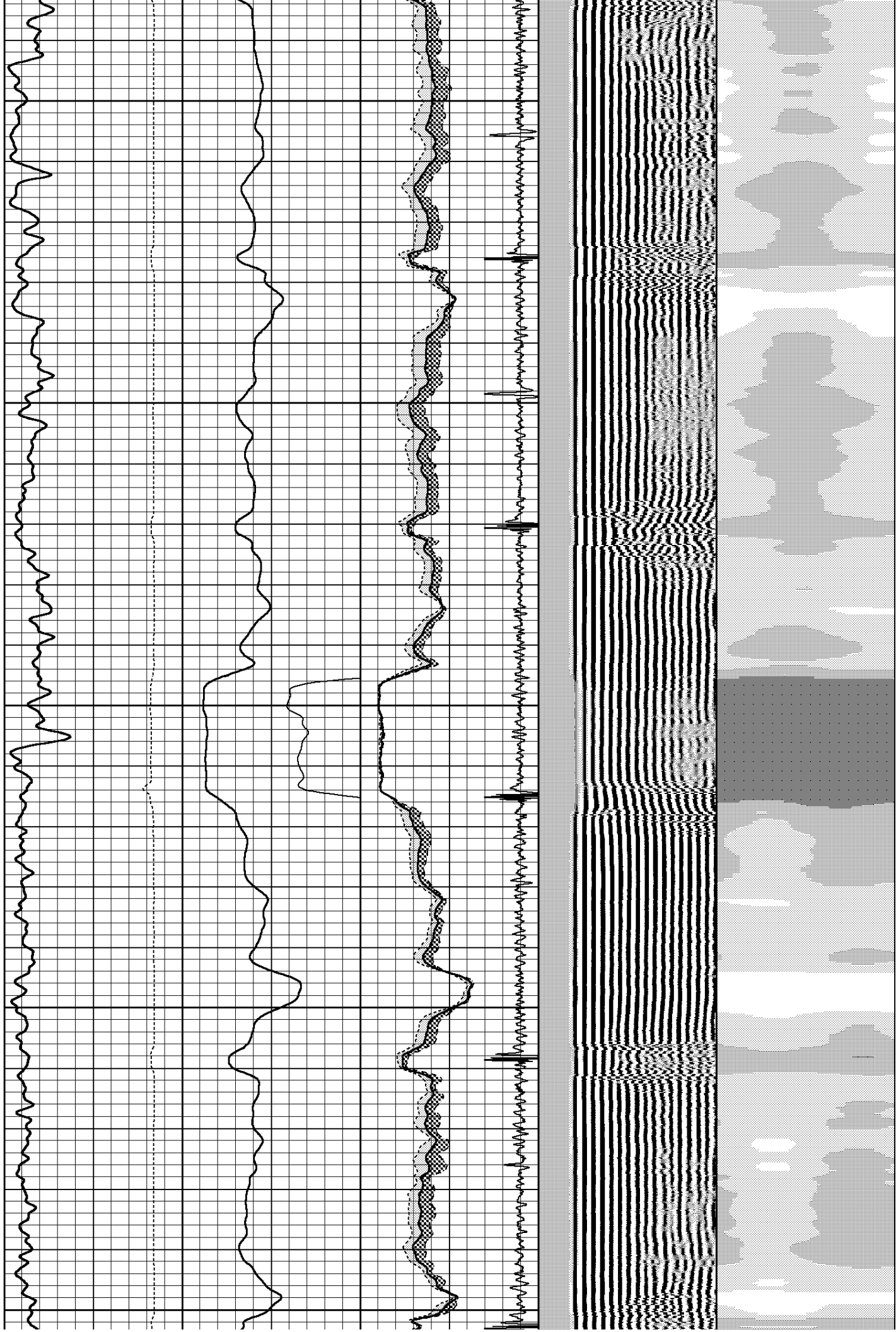
1100

1150

1200

1250

1300

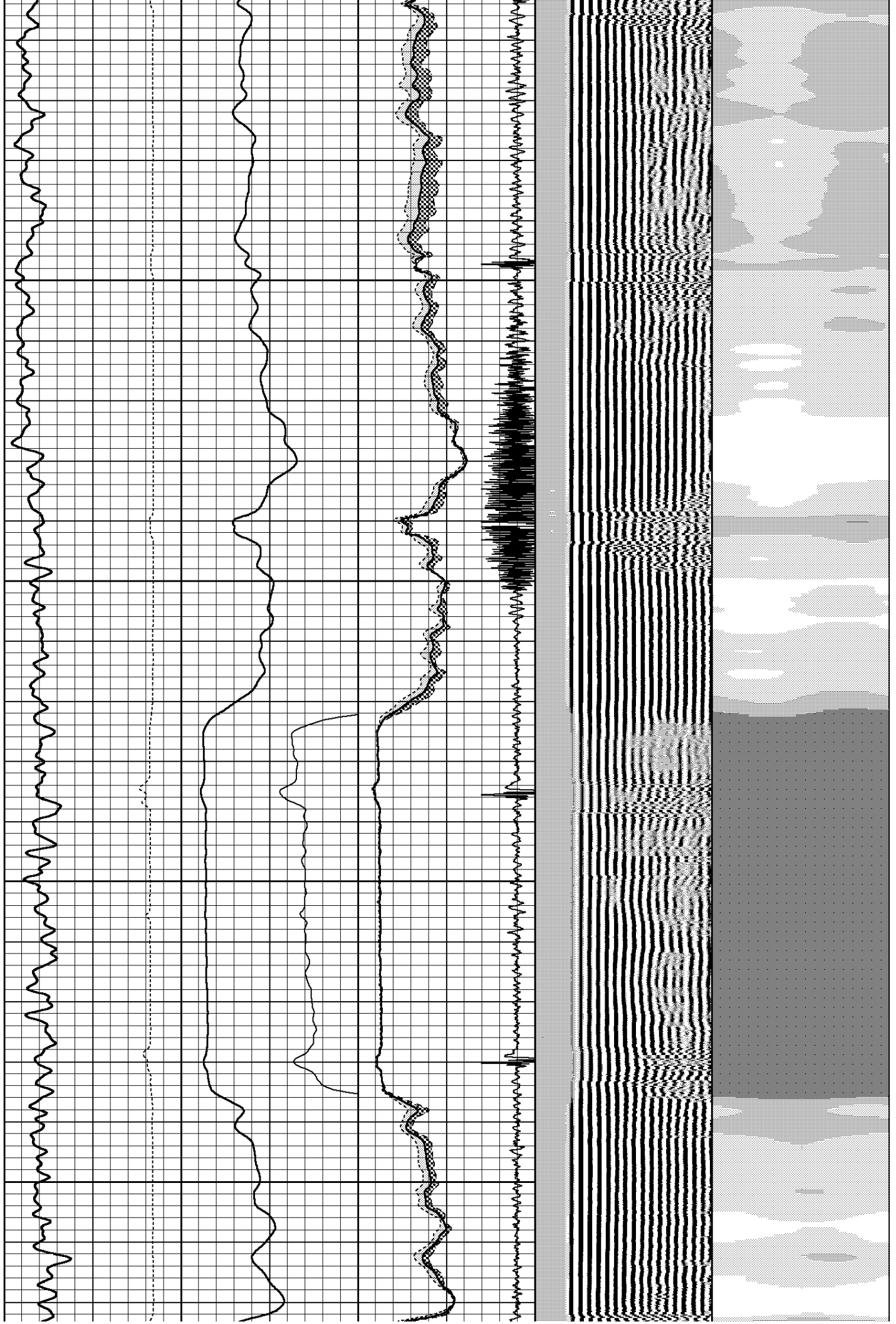


1350

1400

1450

1500

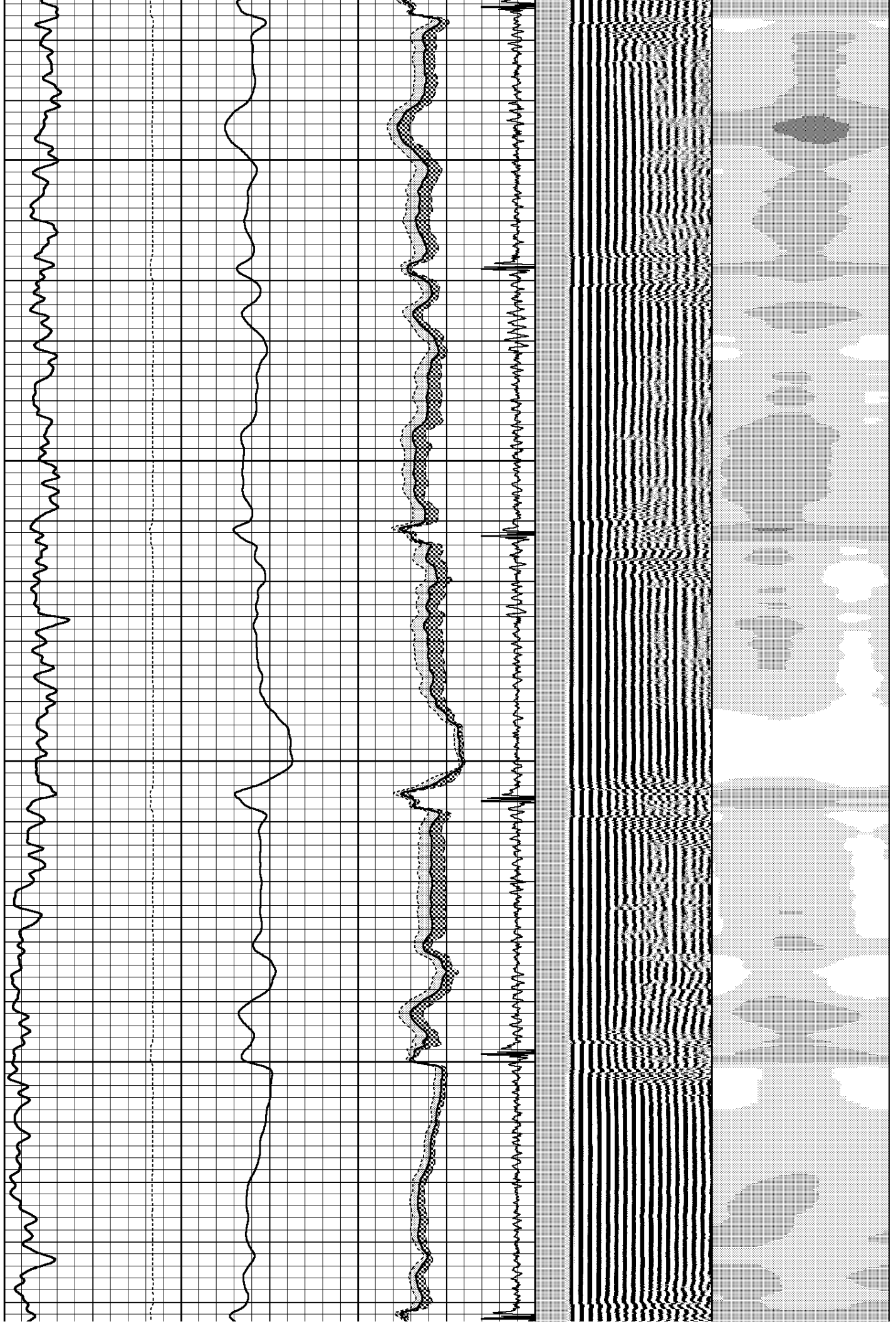


1550

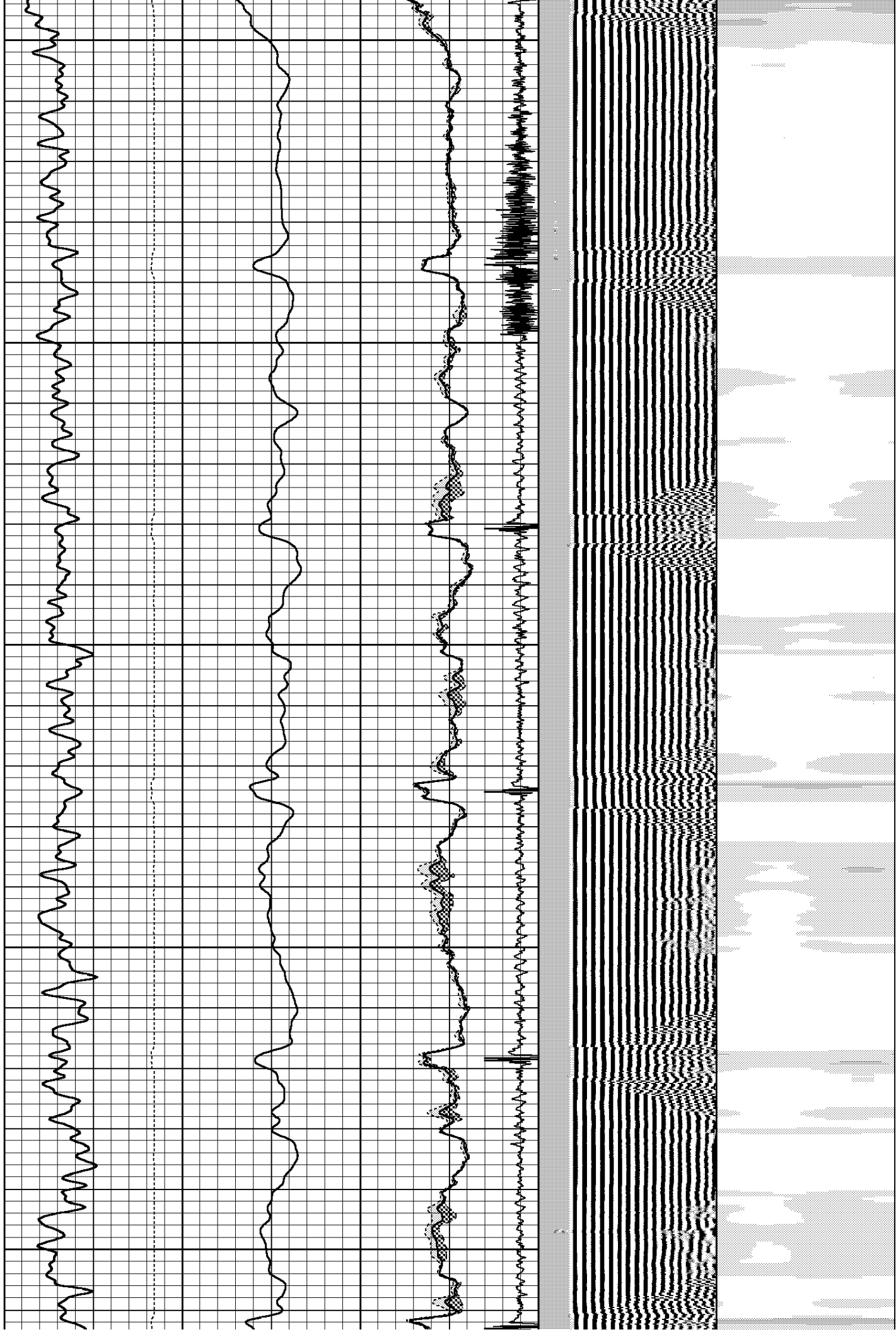
1600

1650

1700



1750
1800
1850
1900
1950

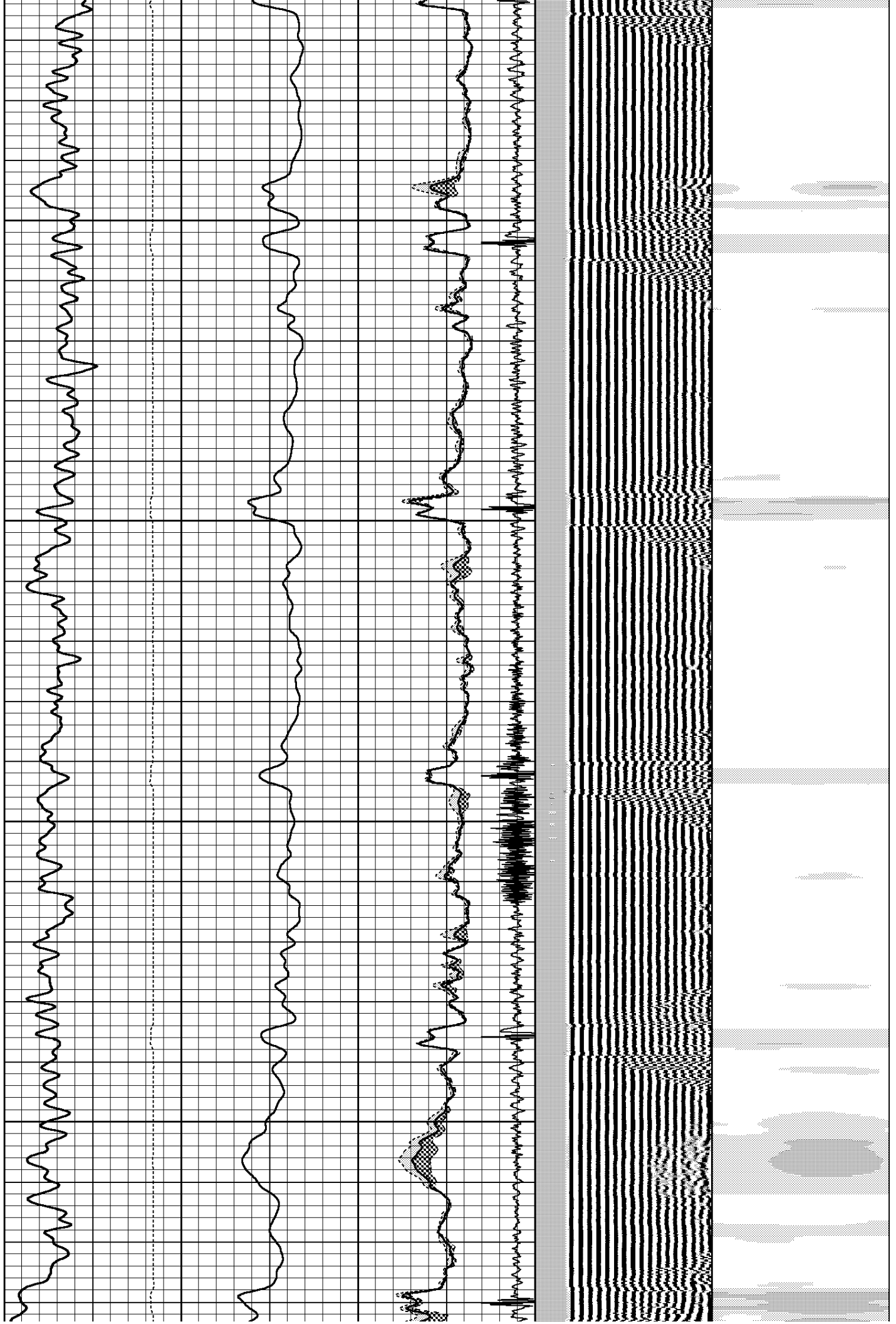


2000

2050

2100

2150



2200
2250
2300
2350
2400

