



**SUPERIOR**  
Hays,  
Kansas

**MICRO**  
LOG

Company HERMAN L. LOEB, LLC  
Well REDETZKE #5-22  
Field HALLET  
County HODGEMAN  
State KANSAS

Company HERMAN L. LOEB, LLC  
Well REDETZKE #5-22  
Field HALLET  
County HODGEMAN State KANSAS

Location: API # : 15-083-21826-0000  
1070' FNL & 1520' FEL  
SE - SE - NW - NE  
SEC 22 TWP 22S RGE 25W  
Permanent Datum GROUND LEVEL Elevation 2519  
Log Measured From KELLY BUSHING 11' A.G.L.  
Drilling Measured From KELLY BUSHING  
Elevation  
K.B. 2530  
D.F. 2528  
G.L. 2519

Date	8/16/12
Run Number	ONE
Depth Driller	4720
Depth Logger	4720
Bottom Logged Interval	4718
Top Log Interval	3850
Casing Driller	8 5/8" @ 583
Casing Logger	581
Bit Size	7 7/8
Type Fluid in Hole	CHEMICAL MUD
Density / Viscosity	9.4/52
pH / Fluid Loss	10.5/8.8
Source of Sample	FLOWLINE
Rim @ Meas. Temp	0.80 @ 81F
Rmf @ Meas. Temp	0.60 @ 81F
Rmc @ Meas. Temp	0.96 @ 81F
Source of Rmf / Rmc	MEASURED
Rim @ BHT	0.52 @ 122F
Time Circulation Stopped	2 HOURS
Time Logger on Bottom	
Maximum Recorded Temperature	122F
Equipment Number	680
Location	HAYS, KS.
Recorded By	JEFF GRONEMEG
Witnessed By	JON CHRISTENSEN

<<< Fold Here >>>

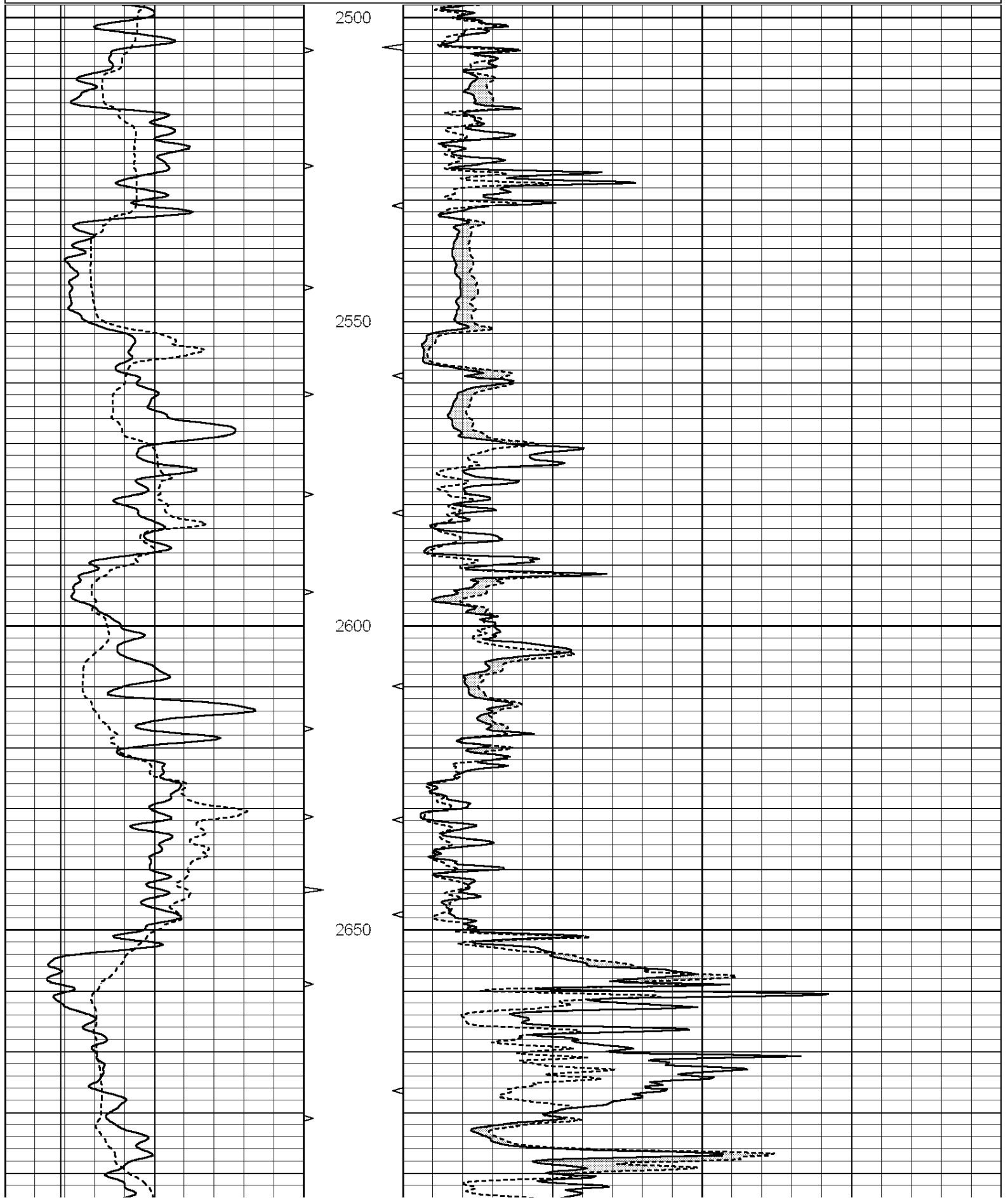
All interpretations are opinions based on inferences from electrical or other measurements and we cannot and do not guarantee the accuracy or correctness of any interpretation, and we shall not, except in the case of gross or willful negligence on our part, be liable or responsible for any loss, costs, damages, or expenses incurred or sustained by anyone resulting from any interpretation made by any of our officers, agents or employees. These interpretations are also subject to our general terms and conditions set out in our current Price Schedule.

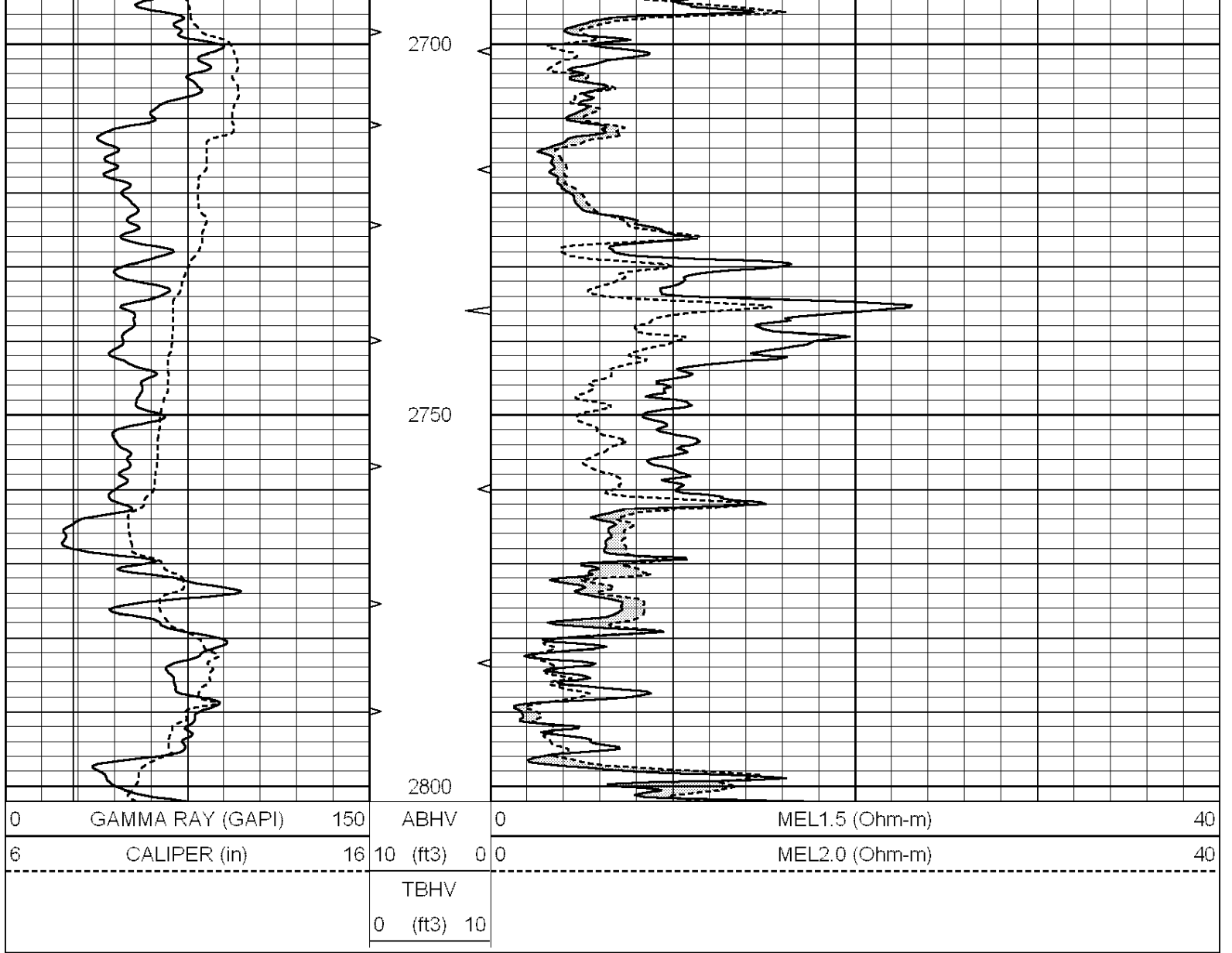
**Comments**

THANK YOU FOR USING SUPERIOR WELL SERVICE (785) 628-6395  
DIRECTIONS  
JETMORE, KS - 8 MILES WEST TO RD 210 - 3 1/2 MILES NORTH  
WEST INTO

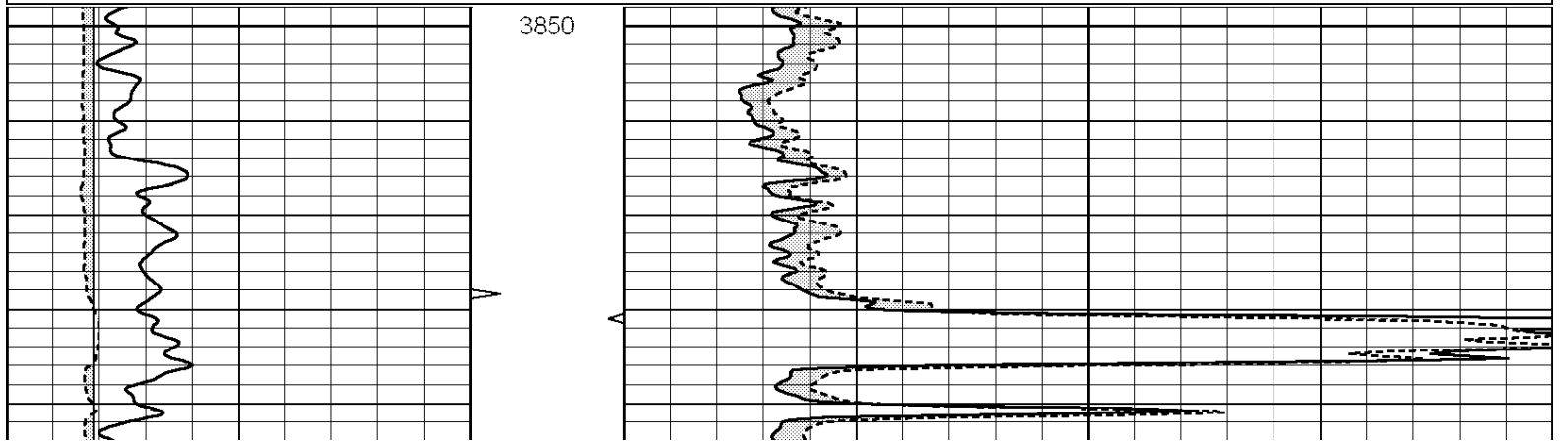
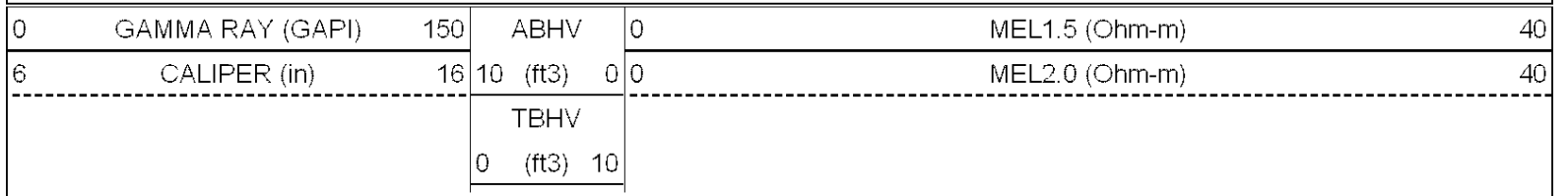
Database File: 009581pe.db  
Dataset Pathname: pass5.1  
Presentation Format: \_micro  
Dataset Creation: Thu Aug 16 04:53:16 2012 by Calc Open-Cased 090629  
Charted by: Depth in Feet scaled 1:240

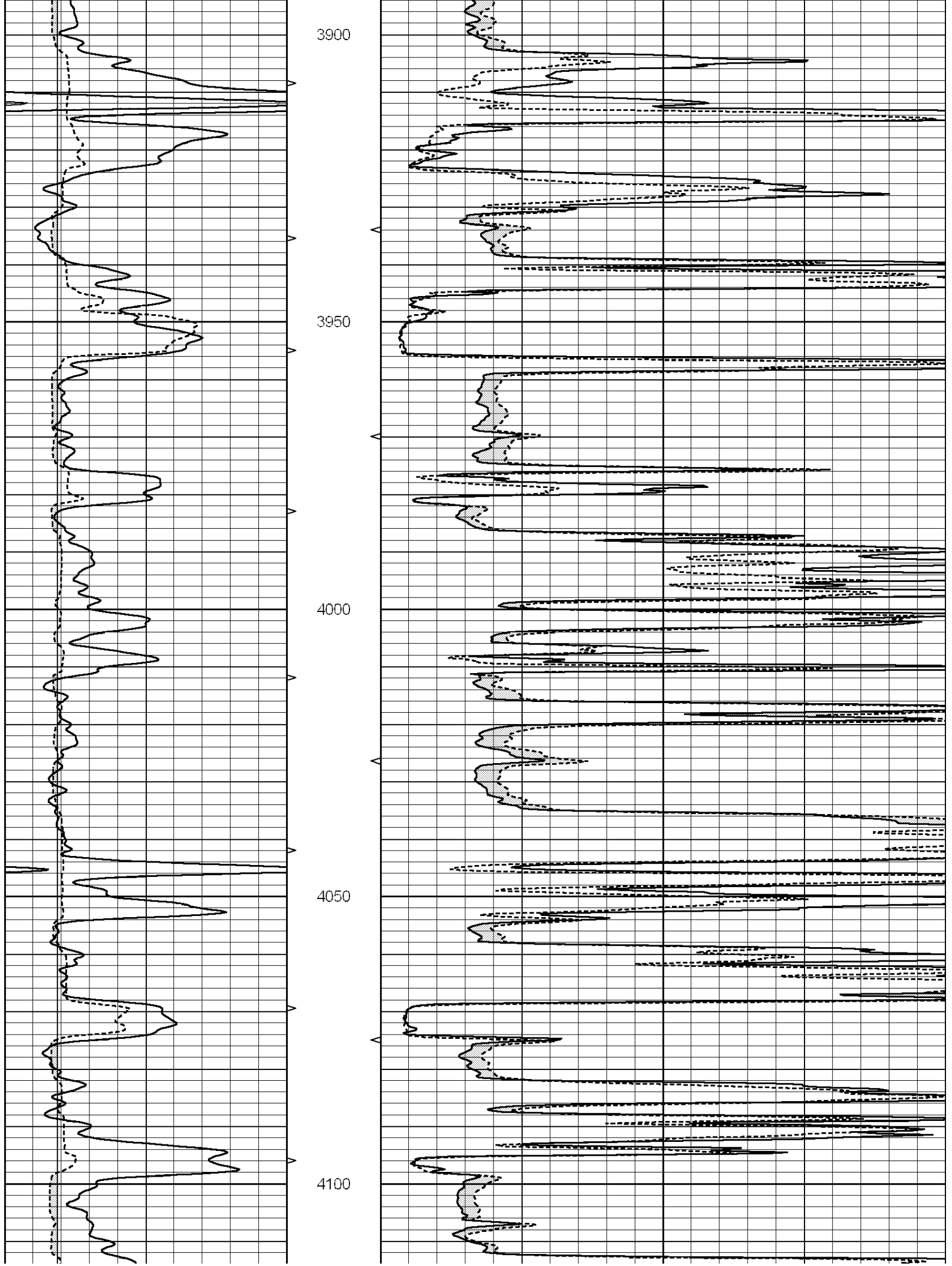
0	GAMMA RAY (GAPI)	150	ABHV	0	MEL1.5 (Ohm-m)	40
6	CALIPER (in)	16	10 (ft3)	0 0	MEL2.0 (Ohm-m)	40
			TBHV			
			0 (ft3)	10		

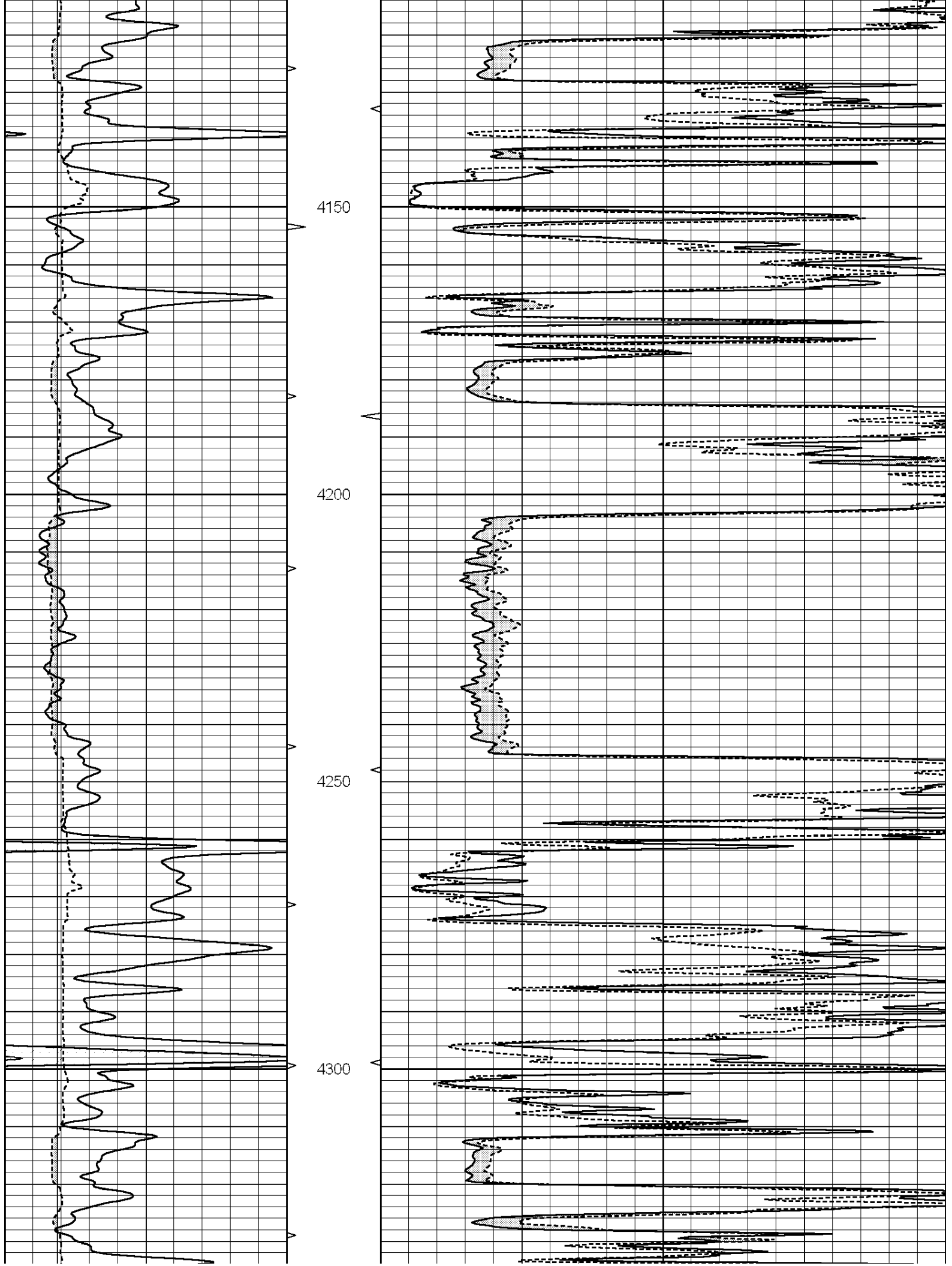


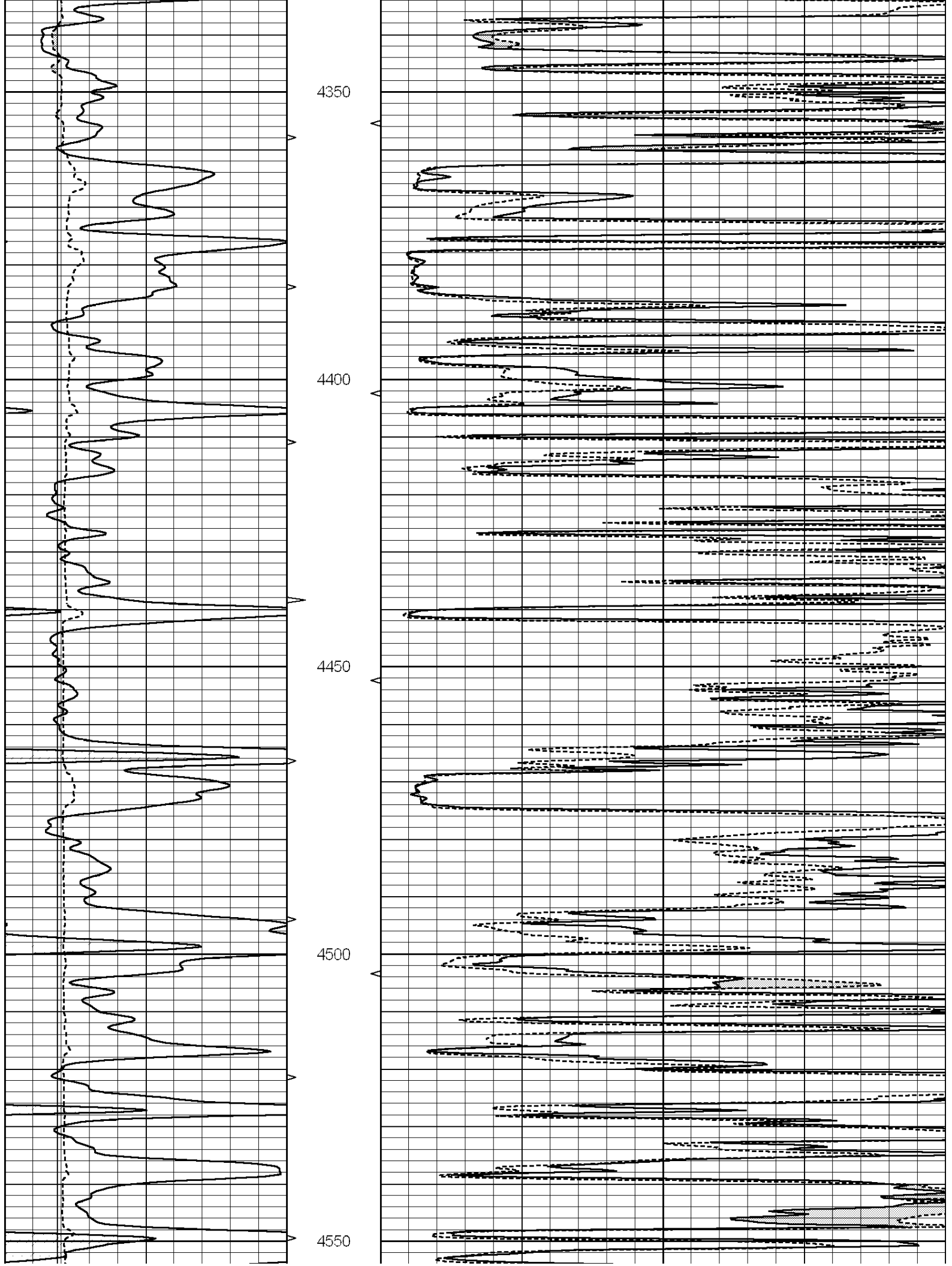


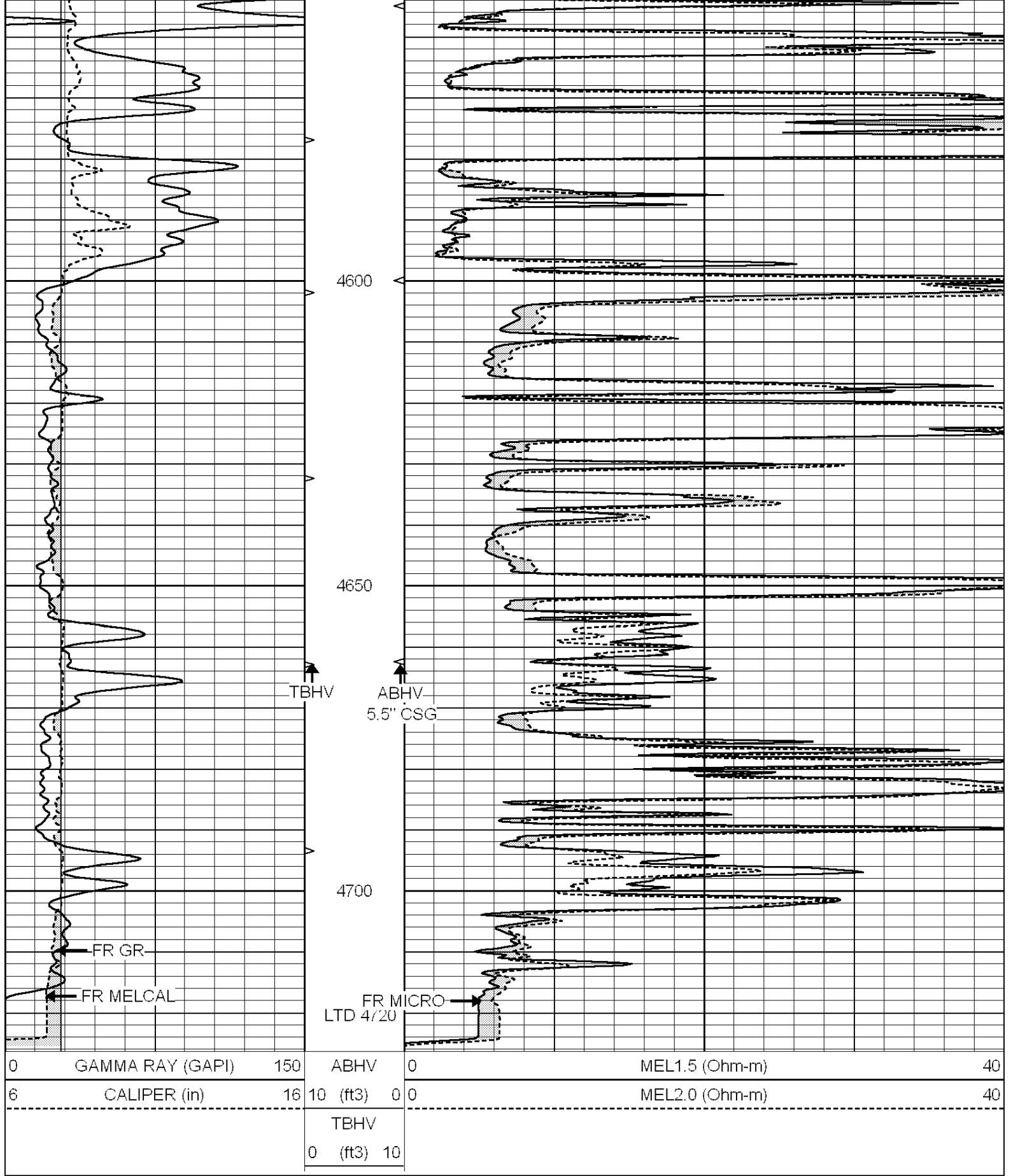
Database File: 009581pe.db  
 Dataset Pathname: pass5.1  
 Presentation Format: \_micro  
 Dataset Creation: Thu Aug 16 04:53:16 2012 by Calc Open-Cased 090629  
 Charted by: Depth in Feet scaled 1:240









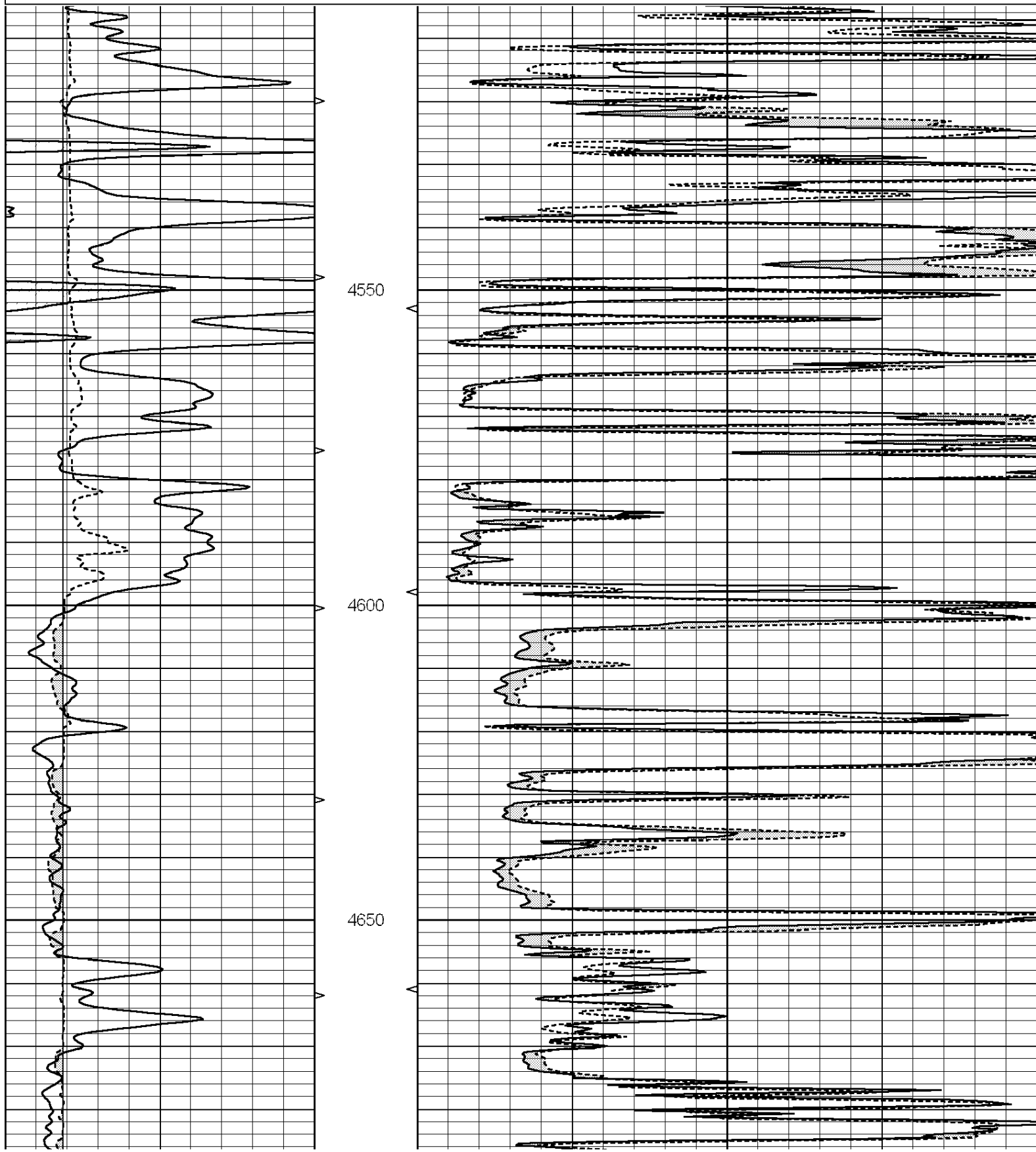


SUPERIOR  
Hays,  
Kansas

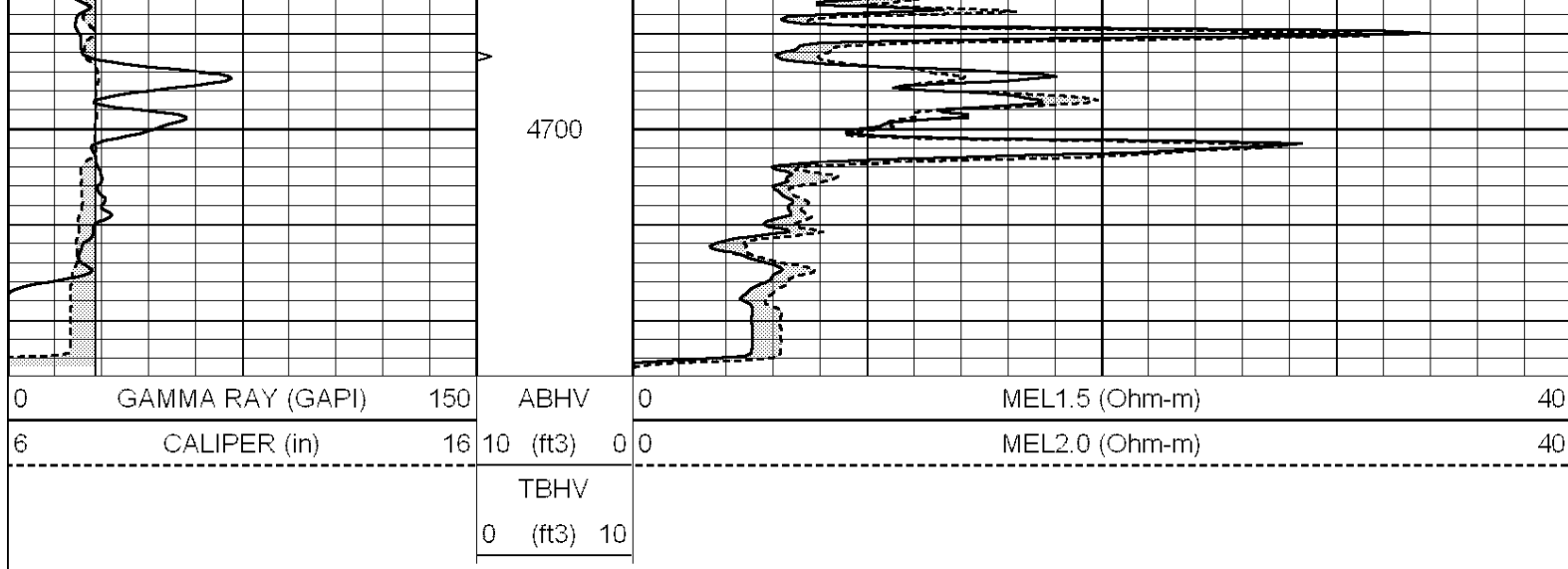
# REPEAT SECTION

Database File: 009581pe.db  
 Dataset Pathname: pass4.1  
 Presentation Format: \_micro  
 Dataset Creation: Thu Aug 16 04:24:31 2012 by Calc Open-Cased 090629  
 Charted by: Depth in Feet scaled 1:240

0	GAMMA RAY (GAPI)	150	ABHV	0	MEL1.5 (Ohm-m)	40
6	CALIPER (in)	16	10 (ft3)	0 0	MEL2.0 (Ohm-m)	40
			TBHV			
			0 (ft3)	10		







### Calibration Report

Database File: 009581pe.db  
 Dataset Pathname: pass5.1  
 Dataset Creation: Thu Aug 16 04:53:16 2012 by Calc Open-Cased 090629

#### MICRO Calibration Report

Serial Number:	MICRO6	
Tool Model:	PROBE	
Performed:	Wed May 23 05:16:50 2012	
Caliper Calibration:	Gain=6.253	Offset=-1.508
References	Low Cal	High Cal
Readings	5.800	13.000
	1.178	2.330
1.5" Calibration:	Gain=30.075	Offset=-0.200
References	Low Cal	High Cal
Readings	0.000	20.000
	0.004	1.196
2" Calibration:	Gain=30.041	Offset=0.000
References	Low Cal	High Cal
Readings	0.000	20.000
	0.006	0.913

#### Gamma Ray Calibration Report

Serial Number:	#8	
Tool Model:	OPEN	
Performed:	Mon Jun 13 16:56:43 2011	
Calibrator Value:	150.0	GAPI
Background Reading:	0.0	cps
Calibrator Reading:	175.0	cps
Sensitivity:	0.8371	GAPI/cps