



MIDWEST SURVEYS
 LOGGING - PERFORATING - CONSULTING SERVICES
 P.O. Box 88, Osawatomie, KS 66064
 913.755-2128

GAMMA RAY / NEUTRON / CCL

File No.

Company **EnerJex Kansas, Inc.**

Well **Needham No. BSI-N-12**

Field **Paola / Rantoul**

County **Franklin** State **Kansas**

Location **1794' FSL & 4844' FEL**

NE-SW-NW-SW

Sec. **17** Twp. **18S** Rge. **21E**

Permanent Datum **GL** Elevation **NA**

Log Measured From **GL**

Drilling Measured From **GL**

Other Services
Perforate

Elevation
 K.B. NA
 D.F. NA
 G.L. NA

API # 15-059-26,300

Date

Run Number

Depth Driller

Depth Logger

Bottom Logged Interval

Top Log Interval

Fluid Level

Type Fluid

Density / Viscosity

Salinity - PPM Cl

Max Recorded Temp

Estimated Cement Top

Equipment No.

Recorded By

Witnessed By

BORE-HOLE RECORD				CASING RECORD			
RUN No.	BIT FROM	TO	SIZE	WGT.	FROM	TO	
One	9.875	0.0	21.0"	7.00"	0.0	21.0	
Two	5.625	21.0	700.0	2.875"	0.0	693.0	

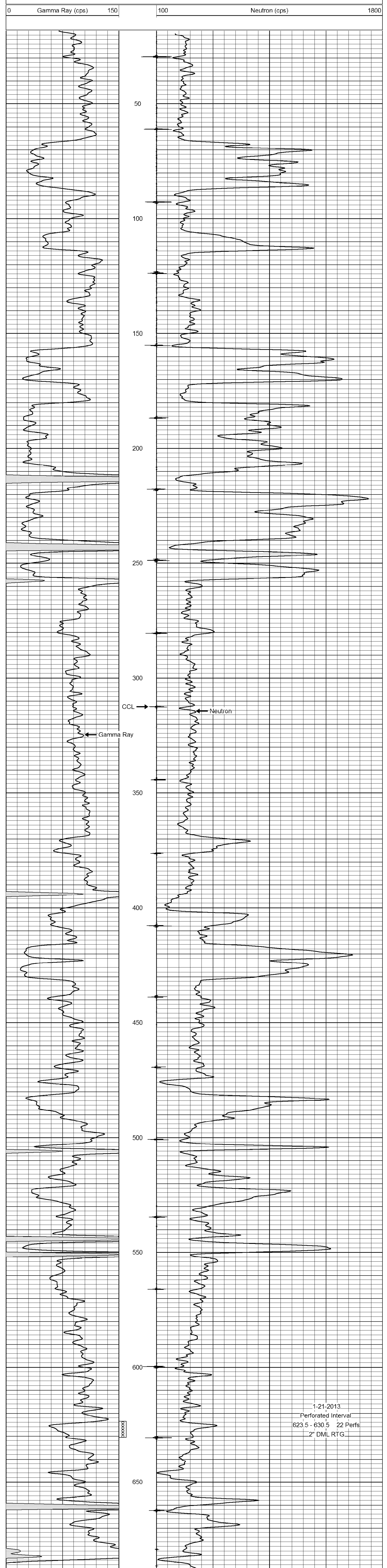
<<< Fold Here >>>

All interpretations are opinions based on inferences from electrical or other measurements and we cannot and do not guarantee the accuracy or correctness of any interpretation, and we shall not, except in the case of gross or willful negligence on our part, be liable or responsible for any loss, costs, damages, or expenses incurred or sustained by anyone resulting from any interpretation made by any of our officers, agents or employees. These interpretations are also subject to our general terms and conditions set out in our current Price Schedule.

Comments

Drilling Contractor :
JTC Oil Company Inc.

Database File: needham12in.db
 Dataset Pathname: pass1
 Presentation Format: gr-n-ccl
 Dataset Creation: Thu Dec 13 15:22:26 2012 by Log SCH 111116
 Charted by: Depth in Feet scaled 1:240



1-21-2013
 Perforated Interval
 623.5 - 630.5 22 Perfs
 2" DML RTG