



**MIDWEST SURVEYS**  
 LOGGING - PERFORATING - CONSULTING SERVICES  
 P.O. Box 88, Osawatomie, KS 66064  
 913 / 735 - 2128

**GAMMA RAY / NEUTRON / CCL**

File No.

Company **RJ Enterprises**  
 Well **SP Johnson No. 12-1**  
 Field **Bush City Shoestring**  
 County **Anderson** State **Kansas**

Location **1320 FSL & 2979 FEL**  
**W/2-E/2-E/2-SW**

Sec **7** Typ **21s** Rge **20e**  
 Perforated Datum **GL** Elevation **NA**  
 Log Measured From **GL**  
 Drilling Measured From **GL**

Other Services  
 Perforate

Elevation  
 KB NA  
 D.F. NA  
 G.L. NA

Date **01-23-2013**

Run Number **One**

Depth Driller **830.0**

Depth Logger **823.0**

Bottom Logged Interval **822.0**

Top Log Interval **20.0**

Fluid Level **Full**

Type Fluid				Density / Viscosity				Salinity - PPM Cl				Max Recorded Temp				Estimated Cement Top				Equipment No.				Location			
Water				NA				NA				NA				NA				102 - Osawatomie							
Witnessed By				Steve Windisch				Jason Kent																			

BORE-HOLE RECORD				CASING RECORD			
Run No.	BIT	FROM	TO	SIZE	WGT.	FROM	TO
One	9.875"	0.0	20.0	7.00"	17.0 #	0.0	20.0
Two	5.625"	20.0	830.0	2.875"	6.5 #	0.0	824.0

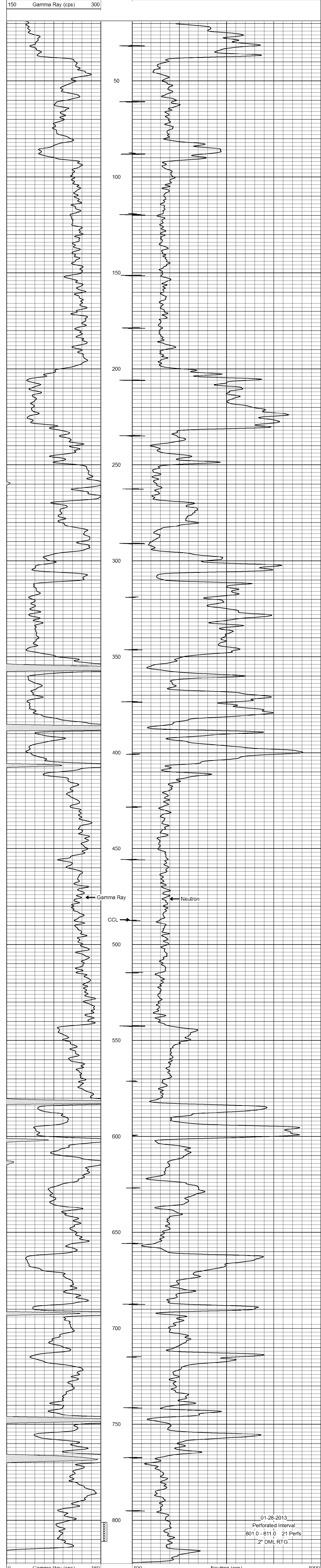
<<< Fold Here >>>

All interpretations are opinions based on inferences from electrical or other measurements and we cannot and do not guarantee the accuracy or correctness of any interpretation, and we shall not, except in the case of gross or willful negligence on our part, be liable or responsible for any loss, costs, damages, or expenses incurred or sustained by anyone resulting from any interpretation made by any of our officers, agents or employees. These interpretations are also subject to our general terms and conditions set out in our current Price Schedule.

Comments

Drilling Contractor :  
 RJ Enterprises

Database File: johnson12isp.cb  
 Dataset Pathname: pass1  
 Presentation Format: gr-n-ccl  
 Dataset Creation: Wed Jan 23 11:48:23 2013 by Log SCH 111116  
 Charted by: Depth in Feet scaled 1:240



BORE-HOLE RECORD				CASING RECORD			
Run No.	BIT	FROM	TO	SIZE	WGT.	FROM	TO
One	9.875"	0.0	20.0	7.00"	17.0 #	0.0	20.0
Two	5.625"	20.0	830.0	2.875"	6.5 #	0.0	824.0