



Pioneer Energy Services

Dual Induction Log

API No.	15-007-24157-00-00		
Company	Indian Oil Company, Inc.		
Well	Share Trust #1		
Field	Unnamed		
County	Barber	State	Kansas
Location	1320' FSL & 330' FEL		
Sec:	15	Twp:	35S
		Rge:	12W
Other Services	CNL/CDL		

Permanent Datum	Ground Level	Elevation	1371
Log Measured From	Kelly Bushing	11 Ft. Above Perm. Datum	
Drilling Measured From	Kelly Bushing		
Date	4/13/2014		
Run Number	One		
Depth Driller	5100		
Depth Logger	5099		
Bottom Logged Interval	5098		
Top Log Interval	850		
Casing Driller	8.625 @ 855		
Casing Logger	848		
Bit Size	7.875		
Type Fluid in Hole	Chemical		
Salinity, ppm CL	4000		
Density / Viscosity	9.4	55	
pH / Fluid Loss	10.5	9.2	
Source of Sample	Flowline		
Rm @ Meas. Temp	0.85 @ 67		
Rmf @ Meas. Temp	0.64 @ 67		
Rmc @ Meas. Temp	1.15 @ 67		
Source of Rmf / Rmc	Charts		
Rm @ BHT	0.44 @ 129		
Operating Rig Time	3 Hours		
Max Rec. Temp. F	129		
Equipment Number	91		
Location	Hays		
Recorded By	D. Schmidt		
Witnessed By	Scott Alberg		

<<< Fold Here >>>

All interpretations are opinions based on inferences from electrical or other measurements and we cannot and do not guarantee the accuracy or correctness of any interpretation, and we shall not, except in the case of gross or willful negligence on our part, be liable or responsible for any loss, costs, damages, or expenses incurred or sustained by anyone resulting from any interpretation made by any of our officers, agents or employees. These interpretations are also subject to our general terms and conditions set out in our current Price Schedule.

Comments

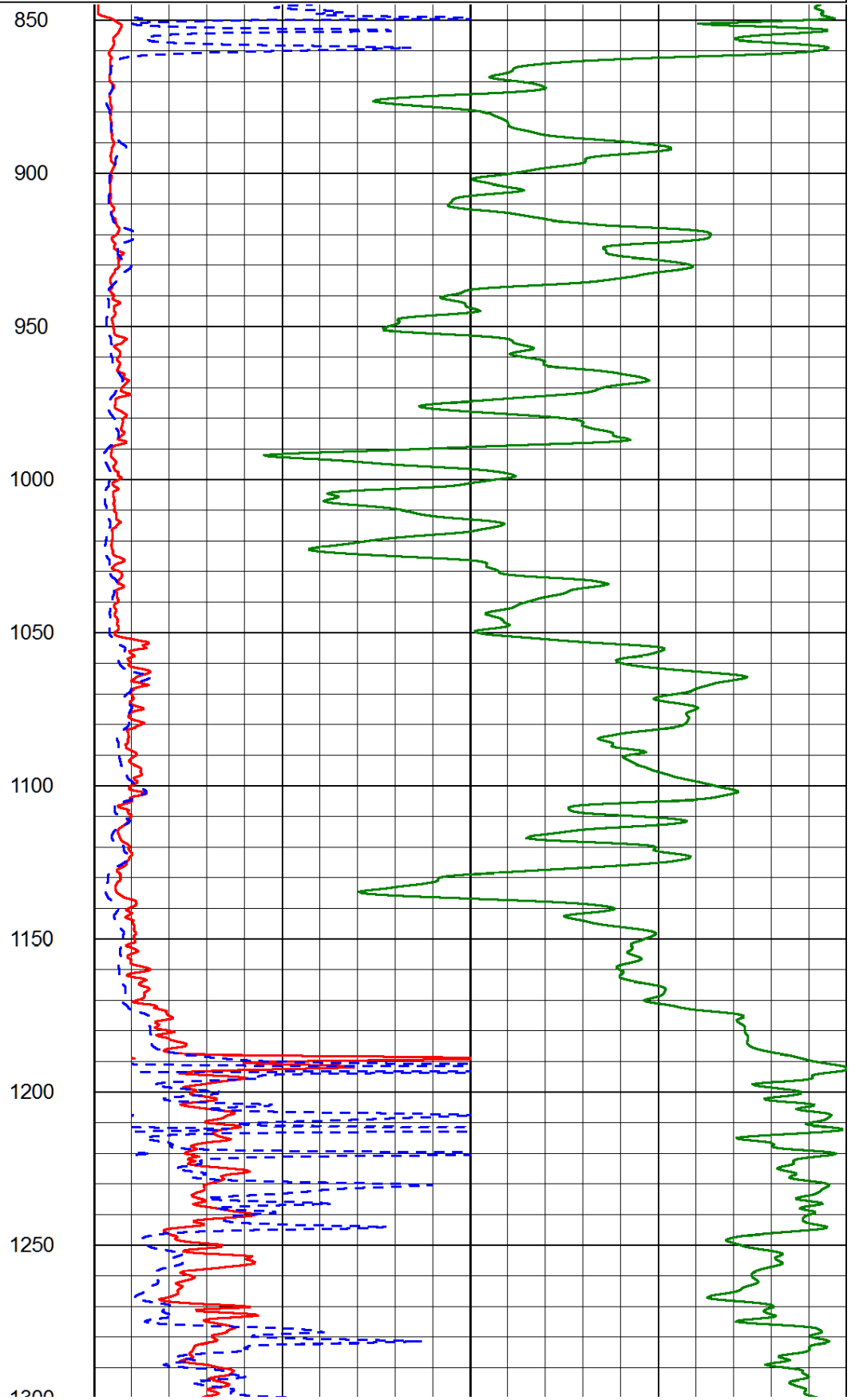
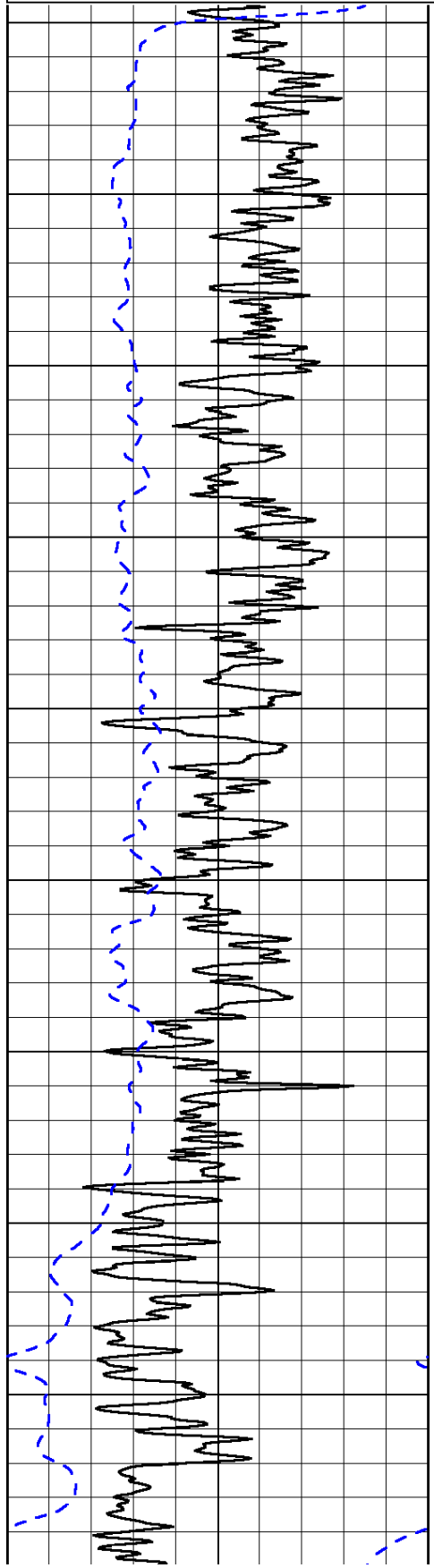
Thank you for using Log-Tech, Inc.
 (785) 625-3858

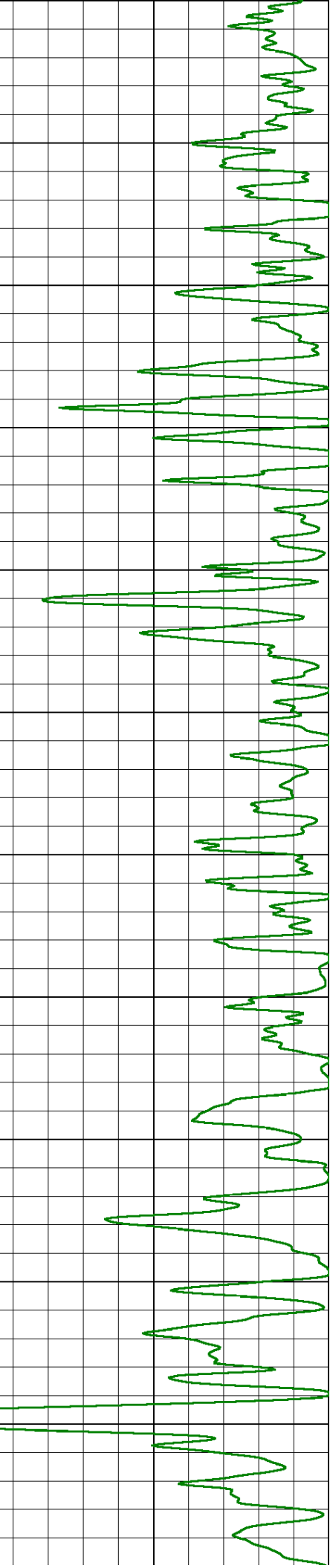
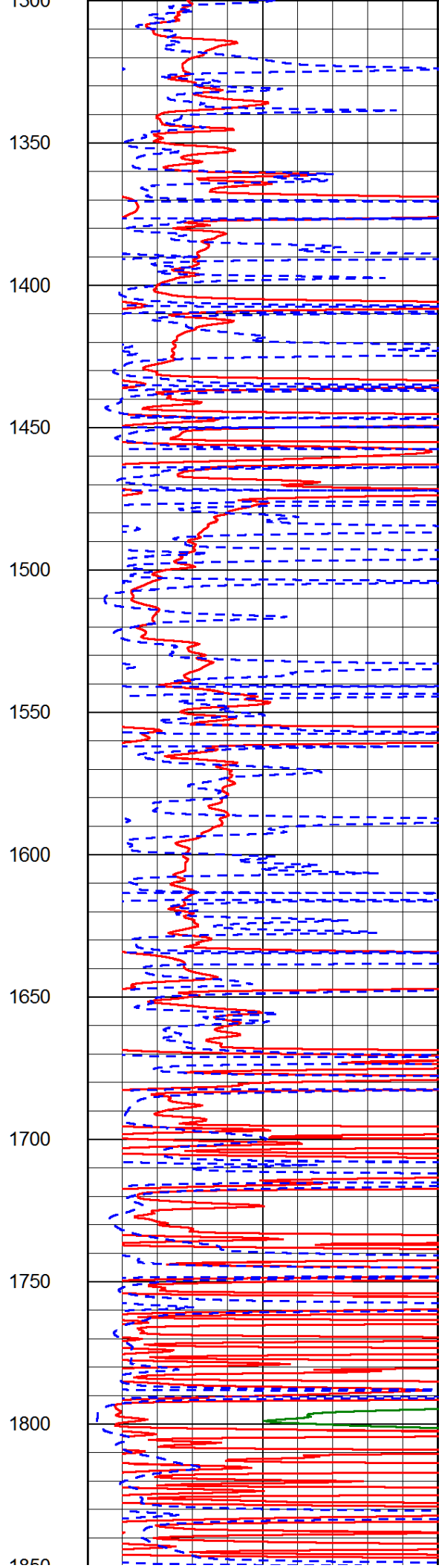
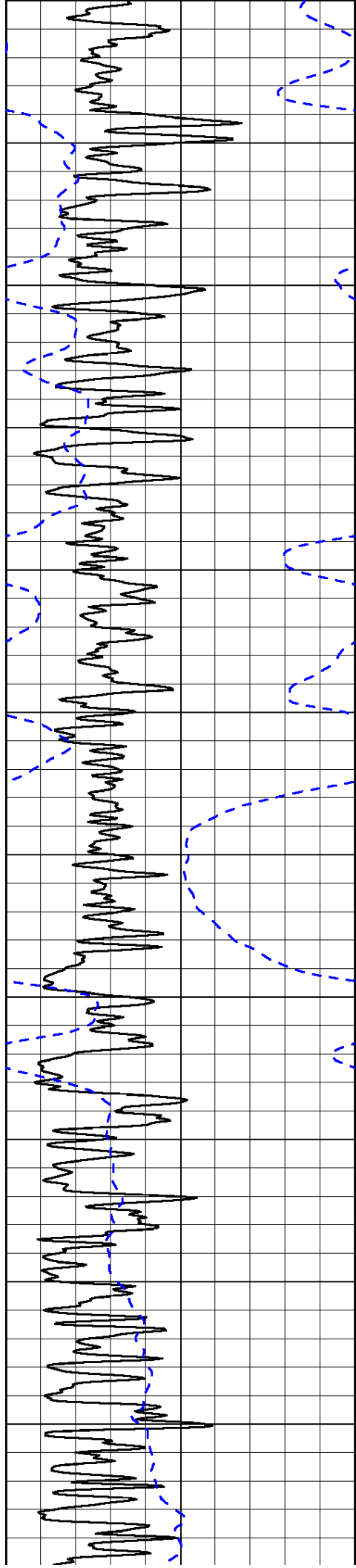
Hardtner,
 2 East to Roundup Rd, 3/4 South,
 West into

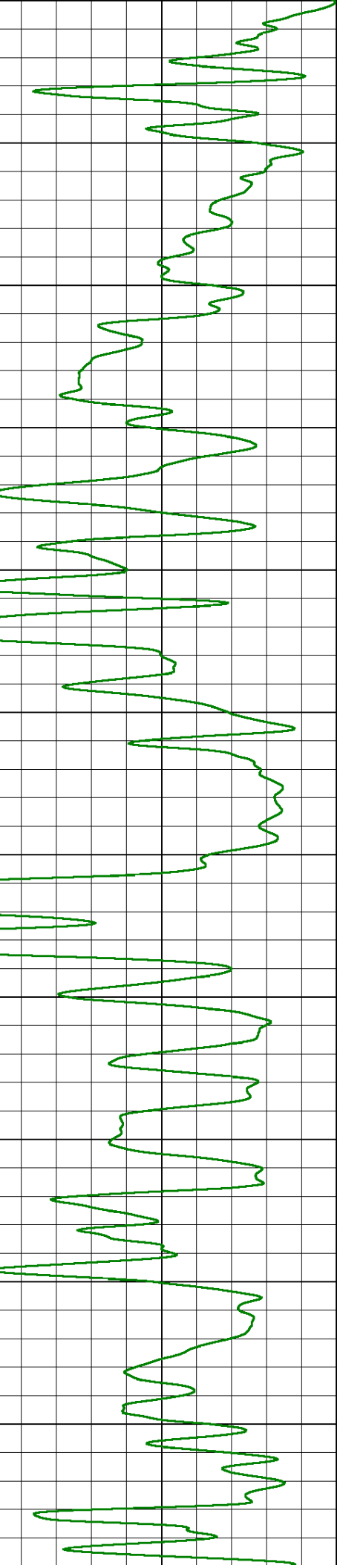
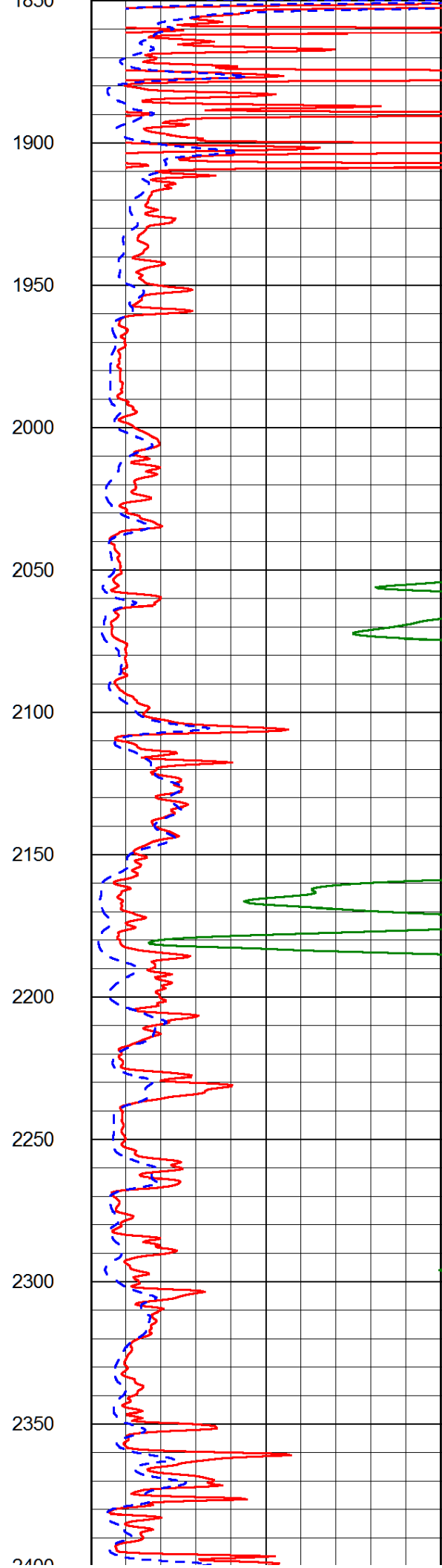
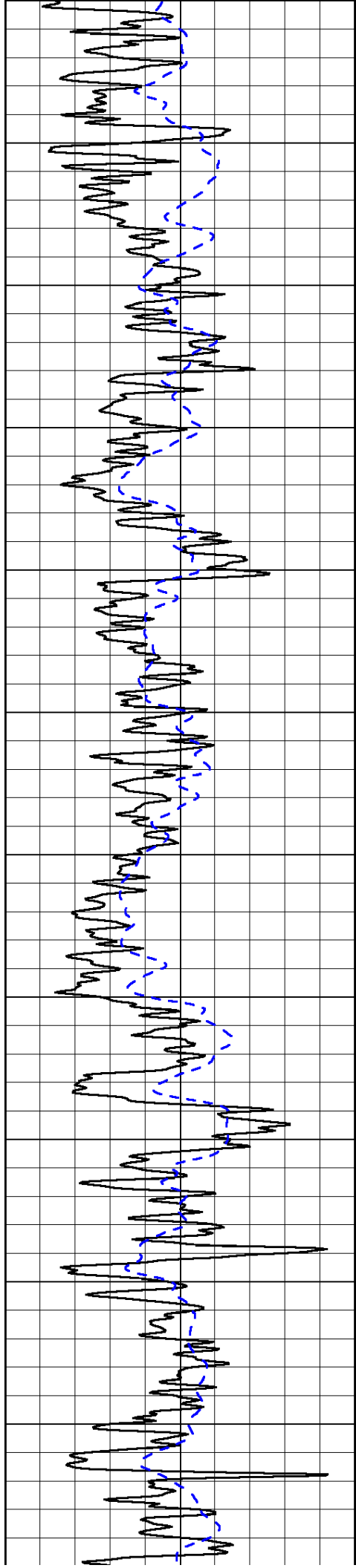
Database File: indian_041314hd.db
 Dataset Pathname: dil/indstck
 Presentation Format: dil2in
 Dataset Creation: Sun Apr 13 09:32:41 2014
 Charted by: Depth in Feet scaled 1:600

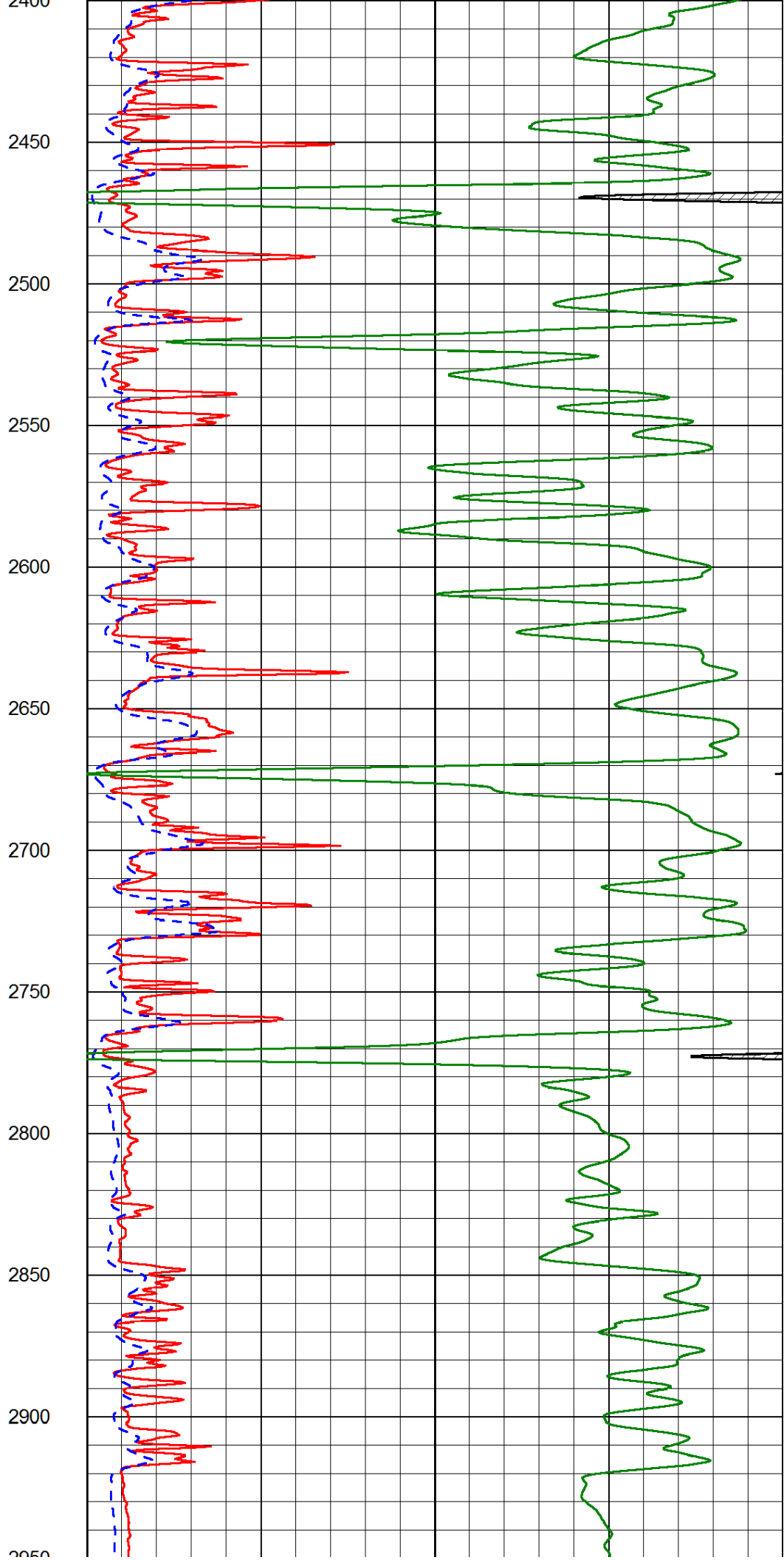
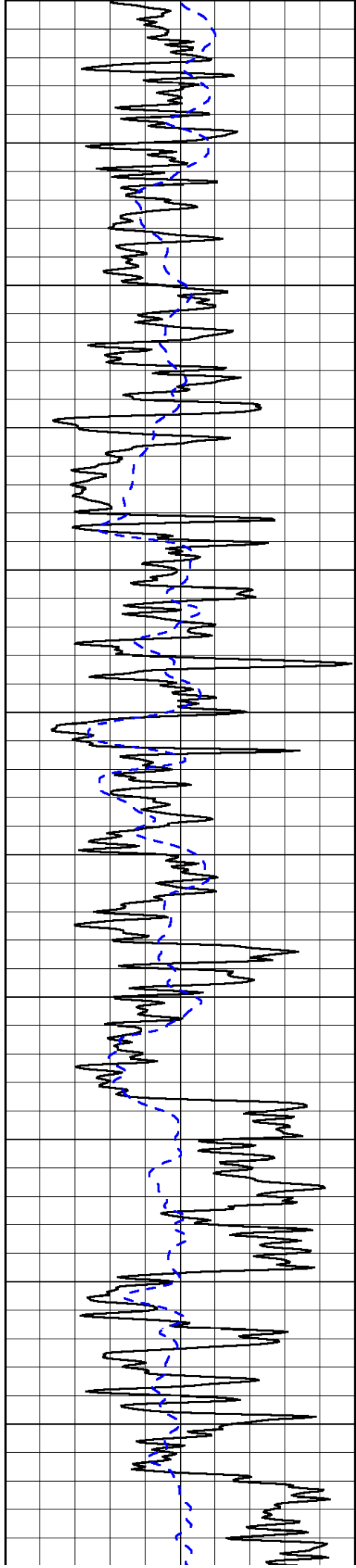
0	Gamma Ray (GAPI)	150
-200	SP (mV)	0

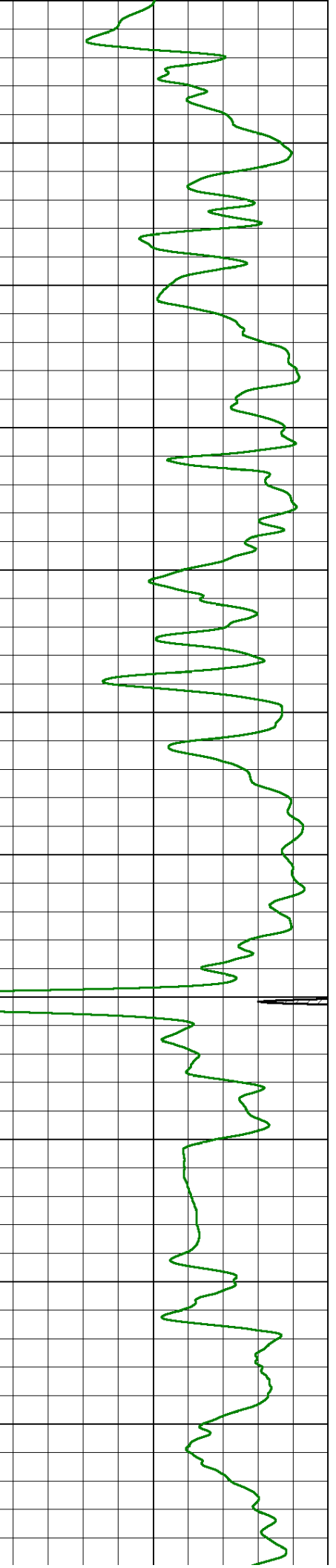
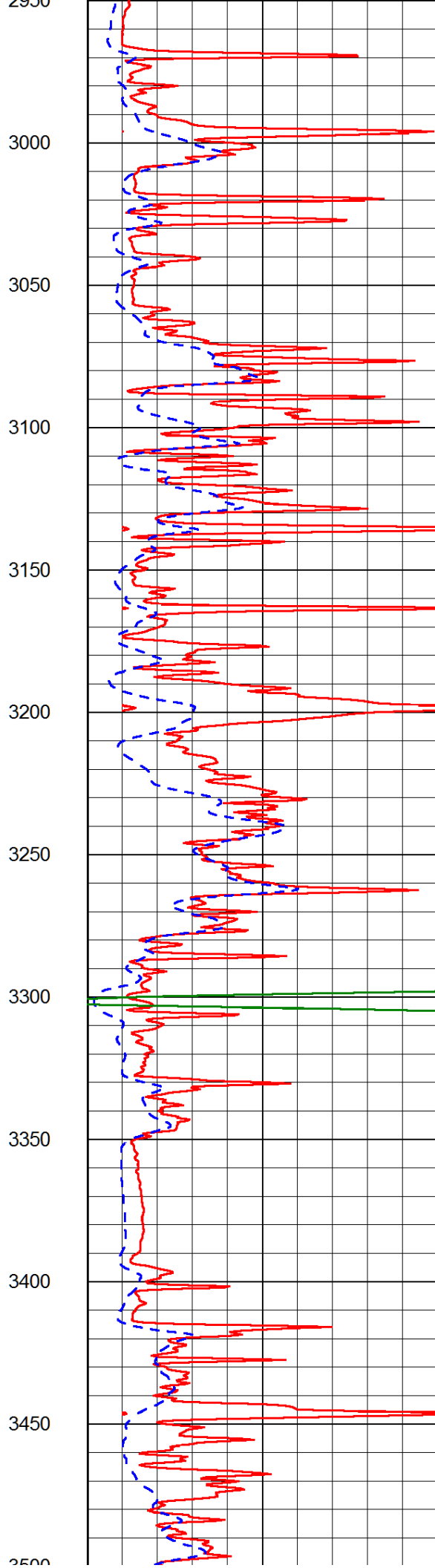
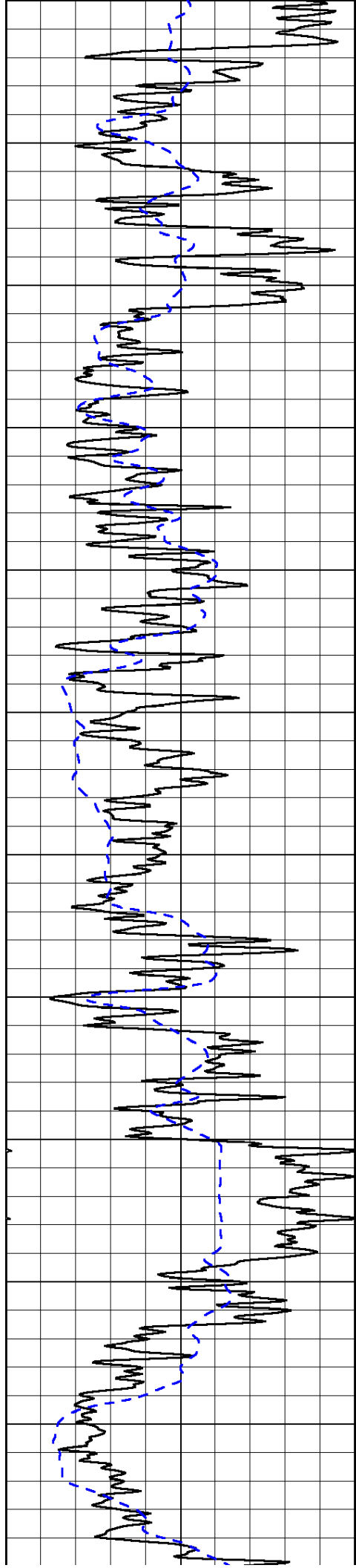
0	Shallow Resistivity (Ohm-m)	50
0	Deep Resistivity (Ohm-m)	50
1000	Conductivity (Ohm-m)	0
15000	Line Tension (lb)	0
50	Shallow Resistivity (Ohm-m)	500
50	Deep Resistivity (Ohm-m)	500

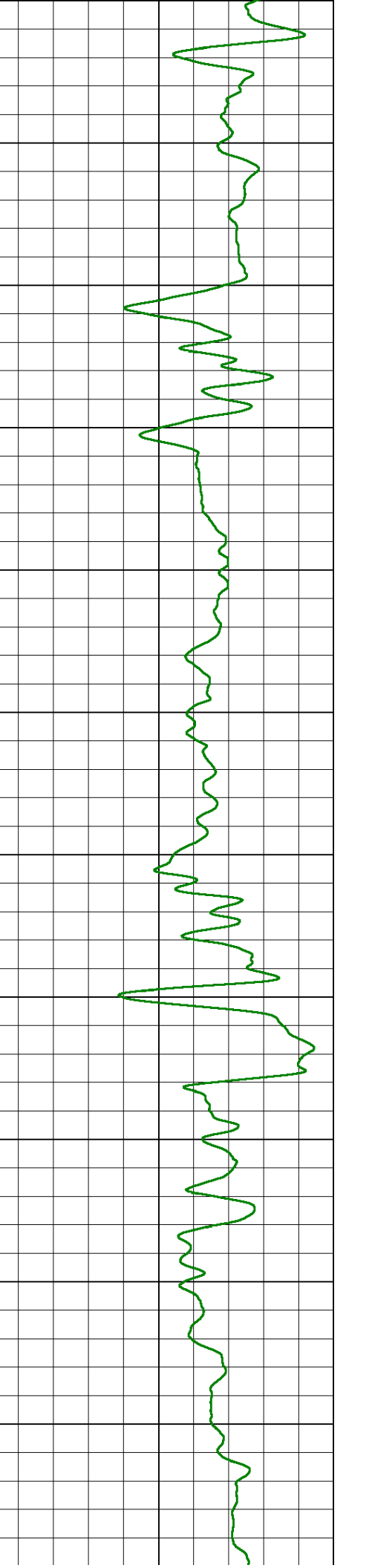
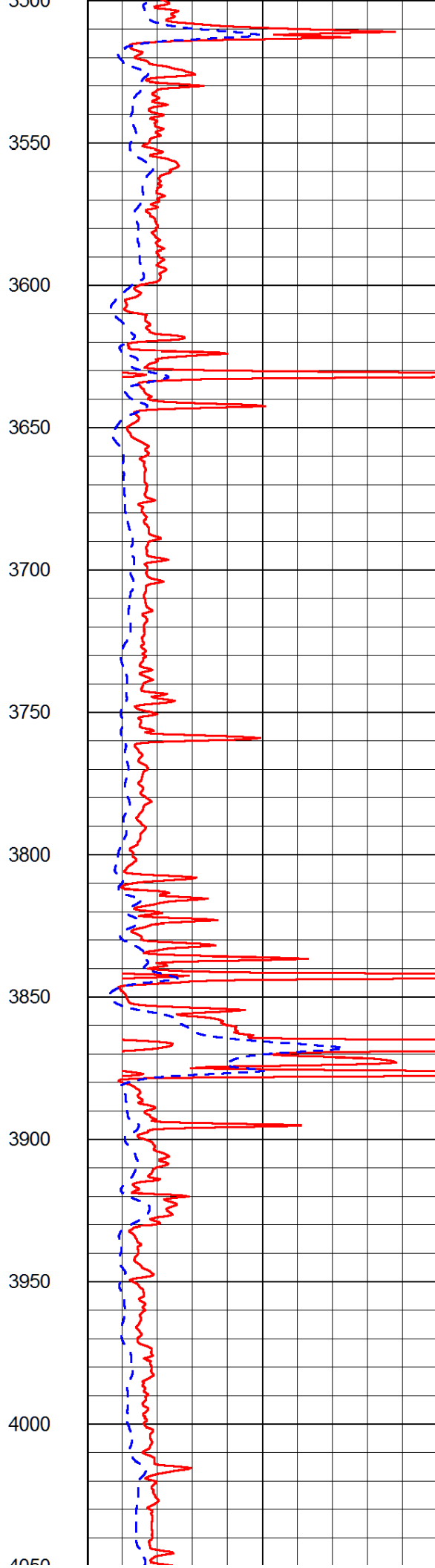
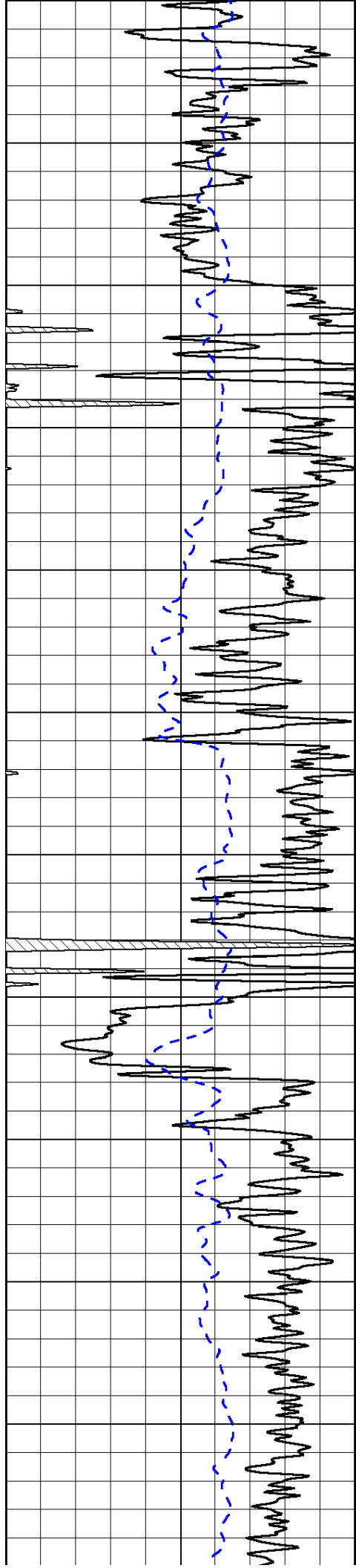


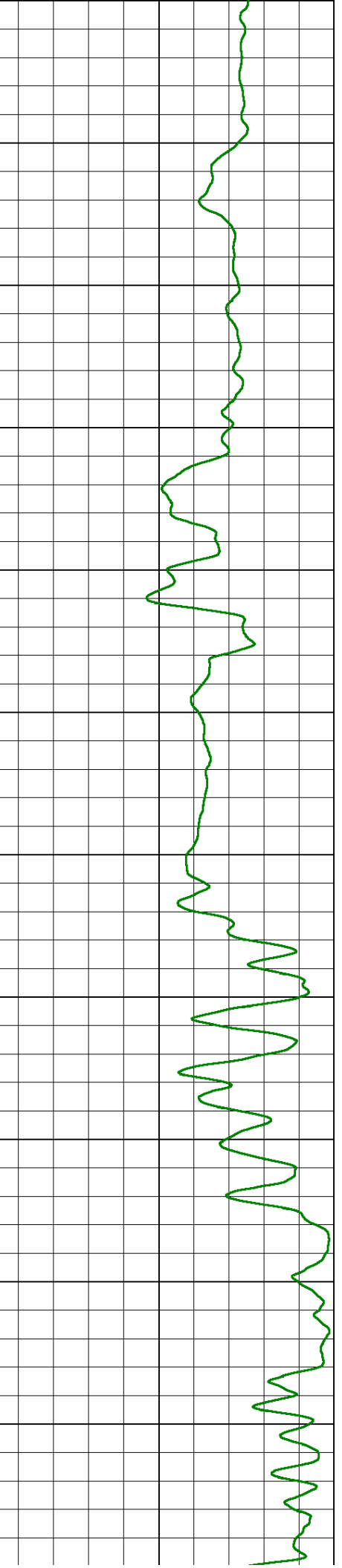
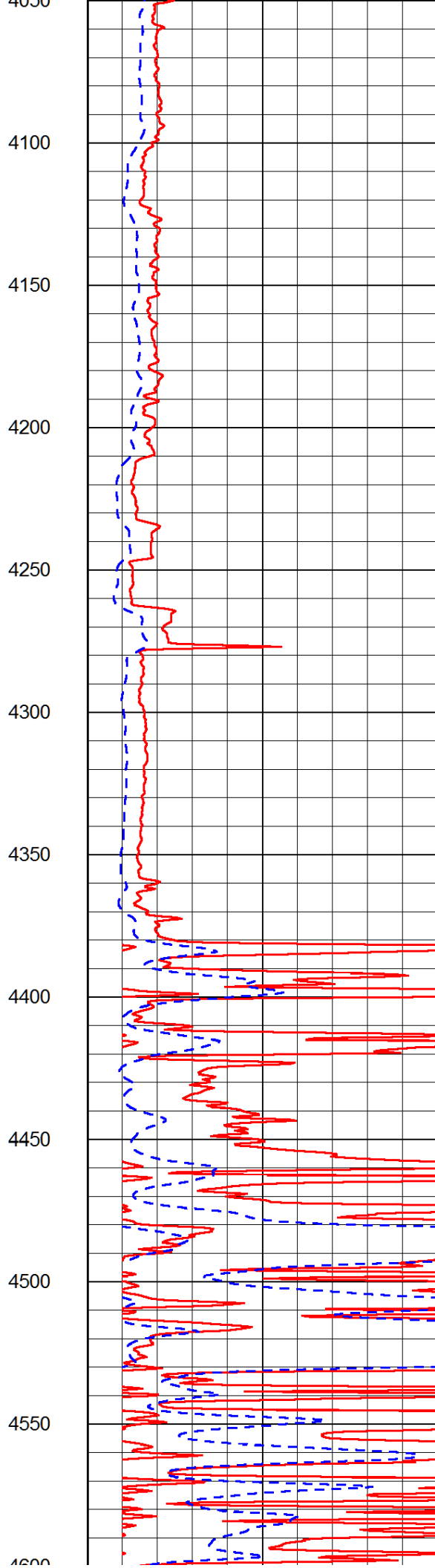
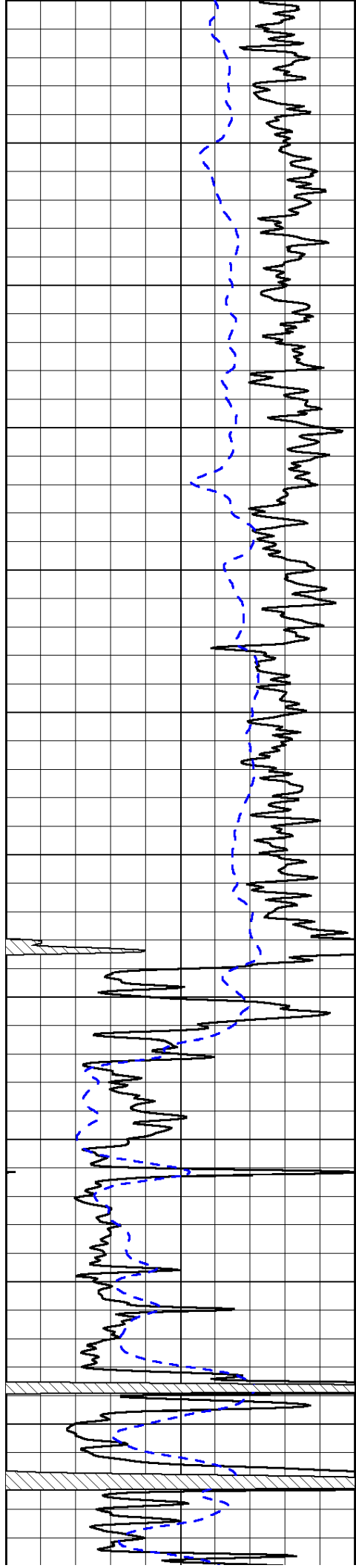


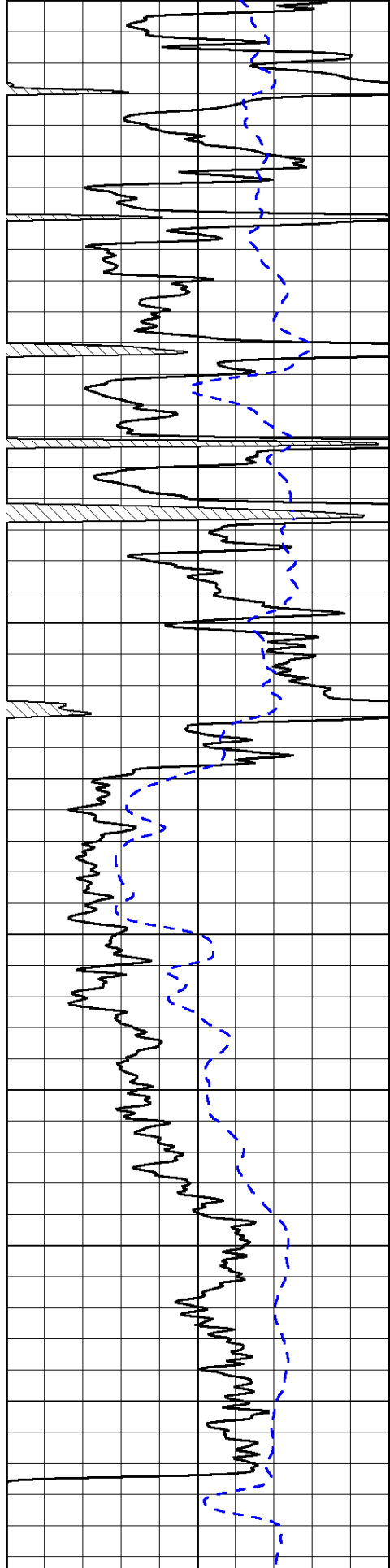




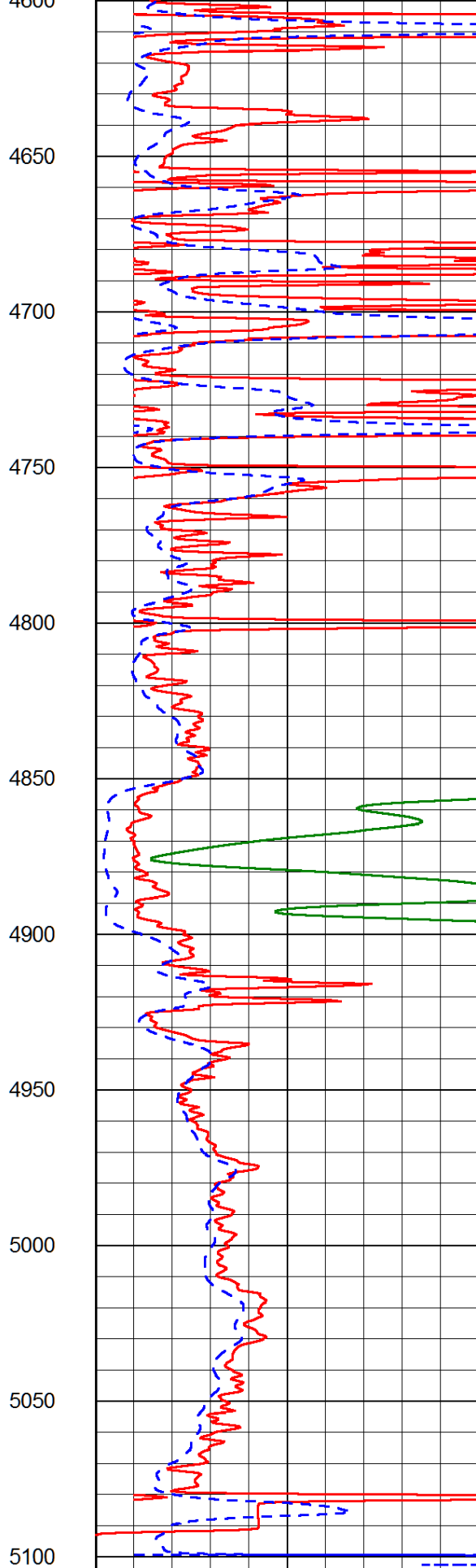




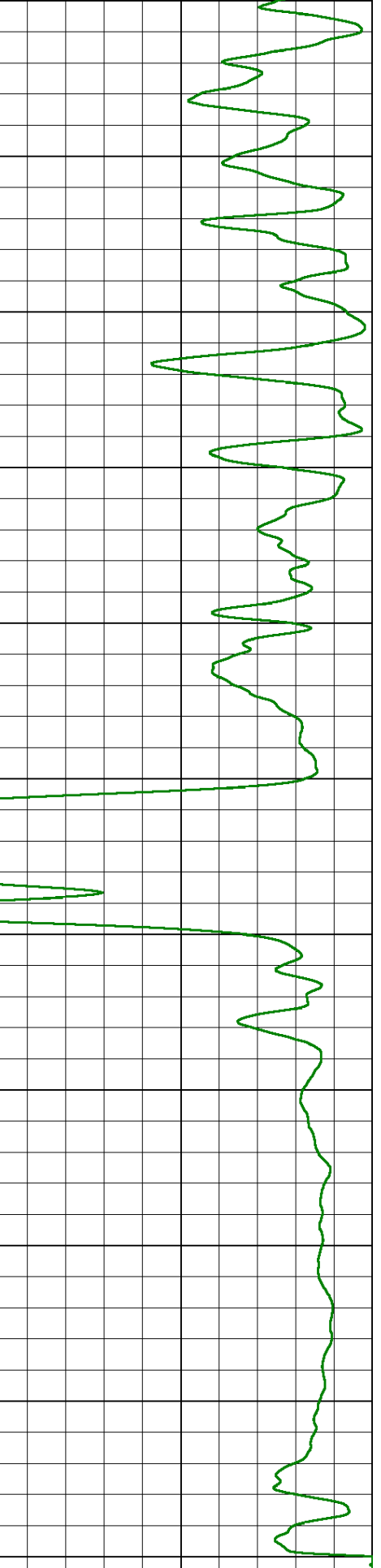




0 Gamma Ray (GAPI) 150
 -200 SP (mV) 0



0 Shallow Resistivity (Ohm-m) 50
 0 Deep Resistivity (Ohm-m) 50



1000 Conductivity (Ohm-m) 0
 15000 Line Tension (lb) 0

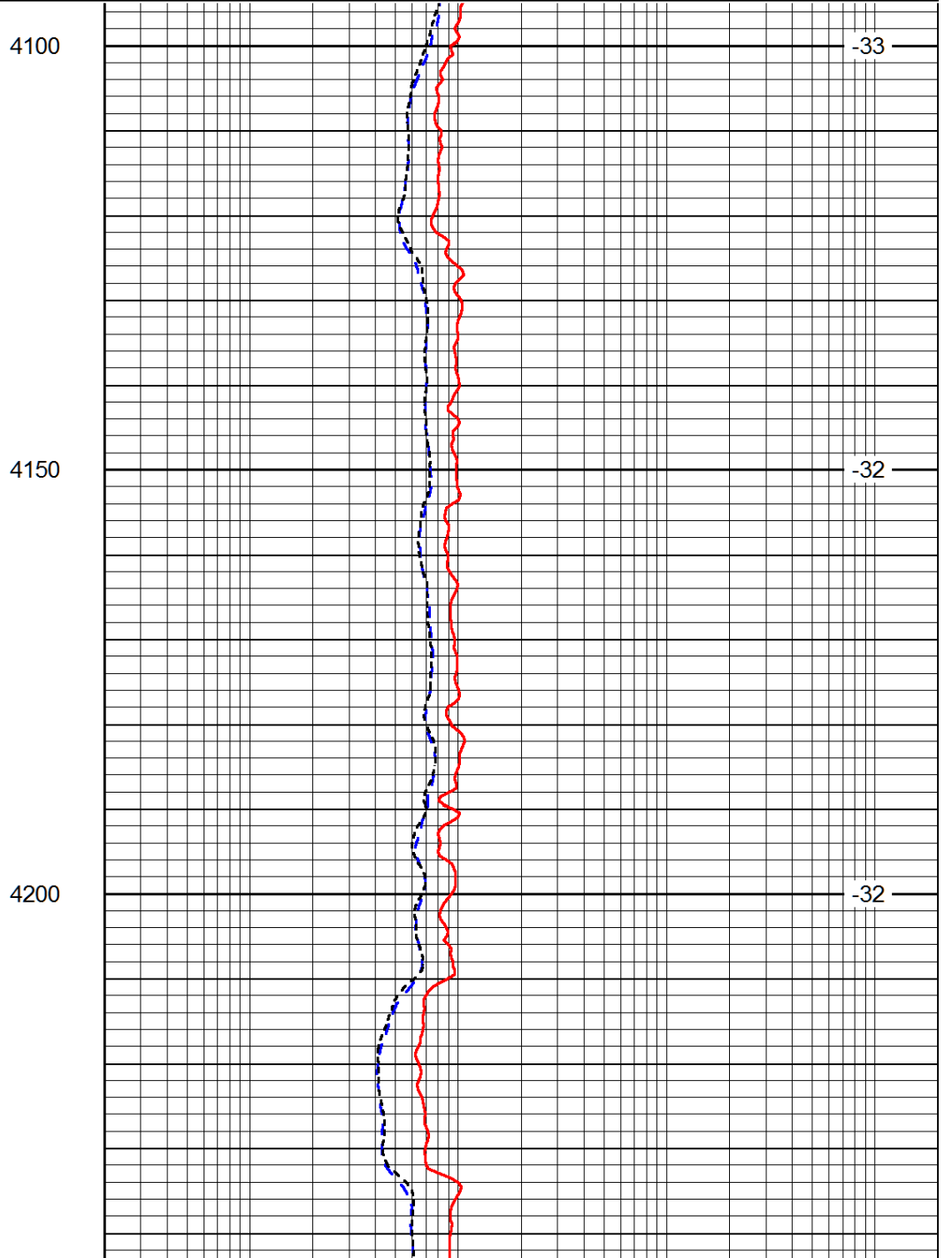
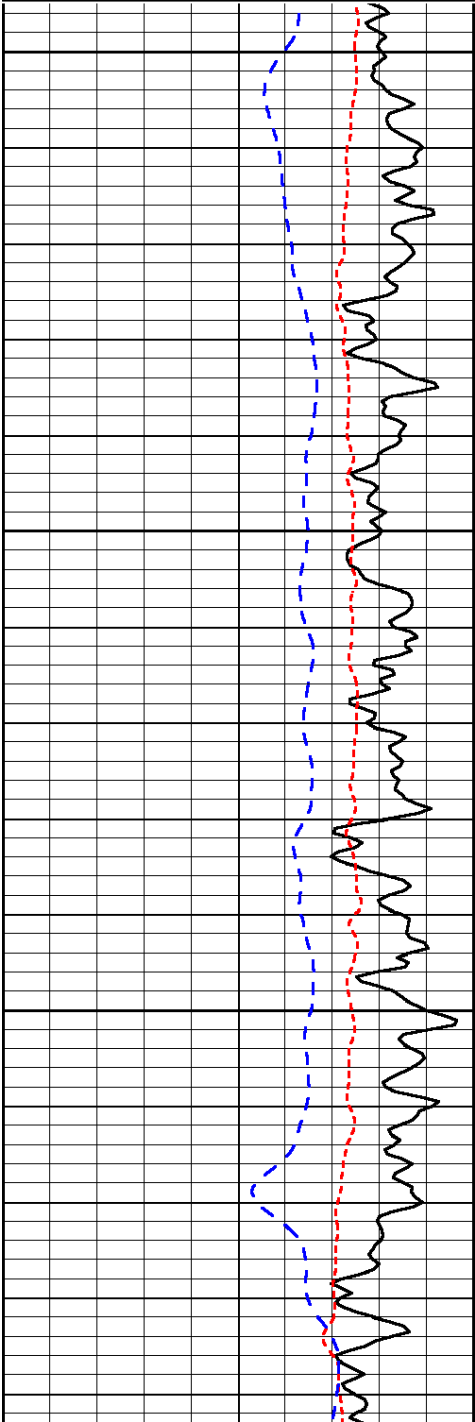
Shallow Resistivity		
50	(Ohm-m)	500
50	Deep Resistivity (Ohm-m)	500

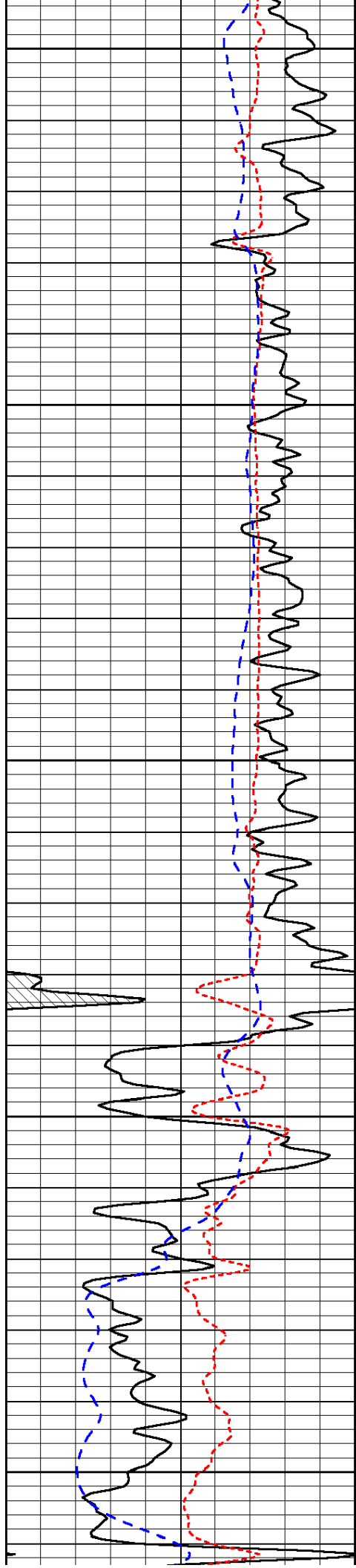
Database File: indian_041314hd.db
 Dataset Pathname: dil/indstck
 Presentation Format: dil
 Dataset Creation: Sun Apr 13 09:32:41 2014
 Charted by: Depth in Feet scaled 1:240

0	Gamma Ray (GAPI)	150
-160	RXO/RT	40
-200	SP (mV)	0

0.2	Deep Resistivity (Ohm-m)	2000
0.2	Medium Resistivity (Ohm-m)	2000
0.2	Shallow Resistivity (Ohm-m)	2000
10000	Line Tension (lb)	0

LSPD
(ft/min)





4250

4300

4350

4400

4450

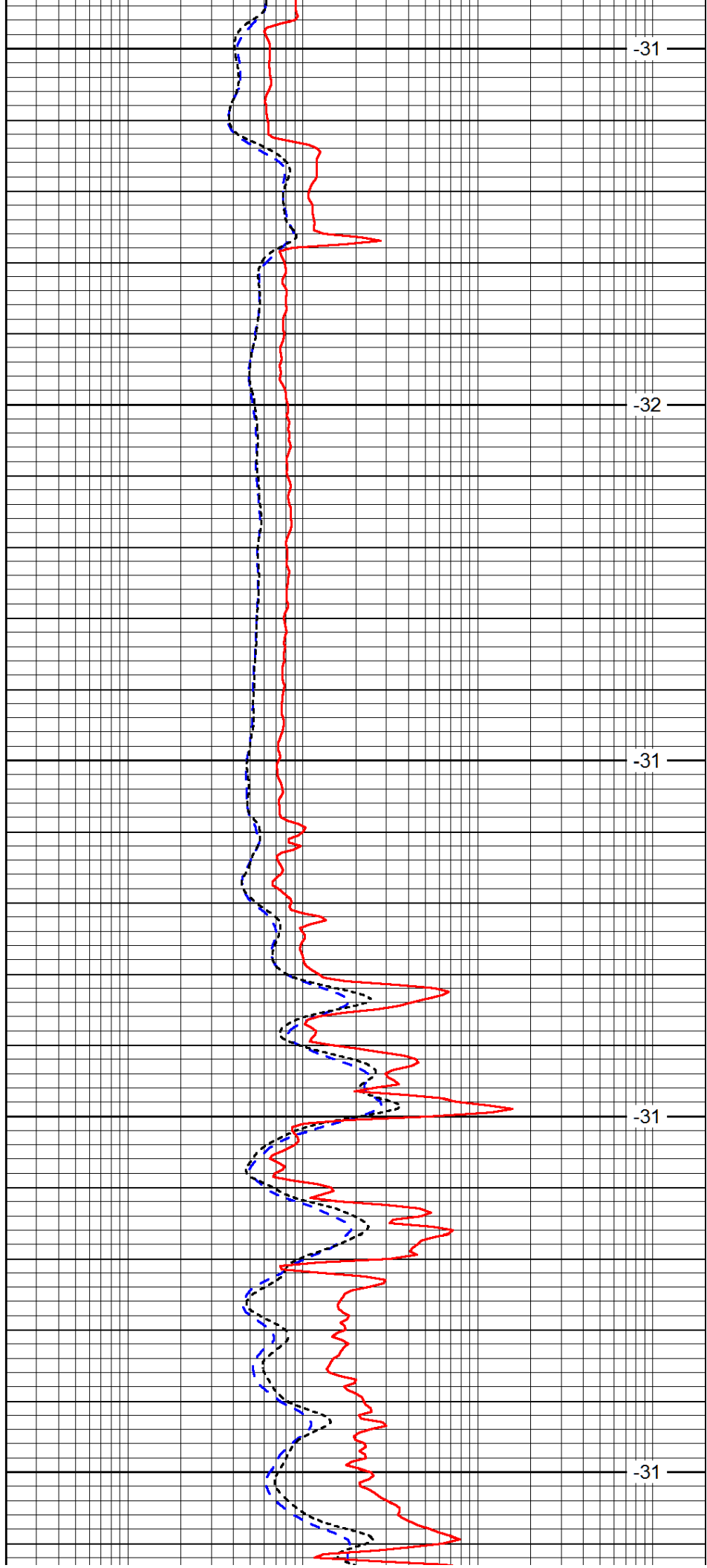
-31

-32

-31

-31

-31



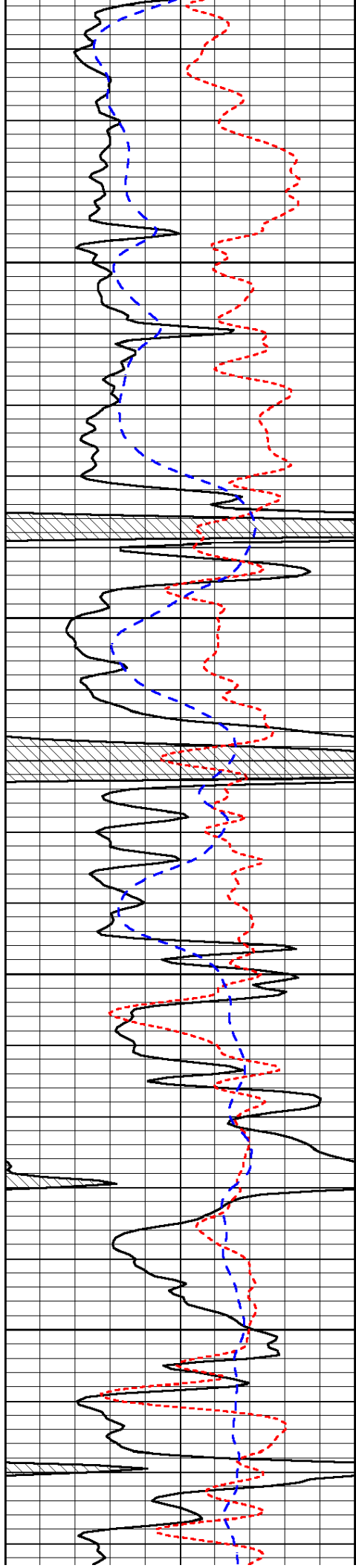
-31

-32

-31

-31

-31

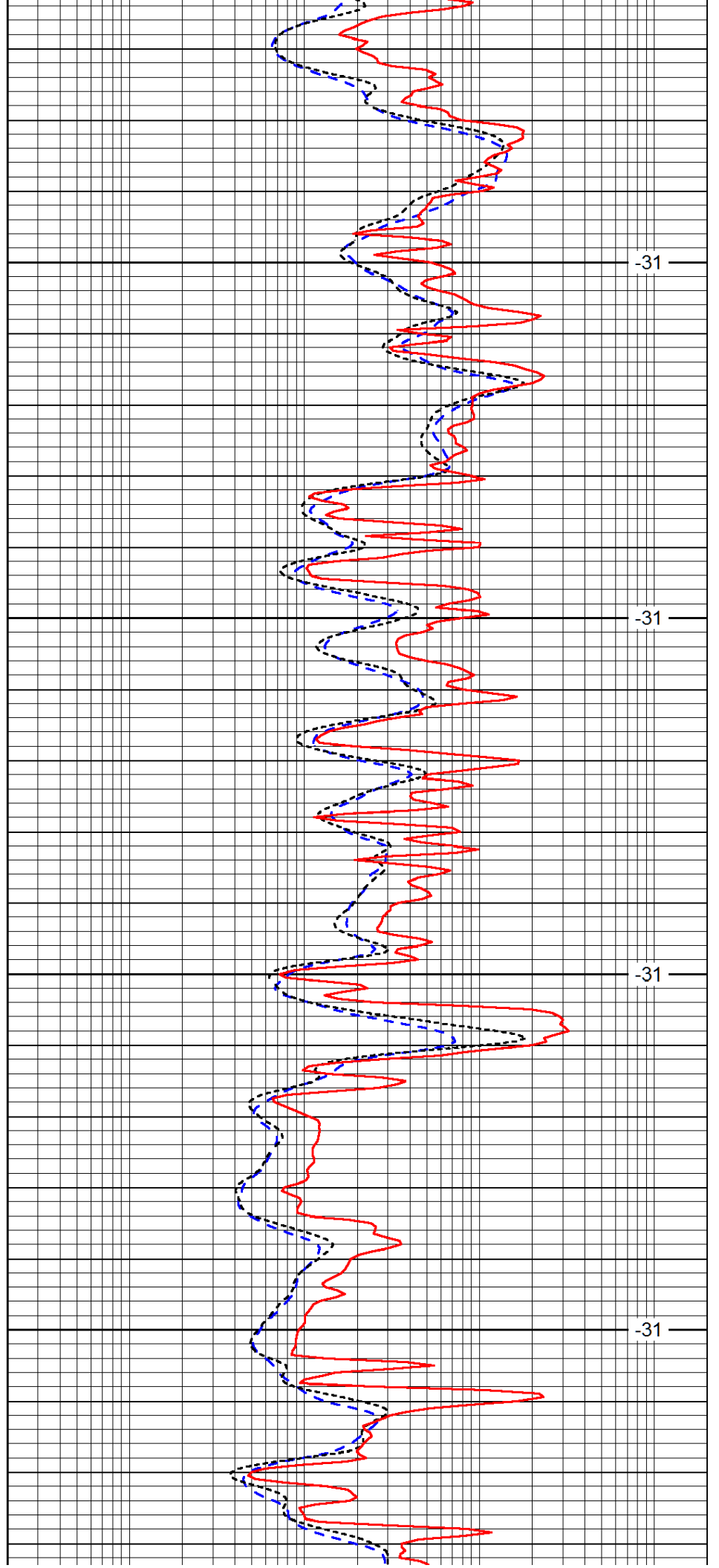


4500

4550

4600

4650

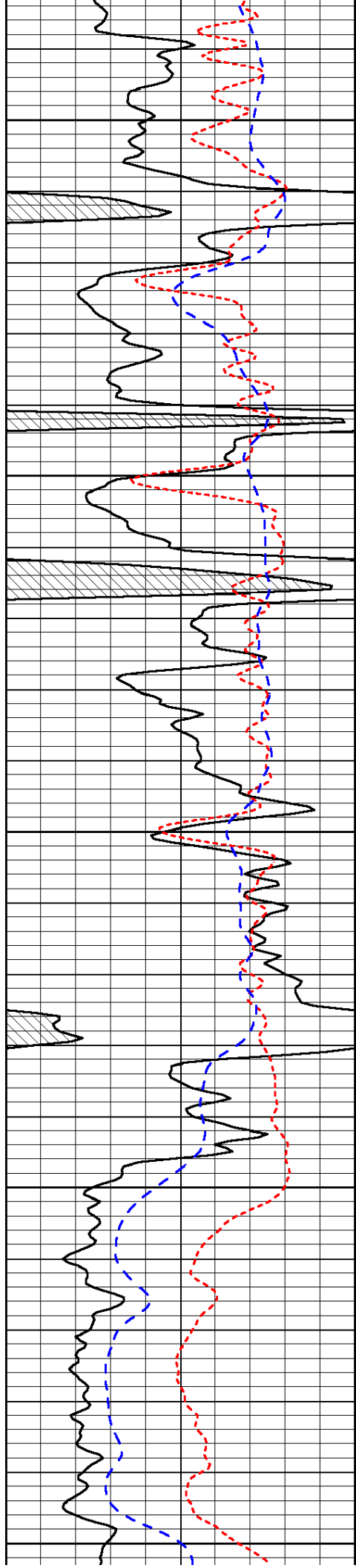


-31

-31

-31

-31



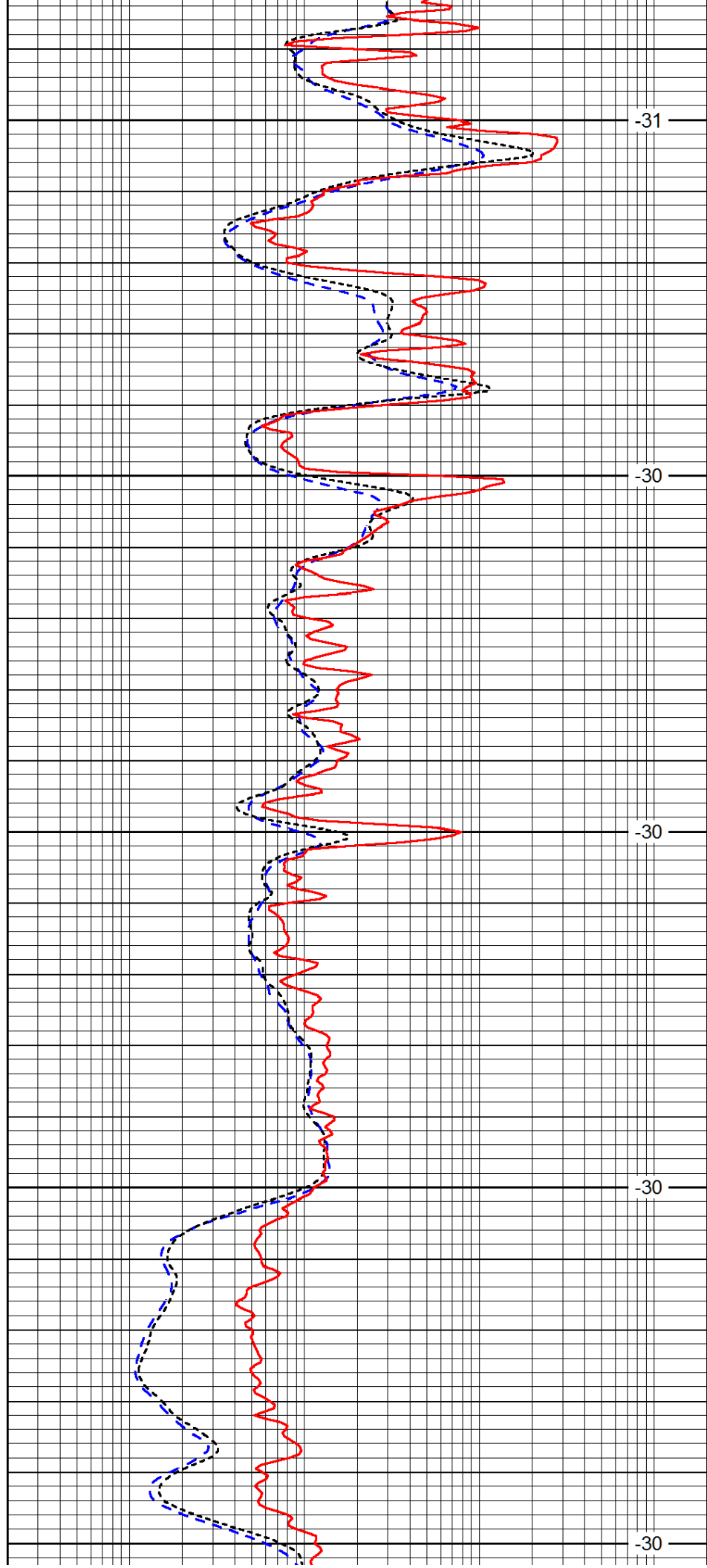
4700

4750

4800

4850

4900



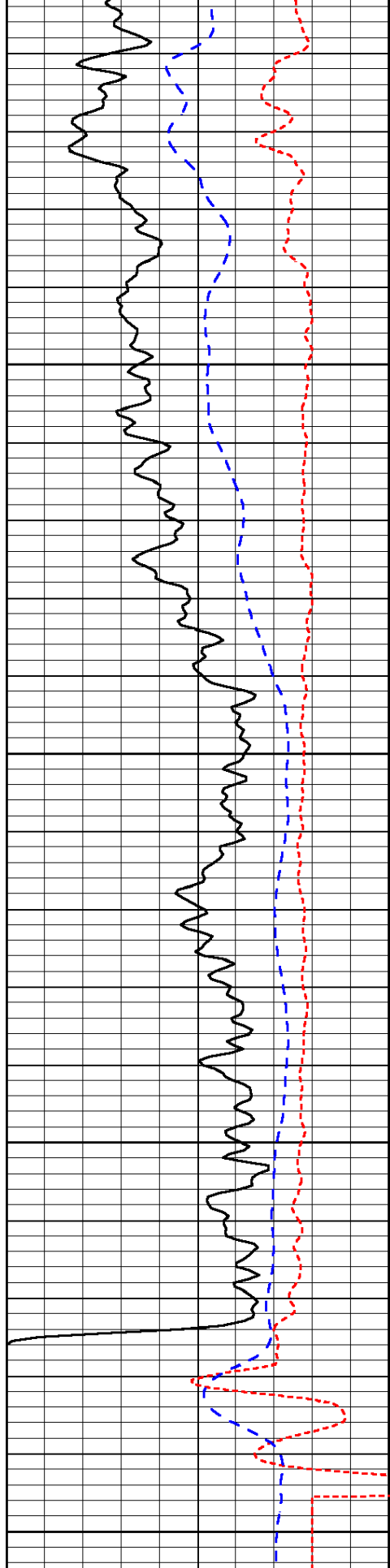
-31

-30

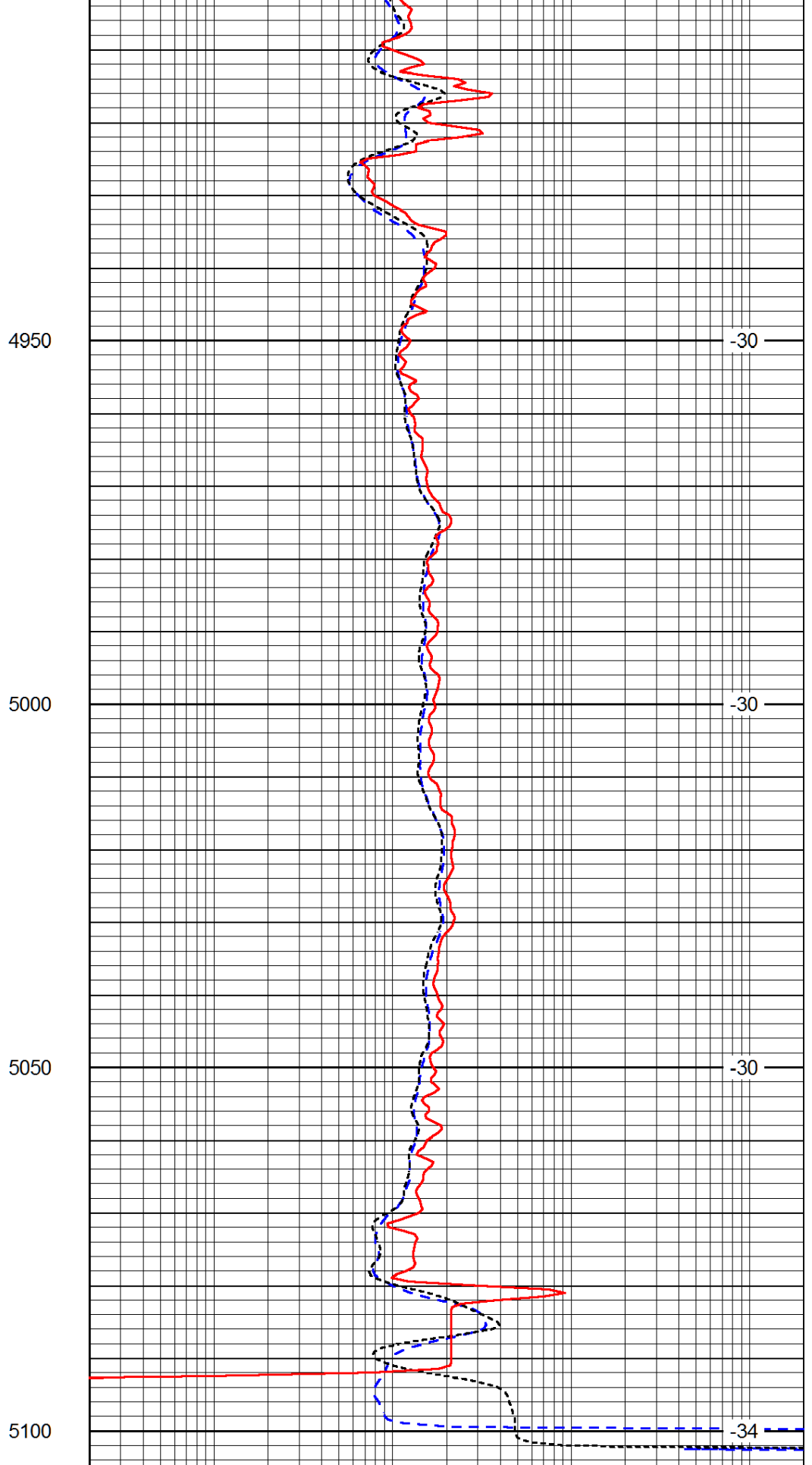
-30

-30

-30



0	Gamma Ray (GAPI)	150
-160	RXO/RT	40
-200	SP (mV)	0



0.2	Deep Resistivity (Ohm-m)	2000
0.2	Medium Resistivity (Ohm-m)	2000
0.2	Shallow Resistivity (Ohm-m)	2000
10000	Line Tension (lb)	0

LSPD
(ft/min)