



Pioneer Energy Services

Dual Compensated Porosity Log

API No.	15-007-24157-00-00		
Company	Indian Oil Company, Inc.		
Well	Share Trust #1		
Field	Unnamed		
County	Barber		
Location	1320' FSL & 330' FEL		
State	Kansas		
Other Services	DIL		
Sec:	15	Twp:	35S
Rge:	12W		

Permanent Datum	Ground Level	Elevation	1371
Log Measured From	Kelly Bushing	11 Ft. Above Perm. Datum	
Drilling Measured From	Kelly Bushing		
Date	4/13/2014		

Run Number	One		
Type Log	CNL / CDL		
Depth Driller	5100		
Depth Logger	5099		
Bottom Logged Interval	5078		
Top Logged Interval	4100		
Type Fluid In Hole	Chemical		
Salinity, PPM CL	4000		
Density	9.4		
Level	Full		
Max. Rec. Temp. F	129		
Operating Rig Time	3 Hours		
Equipment -- Location	91 Hays		
Recorded By	D. Schmidt		
Witnessed By	Scott Alberg		

Borehole Record				Casing Record			
Run No.	Bit	From	To	Size	Wgt.	From	To
One	12.25	00	855	8.625	23#	00	855
Two	7.875	855	TD				

<<< Fold Here >>>

All interpretations are opinions based on inferences from electrical or other measurements and we cannot and do not guarantee the accuracy or correctness of any interpretation, and we shall not, except in the case of gross or willful negligence on our part, be liable or responsible for any loss, costs, damages, or expenses incurred or sustained by anyone resulting from any interpretation made by any of our officers, agents or employees. These interpretations are also subject to our general terms and conditions set out in our current Price Schedule.

Comments

Thank you for using Log-Tech, Inc.
(785) 625-3858

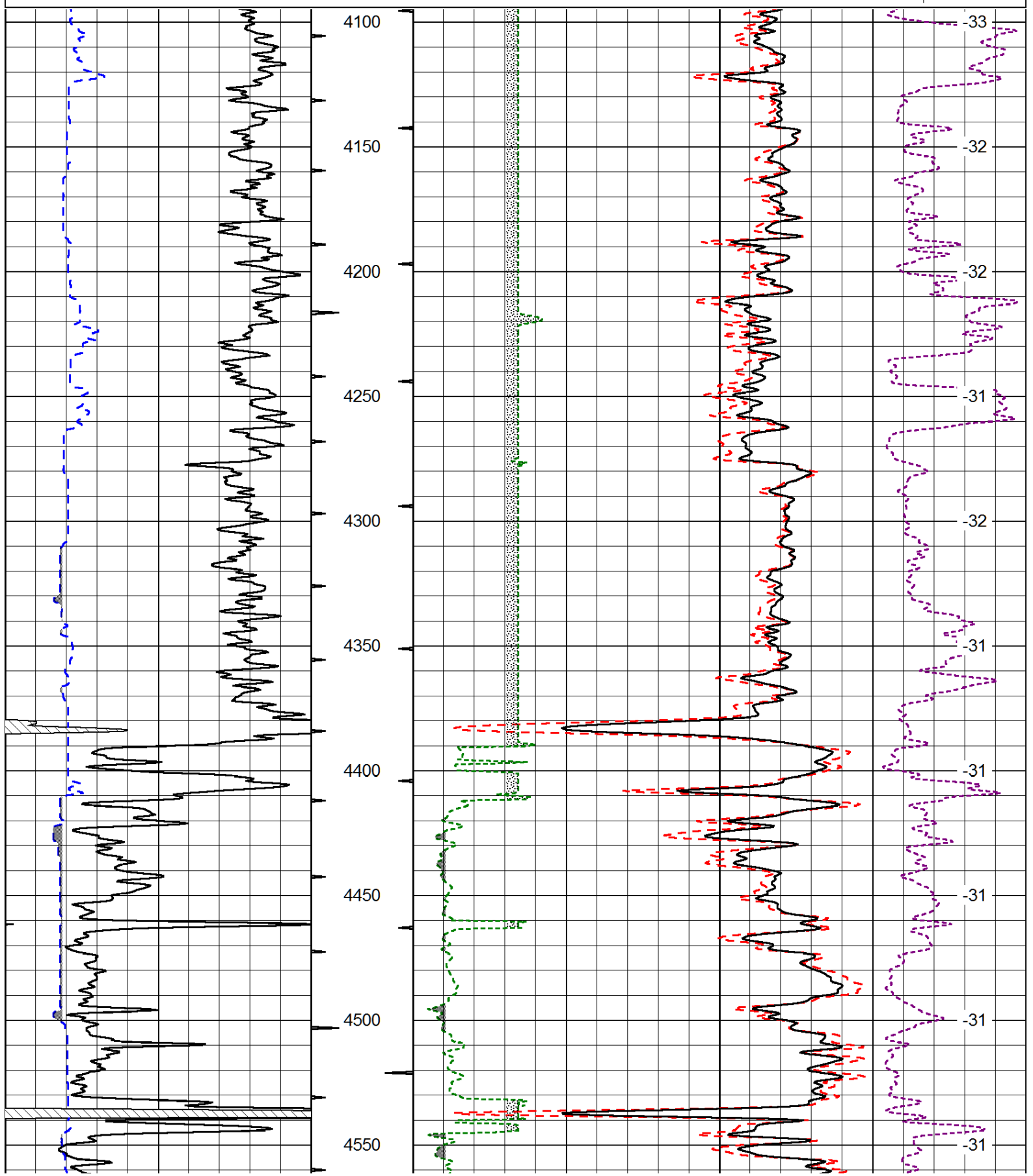
Hardtner,
2 East to Roundup Rd, 3/4 South,
West into

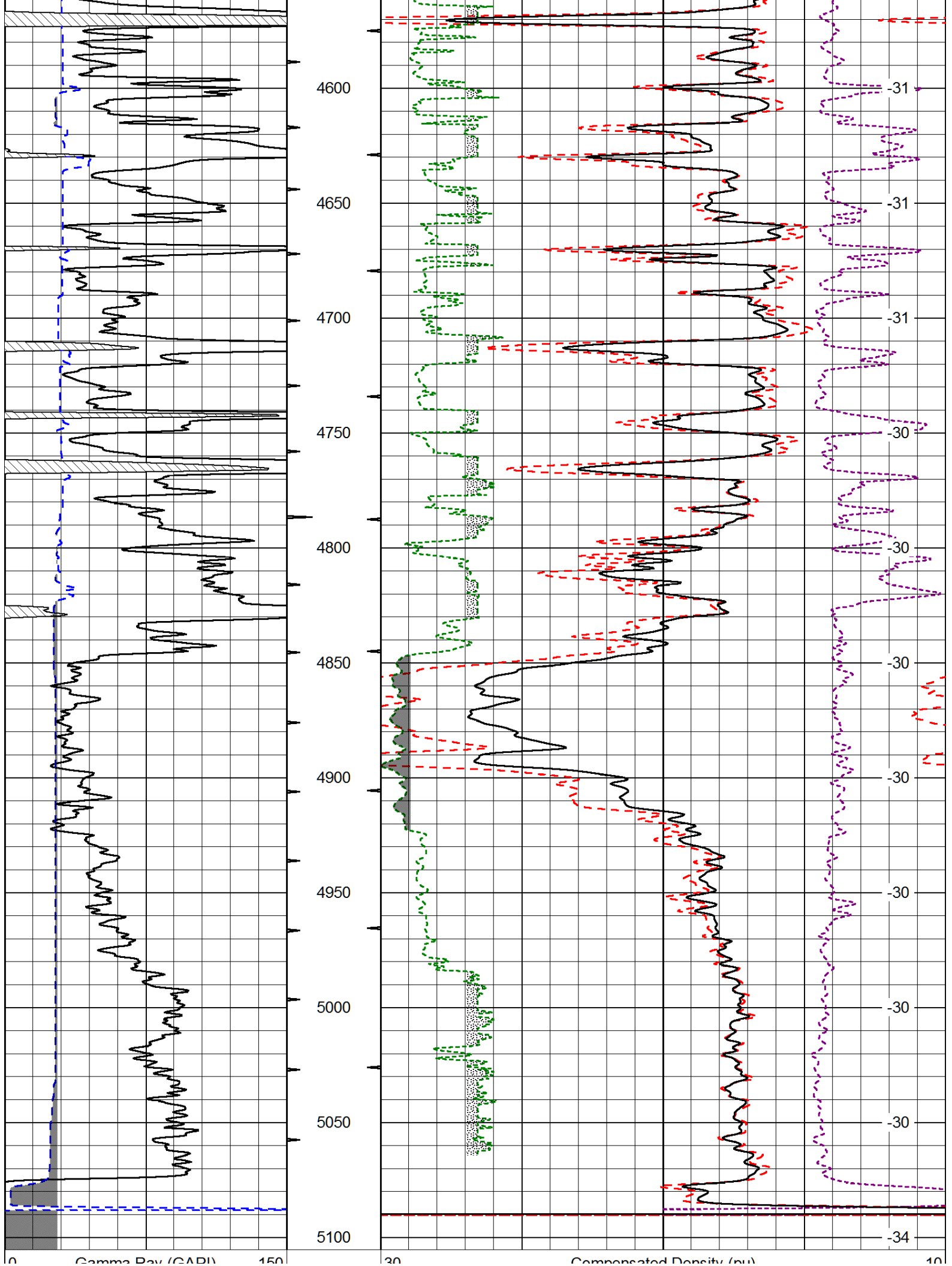
Database File: indian_041314hd.db
 Dataset Pathname: dil/indstck
 Presentation Format: cdl
 Dataset Creation: Sun Apr 13 09:32:41 2014
 Charted by: Depth in Feet scaled 1:600

0	Gamma Ray (GAPI)	150
6	Caliper (in)	16

30	Compensated Density (pu)		-10
2	Bulk Density (g/cc)		3
15000	Line Tension (lb)		0
2.625	DGA (g/cc)	3.425	-0.25
	Correction (g/cc)		0.25

LSPD
(ft/min)





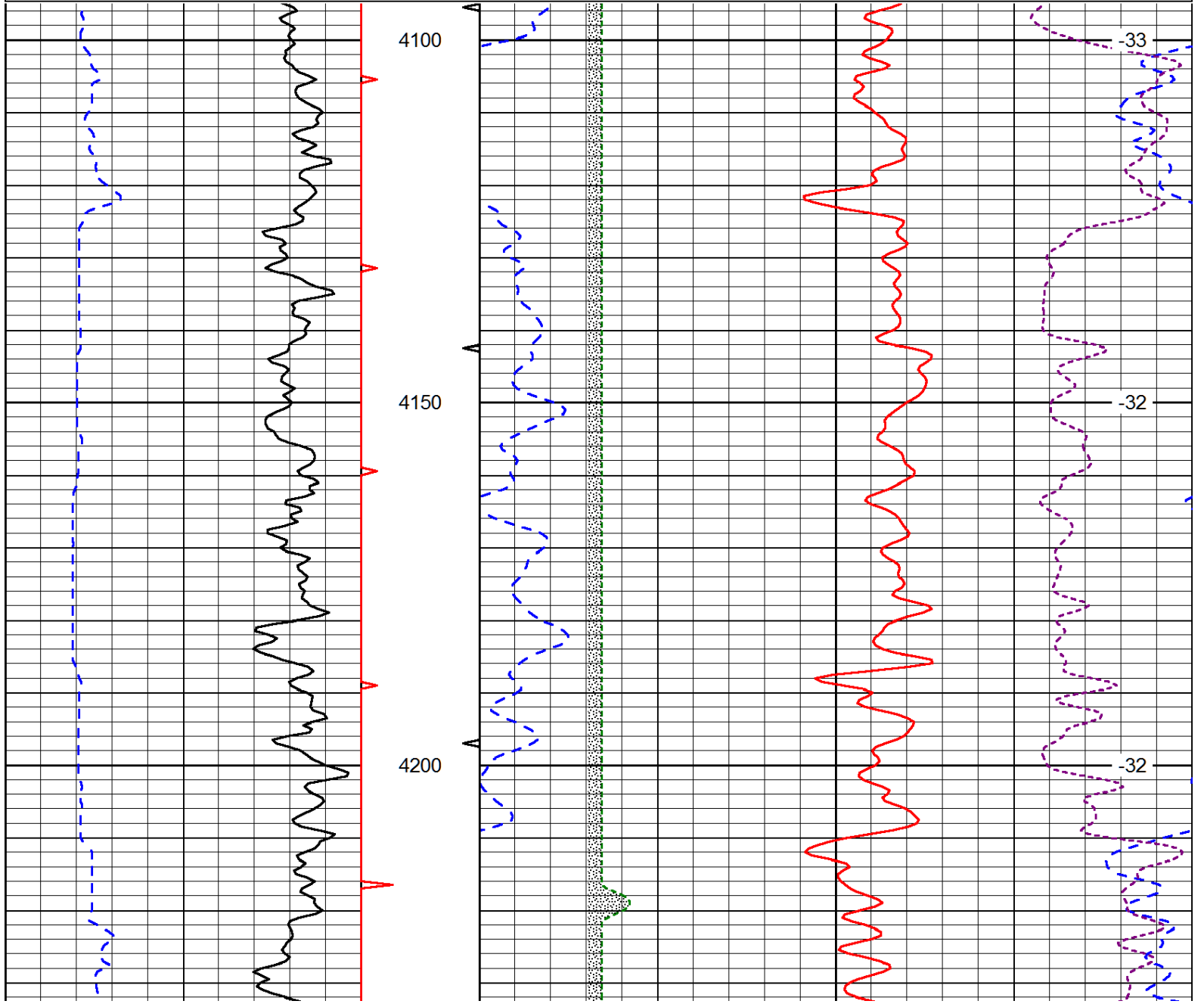
6	Gamma Ray (GAPI)	150
6	Caliper (in)	16

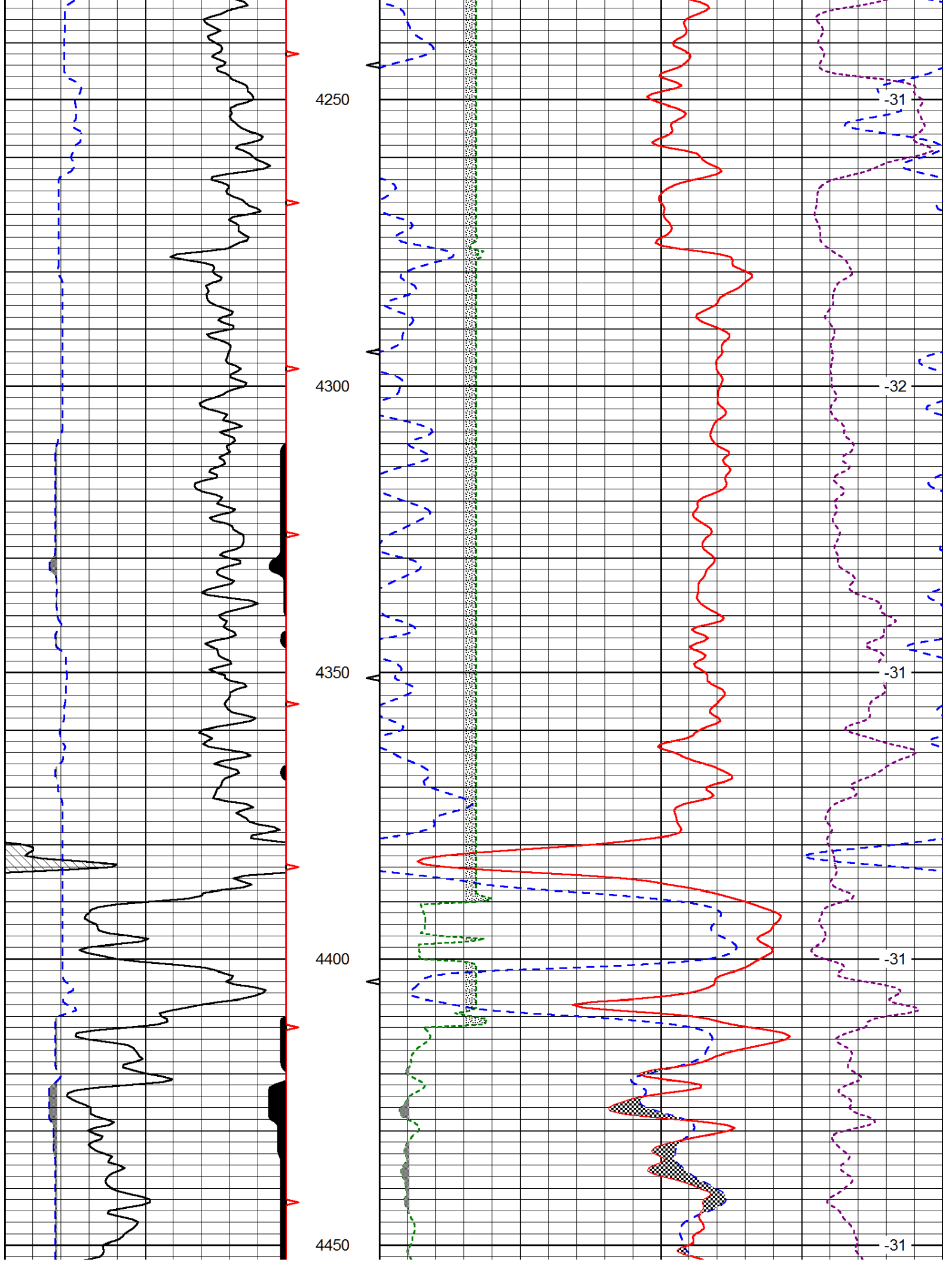
30	Compensated Density (pu)			-10	
2	Bulk Density (g/cc)			3	
15000	Line Tension (lb)			0	
2.625	DGA (g/cc)	3.425	-0.25	Correction (g/cc)	0.25
				LSPD (ft/min)	

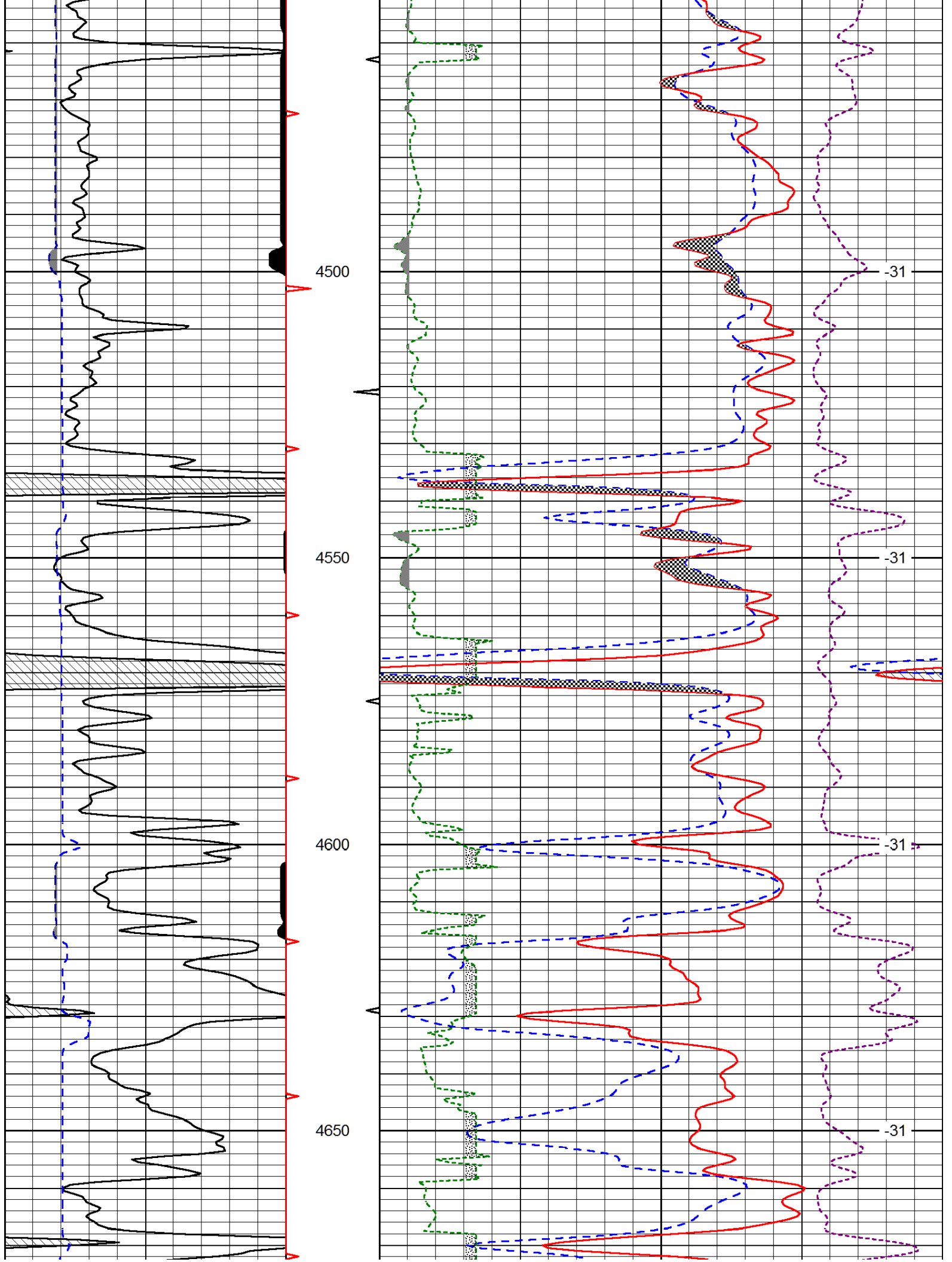
Database File: indian_041314hd.db
 Dataset Pathname: dil/indstck
 Presentation Format: cndlspec
 Dataset Creation: Sun Apr 13 09:32:41 2014
 Charted by: Depth in Feet scaled 1:240

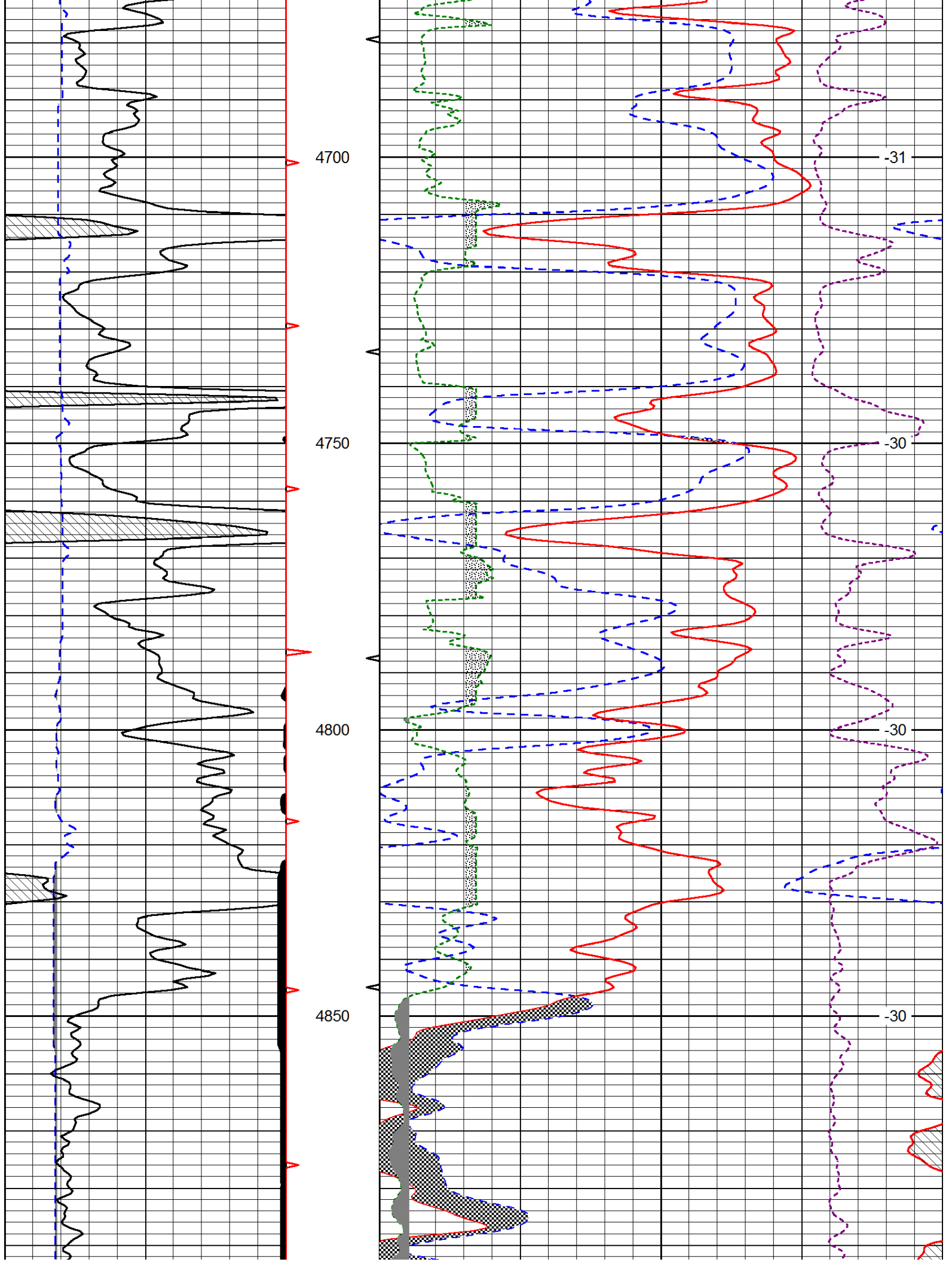
0	Gamma Ray (GAPI)	150
6	Caliper (in)	16

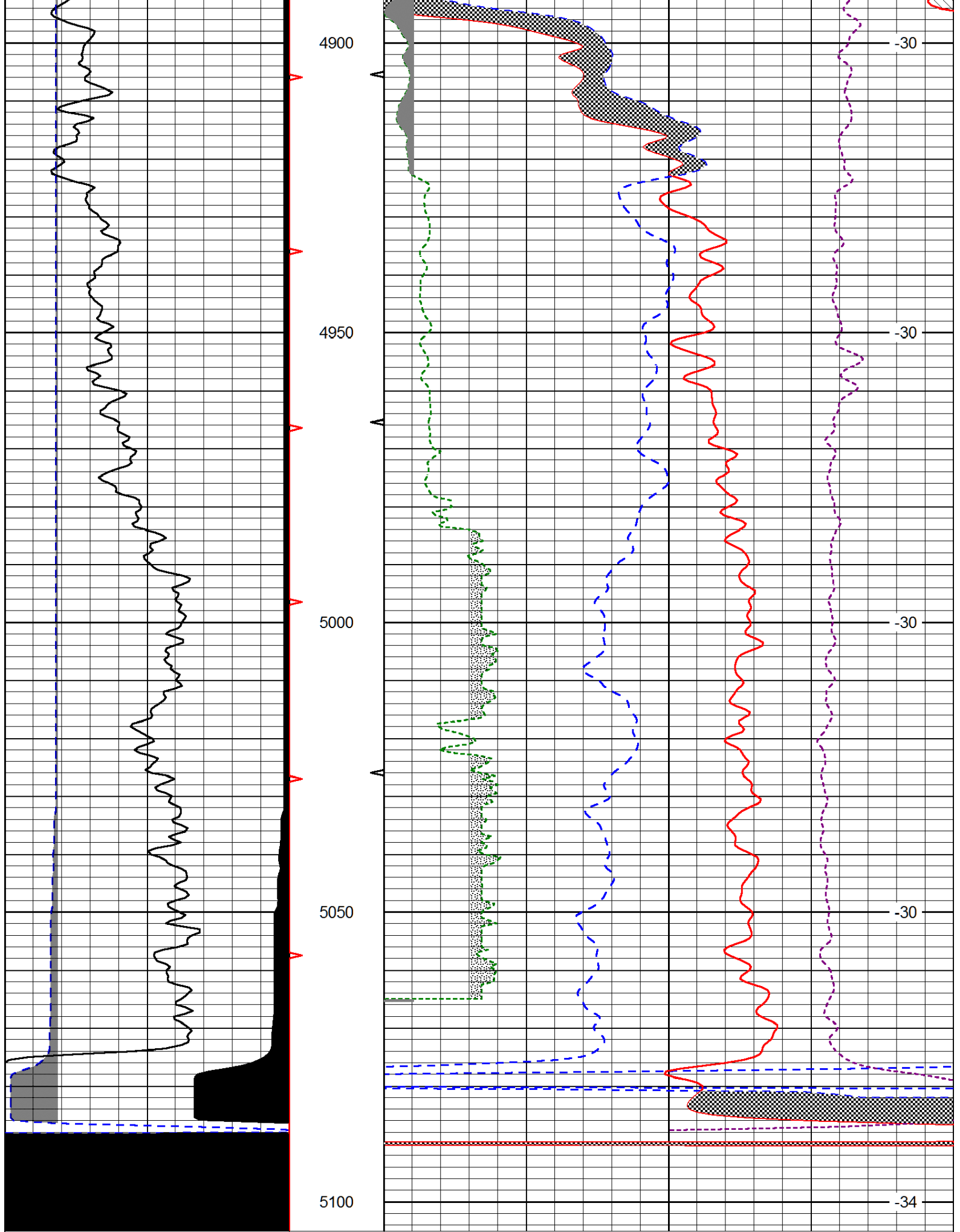
30	CNPOR (pu)			-10	
30	Compensated Density (2.71 ma) (pu)			-10	
2.625	DGA (g/cc)	3.425	-0.25	Correction (g/cc)	0.25
10000	Line Tension (lb)			0	
				LSPD (ft/min)	











0 Gamma Ray (GAPI) 150

6 Caliper (in) 16

30 CNPOR (pu) -10

30 Compensated Density (2.71 ma) (nu) -10

0	Sampler (in)	10
---	--------------	----

00	Compensated Density (2.71 ma) (pa)			10
2.625	DGA (g/cc)	3.425	-0.25	Correction (g/cc) 0.25
10000	Line Tension (lb)			0

LSPD (ft/min)
