



Pioneer Energy Services

Dual Induction Log

15-007-23962-00-00

API No.

Company **N-10 Exploration, LLC**

Well **Medicine River Ranch 'F' #1**

Field **Landis**
County **Barber** State **Kansas**

Location **2200' FSL & 880' FWL**

Other Services
CNL/CDL

Sec: **14** Twp: **34S** Rge: **11W**

Permanent Datum **Ground Level** Elevation **1369**

Log Measured From **Kelly Bushing** 10 Ft. Above Perm. Datum

Drilling Measured From **Kelly Bushing** K.B. 1379
D.F. 1369
G.L.

Date **11/5/2012**

Run Number **One**

Depth Driller **5025**

Depth Logger **5027**

Bottom Logged Interval **5026**

Top Log Interval **250**

Casing Driller **8.625 @ 256**

Casing Logger **257**

Bit Size **7.875**

Type Fluid in Hole **Chemical**

Salinity, ppm CL **4000**

Density / Viscosity **9.1 51**

pH / Fluid Loss **9.0 9.6**

Source of Sample **Flowline**

Rm @ Meas. Temp **0.60 @ 59**

Rmf @ Meas. Temp **0.45 @ 59**

Rmc @ Meas. Temp **0.81 @ 59**

Source of Rmf / Rmc **Charts**

Rm @ BHT **0.28 @ 128**

Operating Rig Time **3 Hours**

Max Rec. Temp. F **128**

Equipment Number **91**

Location **Hays**

Recorded By **D. Schmidt**

Witnessed By **Tim Pierce**

<<< Fold Here >>>

All interpretations are opinions based on inferences from electrical or other measurements and we cannot and do not guarantee the accuracy or correctness of any interpretation, and we shall not, except in the case of gross or willful negligence on our part, be liable or responsible for any loss, costs, damages, or expenses incurred or sustained by anyone resulting from any interpretation made by any of our officers, agents or employees. These interpretations are also subject to our general terms and conditions set out in our current Price Schedule.

Comments

Thank you for using Log-Tech, Inc.
(785) 625-3858
Medicine Lodge,
South to Gerlane, East to Bethel, South to Scott Canyon,
1 West, 1/2 South along West side of fence line,
East & South into

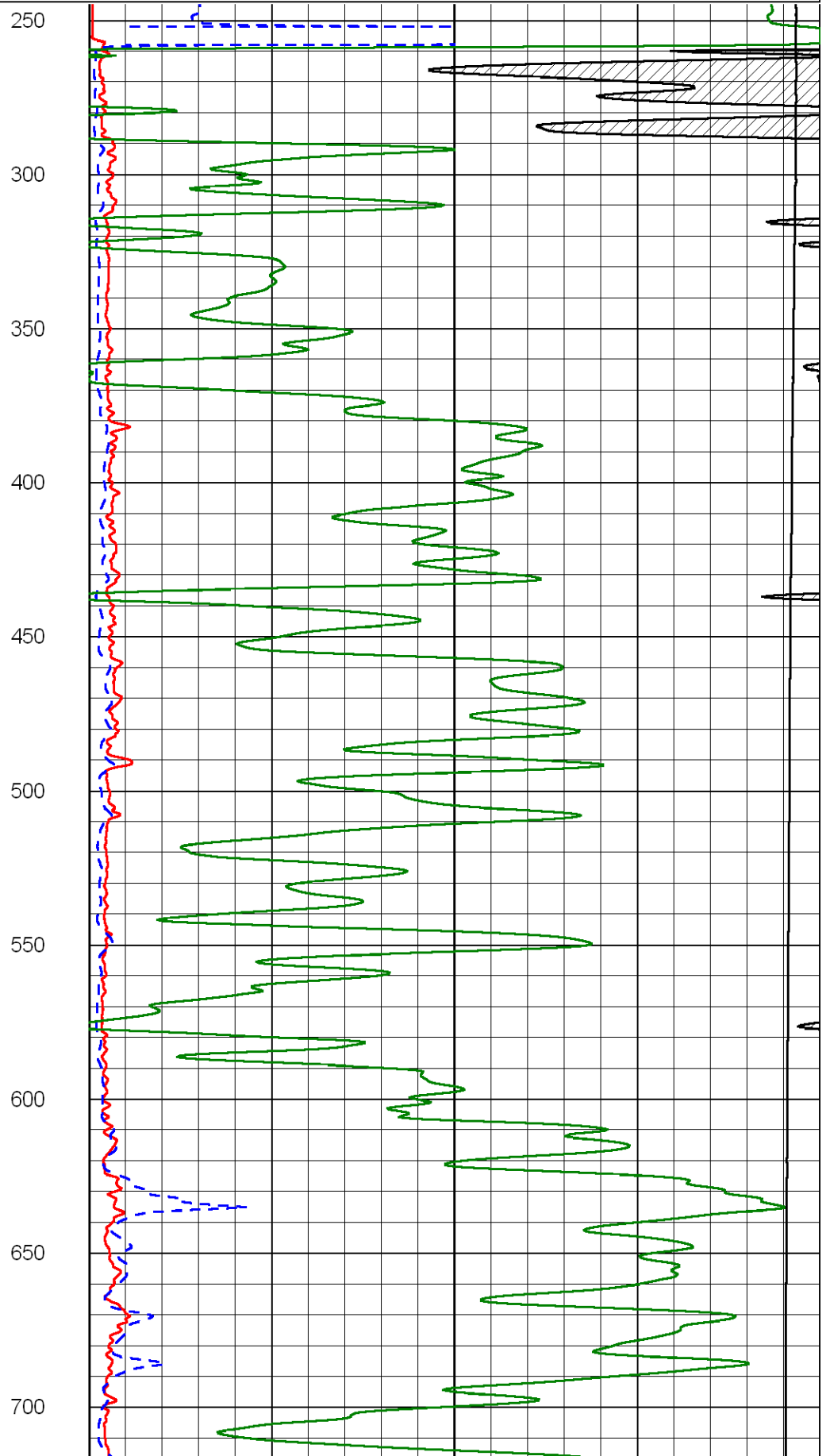
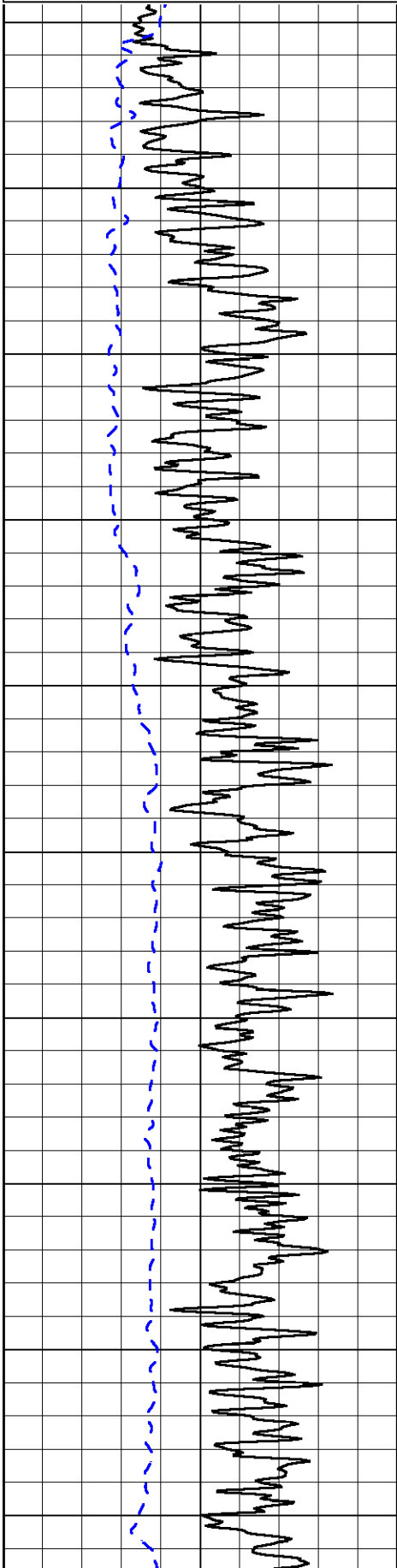
Database File: n10_110512hd.db
Dataset Pathname: dil/n10stack
Presentation Format: dil2in
Dataset Creation: Mon Nov 05 22:11:13 2012
Charted by: Depth in Feet scaled 1:600

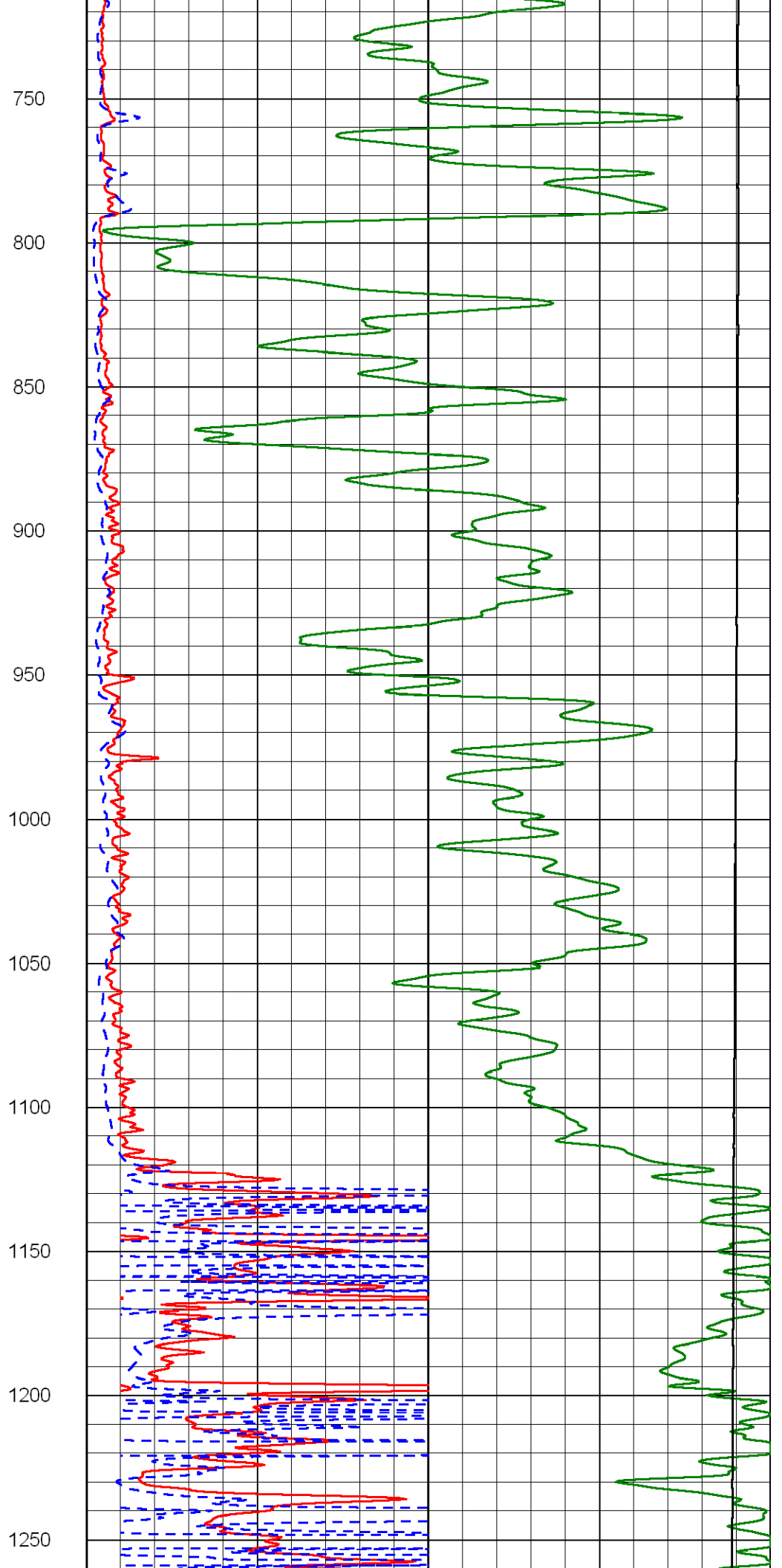
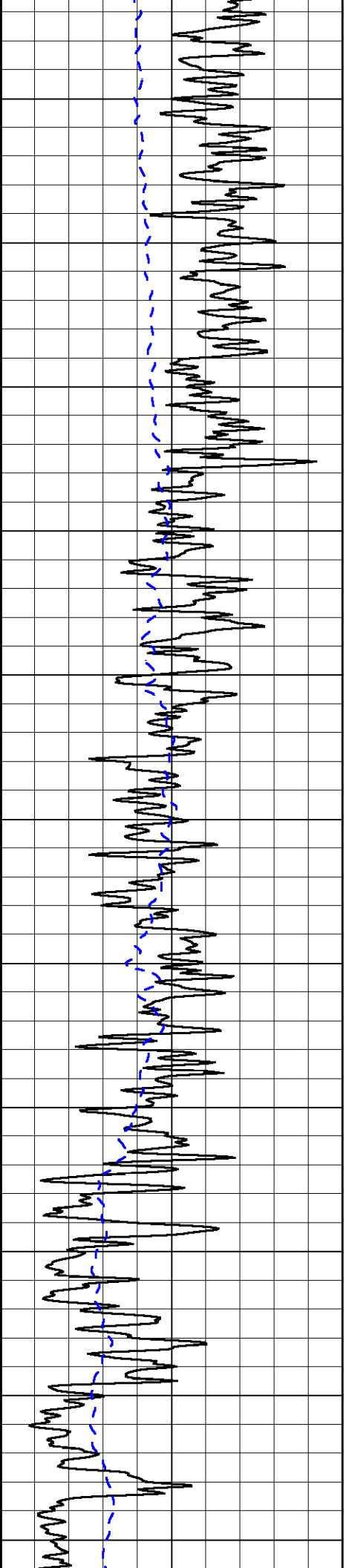
0 Gamma Ray 150
-200 SP 0

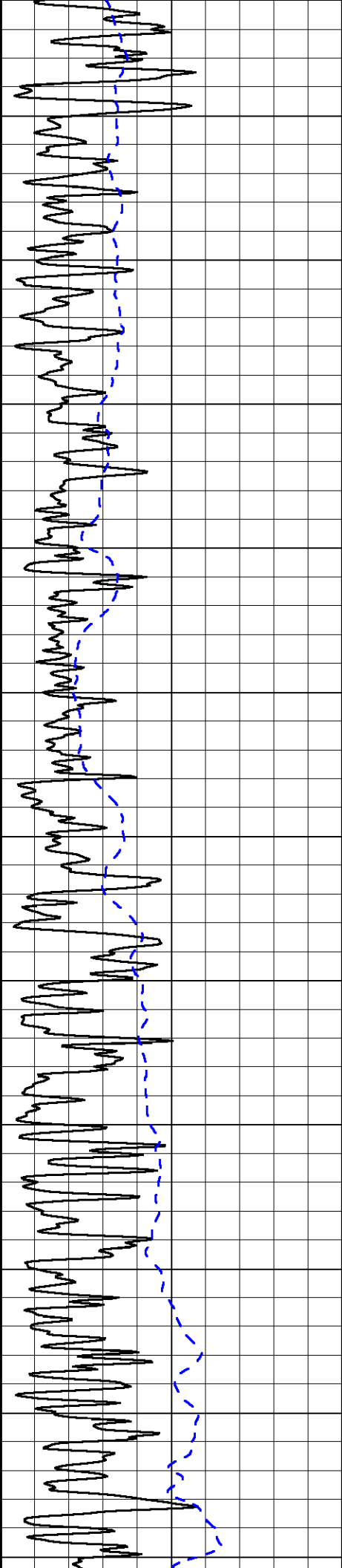
0 Shallow Resistivity 50
0 Deep Resistivity 50

1000 Conductivity 0
15000 Line Tension 0

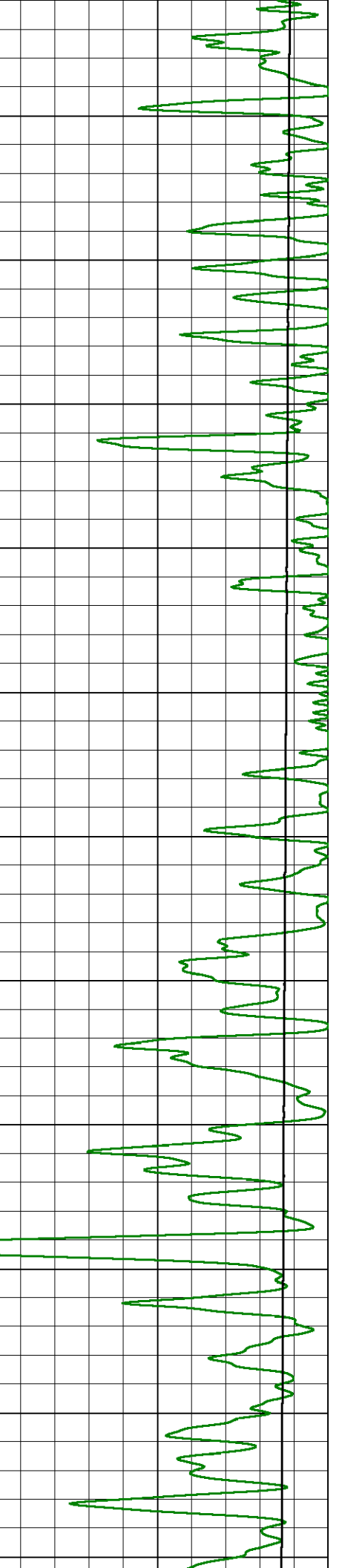
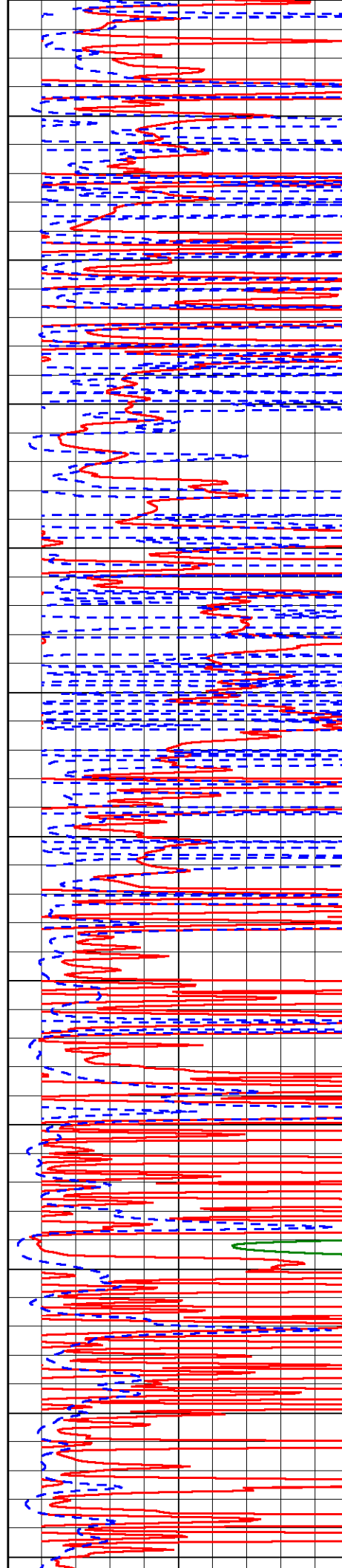
50 Shallow Resistivity 500
50 Deep Resistivity 500

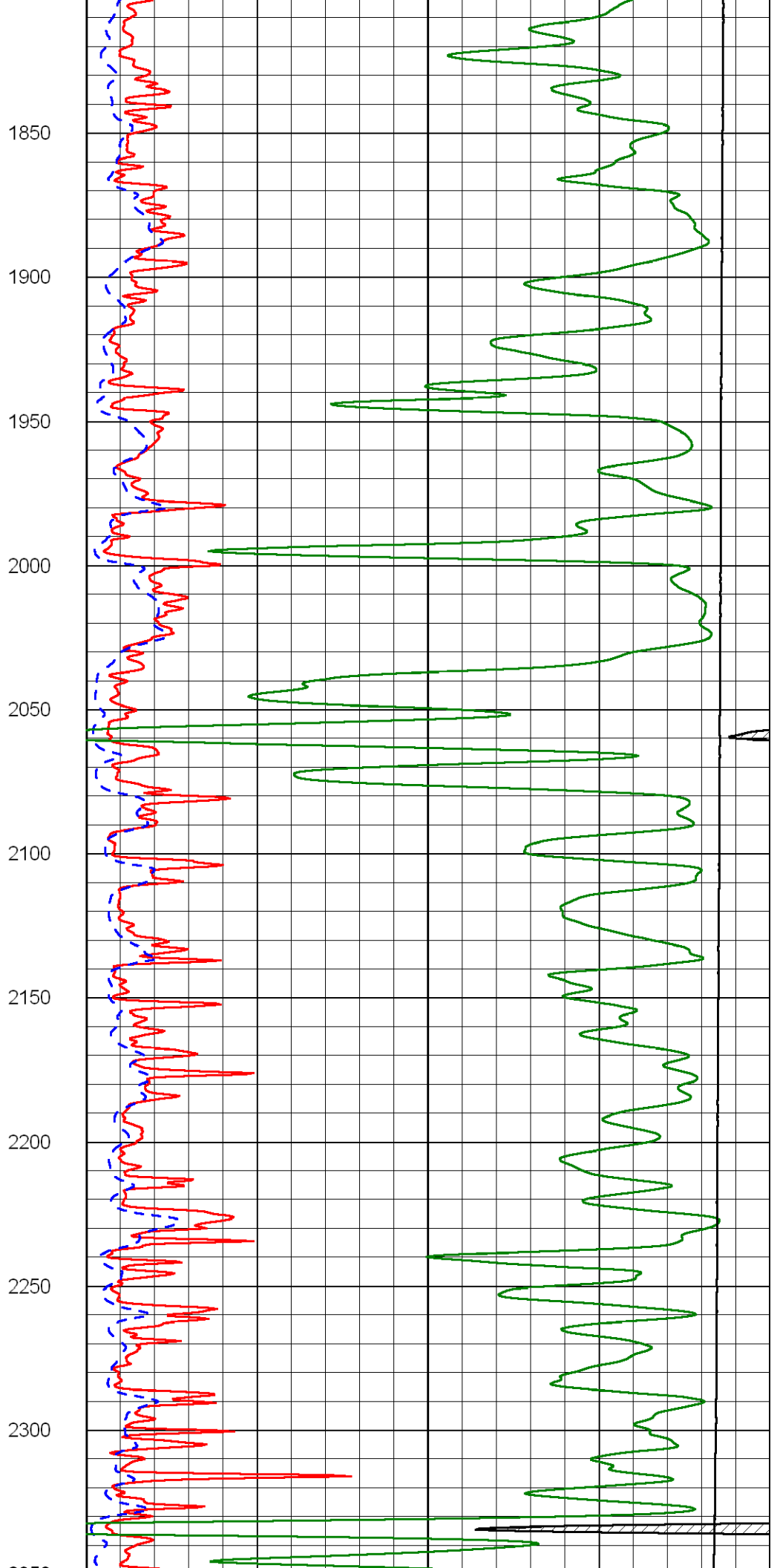
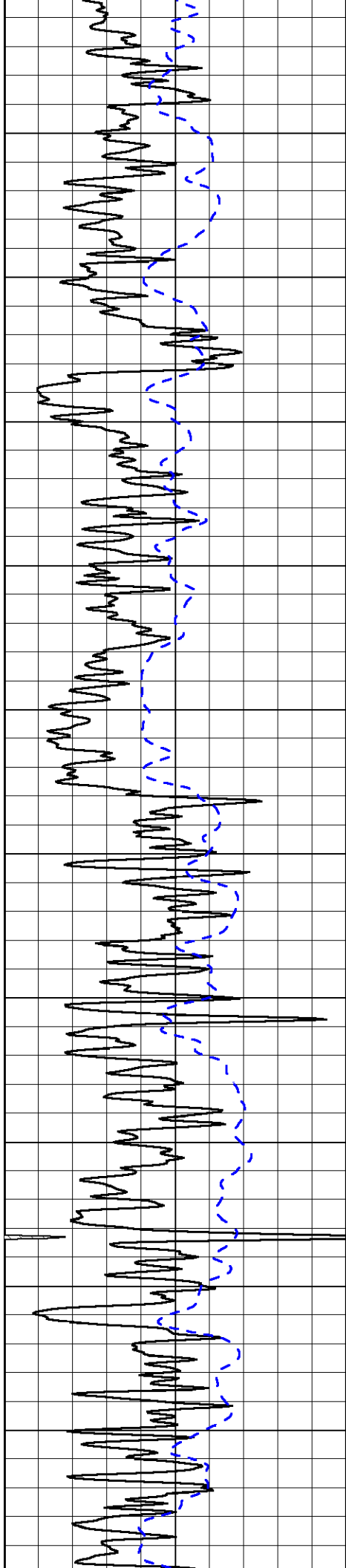


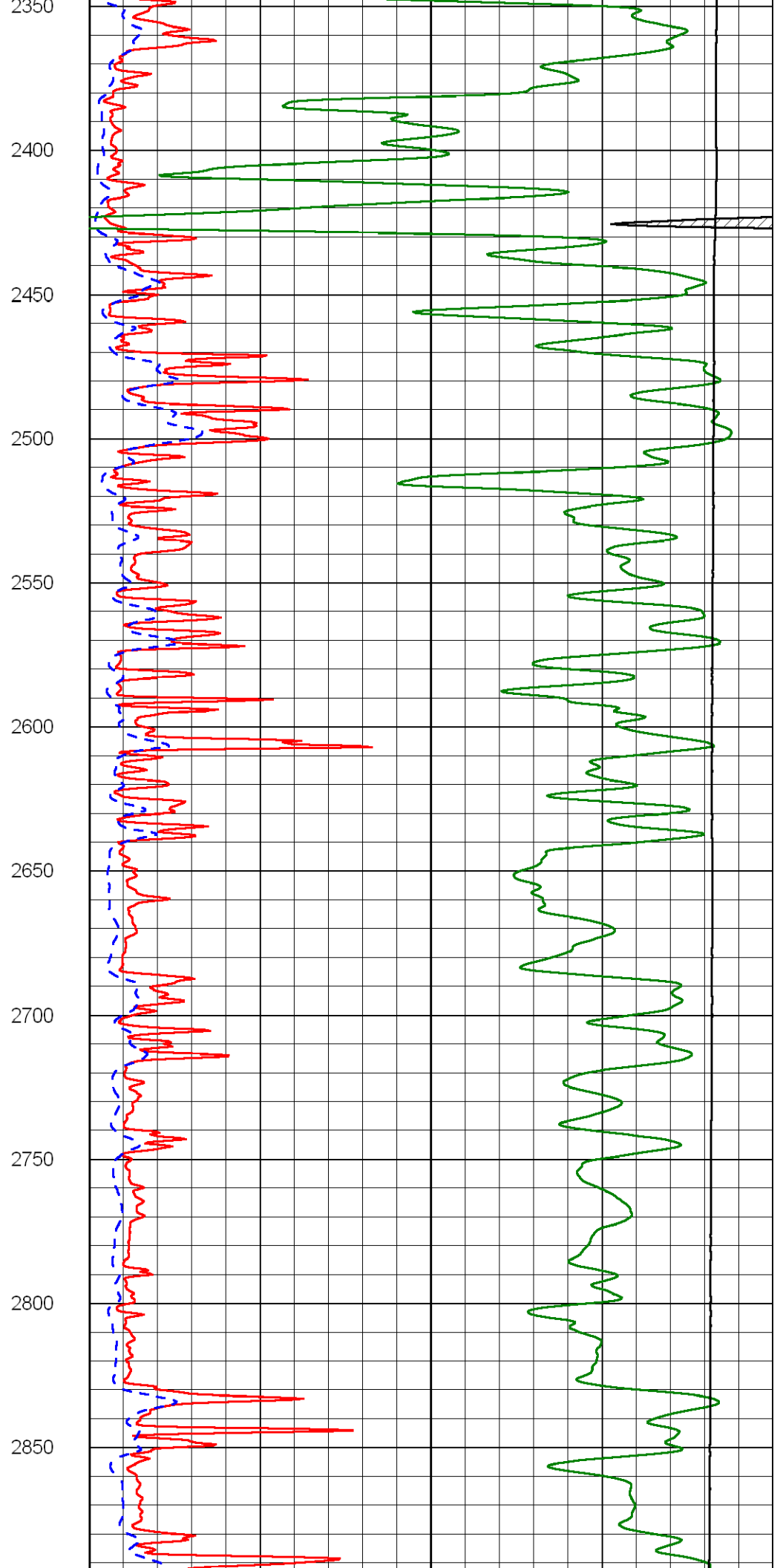
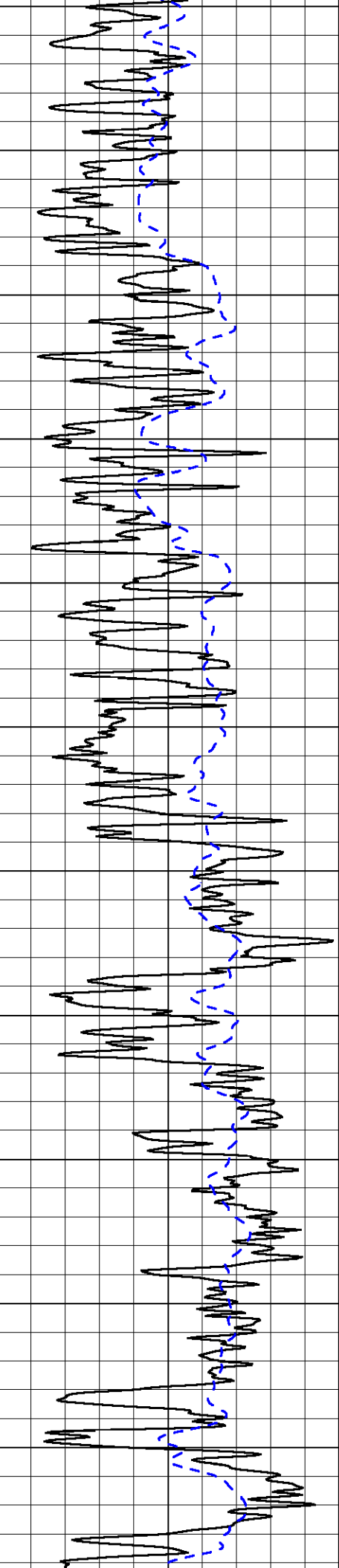


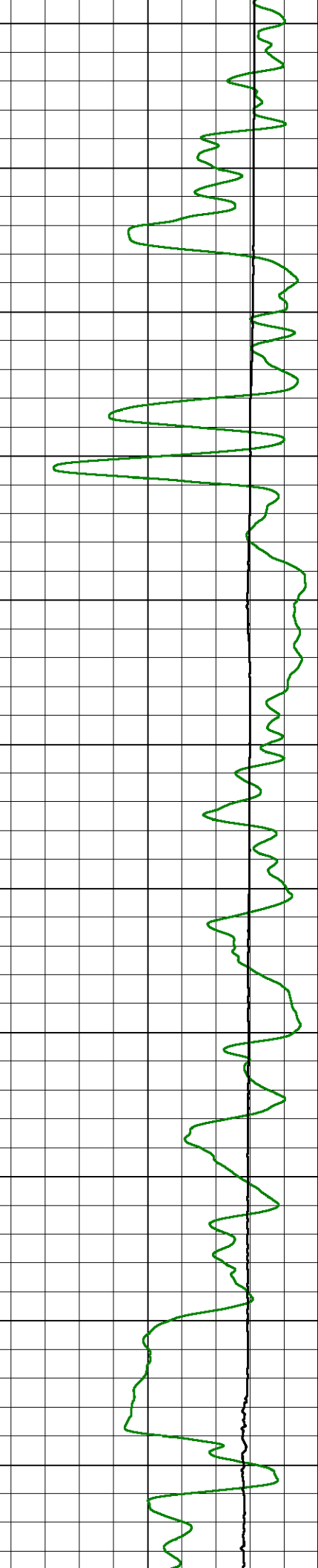
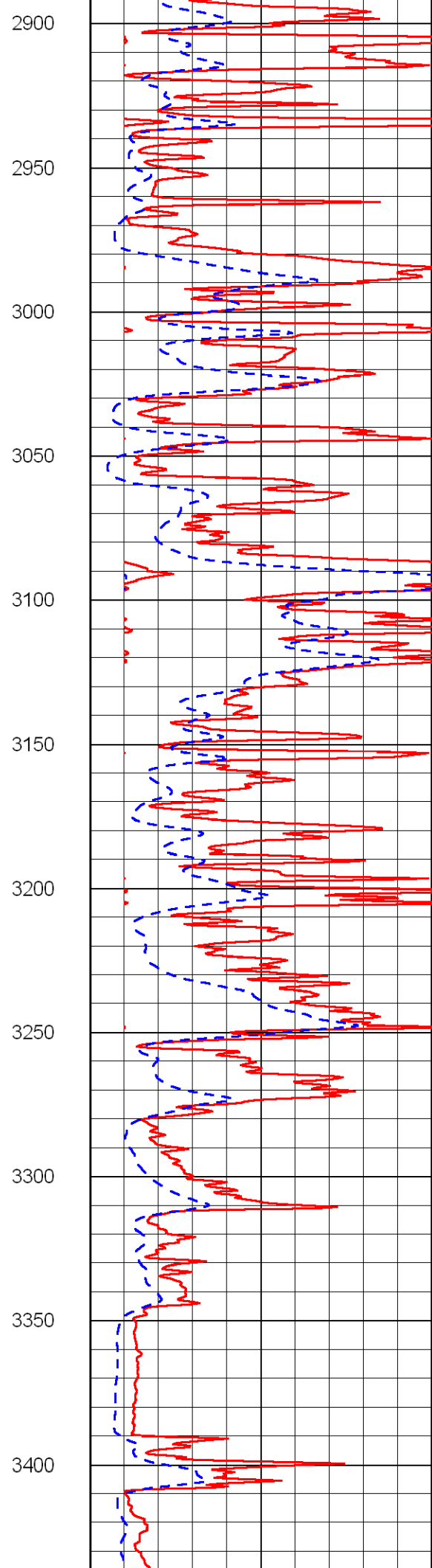
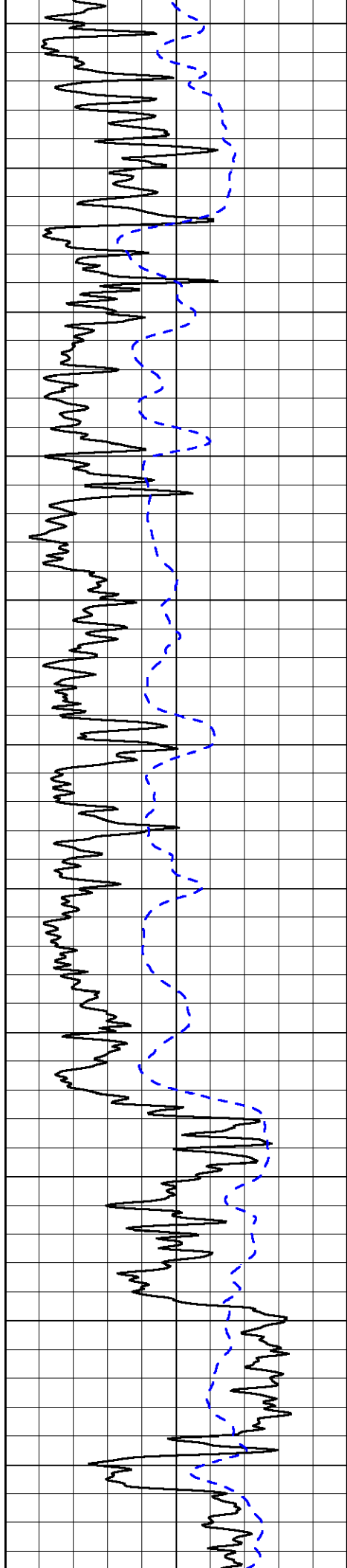


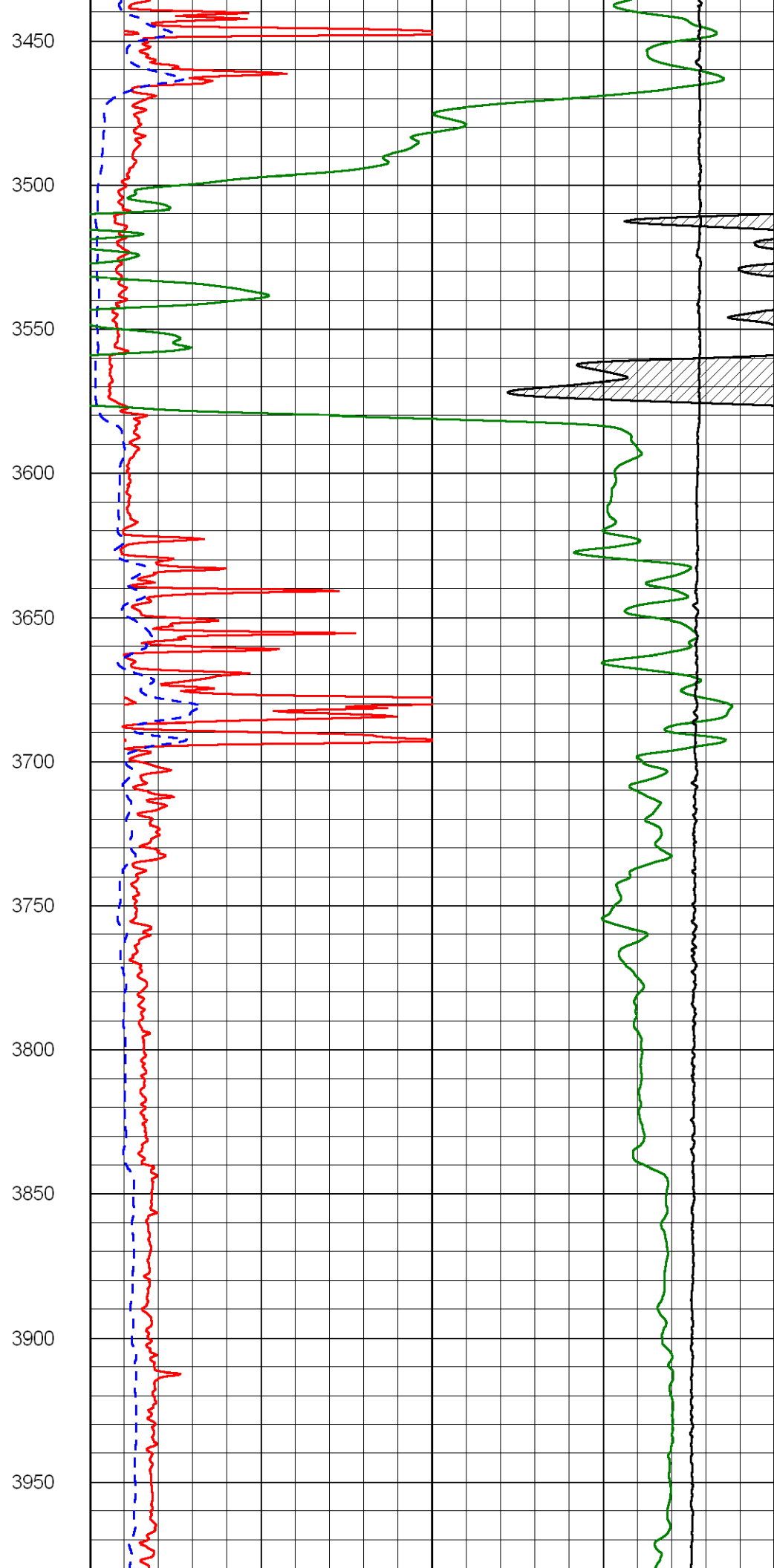
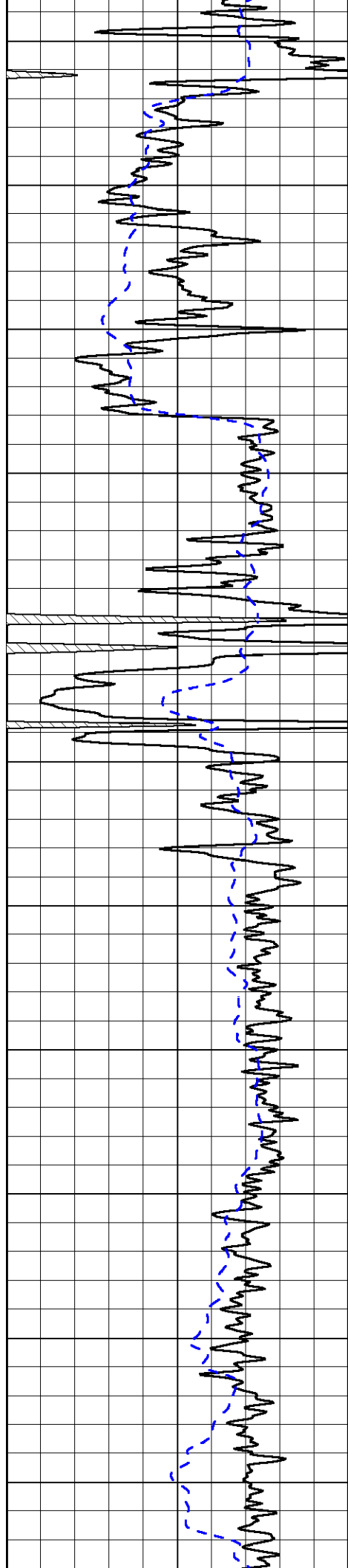
1300
1350
1400
1450
1500
1550
1600
1650
1700
1750
1800

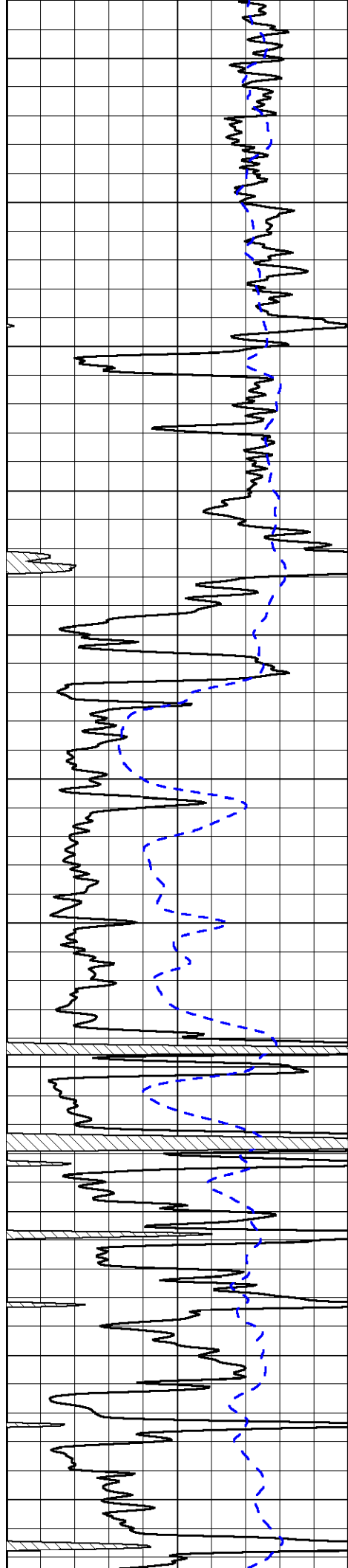












4000

4050

4100

4150

4200

4250

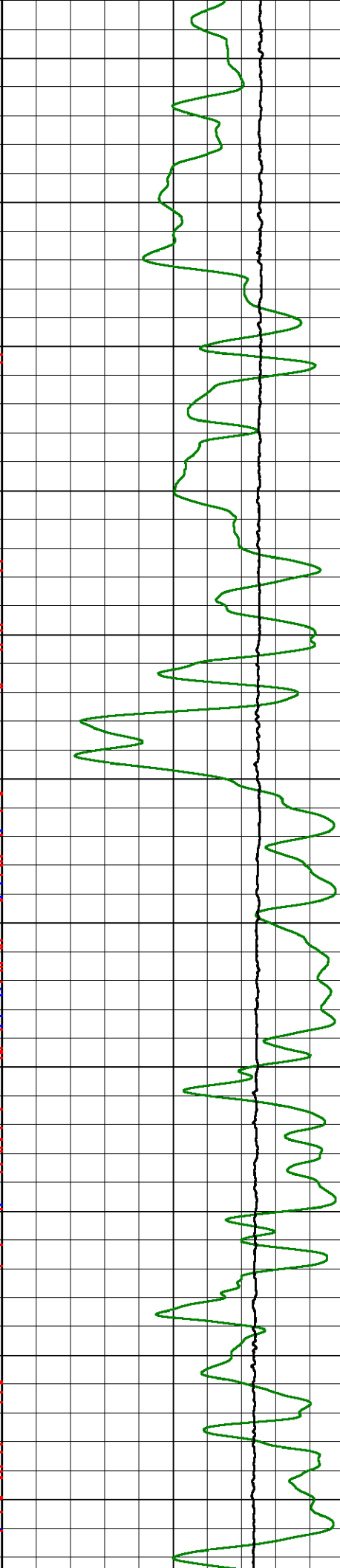
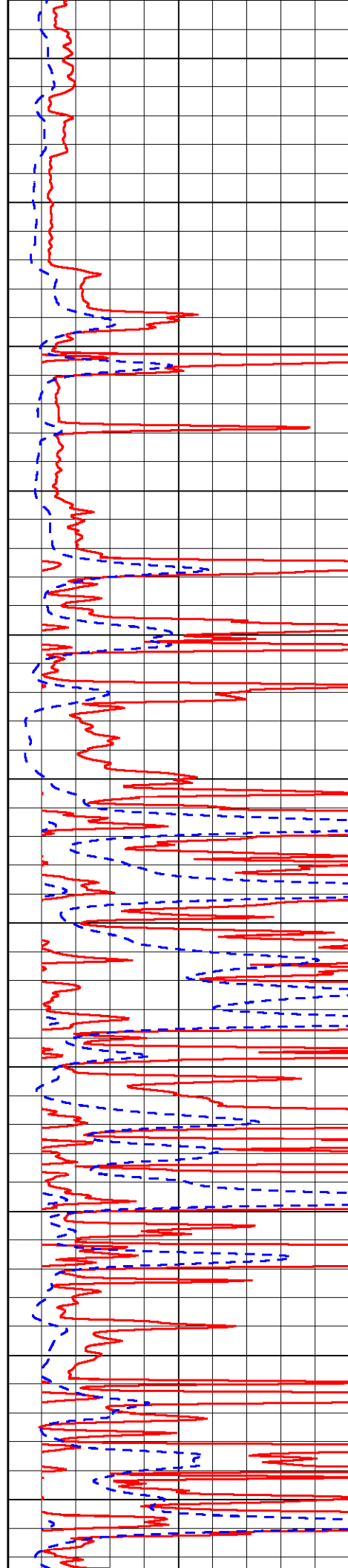
4300

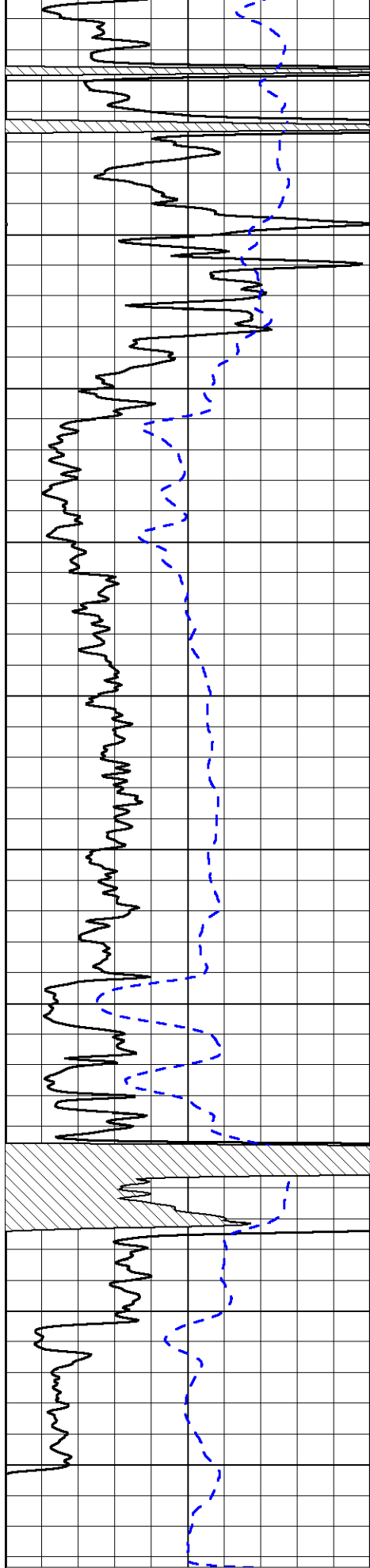
4350

4400

4450

4500





4550

4600

4650

4700

4750

4800

4850

4900

4950

5000

0

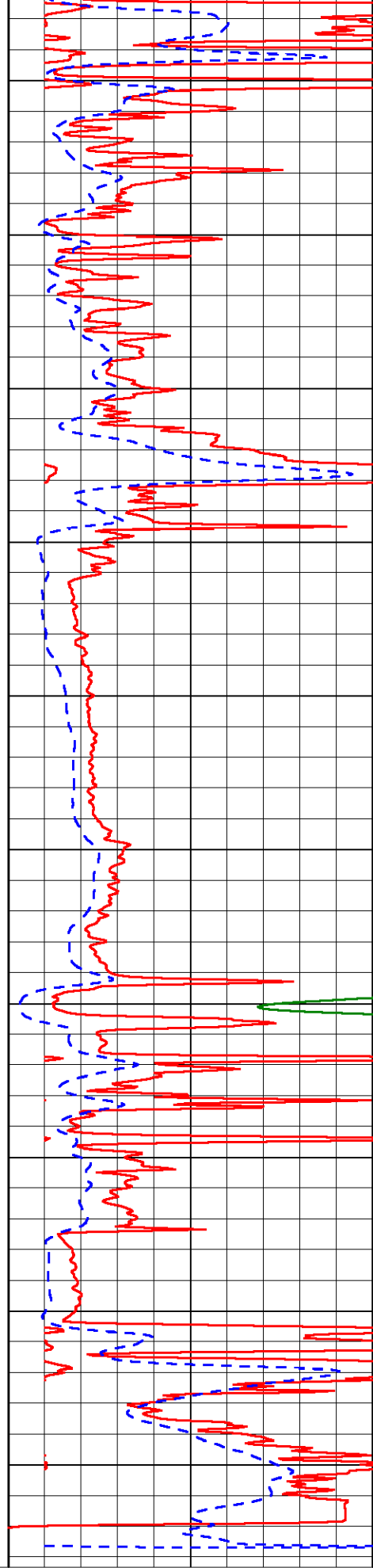
Gamma Ray

150

-200

SP

0



0

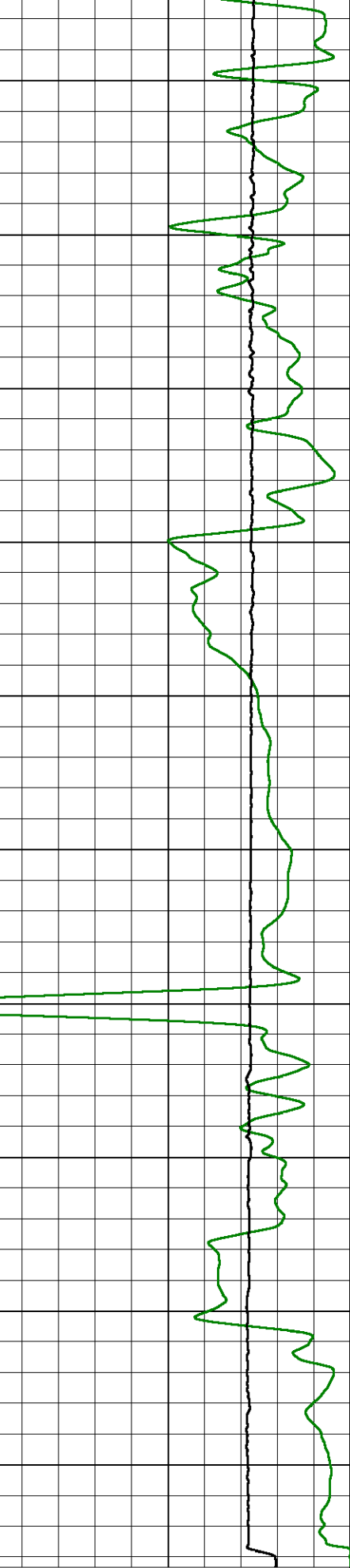
Shallow Resistivity

50

0

Deep Resistivity

50



1000

Conductivity

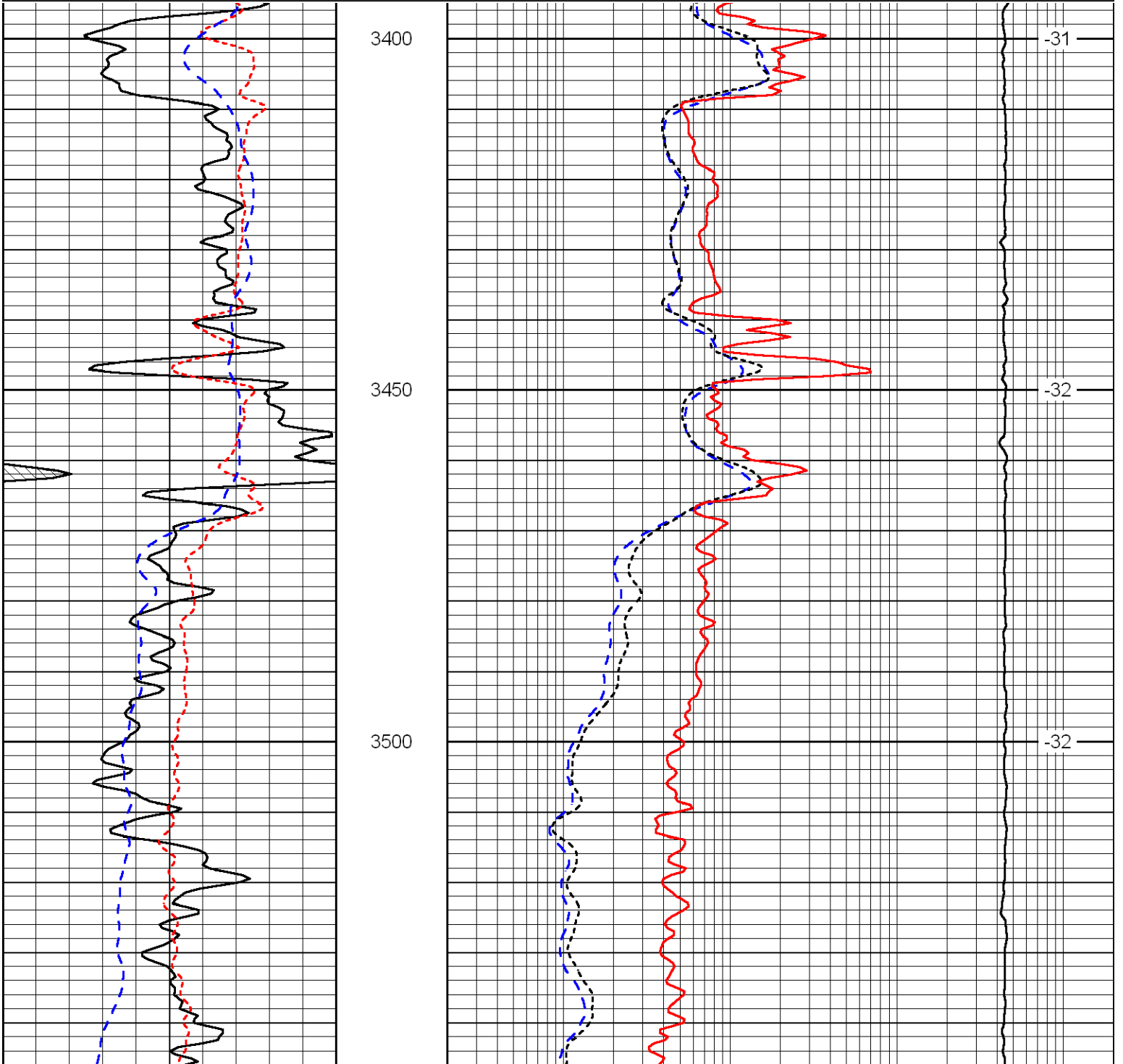
0

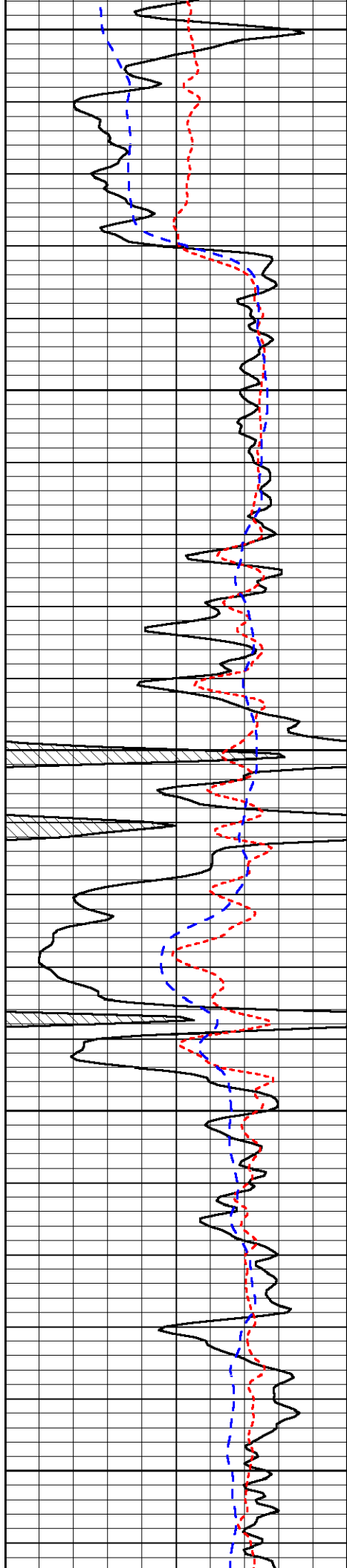
15000	Line Tension		0
50	Shallow Resistivity	500	
50	Deep Resistivity	500	

Database File: n10_110512hd.db
 Dataset Pathname: dil/n10stack
 Presentation Format: dil
 Dataset Creation: Mon Nov 05 22:11:13 2012
 Charted by: Depth in Feet scaled 1:240

0	Gamma Ray	150	0.2	Deep Resistivity	2000
-160	RXO/RT	40	0.2	Medium Resistivity	2000
-200	SP	0	0.2	Shallow Resistivity	2000
			10000	Line Tension	0

LSPD





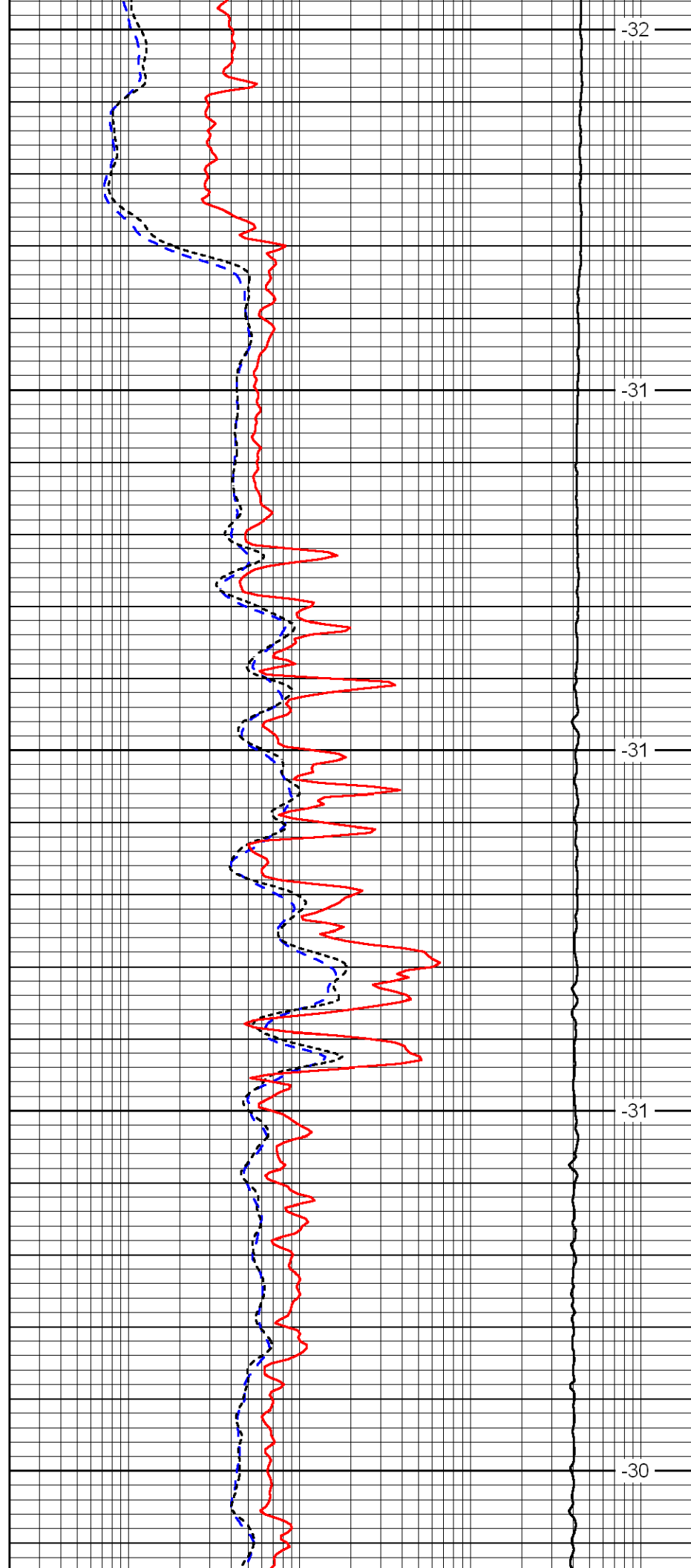
3550

3600

3650

3700

3750



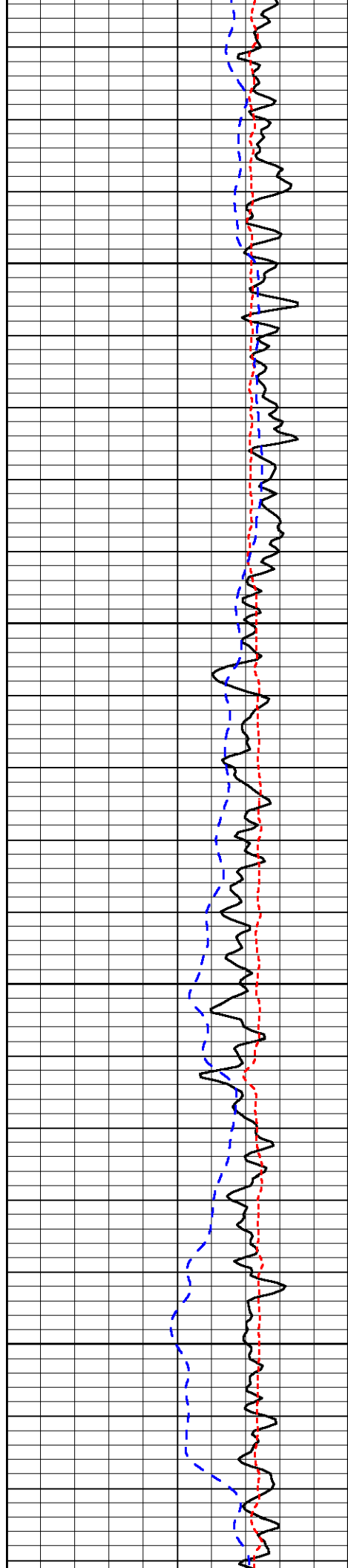
-32

-31

-31

-31

-30

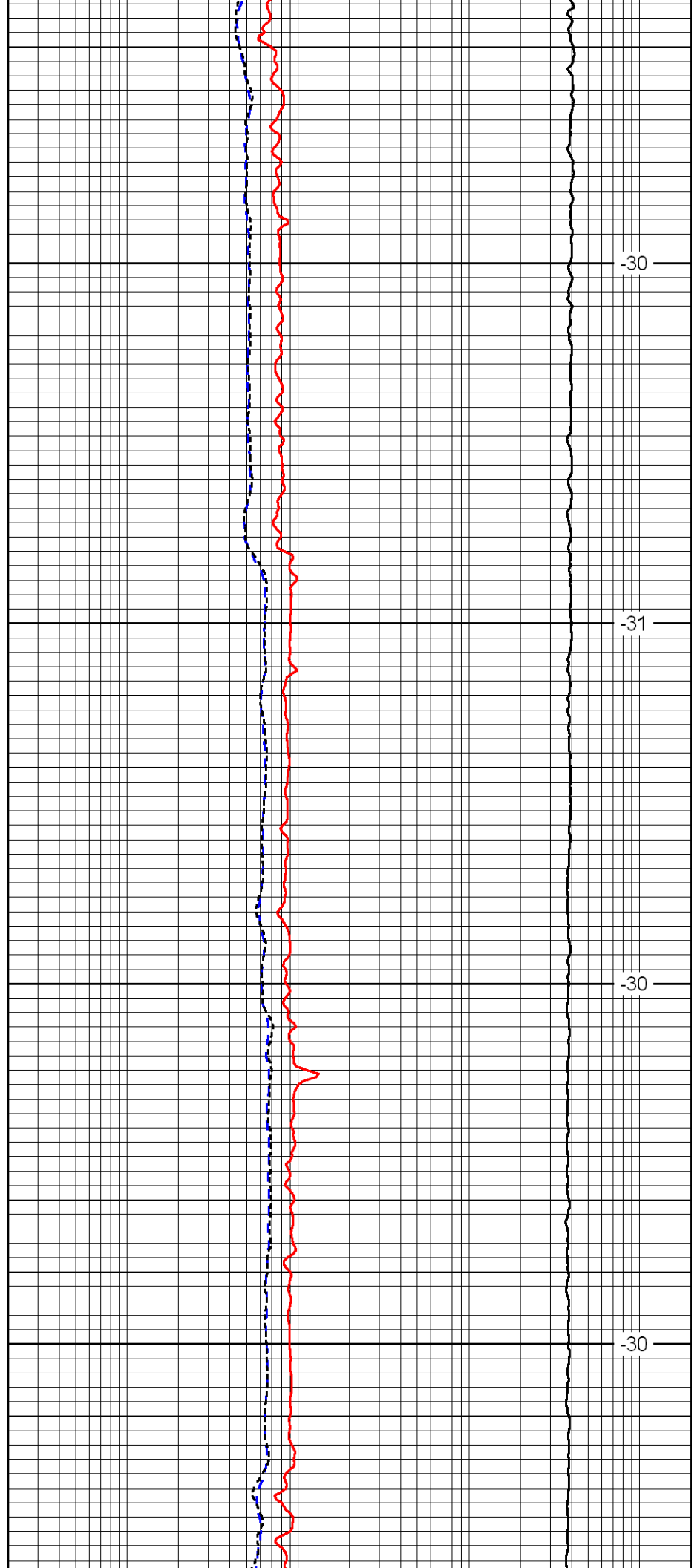


3800

3850

3900

3950

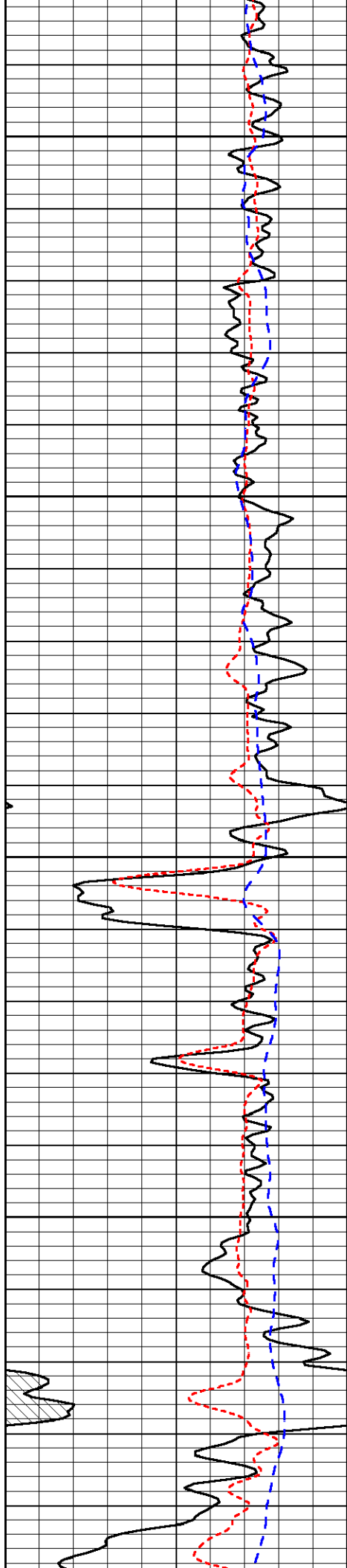


-30

-31

-30

-30

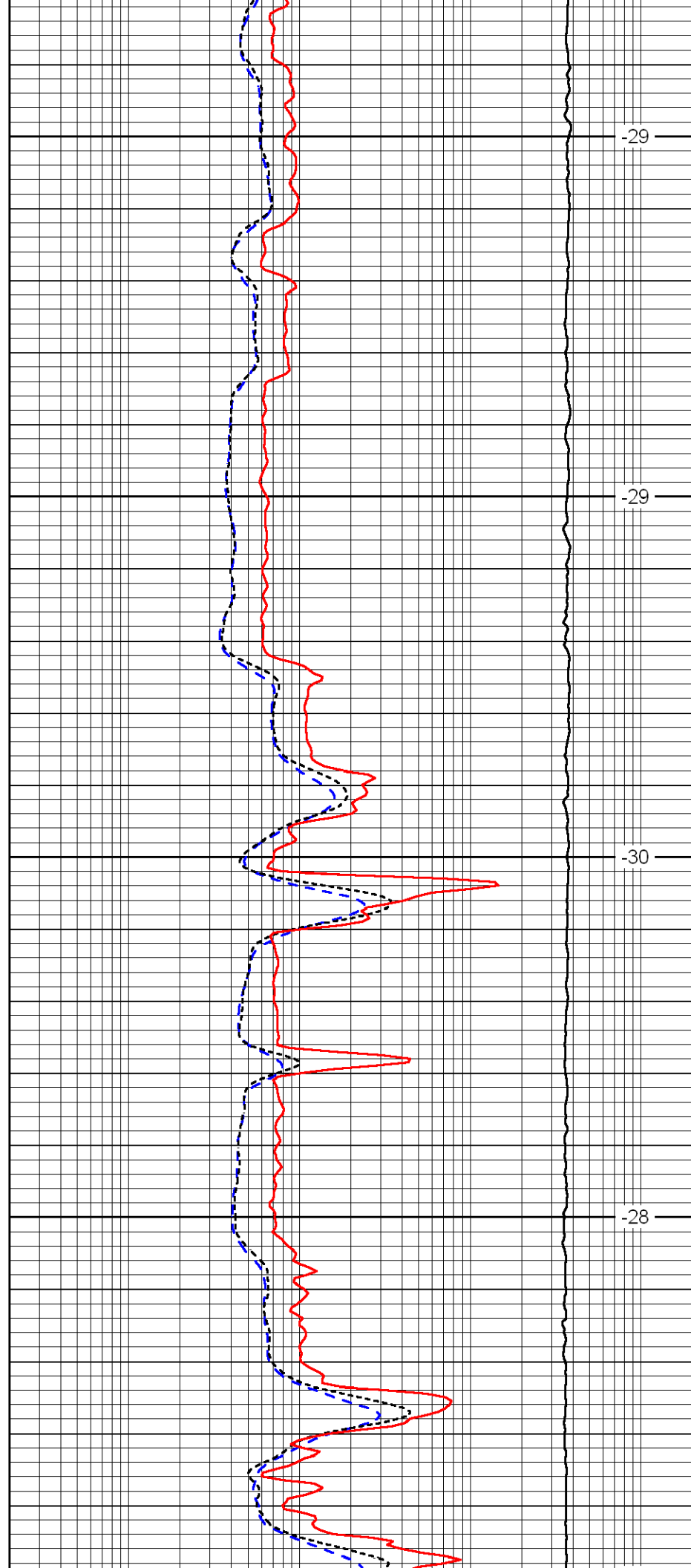


4000

4050

4100

4150

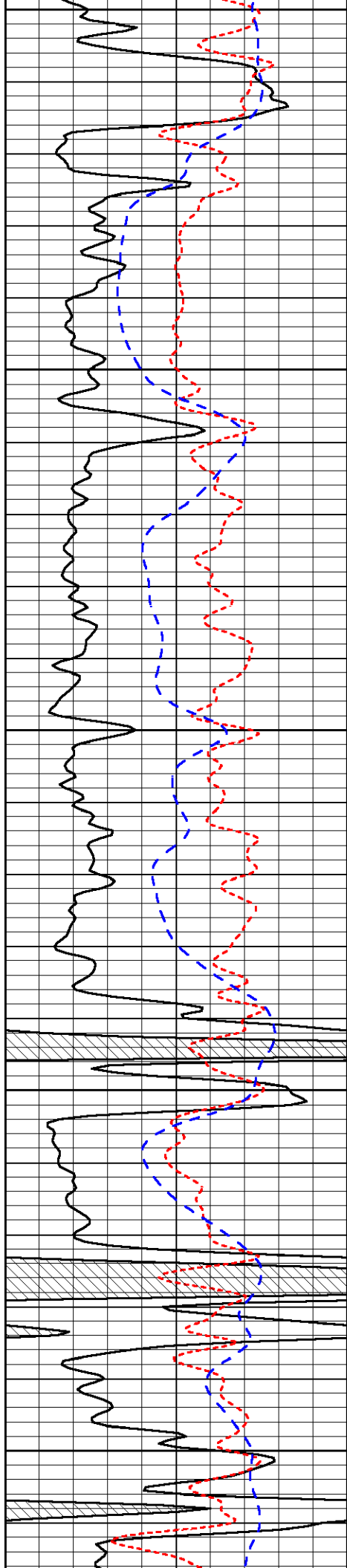


-29

-29

-30

-28



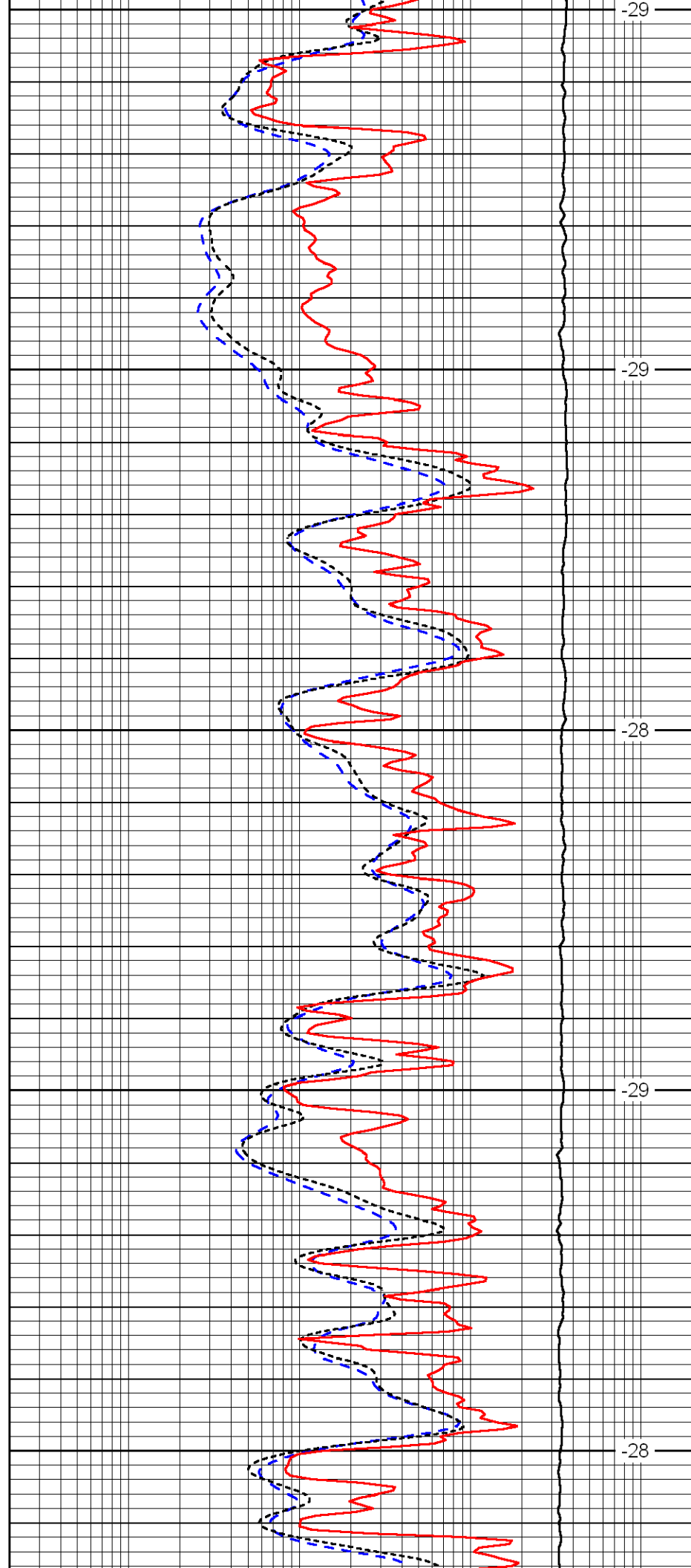
4200

4250

4300

4350

4400



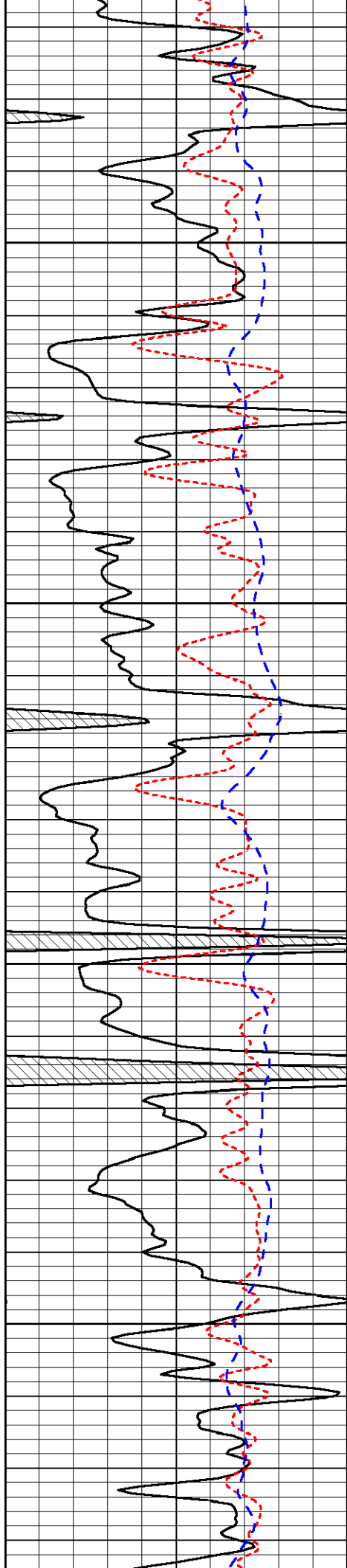
-29

-29

-28

-29

-28

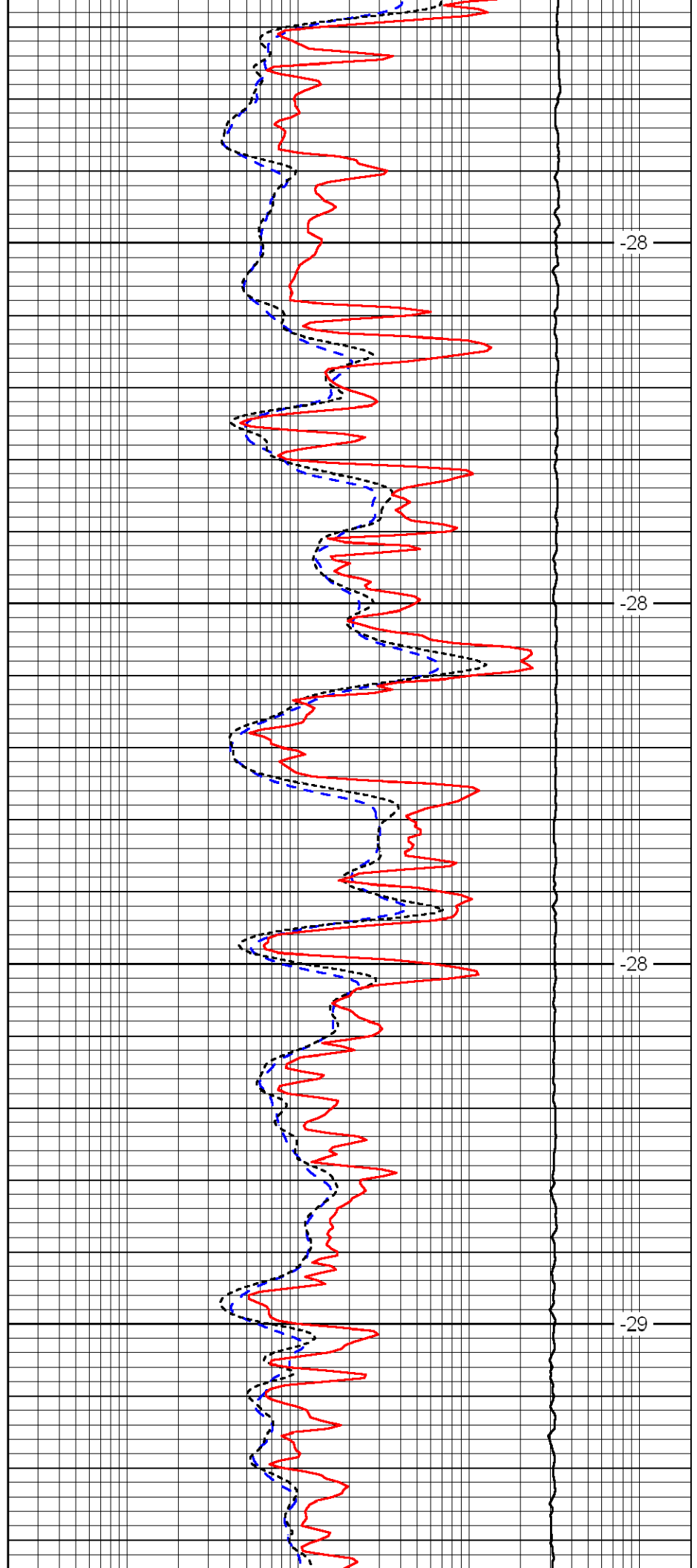


4450

4500

4550

4600

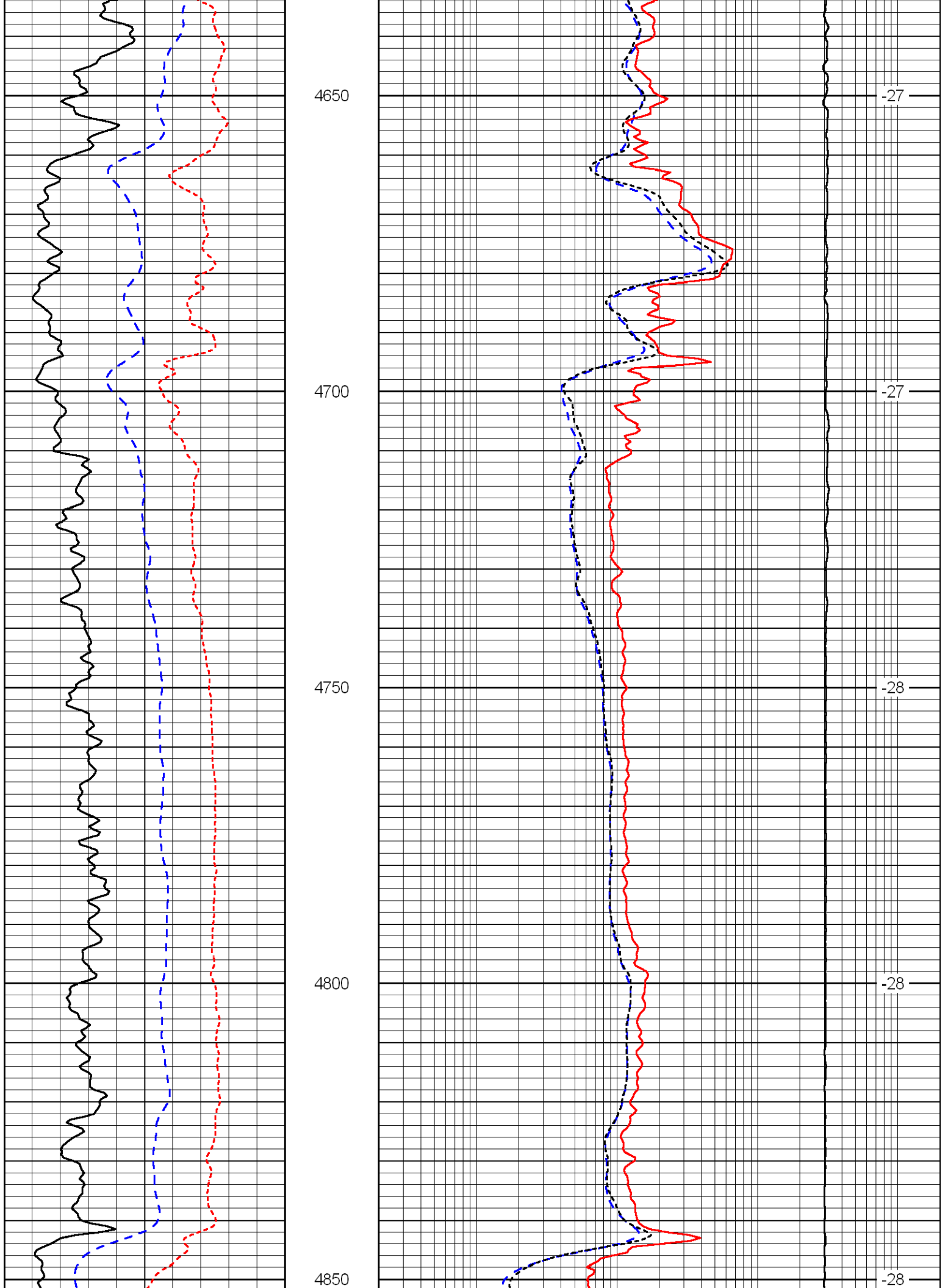


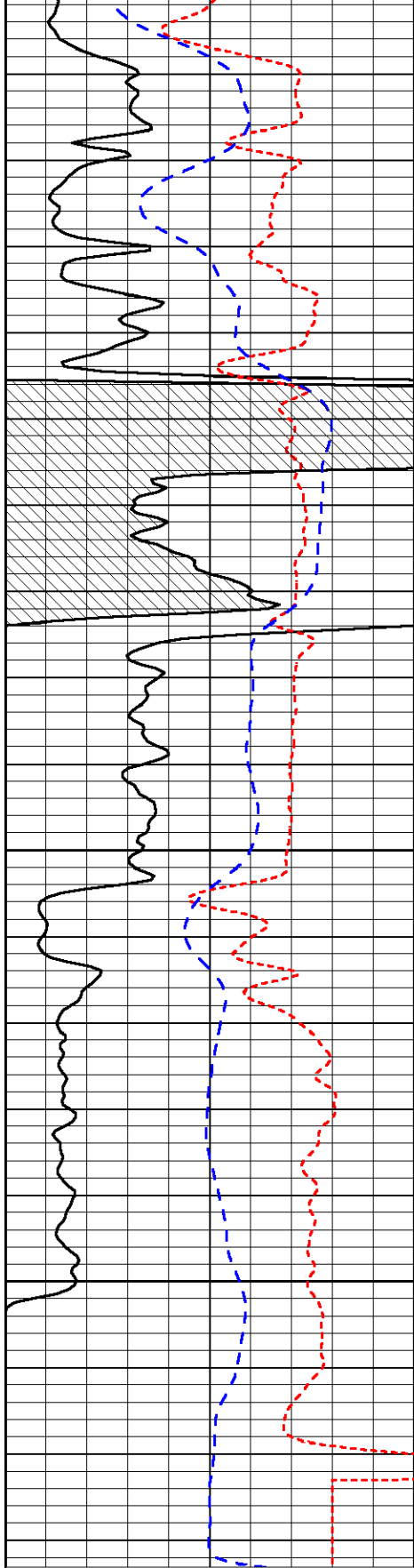
-28

-28

-28

-29



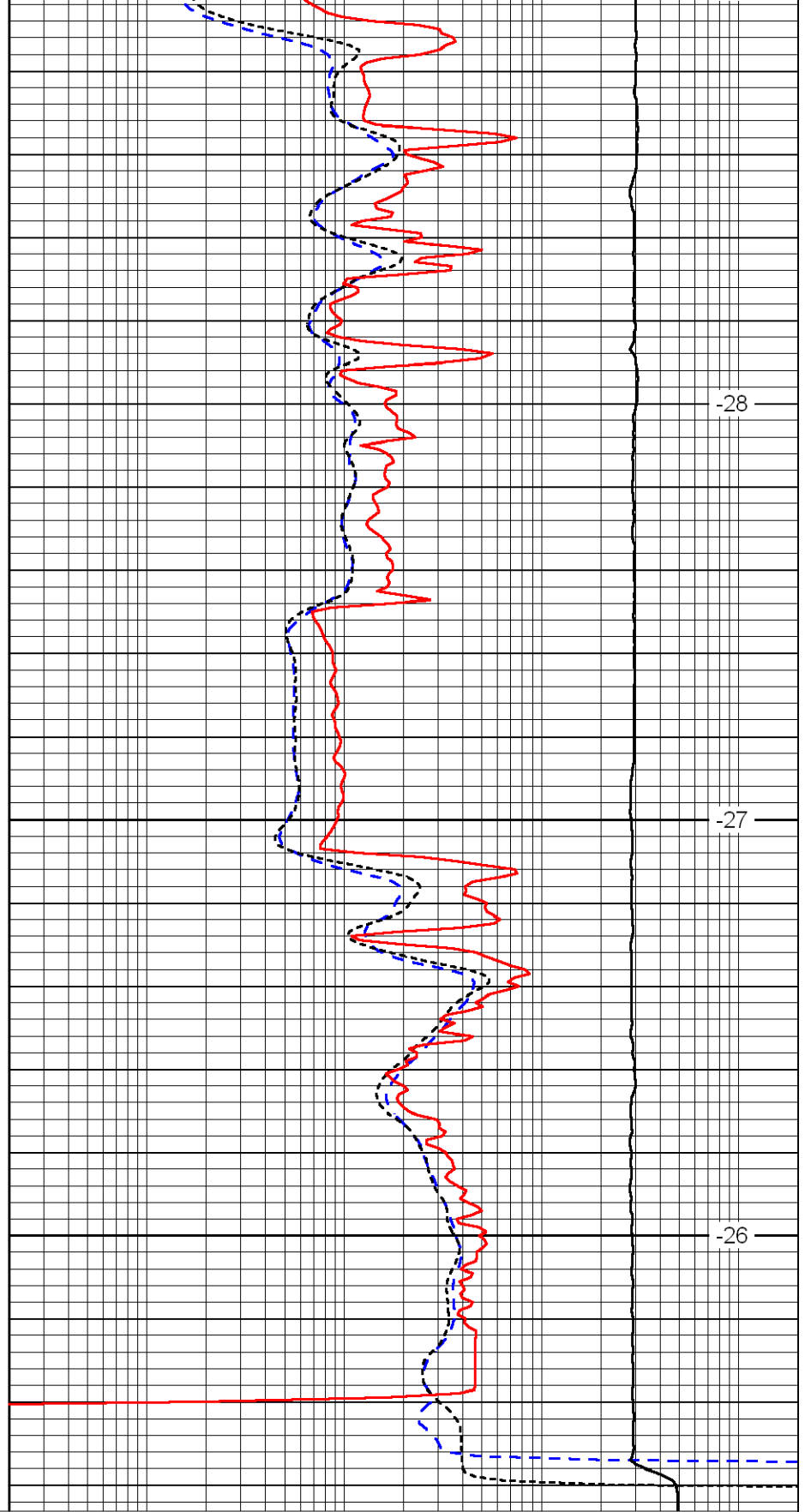


4900

4950

5000

0	Gamma Ray	150
-160	RXO/RT	40
-200	SP	0



-28

-27

-26

0.2	Deep Resistivity	2000
0.2	Medium Resistivity	2000
0.2	Shallow Resistivity	2000
10000	Line Tension	0

LSPD