



**MIDWEST SURVEYS**  
 LOGGING - PERFORATING - CONSULTING SERVICES  
 P.O. Box 68, Osawatomie, KS 66064  
 913.755.2128

**GAMMA RAY / NEUTRON / CCL**

File No. \_\_\_\_\_

Company **RJ Enterprises**

Well **Wilson Melcher No. 8-1**

Field **Bush City Shoestring**

County **Anderson**

State **Kansas**

Location **831' FSL & 4134' FEL  
SE-NE-SW-SW**

Other Services

Perforate

Sec. 8 Twp. 21S Rge. 20E

Perforant Datum Log Measured From Drilling Measured From

GL GL GL

Elevation

KB NA D.F. NA G.L. NA

Date 12-21-2012

Run Number One

Depth Driller 870.0

Depth Logger 883.4

Bottom Logged Interval 882.4

Top Log Interval 20.0

Fluid Level

Fluid Level

Type Fluid Water

Density / Viscosity NA NA

Salinity - PPM Cl NA NA

Max Recorded Temp NA NA

Estimated Cement Top 0.0

Equipment No. Location 104 Osawatomie

Recorded By Gary Windisch

Witnessed By Jason Kent

BORE-HOLE RECORD

NO. BIT FROM TO SIZE WGT. FROM TO

One 9.875" 20.0 7.00" 20.0

Two 5.625" 20.0 2.875" 0.0

TO 20.0

683.9

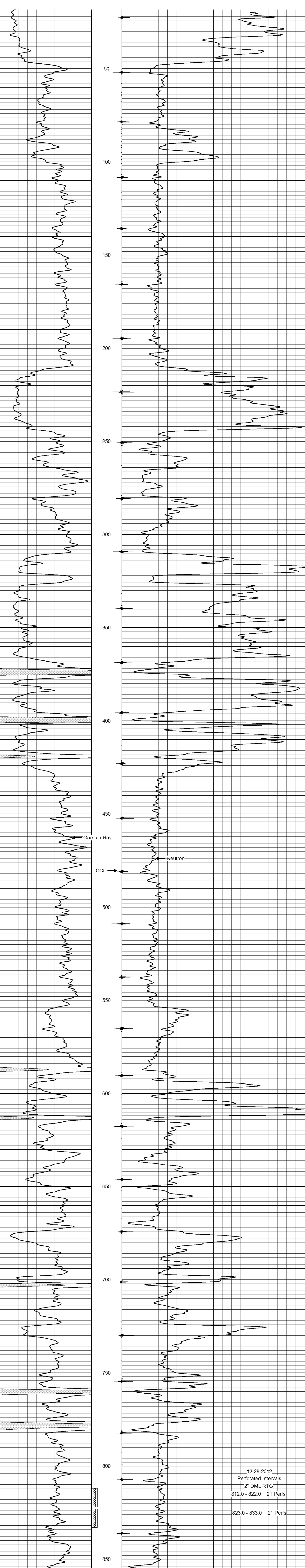
<<< Fold Here >>>

All interpretations are opinions based on inferences from electrical or other measurements and we cannot and do not guarantee the accuracy or correctness of any interpretation, and we shall not, except in the case of gross or willful negligence on our part, be liable or responsible for any loss, costs, damages, or expenses incurred or sustained by anyone resulting from any interpretation made by any of our officers, agents or employees. These interpretations are also subject to our general terms and conditions set out in our current Price Schedule.

Comments

Drilling Contractor :  
RJ Enterprises

Database File: melcher8iw.db  
 Dataset Pathname: pass1  
 Presentation Format: gr-n-ccl  
 Dataset Creation: Fri Dec 21 13:41:09 2012 by Log SCH 111116  
 Charted by: Depth in Feet scaled 1:240



12-28-2012  
 Perforated Intervals  
 2" DML RTG  
 812.0 - 822.0 21 Perfs  
 823.0 - 833.0 21 Perfs