



MIDWEST SURVEYS
 LOGGING - PERFORATING - CONSULTING SERVICES
 P.O. Box 68, Osawatomie, KS 66064
 913 / 755 - 2128

GAMMA RAY / NEUTRON / CCL

File No. _____

Company **RJ Enterprises**

Well **Wilson Melcher No. 9-1**

Field **Bush City Shoestring**

County **Anderson** State **Kansas**

Location **460' FSL & 4156' FEL
NE-SE-SW-SW**

Other Services Perforate

Sec. 8 Twp. 21S Rge. 20E

Perforated From GL Elevation NA

Log Measured From GL

Drilling Measured From GL

Date **12-21-2012**

Run Number **One**

Depth Driller **886.0**

Depth Logger **888.8**

Bottom Logged Interval **857.8**

Top Log Interval **20.0**

Fluid Level **Full**

Type Fluid **Water**

Density / Viscosity **NA**

Salinity - PPM Cl **NA**

Max Recorded Temp **NA**

Estimated Cement Top **NA**

Equipment No. **0.0**

Location **104 Osawatomie**

Recorded By **Gary Wlindisch**

Witnessed By **Jason Kent**

BORE-HOLE RECORD

NO. BIT FROM TO SIZE WGT. FROM TO

One 9.875" 0.0 20.0 7.00" 0.0 20.0

Two 5.625" 20.0 888.0 2.875" 0.0 881.3

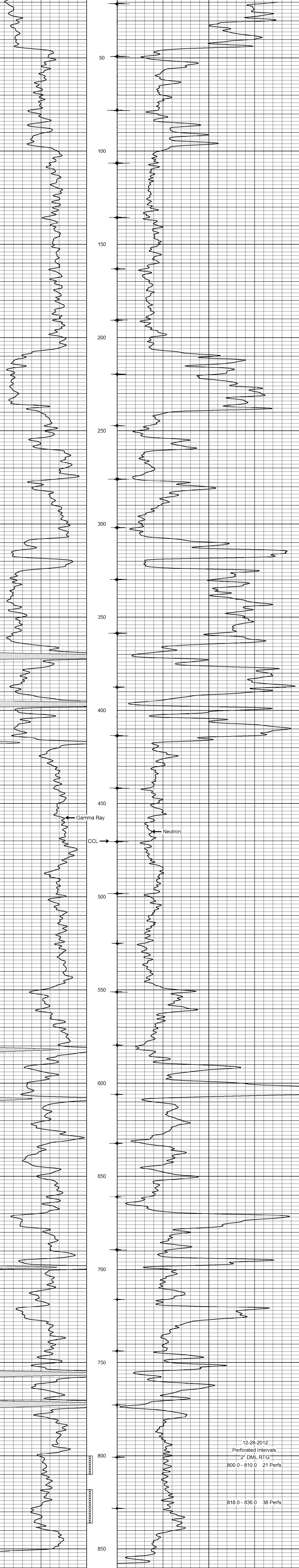
<<< Fold Here >>>

All interpretations are opinions based on inferences from electrical or other measurements and we cannot and do not guarantee the accuracy or correctness of any interpretation, and we shall not, except in the case of gross or willful negligence on our part, be liable or responsible for any loss, costs, damages, or expenses incurred or sustained by anyone resulting from any interpretation made by any of our officers, agents or employees. These interpretations are also subject to our general terms and conditions set out in our current Price Schedule.

Comments

Drilling Contractor :
RJ Enterprises

Database File: melcher9iw.db
 Dataset Pathname: pass1
 Presentation Format: gr-n-ccl
 Dataset Creation: Fri Dec 21 14:15:28 2012 by Log SCH 111116
 Charted by: Depth in Feet scaled 1:240



12-28-2012
 Perforated Intervals
 2" DML RTG
 800.0 - 810.0 21 Perfs
 818.0 - 836.0 38 Perfs